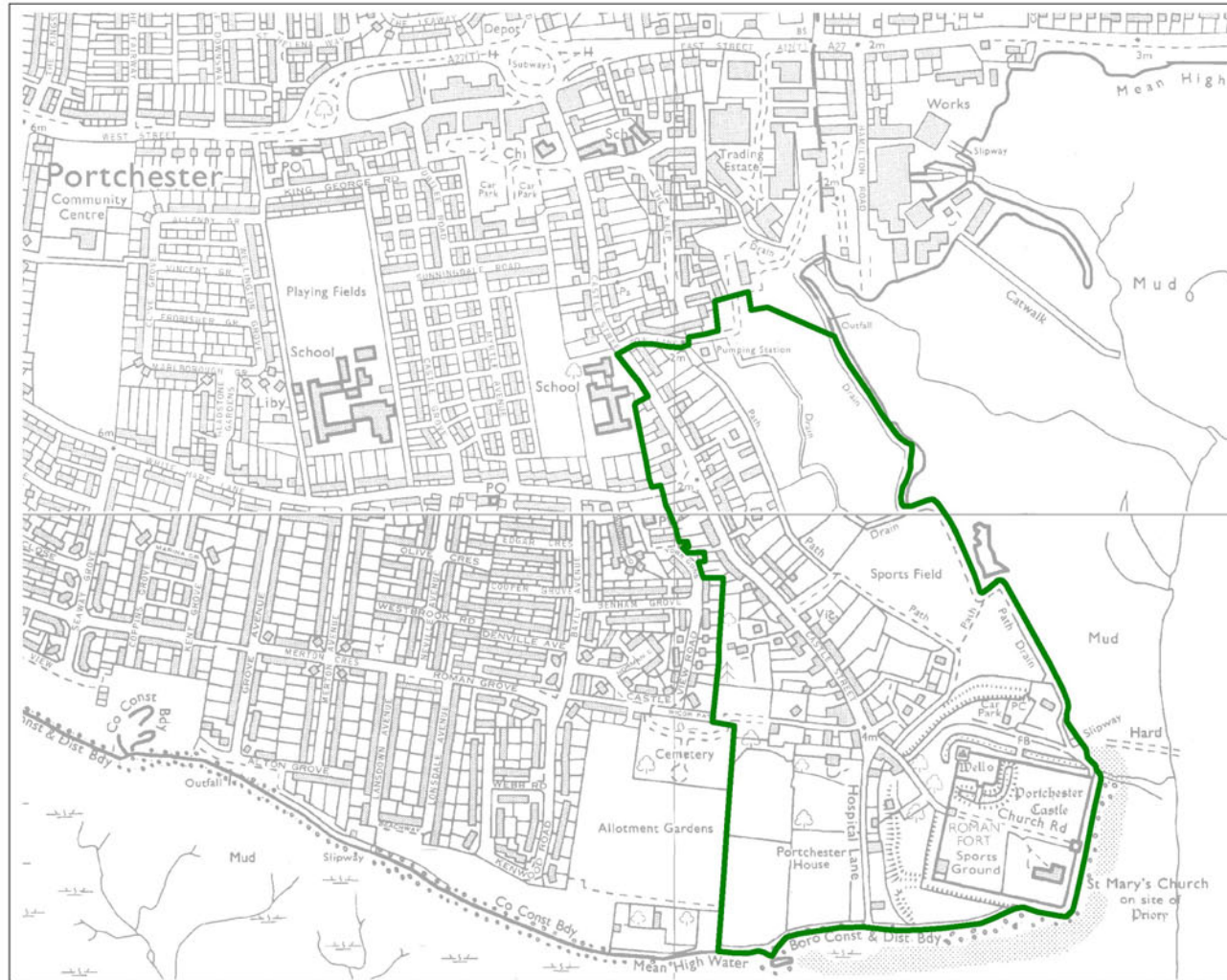
 Conservation Area




0 100 200 300 Meters

1:8,000

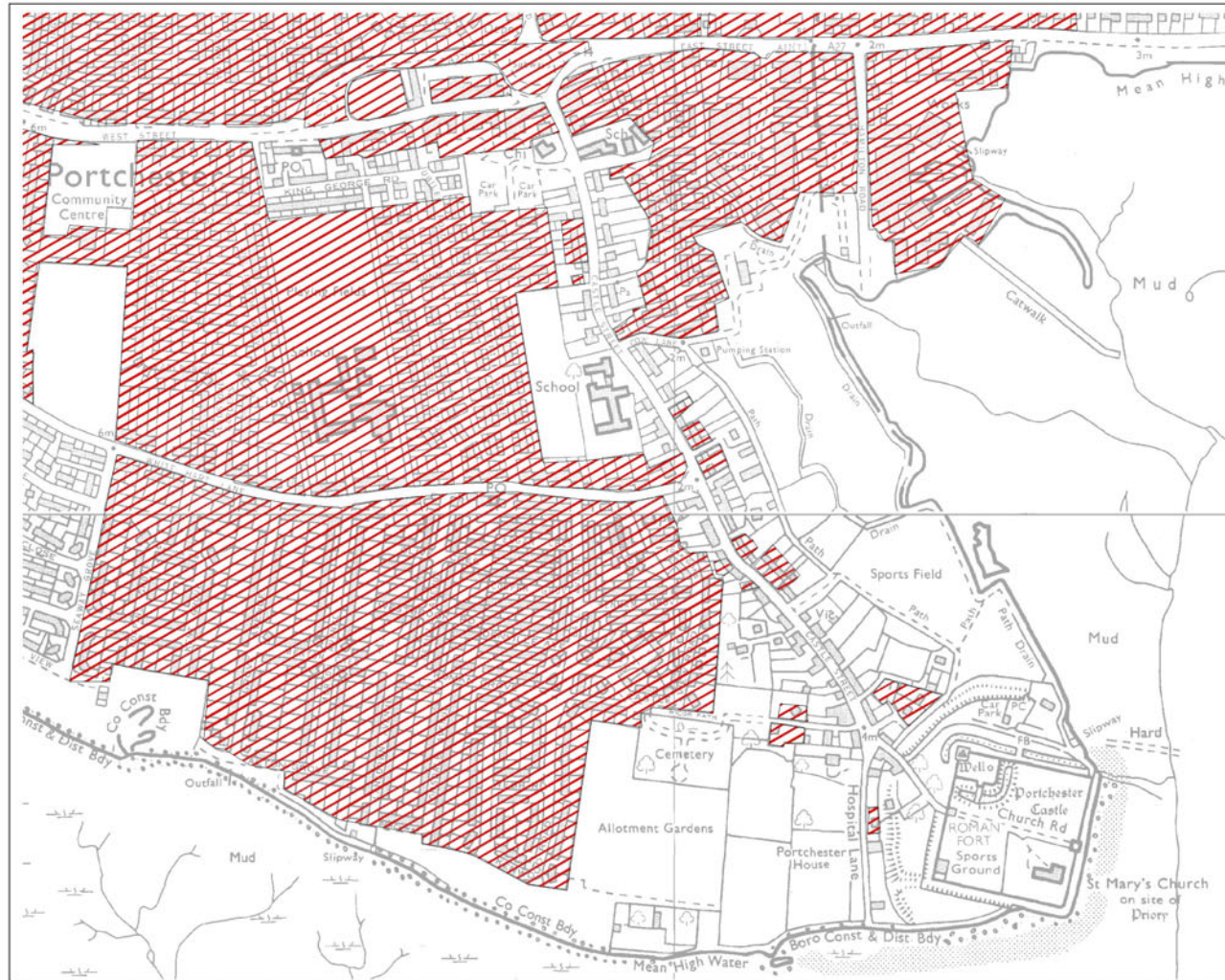
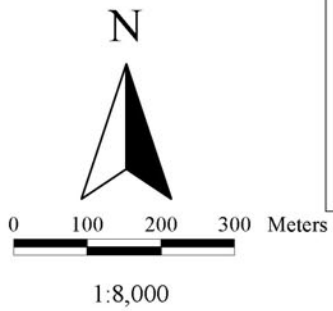


MAP A PORTCHESTER CONSERVATION AREA

(c) Crown Copyright 1998  
HCC 076651  
Reproduced from the Ordnance Survey  
map with the permission of the controller  
of Her Majesty's Stationery Office

 Modern development

Note: Areas shown may have compromised or destroyed archaeological deposits



MAP B MODERN DEVELOPMENT

(c) Crown Copyright 1998  
HCC 076651  
Reproduced from the Ordnance Survey  
map with the permission of the controller  
of Her Majesty's Stationery Office

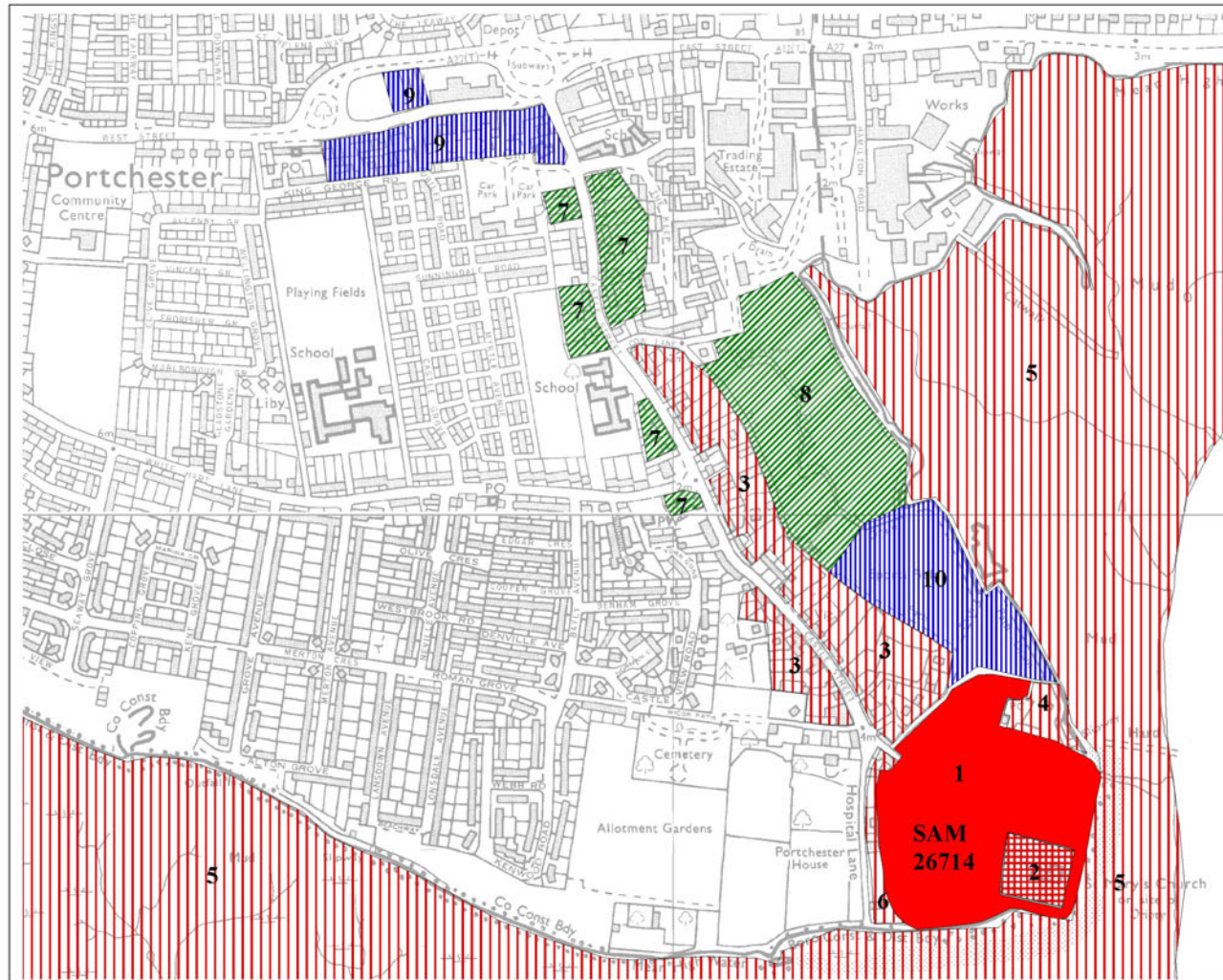


- Nationally Important Remains (Scheduled)
- Nationally Important Remains (unscheduled)
- Areas of High Archaeological Importance
- Archaeologically Important Areas
- Areas of Limited Archaeological Importance



0 100 200 300 Meters

1:8,000



MAP C AREAS OF ARCHAEOLOGICAL IMPORTANCE

(c) Crown Copyright 1998  
HCC 076651  
Reproduced from the Ordnance Survey  
map with the permission of the controller  
of Her Majesty's Stationery Office