

# THE CHURCH PLATE OF SURREY.

BY REV. T. S. COOPER, M.A.,

ONE OF THE HONORARY SECRETARIES.

(Continued from Vol. X, p. 368.)

---

## ARCHDEACONRY OF SURREY.

---

### *Rural Deanery of Dorking.*

---

ABINGER. S. JAMES.

*Silver Cup.*—Weight, 8 oz. 13 dwt. Height,  $7\frac{3}{8}$  in. Diam. of bowl,  $3\frac{7}{10}$  in.; of foot,  $3\frac{1}{2}$  in. Depth of bowl,  $3\frac{7}{8}$  in.

London hall-marks of 1736:—1. Leopard's head crowned in a plain, pointed shield. 2. I S, a pellet between, in a dotted oval stamp, the mark of Joseph Smith, of Clerkenwell.<sup>1</sup> 3. Roman small a. 4. Lion passant in a plain oblong.

*Silver Cover.*—Weight, 3 oz. 17 dwt. Height,  $3\frac{1}{5}$  in.

The cup is well proportioned, having a straight-sided bowl rounded off below, and slightly moulded at the lip. The knop, dividing the stem, is plainly moulded, as is also the edge of the foot. The usual star ornament is engraved on the bowl. The cover is high with an acorn at the top.

---

<sup>1</sup> *Old English Plate*, p. 341. The address of the silversmith here and elsewhere is, as a rule, taken from Chaffers' *Gilda Aurifabrorum*.

*Silver Paten.*—Weight, 10 oz. Diam.,  $8\frac{1}{3}$  in.  
Hall-marks as on the cup.

The star ornament is in the centre, and the edge plainly moulded.

*Silver Plate.*—Weight, 11 oz. 17 dwt. Diam., 9 in.  
Hall-marks as above.

This was formerly a plate for offerings, but is now used as a paten. The centre is raised, and the edge of the rim moulded.

*Silver Flagon.*—Weight, 35 oz.  $10\frac{3}{4}$  dwt. Height,  $11\frac{1}{4}$  in. Diam. of mouth,  $3\frac{3}{10}$  in.; of base,  $6\frac{3}{10}$  in.  
Hall-marks as above.

This is a tankard-shaped vessel with fine spreading base. The lid resembles the cover of the cup, and the star ornament is repeated on the drum.

Each of the above pieces is inscribed underneath: "The Gift of the Countess of Donegall & the Earl Her Son to the Church of Abinger, 1736." This was Catherine, widow of the third Earl of Donegal. She owned Abinger Hall, where she resided during her son's minority.

*Brass Alms Bason.*—

On the rim is, "He that giveth to the poor lendeth to the Lord." Under the bason there is this inscription: "Presented to Abinger Church by Miss M. A. Roe, 1880."

#### CAPEL. S. JOHN BAPTIST.

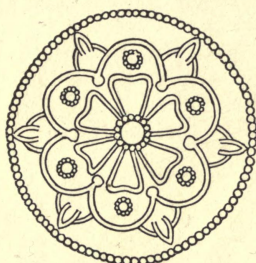
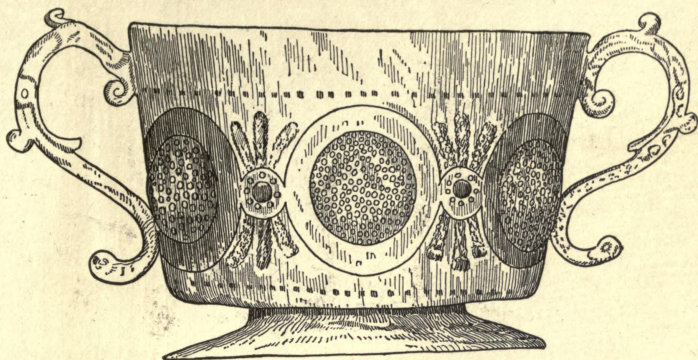
*Silver two-handled Cup.*—Weight,  $4\frac{1}{2}$  oz. Height,  $2\frac{1}{2}$  in. Diam. of bowl,  $3\frac{3}{8}$  in.; of foot,  $2\frac{7}{8}$  in. Depth of bowl, 2 in.

No hall-marks; date c. 1655.

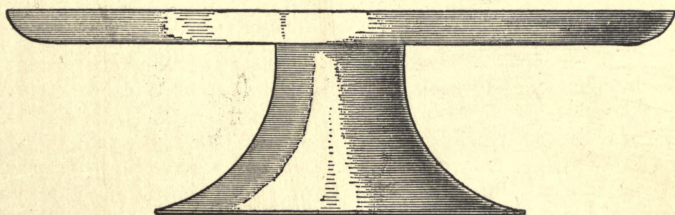
This is properly speaking a porringer, and is very similar in design and size to one in use as a communion cup at Winterborne Whitechurch, in Dorsetshire, which has the hall-marks of 1653, and the maker's mark, a bird within a plain shield.<sup>1</sup> Under the foot there is a Tudor rose, which is wanting on the Dorsetshire example. It was evidently not originally intended for Church purposes, and may very well have been dedicated to its present use years after it was made. The work on the bowl is repoussé, the circular ornaments being slightly convex, with indications of their having been gilt. Some soldering has been done where the bowl joins the short neck.

---

<sup>1</sup> *Church Plate of Dorset*, p. 145.



CAPEL. c. 1633.  
About Two-thirds Full Size.



BRAMLEY, c. 1592,

Half Size.

(See page 58.)

face 40.



*Silver Cup*.—Weight, 11 oz. 17 dwt. Height,  $7\frac{7}{8}$  in.

London hall-marks of 1879. Maker, G. Lambert, Coventry Street.

The bowl, gilt-lined, is broad and conical, with an indented ornament round it. The stem and foot are hexagonal, and on the knop are four bosses. It is inscribed, "In memoriam B. S. C. quæ obdormivit in Christo xxi<sup>o</sup> die Novembris, A.D. MDCCCLXXIX. Fiat voluntas Tua."

*Silver Paten*.—Weight, 10 oz. 7 dwt. Diam., 8 in. Height, 1 in.

London hall-marks of 1781:—1. Leopard's head crowned in a round shield. 2. I.S. in a shaped stamp; the mark of John Scofield, Bell Yard.<sup>1</sup> 3. Roman small f. 4. Lion passant.

*Silver Paten*.—Weight, 13 oz. Diam., 9 in. Height,  $1\frac{1}{4}$  in.

London hall-marks of 1786:—1 and 4, as above. 2. E I in a square stamp, corners clipped; the mark of Edward Jay, Strand.<sup>2</sup> 3. Roman small l. 5. Head of George III.

Both of these are salvers with moulded rim and beaded edge, and stand on three feet also moulded and beaded.

*Plated barrel-shaped Flagon*.

*Brass Alms Bason*.—

"Blessed be the man that provideth for the sick and needy" is engraved on the rim. It was given in 1866.

*Pewter Plate*.—Diam., 12 in.

Stamps very indistinct:—1. In the centre of a stamp flanked by fluted columns, some device between two bears or badgers, "RICHARD" above, "KING" below. 2. A crowned rose, with some word beginning with G R A below. 3. S over E E.

#### COLD HARBOUR. CHRIST CHURCH.

*Silver Cup*.—Weight,  $7\frac{9}{10}$  oz. Height,  $7\frac{3}{4}$  in. Diam. of bowl,  $3\frac{1}{2}$  in.; of foot,  $3\frac{1}{4}$  in. Depth of bowl, 3 in.

<sup>1</sup> *Old English Plate*, p. 350.

<sup>2</sup> *Ibid.*, p. 351.



*Silver Paten*.—Weight, 8 oz. 17 dwt. Diam.,  $6\frac{1}{2}$  in. Height, 2 in.

*Silver Flagon*.—Weight,  $19\frac{1}{10}$  oz. Height,  $9\frac{1}{2}$  in. London hall-marks of 1847 on this and the other pieces. Makers, C. T. & G. Fox.

*Plated Alms Bason*.—

The usual star ornament is engraved on each piece.

#### DORKING. S. MARTIN.

The Communion vessels in use here are modern, having been presented a few years ago by the Rt. Hon. George Cubitt, M.P., of Denbies. The churchwardens having refused to have the plate inspected, no particulars can be given.

#### DORKING. S. PAUL.

*Two silver Cups*, each weighing 10 oz., and measuring in height, 8 in.

One cup is inscribed, "The gift of Richard Attlee to S<sup>t</sup> Paul's Ch : Dorking—1858."

*Two silver Patens*, each weighing 10 oz., and measuring in diam.  $7\frac{1}{2}$  in., and in height  $2\frac{1}{2}$  in.

*Silver Flagon*.—Weight, 30 oz. 19 dwt. Height,  $12\frac{3}{4}$  in.

Each piece has the London hall-marks of 1840. Makers, E. J. and W. Barnard.

The sacred monogram with a cross Calvary above the centre letter, the whole in a rayed star, is engraved on each piece.

#### HOLMBURY. S. MARY THE VIRGIN.

*Silver-gilt Cup*.—Weight,  $16\frac{4}{5}$  oz. Height,  $7\frac{5}{8}$  in. Diam. of bowl,  $4\frac{1}{8}$  in. Depth of bowl,  $2\frac{3}{8}$  in.

London hall-marks of 1879. Maker, J. Barkenton.

On the shallow, round bowl is, "Calicem Salutaris accipiam et Nomen Domini invocabo." The slender stem is divided by a large knop having four circular bosses, on each of which is the sacred monogram in black enamel. Lower down on the stem there is a small parcel-gilt crucifix appliqué. The upper portion of the foot is mullet-shaped, and the base sex-foil. Underneath there is this inscription: "In memoriam J. M. A. S. MDCCCLXXIX. B. V. M. Holmbury-S. Mary."

*Silver-gilt Paten.*—Weight, 4 oz. 11 dwt. Diam.,  $5\frac{3}{4}$  in.

Hall-marked as above.

Round the rim is, "Agnus Dei Qui tollis peccata mundi miserere nobis."

*Silver Credence Paten.*—Weight, 7 oz. 19 dwt. Diam., 8 in.

Sheffield hall-marks of 1862.

On the rim: "To the glory of God. A thank-offering from Mary Thompson. Easter, 1888."

*Glass silver-gilt mounted Flagon.*—  
London hall-marks of 1879.

The lid, handle, sex-foil foot, and band round the body of this flask-shaped vessel are silver-gilt. In the band are set four large jewels, and a polished piece of Derbyshire spar is mounted on the lid. Under the foot is the same inscription as on the cup.

The silver-gilt pieces were presented by the founder of the church, the late G. E. Street, Esq., R.A., in memory of Jessie Mary Anne Street, in 1879.

*Brass Alms Bason.*—

It is embellished with flowers and foliage repoussé, and inscribed "D. D. Paget Bowman, 1879."

There is a very fine Altar Cross here, dating probably from the twelfth century. It stands 2 ft.  $2\frac{1}{4}$  in. high, and is of Limoges enamel. The crucifixion is represented, with a full-length figure of S. Peter, with keys and book, below. The base is a modern addition.

#### HOLMWOOD. S. MARY MAGDALENE.

*Silver Cup.*—Weight,  $20\frac{1}{2}$  oz. Height,  $8\frac{3}{8}$  in. Diam. of bowl,  $4\frac{3}{8}$  in. Depth of bowl,  $2\frac{3}{4}$  in.

London hall-marks of 1845. Makers, Edward Barnard and Sons.

The plain oval bowl rests on a pierced hexagonal stem, with a knop rather above the centre having four bosses. The foot is mullet-shaped in its upper part, with a raised base, sex-foil and cusped. It is inscribed, "A thank-offering by the congregation of S. Mary Magdalene, Holmwood—All Saints, 1848."

*Silver Cup*.—Weight, 15 oz. 19 dwt. Height,  $8\frac{1}{2}$  in. Diam. of bowl,  $4\frac{1}{8}$  in. Depth of bowl,  $3\frac{1}{8}$  in.

London hall-marks of 1854. Maker's initials, E S H.

The bowl is oval, the stem hexagonal with moulded knop, and the foot sex-foil and cusped.

It was presented by Mr. Cazenove, an older cup, dating probably from 1838, and given by Mrs. J. Park Harrison, having been melted down and worked up into the present vessel.

*Silver Paten*.—Weight, 7 oz. 14 dwt. Diam.,  $6\frac{3}{4}$  in. Height,  $1\frac{1}{8}$  in.

London hall-marks of 1837. Makers, J. Wrangham and W. Moulson.

*Silver tankard-shaped Flagon*.—Weight,  $23\frac{1}{5}$  oz. Height,  $10\frac{1}{2}$  in.

London hall-marks of 1837. Maker, Geo. Fox.

The usual star ornament is engraved on the drum of the flagon and on the salver of the paten.

*Silver Alms Bason*.—Weight,  $12\frac{3}{4}$  oz. Diam., 9 in.

London hall-marks of 1848. Maker's initials, E S H.

Inscription as on the larger cup.

#### NORTH HOLMWOOD. S. JOHN THE EVANGELIST.

*Two silver Cups*, each weighing 12 oz. 1 dwt. Height,  $8\frac{1}{4}$  in.

London hall-marks of 1874. Maker, John Figg. These marks appear on the rest of the plate.

In each case the bowl is plain and oval; the stem is divided by a knop with projections; and the foot is sex-foil, with the sacred monogram on one face.

*Two silver Patens*, of equal weight and dimensions. Weight,  $9\frac{1}{5}$  oz. Diam., 7 in. Height,  $2\frac{3}{16}$  in.

Each paten has a sex-foil foot, and the sacred monogram in the centre of the salver.



*Silver Flagon*.—Weight,  $26\frac{1}{2}$  oz. Height, 12 in.

This is a pear-shaped flagon with sex-foil foot, having on one face the sacred monogram. There are two plain bands at intervals round the body.

*Brass Alms Bason*.

#### MICKLEHAM. S. MICHAEL.

*Silver Cup*.—Weight,  $7\frac{1}{8}$  oz. Height,  $5\frac{7}{8}$  in. Diam. of bowl,  $3\frac{5}{8}$  in.; of foot,  $4\frac{1}{5}$  in. Depth of bowl, 3 in.

London hall-marks of 1666:—1. Leopard's head crowned in outline. 2. R A above a mullet in a heart-shaped stamp. 3. Black-letter capital F in a plain shield. 4. Lion passant in outline.

*Silver Paten Cover*.—Weight,  $3\frac{1}{8}$  oz. Diam.,  $4\frac{1}{2}$  in. Height,  $\frac{7}{8}$  in.

Hall-marks as on the cup.

The cup has a wide, rather shallow, straight-sided bowl, gilt-lined, from which the stem widens out into a raised base with a flat edge. On one side of the bowl the letters R S, with a design of Elizabethan character between, are pricked, being the initials probably of Sir Richard Stydolph, Bart., who died in 1676, and was buried at Mickleham.

The same initials are pricked in the centre of the paten cover. This has a flat rim and shallow depressed centre, resting on a stem which widens into a flat foot.

*Silver Cup*.—Weight,  $7\frac{1}{2}$  oz. Height,  $5\frac{9}{10}$  in. Diam. of bowl,  $3\frac{3}{4}$  in.; of foot,  $4\frac{1}{5}$  in. Depth of bowl,  $2\frac{7}{10}$  in.

London hall-marks of 1869. Maker, A. Sibley.

Though differing slightly in weight and dimensions, this cup is exactly like the older one in shape. On the bowl is pricked T G 1870, and under the foot this inscription: "Presented by Thomas Grissell, of Norbury Park, Mickleham."

The donor died in 1872, and was buried here.

*Silver Paten*.—Weight,  $19\frac{1}{2}$  oz. Diam.,  $9\frac{7}{8}$  in. Height,  $3\frac{1}{8}$  in.

London hall-marks of 1701:—1. Britannia. 2. Gi under a mullet in a shaped stamp, the mark of John Gibbons, Foster Lane.<sup>1</sup> 3. Court-hand F. 4. Lion's head erased.

<sup>1</sup> *Old English Plate*, p. 336.

The rim of this paten inclines slightly upwards; the centre is a shallow concave depression, with the usual star ornament in the middle. The stem swells into the foot which has a flat base. Under the salver is this inscription: "Dedicated to the Service of God in the Church of Mickleham by James Tryon Esquire in 1702."

*Silver Paten.*—Weight, 19 oz. Dimensions as above.

London hall-marks of 1702:—1 and 4, as above.  
2. Ra, a raven below, in a shaped stamp, a mark probably of Andrew Raven. 3. Court-hand G.

This is exactly like the paten just described, and has the same ornament and inscription.

*Silver Flagon.*—Weight, 24 oz. Height,  $9\frac{1}{2}$  in. Diam. of mouth,  $3\frac{1}{10}$  in.; of base,  $4\frac{1}{2}$  in.

London hall-marks of 1614:—1. Leopard's head crowned in outline. 2. S over W in a shaped stamp.<sup>1</sup> 3. Lombardic R in a plain shield. 4. Lion passant in outline.

This is a beautiful little tankard-shaped flagon, richly ornamented with five distinct varieties of mouldings of the egg and tongue order. The lid is round and surmounted by a baluster-shaped ornament. The base of the lid projects considerably beyond the mouth. On the thumb-lever there is a chased representation of some creature with spread wings. There is a band of moulding round the top of the drum under the mouth, and another round its lower end. There are mouldings also round the top and edge of the base. This vessel is a good example of flagons of this type, though it cannot claim to have been put to its present use till many years after it was made, having no doubt been amongst the household plate of the family to which the donor belonged. Round the drum is the inscription: "Given by the Lady Elizabeth Stydolfe to the Church of Mickleham in 1667."

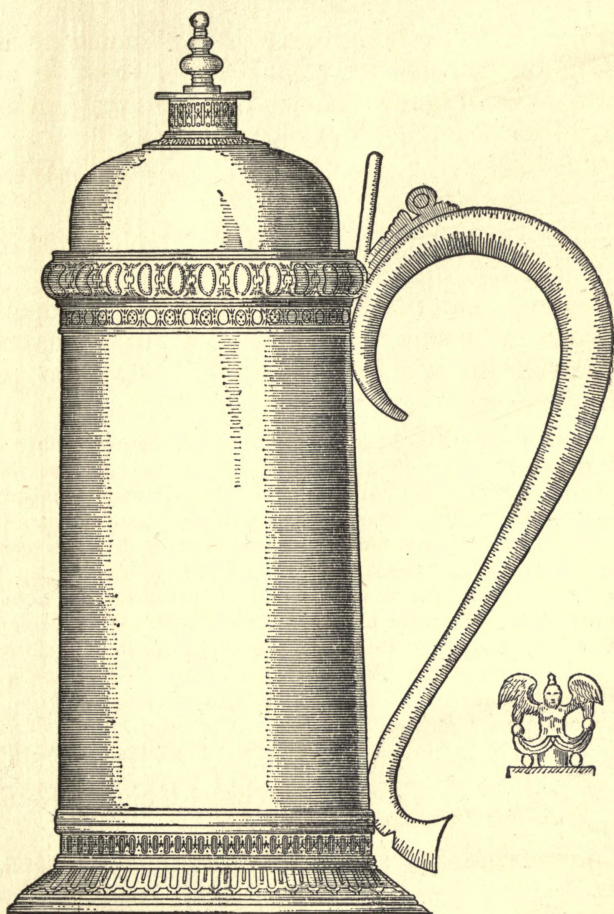
*Silver Flagon.*—Weight, 26 oz. Height,  $9\frac{5}{8}$  in. Diam. of mouth,  $3\frac{5}{8}$  in.; of base,  $4\frac{1}{2}$  in.

London hall-marks of 1702, as on the paten of that date.

This is a copy of the older flagon, and a very good one, the only difference being that the maker has varied the ornamentation, which however is of the same character. It bears the same inscription as the patens of 1701 and 1702.

*Silver Alms Bason.*—Weight,  $32\frac{1}{2}$  oz. Diam., 14 in. Height,  $2\frac{1}{2}$  in.

<sup>1</sup> *Old English Plate*, p. 321.



Thumb-  
piece.

MICKLEHAM.

1614.

Half Size.

face 46.



London hall-marks of 1700:—1 and 4, as above. 2. In a shaped stamp, two pellets above KE, a mullet below; the mark of William Keatt, East Smithfield.<sup>1</sup> 3. Court-hand E.

This is a very handsome bason with deeply sunk centre, and wide rim with a bold gadrooned edge. The centre of the bason is raised, and engraved with the usual star device. On the under side is "Mickleham." Round the rim, in contemporary lettering, is, "To do good and to distribute forget not, for with such sacrifices God is pleased."

*Two brass Basons.*—Diam. of one,  $16\frac{1}{4}$  in.; of the other,  $13\frac{1}{2}$  in.

These curious basons are very old, as old probably as one in Charterhouse Chapel, which has been assigned to the sixteenth century, and like it, are chargers or Tauf beakers of German manufacture. Both are quaintly ornamented with repoussé work. In the centre of one is a representation of the two faithful spies carrying grapes of Eschol. In the same position on the other is a vase containing flowers.

*Wooden Platter gilt.*—Diam.,  $12\frac{1}{4}$  in.

This, too, is old, and may date back 150 years or so. A floral decoration is carved round the rim, and in the centre of the platter, which is slightly sunk, with a flat base, is the sacred monogram in a glory, also carved.

The family of Stydolfe, to which the parish is indebted for most of its communion plate, held the manor of Mickleham, and owned the Norbury estate in the reign of Henry VII. Lady Elizabeth Stydolfe, who gave the old flagon, was wife of Sir Richard Stydolfe, Bart. On his death, in 1676, his estates went to his daughter Margaret, wife of Thomas Tryon, Esq., whose son, Mr. James Tryon, presented the patens and flagon which bear his name, and possibly the silver alms bason also. Manning mentions several brasses and stones in the church to the families of Stydolfe and Tryon from 1576 to 1709.

#### NEWDIGATE. S. PETER.

*Silver Cup.*—Weight, 10 oz.  $18\frac{3}{4}$  dwt. Height,  $8\frac{1}{8}$  in. Diam. of bowl,  $4\frac{1}{2}$  in.; of foot,  $3\frac{7}{8}$  in. Depth of bowl, 5 in.

London hall-marks of 1699:—1. Britannia. 2. A N [as a monogram] e in a shaped stamp, the mark of

<sup>1</sup> *Old English Plate*, 4th Ed., p. 394.

Anthony Nelme, Ave Mary Lane.<sup>1</sup> 3. Court-hand D.  
4. Lion's head erased.

The bowl is bell-shaped, and rests on a thick, short stem, divided by a round knop, whence it swells into the foot. Under the foot is the name of the village, spelt "Nudigate." On one side of the bowl there is the sacred monogram, cross, and nails in a rayed star, which, to judge from the character of the lettering, must have been put on at the time the cup was provided. The words "Newdigate Rectory," engraved on the opposite side of the bowl, were added in the present century.

*Silver Paten.*—Weight, 5 oz. Diam.,  $5\frac{1}{2}$  in. Height,  $1\frac{1}{4}$  in.

Hall-marked as above.

In the centre of the salver, which stands on a small foot, is a star ornament similar to that on the cup; the rim is narrow and plainly moulded.

*Plated Paten and Flagon.*—

Both are inscribed: "To the Glory of God, and in loving memory of Elizabeth Pocock, May 6th, 1886. Given by her Sister."

*Alms Bason.*—Weight,  $6\frac{3}{5}$  oz. Diam., 6 in.

Marks under the base at irregular intervals:—1. An italic *f* reversed. 2. Roman small p. 3. c g, the one above the other and linked, in an oval punch. 4. An irregular line of indents, something like the Nuremburg "saw" mark.

Though not hall-marked, this bason has the appearance of being silver; if so, it is below standard, but is evidently old, being perhaps of the same date as the silver cup and paten. The bowl is round and wide, and has a slight lip, and stands on a flat base. It resembles a plain mazer more than anything else. There is no ornament of any kind about it. It is of considerable interest, whether of the purer metal or not, since it is entirely different in form from the alms basons usually found in churches.

*Two pewter Plates*, each  $8\frac{1}{2}$  in. in diameter.

On both are the following marks: Lion passant, and leopard's head crowned, each in an oval punch; Black letter capital **D** in a plain shield; **I I** in a plain shield. Also two stamps; one, a crowned rose, and the other indistinct, but apparently a flower.

---

<sup>1</sup> *Old English Plate*, p. 334.

## OAKWOOD. S. JOHN THE BAPTIST.

*Silver Cup*.—Weight,  $12\frac{3}{4}$  oz. Height,  $5\frac{5}{8}$  in. Diam. of bowl, 4 in.; of foot,  $3\frac{1}{4}$  in. Depth of bowl, 4 in.

London hall-marks of 1794:—1. Leopard's head crowned. 2. I·K in an oblong stamp, the mark of John King, Fore Street.<sup>1</sup> 3. Roman small t. 4. Lion passant. 5. Head of George III.

As may be gathered from the measurements, the bowl of this cup is disproportionately large. It is deep and bell-shaped, with a moulded band round the centre. On one side is the usual star ornament, and on the other the arms of the family of Evelyn, of Wotton. It is inscribed: "The Gift of Mr. and Mrs. Evelyn of Wotton to Oakwood Church, Surrey. 6 January, 1878."

*Silver Paten*.—Weight, 11 oz. 7 dwt. Diam.,  $8\frac{3}{4}$  in.

London hall-marks of 1844. Maker, J. Figg.

The cipher of the name of Christ, consisting of the Greek capitals, Chi and Rho, is engraved on this plate; and a similar inscription to that on the cup, except that the date is "27th July, 1879."

*Silver Paten*.—Weight,  $13\frac{1}{5}$  oz. Diam.,  $8\frac{1}{2}$  in. Height,  $1\frac{1}{2}$  in.

London hall-marks of 1837. Maker, J. Figg.

Star ornament, arms, and inscription as on the cup.

*Silver Flagon*.—Weight, 21 oz. 17 dwt. Height,  $9\frac{1}{2}$  in.

London hall-marks of 1837. Maker, J. Figg.

This is a tankard-shaped vessel, the drum being open to the flat base. The ornament, arms, and inscription on the cup are repeated.

*Brass Alms Bason*.—

The silver plate replaced the pieces described below, which are preserved in the library at Wotton House.

*Plated Cup*.

*Pewter Cup*.—Height,  $8\frac{1}{5}$  in. Diam. of bowl and foot,  $3\frac{3}{5}$  in. Depth of bowl,  $4\frac{3}{10}$  in.

The bowl of this cup is straight-sided and rounded off below; the stem is almost cylindrical with mouldings round the middle; and the foot is rounded off into an almost flat edge.

---

<sup>1</sup> *Old English Plate*, p. 352.



*Pewter Paten*.—Diam. of salver,  $7\frac{7}{10}$  in.; of foot,  $3\frac{3}{5}$  in. Height,  $2\frac{1}{10}$  in.

The centre is slightly depressed; the rim flat with a moulded edge; the stem is divided by a band of mouldings whence it widens out into the foot. Under the salver, as seen through the hollow stem, is stamped a flower with "TANDIN" above.

*Pewter Plate*.—Diam.,  $8\frac{9}{10}$  in.

Marks:—Leopard's head crowned; Lion passant; also these stamps: (1) A cock with "WITHER" below; (2) Stamp almost obliterated with "B. WITHER IN LONDON" in the surrounding fillet; (3) A crowned rose with "LONDON" above, "MDCXCII" below. Stamped on the rim is  $\text{F}^{\text{R}}\text{E.}$  and  $\text{M}^{\text{R}}\text{E.}$

*Pewter Flagon*.

This is tankard-shaped with a high lid.

These pewter pieces appear to be of the same date, which, judging from one of the stamps on the plate, was 1692.

In *Evelyn's Diary* will be found this entry, under July 14, 1701: "I subscrib'd towards rebuilding Oakwood Chapel, now after 200 years almost fallen down." Perhaps the pewter pieces were provided at this time.

At the Mission Room in this parish are a *Silver Cup* and *Paten Cover*, weighing 5 oz. 9 dwt. and  $3\frac{3}{5}$  oz. respectively, and a *Credence Paten* weighing  $2\frac{1}{5}$  oz., all modern.

#### OCKLEY. S. MARGARET.

*Silver Cup*.—Weight, 8 oz. 13 dwt. Height,  $7\frac{3}{8}$  in. Diam. of bowl,  $3\frac{9}{16}$  in. Depth of bowl,  $4\frac{1}{8}$  in.

London hall-marks of 1614:—1. Leopard's head crowned in outline. 2. Sun in splendour under H S, in a shaped stamp.<sup>1</sup> 3. Lombardic R. 4. Lion passant in outline.

This cup has a rather deep bell-shaped bowl without ornament of any kind, the stem is divided by a knop, and the foot rounded off in the usual way.

---

<sup>1</sup> *Old English Plate*, p. 317.

*Silver Paten*.—Weight, 1 oz.  $11\frac{3}{4}$  dwt. Diam.,  $4\frac{3}{8}$  in.  
Only the maker's mark is legible, being the same as that on the cup.

This is a little round plate, nearly flat.

*Silver Paten*.—Weight, 8 oz. 13 dwt. Diam., 7 in.  
Height,  $2\frac{1}{4}$  in.

London hall-marks of 1716:—1. Britannia. 2. Very much worn; perhaps the mark of Richard Raine, of Fleet Street—R A, a mullet above and below, in a quatre-foil stamp.<sup>1</sup> 3. Roman capital A. 4. Lion's head erased.

Round the rim is, "In usum Eccles : Paroch : de Ockley in Com. Sur. anno : 1716"; and in the centre the sacred monogram, the H pierced by a Latin cross, the whole being in a glory.

*Plated tankard-shaped Flagon and brass Alms Bason.*

#### OCKLEY. S. JOHN.

*Silver-gilt Cup*.—Weight, 9 oz.  $11\frac{1}{2}$  dwt. Height,  $7\frac{3}{4}$  in.

*Silver-gilt Paten Cover*.—Weight, 2 oz. 1 dwt. Diam.,  $4\frac{7}{8}$  in.

On both are the Birmingham hall-marks of 1866. Makers, J. Hardman and Co.

The cup has a conical bowl, the lower part of which is relieved by a slightly raised leaf pattern. The stem is hexagonal, and divided by a large knop with six enamelled bosses, one carrying a cross moline, and each of the others a letter of the holy name, JESUS. The foot is sex-foil, and has on one face a cross in enamel. There is in the centre of the cover an engraved floriated cross in a quatre-foil.

These pieces were presented in 1872, the year of the consecration of the church, by Mrs. Du Sautoy, wife of the Rev. F. P. Du Sautoy, rector of Ockley.

*Two glass Cruets.*

<sup>1</sup> *Old English Plate*, 4th Ed., p. 395.

## RANMORE. S. BARNABAS.

*Silver-gilt Cup*.—Height, 9 in. Diam. of bowl,  $4\frac{1}{2}$  in. Depth of bowl, 3 in.

London hall-marks of 1858.

Round the bowl is, "I will receive the Cup of Salvation and call upon the Name of the Lord"; and on the foot the sacred monogram in Roman and Greek characters alternately.

*Silver-gilt Paten*.—Diam.,  $7\frac{1}{2}$  in.

London hall-marks of 1859.

On the rim is, "O Lamb of God that taketh away the sins of the world, have mercy upon us."

*Silver-gilt Flagon*.—Height, 12 in.

Hall-marks as on the paten. Maker in each case, J. Keith.

It is inscribed "Glory be to God on high."

The plate was purchased at the time of the consecration of the church, each piece being inscribed underneath "S. Barnabas, Ranmore, 1859."

## SHERE. S. JAMES.

*Silver Cup*.—Weight, 7 oz.  $5\frac{5}{6}$  dwt. Height,  $6\frac{1}{2}$  in. Diam. of bowl,  $3\frac{5}{8}$  in.; of foot,  $3\frac{1}{3}$  in. Depth of bowl,  $3\frac{2}{5}$  in.

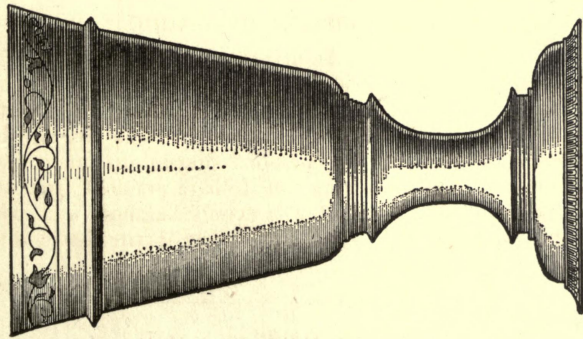
London hall-marks of 1569:—1. Leopard's head crowned in outline. 2. H S interlaced, probably the mark of Henry Sutton.<sup>1</sup> 3. Black-letter small m in a plain shield. 4. Lion passant in outline.

This cup is in shape rather like one by the same maker at Compton. The bowl is an inverted truncated cone, having on it a band of foliage between fillets filled in with perpendicular lines; these, interlacing, divide it four times. The fillets at these divisions are filled in with zig-zag ornamentation, with a diamond-shaped ornament interlacing with the curves; there is a spray of foliage pendent from the lower point of each diamond. The stem is evenly balanced and widens out above and below the knop. Round the edge of the foot is a moulding of egg and tongue character.

---

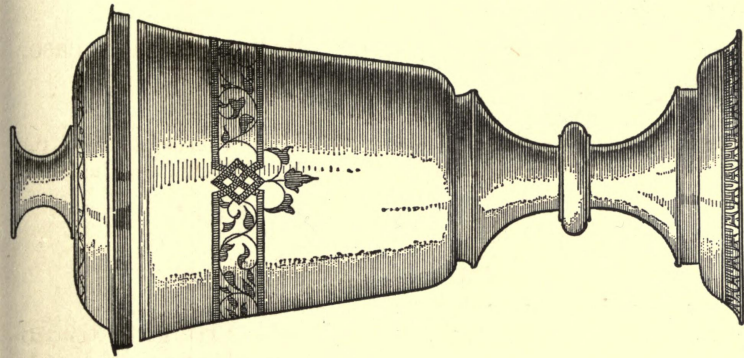
<sup>1</sup> *Old English Plate*, p. 310.





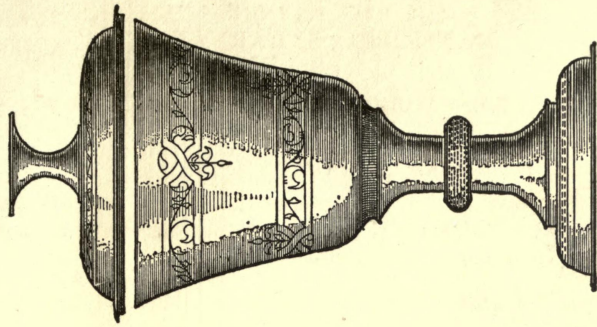
WALTON-ON-HILL. 1568.

(See page 105.)



SHERE. 1569.

All Half Size,



EAST CLANDON. 1569.

(See page 59.)

face 62.

*Silver Cover*.—Weight, 2 oz. 1 dwt. Diam.,  $3\frac{3}{5}$  in. Height,  $1\frac{3}{16}$  in.

The hall-marks are the same as those on the cup.

There is on the shoulder of this cover a band of foliage between plain fillets, which interlace in the usual way and divide it four times.

*Two Cups, two Patens and a Flagon*, all plated.

The plated vessels are at present used in the parish church, the Elizabethan cup and cover having been transferred to the district church of S. Mark, Peaslake.

#### WESTCOTT. HOLY TRINITY.

*Silver-gilt Cup, Paten Cover, and Flagon, and brass Alms Bason*.

The cup is inscribed "Holy Trinity, Westcott. Presented by the Communicants of the Parish, 1887."

#### WOTTON. S. JOHN THE EVANGELIST.

*Silver Cup*.—Weight,  $12\frac{3}{4}$  oz. Height,  $7\frac{7}{8}$  in. Diam. of bowl, 4 in.; of foot,  $3\frac{3}{16}$  in. Depth of bowl,  $4\frac{1}{4}$  in.

London hall-marks of 1753:—1. Leopard's head crowned in plain pointed shield. 2. R.C. in an oblong stamp, the mark of Robert Cox, Fetter Lane.<sup>1</sup> 3. Roman small s. 4. Lion passant in a plain oblong.

The bowl, on which is engraved the usual star device, is bell-shaped; the stem is divided by a small moulding from which it swells out above and below, widening into the foot which is plainly moulded.

*Silver Paten*.—Weight, 9 oz. 2 dwt. Diam.,  $7\frac{1}{8}$  in. Height, 2 in.

London hall-marks of 1685:—1. Leopard's head crowned in oval stamp. 2. R.C. between pellets, in a round stamp with an inner dotted circle.<sup>2</sup> 3. Black-letter small h in a plain shield. 4. Lion passant in a plain oblong.

<sup>1</sup> *Gilda Aurifabrorum*, p. 182.

<sup>2</sup> *Old English Plate*, p. 330.

The stem, which is rather thick, swells into the foot which is moulded. In the centre of the salver is a coat of arms, in stiff feathering, intended to be az. a griffin passant and a chief or, *for Evelyn*, impaling or, a chief sa., *for Browne*. These were the arms borne by the celebrated John Evelyn ("Sylva"); and since they are found on the paten, it may fairly be supposed that he gave it. He was not, however, owner of Wotton House at the time, as he only succeeded to the estate on the death of his elder brother George, in 1699.

*Silver Paten*.—Weight, 8 oz. 13 dwt. Diam.,  $7\frac{1}{2}$  in.

The London hall-marks, possibly, of 1724:—1 and 2, illegible. 3. Indistinct; perhaps a Roman capital I. 4. Lion passant.

This is an ordinary silver plate with the star ornament in the centre. Under the rim it is inscribed: "The gift of Lee Steere Steere, Esq<sup>r</sup>. To the Parish of Wootton."

The donor was son of Richard Witts, Esq., of Evershed Place, in the parish of Ockley, by Martha, sole daughter and heir of Lee Steere, Esq., of Jayes, in the parish of Wotton. In 1796 Mr. Witts dropped his surname and became Lee Steere Steere. He died in 1832. There is a tablet to his memory in Ockley Church.

*Silver Paten*.—Weight, 4 oz. 2 dwt. Diam.,  $6\frac{3}{10}$  in.

London hall-marks of 1857. Maker, J. Keith.

In the centre is the sacred monogram in a double triangle, and on the rim a cross botonné. It is also inscribed, "St. John's Church, Wotton, A.D. 1858."

*Silver Flagon*.—Weight, 19 oz. 2 dwt. Height, 11 in. Diam. of mouth,  $3\frac{7}{10}$  in.; of base,  $6\frac{1}{2}$  in.

London hall-marks of 1706:—1. Britannia. 2. F A in an oval stamp, the mark of William Fawdery, Goldsmith Street.<sup>1</sup> 3. Court-hand L. 4. Lion's head erased.

This is a well-proportioned tankard-shaped vessel with a high lid. The arms found on the paten of 1685 are repeated on the drum, encircled by stiff feathering. Below there is this inscription: "The Gift of Mary Evelin, widdow of John Evelin Late of Wootton Esq<sup>r</sup>." The chief interest attached to this flagon is, that it was evidently given in memory of John Evelyn the year after his death.

The donor was daughter and heir of Sir Richard Browne, of Sayes Court, Deptford, by a daughter of Sir John Pretymann. She married Mr. Evelyn in 1647, being at the time barely thirteen years of age, and died in 1709 in her 74th year.

---

<sup>1</sup> *Old English Plate*, p. 334.



*Rural Deanery of Guildford.*

## ALBURY. SS. PETER AND PAUL.

*Silver Cup*.—Weight,  $16\frac{2}{5}$  oz. Height,  $8\frac{3}{4}$  in. Diam. and depth of bowl,  $4\frac{3}{4}$  in. Diam. of foot,  $4\frac{3}{4}$  in.

London hall-marks of 1714:—1. Britannia. 2. In a shaped stamp, F A, a fleur-de-lys above, a mullet below, the mark of Thomas Ffarrer, in Swithing Lane.<sup>1</sup> 3. Court-hand T. 4. Lion's head erased.

*Silver Paten Cover*.—Weight,  $6\frac{1}{5}$  oz. Diam.,  $5\frac{7}{10}$  in. Height,  $1\frac{3}{4}$  in.

Hall-marks as above.

The cup has a deep bell-shaped bowl resting on a thick stem, which, with the knop and foot, is of one piece of metal.

*Silver Flagon*.—Weight, 45 oz. 19 dwt. Height,  $12\frac{3}{4}$  in. Diam. of mouth,  $4\frac{1}{4}$  in.; of base,  $7\frac{3}{10}$  in.

Hall-marks as above.

This is a massive vessel with a wide spreading base. The lid is oval, and surmounted by an ornamental knob.

*Silver Alms Bason*.—Weight, 29 oz. 3 dwt. Diam.,  $12\frac{1}{2}$  in.

Hall-marks as above.

The usual star ornament is engraved on each piece. There is also this inscription: "The gift of Heneage, Lord Guernsey [Master of the Jewell House] to the Parish of Albury the place of his birth. 1714."

The donor was the second son of Heneage Finch, 1st Earl of Nottingham. He was elected M.P. for Oxford University in 1678, and for Guildford in 1685. He acquired celebrity at the trial of the seven bishops in 1688, on whose behalf he acted as advocate. In 1702 he was raised to the peerage with the title of Baron Guernsey, and twelve years subsequently was created Earl of Aylesford. He was lord of the manor of Albury, having purchased it from the Duke of Norfolk, and died in 1719.

<sup>1</sup> *Old English Plate*, 4th Ed., p. 397.

## S. MARTHA'S CHAPEL.

*Silver Cup*.—Weight,  $7\frac{1}{2}$  oz. Height,  $6\frac{1}{2}$  in. Diam. of bowl, 3 in. Depth of bowl,  $3\frac{1}{2}$  in.

London hall-marks of 1780 :—1. Leopard's head crowned. 2. cw in an oblong stamp, the mark of Charles Wright, Ave Maria Lane.<sup>1</sup> 3. Roman small e. 4. Lion passant.

*Silver Paten*.—Weight,  $4\frac{3}{4}$  oz. Diam., 5 in. Height,  $1\frac{1}{2}$  in.

Hall-marks as above.

These pieces are similar in design to the corresponding ones at Albury, though smaller. On both is engraved the star ornament.

## ASH. S. PETER.

*Silver Cup*.—Weight, 6 oz.  $7\frac{1}{2}$  dwt. Height,  $6\frac{2}{5}$  in. Diam. of bowl,  $3\frac{1}{4}$  in. ; of foot, 3 in. Depth of bowl,  $3\frac{5}{8}$  in.

London hall-marks of 1575 :—1. Leopard's head crowned in outline. 2. L S interlaced in a shaped stamp. 3. Black-letter small s in a plain shield. 4. Lion passant in outline.

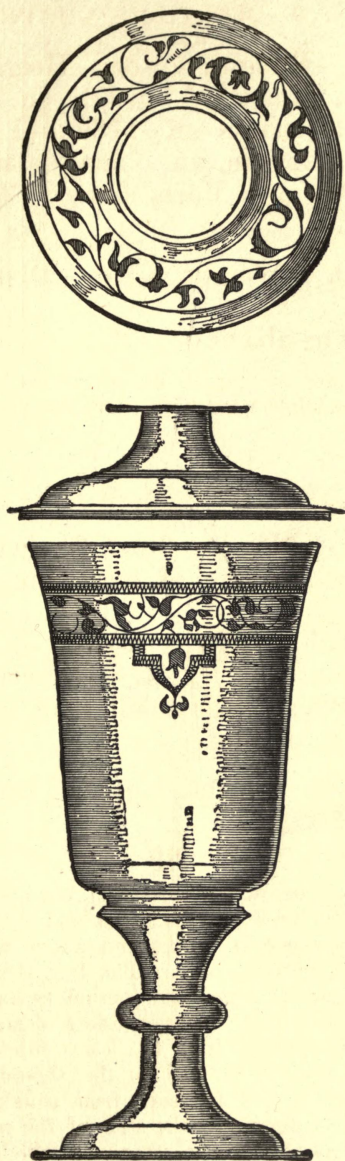
*Silver Cover*.—Weight, 1 oz.  $16\frac{1}{2}$  dwt. Diam.,  $3\frac{1}{2}$  in. Height, 1 in.

Hall-marks as on the cup.

The cup has a narrow, straight-sided bowl, swelling out slightly at the rim. Its stem is evenly balanced and divided by a round knob between fillets, whence it swells out above and below ; its upper end has a narrow vertical edge. The foot is rounded off into a flat edge, which appears at some later period to have been strengthened. There is a band of foliage between fillets of zig-zags round the bowl, with an ornament pendent from the lower fillet, repeated three times. There is also a band of foliage on the shoulder of the cover, worn through in one place, and flattened from constant usage. It will be noticed in the illustration that the stem of the cover is narrower where it joins the flat foot than at the other end, which is a rather uncommon feature.

---

<sup>1</sup> *Gilda Aurifabrorum*, p. 191.



ASH, S. PETER.

1875.

Half Size.

face 56.



*Silver Paten.*—Weight, 10 oz. Diam.,  $8\frac{1}{2}$  in.

London hall-marks of about 1674:—1. Leopard's head crowned in outline. 2. R L above a fleur-de-lys in a plain shield, the mark probably of Ralph Leeke.<sup>1</sup> 3 and 4, obliterated.

This is a graceful paten without a foot, with a wide flat rim, round the edge of which are some engraved lines; there is the following inscription on the rim: "Hanc Patinam Mensæ Dom<sup>icæ</sup> Sacram Donavit Ecclesiæ d'Ash Gilbertus Coles Rector. 1674<sup>o</sup>."

The donor was instituted to the living in 1669 and died in 1676.

*Silver Flagon.*—Weight, 27 oz.  $6\frac{3}{4}$  dwt. Height,  $9\frac{1}{2}$  in. Diam. of mouth,  $3\frac{5}{8}$  in.; of base,  $5\frac{1}{2}$  in.

London hall-marks of 1734:—Leopard's head crowned in a plain shield. 2. R G T C in a cross-shaped stamp, the mark of Richard Gurney and Thomas Cook "atte ye Golden Cup," Foster Lane.<sup>2</sup> 3. Roman capital T. 4. Lion passant in plain oblong.

This is a well-designed, tankard-shaped flagon with oval lid, not at all unlike one at Chiddingfold, made by the same firm a few years subsequently. There is this inscription on the drum: "Edward, the Son of Edward Emms late Rector of Ash, gave by his last Will and Testament, Fifty pounds to the Said Parish of Ash, which was laid out by John Harris the Present Rector, in new fronting the Seats and Gallery, and in making two New Windows to the Church, & in buying this flaggon for the Use of the Holy Sacrament, Anno Dom<sup>i</sup> 1730." Also these arms: or, out of a fesse, sa. a demi lion, rampant, issuant, gu. *for Emms*. The coat is encircled by a scroll and foliage border surmounted by a winged cherub's head.

*Brass Alms Bason.*

#### ASH. S. MARY.

*Silver Cup.*—Weight, 9 oz. 11 dwt. Height,  $7\frac{1}{4}$  in. London hall-marks of 1887. Maker's mark, F B M in oblong stamp.

Round the bowl is, "I believe in the Communion of Saints."

*Silver Paten.*—Weight,  $2\frac{1}{5}$  oz. Diam.,  $5\frac{3}{8}$  in. Hall-marks as above.

<sup>1</sup> *Old English Plate*, p. 328.

<sup>2</sup> *Gilda Aurifabrorum*, p. 174.

It is inscribed on the rim, "He was known of them in breaking of bread;" and on the under side, "Church of S. Mary, Ash Vale, All Saints Day, 1887."

These pieces were given by Lieut.-Col. John Bridges Walker, of Ash Vale, in 1887.

*Silver-mounted glass Flagon and brass Alms Bason.*

#### BRAMLEY. HOLY TRINITY.

*Silver Cup.*—Weight, 12 oz. Height,  $8\frac{1}{8}$  in. Diam. of bowl, 4 in.; of foot,  $4\frac{3}{8}$  in. Depth of bowl,  $4\frac{3}{10}$  in.

London hall-marks of 1664:—1. Leopard's head crowned in outline. 2. P D, a mullet below, and perhaps some object above, in a plain shield. 3. Black letter capital C. 4. Lion passant in outline.

*Silver Paten Cover.*—Weight,  $3\frac{3}{4}$  oz. Diam.,  $4\frac{9}{10}$  in. Height, 1 in.

Hall-marks as on the cup.

The cup has a deep, straight-sided bowl swelling out slightly at the lip; its stem is divided by a plain round knop, from which it spreads out above and below, and the foot is rounded off into a flat disc. On one side of the bowl there is a cross with engraved ornament on the limbs, and rays issuing from the angles; on the opposite side is the usual rayed star with monogram, cross, and nails. This latter is repeated on the cover, the foot of which is a disc, attached to the upper part by a stem swelling from the centre above and below.

*Silver Paten.*—Weight,  $11\frac{3}{4}$  oz. Diam.,  $7\frac{1}{4}$  in. Height,  $2\frac{1}{10}$  in.

Date, about 1592. Only the maker's mark is stamped on it, viz.: WH, a rose below, in a plain shield. This mark is found on a pair of flagons at Rendcombe, Gloucestershire, made in 1592.<sup>1</sup>

The upper part rests on a trumpet-shaped stem which spreads into the disc forming the foot. At a later date the star ornament, as found on the above paten cover, has been placed on the salver. The shape of this paten is unusual, especially at the period to which it evidently belongs.

*Silver Flagon.*—Weight,  $30\frac{1}{4}$  oz. Height,  $9\frac{4}{5}$  in.

<sup>1</sup> *Old English Plate*, p. 313.

Birmingham hall-marks of 1849. Maker's mark, E & B in an oblong stamp.

This is a tankard-shaped vessel having on one side of the drum, "Bramley 1849," and on the other, the rayed star as on the patens.

*Silver Bason*.—Weight, 18 oz. 12½ dwt. Diam., 9¾ in.

Marks:—1. Full-faced classical bust of a man between 8 and 5, in an oval stamp. 2. A ram in an octagon. 3. In a diamond-shaped stamp, J before a fleur-de-lys, the rest obliterated. 4. Illegible.

In the opinion of Mr. Cripps these are provincial French marks as used from 1797 to September 1809. The figures on either side of the bust signify the Department, being probably that of "Yonne," in which case the Bureau would be "Auxerre." Round the edge is a honeysuckle gadroon ornament. This bason is below the English standard and is no longer used.

Symmes, in his transcript, mentions an "antient Church Booke" here of 1491-2, containing this reference to the mediæval plate of the parish: "ij Chaleys of silver, that one whole, that other broken. . . . Alsoe iij Candlesticks of Laten. . . . Alsoe five Crewetts of Pewter."<sup>1</sup>

#### EAST CLANDON. S. THOMAS OF CANTERBURY.

*Silver Cup*.—Weight, 4⅔ oz. Height, 5 in. Diam. of bowl, 3⅛ in.; of foot, 2¾ in. Depth of bowl, 2½ in.

London hall-marks of 1569:—1. Leopard's head crowned in outline. 2. I P in a shaped stamp.<sup>2</sup> 3. Black-letter small m in a plain shield. 4. Lion passant in outline.

*Silver Cover*.—Weight, 1⅔ oz. Diam., 3¼ in. Height, 1¼ in.

This is a very pretty little cup, and in good preservation. The bowl, straight-sided in its lower part, widens out at the lip; the stem which is nearly cylindrical is divided by a round knop; and the foot is rounded off in the usual way. High up on the bowl there is a belt of foliage between plain fillets, which interlace four times at intervals; at each of these divisions a spray of foliage hangs downwards. Lower down the belt is repeated, with this difference, that at the interlacements

<sup>1</sup> Additional MSS., 6167.

<sup>2</sup> *Old English Plate*, p. 309.



the spray is pointed upwards. The knop is covered with engraved hyphens, and there is a band of the same ornament round the upper part of the foot. There is a plain band of foliage on the cover; and on the disc which forms the foot, the date in contemporary figuring, 1570, the year no doubt in which it was provided.

*Silver Cup*.—Weight, 10 oz.  $18\frac{3}{4}$  dwt. Height, 7 in. Diam. of bowl,  $4\frac{1}{8}$  in.; of foot, 4 in. Depth of bowl,  $3\frac{1}{2}$  in.

London hall-marks of 1661:—1. Leopard's head crowned in outline. 2. In a heart-shaped stamp G(?)D, a mullet below. 3. Black-letter capital M. 4. Lion passant in outline.

This cup has a straight-sided bowl, baluster stem, and spreading foot. The usual star ornament is engraved on the bowl.

*Silver Paten*.—Weight,  $12\frac{3}{4}$  oz. Diam., 9 in. Height, 2 in.

London hall-marks of 1675:—1 and 4, as above. 2. In a quatre-foil stamp, W·H, a mullet above, an annulet below. 3. Black-letter capital S.

The centre of the salver is slightly sunk, and bears the same ornament as the cup, and the rim is nicely moulded. The stem spreads out into the foot, the two being formed out of one piece of metal.

There is this entry in the Churchwardens' book under the year 1679: "One silver chalice and one server being the gift of the R<sup>t</sup> honoble the Countess of Longford." These vessels were evidently given in the previous year, since they are not mentioned amongst the church goods handed over to the parish officers elected in 1678, but *were* handed on by them to their successors in 1679.

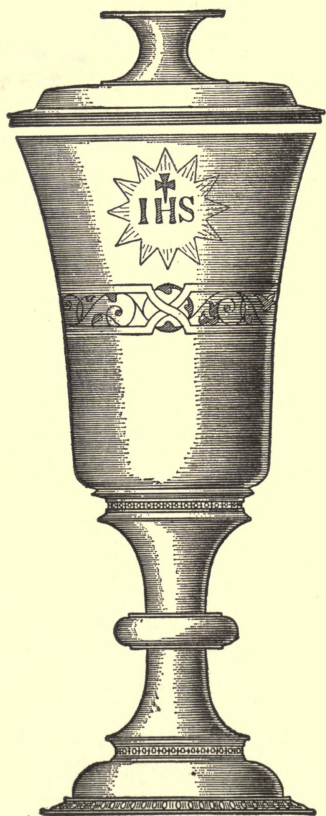
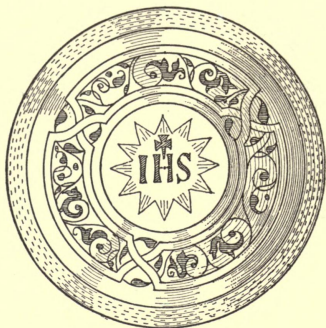
The donor was wife of Francis Aungier, created Earl of Longford in 1677. She was daughter of Arthur Chichester, first Earl of Donegal, and widow of John Butler, Earl of Gowran. The Earl of Longford was at this time lord of the manor of East Clandon, having inherited it from his uncle Gerard, Lord Aungier.

*Silver Plate*.—Weight, 9 oz. 2 dwt. Diam.,  $7\frac{1}{4}$  in.

London hall-marks of 1776:—1. Leopard's head crowned in a round shield. 2. W·I followed by two pellets one above the other, in an oblong stamp.<sup>1</sup> 3. Roman small a. 4. Lion passant in an oblong.

The usual star ornament is engraved in the centre. It is inscribed, "Ex dono Josephi Greenhill Anno Domini 1776." He was rector of the parish from 1732 to 1788.

<sup>1</sup> *Old English Plate*, 4th Ed., p. 390.



WEST CLANDON. 1379.

Half Size.

face 61.

*Plated Flagon.*—

Inscribed, "Parish of East Clandon. The Gift of George Holme Sumner, of Hatchlands, Esq., 1833." It is now used at the font.

The donor inherited Hatchlands in this parish from his father. He sat in three Parliaments as Knight of the Shire for Surrey, and in two as member for Guildford, and died in 1838.

In the Churchwardens' book already referred to, there are further interesting entries respecting some pewter vessels now lost, and the altar furniture in use at the time. The first is in 1590, and runs thus: "Item. iij table clothes of linnen, j green table cloth, j of bukerame, a surplesse, one basen of pewter with a cupe of silver," this last being the Elizabethan cup still in use.

In 1638 is found the next reference, viz.: "A silver challice with a cover, a green carpet for the Communion table, a pewter bason, a surplice, 2 glasse bottles covered with leather."

In the following year but one glass bottle is mentioned, though the two occur in 1641; both had disappeared by 1649. "2 pewter potts for the Communion table" were provided in 1638. The pewter flagons and plate were still in use in 1717. At that time are also found "one holon cloth to cover the Elements, one hood."

## WEST CLANDON. SS. PETER AND PAUL.

*Silver Cup.*—Weight, 6 oz.  $2\frac{1}{2}$  dwt. Height, 7 in. Diam. of bowl and of foot, 3 in. Depth of bowl, 4 in.

London hall-marks of 1569:—1. Leopard's head crowned in outline. 2. I C in a shaped stamp.<sup>1</sup> 3. Black letter small m. 4. Lion passant in outline.

*Silver Cover.*—Weight, 2 oz.  $2\frac{1}{2}$  dwt. Diam.,  $3\frac{1}{4}$  in. Height,  $1\frac{1}{4}$  in.

Hall-marks as above.

The bowl of the cup is straight-sided below with a flat base, and swells out considerably at the lip. Round it there is a belt of foliage between plain fillets which, interlacing, divide it three times. Above this the sacred monogram in a rayed star is engraved. There is a plain round knob between fillets in the centre of the stem which swells out at both ends into vertical edges, round which runs an egg and tongue moulding. This ornament is repeated on the edge of the foot, which is of the usual shape.

A similar belt to the above is engraved on the cover. Round the rim there is a dot pattern pricked on, and now very faint. On the

<sup>1</sup> *Old English Plate*, 4th Ed., p. 390.



flat of the foot, the star device, as depicted on the cup, is repeated, being in both cases a much later addition.

*Silver Paten.*—Weight,  $7\frac{1}{2}$  oz. Diam.,  $6\frac{1}{2}$  in. Height,  $1\frac{3}{4}$  in.

London hall-marks of 1702 or 1709:—1. Britannia. 2. An anchor between WA in a shield, the mark of Joseph Ward, of Water Lane.<sup>1</sup> 3. Court-hand G or O, partly obliterated. 4. Lion's head erased.

This paten has a flat rim and sunk centre, where the usual star ornament is engraved. The stem is rather thick, and the foot a flat disc. It is inscribed: "The gift of y<sup>e</sup> Right Hon<sup>ble</sup> S<sup>r</sup> Richard Onslow Bar<sup>t</sup> to y<sup>e</sup> Parish Church of West Clandon in y<sup>e</sup> County of Surry, 1712."

The donor was lord of the manor of West Clandon. In 1708 he was chosen Speaker of the House of Commons, and eight years subsequently raised to the peerage with the title of Baron Onslow of Onslow in the County of Salop, and of West Clandon. He died in the following year and was buried at Merrow.

*Silver Flagon.*—Weight, 16 oz. Height,  $7\frac{1}{2}$  in.

London hall-marks of 1855. Makers, E. and J. Barnard.

This is a tankard-shaped vessel with a cross paté on the lid. The sacred monogram is engraved on the drum, and lower down, a band of vine leaves and fruit.

*Glass Cruet*, with silver-mounted top.

*Pewter Flagon.*—Height, 8 in.

This is a massive tankard-shaped flagon. There are traces of four imitation hall-marks on the flat lid which is now detached. It dates probably from the 17th century.

*Pewter Plate.*—Diam.,  $8\frac{5}{8}$  in.

On the rim are four lions passant in as many oval punches, and at the opposite extreme R B, roughly stamped on. There are two stamps underneath—one, a bell with "Beniamin" above, and "Blackwell" below; the other, a crowned rose between two sprays of foliage with "London" above. These pewter pieces are no longer in use.

*Brass Alms Bason.*—

On the rim is, "Lay not up for yourselves treasure upon the earth"; and in the centre of the bowl the sacred monogram in a rayed star. It was given when the church was restored in 1874.

<sup>1</sup> *Old English Plate*, p. 335.

## CRANLEIGH. S. NICOLAS.

*Silver Cup*.—Weight, 14 oz. 11 dwt. Height,  $8\frac{1}{4}$  in. Diam. of bowl, 4 in. Depth of bowl,  $2\frac{3}{4}$  in.

London hall-marks of 1845. Maker, J. Keith.

The only ornament on the round bowl is a small cross botonné in a circle. The stem is hexagonal with an open-work knop, and the foot sex-foil with, on one face, the sacred monogram.

*Silver Paten*.—Weight,  $3\frac{3}{5}$  oz. Diam.,  $6\frac{5}{8}$  in.  
Hall-marks as above.

The centre is a sex-foil depression with the sacred monogram in the midst. On the rim is, "Lord, evermore give us this Bread."

*Silver Paten*.—Weight, 5 oz. 9 dwt. Diam.,  $7\frac{1}{8}$  in.  
London hall-marks of 1789:—1. Leopard's head crowned. 2. H C in an oblong stamp, the mark of Henry Cowper, Whitehall.<sup>1</sup> 3. Roman small o. 4. Lion passant. 5. Head of George III.

A small cross paté in a circle is engraved on the rim.

*Silver Flagon*.—Weight, 18 oz. Height,  $10\frac{3}{4}$  in.  
Hall-marks as on the cup.

This is a jug-shaped vessel, with "Glory be to God on high" on a band round its widest part.

*Brass Alms Bason*.—

The sacred monogram is in the centre, and round the rim is, "Thine are all things, O Lord, and of them we have given Thee."

## EWHURST. SS. PETER AND PAUL.

*Silver Cup*.—Weight,  $10\frac{1}{2}$  oz. Height,  $7\frac{3}{4}$  in. Diam. of bowl, 4 in.; of foot,  $3\frac{5}{8}$  in. Depth of bowl,  $4\frac{1}{4}$  in.

London hall-marks of 1707:—1. Britannia. 2. A N (as a monogram) e in a shaped stamp, the mark of Anthony Nelme, of "Ave Mary Lane."<sup>2</sup> 3. Court-hand M. 4. Lion's head erased.

<sup>1</sup> *Gilda Aurifabrorum*, p. 188.

<sup>2</sup> *Old English Plate*, p. 334.

This cup has a bell-shaped bowl, with these words round the centre, "Drink ye all of It." The stem below the knop spreads into a foot with a flat edge.

*Silver Paten*.—Weight,  $3\frac{3}{5}$  oz. Diam.,  $4\frac{3}{4}$  in.

The same hall-marks as on the cup.

Across the face of the paten are these words, "TAKE=EAT=THIS=IS=MY=BODY."

*Pewter Flagon*.—Height,  $11\frac{1}{2}$  in. Diam. of mouth,  $4\frac{1}{2}$  in.; of base, 5 in.

This is a narrow tankard-shaped vessel with slightly oval lid. Its shape is that of silver flagons, made in the early part of last century, to which date it may be safely assigned.

*Three pewter Plates*.—Two of them are  $9\frac{1}{2}$  in. in diameter; the third measures  $8\frac{1}{4}$  in.

Marks:—1. Leopard's head in an oval stamp. 2. A buckle. 3. W·E. Also these stamps: (1) Prince of Wales' feathers in a round stamp; (2) A rose with "London" below; (3) The letter X.

GRAFHAM. S. ANDREW.

*Silver parcel-gilt Cup*.—Weight, 19 oz.  $11\frac{3}{4}$  dwt. Height,  $7\frac{1}{2}$  in. Diam. of bowl,  $3\frac{3}{4}$  in. Depth of bowl, 3 in.

London hall-marks indistinct; 1854—1860. Maker, J. Keith.

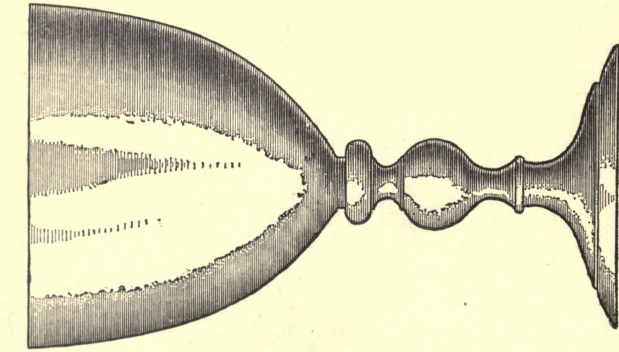
The upper part of the bowl, which is conical, is parcel-gilt. Lower down it is gilt, and jewelled with twelve amethysts tied with a cable ornament, the base being chased and engraved. The stem is a hexagon of blue enamel with bevelled edges, relieved with gilt flowers and foliage, cross, and sacred monogram. There are twelve amethysts above and twelve below the stem, as many being set in the knop which divides it. The foot is sex-foil and cusped, with an amethyst on each face.

*Silver Paten*.—Weight, 4 oz. 2 dwt. Diam.,  $6\frac{1}{4}$  in.

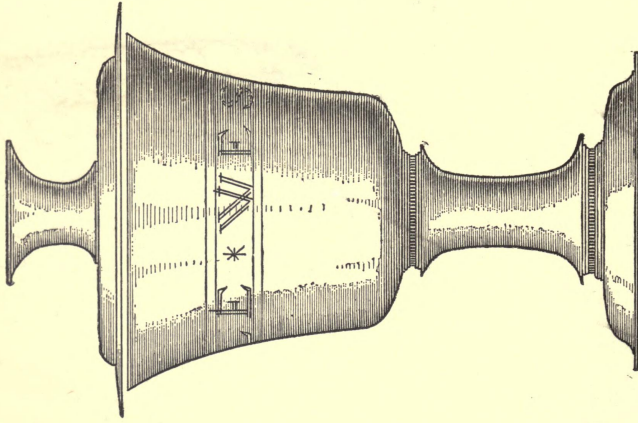
London hall-marks of probably 1854; the date letter is indistinct. Maker, J. Keith.

The centre is sunk, with a slight moulding round the edge. It is filled in with a cross in a gilt vesica, the sacred monogram in Greek and Latin characters being placed one on each side of the lower limb.



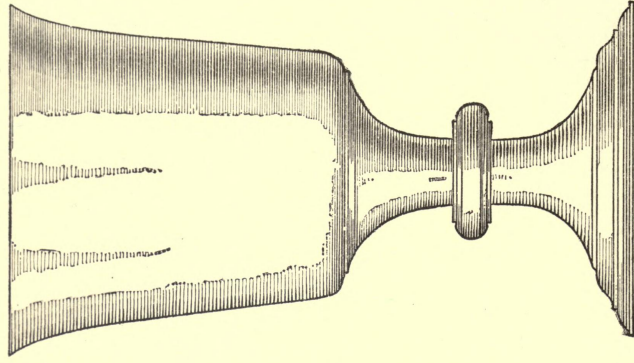


GUILDFORD, S. NICHOLAS.  
1601.



GUILDFORD, HOLY TRINITY.  
c. 1370.

All Half Size.



STOKE, ST. JOHN.  
1599.

(See page 76.)

face 65.

*Ruby glass silver-gilt mounted Flagon.—*

Birmingham hall-marks of 1861, with the mark of J. Keith.

This is a jug-shaped vessel with handle shaped as a pelican. Round the body are two gilt bands set with amethysts. These bands are connected by four others, in each of which is an amethyst. The whole rests on a deep, pierced base, jewelled with eight amethysts.

*Brass Alms Bason.—*

The sacred monogram on a powdered ground is in the centre of the bowl. On the rim is, "Tua sunt omnia, Domine, et de Tuis dedimus Tibi."

The plate was given in 1862.

## GUILDFORD. THE HOLY AND UNDIVIDED TRINITY.

*Silver Cup.*—Weight, 6 oz.  $1\frac{1}{2}$  dwt. Height,  $5\frac{3}{8}$  in. Diam. of bowl,  $3\frac{3}{4}$  in.; of foot,  $3\frac{1}{4}$  in. Depth of bowl, 3 in.

Not hall-marked; date about 1570.

This cup was evidently made at Norwich, where the goldsmiths at this date had a pattern of their own, differing, as Mr. Cripps points out, in several particulars from vessels made elsewhere at the same period. He remarks that at Norwich the bowls of Communion cups "were made wider, shallower, and with straighter sides than in London and elsewhere in England, and they often bore the name of the parish engraved around them instead of the ornament" so generally found on Elizabethan vessels.<sup>1</sup> The cup under consideration may be taken as a good example of this pattern. Round the bowl is rudely engraved "Hale Wessen," or as it is now written "Hail Weston," being the name of the village near S. Neot's, Hunts., to which the cup originally belonged. When the church there was restored a few years ago, this cup was sent to London to be melted down and the silver used in new vessels. The tradesman, however, instead of doing this, provided these new vessels, and kept the old cup, which was in 1885 purchased, though not directly from him, for Holy Trinity Church, where it is used with the paten described below at week-day Celebrations. It has at some time been carefully repaired. The lower rim of the foot is a modern addition. At the time the above cup was purchased for Holy Trinity, nothing was known of its history, nor was any light thrown on the matter till quite lately.

---

<sup>1</sup> *Old English Plate*, p. 173.

*Silver Paten*.—Weight,  $2\frac{1}{3}$  oz. Diam.,  $4\frac{5}{16}$  in. Height,  $1\frac{1}{4}$  in.

Date about 1570. No hall-marks.

This paten, which is worn very thin, though purchased with the Hail Weston cup, does not fit it as a cover, nor did it ever belong to that parish.

*Silver Cup*.—Weight, 13 oz. 3 dwt. Height,  $9\frac{7}{16}$  in. Diam. of bowl and of foot,  $4\frac{5}{16}$  in. Depth of bowl,  $4\frac{1}{2}$  in.

London hall-marks of 1730:—1. Leopard's head crowned. 2. An annulet between E V, with a crescent above, a mark probably of Edward Vincent, of Dean Street, Holborn.<sup>1</sup> 3. Roman capital P. 4. Lion passant.

The bowl of this cup has straight sides curving outwards at the lip, and is rounded off below into a flat base; the stem is straight, widening at both ends, with a round moulding for a knop in the centre. On the bowl, which is gilt lined, is the common star ornament. The foot, which is rounded off into a narrow edge, having become worn through, has at some time been skilfully repaired.

*Silver Cup*.—Weight, 13 oz. 9 dwt.

London hall-marks of 1873. Makers, H. Lias and Son.

This is a copy of the cup just described; the measurements, though varying slightly, are practically the same.

*Silver Paten Cover*.—Weight, 6 oz. 9 dwt. Diam.,  $5\frac{1}{4}$  in. Height,  $1\frac{3}{8}$  in.

The same hall-marks as on the cup of 1730.

On the underside of the foot is the star device. It forms a cover to the cup of the same date.

*Silver-gilt Cup*.—Weight,  $16\frac{3}{5}$  oz. Height,  $8\frac{1}{8}$  in. Diam. of bowl,  $4\frac{1}{4}$  in.; of foot,  $5\frac{3}{4}$  in. Depth of bowl,  $2\frac{5}{8}$  in.

London hall-marks of 1888. Maker, C. Krall.

*Silver-gilt Cup*.—Weight, 16 oz. 7 dwt.

Dimensions and hall-marks as above.

These handsome cups form a pair. In each case the bowl is shallow and conical, and rests on a round stem with moulded ends. The knop is covered with a pattern of engraved leaf ornament, and jewelled with

---

<sup>1</sup> *Old English Plate*, p. 339.



three amethysts and three carbuncles set alternately in a horizontal band. The foot is sex-foil with a raised edge, and has a plain Latin cross on one face.

*Silver-gilt Paten.*—Weight, 6 oz. 11 dwt. Diam.,  $6\frac{1}{8}$  in.

*Silver-gilt Paten.*—Weight,  $6\frac{1}{2}$  oz. Diam.,  $6\frac{1}{8}$  in.

Both have the same hall-marks as on the cups of 1888.

The only ornament is an engraved cross on the rim of each. These silver-gilt pieces were an offering on the occasion of the dedication of the new chancel on the Eve of All Saints, 1888.

*Silver-gilt Paten.*—Weight, 6 oz. Diam., 7 in. Height, 1 in.

London hall-marks of 1691:—1. Leopard's head crowned in oval. 2. A stag between IY in an oval stamp.<sup>1</sup> 3. Black-letter small g. 4. Lion passant in plain oblong.

This paten has a flat moulded rim and rather deeply sunk centre; a stem swelling out at both ends, and a flat round foot. In the centre of the depression the sacred monogram is engraved; above the letter H there is a star, and below it a flaming heart with DC linked in the centre, the initials of the donor; on each side of the heart the star is repeated, and the whole is within a wreath of leaves. On the under side of the rim are these words in Court-hand: "O Lord I have all wayes Loved the habitation of thy house and the place where thine honnour dweleth in the yeare of our Lord God 1692 May 6." Below this, and in the same lettering, is, "Restored and gilded when the Chancel of Holy Trinity Church was consecrated All Saints' Eve 1888." On the flat of the foot there are these arms: chequy purple and argent, a fess ermine, surrounded by stiff feathering; crest, a boar's head, *for Calthorpe*.

The donor was Mrs. Dorothy Calthorpe, though in what way she was connected with Guildford is not known. She gave a very similar paten of the same year and by the same maker to the parish of Long Newton, Wilts.<sup>2</sup>

*Silver-gilt Flagon.*—Weight, 56 oz. 2 dwt. Height,  $12\frac{3}{4}$  in. Diam. of mouth,  $4\frac{1}{4}$  in.; of base,  $7\frac{1}{4}$  in.

London hall-marks of 1757:—1. Leopard's head crowned in a round shield. 2. In a double lined round stamp T·W, C above, W below, the mark of Thomas

<sup>1</sup> *Old English Plate*, p. 331.

<sup>2</sup> *Church Plate of Wilts*, p. 204.

Whipham and Charles Wright, Ave Mary Lane.<sup>1</sup> 3. Old English capital B. 4. Lion passant in oblong.

This tankard-shaped vessel was gilded to match the pieces of 1888 in that year. The usual star ornament is placed on the front of the drum.

*Two glass Cruets* with plated stoppers, *Lavabo Dish* and *Cruet Tray* of brass.

*Two Cruets* and *Lavabo Dish* of engraved glass, given in 1892.

*Sheffield metal Wine Strainer.*

*Silver Alms Bason.*—Weight,  $12\frac{1}{10}$  oz. Diam.,  $9\frac{3}{8}$  in. Height,  $1\frac{1}{4}$  in.

London hall-marks of 1675:—1. Leopard's head crowned in outline. 2. T H, a quatre-foil above and below, in a plain shield. 3. Black letter capital S. 4. Lion passant in outline.

This bason has evidently been cut out of a larger piece of plate, and worked into its present form. The hall-marks belong to the original piece, and were rendered indistinct by the process of remodelling. The sacred monogram in a glory, engraved in the bowl, is out of the centre, and would consequently appear to have belonged to the original piece. On the *underside* of the rim are traces of a coat of arms in stiff feathering, partly cut away, and too indistinct to be identified. The reason of this coat being in such a strange position, I am not able even to suggest. Two centre points are distinctly visible. The bason has a sloping rim, and bowl deeply sunk, with its centre slightly convex.

*Two brass Alms Basins.*—

One was an offering by some members of the congregation in 1869, and has on the rim: "Charge them who are rich in this world that they be ready to give and glad to distribute." The other was given in 1888.

*Six pewter Plates.*—Each 10 in. in diameter.

They are stamped with a crowned rose, with "made in London" in the margin; the letter X crowned; and "Superfine hard metal;" and are no longer used.

Two very curious old *Wooden Collecting Boxes* are also preserved, each measuring  $9\frac{1}{2}$  in. long, including the handle, and  $2\frac{3}{4}$  in. across the receptacle for alms.

<sup>1</sup> *Old English Plate*, p. 346.

The only entry in the existing parish books relating to the plate is :  
 "1838, Feb. 7. Expended on Communion Plate £1.0.0."

This was the share of Holy Trinity parish in the purchase of a set of Communion vessels to be used in common with the parish of S. Mary.

In an ancient Churchwardens' book dating from 1509 to 1558, quoted by Richard Symmes,<sup>1</sup> but now lost, were these entries :—

In 1511 was expended "for the new chalys xl.iiij.s.;" and the following year *iiijd.* was paid for a "a case for a chalypse."

In 1515 the sum of *viiijd.* was "payd for a payr of cruets of pewter."

Only one chalice is mentioned in King Edward's Inventory as being here; this was "of silver parcell gilte poiz by estimacion xiiij oz." This Symmes gives from an Inventory dated July 23, 1558, as "a chalysse of silver parcell gylt with the patent." This may have been the one purchased in 1511; if so, a considerable sum beyond the mere price of the silver must have been paid for elaborate design.

In use in the Chantry founded in this church by Sir Richard Weston, Knt., in 1540, was, according to the Land Revenue Records, some parcel-gilt plate, weighing  $8\frac{3}{4}$  oz., valued at  $42/3\frac{1}{2}$ .

#### GUILDFORD. S. MARY THE VIRGIN.

*Silver Cup.*—Weight, 14 oz. 13 dwt. Height, 9 in. Diam. of bowl,  $4\frac{1}{4}$  in.; of foot, 4 in. Depth of bowl,  $4\frac{1}{4}$  in.

London hall-marks of 1828. Makers, Rebecca Emes and Edward Barnard.

The bowl, gilt-lined, is straight-sided, rounded off below, with mouldings at the lip, and rests on a baluster stem.

*Silver Paten.*—Weight, 13 oz.  $4\frac{1}{2}$  dwt. Diam.,  $7\frac{1}{2}$  in. Height,  $1\frac{3}{4}$  in.

London hall-marks of 1829. Makers, Edw. Barnard and Sons.

*Silver tankard-shaped Flagon.*—Weight, 36 oz. 9 dwt. Height,  $11\frac{1}{4}$  in.

Hall-marks as on the paten.

*Silver Alms Bason.*—Weight, 12 oz. Diam.,  $8\frac{1}{2}$  in.

Hall-marks as on the paten.

<sup>1</sup> Additional MSS., 6167.



The sacred monogram in a glory is engraved on each of the above pieces, which were purchased by subscription in 1829. The weight of the four vessels was then given as 76 oz. 9 dwt., and the price per oz., 9/0. An old cup was sold at that time for £2.

*Silver Cup*.—Weight, 7 oz. 17 dwt. Height,  $6\frac{1}{4}$  in. Diam. of bowl,  $3\frac{1}{8}$  in.; of foot, 4 in. Depth of bowl,  $2\frac{1}{4}$  in.

London hall-marks of 1881.

The bowl, gilt-lined, has a round base, and is straight-sided above. It rests on a slender stem, moulded at both ends, which spreads into the foot. The knop has a moulded band round it.

*Silver Paten*.—Weight,  $4\frac{1}{4}$  oz. Diam.,  $4\frac{1}{8}$  in. Height,  $1\frac{1}{4}$  in.

No hall-marks.

It was made in 1889, for use with the above cup at week-day Celebrations.

*Silver Paten*.—Weight,  $1\frac{3}{5}$  oz. Diam.,  $4\frac{7}{8}$  in.

Only three hall-marks remain, viz.:—1. M P, indistinct, the mark of either Michael Plummer, entered 1791, or of William Pitts, entered 1799. 2. Lion passant. 3. Head of George III.

It is a plain disc, slightly concave, and has been in use here since 1887.

*Two glass Cruets with plated stoppers.*

*Lacquered metal Alms Bason*.—

An offering in 1870. On the rim is, "Charge them who are rich in this world that they be ready to give and glad to distribute."

*Four pewter Collecting Plates.*

Three of these are stamped X; Thomas Phillips. The other has these stamps:—a crowned X; a rose; Jno. Watt, London; and the initials I L M.

Extract from the Churchwardens' Account Book:—

"1833. Dec. 18. Paid for Four Pewter Plates, 5/4."

In the Vestry Minute Book are these references to the Communion Plate:—

1667. "One silver Chalice with a Cover: three pewter flaggons."

1708. "A Comunion Cup of silver w<sup>th</sup> a Cover; three Pewter flaggons; one Pewter Salver."

No doubt the silver cup sold in 1829 is the one mentioned above.

In 1838 the parishes of S. Mary and Holy Trinity together purchased a set of pocket Communion vessels. These are incidentally mentioned in the Vestry Book in 1851, but have since disappeared, apparently some time previous to 1866. In their place a handsome set of silver vessels, consisting of cup, paten, and cruet, was presented in 1891, bearing the London hall-marks of that year. They weigh together 6 oz., and are for use, as were the old ones, in both parishes.

#### GUILDFORD. S. NICOLAS.

*Silver Cup*.—Weight, 8 oz. Height,  $6\frac{5}{8}$  in. Diam. of bowl,  $3\frac{5}{8}$  in.; of foot, 3 in. Depth of bowl,  $3\frac{5}{8}$  in.

London hall-marks of 1601 :—1. Leopard's head crowned in outline. 2. Indistinct; apparently a bird in a round shield. 3. Lombardic D in a plain shield. 4. Lion passant.

This cup is of late Elizabethan pattern, having a V-shaped bowl, baluster stem, and plain sloping foot.

*Silver Paten*.—Weight, 11 oz. 3 dwt. Diam.,  $7\frac{1}{8}$  in. Height,  $2\frac{7}{8}$  in.

London hall-marks of 1791 :—1. Leopard's head crowned in oval shield. 2. E I in an oblong stamp, corners clipped; the mark of Edward Jay.<sup>1</sup> 3. Roman small q. 4. Lion passant. 5. Head of George III.

This is a plain paten with a threaded edge; the stem is unusually high. The sacred monogram, with cross and nails in a rayed star, is engraved in the centre.

*Silver Paten*.—Weight,  $9\frac{1}{2}$  oz. Diam.,  $7\frac{1}{8}$  in.

London hall-marks of 1835.

This is a plate with gadrooned edge, and, "Given by subscription 1835," in the centre.

*Silver Paten*.—Weight, 9 oz. 2 dwt.

Hall-marks of 1835, and dimensions as above.

It is similar to the other paten of the same date, but is inscribed, "The gift of F. M. Weston Esq., 1835."

---

<sup>1</sup> *Old English Plate*, p. 351.

*Silver Flagon.*—Weight, 35 oz. 2 dwt. Height,  $10\frac{1}{4}$  in. Diam. of mouth, 4 in. ; of foot,  $5\frac{3}{8}$  in.

London hall-marks of 1794 :—1, 3 and 4, as on the paten of 1791. 2. T H in an oblong, the mark of Thomas Howell of Bath.<sup>1</sup> 3. Roman small t.

The body of this flagon, on which is the star ornament, is cylindrical and rounded off below ; it is connected with the foot, which is rather wide, by a short stem curving inwards towards the centre ; the cover is domed. Engraved under the base is, “The Gift of Mary Monkland of Bath.”

*Plated Cup.*—

This is about ninety years old, and has an oval bowl, the rim of which is strengthened with a plain half-round wire. The edge of the foot is reeded.

*Two silver-gilt Cups.*—Weight of one,  $13\frac{1}{2}$  oz. ; of the other, 14 oz. Dimensions, the same in both cases, viz., height,  $7\frac{7}{8}$  in. ; diam. of bowl,  $3\frac{1}{16}$  in. ; depth,  $2\frac{7}{8}$  in.

The bowl of each cup is hemispherical. The knop dividing the hexagonal stem of both cups has six bosses, jewelled in the one case with three garnets, two brilliants and one cluster of small diamonds, in the other with three garnets and three brilliants. The sacred monogram is engraved on one face of the sex-foil foot of one cup ; in the same position on the other is a trefoil of gold jewelled with one sapphire and two brilliants.

*Two silver-gilt Patens.*—Each weighing 4 oz. 15 dwt., and measuring in diameter, 6 in.

The sacred monogram is in the centre of each.

*Silver-gilt Flagon.*—Weight, 39 oz. 18 dwt. Height,  $12\frac{1}{2}$  in.

The sacred monogram is engraved on the lid of this vessel, which is jug-shaped.

*Silver-gilt Alms Bason.*—Weight, 24 oz. Diam.,  $12\frac{1}{2}$  in.

In the centre is the sacred monogram.

These silver-gilt pieces have on them an engraved ornament of tendrils and grapes, and are of what is known as the Camden pattern, and were made by the Goldsmiths' Alliance, of Cornhill. They all

---

<sup>1</sup> *Gilda Aurifabrorum*, p. 190.



bear the hall-marks of 1872, and are inscribed, "S. Nicolas Church, Guildford, A.D. 1873." The donor was Miss Verschoyle, of Bury Street, Guildford; but the jewels on the cup, which were added in 1878 and 1879, were given by Miss Gillet, of S. Katharine's in the same town.

*Three glass Cruets*, one silver-mounted, the others with plated mounts.

*Silver Spoon.*

This is Norwegian, and was probably a christening spoon. On the handle, which terminates in a crown, are the letters M D S, and on the bowl, a cross.

*Metal-gilt Strainer.*

*Brass Alms Bason.*—

This is handsomely chased with a cable moulding round the edge. In the centre is the sacred monogram in relief on a foliated cross. The text on the rim is, "He that giveth to the poor lendeth to the Lord, and look, what he layeth out it shall be paid him again."

MERROW. S. JOHN THE EVANGELIST.

*Silver Cup.*—Weight, 14 oz. 11 dwt. Height,  $8\frac{3}{16}$  in. Diam. of bowl, 4 in. Depth of bowl,  $2\frac{7}{8}$  in.

London hall-marks of 1851. Maker, J. Keith.

The bowl is conical and gilt-lined, stem hexagonal, and foot sexfoil, with on one face the sacred monogram under an ogee arch. A large hollow knop divides the stem, having six bosses with traceried openings above and below. Under the foot is, "Merrow Church, Anno dñi MDCCCLII."

*Silver Paten.*—Weight,  $7\frac{1}{4}$  oz. Diam.,  $6\frac{15}{16}$  in. Height,  $1\frac{3}{4}$  in.

The only mark left is the maker's, and this is indistinct; it is R P, with probably a rose below, in a shaped stamp,<sup>1</sup> found on plate from 1661 to 1690.

This paten may well have been the cover of some cup formerly in use here. It is of the usual shape of vessels of this character in the latter part of the seventeenth century. The rim is relieved with some

---

<sup>1</sup> *Old English Plate*, p. 330.

engraved lines and a plain moulding, and is inscribed, "Ricardus Onslow Arm et Eliſ uxor ejus de Clandon in Coñ Surrey ut dignius celebretur Eucharistia in Ecclesia Parochialia de Merrow adi Clandon Patinam hanc dicarunt. Anō Domini, 1683." On the sunk centre are these arms :—Quarterly, 1st and 4th, arg. a fess gu. betw. six Cornish choughs proper, *for Onslow* ; 2nd, sa. two lions passant or, *for Strangeways* ; 3rd, arg. a chevron sa. in the dexter chief a trefoil slipped of the second, *for Foot* ; on an Escutcheon of Pretence, sa. a bend wavy betw. two dolphins embowed arg. *for Tulse*. Above, an esquire's helmet surmounted by the Onslow crest, viz. : on a wreath a falcon proper, legged and belled or, preying on a partridge of the first.

The donor was eldest son and heir of Sir Arthur Onslow, whom he succeeded in 1688. As already mentioned under West Clandon, where he also presented a paten, he was chosen Speaker of the House of Commons in 1708, and created first Baron Onslow in 1716. His wife, who was associated with him in the gift of this paten, was Elizabeth, daughter of Sir Henry Tulse, Knt., Lord Mayor of London in 1684. The other quarterings on his coat are those of his grandmother, Elizabeth, daughter and heir of Arthur Strangways, Esq., and of his mother Mary, daughter and co-heir of Sir Thomas Foot, Bart., Lord Mayor in 1651.

*Silver Paten*.—Weight, 8 oz.  $8\frac{1}{2}$  dwt. Diam., 7 in. Height,  $1\frac{3}{8}$  in.

Birmingham hall-marks of 1843. Maker's initials, R E A.

This is similar in shape to the above. On the bottom of the foot are the initials C.S., and on the salver "Merrow MDCCCXLIII."

*Silver Flagon*.—Weight, 18 oz.  $4\frac{1}{2}$  dwt. Height,  $10\frac{1}{2}$  in.

Hall-marks as on the cup.

This is a modern pear-shaped vessel, with a band round the widest part of the body, inscribed "Gloria in Excelsis Deo. Alleluia"; and another band higher up with engraved ornament. Under the base is the name of the parish and date as on the cup.

*Brass Alms Bason*.

#### SHALFORD. S. MARY THE VIRGIN.

*Silver Cup*.—Weight, 9 oz. 4 dwt. Diam. of bowl,  $3\frac{1}{2}$  in. ; of foot,  $3\frac{3}{16}$  in. Depth of bowl,  $3\frac{3}{10}$  in.

London hall-marks of 1789 :—1. Leopard's head crowned in a round shield. 2. I·R in an oblong stamp,

the mark of John Robins, S. John's St.<sup>1</sup> 3. Roman small o. 4. Lion passant in oblong. 5. Head of George III.

The bowl, which is gilt inside, is oval, and set in a collar of thread-moulding, whence the stem narrows towards the centre, and widens below into a foot with a raised edge threaded in the upper part.

*Silver Paten*.—Weight, 9 oz. 14 dwt. Diam.,  $8\frac{1}{2}$  in. Hall-marks as on the cup.

The edge of the rim is threaded. The centre of the plate is raised. Underneath it is inscribed, "The Gift of Mrs. Frances Gregory."

*Silver Salver*.—Weight, 7 oz.  $5\frac{3}{4}$  dwt. Diam.,  $6\frac{3}{10}$  in. Height, 1 in.

London hall-marks of 1739:—1. Leopard's head crowned in a plain pointed shield. 2. Two pellets, one above the other, between R A, script letters, in a shaped stamp; the mark of Robert Abercromby, S. Martin's-le-Grand.<sup>2</sup> 3. Roman small d in a plain shield. 4. Lion passant in plain oblong.

This is a salver richly chased with scroll and flower ornament, and raised on three plain feet. There is in the centre a monogram consisting of the letters P H H, and below, the motto "Manus inamica tyrannis;" also two crests, one above, and another, added probably later, below. The first is a cannon mounted on a carriage with the sponge leaning against it; the other is a mailed arm embowed grasping a dagger.

*Silver Flagon*.—Weight, 15 oz. 9 dwt. Height, 7 in. Diam. of mouth,  $2\frac{4}{5}$  in.; of base,  $4\frac{1}{5}$  in.

Hall-marks as on the cup.

This is a miniature tankard-shaped vessel with an oval lid. There are threadings round the edge of the lid and base, and a band of the same moulding round the drum. Under the base is, "The Gift of Robert Austen Esq." He was of Shalford House and grandfather of the present owner, Lt.-Col. H. H. Godwin-Austen, F.R.S.

The usual star device is engraved on the cup, paten and flagon, and the inscription, "Shalford, Surry, 1790."

<sup>1</sup> *Old English Plate*, p. 352.

<sup>2</sup> *Old English Plate*, 4th Ed., p. 400.

*Brass Alms Bason.*

There is a large cross in high relief across the centre. On the rim is, "Freely ye have received, freely give," with raised fleurs-de-lys and crosses alternately at intervals.

## SHAMLEY GREEN. CHRIST CHURCH.

*Electro-plated Cup, Paten, and Flagon.*

## STOKE. S. JOHN THE EVANGELIST.

*Silver Cup.*—Weight, 8 oz.  $8\frac{1}{2}$  dwt. Height,  $6\frac{5}{8}$  in. Diam. of bowl,  $3\frac{7}{10}$  in.; of foot,  $3\frac{3}{5}$  in. Depth of bowl,  $3\frac{4}{5}$  in.

London hall-marks of 1599:—1. Leopard's head crowned in outline. 2. In a shield . . B (the first letter is obliterated), a crescent above and below. 3. Lombardic B in a plain shield. 4. Lion passant in outline.

The rather deep gilt-lined bowl of this cup is straight-sided, widening slightly at the lip; the stem is evenly balanced, and swells from the round knob which divides it above and below. The foot is plainly moulded. The cup, according to an inscription on the upper part of the foot, was repaired in 1826, and the words "Stoke Church" engraved on the bowl. Some lead was very roughly laid on inside the foot at this time, to strengthen it, as the metal was worn very thin, and in one place quite through.

*Silver Cup.*—Weight,  $8\frac{1}{5}$  oz. Measurements as above.

London hall-marks of 1826. Maker's mark, R P in an oblong stamp.

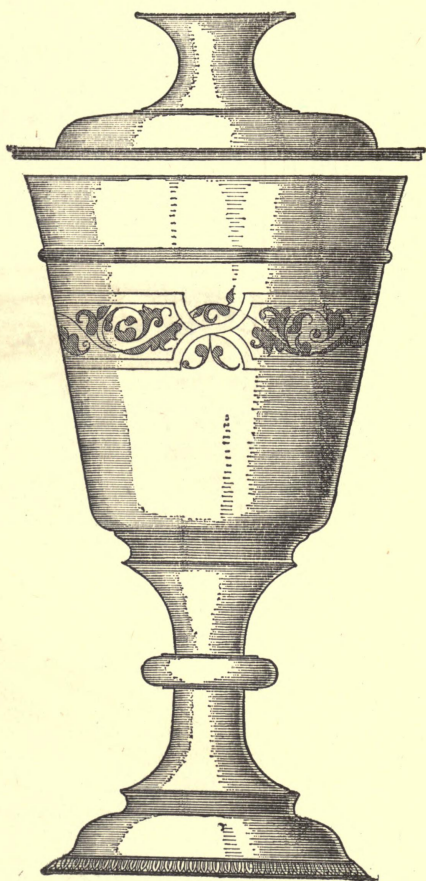
This is a copy of the old cup. On the bowl, which is gilt inside, is, "The offering of a few Friends to Stoke Church, 1826."

*Silver Paten.*—Weight, 9 oz.  $2\frac{1}{4}$  dwt. Diam.,  $7\frac{7}{10}$  in. Height, 2 in.

London hall-marks of 1701:—1. Britannia. 2. In a shaped shield,  $\text{Ja}$ , a trefoil below; the mark of John Jackson, Fleet Street.<sup>1</sup> 3. Court-hand F. 4. Lion's head erased.

<sup>1</sup> *Gilda Aurifabrorum*, p. 175.





WONERSH. 1569.

Half Size.

*face 77.*

This is a well-proportioned paten with a flat rim plainly moulded at the edge, and centre slightly sunk, with the usual star ornament in the middle. The stem widening gradually forms also the foot with a flat edge. Underneath the upper part is, "The gift of Edward Hubbold Esq<sup>r</sup> 1702."

*Silver Flagon.*—Weight, 62 oz.  $17\frac{3}{4}$  dwt. Height,  $13\frac{3}{10}$  in. Diam. of mouth,  $4\frac{7}{10}$  in.; of base,  $6\frac{3}{5}$  in.

London hall-marks of 1631 :—1. Leopard's head crowned in outline. 2. In a hexagon, R W, a mullet above, a pellet below; also a pellet over each letter. 3. Italic small o in a plain shield. 4. Lion passant in outline.

This is a very massive and handsome tankard-shaped vessel, with spreading base and the top of the lid nearly flat. It has no spout. On the drum, which is rather narrower at the top than at the bottom, is engraved the star ornament, with, below it, the same inscription as on the paten.

Mr. Hubbold, the donor of the flagon and paten, was lord of the manor of Stoke and patron of the living. He died in 1707.

#### STOKE. CHRIST CHURCH.

*Two Cups, two Patens, and a Flagon, all plated.*

#### STOKE. S. SAVIOUR.

*Two plated Cups, two Patens, and a Flagon.*

#### STOKE. EMMANUEL.

*Two plated Cups, a Paten and a Flagon.*

The vessels at these chapels-of-ease are all very similar in character, those at Christ Church being rather more ornate than the rest.

#### WONERSH. S. JOHN.

*Silver Cup.*—Weight, 9 oz. 7 dwt. Height,  $7\frac{3}{10}$  in. Diam. of bowl,  $3\frac{9}{10}$  in.; of foot,  $3\frac{1}{2}$  in. Depth of bowl, 4 in.

*Silver Cover.*—Weight, 2 oz. 13 dwt. Diam.,  $4\frac{3}{10}$  in. Height,  $1\frac{1}{2}$  in.

London hall-marks of 1569 on both:—1. Leopard's head crowned in outline. 2. Fleur-de-lys in a shaped shield (possibly the mark of William Dyxson, living at "the Fleur de Luce in Chepe").<sup>1</sup> 3. Black-letter small m. 4. Lion passant in outline.

The bowl of the cup is in shape an inverted truncated cone. About an inch below the edge there is a narrow ribbed band, and lower down still a band of foliage between plain fillets, which divide it four times, twice in single hour-glass curves, and twice in two-fold interlacements. The stem is evenly balanced, swelling out at both ends into vertical edges, round which are ribbings. The knop dividing the stem is much damaged, the stem appearing to have been broken off above it, and clumsily repaired. An egg and tongue moulding runs round the edge of the foot which is of the usual character. On the button or base of the cover the date 1570 is very lightly pricked.

*Silver Paten.*—Weight,  $12\frac{3}{4}$  oz. Diam.,  $8\frac{1}{10}$  in. Height,  $2\frac{9}{10}$  in.

London hall-marks of 1811. Maker's mark, C F above G B in a square stamp.

The salver is concave and rests on a rather thick stem, with a band of nicely-executed and pretty shell and foliage ornament round its lower end. The foot is rounded off into a raised edge, the whole being covered with repoussé work. In the centre of the salver is the usual star ornament, with this inscription beyond the encircling rays:—"Ut dignius celebretur Eucharistia in Eccl. par. de Womersh in Coñ. Surriensi hæc Patina Deo dicata est A.D. 1812. Gul<sup>mo</sup> H. Cole Vicario. J. Sparkes et E. Chitty Sacrorum Custodibus."

*Silver Flagon.*—Weight, 36 oz. 18 dwt. Height,  $10\frac{1}{2}$  in.

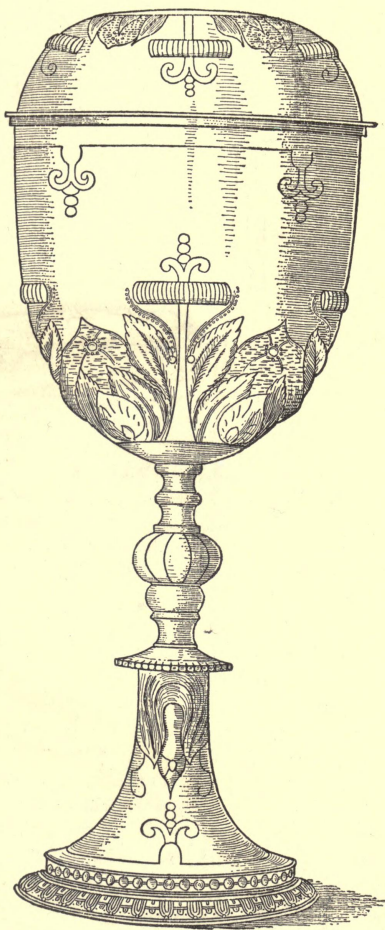
London hall-marks of 1817. Maker's mark, S H in an oblong stamp.

This is a tankard-shaped vessel with chasing on the handle and round the edge of the domed lid. The star ornament is in front of the drum, the cross in this case being a Latin one.

---

<sup>1</sup> *Old English Plate*, pp. 48 and 309.





WORPLESDON. 1616.

Half Size.



## WORPLESDON. S. MARY.

*Silver-gilt Cup.* Weight, 13 oz. 13 dwt. Height,  $8\frac{7}{10}$  in. Diam. of bowl,  $3\frac{3}{4}$  in.; of foot,  $3\frac{3}{8}$  in. Depth of bowl,  $3\frac{5}{8}$  in.

London hall-marks of 1616:—1. Leopard's head crowned in outline. 2. Some object between T F, in a shaped stamp. 3. Lombardic T in a plain shield. 4. Lion passant in outline.

*Silver-gilt Cover.*—Weight,  $2\frac{1}{2}$  oz. Diam., 4 in. Height,  $1\frac{1}{4}$  in.

Not hall-marked.

The bowl of this handsome cup is straight-sided, with oval base, and rests on a baluster stem, terminating in a chased flange, with fretted edge, whence the foot widens out into a vertical end, with a moulding formed of annulets below it. A species of egg-moulding runs round the edge of the foot. High up on the bowl there is an engraved horizontal line, pendent from which is an ornament of Elizabethan character repeated at intervals; this occurs again on the wide part of the foot, the ornament, however, pointing upwards. Round the lower part of the bowl there is a design of stiff foliage repoussé, which is repeated on the spread of the foot. There is this inscription on the bowl: "The gift of Mrs Sarah Barlow of Lockerly in Hampshire, who departed this life y<sup>e</sup> 31<sup>st</sup> Aug<sup>t</sup> 1710 in y<sup>e</sup> 85 year of Her Age." On the foot is "Worplesdon in Surrey, 1800."

The repoussé work is repeated on the cover, which, in its original state, was surmounted by a pyramidal ornament with perhaps a figure at the top, similar to that found on the cover of a cup of the same class at Linton, in Kent. Having regard to the fact that the cup with its cover, though made in 1616, was not given for use at Holy Communion in Eton College Chapel till nearly a century later, it is evident that it was originally family plate. The whole of the silver communion plate at Worplesdon, with the exception, perhaps, of the paten with a vernicle, was brought from Eton College in 1800, as is supposed, during the incumbency of Thomas Chamberlyne. The advowson of Worplesdon came to Eton College with two other benefices in 1692-3, in exchange for Petworth, Sussex.

*Silver-gilt Paten.*—Weight, 5 oz. 9 dwt. Diam., 6 in. Height,  $1\frac{2}{5}$  in.

London hall-marks of 1572:—1. Leopard's head crowned in outline. 2. A cricket or grasshopper below

W C in a shaped stamp.<sup>1</sup> 3. Black-letter small p in a plain shield. 4. Lion passant in outline.

This, though now used as a paten, is really what remains of a tazza of Dutch design; all that is left of it is a rather deep bowl and flat foot, the original high stem having been cut away. At the junction with the foot there is an egg moulding, with traces of a band of reeds below it. There is a wavy line of zig-zags just under the edge inside the bowl, and a little lower down two faint dotted horizontal lines. The centre is worked up into a finely-designed helmeted bust in bold relief, on a chased dotted ground, the whole being surrounded by a closely-woven chaplet of laurel leaves. Beyond this again there is a band of arabesque ornament between fillets which cross, and divide it four times. Under the foot is this inscription, "Ex dono Johannis Clauering quondam Socii [i.e., of Eton College] 1612."

*Silver-gilt Paten.*—Weight, 4 oz. 11 dwt. Diam.,  $4\frac{3}{4}$  in. Height,  $1\frac{1}{2}$  in.  
Not hall-marked.

This paten may be old, but the engraved ornament on it is distinctly modern, having been added certainly within the last fifty years. This consists of a vernicle in the depressed centre; a band of foliage beyond it, being a poor copy of the arabesque band in the tazza paten; the same may be said of a faint wavy line of zig-zags round the verge. The stem swells out from the centre towards both ends, and rests on a flat disc. Nothing is known of the history of this paten; it may have come from Eton College with the rest of the plate; or it may be the sole representative of the Worplesdon Communion vessels in use previous to 1800, the year of the importation of the Eton plate, and have been used as the cover of a seventeenth century cup now lost.

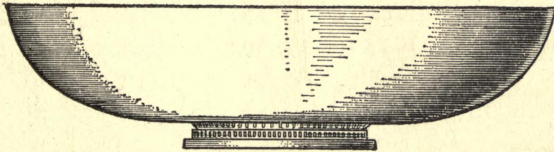
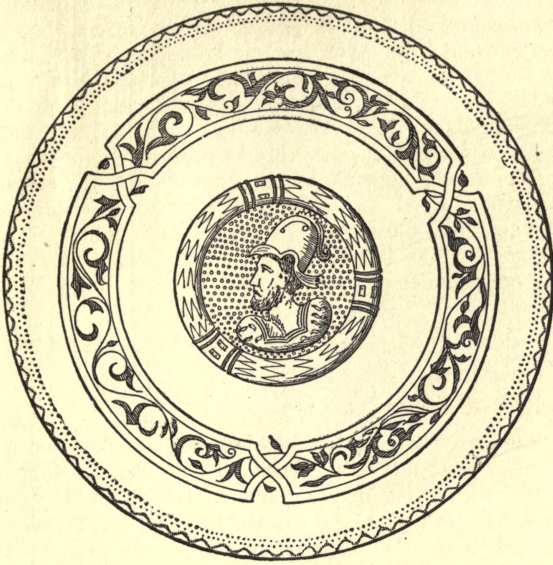
*Silver-gilt Flagon.*—Weight, 30 oz. 19 dwt. Height,  $11\frac{5}{8}$  in. Diam. of mouth, 3 in.; of base,  $4\frac{3}{8}$  in.

London hall-marks of 1598:—Leopard's head crowned in outline. 2. R S with some object below, in a plain shield. 3. Lombardic A in a plain shield. 4. Lion passant in outline.

This very handsome pear-shaped flagon is covered with a bold design of flat repoussé work on a rough ground. The purchase or thumb lever takes the form of a winged cherub's head; and on the face of the handle there is an engraved ornament of arabesque design. The short stem joining the body to the foot is divided by a flange turned slightly downwards. The vessel is also

---

<sup>1</sup> *Old English Plate*, p. 309.



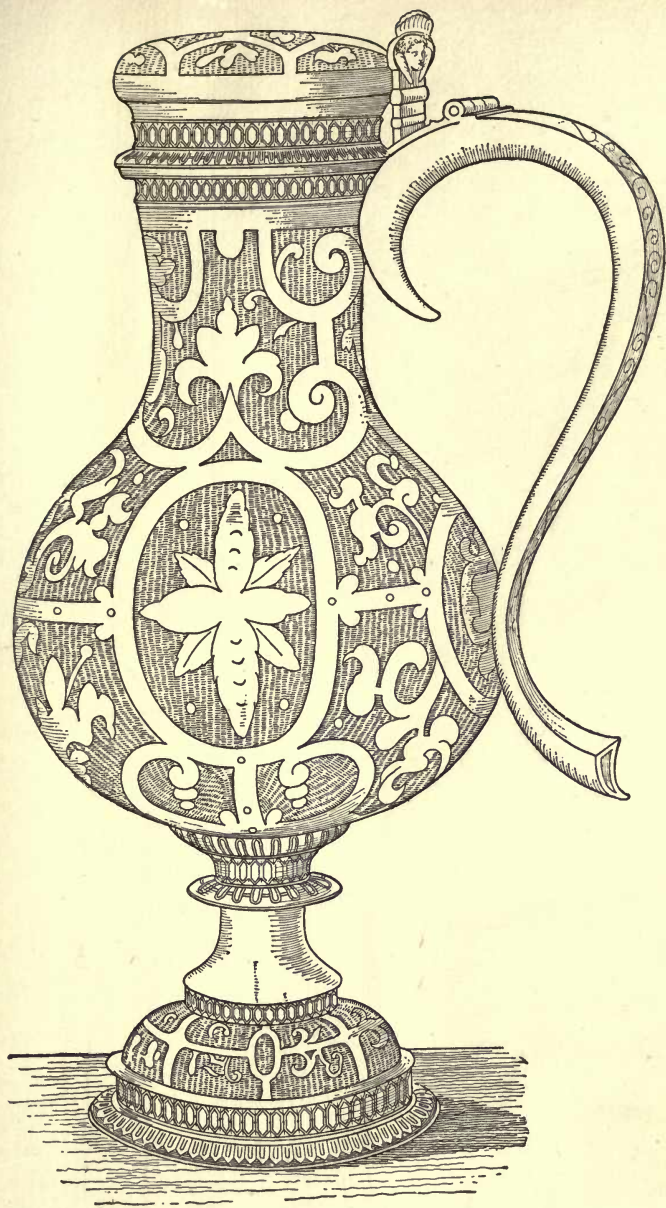
WORPLESDON.

Paten. 1872.

Half Size.

face 80.





WORPLESDON. 1598.

Half Size.



enriched with nine moulded bands of three varieties. One is of ovals which occurs round the lid and neck, above the flange, and twice on the foot; another on the edge of the lid and base, is a variety of the egg ornament; while the third, approaching more nearly the usual egg and tongue moulding, is found encircling the lower part of the body and on the flange. On the body in front are pricked these arms with inscription in a surrounding band formed by the repoussé ornamentation:—ar. on a bend dexter sa. three owls of the first, in chief a mullet gu. *for Savile*; impaling . . . a chevron or, betw. three escallop shells . . . *for Dacre*. “The gift of the Lady Margaret Savill.”

Flagons of this description, though not commonly found in churches, are well known, and instances of their occurrence have been from time to time noted. The author of *Old English Plate* mentions six or seven vessels of English make, and of similar shape and ornament, amongst the treasures of the Czar and of the Patriarch of Moscow, varying in date from 1596 to 1612. Other examples are found in the churches of Biddenden and Westwell in Kent, dating from the last decade of the sixteenth century.

The donor was daughter of George Dacre, of Chesham, Hunts., Esq., and married Sir Henry Savile, a man of considerable note in his day, to whom this flagon, no doubt, originally belonged, and in whose memory it was very probably given. He was a learned and accomplished man, and Queen Elizabeth read Greek and Mathematics with him. In 1596 he was chosen Provost of Eton, having previously been Warden of Merton College, Oxford, and was knighted by James I on his coronation day. Sir H. Savile was one of the translators of the Authorised Version of the Bible, and died at Eton in 1621.

### *Brass Alms Bason.*—

The gift of the Rev. W. A. Carter, rector from 1878 to 1885.

At S. Luke's, Burpham, in this parish, plated vessels are used.

### WYKE. S. MARK.

*Silver Cup.*—Weight,  $11\frac{1}{2}$  oz. Height,  $7\frac{6}{8}$  in. Diam. of bowl,  $4\frac{3}{8}$  in.; of foot,  $5\frac{1}{8}$  in. Depth of bowl,  $2\frac{1}{2}$  in.

*Silver Paten.*—Weight, 4 oz.  $6\frac{1}{2}$  dwt. Diam.,  $6\frac{5}{8}$  in.

*Silver jug-shaped Flagon.*—Weight,  $12\frac{3}{4}$  oz. Height,  $8\frac{3}{4}$  in.

On a band round the widest part is, “Gloria in Excelsis Deo. Alleluia.”

*Silver Alms Bason*.—Weight,  $8\frac{1}{5}$  oz. Diam.,  $9\frac{1}{2}$  in.  
 London hall-marks of 1846 on each piece. Maker,  
 I. J. Keith.

The sacred monogram is engraved on the paten and alms bason.

#### SURREY COUNTY SCHOOL CHAPEL, CRANLEIGH.

*Silver-gilt Cup*.—Weight, 15 oz. 9 dwt. Height, 8 in.

*Silver-gilt Cup*.—Weight,  $16\frac{2}{5}$  oz. Height, 8 in.

The bowl of the former cup is round, the stem hexagonal, and the foot sexfoil. There is an open-work knop in the middle of the stem. Six carbuncles are set in the bowl half-way down, and one face of the foot is enamelled light blue with the sacred monogram thereon. The other cup is of similar shape; the bowl, however, is not jewelled but has an ornament of foliage round the base. There are six bosses on the knop with as many sapphires, one in each boss. One face of the foot is enamelled red with the sacred monogram.

*Two silver-gilt Patens*, each weighing 5 oz. 9 dwt., and measuring  $6\frac{3}{4}$  in. across.

Round the rim of one is, "Behold the Lamb of God that taketh away the sins of the world; have mercy upon us"; and round that of the other, "Lord, evermore give us this Bread."

*Silver-gilt Paten*.—Weight, 4 oz. 11 dwt. Diam.,  $7\frac{1}{4}$  in.

*Ruby-glass jug-shaped Flagon*, and *Cruet* with silver-gilt mounts.

London hall-marks of 1868 on each of the above pieces. Maker, J. Keith.

The plate was presented by the Rev. E. Peek, brother of Sir H. W. Peek, Bart., who gave the school chapel.

*Brass Alms Bason*.—

This is shaped as a quatre-foil with a cross fleury across it.

There is an interesting pewter-gilt Altar cross here, with incised scroll work on the front and the sacred monogram in the centre, made from two flagons and two patens of pewter formerly in use at Sheepshed Church, Leicestershire. These were purchased by the Rev. Joseph Merriman, D.D., head master of the school, who had them made up into this form. On the reverse side is this inscription: "This cross was made in 1882 from a pewter Communion Service on

which was the following inscription : 'The Guift of y<sup>e</sup> Lady Phillipps of Garraden to y<sup>e</sup> Church of Shepshead Anno 1687.'"<sup>1</sup> The lettering of this latter inscription is a fac-simile of the original one on the pewter patens.

---

*Rural Deanery of Letherhead.*

---

ASHTEAD. S. GILES.

*Silver-gilt Cup.*—Weight, 20 oz. 1 dwt. Height, 10 in. Diam. of bowl,  $4\frac{1}{2}$  in.; of foot,  $6\frac{1}{2}$  in. Depth of bowl,  $3\frac{1}{2}$  in.

London hall-marks of 1847. Makers, C. T. and G. Fox.

The sacred monogram, the H pierced by a Latin cross, in a glory, is engraved on the conical bowl; and on the base is, "Parish of Ashtead, Surrey, from Rev<sup>d</sup> W. L. 1848."

*Silver-gilt Paten.*—Weight, 9 oz.  $6\frac{3}{4}$  dwt. Diam., 6 in. Height,  $1\frac{1}{2}$  in.

London hall-marks of 1710:—1. Britannia. 2. In a shaped stamp P Y under a rose, with a crown above it, the mark of Benjamin Pyne, S. Martin's-le-Grand.<sup>2</sup> 3. Court-hand P. 4. Lion's head erased.

This paten, which has a foot, was evidently gilded in 1847 to match the new pieces. On the salver is engraved the symbolic triangle in a glory, with "Jehovah" in Hebrew characters in the centre.

*Silver-gilt Flagon.*—Weight, 40 oz. Height, 12 in.

London hall-marks of 1889. Makers, Blunt and Wray.

This vessel is tankard-shaped, with lid surmounted by a cross. The sacred monogram is on the front of the drum; and on the base is, "To the glory of God and in memory of Edgar Giberne who died 21st Sept 1889."

---

<sup>1</sup> See *The Church Plate of Leicestershire*, Vol. I, p. 59.

<sup>2</sup> *Old English Plate*, p. 335.



*Two silver-gilt Alms Dishes.*—Each weighs 14 oz. 11 dwt., and measures  $10\frac{1}{8}$  in. in diameter.

London hall-marks of 1846. Makers, C. T. and G. Fox.

There is this inscription on each : “Ecclesiæ Parochiali de Ashtead in Com<sup>a</sup> Surr<sup>i</sup> Eleemosynarium hoc in laudem Dei O. M. dono in perpetuum dedit Gul. L. ejd. Par. Rector. An. S.N mdccecxvi. Qui pauper in se dives est, dives qui in alios locuples.”

The donor of these dishes and of the cup was the Rev. William Legge, who was instituted to the living in 1826.

#### BANSTEAD. ALL SAINTS.

*Silver-gilt Cup.*—Weight, 10 oz.  $18\frac{3}{4}$  dwt. Height, 7 in. Diam. of bowl,  $3\frac{1}{2}$  in. Depth of bowl, 4 in.

London hall-marks of 1788 :—1. Leopard's head crowned in a round shield. 2. DS above RS, the mark of D. Smith and R. Sharp, Westmorland Buildings.<sup>1</sup> 3. Roman small m. 4. Lion passant in oblong. 5. Head of George III.

The bowl is oval, with the sacred monogram in a glory engraved on one side ; the stem swells out below the small knop, which is placed rather high up, into a large square base with a plain raised edge.

*Silver-gilt Paten Cover.*—Weight, 13 oz. Diam.,  $6\frac{1}{2}$  in. Height, 2 in.

Hall-marked as above.

In the centre, which is deeply sunk, is the sacred monogram as on the cup.

*Silver-gilt Flagon.*—Weight, 52 oz. 17 dwt. Height, 11 in.

Hall-marked as above.

This flagon is helmet-shaped, with handle and lid, and raised on a short round stem which widens out into a large square base with raised edge. Of this shape are many cream jugs made in the latter part of last century after a design introduced by Wedgwood. This, with the cup and paten, is inscribed, “The Gift of Rich<sup>d</sup> Ladbroke Esq. to the Church of Banstead Surry Anno Domini 1789.”

The family of Ladbroke had property in Reigate called Frenches, and there are monuments to the memory of various members in the

---

<sup>1</sup> *Old English Plate*, p. 350.



church, including the donor of the above plate, who died unmarried in 1793. For a few years this family also owned Garratts Hall, in the parish of Banstead.

Some earlier plate was stolen between 1823 and 1832, during the incumbency of the Rev. William Buckle; namely, a silver flagon given in 1718 by Mrs. Sarah Buckle, widow of Christopher Buckle, Esq., of Burgh in this parish. She died in 1722 and was buried at Banstead. And also "a silver plate to collect the offerings" given in 1718 by Daniel Lambert, Esq., of Perrotts Manor, Banstead. Mr. Lambert succeeded to the Banstead estate, which is still in the family, in 1693, on the death of his elder brother Nicholas, and died in 1721.

### *Brass Alms Bason.*—

Given in 1887 by Mrs. Cuthbert Buckle.

The following extract is from the will of John Woodcraft, vicar of Banstead from 1462 to 1465, when he died:—

"I will that the Churche of Banstede have my chalice and my best surplice."

This chalice may be the one mentioned in the accounts of King Edward's Commissioners, weighing 14 oz.<sup>1</sup>

## GREAT BOOKHAM. S. NICHOLAS.

*Silver Cup.*—Weight,  $7\frac{1}{2}$  oz. Height, 6 in. Diam. of bowl, 4 in.; of foot,  $3\frac{7}{8}$  in. Depth of bowl,  $3\frac{3}{4}$  in.

*Silver Paten Cover.*—Weight,  $2\frac{9}{10}$  oz. Diam.,  $4\frac{1}{2}$  in. Height,  $1\frac{1}{8}$  in.

The only mark remaining on the cup is the maker's, which is also stamped on the cover, viz.: In a heart-shaped stamp R A, a rose between pellets below, a mark found in 1660.<sup>2</sup>

The bowl of this cup, which is a very nice one, is in shape an inverted truncated cone with a flat base, round the edge of which runs a light cable moulding. The stem, swelling out gradually, forms also the foot, the edge being flat, the stem and foot being of one piece of metal. The same moulding is repeated round the edge of the salver which is raised on a foot and forms the cover.

*Silver Cup.*—Weight, 13 oz.  $8\frac{5}{8}$  dwt. Height, 8 in.

London hall-marks of 1879. Makers, Messrs. Garrard and Co.

<sup>1</sup> See *Surrey Archaeological Collections*, IV, 172.

<sup>2</sup> *Old English Plate*, p. 324.

The bowl is oval and gilt-lined, and is set on a plain stem which widens below the knop into the foot. Here is an inscription, "To him who loved us and washed us from our sins in His own Blood"; and on the underside, "G<sup>t</sup> Bookham, 1879." It was given by the Rev. William Heberden, vicar of the parish from 1821 to 1879, when he died.

*Silver Flagon*.—Weight, 29 oz. 10 $\frac{2}{3}$  dwt. Height, 9 in. Diam. of mouth, 4 $\frac{3}{8}$  in.; of base, 6 in.

London hall-marks of 1673:—1. Leopard's head crowned in outline. 2. TC, a dolphin above, a fleur-de-lys below, in a shaped shield.<sup>1</sup> 3. Black-letter capital Q in a plain shield. 4. Lion passant in outline.

This is a handsome tankard-shaped flagon without a spout, the lid being flat at the top. Round the drum is, "This belongs to the Church of great Bookham"; this inscription being also engraved on the cup and paten of the same period.

*Silver Plate*.—Weight, 14 oz. 7 dwt. Diam., 10 in.

London hall-marks of 1675. 1 and 4, as above. 2. IH, a fleur-de-lys between pellets below, in a shaped shield.<sup>2</sup> 3. Black-letter capital S in a plain shield.

This is a shallow plate with mouldings round the edge of the rim, and was formerly used as an alms bason, but is so no longer. It is inscribed underneath, "This belongs to the Parish Church of great Bookham in Surrey, 1677."

*Brass Alms Bason*.—

On the rim is, "Be ready to give and glad to distribute." In the centre of the bowl there is an engraved design of vine leaves and grapes on a powdered ground. It was given in 1887 by the Rev. E. F. Baily, vicar of Effingham.

#### LITTLE BOOKHAM.

*Silver Cup*.—Weight, 7 oz. 3 dwt. Height, 7 $\frac{1}{2}$  in.

London hall-marks of 1829. Maker's mark, RH in an oblong stamp.

The bowl is plain and bell-shaped; the stem, divided by a small round knop, widens into the foot, on the edge of which is, "Little Bookham Parish, March, 1830."

<sup>1</sup> *Old English Plate*, p. 328.

<sup>2</sup> *Ibid*.

*Silver Cover.*—Weight,  $2\frac{1}{4}$  oz. Diam.,  $3\frac{5}{8}$  in. Height,  $1\frac{1}{4}$  in.

London hall-marks of 1569 :—1. Leopard's head crowned in outline. 2. A plain shield only; the mark is obliterated. 3. Black-letter small *m* in a plain shield. 4. Lion passant in outline.

This is now used as a cover to the above cup which it exactly fits. Originally it belonged, of course, to an Elizabethan cup which unfortunately is no longer in the parish. On the shoulder there is a band of foliage between fillets of zig-zags, which divide it four times. Its appearance has not been improved by the addition in modern times (probably when the new cup was provided) of the star ornament on the flat of the button, which is found engraved on all the silver pieces here.

*Silver Paten.*—Weight, 5 oz. 3 dwt. Diam., 5 in. by  $4\frac{3}{8}$  in. Height,  $1\frac{1}{4}$  in.

London hall-marks of 1823. Maker's mark, R P in a square stamp.

The length of the salver slightly exceeds the width, and the corners are rounded; the stem widens from the centre towards both ends, and the foot is round and flat. It bears this inscription under the upper part, "The Gift of the Rector, G. P. Boileau Pollen, 1836."

*Silver Flagon.*—Weight,  $25\frac{1}{5}$  oz. Height,  $9\frac{7}{8}$  in.

London hall-marks of 1837. Maker's mark, W E in an oblong stamp.

This is a graceful little vessel, shaped as a ewer, with a Latin cross on the lid, and this inscription round the raised edge of the base: "Presented to the Parish of Little Bookham by the Rev<sup>d</sup> G. P. Boileau Pollen, the Rector, 17<sup>th</sup> March, 1837."

*Two silver Plates.*—Each weighs  $13\frac{3}{5}$  oz., and measures 7 in. across.

London hall-marks of 1837. Maker's mark, M R over S in a heart.

The inscription on the flagon is repeated under the rim of both plates.

The Rev. George Pollen Boileau Pollen was instituted to the living in 1823, and died in 1848. He was descended in the female line from the family of Pollen, which became possessed of the manor of Little Bookham about 1710. He was also chaplain to Lord Northwick, and patron of the living.

*Brass Alms Bason.*—

On the rim is, "Freely ye have received, freely give," and in the centre of the bowl is the sacred monogram. It was presented by the present rector, the Rev. P. P. Edwards, in 1887, the year of his induction to the living.

*Two pewter Plates.*—Diam. of each,  $8\frac{1}{2}$  in.

There are these marks stamped underneath in each case :—1. In an oval, a dove with a twig in its beak, above a lamb, with "Thomas and Townsend . . . . .<sup>1</sup> Compton" in the margin. 2. A crowned rose, with "made in London" in the margin. 3. X crowned, with below "Superfine hard metal," in a scroll border. Both plates have, in the centre, a basket with handle, and buds and foliage issuing therefrom, in a wavy, irregular border, with a wavy ornament round the rim, formed by short indented strokes. The ornament on the rim is broken at both ends a little to the left of the top of the centre design, and the space so left is filled in with the script letters "L P B," linked. These probably stand for "Little Bookham Parish." The plates are in very good order, and the present rector has taken most praiseworthy steps for their careful preservation.

## COBHAM. S. ANDREW.

*Silver Cup.*—Weight,  $11\frac{1}{2}$  oz. Height,  $7\frac{1}{2}$  in.

London hall-marks of 1860. Makers' mark, DH above CH, in a quatre-foil stamp.

Round the bowl, which is gilt inside, is a band with these words, "Calicem Salutaris accipiam et Nomen Domini invocabo." The sex-foil foot has an engraved ornament of grapes and leaves on four of its compartments, and the sacred monogram on the other two, and is inscribed underneath, "For S<sup>t</sup> Andrew's Church Cobham Surrey. In memory of the Ven<sup>ble</sup> Henry Lloyd Loring D.D. Archdeacon of Calcutta." His nephew the Rev. E. H. Loring was vicar at the time.

*Silver Cup.*—Weight, 20 oz. Height, 8 in.

London hall-marks of 1856. Makers, C. T. and G. Fox.

On the oval gilt-lined bowl is the usual star ornament. The upper part of the stem is round, the lower part hexagonal, swelling into the foot which is six-sided. The knop is rather high up the stem and hexagonal, the faces being flat. The foot has been heavily weighted to make the vessel stand steady.

---

<sup>1</sup> Illegible.



*Silver Paten.*—Weight,  $18\frac{1}{5}$  oz. Diam.,  $8\frac{7}{8}$  in. Height,  $3\frac{3}{5}$  in.

London hall-marks of 1859. Makers' mark as on the cup of 1860.

In the centre of the sex-foil depression is the sacred monogram, and on the rim, "Agnus Dei qui tollis peccata mundi da nobis tuam pacem."

*Silver Paten.*—Weight, 16 oz. 8 dwt. Height, 3 in.

London hall-marks of 1846. Maker's mark, J C E in an oblong stamp.

The edge of the salver and foot is multifoil, as also is the depressed centre, which has a Latin cross in the middle. Under the salver is this inscription :—"For St Andrew's Church Cobham Surrey. From Hannah Adelaide Loring 1859," the first wife of the Rev. E. H. Loring.

*Silver Paten.*—Weight, 9 oz. 2 dwt. Diam.,  $8\frac{1}{8}$  in.

London hall-marks of 1861. Makers, E. and J. Barnard.

This paten, which is nearly flat, has the same legend on the rim and monogram in the centre as the paten of 1859.

*Silver Flagon.*—Weight, 34 oz.  $11\frac{3}{4}$  dwt. Height, 12 in.

London hall-marks of 1856. Maker's mark, G·I.

This is tankard-shaped, with the sacred monogram in a glory in front. A false bottom has been inserted halfway up the drum. Under the base is, "Cobham Church, Surrey, 1857."

*Brass Alms Bason.*—

On the rim is, "Lay not up for yourselves treasure upon the earth."

#### CUDDINGTON. S. MARY.

The Communion vessels here are electro-plated, and consist of a *Cup*, two *Patens* and a *Flagon*. There is also a *brass Alms Bason*, given by a member of the congregation, with the sacred monogram in the centre, and "It is more blessed to give than to receive" round the rim, with four pebble jewels at intervals.

## EFFINGHAM. S. LAWRENCE.

*Silver Cup*.—Weight,  $4\frac{3}{4}$  oz. Height,  $5\frac{3}{5}$  in. Diam. of bowl,  $3\frac{1}{4}$  in.; of foot,  $2\frac{7}{8}$  in. Depth of bowl,  $2\frac{9}{10}$  in.

*Silver Cover*.—Weight, 1 oz. 11 dwt. Diam.,  $3\frac{3}{10}$  in. Height,  $1\frac{1}{8}$  in.

London hall-marks of 1569 on cup and cover:—1. Leopard's head crowned in outline. 2. R D in a square stamp. 3. Black-letter small m. 4. Lion passant in outline.

The bowl of the cup is straight-sided in its lower part, and widens out above into a bell-shaped lip. A little above the centre there is a band of foliage between fillets of zig-zags which, crossing, divide it three times. The stem is cylindrical with mouldings round the centre. Above and below the stem is a horizontal band formed of small crosses, considerably worn. There is an ornamental moulding also round the edge of the foot.

On the round part of the cover there is a band similar to that round the bowl. The stem is cylindrical and terminates in a flat disc. On the face of this disc, within a narrow band of zig-zags, are pricked the date, 1570 and E, the initial letter of the parish to which it belongs. This cup and cover are now used at private Communion, and have within the last few months been very well and carefully repaired by Messrs. Lambert, of Coventry Street, through the kindness of a gentleman who takes great interest in the parish.

*Silver Cup*.—Weight, 10 oz.  $9\frac{3}{4}$  dwt. Height,  $7\frac{3}{8}$  in. Diam. of bowl,  $3\frac{3}{5}$  in. Depth of bowl,  $4\frac{1}{10}$  in.

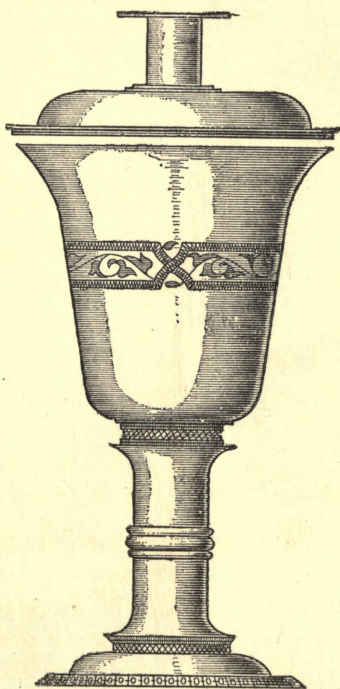
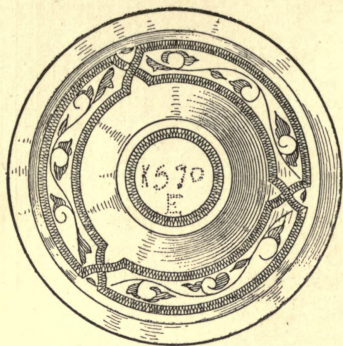
London hall-marks of 1828. Maker's mark, R S, script letters, in a shaped stamp.

The bowl is bell-shaped. The knob which divides the stem, and a flange higher up, are both chased, and the foot is multifoil.

*Silver Paten*.—Weight, 11 oz.  $6\frac{3}{4}$  dwt. Diam.,  $6\frac{1}{2}$  in. Hall-marks as on the above cup.

The salver and foot have a multifoil edge. It is inscribed, "This Paten with the Flagon and Chalice were presented by M<sup>rs</sup> Stringer of Effingham Hill to the parish Church of Effingham Surrey. Anno Domini 1829."

*Silver Flagon*.—Weight,  $29\frac{3}{5}$  oz. Height, 9 in. Hall-marked as above.



EFFINGHAM. 1569.

Half Size.



This is a jug-shaped vessel with chased handle and multifoil base. The usual star ornament is engraved on each of the pieces given by Mrs. Stringer.

*Silver-gilt Cup*.—Weight, 9 oz. 11 dwt. Height,  $6\frac{3}{5}$  in. London hall-marks of 1890. Makers, Messrs. Blunt and Wray.

*Silver-gilt Paten*.—Weight, 2 oz. 18 dwt. Diam., 6 in. London hall-marks of 1879. Maker's mark, W.I.S in a shaped stamp.

*Two glass Cruets*, with silver-gilt stoppers.

These silver-gilt vessels, though used in the Church, were a private gift to the present vicar, the Rev. E. F. Bayly. The cup is a very costly one, being set with a large number of jewels. The bowl is conical and without ornament; the stem hexagonal; and the foot sexfoil. The knop dividing the stem has six bosses set with rubies, pearls, and diamonds. On two faces of the lower portion of the stem are agates set in gold. At the top of each face of the foot are set, in high relief, a diamond with two pearls on each side. Two compartments of the foot have agates; two, pretty sprays of pearls; one has a rose formed of diamonds, all in chased gold settings. On the sixth face, which is the front one, is a cross of large diamonds embedded in pearls, with a ruby at each of the lower corners.

*Pewter Paten*.—Diam.,  $9\frac{1}{8}$  in.

Marks:—1. IC, a mullet above and below, in a shield, no doubt for John Cotton, whose name appears on one of the stamps. 2. Lion rampant in a shield. 3. Leopard's head crowned. 4. Perhaps an old English capital Q. Stamps:—1. LONDON over a crowned rose. 2. X crowned. 3. In a round stamp, an eagle displayed with a crescent or flower on each side, and a pigeon below; in the margin IOHN COTTON.

This paten has a sunk centre with very narrow rim; the stem is rather thick, and the foot rounded off to a flat edge.

*Pewter Flagon*.—Height,  $8\frac{3}{10}$  in.

Marks:—1. AI apparently, a trefoil above and below. 2. Lion passant, a pellet above and below. 3. Leopard's head between pellets; each mark being in a diamond-shaped stamp. Also one stamp which may be a Prince of Wales' feathers, with a pellet below. On the handle is roughly stamped G above LE.



This is a tankard-shaped vessel with a flat lid, the drum and base being all in one. The flagon and paten date, probably, from the early part of last century.

*Pewter Plate.*—Diam.,  $9\frac{5}{8}$  in.

Traces of four imitation hall-marks. Stamps:—1. X crowned. 2. An anchor with cable, above which is “hard,” the words on both sides obliterated, but no doubt originally “superfine hard metal.” 3. WM RYMOTT in an oblong stamp. 4. LONDON with . . . . ERG [or C] H . . . ., several letters obliterated. Also H above BI, roughly stamped.

These pewter vessels are no longer used.

#### EPSOM. S. MARTIN.

*Silver Cup.*—Weight,  $9\frac{1}{4}$  oz. Height,  $7\frac{1}{4}$  in. Diam. of bowl,  $3\frac{1}{4}$  in.; of foot,  $3\frac{1}{2}$  in. Depth of bowl,  $3\frac{7}{8}$  in.

London hall-marks of 1783:—1. Leopard’s head crowned in an oval shield. 2. WB in an oblong stamp, the mark of Walter Brind, Foster Lane.<sup>1</sup> 3. Roman small h. 4. Lion passant.

Inscribed, “Communion Cup. Epsom. John Croucher, Church Warden, 1784.” It bears also the usual star device.

*Plated Cup.*

*Silver Paten.*—Weight, 49 oz. Diam.,  $14\frac{1}{4}$  in.

London hall-marks of 1809. Maker’s initials, J C.

This is a very massive plain salver with threaded edge. Above a star ornament is, “Fear God” surmounted by a ribbon with “Laus Deo”; and below, “Honor the King.” Beneath this is the following inscription on a ribbon:—“This salver was presented to the Parish Church of Epsom in the County of Surrey on the 25 day of Oct. 1809, to commemorate the 50<sup>th</sup> anniversary of His most Gracious Majesty’s reign King George III. by George Blackman (of Durdans) Esq<sup>r</sup>.” On the reverse is “Lawrence Langlands, George White, Churchwardens, 1852–3.”

*Two silver Flacons.*—Weight of one, 41 oz.; of the other, 40 oz. Height of each,  $9\frac{1}{2}$  in. Diam. of mouth,  $4\frac{1}{4}$  in.; of base,  $6\frac{1}{4}$  in.

<sup>1</sup> *Gilda Aurifabrorum*, p. 188.

London hall-marks of 1702:—1. Britannia. 2. F A in an oblong stamp, corners clipped; the mark of John Fawdery, Foster Lane.<sup>1</sup> 3. Court-hand H. 4. Lion's head erased.

These are tankard-shaped vessels of the usual description. They are inscribed, "Dedicated to the service of God in y<sup>e</sup> Parish Church of Ebisham, Surrey." Also, under the base, "Lawrence Langlands, George White, Church Wardens, 1852-3."

*Silver Spoon.*—Weight,  $1\frac{1}{4}$  oz.

London hall-marks of the present reign.

The bowl is square, and handle twisted with the figure of S. Philip at the end.

#### EPSOM. CHRIST CHURCH.

*Silver Cup.*—Weight, 6 oz.  $16\frac{1}{2}$  dwt. Height, 8 in. Diam. of bowl and foot,  $3\frac{1}{4}$  in.

*Silver Paten.*—Weight, 8 oz. 17 dwt. Diam.,  $7\frac{1}{4}$  in. Height,  $2\frac{1}{4}$  in.

*Silver Paten.*—Weight, 7 oz.  $19\frac{1}{2}$  dwt. Diam.,  $7\frac{3}{8}$  in.

London hall-marks of 1843 on the cup, and of 1844 on the patens. Makers, C. T. and G. Fox.

The sacred monogram is engraved on the cup and on the patens.

*Silver Flagon.*—Weight, 15 oz. 14 dwt. Height,  $8\frac{1}{2}$  in. Hall-marks as on the above patens.

The monogram as on the patens is repeated.

*Two silver-gilt Cups.*—Each weighs  $12\frac{3}{4}$  oz., and stands  $8\frac{1}{8}$  in. high.

These are of the shape and style known as the Camden pattern. On a band round the bowl in each case is, "Calicem Salutis accipiam et Nomen Dei invocabo."

*Two silver-gilt Paten Covers.*—Each weighing  $7\frac{7}{10}$  oz., and measuring  $6\frac{7}{8}$  in. across.

On the rim of each is, "Hoc est Corpus Meum quod pro vobis datur."

*Silver-gilt Flagon.*—Weight, 30 oz.  $1\frac{3}{4}$  dwt. Height, 12 in.

On a band round the body is, "Pascha nostrum immolatus est Christus."

These silver-gilt pieces were stamped in London in 1876, and made by John Figg.

*Brass Alms Bason.*—

On the rim is, "All things come of Thee, and of Thine own do we give Thee."

#### EWELL. S. MARY.

*Two silver Cups.*—Each weighs 10 oz.  $18\frac{3}{4}$  dwt., and is  $9\frac{1}{8}$  in. in height.

London hall-marks of 1844. Makers' mark, CR above GS, in a quatre-foil stamp.

The bowl of each is gilt-lined and bell-shaped, and rests on a baluster stem. On the raised edge of the foot is, "Presented by the Rev<sup>d</sup> Sir George L. Glyn Bart. Vicar, to the Parish Church of Ewell, Surry, 1844." The bowl and upper part of the foot is divided into four faces by incised lines. There is an engraved ornament round the upper part and base of the bowl, and between them the usual star ornament.

Sir George Lewen Glyn was appointed to the living in 1831 and held it fifty years, when he resigned. He succeeded to the baronetcy and family estates on the death of his brother, Sir Lewen Powell Glyn, in 1840. Sir George was also chaplain to the Earl of Shaftesbury, and died in 1885.

*Silver Paten.*—Weight, 18 oz.  $4\frac{1}{2}$  dwt. Diam.,  $9\frac{2}{5}$  in. Height,  $3\frac{7}{8}$  in.

Hall-marks as above.

There is the same kind of ornament as that on the cup round the rim and foot, and the star ornament in the sunk centre. Under the rim is, "Presented by John Lewis, Esq<sup>re</sup> to the Parish Church of Ewell, Surry. A.D. 1844."

The donor was an old resident, and died in 1857.

*Two silver Patens.*—Each weighs  $8\frac{1}{5}$  oz., measures across  $6\frac{1}{2}$  in., and stands  $3\frac{1}{5}$  in. high.

The same hall-marks.

These patens are exactly like the one above but smaller. One is inscribed, "Presented by Lady Glyn, wife of the Rev<sup>d</sup> Sir George L. Glyn, to the Parish Church of Ewell, Surry. A.D. 1844." The other,

"Presented by William Lempriere Esq<sup>re</sup> Capt<sup>n</sup> in the Royal Artillery, to the Parish Church of Ewell, Surry. A.D. 1844."

This gentleman lived at Ewell for many years and died in 1858."

*Two silver Plates.*—Each weighs  $8\frac{1}{2}$  oz., and measures  $7\frac{1}{2}$  in. in diameter.

Hall-marked as above.

They are similarly ornamented to the patens, and inscribed, "Presented by Thomas Stowers Esq<sup>re</sup> to the Parish Church of Ewell, Surry. A.D. 1844."

*Plated Plate.*

*Silver Flagon.*—Weight, 42 oz.  $16\frac{3}{4}$  dwt. Height,  $13\frac{1}{4}$  oz.

Hall-marks as above.

This is a tankard-shaped vessel with a good deal of engraved ornament about it, similar to that on the other pieces. Like the cups, the cover and drum are divided into four faces by incised lines. In front of the drum is the sacred monogram in a glory, the H pierced by a Latin cross. Round the raised edge of the foot is this inscription: "Presented by Sir John Rae Reid, Bar<sup>t</sup>., M.P., to the Parish Church of Ewell, Surry. A.D. 1845."

The donor was of The Grove, Ewell, and was at this time M.P. for Dover, and Governor of the Bank of England. He married a sister of Capt<sup>n</sup> Lempriere, and died in 1867.

*Silver Spoon-strainer.*—Weight,  $18\frac{1}{2}$  dwt. Length,  $5\frac{1}{4}$  in.

London hall-marks of 1844. Makers, C. T. and G. Fox.

The bowl is silver-gilt, and the handle pointed. It is inscribed, "Presented by Mr<sup>s</sup> Higgins to the Parish Church of Ewell, Surry. A.D. 1844."

*Silver Alms Bason.*—Weight, 11 oz.  $16\frac{3}{4}$  dwt. Diam., 10 in.

London hall-marks of 1764 :—1. Leopard's head crowned in a round shield. 2. In a double-lined circle T·W; C above, W below; the mark of Thomas Whipham and Charles Wright, Ave Mary Lane.<sup>1</sup> 3. Black letter capital H. 4. Lion passant.

<sup>1</sup> *Old English Plate*, p. 346.



This bason alone remains of the old plate once used in the parish church; the rest disappeared with the ancient church in 1844, when the modern pieces were given. These it has been made to match as much as possible by the addition of the engraved ornament round the rim, and the star ornament in the centre of the bowl which is slightly raised. On the under-side is, "Ewell in Surry. Communion plate, 1765."

#### FETCHAM.

*Silver Cup*.—Weight, 18 oz.  $4\frac{1}{2}$  dwt. Height, 8 in. Diam. of bowl and of foot,  $4\frac{3}{4}$  in. Depth of bowl,  $3\frac{7}{8}$  in.

London hall-marks of 1636:—1. Leopard's head crowned in outline. 2. G M, a bird below, in a double-lined heart-shaped stamp, the inner line being dotted. 3. Italic small *t*, in a plain shield. 4. Lion passant in outline.

*Silver Paten Cover*.—Weight, 7 oz.  $5\frac{3}{4}$  dwt. Diam.,  $6\frac{7}{8}$  in. Height,  $1\frac{1}{4}$  in.

Hall-marks as above.

The bowl of the cup, which is very strongly made, is in shape an inverted truncated cone with slight lip and flat base. High up, the stem is divided by a plain round moulding, from whence it gradually widens into the foot. The cover has a flat rim and slightly sunk centre, and a flat foot attached to the upper part by a stem swelling from the centre towards both ends. In one place, where the sunk centre joins the rim, the metal is worn through.

#### *Plated Flagon*.—

This is a tankard-shaped vessel with a large spout, and may date from the beginning of the present century. There is a shell ornament where the upper end of the handle joins the drum. At some time this flagon has been found too large for the requirements of the parish, and has consequently had a false bottom inserted a little below the centre of the drum, the base also being filled in.

*Two pewter Plates*.—Diam. of each,  $9\frac{7}{8}$  in.

Marks on one:—1. A rose in a plain shield. 2. Lion passant in an oblong stamp, with an inner indented line. 3. Leopard's head crowned. 4. Roman small *i*. Stamps:—1. In a shield, a squirrel; above is the name JAMES; and over this the word ANCHOR, apparently; on each side of the shield is a palm branch. 2. A crowned

rose. 3. X.; also the letter F. The marks are the same on the other plate, except that there are only two imitation hall-marks, the rose and the lion; and the letter P in place of the F on the other.

Although carefully preserved none of the above pieces are now used, new Communion plate having been given in 1864, as follows:—

*Silver Cup*.—Weight, 10 oz.  $18\frac{3}{4}$  dwt. Height,  $8\frac{7}{8}$  in. London hall-marks of 1863. Maker, Arthur Sibley.

This cup has a baluster stem supporting a round bowl.

*Silver Paten*.—Weight, 6 oz.  $7\frac{1}{2}$  dwt. Diam., 6 in. Height,  $2\frac{1}{8}$  in.

Hall-marks as above.

*Silver Flagon*.—Weight, 19 oz.  $2\frac{3}{4}$  dwt. Height, 9 in. Hall-marks as above.

This is a tankard-shaped vessel with a Latin cross on the lid. The usual star ornament is engraved on these modern vessels, which were given by the Hon. Mrs. Hankey, of Fetcham Park.

There is an interesting *Bason* of *pewter* preserved here which came from the old font. It has these marks on the rim:—1. Lion passant. 2. Leopard's head crowned. 3. A rose; and another illegible. Also JOHN 1685 KIDWELL; and FETCHAM 1685 FANT. It will be noticed that the imitation hall-marks on this font bason are, so far as they are decipherable, identical with those on the pewter plates, which may therefore be of the same date.

#### HATCHFORD. CHAPEL OF S. MATTHEW.

*Cup*.—Weight, 23 oz. 14 dwt. Height,  $9\frac{7}{8}$  in.

Marks:—1. Head of Minerva, with the letter T above. 2. A cross and anchor crossed between PP; a heart above, R below.

*Paten*.—Diam.,  $5\frac{7}{8}$  in.

Marks as above.

This cup and paten are of French manufacture, and not earlier than 1838. In that year new punches were ordered for gold and silver, as it was found that the State punches had in a great degree been counterfeited. If these pieces are silver-gilt, they are very much below standard. The cup has a good deal of enamelling about it, which accounts for its unusual weight. Three of the enamels on the sex-foil foot represent the Crucifixion, the Last Supper, and the doubt of S. Thomas, with, in each case, a Latin legend on either side, having reference to the subject represented.

*Silver Paten.*—Weight, 9 oz. 2 dwt. Diam., 7 in.

London hall-marks of 1791 :—1. Leopard's head crowned. 2. In a quatre-foil stamp J·A above, probably J·A; the first letter is indistinct. 3. Roman small q. 4. Lion passant. 5. Head of George III.

The sacred monogram is engraved in the centre of this paten, which is nearly flat.

*Plated Cup and Paten*, used at private Communion.

#### HEDLEY. S. MARY.

*Silver Cup.*—Weight, 7 oz. 1 dwt. Height,  $6\frac{5}{8}$  in. Diam. of bowl,  $3\frac{1}{8}$  in.; of foot,  $3\frac{5}{8}$  in. Depth of bowl,  $3\frac{1}{8}$  in.

London hall-marks of 1752 :—1. Leopard's head crowned in a plain pointed shield. 2. W·C in a wavy oblong stamp, the mark of William Cripps, "att ye Crown and Golden Ball," Compton St.<sup>1</sup> 3. Roman small r. 4. Lion passant.

*Silver Paten Cover.*—Weight,  $2\frac{1}{5}$  oz. Diam.,  $3\frac{5}{8}$  in. Height,  $1\frac{1}{8}$  in.

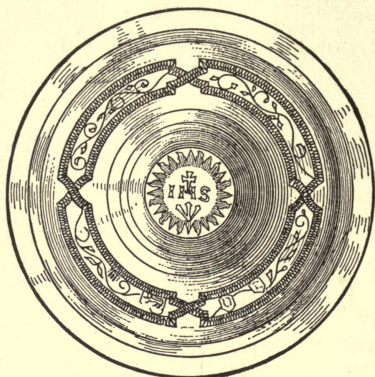
Not hall-marked.

The cup has a straight-sided bowl rounded off below, a round stem divided high up by a small knop, and a spreading foot. The centre of the cover is rather deeply sunk, and the stem thick. The usual star ornament is on both cup and cover.

*Silver Paten.*—Weight,  $7\frac{1}{2}$  oz. Diam.,  $6\frac{1}{8}$  in. Height,  $1\frac{3}{4}$  in.

<sup>1</sup> *Old English Plate*, p. 345.



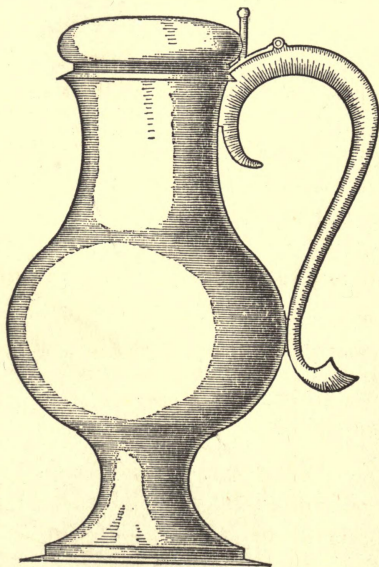


LITTLE BOOKHAM.

Paten Cover, 1369.

Half Size.

(See page 87.)



EAST HORSLEY.

1649.

One Quarter Size.

face 99.



London hall-marks of 1706 :—1. Britannia. 2. Probably Vn in a circular stamp, for some name beginning with Un.<sup>1</sup> 3. Court-hand L. 4. Lion's head erased.

The centre of this paten is a shallow depression bearing the sacred monogram, the H pierced by a cross, in a rayed star, with this round it, "Patina Deo sacra in usum ecclesiæ de Headly in com. Sur."

*Silver Flagon*.—Weight, 14 oz. 7 dwt. Height,  $8\frac{1}{2}$  in.

London hall-marks of 1854. Makers, C. T. and G. Fox.

This flagon is tankard-shaped, and is inscribed under the base, "Ex dono Mariæ, uxoris quondam Fulk Greville Howard. Eheu ! nunc illi superstitis. Anno Salutis nostræ 1855."

This was Mary, only daughter of Richard Bagot, Esq., who assumed the name of Howard, and held Ashted Park in right of his wife, who was Frances Howard, sister of Henry, 12th Earl of Suffolk and 5th Earl of Berkshire. The donor married the Hon. Col. Fulke Greville Upton (who afterwards took the name of Howard), in whose memory this flagon appears to have been given, and who was lord of the manor of Hedley and patron of the benefice.

#### EAST HORSLEY. S. MARTIN.

*Silver-gilt Cup*.—Weight, 10 oz. Height,  $6\frac{1}{2}$  in. Diam. of bowl,  $4\frac{3}{10}$  in. ; of foot,  $4\frac{1}{8}$  in. Depth of bowl,  $3\frac{1}{10}$  in.

London hall-marks of 1640 :—1. Leopard's head crowned in outline. 2. Badly stamped ; T I, with perhaps some object below. 3. Court-hand C. 4. Lion passant in outline.

The bowl is in shape a truncated cone, and has a flat base. The stem widens out gradually into the foot, the edge of which is flat with some slightly impressed mouldings round it. A plain flat flange divides the stem near the top.

*Silver-gilt Cup*. Weight, 10 oz. Height,  $6\frac{2}{3}$  in. Diam. of bowl, 4 in. ; of foot,  $4\frac{1}{10}$  in. Depth of bowl,  $3\frac{3}{10}$  in.

London hall-marks of 1649 :—1 and 4, as above. 2. I H, linked letters, in a plain shield.<sup>2</sup> 3. Court-hand M.

<sup>1</sup> *Old English Plate*, 4th Ed., p. 395.

<sup>2</sup> *Ibid.*, p. 322.

This is very like the other cup ; the flange, however, on the stem is in this case convex. It is inscribed under the foot in pricked lettering, "East horseley in Surry."

*Silver-gilt Paten.*—Weight, 5 oz. 9 dwt. Diam., 6 in. Height, 1 in.

London hall-marks of 1640. The maker's mark is nearly obliterated ; it appears to be a monogram in an oblong stamp with clipped corners.

The centre is sunk below the rim which curves slightly upwards, and has a line engraved round it. The stem widens from the centre above and below, and rests on a flat disc.

*Silver-gilt Paten.*—Weight, 6 oz. 16 dwt. Diam.,  $5\frac{1}{2}$  in. Height,  $1\frac{1}{10}$  in.

London hall-marks of 1649, as on the cup of that date.

This is very similar in shape to the earlier paten, the only difference being that the rim is flat.

*Two silver-gilt Flagons.*—Weight of one, 42 oz.  $16\frac{3}{4}$  dwt. ; of the other, 41 oz. Dimensions in each case : Height,  $11\frac{3}{5}$  in. Diam. of mouth,  $3\frac{2}{5}$  in. ; of base,  $5\frac{1}{4}$  in.

London hall-marks of 1649, as on the later cup and paten.

These are handsome pear-shaped vessels. Of this shape were the Communion flagons introduced in the latter part of the reign of Queen Elizabeth ; such, however, were seldom made so late as 1649, the ordinary tankards having superseded them. Under the base of both flagons is pricked "East Horseley." It is difficult to understand why, in such a small parish, it was thought necessary to provide a second cup and paten in 1649, and a pair of large flagons, where one would have been amply sufficient. All the plate has an interest, apart from its intrinsic worth, owing to the time it was made. It will be noticed that one cup and paten were stamped in a year full of social troubles—the year of the battle of Edgehill ; and that the rest of the plate was made in a still more eventful year, that of the execution of the King, and the first of the Commonwealth.

#### WEST HORSLEY. S. MARY.

*Silver Cup.*—Weight, 9 oz. Height, 8 in. Diam. of bowl, 4 in. ; of foot,  $3\frac{7}{8}$  in. Depth of bowl,  $4\frac{1}{2}$  in.

London hall-marks of 1634 :—1. Leopard's head crowned in outline. 2. F·I, a star of six points below, in a plain shield. 3. Italic small *r* in a plain shield. 4. Lion passant in outline.

This cup has a deep, straight-sided bowl, rounded off below and swelling out at the lip. The stem is divided by a plain, round knop, from which it widens out above and below. Under the foot, which is of the usual form, is "West Horsley in Surrey, 1634."

*Silver Paten Cover*.—Weight, 6 oz. Diam.,  $5\frac{3}{4}$  in. Height,  $1\frac{1}{2}$  in. Diam. of foot,  $2\frac{1}{8}$  in.

Hall-marks as above.

The rim is flat, the centre slightly sunk, the stem cylindrical, and the foot a flat disc. On the face of this disc is engraved in a plain band the sacred monogram.

*Silver Paten*.—Weight, 13 oz. 13 dwt. Diam.,  $8\frac{1}{4}$  in. Height, 2 in.

London hall-marks of 1666 :—1. Leopard's head crowned in outline. 2. R·S, a mullet above and below.<sup>1</sup> 3. Black letter capital **ƒ**. 4. Lion passant in outline.

The salver has a narrow rim and rests on a trumpet-shaped stem which spreads into the foot. Round the stem and foot are engraved horizontal lines in pairs, at intervals. It is inscribed, "In usum Ectiæ Parochis de West Horsley in Comitāt Surry Edwardus Nicholas, Miles Ser<sup>mo</sup> Regi Car<sup>o</sup> 2<sup>o</sup> a Secretioribus Consilijs me D.D. A<sup>o</sup> Di<sup>i</sup> 1667."

*Silver Flagon*.—Weight, 57 oz.  $8\frac{1}{2}$  dwt. Height,  $10\frac{1}{2}$  in. Diam. of mouth, 5 in.; of base,  $7\frac{5}{8}$  in.

Hall-marks of 1666, as above.

This is a handsome, massive tankard-shaped vessel with a flat cover, and fine spreading base, under which is the same inscription as on the paten.

In the church are several monuments to members of the Nicholas family. On one is an account of the donor of the plate which bears his name. Under a long Latin eulogistic inscription is the following: "Here lies y<sup>e</sup> Right Hon<sup>le</sup> Sir Edward Nicholas, K<sup>nt</sup> (eldest son of John Nicholas of Winterborne Earles in y<sup>e</sup> County of Wilts Esq.) Principal Secretary of State to King Charles y<sup>e</sup> 1<sup>st</sup> and King Charles y<sup>e</sup> 2<sup>d</sup> from the yeare 1641 to 1663, and a Privy Counsellor till his death to King Charles the 2<sup>d</sup>." On a black marble, over the grave below, is: "In spem lætæ resurrectionis hîc depositi sunt cineres Edwardi Nicholas, Mil. obiit Cal. Sept. an<sup>o</sup> D<sup>ni</sup> 1669, ætatis 77."

<sup>1</sup> *Old English Plate*, p. 322.

Sir Edward Nicholas purchased the manor of West Horsley from Mr. Raleigh, son of the ill-fated Sir Walter, in 1665. The estate descended to his grandson William, who in 1749 left it by will to Henry Weston, Esq., ancestor of the present owner.

#### LEATHERHEAD. SS. MARY AND NICHOLAS.

*Silver Cup*.—Weight,  $24\frac{3}{5}$  oz. Height, 10 in. Diam. of bowl and foot,  $5\frac{1}{4}$  in. Depth of bowl, 5 in.

London hall-marks of 1661:—1. Leopard's head crowned in outline. 2. F·L, a bird below in a shaped stamp.<sup>1</sup> 3. Black-letter capital **D** in a plain shield. 4. Lion passant in outline.

This is a very massive cup with a broad, deep gilt-lined bowl resting on a baluster stem. Round the upper part of the bowl is, in Greek, "The new Testament in My Blood"; and lower down a broad band of scroll and shell ornament repoussé on a reticulated ground. There is a narrower band of similar ornament on the foot, which also bears this inscription: "Humillime offerebat Jacobus Dallaway, Minister, MDCCCXVIII." This cup evidently was not originally intended for its present use.

*Silver-gilt Paten*.—Weight,  $18\frac{1}{5}$  oz. Diam.,  $9\frac{5}{8}$  in.

London hall-marks of 1792:—1. Leopard's head crowned in a round shield. 2. I·S in a shaped stamp, the mark of John Scofield, Bell Yard.<sup>2</sup> 3. Roman small r. 4. Lion passant. 5. Head of George III.

This is a handsome paten without a foot, with the sacred monogram in the centre. Round the edge of the rim is a beautifully designed border of chased foliation.

There is this inscription, "Communicantrum Eccles. de Letherhead, Ministro Jac. Dallaway. 1818."

The Rev. James Dallaway who gave the cup, and whose name is on the paten, was appointed to the living in 1804. He was an author of considerable repute, his best-known work being the *History of Western Sussex*. He died in 1834 at the age of 71, and was buried in Letherhead churchyard.

*Two silver Cups*.—Weight of one, 12 oz. 1 dwt.; of the other,  $12\frac{3}{4}$  oz. Height,  $7\frac{3}{4}$  in.

London hall-marks of 1871 on one, of 1872 on the other, and maker's initials SS on both.

<sup>1</sup> *Old English Plate*, 4th Ed., p. 392.

<sup>2</sup> *Old English Plate*, p. 350.



*Silver Cover.*—Weight, 3 oz. 17 dwt. Diam., 6 in. Hall-marks of 1871.

*Plated Cover.*

The cups form a pair. The bowl in each case is conical, the hexagonal stem is divided by pierced knop carrying six bosses, and the foot sex-foil with the sacred monogram on one face. They were bought with the silver cover (since remodelled), in 1874. The plated cover was given in 1881.

*Silver Paten Cover.*—Weight, 6 oz. 3 dwt. Diam., 6 in. London hall-marks of 1890. Makers, Goldsmiths' Alliance, Cornhill.

This was provided in place of the silver cover purchased in 1874. Inscribed underneath, "SS. Mary and Nicholas, Letherhead, 1891."

*Silver Paten Cover.*—Weight, 5 oz. 18½ dwt. Diam., 6 in.

London hall-marks of 1891. Makers as above.

Inscribed underneath, "SS. Mary and Nicholas Letherhead d.d. Frank Ernest Utterton, Vicar, 1891." The sacred monogram is engraved in the centre of each of these covers.

*Two plated Patens.*

*Silver Flagon.*—Weight, 39 oz. 13 dwt. Height, 11¼ in. Diam. of mouth, 4¾ in.; of base, 6⅞ in.

London hall-marks of 1704:—1. Britannia. 2. T<sub>I</sub>, a mullet above and below in a plain shield; the mark of Robert Timbrell, Sherborne Lane.<sup>1</sup> 3. Court-hand I. 4. Lion's head erased.

This is a very fine tankard-shaped flagon without spout. The top of the lid is flat. The sacred monogram is engraved on the drum.

*Brass Alms Bason.*—

Presented in 1877 by the R<sup>t</sup> Rev. J. S. Utterton, 1st Bishop of Guildford.

*Two pewter Plates.*—Each measures 9¾ in. across.

Stamps:—1. An animal courant in a border of shell-pattern. 2. X. 3. A crowned rose with "London"

<sup>1</sup> *Old English Plate*, p. 334.

below; also, a black-letter capital **M**; a lion; and another mark indistinct. Inscribed, "Leatherhead in Surrey, 1711." These plates are no longer used.

#### LEATHERHEAD. ALL SAINTS.

*Two frosted-silver Cups.* — Weight of each, 10 oz. Height,  $6\frac{5}{8}$  in.

London hall-marks of 1887. Makers, J. and H. Savory.

Each cup has a shallow round bowl, hexagonal stem, divided by a chased knop with four bosses, and a mullet foot.

*Two frosted-silver Patens.* — Each weighs  $3\frac{3}{5}$  oz., and measures in diameter,  $5\frac{1}{2}$  in.

Made by Messrs. J. and H. Savory in 1884.

*Frosted-silver Credence Paten.* — Weight, 10 oz. Diam., 7 in. Height, 2 in.

Hall-marks as on the other patens.

In the centre, which is a sex-foil depression, is the sacred monogram. It was presented by the Rev. F. P. Phillips, Rural Dean of Letherhead, and at that time rector of Stoke d'Abernon.

*Frosted-silver Flagon.* — Weight,  $24\frac{3}{5}$  oz. Height, 12 in. London hall-marks of 1883. Makers, J. A. H. and E. Savory.

This is a jug-shaped vessel with mullet foot. On the lid is a cross paté. It is inscribed, "In Dei Gloriam, All Saints, Letherhead. D.D. Joan Barbara Feiling, A.D. mdccclxxxix."

The donor was Mrs. Feiling of Elms House, Letherhead, who, with the exception of the credence paten, gave all the silver plate.

*Brass Alms Bason.* —

The gift of the Misses Pavitt, of Flint House, Letherhead.

#### STOKE D'ABERNON. S. MARY.

*Cup with Cover, two Patens, a Flagon, and an Alms Bason,* all electro-plated. The original vessels are said to have been stolen.

## WALTON-ON-THE-HILL. S. PETER.

*Silver Cup.*—Weight,  $7\frac{1}{2}$  oz. Height,  $5\frac{3}{4}$  in. Diam. of bowl,  $3\frac{1}{2}$  in. ; of foot,  $2\frac{7}{8}$  in. Depth of bowl,  $3\frac{3}{4}$  in.

London hall-marks of 1568 :—1. Leopard's head crowned in outline. 2. A Bull's head erased ; no shield.<sup>1</sup> 3. Black-letter small l. 4. Lion passant in outline.

The bowl of this cup is an inverted truncated cone, rounded off below into a flat base. There is a band of foliage between plain fillets without divisions round the top of the bowl, and a little below this a horizontal moulding worked up to a point. The stem swells out into vertical ends, the edges of which are ribbed. The foot is rounded off in the usual way, with an egg and tongue moulding on the edge.

*Two plated Salvers*, each raised on three feet.

*Copper-plated Flagon.*—

This is a rather broad jug-shaped vessel. There is a bold gadroon moulding round the edge of the lid and foot, and a horizontal ribbed band on the body. Stamped on it is this mark, **MORTON & Co.**, followed by a cock, in a long stamp with one end squared. It may be 90 or 100 years old.

<sup>1</sup> Cf. *Old English Plate*, 4th Ed., p. 389.