

# **Rake Manor, Godalming, Surrey**

ALAN BOTT

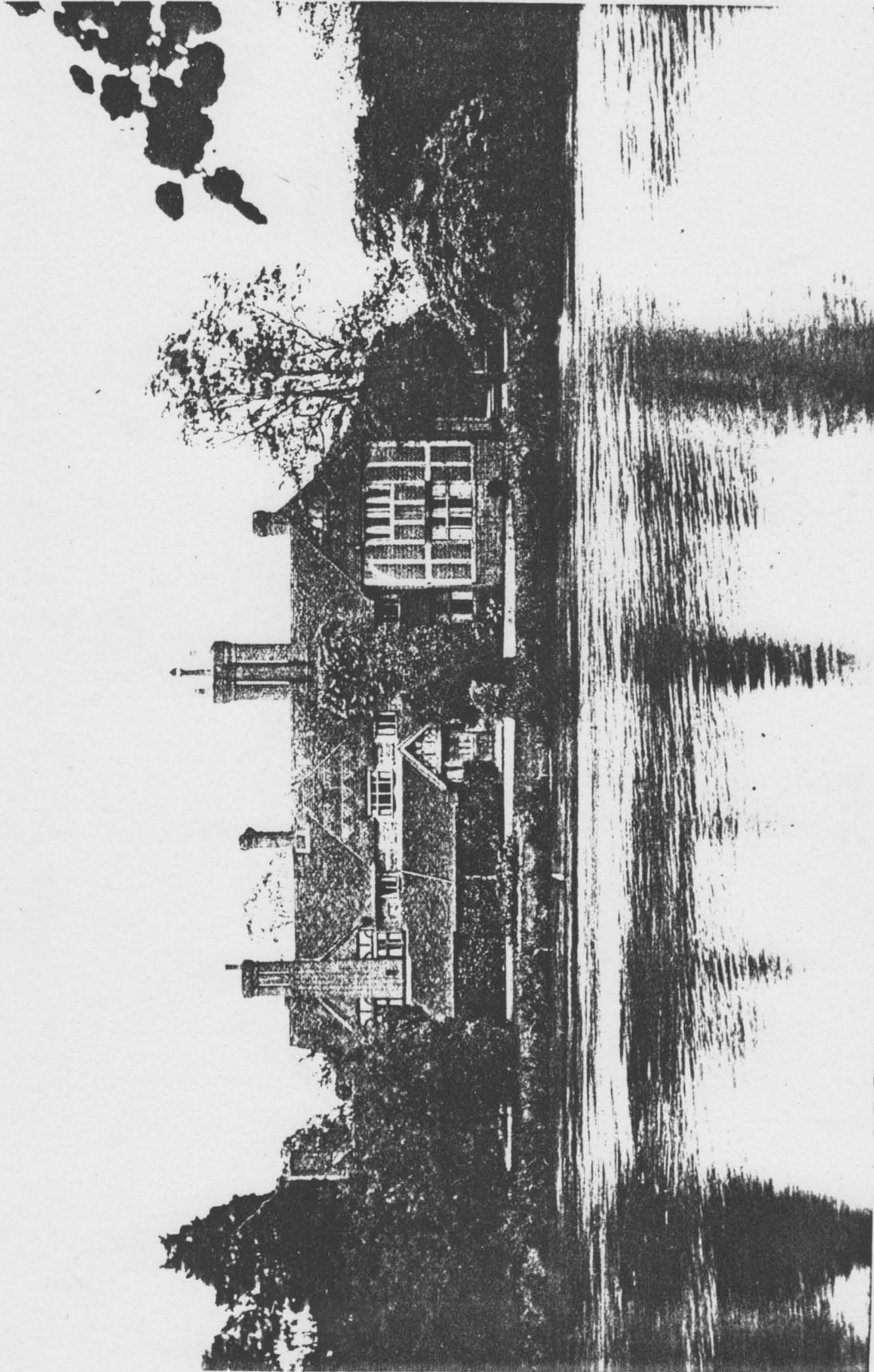


Fig 4a. Rake from the west in 1908, showing Nevill's addition on the north side and Baillie Scott's drawing room on the south side

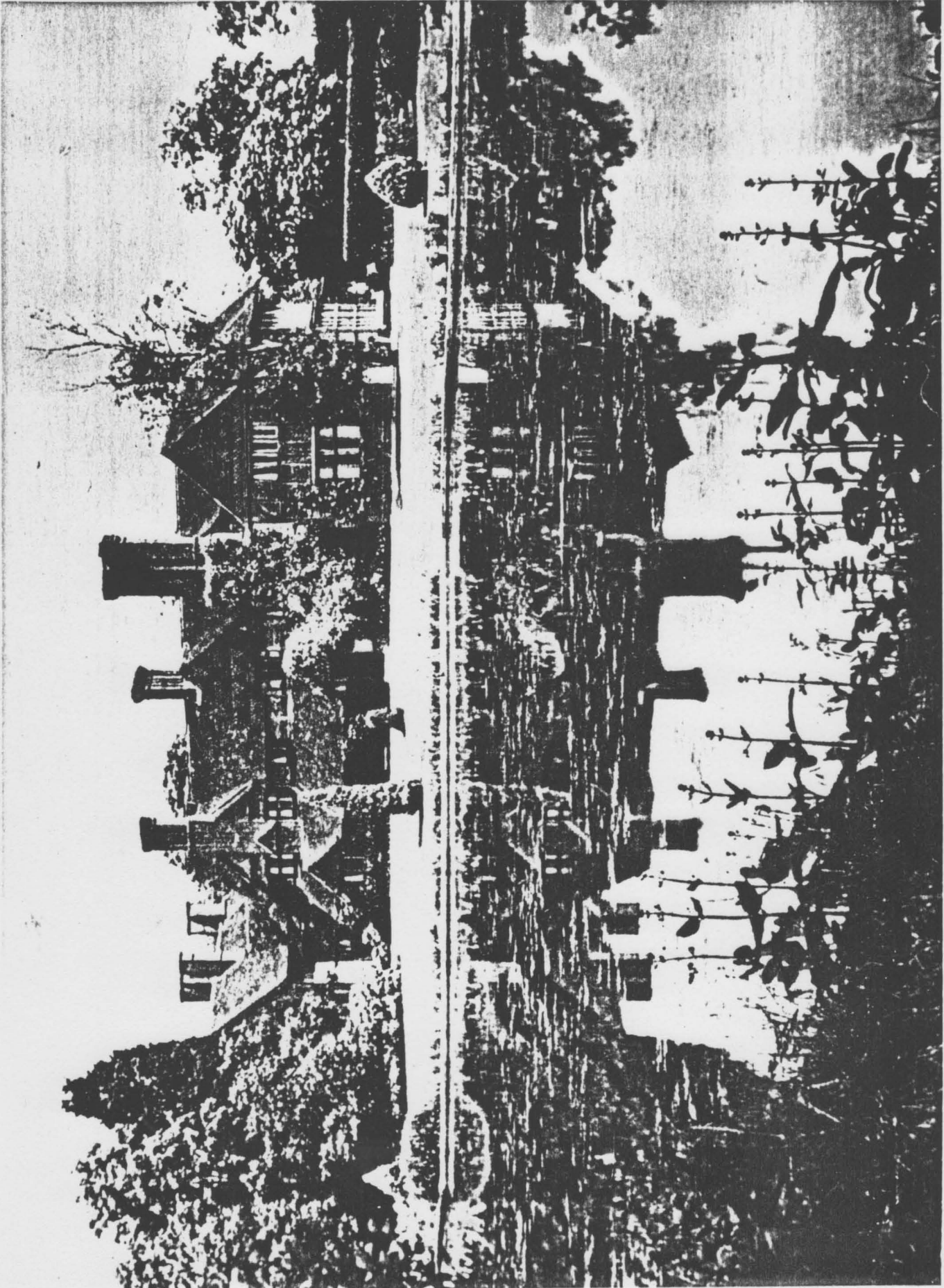


Fig 4b. Rake from the west in 1914, showing Baillie Scott's alterations to the lean-to and Nevill's gable; to the north are Lutyens's additions



Fig 4c. Rake from the west in 1970, showing Cary's extension to Nevill's gable after the removal of the lean-to in 1936

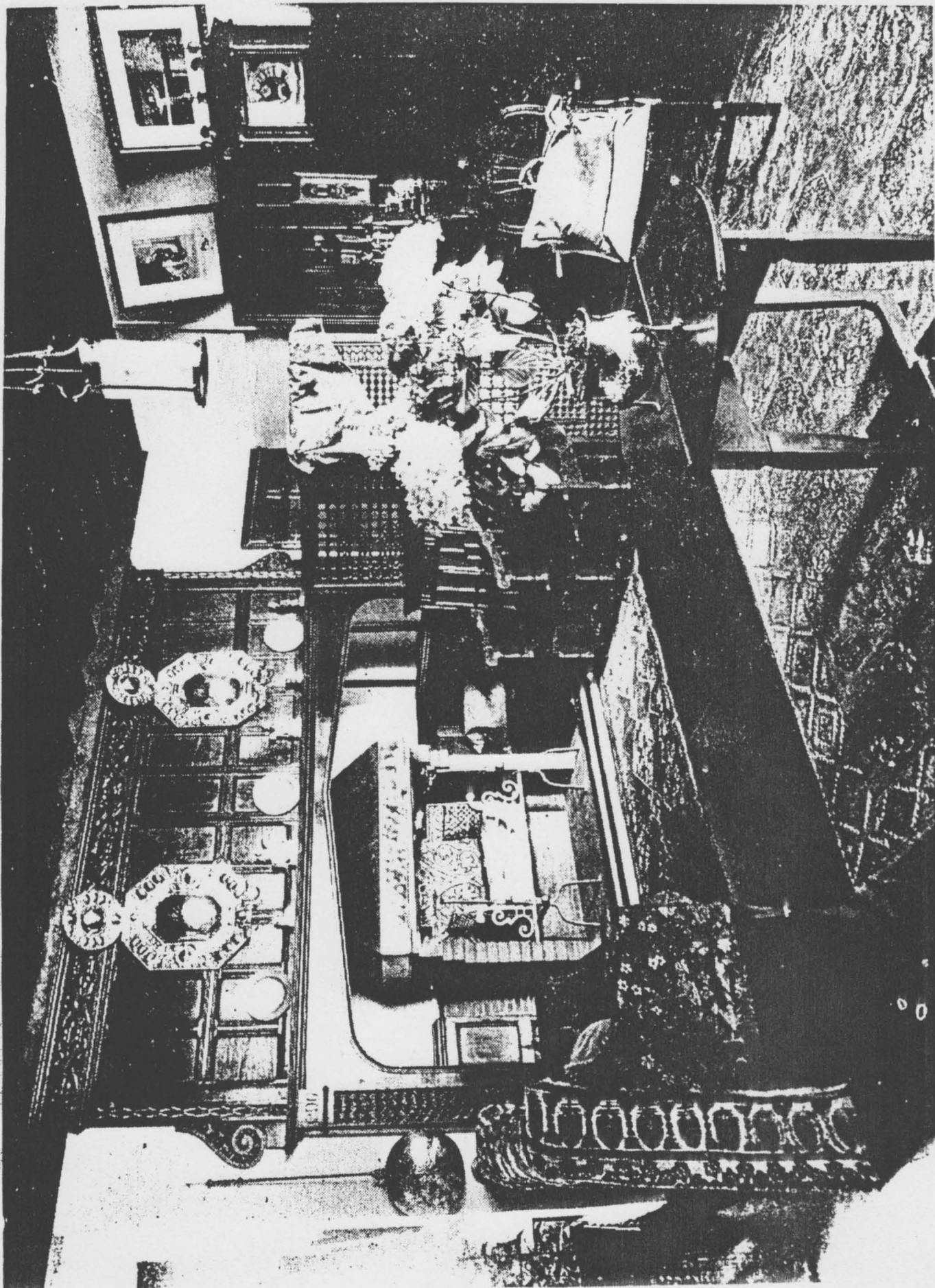


Fig 7a. Rake. The hall in 1925, showing Nevill's overmantel

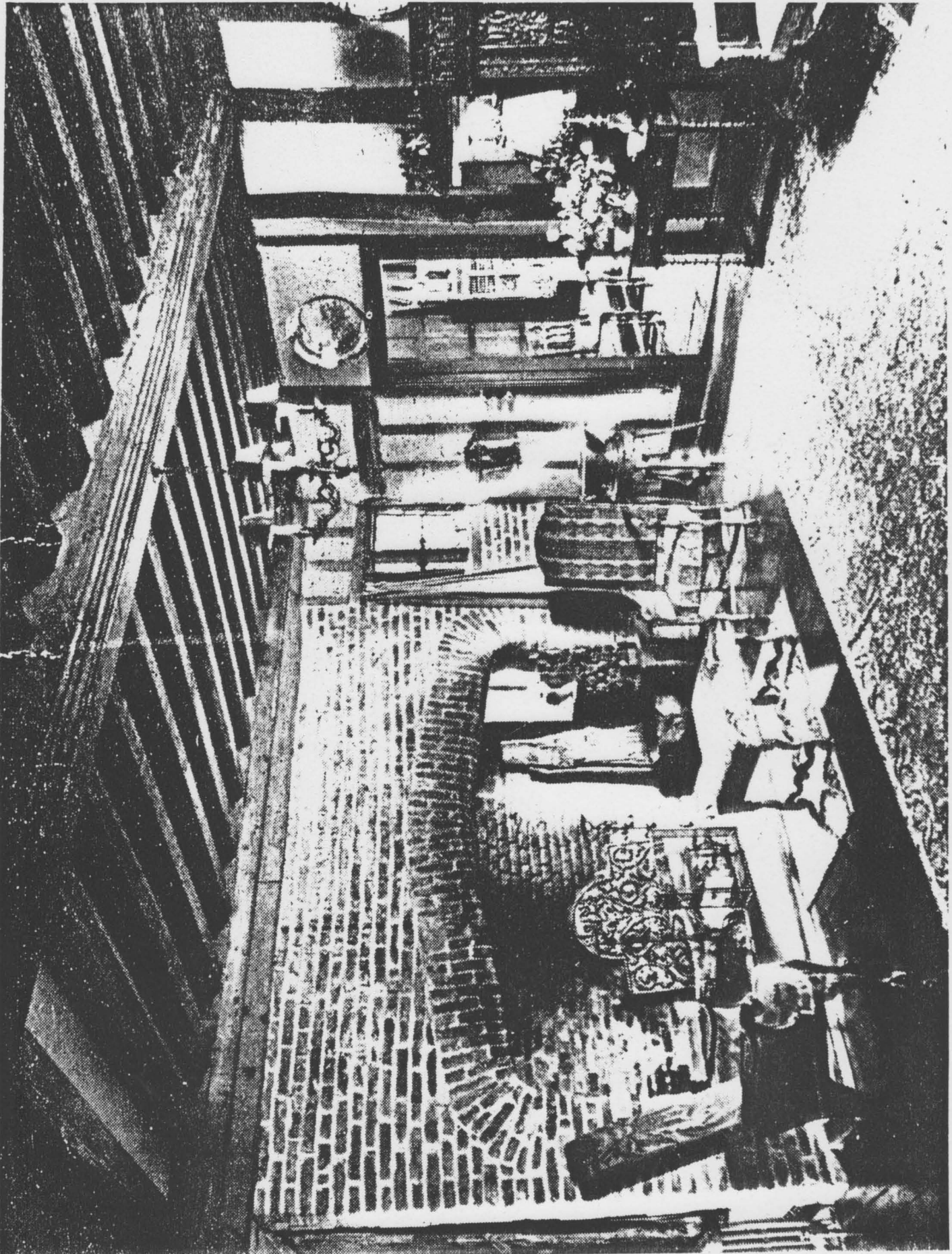


Fig 7b. Rake. The hall in 1950, showing Baillie Scott's restoration of the original brickwork of c1600 and the fireback of 1630

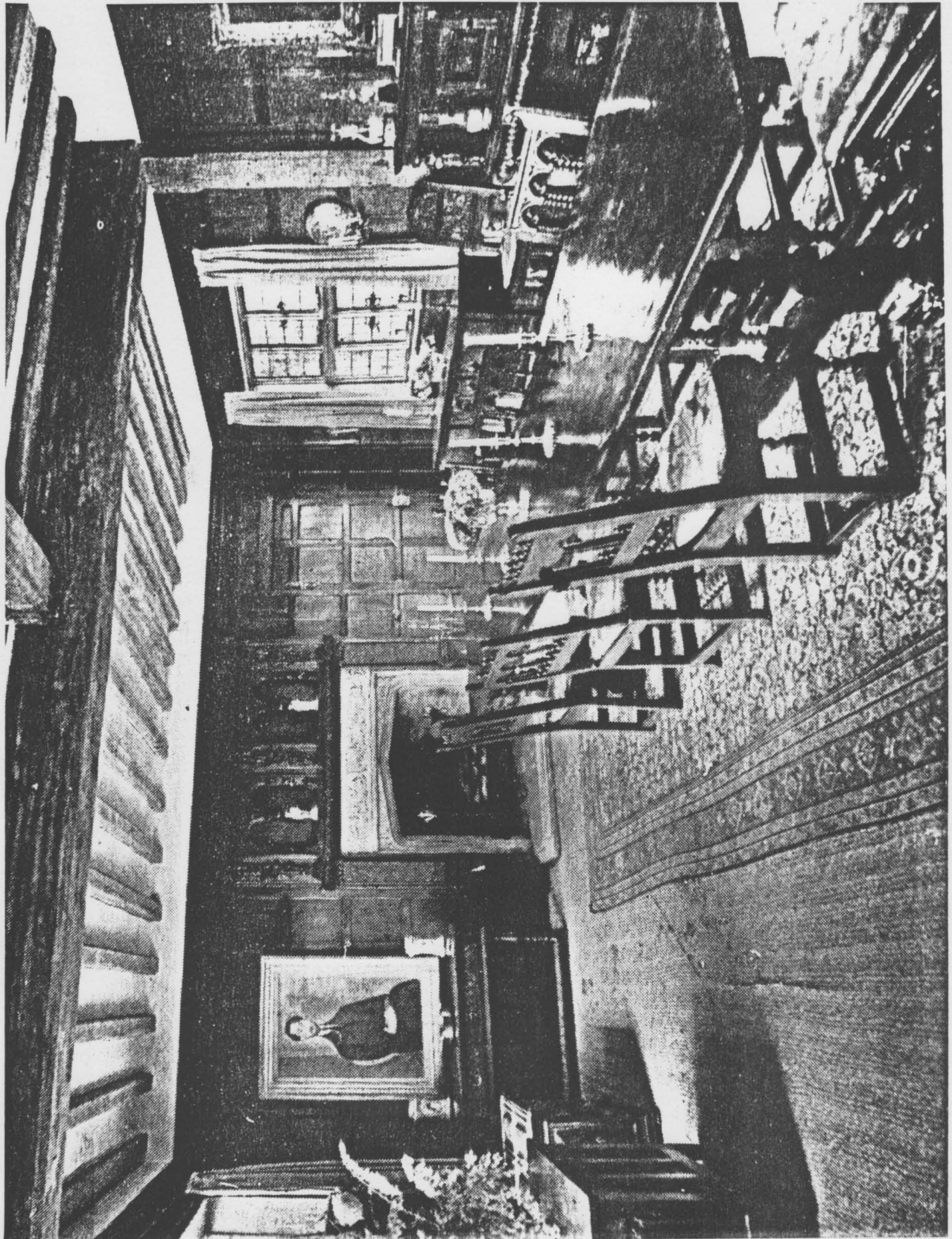


Fig 8. Rake. The dining room in 1950

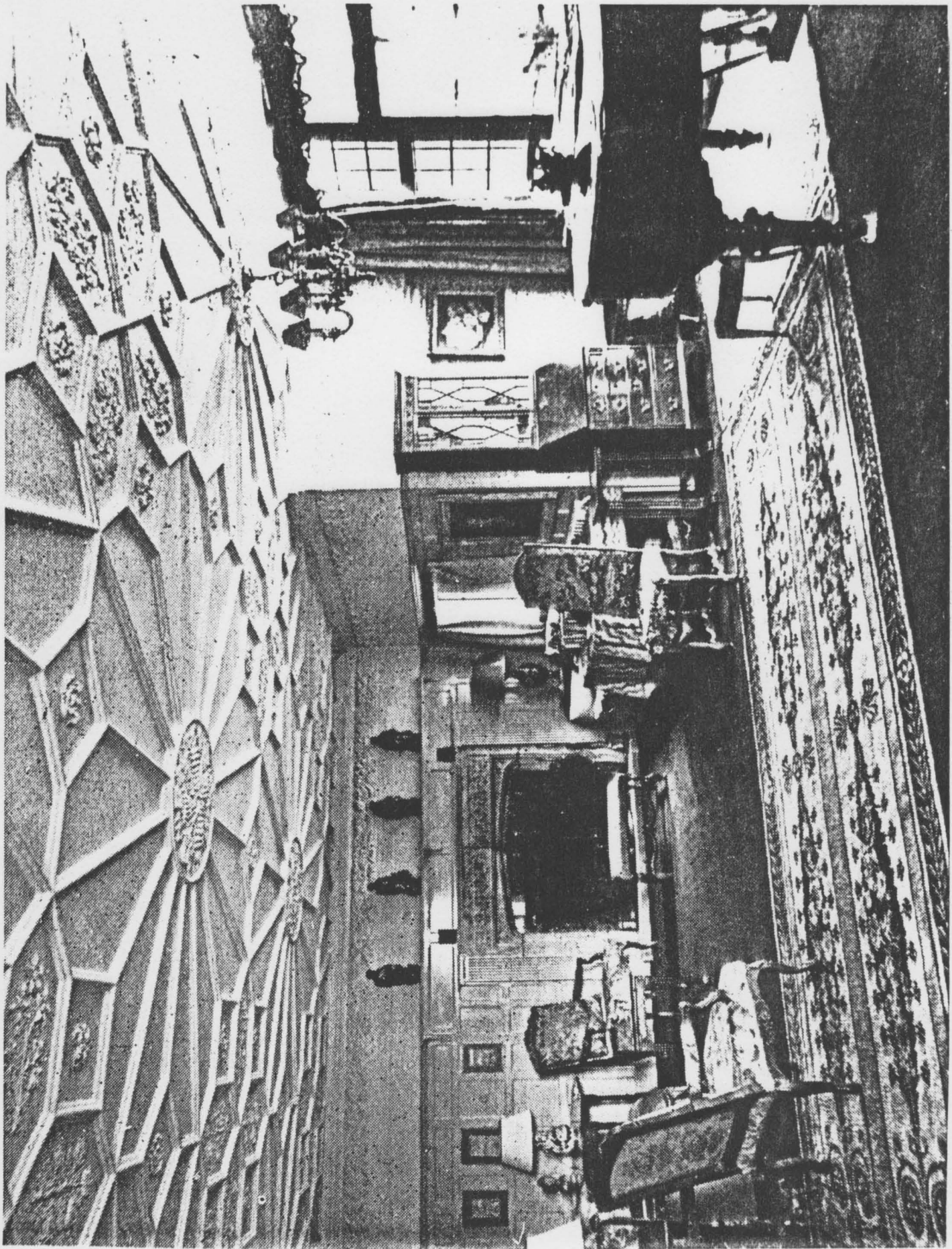


Fig 9. Rake. The drawing room, built by Baillie Scott c1908, in 1950



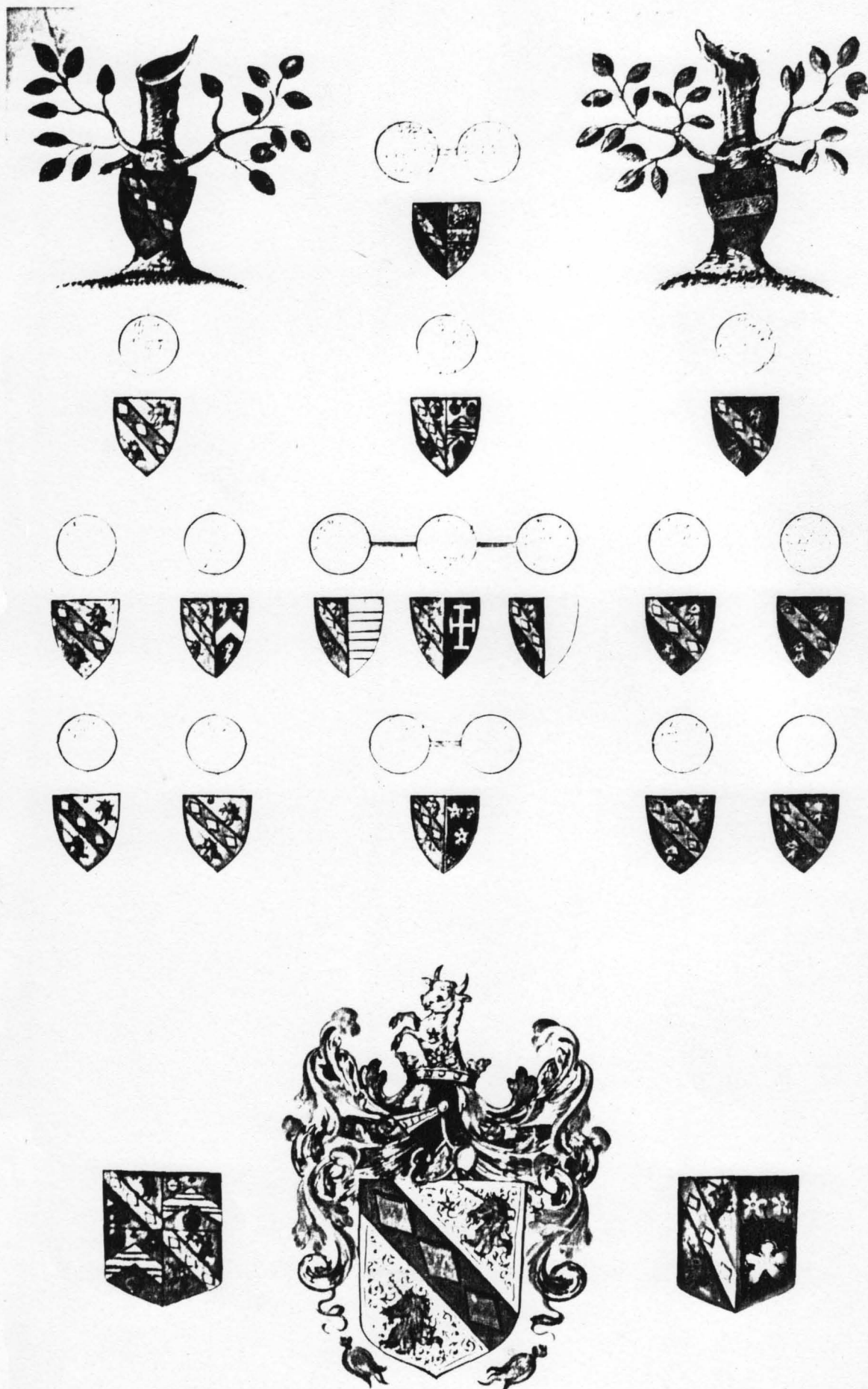


Fig 11a. Rake. The Roll of Arms of Anthony Smith, testified by Sir Richard St George, Clarenceux King of Arms, 1623-1635 (a detail is shown on fig 11)

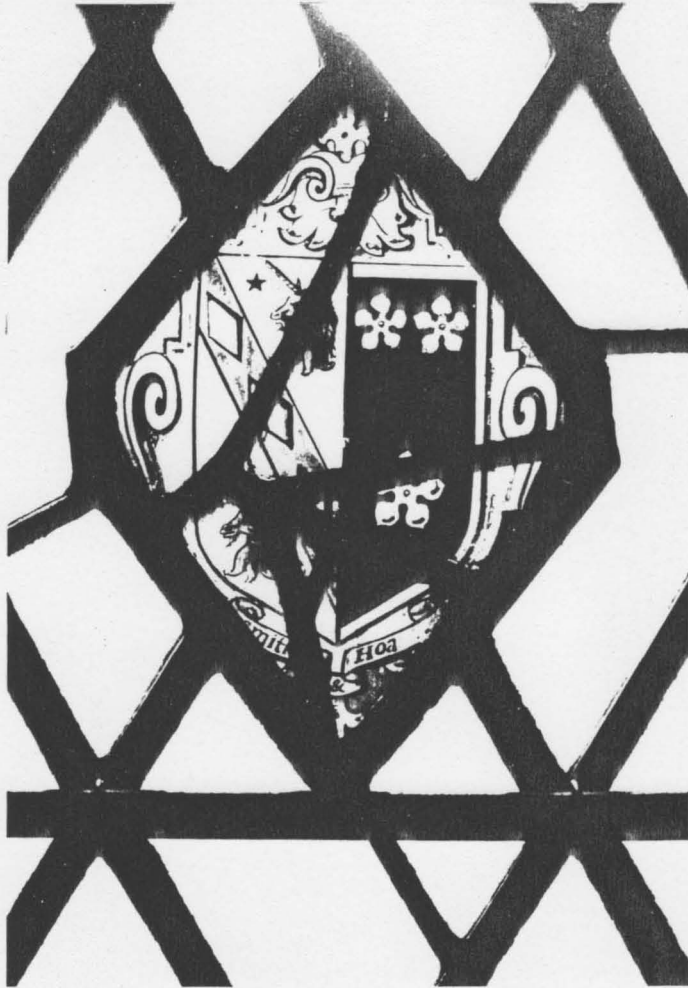


Fig 12a. Rake. 17th, 19th and 20th century armorial glass in the ground floor and billiards room windows: Smith/Hoare

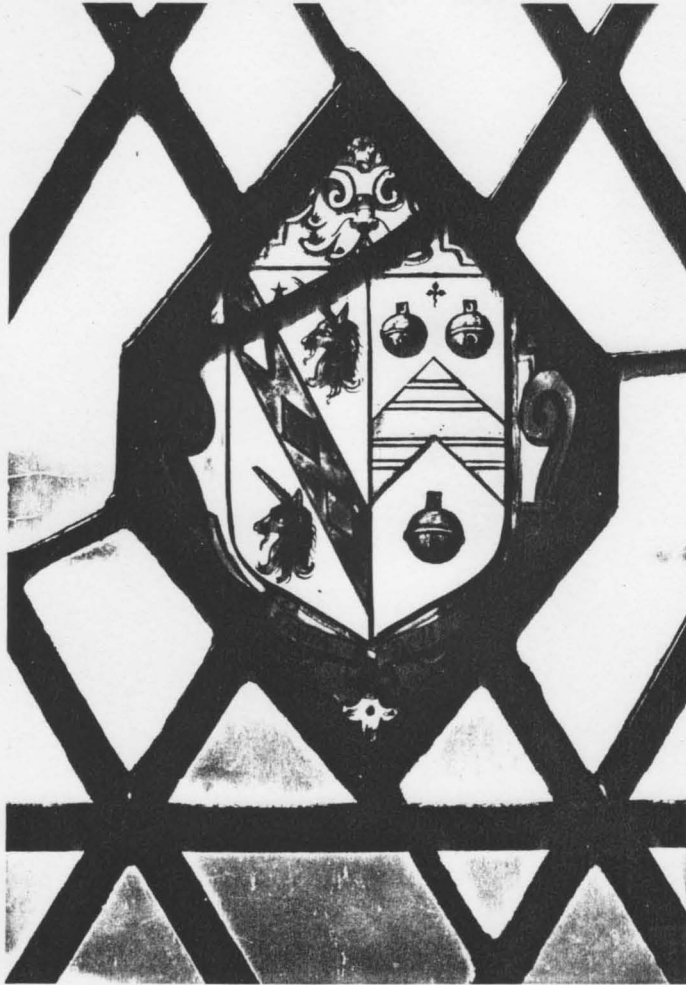


Fig 12b. Rake. 17th, 19th and 20th century armorial glass in the ground floor and billiards room windows: Smith/Bell

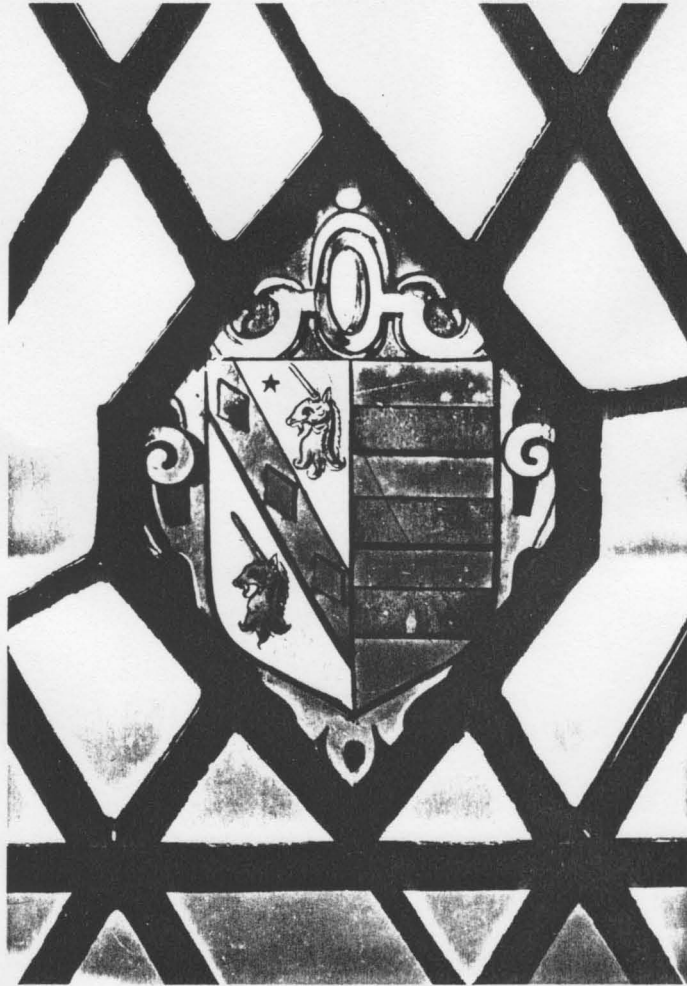


Fig 12c. Rake. 17th, 19th and 20th century armorial glass in the ground floor and billiards room windows: Smith/Muschamp

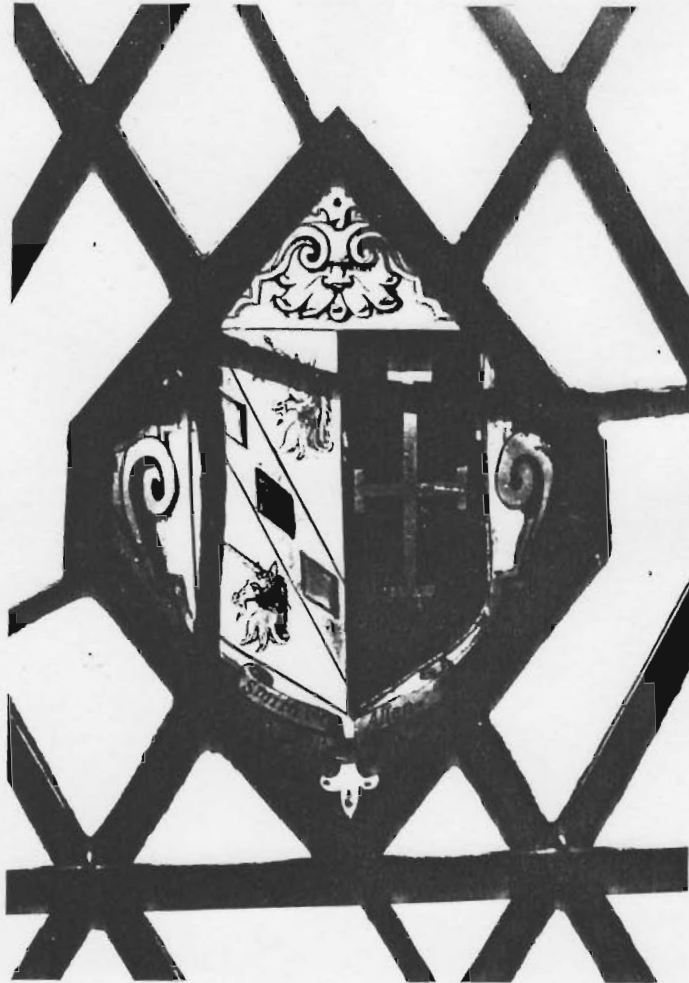


Fig 12d. Rake. 17th, 19th and 20th century armorial glass in the ground floor and billiards room windows: Smith/Allen



Fig 12e. Rake. 17th, 19th and 20th century armorial glass in the ground floor and billiards room windows: Smith



Fig 12f. Rake. 17th, 19th and 20th century armorial glass in the ground floor and billiards room windows: Smith/Harward

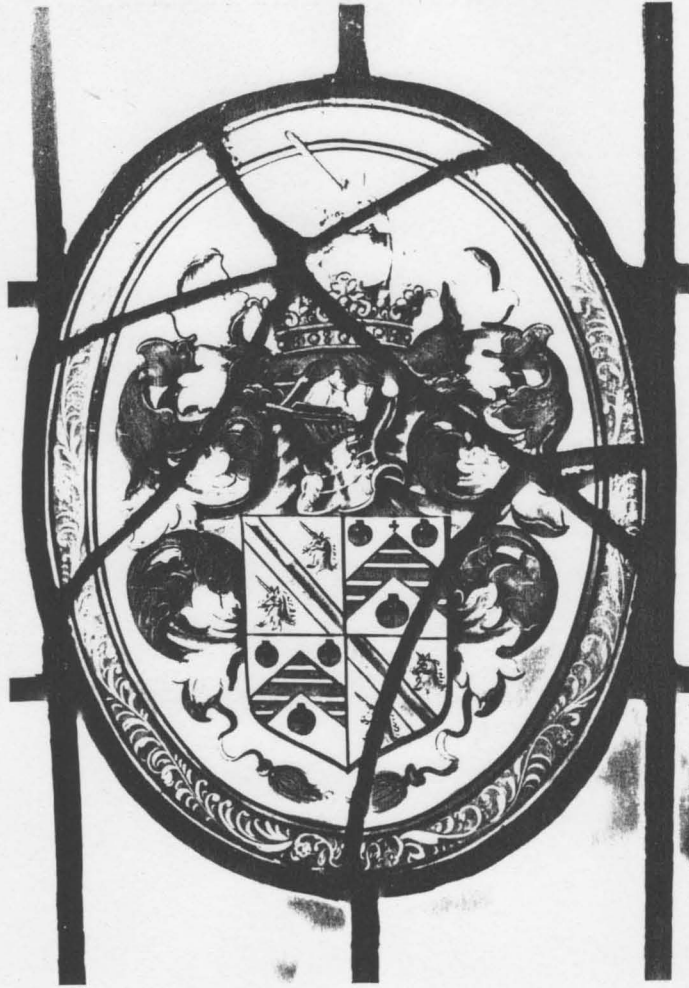


Fig 12g. Rake. 17th, 19th and 20th century armorial glass in the ground floor and billiards room windows: Smith/Bell



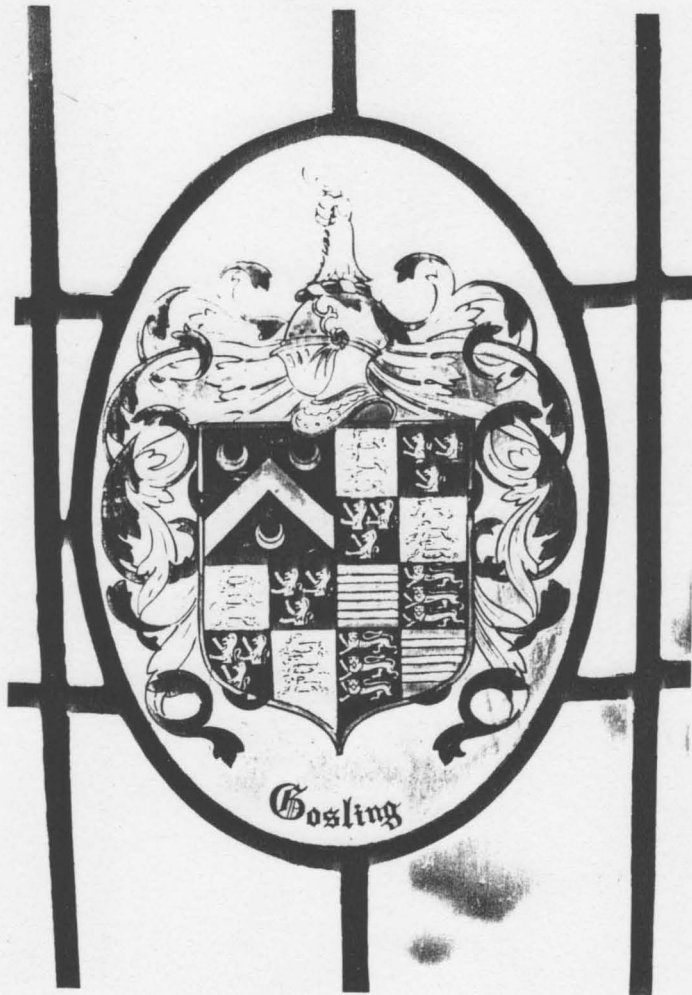


Fig 12h. Rake. 17th, 19th and 20th century armorial glass in the ground floor and billiards room windows: Gosling

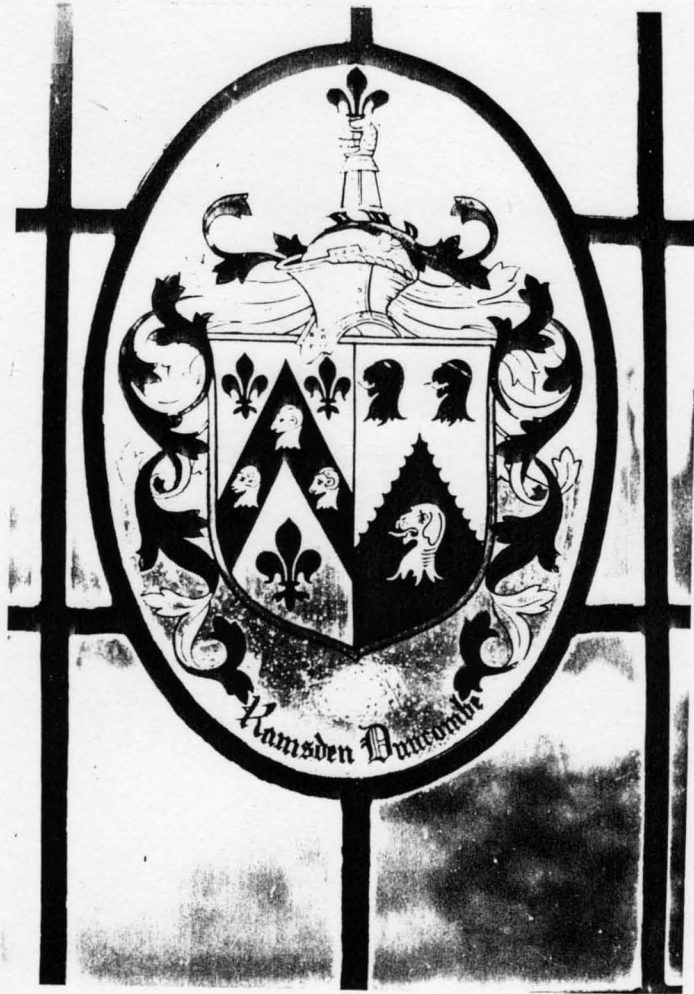


Fig 12i. Rake. 17th, 19th and 20th century armorial glass in the ground floor and billiards room windows: Ramsden/Duncombe



Fig 12j. Rake. 17th, 19th and 20th century armorial glass in the ground floor and billiards room windows: Smith/Harward



Fig 12k. Rake. 17th, 19th and 20th century armorial glass in the ground floor and billiards room windows: See of Jerusalem/Potter

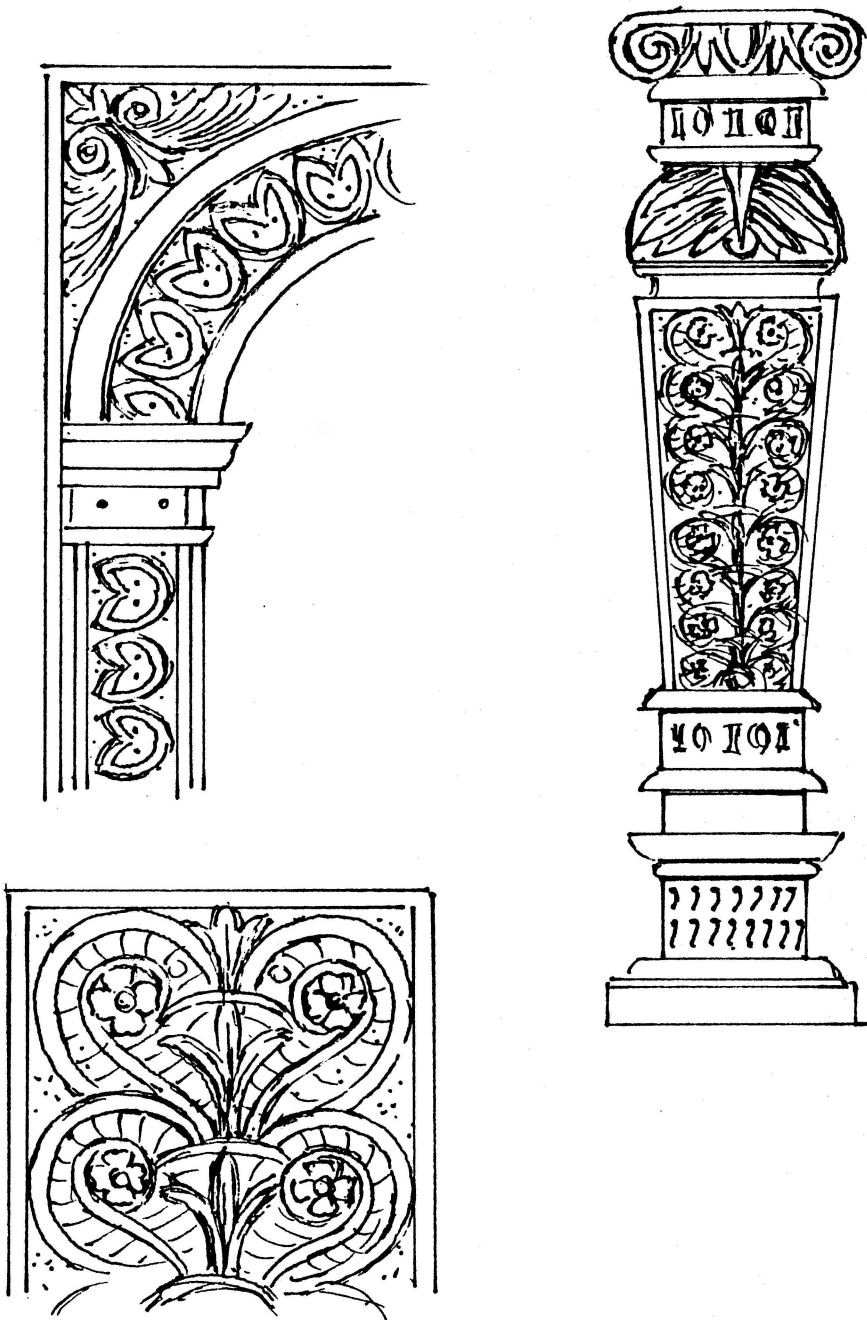


Fig 14a. Rake. Fireplace in the parlour: details of the carving (drawn by Miss E M Butts)

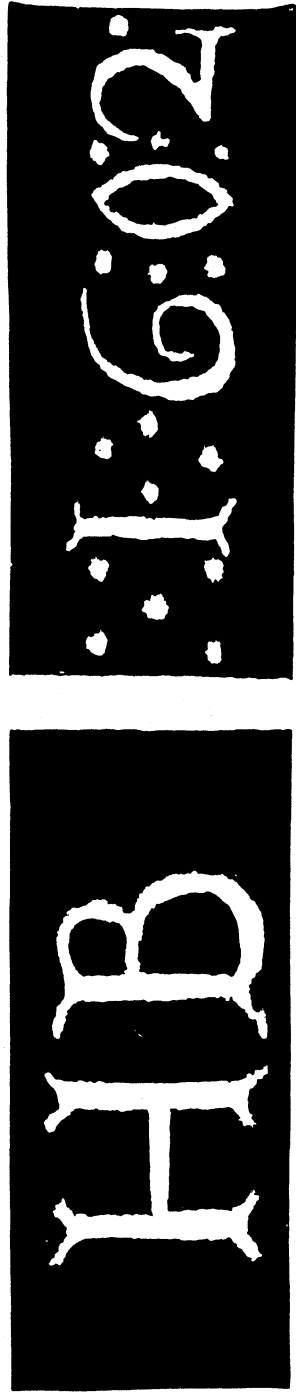


Fig 14b. Rake. Fireplace in the parlour: the Henry Bell inscription of 1602 (drawn by Miss E M Butts)



Fig 18a. Rake. The pigeon house of c1600, from the west

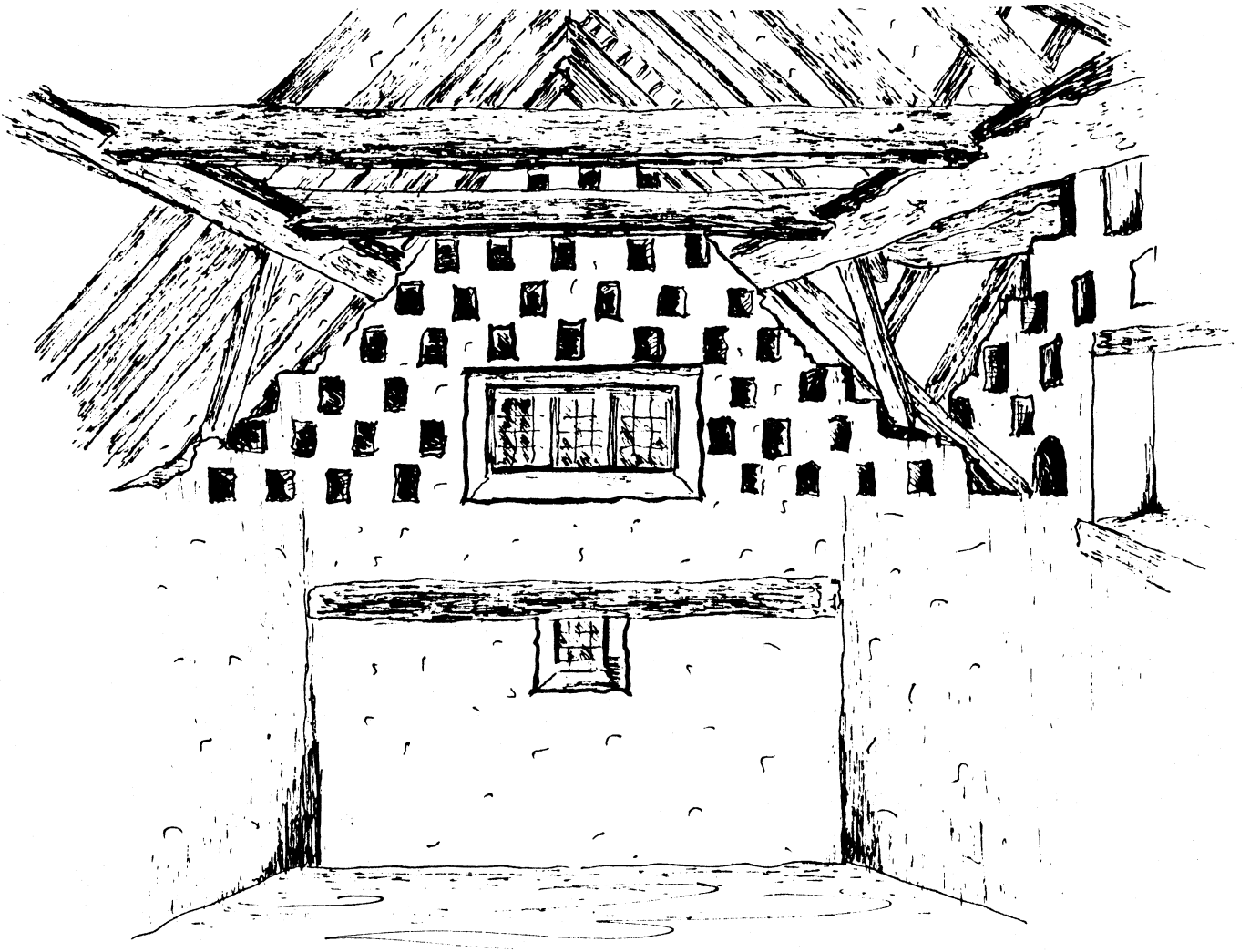


Fig 18b. Rake. The pigeon house of c1600: interior facing east (drawn by Mrs G M Wilson)