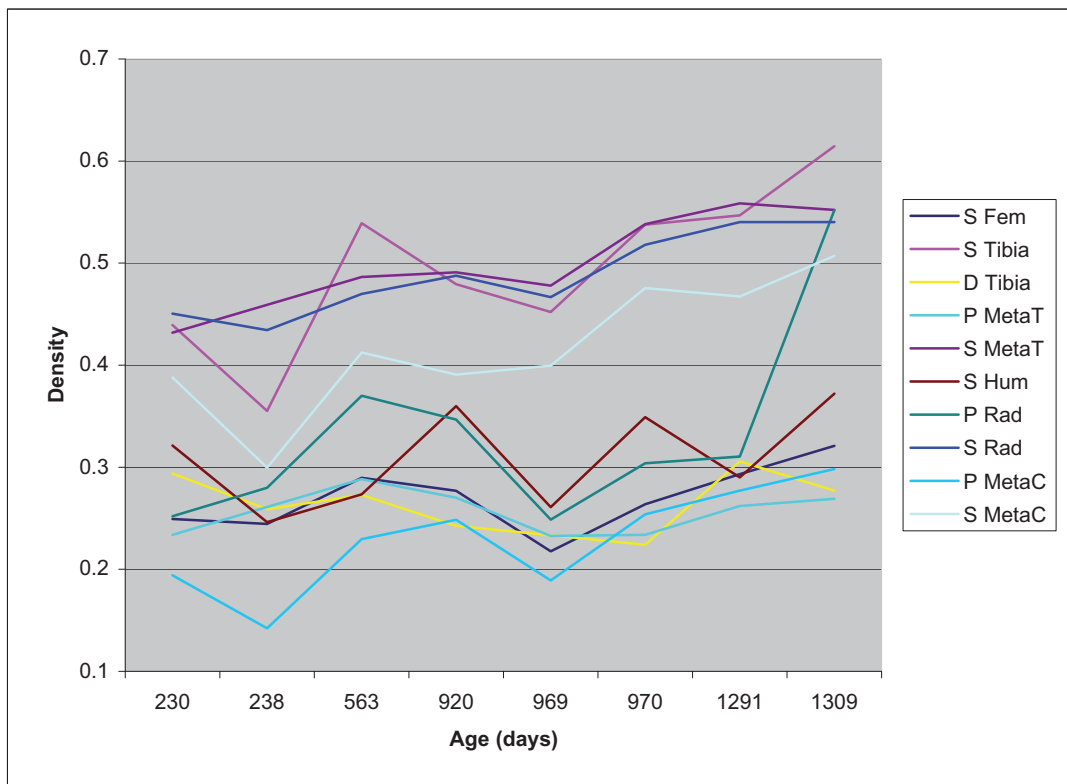
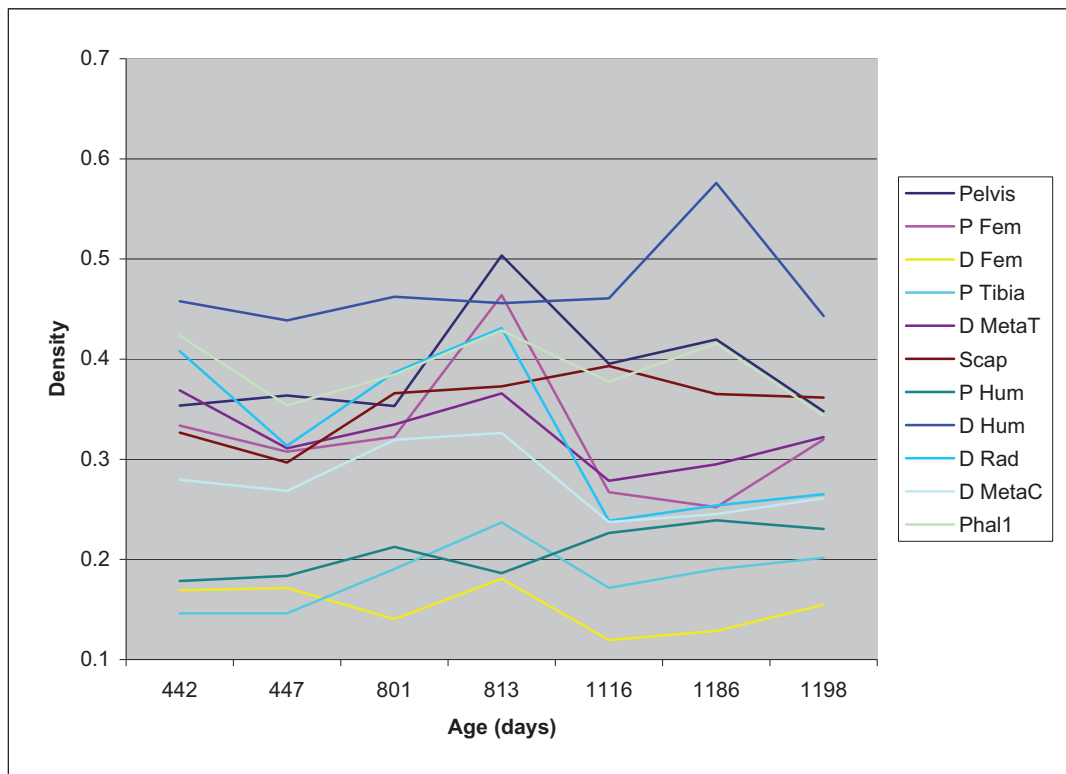


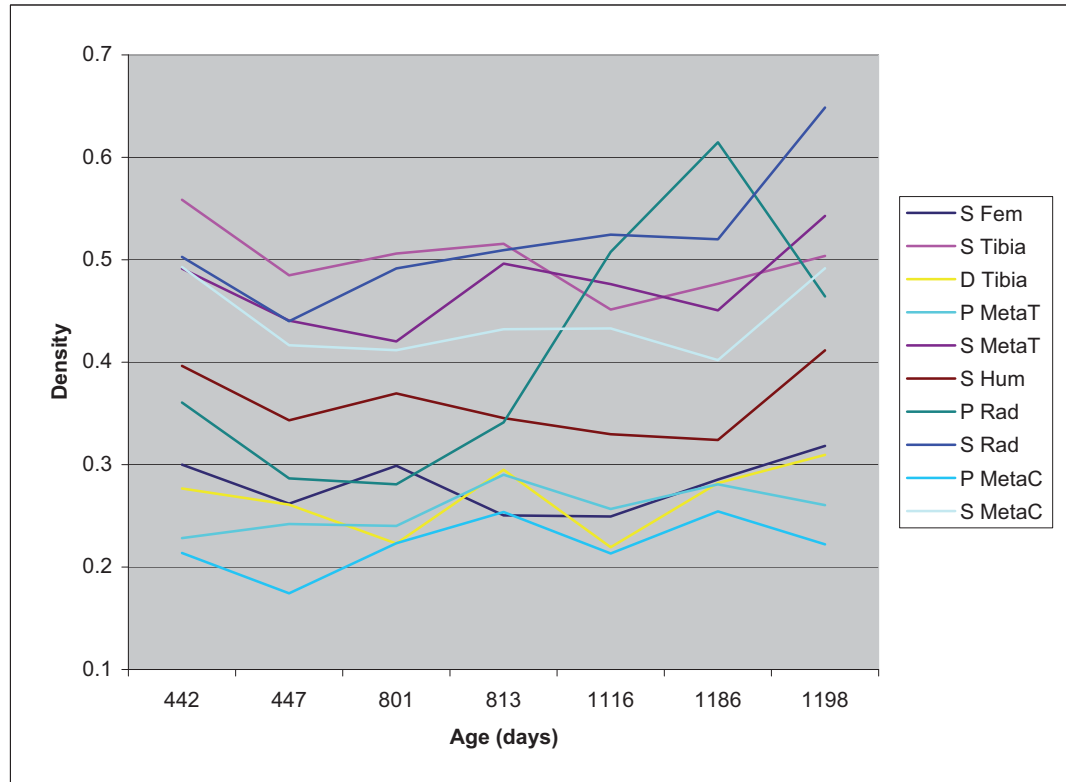
**Figure 8.7:** Showing the relative trabecular bone densities for castrated Shetland sheep of different ages. The animals are listed in order of increasing age. This figure intends to demonstrate the bone density changes of a single animal in the early period of its life.



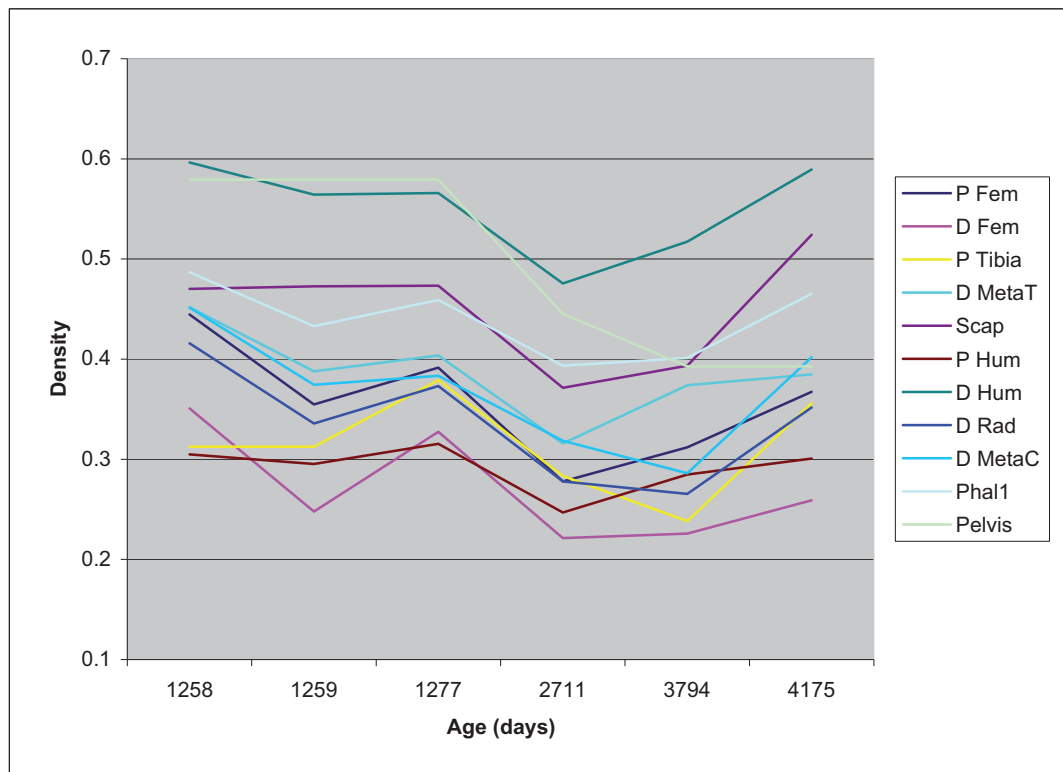
**Figure 8.8:** Showing the relative cortical bone densities for castrated Shetland sheep of different ages. The animals are listed in order of increasing age. This figure intends to demonstrate the bone density changes of a single animal in the early period of its life.



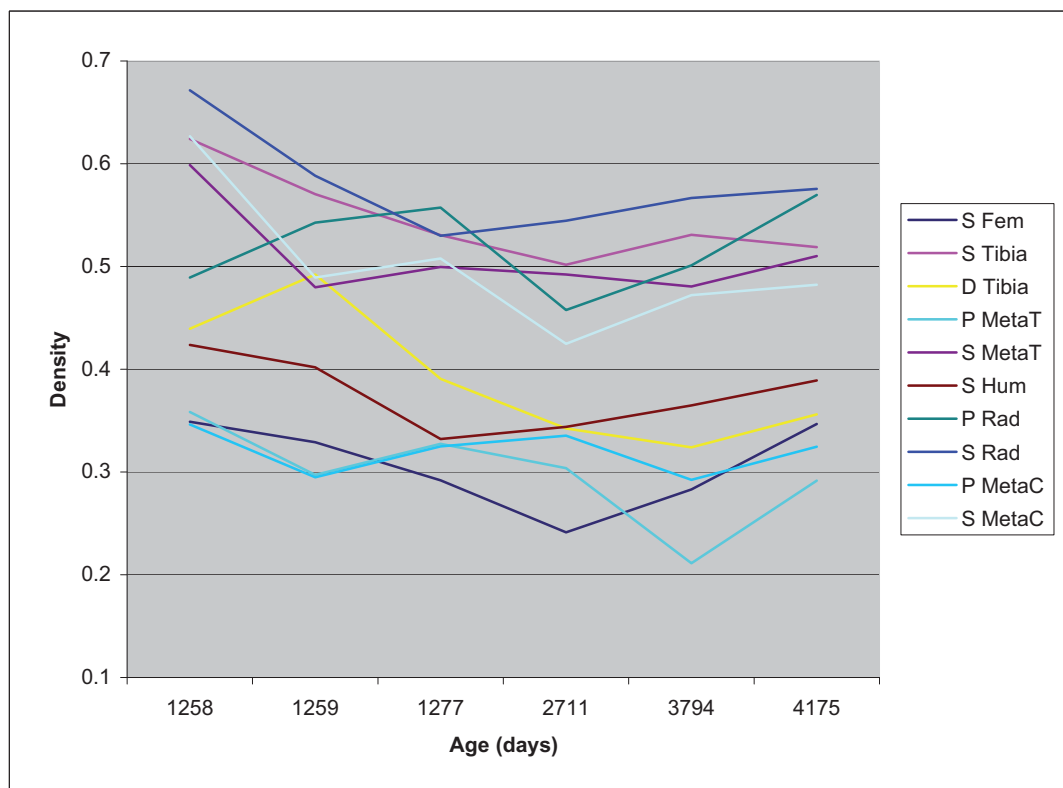
**Figure 8.9:** Showing the relative trabecular bone densities for castrated Shetland sheep of different ages. The animals are listed in order of increasing age. This figure intends to demonstrate the bone density changes of a single animal in the early period of its life.



**Figure 8.10:** Showing the relative cortical bone densities for castrated Shetland sheep of different ages. The animals are listed in order of increasing age. This figure intends to demonstrate the bone density changes of a single animal in the early period of its life.



**Figure 8.11:** Showing the relative trabecular bone densities for female Soay sheep of different ages. The animals are listed in order of increasing age. This figure intends to demonstrate the bone density changes of a single animal in the later period of its life.



**Figure 8.12:** Showing the relative cortical bone densities for female Soay sheep of different ages. The animals are listed in order of increasing age. This figure intends to demonstrate the bone density changes of a single animal in the later period of its life.