

**An Archaeological Evaluation
at Easter Langlee, Galashiels:**

Data Structure Report

For: Persimmon Homes East of Scotland
Unit 1 Wester Inch Business Park
Old Well Court
Bathgate
EH48 2TQ

National Grid Reference (NGR): NGR: NT 5220 3580

AOC Archaeology Project No: 20825

Prepared by: Martin Cook

Graphics Graeme Carruthers

Timing: Fieldwork December 2007
Report December 2007

Enquiries to: AOC Archaeology Group
Edgefield Industrial Estate
Edgefield Road
Loanhead
Midlothian
EH20 9SY

Tel. 0131 440 3593
Fax. 0131 440 3422
Email. admin@aocscot.co.uk

1 NON TECHNICAL SUMMARY

- 1.1 This report presents the results of an archaeological evaluation undertaken by AOC Archaeology Group prior to a proposed housing development at Easter Langlee, Galashiels, Borders (Figure 1). The work was commissioned by Persimmon Homes East of Scotland and was designed to satisfy the requirements of the local planning authority, as advised by Mr. Rory McDonald. All works were in accordance with the principles inherent in NPPG 5 (SOEnd 1994) and PAN 42 (SOEnd 1994a).
- 1.2 The objective of the fieldwork was to evaluate the archaeological potential of the development area. The work was carried out during December 2007 according to the terms of a *Written Scheme of Investigation* (AOC 2007) which was agreed by Mr Rory McDonald, and approved by the planning authority. The evaluation consisted of eighty-eight trenches totalling 15,210 m², a 7% sample of the development area.
- 1.3 A possible prehistoric enclosure (NMRS NT53NW 57), identified by aerial reconnaissance was the only known archaeological site within the proposed development area. The enclosure was subsequently identified in a series of evaluation trenches.
- 1.4 The only previously unknown archaeology identified during the evaluation comprised three pits found in close proximity to each other in Trench 35. These were all fully excavated during the evaluation.

2 INTRODUCTION

2.1 Background

- 2.1.1 This programme of works was designed fully to satisfy the requirements of the local planning authority, as advised by Mr Rory McDonald, Archaeology Officer at Borders Council, and was in accordance with the principles inherent in NPPG 5 (SOEnd 1994), PAN 42 (SOEnd 1994a) and NPPG 18 (SODD 1999). The works comprised both random and predictive evaluation trenching over the entire development area together with targeted trenching across the enclosure.

2.2 Location

- 2.2.1 The development area lies on the eastern fringes of Galashiels, on the northern side of the River Tweed (centred NGR: NT 5220 3580; Figure 1). At present the ground is improved pasture, with field boundaries as existing on the First Ordnance Survey (OS) Edition (1863). The southern boundary to the site is formed by the B6374, with an unclassified road (extending north from the B6374) forming the western boundary. To the north existing field boundaries mark the edge of the area whilst the valley of the 'Allan Water' and 'Ellwynd

Wood' form the eastern boundary of the development area.

2.3 Archaeological background

- 2.3.1 In the eastern portion of the development land take, on a flat terrace above the valley of the Allan Water and Ellwynd Wood, is situated a cropmark enclosure site (*NMRS* NT53NW 57; Figure 2). The enclosure measures approximately 75 m by 65 m, with a possible entrance along its south-eastern side. The enclosure ditch is appears 3 m to 5 m wide in places and is extremely well defined along its western and northern portions as seen on aerial photographs. The form of the enclosure is suggestive of a later prehistoric settlement feature. Despite the enclosure lying within the boundaries of the proposed development, but it is as yet unclear as to how the archaeological site will be affected by construction works as the housing layout has still to be finalised.
- 2.3.2 A few hundred metres north of the development area, two sites were identified in the 1960s during gravel extraction works. In 1965 the foundations of a Roman building, believed to be a shrine or monument of 2nd Century AD date were found (*NMRS* NT53NW 2). The second was described as an Iron Age smelting site (*NMRS* NT53NW 16) and consisted of edge set stones covering an area 3 m by 4 m which contained four hollows filled with burnt earth, charcoal, iron slag and undecorated prehistoric pottery (Martin 1967).

3 OBJECTIVES

- 3.1 The objectives of the evaluation were:
- i) to determine the character, condition, extent, quality and date of any archaeologically significant remains in the proposed development area;
 - ii) given that significant archaeological deposits be discovered, the preparation of a mitigation strategy compliant with NPPG 5 and PAN 42 will be undertaken.

4 METHODOLOGY

- 4.1 Eighty-eight trenches with a combined basal area of 15,210 m² were excavated, representing slightly in excess of the required 7 % sample. The trenches were of varying lengths and set on varying orientations (Figures 2 - 4). Six trenches were excavated across the location of the cropmark enclosure (*NMRS* NT53NW 57). Weather conditions during the evaluation varied between heavy showers and dry fine weather.
- 4.2 Stripping of the overburden was by means of two 360° tracked excavators equipped with a toothless ditching buckets approximately 2.0 m wide. Excavation was undertaken in shallow units/spits until the first significant archaeological horizon or natural subsoil was reached. Trial trenches were

extended around specific archaeological features to determine their lateral extent. All machine excavation was supervised by an experienced field archaeologist.

- 4.3 Trenches 12, 62 and 89 were not excavated due to a combination of live services (Tr.89), mature woodland (Tr.12) and the presence of a former quarry (Tr.62). In order to fulfill the sampling requirement, a series of trenches were correspondingly extended in length.
- 4.4 All trial trenching was undertaken according to AOC Archaeology Group's standard operating procedures. All significant archaeological features were cleaned and fully defined. These were then investigated in order to determine their character, function, nature, date and significance. The trenches were backfilled on completion of evaluation.

5 RESULTS

5.1 Introduction

- 5.1.1 The evaluation was undertaken between 3rd and 14th December 2007. The following should be read together with the various data gathered from the evaluation as presented in Appendices 1-6, Figures 1-4 and Plates 1-3.
- 5.1.2 The topsoil across the site varied in depth from 0.20 - 0.60 m depending on the topography of the local area, and was found to overlie natural subsoil comprising a combination of red gravels and sands. A series of both rubble and clay field drains were identified across the site.

5.2 Field Evaluation Results

- 5.2.1 Although plough scars were visible in the subsoil, the fields had not been ploughed within living memory (Mr Kevin Thomson, farmer). Various modern features were visible on the surface, including cappings from site investigation works and a probable horse burial (Mr Thomson pers comm.).
- 5.2.2 Three possibly significant features were identified; all occurring in close proximity to each other in Trench 35 (Figure 2; NGR: NT 5206 3560). Pits [3502], [3504] and [3506] varied in shape, size and form but all contained a combination of burnt bone and charcoal. Due to their limited size, all three features were fully excavated and subject to complete soil sampling. Although no artefacts were recovered from the features to determine date or function, the inclusion of bone and charcoal suggests that they comprised the results of some episode of burning. Whether this relates to something as mundane as food preparation or perhaps some form of cremation burial is as yet undetermined.

- 5.2.3 An area measuring approximately 100 m² was excavated around the three pits in an attempt to identify any associated features. No other features were identified within this trench extension.

5.3 Enclosure Evaluation results

- 5.3.1 Six trenches were targeted across the location of the cropmark enclosure (NMRS: NT53NW 57; Figure 2). The topsoil was shallow here, measuring only up to 0.30 m in depth. The enclosure ditch was identified in Trenches 79, 80, 81, 86 and 88; while no trace of the ditch or any other feature were identified within Trench 92 (Figures 2 and 3). A slot excavated in Trench 88 revealed the ditch possessing a gently sloping cut [8802], running in to a flat base and filled by a single fill of dark brown light loamy soil [8801] (Figure 3 and Plate 1). The ditch measured up to 3.16 m in width by up to 1.30 m in depth. No finds were recovered from the feature.



Plate 1: South-facing section through enclosure ditch [8802]

- 5.3.2 A second ditch ([8602] and [8804]) was identified within Trenches 86 and 88 (Figure 2 and Plate 2). The north to south aligned cut, measuring up to 4.60 m in width, ran parallel to and within ditch [8802] and may represent a probable ditch recorded on Aerial Photographs. The feature was left unexcavated.



Plate 2: Detail of unexcavated Ditch section [8804]

- 5.3.3 An east to west aligned linear cut [8805] was recorded between the two ditches [8802] and [8804] (Figure 2 and Plate 3). The feature, located on the edge of the trench, comprised a curving cut, measuring 9.97 m in length and was filled by a loose sandy soil [8806] with frequent inclusions of stones. The feature may represent a foundation cut for either a palisade or a ring-groove. The feature was left unexcavated.
- 5.3.4 A possible linear cut [8808] was identified at the eastern end of Trench 88. The north to south aligned cut, located outside the main ditch cut [8802], measured approximately 0.40 m in width and was filled by a sandy soil with frequent angular stone inclusions.
- 5.3.5 Generally the features appeared to have survived better in the eastern part of the flat terrace, the enclosure apparently having been eroded away in the western segment.



Plate 3: Possible palisade slot [8805]

6 DISCUSSION

- 6.1 Only a small, single discreet group of previously unknown features were identified (see Trench 35). The pits which varied in shape, size and form were fully excavated and sampled during the evaluation works. The burnt bone and charcoal suggests some form of anthropogenic activity, either perhaps prehistoric cremation burial or food preparation of unknown date. Upon extending the archaeologically investigated area around these features no further archaeological material was unearthed by the evaluation. It is considered that these three features represent the full suite of surviving features in the local area.
- 6.2 The cropmark enclosure (*NMRS NT53NW 57*) was identified in Trenches 79, 80, 81, 86 and 88, but was absent from Trench 92. On excavation, the feature appeared to be well preserved; surviving to a depth of 1.30 m and up to 3.16 m in width. Additionally, a second feature identified in Trenches 86 and 88 may constitute an internal ditch, which again appears to have survived only in the east of the area. Two features, [8805] and [8808], recorded in Trench 88 may

constitute foundation slots for either a palisade or possibly a structure such as a ring-ditch roundhouse.

- 6.3 No datable artefacts were recovered from the evaluation works, but this may reflect the limited extent of intrusive investigation of the features, rather than dearth of actual material assemblage present.
- 6.4 The cropmark enclosure (NMRS NT53NW 57) and adjacent or associated features (?) as unearthed in Trenches 79, 80, 81, 86 and 88 are not under immediate risk of damage. However should the development proposals present an adverse physical impact (either due to house building, infrastructure works or landscaping) two options are viable as per the guidelines set out in NPPG 5 (SOEnd 1994) and PAN 42 (SOEnd 1994a).
 1. the cropmark enclosure is preserved *in situ* (the default option under current planning guidelines). This could be achieved by:
 - i. altering the development design and leaving the area as open ground such as a play area or garden;
 - ii. burying the archaeological site and building on top of the imported made ground;
 - iii. foundation rafting over the site, and then building on top. This is perhaps less feasible on both archaeological and engineering grounds given the size of the site
 2. the cropmark enclosure is *preserved by record* - that is to say fully excavated and subsequently subjected to post-excavation analyses and publication.

7. CONCLUSION

- 7.1 The development area contains a highly significant archaeological site with existing development proposals avoiding the site. Should these proposals change whereby there is a significant adverse physical impact on the enclosure site, discussions should be instigated immediately with Scottish Borders Council via Mr McDonald about an appropriate mitigation strategy.
- 7.2 The three soil samples from the Trench 35 pits are currently held at AOC Archaeology's Loanhead premises. These samples should be processed with a view to presenting the cremated bone to a specialist for identification.

8 BIBLIOGRAPHIC REFERENCES:

AOC 2007 *Easter Langlee Evaluation: Written Scheme of Investigation*. AOC unpublished client document.

Martin, C. 1967, 'Easter Langlee' *Discovery and Excavation*

The Scottish Office Environment Department 1994. *Archaeology - the Planning Process and Scheduled Monument Procedures. Planning Advice Note PAN42*. January 1994.

SOEnD 1994 *National Planning Policy Guideline 5: Archaeology and Planning*. The Scottish Office Environment Department.

SOEnD 1994a *Planning Advice Note 42. Archaeology – the Planning Process and Scheduled Ancient Monument Procedures*. The Scottish Office Environment Department.

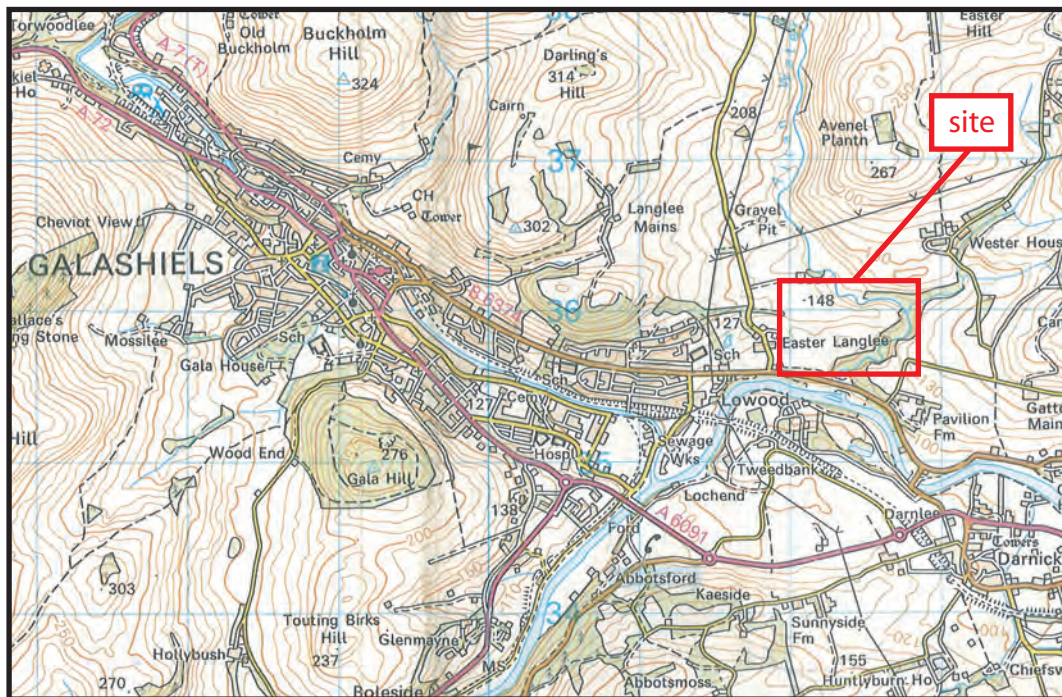
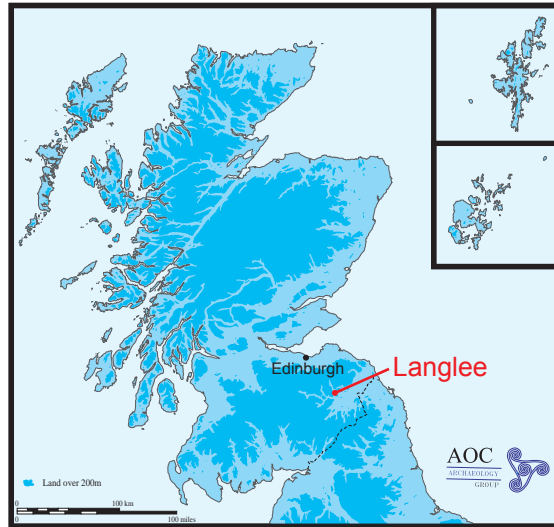
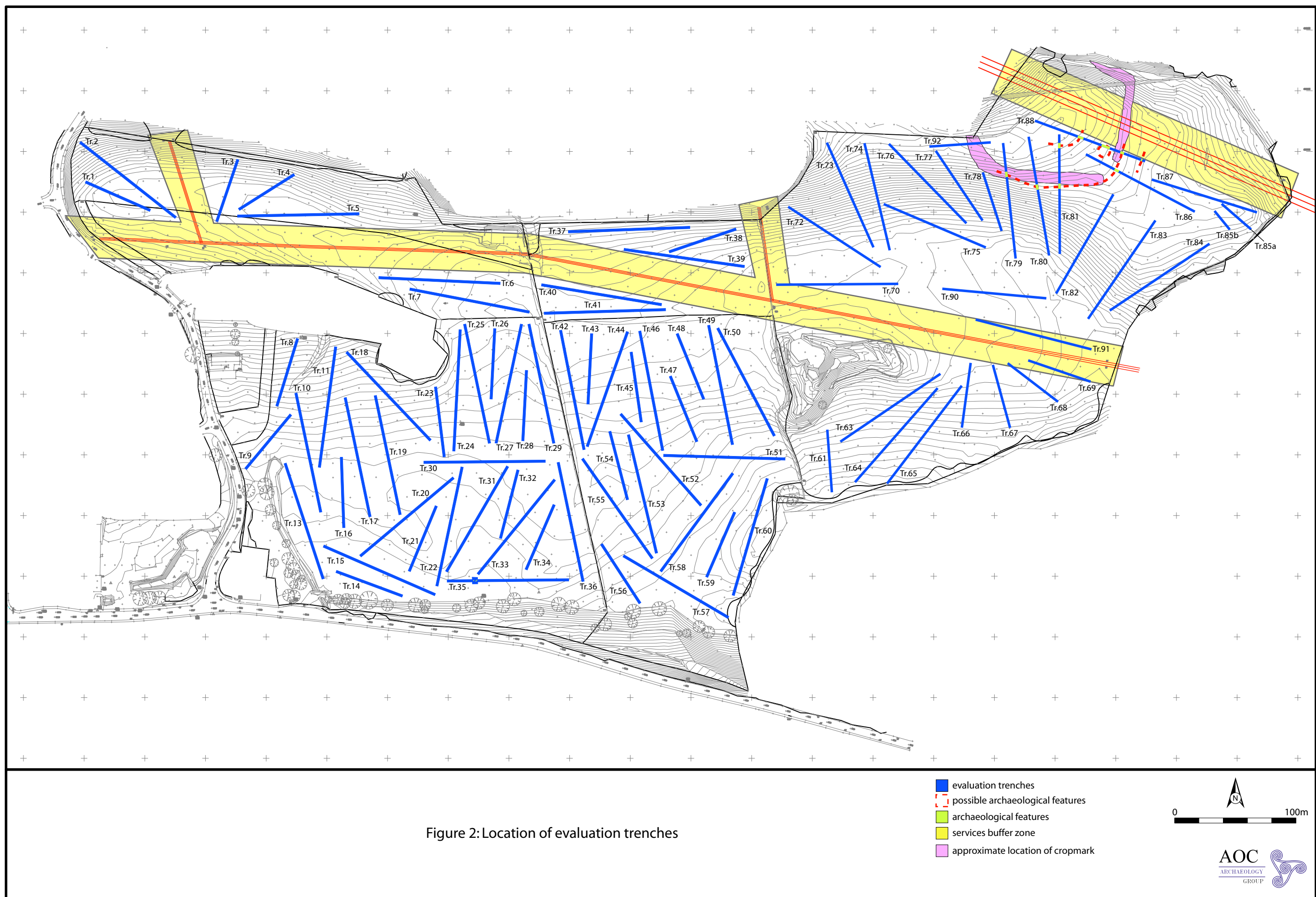


Figure 1: Site location



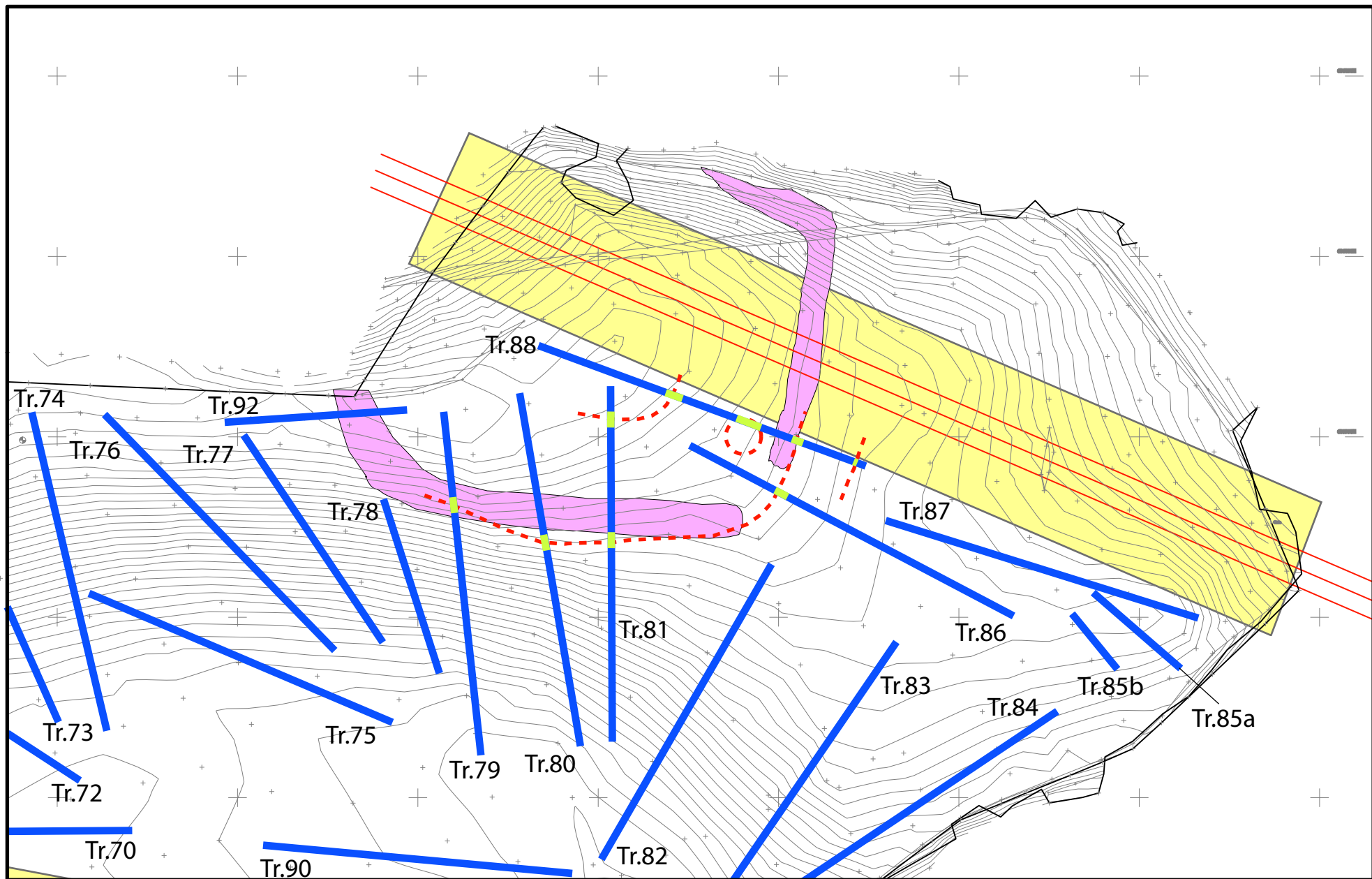


Figure 3: Detail of features around cropmark

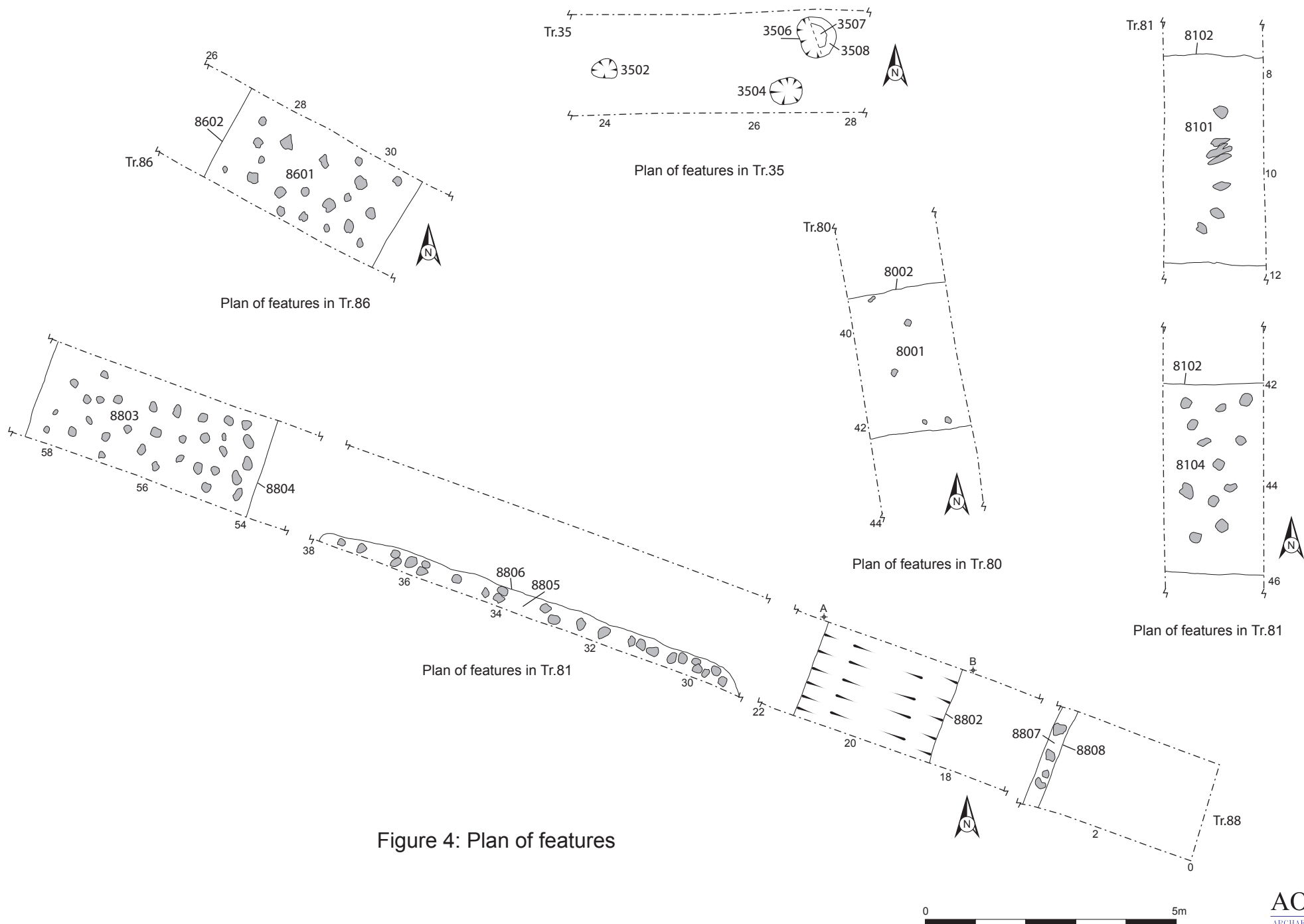
- evaluation trenches
- - - possible archaeological features
- archaeological features
- services buffer zone
- approximate location of cropmark

0 100m



AOC
ARCHAEOLOGY
GROUP





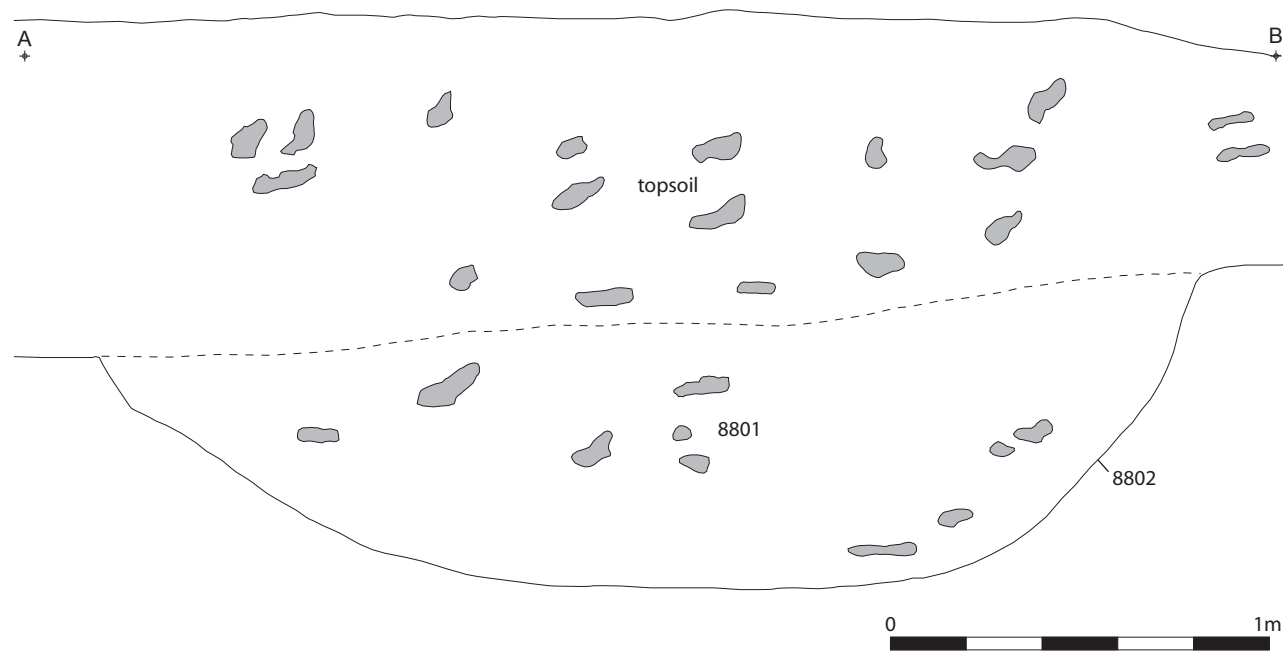


Figure 5: South facing section of ditch in Tr.81

APPENDIX 1: TRENCH DESCRIPTIONS

Trench 1

<i>Dimensions</i>	50 m by 2 m
<i>Orientation</i>	North-west to south-east
<i>Depth of Topsoil</i>	0.25 m
<i>Depth of excavation</i>	0.30 m
<i>Significant Features</i>	None
<i>Modern</i>	None
<i>Other</i>	None
<i>Subsoil</i>	Red gravel
<i>Finds</i>	None

Trench 2

<i>Dimensions</i>	100 m by 2 m
<i>Orientation</i>	North-west to south-east
<i>Depth of Topsoil</i>	0.25 m
<i>Depth of excavation</i>	0.30 m
<i>Significant Features</i>	None
<i>Modern</i>	None
<i>Other</i>	None
<i>Subsoil</i>	Red gravel
<i>Finds</i>	None

Trench 3

<i>Dimensions</i>	50 m by 2 m
<i>Orientation</i>	North to south
<i>Depth of Topsoil</i>	0.40 m
<i>Depth of excavation</i>	0.50 m
<i>Significant Features</i>	None
<i>Modern</i>	None
<i>Other</i>	None
<i>Subsoil</i>	Red gravel
<i>Finds</i>	None

Trench 4

<i>Dimensions</i>	50 m by 2 m
<i>Orientation</i>	North-east to south-west
<i>Depth of Topsoil</i>	0.30 m
<i>Depth of excavation</i>	0.40 m
<i>Significant Features</i>	None
<i>Modern</i>	None
<i>Other</i>	None
<i>Subsoil</i>	Red gravel
<i>Finds</i>	None

Trench 5

<i>Dimensions</i>	100 m by 2 m
<i>Orientation</i>	East to west
<i>Depth of Topsoil</i>	0.40 m
<i>Depth of excavation</i>	0.50 m
<i>Significant Features</i>	None
<i>Modern</i>	None
<i>Other</i>	None
<i>Subsoil</i>	Red gravel
<i>Finds</i>	None

Trench 6

<i>Dimensions</i>	100 m by 2 m
<i>Orientation</i>	East to west

<i>Depth of Topsoil</i>	0.40 m
<i>Depth of excavation</i>	0.50 m
<i>Significant Features</i>	None
<i>Modern</i>	None
<i>Other</i>	None
<i>Subsoil</i>	Red gravels and sands
<i>Finds</i>	None

Trench 7

<i>Dimensions</i>	100 m by 2 m
<i>Orientation</i>	East to west
<i>Depth of Topsoil</i>	0.40 m
<i>Depth of excavation</i>	0.50 m
<i>Significant Features</i>	None
<i>Modern</i>	Rubble drains
<i>Other</i>	None
<i>Subsoil</i>	Red gravels and sands
<i>Finds</i>	None

Trench 8

<i>Dimensions</i>	50 m by 2 m
<i>Orientation</i>	North-east to south-west
<i>Depth of Topsoil</i>	0.25 m
<i>Depth of excavation</i>	0.30 m
<i>Significant Features</i>	None
<i>Modern</i>	None
<i>Subsoil</i>	Red gravels and sands
<i>Finds</i>	None

Trench 9

<i>Dimensions</i>	55 m by 2 m
<i>Orientation</i>	North-east to south-west
<i>Depth of Topsoil</i>	0.25 m
<i>Depth of excavation</i>	0.30 m
<i>Significant Features</i>	None
<i>Modern</i>	Modern dumping
<i>Subsoil</i>	Red gravels and sands
<i>Finds</i>	None

Trench 10

<i>Dimensions</i>	100 m by 2 m
<i>Orientation</i>	North to south
<i>Depth of Topsoil</i>	0.25 m
<i>Depth of excavation</i>	0.30 m
<i>Significant Features</i>	None
<i>Modern</i>	None
<i>Subsoil</i>	Red gravels and sands
<i>Finds</i>	None

Trench 11

<i>Dimensions</i>	100 m by 2 m
<i>Orientation</i>	North-east to south-west
<i>Depth of Topsoil</i>	0.30-0.40 m
<i>Depth of excavation</i>	0.50 m
<i>Significant Features</i>	None
<i>Modern</i>	None
<i>Subsoil</i>	Red gravels and sands
<i>Finds</i>	None

Trench 13

<i>Dimensions</i>	100 m by 2 m
<i>Orientation</i>	North to south
<i>Depth of Topsoil</i>	0.20 m
<i>Depth of excavation</i>	0.30 m
<i>Significant Features</i>	None
<i>Modern</i>	None
<i>Subsoil</i>	Red gravels and sands
<i>Finds</i>	None

Trench 14

<i>Dimensions</i>	50 m by 2 m
<i>Orientation</i>	North-west to south-east
<i>Depth of Topsoil</i>	0.25 m
<i>Depth of excavation</i>	0.30 m
<i>Significant Features</i>	None
<i>Modern</i>	None
<i>Subsoil</i>	Red gravels and sands
<i>Finds</i>	None

Trench 15

<i>Dimensions</i>	100 m by 2 m
<i>Orientation</i>	North-west to south-east
<i>Depth of Topsoil</i>	0.30-0.40 m
<i>Depth of excavation</i>	0.50 m
<i>Significant Features</i>	None
<i>Modern</i>	None
<i>Subsoil</i>	Red gravels and sands
<i>Finds</i>	None

Trench 16

<i>Dimensions</i>	50 m by 2 m
<i>Orientation</i>	North to south
<i>Depth of Topsoil</i>	0.25 m
<i>Depth of excavation</i>	0.30 m
<i>Significant Features</i>	None
<i>Modern</i>	None
<i>Subsoil</i>	Red gravels and sands
<i>Finds</i>	None

Trench 17

<i>Dimensions</i>	100 m by 2 m
<i>Orientation</i>	North-west to south-east
<i>Depth of Topsoil</i>	0.30-0.40 m
<i>Depth of excavation</i>	0.50 m
<i>Significant Features</i>	None
<i>Modern</i>	None
<i>Subsoil</i>	Red gravels and sands
<i>Finds</i>	None

Trench 18

<i>Dimensions</i>	100 m by 2 m
<i>Orientation</i>	North-west to south-east
<i>Depth of Topsoil</i>	0.30 m
<i>Depth of excavation</i>	0.40 m
<i>Significant Features</i>	None
<i>Modern</i>	None
<i>Subsoil</i>	Red gravels and sands
<i>Finds</i>	None

Trench 19

<i>Dimensions</i>	100 m by 2 m
<i>Orientation</i>	North to south
<i>Depth of Topsoil</i>	0.25-0.30 m
<i>Depth of excavation</i>	0.40 m
<i>Significant Features</i>	None
<i>Modern</i>	None
<i>Subsoil</i>	Red gravels and sands and protruding bedrock
<i>Finds</i>	None

Trench 20

<i>Dimensions</i>	80 m by 2 m
<i>Orientation</i>	North-east to south-west
<i>Depth of Topsoil</i>	0.30-0.40 m
<i>Depth of excavation</i>	0.50 m
<i>Significant Features</i>	None
<i>Modern</i>	Rubble drains
<i>Subsoil</i>	Red gravels and sands
<i>Finds</i>	None

Trench 21

<i>Dimensions</i>	50 m by 2 m
<i>Orientation</i>	North-east to south-west
<i>Depth of Topsoil</i>	0.30 m
<i>Depth of excavation</i>	0.40 m
<i>Significant Features</i>	None
<i>Modern</i>	None
<i>Subsoil</i>	Red gravels and sands
<i>Finds</i>	None

Trench 22

<i>Dimensions</i>	100 m by 2 m
<i>Orientation</i>	North-east to south-west
<i>Depth of Topsoil</i>	0.30-0.40 m
<i>Depth of excavation</i>	0.50 m
<i>Significant Features</i>	None
<i>Modern</i>	Rubble drains
<i>Subsoil</i>	Red gravels and sands
<i>Finds</i>	None

Trench 23

<i>Dimensions</i>	50 m by 2 m
<i>Orientation</i>	North-west to south-east
<i>Depth of Topsoil</i>	0.30-0.40 m
<i>Depth of excavation</i>	0.50 m
<i>Significant Features</i>	None
<i>Modern</i>	Rubble drains
<i>Subsoil</i>	Red gravels and sands
<i>Finds</i>	None

Trench 24

<i>Dimensions</i>	100 m by 2 m
<i>Orientation</i>	North to south
<i>Depth of Topsoil</i>	0.30-0.40 m
<i>Depth of excavation</i>	0.50 m
<i>Significant Features</i>	None
<i>Modern</i>	None
<i>Subsoil</i>	Red gravels and sands; bedrock encountered
<i>Finds</i>	None

Trench 25

<i>Dimensions</i>	100 m by 2 m
<i>Orientation</i>	North to south
<i>Depth of Topsoil</i>	0.25 m
<i>Depth of excavation</i>	0.30 m
<i>Significant Features</i>	None
<i>Modern</i>	Rubble drains
<i>Subsoil</i>	Red gravels and sands
<i>Finds</i>	None

Trench 26

<i>Dimensions</i>	50 m by 2 m
<i>Orientation</i>	North to south
<i>Depth of Topsoil</i>	0.30-0.40 m
<i>Depth of excavation</i>	0.50 m
<i>Significant Features</i>	None
<i>Modern</i>	None
<i>Subsoil</i>	Red gravels and sands; bedrock encountered
<i>Finds</i>	None

Trench 27

<i>Dimensions</i>	100 m by 2 m
<i>Orientation</i>	North to south
<i>Depth of Topsoil</i>	0.30-0.40 m
<i>Depth of excavation</i>	0.50 m
<i>Significant Features</i>	None
<i>Modern</i>	Rubble drains
<i>Subsoil</i>	Red gravels and sands
<i>Finds</i>	None

Trench 28

<i>Dimensions</i>	55 m by 2 m
<i>Orientation</i>	North to south
<i>Depth of Topsoil</i>	0.30-0.40 m
<i>Depth of excavation</i>	0.50 m
<i>Significant Features</i>	None
<i>Modern</i>	None
<i>Subsoil</i>	Clay and sands
<i>Finds</i>	None

Trench 29

<i>Dimensions</i>	100 m by 2 m
<i>Orientation</i>	North to south
<i>Depth of Topsoil</i>	0.30-0.40 m
<i>Depth of excavation</i>	0.50 m
<i>Significant Features</i>	None
<i>Modern</i>	None
<i>Subsoil</i>	Red gravels and sands
<i>Finds</i>	None

Trench 30

<i>Dimensions</i>	100 m by 2 m
<i>Orientation</i>	East to west
<i>Depth of Topsoil</i>	0.25-0.30 m
<i>Depth of excavation</i>	0.35 m
<i>Significant Features</i>	None
<i>Modern</i>	Rubble drains
<i>Subsoil</i>	Red gravels and sands
<i>Finds</i>	None

Trench 31

<i>Dimensions</i>	100 m by 2 m
<i>Orientation</i>	North-east to south-west
<i>Depth of Topsoil</i>	0.25-0.30 m
<i>Depth of excavation</i>	0.40 m
<i>Significant Features</i>	None
<i>Modern</i>	None
<i>Subsoil</i>	Red gravels and sands
<i>Finds</i>	None

Trench 32

<i>Dimensions</i>	53 m by 2 m
<i>Orientation</i>	North to south
<i>Depth of Topsoil</i>	0.25-0.35 m
<i>Depth of excavation</i>	0.40 m
<i>Significant Features</i>	None
<i>Modern</i>	None
<i>Subsoil</i>	Red gravels and sands
<i>Finds</i>	None

Trench 33

<i>Dimensions</i>	100 m by 2 m
<i>Orientation</i>	North-east to south-west
<i>Depth of Topsoil</i>	0.25-0.35 m
<i>Depth of excavation</i>	0.40 m
<i>Significant Features</i>	None
<i>Modern</i>	None
<i>Subsoil</i>	Red gravels and sands
<i>Finds</i>	None

Trench 34

<i>Dimensions</i>	60 m by 2 m
<i>Orientation</i>	North-east to south-west
<i>Depth of Topsoil</i>	0.30 m
<i>Depth of excavation</i>	0.35 m
<i>Significant Features</i>	None
<i>Modern</i>	None
<i>Subsoil</i>	Red gravels and sands
<i>Finds</i>	None

Trench 35

<i>Dimensions</i>	105 m by 2 m, plus an 10 m by 10 m extension around the features
<i>Orientation</i>	East to west
<i>Depth of Topsoil</i>	0.25-30 m
<i>Depth of excavation</i>	0.40 m
<i>Significant Features</i>	Three irregular pits [3502], [3504] and [3506], varying in size and shape and all containing charcoal and burnt bone.
<i>Modern</i>	None
<i>Subsoil</i>	Red gravels and sands
<i>Finds</i>	None

Trench 36

<i>Dimensions</i>	100 m by 2 m
<i>Orientation</i>	North-west to south-east
<i>Depth of Topsoil</i>	0.20-0.40 m
<i>Depth of excavation</i>	0.50 m
<i>Significant Features</i>	None
<i>Modern</i>	None
<i>Subsoil</i>	Red gravels and sands
<i>Finds</i>	None

Trench 37

<i>Dimensions</i>	100 m by 2 m
<i>Orientation</i>	East to west
<i>Depth of Topsoil</i>	0.30-0.40 m
<i>Depth of excavation</i>	0.50 m
<i>Significant Features</i>	None
<i>Modern</i>	None
<i>Subsoil</i>	Red gravels and sands
<i>Finds</i>	None

Trench 38

<i>Dimensions</i>	50 m by 2 m
<i>Orientation</i>	North-west to south-east
<i>Depth of Topsoil</i>	0.30-0.40 m
<i>Depth of excavation</i>	0.50 m
<i>Significant Features</i>	None
<i>Modern</i>	None
<i>Subsoil</i>	Red gravels and sands
<i>Finds</i>	None

Trench 39

<i>Dimensions</i>	100 m by 2 m
<i>Orientation</i>	North-west to south-east
<i>Depth of Topsoil</i>	0.30-0.40 m
<i>Depth of excavation</i>	0.50 m
<i>Significant Features</i>	None
<i>Modern</i>	None
<i>Subsoil</i>	Red gravels and sands
<i>Finds</i>	None

Trench 40

<i>Dimensions</i>	100 m by 2 m
<i>Orientation</i>	East to west
<i>Depth of Topsoil</i>	0.45 m
<i>Depth of excavation</i>	0.50 m
<i>Significant Features</i>	None
<i>Modern</i>	None
<i>Subsoil</i>	Red gravels and sands
<i>Finds</i>	None

Trench 41

<i>Dimensions</i>	100 m by 2 m
<i>Orientation</i>	East to west
<i>Depth of Topsoil</i>	0.30-0.40 m
<i>Depth of excavation</i>	0.50 m
<i>Significant Features</i>	None
<i>Modern</i>	None
<i>Subsoil</i>	Red gravels and sands
<i>Finds</i>	None

Trench 42

<i>Dimensions</i>	100 m by 2 m
<i>Orientation</i>	North to south
<i>Depth of Topsoil</i>	0.30-0.40 m
<i>Depth of excavation</i>	0.50 m
<i>Significant Features</i>	None
<i>Modern</i>	None
<i>Subsoil</i>	Red gravels and sands
<i>Finds</i>	None

Trench 43

<i>Dimensions</i>	50 m by 2 m
<i>Orientation</i>	North-west to south-east
<i>Depth of Topsoil</i>	0.30-0.40 m
<i>Depth of excavation</i>	0.50 m
<i>Significant Features</i>	None
<i>Modern</i>	None
<i>Subsoil</i>	Red gravels and sands
<i>Finds</i>	None

Trench 44

<i>Dimensions</i>	100 m by 2 m
<i>Orientation</i>	North-east to south-west
<i>Depth of Topsoil</i>	0.30-0.40 m
<i>Depth of excavation</i>	0.50 m
<i>Significant Features</i>	None
<i>Modern</i>	None
<i>Subsoil</i>	Red gravels and sands
<i>Finds</i>	None

Trench 45

<i>Dimensions</i>	100 m by 2 m
<i>Orientation</i>	North to south
<i>Depth of Topsoil</i>	0.30-0.40 m
<i>Depth of excavation</i>	0.50 m
<i>Significant Features</i>	None
<i>Modern</i>	None
<i>Subsoil</i>	Red gravels and sands
<i>Finds</i>	None

Trench 46

<i>Dimensions</i>	50 m by 2 m
<i>Orientation</i>	North to south
<i>Depth of Topsoil</i>	0.30-0.40 m
<i>Depth of excavation</i>	0.50 m
<i>Significant Features</i>	None
<i>Modern</i>	None
<i>Subsoil</i>	Red gravels and sands
<i>Finds</i>	None

Trench 47

<i>Dimensions</i>	50 m by 2 m
<i>Orientation</i>	North-west to south-east
<i>Depth of Topsoil</i>	0.30-0.40 m
<i>Depth of excavation</i>	0.50 m
<i>Significant Features</i>	None
<i>Modern</i>	None
<i>Subsoil</i>	Red gravels and sands
<i>Finds</i>	None

Trench 48

<i>Dimensions</i>	50 m by 2 m
<i>Orientation</i>	North-west to south-east
<i>Depth of Topsoil</i>	0.30-0.40 m
<i>Depth of excavation</i>	0.50 m
<i>Significant Features</i>	None
<i>Modern</i>	None
<i>Subsoil</i>	Red gravels and sands
<i>Finds</i>	None

Trench 49

<i>Dimensions</i>	105 m by 2 m
<i>Orientation</i>	North to south
<i>Depth of Topsoil</i>	0.25 m
<i>Depth of excavation</i>	0.30 m
<i>Significant Features</i>	None
<i>Modern</i>	None
<i>Subsoil</i>	Red gravels and sands
<i>Finds</i>	None

Trench 50

<i>Dimensions</i>	105 m by 2 m
<i>Orientation</i>	North to south
<i>Depth of Topsoil</i>	0.30-0.40 m
<i>Depth of excavation</i>	0.50 m
<i>Significant Features</i>	None
<i>Modern</i>	None
<i>Subsoil</i>	Red gravels and sands
<i>Finds</i>	None

Trench 51

<i>Dimensions</i>	100 m by 2 m
<i>Orientation</i>	East to west
<i>Depth of Topsoil</i>	0.30-0.40 m
<i>Depth of excavation</i>	0.50 m
<i>Significant Features</i>	None
<i>Modern</i>	Rubble drains
<i>Subsoil</i>	Red gravels and sands
<i>Finds</i>	None

Trench 52

<i>Dimensions</i>	100 m by 2 m
<i>Orientation</i>	North-west to south-east
<i>Depth of Topsoil</i>	0.30-0.40 m
<i>Depth of excavation</i>	0.50 m
<i>Significant Features</i>	None
<i>Modern</i>	None
<i>Subsoil</i>	Red gravels and sands
<i>Finds</i>	None

Trench 53

<i>Dimensions</i>	100 m by 2 m
<i>Orientation</i>	North to south
<i>Depth of Topsoil</i>	0.30-0.40 m
<i>Depth of excavation</i>	0.50 m
<i>Significant Features</i>	None
<i>Modern</i>	None
<i>Subsoil</i>	Red gravels and sands
<i>Finds</i>	None

Trench 54

<i>Dimensions</i>	50 m by 2 m
<i>Orientation</i>	North-west to south-east
<i>Depth of Topsoil</i>	0.30-0.40 m
<i>Depth of excavation</i>	0.50 m
<i>Significant Features</i>	None
<i>Modern</i>	None
<i>Subsoil</i>	Red gravels and sands
<i>Finds</i>	None

Trench 55

<i>Dimensions</i>	100 m by 2 m
<i>Orientation</i>	North-west to south-east
<i>Depth of Topsoil</i>	0.25 m
<i>Depth of excavation</i>	0.30 m
<i>Significant Features</i>	None
<i>Modern</i>	None
<i>Subsoil</i>	Red gravels and sands
<i>Finds</i>	None

Trench 56

<i>Dimensions</i>	50 m by 2 m
<i>Orientation</i>	North-west to south-east
<i>Depth of Topsoil</i>	0.24-0.45 m
<i>Depth of excavation</i>	0.50 m
<i>Significant Features</i>	None
<i>Modern</i>	None
<i>Subsoil</i>	Red gravels and sands
<i>Finds</i>	None

Trench 57

<i>Dimensions</i>	100 m by 2 m
<i>Orientation</i>	North-west to south-east
<i>Depth of Topsoil</i>	0.30-0.40 m
<i>Depth of excavation</i>	0.50 m
<i>Significant Features</i>	None
<i>Modern</i>	None
<i>Subsoil</i>	Red gravels and sands
<i>Finds</i>	None

Trench 58

<i>Dimensions</i>	100 m by 2 m
<i>Orientation</i>	North-east to south-west
<i>Depth of Topsoil</i>	0.30 m
<i>Depth of excavation</i>	0.35 m
<i>Significant Features</i>	None
<i>Modern</i>	None
<i>Subsoil</i>	Red gravels and sands
<i>Finds</i>	None

Trench 59

<i>Dimensions</i>	50 m by 2 m
<i>Orientation</i>	North to south
<i>Depth of Topsoil</i>	0.30 m
<i>Depth of excavation</i>	0.40 m
<i>Significant Features</i>	None
<i>Modern</i>	None
<i>Subsoil</i>	Red gravels and sands
<i>Finds</i>	None

Trench 60

<i>Dimensions</i>	100 m by 2 m
<i>Orientation</i>	North-east to south-west
<i>Depth of Topsoil</i>	0.30 m
<i>Depth of excavation</i>	0.40 m
<i>Significant Features</i>	None
<i>Modern</i>	Rubble drains
<i>Subsoil</i>	Red gravels and sands
<i>Finds</i>	None

Trench 61

<i>Dimensions</i>	50 m by 2 m
<i>Orientation</i>	North to south
<i>Depth of Topsoil</i>	0.30 m
<i>Depth of excavation</i>	0.35 m
<i>Significant Features</i>	None
<i>Modern</i>	None
<i>Subsoil</i>	Red gravels and sands
<i>Finds</i>	None

Trench 63

<i>Dimensions</i>	100 m by 2 m
<i>Orientation</i>	North-east to south-west
<i>Depth of Topsoil</i>	0.30 m
<i>Depth of excavation</i>	0.40 m
<i>Significant Features</i>	None
<i>Modern</i>	None
<i>Subsoil</i>	Red gravels and sands
<i>Finds</i>	None

Trench 64

<i>Dimensions</i>	100 m by 2 m
<i>Orientation</i>	North-east to south-west
<i>Depth of Topsoil</i>	0.30 m
<i>Depth of excavation</i>	0.40 m
<i>Significant Features</i>	None
<i>Modern</i>	None
<i>Subsoil</i>	Red gravels and sands
<i>Finds</i>	None

Trench 65

<i>Dimensions</i>	100 m by 2 m
<i>Orientation</i>	North-east to south-west
<i>Depth of Topsoil</i>	0.30 m
<i>Depth of excavation</i>	0.40 m
<i>Significant Features</i>	None
<i>Modern</i>	None
<i>Subsoil</i>	Red gravels and sands
<i>Finds</i>	None

Trench 66

<i>Dimensions</i>	50 m by 2 m
<i>Orientation</i>	North to south
<i>Depth of Topsoil</i>	0.30 m
<i>Depth of excavation</i>	0.40 m
<i>Significant Features</i>	None
<i>Modern</i>	None
<i>Subsoil</i>	Red gravels and sands
<i>Finds</i>	None

Trench 67

<i>Dimensions</i>	50 m by 2 m
<i>Orientation</i>	North to south
<i>Depth of Topsoil</i>	0.30-0.40 m
<i>Depth of excavation</i>	0.50 m
<i>Significant Features</i>	None
<i>Modern</i>	None
<i>Subsoil</i>	Red gravels and sands
<i>Finds</i>	None

Trench 68

<i>Dimensions</i>	50 m by 2 m
<i>Orientation</i>	North-west to south-east
<i>Depth of Topsoil</i>	0.35m
<i>Depth of excavation</i>	0.40 m
<i>Significant Features</i>	None
<i>Modern</i>	None
<i>Subsoil</i>	Red gravels and sands
<i>Finds</i>	None

Trench 69

<i>Dimensions</i>	50 m by 2 m
<i>Orientation</i>	North-west to south-east
<i>Depth of Topsoil</i>	0.40 m
<i>Depth of excavation</i>	0.50 m
<i>Significant Features</i>	None
<i>Modern</i>	None
<i>Subsoil</i>	Red gravels and sands
<i>Finds</i>	None

Trench 70

<i>Dimensions</i>	100 m by 2 m
<i>Orientation</i>	East to west
<i>Depth of Topsoil</i>	0.30 m
<i>Depth of excavation</i>	0.40 m
<i>Significant Features</i>	None
<i>Modern</i>	Rubble drain
<i>Subsoil</i>	Red gravels and sands
<i>Finds</i>	None

Trench 71

<i>Dimensions</i>	50 m by 2 m
<i>Orientation</i>	North-west to south-east
<i>Depth of Topsoil</i>	0.30 m
<i>Depth of excavation</i>	0.40 m
<i>Significant Features</i>	None
<i>Modern</i>	None
<i>Subsoil</i>	Red gravels and sands
<i>Finds</i>	None

Trench 72

<i>Dimensions</i>	100 m by 2 m
<i>Orientation</i>	North-west to south-east
<i>Depth of Topsoil</i>	0.25 m
<i>Depth of excavation</i>	0.30 m
<i>Significant Features</i>	None
<i>Modern</i>	None
<i>Subsoil</i>	Red gravels and sands
<i>Finds</i>	None

Trench 73

<i>Dimensions</i>	100 m by 2 m
<i>Orientation</i>	North to south
<i>Depth of Topsoil</i>	0.30-0.40 m
<i>Depth of excavation</i>	0.50 m
<i>Significant Features</i>	None
<i>Modern</i>	None
<i>Subsoil</i>	Red gravels and sands
<i>Finds</i>	None

Trench 74

<i>Dimensions</i>	100 m by 2 m
<i>Orientation</i>	North to south
<i>Depth of Topsoil</i>	0.30 m
<i>Depth of excavation</i>	0.35 m
<i>Significant Features</i>	None
<i>Modern</i>	None
<i>Subsoil</i>	Red gravels and sands
<i>Finds</i>	None

Trench 75

<i>Dimensions</i>	100 m by 2 m
<i>Orientation</i>	North-west to south-east
<i>Depth of Topsoil</i>	0.30-0.40 m
<i>Depth of excavation</i>	0.50 m
<i>Significant Features</i>	None
<i>Modern</i>	None
<i>Subsoil</i>	Red gravels and sands
<i>Finds</i>	None

Trench 76

<i>Dimensions</i>	100 m by 2 m
<i>Orientation</i>	North to south
<i>Depth of Topsoil</i>	0.30 m
<i>Depth of excavation</i>	0.35 m
<i>Significant Features</i>	None
<i>Modern</i>	None
<i>Subsoil</i>	Red gravels and sands
<i>Finds</i>	None

Trench 77

<i>Dimensions</i>	100 m by 2 m
<i>Orientation</i>	North to south
<i>Depth of Topsoil</i>	0.30-0.40 m
<i>Depth of excavation</i>	0.50 m
<i>Significant Features</i>	None
<i>Modern</i>	None
<i>Subsoil</i>	Red gravels and sands
<i>Finds</i>	None

Trench 78

<i>Dimensions</i>	50 m by 2 m
<i>Orientation</i>	North to south
<i>Depth of Topsoil</i>	0.30-0.40 m
<i>Depth of excavation</i>	0.50 m
<i>Significant Features</i>	None
<i>Modern</i>	None
<i>Subsoil</i>	Red gravels and sands
<i>Finds</i>	None

Trench 79

<i>Dimensions</i>	100 m by 2 m
<i>Orientation</i>	North to south
<i>Depth of Topsoil</i>	0.30-0.40 m
<i>Depth of excavation</i>	0.50 m
<i>Significant Features</i>	Possible ditch cut [7902], filled by [7901] 26 m from north end, only visible on first day
<i>Modern</i>	None
<i>Subsoil</i>	Red gravels and sands

<i>Finds</i>	None
Trench 80	
<i>Dimensions</i>	100 m by 2 m
<i>Orientation</i>	North to south
<i>Depth of Topsoil</i>	0.30-0.40 m
<i>Depth of excavation</i>	0.50 m
<i>Significant Features</i>	Possible ditch 40 m from northern end comprising 3 m wide cut [8002], filled by [8001].
<i>Modern</i>	None
<i>Subsoil</i>	Red gravels and sands
<i>Finds</i>	None
Trench 81	
<i>Dimensions</i>	100 m by 2 m
<i>Orientation</i>	North to south
<i>Depth of Topsoil</i>	0.30-0.40 m
<i>Depth of excavation</i>	0.50 m
<i>Significant Features</i>	Ditch 42 m from northern end comprising a cut [8102] filled by [8801].
<i>Modern</i>	None
<i>Subsoil</i>	Red gravels and sands
<i>Finds</i>	None
Trench 82	
<i>Dimensions</i>	100 m by 2 m
<i>Orientation</i>	North-east to south-west
<i>Depth of Topsoil</i>	0.30-0.40 m
<i>Depth of excavation</i>	0.50 m
<i>Significant Features</i>	None
<i>Modern</i>	None
<i>Subsoil</i>	Red gravels and sands
<i>Finds</i>	None
Trench 83	
<i>Dimensions</i>	100 m by 2 m
<i>Orientation</i>	North-east to south-west
<i>Depth of Topsoil</i>	0.30-0.40 m
<i>Depth of excavation</i>	0.50 m
<i>Significant Features</i>	None
<i>Modern</i>	None
<i>Subsoil</i>	Red gravels and sands
<i>Finds</i>	None
Trench 84	
<i>Dimensions</i>	100 m by 2 m
<i>Orientation</i>	North-east to south-west
<i>Depth of Topsoil</i>	0.30-0.40 m
<i>Depth of excavation</i>	0.50 m
<i>Significant Features</i>	None
<i>Modern</i>	None
<i>Subsoil</i>	Red gravels and sands
<i>Finds</i>	None
Trench 85	
<i>Dimensions</i>	50 m by 2 m
<i>Orientation</i>	North-west to south-east
<i>Depth of Topsoil</i>	0.30-0.40 m
<i>Depth of excavation</i>	0.50 m
<i>Significant Features</i>	None
<i>Modern</i>	None
<i>Subsoil</i>	Red gravels and sands

<i>Finds</i>	None
Trench 86	
<i>Dimensions</i>	100 m by 2 m
<i>Orientation</i>	North-west to south-east
<i>Depth of Topsoil</i>	0.30-0.40 m
<i>Depth of excavation</i>	0.50 m
<i>Significant Features</i>	
<i>Modern</i>	None
<i>Subsoil</i>	Red gravels and sands
<i>Finds</i>	None
Trench 87	
<i>Dimensions</i>	100 m by 2 m
<i>Orientation</i>	North-west to south-east
<i>Depth of Topsoil</i>	0.30-0.40 m
<i>Depth of excavation</i>	0.50 m
<i>Significant Features</i>	None
<i>Modern</i>	None
<i>Subsoil</i>	Red gravels and sands
<i>Finds</i>	None
Trench 88	
<i>Dimensions</i>	100 m by 2 m
<i>Orientation</i>	North-west to south-east
<i>Depth of Topsoil</i>	0.30-0.40 m
<i>Depth of excavation</i>	0.50 m
<i>Significant Features</i>	Possible ditch feature identified 18 m from eastern end comprising 3 m wide cut [8802] filled by [8801]; ditch cut 54 m from eastern end comprising cut [8804] and filled by [8803]; possible palisade cut [8805] filled by [8806] and a possible slot [8807] filled by [8808].
<i>Modern</i>	None
<i>Subsoil</i>	Red gravels and sands
<i>Finds</i>	None
Trench 89	
<i>Dimensions</i>	50 m by 2 m
<i>Orientation</i>	East to west
<i>Depth of Topsoil</i>	0.30-0.40 m
<i>Depth of excavation</i>	0.50 m
<i>Significant Features</i>	None
<i>Modern</i>	None
<i>Subsoil</i>	Red gravels and sands
<i>Finds</i>	None
Trench 90	
<i>Dimensions</i>	100 m by 2 m
<i>Orientation</i>	East to west
<i>Depth of Topsoil</i>	0.30-0.40 m
<i>Depth of excavation</i>	0.50 m
<i>Significant Features</i>	None
<i>Modern</i>	None
<i>Subsoil</i>	Red gravels and sands
<i>Finds</i>	None
Trench 91	
<i>Dimensions</i>	100 m by 2 m
<i>Orientation</i>	East to west
<i>Depth of Topsoil</i>	0.30-0.40 m
<i>Depth of excavation</i>	0.50 m
<i>Significant Features</i>	None

Easter Langlee, Galashiels Evaluation: Data Structure Report

<i>Modern</i>	None
<i>Subsoil</i>	Red gravels and sands
<i>Finds</i>	None

Trench 92

<i>Dimensions</i>	50 m by 2 m
<i>Orientation</i>	East to west
<i>Depth of Topsoil</i>	0.30 m
<i>Depth of excavation</i>	0.35 m
<i>Significant Features</i>	None
<i>Modern</i>	None
<i>Subsoil</i>	Red gravels and sands
<i>Finds</i>	None

APPENDIX 2: PHOTOGRAPHIC RECORD

Evaluation Black & White Print 1

Frame	Detail	From
1-2	Registration	
3-4	Detail of horse burial, Tr.34	N
5-6	South-facing section through pit [3504]	S
7-8	South-facing section through pit [3502]	S
9-10	Post-excavation shot of pit [3504]	SW
11-12	Post-excavation shot of pit [3502]	S
13-14	West-facing section through pit [3506]	W
15-16	Detail of possible ditch [8802]	S
17-27	Detail of south facing section through ditch [8802]	S
28-29	Post-excavation detail of ditch [8802]	SE
30-31	Post-excavation detail of ditch [8802]	S
32-33	Detail of feature [8808]	W
34-35	Detail of possible ditch [8804]	E

Evaluation Black & White Print 2

Frame	Detail	From
1-2	Registration	
3-4	Detail of possible ditch [8804]	E
5-6	Detail of possible ditch [8102]	N
7-8	General shot of Tr.13	NW
9-10	General shot of Tr.8	SW
11-12	General shot of Tr.16	S
13-14	General shot of Tr.15	W
15-16	General shot of Tr.35	N
17-20	General shot of backfilled Trenches	Var

APPENDIX 3: CONTEXT DESCRIPTIONS

No.	Type	Description
001	Topsoil	Topsoil comprising loose dark grey silty sand with frequent stone inclusions. Very little modern material/inclusions.
002	B-Horizon	B-horizon comprising a grey brown slightly silty sand, with frequent stone inclusions, 0.04-0.09 m in depth.
003	Natural	Natural subsoil comprising compact yellow orange and red sands, gravels and clays.
3501	Fill	Fill of cut [3502], comprising brown grey silty sand with frequent inclusions of angular stone, charcoal and fragments of bone.
3502	Cut	Circular cut, with uneven sides running in to a concave base. Heavily truncated. Measuring 0.50 m by 0.12 m in depth.
3503	Fill	Fill of cut [3504], comprising a dark brown grey sandy silty clay, with frequent inclusions of charcoal, bone and angular stone. Heavily truncated.
3504	Cut	Sub-circular shaped cut, with uneven steep sides running in to a concave base. Measuring 0.55 m by 0.22 m in depth.
3505		Void
3506	Cut	Circular shaped cut, with a sharp break at top with steep sides running in to a concave base. Measuring 0.70 m by 0.46 m in depth. Filled by [3507] and [3508].
3507	Fill	Fill of cut [3506], comprising a loose brown, yellow sandy clay and gravel, 0.52 m by 0.15 m in depth. Overlying [3508].
3508		Lower fill of cut [3506], comprising a dark blackish grey sandy clay with frequent inclusions of charcoal, burnt bone, angular stone and gravel. Measuring 0.31 m in depth. Underlying [3507].
8001	Fill	Fill of possible ditch feature cut [8002]. Unexcavated.
8002	Cut	Cut of possible ditch feature running east to west across the trench, measuring approximately 3 m in length. Unexcavated.
8101	Fill	Fill of possible ditch [8102] aligned north to south across the trench. Unexcavated.
8102	Cut	Cut of possible ditch aligned north to south across trench, measuring 2.60 m in width. Unexcavated.
8103	Fill	Fill of possible ditch cut [8104] aligned north to south across trench. Unexcavated.
8104	Cut	Cut of possible ditch feature measuring approximately 4 m in width. Unexcavated.
8601	Fill	Fill of possible ditch feature cut [8602], aligned north to south across the trench. Unexcavated.
8602	Cut	Cut of possible ditch feature measuring 4 m in width. Unexcavated.
8801	Fill	Single fill of ditch cut [8802], comprising a dark brown loamy soil, very loose in composition, with frequent angular stone inclusions.
8802	Cut	Cut of ditch feature, with steep sides running in to a flat base, measuring up to 1.19 m in depth by 3.16 m in width. North to south aligned.
8803	Fill	Fill of possible internal ditch feature [8804]. Unexcavated.
8804	Cut	Cut of possible internal ditch feature, measuring 4.60 m in width. Unexcavated.
8805	Cut	Cut of possible a curving palisade/groove feature, aligned north to south, measuring 9.77 m by 0.30 m (where visible). Internal to both ditches [8802] and [8804].
8806	Fill	Fill of cut [8805], comprising a loamy sand with frequent angular stone inclusions.
8807	Fill	Fill of possible palisade slot [8808] aligned north to south across the trench. Unexcavated.
8808		Cut of possible palisade slot, external to both ditches [8802] and [8804].

APPENDIX 4: SAMPLE REGISTER

Context No.	Area	No. of Bags
3501	Tr.35	2
3503	Tr.35	2
3508	Tr.35	2
8001	Tr.80	2

APPENDIX 5: DRAWING REGISTER

Drawing No.	Area	Feature No.	Description	Scale
1	Tr.35	35004	South facing section through feature	1:10
2	Tr.35	35002	Plan of set of three pits	1:50
3	Tr.35	35002	West facing section through feature	1:10
4	Tr.35	35006	North-west facing section through feature	1:10
5	Tr.88	8802	South facing section through ditch cut	1:10
6	Tr.88	8802	Plan of ditch cut	1:50
7	Tr.80	8002	Plan of trench	1:50
8	Tr.81	Var	Plan of trench	1:50
9	Tr.86	8602	Plan of possible ditch	1:50
10	Tr.88	Var	Plan of various features	1:50

APPENDIX 6: DISCOVERY AND EXCAVATION IN SCOTLAND REPORT

LOCAL AUTHORITY:	Scottish Borders
PROJECT TITLE/SITE NAME:	Easter Langlee, Galashiels
PROJECT CODE:	AOC 20825
PARISH:	Galashiels
NAME OF CONTRIBUTOR:	Martin Cook
NAME OF ORGANISATION:	AOC Archaeology Group
TYPE(S) OF PROJECT:	Archaeological evaluation
NMRS NO(S):	NT53NW 5
SITE/MONUMENT TYPE(S):	Enclosure
SIGNIFICANT FINDS:	Three pits and evidence for enclosure
NGR (2 letters, 6 figures)	NT 5220 3580
START DATE (this season)	3 rd December 2007
END DATE (this season)	14 th December 2007
PREVIOUS WORK (incl. <i>DES</i> ref.)	None
MAIN (NARRATIVE) DESCRIPTION: (May include information from other fields)	<p>A 7 % sample archaeological evaluation was undertaken in advance of a residential development at Easter Langlee, Galashiels. In total 88 trenches comprising 15,210 m² of trenching (7% sample size) was excavated.</p> <p>A possible prehistoric enclosure (NT53NW 57), previously recognised on Aerial Photographs was identified within the proposed development. The enclosure was identified during the evaluation and comprised an approximate 3-4 m wide by 1.20 m deep ditch. A second, internal ditch was identified within the eastern part of the enclosure, as were two possible palisade slots.</p> <p>Elsewhere, approximately 500 m to the south-east of the enclosure (at NGR: NT 5206 3560) three previously unknown pits, of varying shape, size and form were identified and subsequently fully excavated. All three pits were found to contain large amounts of burnt bone and charcoal.</p>
PROPOSED FUTURE WORK:	To be confirmed
CAPTION(S) FOR ILLUSTRS:	
SPONSOR OR FUNDING BODY:	Persimmon Homes
ADDRESS OF MAIN CONTRIBUTOR:	Edgefield Road Industrial Estate, Loanhead, Midlothian, EH20 9SY
EMAIL ADDRESS:	Martin.Cook@aocarchaeology.com
ARCHIVE LOCATION	Archive to be deposited in NMRS