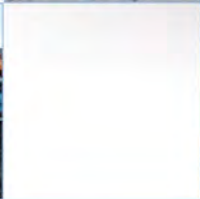
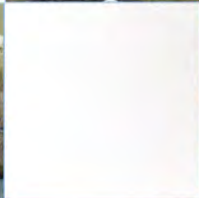


# Eliburn Park, Livingston, West Lothian: Archaeological Evaluation Data Structure Report

21002  
May 2008



ARCHAEOLOGY

HERITAGE

CONSERVATION

# Eliburn Park, Livingston, West Lothian Archaeological Evaluation

## Data Structure Report

<b>On Behalf of:</b>	<b>West Lothian Council Property Services,</b> Lammermuir House Owen Square Almondvale Livingston West Lothian EH54 6PW
<b>National Grid Reference (NGR):</b>	<b>NT 0310 6802</b>
<b>AOC Project No:</b>	<b>21002</b>
<b>Prepared by:</b>	<b>Alan Duffy</b>
<b>Illustration by:</b>	<b>Graeme Carruthers</b>
<b>Date of Fieldwork:</b>	<b>May 2008</b>
<b>Date of Report:</b>	<b>June 2008</b>

This document has been prepared in accordance with AOC standard operating procedures.

**Author:** Alan Duffy **Date:** 3<sup>rd</sup> June 2008

**Approved by:** John Gooder **Date:** 3<sup>rd</sup> June 2008

**Draft Report Stage:** **Date:** 3<sup>rd</sup> June 2008

**Enquiries to:** AOC Archaeology Group  
Edgefield Industrial Estate  
Edgefield Road  
Loanhead  
EH20 9SY

Tel. 0131 440 3593  
Fax. 0131 440 3422  
e-mail. [admin@aocarchaeology.com](mailto:admin@aocarchaeology.com)



[www.aocarchaeology.com](http://www.aocarchaeology.com)

## Contents

	Page
List of illustrations .....	2
List of appendices.....	2
Abstract.....	3
0. NON TECHNICAL SUMMARY.....	4
1. INTRODUCTION .....	4
1.1 Site Location .....	4
1.2 Archaeological background .....	4
2. OBJECTIVES.....	4
3. METHOD .....	4
4. RESULTS .....	5
4.1 Introduction .....	5
4.2 Overview .....	5
5. DISCUSSION .....	5
6. CONCLUSION.....	6
7. REFERENCES .....	6
APPENDIX 1: TRENCH SUMMARIES.....	7
APPENDIX 2: PHOTOGRAPHIC REGISTER .....	14
APPENDIX 3: DISCOVERY AND EXCAVATION IN SCOTLAND REPORT .....	15

## List of illustrations

Figure 1 Site location

Figure 2 Plan showing position of trenches within evaluation area

## List of appendices

Appendix 1 Trench summaries

Appendix 2 Photographic Register

Appendix 3 DES entry

## Abstract

---

AOC Archaeology Group was commissioned by West Lothian Council Property Services Department to undertake a programme of archaeological works within the site of a proposed recreational development at Eliburn Park, Livingston, West Lothian. In total 36 totalling 3,810 m<sup>2</sup> were opened, representing just over an 8% sample of the 4.73 development area. The greenfield site proved to be archaeologically sterile with no significant features or artefactual material uncovered by the evaluation.

## 0. NON TECHNICAL SUMMARY

- 0.1 AOC Archaeology Group was commissioned by West Lothian Council Property Services Department to undertake a programme of archaeological works within the site of a proposed recreational development at Eliburn Park, Livingston, West Lothian. The work was required in response to a planning condition set by West Lothian Council (Planning ref: 01200/FUL/07).
- 0.2 West Lothian Council is advised on archaeological matters by the West of Scotland Archaeology Service (WoSAS) who recommended an intrusive archaeological evaluation of the proposed development. The work was required in accordance with NPPG 5 (SOEnd 1994) and PAN 42 (SOEnd 1994a), in order to determine the nature, extent, condition, date and significance of any archaeological remains within the proposed development area.

## 1. INTRODUCTION

### 1.1 Site Location

- 1.1.1 The proposed development is centred on NGR: NT 0310 6802, and lies on the south-western fringes of Livingston. It is bounded by to the east by open fields, to the west by Deer Park golf course, to the north by Houston Road, and to the south west by woodland, Eliburn reservoir and residential housing (Figure 1). The site lies within an area of open former agricultural land, and is bisected by a small water course. It is currently used by occasional dog walkers.

### 1.2 Archaeological background

- 1.2.1 No known archaeological sites or findspots were known within the development area, although a spindle whorl (NMRS NT06NW16) had been recovered within the wider area. As no prior development within the boundary of the planning application boundary had been undertaken, the survival of as yet unknown subsurface archaeological features remained a significant probability.

## 2. OBJECTIVES

- 2.1 The objectives of the archaeological works were:
  - i) to determine the character, extent, condition, quality, date and significance of any buried archaeological remains within the development area;
  - ii) to advise and implement an appropriate form of mitigation, such as excavation, post-excavation analyses and publication, should significant archaeological remains be encountered.

## 3. METHOD

- 3.1 A Written Scheme of Investigation (WSI) proposed the excavation of trenches equating to at least an 8% sample of the proposed development area. The site covered 4.73 ha resulting in an evaluation requiring investigation of at least 3,785 m<sup>2</sup>. The proposed trench location was agreed with WoSAS prior to the works starting. The positioning of the trenches were designed to cover those areas that were to be disturbed during the development works and also to avoid an area in the eastern half of

the development area where a foul water sewer had been located. In the field it was also agreed with West Lothian Council to create a buffer zone around an area where a Butterfly Orchid has been recorded, as well as keeping intact a couple of well used dog walking paths. These slight amendments to the agreed trench layout did not significantly compromise the agreed coverage, and the full 8% sample was realised.

- 3.2 In total 36 trenches were excavated totalling 3810 m<sup>2</sup>, representing just over the required 8% sample. Figure 2 shows the location of each trench.
- 3.3 The trenches were excavated with a 360° tracked excavator using a 2.0 m wide ditching bucket. The trench details are summarised in Appendix 1.
- 3.4 Machine excavation was conducted in shallow units/spits through the overburden to the upper surface of the underlying geological deposits.
- 3.5 At all times the evaluation trial trenching was undertaken according to AOC Archaeology Group's standard operating procedures detailed with the WSI.

## 4. RESULTS

### 4.1 Introduction

- 4.1.1 The works were conducted between 26<sup>th</sup> and 30<sup>th</sup> May 2008. The weather conditions during the evaluation were predominantly dry and sunny. Overall archaeological visibility was good.
- 4.1.2 The various data gathered from the excavation are presented as a series of appendices:

Appendix 1 contains trench summaries;

Appendix 2 contains the photographic register;

Appendix 3 reproduces the *Discovery & Excavation in Scotland* entry.

### 4.2 Overview

- 4.2.1 No significant archaeological features, deposits or artefacts were encountered during the evaluation. Examination of the spoil from trenches did not lead to the recovery of any significant unstratified artefacts.
- 4.2.2 The topsoil was recorded as between c 0.20 m and 0.46 m deep. The natural subsoil across the development area was recorded generally as very light brown sandy clay, with patches of grey clay and outcropping bedrock. A series of parallel red tile field drains, aligned north-south, were recorded across the development area.

## 5. DISCUSSION

- 5.1. The evaluation trenching provided comprehensive coverage across the proposed development area, however no archaeology was encountered. The lack of finds from the spoil would also suggest that no significant archaeology lies within the development area.

## 6. CONCLUSION

- 6.1 We recommend that given the scale of the evaluation undertaken and the complete absence of any sort of archaeological material that no further works are required.

## 7. REFERENCES

Eliburn Park Evaluation Written Scheme of Investigation. AOC Archaeology Client Report

SOEnd 1994 *Planning Advice Note 42: Archaeology – the Planning Process and Scheduled Ancient Monument Procedures*. January 1994. The Scottish Office Environment Department.

SOEnd 1994a *National Planning Policy Guideline NPPG 5. Archaeology and Planning*. January 1994. The Scottish Office Environment Department.



## APPENDIX 1: TRENCH SUMMARIES

### Trench 1

Dimensions	100 m by 2 m
Total Area	200 m <sup>2</sup>
Orientation	N-S
Depth to Subsoil	Between 0.35 m and 0.40 m.
Significant Features	No archaeological features.
Finds	No unstratified material.

### Trench 2

Dimensions	100 m by 2 m
Total Area	200 m <sup>2</sup>
Orientation	N-S
Depth to Subsoil	Between 0.30 m and 0.40 m.
Significant Features	No archaeological features.
Finds	No unstratified material.

### Trench 3

Dimensions	50 m by 2 m
Total Area	100 m <sup>2</sup>
Orientation	NW-SE
Depth to Subsoil	Between 0.30 m and 0.35 m.
Significant Features	No archaeological features.
Finds	No unstratified material.

### Trench 4

Dimensions	50 m by 2 m
Total Area	100 m <sup>2</sup>
Orientation	NW-SE
Depth to Subsoil	Between 0.25 m and 0.35 m.
Significant Features	No archaeological features.
Finds	No unstratified material.

### Trench 5

Dimensions	50 m by 2 m
Total Area	100 m <sup>2</sup>
Orientation	NW-SE
Depth to Subsoil	0.30 m.
Significant Features	No archaeological features.
Finds	No unstratified material.

### Trench 6

Dimensions	25 m by 2 m
Total Area	50 m <sup>2</sup>
Orientation	NE-SW
Depth to Subsoil	Between 0.25 m and 0.45 m.
Significant Features	No archaeological features.
Finds	No unstratified material.

### Trench 7

Dimensions	100 m by 2 m
Total Area	200 m <sup>2</sup>
Orientation	N-S
Depth to Subsoil	Between 0.30 m and 0.35 m.
Significant Features	No archaeological features.
Finds	No unstratified material.

**Trench 8**

Dimensions 50 m by 2 m  
Total Area 100 m<sup>2</sup>  
Orientation NW-SE  
Depth to Subsoil Between 0.28 m and 0.34 m.  
Significant Features No archaeological features.  
Finds No unstratified material.

**Trench 9**

Dimensions 50 m by 2 m  
Total Area 100 m<sup>2</sup>  
Orientation NW-SE  
Depth to Subsoil Between 0.27 m and 0.30 m.  
Significant Features No archaeological features.  
Finds No unstratified material.

**Trench 10**

Dimensions 50 m by 2 m  
Total Area 100 m<sup>2</sup>  
Orientation NW-SE  
Depth to Subsoil 0.30 m.  
Significant Features No archaeological features.  
Finds No unstratified material.

**Trench 11**

Dimensions 25 m by 2 m  
Total Area 50 m<sup>2</sup>  
Orientation NE-SW  
Depth to Subsoil Between 0.25 m and 0.30 m  
Significant Features No archaeological features.  
Finds No unstratified material.

**Trench 12**

Dimensions 100 m by 2 m  
Total Area 200 m<sup>2</sup>  
Orientation E-W  
Depth to Subsoil Between 0.27 m and 0.30m.  
Significant Features No archaeological features.  
Finds No unstratified material.

**Trench 13**

Dimensions 25 m by 2 m  
Total Area 50 m<sup>2</sup>  
Orientation NE-SW  
Depth to Subsoil Between 0.27 m and 0.30 m.  
Significant Features No archaeological features.  
Finds No unstratified material.

**Trench 14**

Dimensions 50 m by 2 m  
Total Area 100 m<sup>2</sup>  
Orientation NE-SW  
Depth to Subsoil Between 0.20 m and 0.35 m.  
Significant Features No archaeological features.  
Finds No unstratified material.

**Trench 15**

Dimensions 50 m by 2 m  
Total Area 100 m<sup>2</sup>  
Orientation NE-SW

Depth to Subsoil Between 0.30 m and 0.35 m.  
 Significant Features No archaeological features.  
 Finds No unstratified material.

#### **Trench 16**

Dimensions 25 m by 2 m  
 Total Area 50 m<sup>2</sup>  
 Orientation E-W  
 Depth to Subsoil Between 0.28 m and 0.34 m.  
 Significant Features No archaeological features.  
 Finds No unstratified material.

#### **Trench 17**

Dimensions 60 m by 2 m  
 Total Area 120 m<sup>2</sup>  
 Orientation E-W  
 Depth to Subsoil 0.30 m.  
 Significant Features No archaeological features.  
 Finds No unstratified material.

#### **Trench 18**

Dimensions 40 m by 2 m  
 Total Area 80 m<sup>2</sup>  
 Orientation E-W  
 Depth to Subsoil Between 0.30 m and 0.35 m.  
 Significant Features No archaeological features.  
 Finds No unstratified material.

#### **Trench 19a**

Dimensions 55 m by 2 m  
 Total Area 110 m<sup>2</sup>  
 Orientation NW-SE  
 Depth to Subsoil Between 0.32 m and 0.37 m.  
 Significant Features No archaeological features.  
 Finds No unstratified material.

#### **Trench 19b**

Dimensions 30 m by 2 m  
 Total Area 120 m<sup>2</sup>  
 Orientation NW-SE  
 Depth to Subsoil Between 0.32 m and 0.40 m.  
 Significant Features No archaeological features.  
 Finds No unstratified material.

#### **Trench 20**

Dimensions 35 m by 2 m  
 Total Area 70 m<sup>2</sup>  
 Orientation NW-SE  
 Depth to Subsoil Between 0.28 m and 0.40 m.  
 Significant Features No archaeological features.  
 Finds No unstratified material.

#### **Trench 21**

Dimensions 40 m by 2 m  
 Total Area 80 m<sup>2</sup>  
 Orientation E-W  
 Depth to Subsoil Between 0.30 m and 0.36 m.  
 Significant Features No archaeological features.  
 Finds No unstratified material.

#### **Trench 22**

Dimensions 85 m by 2 m  
 Total Area 170 m<sup>2</sup>  
 Orientation E-W  
 Depth to Subsoil Between 0.25 and 0.34 m.  
 Significant Features No archaeological features.  
 Finds No unstratified material.

#### **Trench 23**

Dimensions 20 m by 2 m  
 Total Area 40 m<sup>2</sup>  
 Orientation E-W  
 Depth to Subsoil Between 0.25 m and 0.33 m.  
 Significant Features No archaeological features.  
 Finds No unstratified material.

#### **Trench 24**

Dimensions 70 m by 2 m  
 Total Area 140 m<sup>2</sup>  
 Orientation E-W  
 Depth to Subsoil Between 0.32 and 0.37 m.  
 Significant Features No archaeological features.  
 Finds No unstratified material.

#### **Trench 25**

Dimensions 100 m by 2 m  
 Total Area 200 m<sup>2</sup>  
 Orientation NE-SW  
 Depth to Subsoil Between 0.25 and 0.32 m.  
 Significant Features No archaeological features.  
 Finds No unstratified material.

#### **Trench 26**

Dimensions 30 m by 2 m  
 Total Area 60 m<sup>2</sup>  
 Orientation NE-SW  
 Depth to Subsoil Between 0.25 m and 0.34 m.  
 Significant Features No archaeological features.  
 Finds No unstratified material.

#### **Trench 27**

Dimensions 50 m by 2 m  
 Total Area 100 m<sup>2</sup>  
 Orientation NW-SE  
 Depth to Subsoil Between 0.30 m and 0.32 m.  
 Significant Features No archaeological features.  
 Finds No unstratified material.

#### **Trench 28**

Dimensions 80 m by 2 m  
 Total Area 160 m<sup>2</sup>  
 Orientation E-W  
 Depth to Subsoil Between 0.30 m and 0.35 m.  
 Significant Features No archaeological features.  
 Finds No unstratified material.

#### **Trench 29**

Dimensions 12 m by 2 m  
 Total Area 24 m<sup>2</sup>  
 Orientation N-S

Depth to Subsoil Between 0.20 m and 0.35 m.  
 Significant Features No archaeological features.  
 Finds No unstratified material.

#### **Trench 30**

Dimensions 38 m by 2 m  
 Total Area 76 m<sup>2</sup>  
 Orientation N-S  
 Depth to Subsoil Between 0.25 m and 0.30 m.  
 Significant Features No archaeological features.  
 Finds No unstratified material.

#### **Trench 31**

Dimensions 50 m by 2 m  
 Total Area 100 m<sup>2</sup>  
 Orientation N-S  
 Depth to Subsoil Between 0.30 m and 0.35 m.  
 Significant Features No archaeological features.  
 Finds No unstratified material.

#### **Trench 32**

Dimensions 50 m by 2 m  
 Total Area 100 m<sup>2</sup>  
 Orientation N-S  
 Depth to Subsoil Between 0.23 and 0.35 m.  
 Significant Features No archaeological features.  
 Finds No unstratified material.

#### **Trench 33**

Dimensions 25 m by 2 m  
 Total Area 50 m<sup>2</sup>  
 Orientation N-S  
 Depth to Subsoil 0.30 m.  
 Significant Features No archaeological features.  
 Finds No unstratified material.

#### **Trench 34**

Dimensions 40 m by 2 m  
 Total Area 80 m<sup>2</sup>  
 Orientation E-W  
 Depth to Subsoil Between 0.32 m and 0.46 m.  
 Significant Features No archaeological features.  
 Finds No unstratified material.

#### **Trench 35**

Dimensions 55 m by 2 m  
 Total Area 110 m<sup>2</sup>  
 Orientation N-S  
 Depth to Subsoil Between 0.20 m and 0.30 m.  
 Significant Features No archaeological features.  
 Finds No unstratified material.

#### **Trench 36**

Dimensions 55 m by 2 m  
 Total Area 110 m<sup>2</sup>  
 Orientation N-S  
 Depth to Subsoil Between 0.28 m and 0.36 m.  
 Significant Features No archaeological features.  
 Finds No unstratified material.

## APPENDIX 2: PHOTOGRAPHIC REGISTER

Colour Slide and Black & White Print – FILM No.1

Shot No.	Area	Description	From
1&2		Registration shot	
3&4	W	General site view from SW corner looking N	S
5&6	W	General site view from SW corner looking N	SW
7&8	W	General site view from SW corner looking E	W
9&10	W	General site view from SE corner looking N	S
11&12	W	General site view from SE corner looking E	W
13&14	W	General site view from SE corner looking W	E
15&16	W	General site view from NE corner looking W	E
17&18	W	General site view from NE corner looking SW	SE
19&20	W	General site view from NE corner looking S	N
21&22	W	General site view from NW corner looking SE	NW
23&24	W	General site view from NW corner looking SW	NE
25&26	W	General site view from NW corner looking E	W
27&28	E	General site view from NE corner looking SW	NE

### APPENDIX 3: DISCOVERY AND EXCAVATION IN SCOTLAND REPORT

LOCAL AUTHORITY:	West Lothian Council
PROJECT TITLE/SITE NAME:	Eliburn Park, Livingston, West Lothian Evaluation
PROJECT CODE:	AOC 21002
PARISH:	Livingston
NAME OF CONTRIBUTOR:	Alan Duffy
NAME OF ORGANISATION:	AOC Archaeology Group
TYPE(S) OF PROJECT:	Archaeological Evaluation
NMRS NO(S):	None
SITE/MONUMENT TYPE(S):	None
SIGNIFICANT FINDS:	None
NGR (2 letters, 6 figures)	NT 0310 6802
START DATE (this season)	26th May 2008
END DATE (this season)	30th May 2008
PREVIOUS WORK (incl. DES ref.)	None
MAIN (NARRATIVE) DESCRIPTION: (May include information from other fields)	An 8% sample evaluation was undertaken at Eliburn Park, Livingston prior to a 4.73 ha recreational development. In total 36 trenches totalling 3810 m <sup>2</sup> were opened. The greenfield site proved to be archaeologically sterile with no significant features or artefactual material observed.
PROPOSED FUTURE WORK:	None
CAPTION(S) FOR ILLUSTRS:	n/a
SPONSOR OR FUNDING BODY:	West Lothian Council Property Services Department
ADDRESS OF MAIN CONTRIBUTOR:	C/o AOC Archaeology Group
EMAIL ADDRESS:	Alan.Duffy@aocarchaeology.com



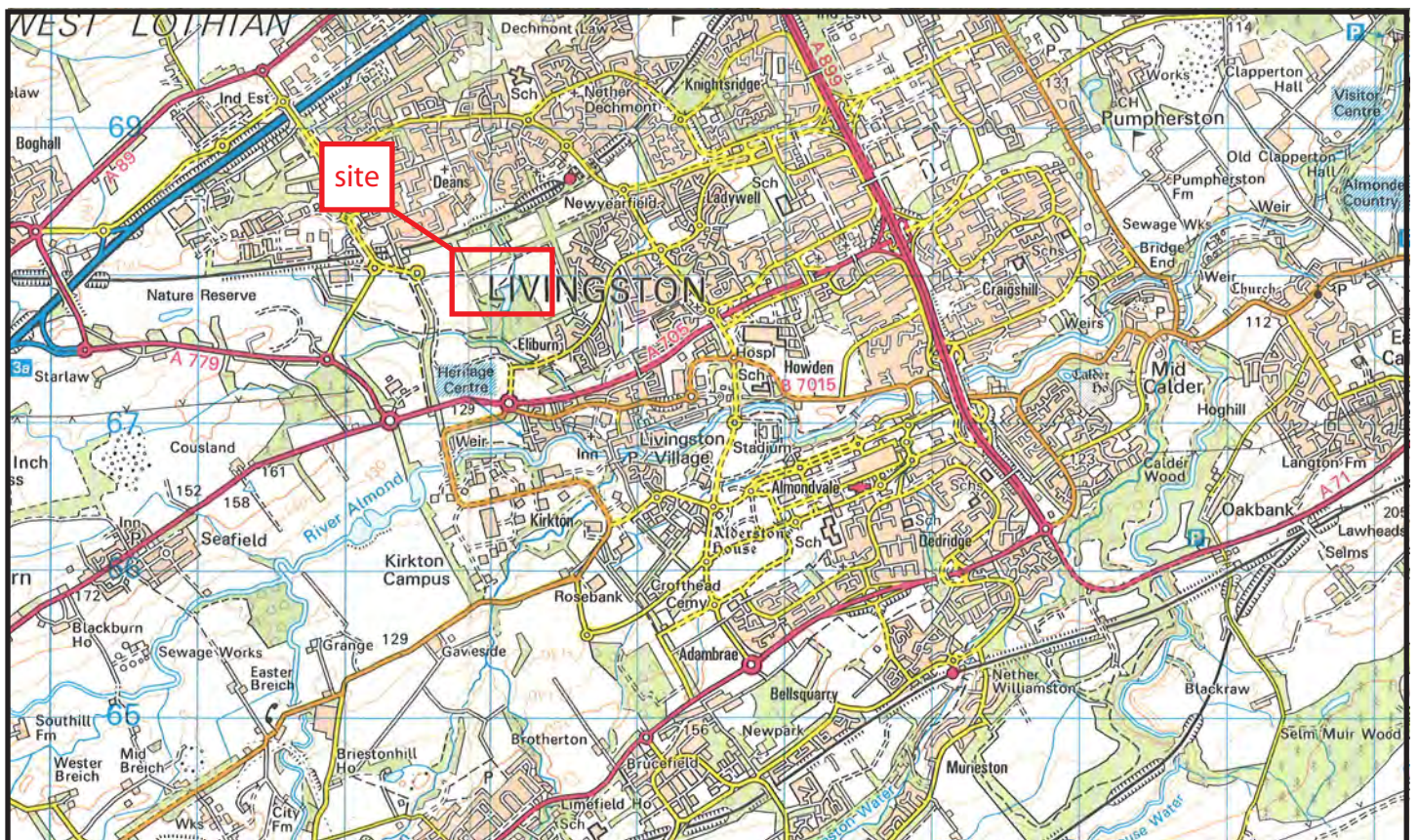
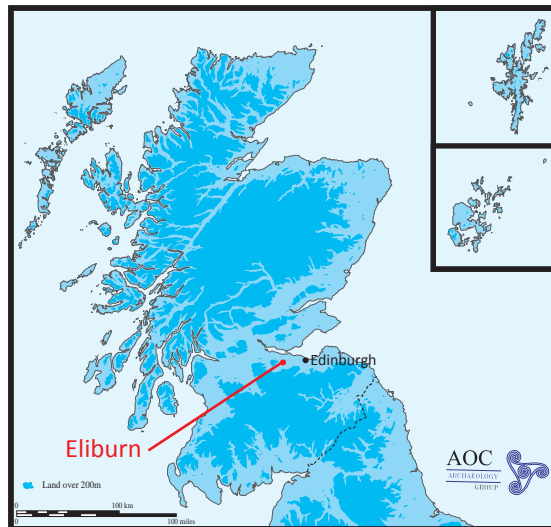
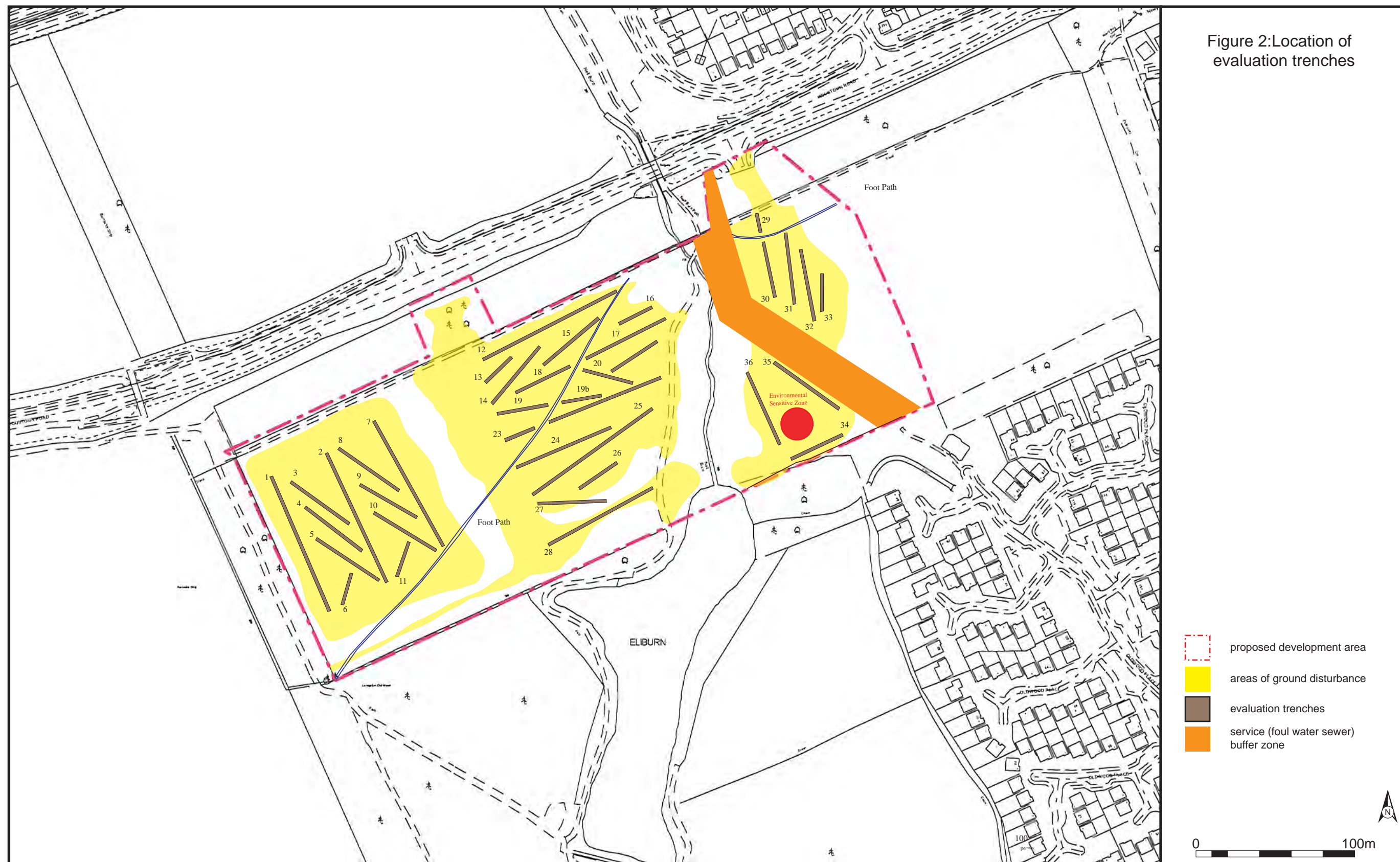
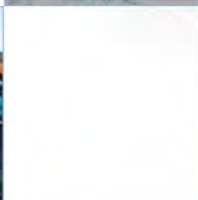


Figure 1: Site location









**AOC Archaeology Group**, Edgefield Industrial Estate, Edgefield Road, Loanhead EH20 9SY  
tel: 0131 440 3593 | fax: 0131 440 3422 | e-mail: [edinburgh@aocarchaeology.com](mailto:edinburgh@aocarchaeology.com)

[www.aocarchaeology.com](http://www.aocarchaeology.com)