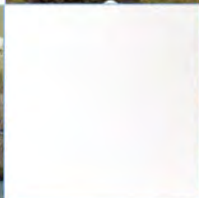


Sanmar, Nether Pittendreich: Data Structure Report

May 2008



ARCHAEOLOGY

HERITAGE

CONSERVATION

Sanmar, Nether Pittendreich

Data Structure Report

| | |
|---------------------------------------|--|
| On Behalf of: | Algo (Blairgowrie) Ltd Algo Business Centre Glenearn Road Perth PH2 ONJ |
| National Grid Reference (NGR): | NO 15447 41031 |
| AOC Project No: | 21043 |
| Prepared by: | Alan Hunter Blair |
| Illustration by: | Alan Hunter Blair |
| Date of Fieldwork: | May 2008 |
| Date of Report: | May 2008 |

This document has been prepared in accordance with AOC standard operating procedures.

Author: Alan Hunter Blair

Date: 27/5/2008

Approved by: John Gooder

Date: 27/5/2008

Draft Report Stage:

Date: 27/5/2008

Enquiries to: AOC Archaeology Group
Edgefield Industrial Estate
Edgefield Road
Loanhead
EH20 9SY

Tel. 0131 440 3593
Fax. 0131 440 3422
e-mail. admin@aocarchaeology.com

Contents

| | Page |
|--------------------------------|------|
| List of illustrations..... | 3 |
| List of plates..... | 3 |
| List of appendices..... | 3 |
| Non Technical Summary..... | 2 |
| Introduction..... | 2 |
| Archaeological Background..... | 2 |
| Objectives..... | 2 |
| Method | 3 |
| Results | 3 |
| Discussion | 4 |
| References | 4 |

List of illustrations

- Figure 1: Site location plan
Figure 2: Evaluation trench plan
Figure 3: Plan showing position of features in Trenches 9 and 10
Figure 4: Sections through ditch 104

List of plates

- Plate 1: General view of east end of site
Plate 2: Pit 200 in Trench 2 from the north-west
Plate 3: South-facing section through ditch 104 in Trench 1
Plate 4: North-facing section through ditch 104 in Trench 2
Plate 5: South-facing section through ditch 104 in Trench 4
Plate 6: View of Cleaven Dyke and development area from the south-east
Plate 6: View of Cleaven Dyke and development area from the east-south-east

List of appendices

- Appendix 1: Trench Descriptions
Appendix 2: Context Register
Appendix 3: Photographic Register
Appendix 4: Drawing Register
Appendix 5: *Discovery & Excavation in Scotland* Entry

1 NON TECHNICAL SUMMARY

- 1.1 An archaeological evaluation, carried out within a proposed development site at Sanmar, Nether Pittendreich, Perth and Kinross, recorded a number of relatively recent features dispersed across the western and northern parts of the evaluation area. These comprised parts of a linear ditch, probably associated with drainage and a large pit associated with repair to a blocked drain on the western part of the site. A number of miscellaneous cuts and fills some of which were attributed to animal disturbance the others as probable garden features were recorded on the northernmost part of the site in front of Nether Pittendreich House.

2 INTRODUCTION

2.1 Project background

- 2.1.1 A programme of archaeological works was required by Algo (Blairgowrie) Ltd in respect of a planning condition (Ref: 07/02295/FUL) in regard to the proposed erection of four poultry buildings at Sanmar, Nether Pittendreich, Perth and Kinross (centred NGR: NO 15447 41031). The requirement for, and extent of archaeological works was determined by Perth and Kinross Council, as advised by Ms Sarah Winlow of Perth and Kinross Heritage Trust (PKHT). The evaluation was carried out in accord with the principles set out in NPPG 5 (SOEnd 1994), NPPG 18 (SODD1999) and PAN 42 (SOEnd 1994a), and was designed to determine the nature, extent, condition, date, and significance of any archaeological remains within the proposed development area, and in the event of significant archaeological remains being encountered, prepare an appropriate mitigation strategy. The work was conducted in accordance with a *Written Scheme of Investigation*, designed fully to satisfy and meet the requirements of PKHT, and was undertaken between 13th May and 15th May 2008 in fine weather conditions.

2.2 Archaeological background

- 2.2.1 The development area lies close to the north-western end of the Cleaven Dyke, a Neolithic cursus, statutorily protected as a Scheduled Ancient Monument. This together with local evidence of flint working in Nether Pittendreich and the presence of enclosure and linear cropmarks in the fields to the immediate west and north-west of the development area has necessitated the requirement for the evaluation.

3. OBJECTIVES

- 3.1 The objectives of the archaeological works were:
- i) to determine the character, condition, extent, quality and date of any archaeologically significant remains in the proposed development area;

- ii) given that significant archaeological deposits be discovered, the preparation of a mitigation strategy compliant with NPPG 5, NPPG 18 and PAN 42.

4. METHOD

- 4.1 A total area of 1000 m² was excavated this amounted to a 5% sample of the 2 ha development site. The evaluation trenches were excavated using a JCB mechanical excavator equipped with toothless ditching bucket, down to the level of the first significant archaeological horizon, or to natural drift deposits, as appropriate. Subsequent excavation was by hand. Within the trenches, potential archaeological features were recorded photographically (black and white print, colour slide film and digital, Appendix 3) and were drawn in plan and section at scales of 1:10, 1:20 or as appropriate (Appendix 4). A full description of all excavated contexts is presented in Appendix 2. Appendix 5 contains a copy of the *Discovery and Excavation in Scotland* entry

5 RESULTS

- 5.1 The following text should be read in conjunction with the fuller trench descriptions in Appendix 1 and context descriptions given in Appendix 2, the trench locations are shown by Figure 2.
- 5.2 A ditch [104], aligned NNW to SSE was recorded in Trenches 1, 2 and 4. (Figure 2 & 4, Plates 3, 4 and 5) The profile of the ditch varied slightly from trench to trench but essentially comprised of steep slightly concave sides breaking gradually to form a wide slightly rounded base. The ditch contained two fills the upper [105] consisted of mid-brown, silty sandy clay with pale yellow/brown mottling and moderate inclusions of small to medium sized angular and rounded stones. The basal fill [106] comprised of grey/brown sandy silty clay with frequent gravel and occasional larger stones. A single sherd of modern white ceramic was visible in the upper fill [105] of the ditch section excavated in Trench 1; no other finds were seen. The ditch was recorded over a distance of 36.81 m and continued beyond the trench baulks to the north and south, it measured up to 1.9 m wide and up to 0.55 m deep below the base of the trench.
- 5.3 A large pit [200] (Figure 2, Plate 2) was recorded in Trench 2 aligned north-east to south-west. This measured 5.47 m long by 2.14 m wide. A drain was visible aligned north-east to south-west running along the western edge of the pit. The pit was partially excavated but after an on-site discussion with the farm manager who intimated the pit had been created during repairs to a blocked drain at this part of the site further excavation of the pit was abandoned.
- 5.4 A shallow linear gully [800] (Figure 2) was recorded in Trench 8 aligned north to south it continued under the both sections of Trench 8. Measuring 1.07 m wide it contained a single fill [801] of mid brown silty sand 0.12 m deep.

- 5.5 A concentration of shallow pits and linear cuts were recorded on top of a bluff towards the north-east part of the development area in Trenches 9 and 10 (Figure 3). Pits [900], [902] and [904] recorded in Trench 9 were shallow, sub-oval in plan and with the exception of pit [904] their fills all contained small degraded fragments of wood. Pit [906], also recorded in Trench 9, was shallow, sub-rectangular in plan and had a fill of topsoil mixed with lenses of yellow sand containing frequent small fragments of coal and occasional degraded small animal bone fragments. Three cut features were recorded in Trench 10. Two of these, [1000] and [1004] were narrow linear cuts in plan and containing shallow fills of silty sand with discontinuous lenses of yellow sand. Baler twine, small degraded wood fragments and occasional animal bone fragments were visible in the fill [1001] of cut [1000]. A single fragment of modern white ceramic was observed in the fill [1005] of cut [1004]. Part of an amorphous shaped pit [1002] was recorded along the western edge of Trench 10, this was filled by a silty sand with discontinuous lenses of yellow sand [1003] and contained frequent root fibers.
- 5.6 Elsewhere across the site numerous drains were encountered. Rubble drains built from rounded and angular stone were visible aligned roughly north to south. Tile and plastic drains were also encountered aligned north to south with occasional drains found on an east to west alignment.

6 DISCUSSION

- 6.1 The features recorded during the evaluation are believed to be relatively recent in date. The ditch recorded in Trenches 1, 2 and 4 may have formed part of an open ditch drainage system prior to the insertion of rubble drains followed in turn by tile drains and plastic drains. The ditch was aligned parallel to an open ditch visible in the central part of the site at a distance of 75 m. This drained into another open ditch aligned east to west forming the southern limit of the site. Fields to the east of the development area, obviously subjected to improvement in the past, were succumbing to rushes which suggested that until the land here had been drained it may have been unfit for settlement. The shallow gully recorded in Trench 8 was believed to be a natural feature and the miscellaneous cuts and fills recorded in Trenches 9 and 10 may have been created by animal burrowing or gardening activity associated with Nether Pittendreich House prior to its conversion for use as offices by the present incumbent. Given the paucity of the results no further work is recommended.

7. REFERENCES

Poultry buildings and officer Sanmar, Nether Pittendreich, Meikleour, *Terms of Reference for and Archaeological Evaluation*, 17/04/02008

The Scottish Office Development Department 1999 *National Planning Policy Guideline 18. Planning and the Historic Environment*.

The Scottish Office Environment Department 1994. *National Planning Policy Guideline 5. Archaeology and Planning*.

The Scottish Office Environment Department 1994a. *Planning Advice Note 42. Archaeology – the Planning Process and Scheduled Ancient Monument Procedures.*

Sanmar, Nether Pittendreich, Evaluation: Data Structure Report

Section 3: Appendices

APPENDIX 1: TRENCH DESCRIPTIONS

Trench 1

Dimensions: 55 m by 2 m
Orientation: North-east to south-west
Topsoil depth: 0.35
Subsoil depth: n/a
Modern Features: Drains, Ditch 104.
Significant Features: No significant archaeological features were recorded.
Finds: Modern ceramic not retained
Natural subsoil

Trench 2

Dimensions: 33 m by 2 m
Orientation: North-west to south-east
Topsoil depth: 0.32 m
Subsoil depth: 0.18 m
Modern Features: Pit 200, Ditch 104 and drains
Significant Features: No significant archaeological features were recorded.
Finds: No artefacts were recovered from the trench
Natural subsoil

Trench 3

Dimensions: 27 m by 2 m
Orientation: NNW to SSE
Topsoil depth: 0.35 m
Subsoil depth: 0.25 m
Modern Features: Drains
Significant Features: No significant archaeological features were recorded.
Finds: No artefacts were recovered from the trench
Natural subsoil Clay

Trench 4

Dimensions: 30 m by 2 m
Orientation: WNW to ESE
Topsoil depth: 0.35 m
Subsoil depth: 0.35 m
Modern Features: Drains
Significant Features: Ditch 104.
Finds: No artefacts were recovered from the trench
Natural subsoil Clay

Trench 5

Dimensions: 32 m by 2 m
Orientation: North-east to south-west
Topsoil depth: 0.35 m
Subsoil depth: 0.25 m
Modern Features: Drains
Significant Features: No archaeological features were recorded.
Finds: No artefacts were recovered from the trench
Natural subsoil Clay

Trench 6

Dimensions: 30 m by 2 m
Orientation: NNW to SSE
Topsoil depth: 0.35 m
Subsoil depth: 0.15 m
Modern Features: Drains
Significant Features: No archaeological features were recorded.
Finds: No artefacts were recovered from the trench
Natural subsoil Clay

Trench 7

Dimensions: 31.5 m by 2 m
Orientation: North-east to south-west
Topsoil depth: 0.35 m
Subsoil depth: 0.08 m
Modern Features: Drains
Significant Features: No archaeological features were recorded
Finds: No artefacts were recovered from the trench
Natural subsoil Clay

Trench 8

Dimensions: 29 m by 2 m
Orientation: North-east to south-west
Topsoil depth: 0.35 m
Subsoil depth: 0.25 m
Modern Features: Drains, natural gully 800
Significant Features: No archaeological features were recorded.
Finds: No artefacts were recovered from the trench
Natural subsoil Clay

Trench 9

Dimensions: 15 m by 2 m
Orientation: North-east to south-west
Topsoil depth: 0.38 m
Subsoil depth: n/a
Modern Features: Cuts 900, 902, 904 and 906
Significant Features: None.
Finds: No artefacts were recovered from the trench
Natural subsoil Sand

Trench 10

Dimensions: 17 m by 2 m
Orientation: North-west to south-east
Topsoil depth: 0.32 m
Subsoil depth: n/a
Modern Features: Cuts 1000, 1002 and 1004
Significant Features: None.
Finds: No artefacts were recovered from the trench
Natural subsoil Sand

Trench 11

Dimensions: 18 m by 2 m
Orientation: North-west to south-east

| | |
|------------------------------|---|
| <i>Topsoil depth:</i> | 0.35 m |
| <i>Subsoil depth:</i> | n/a |
| <i>Modern Features:</i> | None |
| <i>Significant Features:</i> | None. |
| <i>Finds:</i> | No artefacts were recovered from the trench |
| <i>Natural subsoil</i> | Sand |

Trench 12

| | |
|------------------------------|---|
| <i>Dimensions:</i> | 31.4 m by 2 m |
| <i>Orientation:</i> | North-west to south-east |
| <i>Topsoil depth:</i> | 0.35 m |
| <i>Subsoil depth:</i> | 0.25 m |
| <i>Modern Features:</i> | Drains |
| <i>Significant Features:</i> | None. |
| <i>Finds:</i> | No artefacts were recovered from the trench |
| <i>Natural subsoil</i> | Clay |

Trench 13

| | |
|------------------------------|---|
| <i>Dimensions:</i> | 30 m by 2 m |
| <i>Orientation:</i> | North-east to south-west |
| <i>Topsoil depth:</i> | 0.35 m |
| <i>Subsoil depth:</i> | 0.25 |
| <i>Modern Features:</i> | Drains |
| <i>Significant Features:</i> | None. |
| <i>Finds:</i> | No artefacts were recovered from the trench |
| <i>Natural subsoil</i> | Clay |

Trench 14

| | |
|------------------------------|---|
| <i>Dimensions:</i> | 31 m by 2 m |
| <i>Orientation:</i> | North-west to south-east |
| <i>Topsoil depth:</i> | 0.35 m |
| <i>Subsoil depth:</i> | 0.25 m |
| <i>Modern Features:</i> | Drains |
| <i>Significant Features:</i> | None. |
| <i>Finds:</i> | No artefacts were recovered from the trench |
| <i>Natural subsoil</i> | Clay |

Trench 15

| | |
|------------------------------|---|
| <i>Dimensions:</i> | 30 m by 2 m |
| <i>Orientation:</i> | North-west to south-east |
| <i>Topsoil depth:</i> | 0.35 m |
| <i>Subsoil depth:</i> | 0.25 m |
| <i>Modern Features:</i> | Drains |
| <i>Significant Features:</i> | None. |
| <i>Finds:</i> | No artefacts were recovered from the trench |
| <i>Natural subsoil</i> | Clay |

Trench 16

| | |
|-------------------------|--------------------------|
| <i>Dimensions:</i> | 30 m by 2 m |
| <i>Orientation:</i> | North-east to south-west |
| <i>Topsoil depth:</i> | 0.35 m |
| <i>Subsoil depth:</i> | 0.3 m |
| <i>Modern Features:</i> | Drains |

Significant Features: None.
Finds: No artefacts were recovered from the trench
Natural subsoil Clay

Trench 17

Dimensions: 30 m by 2 m
Orientation: North-west to south-east
Topsoil depth: 0.35 m
Subsoil depth: 0.30 m
Modern Features: Drains
Significant Features: None.
Finds: No artefacts were recovered from the trench
Natural subsoil Clay

APPENDIX 2: CONTEXT REGISTER

| <i>No.</i> | <i>Description</i> | <i>Trench</i> |
|------------|---|---------------|
| 104 | Cut: Linear in plan, aligned NNW to SSE. Steep sloping sides break moderately to form a wide slightly rounded base. Measured 36.81 m and continued beyond the trench baulks to the north and south. It measured up to 1.9 m wide and up to 0.55 m deep. Filled by 105 and 106. | 1, 2 and 4 |
| 105 | Fill: A moist, firm, mid-brown, silty sandy clay with pale yellow/brown mottling and moderate inclusions of small to medium sized angular and rounded stones. Measured 0.52 m deep. Upper fill of ditch 104 | 1, 2 and 4 |
| 106 | Fill: A moist, firm, grey/brown sandy silty clay with frequent inclusions of gravel and occasional larger stones. Measured up to 0.35 m deep. Basal fill of ditch 104 | 1, 2 and 4 |
| 800 | Cut: Linear in plan aligned north to south. Continued below trench edges to north and south. Broad shallow U-shaped profile. Shallow gently sloping sides break gradually to form a wide slightly rounded base. Measured 2 m long by 1.45 m wide by 0.26 m deep. Filled by 801. | 8 |
| 801 | Fill: A moist, firm, mid brown sandy clay with occasional inclusions of small rounded and angular stones. Measured 0.26 m deep. Fill of 800 | |
| 900 | Cut: An irregular oval in plan, broad shallow U-shaped in profile. Gently sloping sides break gradually to form a slightly rounded base. Measured 0.4 m long by 0.32 m wide by 0.08 m deep. Filled by 901 | 9 |
| 901 | Fill: A moist, firm, mid-brown sandy silt with discontinuous lenses of clean yellow sand with occasional inclusions of degraded wood fragments. Measured 0.08 m deep. Fill of 900 | 9 |
| 902 | Cut: Sub-circular in plan, U-shaped in profile. Steep near vertical sides break abruptly to form a flattish base. Measured 0.25 m in diameter by 0.11 m deep. Filled by 903 | 9 |
| 903 | Fill: A moist, firm, mid-brown sandy silt with discontinuous lenses of clean yellow sand with frequent inclusions of root fibers and occasional fragments of degraded wood. Measured 0.11 m deep. Fill of 902 | 9 |
| 904 | Cut: Sub-circular in plan, U-shaped in profile. Steep near vertical sides break abruptly to form a slightly rounded base. Measured 0.19 m in diameter x 0.11 m deep. Filled by 905 | 9 |
| 905 | Fill: A moist, firm, mid-brown sandy silt with discontinuous lenses of clean yellow sand with frequent inclusions of root fibres. Measured 0.11 m deep. | 9 |

| | | |
|------|---|----|
| | Fill of 904 | |
| 906 | Cut: Irregular, sub-rectangular in plan, irregular profile. Gently sloping sides break gradually to form an undulating base. Measured 1.1 m long by 0.6 m wide by up to 0.12 m deep. Filled by 907 | 13 |
| 907 | Fill: A moist, firm, mid-brown sandy silt with discontinuous lenses of clean yellow sand with frequent inclusions of very small coal fragments and occasional degraded animal bone fragments. Measured 0.12 m deep. Fill of 902 | 8 |
| 1000 | Cut: Linear in plan, aligned north-east to south-west. Irregular U-shape in profile, gently sloping slightly concave sides break gradually to form an irregular undulating base. Measured 1.5 m long (continued beyond trench edge to the north-east) by 0.29 m wide by 0.08 m deep. Filled by 1001 | 10 |
| 1001 | Fill: A moist, firm, mid-brown sandy silt with discontinuous lenses of clean yellow sand with occasional inclusions of degraded wood, animal bone and baler twine. Measured 0.08 m deep. Fill of 1000 | 10 |
| 1002 | Cut: Amorphous, semi-circular in plan (continued below trench edge to the west) U-shaped in profile. Steep straight sides break moderately to form a slightly rounded base. Measured 0.7 m long by 0.4 m wide by 0.37 m deep. Filled by 1003 | 10 |
| 1003 | Fill: A moist, firm, mid-brown sandy silt with discontinuous lenses of clean yellow sand with frequent inclusions of root fibers. Measured 0.37 m deep. Fill of 1002 | 10 |
| 1004 | Cut: Linear in plan (continued beyond trench edge to the north-east), aligned north-west to south-east, U-shaped in profile. Steep straight sides break abruptly to form a flat base. Measured 1.15 m long by 0.23 m wide by 0.16 m deep | 10 |
| 1005 | Fill: A moist, firm, mid-brown sandy silt with discontinuous lenses of clean yellow sand devoid of conspicuous inclusions. Measured 0.16 m deep. Fill of 1002 | 10 |

APPENDIX 3: PHOTOGRAPHIC RECORD

| <i>Frame</i> | <i>Description</i> | <i>Trench</i> | <i>From</i> |
|--------------|---|---------------|-------------|
| 1 | Registration | | |
| 2-3 | General view of the east end of site, Cleaven Dyke is visible at the edge of North wood | | N |
| 4-5 | Rubble drain | 1 | W |
| 6-7 | Pit 200 and drain | 2 | SW |
| 8 | General view of Trench 3 | 3 | N |
| 9 | General view of Trench 5 | 5 | E |
| 10 | General view of Trench 7 | 7 | NE |
| 11 | General view of Trenches 9, 10 and 11 | | SW |
| 12 | General view of trenches across the western part of the site | | NE |
| 13 | General view of Trench 13 | 13 | E |
| 14-15 | Gully 800 | 8 | S |
| 16-17 | Cut 1000 | 10 | S |
| 18-19 | Cut 1002 | 10 | E |
| 20-21 | Cut 1004 | 10 | W |
| 22-23 | Cut 906 | 9 | NE |

| | | | |
|-------|---------------------------|----|----|
| 24-25 | Cut 900 | 9 | W |
| 26-27 | Cut 902 | 9 | W |
| 28-29 | Cut 904 | 9 | W |
| 30-31 | Ditch 104 | 1 | S |
| 32-33 | Ditch 104 | 4 | SE |
| 34-35 | Ditch 104 | 4 | S |
| 35-36 | Gully 800 | 8 | S |
| 37-38 | General view of Trench 16 | 16 | SW |
| 39-40 | Ditch 104 | 2 | N |
| 41-42 | Ditch 104 | 2 | NW |
| 43-44 | Ditch 104 | 2 | N |
| 45-46 | Ditch 104 | 4 | N |
| 47 | Ditch 104 | 2 | N |
| 48 | Ditch 104 | 2 | E |
| 49-50 | Pit 200 and drain | 2 | NE |
| 51-52 | Pit 200 and drain | 2 | SW |

APPENDIX 4: DRAWING REGISTER

| <i>No.</i> | <i>Description</i> | <i>Trench</i> | <i>Scale</i> |
|------------|---|---------------|--------------|
| 1 | South-east facing section through ditch 104 | 1 | 1:10 |
| 2 | North-west facing section through ditch 104 | 2 | 1:10 |
| 3 | South-east facing section through ditch 104 | 4 | 1:10 |

APPENDIX 5: DISCOVERY AND EXCAVATION IN SCOTLAND ENTRY

| | |
|---|---|
| LOCAL AUTHORITY: | Perth and Kinross |
| PROJECT TITLE/SITE NAME: | Sanmar, Nether Pittendreich Evaluation |
| PROJECT CODE: | AOC 21043 |
| PARISH: | Caputh |
| NAME OF CONTRIBUTOR: | Alan Hunter Blair |
| NAME OF ORGANISATION: | AOC Archaeology Group |
| TYPE(S) OF PROJECT: | Evaluation |
| NMRS NO(S): | NO13NE 89 |
| SITE/MONUMENT TYPE(S): | |
| SIGNIFICANT FINDS: | None |
| NGR (2 letters, 6 figures) | NO 1545 4103 |
| START DATE (this season) | 13 th May 2008 |
| END DATE (this season) | 15 th May 2008 |
| PREVIOUS WORK (incl. <i>DES</i> ref.) | None |
| MAIN (NARRATIVE) DESCRIPTION: (May include information from other fields) | <p>An archaeological evaluation carried out within a proposed farming development at Nether Pittendreich, Perth and Kinross recorded a number of relatively modern features dispersed across the western and northern parts of the evaluation area.</p> <p>These comprised parts of a linear ditch, probably associated with drainage and a large pit associated with repair to a blocked drain on the western part of the site. A number of miscellaneous cuts and fills some of which were attributed to animal disturbance the others as probable garden features were recorded on the northern most part of the site in front of Nether Pittendreich House.</p> <p>Despite the presence of the Cleaven Dyke nearby to the south-east no trace of this monument was unearthed by the evaluation.</p> |
| PROPOSED FUTURE WORK: | --- |
| CAPTION(S) FOR ILLUSTRS: | None |
| SPONSOR OR FUNDING BODY: | Algo (Blairgowrie) Ltd |
| ADDRESS OF MAIN CONTRIBUTOR: | Edgefield Road Industrial Estate, Loanhead, Midlothian, EH20 9SY |
| EMAIL ADDRESS: | Admin@aocscot.co.uk |
| ARCHIVE LOCATION (intended/deposited) | Archive to be deposited in NMRS |

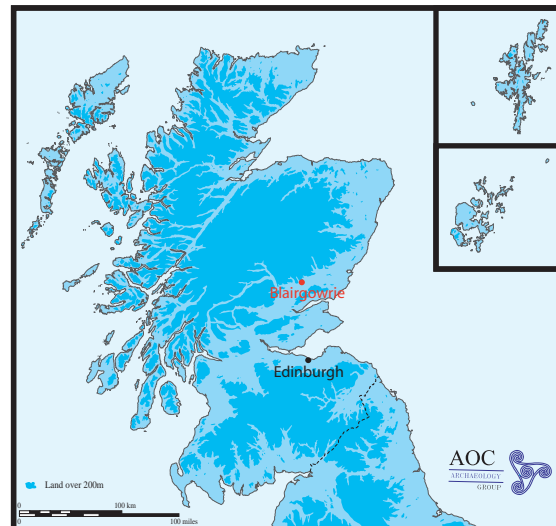


Figure 1: Site location

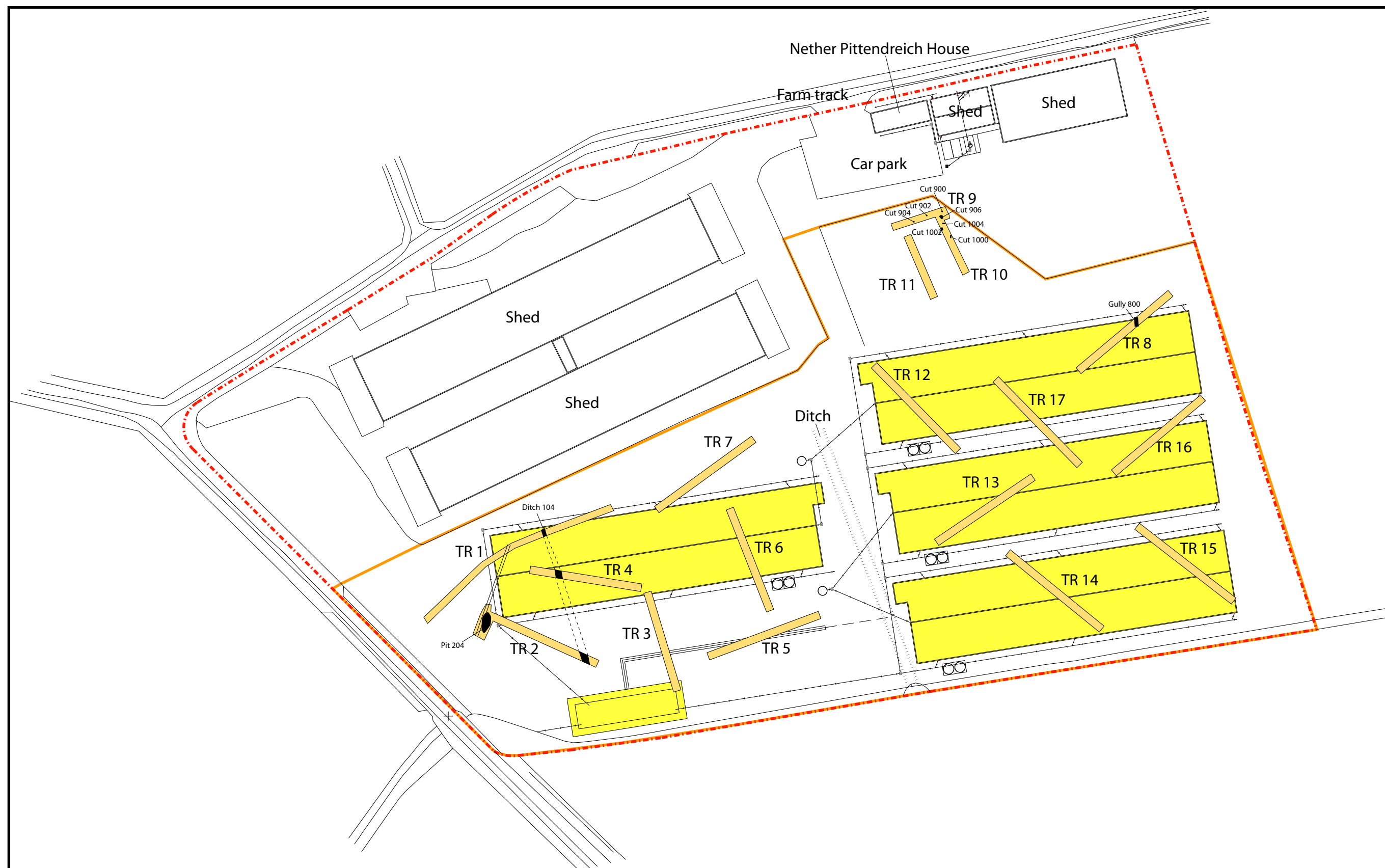


Figure 2: Evaluation trench plan

- site boundry
- development area
- evaluation trenches
- proposed building footprint



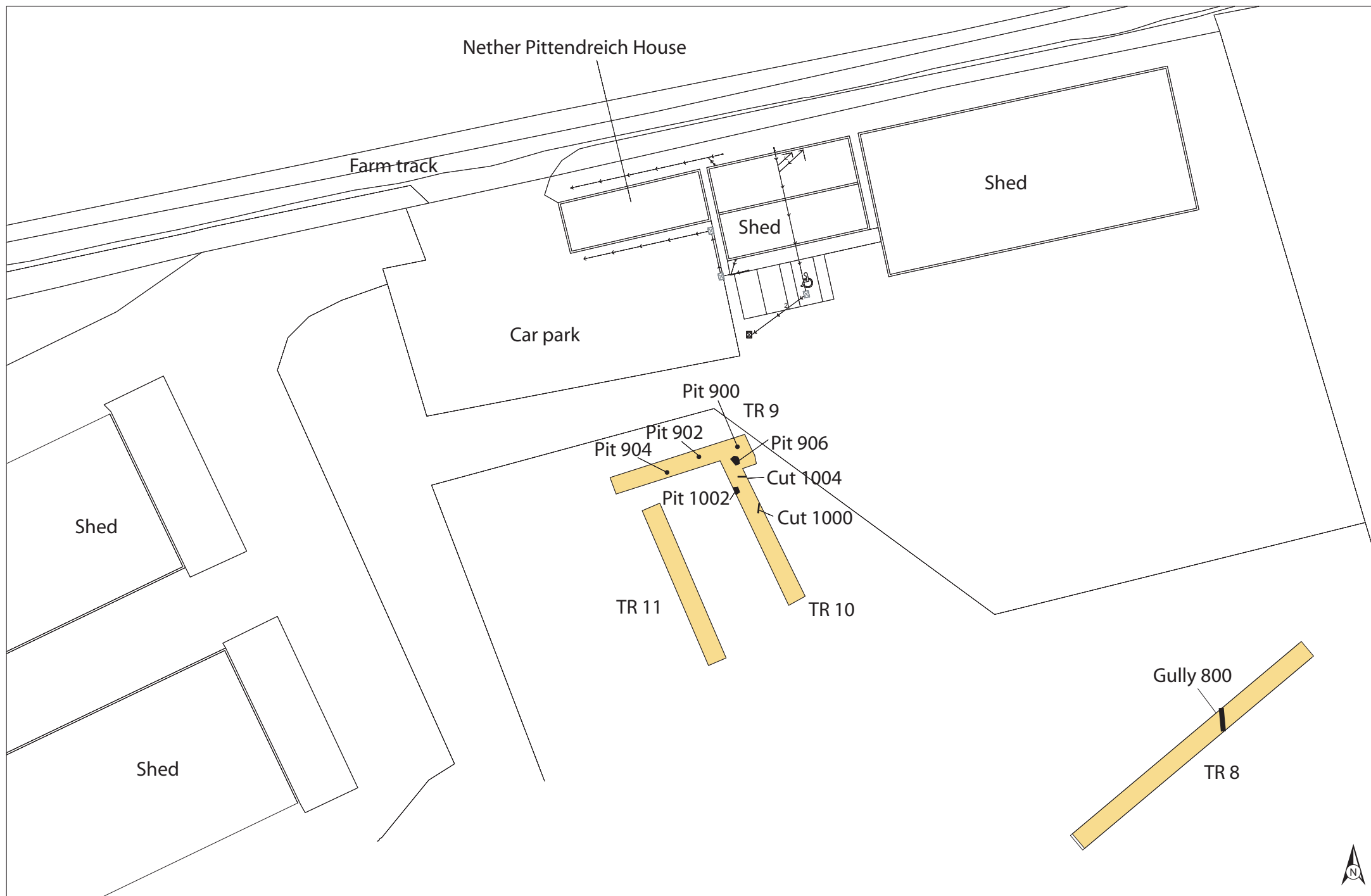
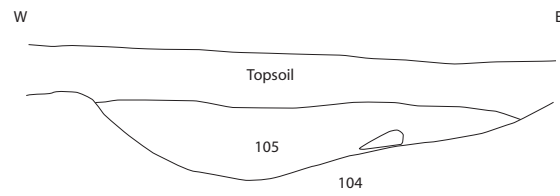
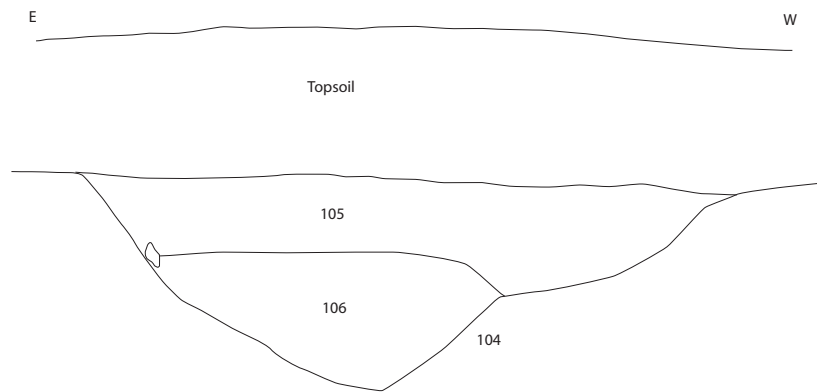


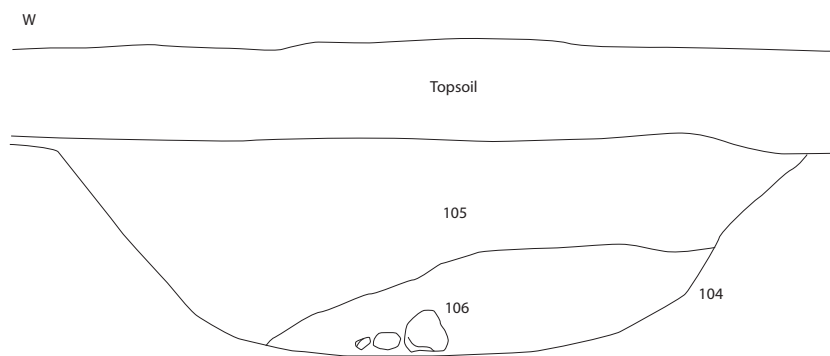
Figure 3: Plan showing position of features in Trenches 9 and 10



South facing section through ditch 104 in Trench 1



North facing section through ditch 104 in Trench 2



North facing section through ditch 104 in Trench 4



Figure 4: Sections through ditch 104



Plate 1: General view of the east end of site



Plate 2: General view of pit 200 in Trench 2, a drain is visible running through the right hand side of the pit



Plate 3: South facing section through ditch 104 in Trench 1



Plate 4: North facing section through ditch 104 in Trench 2



Plate 5: South facing section through ditch 104 in Trench 4

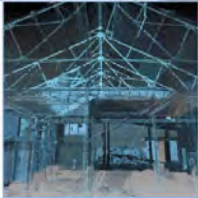


Plate 6: Aerial view of Cleaven Dyke and the development area from the south-east
(after RCAHMS DP 010863)



■ Development area

Plate 7: Aerial view of Cleaven Dyke and the development area from the east-south-east
(after RCAHMS DP 010864)



AOC Archaeology Group, **Edgefield Industrial Estate, Edgefield Road, Loanhead EH20 9SY**
tel: 0131 555 4425 **fax:** 0131 555 4426 | **e-mail:** admin@aocarchaeology.com

www.aocarchaeology.com