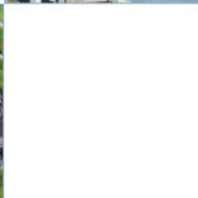
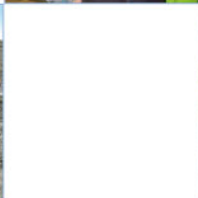
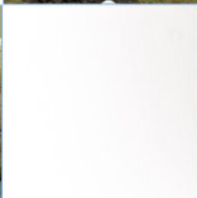
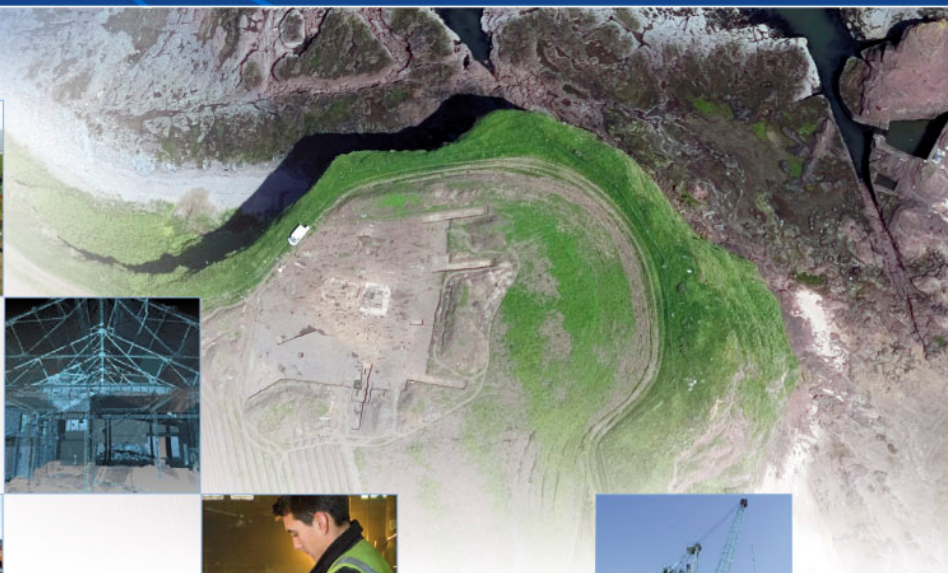
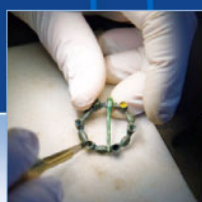


# South Street, Saint Andrews: Data Structure Report

AOC 20428  
July 2008



ARCHAEOLOGY

HERITAGE

CONSERVATION



## Contents

	<b>Page</b>
<b>List of illustrations .....</b>	<b>1</b>
<b>List of appendices .....</b>	<b>1</b>
<b>Abstract.....</b>	<b>2</b>
<b>1 Introduction.....</b>	<b>3</b>
1.1 Background .....	3
1.2 Site Location .....	3
1.3 Historical Background .....	5
1.4 Archaeological Background.....	5
<b>2. Objectives .....</b>	<b>6</b>
<b>3. Methodology .....</b>	<b>6</b>
<b>4. Results.....</b>	<b>7</b>
4.1 Introduction .....	7
4.2 Watching Brief Phase 1.....	9
4.3 Watching Brief Phase 2.....	11
4.4 Watching Brief Phase 3.....	11
<b>5. Discussion .....</b>	<b>20</b>
<b>Bibliography .....</b>	<b>21</b>
<b>Appendix 1 Context Register .....</b>	<b>23</b>
<b>Appendix 2 Photographic Register.....</b>	<b>29</b>
<b>Appendix 3 Sample Register .....</b>	<b>34</b>
<b>Appendix 4 Finds Register .....</b>	<b>35</b>
<b>Appendix 5 <i>Discovery &amp; Excavation in Scotland</i> Report.....</b>	<b>36</b>

## List of Illustrations

Figure 1:	Site Location
Figure 2:	Site Plan
Figure 3:	West-facing section through post-hole (08)
Figure 4:	Post-hole (08)
Figure 5:	South facing section through pit (12)
Figure 6:	Pit (12), post-excavation
Figure 7:	Plan of Kiln/Furnace in Room 1
Figure 8:	Kiln/Furnace (35) mid-excavation, looking south-west
Figure 9:	East-facing section through kiln/furnace (35)
Figure 10:	Kiln/Furnace (35) post-excavation, looking south
Figure 11:	Pit (28) post-excavation, looking north-east
Figure 12:	Room 2, looking north-east
Figure 13:	Plan showing featured in Room 2
Figure 14:	North-facing elevation of stone lining in pit (41)
Figure 15:	Clat lining (71) between pits (25) and (41), looking west
Figure 16:	South-facing section through fill of pit (41)
Figure 17:	Re-used ships mast and axel on top of Room 2, looking east

## List of Appendices

Appendix 1:	Context Register
Appendix 2:	Photographic Record
Appendix 3:	Sample Register
Appendix 4:	Finds Register
Appendix 5:	<i>Discovery &amp; Excavation in Scotland</i> Report

## **Abstract**

---

This report details the results of an Archaeological Watching Brief at 169-173 South Street, St. Andrews, Fife. During ground reduction works the remains of a single post-hole complete with packing stones and one large pit were recorded in the garden area to the rear of the property. Ground reduction also took place within a listed standing building, also to the rear of the property. During this phase of work three large rectangular stone-lined pits complete with stone flagged bases were also recorded. An assemblage of post-medieval pottery, bone and shell associated with these features was recovered.

# **1 Introduction**

## **1.1 Background**

- 1.1.1 AOC Archaeology Group was commissioned by Graham and Sibbald on behalf of their clients to undertake a programme of archaeological works on ground subject to redevelopment at South Street St. Andrews. The works were required as a condition of planning permission required by the local planning authority, Fife Council, who are advised on archaeological and heritage issues by Mr. Douglas Spiers of Fife Archaeology Unit. The works were carried out in accordance to a *Written Scheme of Investigation* (AOC 2007) prepared by AOC Archaeology Group and approved by Mr. Spiers on behalf of the planning authority and in accordance with the principles inherent in NPPG 5 (SOEnD 1994), PAN 42 (SOEnD 1994a) and NPPG 18 (SODD 1999). The archaeological works comprised a programme of Historic Building Recording (Level 1) and an Archaeological Watching Brief on all ground breaking associated with the development.

## **1.2 Site Location**

- 1.2.1 The development site lies at 169-173 South Street, St. Andrews, Fife and is centred on NGR NO 5070 1659 (Figure 1). It is situated on the northern side and toward the western end of South Street and is within the medieval burgh limits. Opposite the site are the upstanding remains of a Dominican monastery of the Black Friars Order. It is bounded to the east by Bell Street.

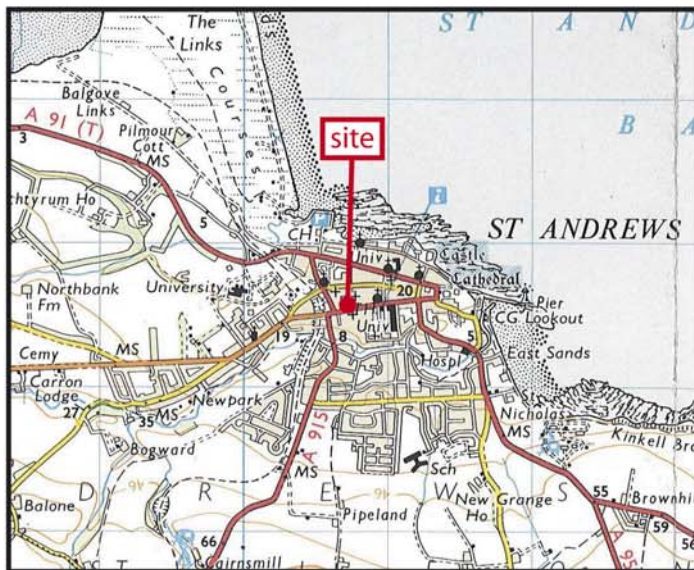
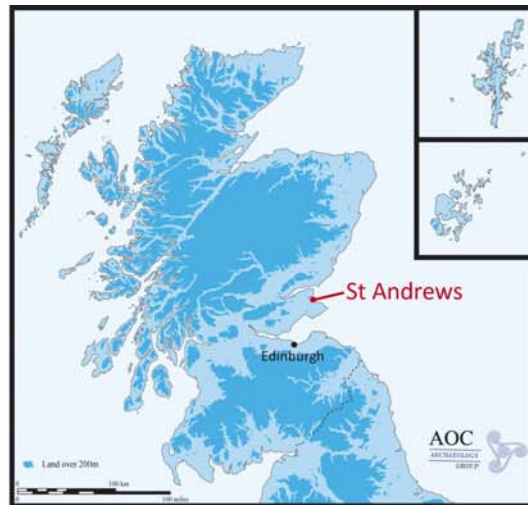


Figure 1: Site location

Reproduced from the Ordnance Survey 1:50000 scale map with the permission of the Controller of Her Majesty's Stationary Officer. Crown copyright. AOC Archaeology Group, Edgefield Industrial Estate, Loanhead, Midlothian, EH 20 9SY. OS Licence no. 100023757



**Figure 1: Site Location**



### 1.3 Historical Background

- 1.3.1 A number of historic maps and plans exist for the area under development. The earliest c.1580 (Geddy) shows the development area consisting of a two storey building upon the street frontage with a north to south strip of delineated backlands to the north. This backland is one of twenty-two shown on the map, all belonging to buildings which face onto South Street. Upon John Wood's *Plan of the City of St. Andrews* (c. 1780-1847) the area of development is shown as three buildings, 'L' shaped in plan with a small access alley or pend directly to the east. No backland division is shown. The easternmost building makes up the western side of the alley and is marked as owned by Mr Smart and the main street frontage is labelled as owned by Mr Paterson. The first Ordnance Survey map for this area dates from 1854 (published 1855) and shows a building separated into four internal spaces and a group of smaller out-buildings connected to the north. The backland consists of two long thin (north to south running) strips, with the westernmost containing six trees, possibly denoting an orchard. By the publication of the second edition Ordnance Survey map in 1893 the land under development appears to have contained up to nine buildings of varying size, but maintained an area of open garden toward the rear (north) of the buildings.

### 1.4 Archaeological Background

- 1.4.1 No direct evidence of prehistoric settlement has yet been discovered within the town of St Andrews. The only prehistoric material so far unearthed comprises of two Iron Age cist burials at Hallowhill and Kirkhill (Hall 1997).
- 1.4.2 There have been a number of archaeological investigations within the vicinity of the development site. Specifically on South Street these include:
- 101-103 Market Street (NMRS: NO51NW302); an excavation which uncovered garden soils, stone walls and two pits, one containing 17<sup>th</sup> century ceramics;
  - 118 South Street (NMRS: NO51NW314); a small archaeological investigation which uncovered possible medieval garden soils;
  - 129 South Street (NMRS: NO51NW57.01); a small trench excavated which revealed dark soils and plough furrows;
  - 191 South Street (NMRS: NO51NW85); an archaeological watching brief recorded deposits of garden soils.
- 1.4.3 To the rear of the development site, on Market Street, previous investigations include:
- 93 Market Street (NMRS: NO51NW434); an archaeological evaluation which discovered buried garden soils and medieval ceramics;



- 120-124 Market Street (*NMRS*: NO51NW58); an excavation which revealed a corn drying kiln, pits and associated ceramics dating from the 12<sup>th</sup> century;
- 125 Market Street (*NMRS*: NO51NW285); excavation produced building foundations, garden soils and midden deposits containing 13<sup>th</sup> and 14<sup>th</sup> century ceramics;
- 133 Market Street (*NMRS*: NO51NW319); test trenches discovered garden soils and pits with associated ceramics and coinage dating from the late 11<sup>th</sup> to the 19<sup>th</sup> century;
- 134 Market Street (*NMRS*: NO51NW59); archaeological deposits dating from the 13<sup>th</sup> to the 15<sup>th</sup> century were excavated. These included a possible timber structure, a corn-drying kiln, a well and two hearths.
- 137 Market Street (*NMRS*: NO51NW286); an evaluation uncovered a linear cut ditch, garden soils, evidence of iron smithing and associated ceramics dating from the 13<sup>th</sup> to 15<sup>th</sup> century.

1.4.4 South Street also contains five buildings of historical and archaeological significance dating from the 1800s. One of these (169 South Street (*NMRS*: NO51NW502) is included within the current development. The other are; No.167 (HB40901), No.171 (*NMRS*: NO51NW502), No.173 (*NMRS*: NO51NW501). The most prominent is however, Blackfriars Dominican Friary (*NMRS*: NO51NW5.01) which is located south-east of the development site and dates from the 16<sup>th</sup> century.

## 2. Objectives

2.1 The objectives of the archaeological works were;

- i) to undertake an appropriate scheme of historic building recording of specific elements of architectural interest occupying the site prior to its renovation;
- ii) to determine the character, condition, extent, quality and date of any archaeologically significant remains in the proposed development area;
- iii) given that significant archaeological deposits are discovered, the preparation of a mitigation strategy compliant with NPPG 5, NPPG 18 and PAN 42 will be undertaken

## 3. Methodology

3.1 All ground reduction was carried out using a 360° type tracked mini digger fitted with a toothless ditching bucket under the direct supervision of an experienced field archaeologist. Ground reduction was carried out in shallow spits until either the first archaeological horizon or natural geology was

encountered. All archaeological deposits and features were cleaned by hand and recorded according to AOC Archaeology Group's standard operating procedures. The archaeological works were carried out intermittently between 31<sup>st</sup> October 2007 and 22<sup>nd</sup> May 2008. The weather conditions during the works varied; however, it is considered that this did not compromise good archaeological visibility.

## **4. Results**

### **4.1 Introduction**

4.1.1 The programme of archaeological works can be divided into three phases. Phase 1; ground reduction within the open garden space at the rear of the property, Phase 2; underpinning works under the existing frontage buildings and Phase 3; ground reduction within the listed building behind the street frontage. The various data gathered from the evaluation are presented as a series of appendices:

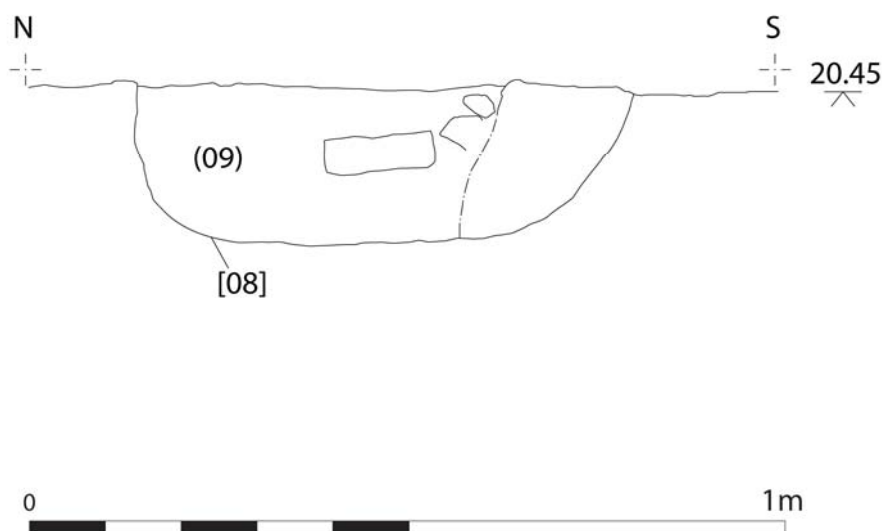
- i) Appendix 1 contains contains context summaries;
- ii) Appendix 2 contains the photographic register;
- iii) Appendix 3 contains the finds register;
- iv) Appendix 4 contains the sample register;
- iv) Appendix 5 reproduces the *Discovery & Excavation in Scotland* entry.



**Figure 2: Site plan**

## 4.2 Watching Brief Phase 1 (Figure 2)

- 4.2.1 Prior to ground reduction the open space to the rear of the investigation area was split by a single terrace. The higher area to the extreme rear had been used as garden space divided by a modern stone-built garden wall (03) aligned north to south. The lower area to the front of the terrace had been laid to concrete. Ground reduction showed that the garden topsoil (00) had a depth of 0.5 m and contained fragments of 19<sup>th</sup>/20<sup>th</sup> century pottery of which a small sample was retained (Find No. 1). This soil covered the whole extent of the raised area. The topsoil overlay a layer of compact light brown sandy silt (01) which was confined to the NW corner of the raised area and had a depth of 0.6 m. Pottery and bone fragments were recovered from this deposit (Find Nos. 2 & 3). This, in turn, overlay a compact dark brown sandy silt (02) ranging from 0.15 m thick in the NW corner up to 0.3 m thick elsewhere across the raised area and contained fragments of pottery and bone (Find Nos. 4 & 5). Natural compact orange brown sand (05) was exposed below soil (02).
- 4.2.2 Toward the front of the raised area was a single, sub-circular post hole (08) 0.7 m wide by 0.24 m deep which cut buried soil (02). (Figures 3 & 4). This was filled by a single deposit comprised of a moderately compact light-grey ashy silt (09) which contained a number of large angular stones, possibly packing stones, and a small amount of animal bone.

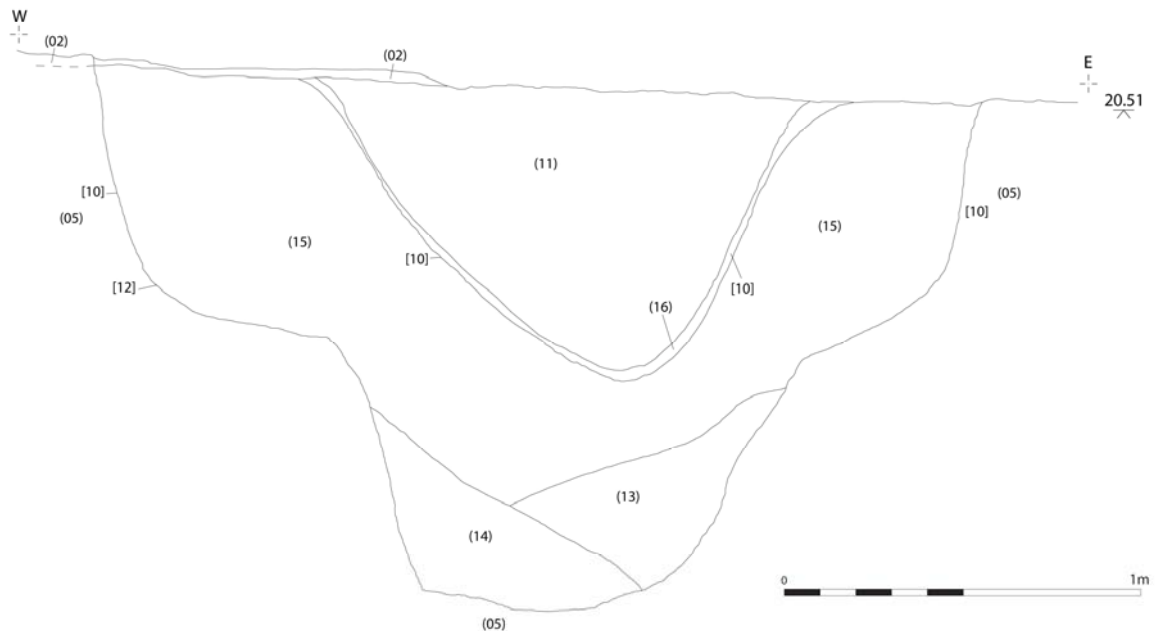


**Figure 3: West-facing section through post-hole (08)**

- 4.2.3 Below soil (02) and cutting the natural sand (05) was a large, deep conical pit (12: Figures 5 & 6). with a diameter of 2.5 m and a depth of 1.5 m. Contained within the pit were a number of fills (13), (14) and (15) from which ceramic sherds and bone fragments were recovered. In addition the pit had a recut (10) filled with fill (11).



**Figure 4: Post Hole (08)**



**Figure 5: South-facing section through pit (12)**

- 4.2.4 The area to the south of the terrace had been laid to concrete. Upon the removal of this the ground was reduced by an average of 0.82 m. This consisted of mid-brown silty topsoil upon sterile yellow sand (05).



**Figure 6: Pit (12) post excavation**

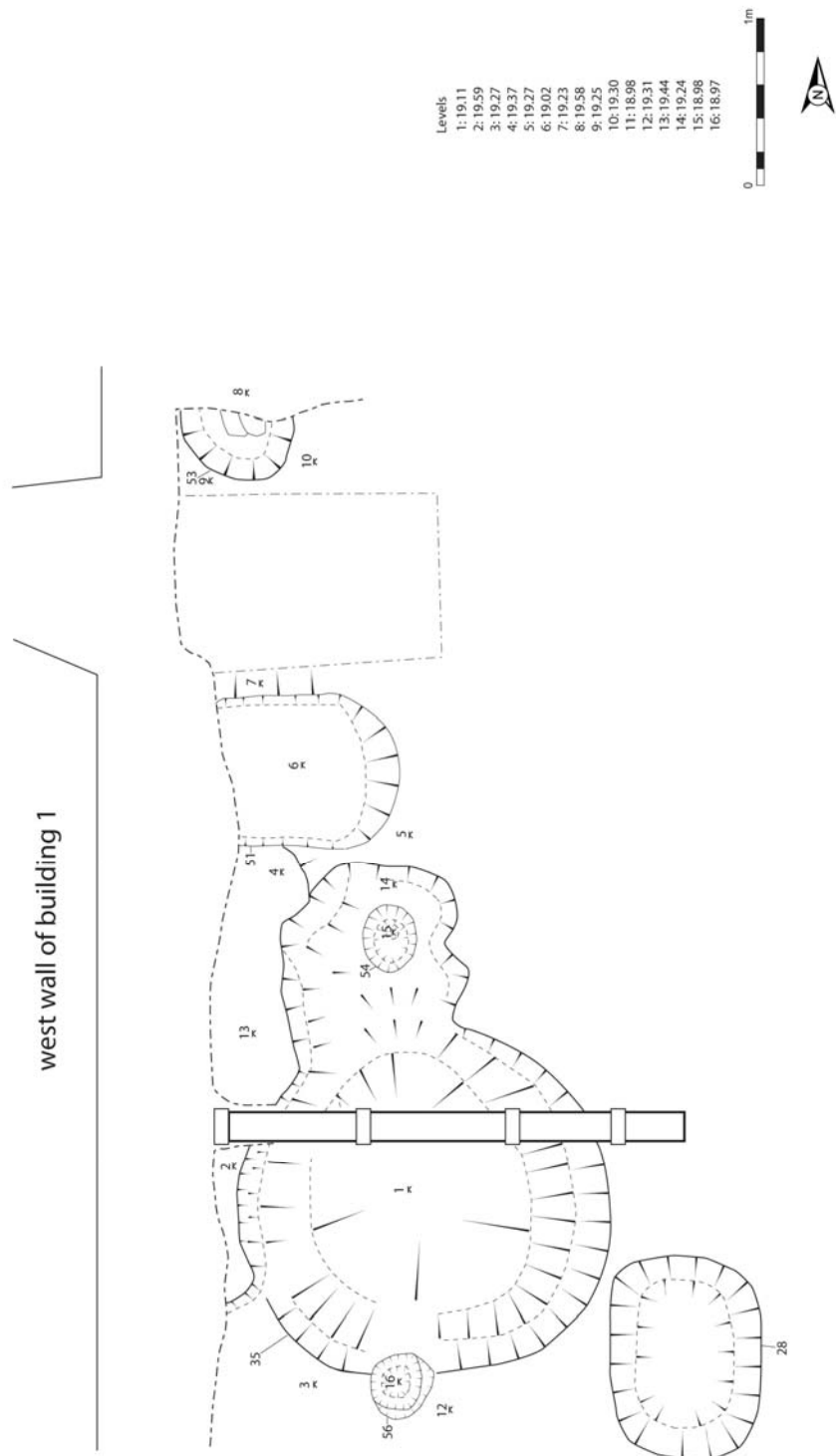
### **4.3 Watching Brief Phase 2**

- 4.3.1 Findings from the underpinning works on the existing building walls were sparse. At the south-east corner of Room 1 a sandstone wall (21) was uncovered. This wall appeared to be running north to south along the same orientation of the existing wall for a distance of 1.30 m and was 0.20 m wide. It stood to 5 or 6 courses with a height of 0.60 m. During the removal of this wall animal bone, ceramic and shell fragments were uncovered (Find Nos. 24, 25 & 26). Monitoring of all the other underpinning trenches revealed either sterile sand (05) or building debris (19) in the form of sand, cement, concrete and brick fragments. However, finds including ceramic and glass sherds (Find Nos. 17, 19 & 23), wood and metal fragments (Find Nos. 18 & 22) and a coin (Find No. 21) were retrieved from the building debris.

### **4.4 Watching Brief Phase 3**

- 4.4.1 Ground reduction within the building uncovered four archaeological features. These were located within two rooms, numbered Rooms 1 and 2 (see Figure 2). Room 1 to the south and Room 2 to the north.
- 4.4.2 Room 1 contained the remnants of a kiln or furnace (35) cut into the natural sand (05), with two associated post-holes (54 and 56) and a small pit to the south-east (28) (Figure 7).





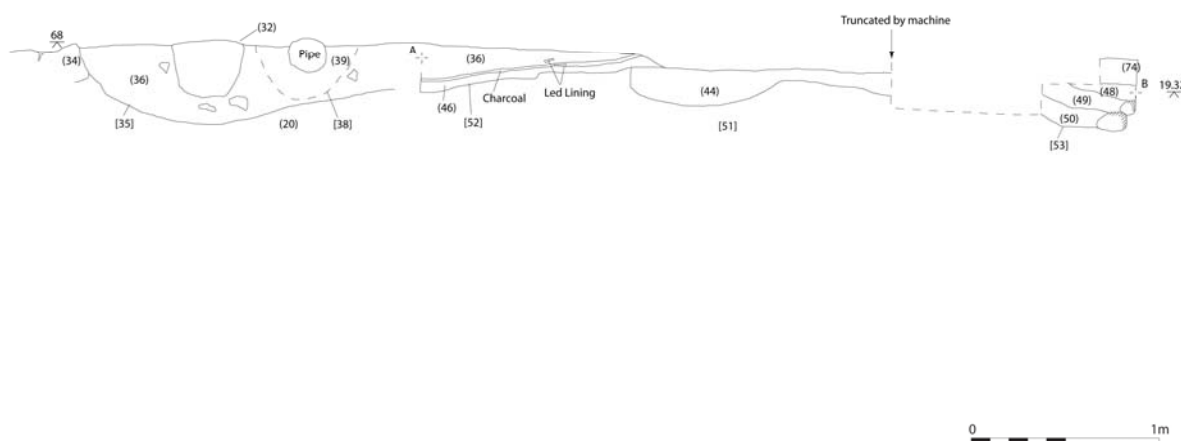
**Figure 7: Plan of Kiln/Furnace (36) in Room 1**





**Figure 8: Kiln/Furnace (35) mid-ex, looking south-west**

- 4.4.3 Kiln/furnace (35) measured 6.34 m north-south and from 0.41 m to 2.06 m east to west. It was key-hole shaped in plan with the bowl to the south and a linear flue running northwards. The bowl was truncated by a modern drainage pipe. The cut of the kiln/furnace had a maximum depth of 0.3 m in the bowl, shallowing to 0.2 m at the northern extent of the flue. The kiln/furnace bowl contained three archaeological deposits (Figures 8 & 9). These consisted of contexts (32), (34) and (36). Context (34) was a circular arrangement of single coursed, roughly faced and unbonded sandstone blocks (the blocks averaged 0.36 m by 0.20 m and stood to a height of 0.30 m). The main fill (36) consisted of a moderately compacted mid to light-brown silty clay with occasional charcoal flecks and chunks (<0.05 m dia) and occasional burnt clay chunks (<0.05 m dia). It measured 1.98 m east to west by 2.98 m north to south and was 0.38 m deep. Within this context (36) two sherds of green glaze pottery and a number of metal fragments were excavated. Also within this main fill, toward its southern side, a lens of dark grey/black charcoal rich soil was excavated (32). This lens measured 1.20 m east to west by 0.50 m north to south and was 0.03 m deep.
- 4.4.4 Context (36) continued beyond the cut of the bowl in a northerly direction into the kiln/furnace flue (51, 52 and 53). The cut of the flue measured 4 m north to south, was 1.24 m wide at its southern end and 0.56 m wide at its northern end. It appeared to continue under the building foundations of Room 1, both on its western side and on its northern edge. It had a maximum depth of 0.25 m at the south and 0.2 m at its north. The base of this flue was uneven and truncated by a modern machine cut at its northern end. The flue was filled by contexts (36), (44), (46), (48), (49), (50) and (74). The main fill of the flue was context (44), a moderately compact mid-brown sandy clay containing further sherds of metal. Context (44) underlay context (46) on its southern side, which in



**Figure 9: East-facing section through Kiln/Furnace (35)**

turn underlay context (36), the main fill of the bowl. Context (46) was a mid-brown silty clay containing occasional sandstone grit with a layer of charcoal upon its upper interface with context (36). To the north of the aforementioned truncated section, the kiln/furnace flue was filled with four deposits (48), (49), (50) and (74). Uppermost fill (74) was a baked red clay and (48), (49) and (50) were mid to dark brown silty clays containing heat-affected stone on their northernmost edge. It was however not possible to excavate fully contexts (44), (48), (49), (50) and (74) as these ran underneath the wall foundations of Room 1.

- 4.4.5 Upon excavation of the kiln/furnace base, two post-holes (54) and (56) were discovered (Figure 10). These were located at the southern edge of the bowl and at the northern edge of the bowl where it interfaced with the flue. Both were circular in plan with vertical sides and contained single fills of moderately compact light-brown sandy silt, (55) and (57), with a lens of dark brown sandy silt at the base of post-hole (54).



**Figure 10: Kiln/Furnace (35) post-ex, looking south**

- 4.4.6 To the south-west of the kiln/furnace bowl (35) an area of paving was excavated (31). This consisted of two large stone slabs set upon natural sand (05) creating a platform which measured 0.94 m north-east to south-west by 1.04 m north-west to south-east.
- 4.4.7 To the south-east of the kiln/furnace bowl (35) at a distance of 0.50 m was a large sub-rectangular pit (28) measuring 1.20 m north to south by 0.88 m east to west, with a maximum depth of 0.76 m (Figure 11). It contained a single fill (29) of moderately compacted mid-brown sandy clay with occasional charcoal chunks, two fragments of bone and a single ceramic sherd (Find Nos. 36 & 37).
- 4.4.8 Room 2 contained significant archaeological features in the form of three large stone-lined pits (Figures 12 & 13). These pits were however, only partially excavated as the lower parts were preserved *in situ* below the formation level of the current development. The pits were oriented north to south along the central axis of the rooms and were designated context numbers (47), (41) and (25) from north to south.

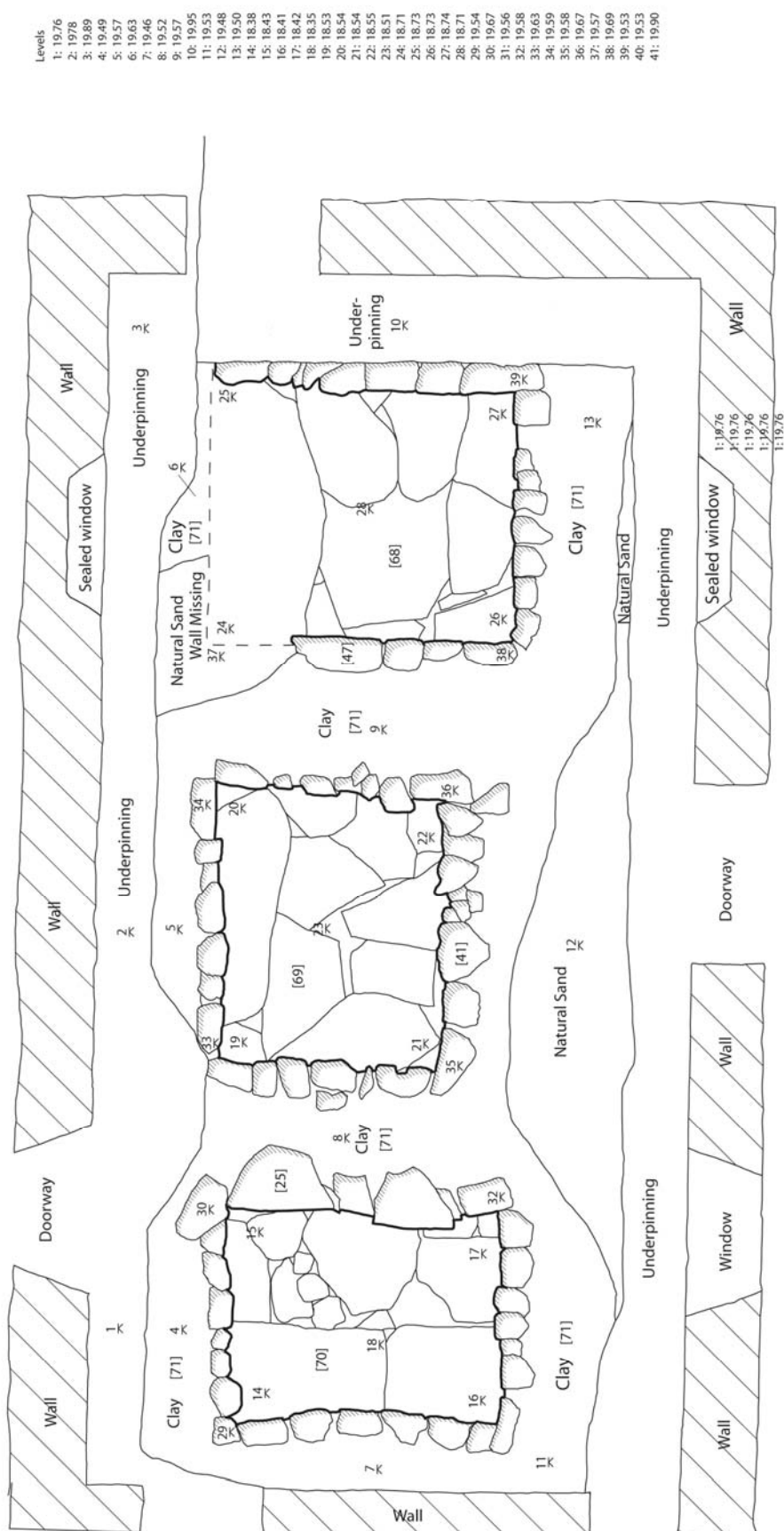




**Figure 11: Pit (28) post-excitation, looking north-east**



**Figure 12: Room 2, looking north-east**



4.4.9 All three pits were roughly square in plan, cut into the natural (05) and lined with roughly rectangular unfaced stones (the smallest being 0.15 m by 0.1 m and the largest being 0.70 m by 0.25 m). The stone lining stood to between 7 to 10 rough courses (Figure 14). Of particular note was a re-used broken quern stone (Find No. 75) set into the upper edge of the southern face of the central pit (41). Pit (25) measured 2.40 m north to south by 2.40 m east to west and had a maximum depth of 1.30 m, pit (41) measured 2.50 m north to south by 1.80 m east to west and had a maximum depth of 1.10 m and pit (47) measured 1.90 m north to south by 2.30 m east to west and had a maximum depth of 0.80 m. All three possessed stone flagged bases. These flagged bases underlay the stone lining of the walls suggesting they were laid prior to the construction of the walls.



**Figure 14: North facing elevation of stone lining in pit (41)**

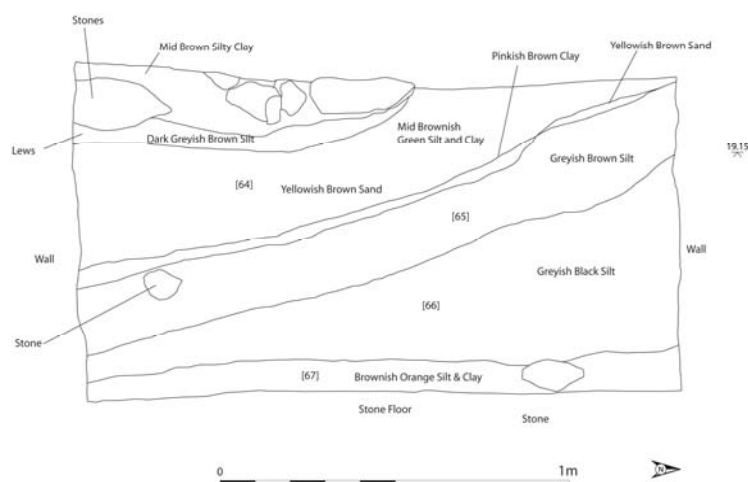
4.4.10 The pits were constructed within two large rectangular cuts. Pits (25) and (41) sat within cut (73) which measured 5.60 m north to south by 3.65 m east to west and was at least 1.50 m deep. Pit (47) sat 0.40 m to the north in cut (72) which measured 2.70 m north to south by 2.70 m east to west and had a depth of at least 1.50 m. The walls and base of both these cuts were lined with a sterile compact light pinky-brown clay (71), varying from between 1.10 m and 0.40 m in thickness (Figure 15). The stones used to line the pits were set within this clay, thus securing them in position.





**Figure 15: Clay lining (71) between pits (25) and (41), looking west. Note re-used broken quernstone in northern elevation of pit (41)**

4.4.11 All three stone lined pits contained two upper fills of general building debris (58, 59, 64, 65, 61 and 62), all of which contained fragments of ceramic, timber and brick (see Appendix 4). Below this in the southernmost pit (25) was a pale brown clayey silt (60) devoid of any material finds. However, the bottommost layers of both pits (41) and (47) were characterised by loose, organic dark greyey-black silts (63 and 66) and below this in central pit (41) a deposit of compacted orangey-brown silty clay. It was also possible to discern within central pit (41), east-sloping depositional plains (Figure 16) suggesting that material entered the pit either via the doorway located within the eastern wall of Room 2 or prior to the construction of Room 2.



**Figure 16: South-facing section through fill of pit (41)**



- 4.4.12 A ship's mast (Figure 17) was also recorded in Room 2. This was located towards the south on the top of the north to south oriented outer walls of the building and laid in an east-west direction. The timber was roughly circular in section and tapered from a diameter of 0.24 m at its eastern end to 0.18 m at its western end. Upon the timber were fixed three pulley wheels. One upon the underside of the timber on the west adjacent to a second storey window, and two set within the timber itself (one at the western end and one at the centre of the timber's length). Upon the western wall of Room 2 the timber sat upon what appeared to be an iron axle bar, which has been re-used as a window lintel. It is believed that this timber is a re-used ship's mast, the analysis of which is to be arranged by Fife Council Archeology Unit.



**Figure 17: Re-used ship's mast and axle on top of Room 2, looking east**

## **5. Discussion**

- 5.1 The discoveries made during this excavation are of archaeological and historical significance. Particularly those found within the buildings under development. The presence of a kiln/furnace adjacent to three large stone lined pits would suggest some form of industrial activity. Initial inspection of the ceramics (prior to specialist assessment) recovered from the excavation (specifically, green-glazed shards from sealed layers within the sites major features) dates this activity to some time in the late to post-medieval period. Furthermore, the presence of a re-used ship's mast within this industrial context would also tie the site to the wider historical maritime

landscape of St Andrews. The preservation *in situ* of the lower half of these pits retains these features for future generations.

- 5.2 Further archaeological investigation by the Fife Council Archaeological Service into the ship mast discovered at the site will also serve to further develop historical and archaeological knowledge pertaining to St Andrews.
- 5.3 This DSR report is both preliminary and provisional, with many issues raised by the excavation data still to be addressed. In ascertaining a fuller knowledge of the excavation results, a post-excavation research design will be prepared in conjunction with the planning authority's archaeological advisor.

## 6. Bibliography

- AOC (2007), *169-173 South Street, St. Andrews, Fife, Written Scheme of Investigation*, AOC Archaeology Group, Unpublished Client Document
- Hall, D. 1997. Introduction. In Rains, M.J. and Hall, D.W. (eds.). *Excavations in St Andrews 1980-89. A Decade of Archaeology in a Historic Scottish Burgh*. Tayside and Fife Archaeological Committee. Monograph One.
- Rains, M.J. and Hall, D.W. (eds.) (1997). *Excavations in St Andrews 1980-89. A Decade of Archaeology in a Historic Scottish Burgh*. Tayside and Fife Archaeological Committee. Monograph One.
- The Scottish Office Development Department (1999). National Planning Policy Guideline 18. *Planning and the Historic Environment*.
- The Scottish Office Environment Department (1994). *National Planning Policy Guideline 5. Archaeology and Planning*.
- The Scottish Office Environment Department (1994a). *Planning Advice Note 42. Archaeology – the Planning Process and Scheduled Ancient Monument Procedures*.

---

# **South Street, Saint Andrews: Data Structure Report**

## **Section 2: Appendices**

## Appendix 1

### Context Register

No.	Area	Description	Interpretation	Stratigraphically		Dimensions (m) as seen			
				Below	Above	L	W	H	D
00		Moderately compact black/dark-grey silt with occasional fragments of 19 <sup>th</sup> and 20 <sup>th</sup> century ceramic.	Garden topsoil	-	01	-	-	-	0.5
01		Compact light-brown sandy silt with occasional charcoal flecks. Only recorded in test-pit at NW corner of site. Also contained occasional ceramic and bone fragments.	Garden soil	00	02	-	-	-	0.6
02		Moderately compact dark-brown sandy silt with occasional stone fragments and bone and ceramic fragments	Garden soil	01	05	-	-	-	0.3
03		N to S oriented wall constructed of very roughly worked and coursed stones up to 0.4 by 0.3 by 0.3 m. Cement bonded with curved capstones on top. Foundation course built from large stones set at 90° to wall axis.	Garden wall	00	01	12	0.4	1.86	-
04		E to W oriented wall constructed of worked and roughly coursed stone (upper courses worked, lower buried courses roughly worked) between 0.25 by 0.10 by 0.15m and 0.66 by 0.10 by 0.21m. Cement bonded with cemented rubble core.	Modern garden wall	-	-	10.9	0.3	0.61	-
05		Compact orange-brown sand.	Natural	05	-	-	-	-	-
06		Concrete	Modern	-	07	-	-	-	-
07		Concrete	Modern	06	-	-	-	-	-
08		Sub-circular vertical cut with a concave base and filled by (09)	Small pit or post hole	09	05	-	0.7	-	0.24
09		Moderately compact light-grey, slightly ashy, silt containing 10% medium sized angular stones and larger stones (possible packing stones) around edge of fill.	Fill of pit (08)	01	08	0.7	0.7		0.24
10		Sub-circular cut with sloping sides and tapered base.	Pit	16	15	-	Ø1.3	-	0.8
11		Moderately compact dark-brown sandy silt (similar to context (02), with occasional small angular stones. Heavily mixed due to modern activity above.	Fill of pit (10)	02	10	1.3	1.3		0.7

12		Sub-circular cut with stepped sides and a flat base.	Pit	14	05	-	2.5	-	1.5
13		Moderately compact black organic silt.	Fill of pit (12)	15	14	0.25	0.25		0.5
14		Moderately compact mid-brown sandy clay.	Fill of pit (12)	13	12	0.25	0.25		0.5
15		Moderately compact mid-brown sandy silt with occasional small angular stones. Cut by Context (10)	Fill of pit (12)	10	13	0.25	0.25		1.1
16		Moderately compact mid-brown yellowy orange silty sand.	Wind blown sand fill of pit (10)	11	10	1.3	1.3		0.02
17		ENE to WSW oriented sandstone rubble wall (1 course visible). Constructed of unfinished sandstone rocks (0.1. by 0.40 m) and un-bonded. Recorded in small underpinning trench.	Wall	-	-	-	1	1.3	-
18		Compact pale-brown sandy mortar and concrete.	Floor within listed building.	-	19, 24	-	-	-	0.10
19		Sand and cement dust with inclusions of stone, concrete, brick and occasional wood fragments within listed building.	Debris layer	18	05	20.10	5.10	-	-
20		Orange Sand throughout entire site	Natural	05	-	-	-	-	-
21		Stone wall constructed of sandstone blocks (0.2 by 0.18 by 0.1 m). Recorded within underpinning trench UPT-H(2).	Wall	21, 19	05	1.3	0.2	0.6	-
22		Very compact brown clay with very occasional charcoal flecks and sea-shell inclusions.	Wall bonding/sealant	24	17, 23, 41	-	-	-	-
23		Square stone enclosure (1.6 by 1.6 m) formed by finished sandstone blocks (0.3 by 0.18 by 0.4 m). Four courses exposed during excavation with no obvious bonding material. The inner face of the structure was blackened.	Storage pit				1.6		
24		Very dark-grey/black sandy clay of varying compaction. Occurring in a thin layer over stone walls (17). Contains charcoal, ceramic, wood, shell, bone and patches of brown clay context (22).	Occupation layer/midden	18	20				0.2
25		Square stone enclosure formed by roughly faced, roughly rectangular blocks between 0.15 by 0.1 m and 0.65 by 0.25 m, laid in a string-course fashion. The stones are placed along the edge of a large rectangular cut which appears to be lined with clay. The N and S facing walls have generally larger, more rounded stones than the E and W facing walls. Excavated to a depth of between 8 to 10 courses.	Storage pit			2.4	2.4	1.3	
26									

27		Square stone enclosure formed by roughly faced blocks averaging 0.32 by 0.25 by 0.15 m, laid in a string-course fashion. The stones are placed along the edge of a large rectangular cut which appears to be lined with clay.				1.6	0.54		
28		Sub-rounded cut with vertical sides and a rounded base.	Cut of pit	29	20	-	0.9		0.76
29		Moderately compact mid-brown sandy clay with occasional charcoal chunks and occasional fine medium stones.	Fill of pit (28)		28				
30		Moderately compact mid-brown sandy loam.			31, 34, 20	4	5		0.10
31		Stone slabs laid in a rectangular arrangement to the SW of circular stone kiln bowl (34). Slabs measure up to 0.8 by 0.6 m.	Platform		20	0.94	1.04		
32		Very compact charcoal/coal rich lens of soil.			36	1.2	0.5		0.03
33		Loose red/reddish-brown sand with occasional fine charcoal flecks.	Burnt sand			0.45			0.05
34		Circular arrangement of single course of roughly square, un-faced and un-bonded, worked stone (0.58 by 0.26 by 0.75 m).	Kiln bowl	36	20, 35	1.55			
35		Circular cut with sloping sides and rounded base. Truncated by possible post-hole at northern edge and modern pipeline running E-W.	Kiln bowl	20	34	2.2			0.3
36		Mildly compact mid to light brown silty clay with occasional charcoal flecks and chunks (<0.05 m dia) and occasional burnt clay chunks (<0.05 m dia). This context was truncated upon its S by an earlier excavated slot-trench.	Kiln flue		44, 46	1	0.96		0.18
37		Very dark grey/black soil.				0.45	0.45		0.12
38		Cut of trench for modern ceramic drain.	Modern drain cut						
39		Fill of trench for modern ceramic drain.	Fill of modern drain cut	38					
40		Irregular deposit of stones near base of kiln bowl (34).	Possible modern tumble						
41		Square stone enclosure formed by roughly faced blocks between 0.2 by 0.1 m and 0.7 by 0.25 m, laid in a string-course fashion. The stones are placed along the edge of a large rectangular cut which appears to be lined with clay. Between 7 and 10 courses and the southern elevation contained a re-used broken quern stone.	Storage pit	64, 65, 66, 67		2.5	1.8	1.1	



42		Moderately compact dark-greyish brown sandy loam with frequent fine to medium charcoal fragments and occasional shell fragments and small stones. Appears in Area 1 at E side of context (41) and between contexts (41) and (27).	Occupation layer		20				0.21
43		Tightly packed stone deposit within context (41).	Rubble	24					
44		Moderately compact mid-brown sandy clay with occasional sandstone grit (<0.01 m dia) and occasional charcoal flecks. Full extent of this context is unknown as it runs under the modern underpinning in W and is truncated by modern machine cut in N. May be part of a larger feature which originally extended to the north.	Possibly part of kiln flue or separate kiln working activity.	46	51	0.40	1		0.15
45									
46		Moderately compacted mid-brown silty clay with very occasional small (<0.01 m dia) sandstone grit. This context was truncated upon its S by earlier excavated slot trench.	Possible clay lining	36		1	0.96		0.06
47		Stone lining of pit (rectangular in plan) constructed of roughly faced and rectangular blocks (smallest 0.2 by 0.1 m, largest 0.7 by 0.2 m). All blocks are laid upon their longest side, string-course fashion between 5 and 9 courses high. Bonded by the clay that lines the cut of pit.	Storage/rendering pit	61, 62, 63		1.9	2.3	0.8	
48		Moderately compacted mid-brown silty clay with occasional small sandstone grit (<0.01m dia) and occasional charcoal flecks. This deposit is truncated at it N extent by modern building underpinning and at its S by machine cut.	Kiln activity	47	49	0.6	0.6		0.1
49		Moderately compacted dark-brown to black silty clay with occasional charcoal chunks (<0.01 m dia). This deposit is truncated at N by modern underpinning and at S by machine cut. It has a single heat affected stone at its N extent.	Possibly N end of kiln flue, or separate firing episode	48	50	0.6	0.6		0.10
50		Moderately compacted mid-brown silty clay with very occasional small (<0.01 m dia) sandstone grit. This deposit is truncated at N by modern underpinning and at S by machine cut. It has a single heat affected stone at its N extent.	Possibly N end of kiln flue, or separate firing episode, i.e. continuation of context (46)	49	05	0.5	0.6		0.06
51		Rectangular shallow cut with vertical sides and an	Cut of possible kiln	44	05	1.2	1		0.2



		uneven flattish base.	flue						
52		Sub-rectangular shallow cut with sloping sides and uneven flattish base.	Cut of possible kiln flue	46	05	1	1		0.03
53		Circular cut with vertical sides and rounded base. Contained two packing stone at NE of base.	Post-hole	47, 48, 49, 50	05	-	0.5		0.2
54		Circular cut with sloping, almost vertical sides, and curved base.	Post-hole	55	05		0.4		0.28
55		Moderately compact light-brown sandy silt with occasional charcoal flecks and very occasional small stones (<0.02 m dia). Contained a lens of dark-brown sandy silt at base of cut.	Fill of post-hole (54)	35	54		0.4		0.28
56		Circular cut with vertical sides, and flattish base.	Post-hole	57	05	0.36	0.34		0.28
57		Moderately compact light-brown sandy silt with occasional small stone inclusions.	Fill of post-hole (56)		56	0.36	0.34		0.28
58		Pale brown silty-clay with small stone and gravel inclusions.	Upper fill of pit 25						
59		Mid to dark brown clayey-silt.	Middle fill of pit 25						
60		Pale brown clayey-silt.	Bottom fill of pit 25						
61		Moderately compact dark-grey black silty clay with frequent small stone inclusions (between 0.05 to 0.07 m).	Fill of pit (47)		62	1.9	2.3		0.3
62		Moderately compact decayed sandstone with frequent inclusions of small stones (<0.07 m dia).	Fill of pit (47)	61	63	1.9	2.3		0.5
63		Moderately compact dark-brown/black organic silty clay.	Fill of pit (47)	62	68	1.9	2.3		0.15
64		Moderately compacted mid-brown grey silty clay.	Fill of pit (41)	63	65	2.5	1.8		0.5
65		Moderately compact gray-brown silt with frequent stone inclusions (<0.15 m dia).	Fill of pit (41)	64	66	2.5	1.8		0.2
66		Moderately compact greyish-black silt.	Fill of pit (41)	65	67	2.5	1.8		0.5
67		Moderately compact brownish-orange silty clay with frequent stone inclusions (<0.05 m dia).	Fill of pit (41)	66	69	2.5	1.8		0.15
68		Large flat stone slab surface constructed of flat sub-rectangular stones (0.7 by 0.1 m to 0.19 by 0.8 m).	Base of pit (47)	63		1.9	2.3		
69		Large flat stone slab surface constructed of flat sub-rectangular stones (0.3 by 0.4 m to 1.9 by 0.6 m).	Base of pit (41)	67		1.7	2.2		
70		Large flat stone slab surface constructed of flat sub-rectangular stones (0.15 by 0.2 m to 1.3 by 0.9 m).	Base of pit (25)			1.8	2.25		
71		Compact light-brown to pink clay within the cuts of all three stone lined pits. This context was not fully excavated and is presumably designed to bond the	Lining/bonding of stone lined pits.	41, 47, 45		0.4			

		stone within the pits as well as make them watertight and prevent the collapse of the surrounding sand natural (05).							
72		Large square cut with vertical sides and a flat base. Truncated to a depth of 0.5 m at the SW corner. Not fully excavated as pits were partly preserved <i>in-situ</i> . Excavated to a depth of 3 stone courses.	Cut of pit	71	05	2.7	2.7		>1.5
73		Large rectangular cut with vertical sides and flat base, containing the southern-most and middle pits of the group of three. Not fully excavated as pits were partly preserved <i>in-situ</i> . Excavated to a depth of 3 stone courses.	Cut of pit	71	05	5.6	3.65		>1.5
74		Compact red-baked clay with occasional inclusions of sandstone grit (<0.01 m dia). This deposit was truncated at its S extent by machine and at its N by modern underpinning.	Kiln flue		48	0.5	0.4		0.1

## Appendix 2: Photographic Record

### Digital No. 1

No.	Area	Context	Description	From
1	Area A	-	Pre-ex, Area A	S
2	Area A	-	Pre-ex, Area A	S
3	Area A	-	Working view, Area A	N
4	Area A	-	Working view, Area A	SE
5	Area A	-	Working view, Area A	SW
6	Area A	-	Working view, Area A	SW
7	Area B	-	Pre-ex, Area B	SW
8	-	03	Wall, pre-demolition, east side	NE
9	-	03	Wall, pre-demolition, east side	NE
10	-	03	Wall, pre-demolition, south end	SE
11	-	03	Wall, pre-demolition, west side, north end	W
12	-	03	Wall, pre-demolition, west side, south end	SW
13	-	04	North face	N
14	-		General view after removal of context (00) and (03)	SW
15	-	02	General working view	E
16	-	08	Pre-ex of pit	S
17	-	08	Pre-ex of pit	S
18	-	08	Half-section of pit	S
19	-	08	Half-section of pit	W
20	-	08	Half-section of pit	W
21	-	08	After removal of context (09)	S
22	-	08	After removal of context (09)	E
23	-	10	Pit half-section 6	N
24	-	10	Pit half-section 6	N
25	-	12	Pit half-section 7	S
26	-	12	Pit half-section 7	S
27	-	12	Post-ex of pit	S
28	-	12	Post-ex of pit	W
29	-	12	Post-ex of pit	N
30	-	12	Post-ex of pit	E

### Digital No. 2

No.	Area	Context	Description	From
1-2	-	-	Registration	Various
3-7	1	-	Overview of Room 1 showing buried walls and collapse debris	S
8-10	-	-	Overview of foundation trench, pre-ex	S
11	-	-	Foundation Trench A	NE
12	-	-	Foundation Trench B	E
13-14	-	-	Brown clay in base of Trench B	NE/E
15	-	-	Trench D	W
16	-	-	Trench E	N
17-18	2	-	Possible pit in Room 2	SE
19-20	2	-	General views of Room 2	SE
21	2	-	Mid-ex of Pit in Room 2	SE
22-26	2	-	SE-facing section of Pit in Room 2	SE
27-29	2	-	Stone feature and Burnt feature	SE/SW
30-31	2	-	Pre-ex of Stone feature	SW
32-33	-	-	Pre-ex of Stone feature	N
34-35	-	-	Pre-ex of Stone feature	E
36-37	-	-	Burnt/Reddened area near stone feature	SW
38-39	-	-	N-facing section through possible ditch	N
40-41	-	33	SE-facing section through Burnt Spread (33)	SE
42-44	-	34	Mid-ex of circular stone feature (34)	E
45-46	1	-	Detail of S most pit	SW
47-48	1	-	Detail of middle pit	SW
49-50	1	-	Detail of N most pit	NE

51-52	1	-	Overview of all three pits	N
53-54	1	-	Overview of all three pits	S
55-56	2	-	E-facing section of circular feature	E
57-58	1	-	N-facing section of middle pit	N
59-60	1	-	W-facing section of southern most pit	W
61-62	1	-	W-facing section of N most pit	W
63-69	-	34	Post-ex of stone feature (34)	N/E/S

## Colour Slide / Black and White Print No. 1

Slide No.	Print No.	Area	Context	Description	From
1	-	-	-	Registration	
2	-	-	-	Pre-ex, NW end of site	S
3	1	-	-	Pre-ex, NW end of site	S
4	2	-	03	Wall prior to demolition, W side, N end	W
5	3	-	03	Wall prior to demolition, W side, N end	W
6	4	-	03	Wall prior to demolition, W side, S end	SW
7	5	-	03	Wall prior to demolition, W side, S end	SW
8	6	-	03	Wall prior to demolition, E side, N end	E
9	7	-	03	Wall prior to demolition, E side, N end	E
10	8	-	03	Wall prior to demolition, E side, S end	SE
11	9	-	03	Wall prior to demolition, E side, S end	SE
12	10	-	04	North face	N
13	11	-	04	North face	N
14	12	-	-	General view after removal of context (00) and (03)	SW
15	13	-	-	General view after removal of context (00) and (03)	SW
16	14	-	02	General view of N end of site	E
17	15	-	02	General view of N end of site	E
18	16	-	08	Pre-ex of pit and post-hole	S
19	17	-	08	Pre-ex of pit and post-hole	S
20	18	-	08	Half-section no. 4 of post-hole showing (09)	S
21	19	-	08	Half-section no. 4 of post-hole showing (09)	E
22	20	-	08	Half-section no. 4 of post-hole showing (09)	E
23	21	-	08	Post-ex of post-hole (08)	S
24	22	-	08	Post-ex of post-hole (08)	S
25	23	-	08	Post-ex of post-hole (08)	E
26	24	-	08	Post-ex of post-hole (08)	E
27	25	-	10	Partial section following removal of (11)	N
28	26	-	10	Partial section following removal of (11)	N
29	27	-	12	Section no. 6	S
30	28	-	12	Section no. 6	S
31	29	-	12	Post-ex of pit (12)	S
32	30	-	12	Post-ex of pit (12)	S
33	31	-	12	Post-ex of pit (12)	E
34	32	-	12	Post-ex of pit (12)	E

## Colour Slide / Black and White Print No.2

Slide No.	Print No.	Area	Context	Description	From
1	1	-	-	Registration	
2	2	-	-	Post-ex of UPT-N	E
3	3	-	-	Post-ex of UPT-O	NW
4	4	-	-	Underpinning S Section E Wall	S
5	5	-	-	Underpinning S Section W Wall	S
6	6	-	-	Underpinning S Section E Wall	N
7	7	-	-	Underpinning S Section W Wall	N
8	8	-	-	Underpinning N Section E Wall	S
9	9	-	-	Underpinning N Section W Wall	S
10	10	-	-	Underpinning N Section E Wall	N
11	11	-	-	Underpinning N Section W Wall	N

12	12	-	-	Site and listed building	NE
13	13	-	-	Site and listed building	NW
14	14	-	-	Site and listed building	SW
15	15	-	-	Site and listed building	N
16	16	-	-	Section 7	E
17	17	-	-	S of site, post-ex of concrete	S
18	18	-	-	Post-ex UPT-P	E
19	19	-	-	Post-ex UPT-Q (inside)	E
20	20	-	-	Post-ex UPT-Q (outside)	W
21	21	-	-	Post-ex UPT-R	W
22	22	-	-	Post-ex UPT-S	S
23	23	-	-	Work to S of listed building	W
24	24	-	-	UPT-D1	SE
25	25	-	-	UPT-D2	SE
26	26	-	-	Post-ex UPT-T	W
27	27	-	-	Post-ex UPT-U (inside)	E
28	28	-	-	Post-ex UPT-V	W
29	29	-	-	Post-ex UPT-W	S
30	30	-	-	Post-ex UPT-X	N
31	31	-	-	UPT's D1 and D2, concrete fills	W
32	32	-	-	Post-ex UPT-Y	S
33	33	-	-	UPT-B (concreted)	E
34	34	-	-	UPT-H (concreted)	S
35	35	-	-	UPT-D (concreted)	S

## Colour Slide / Black and White Print No.3

Slide No.	Print No.	Area	Context	Description	From
-	-	-	-	Registration	
1	-	-	-	Post-ex UPT-X	E
2	-	-	-	Post-ex UPT-D1	E
3	-	-	-	Post-ex UPT-E (2)	W
4	-	-	-	Post-ex UPT-A (2)	W
5	-	-	-	Post-ex UPT-B (2)	W
6	-	-	-	Post-ex UPT-C (2)	E
7	-	-	-	Post-ex UPT-F (2)	E
8	-	-	-	Trench aligned E-W in Area C	W
9	-	-	-	Post-ex UPT-G (2)	E
10	-	-	-	Post-ex UPT-H (2)	W
11	-	-	-	Trench in Area C	E
12	-	-	-	Post-ex UPT-I (2)	W
13	-	-	-	Post-ex UPT-J (2)	E
14	-	-	-	Post-ex UPT-K (2)	W
15	-	-	-	Post-ex UPT-P (2)	W
16	-	-	-	Post-ex UPT-N (2)	E
17	-	-	-	Post-ex UPT-M (2)	E
-	-	-	-	Post-ex UPT-O (2)	SE
18	-	-	-	Concrete broken in S Section of listed building	NW
19	-	-	-	Concrete stripped area in S Section of listed building	N
20	-	-	-	Post-ex UPT-P (2)	W
-	-	-	-	Post-ex UPT-Q (2)	S

## Colour Slide / Black and White Print No.4 (Missing)

Slide No.	Print No.	Area	Context	Description	From
1	1	-	-	Registration	
2	2	-	-	Excavation of foundation Trenches	
3	3	-	-	Trench D	W
4	4	-	-	Trench E	N
5-6	5-6	-	-	W-facing Section of Trench C	W

7-8	7-8	-	-	Possible pit in Room 2 of listed building	SE
9-10	9-10	-	-	SE-facing Section of pit in Room 2	SE
11-12	11-12	2	34	Pre-ex of stone feature	SW
13-14	13-14	2	34	Pre-ex of stone feature	N
15-16	15-16	2	-	N facing Section through ditch	N
17-18	17-18	2	34	Mid-ex of circular stone feature	E
19-20	19-20	1	-	Pre-ex of southernmost pit	SW
21-22	21-22	1	-	Pre-ex of middle pit	SW
23-24	23-24	1	-	Pre-ex of northernmost pit	NE
25-26	25-26	1	-	Overview of Room 2 showing three pits	N
27-28	27-28	1	-	Overview of Room 2 showing three pits	S
29-30	29-30	2	-	E-facing Section of circular feature	E
31-32	31-32	1	-	N- facing Section of middle pit	N
33-34	33-34	1	-	W- facing Section of southernmost pit	W
35-36	35-36	1	-	W-facing section of northernmost pit	W
37-38	37-38	2	34	Post-ex of stone feature	

## Colour Slide / Black and White Print No.5

Slide No.	Print No.	Area	Context	Description	From
1-2	1	-	-	Registration	
3-4	2-3	1	41	Overview of Section of stone lined pit	N
5-6	4-5	1	41	Detail of base of stone lined pit	W
7-8	6-7	1	41	Section of stone lined pit	S
9-10	8-9	2	-	N end of kiln flue	S
11-12	10-11	2	-	N end of kiln flue	N
13-14	12-13	1	42	Section of stone lined pit	E
15-16	14-15	1	42	Detail of pit	S
17-18	16-17	1	42	Detail of pit	N
19	18	1	-	Work in progress	N
-		2	36, 44	Section of stone lined pit	E
-		2	36, 44	Section of stone lined pit	S
-		2	44	Section of stone lined pit	E
-		2	44	Section of N end of stone lined pit, truncated by underpinning	NW
20-21	19-24	2	36	Section showing remnants of led lining	W
22-27	25-30	2	36	N Section showing post hole/circular feature at base	W
28-32	31-35	2	36	N Section section of kiln flue 36	W

## Colour Slide / Black and White Print No.6

Slide No.	Print No.	Area	Context	Description	From
1-2	1	-	-	Registration	
3-4	2-3	2	25	Section of stone lined pit	E
5-6	4-5	2	25	Overview of stone lined pit	N
7-8	6-7	2	25	Overview of stone lined pit	S
9-10	8-9	1	51, 52, 53	Pre-ex of kiln flue	S
11-12	10-11	1	51, 52, 53	Pre-ex of kiln flue	N
13-14	12-13	1	35	Post-ex of kiln bowl	S
15-16	14-15	1	35	Post-ex of kiln bowl	Ne
17-18	16-17	1	54	Pre-ex of post-hole	E
19-20	18-19	1	54	Section of post-hole	E
21-22	20-21	2	-	Slab base of northernmost pit	W
23-24	22-23	2	-	Slab base of northernmost pit	E
25-26	24-25	2	-	E facing wall of northernmost pit	E
27-28	26-27	2	-	S facing wall of northernmost pit	S
29-30	28-29	2	-	W facing wall of northernmost pit	W
31-32	30-31	2	-	N facing wall of northernmost pit	N
33-34	32-33	1	54	Post-ex of post-hole	E
35-36	34-35	1	56	Pre-ex of post-hole	N

## Colour Slide / Black and White Print No.7

Slide No.	Print No.	Area	Context	Description	From
1-2	1	-	-	Registration	
3-4	2-3	1	56	NW facing Section	NW
5-6	4-5	1	56	Post-ex of post-hole	NW
7-8	6-7	1	47, 48, 49, 50	S facing Section	S
9-10	8-9	1	35, 54, 56	Post-ex of kiln	N
11-12	10-11	1	35, 54, 56	Post-ex of kiln	S
13-15	12-14	1	35, 54, 56	Post-ex of kiln	NE
16-17	15-16	2	25, 41	Clay lining between southernmost and middle pit	E
18-19	17-18	2	41, 47	Clay lining between northernmost and middle pit	SE
20-21	19-20	2	47	Post-ex of northern-most pit	SE
22-23	21-22	2	41	Post-ex of central pit	E
24-25	23-24	2	25	Post-ex of southernmost pit	NW
26-27	25-26	2	-	View of all three stone lined pits	N
28-29	27-28	2	-	View of all three stone lined pits	S
30-31	29-30	2	41	Stone slab base of middle pit	E
32-33	31-32	2	41	Stone slab base of middle pit	W
34-35	33	2	25	Stone slab base of southernmost pit	W

## Colour Slide/ Black and White Print No.8

Slide No.	Print No.	Area	Context	Description	From
1-2	-	-	-	Registration	
3-4	-	2	-	Stone slab base of southernmost pit	E
5-6	-	2	-	N elevation of middle pit	S
7-8	-	2	-	N elevation of middle pit	W
9-10	-	2	-	N elevation of middle pit	N
11-12	-	2	-	N elevation of middle pit	E
13-14	-	2	-	N elevation of southernmost pit	S
15-16	-	2	-	N elevation of southernmost pit	W
17-18	-	2	-	N elevation of southernmost pit	N
19-21	-	2	-	N elevation of southernmost pit	E
22-24	-	2	-	Removal of upper three courses of stone lined pits	N
25-26	-	2	-	Clay lining and natural between northernmost and central pits	E
27-28	-	2	-	Clay lining and natural between northernmost and central pits	SE
29-30	-	2	-	Northern-most pit after removal of upper three courses	N
31-32	-	2	-	Truncation in SW corner of northernmost pit	NE
33-34	-	2	-	Middle pit after removal of upper three courses	NW
35-36	-	2	-	E elevation of central pit after removal of upper three courses, showing natural and excavation cut	NW

## Colour Slide / Black and White Print No.9

Slide No.	Print No.	Area	Context	Description	From
1-2	1-2	-	-	Registration	
3-4	3-4	2	-	Northern-most and central pits after removal of upper three courses	SW
5-6	5-6	2	-	Clay and stone between southernmost and central pit	
7-8	7-8	2	-	Southern-most pit after removal of upper three courses	NW
9-10	9-10	2	-	E elevation of southern-most pit showing clay lining	W

## Colour Slide No.10

Slide No.	Area	Context	Description	From
1	2	-	Ships mast	SW



2	2	-	Ships mast	SW
3	2	-	Ships mast, west end	N
4	2	-	Ships mast, west end	NW
5	2	-	Ships mast, west end	N
6	2	-	Ships mast	NE
7	2	-	Ships mast	NE
8	2	-	Ships mast	E
9	2	-	Ships mast	E
10	2	-	Ships mast, west end	NW
11	2	-	Ships mast, west end	NW
12	2	-	Ships mast	W
13	2	-	Ships mast	W
14	2	-	Ships mast	W
15	2	-	Ships mast	W
16	2	-	Ships mast	W
17	2	-	Ships mast	W

## Black and White Print No.10

Print No.	Area	Context	Description	From
1	2	-	Ships mast, west end	SW
2	2	-	Ships mast, west end	SW
3	2	-	Ships mast	W
4	2	-	Ships mast	W
5	2	-	Ships mast, west end	NW
6	2	-	Ships mast, west end	NW
7	2	-	Ships mast, east end	E
8	2	-	Ships mast	E
9	2	-	Ships mast, east end	SE
10	2	-	Ships mast, east end	SE
11	2	-	Ships mast, west end	NE
12	2	-	Ships mast, west end	NE
13	2	-	Ships mast, west end	N
14	2	-	Ships mast, west end	N
15	2	-	Ships mast, west end showing fittings	NW
16	2	-	Ships mast, west end showing fittings	NW

## Appendix 3: Sample Register

No.	Area	Context	Description
1	External	09	Bulk soil
2	External	11	Bulk soil
3	Room 1	13	Bulk soil
4	External	14	Bulk soil
5	External	15	Bulk soil
6	Room 1	22	Bulk soil
7	Room 1	24	Bulk soil
8	Room 2	29	Bulk soil
9	Room 2	30	Bulk soil
10	Room 2	36	Bulk soil
11	Room 2	37	Bulk soil
12	Room 1	42	Bulk soil
13	Room 1	44	Bulk soil
14	Room 1	46	Bulk soil

15	Room 1	47	Bulk soil
16	Room 1	48	Bulk soil
17	Room 1	49	Bulk soil
18	Room 1	50	Bulk soil
19	Room 2	51	Bulk soil
20	Room 1	55	Bulk soil
21	Room 1	57	Bulk soil
22	Room 2	60	Bulk soil
23	Room 2	63	Bulk soil
24	Room 2	67	Bulk soil

#### Appendix 4: Finds Register

No.	Context	Description
1	00	Ceramic
2	01	Ceramic
3	01	Bone
4	02	Bone
5	02	Ceramic
6	02	Shell
7	09	Bone
8	00/01	Bone
9	00/02	Ceramic
10	11	Ceramic
11	11	Bone
12	11	Iron
13	13	Bone
14	13	Ceramic
15	15	Ceramic
16	15	Bone
17	19	Ceramic, 1 sherd
18	19	Wood, 5 worked pieces
19	19	Glass, 2 bottle top
20	19	Ceramic, 1 sherd
21	19	Coin
22	19	Metal, 1 piece
23	19	Ceramic, 23 sherds
24	21	Bone, 6 pieces
25	21	Ceramic, 3 sherds
26	21	Shell, 6 pieces
27	24	Bone, 1 rib
28	24	Leather, 1 belt
29	24	Glass, 3 sherds
30	24	White Glaze Ceramic, 2 sherds of handle
31	24	Brown Glaze Ceramic, 5 sherds
32	24	Ceramic, 7 sherds
33	24	Bone, 1 piece
34	24	Cream Ceramic. 2 sherds
35	24	Ceramic, 1 clay pipe
36	29	White Gritty Ceramic, 1 sherd
37	29	Bone, 2 pieces
38	29	Charcoal
39	36	Green Glaze Ceramic, 1 piece
40	58	Wood, 2 pieces
41	58	Copper, 1 piece
42	59	Ceramic, 1 pipe bowl
43	60	Shell
44	59	Bone, animal skull pieces
45	58	Shell, 4 pieces
46	58	Bone, 15 pieces

47	58	Ceramic, 1 pipe bowl and 1 sherd
48	44	Metal, possible kiln lining
49	36	Metal, possible kiln lining
50	44	Shell and bone, 5 pieces
51	58	Shell and bone, 8 pieces
52	58	Brown Glaze Ceramic, 1 sherd
53	58	Brick and tile, 2 pieces
54	60	Shell
55	59	Ceramic, pipe stem
56	59	Shell and bone, 9 pieces
57	61	Green Glaze Ceramic, 1 sherd
58	62	Ceramic, 3 sherds
59	62	Bone, 1 tooth
60	62	Shell, 1 piece
61	65	Bone, 2 pieces
62	65	Slag, 1 piece
63	65	Ceramic, 1 sherd
64	67	Bone, articulated skeleton of small mammal
65	64/65/66	Wood, 4 pieces
66	64/65/66	Shell, 25 pieces
67	64/65/66	Bone, 25 pieces
68	64/65/66	Ceramic, 16 sherds
69	64/65/66	Leather, 1 piece of possible shoe
70	64/65/66	Metal, 7 pieces
71	64/65/66	Glass, 3 sherds
72	64/65/66	Copper, 3 pieces
73	36	Relief Patterned Green Glaze Ceramic, 1 sherd
74	Unstratified	Ceramic, stamped clay pipe
75	25	Quern stone.

## Appendix 5: *Discovery & Excavation in Scotland* Report Entry

<b>LOCAL AUTHORITY:</b>	Fife Council
<b>PROJECT TITLE/SITE NAME:</b>	169-173 South Street, St Andrews
<b>PROJECT CODE:</b>	20428
<b>PARISH:</b>	St. Andrews
<b>NAME OF CONTRIBUTOR:</b>	Daniel Rhodes
<b>NAME OF ORGANISATION:</b>	AOC Archaeology Group
<b>TYPE(S) OF PROJECT:</b>	Watching Brief
<b>NMRS NO(S):</b>	None
<b>SITE/MONUMENT TYPE(S):</b>	None
<b>SIGNIFICANT FINDS:</b>	None
<b>NGR</b> (2 letters, 6 figures)	NO 507 165
<b>START DATE</b> (this season)	31 <sup>st</sup> October 2007
<b>END DATE</b> (this season)	22 <sup>nd</sup> May 2008
<b>PREVIOUS WORK</b> (incl. DES ref.)	None
<b>MAIN (NARRATIVE) DESCRIPTION:</b> (May include information from other fields)	A watching brief was undertaken during ground-breaking works associated with a residential re-development. Monitoring recorded a single post hole complete with packing stones and one large pit in the garden area to the rear of the property. Ground reduction also took place within a listed standing building, also to the rear of the property. Here three large rectangular stone-lined pits complete with stone flagged bases were also recorded. A large amount of post-medieval pottery, bone and shell was recovered from these features. No significant features were seen during the underpinning of the existing South Street frontage buildings.
<b>PROPOSED FUTURE WORK:</b>	None
<b>CAPTION(S) FOR ILLUSTRS:</b>	Figure 1: Stone-lined pits Figure 2: Plan of Stone-lined pits
<b>SPONSOR OR FUNDING BODY:</b>	Graham and Sibbald
<b>ADDRESS OF MAIN CONTRIBUTOR:</b>	AOC Archaeology Group Edgefield Road Industrial Estate Loanhead Midlothian EH20 9SY
<b>EMAIL ADDRESS:</b>	admin@aocscot.co.uk
<b>ARCHIVE LOCATION</b>	Archive to be deposited in NMRS



**AOC Archaeology Group**, Edgefield Industrial Estate, Edgefield Road, Loanhead EH20 9SY  
 tel: 0131 440 3593 | fax: 0131 440 3422 | e-mail: [edinburgh@aocarchaeology.com](mailto:edinburgh@aocarchaeology.com)

[www.aocarchaeology.com](http://www.aocarchaeology.com)