

Editor

Clive Orton

Assistant Editor

Märit Gaimster

Features Editor

Becky Wallower

Secretary / Advertising

Becky Wallower

Managing Editor

Peter Rowsome

ISSN number

0024-5984

SUBSCRIPTIONS

£16 post free UK or Europe, £25 rest of world, for four issues per year

Contact

Dr Jo Udall
Membership Secretary
63 Dinmont House
Pritchard's Road
London E2 9BW

Subscribe or renew your subscription online at the CBA Online Shop:
www.britarch.ac.uk/shop

London Archaeologist

is published quarterly by the London Archaeologist Association
44 Tantallon Road
London
SW12 8DG

Registered charity number 262851

Design Adviser

Tracy Wellman

Printed by

Charlesworth Group
Wakefield

Website

www.londonarchaeologist.org.uk

Commentary

174 *Gromaticus*

Features

189 ***In Context:*** Finding a niche

Becky Wallower interviews Jackie Keily and Stuart Brookes

197 ***Report preview:*** Feeding the Navy

Ian Grainger describes investigations into the Royal Navy's first victualling yard

Research

175 THE BATTERSEA CHANNEL

Investigations of a possible former course of the Thames

Mike Morley

182 THE ARCHAEOLOGY OF ANGLO-JEWRY IN LONDON, 1656–C. 1850

A survey of the surviving evidence

Kenneth Marks

191 THE MESOLITHIC LANDSCAPE IN THE WANDLE VALLEY

Excavations in Merton shed light on a lost landscape

Craig J. Halsey and Rob Scaife

Reviews

198 Book reviews

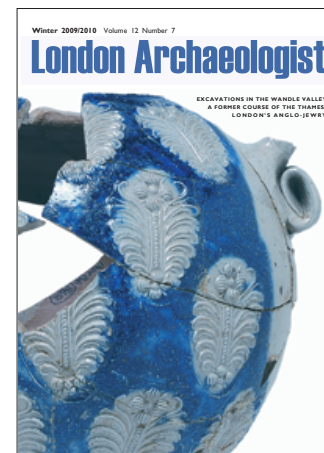
News

200 Mosaic

Diary

Inside back cover

Diary



Front cover

Westerwald stoneware jug with all-over applied floral motif from the Royal Navy victualling yard site at East Smithfield. It features in a forthcoming report from Museum of London Archaeology, previewed on page 197.

Photograph © MOLA