

Editor

Clive Orton

Assistant Editor

Märit Gaimster

Features Editor

Becky Wallower

Secretary

Becky Wallower

Advertising

Patrizia Pierazzo

Managing Editor

Peter Rowsome

ISSN number

0024-5984

SUBSCRIPTIONS

£16 post free UK or Europe, £25 rest of world, for four issues per year

Contact

Dr Jo Udall

Membership Secretary

63 Dinmont House

Pritchard's Road

London E2 9BW

Subscribe or renew your subscription online at the CBA Online Shop: www.britarch.ac.uk/shop

London Archaeologist

is published quarterly by the London Archaeologist Association
44 Tantallon Road
London
SW12 8DG

Registered charity number 262851

Design Adviser

Tracy Wellman

Printed by

Charlesworth Group
Wakefield

Website

www.londonarchaeologist.org.uk

Commentary

- 286 Commentary
Gromaticus

Features

- 298 **Report preview:** Babe Ruth's bath-house
Victoria Ridgeway previews a report on the excavation of the Roman settlement at Shadwell
- 301 **Findspot:** Strange sherds from Cheam
Clive Orton discusses some odd finds from an old excavation
- 304 **Obituary:**
Lyn Blackmore, Ian Blair and Jackie Keily pay tribute to the life and work of Penny MacConnoran

Research

- 287 LONDON'S TOP SECRET
London's oldest prehistoric structure
Gustav Milne, Nathalie Cohen and Jon Cotton
- 290 ARCHAEOLOGICAL FINDINGS AT THE SITE OF THE ST PANCRAS BURIAL GROUND AND ITS VICINITY
Large-scale excavations at St Pancras International
Phil Emery and Pat Miller
- 299 THE COWLEY HOLE – WHAT IS IT?
The excavation of a mystery feature
Colin Bowlt and Ken Pearce
- 305 A RETURN TO CRYSTAL PALACE STATION
Recording historic buildings in advance of refurbishment
David Sorapure and Michael Tetreau

Reviews

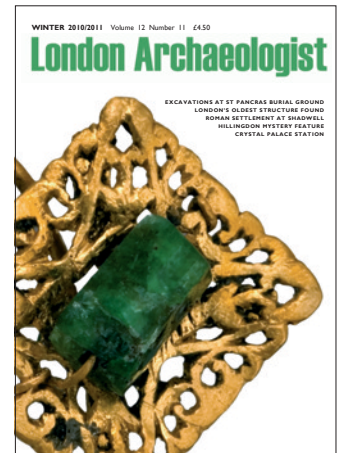
- 302 Book reviews

News

- 312 Mosaic

Diary

- Inside back cover Diary



Front cover

A gold ear-ring is one of a wealth of finds and features found in excavations of a Roman settlement in Shadwell, east London. The discoveries are discussed in a forthcoming report from Pre-Construct Archaeology, previewed on p 298. The ear-ring has filigree decoration with a hexagonal section green glass bead. It was recovered from above a fourth century clay-and-timber building to the north of the bath house at Babe Ruth's restaurant.