

**Editor**  
Clive Orton

**Features Editor**  
Becky Wallower

**Secretary/Advertising**  
Becky Wallower

**Managing Editor**  
Peter Rowsome

**ISSN number**  
0024-5984

**SUBSCRIPTIONS**

£16 post free UK or Europe, £25 rest of world, for four issues per year

**Contact**

Dr Jo Udall  
Membership Secretary  
63 Dinmont House  
Pritchard's Road  
London E2 9BW

Subscribe or renew your subscription online at the CBA Online Shop: [www.britarch.ac.uk/shop](http://www.britarch.ac.uk/shop)

**London Archaeologist** is published quarterly by the London Archaeologist Association  
44 Tantallon Road  
London  
SW12 8DG

**Registered charity number** 262851

**Printed by**  
Charlesworth Group  
Wakefield

**Website**  
[www.londonarchaeologist.org.uk](http://www.londonarchaeologist.org.uk)



## Commentary

114 Commentary  
*Gromaticus*

## Features

126 *Obituary*  
Jonathan Cotton and Alison Parnum appreciate the life of Gillian Clegg

132 *Access to archaeology*  
Highlights of July's 16-day Festival of British Archaeology in London

## Research

115 EARLY TOOTING BEC AND ITS REPUTED PRIORY  
What lies behind a popular local myth?  
*Graham Gower*

119 THE GUY'S HOSPITAL ROMAN BOAT FIFTY YEARS ON  
Fresh discoveries reveal more about this Roman boat and its construction  
*Bruce Watson, with contributions by Ian Blair and Nigel Jeffries*

127 LATE 13TH-CENTURY HOUSEHOLD 'CLEARANCE GROUPS' ON GRESHAM STREET AND THE LONDON JEWRY  
Detailed ceramic study throws new light on the end of London's medieval Jewry  
*Nigel Jeffries*

133 THE HIGHGATE POTTERY KILN EXPERIMENT 2010  
Nick Peacey returns to the site of an earlier experiment and solves a long-standing problem

## Letters

130 Chris Philpotts contributes to the debate on Saxon Southwark, and Graham Dawson updates the report on delftware pothouses

## Reviews

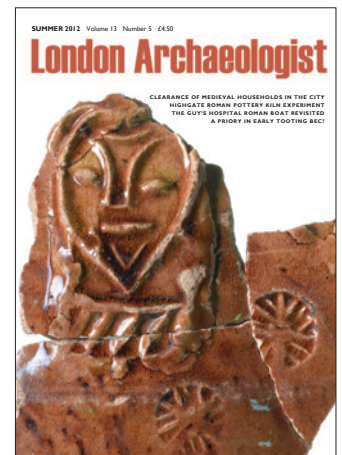
132 Books

## News

140 Mosaic

## Diary

Inside back cover      Diary



### Front cover

Fragment of a serving jug in Surrey-Hampshire border whiteware. The typical Tudor bearded figure with ruff is reminiscent of portraits of Shakespeare. Appropriately the piece was excavated from one of the earliest of London's playhouses – the Theatre in Shoreditch, built in 1576 – and may have been used to serve refreshments there. It is currently on display as part of Hackney Museum's *Mapping the change* exhibition until 22 September 2012 (see Mosaic, p 140).

Also marking The World Shakespeare Festival of 2012 is a new book on Shakespeare in London to be published by MOLA in July 2012. *Shakespeare's London theatreland: archaeology, history and drama*, is by Julian Bowsher, a winner, with Pat Miller, of the 2010 London Archaeological Prize for the study of the Rose and Globe theatres.

(© Andy Chopping /Museum of London Archaeology)