

Editor
Clive Orton

Features Editor
Becky Wallower

Secretary/Advertising
Becky Wallower

Marketing Manager
position vacant

Managing Editor
Peter Rowsome

ISSN number
0024-5984

SUBSCRIPTIONS
£16 post free UK or Europe, £25 rest of world, for four issues per year

Contact
Dr Jo Udall
Membership Secretary
63 Dinmont House
Pritchard's Road
London E2 9BW

Subscribe or renew your subscription online at the CBA Online Shop:
www.britarch.ac.uk/shop

London Archaeologist
is published quarterly by the
London Archaeologist Association
44 Tantallon Road
London
SW12 8DG

Registered charity number 262851

Printed by
Charlesworth Group
Wakefield

Website
www.londonarchaeologist.org.uk



Commentary

286 Commentary
Gromaticus

Feature

307 **Report preview:** Heads will roll...
A report due out early this year has the potential to change our interpretation of burial in Roman London. Chiz Harward, Natasha Powers and Sadie Watson preview key discoveries in a monograph covering 20 years of archaeological discoveries in the upper Walbrook valley.

Research

- 287 SOMERS TOWN GOODS YARD
Excavations at Brill Place, Camden NW1
Hana Lewis
- 294 HARMONDSWORTH FARM'S OTHER BUILDINGS
A study of the buildings around the Great Barn
Colin Bowl
- 299 THE RIVER AND THE FISH
A preliminary evaluation of the archaeology of early medieval fish traps in the Thames
Paul Clabburn
- 304 NEW LIGHT ON EARLY LEATHER-WORKING INDUSTRY IN MEDIEVAL WEST HAM
Excavations near Stratford Langthorne Abbey
Rosie Cummings
- 309 PHARMACEUTICAL GLASS IN POST-MEDIEVAL LONDON
A proposed typology
Karime Castillo Cardenas

Reviews

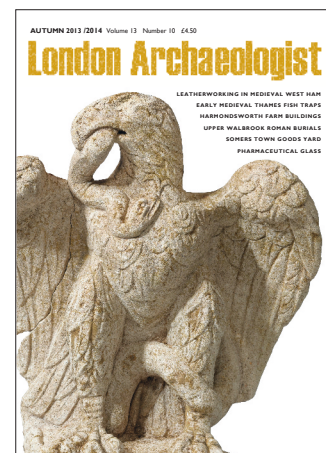
308 Book review

News

316 Mosaic

Diary

Inside back cover Diary



Front cover
Romano-British sculpture of an eagle and snake from an excavation by MOLA at Minories in the City of London. It is carved from limestone, stands 65cm tall and dates to the late 1st or early 2nd century AD. This statue probably adorned the mausoleum of a rich individual buried in the Eastern Cemetery of Roman London. It was eventually carefully buried near the mausoleum in the ditch beside the cemetery road, probably when the tomb was demolished.
See the news story on p 316 for further detail.
Photo ©Andy Chopping/MOLA