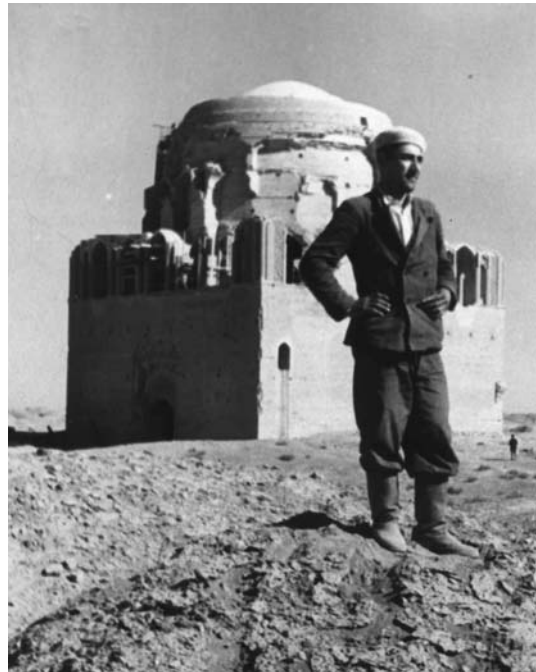
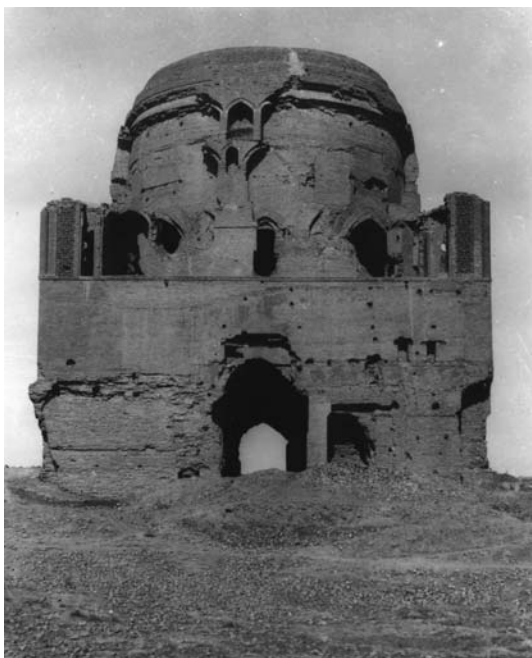




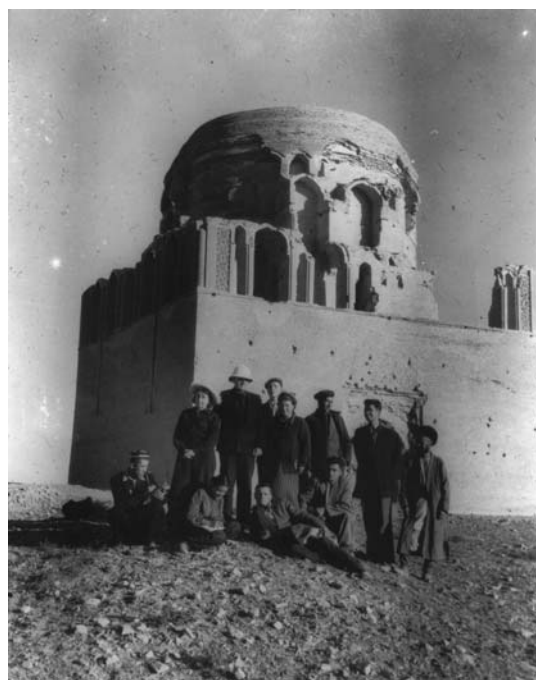
*The mausoleum of Sultan Sanjar in 1890.*



*The west and south sides of Sultan Sanjar in 1954.*



*The east side of Sultan Sanjar in 1924.*



*The west and north sides of Sultan Sanjar in 1954.*



*Shahryar Ark, Kepter Khana in 1890*



*The Great Kyz Kala in 1894.*



*The Mausoleum of Muhammad ibn Zayd in 1890.*



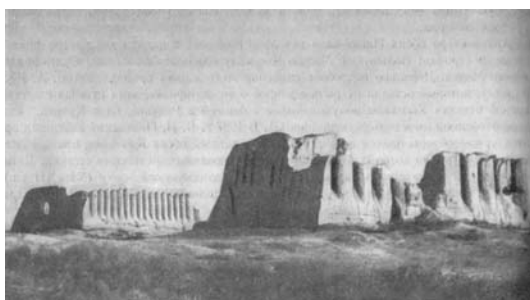
*The Timurid iwans in 1888.*



*The Mausoleum of Muhammad ibn Zayd in 1926.*



*The Timurid iwans in 1993.*



*The Great and Little Kyz Kalas in 1958.*



*The remains of a house at Shaim Kala in the 1950s.*



*Palace in Abdullah Khan Kala in 1890.*



*The west gate of Abdullah Khan Kala in 1890*



*Mosque on the east wall of Abdullah Khan Kala in 1890.*



*Abdullah Khan Kala in 1903.*



*The north wall and citadel area of Abdullah Khan Kala in 1890.*