

ROYAL COMMISSION ON THE ANCIENT AND HISTORICAL MONUMENTS OF SCOTLAND (INCLUDING THE NATIONAL MONUMENTS RECORD OF SCOTLAND)

Introduction

The format of this report continues that of previous years with summary accounts of the major archaeological field programmes of the Royal Commission followed by lists of accessions to the National Monuments Record of Scotland. Such lists are particularly important as they indicate the accession of short run reports of survey or assessment for which no other published account may be envisaged. The NMRS has attempted to be as up to date as feasible with the inclusion of such reports into the database. *Discovery and Excavation in Scotland* plays a vital part in the chain of the provision of information: the grid references are checked prior to publication within RCAHMS by Ian Fleming, a former member of Ordnance Survey and RCAHMS; following publication the extensive archive from which the DES entries are prepared is deposited in the NMRS. The NMRS is glad to house further information on sites, original documentation to be kept in perpetuity in NMRS collections, or abstracts of what may be held locally. Visitors are now able to consult the Oracle database using 'hands-on' access in NMRS. CANMORE, Computer Application for National Monuments Record Enquiries, provides user-friendly access to the database of NMRS. It contains details of archaeological sites, maritime sites, monuments and buildings in Scotland together with an index to the drawings, manuscripts and photographs in the Collections of the NMRS. Computerisation is ongoing and hundreds of buildings are currently being added to the database on a daily basis as part of data capture of the catalogues to the NMRS architecture collections. CANMORE-Web, an application that allows access to some of the information within the NMRS database, is also being developed and this is now available on the World Wide Web at www.rcahms.gov.uk/.

Reliance on formal publication of data is likely to decrease; thus interlinking of sources of information can only become more important. NMRS can only provide up to date information if its own database is constantly upgraded. Because the information is gathered from a variety of sources of varying reliability, the database must be used with due consideration. Thus if any user or browser finds something to update or correct, such information will be gratefully received. The creation of such databases is both interactive and cumulative. The Royal Commission is currently working with the Archaeological Data Service (ADS), a body funded by the Joint Higher Education Information Systems Committee through the Arts and Humanities Data Service (AHDS), to examine methods of transfer of data, which will help to link sites and monuments records into a wider framework. Similarly in the Scottish Cultural Resources Access Network (SCRAN), the Royal Commission, in partnership with the Royal Museums of Scotland and the Scottish Museums Council, is playing an important part in making archaeological and historical information available for educational purposes. The Geographical Information System (GIS) is at the heart of several projects including the First Edition Survey Project and the Historic Landuse Project, which are reported below. Historic Scotland has also continued to fund the cataloguing of archives resulting from excavations and surveys funded by HS, and this has ensured that this material is incorporated into the database.

Traditional forms of publication still have a vital role to play in bringing archaeological information into the public domain. The appearance of *Eastern Dumfriesshire: an Archaeological Landscape* brings to fruition several years of field endeavour. The volume provides a synthesis of the landscape of an area that has not previously been examined in detail. The use of two-colour rather than monochrome printing enhances distribution maps and certain plans. The third in the broadsheet series illustrates the archaeology of the crofting landscape of Achiltibuie, Wester Ross. The *Catalogue of Aerial Photographs 1993* lists the photographs and includes a wide range of illustrations of both archaeological and architectural subjects.

The draft gazetteer for *Early Medieval Sculpture in the West Highlands* was completed. It describes 155 carvings at 54 sites in an area extending from the Clyde islands, where Cumbrae and Bute have important collections, to west Sutherland and the Outer Hebrides. A summary handlist of the comparable carved stones recorded in the *Inventory of Argyll* has also been prepared, and the drawings for both areas have been arranged typologically at uniform scale to form a complete pictorial corpus for western Scotland. This material will be discussed in the introduction to the volume, which is to be published in 1998. Further recording has also been carried out on carvings in north-east Scotland, particularly those which have stylistic connections with the West Highlands.

RCAHMS assisted Historic Scotland with the detailed recording through drawing and photography of the St Andrews Sarcophagus prior to and during its conservation before exhibition in London.

Reports on Buildings and Industrial Survey programmes are given in *Monuments on Record: Annual Review 1996-7*, which also includes articles on CANMORE, the Air Photographs Collection, and GIS and the Historic Landuse Assessment Pilot Project. Survey of the 20th-century defences of Scapa Flow, Orkney, continued, including detailed aerial photography.

NATIONAL ARCHAEOLOGICAL SURVEY

Eastern Dumfriesshire

The volume for *Eastern Dumfriesshire* has now been published by The Stationery Office. Including the Gazetteer it extends to 382 pages, with 283 pages of text supported by a wide range of photographs, plans and maps. A particularly striking component of the volume are the photographs from the collection housed in RCAHMS, revealing the spectacular quality of some of the landscape images that can be found in this source of information.

Aberdeenshire

1997 has seen the second full year of fieldwork in central Aberdeenshire, with the winter months spent in the lower-lying ground to the east of Inverurie and Peterculter, and the remainder of the year up to the end of October spent largely on the highland estates to the west of Kildrummy. Within the former area, where the landscape has been heavily cultivated and surviving archaeological remains tend to be found in small areas of woodland and rough ground, new discoveries have mainly

RCAHMS

been of an agricultural or industrial nature with rig and furrow and quarries representing over 90% of the recorded sites. In the highlands, however, the pattern of survival is very different. Among the large number of new sites that have been recorded there, prehistoric remains include large burial cairns, unenclosed settlements and field-systems, while those of the medieval and later periods range from farmsteads and field-systems to groups of shieling-huts.

With the emphasis this year having been placed on carrying out prospective walking and noting, little detailed survey of individual sites has been undertaken. Those that have been surveyed in detail include two well-preserved souterrains at Kildrummy and a third at Glenkindie House, a henge at Wormy Hillock, Rhynie, an air-raid shelter near New Machar, and a burial cairn at Migvie.

Angus

A detailed survey of Strone Hill, near Lintrathen in Angus, was undertaken at a scale of 1:1000 on behalf of Historic Scotland. The west end of Strone Hill covers an area of about 16.4ha (40.5 acres) and contains elements of a well-preserved prehistoric landscape, including up to three ring-cairns, a burial cairn, a possible four-poster, about 22 hut-circles (including some with double walls of Dalrulzion-type), a large number of small cairns, and linear fields defined by stony banks. Later remains include a farmstead with a kiln-barn, a number of other sub-rectangular buildings, huts, enclosures and rig. Two enigmatic stone-built features were surveyed at 1:100. One, known as 'The Abbot's Cross', is a cross of fairly regular plan measuring about 10m overall, whilst the other has five arms and measures up to 18m across. Both may relate to the boundaries of the lands held by Arbroath Abbey in the Middle Ages.

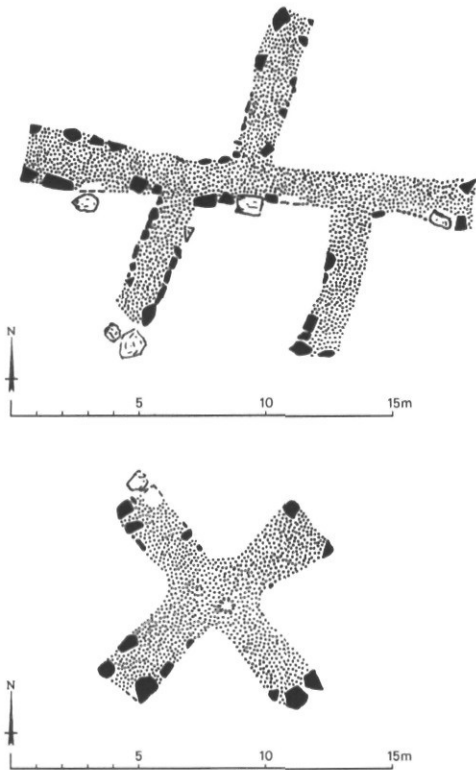


Fig 19 National Archaeological Survey. Strone Hill, Lintrathen, Angus, 'Stone Cross' and 'The Abbot's Cross'. (RCAHMS)

The opportunity was also taken to record three recently discovered cup-and-ring marked boulders at Easter Denoon,

Guthrie Hill and Old Downie, a cup-marked boulder on Turin Hill, and the fragments of a cup-and-ring marked boulder from Woodhill, near Monifieth, which were first mentioned in 1879, but the description and location were never accurately recorded.



Fig 20 National Archaeological Survey. Easter Denoon, Angus, cup-and-ring marked boulder. (RCAHMS)

Caithness, Highland

Under the aegis of the Ordnance Survey Map Revision Programme, an area of 5km² near Dunbeath was surveyed in which several new hut-circles and burnt mounds were recorded.

Perth and Kinross

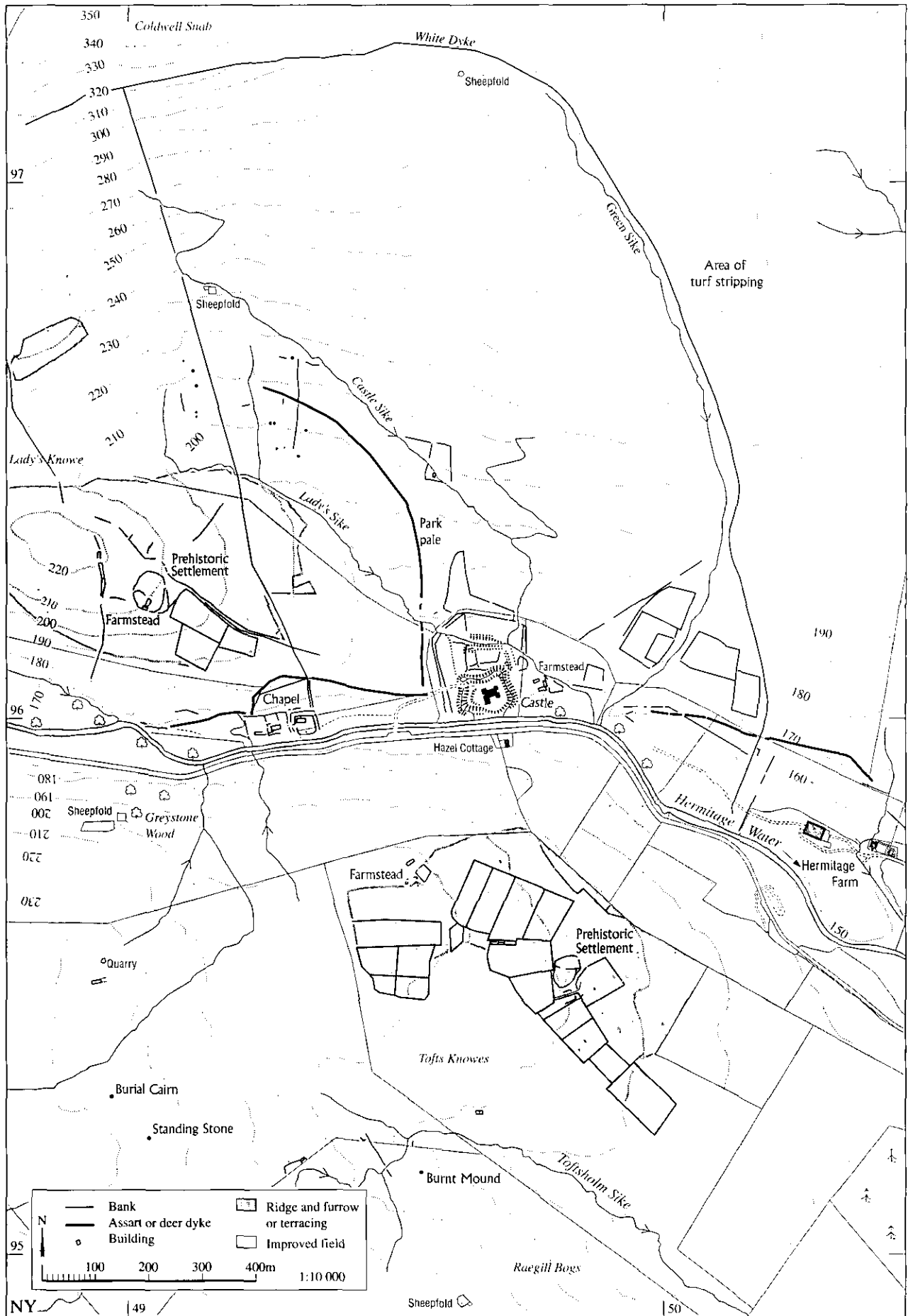
Following a request from Historic Scotland, a contour survey was carried out on the possible Neolithic long mound at Herald Hill, near Meikleour in south-east Perth.

AFFORESTABLE LAND SURVEY

This summary report gives a brief outline, Council by Council, of RCAHMS work relating to the strategic survey of selected areas of Scotland likely to be at risk from afforestation. This is followed by a list of future areas of work and reports on the progress of the First Edition Survey Project and the Historic Landuse Assessment Project.

(see opposite)

Fig 21 Afforestation Land Survey. Hermitage Castle, Liddesdale, Scottish Borders: this map of the prehistoric to post-medieval archaeology in the lower part of the Hermitage Water is centred on the late medieval castle which lay within the medieval Forest of Liddesdale. The stone-built castle sits within what may be earlier earthworks and is associated with a chapel; an earthwork to the west is either the pale of a hunting park or an assart bank. The demise of the forest is marked by the appearance of a series of post-medieval farmsteads and their accompanying field-systems, reoccupying ground surrounding Iron Age enclosed settlements. (The map is an abstract from the forthcoming ALS Report on the Liddesdale Survey.) (RCAHMS: based on the Ordnance Survey mapping with the permission of the Controller of Her Majesty's Stationery Office © Crown copyright. Unauthorised reproduction infringes Crown copyright and may lead to prosecution or civil proceedings. Licence number GD03127G/003/97.)



RCAHMS

Aberdeenshire

Mar Lodge Estate: a condition survey of the monuments on the Mar Lodge Estate was undertaken and a report was submitted to the National Trust for Scotland in December 1996.

Highland

Achiltibuie: the results of the survey have been passed to the NMRS. A broadsheet, *Achiltibuie: the archaeology of a crofting landscape*, summarising the findings of the survey was published in August 1997; copies are available from the Royal Commission (£1.50 including p&p).

Rogart: the results of the survey of the core of the parish of Rogart have been passed to the NMRS.

Glenurquhart: field survey of the north side of Glenurquhart, from Loch Ness to the watershed with Strathglass, was begun in August and is due for completion in October 1997. The initial fieldwork has revealed a complex pattern of post-medieval settlement in a glen unaffected by 18th and 19th-century clearance, and has identified what is probably at least one new Pictish barrow cemetery, and several additional barrows at the Garbeg Pictish cemetery, as well as two unusual building types

that may be relatively late in the sequence of prehistoric settlement.

Perth and Kinross

Strathearn: the field survey of a 5km wide strip of Strathearn, stretching from Crieff to Braco, has been completed. The interpretation of the dense pattern of cropmarks was a special feature of this survey, necessitating the creation of an enhanced recording database for AP sites, which has set a new standard for the description of cropmarks in the NMRS.

Ochils: a desk-based assessment of the archaeology of the Ochils to the east of Glen Eagles/Glen Devon has been initiated, and the site data is being added to the NMRS.

Stirling/Clackmannanshire

Menstrie Glen: the field survey of the Menstrie Glen and its environs has been completed. The glen contains a remarkable suite of medieval and later agricultural remains, which are accompanied by the ruins of many of the contemporary farm steadings. Although the medieval and later farms have swept away most traces of earlier occupation, a hitherto unrecognised dun and its outwork was identified on the east side of the valley.

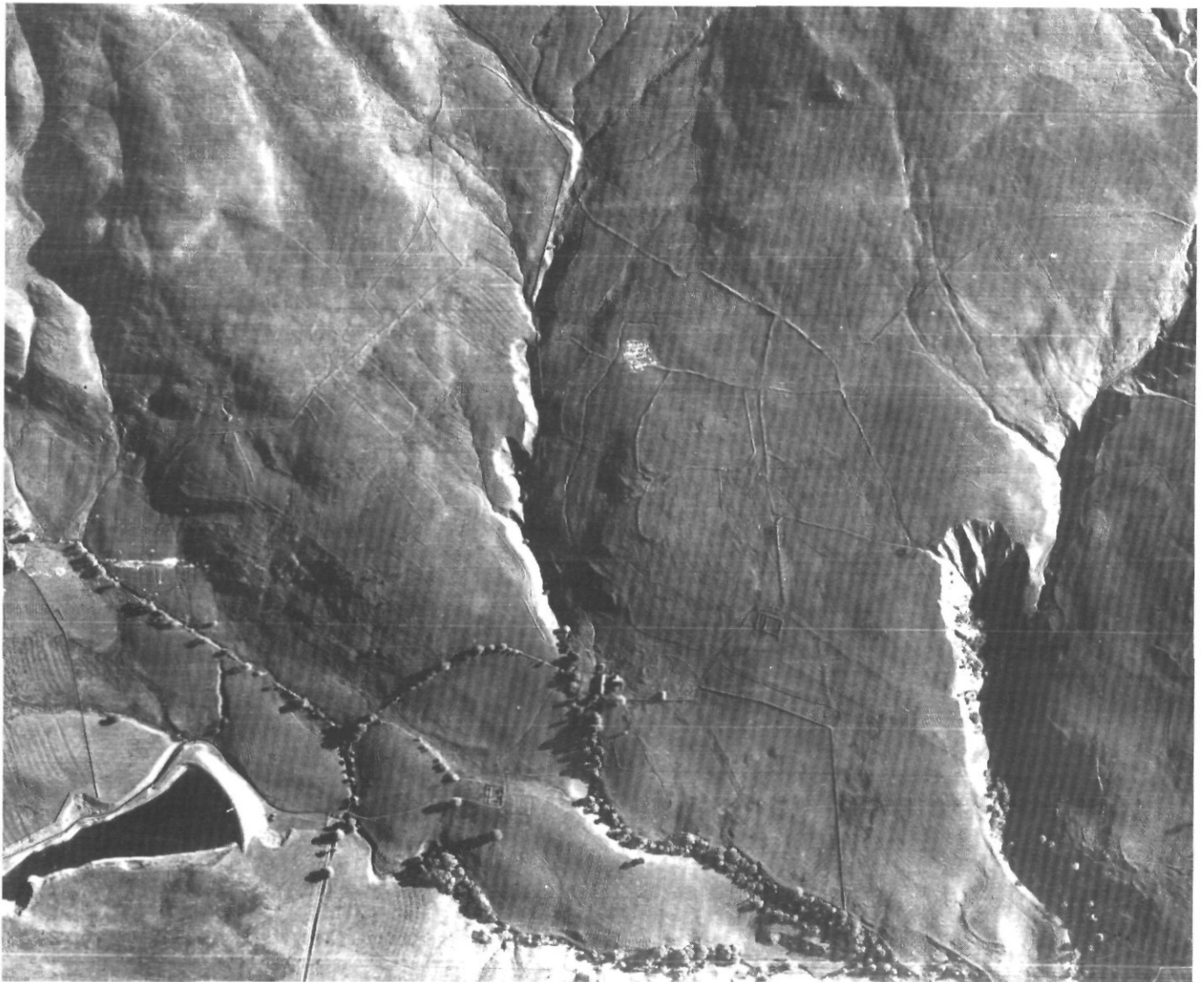


Fig 22 Afforestation Land Survey. Menstrie Glen, Stirling: a vertical aerial photograph from the NMRS collection, taken in June 1946, showing a complex sequence of medieval and later settlement and cultivation remains preserved in this valley at the western end of the Ochil Hills. Recent land improvement has swept away parts of the field-systems, but ground survey in conjunction with air plotting has enabled the ALS team to reconstruct a map of these important remains. (RAF 106G/Scot/UK120/4047)

Future Surveys

The ALS programme for 1998-9 includes further work on the western Ochils and a survey of part of the Angus glens.

Special survey: Fife

Cults Hill Limeworks (NO 351 088) was surveyed at the request of Fife Regional Council and Historic Scotland. The survey was designed to map the industrial remains, which are unusually well preserved, at this historically important lime quarry and its associated processing works. The lime quarries and kilns had been in operation at least since the end of the 18th century and the tramway system that linked the mines to the kilns can still be traced.

FIRST EDITION SURVEY PROJECT

This project, which is run in partnership with Historic Scotland, is continuing to record details of post-medieval settlements shown abandoned on the first edition of the OS 6-inch maps of Scotland.

Highland and the Western Isles have been completed, adding records on some 7000 sites, the majority of which were hitherto unrecorded, to the NMRS Oracle database. The island of Lewis has proved particularly interesting as the OS survey was undertaken in the 1850s, at the time of a major transformation of the townships, and thus few of the settlement features shown on the first edition of the 6-inch map appear on the modern digital 1:10,000 map.

Work is now in progress on Perthshire and the team will move on to Argyllshire in 1998.

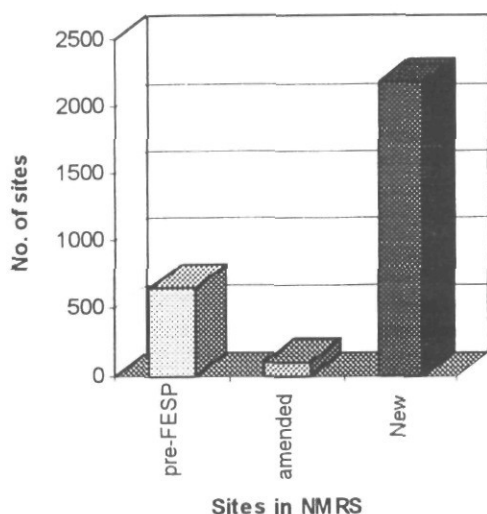


Fig 23 First Edition Survey Project: diagram showing the impact of the survey on the number of sites on Lewis recorded in the NMRS Oracle database. (RCAHMS)

HISTORIC LANDUSE ASSESSMENT PROJECT

In the autumn of 1996, Historic Scotland and the Royal Commission established a partnership project to examine the methodology of mapping historic landuse patterns in Scotland using the RCAHMS GIS system. This approach to identifying areas of relict historic components in the landscape was originally developed as a manual system in Cornwall, and it is hoped that the use of a GIS base will allow the creation of a more flexible system. The results of the pilot project were so promising that further work on Liddesdale, Orkney, the Cairngorms and the Antonine Wall is being undertaken in 1997-8.

AERIAL PHOTOGRAPHIC SURVEY

Reconnaissance

The period from November 1996 to October 1997 has seen wide-ranging aerial reconnaissance by the RCAHMS. During 106 hours in the air a total of 674 sites were recorded, a considerable reduction on the previous year's total of 1159. The weather of 1996-7 was very mixed, and the warm and dry conditions of July to September were not timed to benefit the formation of cropmarks.

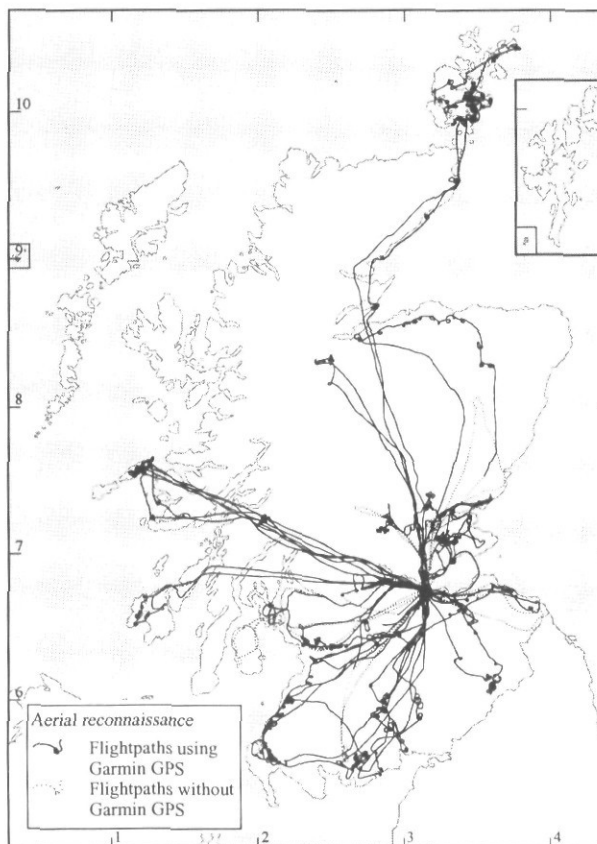


Fig 24 Aerial Photographic Survey. Plot of flight traces for 1997 produced from Global Positioning System survey data. (RCAHMS)

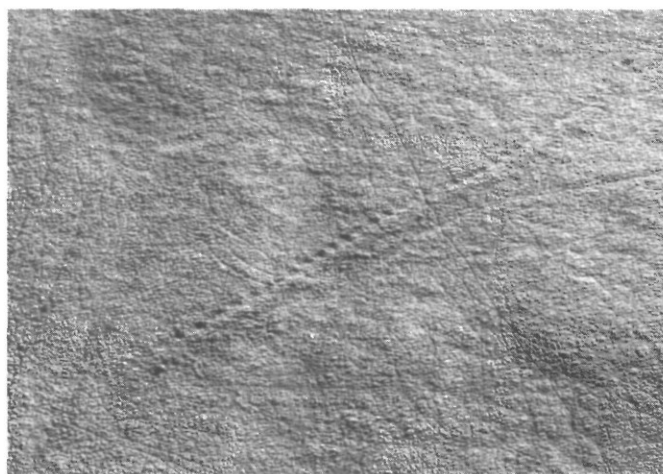


Fig 25 Aerial Photographic Survey. Brown Rig, Berwickshire, Scottish Borders, pit-alignment. (RCAHMS C76734)



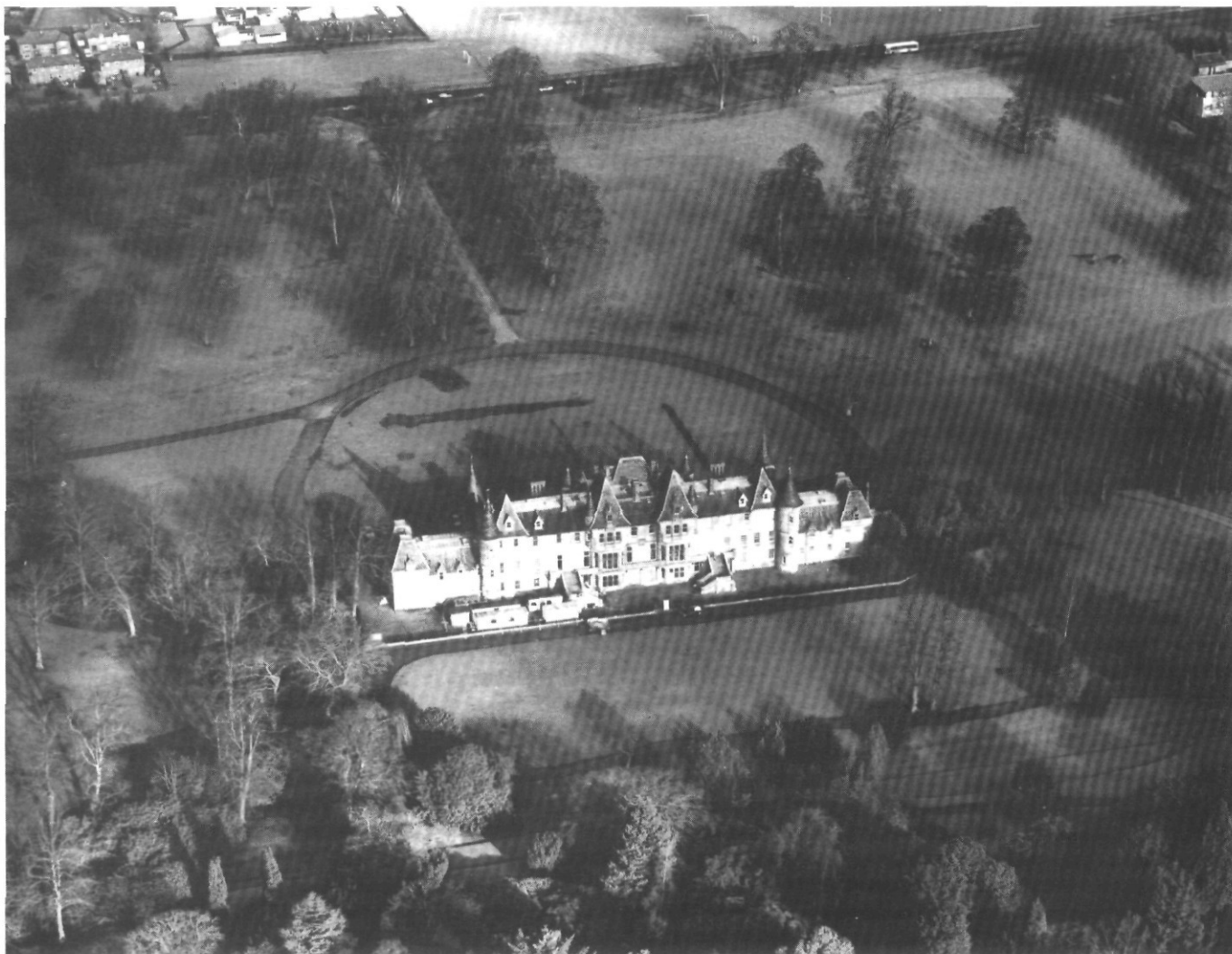


Fig 27 Aerial Photographic Survey. Callendar Park and the Antonine Wall, Falkirk. (RCAHMS D05741)

The late autumn and early winter of 1996 saw some reasonable periods of high pressure, which were, however, only too frequently accompanied by mist. In the early part of 1997 persistent strong winds teamed with overcast conditions severely restricted reconnaissance. Sorties designed to exploit the qualities of raking winter light or snow were directed to Strathearn, Galloway, the Lammermuirs, along the Antonine Wall and to the Isle of Arran. Among the sites recorded was a rare example of pit-alignment, one of the very few visible in other than cropmark form. Reconnaissance covered areas of particular interest to the projects undertaken by other teams in RCAHMS. Subjects covered included designed landscapes and the major Second World War installations around Loch Ryan.

It seems perverse that one of the best three-month periods of suitable weather for flying in light aircraft should follow three rainy months, unsuitable for the creation of stress in cereal crops. Edinburgh had three times its average rainfall in June, while Mull, Islay and Tiree had half their average. With conditions like

(see opposite)

Fig 26 Aerial Photographic Survey. Transcription of Roman temporary camps, Lochlands, Falkirk, taken from the *Catalogue of Aerial Photographs 1993*. (RCAHMS; based on the Ordnance Survey mapping with the permission of the Controller of Her Majesty's Stationery Office © Crown copyright. Unauthorised reproduction infringes Crown copyright and may lead to prosecution or civil proceedings. Licence number GD03127G/003/97.)

these in the approach to the main summer's reconnaissance, it is not surprising that the results in this year should differ in type and quantity from the other years. Despite the lower rainfall in the west of Scotland, repeated reconnaissance did not yield the hoped-for results. However, conditions did vary even over small areas; a previously unknown designed landscape was discovered near Stranraer, possibly relating to the time of the removal of the Stair family to the barracks at Culhorn, following the fire at Castle Kennedy in 1716, and a new palisaded enclosure belonging to the group first identified after the summer of 1992 was recorded when all the other examples remained invisible. Examination of the Nith Valley revealed a new Roman temporary camp on the opposite side of the river from the Roman fort and temporary camp discovered near Drumlanrig in 1984.

The lack of cropmarking and the calm, relatively clear weather allowed sorties to areas in the Hebrides and Orkney. In Orkney the recording of the 20th-century defences of the islands, begun in 1995, was completed, but little time was left for more conventional archaeological sites. Three sorties to Coll concentrated on the well-preserved pre-Improvement settlement and cultivation remains and on the effects of erosion; traces of earlier settlement patterns also emerged. A similar survey was carried out over Islay.

Sponsored Fliers

Twelve flights totalling 26 hours in the air were undertaken in Moray, Aberdeenshire and Angus. The wet weather of the spring,



Fig 28 Aerial Photographic Survey. Cults Hill, Fife. (RCAHMS D09014)



Fig 29 Aerial Photographic Survey Gun batteries, North Sutor, Ross and Cromarty, Highland. (RCAHMS D09702)

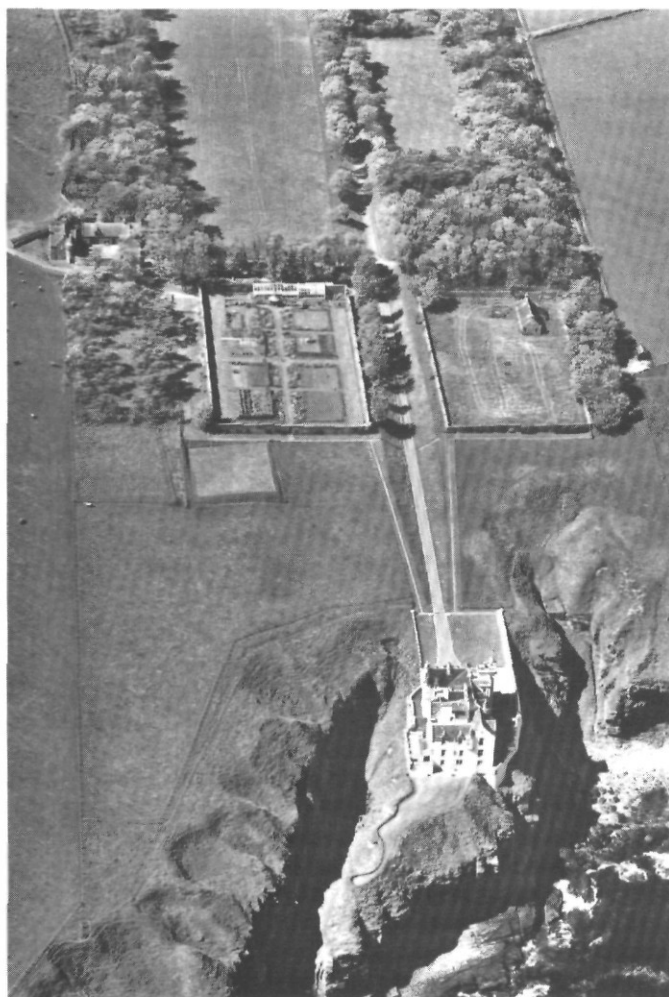


Fig 30 Aerial Photographic Survey. Dunbeath Castle, Caithness, Highland. (RCAHMS D09717)

as in the rest of Scotland, led to little in the way of cropmark formation, and the opportunity was taken to photograph upstanding sites and excavations. Details of the results are contained in the main contributions in this volume.

NATIONAL MONUMENTS RECORD OF SCOTLAND

There was a considerable increase in the number of users of the NMRS, with the total number of consultations passing the 12,000 mark in March. This figure includes all the visitors to John Sinclair House, as well as a large number of telephone, fax and e-mail enquiries. The range of enquiries continues to be very broad. In order to provide a more welcoming and attractive layout for all visitors the reception area in John Sinclair House was redesigned, and the accommodation requirements for visitors within the public area are being reviewed. A complete review of public services has taken place with the revision of the Citizens Charter and the articulation of a Public Services Policy.

CANMORE (Computer Application for National MONuments Record Enquiries) was launched in the public area of the NMRS in April, providing easy access to information on Scotland's archaeological sites, monuments, many buildings and maritime sites. Visitors have already benefited from using CANMORE and the response from those consulting the database has been very positive. Improvements have been made, following constructive comments, and a joint project with ADS and SCRAN that will

enable CANMORE to be consulted on the World Wide Web is underway. To keep abreast of the demand to use CANMORE, further terminals are being made available to researchers in the NMRS.

Although CANMORE contains information about all recorded archaeological sites, the computerisation of the architecture catalogue is ongoing. Information for the former regions of Highland and Fife is now available through CANMORE and the name and location of buildings within Scottish Borders is also available, although details of the NMRS collections are still to be added. Work is currently concentrating on Edinburgh. Enhancement of the maritime information has also continued throughout the year.

Cataloguing of archaeological material has continued to be concentrated upon archives from excavations funded by Historic Scotland and its predecessors, following its initiative to reduce the backlog of unpublished projects. In the past year material has continued to flow into the Record, including archives from many excavations including: Edinburgh Castle, City of Edinburgh; St Nicholas Farm, Fife; Sueno's Stone, Moray; and Cnip, Western Isles. Reports on excavations and surveys have been received from numerous units and individuals, together with a diversity of other material, in particular, R W B Morris's archive on prehistoric sculpture, and additional notes and surveys by Professor Alexander and Dr Archibald Thom on megalithic monuments. Highlights among the historical material acquired this year include a 19th-century illustrated record of Thomas Davidson of Muirhouse's family history and a 1923 album of caricatures of Office of Works staff. Several industrial collections have been received, principally Dr Edward Patterson's papers which are largely concerned with his interest in blackpowder production.

PRINCIPAL ARCHAEOLOGY ACCESSIONS October 1996 to September 1997

Scotland in General

Collection of photographs, including Easter Kinnear, Fife; Soutra Aisle, Midlothian; the Bullough Mausoleum, Rum, Highland; Cairnpapple, West Lothian; and Housesteads, Northumberland, by the late J Winram. (Mrs V Dean, Edinburgh Archaeological Field Society)

Photographs and research notes on souterrains at Clova, Culsh, Glenkindie, Migvie, Milton of Tullich, Muir of Kildrummy, Aberdeenshire; Barns of Airlie, Carlungie, Pitcur, Angus; Ardross, Fife; Achinnearin, Ham, Kilphedir, Kirkton, Laid, Lynchat, Highland; Castlelaw and Crichton, Midlothian, by A Grandjean and other members of Subterranea Britannica. (Mr A Grandjean)

Site sketches, location maps and copy of *Discovery and Excavation in Scotland* entries for sculptured stones in Argyll and Bute, Dumfries and Galloway, and Tayside, recorded by K Naddair, 1996. (Mr K Naddair)

Reminiscences of Major-General James Scott Elliot's military career and interest in dowsing, by K A Steer, 1996. (Dr K A Steer)

A collection of material including filing cabinets of site records and photographs, notes, drawings, photographs, maps and books compiled by R W B Morris in his research into prehistoric rock sculpture. (Mr S Beckensall)

Report (no 298) on the archaeological database for the Scottish Wetlands, by C Clarke, Centre for Field Archaeology, 1996. (Dr C Clarke, CFA)

RCAHMS

Black and white photographs of sculptured stones throughout Scotland, by T E Gray, 1997, including hog-backs at Ancrum, Lemptilaw and Nisbet, Scottish Borders; and cross-slabs at Kirriemuir, Angus, and Fearnan, Perth and Kinross. (Mr T E Gray)

Notes, drawings, correspondence, journals and other papers relating to research into archaeoastronomy and surveys of megalithic sites by Professor A and Dr A Thom. (Mrs S McColl)

Drawings of querns, the Girvan urn, drawings and charts relating to animal bones from Dun Mor Vaul, Tiree; plan of Dun an Ruigh Ruadh, Highland; and comparative details of brochs or duns, by Dr E W MacKie. (Dr E W MacKie)

A collection of material relating to the researches of P H R Mackay, including photographs of Professor Piggott's excavations at Cairnpapple; correspondence on medieval religious houses; and notes, sketches, slides and photographs on Pictish symbol stones by E A Urquhart, donated to the SRO by Mrs J S Mackay. (per Mr P Cadell, Scottish Record Office)



Fig 31 National Monuments Record of Scotland. A ladder and sheer-legs filled the role of the photographic tower during Professor Stuart Piggott's 1948 excavations at Cairnpapple, West Lothian. Piggott is the photographer. (Mrs J Mackay)

Correspondence, notes and reports on bones from Keiss, Caithness, and Brough Road, Birsay, Orkney, by Professor A M Young, 1980–82. (Dr C E Batey)

Photographs of miscellaneous archaeological sites, including Murthly stone circle, Pitnacree standing stones, a cist at Alnwick, an urn and a jet necklace from Balcalk, an urn and human remains photographed by A Macdonald, Brodick, other unidentified sites including medieval stone fragments and a cremation urn, probably from Aberdeenshire. (Dr J N G Ritchie)

Negatives and prints, principally of Early Christian and medieval sculpture, many from the work of J B Mackenzie, minister of Colonsay, and later of Kenmore. Others were a result of the survey work which resulted in R Allen and J Anderson's 1903 *Early Christian Monuments of Scotland*. (Dr A Sheridan, National Museums of Scotland)

Report (no 346) of a coastal assessment survey of the Firth of Forth from Dunbar to the Border of Fife, by H F James, 1996–7. (Ms H James, GUARD)

Archive material from the survey of linear earthworks, by John Barber, 1982. (Mr A Duffy, AOC (Scotland) Ltd)

Colour photographs, mostly aerial stereo pairs, of industrial remains in the Wanlockhead-Leadhills area of South Lanarkshire and Dumfries and Galloway, by A Crawshaw, 1996. (A Crawshaw)

Correspondence and notes by D E Andrews on research into the mathematical analysis of prehistoric monuments. (Mr D E Andrews)

Notes for supervisors of excavations organised by the Inspectorate of Ancient Monuments, Ministry of Works, 1955. (Historic Scotland)

Miscellaneous research notes and slides by A Henshall and J N G Ritchie relating to a number of sites, including Glenvoidean, Argyll and Bute, and Achandunie, Rosskeen, Highland, 1996. (Dr J N G Ritchie)

ABERDEEN CITY

Report on repair works on the A90T Bridge of Dee, City of Aberdeen, by G Fisher, Aberdeenshire Council, 1997. (Mr D Macpherson, Aberdeenshire Council)

Colour slides, loaned for copying, of sites within the City of Aberdeen excavated by the Aberdeen Archaeological Unit. (Ms A Cameron, Aberdeen Archaeological Unit)

ABERDEENSHIRE

Report of watching brief at Mains of Auchinbadie, Banff, by J Wordsworth, Wordsworth Archaeological Services, 1996. (Mr J Wordsworth, Wordsworth Archaeological Services)

Copies of record sheets for additions to Aberdeenshire Sites and Monuments Record, 1996–7, catalogue of archaeological aerial photographs; summary report, with contact prints, of 1996 and 1997 flying programme of Aberdeen Archaeological Surveys. (Mrs M Greig, Aberdeenshire Council)

Photographs, negatives and photographic list of excavation at Balvenie Castle, Aberdeenshire, by J Lewis, Scotia Archaeology Ltd, 1993. (Mr J Lewis, Scotia Archaeology Ltd)

Report of a pre-forestation survey of Beldorney Estate, Glass, near Huntly, Aberdeenshire, by C Lowe and J Rideout, Headland Archaeology Ltd, 1997. (Dr S Carter, Headland Archaeology Ltd)

Publication drawings from report of forestry survey at Burn o'Vat, Aberdeenshire, by Headland Archaeology Ltd. (Dr S Carter, Headland Archaeology Ltd)

Archive from excavations at Castle of Wardhouse, Inch, Aberdeenshire, by P Yeoman, 1988. (Mr P Yeoman, Fife Council)

Colour photographs, with accompanying locational map, of military roads and bridges around Corgarff, Aberdeenshire, by R Kent, 1992. (Dr D Pringle, Historic Scotland)

Reports of a detailed analysis of samples from a turf gable at Corse Croft, Huntly, Aberdeenshire, by S Carter, T Holden and A McMullen, and of the cereal, clay and broom thatch, by T Holden and S Carter, Headland Archaeology Ltd, 1997. (Dr S Carter, Headland Archaeology Ltd)

Publication drawings from the articles 'The defences of Dundarg Castle', by N Fojut and P Love, and 'A wooden ard-share from Dundarg, Aberdeenshire, with a note on other wooden plough pieces', in *PSAS* 113 (1983), by S Rees. (Mr N Fojut, Historic Scotland)

Report and publication drawings of a forestry survey in Glen Gelder, Balmoral, Aberdeenshire, by S Carter and M Dalland, Headland Archaeology Ltd, 1996. (Dr C Lowe and Dr S Carter, Headland Archaeology Ltd)

Report and publication drawings of a forestry survey of Gowanfold, Inverallochy, Aberdeenshire, by S Carter and C Russell-White, Headland Archaeology Ltd, 1996. (Headland Archaeology Ltd)

Report and publication drawings of a forestry survey of Lamahip Pinewood, Glen Cat, Aberdeenshire, by S Carter and C Russell-White, Headland Archaeology Ltd, 1996. (Headland Archaeology Ltd)

Photographs and pencil plan of Longmanhill Cairn, Gamrie, Aberdeenshire, by J S Richardson, 1924, with photographs and photocopied notes on the same by R Feachem, 1956. (Mr G J Barclay, Historic Scotland)

Report and publication drawings of a forestry survey of North Hill and Finlets Pinewood, Forest of Birse, Aberdeenshire, by S Carter and C Russell-White, Headland Archaeology Ltd, 1996. (Headland Archaeology Ltd)

Report of the discovery of a well at the Pitmedden Gardens farming museum, Udny, Aberdeenshire, by R Turner, 1996. (Mr R Turner, National Trust for Scotland)

A copy of 'Some Antiquities of Aberdeenshire', a collection of James Ritchie's published archaeological and antiquarian papers, with a letter by his grandson on his photography. (Dr A E Ritchie)

Publication drawings from report on Stoneyhill, Aberdeenshire, Headland Archaeology Ltd. (Dr S Carter, Headland Archaeology Ltd)

A copy of an unpublished article, illustrated with photographs, on the Two Houses of Tonley, Aberdeenshire, by I B D Bryce. (Mr I B D Bryce)

Drawings from excavations at Wardend of Durris, Aberdeenshire, by C Russell-White, AOC (Scotland) Ltd, 1988-90. (Mr A Duffy, AOC (Scotland) Ltd)

ANGUS

Copies of plans illustrating the bounds of Guardianship land at the Aberlemno stones, Angus, 1913 and 1956-7. (Mrs L Linge, Historic Scotland)

Copies of record sheets and contact prints of aerial photographs of sites recorded in Angus by Aberdeen Archaeological Surveys, 1996-7. (Mrs M Greig, Aberdeenshire Council)

Photographic record, colour slides and third interim report (1995) of excavations at Auchlishie, near Kirriemuir, Angus, by A J Dick, 1994-6. (Mr A Dick)

Drawings, site notes, photographs, negatives and colour slides from excavations and a watching brief at Bishop's Close, Brechin, Angus, by Scotia Archaeology Ltd, 1995. (Mr J Lewis, Scotia Archaeology Ltd)

Report (no 300) of excavations at the Brown Caterthun, Angus, by A Dunwell and R J Strachan, Centre for Field Archaeology, 1996. (Mr A Dunwell, CFA)

Reports and excavation archive of excavations at Carnoustie, Angus, by A N Smith, AOC (Scotland) Ltd, 1994. (Mr A Duffy, AOC (Scotland) Ltd)

Publication drawings from report of forestry survey at Craigmeg, Angus, by Headland Archaeology Ltd. (Dr S Carter, Headland Archaeology Ltd)

Archive from excavations at Edzell Churchyard extension, Angus, by J O'Sullivan, AOC (Scotland) Ltd, 1994. (Mr A Duffy, AOC (Scotland) Ltd)

Third interim report of the Fordhouse Barrow excavations (NTS no 7), Angus, by R Peterson, G Brown, M Leivers and E Proudfoot, 1996. (National Trust for Scotland)

Report of excavation and survey at Maryton Law, Angus, by M Dalland, Headland Archaeology Ltd, 1996. (Dr C Lowe, Headland Archaeology Ltd)

Publication drawings from *PSAS* 113 (1983) of Bronze Age burials at Melgund, Baldardo, and Easter Marcus, Angus, by J R Sheriff. (Mr N Fojut, Historic Scotland)

Report and publication drawings of pre-afforestation survey of Millden Estate, Glen Esk, Angus, by C Lowe and J Rideout, Headland Archaeology Ltd, 1996. (Headland Archaeology Ltd)

Archive from an excavation at the Star Garage, Montrose, Angus, by R Cachart, SUAT, 1992. (SUAT)

Archive from excavations at Nether Kelly, Arbroath, Angus, by S Carter, AOC (Scotland) Ltd, 1992. (Mr A Duffy, AOC (Scotland) Ltd)

Report (no 302) of a survey of rabbit erosion of the earthworks of the White Caterthun, Angus, by A Dunwell, Centre for Field Archaeology, 1996. (Mr A Dunwell, CFA)

ARGYLL AND BUTE

Notebook, drawings, photographs and slides of an excavation at An Torr, Glencoe, Argyll and Bute, by J Lewis, Scotia Archaeology Ltd, 1994. (Mr J Lewis, Scotia Archaeology Ltd)

Notebook, project outline and drawings of excavation at Ardchattan Priory, Argyll and Bute, by R Murdoch, Scotia Archaeology Ltd, 1995. (Mr J Lewis, Scotia Archaeology Ltd)

Publication drawings from report on Ballymeanoch, Argyll and Bute, by Headland Archaeology Ltd. (Dr S Carter, Headland Archaeology Ltd)

Report (no 412) of excavation at Benderloch, Argyll and Bute, by G MacGregor, GUARD, 1996. (GUARD)

Correspondence and slides relating to excavation at Cnoc Eibriginn, Colonsay, Argyll and Bute, by Dr J Ruffell, 1971. (Mr A Saville, National Museums of Scotland)

Excavation archive from Dunstaffnage Castle, Argyll and Bute, by Scotia Archaeology Ltd, 1987-95. (Mr J Lewis, Scotia Archaeology Ltd)

Definitive summary of the records of the Finlaggan excavations, Argyll and Bute, by the National Museums of Scotland, by D H Caldwell. (Dr D Caldwell, National Museums of Scotland)

Report of survey of lands to the west of Goat Fell, Arran, Argyll and Bute, in advance of Millennium Forest work, by J Harden,

RCAHMS

Archaeological Services, 1996. (Ms J Harden, Archaeological Services)

Archive from Iona Small Works excavations, Argyll and Bute, by F McCormick, AOC (Scotland) Ltd, 1988. (Mr A Duffy, AOC (Scotland) Ltd)

Archive from Iona Riverbank excavations, Argyll and Bute, by J O'Sullivan, AOC (Scotland) Ltd, 1994. (Mr A Duffy, AOC (Scotland) Ltd)

Negatives of 18th-century towers, a fort and cannon at Islay House, Argyll and Bute, by I MacIvor, 1971. (Dr D Pringle, Historic Scotland)

Report (no 442) of assessment of Kilkerran to Macringan's Point, Campbeltown, Argyll and Bute, by O Lelong, 1997. (GUARD)

Reports, excavation records, drawings, slides, photographs and negatives from excavation at Lismore churchyard, Argyll and Bute, by J O'Sullivan, AOC (Scotland) Ltd, 1994. (Mr A Duffy, AOC (Scotland) Ltd)

Report (no 411) of watching brief at Mulreesh lead mines, Islay, Argyll and Bute, by K Speller, GUARD, 1996. (GUARD)

Publication drawings from report of forestry survey at Rockside, Argyll and Bute, by Headland Archaeology Ltd. (Dr S Carter, Headland Archaeology Ltd)

Archive from excavation at Rossdhu Castle, Loch Lomond, Argyll and Bute, by J Lewis and R Murdoch, Scotia Archaeology Ltd, 1996. (Mr J Lewis, Scotia Archaeology Ltd)

Drawings from survey of Stronachullin Estate, Argyll and Bute, by Scotia Archaeology Ltd, 1995. (Mr J Lewis, Scotia Archaeology Ltd)

CLACKMANNANSHIRE

Report, colour prints and negatives from the examination of a shell midden at Braehead Golf Course, Cambus, Clackmannanshire, by D Hall and P J Ashmore, Historic Scotland, 1996. (Mr P Ashmore, Historic Scotland)

DUMFRIES AND GALLOWAY

Report of a pre-afforestation survey of Creebank, Bargrennan, Kirkcudbrightshire, Dumfries and Galloway, by C Lowe and J Rideout, Headland Archaeology Ltd, 1997. (Dr S Carter, Headland Archaeology Ltd)

Draft text of chapter on Early Historic Archaeology and History in Eastern Dumfriesshire, prepared for RCAHMS by D Craig, 1995. (Dr D Craig)

Drawings from excavations at Halfway House, Kirkcowan, Dumfries and Galloway, by O Owen, SDD/HBM-AOC, 1989. (Mr A Duffy, AOC (Scotland) Ltd)

Colour photographs of cross-fragments from Kirkconnel, Nithsdale, in Dumfries Museum, Dumfries and Galloway, taken in the course of the Kirkpatrick-Fleming survey. (Mr R J Mercer)

Report of a pre-afforestation survey at Mitchellsacks and Locherben, Closeburn, Dumfries and Galloway, by T Ward, Biggar Museum Trust, 1996. (Mr T Ward, Biggar Museum Trust)

Report (no 348.3) of an assessment of Steven's Croft and Millhousebridge, by Nethercleugh, by O Lelong, 1997. (GUARD)

Report and photographs of forestry survey at the Wigtown Blackpowder Works at Carsegown Farm, Newton Stewart, Dumfries and Galloway, by S Carter and J Rideout, Headland Archaeology Ltd, 1997. (Dr S Carter, Headland Archaeology Ltd)

EAST AYRSHIRE

Two colour slides of a hillfort or enclosure on south face of Beoch Hill, Dalmellington, East Ayrshire, by S Andrews. (Ms S Andrews)

Report (no 418) of assessment and field survey of Bowhouse Munitions Factory, Kilmarnock, East Ayrshire, by K Speller and C French, 1997. (GUARD)

Report and publication drawings of a forestry survey of Lochbrowan and Blackcraig, East Ayrshire, by S Carter and M Dalland, Headland Archaeology Ltd, 1996. (Dr C Lowe, Headland Archaeology Ltd)

Report (no 357.2) of an evaluation and watching brief at Pennyvenie, Area A, East Ayrshire, by G MacGregor and J Syme Duncan, GUARD, 1997. (GUARD)

Site day book of survey of Powharnal Burn, East Ayrshire, by J Lewis and D Reed, Scotia Archaeology Ltd, 1992. (Mr J Lewis, Scotia Archaeology Ltd)

EAST DUNBARTONSHIRE

Report of a survey of Campsie Glen, East Dunbartonshire, for Kelvin Valley Countryside Project, by J S Rideout and C J Russell-White, Alba Archaeology Ltd, 1997. (Mr J Rideout, Alba Archaeology Ltd)

EAST LoTHIAN

Report (no 8) of a survey of the Archerfield Estate, Dirleton, East Lothian, by A F Leslie and S T Driscoll. (Mr I Banks, GUARD)

Colour photographs of a model reconstruction of Dunbar Castle, East Lothian, by R Weatherhead, 1996. (R Weatherhead)

Report (no 306) of evaluation at St Michaels, Inveresk, East Lothian, by J Hamilton, Centre for Field Archaeology, 1996. (Mr A Dunwell, CFA)

Report and publication drawings of a marking-out survey at Markle, East Lothian, by M Dalland, Headland Archaeology Ltd, 1996. (Dr C Lowe, Headland Archaeology Ltd)

Report of evaluation at 35-41 Market Street, Musselburgh, East Lothian, by S Carter, Headland Archaeology Ltd, 1997. (Dr S Carter, Headland Archaeology Ltd)

Data structure report for an evaluation and watching brief at Whitekirk tithe barn, East Lothian, by C Lowe, Headland Archaeology Ltd, 1997. (Ms L Baker, Headland Archaeology Ltd)

Drawings from excavations at Winton House, East Lothian, by M Dalland, AOC (Scotland) Ltd, 1989. (Mr A Duffy, AOC (Scotland) Ltd)

CITY OF EDINBURGH

Letter by Mrs L Gladstone-Millar, 1992, accompanying photocopy of extract from Colinton Parish Magazine, March 1914, on medieval graveslabs at Colinton parish church, City of Edinburgh. (Mrs L Gladstone-Millar)

Copy of Edinburgh Archaeological Field Society newsletter, no 111, January 1997, reporting the discovery of the Cramond Lioness.

Archive from excavations at Edinburgh Castle, 1988–9. (Historic Scotland)

Report (no 6.6) on archive material from excavations at Edinburgh Castle, by S Bain and J Clark, GUARD, 1997. (GUARD)

Report (no 262) of cultural heritage survey of Holyrood Park, City of Edinburgh, by D Alexander, Centre for Field Archaeology, 1997. (Mr D Alexander, CFA)

Data structure report from an archaeological excavation at Old Dundas Castle, City of Edinburgh, by C E Lowe, Headland Archaeology Ltd, 1996. (Dr S P Carter, Headland Archaeology Ltd)

Archive from an excavation at Ratho, City of Edinburgh, by A Smith, AOC (Scotland) Ltd, 1993. (Mr A Duffy, AOC (Scotland) Ltd)

FALKIRK

Annotated drawing of section through the Antonine Wall at Nether Kinneil, near Inveravon, Falkirk, by E Price, 1974. (Dr R Hingley, Historic Scotland)

Archive from excavations at Kinneil House, Falkirk, by A Barlow, Scotia Archaeology Ltd, 1993 and 1994. (Mr J Lewis, Scotia Archaeology Ltd)

On loan for copying. Copies of three photographs of the Smith family c 1909–16, and a silver rose bowl inscribed 'To Miss Smith from friends who will always have pleasant memories of her kindness and hospitality during the excavation of the Roman fort at Mumrills, 1923–1928', believed to have been presented by A O Curle and G Macdonald. (Miss M Nicol)

FIFE

Report of a coastal assessment survey of Fife, from Kincardine to Fifeness, for Historic Scotland, by P Robertson, Maritime Fife, 1996. (Ms D Groom, Maritime Fife)

Report on the shipwreck heritage of Fife, by N C Dobson, Maritime Fife, 1997. (Ms D Groom, Maritime Fife)

Archive from an excavation at Charlestown Limekilns, Fife, by R Murdoch, Scotia Archaeology Ltd, 1996. (Mr J Lewis, Scotia Archaeology Ltd)

Report of an archaeological evaluation at Colton Opencast Remainder Site, by Wellwood, Dunfermline, Fife, by S Farrell, 1997. (Mr S Farrell)

Data structure report of excavation and watching brief at Craighead Golf Course, Balcomie, Fife Ness, by M Dalland, Headland Archaeology Ltd, 1996. (Headland Archaeology Ltd)

Report of a watching brief of trenching works across the Danes Dike at Craighead, Fife, by C Lowe and T Holden, Headland Archaeology Ltd, 1996. (Dr C Lowe, Headland Archaeology Ltd)

Report of Crail Main Drainage Scheme; an archaeological evaluation of the area at and adjacent to the Kilminning greenhouse, by M Dalland, Headland Archaeology Ltd, 1997. (Dr S Carter, Headland Archaeology Ltd)

Report on Crombie Point, by A Wood, Maritime Fife, 1997. (Ms D Groom, Maritime Fife)

Drawings from watching briefs carried out at Dunfermline Abbey, Fife, by Scotia Archaeology Ltd, 1993. (Mr J Lewis, Scotia Archaeology Ltd)

Site day book from excavation at Old Lauder Technical School, Dunfermline, by Scotia Archaeology Ltd, 1993. (Mr J Lewis, Scotia Archaeology Ltd)

Photographs and negatives from excavations at the Abbot's House, Dunfermline, 1988. (SUAT)

Report on East Wemyss Gasworks, by A Wood, Maritime Fife, 1997. (Ms D Groom, Maritime Fife)

Report and publication drawings of pre-afforestation survey of Falkland, Lomond Hills, Fife, by C Lowe and M Dalland, Headland Archaeology Ltd, 1996. (Dr S Carter, Headland Archaeology Ltd)

Archive from excavations at Falkland Palace, Fife, by Scotia Archaeology Ltd, 1995–7. (Mr J Lewis, Scotia Archaeology Ltd)

Additional excavation archive from Hallow Hill, comprising reports, computer disks, photographs and negatives, by E Proudfoot. (Mrs E Proudfoot)

Archive from excavations and watching briefs at Kellie Castle, by H Smith and J Terry, Scotia Archaeology Ltd, 1995. (Mr J Lewis, Scotia Archaeology Ltd)

Report on the Kincardine Foreshore Survey, by A Wood, Maritime Fife, 1997. (Ms D Groom, Maritime Fife)

Report, drawing and slides of excavation at Kinghorn Promenade (KH01), by R Cachart, SUAT, 1994. (SUAT)

Photographs from a graveyard survey at Leslie, Fife, by S Farrell, 1997. (Mr S Farrell)

Draft copy of paper on prehistoric flint and stone artefacts from the Lomond Hills, Fife, by M King, E Proudfoot, T Rees and A Saville, 1997. (Mr M D King, Fife Council)

Report (no 395) of survey and excavation of the Pictish cemetery, Lundin Links, Lower Largo, Fife, by B Will, GUARD, 1996. (GUARD)

Report of site evaluation of the former Co-op and adjacent site to the north of Brunton Road, Markinch, Fife, by T Holden, Headland Archaeology Ltd, 1996. (Dr C Lowe, Headland Archaeology Ltd)

Report on the Newport-on-Tay Wreck, by A Wood, Maritime Fife, 1997. (Ms D Groom, Maritime Fife)

Report (no 330) of watching brief at Pitreavie Golf Course, Pitreavie, Dunfermline, Fife, by C Swift, Centre for Field Archaeology, 1997. (Ms C A Swift, CFA)

Loaned for copying. A pre-1914 postcard of an artist's impression of Rosyth Naval Dockyard, Fife. (Dr I Fraser)

Excavation archive from St Andrews Castlecliffe, Fife, by Scotia Archaeology Ltd, 1988–90. (Mr J Lewis, Scotia Archaeology Ltd)

Drawings of the St Andrews Sarcophagus, by I G Scott, 1996. (Mr I G Scott)

Site day book and drawing from watching brief at St Mary's Courtyard, St Andrews, Fife, by A Barlow, Scotia Archaeology Ltd, 1995. (Mr J Lewis, Scotia Archaeology Ltd)

Excavation archive from St Nicholas Farm, St Andrews, Fife, by D W Hall, SUAT, 1986–7. (Mr N Robertson, SUAT)

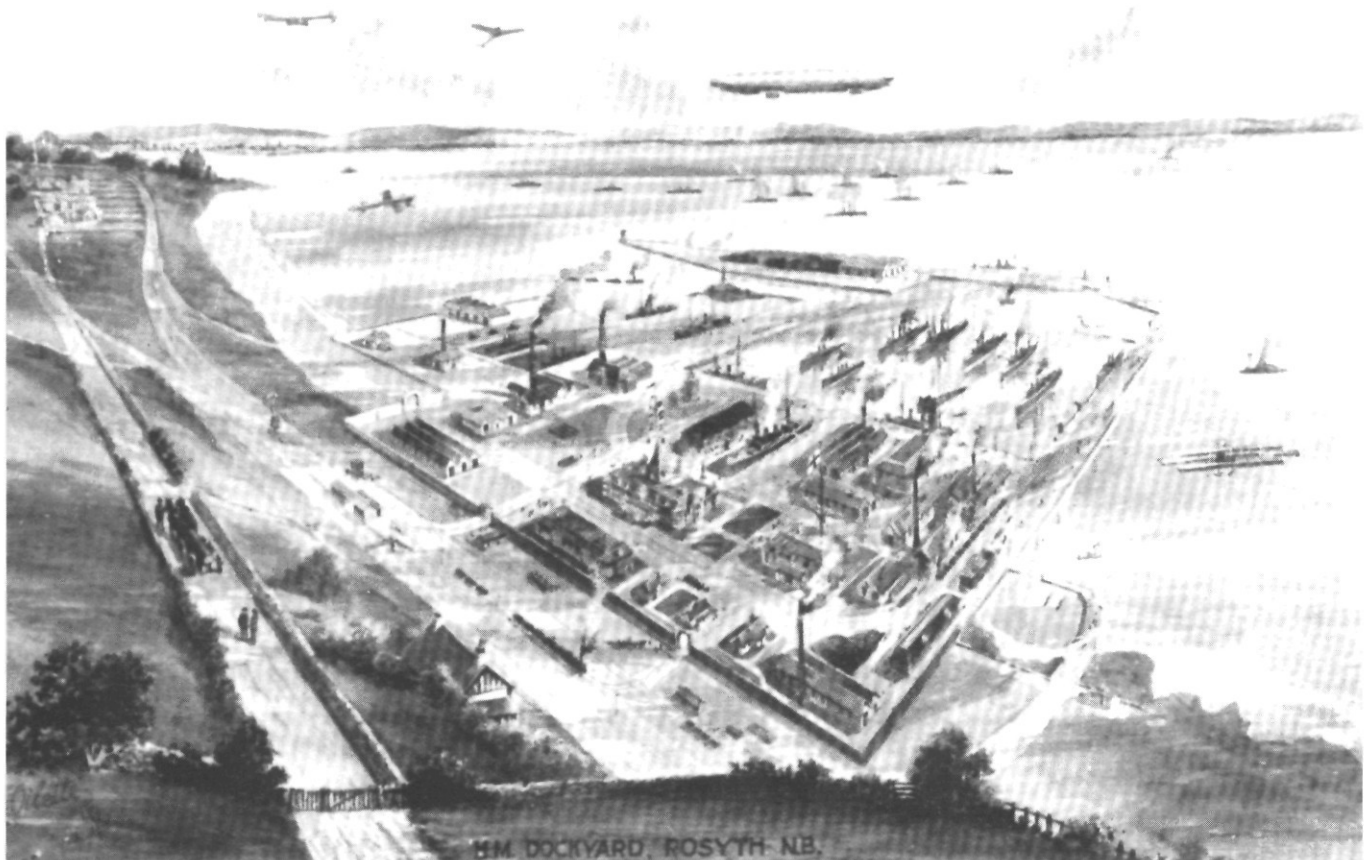


Fig 32 National Monuments Record of Scotland: H M Dockyard Rosyth, Fife. A visualisation (of between 1910 and 1914) of how the naval base would appear in its completed state, then scheduled for 1916. (RCAHMS D15716)

Reports, research notes, excavation records and slides from an excavation at Straiton, Fife, by Dr S Carter, AOC (Scotland) Ltd, 1993. (Mr A Duffy, AOC (Scotland) Ltd)

Report of an evaluation of land owned by the Forestry Commission in Tentsmuir, Fife, by S Carter and L Baker, and a report on a synthesis and interpretation of existing records of the archaeology of Tentsmuir, by S Carter, Headland Archaeology Ltd, 1997. (Ms L Baker, Headland Archaeology Ltd)

Photograph and account of the discovery of the Woodend Urn, 1951, and photograph of the Upper Kenly food vessel, 1985. (Mr M King, Fife Museums)

GLASGOW CITY

Two copies of 'Memoir of the Survey of the Cairns on Cathkin Muir, Carmunnock, 1973-1986' by Dr T C Welsh, 1996. (Dr T C Welsh)

Report of watching brief and report on human skeletal remains from Glasgow Cathedral (no 435), by L Johnstone and J Roberts, GUARD, 1997. (GUARD)

Report of survey of memorial stones in the kirkyard of Govan, City of Glasgow, by Catherine Cutmore, University of Glasgow, 1996. (Dr S T Driscoll, GUARD)

Report (no 175.3) on excavations at Govan Old Parish Church and Water Row, City of Glasgow, by S T Driscoll and R S Will, GUARD, 1997. (GUARD)

Reports (no 474) of a landscape and archaeological survey, and of a subsequent watching brief, of Greenbank Garden, Eastwood, City of Glasgow, for the National Trust for Scotland,

by H F James, O Lelong, J Taggart and G Tompsett, GUARD, 1996, and by P Duffy, GUARD, 1997. (GUARD)

Report (occasional paper no 16) of a survey of Queen's Park, City of Glasgow, by D Topen, Association of Certificated Field Archaeologists, 1996. (D Topen, ACFA)

Data structure reports, with plan, of archaeological excavation of the site at the junction of King Street and Queen Street, Rutherglen, City of Glasgow, by C Lowe and J Raven, and by M Dalland and J Raven, Headland Archaeology Ltd, 1997. (Headland Archaeology Ltd)

Report (no 328) of a watching brief at Springfield Quay, City of Glasgow, by C Evans and H F James, GUARD, 1996. (GUARD)

HIGHLAND

Report (no 110.3) on assessment and excavation at Allanfearn, Highland, by I Cullen, GUARD, 1996. (GUARD)

Notes on unenclosed platform sites on Allt Leth-allt and Allt an t-Sean-Achaidh, Morar, Highland, by D Rixson, 1996. (D Rixson)

Negatives from excavations at Alness, Highland, by AOC (Scotland) Ltd. (Mr A Duffy, AOC (Scotland) Ltd)

Correspondence, photograph and colour copy of photograph of open-air preaching site, and alleged 'thing', at Am Ploc, Torridon, Highland, by J C C Jordan, 1997. (Mr J C C Jordan)

Report of survey of proposed plantation at An Ruadh Bruach, Glen Shieldaig, Highland, by J Wordsworth, Wordsworth Archaeological Services, 1995. (Mr J Wordsworth, Wordsworth Archaeological Services)

- Copy of *Arc-eolas Rois*, community archaeology newsletter, by J Wordsworth, vol. 1, issue 1, winter 1995. (Mr J Wordsworth, Wordsworth Archaeological Services)
- Colour photographs of cruck-framed house at Balbeg, Glenurquhart, Highland, by J Wordsworth, Wordsworth Archaeological Services. (Mr J Wordsworth, Wordsworth Archaeological Services)
- Report of survey of Balnacruie of Deishar Farm, Boat of Garten, Highland, by J Wordsworth, Wordsworth Archaeological Services, 1996. (Mr J Wordsworth, Wordsworth Archaeological Services)
- Report of survey of Balnafoich Farm, Boat of Garten, Highland, by J Wordsworth, Wordsworth Archaeological Services, 1996. (Mr J Wordsworth, Wordsworth Archaeological Services)
- Report of survey of proposed plantation at Blairmore and Cudrish, Glenconvinth, Highland, by J Wordsworth, Wordsworth Archaeological Services, 1995. (Mr J Wordsworth, Wordsworth Archaeological Services)
- Publication drawings from the Caithness Survey. (Mr R Mercer)
- Surveys of concentric earthworks and possible church sites in Caithness and Sutherland, Highland, by the Caithness Field Club, 1996. (Mr G Leet)
- Excavation notes, reports, photographs, negatives and drawings from Camster Long Cairn, Highland, by L Masters, 1976–80. (Historic Scotland)
- Report and drawings of pre-afforestation survey at Cnoc Torr an Leamhainn, Highland Region, by J O'Sullivan and C Burgess, AOC (Scotland) Ltd, 1996. (Mr C Burgess, AOC (Scotland) Ltd)
- Report of survey of proposed plantation at Creag na Ceapaich, Dundonnell, Highland, by J Wordsworth, Wordsworth Archaeological Services, 1995. (Mr J Wordsworth, Wordsworth Archaeological Services)
- Report of assessment of land at Coul-na-Kirk, Glenurquhart, Highland, by J Wordsworth, Wordsworth Archaeological Services, 1995. (Mr J Wordsworth, Wordsworth Archaeological Services)
- Report of survey of proposed new access road for Dalcross Airport, Highland, by J Wordsworth, Wordsworth Archaeological Services, 1996. (Mr J Wordsworth, Wordsworth Archaeological Services)
- Photograph of drawing of obelisk in Dingwall, with sketch of double disc and Z-rod, from the Public Record Office, Kew. (Dr J N G Ritchie)
- Report of watching brief at the Meadows Business Park, Dornoch, Highland, by SUAT, 1997. (SUAT)
- Report of baseline survey of Dounreay Castle, Caithness, Highland, by S J Taylor, Procord Ltd, 1996. (Mr N Bridgland, Historic Scotland)
- Report of survey of proposed plantation at Druim Dubh, Kinloch Damp, Highland, by J Wordsworth, Wordsworth Archaeological Services, 1995. (Mr J Wordsworth, Wordsworth Archaeological Services)
- Report of watching brief of branch sewer, Drumbuie, Highland, by M Wildgoose, 1996. (Mr M Wildgoose)
- Reports (nos 320 and 335), of field evaluation at Dun Davie, Dornie, Highland, with data disk, by T Neighbour, Centre for Field Archaeology, 1997. (Mr T Neighbour, CFA)
- Archive from surveys of graveyards at Croy, Dunlichity, Inverness, Moy, Nairn, Croy, Kirkton of Ardersier and Breaklish, Highland, by S Farrell, 1996–7. (Mr S Farrell)
- Excavation archive material including notes, prints and negatives from Dairy Park, Dunrobin, Highland, by J Close-Brooks, 1977. (Dr J Close-Brooks)
- Report (no 299) of an excavation carried out at Durcha, Creich parish, Sutherland, Highland, by A Dunwell, Centre for Field Archaeology, 1996. (Mr A Dunwell, CFA)
- Reports and publication drawings of survey of townships at Easter Raitts, Badenoch, Highland, by M Dalland and A Smith, AOC (Scotland) Ltd, 1995. (Mr A Duffy, AOC (Scotland) Ltd)
- Report of a rapid archaeological assessment of Eskadale Moor, Highland, in advance of Woodland Grant Scheme, by J Harden, Archaeological Services, 1997. (Ms J Harden, Archaeological Services)
- Report of survey of a proposed plantation at Allt Coire an-t-Seilich, Glen Carron, Highland, by J Wordsworth, Wordsworth Archaeological Services, 1995. (Mr J Wordsworth, Wordsworth Archaeological Services)
- Copy of map with covering letter, of sites in the Gairloch area, Highland, prepared by R Wentworth of Gairloch Museum for E Proudfoot, 1989. (R Wentworth, Gairloch Museum)
- Interim report of the excavation of a township at Glen Brein, Stratherrick, Highland, by R G Hanley, Inverness Museum and Art Gallery, 1996. (Dr R G Hanley, Inverness Museum)
- Report of survey of proposed plantation in Glen Marksie, Highland, by J Wordsworth, Wordsworth Archaeological Services, 1996. (Mr J Wordsworth, Wordsworth Archaeological Services)
- Report of survey of proposed native pinewood plantations and enclosures in Glenfeshie, Highland, by J Wordsworth, Wordsworth Archaeological Services, 1996. (Mr J Wordsworth, Wordsworth Archaeological Services)
- Report of survey of Glenfinglas Estate, Highland, by S Carter and M Dalland, Headland Archaeology Ltd, 1997. (Dr S Carter, Headland Archaeology Ltd)
- Photographs and drawings of sculptured stones at Groam House, Highland, by I G Scott. (Mr I G Scott)
- Archive from excavations at Gruids, Sutherland, Highland, by S Carter, AOC (Scotland) Ltd, 1993. (Mr A Duffy, AOC (Scotland) Ltd)
- Notebook of J G Callander, containing notes on coins, medieval sculpture, archaeological sites and finds in various parts of Scotland, including excavations at Inchnadamph, Highland. (Mr F Hunter, Royal Museum of Scotland)
- Site day book and drawing of survey of Inverasdale, Highland, by J Terry, Scotia Archaeology Ltd, 1995. (Mr J Lewis, Scotia Archaeology Ltd)
- Selected list of recent Inverness Museum & Art Gallery (INVMG) archaeological accession numbers for matching with existing SMR finds entries, by R Hanley, Inverness Museum and Art Gallery, Highland, 1996. (Dr R Hanley, Inverness Museum)
- Archive from excavations at Balloan Park, Inverness, Highland, by J Wordsworth, AOC (Scotland) Ltd, 1990. (Mr A Duffy, AOC (Scotland) Ltd)
- Report of trial trenching at Slackbuie Avenue, Inverness, Highland, by J Wordsworth, Wordsworth Archaeological Services, 1996. (Mr J Wordsworth, Wordsworth Archaeological Services)
- Report of detailed analysis of a heather thatch, daub and mortar samples from Johan Cottage, Fort Augustus, Highland, by T

RCAHMS

Holden, Headland Archaeology Ltd, 1997. (Dr S Carter, Headland Archaeology Ltd)

Report of watching brief at the site of the new public toilets, John O'Groats, Highland, by J Wordsworth, Wordsworth Archaeological Services, 1996. (Mr J Wordsworth, Wordsworth Archaeological Services)

Site records and drawings from excavations at Kilearnan Hill, Sutherland, Highland. (Ms A McIntyre)

Photographs and a slide of the Kincardine stone, and of an enclosure near Loch Dola, Lairg, Highland, by J Close-Brooks. (Dr J Close-Brooks)

Report of survey of Kinchurdy Farm, Boat of Garten, Highland, by J Wordsworth, Wordsworth Archaeological Services, 1996. (Mr J Wordsworth, Wordsworth Archaeological Services)

Report of pre-afforestation survey at Kinlochleven, Highland, by C Burgess, AOC (Scotland) Ltd, 1996. (Mr C Burgess, AOC (Scotland) Ltd)

Field record sheets and slides of sites in Knoydart, Highland, recorded by R C Callander, 1996. (Mr R C Callander)

Archive material from excavation at Langwell, Strathoykell, Highland, by H Nisbet, 1973-4. (Miss H Nisbet)

Report of forestry survey at Ledmore and Migdale, Spinningdale, Sutherland, Highland, by S Carter and J Wordsworth, Headland Archaeology Ltd, 1997. (Dr S Carter, Headland Archaeology Ltd)

Report of survey of proposed plantation at Loch Bad na Sgalaig, Gairloch Estate, Highland, by J Wordsworth, Wordsworth Archaeological Services, 1996. (Mr J Wordsworth, Wordsworth Archaeological Services)

Report of survey of proposed plantation at Lochan Leathan, Applecross, Highland, by J Wordsworth, Wordsworth Archaeological Services, 1995. (Mr J Wordsworth, Wordsworth Archaeological Services)

Report of survey of forestry plantation at Mullach an Tuir, Glencannich, Highland, by J Wordsworth, Wordsworth Archaeological Services, 1996. (Mr J Wordsworth, Wordsworth Archaeological Services)

Reports of watching brief at 73 High Street, and of trial trenching at Lochloy Road, Naim, Highland, by S Farrell, 1997. (Mr S Farrell)

Correspondence and photocopy concerning an 18th-century plan, probably of Newton of Petty, Highland, 1750. (Mr P Harbison)

Report of watching brief at the site of proposed new sewage treatment works, North Ballachulish, Highland, by J Wordsworth, Wordsworth Archaeological Services, 1996. (Mr J Wordsworth, Wordsworth Archaeological Services)

Report (occasional paper no 18) of a survey of four townships at Balachuim, Balmeanach, Inbhire and Brae, on Raasay, Highland, by J Macdonald and J Scott Wood, Association of Certificated Field Archaeologists, 1996. (Mr D Topen, ACFA)

Copy of the Inventory of Archaeological and Historical Features on SSSIs in Skye and Lochalsh, Highland, by Scottish Natural Heritage, 1992. (Ms D Stephenson, SNH)

Report of rapid survey of Strath Tirry, Sutherland, Highland, in advance of afforestation, by J Harden and J Wordsworth, Archaeological Services, 1996. (Ms J Harden, Archaeological Services)

Drawings of sculptured stones from Tarbat Old Parish Church, and Rosemarkie, Easter Ross, Highland; Drainie, Moray; and Lethnott, Angus, by I G Scott. (Mr I G Scott)

Engineer's drawings of elevations and sections of structural works at the Uchdrachan Bridge, Highland, by G Walker and Associates, 1996. (Mr N Bridgland, Historic Scotland)

Field notes and photographic archive of a survey of coastal erosion between Ullapool and Lochinver, Highland, by A Long, 1996. (Mr A Long)

Report (no 432) of resistivity survey of Wardlaw Mausoleum, Kirkhill, Inverness, by D Abernethy, GUARD, 1997. (GUARD)

Report of survey of proposed native pinewood plantations at Wester Guisachan, Highland, by J Wordsworth, Wordsworth Archaeological Services, 1996. (Mr J Wordsworth, Wordsworth Archaeological Services)

MIDLOTHIAN

Archive from excavations at Dalhousie Castle, Midlothian, by Scotia Archaeology Ltd, 1996-7. (Mr J Lewis, Scotia Archaeology Ltd)

Archive from excavations at Fairfield House, Dalkeith, Midlothian, by Scotia Archaeology Ltd, 1997. (Mr J Lewis, Scotia Archaeology Ltd)

Reports, excavation records, negatives, photographs, and slides from excavation at Melville Nurseries, Midlothian, by P Raisen, AOC (Scotland) Ltd, 1989. (Mr A Duffy, AOC (Scotland) Ltd)

Report (no 340) of watching brief near Newfarm, Dalkeith, Midlothian, by A R Rees, Centre for Field Archaeology, 1997. (Mr A R Rees, CFA)

MORAY

Photographs, with caption list, of excavations at the Boghead mound, Fochabers, Moray, by A Burl, 1972. (Mr G Barclay, Historic Scotland)

Drawings of a fragment of a carved stone in Elgin Museum, Moray, by I G Scott, 1996. (Mr I G Scott)

Archive list, drawings, photographs and negatives of excavation at Kinloss Abbey, Moray, by J Lewis, Scotia Archaeology Ltd, 1995. (Mr J Lewis, Scotia Archaeology Ltd)

Copies of record sheets and contact prints of aerial photographs of sites recorded in Moray by Aberdeen Archaeological Surveys, 1996-7. (Mrs M Greig, Aberdeenshire Council)

Report of contour survey of Quarrywood henge, near Elgin, Moray, by M Dalland, Headland Archaeology Ltd, 1997. (Dr S Carter, Headland Archaeology Ltd)

Reports, excavation records, negatives, photographs, slides and pottery sherd from excavation at Sueno's Stone, Forres, Moray, by R P J McCullagh, AOC (Scotland) Ltd, 1990-91. (Mr A Duffy, AOC (Scotland) Ltd)

NORTH AYRSHIRE

Archive reports from excavations at Machrie North, Tormore, and Kilpatrick, Arran, North Ayrshire, by CEU. (Historic Scotland)

Report (occasional paper no 20) of a field survey of a pre-clearance settlement at Gargadale, Isle of Arran, North Ayrshire, by A Johnstone and J Scott Lewis, Association of Certificated Field Archaeologists, 1996. (D Topen, ACFA)

Report (no 454) of watching brief at Kilwinning Abbey, North Ayrshire, by I Cullen, GUARD, 1997. (GUARD)

Archive from excavation at Abbeygate, Kilwinning, North Ayrshire, by Scotia Archaeology Ltd, 1994. (Mr J Lewis, Scotia Archaeology Ltd)

Report on the Lawhill Farm Discovery Project, by V E Bickers, Largs Young Archaeologists' Club, 1996. (Ms V E Bickers)

Report (occasional paper no 17) of an archaeological survey of Little Cumbrae, North Ayrshire, by J Macdonald, Association of Certificated Field Archaeologists, 1996. (D Topen, ACFA)

Reports (no 402.2) of mitigation excavations undertaken as part of the Carradale to Brodick, Arran, North Ayrshire, 33Kv North Line Rebuild Stage II: Monyquil Farm, by R Harry, and Machrie Moor, by K J Taylor, GUARD, 1997. (GUARD)

Report on survey at Whitecraigs Farm, North Ayrshire, by V E Bickers, Largs Young Archaeologists' Club, 1996. (Ms V E Bickers)

NORTH LANARKSHIRE

Drawings of watching briefs at Bothwellhaugh Roman Fort, by D Reed, Scotia Archaeology Ltd, between 1992 and 1994. (Mr J Lewis, Scotia Archaeology Ltd)

Report (no 289) of a trial excavation carried out at Tams Loup Quarry, Harthill, North Lanarkshire, by K Cameron, Centre for Field Archaeology, 1996. (Ms H Skinner, CFA)

ORKNEY

Drawing from excavations at Birsay Parish Church, Orkney, by AOC (Scotland) Ltd. (Mr A Duffy, AOC (Scotland) Ltd)

Archive from excavation in the Earl's Palace, Birsay, Orkney, by J Lewis, 1978. (Mr J Lewis, Scotia Archaeology Ltd)

Archive from excavations at Grainbank, St Ola, Orkney. (Dr S Carter, Headland Archaeology Ltd and Mr N Fojut, Historic Scotland)

Excavation archive comprising notebooks, drawings, photographs and negatives from the Howe, Orkney, by D Haigh and B Smith, 1981-2. (Dr S Carter, Headland Archaeology Ltd)

Excavation archive comprising drawings and photographs from Isbister, South Ronaldsay, Orkney, by R Simison, 1980-82. (Dr S Carter, Headland Archaeology Ltd)

Report, with plan, of excavations at Just About Anything earth-house, Hatston, Kirkwall, Orkney, by D Haigh and B Smith, 1982. (Mr G Barclay, Historic Scotland)

Prints and slides of sites in Orkney, by D Easton. (Mr D Easton)

Report of excavation of a stalled cairn by CEU, 1984-5, at the Point of Cott, Westray, Orkney, by J Barber. (Historic Scotland)

Drawings from excavations at Pool, Sanday, Orkney. (Historic Scotland)

Reports, excavation records, negatives, photographs and slides of excavation at Rapness, Orkney, by J Barber, AOC (Scotland) Ltd, 1985. (Mr A Duffy, AOC (Scotland) Ltd)

Post-excavation photographs and plan of Riggan of Kami, Deerness, Orkney, by S Carter and D Haigh. (Dr S Carter, Headland Archaeology Ltd)

Finds report, and photographs, from Saevar Howe, Orkney, by C E Batey and C D Morris, VESARP, 1982. (Mr G Barclay, Historic Scotland)

Report (no 437) of an evaluation and watching brief at Voydale, Orkney, by P Duffy and S Bain, GUARD, 1997. (GUARD)

PERTH AND KINROSS

Aerial photographs, with negatives, of sites in Perth and Kinross, by W Fuller. (Dr D J Woolliscroft, University of Manchester)

Photographs of excavations at Ardoch Roman fort, Perth and Kinross, in 1896, together with two later views. (Mr M Hall, Perth Museum and Art Gallery)

Report and drawings of a pre-forestation survey of Auchtenny, Perth and Kinross, by C Lowe and M Dalland, Headland Archaeology Ltd, 1996. (Dr C Lowe and Dr S Carter, Headland Archaeology Ltd)

Report on visits to sites on Forestry Commission land at Camserney, Dull Wood, Murray's Hill, Madderty, and Kepranich, Lochtayside, Perth and Kinross, by M Hall, Perth Museum and Art Gallery, 1997. (Mr M Hall, Perth Museum)

Site records, reports, drawings, photographs, negatives and slides from excavations at Carn Dubh, Perth and Kinross, by J Rideout, 1987. (Mr J Rideout, AOC (Scotland) Ltd)

Data structure report for the excavations of the Cleaven Dyke and Littleour, Perth and Kinross, 1993-6, by G Barclay and G S Maxwell. (Mr G Barclay, Historic Scotland)

Colour slides of section of Cleaven Dyke, Perth and Kinross, by D Gallagher, 1974. (Mr D Gallagher)

Preliminary report on the Late Bronze Age hoard from Conymuckloch, Amulree, Perth and Kinross, by T Cowie, M Hall, B O'Connor and R Tipping. (National Museums of Scotland)

Colour slides of the excavations at Coupar Angus Sawmill, Perth and Kinross. (Mr A Duffy, AOC (Scotland) Ltd)

Report (no 297) of evaluation at East Powside, Almondbank, Perth and Kinross, by J Hamilton, Centre for Field Archaeology, 1996. (CFA)

Report of an archaeological and historical survey of Gleann Fearnach, Perth and Kinross, by J Harris, 1997. (Dr J Harris)

Notes, drafts and statistics of the Glenlednock project, Perth and Kinross, by E C Bain. (Miss E C Bain)

Publication drawings from report of forestry survey at Kynachen, Perth and Kinross, by Headland Archaeology Ltd. (Dr S Carter, Headland Archaeology Ltd)

Archive from excavations at Loanleven 1 and 2, Perth and Kinross, by C Lowe, AOC (Scotland) Ltd, 1988, 1990. (Mr A Duffy, AOC (Scotland) Ltd)

Transcriptions, by D J Woolliscroft, of excavation notes, with sketches, of excavations at Parkneuk Wood, Innerpefferay, Perth and Kinross, by D Lye, 1967. (Dr D J Woolliscroft, University of Manchester)

RCAHMS

Archive material from excavations by Scottish Urban Archaeological Trust, in Perth, including: Thistle Tavern Close, Perth, by L M Blanchard, 1977; Canal Crescent, by D P Bowler, 1983; 80 South Street, by D Bowler, 1983; Murray Street, by D Bowler, 1985; 10 Blackfriars Street, by R Cachart, 1988; St Catherine's Road, by R Cachart, 1988; New Row/Market Street, by R Cachart, 1990; New Row/Market Street, by R Cachart, 1991; Princes Street/Marshall Place, by R Cachart, 1991; 62 South Street/Cow Vennel, by R Cachart, 1991; South St John's Place, by C F Falconer, 1991; 62-64 High Street, by C Moloney, 1992; 153-154 South Street, by D Hall, 1992; Blackfriars Street, by R Cachart, 1993; St Catherine's Retail Park, by J R Mackenzie, 1993; Perth Museum and Art Gallery, George Street, by D Perry, 1995; Whitefriars Street, by P Holdsworth. (SUAT)

Slides, with notes of tank-traps on the North Inch, Perth, by Mark Hall, Perth Museum and Art Gallery. (M Hall, Perth Museum)

Site notebooks and prints from excavations at Strageath, Perth and Kinross, 1973-86, by S S Frere. (Mr F Hunter, National Museum of Scotland)

RENFREWSHIRE

Archive comprising notebooks, drawings, photographs and correspondence from excavations at Craigmarnoch, Renfrew, by H C Nisbet, 1964. (Ms H C Nisbet)

SCOTTISH BORDERS

Colour aerial photographs, with notes, of various sites in the Scottish Borders, by R Strathie. (Mr R Strathie)

Data structure reports of evaluations and watching briefs at Bridge Street, Kelso, Scottish Borders, by M Dalland, and by T G Holden and C E Lowe, Headland Archaeology Ltd, 1997. (Dr S Carter, Headland Archaeology Ltd)

Report of a watching brief at Dreva Craig, Broughton, Scottish Borders, by C Burgess, AOC (Scotland) Ltd, 1997. (Mr C Burgess, AOC (Scotland) Ltd)

Additional archive from excavations at the Dunion, Scottish Borders (CEU/AOC 67), by J Rideout, AOC (Scotland) Ltd, 1984-7. (Mr A Duffy, AOC (Scotland) Ltd)

Details of Roman sites discovered on Lee Pen, Innerleithen, Craik Forest, and Peebles, a broch at Bowland, and bridge at Gattonside, Scottish Borders, by J W Elliot. (Mr J W Elliot)

Report (no 303) of the A1 Lemington to Howburn evaluation, Scottish Borders, by J Hamilton, Centre for Field Archaeology, 1996. (Ms H Skinner, CFA)

Archive from an excavation at Neidpath Castle, Scottish Borders, by Scotia Archaeology Ltd, 1993. (Mr J Lewis, Scotia Archaeology Ltd)

Report of archaeological site inspection at Murray Place, Peebles, Scottish Borders, by C Lowe, Headland Archaeology Ltd, 1997. (Headland Archaeology Ltd)

Research notes on St Ebba and St Abb's Head, Scottish Borders, by R Weatherhead, 1996. (R Weatherhead)

Additional photographic archive from excavations at Hillslap Tower, Scottish Borders, 1983-4. (Mr J Lewis, Scotia Archaeology Ltd)

Publication drawings of a survey of Swindale, Scottish Borders, by AOC (Scotland) Ltd. (Mr C Burgess, AOC (Scotland) Ltd)

SHETLAND

Interim report (no 1) of Old Scatness Broch and Jarlshof Environs Project, Shetland, by S J Dockrill and J M Bond, University of Bradford, and V E Turner, Shetland Amenity Trust, 1995. (Shetland Amenity Trust/University of Bradford)



Fig 33 National Monuments Record of Scotland. A dramatic aerial view showing the massive scale of quarrying at the Dunion, Borders, which prompted the excavation by CEU of house platforms and defences between 1984 and 1986. (Historic Scotland)

Publication drawings of a survey of Stanydale, Shetland, by AOC (Scotland) Ltd, 1966. (Mr C Burgess, AOC (Scotland) Ltd)

SOUTH AYRSHIRE

Report (no 394) on evaluation at Baltersan Tower House, South Ayrshire, by S Halliday and J O'Sullivan, GUARD, 1996. (GUARD)

Reports from Girvan Sewerage Scheme, South Ayrshire: (no 279.2) archaeological fieldwalking, Phase 4, 1996; (no 303) watching brief, Phase 3, 1997, both by D Abernethy, GUARD. (GUARD)

Report (no 371) on watching brief at a British Gas installation at William Grant & Sons, Girvan, South Ayrshire, by B McGill, GUARD, 1996. (GUARD)

Reports (nos 396A, B, C) of watching briefs and excavations of William Grant & Sons Distillery, Girvan, South Ayrshire, Areas A, B and C, Ladywell Farm, by P Duffy, 1997, G MacGregor and P Duffy, 1997, and K Speller and I Banks, 1997. (GUARD)

Report (no 422) of assessment of Loudon Hall and Boat Vennal, Ayr, South Ayrshire, by K Speller and K Brady, GUARD, 1996. (GUARD)

SOUTH LANARKSHIRE

Archive from excavations at Biggar Common, South Lanarkshire, by D Johnson, AOC (Scotland) Ltd, 1990. (Mr A Duffy, AOC (Scotland) Ltd)

Second interim report of the Pre-History North of Biggar Project, by Biggar Museum Trust, 1995-6. (Mr T Ward, Biggar Museum Trust)

Research notes, correspondence and colour photographs by R J Smith of sculpture by T Hawkins on rock outcrops at Blantyre Priory, South Lanarkshire, 1996-7. (Mr R J Smith)

Archive from excavations at Bothwell Castle, South Lanarkshire, by Scotia Archaeology Ltd, 1987, 1991 and 1993. (Mr J Lewis, Scotia Archaeology Ltd)

Copy of listing of excavation archive from Chatelherault, South Lanarkshire, by Kirkdale Archaeology, 1980-81, 1995. (Kirkdale Archaeology)

Report (no 439) of desk-top assessment of Hare Hill/Climpy, Forth, South Lanarkshire, by J S Duncan, GUARD, 1997. (GUARD)

Publication drawings from report on Camps Water, South Lanarkshire, by Headland Archaeology Ltd. (Dr S Carter, Headland Archaeology Ltd)

STIRLING

Archive from excavation of fort and homestead at Bannockburn, Stirling, by CEU, 1982, 1984 and 1985. (Mr J Rideout)

Notes and photographs of Clach na Briton, Stirling, said to mark the boundary between Dalriada and Strathclyde, by E B Rennie, 1996. (Mrs E B Rennie)

Typescript reports, correspondence, photographs and drawing of a short cist at Dunblane Cathedral, Stirling, excavated in 1975 by A R Gordon and R B Gourlay. (Dr D Low, Highland Council)

Report (no 430) of survey of woodlands around Loch Katrine, Stirling, by I Cullen and G Tompsett, GUARD, 1997. (Ms I Cullen, GUARD)

Report of forestry survey at Muirpark, Stirling, by S Carter and J Rideout, Headland Archaeology Ltd, 1997. (Dr S Carter, Headland Archaeology Ltd)

Report (occasional paper no 9) of a field survey of deserted townships at Tirai, Glen Lochay, Killin, Stirling, by A Johnstone and J Scott Wood, Association of Certificated Field Archaeologists, 1996. (Mr D Topen, ACFA)

WEST DUNBARTONSHIRE

Report (no 431), of watching brief at Carleith Primary School, West Dunbartonshire, by D Abernethy, GUARD, 1997. (GUARD)

WEST LoTHIAN

Archive from an excavation at Blackness Castle, West Lothian, by R Murdoch, Scotia Archaeology Ltd, 1994. (Mr J Lewis, Scotia Archaeology Ltd)

Archive from excavations at Linlithgow Palace, West Lothian, by J Cannell, Scotia Archaeology Ltd, 1987. (Mr J Lewis, Scotia Archaeology Ltd)

Archive, comprising notebooks, photographs, negatives and slides of excavations at Niddry Castle, West Lothian, by C A Kelly, 1989-90. (Mrs E Proudfoot)

WESTERN ISLES

Field notes and colour photographs of shielings and beehive structures in the Aird Mhor and Aird Bheag area, Uig, Lewis, Western Isles, by E J Logan, 1995. (Ms E J Logan)



Fig 34 National Monuments Record of Scotland: A beehive hut at Fìdigh Eachdrach, Uig, photographed by E J Logan during a survey of shielings on Lewis, Western Isles. (Ms E J Logan)

Excavation archive material including notes, prints and negatives, from Cnip, Uig, Lewis, Western Isles, by J Close-Brooks. (Dr J Close-Brooks)

Archive from excavations at Loch Portain, North Uist, Western Isles, by A Crone, AOC (Scotland) Ltd, 1987. (Mr A Duffy, AOC (Scotland) Ltd)

Archive from excavations at Sollas, North Uist, Western Isles, by R J C Atkinson, 1957. (Dr E Campbell, University of Glasgow)

Data structure report (no 281.1) of the Vallay Strand Project, North Uist, Western Isles, by A Dunwell and C Clarke, Centre for Field Archaeology, 1996. (Mr A Dunwell, CFA)

Photographs and negatives, from the survey of North Rona and Sula Sgeir, Western Isles, by H C Nisbet and R A Gailey, 1958,

RCAHMS

with photographs by M L Smith, 1952, and M J H Robson, 1966. (Miss H C Nisbet)

Interim report of St Kilda stone implements project, by A Fleming and M Edmonds, 1996. (Mr A Fleming)

Report of radiocarbon dating proposal of thin section analysis of peat samples from the Gap, Hirta, St Kilda, Western Isles, by S Carter, Headland Archaeology Ltd, 1996. (Dr S Carter, Headland Archaeology Ltd)

General report of St Kilda Work Parties, 1995, by R Turner, National Trust for Scotland. (Mr R Turner, National Trust for Scotland)

Reports of excavations and surveys by the University of Sheffield on South Uist, Western Isles: the Late Bronze Age and Early Iron Age settlement at Cladh Hallan, by S Atkinson, J Mulville and M Parker Pearson, 1996; Sithean Biorach, Cille Pheadair, a Norse period settlement on South Uist, by M Parker Pearson, M Brennand, and H Smith, 1996; Bornish site 89, Beinn na Mhic Aongheis, by P Marshall, J Mulville, and M Parker Pearson, 1996; report of South Uist Machair archaeological survey and management project, by M Parker Pearson, 1993–6. (Mr M Parker Pearson, University of Sheffield)

IRELAND

Report (no 365) of excavation of the north range of Sherkin Island Friary, Ireland, by J O'Sullivan, GUARD, 1996. (J O'Sullivan, GUARD)

PRINCIPAL BUILDINGS ACCESSIONS October 1996 to September 1997

ABERDEENSHIRE

Seven 1866 Ordnance Survey maps relating to the Abergeldie Estate, Aberdeenshire. (Deposited by the National Trust for Scotland) *Accession Number: 1997/10*

Survey of a Private Collection of late 19th and early 20th-century photograph albums relating to Drum Castle. Views copied include exteriors and interiors of Drum Castle; exteriors and interiors of Barra Castle; views of the Old Kirk, Drumoak; and Princes Street, Edinburgh c 1905. (Lent for copying by Dr James Irvine, c/o Drum Castle per Christopher Hartley, National Trust for Scotland) *Accession Number: 1997/33*

A copy of a resurvey of Leith Hall Stables by Leslie F Hunter, Chartered Architect, Portsoy, carried out in May 1996 as part of the National Trust for Scotland Quinquennial Survey. (Deposited in the NTS Collection by W N Sharp) *Accession Number: 1997/49*

ARGYLL AND BUTE

The Marchioness of Bute's original text for the Mount Stuart Guide Book which was prepared for the opening of the house to the public in 1995. (Presented by Gavin Stamp, editor of the Guide Book) *Accession Number: 1997/26*

Dyelines of two working drawings, one with additional colour, of a bridge over the River Orchy, Argyll and Bute, designed by Thomas S Tait for Sir J Burnet Tait & Lorne Architects. The drawings are undated but were probably executed in 1935. Also,

a typescript of an article by Murdo MacDonald, Archivist, Argyll and Bute Council, on the design and construction of the bridge. (Presented by Murdo MacDonald, Archivist, Argyll and Bute Council) *Accession Number: 1997/47*

DUMFRIES AND GALLOWAY

NMRS survey of a Private Collection of design drawings for the addition of a studio and picture gallery to Broughton House, Kirkcudbright, by Honeyman Keppie & Mackintosh. Comprising elevations, section and plans, the drawings are the client copies produced in January 1909 for the artist E A Hornel. (Lent for copying by the National Trust for Scotland) *Accession Number: 1997/120*

Survey of a Private Collection of James Barbour drawings, all relating to projects in the Dumfries area: Maxwelltown Free Church, 1865; Closeburn Church, 1877; Moffat Baths, 1871; Thornhill Police Station, 1908; and Barbour's own house, St Christopher's, English Street, Dumfries, 1872. (Lent for copying by John Copland, Sutherland Dickie & Copland Architects per Anthony Wolffe) *Accession Number: 1997/24*

EAST AYRSHIRE

A photograph album inscribed 'Views of Fenwick by H S P Taylor' dating from c 1870. This collection of high-quality amateur views includes buildings in and around Fenwick and places particular emphasis on the survival of thatch. (Purchased) *Accession Number: 1997/96*

EAST LoTHIAN

A photograph album compiled between 1909 and 1942 which records visits to various houses, principally Luffness Mill, East Lothian. The amateur views show the exteriors and gardens of houses throughout Scotland including 'Dalnaskill House, Broughton, Peebleshire' and 'Houndwood, Reston'. A rare early view of the British Oil & Cake Mills Ltd office at Seafield is accompanied by two 1927 views of its extension which record the 'Removal of Intermediate House'. Another (unrelated) album has several views of a cottage 'Blue House, St Boswells, June 1927' and an unidentified Borders farm, probably in the vicinity of the cottage. (Purchased) *Accession Number: 1997/1*

Material relating to Brunton Shaw Wireworks, Musselburgh, comprising: a pamphlet on cold rolled steel strip dating from the 1950s; six pamphlets on wire products; a copy of 'The Forth Road Bridge, the Official Story', 1964; a copy of 'Reconstruction of the Humber Bridge', 1988; a copy of an inventory of wire rope-making equipment, 1996, with photographs and plant description from Brunton's Musselburgh site; six items of stationery showing the company letter headings, address, business logo and so on; and a film dyeline plan of the ropery layout from 1990. Items lent for copying comprise four colour photographs showing wire products of the Musselburgh site, eleven black and white photographs of the aftermath of the 1950 fire and a 1926 guide to the Musselburgh site, the company and its products. (Presented by Andrew B Smith and Duncan Tait, Brunton Shaw Limited, who also lent material for copying by NMRS) *Accession Number: 1997/118*

A set of 23 design drawings for buildings in East Lothian including 'Proposed New Baths' for the Roxburgh Marine Hotel, R M Cameron, 1899; the Infectious Diseases Hospital, Belhaven,

Sydney Mitchell & Wilson, 1901–03; Dunbar Police Station, Robert Orr, undated; a gate lodge for the Eastern District Hospital, Belhaven, Robert Orr, 1911; and a development on Church Street, Dunbar, J B Swanston, 1901. (Presented by Professor Roland Paxton) *Accession Number: 1997/14*

EAST RENFREWSHIRE

Further copy photographic material relating to Newton Mearns compiled by Ken Melvin for exhibition. See also *Acc. Nos: 1995/41 and 1997/9*. (Deposited by Ken Melvin) *Accession Number: 1997/51*

CITY OF EDINBURGH

A fragment from the roof of Holyrood Chapel labelled 'Fragment of an oak beam from the original roof of Holyrood Chapel, Palace of Holyrood House. Taken out of the top of the south wall of the nave in which it was embedded; and given to me on the spot by W T Oldrieve who was then in charge of the building and was engaged in the work of strengthening and protecting the ruin under H M Board of Works'. (Presented by Miss Alexia Lindsay who had been given the fragment by Mrs Murial Hope) *Accession Number: 1997/15*

'The Davidsons of Muirhouse by Thomas Davidson of Muirhouse, LLD, FRS, FGS, FLS etc'. Thomas Davidson, a palaeontologist, who was born in 1817 compiled this extraordinary illustrated record of his family's history. The album contains watercolours, engravings, cuttings, a piece of the family tartan and drawings of buildings associated with the Davidsons, principally Muirhouse, Davidsons Mains, Edinburgh, Hatton House and Bemersyde Tower. Old Muirhouse is sketched as is the new house to show Thomas Davidson's additions; the latter is drawn by William J Davidson, Thomas's son, in the 1880s. Among the miscellaneous notes is a list of the pictures at Muirhouse and a sketch of the 'shields on dining-room ceiling at Muirhouse'. Among the accounts of the life of prominent family members is an eye-witness description by Captain William Davidson of the Battle of Waterloo. In addition to the album are two volumes of Captain Davidson's letters to his grandson William, written between 1861 and 1862 (shortly before his death) which describe his adventurous life. Volume two is titled 'autobiography' and contains a photographic portrait of the author. Companion volumes provide an 'explanation' of the letter-books. A bound extract from Volume VIII of the 'Geological Magazine', 1871, comprises a 'Sketch of the Scientific Life of Thomas Davidson' and has additional cuttings, notes and illustrations pasted in. (Purchased) *Accession Number: 1997/18*

Four photograph albums compiled by Alexander Crum Brown, a Professor of Chemistry at Edinburgh University. The albums record the family home at 8 Belgrave Crescent, Edinburgh, from 1900–03 with views of the interior and exterior, including views from the windows, and the garden. Crum was the first occupant of the house which was built in 1871. Other albums in the set are principally concerned with his travels in Switzerland. *Accession Number: 1997/2*

A copy of 'Skizzen', Otto Reich (undated), which belonged to Thomas S Tait, Architect, who has signed the volume and used the end-paper for sketching. Between the pages is a sketch design for a memorial on a loose sheet of tracing paper. Tait's

papers are dispersed and this is one of the few autograph possessions known to exist.

'Fireplaces by Hoole', Falkirk, c 1960s, a fully illustrated trade catalogue. (Purchased)

A 19th-century, boxed wooden model of a church originally thought to be related to the design of St Paul's & St George's, Broughton Street, Edinburgh. The model has been displayed in the church for some time and, although not an architectural design model as such, is of great associational interest. (Presented by St Paul's & St George's Vestry Committee) *Accession Number: 1997/27*

Survey of a Private Collection of designs for Fettes College, Edinburgh. The designs, not all of which were executed, relate to Robert Rowand Anderson's 1883 alterations and additions. The rear extension to the main college building is included as well as plans of the subsidiary houses of Moredun, Carrington and Glencorse; the swimming pool; lodges; Moredun Crescent; and a general plan of the site. (Lent for copying by Fettes College, Edinburgh) *Accession Number: 1997/35*

A collection of photographs of Craigmillar Laundry Works, West Savile Terrace, Edinburgh, which was built in 1881 and demolished in 1988. Craigmillar Steam Laundry, as it was originally known, was perceived as a philanthropic employer providing respectable work for young women. The photographs date from 1907 and record the development of the works as they kept pace with new technology. A major redevelopment was carried out in 1933 and another in 1952 when the works stopped generating their own electricity and joined the National Grid. Views include the pressing machines in use, the delivery of the new boiler in 1933, and the machinery in operation during the 1950s. Also included is a photocopy of 'A History of Craigmillar Laundry Limited: 1881–1981', John A F Gibb. (Presented by John Gibb, Craigmillar Laundry Works) *Accession Number: 1997/36*

An 'Inventory and Valuation' of 6 Ainslie Place, Edinburgh, taken by Whytock & Reid on behalf of Leslie Grahame-Thomson, Architect, for insurance purposes in November 1948. The architect ran his practice from the premises and the inventory details the furnishings of his 'Drawing Office', 'Private Office' and 'Main Office'. (Presented by Murdo MacDonald, Argyll and Bute District Council) *Accession Number: 1997/40*

A set of panels for the Stockbridge Redevelopment Exhibition, prepared by Ian Begg in 1963 as a student project. The panels are illustrated with black and white photographs of Stockbridge taken by local residents, with whom he worked on the project, as well as drawings illustrating the perceived benefits of clearing buildings to provide landscaped areas within the townscape. (Presented by Ian Begg, Architect, to the RIAS Collection) *Accession Number: 1997/5*

Three photographic views of a newly repaired bridge, designed by Naysmith, over the River Almond and a view of Illieston, Kirkliston Parish, taken April 1997. (Presented by Ian Fleming, ex RCAHMS) *Accession Number: 1997/52*

Five photocopies of drawings produced by Simpson & Brown Architects for the adaptation of 26–31 Charlotte Square, Edinburgh, for use by the National Trust for Scotland as their headquarters, January 1997. (Presented by C H Cruft in June 1997) *Accession Number: 1997/53*

Perspective sketch of the interior of Greyfriars Kirk, Edinburgh, by Henry Kerr, Architect to the Kirk, 1934. (Purchased) *Accession Number: 1997/98*

RCAHMS

FIFE

Mounted 19th-century photographic view of an unidentified Fife farmhouse. Photographed by 'Gordon Cupar' and inscribed (verso) 'Lizzie Wallace'. (Purchased) *Accession Number: 1997/44*

GLASGOW CITY

A photograph album which records Wallace Scott & Co Ltd Tailoring Institute, Cathcart, as newly constructed to the design of John Burnet Son & Dick, 1913-22. Interior views illustrate the emphasis placed on workers' welfare. Staff enjoyed the benefits of recreation grounds for summer tennis, croquet and bowls, rest rooms for 'quiet reflection', a sick room, bathrooms, a dining-hall and a 'kinematograph' where 'films of an educational and historical character are displayed on special occasions.' Although the photographs are in black and white, an accompanying leaflet describes the use of different colour schemes in the workrooms in order to produce a calming effect on the workforce whose overalls were in 'a green colour to match the shade of the walls, so that the whole atmosphere of the rooms is pleasing.' (Purchased) *Accession Number: 1997/37*

HIGHLAND

Survey of a Private Collection comprising a set of client's drawings relating to Fairburn House, Wardrop & Reid, 1876-9. (Lent for copying by Mr and Mrs Davidson) *Accession Number: 1997/23*

NORTH LANARKSHIRE

Photograph album with 73 colour views of Carluke Mill comprising a 1990 survey of the interior by The Alexander Kerr Practice, Chartered Architects, Commercial Bank Chambers, 5a Stewarton Street, Wishaw ML2 8AA. (Presented by the Alexander Kerr Practice) *Accession Number: 1997/3*

SCOTTISH BORDERS

Survey of a Private Collection of photographic prints by Thomas Hannan. Many of the views were prepared for his publication 'Famous Scottish houses: the Lowlands', 1928, and include Minton House, Borders; Wemyss Castle, Fife; Winton House, East Lothian; and Inch House. Other illustrations were prepared for 'To Mark the Fleeting Hour', an unsourced article, and 'Gruyères and its Chateau'. (Lent for copying by Dr Nigel Malcolm-Smith, Hannan's grandson.) *Accession Number: 1997/11*

Prints of two watercolour strip elevations of Melrose High Street and Market Square at 1:200 scale by W G Highet, 1996. (Presented by Bill Highet) *Accession Number: 1997/97*

SOUTH AYRSHIRE

A set of nine photographs relating to buildings in Ayr including an interior view of Old County Buildings, Wellington Square, two construction views of a building in Wellington Square, a view of the Old Fort, and two views of the demolition of the Old Prison, a photocopy of a drawing of the Esplanade and a photocopy of a photograph of the Old Prison. (Presented by Sheena Andrew, Carnegie Library, Ayr) *Accession Number: 1997/13*

MISCELLANEOUS

A research file compiled by Basil Skinner inscribed: 'William Adam, Sir John Clerk, The Country Seat etc.' which includes press cuttings from The Scottish Local History Congress, 1969; a transcript of a lecture he gave in 1980 to the Scottish Georgian Society, 'The Country Seat and Vitruvius Scotticus Hopetoun as the House of State'; a transcript of a lecture by James Simpson, 'The Clerks and the Patronage of Architecture'; notes taken from a series of lectures given by Alistair Rowan, 'A Kind of Revolution'; a copy of James Simpson's thesis on William Adam and a photocopy of 'The Country Seat'. (Purchased) *Accession Number: 1997/100*

242-252 Sauchiehall Street, Glasgow; two surveys by David Walker; two dyelines of a design for a proposed hotel at 197-207 Ingram Street, Glasgow, Eason and Jardine, 1969; 1947 dyeline of a survey of the spire at 147 St Vincent Street (James Salmond?); dyelines of a set of twelve designs for the SSC Library, Edinburgh, by James B Dunn, 1888; and a design for St Luke's Episcopal Church, Downfield, Nelson T Stewart, 1933. (Presented by Professor D M Walker) *Accession Number: 1997/101*

A miscellaneous collection of architects' papers: from Alfred G Lochhead, a design for Gourock Free Church, Charles Wilson, 1855; a photograph album recording memorial panels produced for Lorimer's office (some annotated with dimensions and identifying the carvers); a series of plans for wartime requisition of Castle Toward, Argyllshire and Ardmore House, Culross; dyeline of a fabric design by C F A Voysey; sketch design for a table (Lorimer); 'Sketch of Details of Shrine SNWM' from the Lorimer office; letter from John Matthew for Sir Robert Lorimer, Architect, to A Lochhead, 28th August 1923; note to Lochhead from John Matthew, 11th February 1926, regarding overseas war memorial designed by Lorimer; a set of six photographs of carved panels by M Meredith Williams for St John's, Perth; design for the Dirlerton War Memorial, Robert Lorimer, 1920; six designs for unidentified memorials; design for the Clackmannan War Memorial, Robert Lorimer, 1921; design for Melrose War Memorial, Robert Lorimer, 1920; design for Dingwall Cross Memorial; design for Currie War Memorial, Lorimer, 1920; design for St Andrews War Memorial, 1921; design showing Loretto and 'probably Whittingham' memorials (Lorimer); design for Pencaitland War Memorial (Lorimer); design for Stenton War Memorial (Lorimer); design for a metal gate (Lorimer); design for Galston War Memorial, Lorimer, 1922; 'Cancelled' design (SNWM), 1922; design for Strathblane War Memorial (Lorimer); design for a fireplace (Lochhead). Other miscellaneous material comprises an Office of Works file regarding the redecoration and redisplay of the State Apartments of Holyrood Palace in 1935, including five photographic reproductions of surveys by J Houston of the original decoration of Culross Palace; from the office of McLaren Soutar & Salmond two drawings comprising a design for a double villa, Brechin Road, Kirriemuir, Charles Soutar, 1906; dyeline copy of a design for proposed additions to a warehouse. (Presented by Professor D M Walker) *Accession Number: 1997/101*

Three topographical engravings published by F Blyth, 1777: Mount Stewart (sic) by Moses Griffith, engraved by J Ellis; Dumbarton Castle by Paul Sandby, engraved by Godfrey; and a view of Edinburgh Castle with North Bridge by Moses Griffith, engraved by Godfrey. (Presented by Ronnie Robertson) *Accession Number: 1999/102*

Dr E M Patterson Collection. A collection of material relating to the interests of Dr Edward Patterson, research chemist, geologist,

transport historian and archaeologist. The bulk of the material relates to blackpowder production but the collection reflects his wider interests in industrial archaeology. Extracts include one on gunpowder from 'Text Book of Explosives used in the service', 1938; one on blackpowder hydraulic cake presses from 'The Manufacture of explosives', 1895; and several on gunpowder and blackpowder from 'Transcript on memories of an Ardeer worker', from the 1930s. Files on various subjects include explosives manufacture in Scotland during WW2; incorporating mills; Tourgill Earthworks; and a further annotated draft of the published Gunpowder Vocabulary. Photographic material includes an envelope containing photographs and negatives of gasworks; copies of views of gunpowder manufacture at Faversham, 1798; and a box of photographs of blackpowder works at Ardeer, Wigtown and Furnace. (Presented by Mrs Anna Singer per Miles Oglethorpe, RCAHMS) *Accession Number: 1997/119*

Graham Law's thesis 'Alexander ('Greek') Thomson I A, a short account of his life and works', 1950, an early and ground-breaking analysis of Thomson's work illustrated with photographic copies of drawings and contemporary views of Thomson's buildings, some of which have since been demolished. Law went on to be a partner in the Edinburgh practice Law & Dunbar-Nasmith. (Presented by Gavin Stamp) *Accession Number: 1997/12*

A collection of architectural books and pamphlets from the office of Kathleen Veitch, Architect (see also Acc. No: 1996/53), including a sketchbook from her RIBA Owen Jones Travelling Scholarship trip to southern Spain in 1930. (Purchased) *Accession Number: 1997/17*

Four 19th-century photographs: A Moffat's painting and decorating shop; Sycamore House, 'North Cotes'; Queen Victoria opening a reservoir, probably in Fife; and a view of 6 Picardy Place, Edinburgh, decorated for a Royal visit. (Presented by Laurance Black) *Accession Number: 1997/19*

A presentation volume of photographs by Bedford Lemere of 'The City Chambers, Glasgow' on completion c 1890. Also, an ornate little manuscript album 'Views in Edinburgh' produced by J T Mayne for 'Mrs Bartley' in the mid-19th century. The illuminated frontispiece shows the Rectory at Stocking-Pellham, presumably in connection with the artist or recipient, while the album itself includes interior views of St John's, Princes Street, and St Columba's. (Purchased) *Accession Number: 1997/20*

Fifteen 19th-century stereoscopic views which include Stirling Castle, the interior and exterior of unidentified glasshouses and Hamilton Mausoleum. (Purchased) *Accession Number: 1997/21*

A copy of 'A Tint Book of Historical Colours suitable for Decorative Work', Thomas Parsons & Sons Ltd, 1961. This sample catalogue of paints considered appropriate for use on historic buildings is divided into periods e.g. 'Wedgwood Colours'. The Scottish Georgian Society had requested advice on Georgian colours for use in Edinburgh's New Town and a colour chart of suggestions with the firm's reply is enclosed addressed to Eleanor Robertson, Honorary Secretary of the Society, 1962. (Presented by Eleanor Robertson) *Accession Number: 1997/22*

Catalogue for 'Heggie & Aitchison Shop Fitters, 47 Grove Street, Edinburgh' c 1905. Illustrated with views of shops fitted out by the firm and details of fittings supplied such as lamps, 'the reliable shop assistant's seat', wax dummies, boot stands, etc. (Purchased) *Accession Number: 1997/25*

Further material relating to the work of H F Clark, landscape architect and educator (see also MS/758). A box of slides largely prepared for lecturing purposes on subjects such as land use, city development, landscape architecture and architectural history. In four formats, the slides date from the 1950s and 1960s. (Presented by John Lowrey, University of Edinburgh Architecture Department) *Accession Number: 1997/28*

Two negatives, taken by Edinburgh University Library Photographic Department in 1963, of a linen damask napkin showing Scottish buildings which were identified at that time by Kitty Cruft. (Presented by Margaret Swain) *Accession Number: 1997/29*

Survey of a Private Collection of 20 drawings and photographs relating to work by Gillespie Kidd & Coia held in the Scottish Catholic Archives. Projects include Darleith House; St Peter's, Kilmahew; and the Kilmahew Estate, Cardross. (Lent for copying by Scottish Catholic Archives per Diane Watters, NMRS) *Accession Number: 1997/30*

Survey of a Private Collection of photographs relating to the work of Gillespie Kidd & Coia. Projects include: St Peter's College, Cardross; Cumbernauld Housing; St Bride's, East Kilbride; St Paul's, Glenrothes; St Mary's, Bo'ness; Robinson College, Cambridge; St Lawrence's, Greenock; St Mary in Chains, Ardrossan; Patrick's, Kilsyth; Notre Dame College, Bearsden; St Columbkille's, Rutherglen; and St Patrick's, Greenock; as well as a set of working drawings for St Peter's College, Cardross. (Lent for copying by Professor Isi Metzstein per Diane Watters, NMRS) *Accession Number: 1997/31*

Survey of a Private Collection of material relating to Gillespie Kidd & Coia. Projects photographed include St Peter's, Bearsden; St Peter's, Rome; St Peter's, Cardross, under construction; St Peter's, Cardross, in use; the Archbishop and Bishops outside St Peter's, Cardross c 1974; and the library of St Peter's, Bearsden. Pages were copied from an album containing newscuttings about the move of the College from St Peter's, Cardross, to Newlands. (Lent for copying by Scotus College per Diane Watters, NMRS) *Accession Number: 1997/32*

A copy of James K Gillon's thesis on Sir James Gowans, Architect, prepared for the RICS Diploma in Building Conservation at The College of Estate Management, 1995-96. Included are 28 strips of colour negatives for the views of Gowans's buildings which illustrate the thesis. (Presented by James Gillon) *Accession Number: 1997/34*

Papers from the office of W Schomberg Scott, Architect, which are additional to the office drawings already deposited with the NMRS. Principally comprises photographs, negatives and slides taken and collected by Schomberg Scott. Also includes a roll of drawings, mostly miscellaneous projects for the National Trust for Scotland, and full-size details for furnishings for Monteviot and Falkland Palace; wallpaper samples; bills of quantity for Monteviot. Among the manuscript material are draft guide books (including Crathes, Leith Hall and Culzean), lectures and tour notes for summer schools which illustrate the depth of his commitment to the activities and aims of the National Trust for Scotland from the mid-1960s onwards. His writings reflect his passion for 16th and 17th-century Scottish architecture and his efforts to gain recognition for the involvement of Scottish craftsmen at this period, particularly for interior decorative work, at a time when foreign craftsmen were generally thought to have been widely active in Scotland. A small collection of sketches and photographs dates from the late 1940s when Schomberg Scott photographed examples of Reginald Fairlie's work for Patrick

RCAHMS

Nuttgens' 1959 biography – office writing paper has been used to sketch Beaufort Castle, Beaulieu, and several Catholic churches including Fort William, Troon and Roy Bridge, with instructions as to views required. (Deposited by Anthony Dixon on behalf of Schomberg Scott) *Accession Number: 1997/39*

The office papers of Henry Wylie, Architect and Designer (1914–96). Wylie trained as an architect but had a particular interest in design; in the late 1950s he set up DISC (Design Industrial Styling Consultants). The collection includes records relating to this firm as well as to his later work in private practice. His architectural work included designs for shop fronts, such as Justerini & Brooks and the Stella Nova in Edinburgh and, his major Scottish project, the extension of the George Hotel, Edinburgh. The collection includes office drawings, photographs and files. The NMRS recorded the interior of Wylie's home and office at 15 Moray Place which he had re-cast in the 1970s. (Presented by Harriet Wylie, Henry Wylie's daughter, to the RIAS Collection) *Accession Number: 1997/4*

A set of proofs, bound in two volumes, for the 'Baronial and Ecclesiastical Antiquities of Scotland', R W Billings, 1852. The introduction and list of plates have been bound in with the proof plates but otherwise there is no accompanying text. It is unclear which stage in the process this remarkable survival represents but minor compositional variants and the omission of elements of detail suggest that this is an early proof set. There is perhaps a connection with one of the engravers, James Redaway, who is identified on eight of the otherwise anonymous plates. (Purchased) *Accession Number: 1997/41*

Two illustrated trade catalogues of 'Cast Iron Manufactures' produced by the Lion Foundry Company Ltd, Kirkintilloch. Two editions of volume 1, the 4th and greatly expanded 5th edition illustrate architectural, sanitary and structural goods. (Purchased) *Accession Number: 1997/42*

Two sketchbooks inscribed 'Rutland Prize 1931 1932' which were compiled by Tom Arnold Jeffryes during his RIAS Scholarship trip to London. The books contain letters of introduction and correspondence regarding access to buildings he wished to sketch as well as an identity card issued by the RIBA confirming that he was 'travelling for the purposes of architectural study'. The focus of the scholarship was commercial structures: Jeffryes' chosen subjects included the Dorchester Hotel, Crawfords at High Holborn and the Saville Theatre but, having completed the requirements of the prize, he also visited the V & A to sketch furniture and studied the dome of St Paul's Cathedral. (See also *Acc. Nos: 1996/33 and 1997/52.*) (Purchased) *Accession Number: 1997/43*

Two trade catalogues: 'Signet Combined Range and Sitting Room Grates, Gillespie & Main', Fireplace Specialists, Callendar Riggs, Falkirk, c 1920 and 'Illustrated Catalogue of Architectural Ironwork, Alloa Iron Co.', c 1900. Also, a colour postcard view of the dining-room at Darling's Regent Hotel, 20 Waterloo Place, Edinburgh c 1909; a 1909 reprint of 'Memories of Sir Walter Scott', James Skene, extra-illustrated with a set of the original engravings; and 'The Statue of Mrs John Elder, Govan' a privately printed commemorative volume of 1912. (Purchased) *Accession Number: 1997/45*

A postcard album compiled in the early 1900s. Many of the largely coloured views are of west of Scotland subjects including Rothesay, the Trossachs Hotel, Luss and Oban. Inverness and Crieff are also included. (Purchased) *Accession Number: 1997/46*

Material relating to the work of Sir Anthony Wheeler, Wheeler & Sproson, Architects; a dyeline copy of a layout plan for Dysart Redevelopment Phase III and various items relating to the redevelopment of MacDonald's Buildings, Culross. (Presented by Sir Anthony Wheeler per Diane Watters, NMRS) *Accession Number: 1997/48*

A photograph album titled 'The Honeymoon Tour in Scotland Sept. 23rd to Oct. 5th 1929' which records a caravan tour of Scotland beginning in Edinburgh and travelling through Loch Lomond, The Trossachs, Callander, Inversnaid and Loch Katrine. (Presented by Joanna Close-Brooks) *Accession Number: 1997/50*

Twelve volumes from the working library of John Reid Napier who worked in Dundee City Engineers Department in the 1950s before moving to Fife County Council. The volumes relate to building construction and decoration and include some books acquired when he was a student. A sketchbook contains photographic copies of drawings prepared for Fife County Council by M E Taylor, the County Planning Officer in the 1940s. The collection also includes a catalogue for Callendar Brick & Fireclay Co. Ltd and 'A Tint Book of Historical Colours', Thos. Parsons & Sons Ltd, 1934. (Purchased) *Accession Number: 1997/54*

Further material relating to the work of Sir H Anthony Wheeler, Architect: photographic copies of a design for an Architect's House, Kirkcaldy, 1960; a measured drawing made in Paris when on a student scholarship from Glasgow School of Architecture, 1939; ten Christmas cards produced using his watercolour views of buildings including Dunkeld Cathedral and Taymouth; and a set of colour prints created from watercolours of Glasgow, Aberdeen, Edinburgh and St Andrew's Universities that Sir Anthony was commissioned to produce by the universities in 1992. *Accession Number: 1997/55*

A unique album of caricatures of Office of Works staff which is dedicated 'to the 'Drawing Office' with best wishes Garnett Farmer May 1923'. Farmer's career also included some time with Lutyens as his assistant but he clearly spent long enough in Scotland with the Office of Works to produce this acutely, and affectionately, observed portrait of its staff from the secretaries and boy from Malloch to drawing officers and senior staff. A few of the caricatures are given contexts including a couple showing work in the field and many are named including Sym, Murdoch and J W Paterson. (Purchased) *Accession Number: 1997/56*

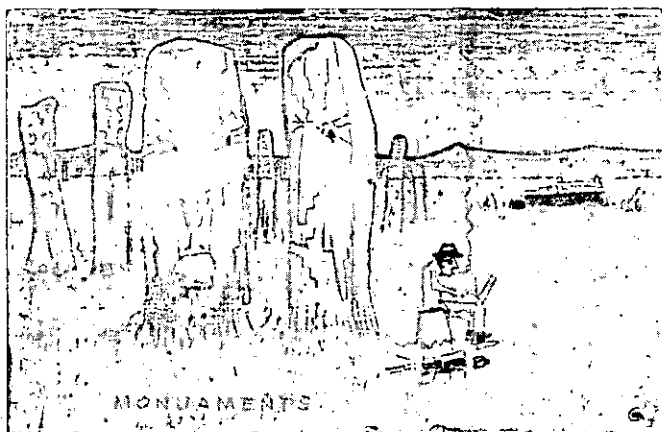


Fig 35 National Monuments Record of Scotland. A member of Office of Works staff in the field. From a volume of caricatures prepared by Garnett Farmer c 1920. (D15039)

A 'Scrap Album' with early photographic views, c 1870, of bridges over the Fall of Moness; Taymouth Castle; the Old House of Auchmore; Menzies Castle; Meggernie Castle; Garth Castle; Chesthill House; Eonan Cottage; a newly constructed house at Loch Kennard; Fortingall Hotel; Grandtully Castle; Logierait Free Church; Kenmore; The Dochart, Killin; Aberfeldy; Killiecrankie viaduct; Stonehaven; Dunottar Castle; and Muchalls Castle. (Purchased) *Accession Number: 1997/57*

Eight large modern colour photographic views of the interior and exterior of Earlshall, Leuchars. The photographs are mounted on card and are of high quality. Also, an 1860s photographic view of Calderwood Castle, East Kilbride, inscribed (verso) 'Mr Smith, Bruntfield House' and a view of an unidentified Scottish house. (Presented by The Biggar Museum Trust) *Accession Number: 1997/6*

A collection of dyeline copy drawings and photographic prints from the office of Wheeler & Sproson, Architects, Edinburgh, which relate to Sir Anthony Wheeler's projects. Designs include alterations to Heriot Watt University, Edinburgh; the Bank of Scotland in Dunfermline; a church at Langlee, Galashiels; and the Low Port Centre, Linlithgow. (Presented by Sir Anthony Wheeler, Wheeler & Sproson per Diane Watters, NMRS) *Accession Number: 1997/7*



Fig 36 National Monuments Record of Scotland. House for Mr Whiteford, Dollar, by Sir H A Wheeler, Wheeler and Sproson, Architects, c 1970. (D15048)

Further material relating to Alexander Hunter Crawford, Architect (see also *Acc. No: 1993/34*). A box of lantern slides inscribed 'Suburban Villa' was apparently compiled for lecturing purposes. The slides include interior and exterior views of houses as well as copies of architectural drawings; some are Crawford's designs, the rest include designs by contemporaries such as Voysey, Mervin Macartney and E J May. Also included is a 1935

drawing by Crawford which relates to the family business, William Crawford & Sons Ltd, and illustrates their biscuit works in Leith and a photocopy of autobiographical notes written by the architect on his office writing paper after 1910. (Presented by Mr Petrie, Crawford's grandson.) *Accession Number: 1997/8*

Further material relating to the work and interests of Ken Melvin, a local government architect in Renfrewshire in the 1970s and 1980s (see *Acc. No: 1995/41*): a photographic study of Newton Mearns c 1880–1930 comprising copy photographs of early views mounted on card (the negatives retained by Mr Melvin); miscellaneous reports including a condition report on Castle Levan, Gourrock, 1970, by Alexander Farquhar and one on the Wallace Buildings, Elderslie, 1969, by the county architect and, on behalf of David S Paterson, formerly an architect in Glasgow and senior lecturer at the University of Strathclyde, a collection of slides of buildings in England, Scotland and Europe dating from 1940s–60s. (Ken Melvin's material is deposited by him. David Paterson's is gifted) *Accession Number: 1997/9*

Schomberg Scott material transferred from his office to Northfield House on his retirement, possibly representing jobs he was still working on at that time. The drawings join the existing NMRS Schomberg Scott Collection. Projects include Dupplin Castle and Monteviot. (Deposited by Anthony Dixon, Schomberg Scott's former partner.) *Accession Number: 1997/99*

GENERAL

The surviving office papers of Miss Kathleen Veitch, Architect, who practised in the Borders until the late 1960s. The collection relates principally to her 1930 Owen Jones Scholarship entry drawings and subsequent trip to Spain. Also includes drawings relating to houses designed by Miss Veitch for her sister and herself; photographs of her, including one as an apprentice in a London architects' office in 1935; letters; a sketchbook; drawing instruments and memorabilia. (Presented by Miss E L Carrick) *Accession Number: 1996/53*

James Henderson's *Commonplace Book*. A unique and charming record of the varied activities of this early 19th-century ship and house-painter and amateur artist, complete with topographical views. (Deposited by Trevor Cowie) *Accession Number: 1996/54*

Gas Historical Society of Scotland material comprising thirteen drawings including a plan of Govan Gas Works, 1907; two plans of East Dock Street Gas Works, Dundee, 1938; and a plan of Dalkeith Works c 1948. (Bob Winn, Gas Historical Society of Scotland) *Accession Number: 1996/55*

A LIST OF HISTORIC SCOTLAND ARCHAEOLOGICAL RADIOCARBON DATES

Compiled by P J Ashmore

Introduction

This list of dates received by Historic Scotland mostly between 1 July 1996 and 3 June 1997 for archaeological sites and objects represents the work of many individuals. Most often sites have not yet been published, and it is important, if you wish to quote these dates, to cite the author of the information produced here. For instance, the first entry in this list should be cited as Rideout J S 1997 'East Campsie, Kirriemuir' *DES* 1997, 112. If this convention is often flouted Historic Scotland may decide not to promulgate dates for at least 18 months after they have been obtained.

Entries which other people or organisations wish to see included in future lists should be sent to the compiler, P J Ashmore, 20 Brighton Place, Portobello, Edinburgh EH15 1LJ before 31 October 1998.

Code	Context	Material	Date BP	Err	d13C
ANGUS					
East Campsie, Kirriemuir (NO 288 527), Rideout J S					
AA-23258	Skeleton of a child aged about 12 years in a cist.	bone human	3295	50	-21.3
Mains of Melgund, Aberlemno (NO 536 563), Rideout J S					
AA-23259	Skeleton of a male, aged about 30 years, found with a child skeleton in a cist.	bone human	3405	55	-21.2
AA-23260	Skeleton of a child between 7-9 years, found with the skeleton of an adult male in a cist.	bone human	3500	50	-21.0
West Scryne, Carnoustie (NO 576 365) Rideout J S					
AA-23261	The skeleton of a male in his 20s in a cist.	bone human	3300	50	-21.2
ARGYLL AND BUTE					
Bolsay Farm, Port Charlotte (NR 2253 5736), Mithen S J					
AA-21631	Willow from what is believed to be an undisturbed <i>in situ</i> occupation horizon of the Mesolithic settlement.	charcoal	4740	50	-27.9
AA-21632	Hazel. See AA-21631.	charcoal	7400	55	-24.3
AA-21633	Alder. See AA-21631.	charcoal	6810	55	-26.2
AA-21634	Willow from an extensive context above the natural and/or an <i>in situ</i> occupation deposit.	charcoal	4460	50	-26.9
AA-21635	Birch. See AA-21634.	charcoal	4290	45	-27.6
AA-21636	Alder. See AA-21634.	charcoal	3930	45	-26.2
AA-21637	Oak. See AA-21634.	charcoal	4200	55	-27.6
AA-21638	Alder. See AA-21634.	charcoal	4640	55	-30.1
Staosnaig, Scalasaig (NR 3977 9331), Mithen S J					
AA-21618	Cereal grains from a 4m diameter shallow pit. A considerable amount of organic material remained in the fill which appears to have been uncarbonised hazelnut shells.	cereal grain	3455	60	-27.0
AA-21619	Hazel. See AA-21618.	hazelnut shell	7760	55	-24.8
AA-21620	Hazel. See AA-21618.	hazelnut shell	7040	55	-25.5
AA-21621	Hazel. See AA-21618.	hazelnut shell	7780	55	-25.6
AA-21622	Hazel. See AA-21618.	hazelnut shell	7660	55	-25.7
AA-21623	Hazel. See AA-21618.	hazelnut shell	7665	55	-27.6
AA-21624	Hazel. See AA-21618.	hazelnut shell	7935	55	-25.1
AA-21625	Hazel from a stone-lined boat-shaped pit, 2m from the large circular pit (AA-21618-24). See also AA-21626.	hazelnut shell	7780	55	-25.5
AA-21626	Hazel from a secondary fill of the stone-lined boat-shaped pit (AA-21625).	hazelnut shell	7480	55	-26.6
AA-21627	Hazel from a small pit, c 0.98 x 0.7m and c 0.3m deep.	hazelnut shell	8110	60	-25.1
AA-21628	Hazel from a shallow, sub-rounded pit c 70cm in diameter, probably a hearth.	wood charcoal	1760	40	-26.4
AA-21629	Hazel from an amorphous feature measuring c 2 x 1.1m, purposefully partially filled with pebbles.	hazelnut shell	5415	60	-23.4
AA-21630	Hazel from a deposit of burnt sand, artefacts and charcoal fragments towards the base of a large (c 0.45m ³) stone-lined pit.	wood charcoal	3395	60	-26.6
CLACKMANNANSHIRE					
Braehead, Alloa (NS 8693 9370), Ashmore P J and Hall D					
GU-4835	Scallop shells from a midden of oyster and other shells which may have slumped from a higher position.	scallop	5880	60	0.9
DUMFRIES AND GALLOWAY					
Woodend Farm, Johnstonebridge (NY 1053 9576), Banks I					
AA-24949	Barley from the slot trench of a house wall from a set of house complexes in a large enclosure.	cereal grain	1865	45	-23.1
AA-24950	Alder Pomoideae and hazel from the fill of the slot trench of a house wall on the E side of the enclosure.	charcoal	1740	40	-27.1
AA-24951	Alder from the fill of the packing of a post-hole of a house.	charcoal	1840	40	-27.1
AA-24952	Barley from the fill of the slot trench of a house wall, the latest structure in the local sequence.	charcoal	1935	40	-22.7

RADIOCARBON DATES

Woodend Farm, Johnstonebridge (NY 1053 9576), Banks I (cont.)

AA-24953	Alder in the fill of the slot of the latest of the structures on site.	charcoal	1825	40	-26.0
AA-24954	Charred material from the fill of one of a pair of structures on the NE of site.	charcoal	2175	45	-26.0
AA-24955	Hazel from slot trench of a house on the N side of the enclosure.	charcoal	1825	45	-25.7

EAST LOTHIAN

Fisher's Road East, Port Seton (NT 4092 7540), Haselgrove C

AA-25715	Barley in the fill of gully which held a fence or wind break.	barley grain	1960	45	-25.5
AA-25716	Barley in the fill of a post-hole which is part of a rectangular structure.	barley grain	1920	45	-23.6
AA-25717	Barley in the fill of a post-hole which is part of fence or wind break.	barley grain	1950	45	-24.9
AA-25718	Barley in the post-demolition fill of the N entrance post of a circular structure in the W part of enclosure 1, with its entrance aligned exactly with the enclosure.	barley grain	1810	45	-23.1
AA-25719	Spelt glumes from the fill of a ditch, representing material containing crop-processing debris which was tipped into the open, partly filled ditch. See also AA-25720.	charred cereal	1905	45	-24.1
AA-25720	Emmer glumes. See AA-25719.	charred cereal	1840	45	-25.8
AA-25721	Heather twigs (not derived from burnt peat) from the early secondary filling of an early ditch.	charred plant remains	2015	45	-25.4
AA-25722	Pondweed seeds from the lower fill of a ditch.	waterlogged seeds	1845	55	-24.3
AA-25723	Barley from the fill of a ditch, representing material indicative of barley processing which was tipped into the ditch prior to levelling of the latter.	barley grain	1825	50	-21.8
AA-25724	Anomalous early date from charred barley grain.	barley grain	23680	230	-23.6
AA-25725	Naked barley from the uppermost fill of the inner ditch of enclosure 1. See also AA-25726.	barley grain	1215	45	-25
AA-25726	Hulled barley. See AA-25725.	barley grain	1785	55	-24.1
AA-25727	Barley from crop-processing waste in the primary silting of the outer ditch of enclosure 1.	barley grain	1610	45	-23.2
AA-25728	Cereals from the demolition fill of a ring gully forming the outer wall of a circular building at the centre of enclosure 3.	barley grain	1985	45	-24.2
AA-25729	Barley from refuse including fresh crop-processing debris directly on top of cobbles forming the floor of an oval sunken-floored building with a timber wall under a deposit containing much animal bone.	barley grain	1875	60	-23.2
AA-25730	Water crowfoot seeds from the lower fill of a ditch.	waterlogged seeds	2590	45	-22.2
AA-25731	Water crowfoot seeds from the lower fill of a ditch.	waterlogged plant remains	1975	45	-25.8
AA-25732	Barley from the primary fill of an early ditch.	barley grain	265	50	-26.0
AA-25733	Seeds from the post-removal fill of a post-hole forming part of the entrance of a circular structure.	barley grain	1960	45	-24.9
AA-25734	Heather twigs (not from peat) from the ring gully of a circular structure.	charred plant remain	1895	45	-29.4
AA-25735	Cereals from the post-demolition fill of a post-hole which is part of a post ring 6m in diameter of a circular structure, concentric with a ring gully.	barley grain	125	45	-23.9
AA-25736	Barley from the primary fill of a ditch.	barley grain	2000	55	-23.2
AA-25737	Barley from the first of a series of dumps of occupation refuse in a partly infilled ditch. See also AA-25738.	barley grain	1880	45	-23.5
AA-25738	Barley from the upper part of the butt end of a ditch. See also AA-25737.	barley grain	1870	45	-24.3

Fisher's Road West, Port Seton (NT 406 752), McCullagh R P J

AA-26224	Barley from a dense concentration of cereal grain derived from on site domestic or crop-processing activity, from a shallow oval pit near structure 1.	cereal grain	1905	55	-25.6
AA-25713	Uncarbonised seeds of henbane from the lowest fill of phase 4 of the ditch.	uncarbonised seeds	1985	45	-26.4
AA-25714	Grape pip from a truncated, irregular-shaped pit close to the entrance of the phase 3 ditch.	<i>vitis vinifera</i>	modern		-22.3

FIFE

Fife Ness (NO 6365 0950), Dalland M

AA-25215	Hazel from an isolated pit which lies 3m SW of the shelter. The pit is oval, 0.98 x 0.90m and 0.36m deep.	hazelnut shells	8490	60	-24.7
AA-25214	As AA-25215.	hazelnut shells	8510	65	-23.2
AA-25213	Hazel from the lower fill of the pit whose upper fill is dated by AA-25215 and AA-25214.	hazelnut shells	8495	65	-25.2
AA-25212	As AA-25213.	hazelnut shells	8545	65	-22.9
AA-25211	Hazel from an area of dark soil, 2.5 x 3m, which covered most of the cuts associated with the Mesolithic shelter and was interpreted as the remains of the occupation layer.	hazelnut shells	8460	85	-25.7
AA-25210	As AA-25211.	hazelnut shells	8410	60	-21.8
AA-25209	Hazel from a post-hole which probably belonged to the wind break structure.	hazelnut shells	8475	75	-26.8
AA-25208	As AA-25209.	hazelnut shells	8510	70	-23.6
AA-25207	Hazel from one of seven post-holes in the curving line belonging to the wind break structure. See also AA-25203 and AA-25202.	hazelnut shells	8420	65	-24.2
AA-25206	As AA-25207.	hazelnut shells	8355	60	-23.6

RADIOCARBON DATES

Fife Ness (NO 6365 0950), Dalland M (cont.)

AA-25205	Hazel from a post-hole outside and to the SE of the curving line of post-holes interpreted to be part of a wind break structure.	hazelnut shells	8405	60	-24.9
AA-25204	As AA-25205.	hazelnut shells	8505	75	-23.5
AA-25203	Hazel from one of seven post-holes in the curving line belonging to the wind break structure. See also AA-25207 and AA-25206.	hazelnut shells	8340	60	-24.5
AA-25202	As AA-25203.	hazelnut shells	8275	65	-26.4

St Adrian's Priory, Isle of May (NT 6585 9901), James H F

GU-4962	Male (young adult) skeleton within N range (church).	bone human	570	50	-20.0
GU-4963	Male (mature adult) skeleton within church, partially disturbed by building of a furnace.	bone human	710	80	-19.9
GU-4964	Male (young adult) skeleton beneath E end of N range (church) within the burial cairn.	bone human	970	70	-20.3
GU-4965	Skull only in the top of the burial cairn of rounded stones, disturbed and crushed by building of S wall of an early church.	bone human	1160	70	-21.4
GU-4966	Male (middle adult) skeleton beneath chapter house of priory within cairn of rounded stones, uncisted.	bone human	1280	50	-21.5
GU-4967	Male (middle adult) skeleton. The uppermost articulated burial within a long cist which contained bones of at least five other individuals. See GU-4968 for the primary burial.	bone human	1260	50	-22.8
GU-4968	Possible female (middle adult) skeleton. The primary (lowest) burial within a long cist which contained bones of at least five individuals. See GU-4967 for the uppermost burial.	bone human	1180	60	-22.0
GU-4969	Female (middle adult) skeleton within a cist and covered by a large grave marker.	bone human	820	50	-21.7
GU-4970	Male (middle adult) skeleton within a dug grave near to the church.	bone human	940	70	-20.8
GU-4971	Middle adult skeleton, upper half only remained, northernmost excavated burial in cemetery.	bone human	370	50	-19.7
GU-4972	Male (middle adult) skeleton.	bone human	770	60	-19.7
GU-4973	Male (young adult) skeleton beneath the cloister of the priory.	bone human	960	60	-19.0

GLASGOW CITY

Glasgow Cathedral (NS 6050 6555), Driscoll S T

GU-4746	Burial (oriented E-W) cut by the W front of the earliest cathedral dedicated 1126. The burial may be part of an early plan cemetery.	bone human	1250	60	-22.7
GU-4747	Burial in a context which could pre-date all the cathedrals, cut by the foundation for the second cathedral (late 12th century).	bone human	820	50	-22.6

HIGHLAND

Balnaruan of Clava, Inverness (NH 7575 4445), Bradley R J

AA-25237	Pomoideae from a small concentration of charcoal within the lower filling of the socket for one of the kerbstones beside the entrance of the NE passage grave.	charcoal	2945	50	-28.7
AA-25236	Hazel. See AA-25237.	charcoal	3145	55	-24.7
AA-25235	Hazel. See AA-25237.	charcoal	3600	50	-26.1
AA-25234	Hazel. The sample is one of two (S.4 and 5) taken from the surface of the old land surface buried beneath the core cairn. See also AA-25233.	charcoal	3475	45	-25.5
AA-25233	As AA-25234.	charcoal	3530	45	-26.3
AA-25232	Hazel from one of three samples taken from what are probably redeposited turves in the core of the NE cairn inside the kerb of the cairn. See also AA-25231 and AA-25230.	charcoal	3595	60	-26.9
AA-25231	As AA-25232 and AA-25230.	charcoal	3535	45	-25.7
AA-25230	As AA-25231 and AA-25232. This date must be from material at least 2000 years earlier than the turves.	charcoal	5535	55	-26.6
AA-25229	Hazel from the surface of the old land surface beneath the core of a previously unrecognised ring cairn on the edge of the Balnaruan of Clava cemetery. See also AA-25228.	charcoal	2420	45	-26.5
AA-25228	As AA-25229.	charcoal	2770	45	-26.4
AA-25227	Alder from the surface of the old land surface sealed beneath a secondary extension to a previously unrecognised ring cairn on the edge of the Balnaruan of Clava cemetery. See also AA-25226.	charcoal	2745	45	-25.0
AA-25226	Hazel. As AA-25227.	charcoal	2680	45	-25.7

Lairg watching brief, Lairg (NC 5820 0107), McCullagh R P J

AA-26223	Oak from a 'buried soil' underlying a soil bank enclosing a cremation cemetery.	charcoal	3150	70	-25.3
GU-7272	Oak from the fill of isolated bipartite pit with non-metallic waste indicating a possible industrial use.	charcoal	2780	100	-27.2
GU-7273	Birch, hazel and alder charcoal in a dense concentration believed to represent pyre debris, from the fill of a pit containing an urned cremation within an enclosed cremation cemetery.	charcoal	3000	60	-27.0
AA-26222	Hazel charcoal interpreted as the remains of an <i>in situ</i> wooden post, from the fill of a post-pit at the entrance of an enclosed cemetery.	charcoal	2325	60	-24.8

Loch Shurrery (ND 043 568), Barclay G J

AA-24947	Alder charcoal from the surface of a hearth within a rubble-built house. See also AA-24948.	charcoal	2095	45	-28.1
AA-24948	Alder. See AA-24947.	charcoal	2090	45	-28.0

RADIOCARBON DATES

Newton of Petty, Inverness (NH 7348 4862), Bradley R J

AA-25225	Birch charcoal, probably from a pyre, from a pit sealed by the rubble matrix of the ring cairn just outside the inner kerb of the monument, found together with cremated bone.	charcoal	3755	50	-25.4
AA-25224	Alder from another pit sealed by the rubble matrix of the ring cairn. Charcoal was found throughout the filling of this feature, together with cremated bone. See also AA-25223.	charcoal	2620	75	-25.2
AA-25223	As AA-25225.	charcoal	2765	45	-25.6
AA-25222	Alder from a pit containing pyre debris sealed by a large flat slab underlying the burial in the centre of the ring cairn. Charcoal was found in the lower filling of this feature, together with cremated bone.	charcoal	2785	45	-27.1
AA-25221	Birch from a shallow scoop occupying most of the central area of the ring cairn. A large quantity of the cremated bone found within the same feature comes from a single adult male burial.	charcoal	2685	45	-27.3
AA-25220	Alder. See AA-25221.	charcoal	2890	45	-25.7
AA-25219	Hazel. See AA-25221.	charcoal	3580	50	-24.5
AA-25218	Hazel from a deep pit in the central area of the ring cairn. The pit was interpreted in the field as a post-hole of an alignment – possibly part of a building. However, the charcoal was thought to be possibly from a secondary cremation deposit.	charcoal	2845	45	-25.4
AA-25217	Hazel from a deep stone-filled pit interpreted as a post-pit for a wooden structure in the central area of the ring cairn. It was filled throughout with dark soil and charcoal and included fragments of heat-affected stone.	charcoal	2750	45	-27.9
AA-25216	Alder. See AA-25217.	charcoal	2625	45	-27.7

North Ballachulish (NN 054 602), Clarke C M

GU-4889	Alder which rested directly on a platform below peat.	wood	3320	80	-29.3
GU-4888	Alder from an upright wooden post in a platform below peat.	wooden post	2870	50	-28.6

MORAY

Sueno's Stone (NJ 046 595), Rees T

GU-4868	Pine from a pit with numerous wood charcoal inclusions.	charcoal	4260	60	-25.6
---------	---	----------	------	----	-------

ORKNEY

Bay of Skaili (HY 2294 1876), James H F

GU-7245	Male (young adult) skeleton within a cist in the eroding face of a large multi-period mound at Skaili Bay.	bone human	1410	50	-20.5
---------	--	------------	------	----	-------

Linga Fold, Lyking (HY 264 153), Downes J M

GU-4876	Hazel from a pit in mound 7 containing pyre material, charcoal and burnt bone.	charcoal	3190	90	-26.0
GU-4877	Willow from a burnt layer in a cist representing the remains of a pyre, presumably from a single episode of burning. Later than mound 7 but earlier than the cist cemetery, being sealed by clay platform.	charcoal	3190	60	-26.5
GU-4878	Alder from a layer of burnt pyre material beneath mound 7.	charcoal	3210	50	-26.8
GU-4879	Hazel from a cist on the periphery of mortuary structure. The cist is sealed by turf and topsoil.	charcoal	3210	80	-27.0
GU-4880	Alder from a burnt deposit beneath mound 6 which runs over, around, and into a steatite urn in a pit. See also GU-4881.	charcoal	3380	90	-26.9
GU-4881	Alder from main fill of the steatite cremation urn beneath mound 6. See also GU-4880.	charcoal	3290	60	-28.6
AA-23264	Alder from a cremation deposited in purpose-dug cut adjacent to mound 5.	charcoal	3095	45	-28.1
AA-23265	Hazel from a heap of medium compaction black carbonised material with burnt bone, beneath mound 7.	charcoal	3135	45	-25.4
GU-4884	Alder from pyre with burnt bone, charcoal lumps and cramp beneath mound 5.	charcoal	3460	60	-27.2
AA-23266	Oak from base of pit containing a burnt post beneath mound 5.	charcoal	3035	45	-26.4
GU-4886	Hazel from cremation material redeposited beneath mound 5.	charcoal	3390	60	-26.5
GU-4887	Hazel and alder in fill of cist beneath mound 7.	charcoal	3030	100	-26.5

Skaili House (HY 2346 1860), James H F

GU-7240	Female (mature adult) skeleton, thought to be part of cemetery surrounding and extending beneath Skaili House. The body lay with its head surrounded by a stone slab 'head box' in a grave marked by an upright stone under more than 1m of windblown sand. See also GU-7241.	bone human	750	70	-23.8
GU-7241	Female (adult) skeleton as GU-7240. Single headstone.	bone human	700	50	-19.7
GU-7242	Male (mature adult) skeleton with head surrounded by a stone 'head box' sealed by 0.3m of sand, marked with a headstone and footstone, and three cover slabs. Grave sealed by a further 1m of windblown sand.	bone human	820	60	-20.1
GU-7243	?Male (young adult) skeleton, with upright slab 'grave marker' at its feet. Immediately beneath a child burial.	bone human	710	60	-19.5
GU-7244	Female (adult) skeleton within cemetery, sealed by over 1m of windblown sand.	bone human	790	70	-17.7

RADIOCARBON DATES

PERTH AND KINROSS

Littleour (NO 1734 4024), Barclay G J

GU-4827	Oak from either the burnt outer part of the post, or from a substantial burnt mass on the surface of the site during the rotting of the post in a very large post-hole, part of the wall of a 22m long, 7-8m wide timber enclosure.	charcoal	4600	50	-24.5
AA-22906	A single birch charcoal fragment from a shallow, bowl-shaped pit with a single homogenous fill including large quantities of grooved ware pottery and 7 flints. Likely to be a ritual deposit.	charcoal	3750	50	-26.3
GU-4829	Oak from the pipe of a post-hole immediately to the W of a major timber structure. See also AA-22907.	charcoal	3730	90	-25.5
AA-22907	Pine. See GU-4829.	charcoal	3620	50	-24.5

Muirhall Cist (NO 142 249), Barclay G J

GU-4758	The pig bones were deliberately deposited in a cist with a human burial.	bone animal	3440	55	-23.7
---------	--	-------------	------	----	-------

Westhaugh of Tulliemet (NN 9865 5120), Barclay G J

AA-22181	A burial in a cist	bone human	3415	55	-23.7
----------	--------------------	------------	------	----	-------

STIRLING

Bannockburn, Cowie Road (NS 815 901) Rideout J S

AA-20415	Oak from the fill of a post-hole (PH43) in enclosure 2 of the pit and post enclosures complex.	charcoal	4530	50	-25.3
----------	--	----------	------	----	-------

Chapelfield, Cowie (NS 8363 8957), Atkinson J A

GU-7201	Pine from the basal fill of pit II, sealed by a floor layer which was related to the use of structure E.	charcoal	6710	70	-25.7
GU-7202	Oak from the upper layer of pit VIII, which seems to have been deliberately backfilled shortly after it was dug.	charcoal	4640	90	-26.1
GU-7203	Hazel from the final fill of pit 7 which contained up to five Early Neolithic pottery vessels.	charcoal	4860	100	-25.9
GU-7204	Oak with potsherds from the upper fill of pit 4. The fill sat above a clay lining (446) to the pit.	charcoal	4210	90	-27.1
AA-26226	Pine from the upper fill of pit 5. The fill was a single event over the clay lining of the pit.	charcoal	6705	60	-26.1
AA-26225	Pine from the upper fill of a slot within the entranceway to structure H.	charcoal	6840	85	-26.1
GU-7207	Large lumps of oak from a large dump of oak charcoal at the base of pit 1.	charcoal	5890	90	-25.8
GU-7208	Hazel from the basal fill of pit 7.	charcoal	4800	80	-26.0

WESTERN ISLES

Calanais 1, Lewis (NB 213 330), Ashmore P J

AA-24956	A piece of Pomoideae from an ard mark cut into green clay.	charcoal	3580	45	-26.6
AA-24957	A twig of heather from a charcoal spread which provides only a <i>terminus post quem</i> for a line of stones running from Somerville stone 44.	charcoal	3495	45	-25.0
AA-24958	Birch charcoal from a shallow feature in the inner area of the late structure to E of stone ring and provides only a <i>terminus post quem</i> for paving in that area.	charcoal	4065	45	-26.1
AA-24959	Birch from a charcoal concentration which gave the impression that a fire had been lit on a cultivation surface then dug over once, not long before the ring of stones was set up.	charcoal	4140	45	-26.3
AA-24960	Hazel from a layer of dark brown soil with abundant ard marks commonly filled with charcoal-rich material which probably contains material taken from the chamber of the chambered cairn. See also AA-24961, AA-24962 and AA-24963.	charcoal	4205	50	-25.4
AA-24961	Birch from a similar context to AA-24960, AA-24962 and AA-24963.	charcoal	4055	50	-30.6
AA-24962	Birch from a similar context to AA-24961, AA-24960 and AA-24963.	charcoal	3555	50	-27.2
AA-24963	Birch from a similar context to AA-24961, AA-24960 and AA-24962.	charcoal	4115	45	-25.2
AA-24964	Birch from the layer of green clay on which rested the base layer of the chambered cairn.	charcoal	4185	45	-26.1
AA-24965	Hazel related to a seeming activity layer in the avenue area (but not related to erection of avenue stones).	charcoal	4385	50	-27.2
AA-24966	Birch from part of the infill of the cairn of the chambered cairn.	charcoal	4210	50	-26.1
AA-24967	Hazel from a deposit in the cairn which may be intrusive.	charcoal	4050	45	-25.8
AA-24968	Willow from under the cultivation soil with ard marks and cut by the trench for the secondary kerb stone.	charcoal	3575	45	-25.8
AA-24969	Willow from the fill of primary pit providing a <i>terminus post quem</i> for stone 42.	charcoal	4095	45	-25.4
AA-24970	Hazel from the interrupted truncated slot which is probably part of a light timber structure under the green clay under the chambered cairn.	charcoal	4205	45	-27.4

Dun Vulan, Bornish (NF 7140 2980), Parker Pearson M

AA-22910	Barley from a peat layer thought to have formed in a freshwater loch, prior to sequence of extra-mural deposits outside the broch.	barley seeds	2075	45	-24.3
AA-22911	Barley from a midden-like deposit dumped into a wet depression with organic material, wooden artefacts, pottery and bone and an auk skeleton. Pre-dates the structures outside the broch.	barley seeds	1905	45	-23.2
AA-22912	Barley from an organic layer of compressed vegetable matter, including wood, bone, peat and a sherd derived from activities nearby, under the clean coarse sand on which the broch midden built up.	barley seeds	1945	50	-23.5
AA-22913	Barley from the uppermost (rubbish) layer in the chamber of the broch, lying above a sequence of fill and floor layers within the chamber with pots of inverted rim style.	barley seeds	1880	45	-23.5

RADIOCARBON DATES

Dun Vulcan, Bornish (NF 7140 2980), Parker Pearson M (cont.)

Code	Object	Material	Uncal	Err	d13C
AA-22914	Barley from a layer of organic peat at the base of the cultural sequence of extra-mural deposits outside the broch.	barley seeds	1905	50	-23.9
AA-22915	Barley from a densely organic layer with peat lumps but little bone or pottery between the basal deposit of Late Bronze Age/Early Iron Age pottery and the midden layer of Middle Iron Age pottery.	barley seeds	2055	45	-25.4
AA-22916	Barley from a layer of large pieces of pottery and large pieces of animal bone in a compact sand matrix with cobbles, fire-cracked rock and pebbles, representing the earliest evidence of intense human habitation at Dun Vulcan.	barley seeds	2435	50	-27.2
AA-22917	Charred barley from a waterlogged deposit containing dung and seaweed in front of the extra-mural revetment wall.	barley seeds	1775	45	-23.5

THE NATIONAL MUSEUMS OF SCOTLAND ARCHAEOLOGICAL RADIOCARBON DATING PROGRAMME: DATES OBTAINED DURING 1997

Alison Sheridan, NMS

Introduction

Since 1992, the Archaeology Department of the National Museums of Scotland have been dating organic objects from the NMS collections (for a summary of highlights to 1996, see *Current Archaeology* 149, 188–90). The project is principally driven by the need to obtain dating evidence for objects destined for display in the Museum of Scotland (opening 1998), although it will continue as an important research tool afterwards. A complete list of all archaeological dates obtained for this project to date will be published in 1998 as part of a forthcoming Historic Scotland publication on Scottish C14 dates.

Ten dates were received in 1997; of these, one (OxA-6811) turned out to be a cautionary tale for curators!

Code	Object	Material	Uncal	Err	d13C
ABERDEENSHIRE					
Corrydown (NJ c 43 33), Sheridan, A					
OxA-6812	Shaped calf hide, found with barbed-and-tanged arrowhead (NMS AD 1106).	Calf hide	2835	60	-21.4
Premnay (NJ c 62 24), Sheridan, A					
OxA-6811	Shaft fragment from socketed spearhead (NMS DG 100). Comment: evidently a modern antiquarian's shaft, inserted prior to Museum's acquisition of object in 1937.	Wood (ash; <i>Fraxinus</i>)	130	45	-25.1
ARGYLL AND BUTE					
Dalrigh, nr Oban (NM c 860 307), Sheridan, A					
OxA-6813	Cover for dugout oak coffin, made of sewn birch bark (NMS EQ 192).	Birch bark	3555	60	-27.1
Kiloran Bay (NR c 400 976), Sheridan, A					
OxA-6604	Horse bone from pagan Norse grave (NMS Nat. Hist. Dept).	Bone	1110	45	-22.7
BORDERS					
White Moss (NT 14 49), Sheridan, A					
OxA-6603	Hobble, probably for sheep (NMS IP 11).	Wood (alder/ash; <i>Alnus/Fraxinus</i>)	1395	45	-26.1
DUMFRIES AND GALLOWAY					
Balmaclellan (NX 65 79), Hunter, F J					
OxA-6742	Fragment of cloth wrapping from Iron Age bronzework hoard (NMS FA 14).	Wool	1835	55	-24.2
Dowalton Loch (crannog no 2) (NX c 407 468), Sheridan, A					
OxA-6804	Decorated leather shoe (NMS HU 35).	Leather	1440	40	-21.9
Ravenstone Moss (NX c 40 42), Sheridan, A					
OxA-6815	Rudder-like object (NMS HU 14).	Wood (oak; <i>Quercus</i> sp.)	2470	55	-24.5
ORKNEY					
Evie (HY c 35 23), Sheridan, A					
OxA-6814	Thong from box containing leatherworker's tools (NMS FC 262(4)).	Leather	1300	50	-21.3
Grotstetter (HY 493 063), Sheridan, A					
OxA-6779	Wooden Late Bronze Age sword (NMS DL 62).	Wood (yew; <i>Taxus</i> sp.)	2710	50	-23.3

TREASURE TROVE ADVISORY PANEL

Jenny Shiels and Alan Saville (October 1997)

Introduction

The following is a summary checklist of material recently claimed by the Crown and allocated to the museums or museum services indicated. The list comprises primarily material dealt with by the Panel at its meetings of September 1996, December 1996, and April 1997, but the opportunity is taken to include a few earlier cases inadvertently omitted from the previous checklist (in *DES* 1996).

ABERDEEN CITY

<i>Object</i>	<i>Findspot</i>	<i>Allocation</i>	
Late Neolithic/EBA watching brief finds	Mill of Dyce	Aberdeen City	TT.22/97

ABERDEENSHIRE

<i>Object</i>	<i>Findspot</i>	<i>Allocation</i>	
Three medieval coins	Logie-Coldstone	Aberdeenshire	TT.48/94
Neolithic stone axehead	Cromar	Marischal	TT.06/96
Park Quarry excavation assemblage	Drumoak	Marischal	TT.57/96
17th-century silver hairpin	Kinneff	NMS*	TT.31/96

ANGUS

<i>Object</i>	<i>Findspot</i>	<i>Allocation</i>	
Roman excavation assemblage	Cardean	Angus	TT.18/96
Two Bronze Age axeheads	Balluderon Hill	Angus	TT.35/96
Polished flint axehead	Farnell	Angus	TT.01/97
Excavation assemblage	Kirmienuir	Angus	TT.15/97

ARGYLL AND BUTE

<i>Object</i>	<i>Findspot</i>	<i>Allocation</i>	
Medieval stick pin	Colonsay	Glasgow	TT.45/96
Bronze Age bucket um	Islay	Islay	TT.53/96
Church excavation assemblage	Lismore	NMS*	TT.56/96
Cnoc Eibriginn excavation assemblage	Colonsay	Argyll and Bute	TT.06/97

DUMFRIES AND GALLOWAY

<i>Object</i>	<i>Findspot</i>	<i>Allocation</i>	
Papal bulla	River Nith	Dumfries	TT.30/94
Chapelton excavation assemblage	Haugh of Urr	Stewartry	TT.32/94
Blairhall excavation assemblage	Amisfield	Dumfries	TT.44/94
Carzield excavation assemblage	Kirkton	Dumfries	TT.54/96
Bronze Age flat axehead	Canonbie	Dumfries	TT.59/96
Hoard of silver coins	Closeburn	Dumfries	TT.65/96
Polished stone axehead	Monreith	Stranraer	TT.02/97
Iron Age terret	Castle Douglas	Stewartry	TT.05/97
Chapel Farm excavation assemblage	Moffat	NMS**	TT.07/97
Applegarthtown excavation assemblage	Lockerbie	NMS**	TT.13/97

EAST LoTHIAN

<i>Object</i>	<i>Findspot</i>	<i>Allocation</i>	
Two James VI coins	Longnewton	NMS*	TT.01/96
Castle Park excavation assemblage	Dunbar	NMS*	TT.04/96
Anglo-Saxon strap-end	Aberlady	NMS*	TT.10/96
Cup-and-ring marked stone	East Linton	NMS*	TT.17/96
Lead-alloy ampulla	Haddington	NMS*	TT.29/96
19th-century biscuit maker's stamp	Tranent	NMS*	TT.34/96

CITY OF EDINBURGH

<i>Object</i>	<i>Findspot</i>	<i>Allocation</i>	
Three Bronze Age axeheads	Edinburgh	Edinburgh	TT.26/96
Roman lioness sculpture	Cramond	Edinburgh and NMS	TT.03/97

* = cases allocated to the NMS as the sole bidder.

** = cases allocated to the NMS in the absence of any bids at all.

TREASURE TROVE

FALKIRK

<i>Object</i>	<i>Findspot</i>	<i>Allocation</i>	
Three Roman <i>denarii</i>	Falkirk	NMS*	TT.02/96
Mesolithic barbed antler point	nr Blackness Bay, Carriden	NMS	TT.52/96
Excavation assemblage	Inveravon Roman Fort	Falkirk	TT.19/97
Excavation assemblage	Carriden Roman Vicus	Falkirk	TT.23/97

FIFE

<i>Object</i>	<i>Findspot</i>	<i>Allocation</i>	
Polished flint axehead	Kirkcaldy	Kirkcaldy	TT.09/96
Hoard of billon placks of James VI	Bordie Moor	Dunfermline	TT.11/96
Two Bronze Age axeheads	Anstruther	Cupar	TT.19/96
Medieval excavation assemblage	St Andrews	Cupar	TT.33/96
Stone battle-axe	Bordie	Dunfermline	TT.51/96

HIGHLAND

<i>Object</i>	<i>Findspot</i>	<i>Allocation</i>	
Carved stone ball	unknown	Invermess	TT.36/94
Bronze Age dirk blade	Auldearn, Nairn	Invermess	TT.07/96
Beaker burial assemblage	Loch Shin	Invermess	TT.16/96
Copper-alloy fish hook	?Caithness	NMS*	TT.21/96
Early Historic mount	?Caithness	NMS*	TT.22/96
Early Historic penannular brooch	?Caithness	NMS*	TT.23/96
Late Bronze Age pin	?Caithness	NMS*	TT.24/96
Early Historic mount	?Caithness	NMS*	TT.25/96
18th-century sporran mount	Ullapool	Invermess	TT.27/96
Robert III coin hoard	Culdoich	Invermess	TT.62/96
RCAHMS survey finds	Canna & Sanday	Invermess	TT.64/96

MIDLOTHIAN

<i>Object</i>	<i>Findspot</i>	<i>Allocation</i>	
Stone axehead	Bankton Mains	NMS*	TT.47/96

MORAY

<i>Object</i>	<i>Findspot</i>	<i>Allocation</i>	
Medieval cross slab	Elgin	Elgin	TT.42/96
Bronze Age axehead	Elgin	Elgin	TT.43/96
Hoard of Roman <i>denarii</i>	Birmie	Elgin	TT.04/97

NORTH LANARKSHIRE

<i>Object</i>	<i>Findspot</i>	<i>Allocation</i>	
Excavation assemblage	Mollinsburn	NMS**	TT.11/97

ORKNEY ISLANDS

<i>Object</i>	<i>Findspot</i>	<i>Allocation</i>	
Runestone	Skail, Sandwick	Orkney	TT.48/96
Cruciform copper-alloy mount	Rousay	Orkney	TT.61/96

PERTH AND KINROSS

<i>Object</i>	<i>Findspot</i>	<i>Allocation</i>	
Medieval seal matrix	Coupar Angus	Perth	TT.31/94
Medieval hanging lamp	Coupar Angus	Perth	TT.34/94
Carved stone ball	unknown	Perth	TT.47/94
13th-century seal matrix	Inchaffray	Perth	TT.28/96
Medieval crucifix reliquary	Carpow	Perth	TT.30/96
Excavation assemblage	Dunning Roman Camp	Perth	TT.18/97

SCOTTISH BORDERS

<i>Object</i>	<i>Findspot</i>	<i>Allocation</i>	
Bronze Age polishing stone	Peebles	Borders	TT.43/94
Medieval coin hoard	Ednam	NMS and Borders	TT.50/95
Copper-alloy stylus	Peebles	NMS	TT.68/95
Roman silver <i>denarius</i>	Lilliesleaf	NMS*	TT.78/95
Two silver groats	Melrose	Borders	TT.03/96
Beaker and grave goods	Duns	Borders	TT.08/96

TREASURE TROVE

SCOTTISH BORDERS (cont.)

<i>Object</i>	<i>Findspot</i>	<i>Allocation</i>	
Anglo-Saxon strap-end	Maxton	Borders	TT.13/96
Roman brooch fragment	Maxton	NMS*	TT.14/96
Roman headstud brooch	Maxton	Borders	TT.15/96
Iron Age terret	Kelso	NMS*	TT.36/96
Assorted Roman finds	Tweeddale	Borders	TT.37/96
Assorted Roman finds	Newstead	NMS	TT.38/96
Assorted Roman finds	Kelso	NMS*	TT.39/96
5th-7th-century zoomorphic ring	Maxton	Borders	TT.40/96
Roman headstud brooch	Kelso	NMS*	TT.41/96
Seven Roman coins	Kelso	NMS*	TT.44/96
Pot containing Ednam coin hoard	Ednam	NMS*	TT.50/96
Jedburgh Friary excavation assemblage	Jedburgh	Borders	TT.55/96
Excavation assemblage	Newstead	NMS*	TT.14/97

SHETLAND ISLANDS

<i>Object</i>	<i>Findspot</i>	<i>Allocation</i>	
Iron Age excavation assemblage	Dunrossness	Shetland	TT.05/96
Soapstone bowl	Clousta	Shetland	TT.46/96
Cross-marked slab	Noss	Shetland	TT.49/96

SOUTH LANARKSHIRE

<i>Object</i>	<i>Findspot</i>	<i>Allocation</i>	
Medieval sword pommel	Crawford	Biggar	TT.33/94
Hoard of silver pennies of Edwards I & II	Thankerton	Biggar	TT.12/96
Castledykes Roman Fort excavation assemblage	Lanark	Hunterian	TT.58/96
Biggar Common assemblages	Biggar	Biggar	TT.60/96
Scabgill excavation assemblage	Forth	Biggar	TT.08/97
Boghall excavation assemblage	Forth	Biggar	TT.09/97
Neolithic excavation assemblage	Fagyad Hill Cairn	Biggar	TT.16/97
Excavation assemblage	Elvanfoot	Biggar	TT.17/97
Hillend excavation assemblage	Roberton	Biggar	TT.21/97

STIRLING

<i>Object</i>	<i>Findspot</i>	<i>Allocation</i>	
Bronze axehead fragment	Plean	NMS**	TT.63/96
Callendar watching brief finds	Callendar	NMS**	TT.10/97

WESTERN ISLES

<i>Object</i>	<i>Findspot</i>	<i>Allocation</i>	
Iron Age excavation assemblage	Cnip	Stomoway	TT.20/97

The following TT numbers were not used: 29/94; 37/94; 45/94; 20/96; 32/96; 12/97. Procedural changes implemented during the course of the allocations covered by this list mean that all Scottish museums which are formally registered by the Museums & Galleries Commission are eligible to bid for Treasure Trove/*bona vacantia* material.

Further information on these cases can be obtained from the museums to which they have been allocated, or from the Treasure Trove Advisory Panel Secretariat, c/o Department of Archaeology, National Museums of Scotland, Chambers Street, Edinburgh EH1 1JF.

CURRENT POST-GRADUATE SCOTTISH ARCHAEOLOGICAL RESEARCH IN THE UK

Compiled by Jerry O'Sullivan

Introduction

The following list is by no means exhaustive, and represents only the work of those who responded to a request for research details circulated to all University Departments with a potential archaeological profile. CSA hopes that future volumes of *Discovery and Excavation in Scotland* will incorporate a more extensive list, and encourages any readers engaged in continuing research to submit details (as set out below) for publication in the volume for 1998.

Institution	Name	Research	End-date	Status
Univ Bradford	Steve Dockrill	Northern Isles	2000	PhD
Univ Bradford	Nigel Melton	Post-Medieval Activities in the Northern Isles	1999	PhD
Univ Edinburgh	Derek Alexander	Aspects of Later Prehistoric and Protohistoric Settlement of West Central Scotland		MPhil
Univ Edinburgh	Jessica Backlund	Settlement Landscapes of the Early Medieval Period – Northern Britain & Scandinavia		SP*
Univ Edinburgh	Chris Burgess	Aspects of Settlement Archaeology in North West Lewis		MPhil
Univ Edinburgh	Ruby Ceron-Carrasco	Marine Resources & their Use, Bostadh, Western Isles		SP-PhD
Univ Edinburgh	Mike Church	Utilisation of Plant Resources in Later Prehistory, Lewis, Western Isles		SP-PhD
Univ Edinburgh	Andrew Dunwell	Roman-Native Relationships in North Britain		PhD
Univ Edinburgh	Kirsten Garner	The Impact of Horse-Riding on Selected Areas/Periods of Later Prehistoric Temperate Europe		PhD
Univ Edinburgh	Simon Gilmour	Iron Age Culture and Settlement across the Atlantic Seaboard of Britain & Ireland		PhD
Univ Edinburgh	John Gooder	Long Distance Exchange in the European Upper Palaeolithic & Mesolithic Periods		SP*
Univ Edinburgh	Alex Hale	Crannógs in the Beaully and Cromarty Firths		PhD?
Univ Edinburgh	Andrew Hoan	Palynofacies Analysis of Archaeological Sediments		PhDM
Univ Edinburgh	Mark Holley	Artificial Islands of the Central Inner Hebrides		PhD
Univ Edinburgh	Catherine McGill	The non-Atlantic Iron Age of Scotland		SP*
Univ Edinburgh	Catriona Stewart	Fishing in Mesolithic Europe		SP*
Univ Edinburgh	Adrian Tams	Soil Micromorphology of Archaeological Deposits: Bostadh Beach Project		SP*
Univ Edinburgh	Jennifer Thoms	Zoo-archaeology of Bostadh, Western Isles		SP*
Univ Edinburgh	Simon Wyatt	Musical Instruments in Prehistoric Europe		SP*
Univ Glasgow	Andrew Baines	The Later Iron Age in Northern Scotland	1998	PhD
Univ Glasgow	Christopher S Barrowman	Lithic Scatters in South and Central Scotland	1998	PhD
Univ Glasgow	Kenneth Brophy	The Cursus Monuments of Scotland	1998	PhD
Univ Glasgow	David A McCullough	Portages in the Norse Maritime Landscape of Scotland	1998?	MLitt
Univ Glasgow	Loma Sharpe	Landscape of the Upper Clyde Valley	2001	PhD

CURRENT POST-GRADUATE RESEARCH

Institution	Name	Research	End-date	Status
Univ Oxford	Jon Henderson	Atlantic Facade in the 1st Millennium BC (Evidence of Connections, Bronze Age onwards, <i>between the NW of Britain – Ireland, Orkney Islands, Scotland – and SE Atlantic – Iberia, etc</i>)	1998	PhD
Univ Oxford	Kate Prendergast	The Celestial Orientation of Monuments and Social Practice in the British Neolithic	1997	PhD
RCAHMS	Rebecca H Moloney	The Setting and Context of the Antonine Wall	2000	P-G MLitt
Univ Reading	Tim Phillips	Topography of Chambered Cairns in the North and East of Scotland	1999	PhD
Univ Reading	Aaron Watson	Henges and Stone Circles	2000	PhD
Univ Reading	Paddy Woodman	GIS and the Mesolithic Landscape	1998	PhD
Univ Sheffield	Jane Downes	Bronze Age Burial Rites in the Northern Isles, Scotland	2004	PhD
Univ Sheffield	James McNeil	Demographic Change in the Western Isles of Scotland: the Nineteenth Century Census and the Investigation of Archaeological Interpretation in the Parish of Barra	1998	MPhil
Univ Sheffield	Ymke Mulder	Vegetation of Settlement History of the Outer Hebrides	1998	PhD
Univ Sheffield	Tessa Roper	Human Impact on the Environmental Change in Outer Hebrides throughout the Holocene	1998	PhD
Univ Sheffield	Heather Sugden	Archaeopalynological Investigation of Early Holocene Environments of the Inner Hebrides	2000	PhD
Univ Sheffield	James Symonds	A Study of 18th and 19th Century Rural Life in the Outer Hebrides and Nova Scotia	2003	PhD
Univ Stirling	Fiona Chrystall	Testing for a Relationship between the Form and Function of Medieval or Later Field Systems in Scotland using PC Image Analysis and Soil Micromorphology	1997	PhD
Univ Stirling	Althea Davies	The Holocene Woodland History of Glen Affric, Northern Scotland	1999	PhD
Univ Stirling	Erika Gutteman	Undecided (until early 1998)	2000	PhD
Univ Stirling	Stephen Lancaster	Modelling and Quantification of Faunalurbation on Archaeological Soils	1999	PhD
Univ Stirling	Eileen Tisdall	Looking at Scale and Impact of Holocene Climate Change in Northern Scotland	1999	PhD
Univ Stirling	Clare Wilson	The Micromorphology of Soils under Prehistoric Archaeological Sites	1999	PhD

* = Special post-graduate degree: status not yet confirmed.

LIST OF CONTRIBUTORS

Contributors to this issue of *Discovery and Excavation in Scotland* are listed below.

Comments or queries should be addressed to the contributors.

- ABERNETHY, D: See GUARD.
- ACFA: Association of Certificated Field Archaeologists, Dept Adult and Continuing Education, 59 Oakfield Avenue, Glasgow G12 8LW.
- A-KELLY, C: 15 West Castle Road, Edinburgh EH10 5AT.
- ALBA ARCHAEOLOGY LTD: 129 Lochend Road, Edinburgh EH6 8BX.
- ALEXANDER, D: See CFA.
- ANDERSON, W: %o L Main.
- AOC: AOC (Scotland) Ltd, The Schoolhouse, 4 Lochend Road, Leith, Edinburgh EH6 8BR.
- ARMIT, I: See HS.
- ASHMORE, P: See HS.
- ATKINSON, J A: See GUARD.
- BAKER, F: See FIRAT.
- BANKS, I: see GUARD.
- BARCLAY, G J: See HS.
- BARRETT, J H: Dept Anthropology, Toronto University, Toronto, Ontario M5S 3G3, Canada.
- BARROWMAN, C: See Glasgow University.
- BICKERS, V E: Top Flat, 19 Moorburn Road, Largs, Ayrshire KA30 9JA.
- BISHOP, M: %o AOC.
- BLACK, I: %o R L and S L Hunter.
- BOGDAN, N Q: Scottish Castle Survey, Barra Castle, Old Meldrum, Inverurie, Aberdeenshire AB51 0BB.
- BOND, J M: See Bradford University.
- BOWDEN-SMITH, P: %o P Yeoman.
- BOWLER, D: See SUAT.
- BRABY, A: %o I Armit.
- BRADFORD UNIVERSITY: Dept Archaeological Sciences, Richmond Road, Bradford BD7 1DP.
- BRADY, K J: %o V E Turner.
- BRANN, J: Environment & Infrastructure, Dumfries & Galloway Council, 4 Market Street, Castle Douglas DG7 1BE.
- BRAY, A: See ACFA.
- BRIDGLAND, D: %o A Saville.
- BROPHY, K: See Glasgow University.
- BURGESS, C: See Edinburgh University.
- CACHART, R: See SUAT.
- CALDWELL, D H: See NMS.
- CAMERON, A: Archaeological Unit, Arts and Recreation Dept, The Art Gallery, Schoolhill, Aberdeen AB10 1FQ.
- CAMERON, K: See CFA.
- CARTER, S: See HAL.
- CARVER, M: See York University.
- CFA: Centre for Field Archaeology, Edinburgh University, Old High School, 12 Infirmary Street, Edinburgh EH1 1LT.
- CHESTERMAN, C: %o R Page.
- CHRISTIE, C: 2 Meikle Ehdorrie Cottages, Alford.
- CHURCH, M: See Edinburgh University.
- CLARKE, C: See CFA.
- COCHRANE, E: %o A Penman.
- COLEMAN, R: See SUAT.
- COLES, G: %o D Alexander.
- CONNOLLY, D: See Kirkdale Archaeology.
- COOK, M J: See AOC.
- COX, A: See SUAT.
- CRAIG, P: Cranbrook, Burnside Road, Tarland, Aberdeenshire AB34 4YL.
- CRESSEY, M: See CFA.
- CULLEN, I: See GUARD.
- CURTIS, M R and G R: 'Olcote', New Park, Callanish, Isle of Lewis HS2 9DZ.
- DALLAND, M: See HAL.
- DAVIS, T: Dept Geography, Toronto University, Toronto, Ontario M5S 3G3, Canada.
- DEAN, V E: 50 Whitehouse Road, Edinburgh EH4 6PH.
- DICK, A M: 3 Grampian Crescent, Kirriemuir, Angus DD8 4TW.
- DINGWALL, C: See Fife Council.
- DOBSON, N C: Maritime Fife, Scottish Institute of Maritime Studies, St Andrews University, St Andrews, Fife KY16 9AJ.
- DOCKRILL, S J: See Bradford University.
- DONNELLY, M: See GUARD.
- DRANSART, P Z: Dept Archaeology, University of Wales, Lampeter, Dyfed SA48 7ED.
- DUFFY, P: See GUARD.
- DUNCAN, J: See GUARD.
- DUNLOP, A: 88 Ugie Road, Peterhead.
- DUNN, A: See Kirkdale Archaeology.
- DUNWELL, A: See CFA.
- EASE: Environmental and Archaeological Services, Unit 8, Abbeymount Techbase, 2 Easter Road, Edinburgh EH7 5AN.
- EDINBURGH UNIVERSITY: Dept Archaeology, Old High School, Infirmary Street, Edinburgh EH1 1LT.
- EDWARDS, K J: Dept Archaeology and Prehistory, Sheffield University, Northgate House, West Street, Sheffield S1 4ET.
- ELLIS, C: See AOC.
- ENGL, M: See AOC.
- ETHERIDGE, D: See GUARD.
- EWART, G: See Kirkdale Archaeology.
- EXTON, H: 'Nyuggel', Lunabister, Dunrossness, Shetland ZE2 9JH.
- FARRELL, S: 34 Huntly Drive, Glenrothes, Fife KY6 2HS.
- FIFE COUNCIL: Planning Service, Fife House, North Street, Glenrothes, Fife KY7 5LT.
- FINLAYSON, B: See CFA.
- FIRAT: FIRAT Archaeological Services, 50 Campbell Street, Helensburgh G84 9NH.
- FLITCROFT, C: See Edinburgh University.
- FLOWER, C: See WoSAS.
- FRENCH, C: See GUARD.
- GARNER-LAHIRE, J: See York University.
- GILMOUR, S: See Edinburgh University.
- GLASGOW UNIVERSITY: Dept Archaeology, Gregory Building, Lilybank Gardens, Glasgow G12 8QQ.
- GLENDINNING, B: See CFA.
- GOODER, J: See AOC.
- GORMLIE, D: %o R L and S L Hunter.
- GOVAN, S: See Fife Council.
- GRAHAM, A: 16 Bowfield Road, West Kilbride, Ayrshire KA23 9JY.
- GREIG, M: Planning and Economic Development, Aberdeenshire Council, Woodhill House, Westburn Road, Aberdeen AB16 5GB.
- GUARD: Glasgow University Archaeological Research Division, Dept Archaeology, Glasgow University G12 8QQ.
- HAL: Headland Archaeology Ltd, Albion Business Centre, Unit B4, 78 Albion Road, Edinburgh EH7 5QZ.
- HALE, A G C: See Edinburgh University.
- HALL, D: See SUAT.
- HALLIDAY, S: See GUARD.
- HALLYBURTON, I: 63b Perth Road, Scone, Perthshire PH2 6JL.
- HAMILTON, J: See CFA.
- HANLEY, R: %o J Wordsworth.
- HANNAH, A: Bute Museum, Stuart Street, Rothesay, Isle of Bute PA20 0EP.

LIST OF CONTRIBUTORS

- HARDING, D I: 120 King Street, Aberdeen AB24
HARRINGTON, P: 87 George Street, Whithorn DG8 8PZ.
HARRIS, J: 78 Lillian Road, Barnes, London SW13 9JF.
HEALD, A: See Edinburgh University.
HENRY, B: c/o D Alexander.
HOLDEN, T: See HAL.
HOLLINRAKE, A: See Kirkdale Archaeology.
HOOD, F: Craiglussa, Peninver, Campbeltown, Argyll PA28 6QP.
HOWARD, W J: Old Schoolhouse, Kirkton of Bourtie, Inverurie AB51 0JS.
HS: Historic Scotland, Longmore House, Salisbury Place, Edinburgh EH9 1SH.
HUNTER, J R: Dept Ancient History and Archaeology, Birmingham University, Edgbaston, Birmingham B15 2TT.
HUNTER, R L and S L: 69 Craighill Drive, Clarkston, East Renfrewshire G76 7TD.
HUNTLEY, J: c/o P G Johnson.
JAMES, H F: See GUARD.
JOHNSON, P G: See Glasgow University.
JOHNSTONE, L H: See GUARD.
KING, M D: Fife Museums Services, County Buildings, Cupar KY15 4TA.
KIRBY, J E: Dahl, Polloch, Glenfinnan, Fort William, Inverness-shire PH37 4LX.
KIRKDALE ARCHAEOLOGY: 4 Western Terrace, Murrayfield, Edinburgh EH12 5QF.
LARSEN, A-C: c/o V E Turner.
LAW, N: See WoSAS.
LELONG, O: See GUARD.
LESLIE, A: See GUARD.
LEWIS, J: See Scotia Archaeology Ltd.
LONEY, H: See GUARD.
LONIE, W: 11 Dean Place, Newstead, Melrose TD6 9RL.
LOWE, C: See HAL.
McCULLAGH, R: See AOC.
MacDONALD, J: 35 Cochran Street, Paisley PA1 1JZ.
McGILL, C: See CFA.
MacGREGOR, G: See GUARD.
MacINNES, D: See ACFA.
MacLEOD, M: c/o V E Turner.
MacNEILL, B: c/o F Hood.
McRAE, S: Clach-Mhuilinn, Cowhill Balmedie.
MAIN, L: Environmental Services, Stirling Council, Viewforth, Stirling FK8 2ET.
MAXWELL, G S: 'Mickelgarth', 72a High Street, Aberdour, Fife KY3 0SW.
MILLER, C A: RESURGAM!, 11 Valleyfield, East Kilbride, Glasgow G75 8SB.
MOLONEY, C: See HAL.
MOORE, H: See EASE.
MORRIS, C D: c/o V E Turner.
MORRISON, A: See Glasgow University.
MURDOCH, R: See Scotia Archaeology Ltd.
MURRAY, D: See Kirkdale Archaeology.
NEIGHBOUR, T: See CFA.
NMS: National Museums of Scotland, Chambers Street, Edinburgh EH1 1JF.
NTS: National Trust for Scotland, The Old Granary, West Mill Street, Perth PH1 5QP.
O'CONNOR, P: See Fife Council.
O'SULLIVAN, J: See GUARD.
PAGE, R: 'Kingarth', Airthrey Road, Stirling FK9 5PH.
PENMAN, A: 'Kingston', Rhonehouse, Castle Douglas DG7 1SA.
PERRY, D: See SUAT.
PETERSON, R: c/o E Proudfoot.
PHOTOS-JONES, E: Scottish Analytical Services for Art and Archaeology, c/o GUARD.
PICKIN, J: Stranraer Museum, 55 George Street, Stranraer DG9 7JP.
POLLARD, T: See GUARD.
PROUDFOOT, E: St Andrews Heritage Services, Westgate, 12 Wardlaw Gardens, St Andrews KY16 9DW.
RADLEY, A: See Kirkdale Archaeology.
REES, A: See CFA.
REES, T: See AOC.
RENNIE, E B: Upper Netherby, Kirm, Dunoon.
RIDEOUT, J S: See Alba Archaeology Ltd.
ROBERTSON, J: Garden Cottage, Ardtomish Estate, Morvern, by Oban, Argyll PA34 5UZ.
ROBERTSON, N: See SUAT.
ROBINS, G: c/o AOC.
ROBINS, P: See WoSAS.
ROE, A: See York University.
SABINE, K A: Moss-side Croft, Wartle, Inverurie, Aberdeenshire AB51 5BA.
SAVILLE, A: See NMS.
SCOTIA ARCHAEOLOGY LTD: 29 Hillside Crescent, Edinburgh EH7 5EF.
SCOTT, I G: 3 Saxe-Coburg Street, Edinburgh EH3 5BN.
SCOTT, J G: Kirkcudbright Training Area, Dundrennan, Kirkcudbright DG4 4QZ.
SHARMAN, P: See Kirkdale Archaeology.
SHARPLES, N: Dept Archaeology, University of Wales, Cardiff, Box 909, Cardiff CF1 3XU.
SHETLAND MUSEUM: Shetland Museums Service, Lower Hill Head, Lerwick ZE1 0EL.
SIMPSON, B: See GUARD.
SIMPSON, I: Dept Environmental Science, Stirling University, Stirling FK9 4LA.
SPELLER, K: See GUARD.
STEWART, M: c/o L Main.
STEWART, D: See Kirkdale Archaeology.
STONES, J: Archaeological Unit, Arts and Recreation Dept, The Art Gallery, Schoolhill, Aberdeen AB10 1FQ.
STRACHAN, R: See CFA.
STRONACH, S: See SUAT.
STUART, E: See Glasgow University.
STUMMANN HANSEN, S: c/o V E Turner.
SUAT: Scottish Urban Archaeological Trust, 55 South Methven Street, Perth PH1 5NX.
SUDDER, C: c/o J Stones.
SWIFT, C: See CFA.
TAYLOR, S: See Fife Council.
TERRY, J: See Scotia Archaeology Ltd.
TOMPSETT, G: See GUARD.
TOOLIS, R: Solway Heritage, Campbell House, The Crichton, Bankend Road, Dumfries DG1 4ZB.
TOPEN, D: 10 Banavie Road, Glasgow G11 5AN.
TRISCOTT, J: See Kirkdale Archaeology.
TURNER, R: See NTS.
TURNER, V E: Shetland Amenity Trust, 22-24 North Road, Lerwick, Shetland ZE1 0NQ.
WALLACE, S A: See NTS.
WARD, T: Biggar Museum Trust, 4 James Square, Biggar, Lanarkshire.
WATSON, G: 'Caimroy', 20 Spoutwells Drive, Scone, Perth PH2 6RR.
WHITTINGTON, G: School of Geography and Geosciences, St Andrews University, St Andrews, Fife KY16 9AJ.
WILLIAMSON, S: Little Flinder, Inch.
WILSON, G: See EASE.
WOOD J S: c/o J Macdonald.
WORDSWORTH, J: Wordsworth Archaeological Services, Balbeg, Balnain, Glenurquhart, Inverness-shire IV3 6XQ.
WoSAS: West of Scotland Archaeology Service, Charing Cross Complex, 20 India Street, Glasgow G2 4PF.
YEOMAN, P: See Fife Council.
YORK UNIVERSITY: Dept Archaeology, King's Manor, York YO1 2EP.

SELECTIVE INDEX TO THE ARCHAEOLOGICAL CONTRIBUTIONS

Compiled by Kenneth Aitchison

- Abbey, 18, 23, 26, 30, 32, 33, 34, 55–6, 57, 66–7, 79–80
- Aerial survey, 6, 54–5
- Air-raid shelter, 5, 28, 37
- Amethyst, 24
- Antonine Wall, 28, 29, 83
- Aqueduct, 52, 78
- Ard: marks, 18, 56, 71
point, 71
- Arrowhead: barbed-and-tanged, 5, 19, 76
chisel-shaped, 76
leaf-shaped, 76
lozenge-shaped, 5
- Artificial island, 19
- Awl, 15, 68
- Axe: flint, 12, 14, 34
hammer, 73
stone, 24, 65, 68, 73
- Backlands, medieval, 16, 27, 30, 40, 41, 65
- Bailey, 24, 82
- Barmkin wall, 73
- Barn, 60
- Barrow, 62
cemetery, 13, 39
round, 13, 15
square, 13, 15
- Bayonet, 52
- Bead: faience, 24
glass, 39, 79
jet/shale, 75
- Beaker, pottery, 43, 84
- Bee-boles, 39–40
- Bell, 46
pits, 28
- Bishop's Palace, 8, 46, 79
- Blackhouse, 83
- Blackpowder works, 26–7
- Bleachworks, 42, 52
- Bloomery, 17, 46, 47, 63, 78
- Boat, 38
noost, 18, 58, 59, 60
yard, 33
- Boat-shaped setting, 70
- Boathouse, 8, 49, 50, 58, 59, 60
- Bone: animal, 16, 18, 19, 30, 33, 40, 41, 52, 55, 58, 61, 64, 66, 68, 71, 84–5, 86
bird, 69
comb, 60, 84–5
cremated, 84
disc, 19
fish, 61
human: *see* Human remains
pin, 46, 61
spindle whorl, 61
weaving tablet, 84–5
whale, 61, 84–5
worked, 61, 68
- Bowl, 13
furnace, 47, 69
- Bracelet, shale, 76, 85
- Brandy hole, 25
- Brickworks, 35
- Bridge, 5, 11, 17, 28, 31, 40, 42, 44, 45, 56, 57, 78, 79, 80–81
- Broch, 52, 58, 59, 60, 69–70
- Bronze: awl, 68
lid, 16
ornamental, 24
pin, 68
sheet, 13
- Bronze Age: arrowhead, 19
axehead, 73
cairn, 49, 66
cemetery, 21, 43
site, 13, 27, 39, 85
see also Pottery; Settlement; Structure; Urn
- Brooch, 34, 46
Roman, 24
- Buckle, 33, 34, 65, 85
- Building: *see* Structure
- Burgh, medieval, 16, 24, 26, 27, 29, 39, 41, 77, 82
- Burial, 13, 19, 30, 33, 36, 38, 39, 41, 52, 53–4, 60, 61, 64, 84
animal, 41, 86
cairn, 13, 24, 59, 71, 78, 82, 86
chamber, 84
child, 38
cremation, 39
horse, 58
mound, 59, 60, 79
see also Cemetery
- Burnt mound, 22, 25, 26, 39, 47, 51, 58, 59, 60, 68, 70, 73–4, 75, 76, 84
- Button, 46
loop fastener, 14
- Byre, 48, 50, 51, 62
- Cairn, 5, 16, 26, 31, 38, 44–5, 46, 48, 49, 51, 56, 58, 60, 66, 70, 75, 77, 78
burial, 13, 24, 59, 71, 78, 82, 86
chambered, 18, 45, 47, 56, 59, 68, 71, 84
circular, 61, 79
clearance, 5, 6, 9, 13, 14, 16, 18, 26, 31, 38, 44, 45–6, 48, 51, 52, 56, 66, 71, 78, 85
field, 7, 26, 48, 49
heel-shaped, 71
kerb, 12, 19, 22, 49, 50, 51, 56, 71, 84
linear, 38
prehistoric, 18, 24, 58, 60
ring, 9, 13, 27, 51, 75
round, 13
- Canal, 5, 11
- Castle, 7, 9, 23, 32, 33, 38, 50, 52, 53, 56, 64, 73, 74, 81–2
- Cathedral, 42–3, 55
- Causeway, 19, 25, 34, 85
- Cemetery, 5, 42–3, 46, 47, 48, 51, 55–6, 63, 78
barrow, 13, 39
Bronze Age, 21, 43
cremation, 26, 75
long cist, 35–6, 53–4
medieval, 18, 23, 30, 36, 49, 51, 61, 64
Norse, 60
- Chambered tomb, 84
- Chapel, 18, 22, 23, 29, 34, 35–6, 37, 40, 48, 49, 59, 60, 69, 71, 73, 81–2
- Chapter house, 67
- Charcoal, 9, 10, 13, 18, 19, 24, 25, 43, 47, 48, 49, 51, 53, 63, 65, 75, 76, 79, 82, 83
- Charcoal-burning platform, 16, 17
- Chert, 21, 67, 75, 76
blade, 32, 49
- Church: medieval, 30, 38, 40, 43, 48–9, 51–2, 67, 68, 77
shell, disguising, 38
- Cist, 18, 21, 39, 47–8, 51–2, 56, 60–61, 82
corbelled, 84
long, 35–6, 41, 53–4
- Cistern, 12, 50
- Cleit, 21–2, 83
- Clay pipe, 33, 39, 46, 65
- Cloister, 55–6
- Coffin fittings, 42–3, 47, 48
- Coin, 19, 24, 35, 46, 61, 77, 84–5
- Comb, 60, 61, 85
- Copper alloy, artefact, 18, 33, 34, 36, 46, 65, 84–5
- Copper working, 69
- Corn stack, 31
- Crannog, 66, 83
- Cropmark, 6, 11, 13, 15, 23, 24, 35, 39, 54, 55, 65–6, 79–80
enclosure, 27, 35, 42, 48, 49, 54, 55, 75
- Cross slab, 52
- Culvert, 25, 35, 64, 72
- Cup-and-ring mark, 18
- Cup marks, 6, 9, 53–4, 56
- Cursus, 15, 21, 65
- Dam, 7, 35, 37, 44, 52, 55, 78, 82
- Deserted settlement, 16, 17, 22, 31, 35, 36, 37, 44, 45, 49, 66, 73
- Designed landscape, 6, 32, 33, 35, 42, 66
- Dock, 50, 83
- Doocot, 5, 34
- Droeway, 63
- Dun, 22, 86
- Enclosure, banked, 15, 34
circular, 6, 12, 58
ditched, 6
drystone, 38, 44–5
oval, 5, 6, 55, 62
promontory, 59, 66, 68
rectangular, 6, 42, 55, 59, 60
- Engine house, 5
- Farm site, abandoned, 31, 34, 45–6, 51, 71, 73, 75
- Farmstead, 6, 7, 8, 11, 12, 15, 17, 22, 25, 26, 27, 28, 31, 36, 37, 45, 48, 50, 51, 52, 54, 55, 57, 71, 73, 75
- Felsite: axe, 68
knife, 68
- Fermtoun, 45–6
- Field system, 6, 7, 13, 15, 16, 17, 25, 26, 31, 32, 45, 55, 58, 59, 63–4, 68, 70, 71, 76, 78–9
- Fish trap, 24
- Fishing station, 54, 68
- Flint, 15, 18, 22, 32, 67

INDEX

- Flint (cont.)
 assemblage, 5, 8, 10, 11, 13, 19, 63, 76
 awl, 15
 axe, 12, 14, 34
 blade, 18, 21, 63, 79
 core, 11, 21, 45, 75, 76
 flake, 11, 18, 21, 22, 35, 45, 47–8, 84
 knapping, 10, 75
 knife, 7–8, 76
 microlith, 63, 75, 76
 scatter, 7–8, 18, 21, 35, 39, 45, 74–5, 76
 scraper, 7–8, 13, 21, 35, 76
 see also Arrowhead
- Folly, 39, 48
- Food vessel: *see* Urn
- Fort, 11, 24, 44, 49, 64–5
 Iron Age, 46
 promontory, 24, 59, 68–9
 Roman, 29, 32, 62, 67, 79
 vitrified, 11, 16
- Friary, 64, 65, 67
- Fumace, 69, 78
 ironworking, 28, 41, 44, 46, 47
- Garden, 8–9, 18, 29, 32, 33, 34, 37, 38, 39–40, 42, 48, 53, 64, 66, 77
- Garderobe, 8
- Gasworks, 37
- Geophysical survey: *see* Survey
- Glass, 8, 13, 28, 41, 48, 49–50, 58, 63, 79
 bead, 39, 79
 bottle, 7, 12, 16, 26, 64, 65
- Grain, carbonised, 13, 61, 66–7
- Gravestone, 12
- Graveyard: *see* Cemetery
- Greenhouse, 37, 42
- Hammerstone, 24, 67, 68, 76, 84–5
- Harbour, 24, 33, 53, 59, 66
- Hazelnut shells, 13, 19, 38–9
- Henge, 56
- Hillfort, 15–16, 23, 64
- Hollow-way, 13, 31, 55
- Hospital site, 27, 41
- House: *see* Structure; Tower house
- Human remains, 13, 18, 21, 27, 30, 36, 38, 39, 42–3, 47–8, 51–2, 53–4, 57, 60–61, 63, 64, 84
- Hut: circle, 5, 6, 11, 26, 32, 50, 51, 56, 64, 72, 82
 platform, 12, 22, 23, 28, 37, 38, 44, 45, 49, 50, 51, 52, 66, 75, 78, 85
 see also Roundhouse
- Ice: house, 7, 40, 49, 57, 66, 74
 pond, 7
- Industrial complex, 27, 28, 77
- Iron: artefact, 46, 48, 52, 57, 62, 63, 65, 82, 84–5
 tool, 33, 39
- Iron Age: artefact, 14, 19, 24, 25, 30, 68
 cellular building, 69–70
 fort, 46, 68–9
 midden, 68
 site, 68
 see also Pottery; Settlement; Structure
- Ironworks, 27, 28, 46–7, 77
- Jet, bead, 75
- Jetty, 19, 44, 46, 47, 60
- Kelp drying wall, 59, 60
- Kiln, 15, 42, 43, 47, 77, 78
 barn, 50
 corn, 9, 17, 28, 44, 45–6, 59, 60, 69, 78
 lime, 6, 26, 28, 36, 37, 38, 45–6, 49, 57, 73, 76–7, 78, 79
- Knife: felsite, 68
 flint, 7–8, 76
 stone, 71
- Lamp, stone, 13
- Lazy beds: *see* Rig
- Lead: pipe, 53, 82
 window, 8
- Lead alloy: bulla, 34
 Pilgrim badge, 33
 spindle whorl, 33, 34
- Leather, 19, 53
- Lighthouse, 58, 59, 60, 66
- Lithics: assemblage, 24
 scatter, 15, 21, 22, 45, 75, 76
- Longhouse, 6, 43, 44, 45–6, 47, 48, 70, 75, 84–5
- Loomweight, 68, 69, 70
- Mansion house, 8, 17, 45
- Medieval: backlands, 16, 27, 30, 40, 41, 65
 bailey, 24, 82
 bridge, 80–81
 burgh, 16, 24, 26, 27, 29, 39, 41, 77, 82
 cemetery, 18, 23, 30, 36, 49, 51, 61, 64
 chapel, 22, 23, 40, 48, 49, 59, 69, 81–2
 coin, 19, 24
 gravemarker, 43
 midden, 12, 19, 81–2
 thimble, 24
 town, 12, 27
 see also Pottery; Settlement, Structure
- Mesolithic: flint, 19, 39, 67, 75
 site, 75
 tool, 63
 see also Settlement
- Metalworking, 12, 40, 41, 44, 52, 69, 76, 84–6
 slag, 46, 47, 49, 68, 78, 82, 84–6
- Midden, 12, 18, 19, 30, 34, 46, 61, 68, 69, 81–2, 84
 shell, 23, 71
- Milestone, 5, 64
- Mill, 15, 31, 35, 37, 45, 49, 55, 60, 75
 corn, 11, 37
 horse, 6, 46
 lade, 5, 11, 22, 31, 34, 35, 49, 55
 lint, 31, 61
 wind, 5, 59
- Millstone, 18
- Mine, 44
 adit, 35
 coal, 28, 35, 36, 37
 lead, 19–20, 59
- Moat, 52
- Monastery, 64
- Mortuary building, 53–4, 85
- Motte, 24, 26, 42, 46, 48
- Nail, 18, 24, 28, 39, 47, 48, 61, 62, 65, 68, 79, 82
- Neolithic: artefact, 21, 49
 axehead, 14, 65
 carved stone ball, 8, 9, 10, 51–2
 chambered tomb, 13, 84
 earthwork, 68
 site, 21, 27, 39, 52, 68
 see also Pottery; Settlement; Structure
- Noost: *see* Boat noost
- Norse: artefact, 70
 cemetery, 60
 comb, 60, 61
 midden, 61
 pin, 68
 site, 70
 spindle whorl, 69, 70
 weight, 61
 see also Pottery; Settlement; Structure
- Oven, 34, 62, 81
- Painting, ceiling, 39–40
- Palace, 8, 32–3, 36, 37, 38, 46, 77, 79, 81–2, 83
- Palisade, 15, 21, 22, 24, 53–4, 62
- Passage grave, 13
- Pendant, 33, 34
- Pictish, stone, 51–2, 67
- Pier, 50, 59, 60
- Pin: bone, 84, 61
 bronze, 68
- Pit: alignment, 53–4, 65–6
 circle, 21
 clay, 35
 coal, 28, 36, 37, 57
 kelp, 59, 60
 prehistoric, 10, 13–14, 38, 39
- Pitcarmick-type building, 12
- Pitchstone, 21, 22, 76
 Arran, 13
- Platform: charcoal-burning, 16, 17
 hut, 12, 22, 23, 28, 37, 38, 44, 45, 49, 50, 51, 52, 66, 75, 78, 85
- Ploughshare, 68
- Post-hole alignment, 21
- Post-medieval: artefact, 33, 42, 46, 52, 82, 83
 fields, 63
 see also Pottery; Settlement; Structure
- Pottery, 13, 18, 28, 32, 40, 84
 Beaker, 43, 84
 Bronze Age, 13, 39, 49, 84, 85
 burnished ware, 71
 coarse greyware, 79
 Colstoun ware, 30
 Craggan ware, 47
 earthenware, 53, 68
 East Coast Redware, 30
 East Coast White Gritty, 41
 green glaze, 16, 24, 26, 41, 57–8, 80
 Grooved ware, 13–14
 Impressed ware, 13–14
 Iron Age, 14, 68, 69, 70, 71, 84
 medieval, 5, 10, 12, 16, 18, 19, 26, 27, 30, 32, 35, 40, 41, 43, 52, 55, 63, 64, 65, 66, 73, 77, 85–6
 Neolithic, 13, 49, 76, 84
 Norse, 61, 69
 post-medieval, 18, 23, 26, 27, 35, 57–8, 61, 67
 prehistoric, 10, 38, 53–4, 63, 83, 84
 redware, 30, 63, 79
 Roman, 24, 32, 62, 79
 samian, 14, 79
 terra nigra, 79
 Throsk ware, 22
- Potworks, 42
- Prehistoric: artefact, 19, 30
 cairn, 18, 24, 58, 60
 ceremonial complex, 19, 21
 field system, 7, 13, 70

- Prehistoric (cont.)
 site, 8, 10, 19, 24, 42, 43, 53–4, 56, 58, 73
see also Pottery; Settlement; Structure
- Priory, 30, 34
- Pumice, 68
- Pump, wind, 31
- Quarry, 5, 7, 12, 15, 18, 26, 28, 31–2, 35, 37, 38, 44, 49, 50, 52, 63, 65, 73, 78, 79, 82
- Quartz, 22, 32, 35, 49, 68, 84, 85
 worked, 47–8, 51, 63, 85
- Quern, 34, 64, 68
 rotary, 14, 34, 69, 71
 saddle, 12, 25, 57, 67
 trough, 68, 76
- Railway, 5, 11, 28, 57, 65–6
- Rampart, 11, 15, 29, 62, 69
- Reservoir, 31, 52
- Resistivity survey: *see* Survey
- Ridge, fortified, 48
- Rig, 6, 18, 23, 31, 34, 44, 49, 50, 55, 56, 66, 78–9, 85–6
 and furrow, 5, 6, 13, 15, 17, 22, 25, 26, 28, 31, 32, 34, 38, 42, 52, 56, 57, 65–6, 78, 79–80
- Ring: copper-alloy, 33, 34
 gold, 33
 silver, 33, 34
- Ring-ditch, 6, 15, 39, 54, 55
- Road: military, 63, 78
 Roman, 25, 62, 67, 75–6
- Rocket house, 5
- Roman: artefact, 14
 bathhouse, 53–4
 brooch, 24
 camp, 25
 ditch, 78, 79
 fort, 29, 32, 62, 67, 79
 glass, 79
 nails, 79
 road, 25, 62, 67, 75–6
 signal station, 62
 surgical instrument, 24
 temporary camp, 10, 34, 53, 62
see also Pottery; Settlement; Structure
- Roundhouse, 9, 12, 13, 14, 24, 31, 38, 44, 47, 48, 49, 51, 52, 69
 ring-ditch, 9–10
- Scraper, 7, 8, 13, 21, 35, 76
- Settlement: Bronze Age, 39, 51
 deserted, 16, 17, 22, 31, 35, 36, 37, 44, 45, 49, 66, 73
 enclosed, 15
 Iron Age, 14, 24, 68, 69–70, 84–5
 medieval, 12, 16, 17, 19, 24, 25, 30, 40, 40–41, 46, 51–2, 64, 66–7, 73, 78–9, 82
 Mesolithic, 24, 63
 Neolithic, 24, 76, 68
 Norse, 61, 70, 84–5
 post-medieval, 7, 8, 16, 17, 18, 27, 39, 40, 44, 45, 48, 49, 56, 58, 59, 60, 66–7, 83
 prehistoric, 13, 25, 26, 39, 71
 Roman, 24
 unenclosed, 15
- Shale: bead, 75
 bracelet, 76, 85
- Sheepfold, 6, 27, 28, 46, 75
- Shell: midden, 18, 23, 71
 oyster, 30, 32
- Shieling, 6, 7, 8, 12, 16, 17, 22, 23, 27, 28, 44, 45, 46, 48, 50, 51, 56, 63, 64, 71, 73, 75, 78, 85
- Shipwreck, 33, 38, 39, 58, 59
- Shoe, 19
- Shooting: butt, 12, 14, 15, 63
 trench, 8
- Shrine panel, 30
- Sinker, 68, 69, 70
- Slag: *see* Metalworking
- Slate, 7, 47
- Slipway, 5, 58, 60
- Soilmark, 6, 37
- Souterrain, 13, 14, 15, 50, 51–2, 54
- Spearhead, 84–5
- Spindle whorl, 33, 34, 39, 45, 61, 69, 70
- Stables, 26, 28, 38, 77
- Standing stone, 17, 26, 33, 39, 56, 62–3, 70, 83
- Steatite, 68, 70, 84–5
 bangle, 68
 vessel, 61, 68, 69, 70, 71, 84–5
- Stone: alignment, 17, 46
 anvil, 68
 axe, 24, 65, 68, 73
 ball, 8, 9, 10, 51–2
 boundary, 5, 7–8, 45, 59
 carved, 5, 17, 23, 30, 32, 37, 39, 43, 50, 64, 69, 82
 circle, 9, 56, 62–3, 67
 incised, 30, 50, 62
 inscribed, 5, 52
 lamp, 13
 objects, 7, 39, 68, 71
 Pictish, 51–2, 67
 ploughshare, 68
 recumbent, 9, 62–3
 setting, 12, 31–2, 46, 56, 70, 86
 slotted, 5
 standing, 17, 26, 33, 39, 56, 62–3, 70, 83
 tool, 35, 68
- Structure: beehive, 83
 Bronze Age, 39, 49, 68, 84
 cellular, 69, 84, 85–6
 four-post, 62
 Iron Age, 25, 35, 70, 71, 72, 84–5
 medieval, 39–40, 42, 57–8, 73
 Neolithic, 49, 60, 68
 Norse, 61, 70, 84–5
 post-medieval, 18, 19, 27, 29, 34, 35, 39–40, 46, 58, 59, 60, 65, 77
 prehistoric, 31, 39, 58, 59, 60–61, 63, 68, 71, 77, 84, 85
 ring-groove, 9, 53–4
 Roman, 24
 scree, 83
 timber, 6, 9, 10, 24, 82, 83
- Survey, coastal, 23–4, 33, 58–60
 geophysical, 14, 25, 26, 32, 35, 37–8, 46, 47, 49, 50, 51, 52, 60, 61, 70, 71, 73, 84–5
- Survey (cont.)
 pre-afforestation, 7, 8, 9, 10, 12, 13, 26, 38, 44, 45, 48, 49, 52, 63, 77, 79
 resistivity, 32, 36, 41, 52, 64, 79–80
 sonar, 80–81
- Tank, stone-lined, 69, 82
- Thimble, 24
- Tile, 33, 39
- Timber: artefact, 19
 circle, 19, 21
 tower, 24
 worked, 19
see also Structure
- Tollhouse, 5
- Totenmemorium, 53–4
- Tower: house, 8, 26, 73
 Martello, 60
 Roman, 62
 solar, 19
 timber, 24
- Township, 22, 43, 44, 45, 50, 79, 84
- Trackway, 9, 11, 12, 13, 15, 16, 19, 26, 28, 31, 34, 35, 37, 52, 53, 57, 58, 59, 60, 66, 70, 76, 78, 79
- Tramway, 5, 28
- Trough, 25, 39, 74
 quern, 68, 76
- Turf: bank, 15, 21, 51, 53, 62, 63, 73, 75
 dyke, 17, 18, 22, 61
 wall, 18, 22, 43, 44, 45, 46, 48, 53, 56, 75
- Tuyere, 46, 85–6
- Urn: collared, 13
 cremation, 18
 food vessel, 13
- Viking: *see* Norse
- Waterworks, 5, 6
- Wattle, 13, 51, 83
- Weaving artefacts, 33, 34, 39, 45, 61, 68, 69, 70, 84–5
- Weir, 5
- Well, 11, 12, 16, 23, 25, 27, 31, 33, 35, 41, 53, 55, 57, 59, 65, 73, 76–7
 holy, 17, 30
- Wharf, 33
- Wheelhouse, 69
- Whetstone, 52, 68, 70
- Windmill, 5, 59
- Wood: *see* Timber
- World War I: battery, 58, 59
 sea defences, 58
- World War II: airfield, 10, 11
 armaments factory, 28
 army camp, 40
 battery, 58, 59, 60, 75
 disguised structure, 38
 hut, 18, 37
 naval base, 60
 pillbox, 5, 38–40
 sea defences, 58
 structure, 24, 38, 40, 58, 60, 70, 79
 submarine netting, 60

DISCOVERY AND EXCAVATION IN SCOTLAND

LOCAL AUTHORITY

Site Name

Parish

Name of Contributor(s)

Type of Site or Find

NGR (2 letters, 6 figures)

Report:

Sponsor(s): HS, Society, Institution, Developer, etc. (where appropriate)

.....

Address(es) of Main Contributor(s)

.....

.....

Please send to: Hon. Editor, *Discovery and Excavation in Scotland*, CSA, c/o Royal Museum of Scotland, Chambers Street, EDINBURGH EH1 1JF



THE COUNCIL FOR SCOTTISH ARCHAEOLOGY promotes informed opinion on the study and conservation of Scotland's archaeological heritage, and brings together individuals, societies and organisations in order to do so. The CSA works by:

- » advancing the **education and involvement** of the public in Scotland's archaeological heritage
- » encouraging the better **identification and conservation** of material evidence of past human activity in Scotland
- » pressing for improved policies for the **preservation, management and interpretation** of Scotland's past
- » facilitating **liaison** between statutory bodies, archaeological societies, other groups and organisations, and the general public

**Supporting the Council for Scottish Archaeology will help
secure Scotland's past for the future**

The Council for Scottish Archaeology
c/o Royal Museum of Scotland
Chambers Street
EDINBURGH EH1 1JF
Tel. 0131-225-7534
E.mail: CSA@dial.pipex.com



"The Council for Scottish Archaeology are right to keep reminding us that protecting the environment is not just about things that live above the ground. It is also about preserving the rich archaeological heritage hidden underneath the ground. We need to interpret our past to understand our present to control our future." (Rob Edwards, *Edinburgh Evening News*)

"To think that you are the first person to hold an object since it was lost or thrown away, many hundreds of years ago, can be quite awe-inspiring." (Jill Harden, CSA)

The Council for Scottish Archaeology exists to help people from all walks of life to play a valuable role in increasing our knowledge of the past, and in protecting our archaeological legacy for the benefit of future generations.

JOIN NOW AND HELP SECURE SCOTLAND'S PAST FOR THE FUTURE

As a Member of CSA you will:

- » receive our regular newsletter *Scottish Archaeological News*
- » be sent a free copy of *Discovery and Excavation in Scotland*, the only annual round-up of new fieldwork
- » gain access to CSA's information service aimed at helping answer your questions about Scotland's archaeology
- » add your voice to CSA's campaign for improved policies and resources to *care for the past*

Membership forms are available from:

The Council for Scottish Archaeology
c/o Royal Museum of Scotland
Chambers Street
EDINBURGH EH1 1JF
Tel. 0131-225-7534
E.mail: CSA@dial.pipex.com