

Reproduced from the Ordnance Survey mapping with the permission of the Controller of Her Majesty's Stationery Office.

Crown Copyright.

Unauthorised reproduction infringes Crown Copyright and may lead to prosecution or civil proceedings.

Cornwall County Council 100019590, 2004.

*[Figure caption]*

*[Figure caption]*

Reproduced from the Ordnance Survey mapping with the permission of the Controller of Her Majesty's Stationery Office.

Crown Copyright.

Unauthorised reproduction infringes Crown Copyright and may lead to prosecution or civil proceedings.

Cornwall County Council 100019590, 2004.

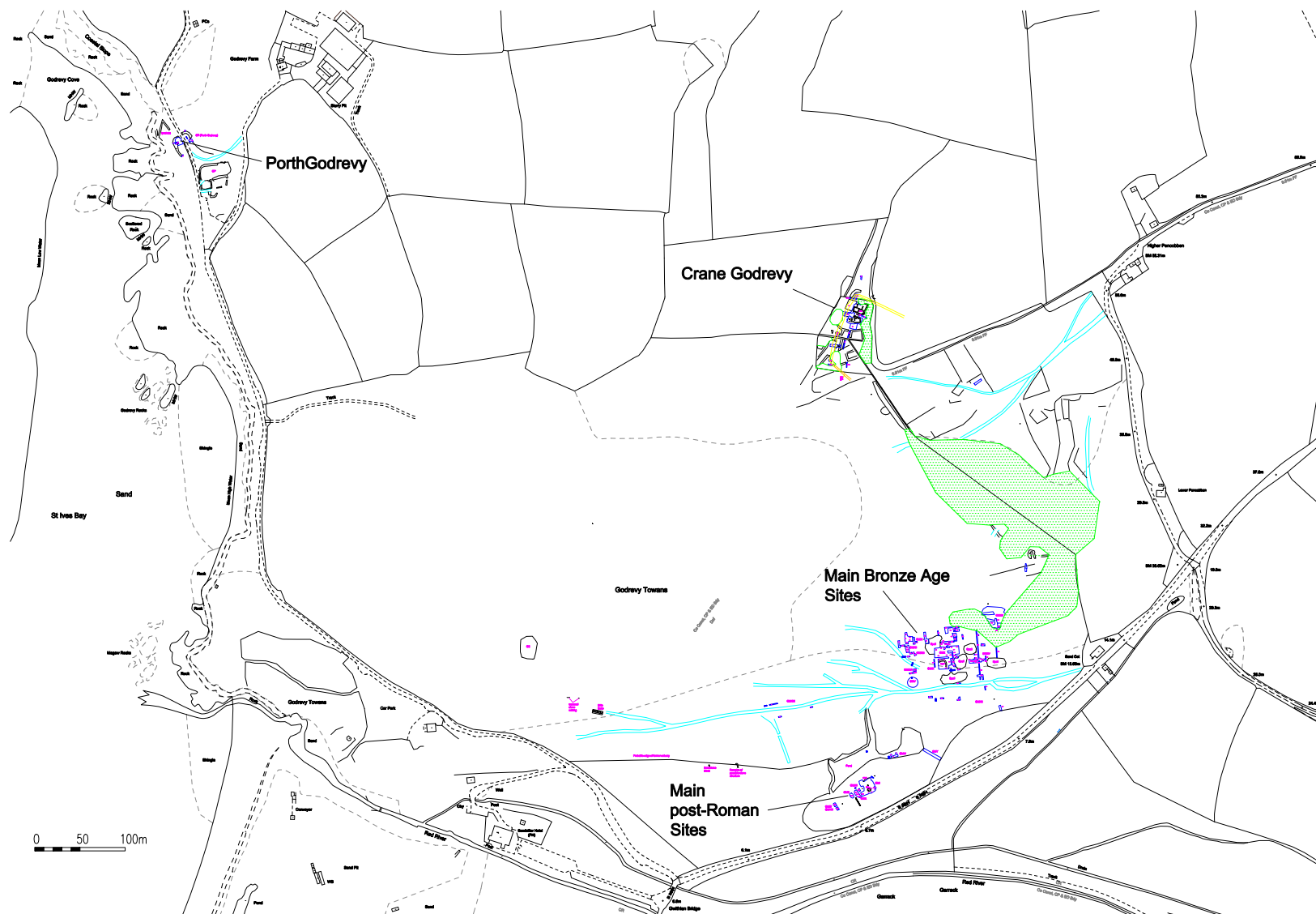


Figure 2: Location Map (Total Station survey carried out in 2005 overlying OS Landline)

Reproduced from the Ordnance Survey mapping with the permission of the Controller of Her Majesty's Stationery Office.

Crown Copyright.

Unauthorised reproduction infringes Crown Copyright and may lead to prosecution or civil proceedings.

Cornwall County Council 100019590, 2007.



