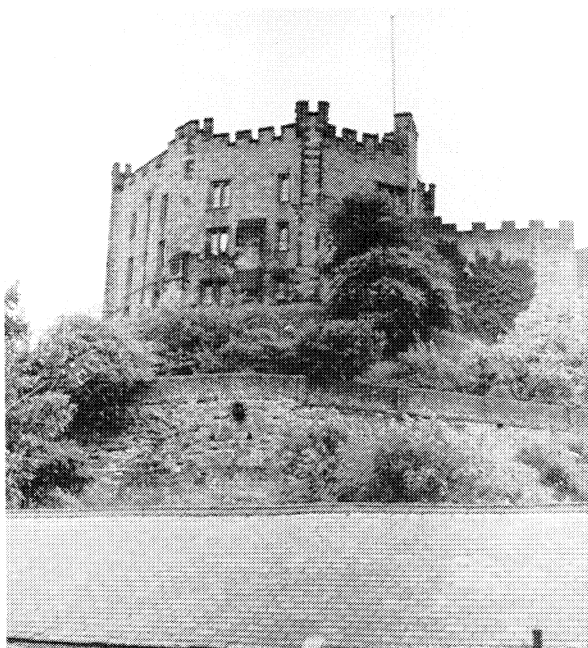
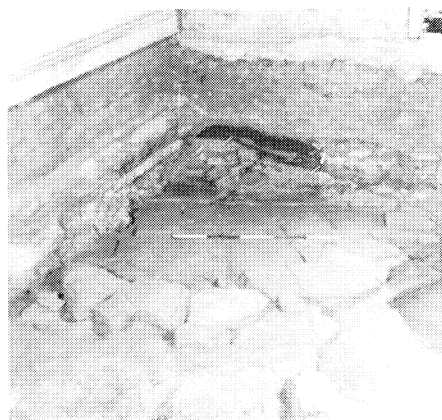


# PLATE I

- A. Keep of Durham Castle and Chemise Wall, looking south west from the Saddler Street Site over the Judo Hall roof.

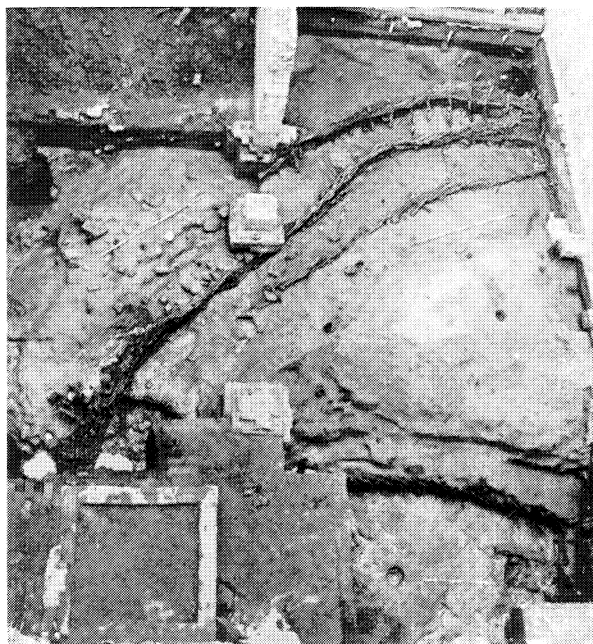


- B. Site A: Revetment wall (23)



- C. Site C: Floor of House (F103) within Judo Hall looking north east

- D. Site D: from east during excavation House (S1) *below right*, Fences F58, F21, F22 crossing the site over earlier storm drain, S14, *above*

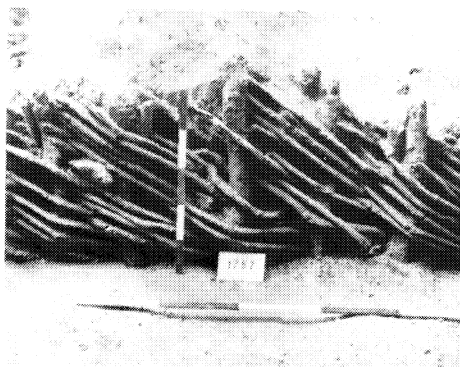


*Phh.: M. O. H. Carver*

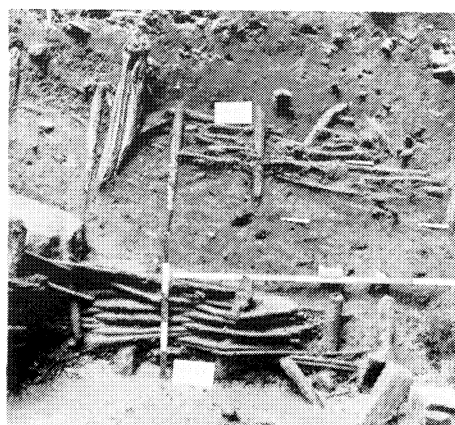
PLATE II



A. Site D: House S1, from east. Hearth, *below left*.  
Support-post-sockets either side of scale.  
Fragmentary west wall of building S2, *above*



B. Site D: West wall of S1, detail



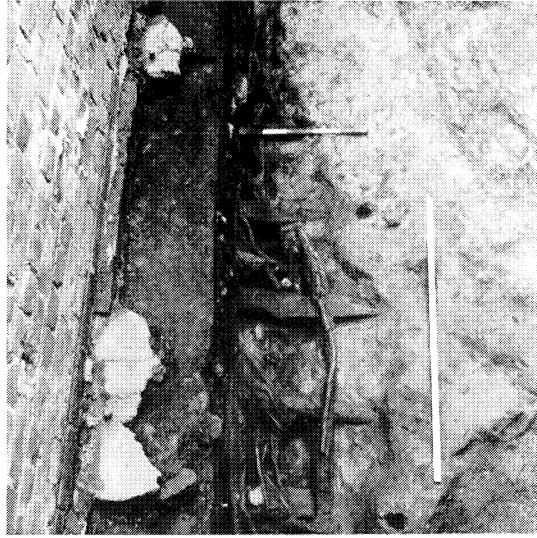
C. Site D: North wall of S1 (1789), with burnt  
north wall of S4 (1711) *above*

*Phh.: M. O. H. Carver*

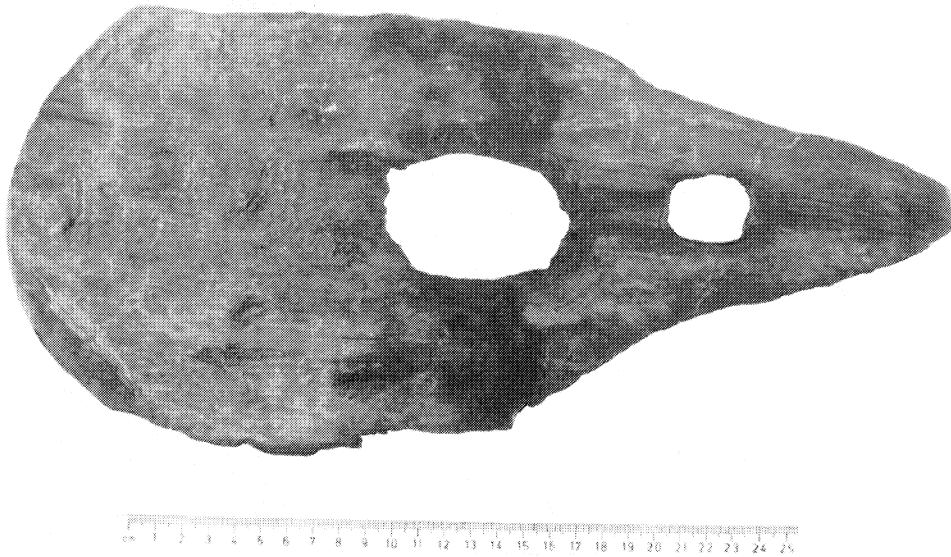
PLATE III



A. Site D: Lined Rubbish pit F35 from east



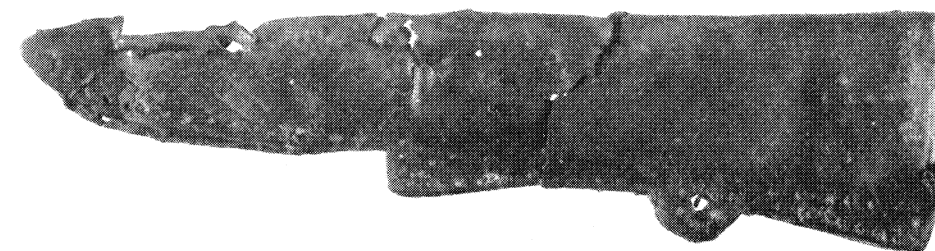
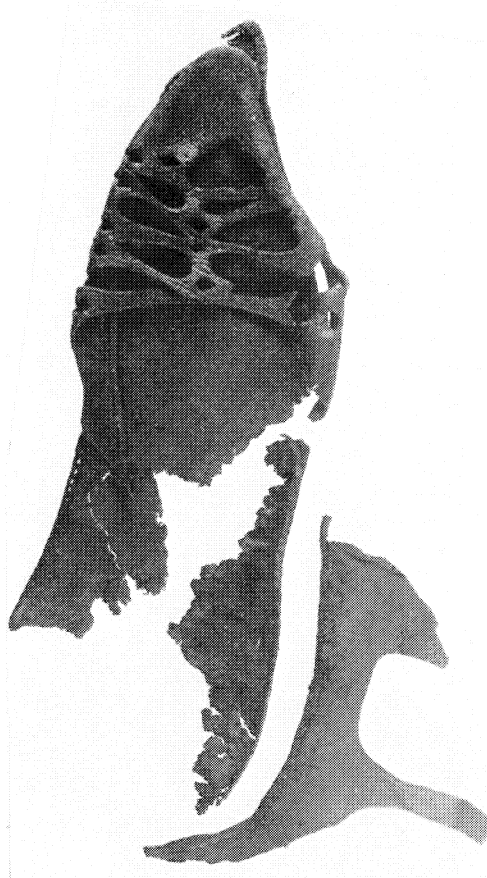
B. Site D: Boundary fence F27 from east.  
Modern (brick) property boundary between 62  
and 63 Saddler Street *above*



C. Oak shingle: (SF 168) Suspension hole, *right*; the secondary hole made after deposition by a stake, which  
has passed through the burning left by a rafter, *centre*

*Phh.: A, B, M. O. H. Carver  
C, T. Middlemass*

# PLATE IV



## 11th-century Leather Artifacts:

A. Slipper (SF192)

B. Sandal (SF190)

C. Sheath (SF177)

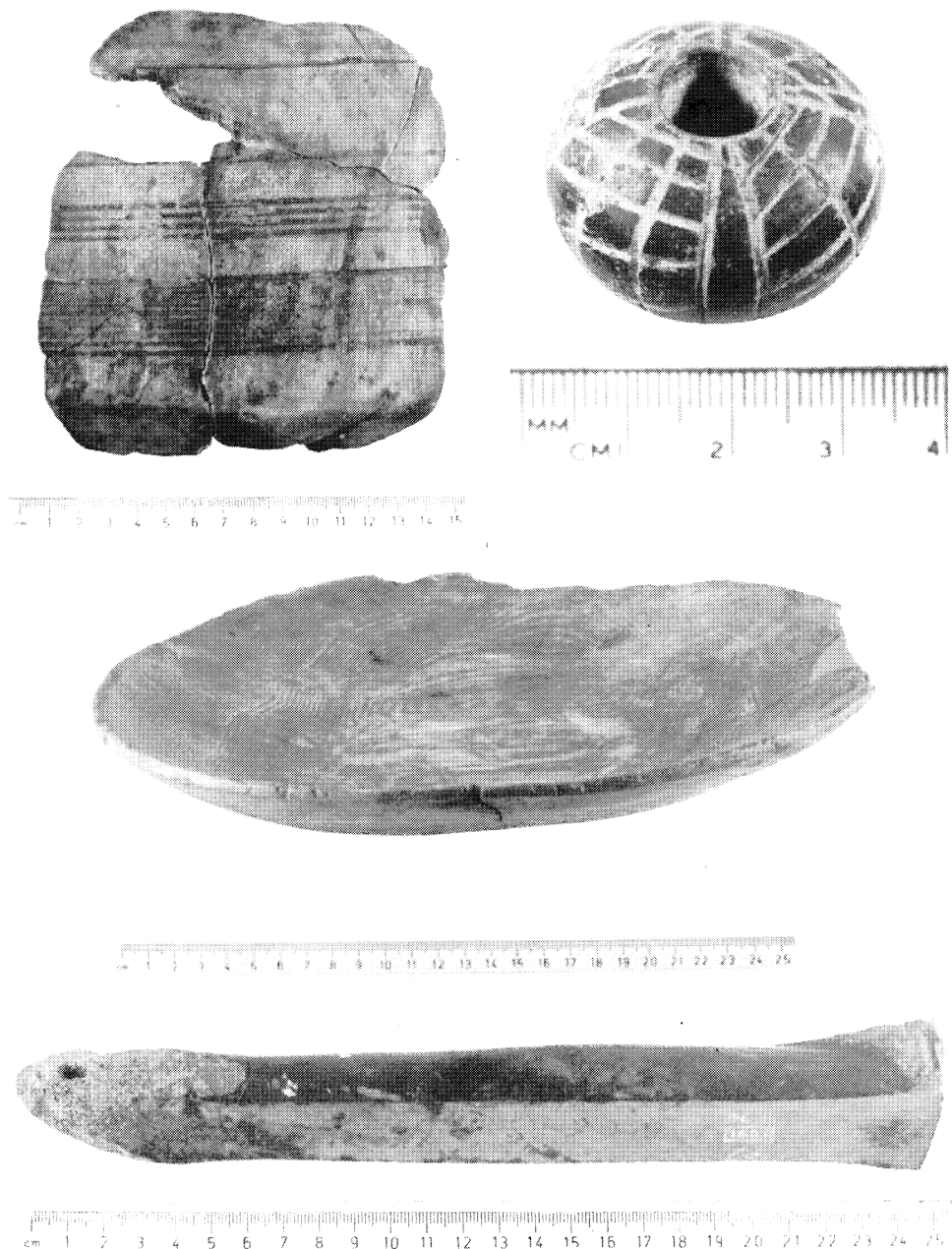
*Phh.: T. Middlemass*

MEDIEVAL ARCHAEOLOGY, XXIII (1979)

EARLY MEDIEVAL SITE IN DURHAM



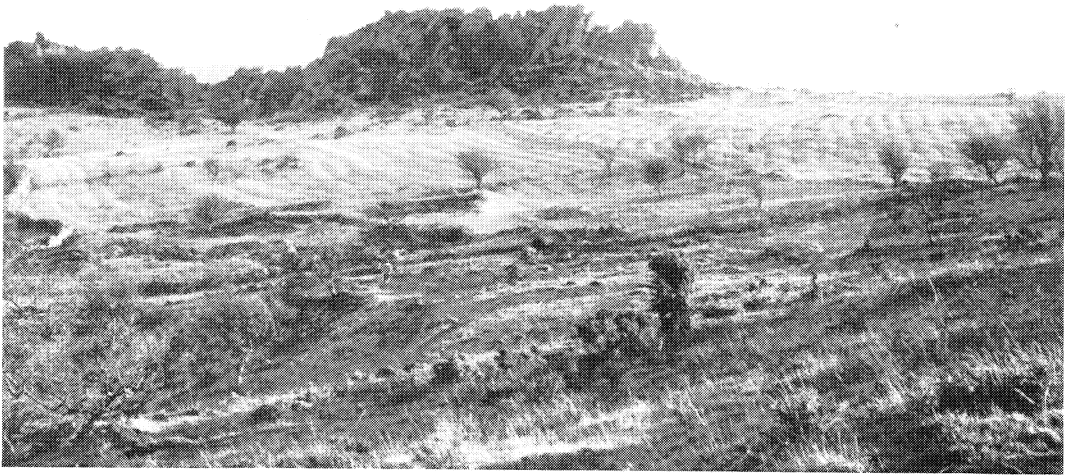
PLATE V



A. Decorated Wooden bowl (SF139)  
B. Spindle whorl (SF111)

C. Wooden platter (SF136)  
D. Bone skate (SF70)

PLATE VI



A. HOUNDTOR VILLAGE, OPEN FIELDS and Greater Rocks looking SE. The site of the Village lies to the left of the photograph

*Ph.: G. Beresford*



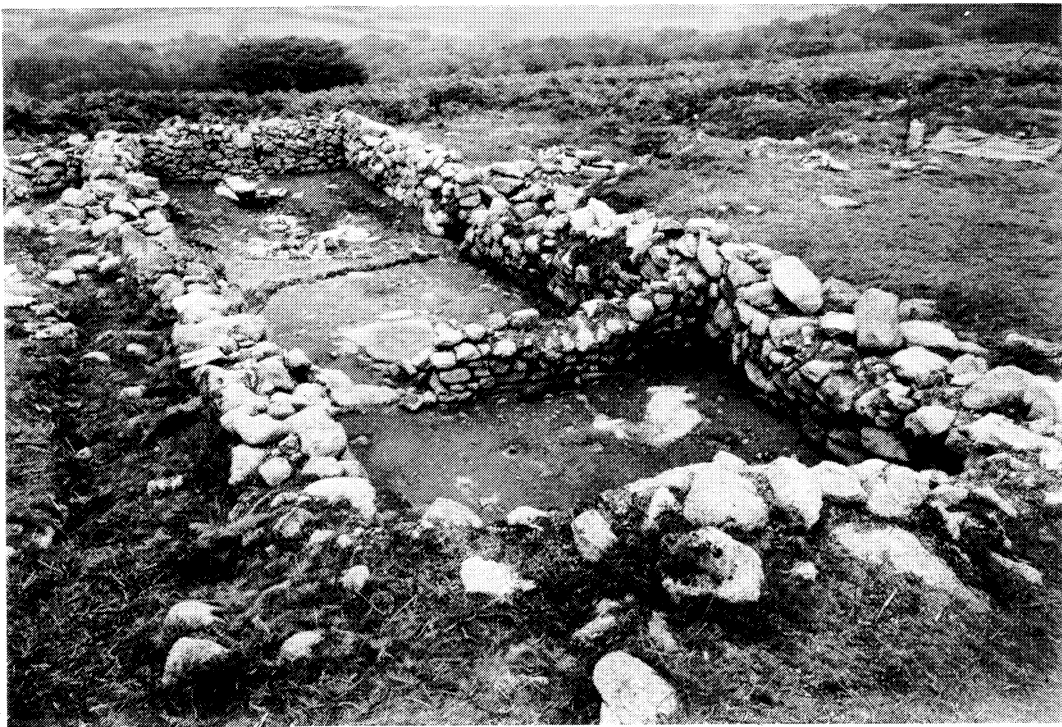
B. HUTHOLES VILLAGE, Manor Site (House 3), SW. corner looking W. Lines of stake-holes of superimposed turf-walled buildings before complete excavation

*Ph.: E. Minter*

PLATE VII



A. HOUNDTOR VILLAGE, House 1, looking NE



B. HOUNDTOR VILLAGE, Manor Site (House 3), looking NE

PLATE VIII



A. HUTHOLES VILLAGE, House 1, looking NW

*Ph.: E. Minter*



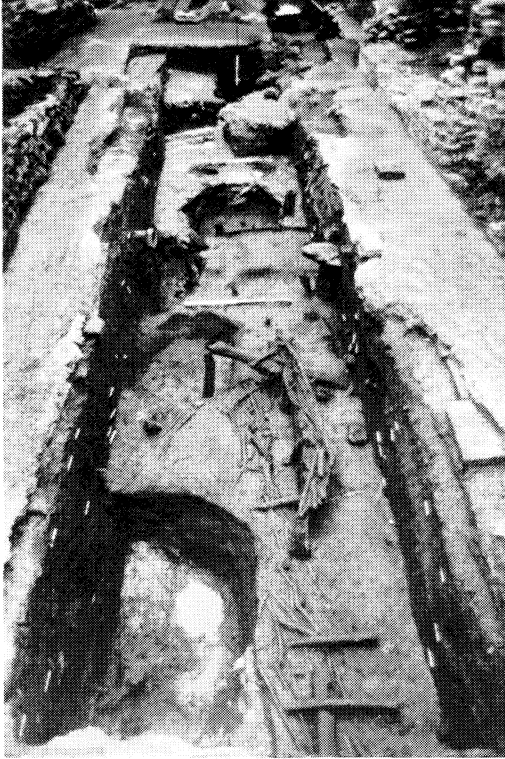
B. HOUNDTOR VILLAGE, Barn 3. Comdryer looking SW. Drying-kiln on left and oven on right.  
Cf. Fig. 24

MEDIEVAL ARCHAEOLOGY, XXIII (1979)

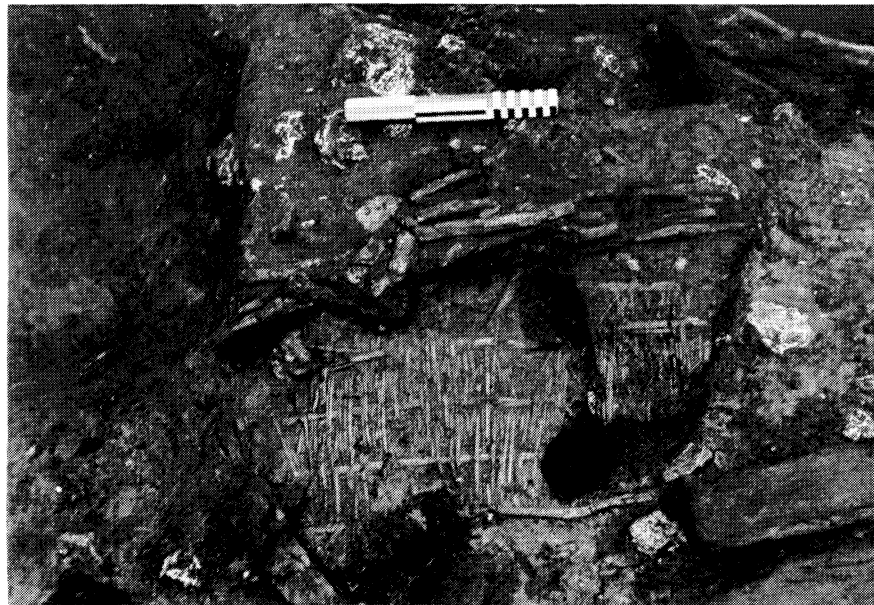
*Ph.: G. Beresford*  
BERESFORD, DARTMOOR



PLATE IX



A. 1 WESTGATE STREET, GLOUCESTER.  
General view N. of 9th-century levels



B. 1 WESTGATE STREET, GLOUCESTER.  
View E. of ivy matting, Period 4.  
9th century



PLATE X

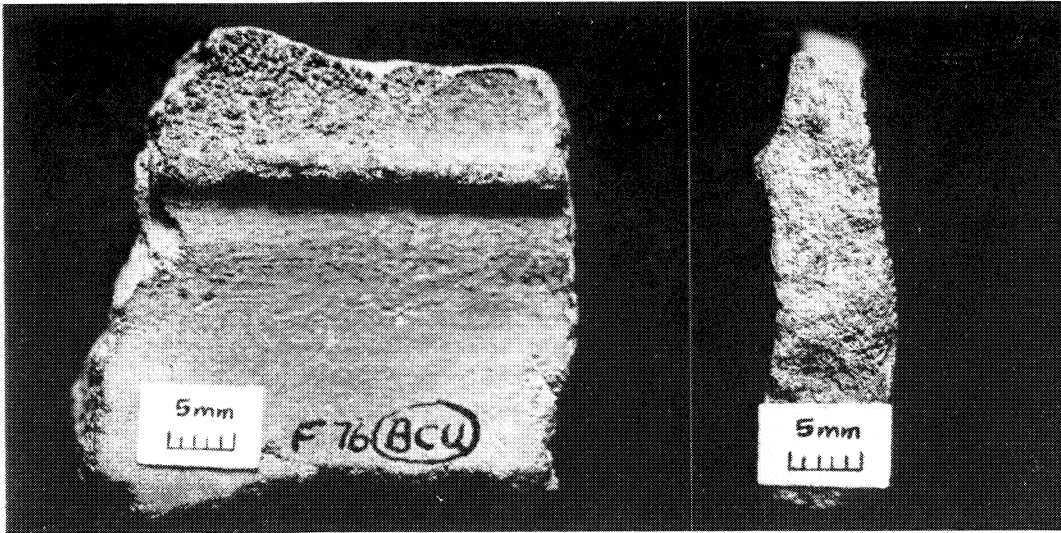


A. ST PAUL-IN-THE-BAIL, LINCOLN.  
Cist grave in earliest church, partially excavated,  
looking W.



B. ST PAUL-IN-THE-BAIL, LINCOLN.  
Hanging-bowl *in situ* at W. end of cist grave

PLATE XI



A. LINCOLN, EARLY ISLAMIC POTTERY FROM FLAXENGATE



B. LINCOLN, EARLY ISLAMIC POTTERY FROM FLAXENGATE

PLATE XII



A. ST PAUL IN THE BAIL, LINCOLN. General view of the excavations showing 13th-century and earlier footings from NW



B. MACHRINS,  
COLONSAY,  
STRATHCLYDE,  
Oval slab-lined grave

Phh.: A, *Lincoln Archaeological Trust*  
B, *Crown copyright, R.C.A.M. Scotland*

# THE SOCIETY FOR MEDIEVAL ARCHAEOLOGY

## MONOGRAPH SERIES

A series of monographs dealing with particular aspects of the archaeology of the British Isles between A.D. 400 and 1600.

1. G. Bersu and D. M. Wilson, *Three Viking Graves in the Isle of Man* (1966), price £4.50 (£3.50).
2. F. W. B. Charles, *Medieval Cruck-building and its Derivatives* (1967), out of print.
3. P. A. Rahtz, *Excavations at King John's Hunting Lodge, Writtle, Essex, 1955-57* (1969), price £4.50 (£3.50).
4. Audrey L. Meaney and Sonia Chadwick Hawkes, *Two Anglo-Saxon Cemeteries at Winnall, Winchester, Hampshire* (1970), price £3 (£2).
5. H. E. Jean Le Patourel, *The Moated Sites of Yorkshire* (1974), price £5 (£4).
6. G. T. M. Beresford, *The Medieval Clay-land Village: Excavations at Goltho and Barton Blount* (1975), price £4.50 (£3.50).
7. Helen Clarke and Alan Carter, *Excavations in King's Lynn, 1963-1970* (1977), price £12.50 (£10).
8. J. G. Hurst, *Excavations at Wharram Percy, N. Yorks., 1950-1960* (1979), price £7 (£6).

Subscribers to the whole series, whether members of the Society or not, are entitled to each monograph at the lower price (in brackets).

**Obtainable from Mrs A. F. Morley, 6 Church Grove, Little Chalfont, Amersham, Bucks. HP6 6SH**

It is hoped that future titles will include: C. M. Mahany *et al.*, *Excavations in Stamford, Lincs.*; P. Mayes, *Kilns at Chilvers Coton, Nuneaton*; C. D. Morris, *Excavations at Brough of Deerness*.

# MEDIEVAL ARCHAEOLOGY

VOLUME XXIII, 1979

M. O. H. CARVER	Page
Three Saxo-Norman tenements in Durham City . . . . .	I
HILARY MURRAY	
Documentary evidence for domestic buildings in Ireland c.400-1200 in the light of archaeology . . . . .	81
GUY BERESFORD	
Three deserted medieval settlements on Dartmoor: a report on the late E. Marie Minter's excavations . . . . .	98
C. M. HEIGHWAY, A. P. GARROD AND A. G. VINCE	
Excavations at 1 Westgate Street, Gloucester, 1975 . . . . .	159
NOTES AND NEWS	
The Anglo-Saxon church at St Paul-in-the-Bail, Lincoln (Brian Gilmour); Early Islamic Pottery from Flaxengate, Lincoln (Lauren Adams); Dark Age tree-ring dates, A.D. 490-850 (D. J. Schove); The chapel at Harlowbury, Harlow, Essex (Cecil A. Hewett and H. M. Taylor); 14 St Paul's Street, Stamford (D. A. H. Richmond and R. F. Taylor); Medieval Logboats (Sean McGrail and Roy Switsur); The Welsh Medieval Pottery Research Group; The London Kiln Study Group; The Poitiers Conference, 1979 (James Graham-Campbell) . . . . .	214
MEDIEVAL BRITAIN IN 1978	
I. Pre-Conquest: compiled by Leslie E. Webster . . . . .	234
II. Post-Conquest: compiled by John Cherry . . . . .	248
REVIEWS:	
Peter Brandon (ed.), <i>The South Saxons</i> (C. J. Arnold); Kaj Borg, Vij Näsman and Erik Wegraeus (eds.), <i>Eketorp, fortification and settlement on Öland/Sweden</i> . <i>The Monument</i> (Helen Clarke); Thorkild Ramskor, <i>Lindholm Høje. Gravpladsen</i> and Michael Müller-Wille, <i>Das wikingerzeitliche Gräberfeld von Thumby- Bienebek (Kr. Rendsburg-Eckernförde)</i> (J. A. Graham-Campbell); Christian Rauch and Hans Jörg Jacobi, <i>Die Ausgrabungen in der Königspfalz Ingelheim 1909-1914</i> (R. D. H. Gem); David A. Hinton, <i>Alfred's Kingdom, Wessex and the South 800-1500</i> (Laurence Keen); F. A. Aberg (ed.), <i>Medieval Moated Sites</i> (Colin Platt); R. A. Butlin (ed.), <i>The Development of the Irish Town</i> (Robin Glasscock); Jan Baart and others, <i>Opgravingen in Amsterdam: 20 jaar stadkernonderzoek</i> (John Cherry); J. Kenneth Major, <i>Animal-powered Engines</i> (S. E. Rigold) . . . . .	279
ACCOUNTS OF THE SOCIETY, 1978 . . . . .	292
LIST OF OFFICERS AND COMMITTEES OF THE SOCIETY, 1979 . . . . .	296