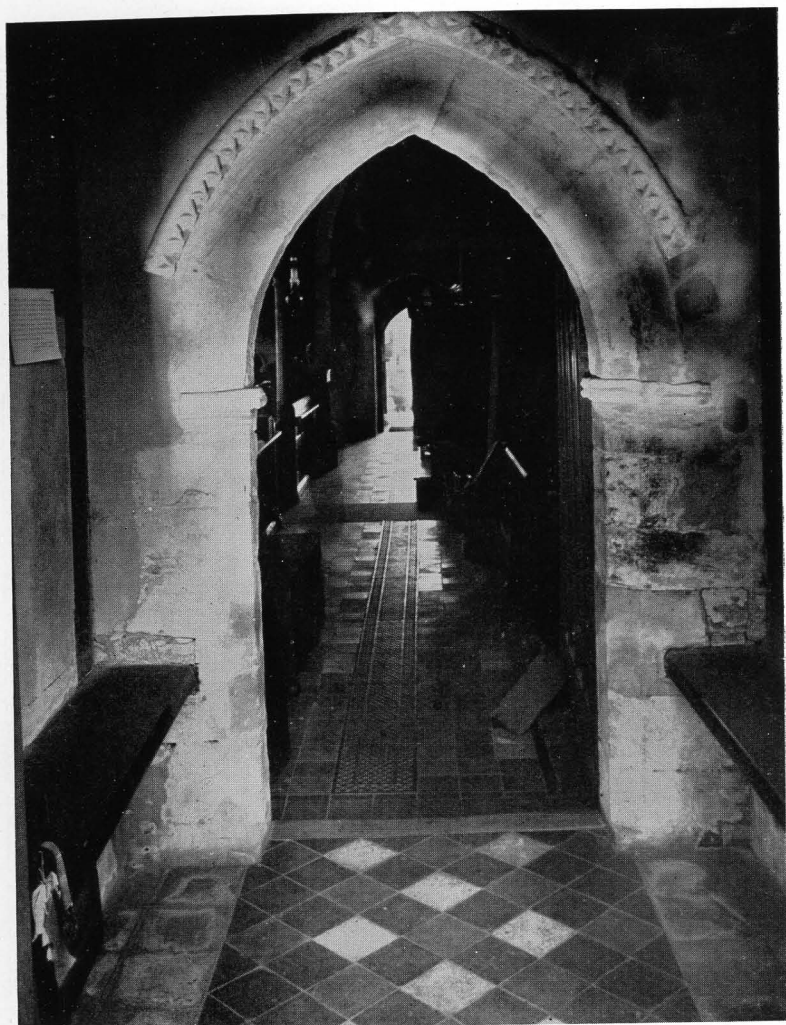


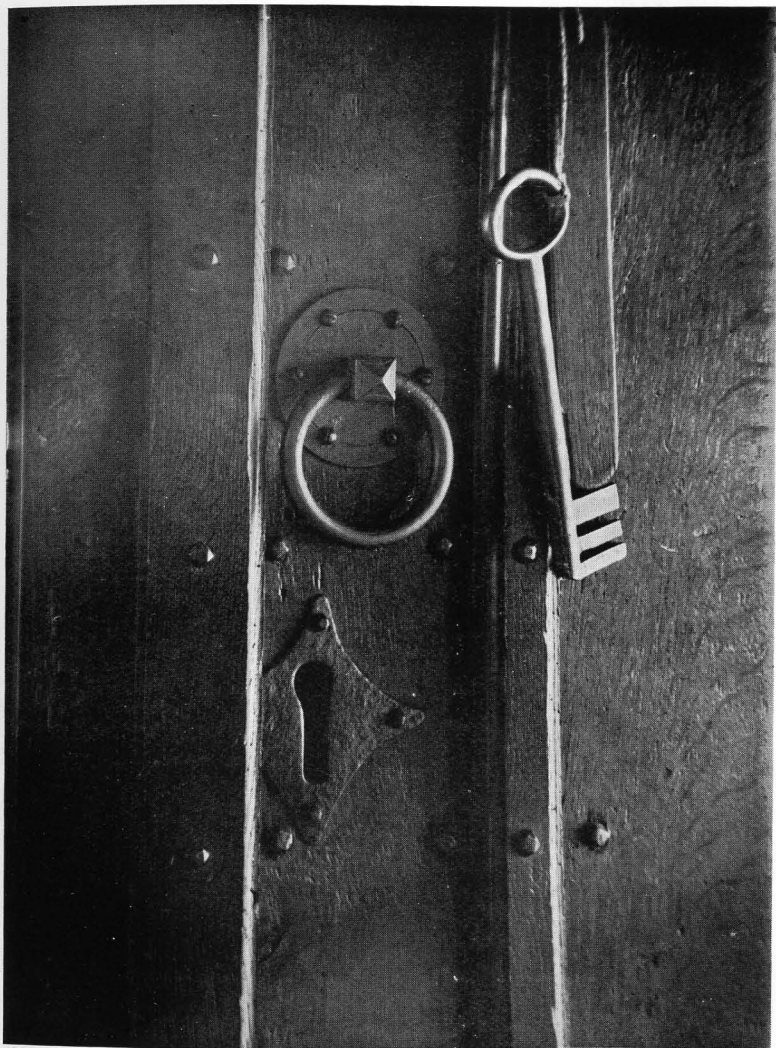
[From a Photograph by Marcus Adams.]

I. SILCHESTER CHURCH from the South, shewing end of Farm House. South Porch is modern.



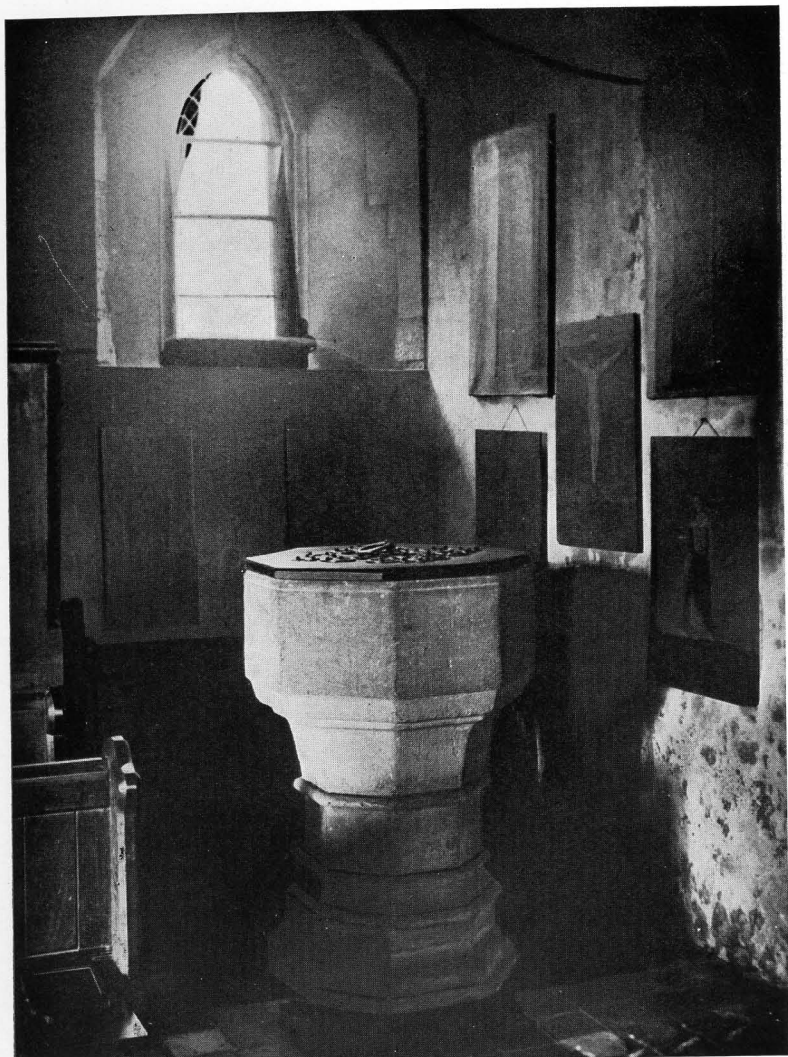
[From a Photograph by Marcus Adams.]

2. NORTH DOOR, shewing the Dog-tooth (Thirteenth Century) Mouldings.  
View looking through the Church to the South Door.



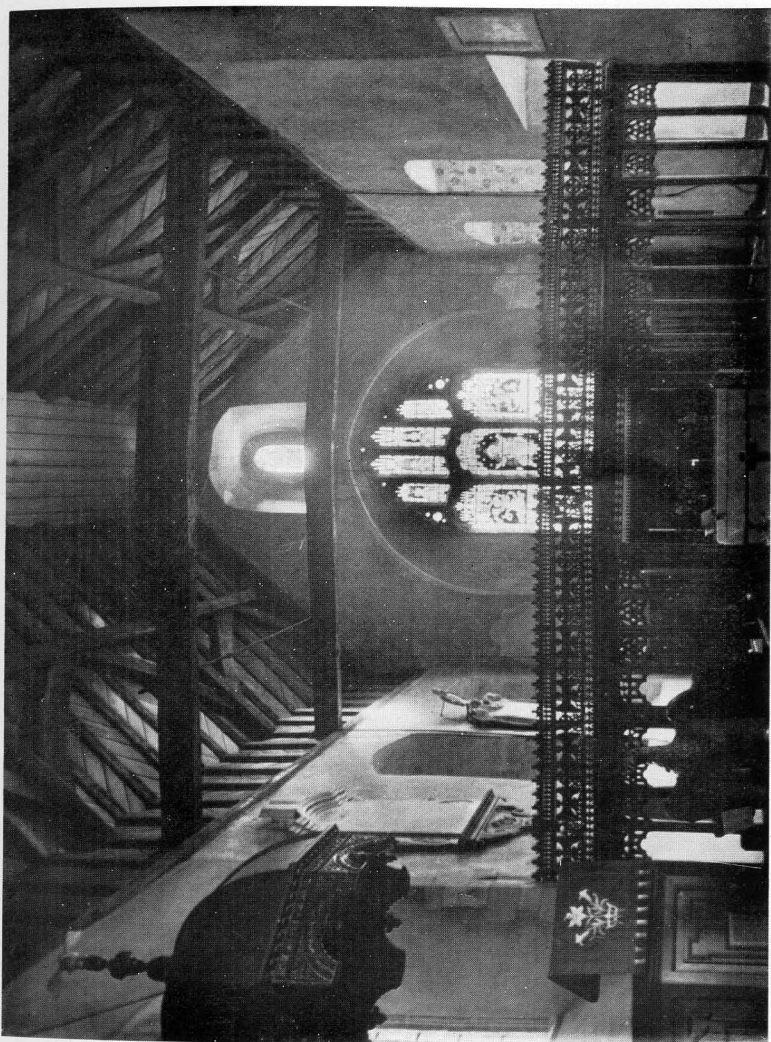
[From a Photograph by Marcus Adams.

3. CHURCH KEY. Nine inches long; has touch hole. Legend says it was filled with powder and fired. May be the original Key. Good iron Blocks. North Door is Thirteenth Century.



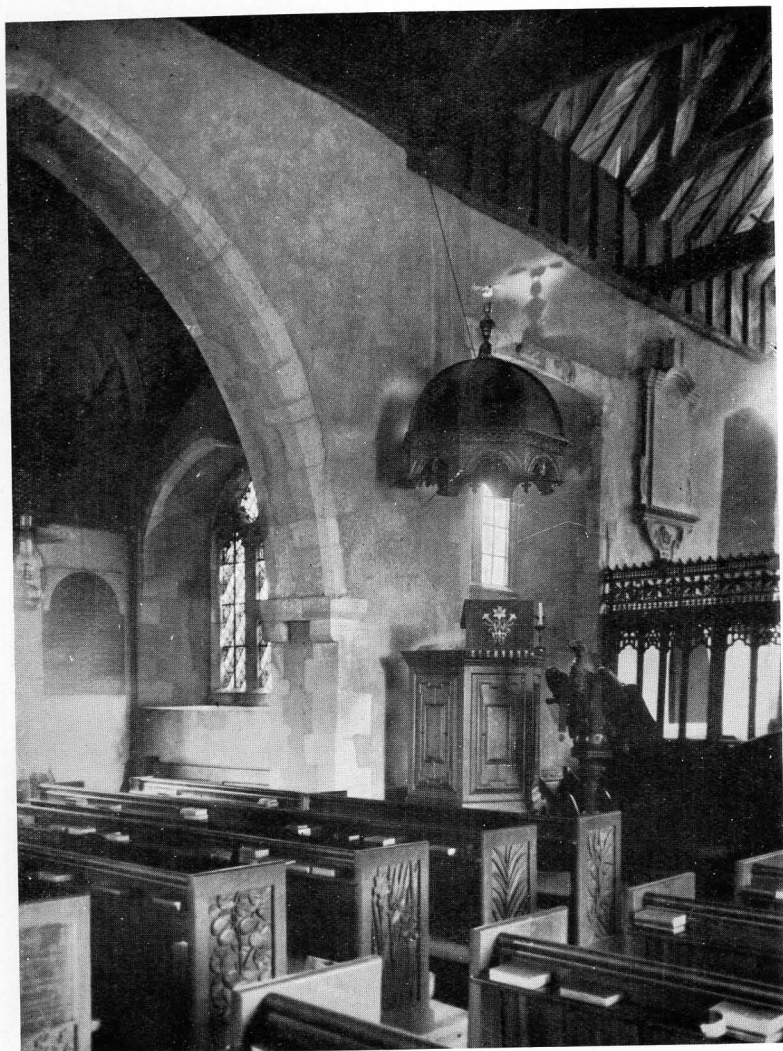
[From a Photograph by Marcus Adams.

4. FONT (Fifteenth Century). WINDOW (Fourteenth Century). The PANELS on the North Wall used to be in the Reredos and were painted by the Rev. Joyce, Rector of Stratfield Saye.



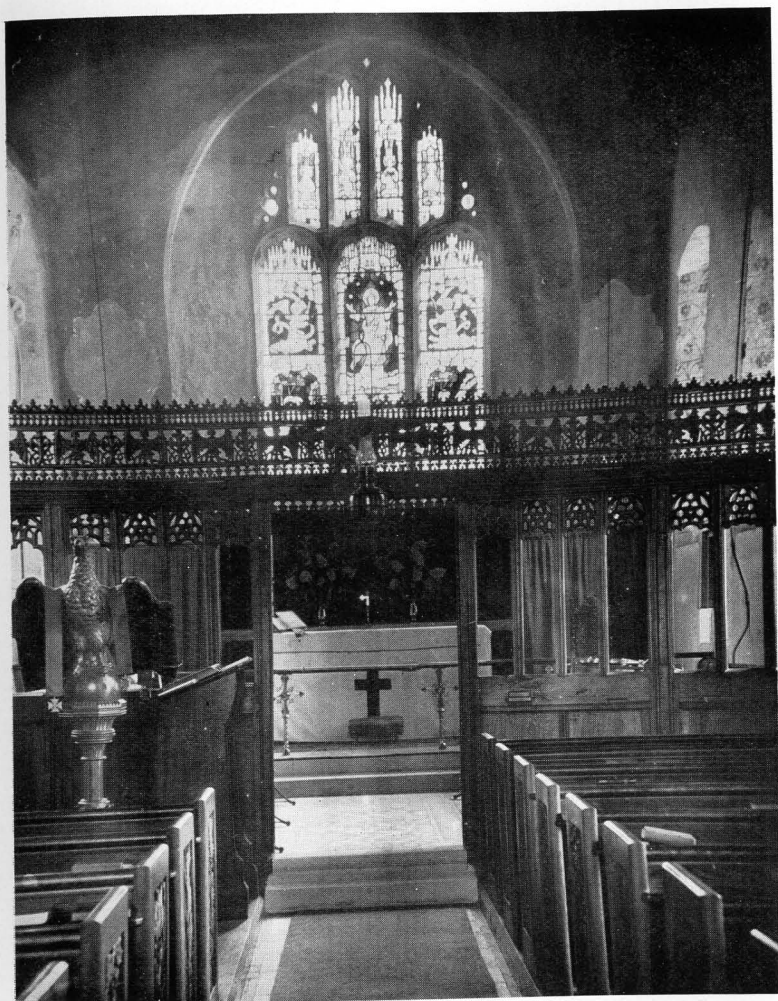
[From a Photograph by Marcus Adams.

5. VIEW OF SCREEN (Fifteenth Century) AND EAST WINDOW. The upper window was opened out at the restoration in 1872, the glass being put in by the Hon. Rev. W. T. W. Fiennes. There used to be a white painted wooden Ceiling covering in the Beams and upper woodwork.



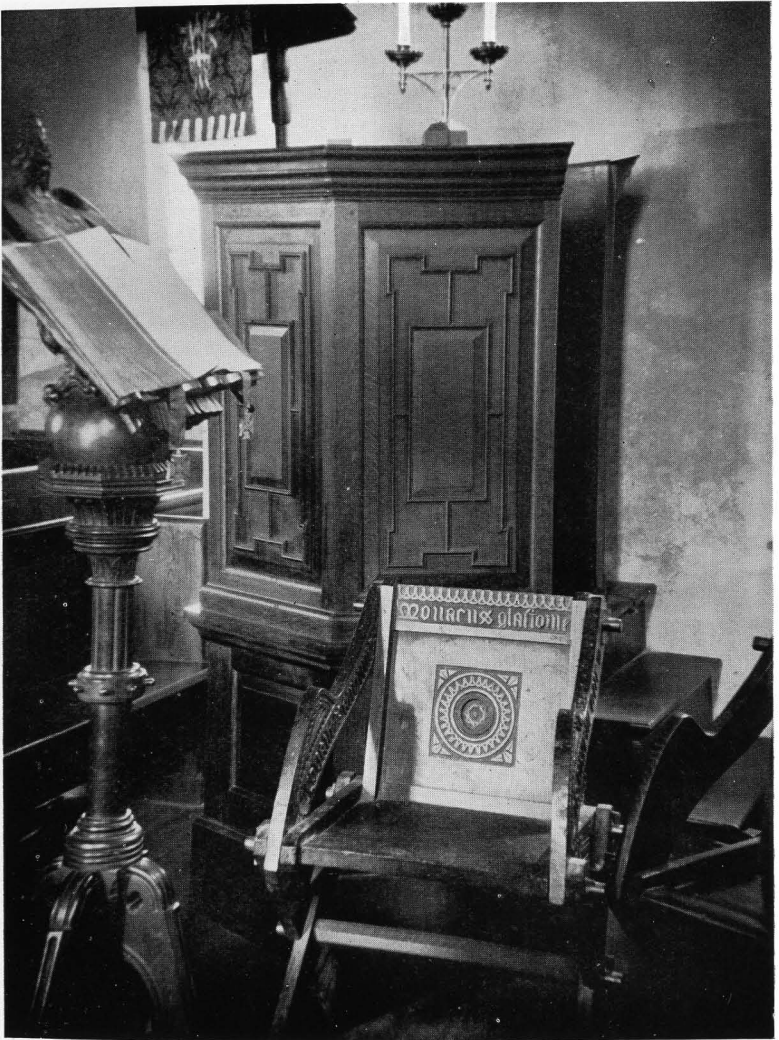
*[From a Photograph by Marcus Adams.]*

6. VIEW OF PULPIT (Seventeenth Century) WITH SOUNDING BOARD. This is inscribed : " Guifte of John Hore Gent 1639." The pew ends were carved by Henry and Ellen Sealey, in memory of her mother, Mary Newnham Davis



[From a Photograph by Marcus Adams.

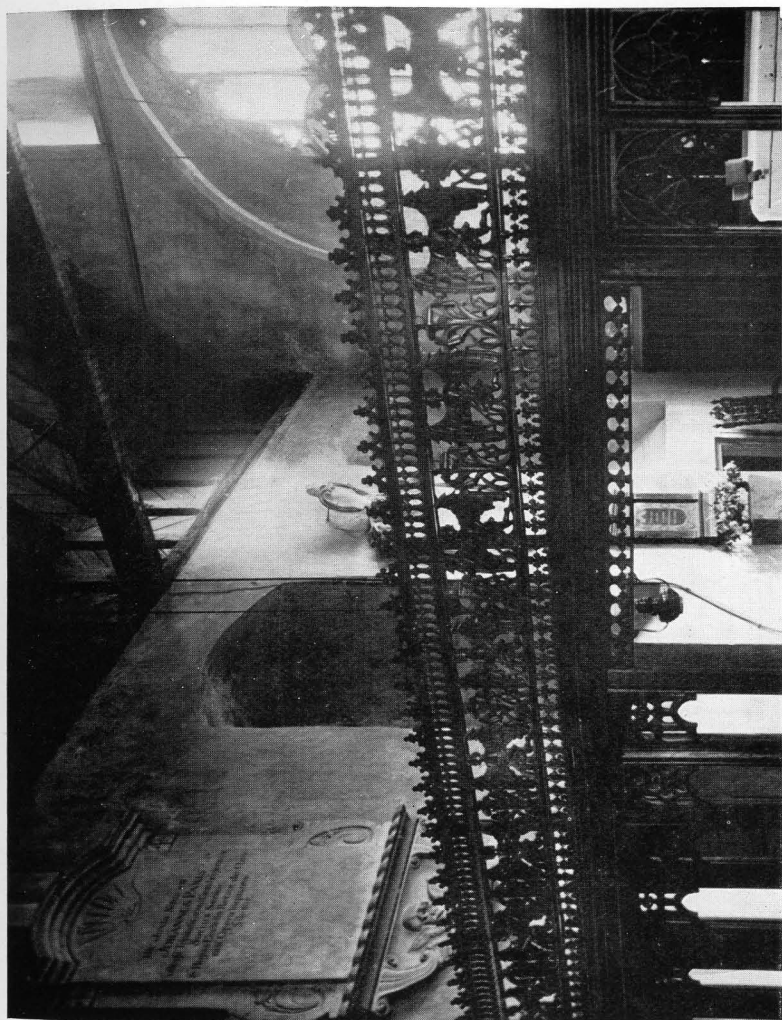
7. SCREEN AND EAST END. The Lectern was given by the late Lord Saye and Sele, and is Belgian.



[From a Photograph by Marcus Adams.

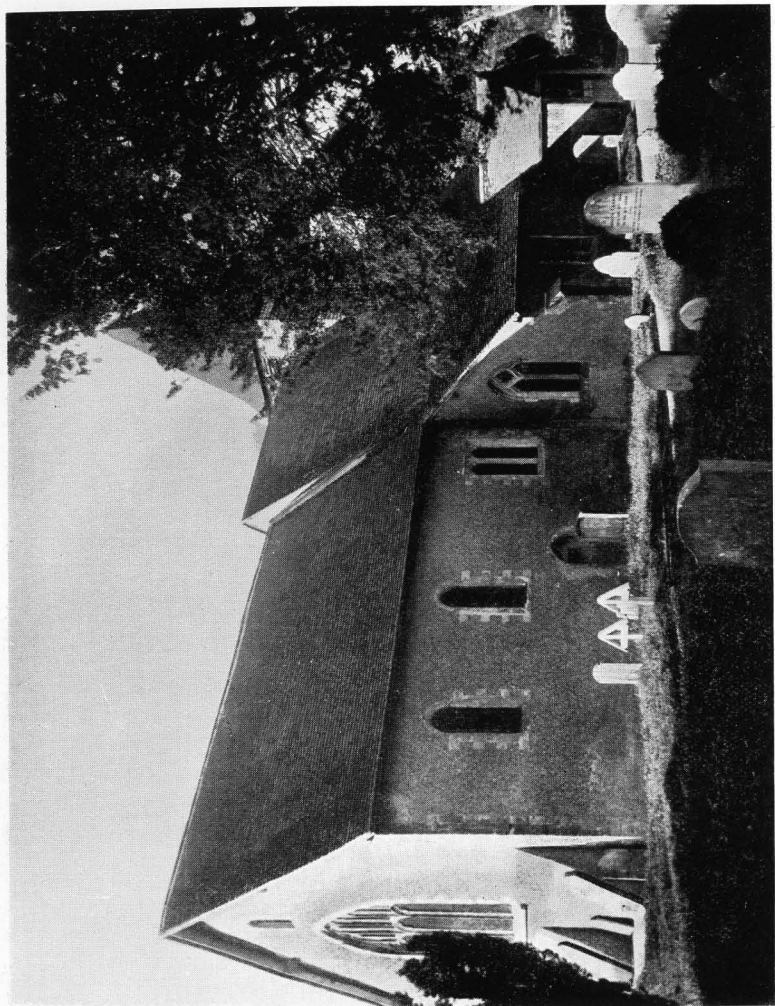
8. LECTERN AND PULPIT (Seventeenth Century). GLASTONBURY CHAIR given by the Rev. W. T. W. Fiennes. The Lectern (Belgian) given by Lord Saye and Sele.



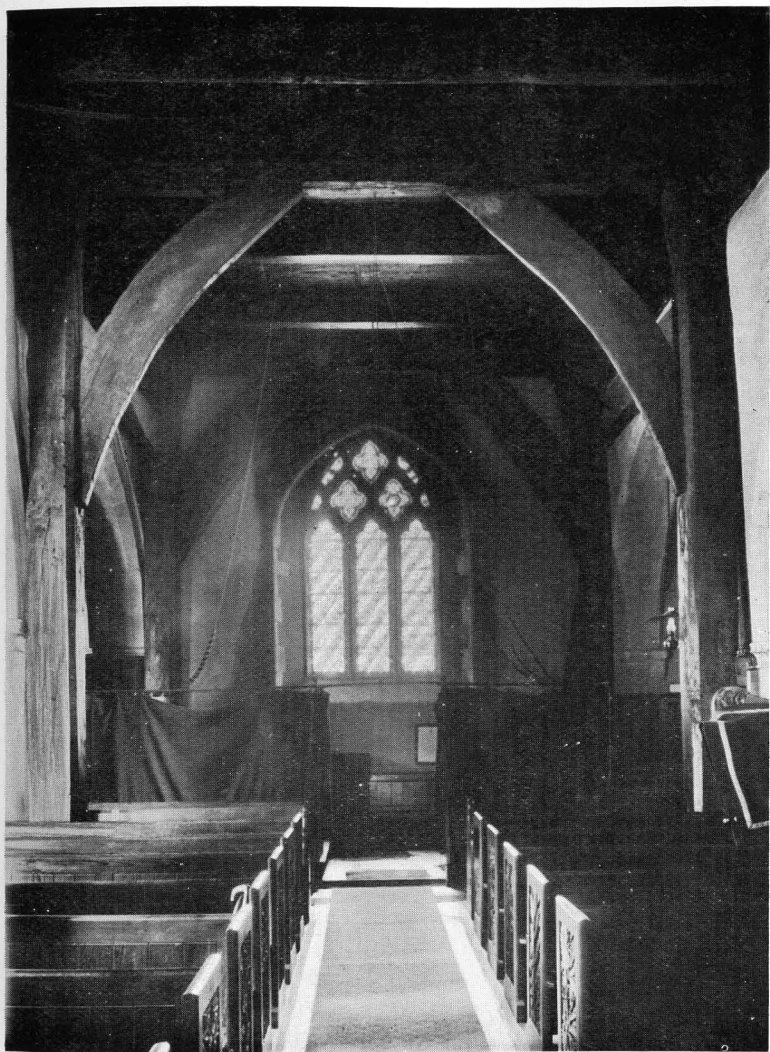


[From a Photograph by Marcus Adams.

9. SCREEN (Early Sixteenth Century) AND MONUMENT TO DOCTOR JOHN PARIS, Rector 1742.

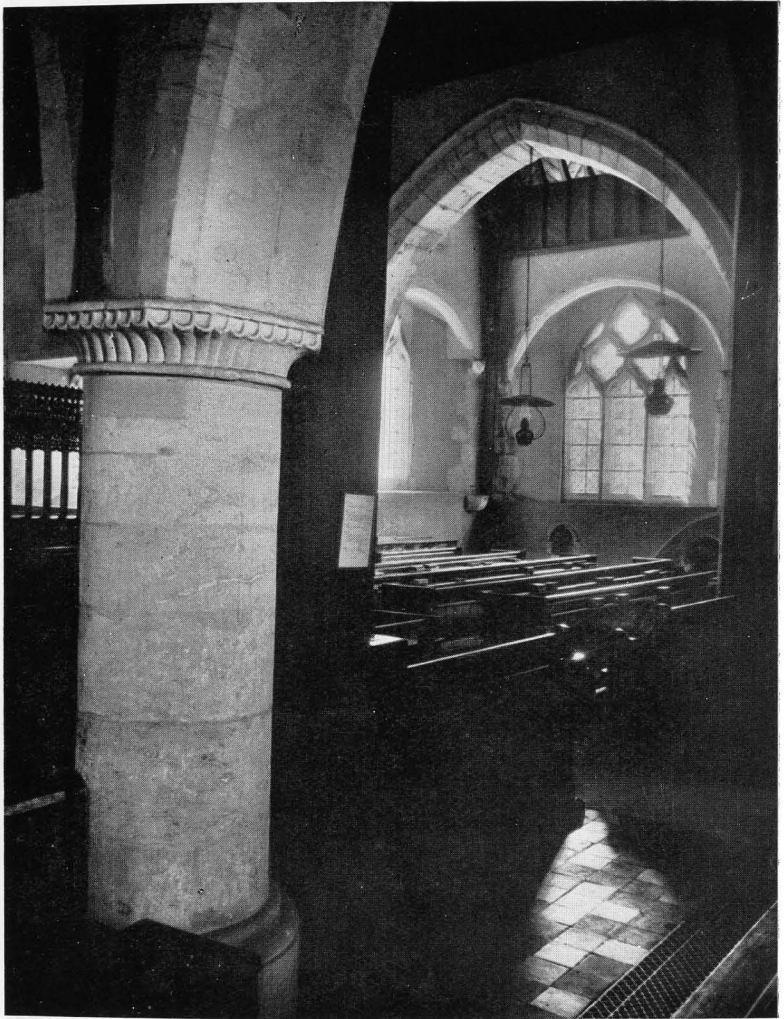


10. NORTH VIEW OF SILCHESTER CHURCH. Tombstones to the Rivers Family at the East end.  
[From a Photograph by Marcus Adams.]



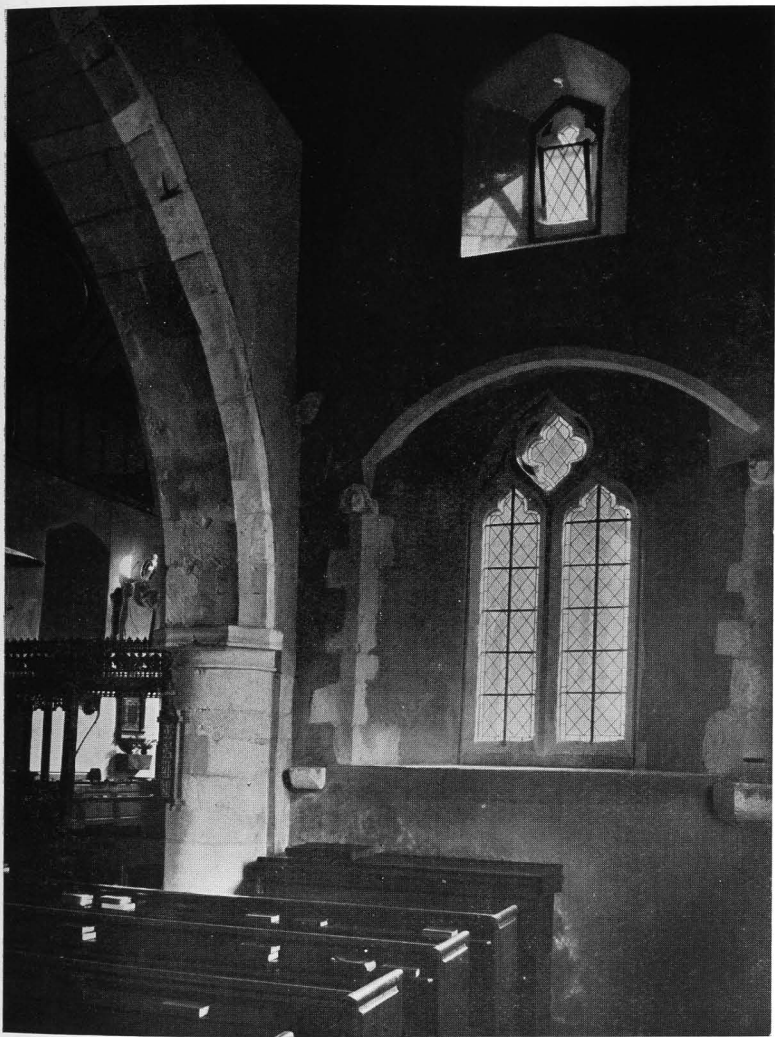
[From a Photograph by Marcus Adams.]

11. WEST WINDOW (Fourteenth Century). The massive timbers, called by Mr. Fiennes "Trees," used to support the Tower and Gallery which hid most of the window.



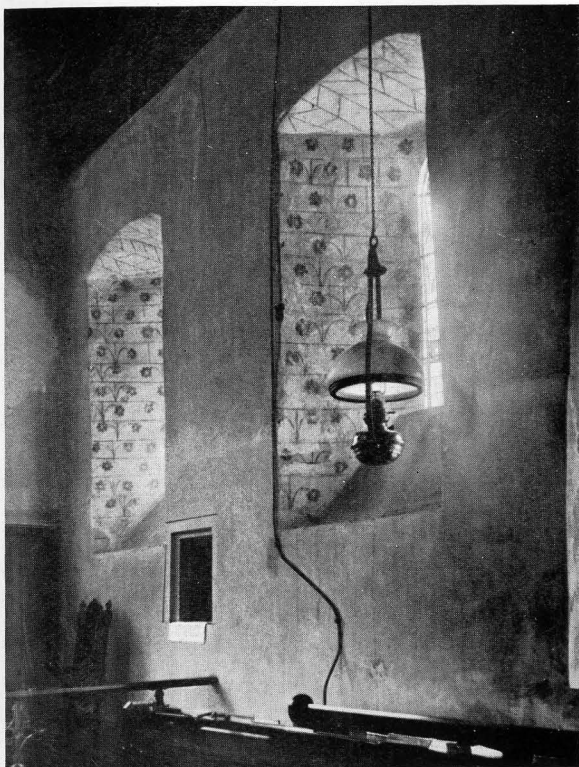
[From a Photograph by Marcus Adams.

12. EARLY ENGLISH PILLAR (Twelfth Century). SOUTH WINDOW AND PISCINA in South Aisle.



[From a Photograph by Marcus Adams.]

13. EAST WINDOW (Fourteenth Century) in South Aisle, which was probably a Chantry, shewing Corbels (Fourteenth Century).



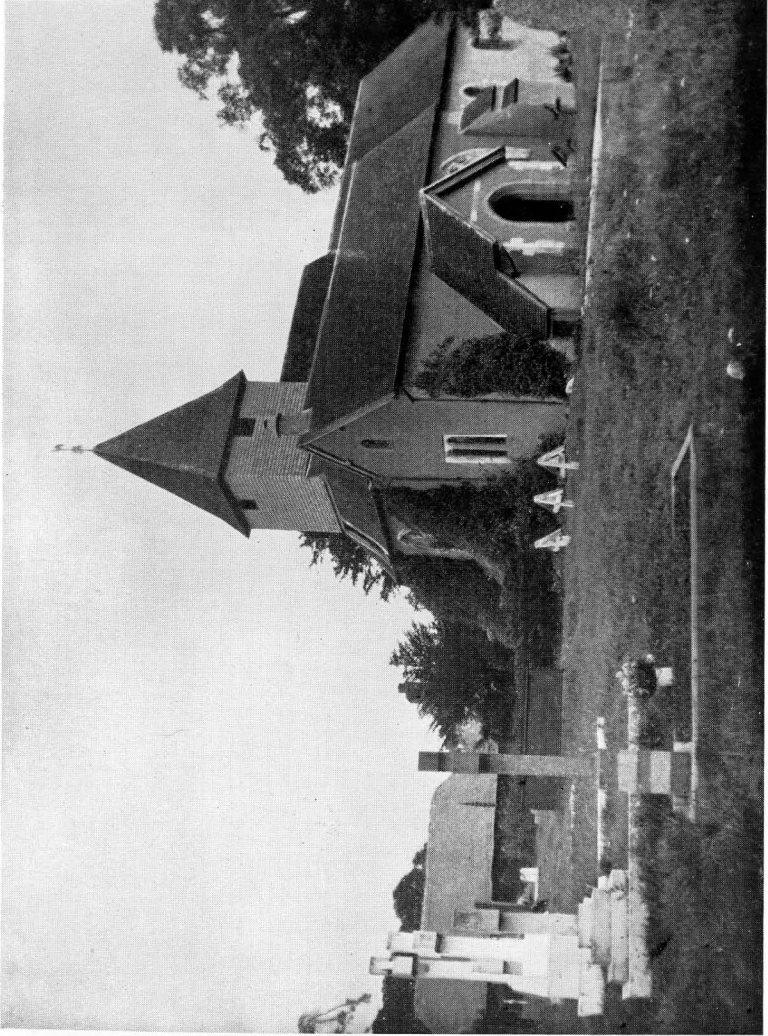
*[From a Photograph by Marcus Adams.]*

14. EARLY ENGLISH WINDOWS (Thirteenth Century) in the South side of the Chancel, shewing the Painting that was touched up at the restoration in 1872.



[From a Photograph by Marcus Adams.

15. SCREEN AND NAVE from the Choir (Early Sixteenth Century). There is no Chancel Arch.



[From a Photograph by Marcus Adams.

16. THE CHURCH from the South-West. South Porch is modern.





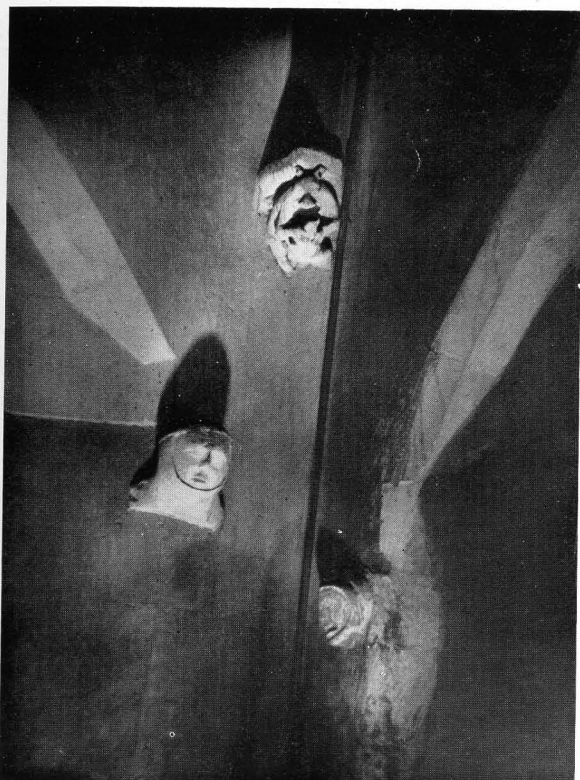
[From a Photograph by Marcus Adams.]

17. JACOBAN ALTAR TABLE.



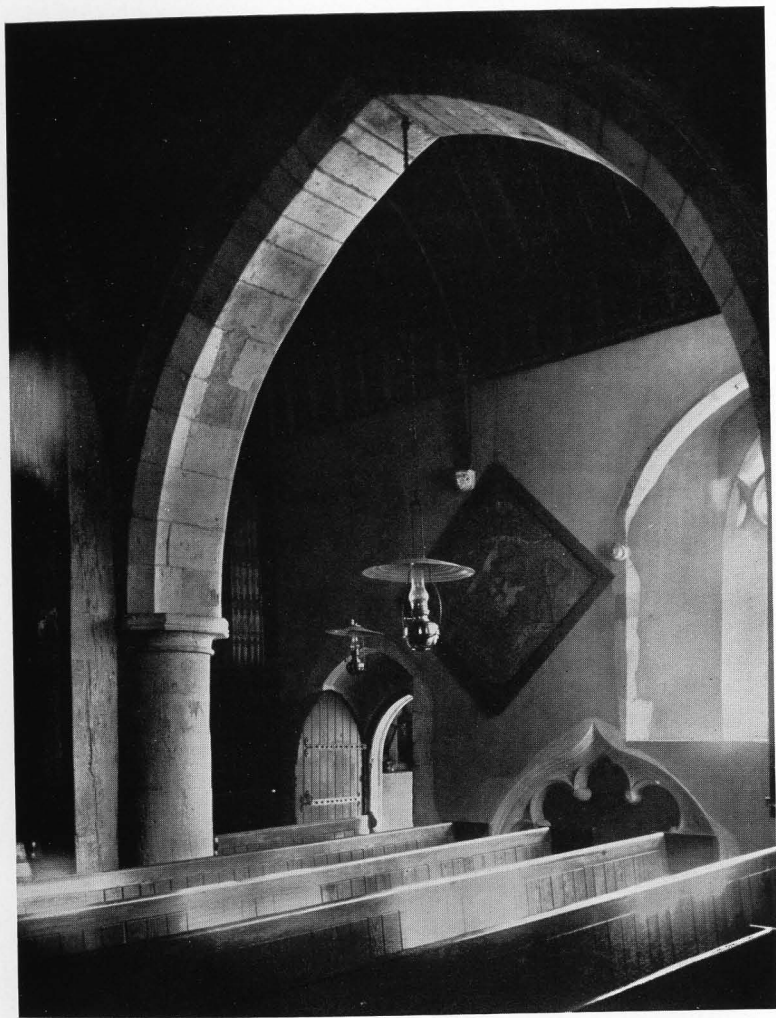
[From a Photograph by Marcus Adams.

18. RECESS AND ANCIENT CHAIR in the Sanctuary.



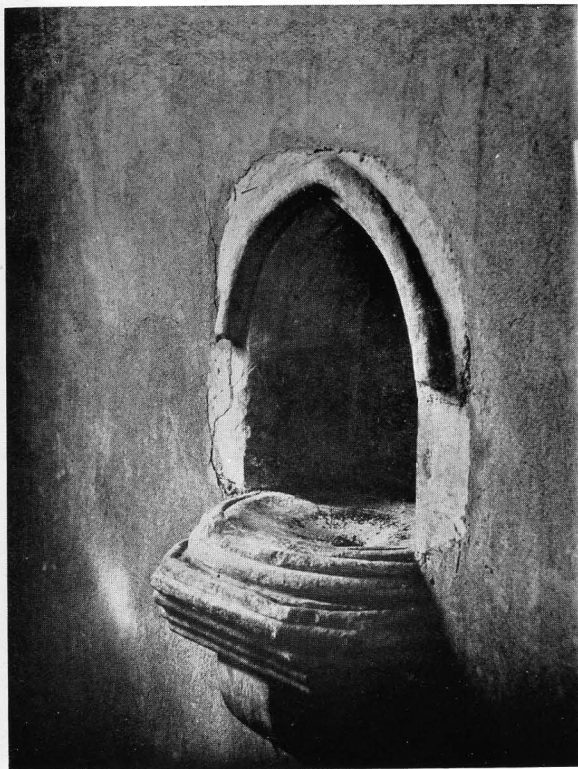
*[From a Photograph by Marcus Adams.]*

19. CORBELS (Fourteenth Century restored) above the East Window in the South Aisle.



[From a Photograph by Marcus Adams.

20. EARLY ENGLISH PILLAR, SOUTH DOOR (Thirteenth Century) AND MASSIVE OAK BEAMS. Hatchment—Elinor Lady Blessington, died 1769. Arms—"Stewart quartorius Boyle."



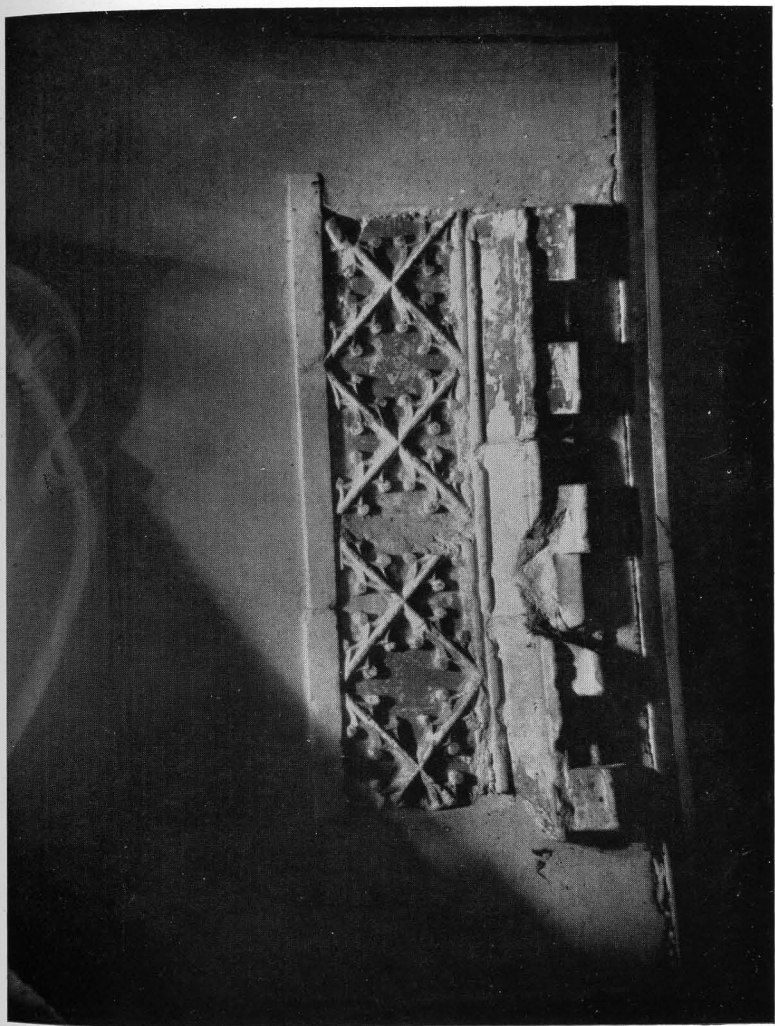
[From a Photograph by Marcus Adams.]

21. PISCINA in South Wall of South Aisle.



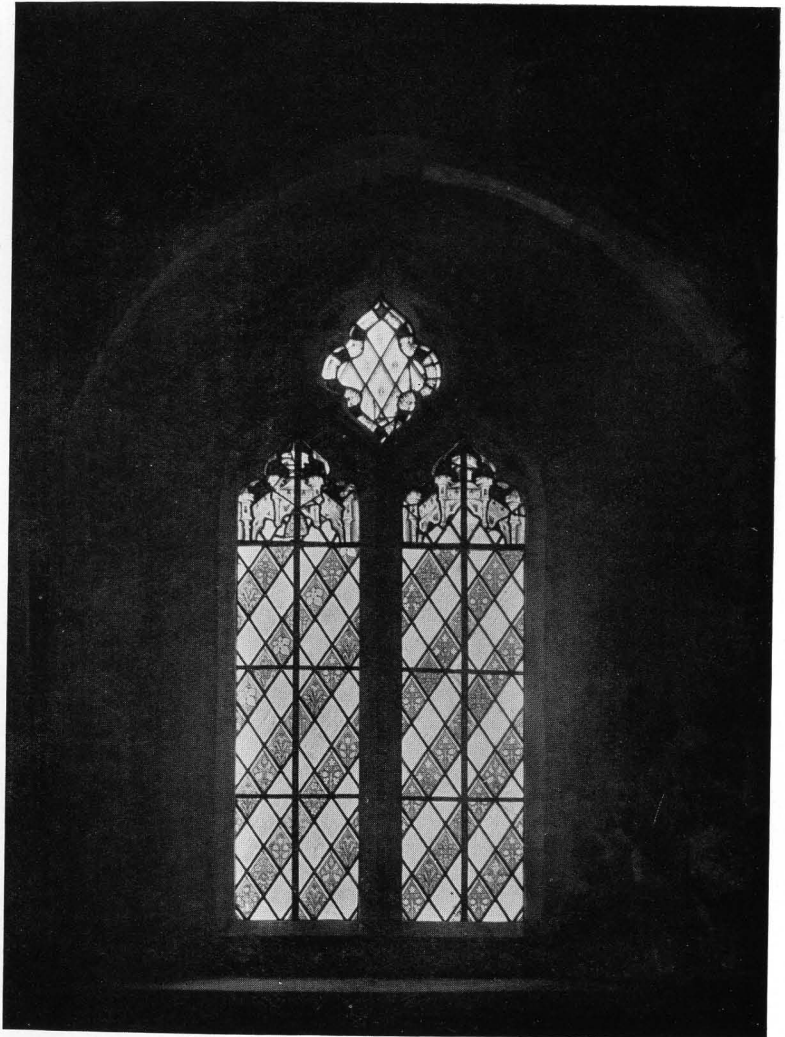
[From a Photograph by Marcus Adams.

22. STONE ELFIGY OF LADY IN WIMPLE AND VEIL; unidentified. It maybe of Margaret de Cusancia (*nee* Bluet), who married a William de Cusancia who died before 1319, leaving her with one child.



[From a Photograph by Marcus Adams.

23. FRAGMENT OF PANEL FRIEZE over South Door, found by Rev. W. T. W. Fiennes and placed here at the restoration. The Arms are Bluet, Cuzancy, and Baynard; the centre one is an "Elephant inverted."



[From a Photograph by Marcus Adams.]

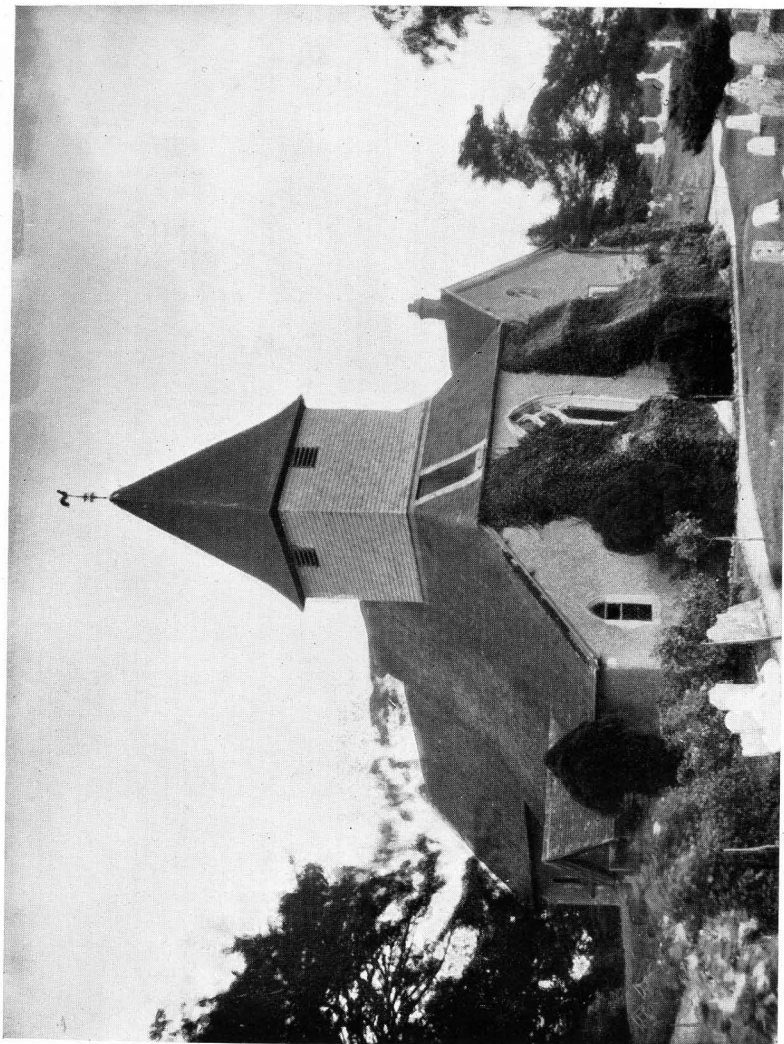
24. EAST WINDOW IN NORTH AISLE. The glass in the three upper lights is very old and very valuable.





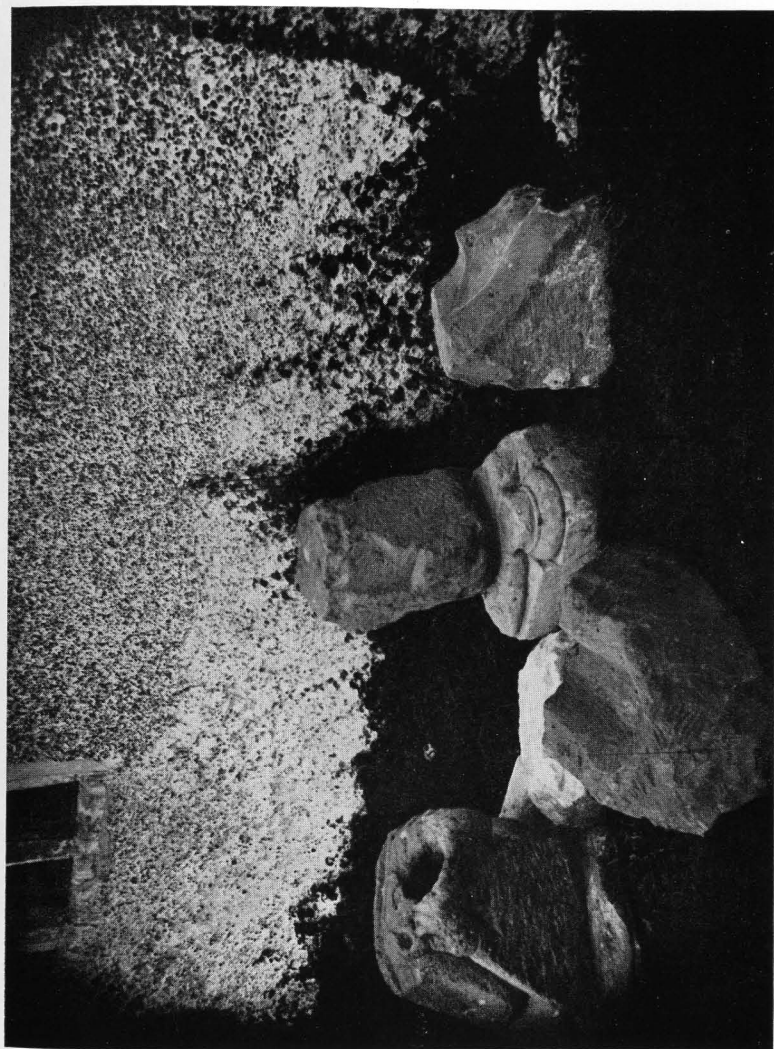
*[From a Photograph by Marcus Adams.]*

25. CORNER OF BOWL OF EARLY ENGLISH FONT in wall of South Porch. The shaft may be from Roman Temple. Placed in the wall at the restoration.

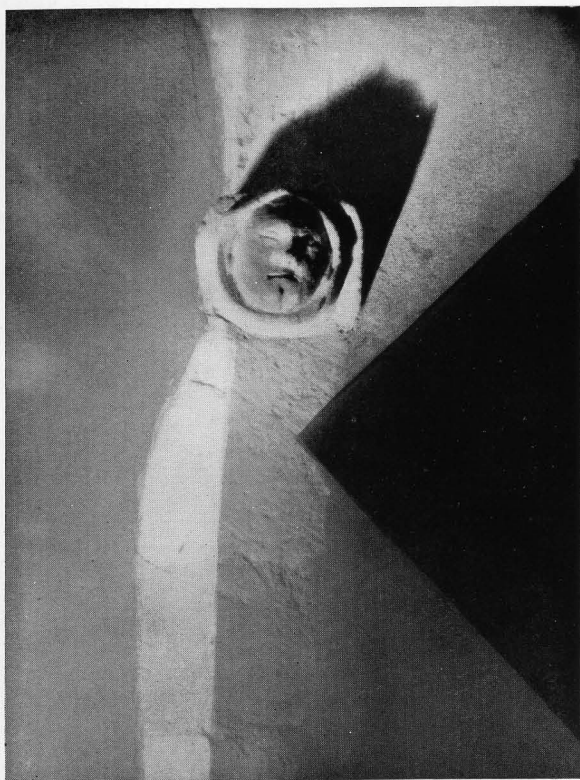


[From a Photograph by Marcus Adams.

26. THE CHURCH FROM THE WEST, showing the only entrance to the Bells.

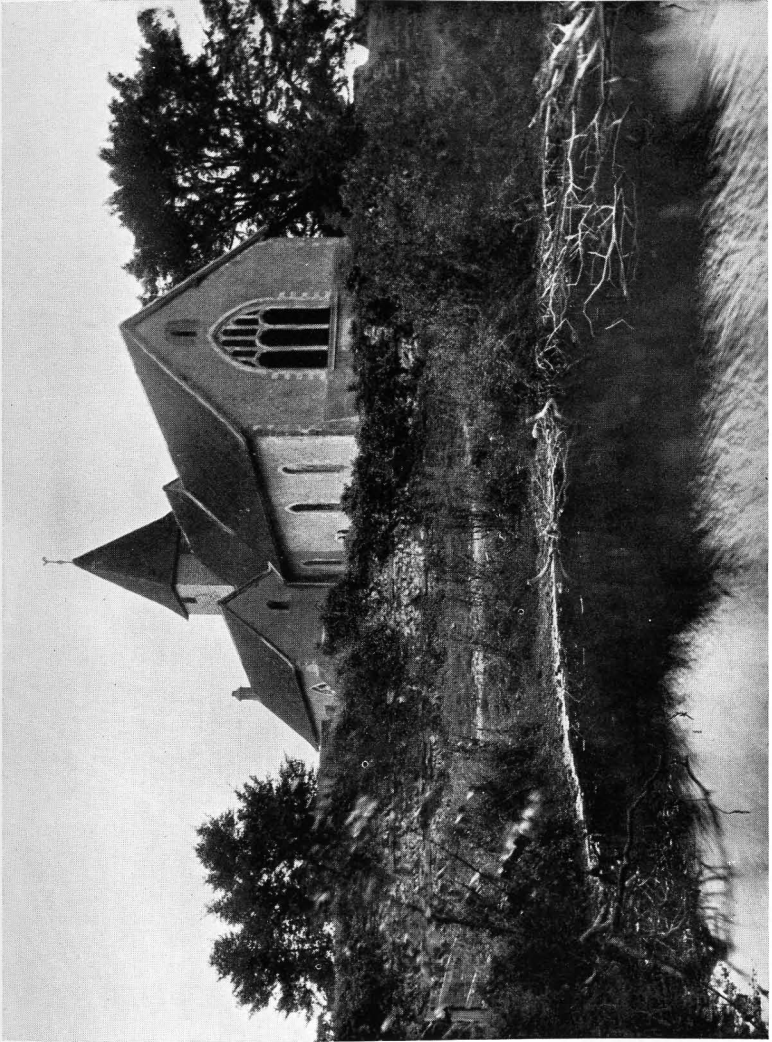


27. GARGOYLE AND BASE OF PILLAR FORMING A ROCKERY.  
[From a Photograph by Marcus Adams.]



*[From a Photograph by Marcus Adams.]*

28. CORBEL ON SOUTH WINDOW OF SOUTH AISLE.



*From a Photograph by Marcus Adams.*

29. EAST END OF CHURCH with Pond in the foreground.