

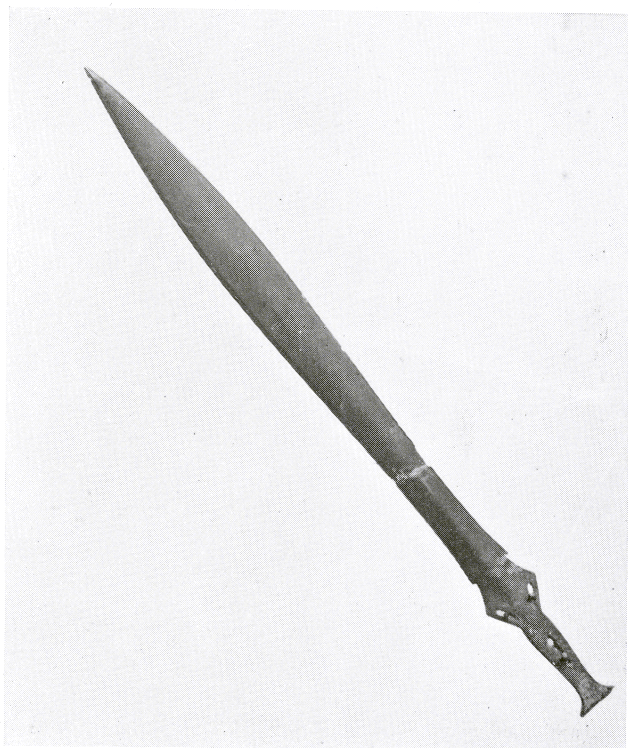
A.



B.

Neolithic bowls from the Thames at Mongewell. Height of A is 12 cm. ( $4\frac{3}{4}$  ins); height of B is 10.2 cm. (4 ins.).

PLATE II.



A. Late Bronze Age. Bronze, leaf-shaped sword with V type hilt. Scale approximately 1 : 5.



B. Pagan Saxon. Gilt Bronze Saucer Brooch. Scale 6 : 5.

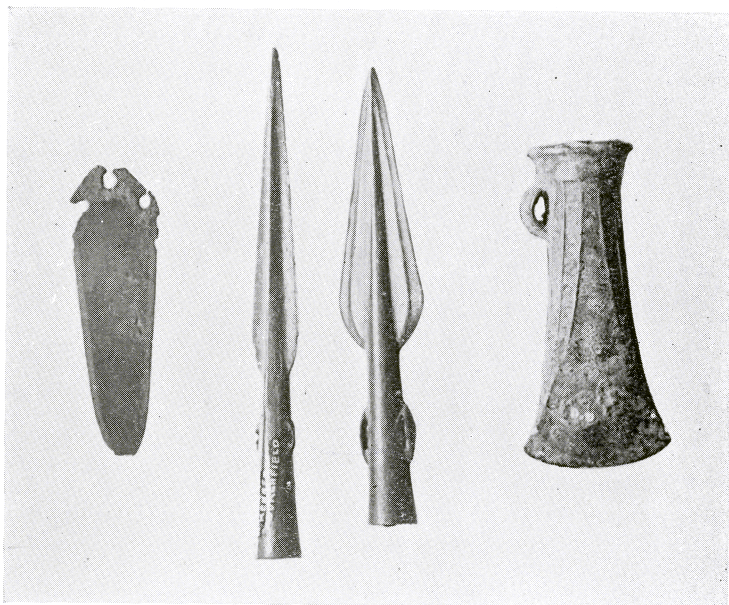


PLATE III.



Late Bronze Age. Socketed and Barbed Bronze  
Spearheads. Scale approximately 1 : 2.

PLATE IV.



A.

B.

C.

D.

- A. Early Bronze Age. Bronze, flat-riveted dagger.  
B. Mid-Bronze Age. Bronze socketed and looped spearhead.  
C. ditto ditto  
D. Late Bronze Age. Bronze, ribbed, socketed and looped  
axe.

Scale of all four is approximately 2 : 5.