

SOME NOTES ON THE DOMESTIC ARCHITECTURE OF  
WALLINGFORD, BERKSHIRE



FIG. 2. The White Hart Inn.



FIG. 1. The George Inn.



SOME NOTES ON THE DOMESTIC ARCHITECTURE OF  
WALLINGFORD, BERKSHIRE

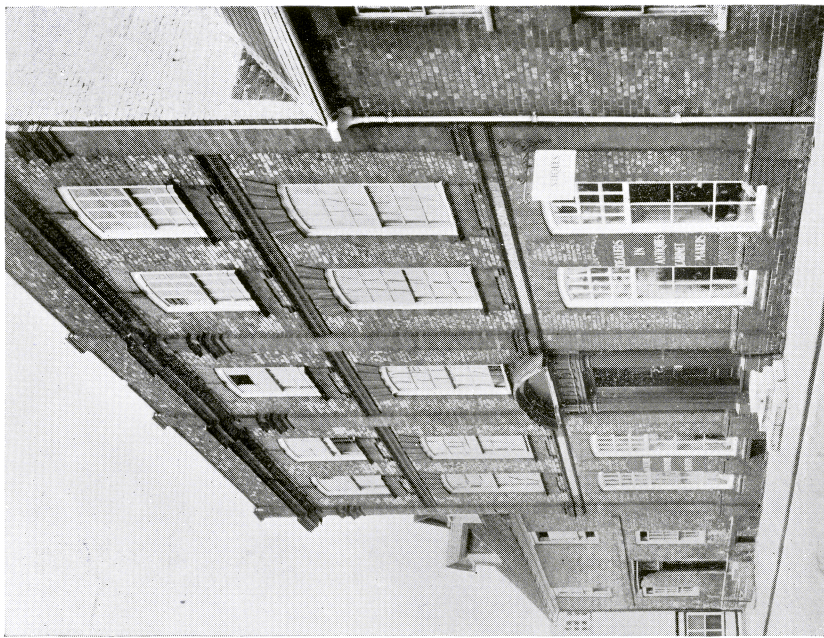


FIG. 4. Calleva House.

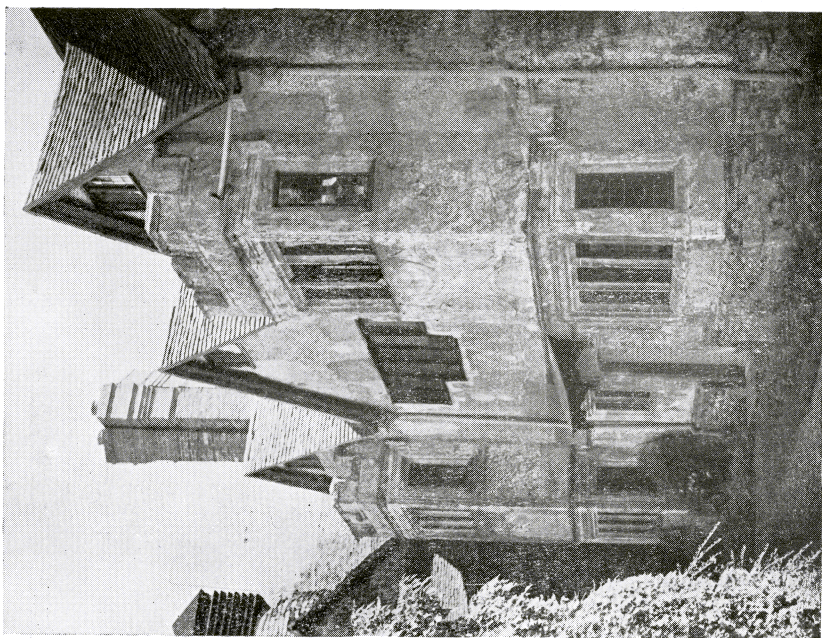


FIG. 3. St. Lucians. Garden Front.



SOME NOTES ON THE DOMESTIC ARCHITECTURE OF  
WALLINGFORD, BERKSHIRE



FIG. 5 Flint House and Flint Cottage.



FIG. 6. No. 16 St. Mary's Street.



SOME NOTES ON THE DOMESTIC ARCHITECTURE OF  
WALLINGFORD, BERKSHIRE



FIG. 7. The Lamb Inn.



FIG. 8. The Gabled Cottage, St. Mary's Street.



SOME NOTES ON THE DOMESTIC ARCHITECTURE OF  
WALLINGFORD, BERKSHIRE

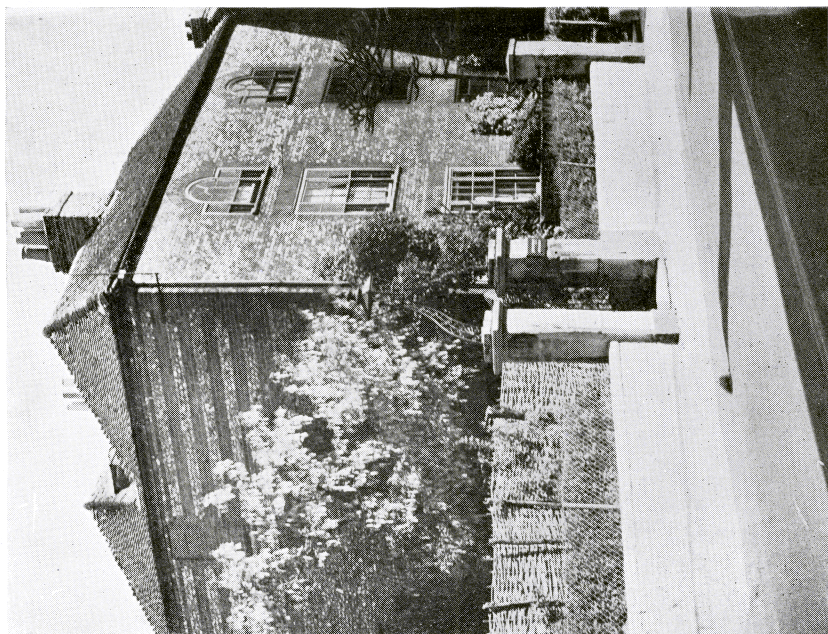


FIG. 10. Nos. 28 and 29 St. Mary's Street.

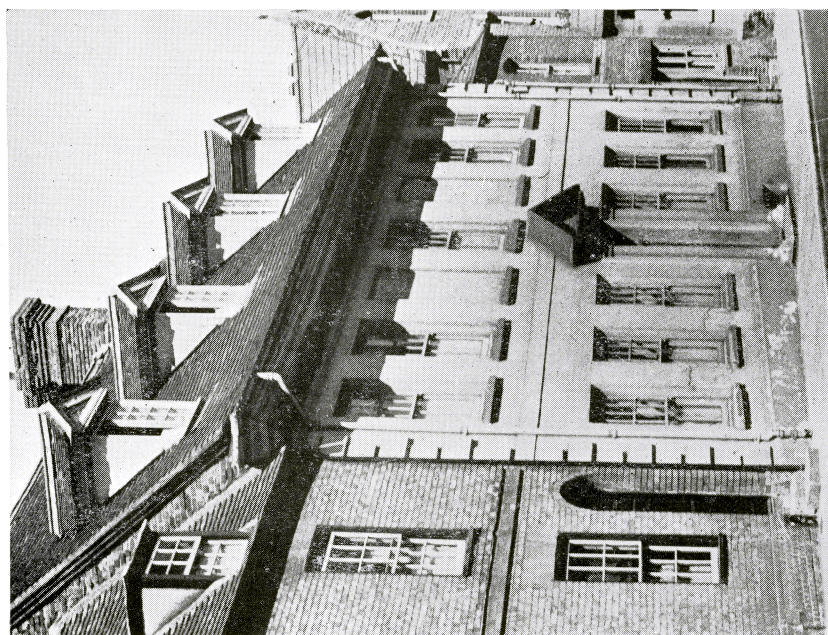


FIG. 9. No. 80 High Street.



SOME NOTES ON THE DOMESTIC ARCHITECTURE OF  
WALLINGFORD, BERKSHIRE



FIG. 12. Calleva House.

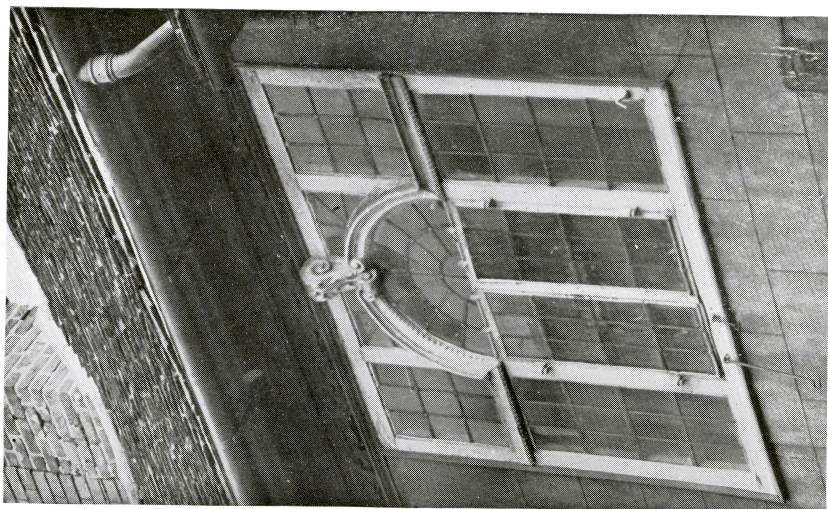


FIG. 11. No. 23 St. Mary's Street.



SOME NOTES ON THE DOMESTIC ARCHITECTURE OF  
WALLINGFORD, BERKSHIRE



FIG. 13. The White Hart Inn.



FIG. 14. No. 1 St. Leonard's Square.