

BLEWBURTON HILL

SECTION THROUGH WESTERN DEFENCES AND TERRACES

CUTTING F

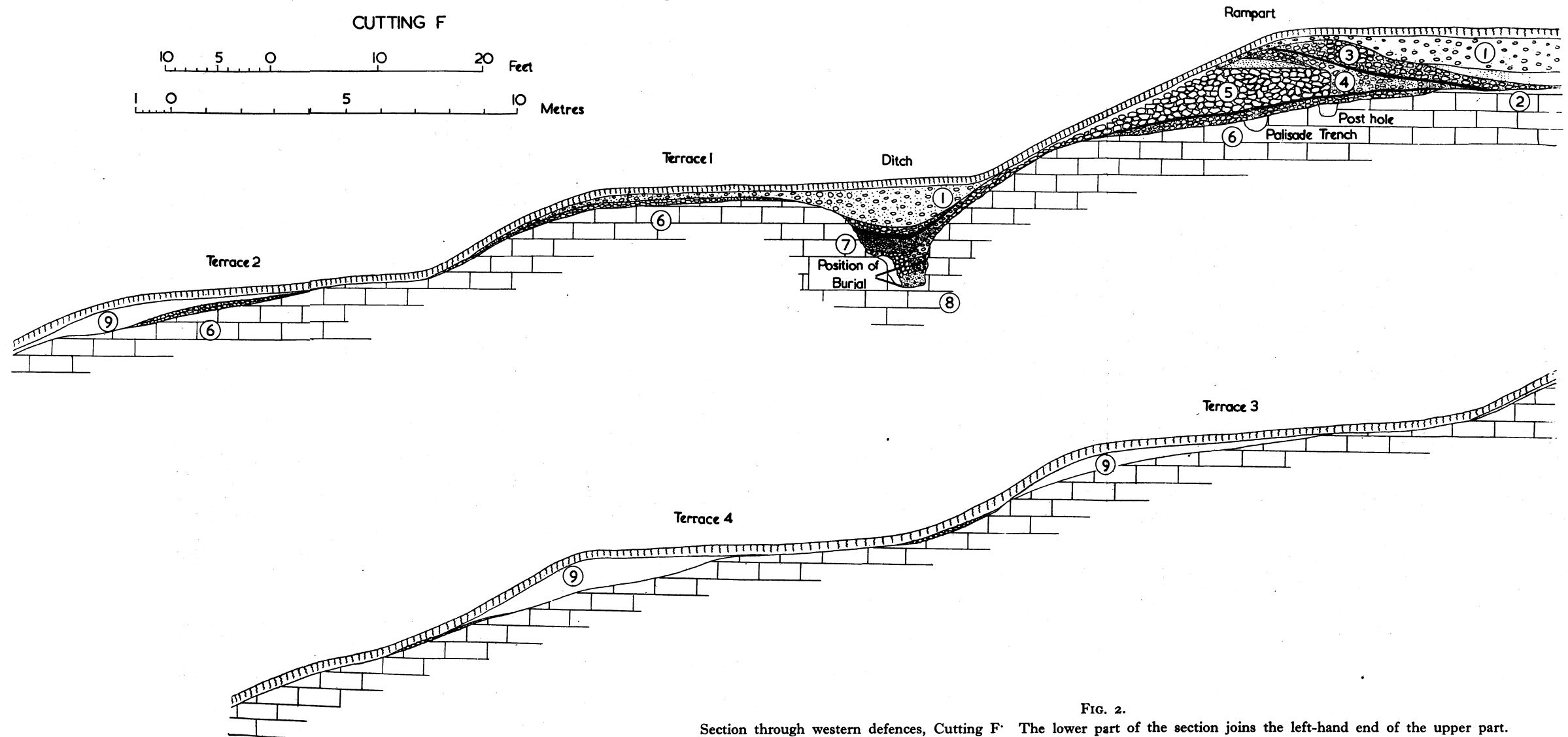
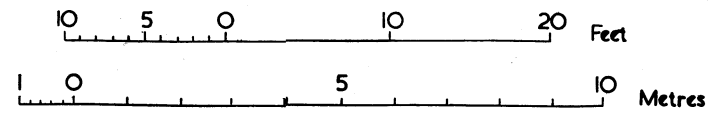
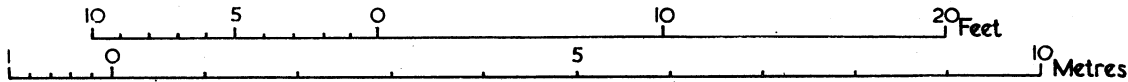


FIG. 2.

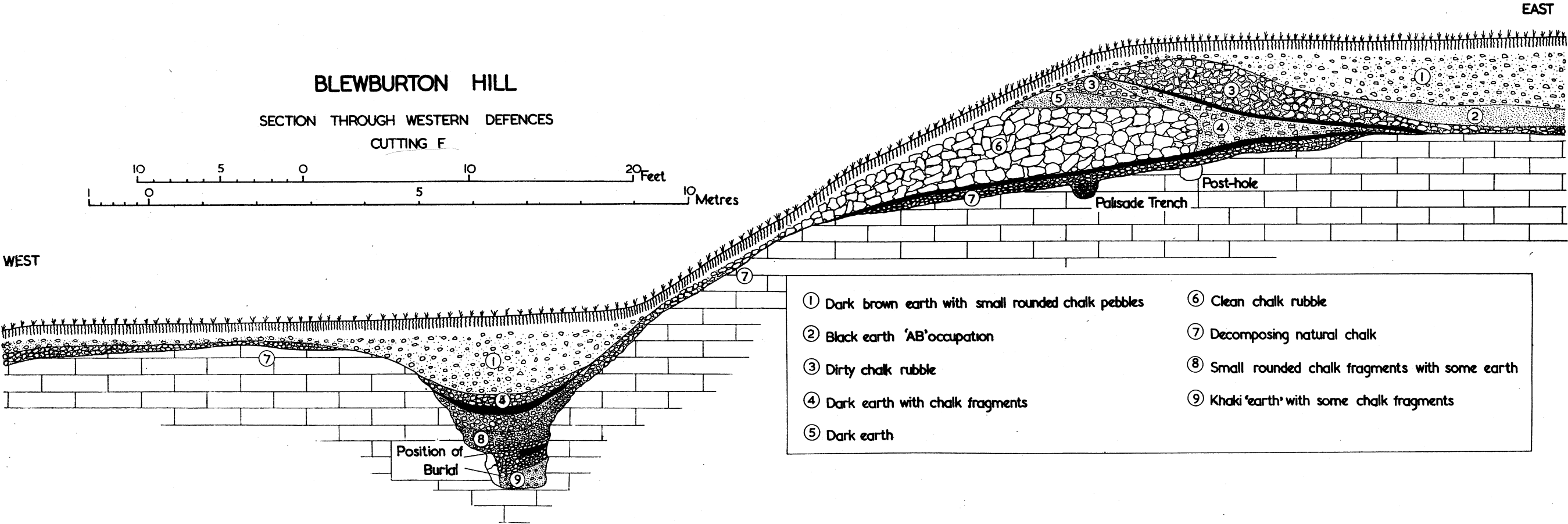
Section through western defences, Cutting F. The lower part of the section joins the left-hand end of the upper part.

BLEWBURTON HILL

SECTION THROUGH WESTERN DEFENCES
CUTTING F



WEST



EAST

- | | |
|---|---|
| ① Dark brown earth with small rounded chalk pebbles | ⑥ Clean chalk rubble |
| ② Black earth 'AB' occupation | ⑦ Decomposing natural chalk |
| ③ Dirty chalk rubble | ⑧ Small rounded chalk fragments with some earth |
| ④ Dark earth with chalk fragments | ⑨ Khaki 'earth' with some chalk fragments |
| ⑤ Dark earth | |

FIG. 3.
Detailed drawing of eastern end of Cutting F.

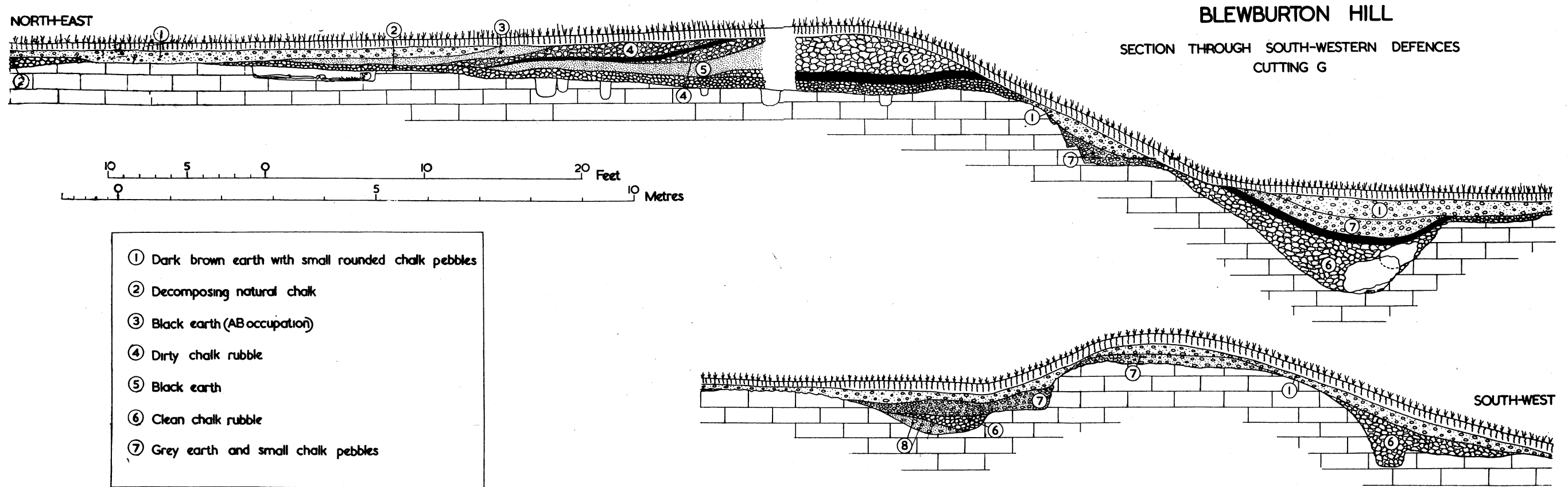


FIG. 4.
Section through south-western defences. The lower part of the section joins the right-hand edge of the upper part.

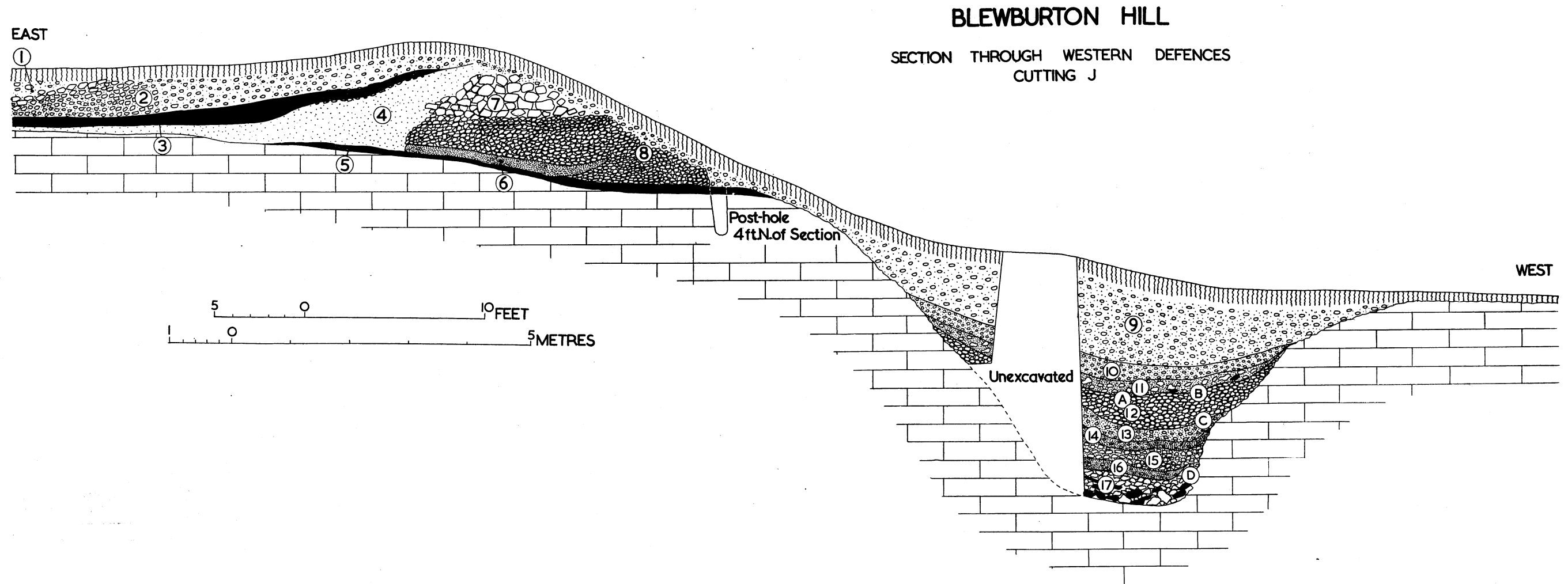


FIG. 5.
Section through defences on southern side of gateway.