

THE 'PRIORY', MARCHAM, BERKSHIRE

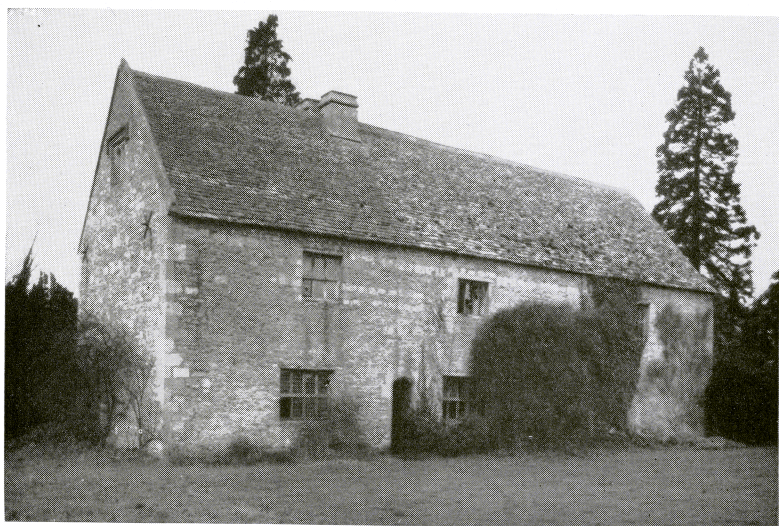


PLATE Ia.
Exterior from south-east.



PLATE Ib.
Interior—east doorway and screens, from south-west.

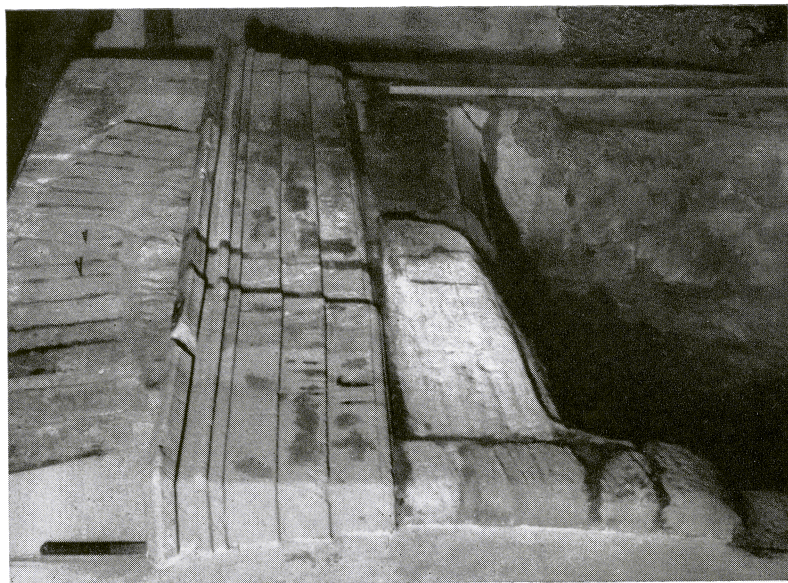


PLATE IIb.

Interior—ground floor, south room. Fireplace from west-south-west.

PLATE IIc. Interior—fireplace in centre ground floor room, from north-west.

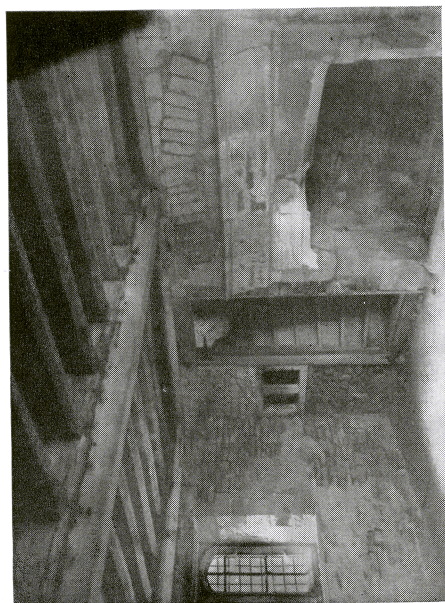


PLATE IIa. Interior—fireplace and staircase in south ground floor room, from south-east.



THE 'PRIORY', MARCHAM, BERKSHIRE



PLATE IIIa.
Interior—first floor north room, from north-east.

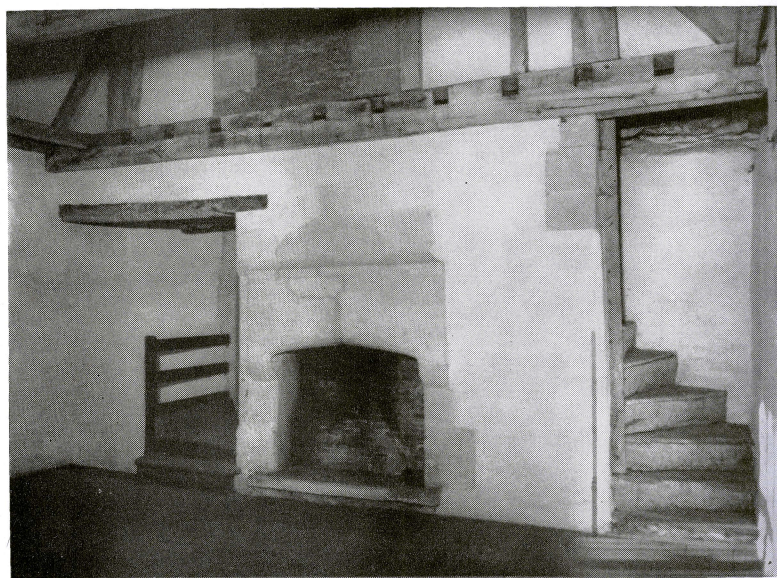


PLATE IIIb.
Interior—first floor, south room. Fireplace and staircases, from south-east.



PLATE IVa.

Exterior—ground floor, south room. West window, from north-west.



PLATE IVb.

Interior—south room, ground floor. West window.