

THE CHURCH BELLS OF BERKSHIRE

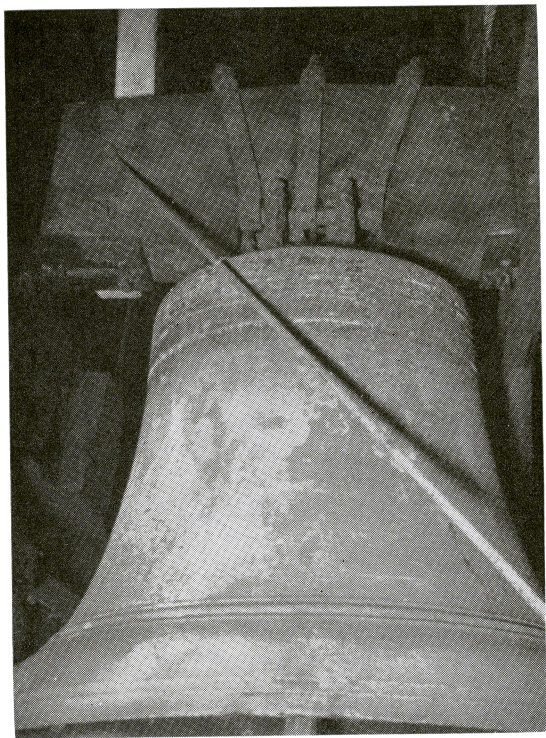


Photo: F. M. Underhill, Esq., F.S.A.

PLATE XLII

Clewer Tower, Windsor Castle. The third bell, cast by William Whitmore, 1650. Its predecessor was the bell named "Aston".

THE CHURCH BELLS OF BERKSHIRE

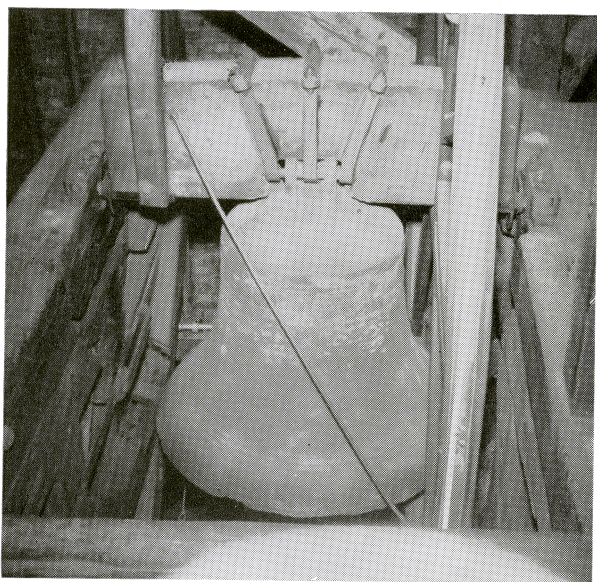


Photo: The Author

PLATE XLIII

Clewer Tower, Windsor Castle. The fourth bell, cast by John Wallis, 1612. Its predecessor was the bell named "George".

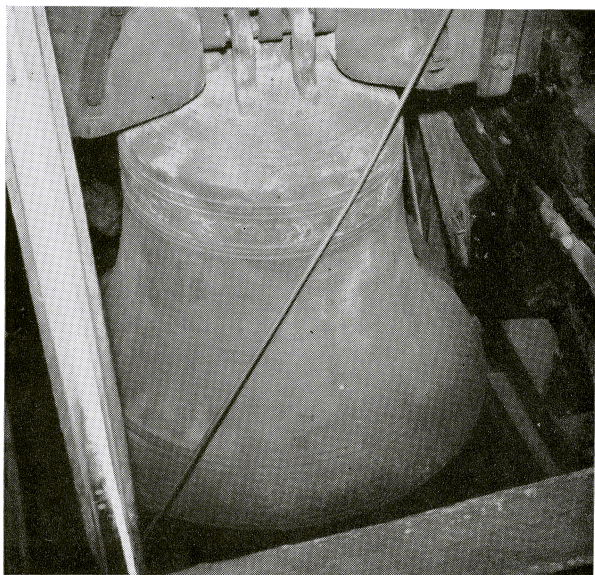


Photo: The Author

PLATE XLIV

Clewer Tower, Windsor Castle. The seventh bell, cast by John Wallis, 1612. Its predecessor was the fourteenth century bell named "Iesu".

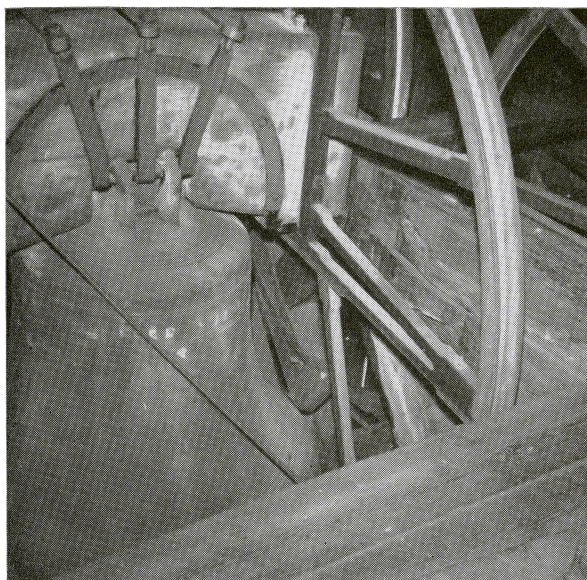


PLATE XLV

Photo: The Author

Clewer Tower, Windsor Castle. The Tenor bell, dated 1614, cast by John Wallis, of Salisbury. Its predecessor was the fourteenth century clock bell, named "Edward".



PLATE XLVI

Photo: The Author

Windsor Castle. Part of the ringing chamber in the Clewer Tower, showing (left) the Ellacombe chiming gear, peal tablets on the north wall, and (right) the ropes of the third, fourth and fifth bells.

THE CHURCH BELLS OF BERKSHIRE



Photo: The Author

PLATE XLVII

Windsor Castle. Part of the ringing chamber in the Clewer Tower, showing peal tablets on the west wall and the ropes of the treble, tenor and seventh bells. At the rope of the tenor bell is Mr. A. Hole, the tower keeper.