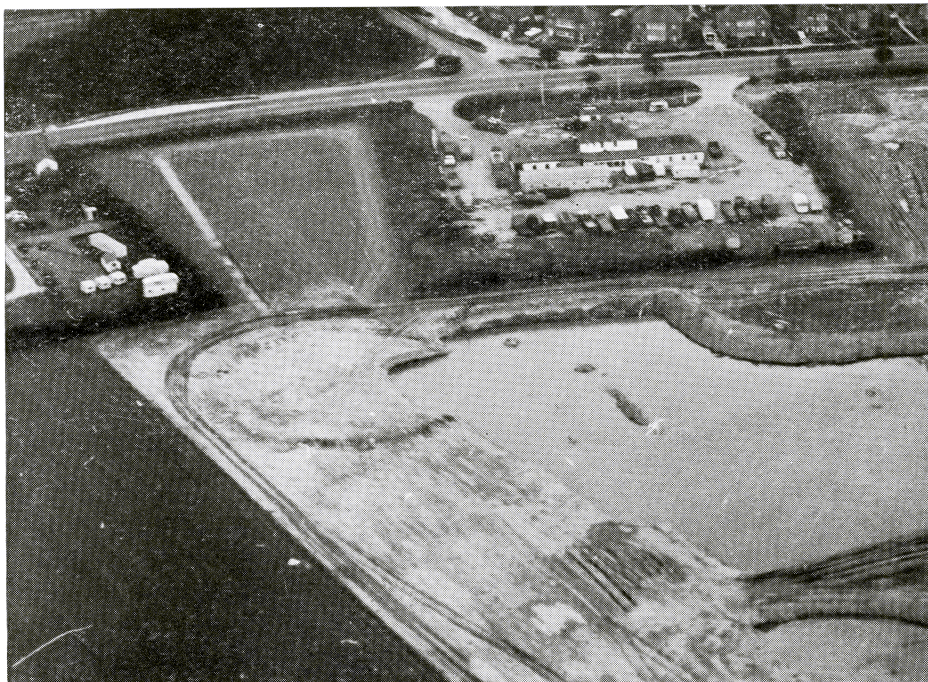




Plate I. Re-erection in July 1962 of one of the fallen facade stones at Wayland's Smithy
by the Ministry of Public Buildings and Works



a



b

Plate II (a) Aerial view of crop marks of four adjoining ring ditches at Englefield, 19th June 1962. (b) Aerial view of large ring ditch exposed in the Marley Tile Pit at Beenham, 23rd June, 1963