

PLATE VI



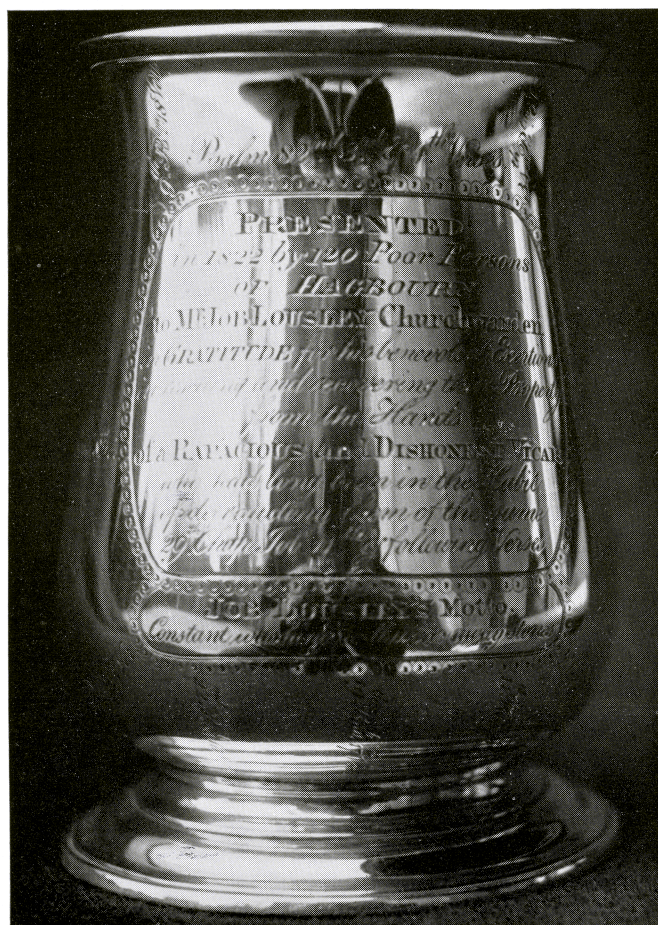
(a) BLEWBURY MANOR. *The home of Joseph Lousley in his later years and, as Blewbury Farm, the address used for many of Job Lousley's letters from 1818 to 1827*



(b) MANOR HOUSE, HAMPSTEAD NORRIS. *The home of Job Lousley from 1827 to 1855. The wing with the lower roof was built specially to house his large library, and some of the shelving is still in position*



(a) JOB LOUSLEY. Portrait taken at age of 37 at Blewbury in 1827



(b) THE VICAR'S CUP. Presented to Job Lousley in 1822 by 120 poor persons of Hagbourn

PLATE VIII



(a) JOB LOUSLEY. *Portrait taken at age of about 50. The waistcoat worn is still preserved in the family*



(b) MEMORIAL STONE TO JOB LOUSLEY. *Situated in Beech Wood, Hampstead Norris*