



PLATE 1. *The Abbey Mill : line of standing (west) arches ; facing east.*



PLATE 2. *The Abbey Mill : central arch, north side, west face.*



PLATE 3. *The Abbey Mill : north arch, facing east.*

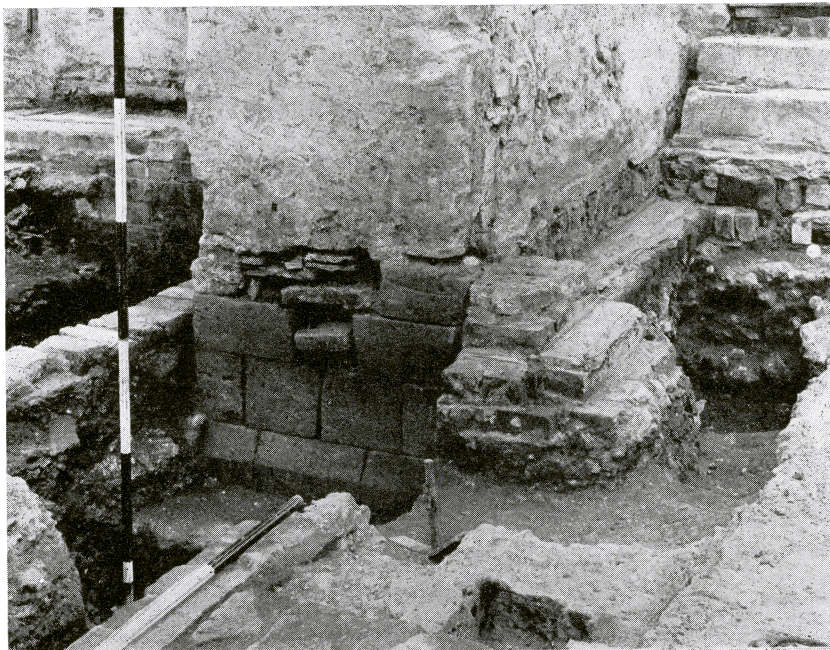


PLATE 4. *The Abbey Mill : north arch, south face.*



PLATE 5. *The Abbey Mill : north arch, north face.*



PLATE 6. *The Abbey Mill : footings of central pier of destroyed east line of arches ; facing south.
This would lie directly to the east of the northernmost pier shown in Plate 1.*



PLATE 7. *The Abbey Mill : footings of south pier of eastern line of arches, north face.*

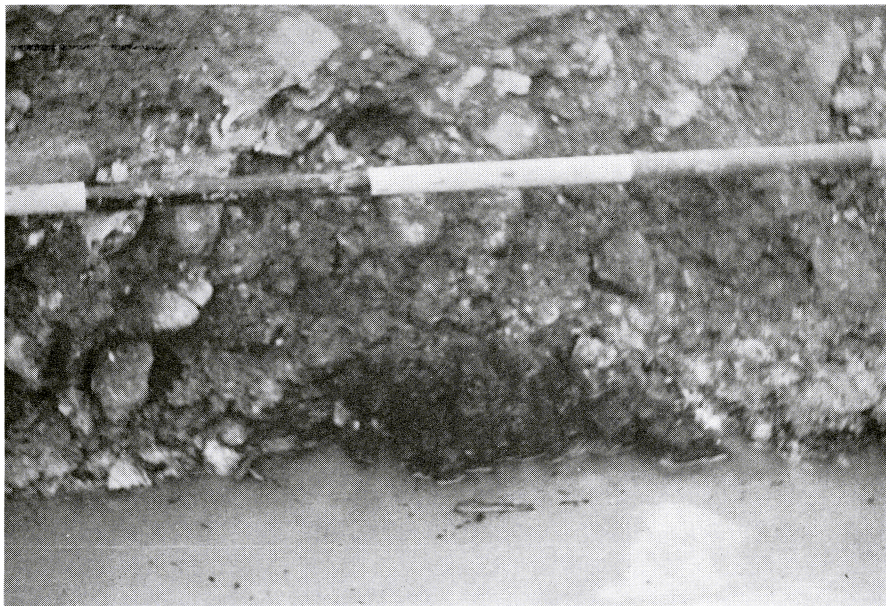


PLATE 8. *The Abbey Mill : footings of south pier of eastern line of arches, base of east face showing timber.*



PLATE 9. *The Abbey Mill : flint in mortar footings and poor ashlar wall to west of standing arches (area A), facing south.*



PLATE 10. *The Abbey Mill : central pier of standing arches, west face, showing junction of pier and flint in mortar footings (Plate 9).*



PLATE 11. *Outer wall of Abbey to the east of the Abbey Mill, showing destruction.*



PLATE 12. *The Abbey Mill shortly before demolition.*

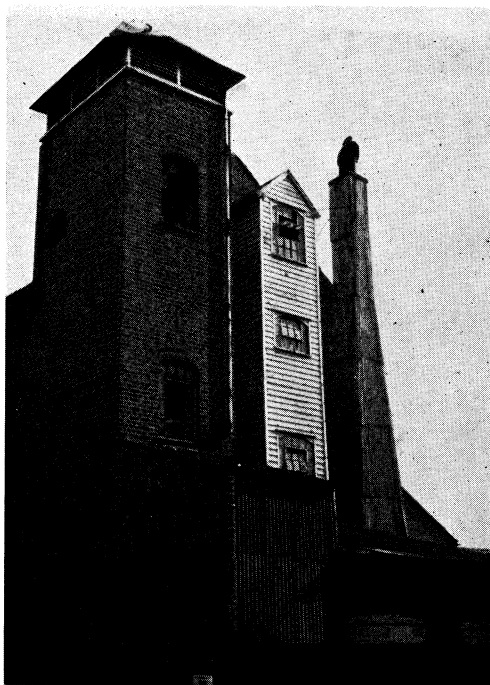


PLATE 13. *The Abbey Mill shortly before demolition.*

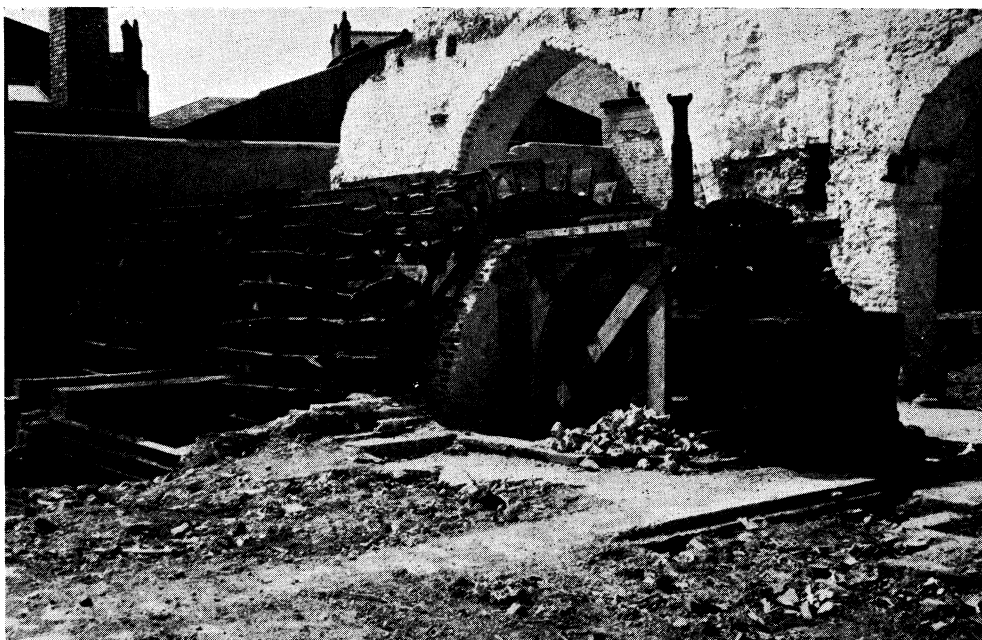


PLATE 14. *The Abbey Mill : the latest mill machinery.*



PLATE 15. *Cloister Area : Trench I, showing junction of footings and drain.*

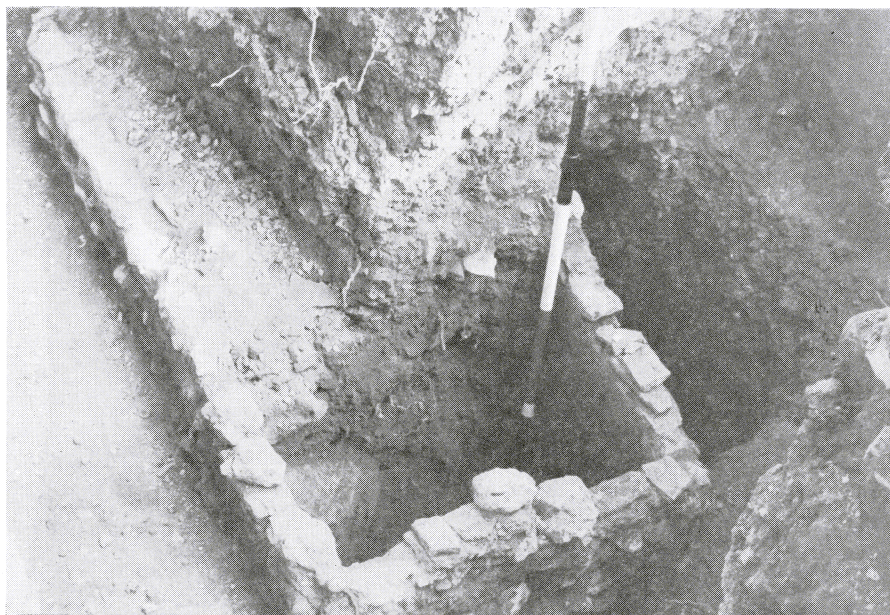


PLATE 16. *Cloister Area : Trench II, showing soakaway(?).*