

CFA ARCHAEOLOGY LTD

September 2008

Commissioned by Mr Giles Finnegan

This document has been prepared in accordance with CFA standard operating procedures.

Author:	Date
Approved by:	Date
Draft/Final Report Stage:	FINAL

Author: Michael Cressey BA MSc PhD MIFA FSA Scot

Illustrator: Leanne Whitelaw BSc MAAIS

Editor: Tim Neighbour BSc FSA Scot MIFA

CFA ARCHAEOLOGY LTD
Old Engine House
Eskmills Business Park
Musselburgh EH21 7PQ

Tel: 0131 273 4380

Fax: 0131-273 4381

email: cfa@cfa-archaeology.co.uk

**Hollies Barn, Cargo, Near Carlisle
Standing Building Survey**

Report No. 1543

CONTENTS

1.	Introduction	3
2.	Methodology	3
3.	Desk-based survey results	4
4.	Standing Buildings Survey Results	6
5.	Discussion	8
6.	References	9

APPENDICES

Appendix 1	Buildings context list	10
Appendix 2	Photographic Register	12

PLATES (Bound at rear)

Plate 1	General view of the east-facing elevation of the barn
Plate 2	General view of the west-facing elevation and barn gable
Plate 3	Close-up of the two arched barn doorways
Plate 4	General view of the garage doorways on the east range
Plate 5	East range gable and boundary wall
Plate 6	Interior shot of Unit H
Plate 7	Interior shot of Unit G
Plate 8	Interior of the barn looking south
Plate 9	Interior of the barn looking west
Plate 10	Oil stained bearing plate inserted in the barn wall
Plate 11	General view of the A-frame roof structure

FIGURES (Bound at rear)

Figure 1	Location map
Figure 2a-d	Historical map regression
Figure 3a-c	External elevation drawings and roof section
Figure 4a-b	Ground and first floor plan

CONTACT SHEETS (Bound at Rear)

Contact sheets 1 to 5

1. INTRODUCTION

1.1 General

This report presents the results of a Level 2 standing building survey carried out by CFA Archaeology Ltd (CFA) in August 2008 on behalf of Giles Finnegan at a barn to the rear of the Hollies, Cargo near Carlisle Cumbria (NGR NY 365459 centred on; Fig. 1). A planning condition has been put in place to record the historic barn (County Historic Environment Record No. 41928) in advance of its conversion into a dwelling.

The survey has been carried out in line with the terms of reference presented in a Project Brief supplied by Cumbria County Council.

1.2 Objectives

The objectives of the study were as follows:

1. To carry out a rapid desk-based assessment and place the barn in its historical context.
2. To produce a Level 2 standing building record of the barn.
3. To produce a Historic Building Survey report outlining the results of the work

2. METHODOLOGY

2.1 General

CFA follows Institute of Field Archaeologists Code of Conduct, Standards and Guidelines for Historic Building Survey as appropriate.

2.2 Desk-based Survey

An examination of readily available desk-based sources, namely historical maps (listed in Section 6) and listed buildings information, was carried out prior to the commencement of the standing building appraisal. The Historic Environment Records Officer, County Offices, Kendal was contacted about the Listed Building status.

2.3 Building Survey

A photographic record was maintained during the site survey using digital photography. A catalogue of digital images is included in Appendix 1. The barn has an east and west range and has been assigned individual Unit numbers for the rooms. The external elevation drawings (Figs 3a-d) are based on the architects drawings which have been checked for internal and external accuracy and were found to be correct.

3. DESK-BASED SURVEY RESULTS

3.1 Cartographic record (Fig. 2)

The 1839 Tithe map of Cargo is the earliest map with sufficient detail to show the layout of barn which was then as it is today an L-shaped building. The map shows that the village as a ribbon development, comprising two rows of properties either side of the main road. A series of rectangular fields or enclosures extend from the back of the buildings fronting the road. The SMR considers that this arrangement reflects the medieval pattern of medieval land holdings as well as the post medieval layout (SMR No 40212). The associated tithe map *Schedule* provides details of land ownership and rental values of each of the village properties. The barn was part of a homestead (Property No 11) and orchard 79 acres in extent occupied by William Robinson. The tenancy attracted a parish rental value of £1 7s 3d. which was paid annually to the Vicar of Stanwise. An annual rent of £7 15s was paid to the Dean and Chapter of Carlisle.

The 1865 First Edition Ordnance Survey map shows the barn to the rear of the Hollies set within an area with orchard to the rear. The second edition 1901 and the 1926 Ordnance Survey maps show that the building footprint has remained the same since 1843.

3.2 Listed Buildings Information

The barn is not mentioned in the Listed Buildings of Cumbria (LB SMR 41928) although the Hollies farmhouse is a Grade II Listed Building. The farmhouse dates to the early 19th century and is a two storey building with three bays of windows.

4. STANDING BUILDING SURVEY RESULTS

4.1 General

The barn occupies an L-shaped footprint and is situated to the rear of the Hollies at the centre of the village of Cargo. The barn was part of several other buildings making up a small farmstead in 1835. The barn has a single storey east range comprising two garages. The west range is the main block of the barn and is two storeys high.

The detailed survey results are presented in the following section. Numbers in parenthesis relate to architectural features shown on the elevation drawings (Figs 3a-d) and listed in Appendix 1. For ease of description the barn elevations are normalised to north, south east and west-facing rather than northeast-facing which is the precise orientation.

The internal compartments within the barn have been assigned individual Unit numbers shown on Figs 4a-b.

Selected photographs are shown in Plates 1-11. All the photographs taken are presented as contact sheets 1-5, supported by descriptions in Appendix 2.

4.2 The Exterior

East-facing elevation (Fig 3a, Plates 1 and 3)

The east-facing elevation is 15.3m long and 6.5m high and constructed of red-brick (033) in English garden bond with four stretchers and a single row of headers. Red and cream sandstone quoins (005) are present at the western end. The roof is slate (002) with semi-circular ridge tiles (001). Two glass and Perspex skylights are present (022 and 023). The rain goods are cast-iron (054). At ground floor level there are two arched openings. The larger of the two occupies the centre of the elevation and has a three-pointed segmented arch with brick voussoirs (030) and ashlar sandstone surrounds (031). A double-leafed, plank-built door (029) is present. The smaller arched opening is also three-pointed with brick (028) and ashlar surrounds (027). A double-leafed plank-built door is present. Between the arched openings at ground floor level there is a stone foundation course (037). On the left-hand side of the largest arched opening there is a plank-built door (032). At the first floor level there are two square-headed window openings (024 and 025). Both have brick surrounds and sandstone sills.

The elevation also includes the gable of the single storey garages on the west range. The gable is built of coursed rubble sandstone (035) with ashlar dressings (016 and 055). The roof is slate (014) with stone ridge tiles (013). A slit vent is present (034) on the right hand side of the elevation. At the centre of the gable is a property boundary wall (036).

North-facing elevations (Fig 3b, Plate 2)

The north-facing elevation includes the west-range garage entrance and the gable of the barn. The brick-built boundary wall adjoins the east end of the elevation (036). The ashlar surrounds on the gable (016) and partition wall (017) and those to the left (018) of a plank-built door (020) with sandstone lintel (054) are all broached sandstone. A steel Accro prop (019) supports a wooden beam (015) that in turn supports the A-frame timber roof trusses.

The main build of the northwest-facing gable of the barn is constructed of cream sandstone (006) with ashlar quoins (005). The pined gable roof is slate (002) with tiled ridges (001). The rain goods (003 and 004) are cast-iron. Two plank-built doors (009 and 010) are present on the ground floor divided by ashlar sandstone between them. Each door has ashlar sandstone surrounds (011 and 012).

West-facing elevation (Fig 3c, Plate 2)

The west-facing elevation represents the rear of the barn and is constructed of coursed sandstone (043) with ashlar quoins (005). The principal features include ten slit vents (039) and four square-headed windows (038 and 040). A metal fitting (052) is present below the topmost window (040), its function is not clear. At the base of the elevation there is a patch of brick blocking work (042) and a circular aperture (051) that extends through the wall.

South-facing elevation (Fig 3d)

The south-facing elevation includes the barn gable and the rear of the garages. The barn gable is built of coursed sandstone blocks with a mortar bond (050) with ashlar quoins (005). Six slit-vents (045) are present within the wall. The roof is pined and covered with slate (002) with ridge tiles (001). The adjoining west range has a stone-built wall (049) with ashlar quoins (056) and incorporates three slit-vents (050). A stone-built boundary wall (046) projects off the elevation. A six-paned rectangular window (047) is also present. The slate roof (014) has a glass and timber-framed skylight (048).

4.3 The Interior

Table 1 presents a summary of the various elements (Units A to J) of the barns interior. More detailed descriptions are presented in the paragraphs below the table.

Unit No	Dimensions	Function
Unit A	3m x 2.05m	Storeroom
Unit B	3m x 1.5m	Storeroom
Unit C	3m x 2.9m and 2.6m x 1.5	Storeroom
Unit D	7.5m x 7.3m	Barn
Unit E	2.2m x 1.5m	Storeroom
Unit F	8.5m x 3.6m	Byre
Unit G	4.7m x 2.8m	Garage
Unit H	4.05m x 5.05m	Garage
Unit I	7.05m x 3.6m	Loft
Unit J	6.9 x 3m and 2.6m x 1.5m	Loft

Table 1 Unit dimensions and function in Figs 4a-b.

Unit A Storeroom (Fig 4a)

Unit A is situated at the corner of the west gable and is lit by a window (038) on the west-facing gable. A simple wooden shelf occupies the corner of the room. The floor is concrete and the walls have been whitewashed. A wooden shelf is present on the rear wall. The ceiling is panel boarded.

Unit B Storeroom (Fig 4a)

Unit B is situated at the centre of the west gable and is windowless. The floor is concrete. The walls are featureless and whitewashed.

Unit C Storeroom (Fig 4a)

Unit C is L-shaped in plan and incorporates the walls of Unit B which are brick and rubble built and whitewashed. The main entrance is the smaller of the arched openings (028). The timber floor joists of the loft space above are visible. The floor is mainly concrete with cobble and brick within the northern half of the unit.

Unit D Barn floor (Fig 4a, Plate 8 and 9)

The barn floor is open plan. Unit D is open to the roof. At the north end of the barn a set of brick and stone steps lead up to the loft space. The east facing elevation is mainly whitewashed stone with occasional brickwork visible at the south end. The floor includes flagstones, concrete and mortar and clay. It is likely that flagstones covered the whole of the barn interior.

Inserted into the rubble-built west-facing elevation is a wooden frame supporting two bearings for supporting drive-shafts associated with either a threshing device or cattle cake crusher. Below this feature there is an aperture through the wall which may mark the position of an early horse-engine drive shaft. The 1865 First Edition map shows the position of a circular horse-engine house built against the west-facing elevation. No scars from this feature such as roof raggles or sockets are visible on the external elevation.

Unit E Storeroom (Fig 4a)

Unit E is a small storeroom located on the south side of the main arched doorway and is constructed from brick. The unit is accessed via the plank-built door on the east-facing elevation. The store is windowless with whitewashed brick walls and concrete floor.

Unit F Former Byre (Fig 4a)

Unit F is a rectangular in shape with three slit vents on the south-facing interior wall. The floor bears evidence of stalling with two rows of brick laid in cobbles which suggests the position of animal stalls. There are two entrances to the byre with one on the north-facing elevation (feature 20) and one at the west end. A window on the west elevation lights the byre. The timbers used in the roof appear to suggest re-use from an earlier cruck-framed structure.

Unit G Garage (Fig 4a)

This unit was last used as a garage but the presence of slit vents in the south-facing elevation (Feature 050) suggest that during the 19th and early 20th centuries the unit was used as an animal house. The partition wall between units G and F is very low suggesting that it may either be secondary or reduced in height. The entrance to the garage is on the north facing elevation. The floor is cobbled and hard compacted earth.

Unit H Garage (Fig 4a)

Unit H has a large bay opening and is opposite a large window on the rear wall (047). The presence of slit vents on the east gable wall suggest that it was originally used as an animal house and later used as an implement shed and garage. The roof timbers have been renewed but the main purlins running laterally across the unit appear to be original. These are incorporated into the fabric of the gable. Mortise joints point to the position of

Unit I Loft (Fig 4b)

Unit I is loftspace above Unit F, the byre and is accessed by a wooden staircase from the ground floor. Three slit vents are present on the south facing elevation with another on the west-facing elevation. To the right of this vent is a window. The timber floor is a 20th century replacement for an earlier timber floor that rested on tie beams of the A-frame trusses.

Unit J Loft (Fig 4b)

The loft occupies an L-shaped plan and is lit by three windows and is accessed via a brick and stone-built stair. The stair leads to a doorway inserted in the partition wall. A second door overlooks the main barn entrance and its position suggests that it was a pitching door for loading directly from a large dray or cart.

4.4 Roof construction (Plate 11)

The East Range garages (Units G and H) have A-frame trusses with lap-jointed purlins that appear to have been reused from an earlier building. The shape of these timbers is highly irregular suggests that they were once part of a cruck-framed roof. The common rafters supporting the slates are probably later than the main build. The rafters rest directly on the wall head.

The barn roof is supported on A-frame trusses (Fig 3c, Plate 11) that rest directly on the wall head. These are machine-sawn timbers with carved king posts which are tied by iron bolts. The scarfe-jointed trusses support the large through purlins that are formed from large rounded branch wood. The piended roof configuration on each gable wall requires the timbers to be braced at the corners. Here cross-braces straddle the corners and carry the main trusses.

The bolted king-post A-frame trusses are probably late 19th century in date and have replaced an earlier A-frame truss arrangement, elements of which, namely the purlins, were in a suitable condition to be re-used. When the new roof was introduced the brick partition walls were built on existing rubble walls that may not have been carried through to the roof space.

5. DISCUSSION

The barn was at the centre of a farmstead shown first on the 1839 tithe map (Fig 2a). The current layout of the barn suggests that it has remained largely unaltered from its construction during the early 19th century. The barn was used for a combination of different activities within the farmstead, with feedstuffs stored in the loftspace above the byre. The large bay arched opening allowed the large agricultural carts to be brought in and storage crops pitched through the doorway in Unit J.

The main changes that have occurred appear to be to the roof and to the partition walls. The present barn roof is an amalgamation of late 19th century A-frame trusses that incorporate timbers from an earlier phase of roof. The internal brick partition walls within the barn are later inserts and have been carried up through and over the

current A-frame trusses to replace an earlier loft floor that was present at tie-beam height.

There is evidence of two phases of power-generation for crushing animal feedstuffs (cattle cake which was supplied to farms as hard blocks had to be crushed before it could be used). The first is represented by a hole in the base of the west-facing elevation (Feature 051) and is related to a circular horse engine that is shown only on the 1865 Ordnance Survey map. The horse engine was removed before the survey of the 1901 Ordnance survey map. The second form of power-generation was belt driven shafts that ran through the wall supported on two bearing plates (see Plate 10) housed in a wooden frame and inserted in the barn wall. These are probably early 20th century in date; the primary power source probably being a small diesel engine housed outside the barn.

6. REFERENCES

Cumbria Sites and Monument Record No 40212

Cumbria Sites and Monument Record No 41928

Ordnance Survey 1865 First Edition Sheet XV1.14

Ordnance Survey 1901 Second Edition Sheet XV1.14

Ordnance Survey 1926 Third Edition Sheet XV1.14

Tithe Map of 1839, Cargo Village. DRC 8/42 CCRO

APPENDIX 1: BUILDING CONTEXT LIST

Context	Component	Element	Summary description
001	West Range	Roof	Slate tile ridge
002	West Range	Roof	Slate tile roof, diminishing courses
003	West Range	Rain goods	Iron guttering
004	West Range, Northwest facing	Rain goods	Down pipe
005	West Range, Northwest facing & Southwest facing	Fabric	Dressed Quoins, pale sandstone
006	West Range, Northwest facing	Main Build	Coursed sandstone blocks bonded with sandy mortar
007	West Range, Northwest facing	Window	First floor window with dressed sandstone surrounds
008	West Range, Northwest facing	Fabric	Dressed Quoins, bigger than 005,012 & 011, pale sandstone
009	West Range, Northwest facing	Door	Softwood 'thin planked' door on long iron hinges, with dressed sandstone surrounds. Internal latch for locking
010	West Range, Northwest facing	Door	Softwood 'thick planked' door on small iron hinges, with dressed sandstone surrounds.
011	West Range, Northwest facing	Fabric	Dressed Quoins, red sandstone, similar to 031,027, Showing Broached work.
012	West Range, Northwest facing	Fabric	Stressed Quoins, pale sandstone, some have been replaced with newer red sandstone dressed quoins
013	East Range	Roof	Slate tile ridge
014	East Range	Roof	Slate tile roof, diminishing courses
015	East Range, Northwest facing	Roof	Wooden beam
016	East Range, Northwest facing	Fabric	Dressed Quoins, pale sandstone, slightly stressed
017	East Range, Northwest facing	Fabric	Dressed Quoins on dividing internal gable wall. Pale sandstone. Stone 'inset' for double hinged door
018	East Range, Northwest facing	Fabric	Dressed Quoins, red sandstone, Showing Broached work.
019	East Range, Northwest facing	Door	Supporting metal pole
020	East Range, Northwest facing	Door	'Picket fenced' door, bolt hinged on left side only
021	East Range, Northwest facing	Door	Wooden frame for double-leafed doors.
022	West Range, Northeast facing	Skylight	Patchy glass skylight, set into tiled roof
023	West Range, Northeast facing	Skylight	Single paned skylight, set into tile roof
024	West Range, Northeast facing	Window	First floor square window with brick surrounds and a brick arch for the lintel
025	West Range, Northeast facing	Window	First floor window with brick surrounds and a brick arch for the lintel. Larger than 024
026	West Range, Northeast facing	Door	Double arched wooden planked door. Vertical planks with horizontal panel at the bottom. Double bolts as hinges, on either side
027	West Range, Northeast facing	Fabric	Dressed Quoins, red sandstone, Showing Broached work.
028	West Range,	Door	Brick Arch above door 26, central dressed pale

Context	Component	Element	Summary description
	Northeast facing		sandstone feature- tapering
029	West Range, Northeast facing	Door	Large Wooden planked, arched door. Double bolted doors with an internal hinged door
030	West Range, Northeast facing	Fabric	Brick Arch above door 29, central dressed pale sandstone feature- tapering
031	West Range, Northeast facing	Fabric	Dressed Quoins, red sandstone, Showing Broached work.
032	West Range, Northeast facing	Door	Single planked door with inner latch
033	West Range, Northeast facing	Main Build	Red brick, varying in colour from orange/red to red/brown.
034	East Range, Northeast facing	Slit vent	Stone lined slit vent at gable end of east range. Brick surround and pale sandstone lintel and sill
035	East Range, Northeast facing	Main Build	Mostly rough dark pebbles with red brick and sandstone in-between
037	West Range, Northeast facing	Foundation	Pale sandstone horizontal foundation stones between two arched openings
038	West Range, Southwest facing	Window	Red sandstone with broached surrounds. Lower window retains wooden frame and vertical planks
039	West Range, Southwest facing	Slit vents	Stone lined slit vents
040	West Range, Southwest facing	Window	First floor window, Stone surrounds
041	West Range, Southwest facing	Window	Blocked slit vent hidden by inserted bearing box on the interior of the barn
042	West Range, Southwest facing	Scar	Brick blocking measuring 0.75m by 0.85m
043	West Range, Southwest facing	Main Build	Coursed sandstone blocks bonded with sandy mortar
044	West Range, Southeast facing	Main Build	Lower gable end made up of 80% rough pebbles and sandstone. Upper end patchy with red brick in places and sandstone.
045	West Range, Southeast facing	Slit vents	Brick lined slit vents
046	West Range, Southeast facing	BoundaryWall	Stone boundary wall
047	East Range, Southeast facing	Window	6 paneled wooden framed window, Wooden Lintel
048	East Range, Southeast facing	Skylight	Wooden framed skylight.
049	East Range, Southeast facing	Main Build	Mostly rough dark pebbles with red brick and sandstone in-between
050	East Range, Southeast facing	Slit vents	Brick lined slit vents
051	West Range, Southwest facing	Scar/ Machinery	Opening in stonework, related to possible horse engine?
052	West Range, Southwest facing	Machinery	Metal fitting in stonework
053	West Range, Northwest facing	Rain goods	Well/drain. Stone lined.
054	East Range, Northwest facing	Window	Large red sandstone lintel above side opening to barn
055	East Range, Northeast facing	Door	Two large metal bolts for a fence, gate

APPENDIX 2: PHOTOGRAPHIC RECORD

Shot	Initial	Context/description	Taken from
001	LW	West Range, middle section	SW
002		West Range, north end	SW
003		West Range, south end	SW
004		West Range	SW
005		West Range	SW
006		General Shot of West Range	S
007		General Shot of West Range	NW
008		General Shot of West Range	NW
009		Hipped end of West Range	NW
010		Hipped end of West Range	NW
011		Drain/well feature	NW
012		General Shot of West Range	N
013		Hipped end of West Range, east end	NW
014		General Shot of West Range	N
015		West Range, north end showing brick arch	NE
016		West Range, middle, showing brick arch	NE
017		West Range, south end showing brick arch	NE
018		West Range, south end showing brick arch	NE
019		General shot of Farm steading	N
020		East Range, west end	NW
021		East Range, middle	NW
022		East Range, east end	NW
023		East Range, east end	NW
024		East Range, gable end	NE
025		General shot of Unit H	NW
026		Unit H, northwest facing internal wall	NW
027		Unit H, northwest facing internal wall	NW
028		Unit H, gable dividing wall	NE
029		Unit H, gable wall	SW
030		General shot of Unit G	N
031		Unit G, interior shot	NW
032		Unit G, interior shot	NE
033		General shot of Unit F	SW
034		Unit F, interior shot	NW
035		Unit F, interior shot	NW
036		Unit F, interior shot	NW
037		Unit F, interior shot	NE
038		Unit F, interior shot	SW
039		General shot of Unit F looking over to Unit G	E
040		Floor detail in Unit F	NW
041	LW	Floor detail in Unit F	SW
042	LW	General shot of Unit D	SE
043		Roof detain in West Range	SE
044		Roof detain in West Range	SE
045		Unit D, Interior shot	NE
046		Horse engine mechanics	NE
047		Horse engine mechanics	NE
048		Stone slabs below horse engine. Floor detail	NE
049		Unit D, Interior shot	NW
050		Unit D, Interior shot	NW
051		Unit D, Interior shot, stairway	SW
052		Unit D, Arched entrance	SW
053		General shot of Unit D	S

054		Roof detail showing beam 'built' into brick, Unit D	S
055		General shot of Unit J, showing doorway above arched entrance in Unit D	NW
056		General shot of Unit J	S
057		General shot of Unit J	E
058		General shot of Unit J	E
059		General shot of Unit J	S
060		Roof Detail above unit J	NW
061		Roof Detail above unit J	NW
062		Roof detail above entrance to Unit J	N
063		Unit D, Roof Structure, King posts on beam	N
064		Unit D and Unit I, general shot	N
065		General shot of Unit D	NE
066		Unit I, interior shot	NE
067		General shot from Unit I looking over towards Unit J	SE
068		Corner Roof detail in Unit I	NE
069		Wooden staircase leading to Unit I from Unit F	NE
070		Unit E, Interior shot	N
071		Unit C, Interior shot	NW
072		Unit C, Interior shot	NW
073		Unit C, Interior shot, floor detail	NW
074		Unit C, Interior shot, showing first floor beams	SE
075		Unit C, Interior Shot	NE
076		Certificates for Gaming pinned to floor joists	NE
077		Certificates for Gaming pinned to floor joists	NE
078		General shot showing double arched brick door	N
079		General shot of Unit A	N
080		General shot of Unit A	N
081		General shot of Unit A	NE
082		General shot of West Range	S
083		Door detail of Unit B showing read sandstone quoins	NW
084	LW	Cobbling surface outside West Range	N
085	LW	Concrete hard standing in Courtyard	N
086		Quoin detail and drain pipe, west range	NE
087		Roof detail in Unit H	NW
088		Roof detail in Unit H	W
089		Roof detail in Unit H	S
090		Roof detail in Unit H	SW
091		Roof detail in Unit G	N
092		Roof detail in Unit G	W
093		Roof detail in Unit G	NW
094		Roof detail in Unit G	SE
095		Carpentry marks in lintel, above door 20	N
096		Roof detail in Unit G, looking over to Unit F	NW
097		Carpentry marks in beam, Unit F	NW
098		Carpentry marks in beam, Unit F	S
099		Slots in overhead beam, Unit F	SW
100		Uneven beam with cut marks, next to wooden steps, Unit F	N
101		Drain pipe detail, West Range	NW
102		Drain detail with dressed stone surround	NW
103		Drain detail with dressed stone surround	NW
104		Drain detail with dressed stone surround	NW
105		Roof detail showing skylights, west range	NE
106		Boundary wall 036	W
107		Boundary wall 036	N
108		Brick blocking in West Range	W

109		Small hole in stonework, horse engine?	W
110		General shot of West Range	S
111		Bearing box inserted into the barn wall	NE
112		Close up on a hole for drive shaft from the horse engine	NE
113		Close up on a hole for drive shaft from the horse engine	NE
114		Bearing box inserted into the barn wall	NE
115		Bearing box mid way up the barn wall	NE
116		Distance shot of the bearing box on the barn wall	NE
117		Oblique shot of upper bearing box on the barn wall	E
118		Double hinged bolts for gate? East Range	NE
119		Door 20 on East Range	NW
120		Hipped end of West Range	NW
121		Hipped end of West Range	NW
122		Hipped end of West Range	NW
123		Hipped end of West Range	NW
124		Hipped end of West Range	NW
125		General shot of West Range	N
126		Hipped end of West Range	NW
127		Hipped end of West Range	NW
128	LW	General shot of West Range	NW



Plate 1 - General view of the east-facing elevation of the barn



Plate 2 - General view of the west-facing elevation and barn gable



Plate 3 - Close-up of the two arched barn doorways

Key:

Fig. No:

Revision:

A

Client:

Mr Giles Finnegan

Title:

Plates 1-3

Project:

Hollies Barn, Cargo, Near Carlisle

Scale:



CFA ARCHAEOLOGY LTD
The Old Engine House
Eskmills Park
Musselburgh
East Lothian, EH21 7PQ
t: 0131 273 4380
f: 0131 273 4381
e: info@cfa-archaeology.co.uk
w: www.cfa-archaeology.co.uk

Drawn by:

LW

Page No:



Plate 4 - General view of the garage doorways on the east range



Plate 5 - East range gable and boundary wall



Plate 6 - Interior shot of Unit H

Key:

Scale:

Fig. No:

Revision:

A

Client:

Mr Giles Finnegan

Title:

Plates 4-6

Project:

Hollies Barn, Cargo, Near Carlisle



CFA ARCHAEOLOGY LTD
The Old Engine House
Eskmills Park
Musselburgh
East Lothian, EH21 7PQ
t: 0131 273 4380
f: 0131 273 4381
e: info@cfa-archaeology.co.uk
w: www.cfa-archaeology.co.uk

Drawn by:

LW

Page No:



Plate 7 - Interior shot of Unit G



Plate 8 - Interior of the barn looking south



Plate 9 - Interior of the barn looking west

Key:

Fig. No:

Revision:

A

Client:

Mr Giles Finnegan

Title:

Plates 7-9

Project:

Hollies Barn, Cargo, Near Carlisle

Scale:



CFA ARCHAEOLOGY LTD
The Old Engine House
Eskmills Park
Musselburgh
East Lothian, EH21 7PQ
t: 0131 273 4380
f: 0131 273 4381
e: info@cfa-archaeology.co.uk
w: www.cfa-archaeology.co.uk

Drawn by:

LW


Page No:

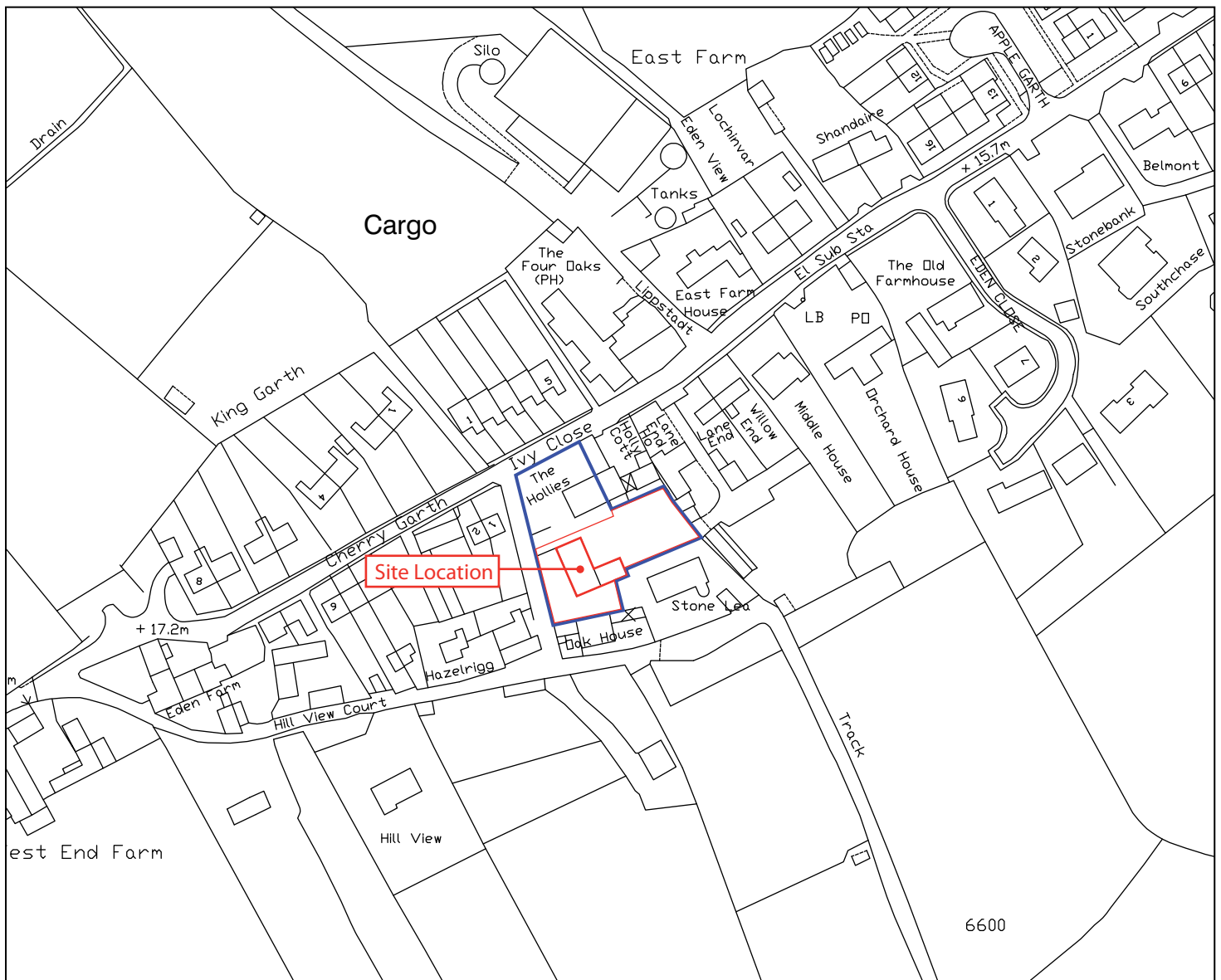
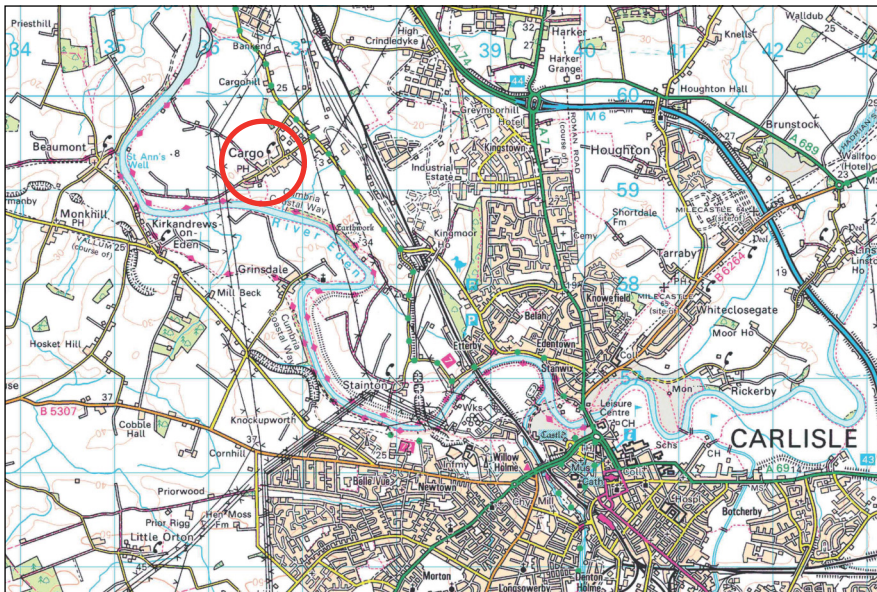


Plate 10 - Oil stained bearing plate inserted in the barn wall



Plate 11 - General view of the A-frame roof structure

Key:	Fig. No:	Revision: A	Client: Mr Giles Finnegan	 CFA ARCHAEOLOGY LTD The Old Engine House Eskmills Park Musselburgh East Lothian, EH21 7PQ t: 0131 273 4380 f: 0131 273 4381 e: info@cfa-archaeology.co.uk w: www.cfa-archaeology.co.uk
	Title: Plates 10-11			
	Project: Hollies Barn, Cargo, Near Carlisle			
Scale:	Drawn by: LW		Page No:	



Key:



Fig. No:

1

Revision:

A

Client:

Mr Giles Finnegan

Title:

Location map

Project:

Hollies Barn, Cargo, Near Carlisle



CFA ARCHAEOLOGY LTD
The Old Engine House
Eskmills Park
Musselburgh
East Lothian, EH21 7PQ

t: 0131 273 4380
f: 0131 273 4381
e: info@cfa-archaeology.co.uk
w: www.cfa-archaeology.co.uk

Scale:

Drawn by:

LW

Page No:

6600



Fig 2a - Tithe Map, 1839

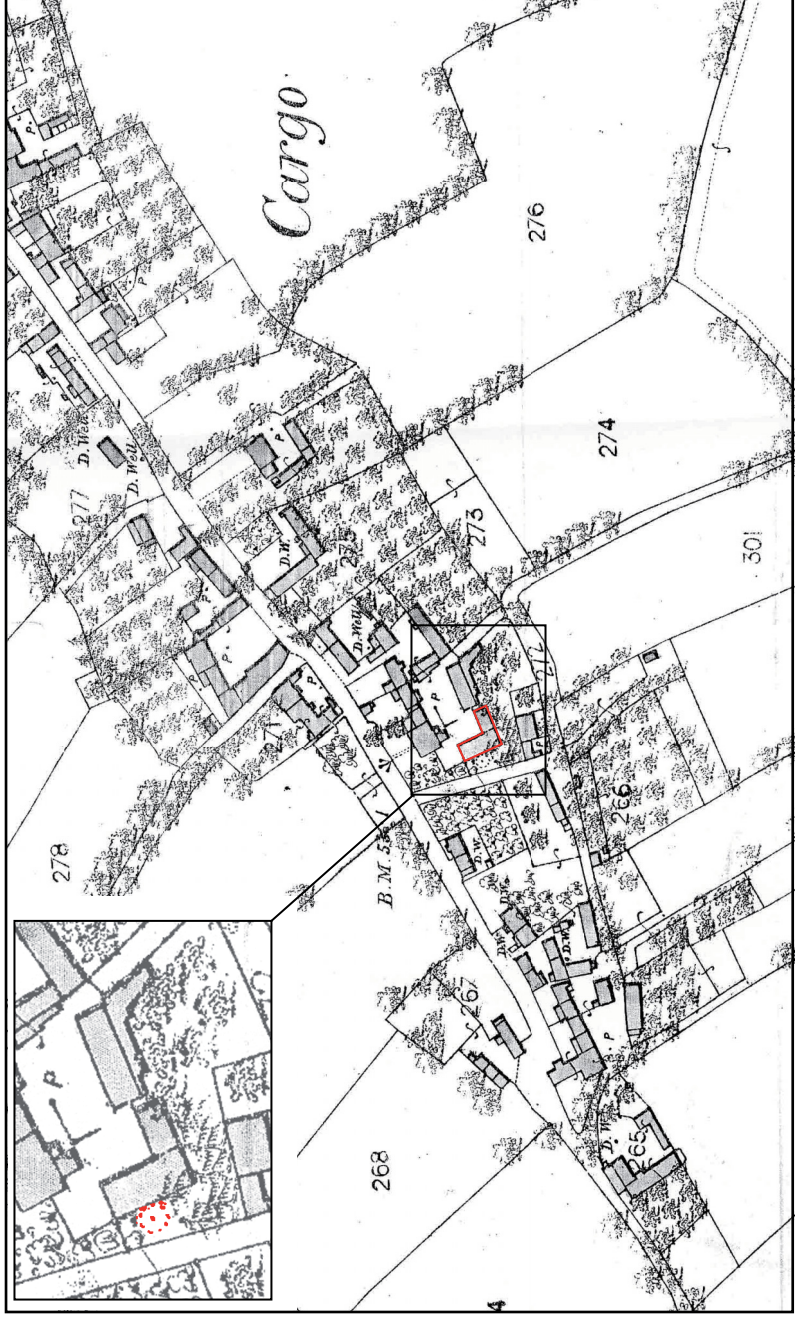


Fig 2b - 1st Edition Ordnance Survey, 1865. Enlarged area showing Horse-Engine

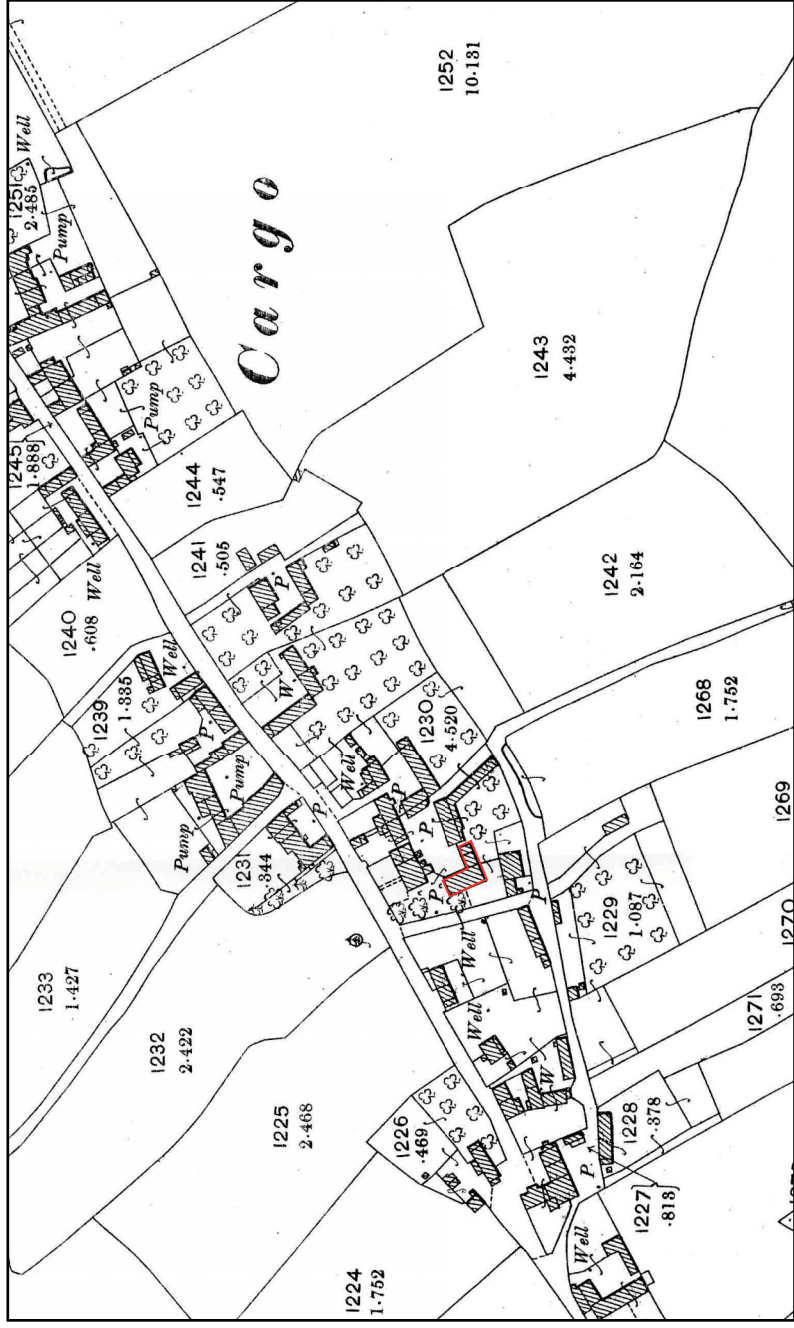


Fig 2c - 2nd Edition Ordnance Survey, 1901

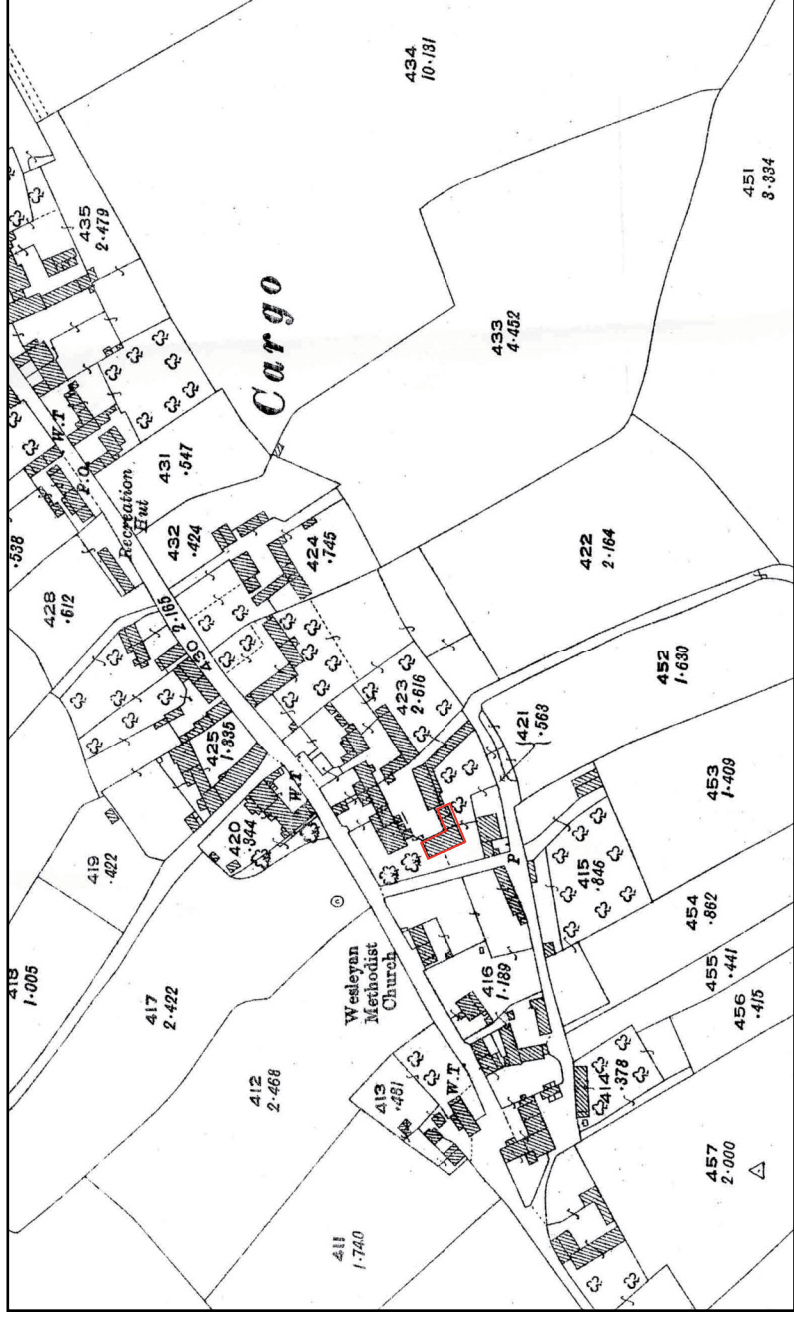


Fig 2d - 3rd Edition Ordnance Survey, 1926



Key:

Fig. No: 2

Revision: A

Page No:

Drawn by: LW

Scale:

Title:
Historical Map Regression

CFA
ARCHAEOLOGY LTD
The Old Engine House
Essexmills Park
Musselburgh
East Lothian, EH21 7PO
t: 0131 273 4380
f: 0131 273 4381
e: info@cfa-archaeology.co.uk
w: www.cfa-archaeology.co.uk

Project:
Holies Barn, Cargo, Near Cartisle

Client:
Mr Giles Finnegan

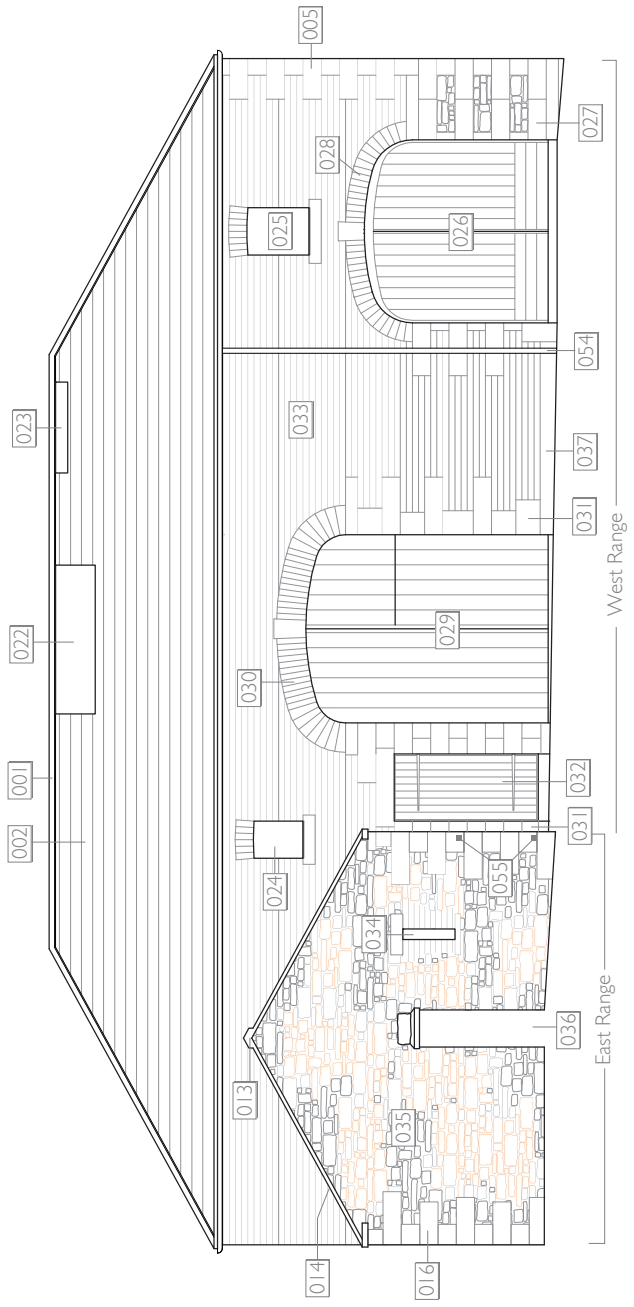


Fig 3a - East-facing Elevation

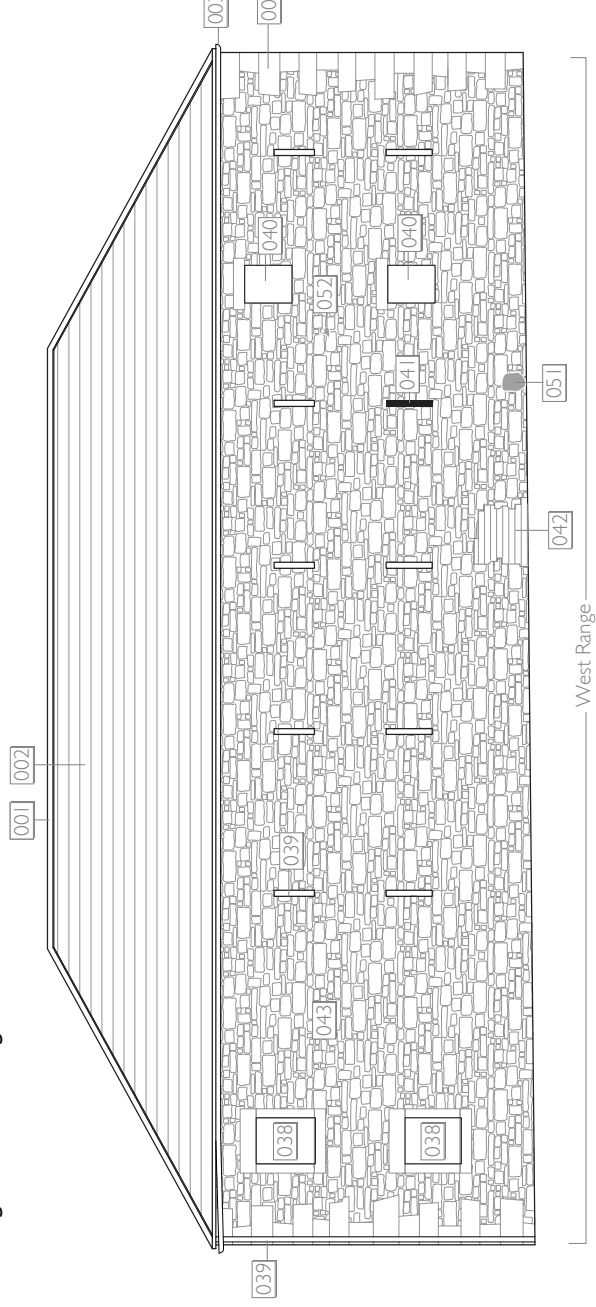


Fig 3c - West-facing Elevation

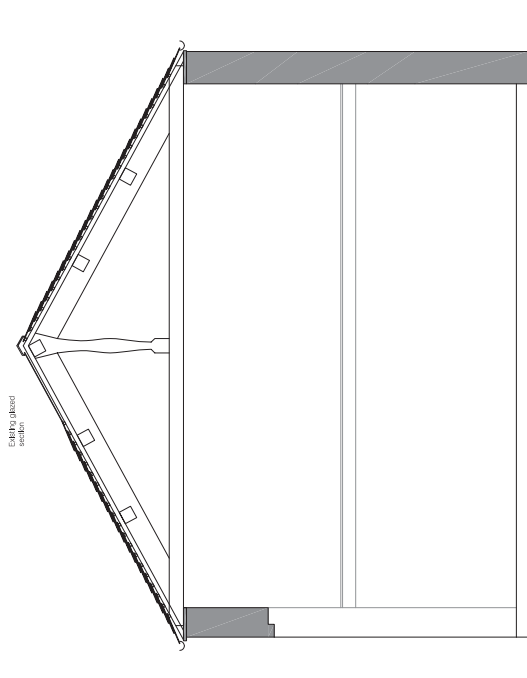


Fig 3e - Cross section through roof A-A

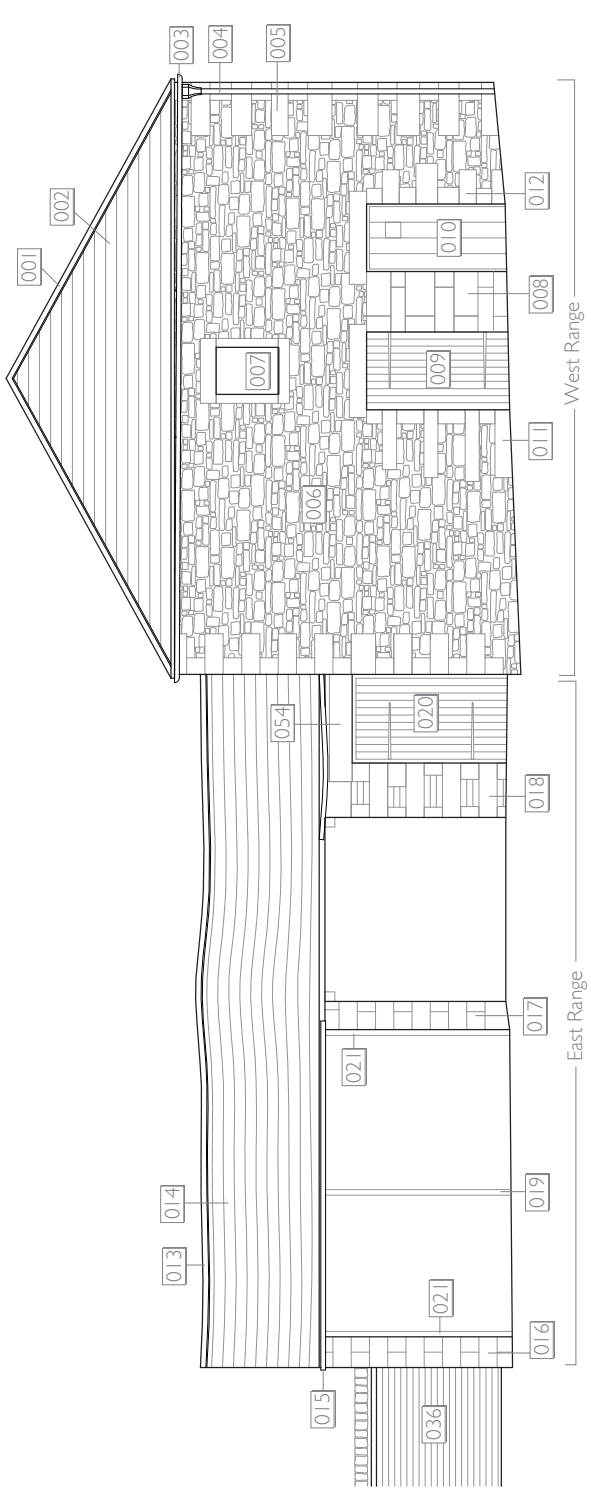


Fig 3b - North-facing Elevation

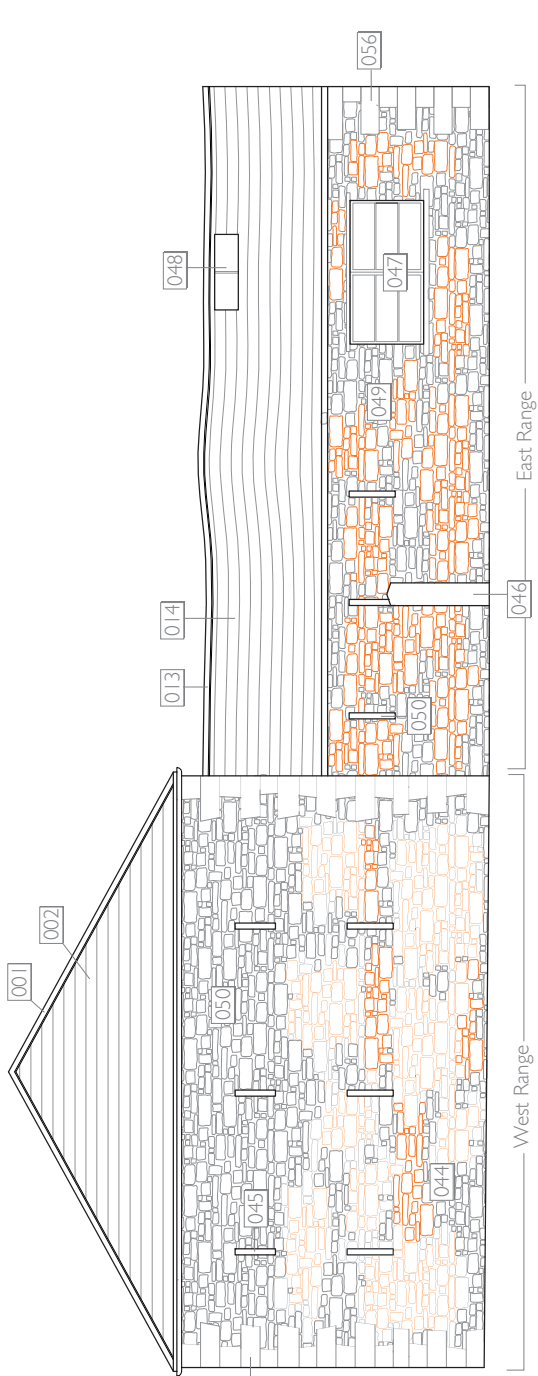


Fig 3d - South-facing Elevation

Key:	
	Stone
	Slate Roof
	Brick
	Stone & Pebbles



Fig. No:	3	Revision:	A	Title:	External Elevation Drawings	Drawn by:	LW	Page No.:	
CFA ARCHAEOLOGY LTD The Old Engine House Eskmills Park Muskelburgh East Lothian, EH21 7PQ t: 0131 273 4380 e: info@cfa-archaeology.co.uk w: www.cfa-archaeology.co.uk		Scale:		0		Client:		Mr Giles Finnegan	
Project:		Hollies Barn, Cargo, Near Carlisle		Scale:		0		5 m	

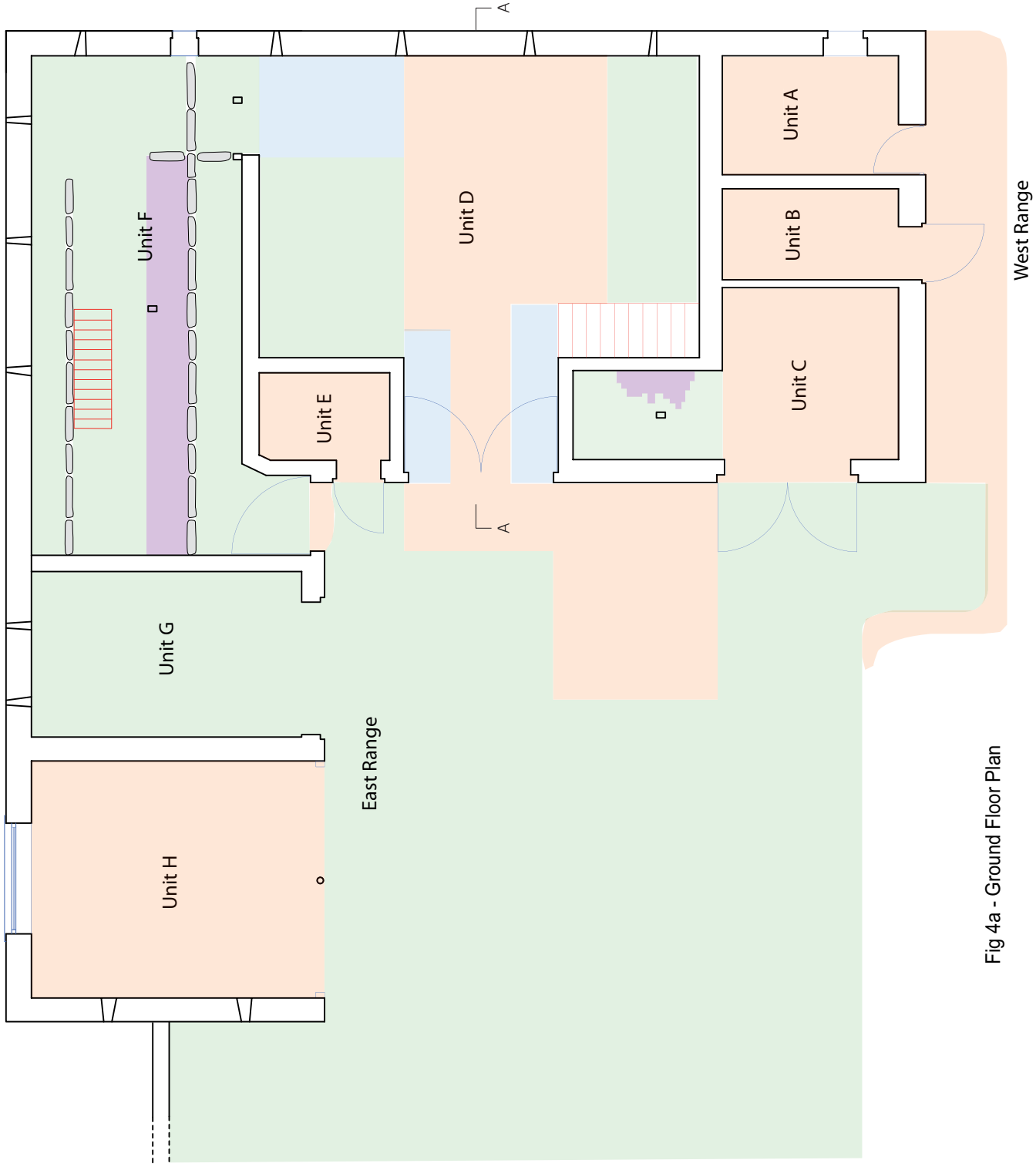


Fig 4a - Ground Floor Plan

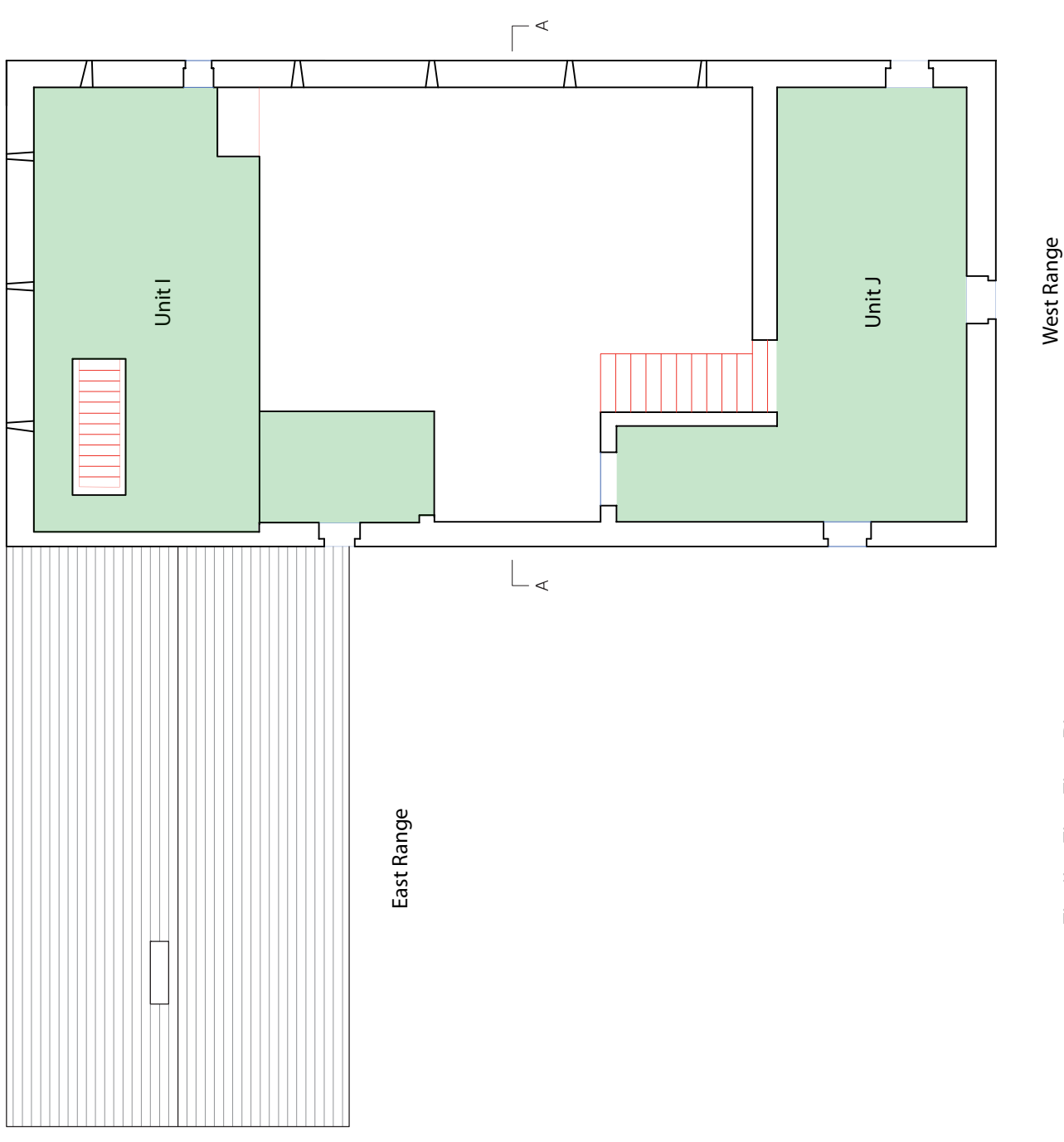


Fig 4b - First Floor Plan



IFA-registered archaeological organisation

Key:

- Cobble, 19th Century
- Flagstone, 19th Century
- Concrete, 20th Century
- Brick, 20th Century



The copyright in this document (including its electronic form) shall remain vested in CFA Archaeology Ltd (CFA) but the Client shall have a licence to copy and use the document for the purpose for which it was provided. CFA shall not be liable for the use by any person of this document for any purpose other than that for which the same was provided by CFA. This document shall not be reproduced in whole or in part or relied upon by third parties for any use whatsoever without the express written authority of CFA.

CFA
ARCHAEOLOGY LTD

Revision: **A**
CFA ARCHAEOLOGY LTD
The Old Engine House
Eskmills Park
Muselburgh
East Lothian, EH21 7PQ
t: 0131 273 4380
f: 0131 273 4381
e: info@cfa-archaeology.co.uk
w: www.cfa-archaeology.co.uk

Fig. No: **4**
Title: **Ground and First Floor Plan**
Project: **Hollies Barn, Cargro, Near Carlisle**

Drawn by: **LW**
Scale: **0**
Client: **Mr Giles Finnegan**

Page No:



001.JPG



002.JPG



003.JPG



004.JPG



005.JPG



006.JPG



007.JPG



008.JPG



009.JPG



010.JPG



011.JPG



012.JPG



013.JPG



014.JPG



015.JPG



016.JPG



017.JPG



018.JPG



019.JPG



020.JPG



021.JPG



022.JPG



023.JPG



024.JPG



025.JPG

Key:

Fig. No:

Revision:

A

Client:

Mr Giles Finnegan

Title:

Contact Sheet 1

Project:

Hollies Barn, Cargo, Near Carlisle

Scale:



CFA ARCHAEOLOGY LTD
The Old Engine House
Eskmills Park
Musselburgh
East Lothian, EH21 7PQ
t: 0131 273 4380
f: 0131 273 4381
e: info@cfa-archaeology.co.uk
w: www.cfa-archaeology.co.uk

Drawn by:

LW

Page No:



026.JPG



027.JPG



028.JPG



029.JPG



030.JPG



031.JPG



032.JPG



033.JPG



034.JPG



035.JPG



036.JPG



037.JPG



038.JPG



039.JPG



040.JPG



041.JPG



042.JPG



043.JPG



044.JPG



045.JPG



046.JPG



047.JPG



048.JPG



049.JPG



050.JPG

Key:

Scale:

Fig. No:

Revision:

A

Client:

Mr Giles Finnegan

Title:

Contact Sheet 2

Project:

Hollies Barn, Cargo, Near Carlisle



CFA ARCHAEOLOGY LTD
The Old Engine House
Eskmills Park
Musselburgh
East Lothian, EH21 7PQ
t: 0131 273 4380
f: 0131 273 4381
e: info@cfa-archaeology.co.uk
w: www.cfa-archaeology.co.uk

Drawn by:

LW

Page No:



051.JPG



052.JPG



053.JPG



054.JPG



055.JPG



056.JPG



057.JPG



058.JPG



059.JPG



060.JPG



061.JPG



062.JPG



063.JPG



064.JPG



065.JPG



066.JPG



067.JPG



068.JPG



069.JPG



070.JPG



071.JPG



072.JPG



073.JPG



074.JPG



075.JPG

Key:

Scale:

Fig. No:

Revision:

A

Client:

Mr Giles Finnegan

Title:

Contact Sheet 3

Project:

Hollies Barn, Cargo, Near Carlisle



CFA ARCHAEOLOGY LTD
The Old Engine House
Eskmills Park
Musselburgh
East Lothian, EH21 7PQ
t: 0131 273 4380
f: 0131 273 4381
e: info@cfa-archaeology.co.uk
w: www.cfa-archaeology.co.uk

Drawn by:

LW

Page No:



076.JPG



077.JPG



078.JPG



079.JPG



080.JPG



081.JPG



082.JPG



083.JPG



084.JPG



085.JPG



086.JPG



087.JPG



088.JPG



089.JPG



090.JPG



091.JPG



092.JPG



093.JPG



094.JPG



095.JPG



096.JPG



097.JPG



098.JPG



099.JPG



100.JPG

Key:

Fig. No:

Revision:

A

Client:

Mr Giles Finnegan

Title:

Contact Sheet 4

Project:

Hollies Barn, Cargo, Near Carlisle

Scale:



CFA ARCHAEOLOGY LTD
The Old Engine House
Eskmills Park
Musselburgh
East Lothian, EH21 7PQ
t: 0131 273 4380
f: 0131 273 4381
e: info@cfa-archaeology.co.uk
w: www.cfa-archaeology.co.uk

Drawn by:

LW

Page No:



101.JPG



102.JPG



103.JPG



104.JPG



105.JPG



106.JPG



107.JPG



108.JPG



109.JPG



110.JPG



111.JPG



112.JPG



113.JPG



114.JPG



115.JPG



116.JPG



117.JPG



118.JPG



119.JPG



120.JPG



121.JPG



122.JPG



123.JPG



124.JPG



125.JPG

Key:

Scale:

Fig. No:

Revision:

A

Client:

Mr Giles Finnegan

Title:

Contact Sheet 5

Project:

Hollies Barn, Cargo, Near Carlisle



CFA ARCHAEOLOGY LTD
The Old Engine House
Eskmills Park
Musselburgh
East Lothian, EH21 7PQ
t: 0131 273 4380
f: 0131 273 4381
e: info@cfa-archaeology.co.uk
w: www.cfa-archaeology.co.uk

Drawn by:

LW

Page No:



126.JPG

127.JPG

128.JPG

Key:

Fig. No:

Revision:

A

Client:

Mr Giles Finnegan

Title:

Contact Sheet 6

Project:

Hollies Barn, Cargo, Near Carlisle

Scale:



CFA ARCHAEOLOGY LTD
 The Old Engine House
 Eskmills Park
 Musselburgh
 East Lothian, EH21 7PQ
 t: 0131 273 4380
 f: 0131 273 4381
 e: info@cfa-archaeology.co.uk
 w: www.cfa-archaeology.co.uk

Drawn by:

LW

Page No: