

Database documentation for the Archaeology Data Service

Information was collected from selected animal bone reports and entered into a relational database. Information was recorded at two main hierarchical levels; the 'site' and the 'assemblage', which allowed for multiple faunal assemblages to be recorded from each site excavation report (where the faunal remains from a site had been subdivided into several smaller assemblages). Thus the database contains many more 'assemblage' records than it does 'site' records. Subdivisions of the faunal remains from a site into several distinct assemblage records were made predominantly on the grounds of date. Each 'site' record corresponds to a major excavation or animal bone report (bibliographic references for these reports are provided in the database). Data pertaining to the excavation site as a whole (e.g. its geographical and geological location, overall bone preservation, methods of excavation, location of site archive and full bibliographic reference) were collected in the 'SITE LEVEL INFO' table within the database. Data pertaining specifically to the individual animal bone assemblages (e.g. date, site/monument type, predominant feature type, faunal assemblage size and quantification of major taxonomic groups) were collected in the 'ASSEMBLAGE LEVEL INFO' table. A third hierarchical level of 'ASSEMBLAGE DETAIL' tables, provides additional details of the faunal data (e.g. species present within the main taxonomic groups; quantification, body part representation, ageing, metrical and butchery information for the main domesticates; and evidence for special deposits and/or Associated Bone Groups) which were recorded, where available, for each assemblage. Data in separate tables were linked via individual identification numbers for each site and assemblage level record. Additional supplementary information and look-up tables for values and fields used in these three groups of tables are also provided. (See Relationships and Database Guide, below).

Site level information table

Name of table / worksheet 1:	SITE LEVEL INFO	
Purpose of table/worksheet:	Records site level information	
Number of rows of data:	108	
Primary key (<i>database only</i>):	site id	
Name of field	Full description of field and codes or terminology used	Data type and field length (<i>database only</i>)
site id	unique site code	AutoNumber
name of site	name of site given in published report	Text (50)
county	modern county in which site is located	Text (50)
National Grid Reference Sheet number	Ordnance survey (OS) grid two-letter sheet code	Text (2)
National Grid Reference Eastings	OS grid Eastings (up to 4 figures)	Text (4)

National Grid Reference Northings	OS grid Northings (up to 4 figures)	Text (4)
altitude (m asl)	approximate Height OD (Ordnance Datum) in meters	Number
predominant geology/soil type	description of predominant soil type and/or underlying geology	Text (50)
period (broad date range)	period of occupation/use of site (Follow RCHME & MNR thesaurus). Choose from value list: prehistoric; Bronze Age; Iron Age; Bronze Age - Iron Age; Iron Age-Roman; multiperiod	Text (50)
date (detail)	more precise period and/or dates in years BC & AD for main occupation of site, where reported	Text (50)
method of recovery	recovery method(s) for faunal remains	Text (50)
preservation	reported state of preservation of the faunal remains from the site. Choose from value list: unspecified; very good; good; poor; very poor; variable, mainly good; variable, mainly poor	Text (50)
gnawing	reported overall extent of canid alteration (gnawing damage) of the faunal remains from the site	Text (50)
author	author(s) of published Bone Report	Text (50)
year	year of publication of Bone Report	Text (5)
publication reference	publication reference for Bone Report(s) used as data source	Memo
site notes	additional notes for each site record where relevant	Text (255)
location of archive and assemblage	location of site archive and assemblage. (included where this information available from published report or ADS records).	Text (255)

Assemblage level information table

Name of table / worksheet 2:	ASSEMBLAGE LEVEL INFO	
Purpose of table/worksheet:	Records Assemblage level information	
Number of rows of data:	154	
Primary key (database only):	assemblage id	
Name of field	Full description of field and codes or terminology used	Data type and field length (database only)
site id	site code (duplicate values allowed where one site has many assemblages recorded)	Number
assemblage id	unique assemblage code	AutoNumber
period	period code which best describes reported date of majority of faunal assemblage. Choose from value list: BA-IA; BA; IA; MBA; LBA; EIA; MIA; LIA; MBA-LBA; LBA-EIA; EIA-MIA; MIA-LIA; LIA-ERB	Text (10)
date	more precise period and/or dates in years BC & AD for assemblage, where reported	Text (20)
site type	type of site (monument type) from which the assemblage is	Text (50)

	derived. (Follow NMR thesaurus)	
predominant type of context	archaeological feature type from which majority of faunal assemblage is derived. Choose from value list: unspecified; ditches/gullies; pits; well; postholes; occupation layers; dump/midden; graves	Text (35)
size of assemblage (n)	Total NISP for all taxa in assemblage. Where possible, NISP data are for hand recovered fragments only and excludes sieved samples.	Number
n mammals	Total NISP for all mammals in assemblage. Where possible, NISP data are for hand recovered fragments only and excludes sieved samples.	Number
n birds	Total NISP for all birds in assemblage. Where possible, NISP data are for hand recovered fragments only and excludes sieved samples.	Number
n fish	Total NISP for all fish in assemblage. Where possible, NISP data are for hand recovered fragments only and excludes sieved samples.	Number
small (rodent sized) mammal	records whether small (rodent sized) mammal remains were recovered. yes=present	Yes/No
amphibian	records whether amphibian remains were recovered. yes=present	Yes/No
n domestic mammals	Total NISP for all domestic mammals in assemblage. Where possible, NISP data are for hand recovered fragments only and excludes sieved samples.	Number
n wild mammals	Total NISP for all wild mammals in assemblage. Where possible, NISP data are for hand recovered fragments only and excludes sieved samples.	Number
assemblage notes	additional notes for each assemblage record where relevant	Text (255)

Assemblage detail tables

Name of table / worksheet 3:	ASSEMBLAGE DETAIL - MAMMALS PRESENT	
Purpose of table/worksheet:	Records the mammal taxa reported for each assemblage.	
Number of rows of data:	150	
Primary key (database only):	none	
Name of field	Full description of field and codes or terminology used	Data type and field length (database only)
assemblage id	unique assemblage code	Number
cow	reported presence of this taxon. 'yes' = present	Yes/No
sheep/goat	reported presence of this taxon. 'yes' = present	Yes/No
pig	reported presence of this taxon. 'yes' = present	Yes/No
horse	reported presence of this taxon. 'yes' = present	Yes/No
dog	reported presence of this taxon. 'yes' = present	Yes/No
cat	reported presence of this taxon. 'yes' = present	Yes/No
sheep	reported presence of this taxon. 'yes' = present	Yes/No

goat	reported presence of this taxon. 'yes' = present	Yes/No
red deer	reported presence of this taxon. 'yes' = present	Yes/No
roe deer	reported presence of this taxon. 'yes' = present	Yes/No
wild boar	reported presence of this taxon. 'yes' = present	Yes/No
fox	reported presence of this taxon. 'yes' = present	Yes/No
hare	reported presence of this taxon. 'yes' = present	Yes/No
beaver	reported presence of this taxon. 'yes' = present	Yes/No
bear	reported presence of this taxon. 'yes' = present	Yes/No
badger	reported presence of this taxon. 'yes' = present	Yes/No
otter	reported presence of this taxon. 'yes' = present	Yes/No
polecat	reported presence of this taxon. 'yes' = present	Yes/No
pine marten	reported presence of this taxon. 'yes' = present	Yes/No
weasel	reported presence of this taxon. 'yes' = present	Yes/No
stoat	reported presence of this taxon. 'yes' = present	Yes/No
mustelid unspecified	reported presence of this taxon. 'yes' = present	Yes/No
cetacean unspecified	reported presence of this taxon. 'yes' = present	Yes/No
seal unspecified	reported presence of this taxon. 'yes' = present	Yes/No
hedgehog	reported presence of this taxon. 'yes' = present	Yes/No
mole	reported presence of this taxon. 'yes' = present	Yes/No
water vole	reported presence of this taxon. 'yes' = present	Yes/No
field vole	reported presence of this taxon. 'yes' = present	Yes/No
bank vole	reported presence of this taxon. 'yes' = present	Yes/No
vole unspecified	reported presence of this taxon. 'yes' = present	Yes/No
field mouse	reported presence of this taxon. 'yes' = present	Yes/No
wood mouse	reported presence of this taxon. 'yes' = present	Yes/No
house mouse	reported presence of this taxon. 'yes' = present	Yes/No
mouse unspecified	reported presence of this taxon. 'yes' = present	Yes/No
common shrew	reported presence of this taxon. 'yes' = present	Yes/No
small mammal unspecified	reported presence of this taxon. 'yes' = present	Yes/No
rat	reported presence of this taxon. 'yes' = present	Yes/No
rabbit	reported presence of this taxon. 'yes' = present	Yes/No
fallow deer	reported presence of this taxon. 'yes' = present	Yes/No
aurochs	reported presence of this taxon. 'yes' = present	Yes/No
mammal notes	additional notes for each record where relevant	Text (255)

Name of table / worksheet 4:	ASSEMBLAGE DETAIL - BIRDS PRESENT	
Purpose of table/worksheet:	Records the bird taxa reported for each assemblage.	
Number of rows of data:	114	
Primary key (database only):	none	
Name of field	Full description of field and codes or terminology used	Data type and field length (database only)
assemblage id	unique assemblage code	Number

domestic fowl	reported presence of this taxon. 'yes' = present	Yes/No
pigeon	reported presence of this taxon. 'yes' = present	Yes/No
woodpigeon	reported presence of this taxon. 'yes' = present	Yes/No
pigeon unspecified	reported presence of this taxon. 'yes' = present	Yes/No
partridge	reported presence of this taxon. 'yes' = present	Yes/No
quail	reported presence of this taxon. 'yes' = present	Yes/No
black grouse	reported presence of this taxon. 'yes' = present	Yes/No
red grouse	reported presence of this taxon. 'yes' = present	Yes/No
mallard/domestic teal	reported presence of this taxon. 'yes' = present	Yes/No
other duck	reported presence of this taxon. 'yes' = present	Yes/No
duck unspecified	reported presence of this taxon. 'yes' = present	Yes/No
goose	reported presence of this taxon. 'yes' = present	Yes/No
swan	reported presence of this taxon. 'yes' = present	Yes/No
coot	reported presence of this taxon. 'yes' = present	Yes/No
moorhen	reported presence of this taxon. 'yes' = present	Yes/No
heron	reported presence of this taxon. 'yes' = present	Yes/No
crane	reported presence of this taxon. 'yes' = present	Yes/No
diver	reported presence of this taxon. 'yes' = present	Yes/No
raven	reported presence of this taxon. 'yes' = present	Yes/No
crow	reported presence of this taxon. 'yes' = present	Yes/No
rook	reported presence of this taxon. 'yes' = present	Yes/No
crow/rook	reported presence of this taxon. 'yes' = present	Yes/No
jackdaw	reported presence of this taxon. 'yes' = present	Yes/No
jay	reported presence of this taxon. 'yes' = present	Yes/No
blackbird	reported presence of this taxon. 'yes' = present	Yes/No
starling	reported presence of this taxon. 'yes' = present	Yes/No
corvid unspecified	reported presence of this taxon. 'yes' = present	Yes/No
thrush	reported presence of this taxon. 'yes' = present	Yes/No
redwing	reported presence of this taxon. 'yes' = present	Yes/No
turdid unspecified	reported presence of this taxon. 'yes' = present	Yes/No
shrike	reported presence of this taxon. 'yes' = present	Yes/No
other/small passerine	reported presence of this taxon. 'yes' = present	Yes/No
buzzard	reported presence of this taxon. 'yes' = present	Yes/No
kestrel	reported presence of this taxon. 'yes' = present	Yes/No
red kite	reported presence of this taxon. 'yes' = present	Yes/No
sparrowhawk	reported presence of this taxon. 'yes' = present	Yes/No
raptor unspecified	reported presence of this taxon. 'yes' = present	Yes/No
white tailed eagle	reported presence of this taxon. 'yes' = present	Yes/No
tawny owl	reported presence of this taxon. 'yes' = present	Yes/No
owl unspecified	reported presence of this taxon. 'yes' = present	Yes/No
golden plover	reported presence of this taxon. 'yes' = present	Yes/No
grey plover	reported presence of this taxon. 'yes' = present	Yes/No
lapwing	reported presence of this taxon. 'yes' = present	Yes/No
plover unspecified	reported presence of this taxon. 'yes' = present	Yes/No
woodcock	reported presence of this taxon. 'yes' = present	Yes/No
snipe	reported presence of this taxon. 'yes' = present	Yes/No
curlew	reported presence of this taxon. 'yes' = present	Yes/No

wader unspecified	reported presence of this taxon. 'yes' = present	Yes/No
herring gull	reported presence of this taxon. 'yes' = present	Yes/No
kittiwake	reported presence of this taxon. 'yes' = present	Yes/No
other gull	reported presence of this taxon. 'yes' = present	Yes/No
cormorant	reported presence of this taxon. 'yes' = present	Yes/No
gannet	reported presence of this taxon. 'yes' = present	Yes/No
guillemot	reported presence of this taxon. 'yes' = present	Yes/No
razorbill	reported presence of this taxon. 'yes' = present	Yes/No
puffin	reported presence of this taxon. 'yes' = present	Yes/No
other seabird	reported presence of this taxon. 'yes' = present	Yes/No
cuckoo	reported presence of this taxon. 'yes' = present	Yes/No
oyster catcher	reported presence of this taxon. 'yes' = present	Yes/No
rail unspecified	reported presence of this taxon. 'yes' = present	Yes/No
stork	reported presence of this taxon. 'yes' = present	Yes/No
bird notes	additional notes for each record where relevant	Text (255)

Name of table / worksheet 5:	ASSEMBLAGE DETAIL - OTHER TAXA PRESENT	
Purpose of table/worksheet:	Records the other taxa (i.e. not bird or mammal) reported for each assemblage.	
Number of rows of data:	80	
Primary key (database only):	none	
Name of field	Full description of field and codes or terminology used	Data type and field length (database only)
assemblage id	unique assemblage code	Number
freshwater fish	reported presence of this taxon. 'yes' = present	Yes/No
sea fish	reported presence of this taxon. 'yes' = present	Yes/No
fish unspecified	reported presence of this taxon. 'yes' = present	Yes/No
fish notes	additional notes on fish taxa present, where relevant	Text (255)
frog	reported presence of this taxon. 'yes' = present	Yes/No
toad	reported presence of this taxon. 'yes' = present	Yes/No
frog/toad	reported presence of this taxon. 'yes' = present	Yes/No
amphibian unspecified	reported presence of this taxon. 'yes' = present	Yes/No
other taxa	reported presence of any other taxon not previously listed. 'yes' = present	Yes/No
other species notes	additional notes for each record where relevant	Text (255)

Name of table / worksheet 6:	ASSEMBLAGE DETAIL - QUANTIFICATION OF DOMESTICATES	
Purpose of table/worksheet:	Records NISP (Number of Identified Specimens) and MNI (Minimum Number of Individuals) counts reported for cow, sheep/goat, pig, horse, and dog from each faunal assemblage	
Number of rows of data:	151	

Primary key (database only):	none	
Name of field	Full description of field and codes or terminology used	Data type and field length (database only)
assemblage id	unique assemblage code	Number
NISP Cow	raw NISP count for this taxon (0 value indicates reported absence of taxon; blank value indicates lack of reported quantitative data where taxon is present, or potentially present in assemblage)	Number
NISP Sheep/goat	raw NISP count for this taxon (0 value indicates reported absence of taxon; blank value indicates lack of reported quantitative data where taxon is present, or potentially present in assemblage)	Number
NISP Pig	raw NISP count for this taxon (0 value indicates reported absence of taxon; blank value indicates lack of reported quantitative data where taxon is present, or potentially present in assemblage)	Number
NISP Horse	raw NISP count for this taxon (0 value indicates reported absence of taxon; blank value indicates lack of reported quantitative data where taxon is present, or potentially present in assemblage)	Number
NISP Dog	raw NISP count for this taxon (0 value indicates reported absence of taxon; blank value indicates lack of reported quantitative data where taxon is present, or potentially present in assemblage)	Number
MNI Cow	raw MNI count for this taxon (0 value indicates reported absence of taxon; blank value indicates lack of reported quantitative data where taxon is present, or potentially present in assemblage)	Number
MNI Sheep/goat	raw MNI count for this taxon (0 value indicates reported absence of taxon; blank value indicates lack of reported quantitative data where taxon is present, or potentially present in assemblage)	Number
MNI Pig	raw MNI count for this taxon (0 value indicates reported absence of taxon; blank value indicates lack of reported quantitative data where taxon is present, or potentially present in assemblage)	Number
MNI Horse	raw MNI count for this taxon (0 value indicates reported absence of taxon; blank value indicates lack of reported quantitative data where taxon is present, or potentially present in assemblage)	Number
MNI Dog	raw MNI count for this taxon (0 value indicates reported absence of taxon; blank value indicates lack of reported quantitative data where taxon is present, or potentially present in assemblage)	Number
percentages only	indicates % NISP and/or %MNI counts have been reported, but not raw counts. Where 'yes', the % values are recorded in this table in place of raw counts	Yes/No
derived data	indicates graphical representations of NISP and/or MNI counts have been reported, but not raw counts. Where 'yes', the derived counts are recorded in this table in place of raw counts	Yes/No

Name of table / worksheet 7:	ASSEMBLAGE DETAIL - BODY PART REPRESENTATION	
Purpose of table/worksheet:	Records details of body part representation reported for cow, sheep/goat, pig and horse from each faunal assemblage	
Number of rows of data:	124	
Primary key (database only):	none	
Name of field	Full description of field and codes or terminology used	Data type and field length (database only)
assemblage id	unique assemblage code	Number
cattle body part representation	description of body part representation profile for this taxon	Text (50)
sheep/goat body part representation	description of body part representation profile for this taxon	Text (50)
pig body part representation	description of body part representation profile for this taxon	Text (50)
horse body part representation	description of body part representation profile for this taxon	Text (50)
notes	additional notes for each record where relevant	Text (255)

Name of table / worksheet 8:	ASSEMBLAGE DETAIL - AGE & SEX	
Purpose of table/worksheet:	Records details of age and sex information reported for cow, sheep/goat, pig and horse from each faunal assemblage	
Number of rows of data:	127	
Primary key (database only):	none	
Name of field	Full description of field and codes or terminology used	Data type and field length (database only)
assemblage id	unique assemblage code	Number
fusion data	indicates whether published ageing info includes epiphyseal fusion data	Yes/No
dental data	indicates whether published ageing info includes tooth eruption/wear data?	Yes/No
cattle toothwear method	toothwear ageing method used in the published bone report, and from which the data in this table is derived. Choose from value list: Grant;Halstead;Higham;Maltby;Silver;other;unspecified	Text (50)
cattle percentages only	indicates % counts have been published for this taxon, but not raw counts. Where 'yes', the % values are recorded in this table in place of raw counts	Yes/No
cattle derived data	indicates graphical representations published for this taxon, but not raw counts. Where 'yes', the derived counts are recorded in this table in place of raw counts	Yes/No

cattle fetal/neonate present	indicates whether fetal/neonatal remains of this taxon reported present in this assemblage	Yes/No
cattle juvenile n	raw count of juvenile individuals reported for this taxon. Raw count includes foetal/neonatal counts (0 value indicates recorded absence of individuals in this age class; blank value indicates lack of published data for this age class or taxon)	Number
cattle subadult n	raw count of subadult individuals reported for this taxon. (0 value indicates recorded absence of individuals in this age class; blank value indicates lack of published data for this age class or taxon)	Number
cattle young adult n	raw count of young adult individuals reported for this taxon. (0 value indicates recorded absence of individuals in this age class; blank value indicates lack of published data for this age class or taxon)	Number
cattle adult n	raw count of adult individuals reported for this taxon. Raw count includes old adult counts (0 value indicates recorded absence of individuals in this age class; blank value indicates lack of published data for this age class or taxon)	Number
cattle old adult present	indicates whether old adult remains of this taxon reported present in this assemblage	Yes/No
cattle age profile	description of population age profile for this taxon	Text (50)
sex cattle	description of population sex profile for this taxon	Text (50)
sheep/goat toothwear method	toothwear ageing method used in the published bone report, and from which the data in this table is derived. Choose from value list: Grant;Payne;Maltby;Silver;other;unspecified	Text (50)
sheep/goat percentages only	indicates % counts have been published for this taxon, but not raw counts. Where 'yes', the % values are recorded in this table in place of raw counts	Yes/No
sheep/goat derived data	indicates graphical representations published for this taxon, but not raw counts. Where 'yes', the derived counts are recorded in this table in place of raw counts	Yes/No
sheep/goat fetal/neonate present	indicates whether fetal/neonatal remains of this taxon reported present in this assemblage	Yes/No
sheep/goat juvenile n	raw count of juvenile individuals reported for this taxon. Raw count includes foetal/neonatal counts (0 value indicates recorded absence of individuals in this age class; blank value indicates lack of published data for this age class or taxon)	Number
sheep/goat subadult n	raw count of subadult individuals reported for this taxon. (0 value indicates recorded absence of individuals in this age class; blank value indicates lack of published data for this age class or taxon)	Number
sheep/goat young adult n	raw count of young adult individuals reported for this taxon. (0 value indicates recorded absence of individuals in this age class; blank value indicates lack of published data for this age class or taxon)	Number
sheep/goat adult n	raw count of adult individuals reported for this taxon. Raw count includes old adult counts (0 value indicates recorded absence of individuals in this age class; blank value indicates lack of published data for this age class or taxon)	Number
sheep/goat old adult present	indicates whether old adult remains of this taxon reported present in this assemblage	Yes/No
sheep/goat age	description of population age profile for this taxon	Text (50)

profile		
sex sheep	description of population sex profile for this taxon	Text (50)
pig toothwear method	toothwear ageing method used in the published bone report, and from which the data in this table is derived. Choose from value list: Grant;Maltby;Payne;Silver;other;unspecified	Text (50)
pig percentages only	indicates % counts have been published for this taxon, but not raw counts. Where 'yes', the % values are recorded in this table in place of raw counts	Yes/No
pig derived data	indicates graphical representations published for this taxon, but not raw counts. Where 'yes', the derived counts are recorded in this table in place of raw counts	Yes/No
pig fetal/neonate present	indicates whether fetal/neonatal remains of this taxon reported present in this assemblage	Yes/No
pig juvenile n	raw count of juvenile individuals reported for this taxon. Raw count includes foetal/neonatal counts (0 value indicates recorded absence of individuals in this age class; blank value indicates lack of published data for this age class or taxon)	Number
pig subadult n	raw count of subadult individuals reported for this taxon. (0 value indicates recorded absence of individuals in this age class; blank value indicates lack of published data for this age class or taxon)	Number
pig young adult n	raw count of young adult individuals reported for this taxon. (0 value indicates recorded absence of individuals in this age class; blank value indicates lack of published data for this age class or taxon)	Number
pig adult n	raw count of adult individuals reported for this taxon. Raw count includes old adult counts (0 value indicates recorded absence of individuals in this age class; blank value indicates lack of published data for this age class or taxon)	Number
pig old adult present	indicates whether old adult remains of this taxon reported present in this assemblage	Yes/No
pig age profile	description of population age profile for this taxon	Text (50)
sex pig	description of population sex profile for this taxon	Text (50)
horse toothwear method	toothwear ageing method used in the published bone report, and from which the data in this table is derived. Choose from value list: Levine crown heights;eruption and wear;other;unspecified	Text (50)
horse percentages only	indicates % counts have been published for this taxon, but not raw counts. Where 'yes', the % values are recorded in this table in place of raw counts	Yes/No
horse derived data	indicates graphical representations published for this taxon, but not raw counts. Where 'yes', the derived counts are recorded in this table in place of raw counts	Yes/No
horse fetal/neonate present	indicates whether fetal/neonatal remains of this taxon reported present in this assemblage	Yes/No
horse juvenile n	raw count of juvenile individuals reported for this taxon. Raw count includes foetal/neonatal counts (0 value indicates recorded absence of individuals in this age class; blank value indicates lack of published data for this age class or taxon)	Number
horse subadult n	raw count of subadult individuals reported for this taxon. (0 value indicates recorded absence of individuals in this age class; blank value indicates lack of published data for this age class or taxon)	Number

horse young adult n	raw count of young adult individuals reported for this taxon. (0 value indicates recorded absence of individuals in this age class; blank value indicates lack of published data for this age class or taxon)	Number
horse adult n	raw count of adult individuals reported for this taxon. Raw count includes old adult counts (0 value indicates recorded absence of individuals in this age class; blank value indicates lack of published data for this age class or taxon)	Number
horse old adult present	indicates whether old adult remains of this taxon reported present in this assemblage	Yes/No
horse age profile	description of population age profile for this taxon	Text (50)
horse sheep	description of population sex profile for this taxon	Text (50)
notes	additional notes for each record where relevant	Text (255)

Name of table / worksheet 9:	ASSEMBLAGE DETAIL - BUTCHERY	
Purpose of table/worksheet:	Records details of butchery evidence reported for cow, sheep/goat, pig, horse, and dog from each faunal assemblage	
Number of rows of data:	108	
Primary key (database only):	none	
Name of field	Full description of field and codes or terminology used	Data type and field length (database only)
assemblage id	unique assemblage code	Number
% cattle butchered	reported percentage of cattle remains with butchery marks. (0 value indicates reported absence of butchery marks; blank value indicates lack of published quantitative butchery data or absence of this taxon)	Text (50)
cattle butchery type	description of butchery mark profile for this taxon	Text (50)
% sheep/goat butchered	reported percentage of sheep/goat remains with butchery marks. (0 value indicates reported absence of butchery marks; blank value indicates lack of published quantitative butchery data or absence of this taxon)	Text (50)
sheep/goat butchery type	description of butchery mark profile for this taxon	Text (50)
% pig butchered	reported percentage of pig remains with butchery marks. (0 value indicates reported absence of butchery marks; blank value indicates lack of published quantitative butchery data or absence of this taxon)	Text (50)
pig butchery type	description of butchery mark profile for this taxon	Text (50)
horse butchered	reported presence of horse remains with butchery marks. 'yes' = present	Yes/No
dog butchered	reported presence of dog remains with butchery marks. 'yes' = present	Yes/No
notes	additional notes for each record where relevant	Text (255)

Name of table / worksheet 10:	ASSEMBLAGE DETAIL - METRICS	
Purpose of table/worksheet:	Records details of metrical data reported for cow, sheep/goat, pig, horse, and dog from each faunal assemblage	
Number of rows of data:	113	
Primary key (database only):	none	
Name of field	Full description of field and codes or terminology used	Data type and field length (database only)
assemblage id	unique assemblage code	Number
cattle metrical data	reported abundance of metrical data for this taxon	Text (20)
sheep/goat metrical data	reported abundance of metrical data for this taxon	Text (20)
pig metrical data	reported abundance of metrical data for this taxon	Text (20)
horse metrical data	reported abundance of metrical data for this taxon	Text (20)
dog metrical data	reported abundance of metrical data for this taxon	Text (20)
notes	additional notes for each record where relevant	Text (255)

Name of table / worksheet 11:	ASSEMBLAGE DETAIL - BONE GROUPS & 'SPECIAL DEPOSITS'	
Purpose of table/worksheet:	Records details of Associated Bone Groups (ABGs) or other possible 'special' deposits reported for each assemblage, including presence/absence of ABGs for different taxa, presence/absence of different types of ABGs, and published interpretations of deposits.	
Number of rows of data:	99	
Primary key (database only):	none	
Name of field	Full description of field and codes or terminology used	Data type and field length (database only)
assemblage id	unique assemblage code	Number
cattle	reported presence of ABGs or other possible 'special' deposits for this taxon. 'yes' = present	Yes/No
sheep/goat	reported presence of ABGs or other possible 'special' deposits for this taxon. 'yes' = present	Yes/No
pig	reported presence of ABGs or other possible 'special' deposits for this taxon. 'yes' = present	Yes/No
horse	reported presence of ABGs or other possible 'special' deposits for this taxon. 'yes' = present	Yes/No
dog	reported presence of ABGs or other possible 'special' deposits for this taxon. 'yes' = present	Yes/No
red deer	reported presence of ABGs or other possible 'special' deposits for this taxon. 'yes' = present	Yes/No
roe deer	reported presence of ABGs or other possible 'special' deposits for this taxon. 'yes' = present	Yes/No

other large mammal	reported presence of ABGs or other possible 'special' deposits for this taxon. 'yes' = present	Yes/No
large mammal skeleton	reported presence of skeleton ABG deposit among large mammal taxa. 'yes' = present	Yes/No
large mammal articulated limb	reported presence of articulated limb ABG deposit among large mammal taxa. 'yes' = present	Yes/No
large mammal articulated trunk	reported presence of articulated trunk ABG deposit among large mammal taxa. 'yes' = present	Yes/No
large mammal skull(s)	reported presence of skull deposit among large mammal taxa. 'yes' = present	Yes/No
large mammal other	reported presence of other forms of ABG or possible 'special' deposit among large mammal taxa. 'yes' = present	Yes/No
large mammal butchery noted	reported presence of butchery among any of the ABGs or possible 'special' deposits of large mammal taxa. 'yes' = present	Yes/No
large mammal author interpretation	reported interpretation of ABGs and other possible 'special' deposit types for large mammal taxa	Text (50)
raven	reported presence of ABGs or other possible 'special' deposits for this taxon. 'yes' = present	Yes/No
crow/rook	reported presence of ABGs or other possible 'special' deposits for this taxon. 'yes' = present	Yes/No
fowl	reported presence of ABGs or other possible 'special' deposits for this taxon. 'yes' = present	Yes/No
other bird	reported presence of ABGs or other possible 'special' deposits for this taxon. 'yes' = present	Yes/No
bird skeleton	reported presence of skeleton ABG deposit among bird taxa. 'yes' = present	Yes/No
bird articulated limb	reported presence of articulated limb ABG deposit among bird taxa. 'yes' = present	Yes/No
bird articulated trunk	reported presence of articulated trunk ABG deposit among bird taxa. 'yes' = present	Yes/No
bird skull(s)	reported presence of skull deposit among bird taxa. 'yes' = present	Yes/No
bird other	reported presence of other forms of ABG or possible 'special' deposit among bird taxa. 'yes' = present	Yes/No
bird butchery noted	reported presence of butchery among any of the ABGs or possible 'special' deposits of bird taxa. 'yes' = present	Yes/No
bird author interpretation	reported interpretation of ABGs and other possible 'special' deposit types for bird taxa	Text (50)
small mammal	reported presence of ABGs or other possible 'special' deposits for this taxon. 'yes' = present	Yes/No
amphibian	reported presence of ABGs or other possible 'special' deposits for this taxon. 'yes' = present	Yes/No
fish	reported presence of ABGs or other possible 'special' deposits for this taxon. 'yes' = present	Yes/No
other taxa	reported presence of ABGs or other possible 'special' deposits for any other taxa (i.e. not large mammal or bird). 'yes' = present	Yes/No
other taxa skeleton	reported presence of skeleton ABG deposit among other taxa (i.e. not large mammal or bird). 'yes' = present	Yes/No
other taxa articulated limb	reported presence of articulated limb ABG deposit among other taxa (i.e. not large mammal or bird). 'yes' = present	Yes/No
other taxa	reported presence of articulated trunk ABG deposit among	Yes/No

articulated trunk	other taxa (i.e. not large mammal or bird). 'yes' = present	
other taxa skull(s)	reported presence of skull deposit among other taxa (i.e. not large mammal or bird). 'yes' = present	Yes/No
other taxa other	reported presence of other forms of ABG or possible 'special' deposit among other taxa (i.e. not large mammal or bird). 'yes' = present	Yes/No
other taxa butchery noted	reported presence of butchery among any of the ABGs or possible 'special' deposits of other taxa (i.e. not large mammal or bird). 'yes' = present	Yes/No
other taxa interpretation	reported interpretation of ABGs and other possible 'special' deposit types for other taxa (i.e. not large mammal or bird).	Text (50)
notes	additional notes for each record where relevant	Text (255)

Look-up and supplementary information tables

Name of table / worksheet 12:	Age stage equivalents - cattle	
Purpose of table/worksheet:	Supplementary information table. Provides definitions for cattle age fields within table 'ASSEMBLAGE DETAIL – AGE & SEX'	
Number of rows of data:	6	
Primary key (database only):	none	
Name of field	Full description of field and codes or terminology used	Data type and field length (database only)
Age category	age classes based on nearest equivalent to age details provided in report. cross reference to 'cattle fetal/neonate present', 'cattle juvenile n', 'cattle subadult n', 'cattle young adult n', 'cattle adult n', 'cattle old adult present' fields in 'ASSEMBLAGE DETAIL – AGE & SEX' table.	Text (50)
Grant stage	Grant stage values equivalent to Age category	Text (50)
Halstead stage	Halstead stage values equivalent to Age category	Text (50)
Maltby stage	Maltby stage values equivalent to Age category	Text (50)
Higham age	age values equivalent to Age category	Text (50)

Name of table / worksheet 13:	Age stage equivalents - Horse	
Purpose of table/worksheet:	Supplementary information table. Provides definitions for horse age fields within table 'ASSEMBLAGE DETAIL – AGE & SEX'	
Number of rows of data:	6	
Primary key (database only):	none	
Name of field	Full description of field and codes or terminology used	Data type and field length (database only)
Age category	age classes based on nearest equivalent to age details provided in report. cross reference to 'horse fetal/neonate present', 'horse juvenile n', 'horse subadult n', 'horse young	Text (50)

	adult n', 'horse adult n', 'horse old adult present' fields in 'ASSEMBLAGE DETAIL – AGE & SEX' table.	
Suggested age	age values equivalent to Age category	Text (50)

Name of table / worksheet 14:	Age stage equivalents - Pig	
Purpose of table/worksheet:	Supplementary information table. Provides definitions for pig age fields within table 'ASSEMBLAGE DETAIL – AGE & SEX'	
Number of rows of data:	6	
Primary key (database only):	none	
Name of field	Full description of field and codes or terminology used	Data type and field length (database only)
Age category	age classes based on nearest equivalent to age details provided in report. cross reference to 'pig fetal/neonate present', 'pig juvenile n', 'pig subadult n', 'pig young adult n', 'pig adult n', 'pig old adult present' fields in 'ASSEMBLAGE DETAIL – AGE & SEX' table.	Text (50)
Grant stage	Grant stage values equivalent to Age category	Text (50)
Hambleton stage	Halstead stage values equivalent to Age category	Text (50)
Maltby stage	Maltby stage values equivalent to Age category	Text (50)
Payne age	age values equivalent to Age category	Text (50)

Name of table / worksheet 15:	Age stage equivalents - Sheep/goat	
Purpose of table/worksheet:	Supplementary information table. Provides definitions for sheep/goat age fields within table 'ASSEMBLAGE DETAIL – AGE & SEX'	
Number of rows of data:	6	
Primary key (database only):	none	
Name of field	Full description of field and codes or terminology used	Data type and field length (database only)
Age category	age classes based on nearest equivalent to age details provided in report. cross reference to 'sheep/goat fetal/neonate present', 'sheep/goat juvenile n', 'sheep/goat subadult n', 'sheep/goat young adult n', 'sheep/goat adult n', 'sheep/goat old adult present' fields in 'ASSEMBLAGE DETAIL – AGE & SEX' table.	Text (50)
Grant stage	Grant stage values equivalent to Age category	Text (50)
Halstead stage	Halstead stage values equivalent to Age category	Text (50)
Maltby stage	Maltby stage values equivalent to Age category	Text (50)
Payne age	age values equivalent to Age category	Text (50)

Name of table / worksheet 15:	GIS points	
Purpose of table/worksheet:	Provides Ordnance Survey (OS) numerical grid references (X & Y coordinates) for each site record.	

Number of rows of data:	108	
Primary key (database only):	none	
Name of field	Full description of field and codes or terminology used	Data type and field length (database only)
site id	unique site code	Number
grid number x	OS grid number x value	Number
Grid number y	OS grid number y value	Number
X	OS grid reference x value	Text (6)
Y	OS grid reference y value	Text (6)

Name of table / worksheet 17:	Gnawing	
Purpose of table/worksheet:	Look-up table. Provides definitions for 'Gnawing' field values used in 'SITE LEVEL INFO' table	
Number of rows of data:	4	
Primary key (database only):	none	
Name of field	Full description of field and codes or terminology used	Data type and field length (database only)
Gnawing	values for 'gnawing' field in 'SITE LEVEL INFO' table	Text (50)
Definition	definition of 'Gnawing' field values	Text (255)

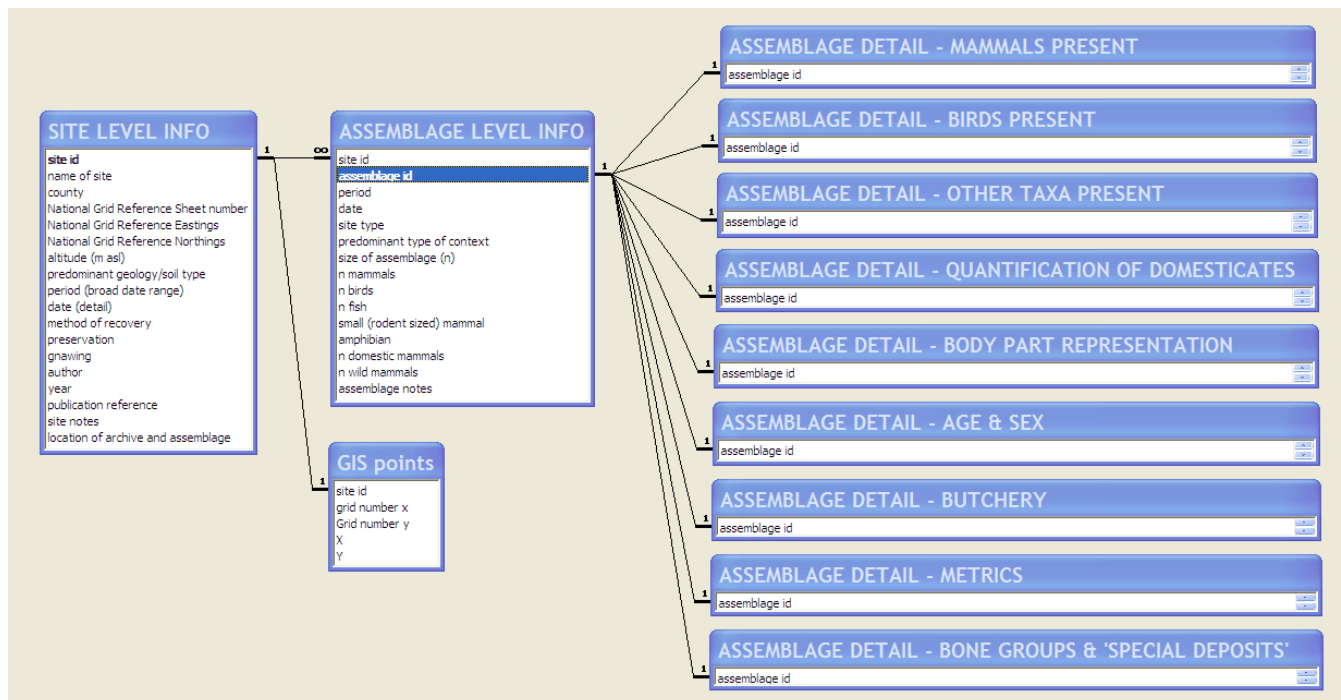
Name of table / worksheet 18:	metric categories	
Purpose of table/worksheet:	Look-up table. Provides definitions for field values used in 'SITE LEVEL INFO' table	
Number of rows of data:	6	
Primary key (database only):	none	
Name of field	Full description of field and codes or terminology used	Data type and field length (database only)
metrics	values for 'cattle metrical data', 'sheep/goat metrical data', 'pig metrical data', 'horse metrical data', and 'dog metrical data' fields in 'ASSEMBLAGE DETAIL – METRICS' table	Text (50)
definition	definition of 'metrics' field values by total number of reported measurements	Text (50)
record order	record indexing order	Number

Name of table / worksheet 19:	period codes	
--------------------------------------	--------------	--

Purpose of table/worksheet:	Look-up table. Provides definitions for period values used in 'ASSEMBLAGE LEVEL INFO' and 'SITE LEVEL INFO' tables	
Number of rows of data:	13	
Primary key (database only):	none	
Name of field	Full description of field and codes or terminology used	Data type and field length (database only)
period code	values for period codes used in 'period' and 'date' fields in 'ASSEMBLAGE LEVEL INFO' table, and 'date (detail)' field in 'SITE LEVEL INFO' table	Text (10)
definition	definition of 'period code' field values (Follow NMR thesaurus, wherever possible)	Text (50)

Relationships (database only)

Please include an entity relationship diagram to show the relationships between your database tables



Database Guide

Table	Relationships	Description of content
SITE LEVEL INFO	Linked to 'ASSEMBLAGE LEVEL INFO' by 'Site ID' field.	Contains information (where available) for each separate site or excavation concerning geography, period of use, faunal recovery and preservation, location of archives and details of published faunal assemblage reports. (NB. there may be more than one assemblage recorded from each site, e.g. if subdividing

		by date).
ASSEMBLAGE LEVEL INFO	Linked to 'SITE LEVEL INFO' by 'Site ID' field. Linked to all 'ASSEMBLAGE DETAIL' tables by 'Assemblage ID' field	Contains details (where available) of site type, period, and a quantitative summary for each separate faunal assemblage (NB. there may be more than one assemblage from each site, e.g. if subdividing by date)
ASSEMBLAGE DETAIL (all tables)	All tables linked to 'ASSEMBLAGE LEVEL INFO' table by 'Assemblage ID' field.	<p>Where sufficient information was supplied in the published reports, the following specific details of each recorded faunal assemblage was recorded in the appropriate ASSEMBLAGE DETAIL TABLES:</p> <p>ASSEMBLAGE DETAIL - MAMMALS PRESENT: List of mammal taxa with ticks indicating presence of each taxa within each assemblage</p> <p>ASSEMBLAGE DETAIL - BIRDS PRESENT: List of bird taxa with ticks indicating presence of each taxa within each assemblage</p> <p>ASSEMBLAGE DETAIL - OTHER TAXA PRESENT: List of othe taxa (e.g. amphibians, reptiles and fish) with ticks indicating presence of each taxa within each assemblage</p> <p>ASSEMBLAGE DETAIL - QUANTIFICATION OF DOMESTICATES: Records NISP and MNI counts for Cattle, Sheep/goat, Pig, Horse and Dog.</p> <p>ASSEMBLAGE DETAIL - BODY PART REPRESENTATION: Records brief description of pattern of body part representation for Cattle, Sheep/goat, Pig and Horse.</p> <p>ASSEMBLAGE DETAIL - AGE & SEX: Indicates method of ageing used in published report. Records counts of individuals assigned to each of four broad age categories based on mandibular tooth eruption and wear . Records brief description of age composition of assemblage for Cattle, Sheep/goat, Pig and Horse. Records brief description of sex composition of assemblage for Cattle, Sheep/goat, Pig and Horse.</p> <p>ASSEMBLAGE DETAIL - BUTCHERY: Records the quantity and brief description of the type of butchery marks reported for Cattle Sheep/goat and pig. Records the presence of butchery marks reported for Horse and Dog.</p> <p>ASSEMBLAGE DETAIL - METRICS: Records availability and abundance of published metrical data for Cattle, Sheep/goat, Pig, Horse and Dog.</p> <p>ASSEMBLAGE DETAIL - BONE GROUPS AND 'SPECIAL DEPOSITS': Indicates which mammals, birds and other taxa are present as Associated Bone Groups (ABGs). Indicates the categories of ABGs present within each broad taxonomic group. Indicates the interpretation placed upon ABGs by authors of published faunal reports.</p>

Other tables (various)		look-up tables for data categories used in SITE LEVEL INFO, ASSEMBLAGE LEVEL INFO and ASSEMBLAGE DETAIL tables.
------------------------	--	---