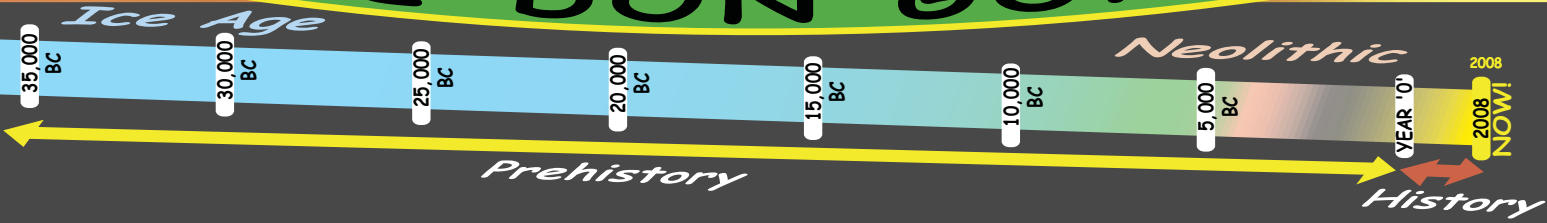


Pre-hysterical fun, facts and stories about the prehistoric Don Gorge!

POSITIVELY PREHISTORIC

THE DON GORGE



Prehistory's HUGE! It's everything before writing.

EANA THE FIRE KEEPER kills a Mammoth!

IT'S THE ICE AGE
35,000 BC

Love it! Summer's coming, and we're following the horses north to the Don Gorge. Great hunting and new clothes for the winter...

They visit a grave on the way

That's where wise Seta lies... I miss her

...and finally arrive at their summer camp, above the river Don

Tonight we eat the last of our dried, salted meat, because we trust this place to provide new food

Then we dance to ensure a good hunt

Mammoth come! Mammoth come! Mammoth come!

Mammoth WILL COME!

At last the hunting party set off

Can yer see what it is yet?

Good hunting!

Eana bring the fire kit and keep it safe

A small flint to bash a pebble to make sparks to light dried moss

Quick, get this mammoth dung all over you

Now the hunt is on!

I don't see why I've got to be covered in this stuff!!

It's so they can't tell we're here

Eana uses her fire kit to light a torch

May the Gods bless us... NOT YET!

OOPS!

CRACKLE

But the herd smell smoke and panic...

No time to lose! Light your torches and drive that lame one over the edge of the gorge. NOW MOVE!

EEEEEE!!

Yikes! Hyenas are eating our mammoth. Light a big fire to keep them away

The butchering is complete. Let's get home for a feast!

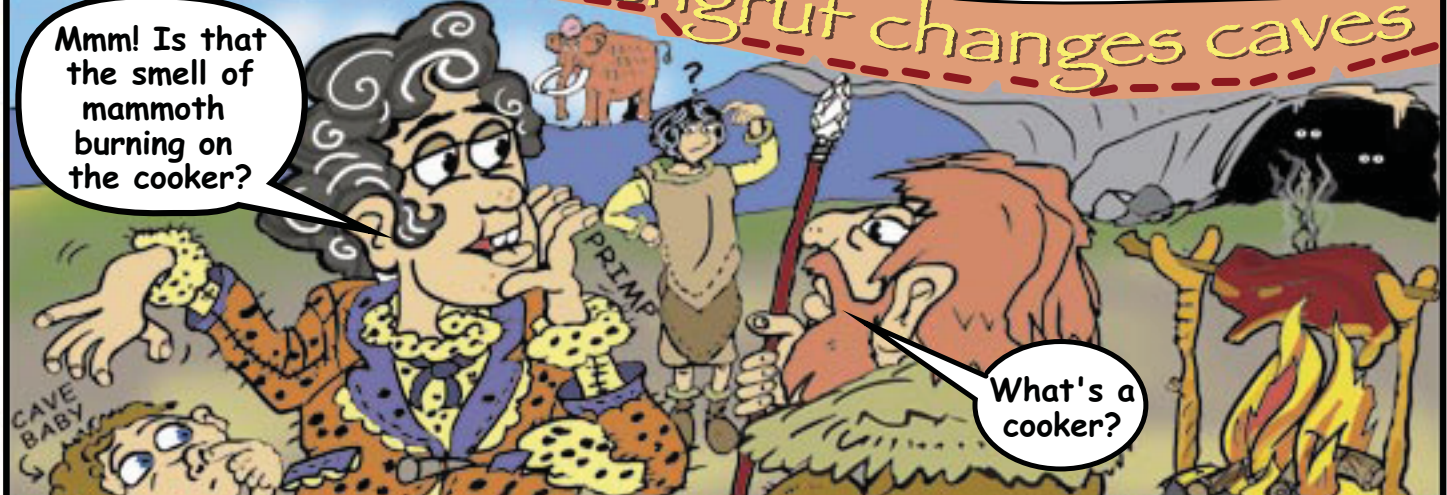
The worst bit was being covered in pool

END

Llewelithic Bowengruff changes caves

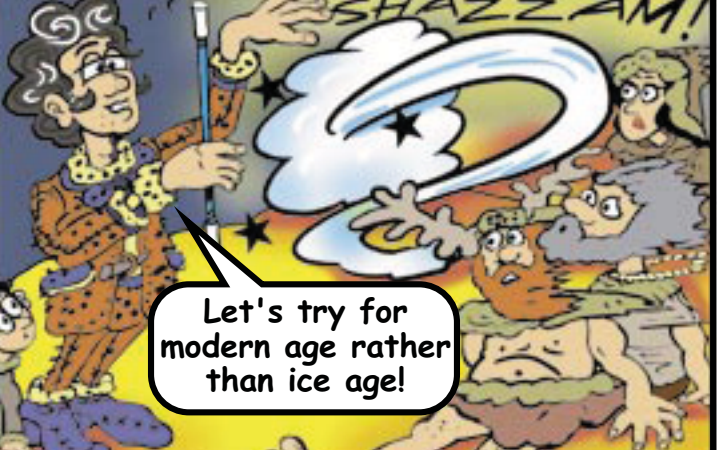
Loony Llewelithic, the famous time-travelling makeover genius is in the Ice Age trying to glam up our hunter-gatherer ancestors!

Mmm! Is that the smell of mammoth burning on the cooker?



What's a cooker?

So...you actually live in this cave? How positively Prehistoric!



Let's try for modern age rather than ice age!



Oops! Maybe not!

Fire's lit really well

Too bouncy

Hmm let's try again



Too soft



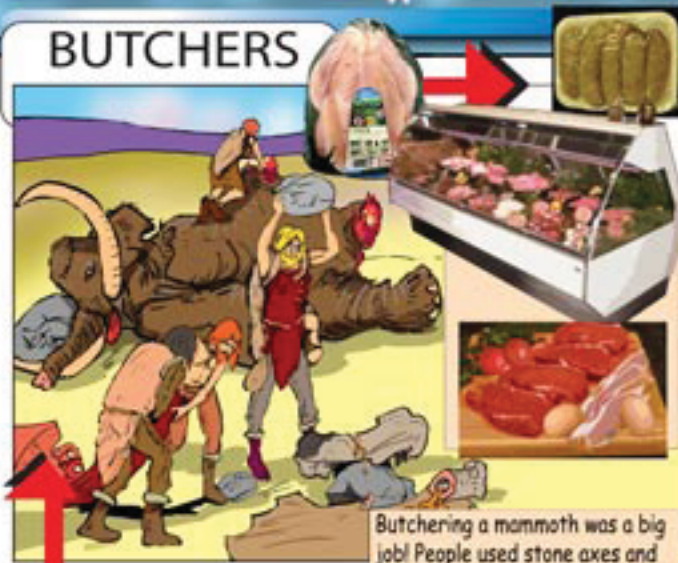
Stay for tea Bowengruff, we're having huge greasy mammoth steaks tonight!

Er...must dash...got to catch a wholly rhino



ICE AGE Superstore!

BUTCHERS



Butchering a mammoth was a big job! People used stone axes and knives to chop the animal into chunks. They crushed up the leg bones to eat the scrummy rich bone marrow inside. Yum yum!

FOOD PRESERVING

35,000 BC. A mammoth provided meat for many weeks. It took people days to dry the meat on wooden racks over fires, so it would keep.

Anyone for a dried mammoth sandwich or tail on toast? Slurp!



LIGHTING



All you need to make an Ice Age lamp is tallow (animal fat), a plant fibre wick and a stone container. Smelly!

KITCHEN EQUIPMENT



Razor sharp stone knife

I think I'll stick to more modern forms of lighting thanks...

... low energy bulbs are good for the planet.



MATERIALS



Hides, tusks and bones made great shelters, tools, clothes and jewellery.

It took a lot of work to get a skin clean and ready to use.

TENTS



Ice Age people made tents from animal skins and wooden branches or mammoth bones and tusks.

In comparison, modern tents are light to carry and easy to erect.

FASHION



Hide anorak, sewn up with sinew

A modern anorak, made from synthetic materials

Ice Age people made hard-wearing clothes out of animal skins. Some of these clothes were waterproof. They used furs to make warm, comfortable clothes.

Animal hide trousers

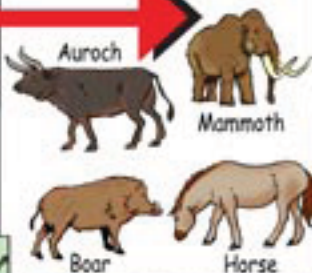
FIRE



Lighting a fire was skilled work 35,000 years ago. Using a bow and firestick to make sparks takes a lot of patience!

WHAT THEY ATE

Meat was a big part of an Ice Age diet. People also collected nuts, plant roots, fungi and berries to eat. Cold weather meant fewer plants grew than these days.



Who knows if our ancestors would like modern food? What do you think?



SUPERMART



WHAT'S WRONG?

This Ice Age hunting scene is full of mistakes. How many can you spot?



Remember, this is the Don Gorge over 35,000 years ago (older than your grandad!)

Written by: Georgia Litherland.
Artwork by: Marvin Harding.

Positively Prehistoric was produced by inHeritage for the Don Gorge Strategic Partnership and funded by English Heritage through the Aggregates Levy Sustainability Fund.

Find out more about the Discovering the Ancient Don Gorge project by visiting our website at: www.yourfind.org.uk.

Don Gorge Strategic Partnership
rachael.cranch@doncaster.gov.uk
Telephone: 01302 735049

inHeritage
info@inheritage.co.uk
www.inheritage.co.uk

English Heritage
www.english-heritage.org.uk

South Yorkshire Archaeology Service
syorks.archservice@sheffield.gov.uk
www.sheffield.gov.uk/syas

inHeritage
accessible and innovative




ENGLISH HERITAGE

JAY'S ARROW FLIES



Neolithic times, 3,500 years ago. Jay and his family live in long houses near the Don Gorge. They grow small-grained emmer wheat and vegetables. They herd cattle, sheep and goats. Jay's people honour their dead ancestors with big tombs called long barrows.

Jay must soon make a special journey with his ancestors' help.



But right now he's busy with something else...



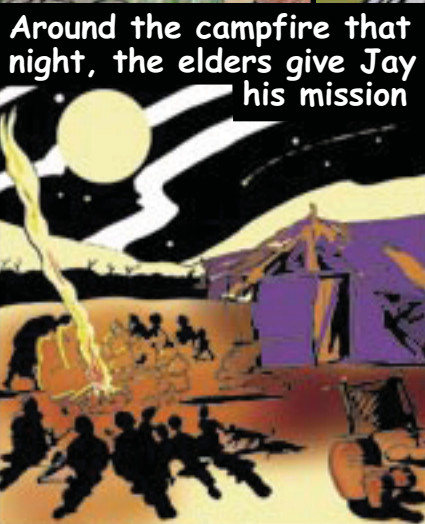
Jay, bring in the sheep and cows. It's not safe.

Ok grandmother

One day... just one chance... I'm going to get that wolf!



You'll be safe tonight



Around the campfire that night, the elders give Jay his mission

So Jay - you are old enough to make your first flint arrow, and begin to become a man

Tomorrow you go out alone to find the right flint. Don't worry lad, your grandmother will teach you what to look for



Next day...

Find this kind of pebble by the river's edge. It must have no cracks in it.

All right Gran



Learn from me and you'll be able to make one like this with practice



Jay sets off



Next stop, the river.



OK, I go to the tomb, leave the offering, ask for their help...



...and I'm NOT SCARED!!! I CAN do this!



He leaves a gift of pork in the tomb



Right then. Next stop, Don Gorge

Jay has one important stop... to ask his dead ancestors for their blessing



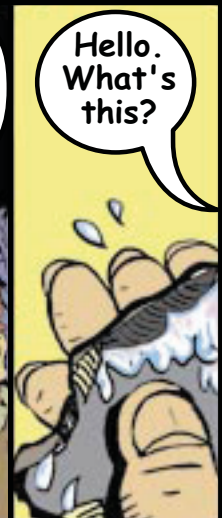
I need to get down there to find the right flint



OK ancestors, help me to search well



Nothing. Just sand, mud and pebbles



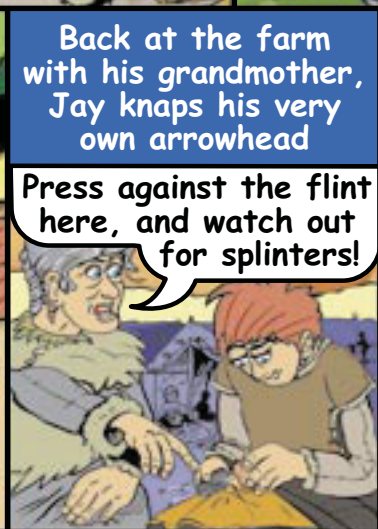
Hello. What's this?



FOUND SOME!



Soon I'll be hunting deer like you



Back at the farm with his grandmother, Jay knaps his very own arrowhead

Press against the flint here, and watch out for splinters!

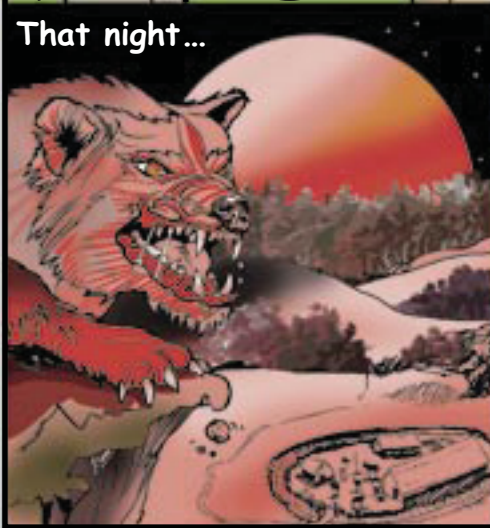


He glues and ties the arrowhead

then comes the fletching of feathers



Nice work Jay. Your first hunting arrow. Tomorrow you hunt with us!



What's that noise?

That night...

PREHISTORIC FUN & FACTS

Neolithic treats

Baked apple with berries and honey

Remove the cores from 4 large cooking apples. Put them in an oven dish and surround them with blackberries or other favourite berries. Put 2-3 tablespoons of honey all over the top. Bake them in the oven at Gas 6 / 400F / 200C for 40-60 minutes.

DELICIOUS!!! (especially with newfangled custard or ice-cream).

(Remember to get help with the oven and knives!)



Roasted Hazelnuts

Scatter a cupful of hazelnuts on a baking tray and sprinkle with salt (or sugar). Bake at Gas 4 / 350F / 180C for 10 minutes or so. Or just put them under a grill for a few minutes, stirring occasionally.

Dead hot when they're cooked - so wait a few minutes before you tuck in.



Mmmurff!!*?!

WORDSEARCH

CAN YOU FIND THESE GREAT ICE AGE AND NEOLITHIC WORDS?

S	F	U	D	A	E	H	W	O	R	R	A	W	O	D	H
B	O	R	E	R	Z	K	S	J	E	V	E	O	M	D	I
H	I	R	E	P	A	R	C	S	M	R	Z	O	E	N	C
A	X	F	E	A	S	T	F	I	R	H	D	B	L	K	E
N	E	J	N	C	A	V	E	P	A	I	N	T	I	N	G
D	T	R	A	R	O	B	N	Y	F	D	E	S	H	T	A
A	T	V	R	E	T	N	U	H	P	R	P	O	L	R	E
X	E	M	D	F	B	Y	I	T	W	O	L	F	R	A	C
E	B	U	S	E	S	R	O	H	P	O	T	O	S	X	I
N	E	O	L	I	T	H	I	C	R	I	L	T	W	U	H
A	M	B	F	Z	R	I	J	G	H	Y	P	E	E	H	S
F	S	U	C	I	H	T	B	X	Y	E	L	A	P	R	K
G	R	A	E	P	S	G	U	L	T	N	D	L	J	Z	Y
S	I	N	Q	U	E	T	L	D	M	A	M	M	O	T	H
Z	J	A	Y	C	E	R	I	F	P	M	A	C	V	O	I
L	Y	E	G	R	O	G	N	O	D	I	C	X	A	N	W

- | | | | |
|-------------------|---------------|---------|-----------|
| Neolithic | Arrowhead | Spear | Horses |
| Cave | Scraper | Sheep | Don Gorge |
| Mammoth | Borer | Farmer | Wolf |
| Woolly rhinoceros | Eana | Hunter | Campfire |
| Hand axe | Jay | Pottery | Feast |
| Ice Age | Cave painting | Furs | |

Exploring prehistory

35,000 BC

Ice Age warm period

Eana's people move across vast open plains, hunting herds of wild horses and woolly mammoths. But watch out for woolly rhinos and hyenas!



8,000 BC

Mesolithic

The Ice Age ends. Britain warms up and big forests grow.

3,500 BC

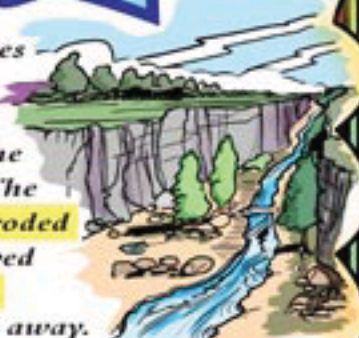
Neolithic

Jay's people clear trees to make farms. They grow emmer wheat and vegetables and keep cattle, sheep and goats.



Did you know?

The Don Gorge reaches from Sprotbrough to Conisbrough. It took millions of years for the Don Gorge to form! The river Don gradually eroded the limestone and carved out the gorge. **Erosion** means slowly wearing away.



What steps should you take if a wolf races towards you?

Big ones - fast!



Did you know?
 THE ICE AGE WASN'T ALWAYS FREEZING COLD
 SOMETIMES IT WAS LIKE MODERN COLD WINTERS
 BUT SOMETIMES IT WAS LIKE THE ARCTIC. BRRR!

In this game you follow Jay's journey to make an arrowhead and kill your first deer.



Play this game with 2 or more players. You'll need a counter each and a dice.

Why not draw your own counters to look like ancient tools or be a character from the comic?

Throw the exact number to get to square 30 and become a Rock Star!

Rock Star!

3,500 BC

FINISH

ROCK STAR!

29

The deer are running around like idiots today. It's too difficult to hit one. Stand up and pretend to shoot your arrow.

28

A beautiful arrowhead! Throw a 3 now to finish the game and be a rock star! If you're unlucky, try again next go.

27

26

22

Your first strike breaks the flint perfectly. Go on to square 26.

23

Your baby brother wants to help. Miss one go while you find somewhere quieter to work.

24

25

Stand up and pretend to be knapping your flint arrowhead.

21

On no! Bean has gone missing. Go back to square 18 to look for her.

20

19

You've got your flint! Race all the way home to square 21.

18

17

Swimming in the river's so lush, you forget to look for the flint. Stand up and do a quick hunting dance to dry off.

16

11

Flat easy grasslands. You run swiftly all the way to number 14.

10

12

It's getting dark. You can hear howling wolves. Howl back at them, like a wolf.

13

Hide up a tree for 1 turn. Stand up and pretend to climb a tree.

14

15

The light is coming and you can smell fresh water. You're nearly at Don Gorge. Have another go.

8

7

Your dog Bean comes with you for company. You feel so good you both run all the way to square 11.

6

Mum gives you a great packed lunch - roast sheep and barley bread with herbs. Move on 3 squares.

5

1

Uh oh. You sleep in. Miss one turn to snore ...

loudly!

2

3

You wake up early, keen to get on with your mission. Have another go.

4

START

DO YOU ROCK?





CHILL OUT WITH Prehistoric JOKES AND GAMES

QUESTION

What goes: clunk Owl clunk Owl?

ANSWER

Two aurochs kissing.



What's worse than a woolly rhinoceros in a bad mood?

Nothing!

Did you know?

Woolly rhinoceroses didn't clean their teeth. One skull still had bits of plant between its teeth. So now archaeologists can discover more about what rhinos liked to eat. (Unless it's the plant that killed it, of course!)



Did you know?

In 2002 some quarry workers found a woolly rhinoceros skull in their digger bucket. How lucky was that?!



"I'm singe-ing in the rain"



Could you survive the Neolithic?

These tools and tasks are all muddled up. Write the correct tool for the job in the yellow box.

Tool A



SCRAPER

Activity 1

1



Answer: Tool



Answer: Tool

Activity 2

2

Tool B



BORER

Tool C



AXE

Activity 3

3



Answer: Tool



Answer: Tool

Activity 4

4

Tool D



LEAF SHAPED ARROWHEAD

Tool E



FLINT CORE

Activity 5

5



Answer: Tool

What do you get when you cross an auroch with a flower?



I don't know but I'm not smelling it.

What do you call a woolly rhino wearing ear-muffs?

Anything you like, he can't hear you.



Did you know?

Woolly mammoth tusks were 3 metres long. Mammoths used them to shovel snow off plant food, to protect themselves and sometimes to fight!



Answers to what's wrong page: power station, electric pylons, polar bear, sunbathing woman, Wellington boots, wrist watch, rucksack, woolly hat, motorbike, skidoo, tree trunk (trees didn't grow in the Ice Age), palm tree, aeroplane, stone bridge, modern tent, rifle, man dressed in modern clothes about to be stepped out. Toolmatching answers: 1B, 2C, 3A, 4E, 5D.

What time is it when a mammoth sits on your tent? Time to make a new tent!