

Hodgson Street, Sheffield, South Yorkshire

National Grid Reference: SK 3484 8665 (centred)

Archaeological Assessment Report

Report 1040c.1(1) © ARCUS 2008

Fieldwork

Tim Cobbold
Roz Sampson
Tom Smith
Adam Tinsley
Joanne Stables
Stepan Ruckl

Illustrations

Chris Swales

Reporting

Tim Cobbold

Archive

Claire Coulter
Linzi Harvey

Checked by:	Passed for submission to client:
Date:	Date:
Tim Cobbold <i>ARCUS Project Officer</i>	Anna Badcock <i>ARCUS Assistant Director</i>

OASIS SUMMARY FORM

PROJECT DETAILS		
OASIS identifier	arcus2-37904	
Project title	Hodgson Street	
Short description of the project	Archaeological evaluation and mitigation as condition of planning consent. Site opened by machine and the remains of back-to-back houses excavated and fully recorded.	
Project dates	February and March 2008	
Previous/future work	Building recording/possible Final Report	
Monument type and period	Residential/domestic – 19 th -century	
PROJECT LOCATION		
County/Parish	Sheffield	
Site address	Hodgson Street, Sheffield, South Yorkshire	
Site co-ordinates	NGR SK 3484 8665 (centred)	
Site area	500m ²	
PROJECT CREATORS		
Organisation	SYAS	
Project brief originator	SYAS	
Project design originator	ARCUS	
Director/supervisor	Tim Cobbold	
Project manager	Richard O'Neill	
Sponsor or funding body	Client (Broadfield Holdings Ltd.)	
PROJECT ARCHIVES		
Archive Type	Location/Accession no.	Content (e.g. pottery, metalwork, etc)
Physical	SHEFM:2008.21	Pottery, clay pipe, metals, glass, ceramic, "Plasfort" helmet
Paper	SHEFM:2008.21	Report (text, illustrations, plates)
Digital	SHEFM:2008.21	Report (.pdf copy)
BIBLIOGRAPHY		
Title	Assessment Report on Archaeological Mitigation on land at Hodgson Street, Sheffield, S.Yorks.	
Report no	1040c.1(1)	
Author	Tim Cobbold	
Date	August 2008	

CONTENTS

OASIS SUMMARY FORM	II
LIST OF ILLUSTRATIONS AND PLATES	IV
NON-TECHNICAL SUMMARY	V
1 INTRODUCTION	1
1.1 Site location and land use.....	1
2 ARCHAEOLOGICAL AND HISTORICAL BACKGROUND.....	1
2.1 Historical development	1
3 AIMS AND METHODOLOGY	3
3.1 Aims of archaeological mitigation.....	3
3.2 Methodology	3
3.3 Finds collection policy.....	3
3.4 Monitoring of fieldwork.....	3
4 ARCHAEOLOGICAL SUMMARY	4
5 SPECIALIST REPORTS	5
5.1 Ceramic artefacts.....	5
5.2 Clay pipe.....	6
5.3 Wood and leather	7
5.4 Shell.....	7
5.5 Glass.....	8
5.6 Ceramic building material	9
5.7 Crucible fragments and other refractory materials	10
5.8 Metalliferous process residues.....	10
5.9 Ferrous and non-ferrous metals	11
5.10 Animal bone.....	12
5.11 Miscellaneous items	12
6 DISCUSSION.....	13
7 ARCHIVE	13
8 BIBLIOGRAPHY	14
9 ILLUSTRATIONS	15
10 PLATES	16
11 TABLES	20

LIST OF ILLUSTRATIONS AND PLATES

Illustrations

- 1 Site location map
- 2 Location of mitigation area and evaluation trenches
- 3 Post-excavation site plan
- 4 Section - sub-yard deposits
- 5 Plan of cut features below cellars
- 6 Section – profiles through cut features

Plates

- 1 Cut features [4120], [4122] and [4124], facing northwest
- 2 Row of cellars along the former Milton Lane, facing north
- 3 Cellar floor [4131], facing southwest
- 4 Stairwell structure above cellar floor [4091], facing southwest
- 5 Drain [4145], facing south
- 6 Brylcreem advertisement from 1950s
- 7 Cherry Blossom boot polish advertisement from [4068]

NON-TECHNICAL SUMMARY

During March 2008, ARCUS archaeologists implemented a programme of archaeological mitigation on land at Hodgson Street, Sheffield. The mitigation work followed on from an archaeological evaluation which had revealed the well preserved remains of 19th-century back-to-back housing. The mitigation took the form of an open area excavation within an area of 20m x 25m.

The area was initially stripped by mechanical excavator. Machining ceased at the first archaeological horizon and hand cleaning commenced. A row of structures were encountered along the line of Hodgson Street and along the line of the former Milton Lane, with a large open area between these rows of structures. Upon cleaning, it became apparent that the structures identified were the cellars of the back to back housing seen on historic maps.

Following an on-site meeting with Dinah Saich of the South Yorkshire Archaeology Service (SYAS), it was agreed that a further machine dug trench would be placed within the open courtyard area between the rows of housing to attempt to locate an early toilet block seen on the historic maps. No structural elements of the actual toilet block were encountered. A sandstone capped, brick sided drain was located however, and this was likely to have been associated with the toilet block.

1 INTRODUCTION

Broadfield Holdings, on behalf of Carsick Development Ltd, commissioned ARCUS to carry out a programme of archaeological mitigation at Hodgson Street, Sheffield, South Yorkshire. This document represents an Assessment Report highlighting the nature of the archaeology encountered and an assessment of the artefacts recovered.

Planning consent was granted for the demolition of the standing buildings and the construction of residential properties. A condition of planning consent was that a scheme of archaeological investigation (evaluation by trial trenching) was agreed with the South Yorkshire Archaeology Service (SYAS) and implemented in advance of development. This was in line with government guidance as set out in DOE Planning Policy Guidance – Archaeology and Planning (PPG 16 – 1990).

Following the archaeological evaluation in January 2008 and the submission of an Evaluation Report, SYAS identified an area within the site which required archaeological mitigation. The archaeological mitigation was carried out during March 2008 by ARCUS Project Archaeologist Tim Cobbold, ARCUS Assistant Supervisor Roz Sampson, and ARCUS Field Assistants Tom Smith, Joanne Stables, Adam Tinsley, and Stepan Ruckl. Digital survey was carried out by ARCUS surveyor Kathy Speight.

1.1 Site location and land use

The site (centred on SK 3484 8665) was located at the corner of Hodgson Street and Headford Street, to the west of Sheffield city centre (**Illustration 1**). It was bounded on the southwest by Headford Street, on the southeast by Hodgson Street and on the northwest by Milton Lane. Former buildings had been demolished across the site.

The geology of the site was Lower Carboniferous Coal Measures (Westphalian-A) mudstone.

2 ARCHAEOLOGICAL AND HISTORICAL BACKGROUND

2.1 Historical development

The development of the site was documented in a desk-based appraisal prepared by ARCUS (May 2006).

The cartographic evidence indicates that the street plan was established in the mid-19th century, with back-to-back housing and a cutlery and edge-tool works established in the area during the 1860s. The works was located at the corner of Headford Street and Milton Lane. Part of this works may have survived as part of the recently demolished buildings, although much altered in the 20th century, when it was used by funeral furnishers.

The first map to show the area in detail was the 1853 OS map. This depicted the development site as a vacant building plot, with some housing having been built immediately to the northeast. Milton Lane, Hodgson Street and Headford Street had all been laid out and named by that date. The name of Milton Lane probably derives from the title of Viscount Milton, usually held by the eldest son of Earl Fitzwilliam, lord of the manor of Ecclesall. Hodgson Street is named after George Hodgson, steel maker and roller, who owned the Vulcan Works just off the Moor and southwest of the site. The derivation of Headford Street is not known, although it may refer to an

old crossing of the River Porter, which runs nearby.

The site appears to have been developed in the 1860s, with trade directories first recording properties to the south of Milton Street in 1868. The lack of detailed listings for the area suggests that most of the development consisted of housing, with a small works at the corner of Headford Street and Milton Lane, occupied by Joseph Gibbons and Sons, manufacturers of scissors, spring knives etc. The property at the corner of Headford Street and Hodgson Street was listed as a beerhouse. Two shops were the only properties listed on Hodgson Street. Milton Lane was not listed in any of the 19th- or 20th-century trade directories, possibly due to its small size and the predominantly domestic nature of the properties along it.

The 1896 Goad fire insurance plan showed the nature of development within the site. The only works was that at No.85 Headford Street, shown on the map as J Finlay's comb factory. This occupant was not listed in the 1895-6 trade directory, although in 1903 the works was recorded as a comb factory, the manufacturer being Francis Hartle. The property at No.97 was shown as a public house, still referred to in trade directory entries as a beerhouse. A photograph of the site taken in 1914 showed it as the Foresters Arms. The photograph illustrated the domestic nature of the adjacent properties, which consisted of three-storey back-to-back houses, in blocks with slightly different roof heights. The housing on Milton Lane was built to a similar design. There were shared courtyards in the centre of the site, with single-storey toilet blocks in the centre, and a slightly larger single-storey block at the southwest end of Court 4, which may have been a workshop. The comb factory was also arranged around a yard, with a two-storey building fronting onto Headford Street and single-storey structures to the rear, including a press shop on the Milton Lane frontage.

The 1905 and 1920 OS maps showed little change from the 1896 map. By 1916, the works at No.85 Headford Street was occupied by Swift and Goodinson, cabinet case manufacturers. This firm continued to be listed at the site into the 1970s, although it underwent several changes in profession. The two shops on Hodgson Street were still in existence in the 1950s, although the beerhouse at No.97 Headford Street had been converted to a shop by 1922.

The 1951 map indicated that the works had been enlarged to cover all of the block at the southwest end of the site by that date. Swift and Goodinson were listed as funeral furnishers in the corresponding trade directory. The housing was still in existence in 1963, but the site had been cleared and redeveloped by 1969. This was probably part of the Corporation's slum-clearance scheme, under which most of the back-to-back housing in the city was demolished. In the 1965 trade directory, only Swift and Goodinson were listed within the proposed development area. A photograph of the corner of Headford Street and Hodgson Street at that date showed the old public house, by then part of the works, with a garage entrance to the northwest and the lower garage building behind with a pitched roof.

By 1969, a works building had been constructed on the site of the former housing (Court 4). In 1974, the trade directories listed Swift and Goodinson, by then funeral furnishers and motor engineers, on Headford Street and Hodgson Street, with another firm of motor engineers, Beckett and Garner Ltd, also on Hodgson Street.

3 AIMS AND METHODOLOGY

3.1 Aims of archaeological mitigation

A scheme of archaeological mitigation was required, as a condition of planning consent to preserve by record any archaeological deposits or structures encountered.

The aims of the mitigation were:

- to determine the extent, condition, character, importance and date of any archaeological remains present and to preserve these by record
- to provide information that will enable the remains to be placed within their local, regional, and national context and for an assessment of the significance of the archaeology of the proposal area to be made;
- to determine if earlier archaeological features survived under the former buildings.

3.2 Methodology

Excavated areas were cleaned by hand and photographed in the first instance. Archaeological features and deposits were hand excavated, in an archaeologically controlled and stratigraphic manner, to a safe manageable level, but not below 1.4m due to health and safety concerns.

Built structures, such as walls, were exposed by mechanical excavator, cleaned by hand and recorded. Emphasis was placed on investigating structural features and deposits directly associated with the 19th-century back-to-back housing, attempting to locate the original toilet block, and the identification of any earlier features. Emphasis was also placed upon gathering data from *in situ* deposits and dated deposit sequences.

Features were drawn, photographed, and described on *pro-forma* sheets. Colour transparency and monochrome negative photographs were taken at a minimum format of 35mm. Appropriate sections were drawn at 1:20, with individual features being planned at 1:20, or at 1:10 where additional detail was required. All plans, sections and profiles were related to Ordnance Datum, in metres.

3.3 Finds collection policy

Artefactual material was collected according to an explicit sampling strategy. Material which was obviously modern in date, and derived from unstratified contexts was not kept unless it was of exceptional intrinsic interest. Preference was given to the collection and retention of stratified assemblages from *in-situ* deposits.

Material discarded as a consequence of this policy was described and quantified in the field. This involved very basic analyses such as counting artefacts, and assigning finds to broad categories, e.g. ceramic building material.

3.4 Monitoring of fieldwork

Dinah Saich of SYAS visited the site to confirm work was being carried out satisfactorily and to ensure the aims of the project design were met. Contact was also made towards the end of the mitigation work in order to sign off the site to the clients.

4 ARCHAEOLOGICAL SUMMARY

The initial archaeological evaluation carried out by ARCUS had been designed to assess the extent of preservation within the site area. The evaluation attempted to locate an area of 19th-century back-to-back housing, as well as a 19th-century comb factory. The back-to-back housing was identified in two evaluation trenches, however, the comb factory was not identified. The results of the archaeological evaluation are covered in ARCUS report 1040b.2(1) (Cobbold, 2008). SYAS then decided that a scheme of archaeological mitigation should be implemented. The mitigation took the form of an open area excavation, stripping an area of 20m x 25m in the northern third of the site (**Illustration 2**).

The site was opened by mechanical excavator under supervision from a suitably experienced ARCUS archaeologist. The initial site strip revealed rows of back-to-back housing along the line of Milton Lane and along the line of Headford Street. An open area was identified between these two rows of housing. This open area between the housing was labelled as Court No. 4 on the historic maps of the area. The entire area was cleaned by hand revealing the reasonably well preserved remains of cellar bottoms and stairwells leading into the cellaring (**Illustration 3, Plates 2, 3 and 4**).

The earliest features identified appeared to be a number of small cut features [4120], [4122], and [4124], identified below one of the cellar floors [4038] (**Illustrations 5 and 6, Plate 1**). These small features were cut into the natural clay. Cuts [4120] and [4122] were small sub-rectangular features, while cut [4124] was a small sub-circular/semi-circular feature. Cut [4120] was filled by deposit [4121], a black silty deposit containing the occasional small stone. Cut [4122] was filled by deposit [4123], a yellow-grey silt-clay. Cut [4124] was filled by deposit [4125], a dark yellow-grey silt-clay. Cut [4120] was unusual in that each corner of the sub-rectangular feature had a void extending away from the feature, suggesting that stakes/posts had been in position here but had been removed. The area around the cut features also had clusters of large nails and wood driven into the ground, these were marked on a plan and collected as small finds (numbers 1 to 6).

The next phase of building was the construction of the back-to-back housing. Cellar bottoms, cellar walls, and stairwells (**Plate 4**) leading into the cellars were identified. Group context numbers for the housing along Milton Lane included; [4001], [4002], [4003], [4004], [4005], [4006], [4007], and [4008]. Group context numbers for the housing along Headford Street included; [4073], [4075], [4114], and [4115]. The cellaring all had lime mortared sandstone walls with sandstone buttresses. All the stairwells were constructed from handmade red-brick, with sandstone slab steps. All the cellar floors were constructed from sandstone flagstones and had thin bedding layers of clinker and re-deposited clay overlying the natural clays. All the cellars were filled with a broadly similar rubble-rich demolition related backfill.

Likely to have been part of the same general phase of construction activity was an early drain, given the group context number [4145] (**Illustration 3, Plate 5**). This drain was typical of early 19th-century drainage in Sheffield, having had a sandstone slab base, handmade brick sides, and capped with more sandstone slab. Within the drain were two silt deposits [4129] and [4130]. This drain was built directly on top of the natural deposits, underlying the made ground sequence between the two rows of housing.

The next phase of activity on site was represented by the sequence of made ground deposits (**Illustration 4**) found in the area marked on historic maps as Court No. 4. No actual surfacing was located, suggesting that the original surface of cobbles, setts

or flagstones had been removed or reclaimed, probably during demolition.

Cut into the made ground deposits was a manhole and drain, issued group number [4081] (**Illustration 3**). This manhole has been assigned to a more recent phase than the courtyard as it was cut through the sequence of made ground forming the ground level for the courtyard and was constructed from machine made red-brick bonded with a modern cement type mortar.

The final phase of activity on site was represented by the various demolition fills within the cellars and the general rubble-rich overburden, also likely to have been laid during demolition activity.

5 SPECIALIST REPORTS

5.1 Ceramic artefacts

5.1.1 Introduction

The assemblage consisted of 504 sherds of pottery weighing 12658 grams and represented a maximum of 411 vessels although the maximum figure is likely to be an over-estimate. The data are summarised in **Table 3**.

5.1.2 Discussion

The earliest component of the pottery assemblage appears to be the Creamwares which occurred widely across the site, followed by the Pearlwares (plain and transfer printed). Creamwares were manufactured from around 1740 until about 1840. Generally speaking they became lighter in colour over time and it is suggested that the majority of the examples from Hodgson Street are late in date, both because they are very light (and were often difficult to distinguish from Pearlwares or Whitewares) and also because other characteristic 18th-century wares (notably vernacular tablewares) were almost entirely absent from the site. This sets the assemblage apart from others from the city in that the characteristic mid to later 18th and early 19th century component, which on many sites forms a distinctive horizon of deposition, was, if not entirely absent, then so different in character from the norm as established elsewhere as to require an alternative explanation to that generally advanced for its existence.

The uppermost contexts, [1000], [1002], [2000], [2005] and [3000] are described as 'made ground' and the latest pottery from these contexts is of later 19th-century date. The reason for the absence of pottery from context [4000] is unclear and it may be that a comparison between this context (and others from 1040c with similar characteristics) and those which contained pottery might be informative in casting light on the obscure question of the formation of such 'made ground' deposits.

Stratified deposits other than the upper contexts contained only small groups of pottery and the majority were from within the mitigation area (contexts [4058], [4062], [4063], [4068], [4071], [4073], [4117], [4125], [4140]) with only [2015], [2017], [3014] and [3015] representing stratified deposits from other areas of the site. In the case of all four of the latter contexts, the profile, including the date range, was similar to that from the 'made ground' contexts. The same seemed generally to be the case with the contexts from the mitigation area, although the individual groups were generally so small that it was difficult to draw definite conclusions from them. It might be possible to argue for a slightly earlier date for context [4117], although the presence of a sherd

of Slip Banded Cane Coloured (CC) ware would seem to indicate an early 19th-century rather than a late 18th-century date which might otherwise be arguable.

Overall, the assemblage from Hodgson Street is one which has both similarities and differences from comparable groups from other sites in the city. It is probable that the actual significance of the assemblage will only become clear when it can be compared with the much larger groups from London Road, St Mary's Gate and, potentially, The Moor, should excavations take place prior to redevelopment in the latter area. The fact that the assemblage does not have the same compositional profile as others from Sheffield suggests that it will be of some significance in comparative terms and will probably prove to be as informative in this regard as it will be in relation to the occupation and history of the site itself.

5.1.3 Further work

The following work is required to produce a final report conforming to the requirements of the South Yorkshire Archaeology Service and currently applicable professional standards documents. If further work is anticipated on the site then the proposed programme of work should be delayed until fieldwork is complete so that all of the pottery from the site can be considered as a single assemblage.

- Identification and documentation of intra-context and cross-context joins with a view to identifying the nature of the formation processes that contributed to the creation of the site as excavated. It may also be necessary to mark some of the pottery (it is currently unmarked) in order to investigate the incidence of cross-context joins;
- Characterisation of the assemblage in terms of its compositional profile and internal characteristics, including fragmentation;
- Identification and recording of decorative motifs, designs and maker's marks, where possible supported by photographic illustration;
- Selection of material for illustration (digital scanning) to a maximum of ten items. No drawings will be required;
- Discussion of the assemblage by context and phase, in collaboration with the site director and other specialists in order to determine the nature of the deposits and the extent to which they can be connected with a particular property or depositional event;

Presentation of the data and discussion in a full report to conform to the requirements of ARCUS and the South Yorkshire Archaeology Service.

5.2 Clay pipe

5.2.1 Summary

A total of 69 fragments of clay pipe were recovered from Hodgson Street (ARCUS 1040b&c). These items were from 11 stratified contexts and are described below in **Table 4**.

5.2.2 Nature of sample

The majority of pipe fragments recovered were plain stems. Plain stems are difficult to date accurately and therefore can only be given a broad date range, but most are late 18th-or 19th-century. There were also two mouthpieces and six bowl fragments

recovered, of which only two bowls were complete. The grape vine decorated bowl from overburden [1000] and the smaller plain bowl from made ground [3015] both date to the mid-19th century. Both designs are typical of Sheffield produced clay pipes (*pers comm.* Susie White).

The remains of a yellow-brown glaze or wax was visible on several small stem fragments from overburden deposits [1000] and [2000]. Coating substances were occasionally used to smooth the area around the pipe mouthpiece or broken ends.

5.2.3 Recommendations

This assemblage consists primarily of plain stems, along with six bowl fragments and two mouthpiece fragments. Although two bowls were complete, both were retrieved from mixed made ground or overburden deposits. Although no further work is recommended, retention of the assemblage for the site archive is advisable.

5.3 Wood and leather

5.3.1 Summary

A total of six wood and leather items were recovered from Hodgson Street. These items were retrieved from four stratified contexts and are described below in **Table 5**.

5.3.2 Nature of Sample and Recommendations

All of the items in the leather and wood assemblage appear to be late 19th-or 20th-century in date. The items include a leather strap and hand-tool handle from cellar backfill [4063] and a paintbrush handle from overburden [3000]. These items may suggest a domestic setting. Due to the fragmentary nature of the material and small size of the assemblage, no further work is recommended.

5.4 Shell

5.4.1 Summary

A total of 26 fragments of shell, including one worked fragment were recovered from Hodgson Street. These items were recovered from nine stratified contexts and are described below in **Table 6**.

5.4.2 Nature of Sample

Many of the shell fragments recovered from Hodgson Street are typically edible species, which are often found in large quantities on post-medieval sites. The common oyster (*Ostrea edulis*), the common mussel (*Mytilus edulis*) and cockle (*Cerastoderma sp.*) are all represented in this sample. These are all likely to be evidence of kitchen waste and refuse disposal.

A few fragments of worked shell were also recovered from site. These include debris from button making, in contexts [3000] and [4063]. These items are mostly flat fragments of mother-of-pearl type shell with flat sawn edges. On at least one fragment from [4063] the saw marks are curved, indicating the use of a holesaw. Several fragments have 'cut out' circular areas, which would have formed button blanks. A fragment of particularly thick worked shell from [3000] is likely to be from some kind of large tropical conch shell. The button blanks were probably made using a home-made holesaw to cut as many buttons as possible from one shell (*pers comm.*

Ken Hawley). These items may be late-19th-or early 20th-century in date.

Unfortunately, these manufacturing remnants were recovered from rubble overburden [3000] and cellar infill [4063], and do not form a coherent picture of manufacture or confirm that work such as this was taking place on site.

5.4.3 Recommendations

Due to the small size and fragmentary nature of the assemblage, no further work is recommended. However, deposition of the worked shell fragments with the Hawley Collection is suggested.

5.5 Glass

5.5.1 Nature of sample

A total of 32 glass fragments, listed in **Table 7**, were recovered from Hodgson Street, from ten stratified contexts. The vast majority (87.5%, n=28) of the glass recovered was 'container' glass, including a large number of complete or near complete bottles and jars. Around 6.25% (n=2) of the assemblage was made up of window glass, and a further 6.25% (n=2) of the assemblage was made up of 'other' fragments.

5.5.2 Containers

Of the 18 complete bottles in the assemblage, a total of seven were probable medicine, toiletry or cleaning product bottles. Five bottles were comestible containers, whilst five were beverage containing bottles. An ink well or similar was recovered from [4074].

Medicine, toiletry and household

Unmarked corked medicine bottles were recovered from cellar backfills [4061] and [4063], both of which still contain some kind of strong smelling fluid. A clear square bottle from cellar backfill [4074] was embossed with horizontal measure lines and 'TABLESPOONS' indicating it was a medicine to be taken orally. A round brown bottle with a plastic bottle top from [4074] was labelled as a 'MELRY PRODUCT' and may also have contained medicine, although searches for that name have failed to positively identify the maker or product. A small jar from [4061] was marked 'BOOTS / THE CHEMISTS' and is likely to be early 20th-century in date.

A jar bearing the trademark name 'Brylcreem' was recovered from [4074] and would have contained a men's hair care product. The design of the jar is heart-shaped, with two horizontal indentations on each side. This distinctive design of jar features in several Brylcreem advertisements of the early 1950s (see **Plate 6**) and is likely to date the deposition of [4074] to the mid-20th-century.

A clear round bottle from [4074] containing a silver coloured solvent based substance had the remains of a paper label adhering to it. Although badly degraded, several words including 'lacquer', 'cream' and 'household' were visible and are likely to point to this product being a furniture polish or similar.

Comestibles

About five complete vessels recovered were food product containers. The same design of Golden Syrup jar was recovered from cellar backfill [4058] and [4063]. This may indicate that the backfilling of these cellars was contemporaneous. Although Tate and Lyle's Golden Syrup is more often associated with a metal tin, it is possible this

glass jar was produced during or just after World War II when metal was at a premium. This may date the deposition of these backfills to the mid-20th-century. A large jar labelled with 'HORLICKS' was found in cellar backfill [4074] and would have contained a powdered malted milk drink product. Horlicks became popular in the early 20th century and continues to be produced today.

Of interest was a clear trapezoidal jar from [4074], which was embossed 'L.A. Parson & Sons Ltd / Burry Port' on the base. It is likely that this jar contained cockles or mussels and would have been produced at Burry Port in South Wales by Leslie Parsons and Sons. This company started trading in 1947 and continues to produce shellfish products. This indicates post-1947 date for the deposition of [4074].

Beverages

Five possible beverage bottles were recovered, three of which were from [4074]. These include a large brown beer or liquor bottle, a green wine bottle and a possible milk bottle. All of these bottles are modern looking, and date to the mid-20th century. Two other beverage bottles were recovered from cellar backfill [4061] and include a small brown beer bottle and a possible soda, pop or water bottle. This bottle is clear and is embossed 'SOLE PROPERTY OF LAWS' which may be a company or brand name.

5.5.3 Other glass

A single white opaque lampshade fragment was retrieved from [4074]. A clear glass marble was recovered from [4063]. These items may come from a domestic setting.

5.5.4 Window glass

Just two fragments of ordinary window glass were recovered, both from overburden deposit [1000].

5.5.5 Stratigraphic discussion

The glass assemblage from Hodgson Street for the most part is mid-20th-century in date. Cellar backfills such as [4058], [4061] and [4074] appear to be roughly contemporary and contain examples of branded products such as Brylcreem, Horlicks and Tate's Golden Syrup which were all popular in the early 20th century. A jar from [4074] would have contained mussels or cockles, and was produced in Wales post-1947. This provides a *terminus post quem* of 1947 for deposit [4074]. Whilst the very fragmentary glass from other contexts is impossible to date accurately, a complete machine made jar from overburden [3000] probably dates this deposit to the early 20th century.

5.5.6 Recommendations

Whilst no further work is recommended, it is advisable to retain a selection of the complete bottles for the site archive. The items to be retained have been highlighted in the glass assessment data table.

5.6 Ceramic building material

5.6.1 Summary

A total of 26 fragments of ceramic building material (CBM) were recovered from five stratified contexts, all of which were overburden or backfill deposits. These items are

described below in **Table 8**.

5.6.2 Nature of sample and recommendations

The majority of fragments of ceramic building material in this assemblage appear to be 20th-century in date. Deposits [2000], [2005], [3000], [4062] and [4063] all contain fragments of modern looking glazed tile. It is likely that the fragments from overburden deposits [2000] and [3000] as well as made ground [2005] are kitchen or bathroom tiles dating to the later part of the 20th century. These fragments suggest a domestic setting. There were no partial or complete bricks recovered and only a single fragment of possible roof tile. A number of painted wall plaster and concrete fragments were recovered from [2000], which are likely to be 20th-century in date. No further work is recommended on this assemblage.

5.7 Crucible fragments and other refractory materials

5.7.1 Introduction

The crucible fragments and refractory materials recovered from the site have been examined to assess their archaeometallurgical significance and potential to provide information about activities at the site. The historical and archaeological contexts of the site and individual pieces have been considered during this assessment. **Table 9** below summarises the findings of this assessment.

5.7.2 Discussion

The assemblage is principally made up of used steelmaking and possibly brass founding crucibles. The assemblage also contains one fragment of slagged refractory stone. The pieces within the assemblage were all recovered from contexts that are thought to date from the mid-late 19th century. Crucibles used in the 'Huntsman' steelmaking process and, to a lesser extent those used for brass founding, typically had a very short service life and were often discarded after one day's use. Fragments of used crucibles are a relatively common archaeological find within Sheffield. Although common, used crucible fragments can be of archaeometallurgical significance when recovered from particular contexts.

The presence of possible brass founding crucibles in the assemblage is a little more unusual in Sheffield, although not entirely surprising, especially given the amount of non-ferrous metals that would have been produced and used in the cutlery and tool-making trades.

Unfortunately, the material from Hodgson Street covered by this assessment was not recovered from contexts that can be related to their production or use, this means that the assemblage is of very limited archaeological potential.

5.7.3 Recommendations

No further work is recommended on the material covered by this assessment and the items can be disposed of in the normal manner.

5.8 Metalliferous process residues

5.8.1 Introduction

The fragments of possible metalliferous process residues recovered from the site

have been examined to assess their archaeometallurgical significance and potential to provide information about activities at the site. The historical and archaeological contexts of the site and individual pieces have been considered during this assessment. **Table 10** below summarises the findings of this assessment. It should be noted that, as no scientific or chemical analysis has been performed on the residues, the findings of this assessment should be treated as provisional.

5.8.2 Discussion

Given the nature of the individual pieces and their archaeological contexts, the assemblage is of very limited archaeometallurgical potential. Further analysis of the material is highly unlikely to add to existing knowledge of the site or surrounding area.

5.8.3 Recommendations

No further work is recommended on the material covered by this assessment and the items can be disposed of in the normal manner.

5.9 Ferrous and non-ferrous metals

5.9.1 Summary

A total of 41 ferrous objects and 26 non-ferrous objects were recovered from Hodgson Street. These items were retrieved from 11 stratified and one unstratified context and are described below in **Tables 11 and 12**.

5.9.2 Nature of sample

The ferrous assemblage from Hodgson Street contains a number of items that may be associated with the demolition of back-to-back housing, such as a poor quality fire grate from [4058] and part of a bedroom fireplace surround from [4074]. It is possible that some of the metal material recovered, such as the material from cellar fill [4061] and the copper lamp part from [4062] was originally collected for scrap by the inhabitants (*pers comm.* Ken Hawley). A filecutter's hammer was recovered from overburden [2000], which would have been used in conjunction with a small chisel to cut lines or 'teeth' into the surface of blank files (*pers comm.* Rod Mackenzie). Its inclusion in a general rubble deposit does not indicate work was necessarily taking place on-site however.

The non-ferrous assemblage contains a selection of domestic items that could be associated with the demolition of housing, including coat and hat hooks from [4062]; a light fitting type flange from [2000]; and a sash window latch from [4063]. Items such as roofing nails from [4063] and slate hooks from cellar backfill [4068] and overburden [3000] are also indicative of general demolition deposits. Of interest was a folded tin advertisement from demolition fill [4068] (**Plate 1**). The sign was advertising Cherry Blossom boot polish, which was manufactured by the Mason brothers from 1907 onwards in London. The sign itself is likely to be 1930s in date.

An unstratified bronze issue half-penny coin recovered from Hodgson Street dates between 1838 and 1860 and probably indicates some mid-19th-century activity on site.

5.9.3 Recommendations

Although the ferrous and non-ferrous assemblage is numerous, it is unlikely to provide further archaeological information. The assemblage may be disposed of in

the usual manner but selected items highlighted in **Table 12** should be retained for the site archive for future reference.

5.10 Animal bone

In total, nine animal bone fragments were recovered from Hodgson Street. These items included worked and unworked bone, and were recovered from five stratified contexts, all of which were overburden or backfill deposits. These items are described below in **Table 13**.

5.10.1 Summary and Recommendations

The unworked animal bone assemblage from Hodgson Street is small and fragmentary. It is likely that the butchered mammal rib fragments from [2000] and [3000] represent kitchen waste debris. The worked bone assemblage includes a sawn off-cut from overburden [1000] and two bone objects from backfill [4074]. These items included a bone or ivory tea knife handle and a crochet hook. Crochet became popular in Europe during the 19th century and crochet hooks were usually made of natural materials such as bone and wood until the mid-20th century. The knife handle from [4074] is likely to be late Victorian or early Edwardian in date and would have formed part of a high quality 'afternoon tea' set of cutlery (*pers comm.* Ken Hawley). These kinds of items may indicate a domestic setting. Due to the fragmentary nature and small size of the assemblage, no further work is recommended. However, the retention of the worked bone for the site archive is advisable.

5.11 Miscellaneous items

5.11.1 Summary

23 miscellaneous items were recovered from Hodgson Street. The material types represented in the miscellaneous assemblage include ceramic, plastic and stone, and are described below in **Table 14**.

5.11.2 Nature of sample and recommendations

The miscellaneous items presented here are for the most part 20th-century objects. The plastic items from overburden [3000] include a bakelite furniture handle and a nylon arrow from a child's game or similar, which probably date [3000] to the second half of the 20th century. The plastic items recovered from cellar backfill [4074] include a green nylon toothbrush and parts of an air-fix model kit. Nylon toothbrushes became commercially manufactured in 1938 and it is likely the model parts are parts of a World War II 'Churchill' tank (*pers comm.* Justin Wiles), which would likely date the deposition of [4074] to the mid-20th century. Of interest in this assemblage was a synthetic fibre or bakelite helmet from cellar backfill [4063]. This is likely to have been commercially produced by Plasfort during the Second World War for civilian use, since helmets like this are not known to be linked to any part of the military or civil defence.

No further work on this assemblage is recommended, although the retention of the Plasfort helmet for the site archive is advisable

6 DISCUSSION

The work carried out at Hodgson Street was intended to locate and characterise any remains relating to former back-to-back housing and associated structures along Headford Street and the former Milton Lane, the remains of the courtyard between these rows of housing and any earlier structures or features.

A number of very small features, [4120], [4122] and [4124], were identified cut into the natural clay below a cellar floor. These features may have pre-dated the construction of the housing, however as some of the original sandstone flagstones had also been removed at some point the cut features may have been dug after the removal of the floor. A single sherd of burnt bone china dating from the 19th century was recovered from the fill of one of these cut features. This supports the theory that these were not earlier features and that they were dug at some point after the construction of the back-to-back housing.

Two rows of reasonably well-preserved cellar bottoms were revealed, one along Headford Street and one along the former Milton Lane. These were filled with demolition rubble and numerous artefacts dating to the earlier part of the 20th-century were uncovered in the cellar bottoms. The date range of the artefacts found in the cellars corresponds with the timing of the general slum clearances from the 1940s onwards.

No sign of any courtyard surfacing was located. The sub yard sequence containing 19th-century artefacts was still in place.

Dr. Chris Cumberpatch has recommended that the ceramic artefacts retained from site are subject to a full characterisation with detailed recording and illustration of certain artefacts, to be presented in a full report.

No further reporting is recommended on other artefacts although a number of items have been recommended for retention by Sheffield Museums.

7 ARCHIVE

The site archive will be deposited with Sheffield City Museum, Weston Park under accession number SHEFM:2008.21

8 BIBLIOGRAPHY

Department of Environment, 1990. *PPG 16 – Planning Policy Guidance: Archaeology and Planning*

May, R., 2006. *Archaeological Desk-Based Appraisal of land at Hodgson Street, Sheffield, South Yorkshire*. Unpublished ARCUS Report 1040.1

Cobbold, T., 2008. *Assessment Report for Trial Trenching on land at Hodgson Street, Sheffield, South Yorkshire*. Unpublished ARCUS report 1040b.2(1)

9 ILLUSTRATIONS

10 PLATES



Plate 1 – Cut features [4120], [4122] and [4124], facing northwest



Plate 2 – Row of cellars along the former Milton Lane, facing north

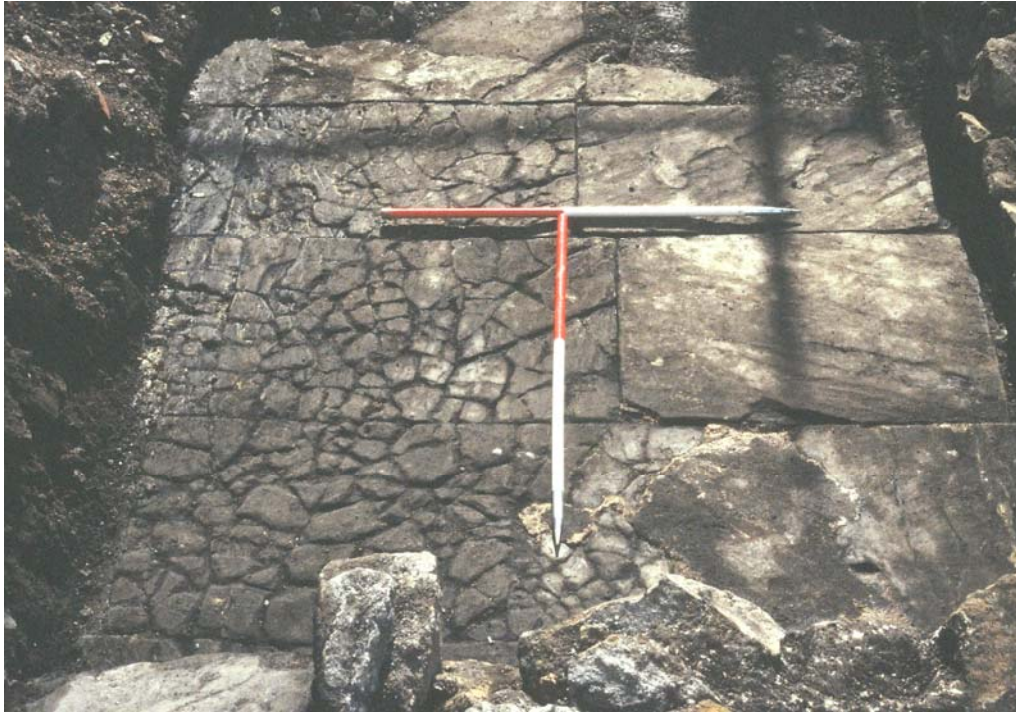


Plate 3 – Cellar floor [4131], facing southwest



Plate 4 – stairwell structure above cellar floor [4091], facing southeast



Plate 5 – drain [4145], facing south

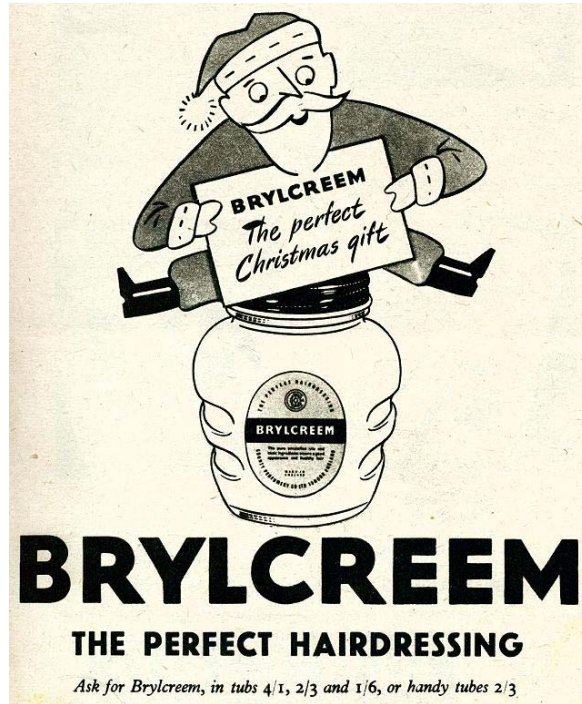


Plate 6 – Brylcreem advertisement from the 1950s

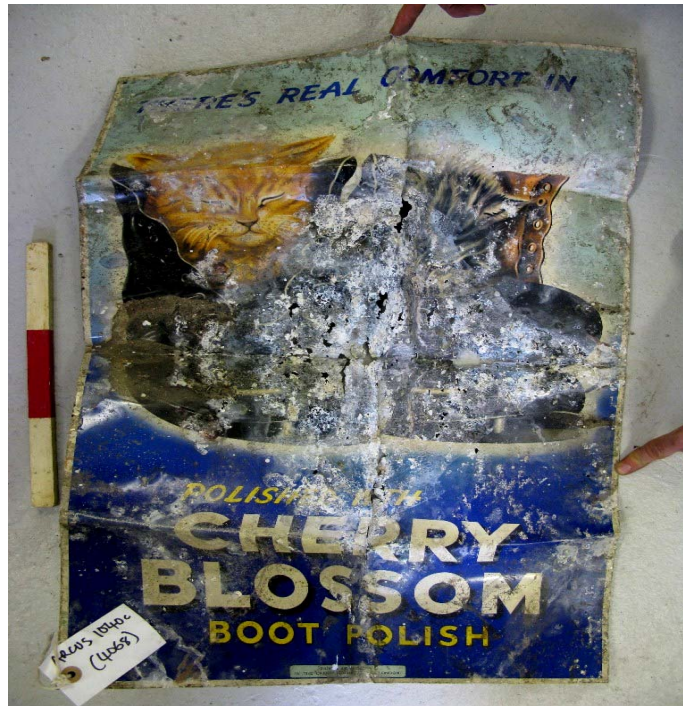


Plate 7 – Cherry Blossom boot polish advertisement from [4068]

11 TABLES

Table 1 – list of contexts from evaluation phase

Site sub-division	Context number	Context type	Description
Trench 1	1000	Deposit	rubble rich made ground/overburden
Trench 1	1001	Structure	N-S running sandstone wall
Trench 1	1002	Deposit	made ground W side of [1001]
Trench 1	1003	Structure	N-most of 3 brick abutments to [1001]
Trench 1	1004	Structure	Middle of 3 abutments to [1001]
Trench 1	1005	Structure	S-most of 3 abutments to [1001]
Trench 1	1006	Structure	concrete in SE corner of Tr 1
Trench 2	2000	Deposit	rubble rich made ground/overburden
Trench 2	2001	Structure	E-W running sandstone wall, N end of trench
Trench 2	2002	Structure	N-S running sandstone wall, E side of trench
Trench 2	2003	Structure	N-S running sandstone wall, middle of trench
Trench 2	2004	Structure	RB vaulting E side of [2002]
Trench 2	2005	Deposit	clayey made ground between [2002] and [2003]
Trench 2	2006	Structure	modern concrete/pipe between [2002] and [2003]
Trench 2	2007	Structure	NE-SW running modern drain
Trench 2	2008	Cut	cut for [2007]
Trench 2	2009	Deposit	RB packing and backfill around [2007]
Trench 2	2010	Structure	N-S running frogged RB cellar wall
Trench 2	2011	Structure	E-W running frogged RB wall
Trench 2	2012	Structure	modern concrete cellar floor
Trench 2	2013	Deposit	grey-brown sand-silt, N end of trench
Trench 2	2014	VOID	VOID
Trench 2	2015	Deposit	grey redeposited clay N of [2001]
Trench 2	2016	Structure	stairwell structure E of [2002]
Trench 2	2017	Deposit	grey clay below [2005]
Trench 2	2018	Deposit	silty clay below [2015]
Trench 2	2019	Deposit	Clay NATURAL
Trench 3	3000	Deposit	rubble rich made ground/overburden
Trench 3	3001	Structure	E-W running sandstone wall
Trench 3	3002	Structure	coal chute within [3001]
Trench 3	3003	Structure	N-S running sandstone wall
Trench 3	3004	Structure	Remnants of collapsed RB vaulting
Trench 3	3005	Deposit	Rubble around and under [3004]
Trench 3	3006	Structure	Cobble
Trench 3	3007	Structure	E-W running RB wall, S part of stairwell
Trench 3	3008	Structure	Short length E-W RB wall, part of stairwell
Trench 3	3009	Structure	flagstone floor S of [3007]
Trench 3	3010	Deposit	clay and rubble deposit seen N of [3007]
Trench 3	3011	Structure	E-W drain
Trench 3	3012	Structure	NW-SE drain, N of two
Trench 3	3013	Structure	NW-SE drain, S of two
Trench 3	3014	Deposit	clinker bedding layer for [3009]
Trench 3	3015	Deposit	made ground beneath [3014]
Trench 3	3016	Structure	N-S return of [3007]

Site sub-division	Context number	Context type	Description
Trench 3	3017	Structure	E-W RB wall, butts N end of [3016]
Trench 3	3018	Structure	flagstone floor N of [3017]
Trench 3	3019	Deposit	made ground under [3018]
Trench 3	3020	VOID	VOID
Trench 3	3021	Deposit	made ground over and around drains at N end of trench
Trench 3	3022	Structure	remnants of springer for RB vaulting
Trench 3	3023	Deposit	Clay NATURAL beneath [3014] and [3019]

Table 2 – list of contexts from mitigation phase

Site code	Context number	Context type	Description
1040c	4000	deposit	general rubble overburden
1040c	4001	group	NE cellar of row along Milton Lane
1040c	4002	group	cellar W of [4001]
1040c	4003	group	cellar W of [4002]
1040c	4004	group	cellar W of [4003]
1040c	4005	structure	SE cellar of row along milton Lane (S of [4001])
1040c	4006	group	cellar W of [4005]
1040c	4007	group	cellar W of [4006]
1040c	4008	group	cellar W of [4007]
1040c	4009	structure	N-S running sandstone wall - E limit of excavation
1040c	4010	structure	E-W running sandstone wall - runs W from [4009]
1040c	4011	structure	N-most buttress on W face of [4009]
1040c	4012	structure	S-most buttress on W face of [4009]
1040c	4013	structure	sandstone slab between [4011] and [4012]
1040c	4014	structure	short E-W RB wall - part of stairwell for [4005]
1040c	4015	structure	E-W wall - N part of stairwell for [4005]
1040c	4016	structure	N-S wall - part of stairwell for [4005]
1040c	4017	structure	RB and sandstone steps - S of [4015]
1040c	4018	structure	sandstone floor between [4014] and [4010]
1040c	4019	cut	cut into natural - W of floor [4018]
1040c	4020	deposit	fill of [4019]
1040c	4021	structure	short, truncated, length of sandstone wall - runs N from [4010]
1040c	4022	structure	originally same wall as [4021]
1040c	4023	structure	RB wall between [4022] and [4016] - part of stairwell for [4001]
1040c	4024	structure	short E-W RB wall - part of stairwell for [4001]
1040c	4025	structure	N-most buttress in cellar [4006]
1040c	4026	structure	S-most buttress in cellar [4006]
1040c	4027	structure	sandstone floor in cellar [4006]
1040c	4028	structure	E-W RB wall- part of stairwell for [4001]
1040c	4029	structure	E-W RB wall- part of stairwell for [4001]
1040c	4030	structure	sandstone and RB steps for stairwell into cellar [4006]
1040c	4031	structure	fragmentary N-S sandstone wall - original W wall of cellar [4006]

Site code	Context number	Context type	Description
1040c	4032	structure	E-W sandstone wall - same original wall as [4010]
1040c	4033	structure	N-S sandstone wall - E wall of cellar [4007]
1040c	4034	structure	N-S sandstone wall - wall between cellars [4007] and [4008]
1040c	4035	structure	N-most buttress on E face of [4034]
1040c	4036	structure	S-most buttress on E face of [4034]
1040c	4037	deposit	ashy deposit between [4035] and [4036]
1040c	4038	structure	sandstone floor of cellar [4007]
1040c	4039	structure	E-W RB wall - back wall of stairwell for [4003]
1040c	4040	structure	short E-W RB wall - part of stairwell for [4003]
1040c	4041	structure	N-S RB wall - runs N from [4039]
1040c	4042	structure	short RB wall - part of stairwell for [4007]
1040c	4043	structure	E-W RB wall - runs between [4034] and [4041]
1040c	4044	structure	sandstone and RB steps for stairwell into cellar [4007]
1040c	4045	structure	buttress seen on E face of [4034] - in cellar [4003]
1040c	4046	structure	N-S sandstone wall - N wall of cellar [4008]
1040c	4047	structure	N-most buttress on W face of [4046]
1040c	4048	structure	S-most buttress on W face of [4046]
1040c	4049	structure	E-W RB wall - runs W from [4034]
1040c	4050	structure	short E-W RB wall - part of stairwell for [4004]
1040c	4051	structure	N-S RB wall - runs N from [4049]
1040c	4052	structure	short E-W RB wall - runs E from [4046]
1040c	4053	structure	E-W RB wall between [4046] and [4051]
1040c	4054	structure	sandstone and RB steps into cellar [4008]
1040c	4055	structure	sandstone floor in cellar [4008]
1040c	4056	deposit	coke/coal in corner of cellar [4008]
1040c	4057	deposit	demo fill of [4001]
1040c	4058	deposit	demo fill of [4002] and [4006]
1040c	4059	deposit	demo fill of [4003]
1040c	4060	deposit	demo fill of [4004]
1040c	4061	deposit	demo fill of [4005]
1040c	4062	deposit	demo fill of [4007]
1040c	4063	deposit	demo fill of [4008]
1040c	4064	deposit	demo fill between [4014] and [4015]
1040c	4065	deposit	demo fill between [4023] and [4024]
1040c	4066	deposit	demo fill between [4028] and [4029]
1040c	4067	deposit	demo fill between [4039] and [4040]
1040c	4068	deposit	demo fill between [4042] and [4043]
1040c	4069	deposit	demo fill between [4049] and [4050]
1040c	4070	deposit	demo fill between [4052] and [4053]
1040c	4071	deposit	clay made ground between [4031] and [4033]
1040c	4072	deposit	NATURAL
1040c	4073	group	cellar W of original evaluation trench
1040c	4074	deposit	backfill of cellar [4073]
1040c	4075	group	cellar E of [4073]
1040c	4076	deposit	backfill of cellar [4075]
1040c	4077	structure	concrete drain cover
1040c	4078	structure	RB drain structure (manhole)

Site code	Context number	Context type	Description
1040c	4079	structure	ceramic drain pipe
1040c	4080	structure	RB wall near [4078]
1040c	4081	group	manhole/drain
1040c	4082	structure	N-S running sandstone wall - W of cellar [4073]
1040c	4083	structure	E-W running sandstone wall - N of cellar [4073]
1040c	4084	structure	N-S running sandstone wall - between cellars [4073] and [4075]
1040c	4085	structure	RB roof arch on W cellar [4073]
1040c	4086	structure	RB roof arch on E cellar [4073]
1040c	4087	structure	N.Buttress on E of wall [4082]
1040c	4088	structure	S Buttress on E of wall [4082]
1040c	4089	structure	coal chute in [4083]
1040c	4090	structure	blocking in coal chute [4089]
1040c	4091	structure	floor in cellar [4073]
1040c	4092	structure	wall in cellar [4073]
1040c	4093	structure	E-W running RB wall - in S of cellar [4073]
1040c	4094	structure	N-S RB wall between [4096] and [4097]
1040c	4095	structure	E-W RB wall on S of [4096]
1040c	4096	structure	W stairwell into cellar [4073]
1040c	4097	structure	E stairwell - S of cellar [4073]
1040c	4098	void	
1040c	4099	void	
1040c	4100	void	
1040c	4101	void	
1040c	4102	void	
1040c	4103	void	
1040c	4104	void	
1040c	4105	structure	N-S sandstone wall, E of [4104]
1040c	4106	structure	E-W sandstone wall
1040c	4107	structure	coal chute in [4106]
1040c	4108	structure	N-S sandstone wall - E end of cellars
1040c	4109	structure	Sandstone flagstone floor - -E end of cellars
1040c	4110	structure	E-W RB wall - N of [4111]
1040c	4111	structure	E-W RB wall - E end of cellars
1040c	4112	deposit	rubble backfill - E end of cellars
1040c	4113	structure	coal chute in [4106] - E-most
1040c	4114	group	cellar E of evaluation trench
1040c	4115	group	cellar group E of [4114]
1040c	4116	deposit	rubble backfill - E end of cellar [4118]
1040c	4117	deposit	made ground under floor [4055]
1040c	4118	deposit	clinker bedding layer under floor [4038]
1040c	4119	deposit	redeposited layer under clinker [4118]
1040c	4120	cut	cut of larger sub-rectangular feature under [4119]
1040c	4121	deposit	fill of [4120]
1040c	4122	cut	cut for smaller rectangular feature under [4119]
1040c	4123	deposit	fill of [4122]
1040c	4124	cut	cut of sub-circular feature under [4119]
1040c	4125	deposit	fill of [4124]
1040c	4126	structure	RB NW -SE - N of [4127]
1040c	4127	structure	RB NW-SE - S of [4126]

Site code	Context number	Context type	Description
1040c	4128	structure	sandstone capping of [4126] and [4127]
1040c	4129	deposit	fill between [4126] and [4127]
1040c	4130	deposit	fill between [4126] and [4127] - below [4129]
1040c	4131	structure	floor in cellar [4114]
1040c	4132	deposit	demo in section below courtyard
1040c	4133	deposit	grey deposit between [4132] and [4134]
1040c	4134	deposit	brown deposit between [4132] and [4136]
1040c	4135	deposit	grey-yellow deposit between [4134] and [4136]
1040c	4136	deposit	bluish grey deposit between [4134] and [4137]
1040c	4137	deposit	blue-dark grey deposit below [4136]
1040c	4138	deposit	NATURAL
1040c	4139	deposit	made ground layer under flagstones [4018]
1040c	4140	deposit	made ground under floor [4091]
1040c	4141	deposit	clinker bedding layer under floor [4131]
1040c	4142	deposit	redeposited clay layer under floor [4131]
1040c	4143	deposit	clinker bedding layer under floor [4109]
1040c	4144	deposit	redeposited clay layer under floor [4109]

Table 3-Ceramic artefacts

Context	Type	No	Wt	ENV	Part	Form	Decoration	Date range	Notes
1000	?Pearlware	1	13	1	Ring foot base	Cup/bowl	Hand painted green stylised floral design inside base	c.1780 - c.1840	Rounded ring foot base; crazed and discoloured
1000	BGCW	1	5	1	BS	Pancheon	Brown glaze int	C18th - C19th	Pot disc; irregular but around 25mm diameter
1000	BGCW	1	36	1	BS	Pancheon	Brown glaze int	C18th - C19th	Pot disc; irregular between 42 and 48mm diameter
1000	BGCW	1	16	1	BS	Pancheon	Brown glaze int	C18th - C19th	Pot disc; half only
1000	BGCW	23	1044	23	BS	Pancheon	Brown glaze int	C18th - C19th	
1000	BGCW	7	864	7	Rim	Pancheon	Angular, square sectioned rims; brown glaze int	C18th - C19th	
1000	BGCW	1	40	1	Rim	Pancheon	Rounded rim, brown glaze int	C18th - C19th	
1000	BGCW	1	46	1	Rim	Pancheon	Sharply everted rim; brown glaze int	C18th - C19th	
1000	BGCW	1	88	1	Base	Pancheon	Brown glaze int	C18th - C19th	
1000	BGFW	1	14	1	Rim	Jar	Clubbed rim; brown glaze int & ext	C18th - EC19th	
1000	BGFW	3	25	3	BS	Hollow ware	Brown glaze int & ext	C18th - EC19th	
1000	BGFW	1	14	1	Base	Hollow ware	Brown glaze int only; footed base	C18th - EC19th	
1000	Blue Banded ware	1	14	1	BS	Hollow ware	Blue lines and bands ext	C19th	
1000	Blue Banded ware	1	1	1	Rim	Bowl	Blue line ext	C19th	
1000	Bone China	2	3	1	BS	Flatware	Overglaze oriental design int	C19th	?Porcelain
1000	Bone China	1	7	1	Rim	Flatware	Deep groove at edge of rim	M - LC19th	Odd sherd
1000	BSGSW	5	82	5	BS	Hollow ware	U/Dec	LC18th - C19th	
1000	BSGSW	1	22	1	Base	Hollow ware	U/Dec	LC18th - C19th	
1000	BSGSW	1	19	1	BS	Lid	Rouletted band around circumference	LC18th - C19th	
1000	BSGSW	1	22	1	BS	Hollow ware	Rouletted line ext	LC18th - C19th	
1000	BSGSW	1	7	1	BS	Hollow ware	Star stamped motifs ext	LC18th - C19th	

Context	Type	No	Wt	ENV	Part	Form	Decoration	Date range	Notes
1000	BSGSW	1	5	1	BS	Hollow ware	Incised lines ext	LC18th - C19th	
1000	Cane Coloured ware	4	50	3	Rim	Pie dish	U/Dec	C19th	
1000	Cane Coloured ware	3	37	3	Flat base	Pie dish	U/Dec	C19th	Use-wear on underside
1000	Cane Coloured ware	2	48	2	Ring foot base	Bowl	U/Dec	C19th	Rounded ring foot base
1000	Cane Coloured ware	1	15	1	Ring foot base	Bowl	U/Dec	C19th	
1000	Cane Coloured ware	1	45	1	Recessed base	Mug/jar	U/Dec	C19th	
1000	Cane Coloured ware	1	6	1	Rim	Jar	U/Dec	C19th	
1000	Cane Coloured ware	1	4	1	BS	Hollow ware	U/Dec	C19th	
1000	Cane Coloured ware	1	1	1	BS	Carinated bowl	U/Dec	C19th	
1000	Colour Glazed ware	2	3	1	BS	Hollow ware	Yellow finish int & ext	C19th	
1000	Creamware	6	21	5	BS	Hollow ware	U/Dec	c.1740 - c.1820	
1000	Creamware	1	17	1	Base	Pie dish	U/Dec	c.1740 - c.1820	
1000	Creamware	1	11	1	BS	Flatware	U/Dec	c.1740 - c.1820	
1000	Creamware	1	5	1	Rim	Plate	U/Dec	c.1740 - c.1820	
1000	Creamware	1	2	1	Rim	Hollow ware	U/Dec	c.1740 - c.1820	
1000	Creamware	1	12	1	BS	Carinated bowl	U/Dec	c.1740 - c.1820	
1000	Edged ware	6	48	6	Rim	Plate	Moulded 'Grass' pattern edge with blue paint	c.1810 - c.1830	
1000	Edged ware	1	12	1	Rim	Plate	Blue painted edge, no moulding	EC19th	
1000	Mocha ware	2	9	2	BS	Bowl	Blue Mocha tree ext on white band	C19th	
1000	Pearlware	1	3	1	Rim	Mug	Blue band with printed word; '...VOURIT...'; moulded line around rim	c.1780 - c.1840	
1000	Pearlware	1	3	1	Base	Plate	U/Dec	c.1780 - c.1840	
1000	Slip Banded CC ware	2	20	1	BS	Carinated bowl	Three thin white slip lines above carination and a wider blue line on body	C19th	
1000	Slip Banded CC ware	3	21	2	Rim	Bowl	Blue and white slip lines ext	C19th	

Context	Type	No	Wt	ENV	Part	Form	Decoration	Date range	Notes
1000	Slip Banded CC ware	1	5	1	Rim	Jar	Brown and white slip lines ext, slightly everted rim	C19th	
1000	Slip Banded CC ware	2	3	1	Rim	Bowl	Blue and white slip lines ext	C19th	
1000	Slip Banded CC ware	1	4	1	BS	Carinated bowl	Green slip lines ext	C19th	
1000	Slip Banded ware	3	8	1	Rim	Bowl	Blue lines below rim, broad brown band on body	C19th	
1000	Stoneware	2	18	1	BS	Bottle	Green stoneware	C19th	
1000	Stoneware	1	49	1	Base	Bottle	Green stoneware	C19th	
1000	Stoneware	1	91	1	Base	Flagon	Green stoneware with rouletted line around the edge of the base	C19th	
1000	Stoneware	1	124	1	BS	Hollow ware	Green stoneware, discoloured	C19th	Large lump of iron concretion attached to one edge
1000	TP Whiteware	3	80	1	Profile	Pie dish	Willow	M - LC19th	
1000	TP Whiteware	4	21	4	Rim	Dish/plate	Willow	M - LC19th	
1000	TP Whiteware	1	8	1	Rim	Plate	Willow	M - LC19th	
1000	TP Whiteware	1	18	1	Rim	Bowl	Blue printed floral motifs; flow blue design	c.1840+	
1000	TP Whiteware	1	8	1	BS	Hollow ware	Black printed design PClassical figure	M - LC19th	
1000	TP Whiteware	1	6	1	Base	Carver/server	PWillow	M - LC19th	Grooves on underside of base
1000	TP Whiteware	1	7	1	Rim	Plate	Floral design on rim	M - LC19th	
1000	TP Whiteware	1	2	1	Rim	Hollow ware	Floral design int & ext	M - LC19th	
1000	TP Whiteware	1	7	1	Rim	Flatware	Floral / arboreal design int	M - LC19th	
1000	TP Whiteware	2	8	2	BS	Hollow ware	Dark blue design ext	M - LC19th	Probably from the same vessel
1000	TP Whiteware	1	5	1	BS	Hollow ware	Blue figure ext with part of a word above	M - LC19th	
1000	TP Whiteware	1	35	1	BS	Hollow ware	Blue floral design on a cellular pattern background	M - LC19th	

Context	Type	No	Wt	ENV	Part	Form	Decoration	Date range	Notes
1000	TP Whiteware	2	8	2	Rim & BS	Hollow ware	Stylised floral design int, BS with a butterfly ext	M - LC19th	
1000	TP Whiteware	1	2	1	BS	Hollow ware	Floral design int & ext	M - LC19th	
1000	TP Whiteware	2	4	2	BS	Hollow ware	U/ID TP designs	M - LC19th	
1000	TP Whiteware	1	11	1	Ring foot base	Bowl	U/ID TP design int	M - LC19th	
1000	Whiteware	1	8	1	Handle	Mug	All-over blue finish	M - LC19th	
1000	Whiteware	2	35	1	BS	Hollow ware	U/Dec	C19th	
1000	Whiteware	4	50	4	Ring foot base	Bowl	U/Dec	M - LC19th	Rounded ring foot bases
1000	Whiteware	1	34	1	Ring foot base	Carinated bowl	U/Dec	M - LC19th	
1000	Whiteware	1	9	1	Footring base	Plate	U/Dec	M - LC19th	
1002	ƆPearlware	1	4	1	BS	Carinated bowl	U/Dec	c.1780 - c.1840	
1002	ƆWhiteware	1	9	1	Rim	Plate	U/Dec	M - LC19th	
1002	BGCW	2	116	2	BS	Pancheon	Brown glaze int	C18th - C19th	
1002	BGFW	1	7	1	BS	Hollow ware	Brown glaze int & ext	C18th - EC19th	
1002	BSGSW	1	35	1	Base	Bowl	U/Dec	LC18th - C19th	
1002	Creamware	1	18	1	Rim	Plate	U/Dec	c.1740 - c.1820	Very light Creamware, probably late; profiled int
1002	Creamware	1	5	1	BS	Flatware	U/Dec	c.1740 - c.1820	Abraded and discoloured
1002	Edged ware	1	6	1	Rim	Plate	Moulded 'Grass' pattern edge with blue paint	c.1810 - c.1830	
1002	Late Blackware	1	36	1	BS	Hollow ware	Black glaze int & ext on a fine dark red body	C18th	
1002	Slip Banded CC ware	1	5	1	Rim	Bowl	Thin white slip lines ext	C19th	
1002	Slip Banded CC ware	1	7	1	BS	Carinated bowl	Thin white slip lines ext	C19th	
1002	Slip Banded CC ware	1	6	1	BS	Hollow ware	Thin white slip lines and a narrow blue band ext	C19th	
1002	Stoneware	1	191	1	Base	Flagon	Stamped band around base of flagon	C19th	

Context	Type	No	Wt	ENV	Part	Form	Decoration	Date range	Notes
1002	TP Whiteware	1	2	1	BS	Cup/bowl	Chinese landscape ext	M - LC19th	
2000	ƆPearlware	1	8	1	Rim	Plate	Blue line around ext edge	c.1780 - c.1840	
2000	BGCW	3	84	3	BS	Pancheon	Brown glaze int	C18th - C19th	
2000	BGFW	1	14	1	BS	Hollow ware	Brown glaze int & ext	C18th - EC19th	
2000	Blue Banded ware	2	10	1	BS	Carinated bowl	Pale blue band ext above carination	C19th	Joins with a base from context 3000
2000	Blue Banded ware	2	5	1	BS	Hollow ware	Blue band ext	C19th	
2000	BSGSW	4	77	3	BS	Hollow ware	Brown ext, green int	LC18th - C19th	
2000	BSGSW	1	5	1	Rim	Jar	Lid seated rim	C19th	
2000	BSGSW	1	51	1	Rim	Jar	Three incised grooves on shoulder	C19th	
2000	Cane Coloured ware	4	16	4	BS	Hollow ware	U/Dec	C19th	
2000	Cane Coloured ware	3	58	1	Rim	Dish/bowl	U/Dec	C19th	
2000	Creamware	1	3	1	BS	Flatware	U/Dec	c.1740 - c.1820	
2000	Creamware	1	5	1	Recessed base	Jar	U/Dec	c.1740 - c.1820	
2000	Creamware	1	9	1	BS	Hollow ware	U/Dec	c.1740 - c.1820	
2000	Creamware	1	16	1	BS	Plate	U/Dec	c.1740 - c.1820	
2000	Edged ware	3	27	3	Rim	Plate	Moulded 'Grass' pattern edge with blue paint	c.1810 - c.1830	
2000	Pearlware	3	24	3	Recessed base & BS	Plate	U/Dec	c.1780 - c.1840	
2000	Relief Banded ware	2	9	2	BS	Hollow ware	Relief bands ext	C19th	
2000	Slip Banded CC ware	1	10	1	Rim	Hollow ware	Thin white slip lines ext	C19th	
2000	Slip Banded CC ware	1	13	1	Rim	Hollow ware	Narrow brown band below rim with thin white slip lines on body ext	C19th	
2000	Slip Banded CC ware	1	11	1	BS	Hollow ware	Thin green lines ext	C19th	
2000	Slip Banded CC ware	1	1	1	BS	Hollow ware	Blue lines and band ext	C19th	

Context	Type	No	Wt	ENV	Part	Form	Decoration	Date range	Notes
2000	Stoneware	1	12	1	BS	Hollow ware	Green stoneware	C19th	
2000	TP Pearlware	1	13	1	Recessed base	Plate	Willow	c.1780 - c.1840	
2000	TP Pearlware	1	3	1	BS	Hollow ware	Chinese landscape	c.1780 - c.1840	
2000	TP Whiteware	3	20	1	Flat base	Plate/server	Willow	M - LC19th	Discoloured ext
2000	TP Whiteware	1	10	1	Flat base	Plate/dish	Willow	M - LC19th	
2000	TP Whiteware	1	4	1	Recessed base	Plate	Willow	M - LC19th	
2000	TP Whiteware	2	13	2	Flat base	Plate	Willow	M - LC19th	
2000	TP Whiteware	1	2	1	BS	Plate	Willow	M - LC19th	
2000	TP Whiteware	1	5	1	BS	Plate	Willow	M - LC19th	
2000	TP Whiteware	1	5	1	Rim	Plate	Willow	M - LC19th	
2000	TP Whiteware	1	2	1	BS	Plate	Willow	M - LC19th	
2000	TP Whiteware	1	9	1	Footring base	Cup/bowl	U/ID TP decoration int & ext	M - LC19th	Carinated cup/bowl
2000	TP Whiteware	2	11	1	BS	Hollow ware	U/ID TP design: flow blue	c.1840+	
2000	TP Whiteware	3	23	2	Rim	Plate/server	Willow border	M - LC19th	Thick rims
2000	TP Whiteware	4	17	1	BS	Hollow ware	U/ID design showing a Venetian scene	M - LC19th	
2000	TP Whiteware	5	15	5	BS	Hollow ware	U/ID European scenes ext	M - LC19th	
2000	TP Whiteware	1	15	1	Rim & BS	Tureen lid	Willow	M - LC19th	
2000	TP Whiteware	1	15	1	Flat base	Dish/bowl	Willow	M - LC19th	
2000	TP Whiteware	1	12	1	Flat base	Dish/bowl	Willow	M - LC19th	
2000	TP Whiteware	1	1	1	Rim	Saucer	Chinese landscape design border	M - LC19th	
2000	TP Whiteware	1	6	1	Base	Flatware	Part of a coat of arms and writing; too small to identify	M - LC19th	
2000	TP Whiteware	1	5	1	Rim	Plate	Italian Scenes border	1801 - 1839	Don Pottery
2000	TP Whiteware	1	12	1	Base	Flatware	Willow	M - LC19th	
2000	TP Whiteware	1	5	1	Rim	Saucer	Chinese landscape	M - LC19th	

Context	Type	No	Wt	ENV	Part	Form	Decoration	Date range	Notes
2000	TP Whiteware	1	2	1	BS	Plate	Willow	M - LC19th	
2005	BGCW	2	259	2	Base	Jar/pancheon	Brown glaze int	C18th - C19th	
2005	BGCW	1	91	1	Base	Pancheon	Brown glaze int	C18th - C19th	Small footed base
2005	BGCW	11	245	11	BS	Pancheon	Brown glaze int	C18th - C19th	
2005	BGCW	1	130	1	BS	Hollow ware	Brown glaze int	C18th - C19th	Thick body sherd
2005	BGCW	1	167	1	Rim	Pancheon	Brown glaze int; sharply everted rim with brown glaze on top	C18th - C19th	
2005	BGCW	1	122	1	Rim	Pancheon	Brown glaze int; square sectioned rim with slight hammerhead profile	C18th - C19th	
2005	BGCW	1	85	1	Rim	Pancheon	Brown glaze int	C18th - C19th	Top of rim missing
2005	BGCW	1	30	1	Base	Pancheon	Brown glaze int	C18th - C19th	
2005	Blue Banded ware	1	2	1	Rim	Hollow ware	Blue slip lines and bands ext	C19th	
2005	BSGSW	2	56	2	BS	Hollow ware	U/Dec	C19th	
2005	BSGSW	1	34	1	Base	Bottle	U/Dec	C19th	
2005	BSGSW	1	14	1	Rim	Bowl	Stamped decoration ext	C19th	Clubbed rim
2005	BSGSW	2	21	2	BS	Hollow ware	Stamped decoration ext	C19th	
2005	Cane Coloured ware	1	92	1	Ring foot base	Bowl	U/Dec	C19th	Rounded ring foot base
2005	Cane Coloured ware	1	9	1	Handle	Jug	U/Dec	C19th	
2005	Cane Coloured ware	4	24	4	BS	Hollow ware	U/Dec	C19th	
2005	Cane Coloured ware	1	9	1	Rim	Pie dish	U/Dec	C19th	
2005	Creamware	3	43	3	Rim	Hollow ware	U/Dec	c.1740 - c.1820	Sharply everted rims
2005	Creamware	1	8	1	BS	Flatware	U/Dec	c.1740 - c.1820	
2005	Creamware	2	105	2	Footring base	Bowl	U/Dec	c.1740 - c.1820	Light Creamware flatter
2005	Creamware	1	5	1	Rim	Bowl	U/Dec	c.1740 - c.1820	
2005	Creamware	2	5	2	BS	Hollow ware	U/Dec	c.1740 - c.1820	

Context	Type	No	Wt	ENV	Part	Form	Decoration	Date range	Notes
2005	Creamware	1	5	1	BS	Plate	U/Dec	c.1740 - c.1820	
2005	Edged ware	1	5	1	Rim	Plate	Moulded 'Grass' pattern edge with blue paint	c.1810 - c.1830	
2005	Edged ware	1	6	1	Rim	Plate	Moulded 'Grass' pattern edge with blue paint	c.1810 - c.1830	
2005	Late Blackware	1	23	1	Rim & handle	Hollow ware	Black glaze ext & partially int	C18th	
2005	Mocha ware	1	4	1	BS	Hollow ware	Blue mocha tree ext on white band, with thin white slip lines below	C19th	
2005	Pearlware	5	27	5	BS	Hollow ware	U/Dec	c.1780 - c.1840	
2005	Pearlware	2	6	2	Rim	Plate	U/Dec	c.1780 - c.1840	
2005	Pearlware	1	15	1	BS	Plate	U/Dec	c.1780 - c.1840	
2005	Pearlware	1	6	1	Rim	Bowl	U/Dec	c.1780 - c.1840	
2005	Pearlware	1	4	1	Rim	Plate	U/Dec	c.1780 - c.1840	
2005	Pearlware	1	3	1	Footring base	Plate	U/Dec	c.1780 - c.1840	
2005	Slip Banded CC ware	1	32	1	Rim	Bowl	Brown and white slip bands ext	C19th	Folded clubbed rim
2005	Slip Banded CC ware	1	6	1	BS	Hollow ware	Brown and white slip lines ext	C19th	
2005	Stoneware	1	138	1	Base	Flagon	Rouletted line around base; green and brown patchy glaze	C19th	
2005	TP Bone China	1	1	1	Rim	Saucer	Chinese landscape border int	C19th	
2005	TP Bone China	1	2	1	Footring base	Flatware	Chinese landscape int	C19th	
2005	TP Pearlware	1	14	1	Flat base	pie dish	Chinese landscape int	c.1780 - c.1840	
2005	TP Pearlware	2	14	2	Recessed base	Plate	Willow	c.1780 - c.1840	
2005	TP Pearlware	1	9	1	Rim	Plate	Floral pattern on tendril background	c.1780 - c.1840	
2005	TP Pearlware	1	2	1	Rim	Dish/plate	U/ID but distinctive design int	c.1780 - c.1840	
2005	TP Whiteware	1	70	1	Rim	Hollow ware	Moulded rim with floral TP design on top of rim	M - LC19th	pie Chamberpot; distinctive folded rim
2005	TP Whiteware	3	14	3	BS	Plate	Willow	M - LC19th	

Context	Type	No	Wt	ENV	Part	Form	Decoration	Date range	Notes
2005	TP Whiteware	1	8	1	BS	Carinated bowl	U/ID Chinese landscape ext	M - LC19th	
2005	TP Whiteware	1	25	1	Rim	Jug	Chinese landscape style border	M - LC19th	
2005	TP Whiteware	1	7	1	Rim	Pie dish	Willow style border	M - LC19th	
2005	TP Whiteware	2	4	2	Rim & BS	Hollow ware	Floral pattern on a hexagonal cellular background	M - LC19th	
2005	TP Whiteware	1	4	1	Rim	Hollow ware	U/ID TP design int & ext	M - LC19th	
2005	TP Whiteware	1	9	1	Flat base	Dish/plate	Chinese landscape int	M - LC19th	
2005	TP Whiteware	1	1	1	BS	Flatware	U/ID design	C19th	
2005	TP Whiteware	1	9	1	Base	Flatware	Willow	M - LC19th	
2005	Whiteware	1	16	1	Rim	Bowl	Moulded rim	M - LC19th	
2015	ƆPearlware	3	12	1	Recessed base	Plate	U/Dec	c.1780 - c.1840	Crazed and discoloured
2015	BGCW	6	183	6	BS	Pancheon	Brown glaze int	C18th - C19th	One possible pot disc
2015	BSGSW	1	13	1	BS	Hollow ware	Stamped decoration ext	LC18th - C19th	
2015	BSGSW	1	10	1	BS	Hollow ware	U/Dec	LC18th - C19th	
2015	Cane Coloured ware	1	9	1	Handle	Hollow ware	U/Dec	C19th	
2015	TP Whiteware	1	7	1	Footring base	Cup/bowl	Pale blue 'Island' pattern int	M - LC19th	Crazed and discoloured
2015	TP Whiteware	3	5	2	BS	Hollow ware	U/ID TP design ext	M - LC19th	
2015	TP Whiteware	2	2	1	Rim	Hollow ware	Dark blue design int & ext	M - LC19th	
2015	Whiteware	1	1	1	BS	Hollow ware	N/A	M - LC19th	Ext surface flaked entirely
2017	Whiteware	1	9	1	BS	Flatware	U/Dec	M - LC19th	
3000	BGCW	7	393	7	BS	Pancheon	Brown glaze int	C18th - C19th	
3000	BGCW	2	257	2	Base	Pancheon	Brown glaze int	C18th - C19th	Use wear on underside of base
3000	BGCW	1	225	1	Rim	Pancheon	Brown glaze int; rectangular cross-section rim with two shallow grooves on top	C18th - C19th	

Context	Type	No	Wt	ENV	Part	Form	Decoration	Date range	Notes
3000	BGCW	1	152	1	Rim	Pancheon	Wide everted rim with glaze on flat top	C18th - C19th	
3000	BGCW	1	35	1	Rim	Bowl/pancheon	Brown glaze int, small clubbed rim	C18th - C19th	
3000	BGFW	1	18	1	Rim	Bowl	Brown glaze int & ext, everted slightly clubbed rim	C18th - EC19th	
3000	BGFW	1	37	1	BS	Hollow ware	Brown glaze int & ext	C18th - EC19th	Unusual white fabrics
3000	Blue Banded ware	1	21	1	Ring foot base	Carinated bowl	Pale blue band ext above carination	C19th	Joins with a sherd from context 2000
3000	BSGSW	1	28	1	BS	Hollow ware	U/Dec	C18th - C19th	
3000	BSGSW	1	14	1	Handle	Hollow ware	Lateral handle	C18th - C19th	
3000	BSGSW	1	7	1	Rim	Hollow ware	Applied decoration ext, probably a hunting scene	C19th	
3000	Cane Coloured ware	2	49	2	Flat base	Dish/bowl	U/Dec	C19th	
3000	Cane Coloured ware	2	69	2	Rim	Pie dish	U/Dec	C19th	
3000	Cane Coloured ware	1	52	1	Ring foot base	Bowl	U/Dec	C19th	
3000	Colour Glazed ware	1	11	1	BS	Hollow ware	Blue band on a shiny brown body	C19th	Possibly from a teapot
3000	Creamware	1	4	1	Rim	Plate	U/Dec	c.1740 - c.1820	
3000	Creamware	1	19	1	Footring base	Plate	U/Dec	c.1740 - c.1820	
3000	Edged ware	3	161	1	Profile	Dish	Moulded 'Grass' pattern edge with blue paint	c.1810 - c.1830	A much larger vessel than normal in Edged ware
3000	Edged ware	1	34	1	Rim	Deep dish	Wavy edge with blue paint but no moulding	c.1810 - c.1830	
3000	Edged ware	1	5	1	Rim	Plate	Moulded 'Grass' pattern edge with blue paint	c.1810 - c.1830	
3000	Pearlware	2	9	1	Rim	Plate	U/Dec	c.1780 - c.1840	
3000	Pearlware	1	13	1	BS	Flatware	U/Dec	c.1780 - c.1840	
3000	Slip Banded ware	1	17	1	BS	Carinated bowl	Two dark brown slip lines above carination and a broad brown band on the body	C19th	
3000	Sponged ware	1	3	1	BS	Hollow ware	Blue sponged decoration ext	c.1830+	

Context	Type	No	Wt	ENV	Part	Form	Decoration	Date range	Notes
3000	Stoneware	1	27	1	BS	Hollow ware	Green stoneware	C19th	
3000	TP Whiteware	3	53	1	Rim	Bowl/dish	Willow	M - LC19th	
3000	TP Whiteware	1	74	1	Ring foot base	Bowl	Elaborate curvilinear geometric design in centre of base internally	M - LC19th	
3000	TP Whiteware	1	18	1	Rim	Bowl	Willow border	M - LC19th	
3000	TP Whiteware	1	21	1	Base	Carver/server	Willow	M - LC19th	Grooves on underside of base
3000	TP Whiteware	1	22	1	Ring foot base	Bowl	U/ID TP design ext	M - LC19th	
3000	TP Whiteware	1	10	1	Rim	Flatware	Willow	M - LC19th	
3000	TP Whiteware	1	6	1	BS	Flatware	Willow	M - LC19th	
3000	TP Whiteware	1	1	1	Rim	Flatware	Flow Blue design	c.1840+	
3000	TP Whiteware	1	14	1	Base	Mug/jug	U/ID design ext	M - LC19th	
3000	URE	1	17	1	BS	Hollow ware	U/Dec	LC18th - C19th	Probably a flowerpot
3000	Whiteware	1	8	1	Footring base	Cup/bowl	Internal moulding	M - LC19th	
3000	Whiteware	1	1	1	BS	Flatware	U/Dec	M - LC19th	
3000	Whiteware	1	1	1	Rim	Hollow ware	Red lines int & ext below rim	M - LC19th	
3014	Creamware	1	1	1	BS	Hollow ware	U/Dec	c.1740 - c.1820	
3015	ƆPearlware	2	4	1	BS & handle stump	Hollow ware	U/Dec	c.1780 - c.1840	
3015	ƆWhiteware	1	1	1	BS	Flatware	U/Dec	C19th	Crazed and discoloured
3015	BGCW	1	8	1	BS	Bowl/dish	Brown glaze int	C18th - C19th	
3015	Blue Banded ware	1	46	1	Rim	Bowl	Blue bands ext, folded clubbed rim	C19th	
3015	BSGSW	1	4	1	BS	Hollow ware	U/Dec	C19th	
3015	Creamware	1	13	1	BS	Hollow ware	U/Dec	c.1740 - c.1820	Crazed and discoloured
3015	Jackfield ware	1	4	1	BS	Hollow ware	Moulded decoration ext	M - LC19th	Shiny finish, unlike Black Basalt

Context	Type	No	Wt	ENV	Part	Form	Decoration	Date range	Notes
3015	Slip Banded CC ware	1	9	1	Rim	Hollow ware	Thin white slip lines ext	C19th	
3015	Stoneware	1	1	1	BS	Hollow ware	Green stoneware	C19th	
3015	TP Whiteware	2	9	2	Footring base & BS	Plate	Willow	M - LC19th	
3015	URE	1	4	1	BS	Hollow ware	U/Dec	C18th - C19th	
3015	URE	1	6	1	BS	Hollow ware	U/Dec	C18th - C19th	
4058	Stoneware	1	107	1	Base	Bottle	Green stoneware	C19th	Stamped above base 'BOLTON... / SHEFFIELD ...'
4062	Stoneware	2	252	1	Base	Jar/flagon	Grey stoneware	C19th	
4063	BGCW	1	61	1	Rim	Pancheon	Brown glaze int	C18th - C19th	Rectangular profiled rim
4063	BGCW	2	94	2	BS	Pancheon	Brown glaze int	C18th - C19th	
4063	Cane Coloured ware	4	373	3	Rim & base	Bowl	U/Dec	LC19th - EC20th	Much larger than the normal Cane Coloured wares
4063	Stoneware	1	41	1	Base	Flagon	Rouletted band around base	C19th	
4063	Stoneware	21	1742	1	Profile	Stew pot	U/Dec	C19th	Globular stew pot with lateral handles and lid-seated rim
4063	Stoneware	1	7	1	BS	Hollow ware	U/Dec	C19th	
4063	TP Whiteware	1	12	1	BS	Flatware	TP rural scene int; cf. Eton College	M - LC19th	
4063	Whiteware	5	92	1	Profile	Saucer	U/Dec	MC19th - EC20th	
4068	Slip Banded CC ware	1	4	1	BS	Hollow ware	Blue and white slip lines ext	C19th	
4068	Whiteware	25	411	1	Profile	Plate	Blue band around ext edge	M - LC19th	Could be early C20th
4071	BGCW	1	195	1	Rim	Pancheon	Brown glaze int; sharply everted, flat topped rim with shallow groove on ext edge	C18th - C19th	
4071	Blue Banded ware	1	3	1	Rim	Bowl	Blue band below rim	C19th	

Context	Type	No	Wt	ENV	Part	Form	Decoration	Date range	Notes
4071	BSGSW	1	3	1	BS	Hollow ware	U/Dec	C19th	
4071	Cane Coloured ware	2	35	1	Rim & BS	Pie dish	U/Dec	C19th	
4071	Edged ware	1	23	1	Rim	Dish	Blue feathered paint on rim but no moulding	C19th	Probably later than normal Edged ware
4071	Jackfield ware	6	24	1	BS	Hollow ware	Shiny black finish over moulded decoration	M - LC19th	Shiny finish, unlike Black Basalt
4071	Mocha ware	2	4	1	BS	Hollow ware	Blue Mocha tree on a white slip band	C19th	
4071	TP Whiteware	1	7	1	BS	Hollow ware	Willow	M - LC19th	
4071	TP Whiteware	1	1	1	Footring base	Plate	Willow	M - LC19th	
4071	TP Whiteware	1	4	1	BS	Flatware	U/ID TP design, Flow Blue	c.1840+	
4073	BGCW	1	92	1	Rim	Bowl/pancheon	Brown glaze int & on clubbed rim	C18th - C19th	Smaller pancheon with round clubbed rim
4073	BGCW	1	28	1	BS	Pancheon	Brown glaze int	C18th - C19th	
4073	Stoneware	1	42	1	BS	Hollow ware	Green stoneware	C19th	
4073	TP Whiteware	1	41	1	Rim	Dish	Willow	M - LC19th	
4117	BSGSW	1	13	1	Base	Hollow ware	U/Dec	C18th - C19th	
4117	Creamware	1	12	1	Flat base	∅Dish/ flatware	U/Dec	c.1740 - c.1820	
4117	Creamware	1	4	1	Rim	Plate	U/Dec	c.1740 - c.1820	
4117	Pearlware	1	1	1	Footring base	Plate	U/Dec	c.1780 - c.1840	
4117	Slip Banded CC ware	1	3	1	Rim	Bowl	Thin white slip lines and narrow blue band ext	C19th	
4117	TP Pearlware	1	1	1	BS	Flatware	Blue TP Chinese landscape int	c.1780 - c.1840	
4125	Bone China	1	1	1	Rim	Flatware	U/Dec	C19th	Burnt
4140	Porcelain	1	5	1	Footring base	Plate	U/Dec	C18th - C19th	∅Chinese / ∅English
4140	Stoneware	1	7	1	BS	Hollow ware	Green glaze int & ext	C19th	
4140	TP Whiteware	2	6	1	Footring base	Plate	Pale blue TP Chinese landscape	M - LC19th	

Context	Type	No	Wt	ENV	Part	Form	Decoration	Date range	Notes
4140	TP Whiteware	1	6	1	BS	Plate	Willow	M - LC19th	
4140	Whiteware	1	1	1	BS	Hollow ware	U/Dec	M - LC19th	
		504	12658	411					

Table 4 – Clay pipe

Context	B	S	M	Total	Sta.	Dec.	Date range	Description and measurements
1000	4	3 3	1	38		1	1840-1860	33 plain stem fragments, 5 with small areas of light green glaze/wax; 1 flat mouthpiece, with green glaze/wax; 4 bowl fragments. One bowl with grape vine decoration and long flat bottomed spur; one bowl fragment with very slim pointed spur.
1002	1	7		8			18/19 C	Plain stem fragments, one with slag like material adhering to it. 1 small bowl fragment, thick and plain.
2000		3	1	4			18/19 C	Plain stem fragments; 1 mouthpiece with green wax.
2005		5		5			18/19 C	Plain stem fragments.
2015		2		2			18/19 C	Plain stem fragments.
3000		5		5			18/19 C	Plain stem fragments.
3015	1			1			1840 - 1860	Plain bowl fragment with wide and short flat bottomed stem. There is a marked step in the two halves of the pipe, which indicates that the two halves of the mould did not fit together properly.
4058		1		1			18/19 C	Plain stem fragment.
4063		1		1			18/19 C	Plain stem fragment, poor condition.
4140		2		2			18/19 C	Plain stem fragments.
4117		2		2			18/19 C	Plain stem fragments.
Totals	6	6 1	2	69	0	1		

The above table presents details of the clay tobacco pipes recovered from the site. This table is arranged in context number order. In each case the number of bowls (**B**), stems (**S**), and mouthpieces (**M**) is given followed by the total number of fragments from each context. The date range is then given. Details of decorated (**Dec.**) fragments are then given, followed by general comments for each context.

Table 5 – Wood and leather

Material	Context	Context information	No. frags	Date	Description and measurements
Leather	4063	Cellar backfill	2	19/20 C	Leather strap fragments, part of has been fed through a corroded square copper alloy buckle.
Leather	4068	Demolition backfill	1	-	57mm quadrilateral leather offcut, thickness 5mm.
Wood	3000	Overburden	1	19/20 C	150mm wooden (paint brush type) handle, probably lacquered.
Wood	3015	Made ground	1	-	Small square fragment wood, 40x20mm, looks to be broken off larger object.
Wood	4063	Cellar backfill	1	19/20 C	Handle fragment, from shovel or similar. Copper alloy casing around end.
		TOTAL	6		

Table 6 - Shell

Site code	Context	Context info.	No. frags	Date	Description
1040b	1000	Rubble overburden	6	-	1 limpet shell, 1 cockle, 4 oyster shell fragments.
1040b	1002	Made ground	2	-	1 cockle, 1 mussel.
1040b	2000	Rubble overburden	1	-	Oyster shell fragment.
1040b	2005	Made ground	3	-	Small oyster shell fragments.
1040b	3000	Rubble overburden	8	19 / 20 C	5 fragments of hard white mother-of-pearl type shell, with sawn flat edges. 2 white mother-of-pearl type fragments with distinct semi-circular cut outs visible – button making debris. 1 fragment oyster.
1040c	4061	Demolition fill of [4005]	1	-	1 oyster shell.
1040c	4063	Demolition fill of [4008]	3	19 / 20 C	1 oyster shell; 2 fragments of worked yellowish mother-of-pearl type, with circular-sawn edges. 1 of these fragments has distinct semi-circular cut outs visible – button making debris.
1040c	4140	Made ground	1	-	1 oyster shell.
1040c	4117	Made ground	1	-	1 oyster shell.
		TOTAL	26		

Table 7 – Glass

Context	# Frags	Bottles			Window		Vessel	Other	U/D	Etching, embossing, labels	Complete bottle dimensions			Notes
		complete bottles	# base fragments	# body fragments	# neck fragments	# fragments >5mm	# fragments <5mm	# vessel fragments	# other fragments		# undiagnostic fragments	Height	Width/circumference of base	
1000	2						2						19-20	Clear window
1000	1			1						...YW...'			19-20	Thick green fragment, possible Codd or soda bottle.
2005	4			4									19-20	Undiagnostic olive green fragments.
3000	1	1								FCC / 1 / A80' on base	75	65	20	Clear round jar, screw threaded with seams to top.
3000	1				1								20	Brown beer bottle neck, seams to top.
3000	1			1									19-20	Undiagnostic AG body fragment.
3014	1			1									19-20	Undiagnostic green body fragment.
3015	1			1									19-20	Undiagnostic AG body fragment.
4058	1	1								TATE'S / GOLDEN / SYRUP / REGD NO 304701' around base	95	75 x 75	20	Octagonal/square jar, round screw thread neck. Two vertical seams to top. Remains of metal lid around neck. Clear.

Context	# Frags	Bottles				Window		Vessel	Other	U/D	Etching, embossing, labels	Complete bottle dimensions			Notes
		complete bottles	# base fragments	# body fragments	# neck fragments	# fragments >5mm	# fragments <5mm	# vessel fragments	# other fragments	# undiagnostic fragments		Height	Width/circumference of base	Date	
4061	1	1									Embossed geometric decoration and 'SOLE PROPERTY OF LAWS' around shoulder/neck. 'M339' on base. In situ rubber stopper with beaded decoration.	180	75	19-20	Clear pop/soda/liquor bottle? Two vertical seams and one around internally threaded neck.
4061	1	1									C.T.C / QI822 / 2	170	42	19-20	Small brown bottle, possibly beer or other alcohol. Vertical seams to top.
4061	1	1										185	65x35	19-20	Clear oval medicine bottle, with remains of a viscous yellow fluid inside. Vertical seams, corroded metal lid.
4061	1	1									BOOTS / THE CHEMISTS' on side, '2 A / 33' on base	110	40x20	19-20	Small clear square medicine bottle, with Boots logo on front and in situ cork. Seams to top.

Context	# Frags	Bottles				Window		Vessel	Other	U/D	Etching, embossing, labels	Complete bottle dimensions			Notes
		complete bottles	# base fragments	# body fragments	# neck fragments	# fragments >5mm	# fragments <5mm	# vessel fragments	# other fragments	# undiagnostic fragments		Height	Width/circumference of base	Date	
4063	1	1									TATE'S / GOLDEN / SYRUP / REGD NO 304701' around base	95	75 x 75	20	Octagonal/square jar, round screw thread neck. Two vertical seams to top. Remains of metal lid around neck. Clear.
4063	1								1				15	19-20	Clear marble.
4063	1	1										110	50	20	Clear round bottle, with screw thread. In situ cork, and bottle contains a black liquid. Liquid smells medicinal.
4074	1	1									HORLICKS' around base four times. 'R' in circle on base.	200	110	19-20	Large jar, screw threaded neck. Base and shoulder has 'crazed' decoration. Two vertical seams to top. Clear.
4074	1	1									TRADEMARK / BRYLCREEM / UKDSCN REGD' on base	90	50 x 40	20	Jar 'heart shaped' with rounded shoulders and screw threaded neck. Two horizontal indents on either side (finger grips?) and vertical seams. Clear.

Context	# Frags	Bottles				Window		Vessel	Other	U/D	Etching, embossing, labels	Complete bottle dimensions			Notes
		complete bottles	# base fragments	# body fragments	# neck fragments	# fragments >5mm	# fragments <5mm	# vessel fragments	# other fragments	# undiagnostic fragments		Height	Width/circumference of base	Date	
4074	1	1										65	45	19-20	Small AG ink well or similar. Poorly made.
4074	1	1									TABLESPOONS' on front, with horizontal measure lines.	180	65 x 45	19-20	Clear medicine bottle, square, vertical seams.
4074	1	1									Remains of paper label adhering, some words can be made out "...only...brush...should...stiff...clean... Lacquer... ture cream.. For Household..."	100	45	19-20	Cylindrical clear bottle with seams and screw threaded top. Remains of corroded ferrous top. Contents are silver material with solvent smell.
4074	1	1									LA PARSONS & SONS LTD / GREAT BRITAIN / BURRY PORT / 7 / REGD NO. / 894387 / UCB / S" on base	80	110	20	Large squat trapezoid jar, fluted or billowing decoration on sides. Screw thread top. Side seams. Probably food vessels (Parsons Pickles, on internet)

Context	# Frags	Bottles				Window		Vessel	Other	U/D	Etching, embossing, labels	Complete bottle dimensions			Notes
		complete bottles	# base fragments	# body fragments	# neck fragments	# fragments >5mm	# fragments <5mm	# vessel fragments	# other fragments	# undiagnostic fragments		Height	Width/circumference of base	Date	
4074	1	1									4364' on base	300	100	20	Large brown bottle, possibly beer or liquor. In situ cork. Shouldered bottle with tear drop shaped neck. Looks like it's emulating an older style of bottle.
4074	1	1									P / 4' on base with spoked wheel logo.	230	65	20	Screw threaded clear round bottle, with remains of red painted metal top. Looks like a milk bottle.
4074	1	1									4700' on base	300	70	20	Green wine bottle type, side seams to top and in situ cork.
4074	1	1									A MELRY PRODUCT' around shoulder and '82 / C / 7' on base	210	70	20	Brown round Pmedicine bottle with green plastic screw top. Modern looking.
4074	1								1					20	Fragment of opaque white glass, probably from lamp shade.
4140	1			1										19-20	Undiagnostic AB fragment.

Table 8 – Ceramic building material

Site	Context	Context info.	No. frags	Date	Description and measurements
1040b	2000	Rubble overburden	8	20 th C	4 plain white glazed tile fragments, 1 white tile fragment with blue, yellow and grey raised floral decoration, 1 fragment tile with pink/grey floral decoration, 1 fragment tile with green/grey floral decoration; all kitchen / bathroom type. 1 small fragment of fine white plaster.
1040b	2000	Rubble overburden	8	19 th / 20 th C	Fragments of painted wall plaster, one larger piece with blue paint visible and soft white/grey mortar. Six fragments of black cement with white plaster and possible wallpaper remnants adhering. Possibly a floral design.
1040b	2005	Made ground	1	20 th C	Small fragment white tile with raised pink and grey floral decoration; kitchen/bathroom type.
1040b	3000	Rubble overburden	7	20 th C	5 kitchen/bathroom type tile fragments; 2 white, 1 yellow, 1 buff, 1 dark brown and ribbed. 1 coarse fabric cream coloured pipe fragment; 1 fragment orange pan-tile or similar.
1040c	4062	Demolition fill of [4007]	1	20 th C	Yellow glazed bathroom/kitchen tile, measures 78mm x 67mm.
1040c	4063	Demolition fill of [4008]	1	20 th C	'L' shaped border tile, mottled cream and green glaze with a curvilinear raised decoration. Hard concrete mortar adhering to back. Measures 155mm x 50mm x 50mm.
		TOTAL	26		

Table 9 – Crucible fragments and other refractory materials

Context	Quantity	Description
1000	6	5 fragments of used steelmaking crucible. 1 possible fragment of used brass founding crucible.
1002	1	Fragment of used steelmaking crucible.
3000	1	Small fragment of refractory stone with partially slagged surface (approx 56g)
4071	2	1 rim fragment from possible brass founding crucible. (diameter of rim estimated at approx 15cm). 1 fragment from body of used steelmaking crucible.
4074*	1	Base fragment of possible brass founding crucible.

Table 10 – Possible metalliferous process residues

Context	Quantity	Description
1000	5	2 pieces of possible lime rich bulk iron/steelmaking slag (approx. 19g) 2 pieces probable fuel ash slag (approx 128g) 1 piece of undiagnostic conglomerate (approx 600g)
3015	1	Undiagnostic/possible fuel ash slag (approx 34g)

Table 11 – Ferrous metals (* indicates object to retain)

Context	Context info.	No. frags	Date	Description and measurements
1000	Overburden	1	-	Highly corroded shelf bracket, 170mm.
2000	Overburden	1	19 th C	Head of 'file cutters' hammer, Shaft set at about 60° to head, weight 425g (15oz).*
3000	Overburden	21	20 th C	Three complete rubber wheels, one with ferrous spokes and one with complete dished cover. Diameters 200mm / 180mm and / 180mm. Probably pram wheels from at least two different prams. Tyres have 'CUSHION TYRE' and 'HUGHES BUOYANT TYRE'. Three rim fragments and part of dished wheel cover from pram wheel. One small hard rubber wheel with ferrous centre from a child's toy, diameter 100mm. Two fragments from possible grate cover. Three short lengths of oval linked chain; links 40mm (1.5") long. Part of small three tine garden fork, hand tool. Three iron nails, 60mm (2.5"). Three iron screws, for flat head screwdriver. One key, 90mm. One used stone masons chisel, 130mm (5").
4058	Cellar backfill	2	1945 onwards	Corroded scaffold 'coupler'; mild (low carbon) steel fire grate, poor quality.
4059	Cellar backfill	1	1930s onwards	Stainless steel straight bladed 100mm (4") table knife with 'egg waterloo' bolster and melted xylonite handle, 'FIRTH STAINLESS' visible on blade.
4061	Cellar backfill	5	20 th C	One carving knife blade, stainless steel and mirror polished. Probably 1940/50s in date. Two 400mm iron pins, could be pokers or similar. One 380cm 'butchers steel' knife sharpener. One large ferrous item with moving parts, probably part of a 'Yorkshire range', used to open and close flue system (the dampers).
4062	Cellar backfill	1	20 th C	340x220mm metal grate cover with series of unevenly placed holes, probably made from reused steel sheet.
4063	Cellar backfill	2	20 th C	1 corroded gas burner (portable) and one scimitar pattern stainless steel tea knife with 100mm (4") blade, with xylonite 'candle end' handle and 'egg waterloo' bolster.
4072 (SF 1)	Natural	1	19 th C	Large nail, 130mm (5") length. Round shaft, flat round head.*
4072 (SF 2)	Natural	2	19 th C	Two heavily corroded ferrous objects, could be nails or bolts. *
4072 (SF 4)	Natural	1	19 th C	Large nail, 160mm (6") length. Round shaft, flat round head.*
4072 (SF 5)	Natural	1	-	Ceiling hook, 110mm.*
4072 (SF 6)	Natural	1	-	Nail, round shaft, flat round head, 95mm (4").*
4074	Cellar backfill	1	Late 19 th / 20 th C	Flat cast iron panel, decorated. Part of bedroom fireplace surround (vertical piece). 140 x 350mm.
	TOTAL	41		

Table 12 – Non-ferrous metals (* indicates object to retain)

Context	Context information	No. frags	Date	Description and measurements
1000	Overburden	1	20 th C	Short length of non-ferrous wire.
2000	Overburden	1	19/20 th C	Flat flange with three small holes around larger central one for attaching something to wall etc, possibly brass.
3000	Overburden	2	19/20 th C	1 lead strip with small hole at one end, roughly 120x25mm. Slate tile 'hook'. 1 P copper alloy semi-circular P bracket.
4062	Cellar backfill	3	19/20 th C	2 hat and coat hooks; one possibly copper alloy, the other chrome plated. 1 square copper object, roughly 150x140mm, with circular upper part and centrally placed wick. Part of portable workers lamp or road lamp.
4063	Cellar backfill	1	19/20 th C	Heavy brass latch for sash window. 1 copper alloy roofing nail, square shaft, round and flat head.
4068	Demolition fill between walls [4042] and [4043]	4	1930 onwards	Large folded tin sign, measures approximately 69 x 48cm. Advertisement for boot polish, reads 'THERE'S REAL COMFORT / POLISHED WITH / CHERRY BLOSSOM / BOOT POLISH / MADE AND PRINTED AND PRODUCED IN THE CHERRY BLOSSOM FACTORY LONDON' and a central illustration of sleeping kittens in boots. 1 nickel-silver tea spoon with 'EPNSA / SHEFFIELD...' marked on rear. Around 105mm (4") long. 1 copper alloy nail, square shaft, round and flat head. Flat strip of copper alloy, with hole at one end, approximately 120x25mm, slate tile 'hook'.
4072 (SF 2)	Natural	9	19 th C	9 copper alloy nails, all square shaft and flat round head. Handforged. Approx. 64mm (2.5") long.*
4072 (SF 3)	Natural	2	19 th C	2 copper alloy nails, square shaft and flat round head. Handforged. Approx. 64mm (2.5") long.*
4074	Cellar backfill	1	20 th C	Heavily corroded nickel-silver egg spoon, Chippendale pattern. Around 110mm long.
Unstrat	Unstratified	1	1838 - 1860	Coin, 29mm in diameter. Faint portrait of 'young head' of Queen visible on obverse. Size and portrait imply this is a bronze issue half-penny, dating between 1838–1860.*
	TOTAL	26		

Table 13 – Animal bone

Site code	Context	Context info.	No. frags	Date range	Description
1040 b	1000	Overburden	2	-	1 small miscellaneous fragment; 1 small mammal rib fragment.
1040 b	2000	Overburden	2	-	2 large/medium mammal rib fragments, one butchered (chopped) at both ends.
1040 b	2015	Redeposited clay	1	-	1 ?sheep phalange, unworked.
1040 b	3000	Overburden	1	-	1 medium mammal rib fragment, butchered (chopped) at one end.
1040 b	1000	Overburden	1	Late 19 th – early 20 th C	Worked bone off-cut, triangular in section. Saw marks on two sides from circular saw.
1040 c	4074	Backfill of cellar [4073]	2	19 th – early 20 th C	Worked bone or ivory knife handle, 75mm in length with waterleaf decoration. Ferrous corrosion around tang hole. Probably tea knife from cutlery tea set. Worked bone crochet hook, 93mm.
		TOTAL	9		

Table 14 – Miscellaneous artefacts

Material	Context	Context information	No. frags	Date	Description and measurements
PMetal	3000	Overburden	2	-	Very small fragments of ferrous looking metal or residue.
Ceramic	3000	Overburden	1	19-20 th C	Small ceramic object, cylindrical and broken at one end, hollow. 47mm in length. Internally lined with non-ferrous metal. Possibly a light fitting or similar component.
Plastic	3000	Overburden	3	20 th C	Red plastic arrow with round hole in centre, likely to be a game part or part of a compass or clock. 2 round clear plastic objects, probably stoppers from small plastic vessels (paint pots or similar).
Plastic	3000	Overburden	1	20 th C	Orange/red coloured drawer or cupboard handle, could be bakelite or similar. Painted pale green. Measures 30x24x26mm.
Plastic	3000	Overburden	1	20 th C	Length of folded white plastic coated Pcopper wire.
Plastic	4063	Cellar backfill	7	20 th C	5 pieces of a bakelite or early plastic helmet, no liner, diameter 310mm. Likely to be a helmet made by a company called 'Plasfort' during WWII for civilian use. 2 brown bakelite door handles, round, diameter 55mm. 1 cream/white bakelite and ceramic light switch, with 'MADE IN ENGLAND / CRABTREE' and serial number on reverse.
Plastic	4074	Cellar backfill	1	P20 th C	Thin folded sheet of cream coloured synthetic material, possibly vinyl or similar. Faint cross hatch design on one side. Wallpaper or table cloth?
Plastic	4074	Cellar backfill	6	Mid-20 th C	1 green nylon toothbrush, with 'WINB... NYLON/ MADE IN ENGLAND/ HARD' on handle. Post 1938. Bakelite light switch, with ceramic base, reads 'MADE IN ENGLAND / CRABTREE' on rear, with serial number. 3 pieces grey plastic from model 'air fix' type kit, parts of a 'Churchill' tank. 1 red plastic bottle top, with 'Q.C' embossed. Probably from sherry bottle.
Stone	3000	Overburden	1	-	Small fragment grey slate.
		TOTAL	23		

