

The Fired Clay

Patrick Marsden

Introduction

4639g of fired clay was recovered from the excavations. This was mainly in a fragmentary and abraded state and most pieces were undiagnostic. Table X summarises the information recorded on the fired clay.

The Fabrics

Three fabrics were identified. These are as follows:

Fabric 1 : clay with few inclusions, except very sparse manganese concretions up to 3mm in size.

Fabric 2 : sandy and sparse manganese concretions up to 3mm.

Fabric 3 : sandy with sparse manganese concretions up to 3mm and quartz and quartzite pebbles up to 10mm.

Given the inclusions present a local origin would seem likely for the clays used. The inclusions themselves appear to be naturally occurring, as opposed to being crushed up and deliberately added as temper, as is the case with the at least some of the pottery fabrics from Willington (see Whitbread and Johnson's 'Petrological Report' and Ann Woodward's 'Discussion of petrology').

The ovens

Two features were interpreted as 'ovens' and produced significant amounts of fired clay (Group 2516 1514g and Group 2530 1343g), which may have been part of clay structures. Group 2516 produced 5 fragments with surfaces and Group 2530 20 fragments, which may be the outer or inner faces of the 'oven' walls.

Other Features

Burnt Mound I *tank* C1483 produced 5 fragments of fired clay with surfaces possibly from an oven plate, as one fragment displays parts of two perforations. Very few holes and possible wattle impressions were also present on fired clay in other contexts, which otherwise was fragmentary and undiagnostic (see Table 1).

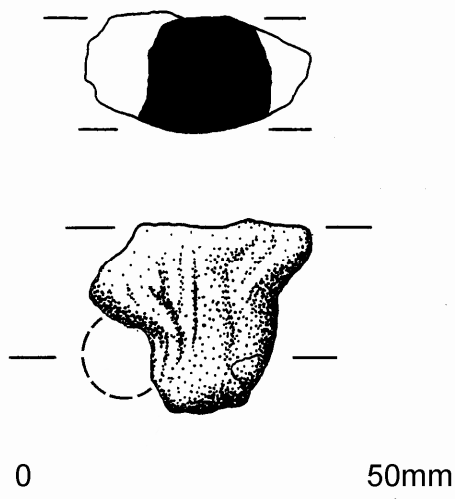


Figure 1: Fragment of possible oven plate from (1688, C1483) Burnt Mound I (Group 2550/3).

Group	Context no.	Small find no.	Sample no.	Total weight (g)	Fabric 1	Fabric 2	Fabric 3	Comments
0802	388			97	97			2 fragments with surfaces.
0805	64		4	4	4			
812	524			4		4		
2505		511		6	6			
2505	1287			20			20	
2508	1501	427		3		3		
2508		408		2		2		
2509	1428		120	70			70	
2511	1044			55		55		2 fragments with surfaces, 1 of these with possibly edge of hole.
2511	1488			400		400		1 fragment with surfaces.
2511	1489			15		15		
2511	1489		72	390	390			1 fragment with a surface.
2511	1512			6			6	
2511	1554			165		165		1 fragment with surface.
2514	1086			95			95	
2514	1086		116	35			35	
2514	1088			30		30		
2516	1089			57		57		
2516	3069		175	733	733			
2516	3069			227	207		20	
2516	3070		176	391			391	3 fragments with surfaces.

Group	Context no.	Small find no.	Sample no.	Total weight (g)	Fabric 1	Fabric 2	Fabric 3	Comments
2516	3093		177	13			13	
2516	3094		178	93			93	2 fragments with surfaces
2527	1021		74	70	70			
2527	1558			4		4		2 fragments with surfaces.
2530	1073		146	131	15	116		2 fragments of Fabric 1 with surfaces.
2530	2042			32	6	26		1 fragment of Fabric 1 and 2 fragments of Fabric 2 with surfaces.
2530	2064		145	14	4	10		
2530	2068		147	1152	1152			14 fragments with surfaces.
2530	2076		149	14		14		1 fragment in Fabric 2 with surface.
2532	217			36		36		2 fragments with surfaces, 1 of these part of a hole/wattle impression.
2536	1889		121	12		12		
2537	1200			17			17	
2541	155			6			6	
2541	2004			24		9	15	All 3 fragments of Fabric 3 with surfaces, one possibly a wattle impression.
2543	134		16	8		8		
2543	154			7	7			
2550	1608	453		5		5		
2550		472		25			25	
2550	1487			3		3		
2550	1688			24		24		All 5 fragments have surfaces, 1 fragment has parts of two holes and could be part of an oven plate.
2550	1773			6		6		
2550	1799			4		4		
2550	1817			16		16		
2550	1863			6		6		
2550	1897		127	6			6	
2550	1980			17		17		
3100	2079	582		7		7		
3100	3107	590		5			5	
3100	3107	592		50			50	
3100	3103	594		20			20	
4501	212			7			7	
Total				4639	2691	1054	894	

Table 1: fired clay totals (including for Fabrics 1-3) and description of diagnostic fragments by group