

Archaeological Evaluation

Kilmagadwood, Perth and Kinross



Development site looking south (Loch Leven visible in background)



7th December 2012

Introduction

This programme of archaeological works was carried out for Rhubarb Blue Ltd to satisfy the outstanding archaeological condition on the planning consent for this development, as noted by Perth and Kinross Heritage Trust in the Terms of Reference to Planning Application 10/00134/FLL, dated 11th January 2012. This evaluation was carried out by the author on Thursday 6th December 2012 (site code KGW01); weather conditions were wet and windy with occasional snow showers.

Archaeological Background (Illus 1 and 2)

The proposed development is located in an area of archaeological potential. A prehistoric cinerary urn was discovered in the 1940's in the field adjacent to the proposed development (Stevenson 1948, 145-6). There are also several find spots of Bronze Age artefacts in the area surrounding the development site suggesting that there was significant Bronze Age activity in the area. It was felt that further prehistoric burials and associated archaeology may survive in the development area.

Site Evaluation (Illus 3 and 4)

Nine trenches were opened across the planned footprints of the two new houses and their associated road works.

Trench 1 (Illus 5 and 6)

This trench was aligned north East to South West and was 21m long by 1.8m wide. At its Northern end 0.30m of brown silty clay overlay yellow sand (natural). At its Southern end 0.20m of brown silty clay overlay yellow sand (natural). Deep plough scars were visible at the northern end of the trench. Nothing of archaeological interest was located.

Trench 2 (Illus 7)

This trench was aligned north North East to South South West and was 21m long by 1.8m wide. At its Northern end 0.35m of brown sandy clay overlay yellow sand (Natural). At its southern end 0.20m of brown sandy clay overlay yellow sand (natural). Nothing of archaeological interest was located.

Trench 3 (Illus 8 and 9)

This trench was aligned north west to south east and was 21m long by 1.8m wide. At its north western end 0.40m of brown sandy clay overlay a yellow sand (natural). At its south eastern end 0.50m of brown sandy clay overlay yellow brown sand (natural). A large glacial erratic boulder was located at the north western end of this trench. Nothing of archaeological interest was located.

Trench 4 (Illus 10 and 11)

This trench was aligned north north west to south south east and was 21m long by 1.8m wide. At its north western end 0.40m of brown sandy clay overlay a yellow sand (natural). In the middle of this trench a deeper deposit of brown silty clay and occasional stone was encountered to a depth of 0.65m and at its south eastern end 0.40m of brown sandy clay overlay a yellow sand (natural). Nothing of archaeological interest was located.

Trench 5 (Illus 12 to 18)

This trench was aligned north north east to south south west and was 20m long by 1.8m wide. At its northern end 0.50m of brown sandy clay overlay yellow brown sand (natural). Four cremation urns of probable Bronze Age date were located at 10.5m, 11.9m, 12.9m and 13.7m from the northern end of the trench. These were all sealed by 0.30m of brown sandy clay and had obviously been slightly damaged by the ploughing of the field. At the southern end of this trench 0.35m of brown sandy clay overlay yellow sand (natural).

Trench 6 (Illus 19)

This trench was aligned north west to south east and was 20m long by 1.8m wide. At its northern end 0.28m of brown sandy clay overlay a yellow sand (natural) and at its Southern end 0.30m of brown sandy clay overlay a yellow sand (natural). Nothing of archaeological interest was located.

Trench 7 (*Illus 20 and 21*)

This trench was aligned north west to south east and was 22m long by 1.8m wide. At its north western end 0.45m of brown sandy clay overlay a yellow sand (natural) and at its south eastern end 0.46m of brown sandy clay overlay a yellow sand (natural). 10.2m from the north west end of this trench a linear cut feature filled with redeposited natural sand and brown sandy clay was located. A sample trench across this feature revealed straight side edges to a depth of 0.50m, no finds were present and it is assumed that this is a modern feature possibly a former test pit.

Trench 8 (*Illus 22 and 23*)

This trench was aligned north north east to south south west and was 21m long by 1.8m wide. At its northern end 0.50m of brown sandy clay overlay a yellow brown sand (natural) and at its southern end 0.51m of brown sandy clay overlay a yellow brown sand (natural). 4m from the southern end of this trench a linear cut feature filled with redeposited natural sand was located. This feature contained no finds and is assumed to be another modern feature similar to the one described in Trench 7.

Trench 9 (*Illus 24*)

This trench was aligned north to south and was 22m long by 1.8m wide. At its northern end 0.40m of brown sandy clay overlay a yellow sand (natural) at its southern end 0.46m of brown sandy clay overlay a yellow brown sand (natural). Nothing of archaeological interest was located.

Conclusions

In 8 of the 9 trenches opened deposits of brown sandy clay (former ploughsoil) were encountered overlying a natural yellow or yellow brown sand. Nothing of archaeological interest was encountered. In trench 5 a line of four cremation urns were exposed lying 0.30m below modern ground level. The tops of these pots have already been ploughed away but some surviving ceramic is still visible, in at least three of them fragments of cremated bone were also visible. These four cremations are liable to date to the Bronze Age and are probably of a similar nature to the one located in the adjoining field in 1940. Prior to the backfilling of Trench 5 the four cremation urns were marked with soil filled plastic bags wrapped with yellow and black hazard tape (*Illus 25*).

Recommendations

The four cremation urns are worthy of preservation *in situ* depending on the proposed foundation design for the house that sits closest to them. If it is felt that it is not possible for them to be preserved *in situ* then they would need to be totally excavated and their contents analysed and dated. The final decision on the need and scale of any further work however rests with Perth and Kinross Heritage Trust.

Acknowledgements

The author would like to thank Athol Hoay the machine driver for his help with this evaluation.

Reference

Stevenson, R B K 1948 'An encrusted-urn burial at Scotlandwell, Kinross-shire', *Proc Soc Antiq Scot*, vol.80, 145-6

Illustration List

Illustration 1 Site Location (red circle) (based on Ordnance Survey map Crown Copyright 2012. All Rights Reserved. Licence number 100049628)

Illustration 2 Site location in relation to former cremation urn discovery to NW (plan as supplied by Perth and Kinross Heritage Trust)

Illustration 3 Location of evaluation trenches (based on supplied architects plan), house footprints marked as red dotted lines, access roads as blue lines. Five red dots in trench 5 indicate location of cremation urns. Scale 1:80

Illustration 4 General view of site showing location of Trench 1 and Trench 2 in process of excavation looking South

Illustration 5 Trench 1 fully excavated looking South showing natural sand

Illustration 6 Plough scars visible in natural sand at Northern end of Trench 1

Illustration 7 Trench 2 looking fully excavated looking South showing natural sand

Illustration 8 Trench 3 fully excavated looking North West showing natural sand

Illustration 9 Large glacial erratic boulder in Trench 3 at North Western end

Illustration 10 Trench 4 looking South East showing natural sand

Illustration 11 Trench 4 showing deep deposit of hill wash looking South East

Illustration 12 Trench 5 looking North cremation urns adjacent to plastic bag on section

Illustration 13 Plan of Trench 5 showing position of Cremation Urns 1 to 4 Scale 1:50

Illustration 14 Trench 5 looking North, four cremation urns marked with red arrows

Illustration 15 Trench 5 Cremation Urn 1 (white fleck is cremated human bone)

Illustration 16 Trench 5 Cremation Urn 2

Illustration 17 Trench 5 Cremation Urn 3 (very small vessel)

Illustration 18 Trench 5 Cremation Urn 4

Illustration 19 Trench 6 looking East showing natural sand

Illustration 20 Trench 7 looking South West showing natural sand, linear feature visible by ranging rod

Illustration 21 Trench 7 linear feature half sectioned looking South West, modern test pit?

Illustration 22 Trench 8 looking South showing natural sand

Illustration 23 Trench 8 looking West, linear feature in natural sand (modern test trench?)

Illustration 24 Trench 9 looking North showing natural sand

Illustration 25 Trench 5 looking South prior to backfilling showing cremation urn positions marked with soil filled plastic bags and hazard warning tape

Discovery & Excavation in Scotland Entry

LOCAL AUTHORITY:	Perth and Kinross
PROJECT TITLE/SITE NAME:	Two new dwelling houses at Kilmagadwood
PROJECT CODE:	KGW01
PARISH:	Portmoak
NAME OF CONTRIBUTOR(S):	Derek Hall
NAME OF ORGANISATION:	Derek Hall, archaeologist and ceramic specialist
TYPE(S) OF PROJECT:	Archaeological Evaluation
NMRS NO(S):	NO10SE1
SITE/MONUMENT TYPE(S):	Cremation urns
SIGNIFICANT FINDS:	None
NGR (2 letters, 6 figures)	NO 18057 02119
START DATE	6th December 2012
END DATE	6th December 2012
PREVIOUS WORK (incl. <i>DES</i> ref.)	None
MAIN (NARRATIVE) DESCRIPTION: (May include information from other fields)	9 trenches representing a 5% sample of the proposed development area were opened. Eight of them located deposits of ploughsoil overlying natural sand and nothing of archaeological interest. Trench 5 however located a line of four cremation urns which had been slightly plough damaged, one of these vessels was much smaller than the others (10cm diameter) suggesting that they may represent a family group.
PROPOSED FUTURE WORK:	None
SPONSOR OR FUNDING BODY:	Rhubarb Blue Ltd
CAPTIONS FOR ILLUSTRS	N/A
ADDRESS OF MAIN CONTRIBUTOR:	34 Glenfarg Terrace, Perth, PH2 0AP
ARCHIVE LOCATION (intended)	NMRS
EMAIL ADDRESS:	Derek.hall1@blueyonder.co.uk

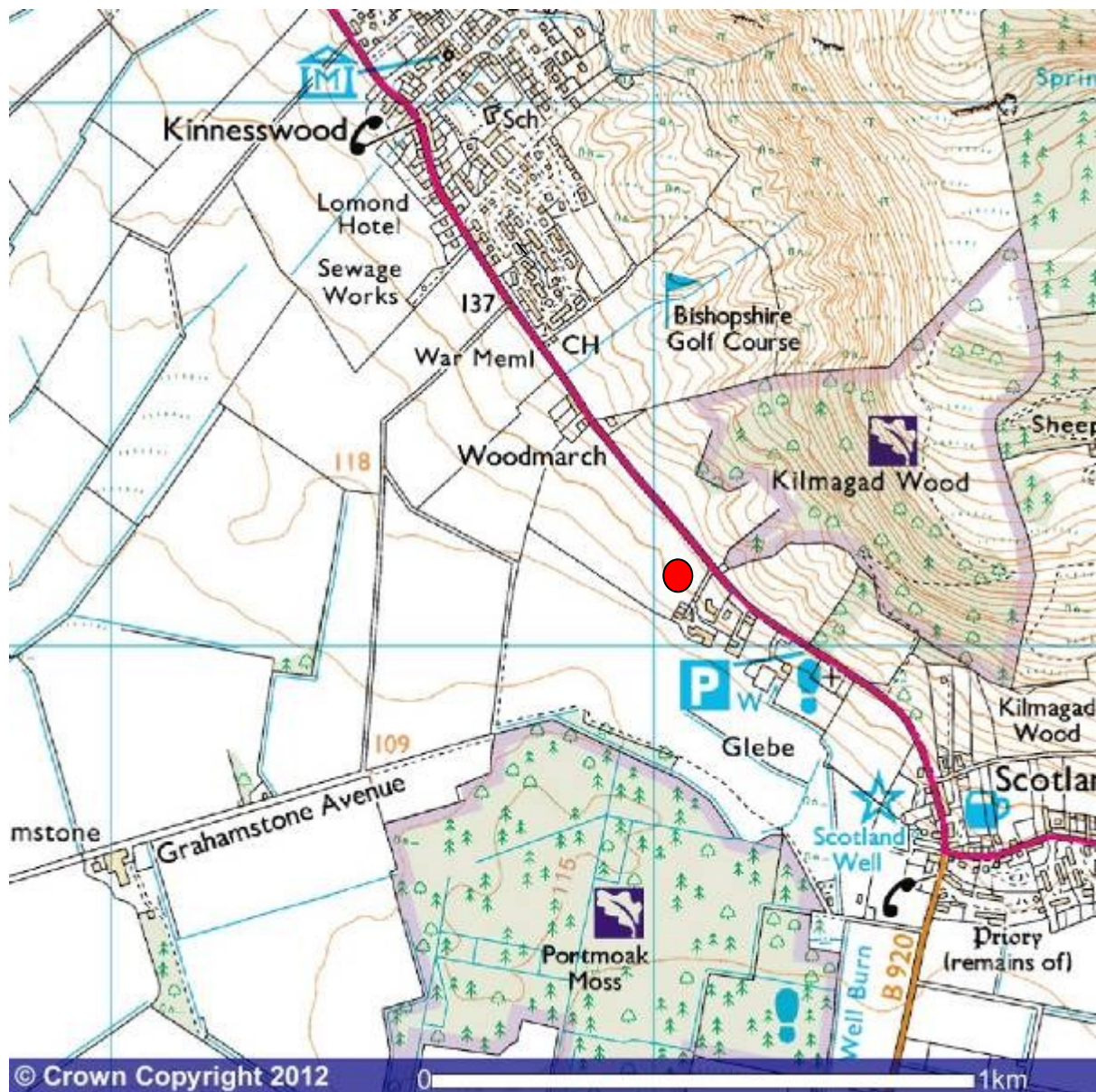


Illustration 1 Site Location (red circle) (based on Ordnance Survey map Crown Copyright 2012. All Rights Reserved. Licence number 100049628)

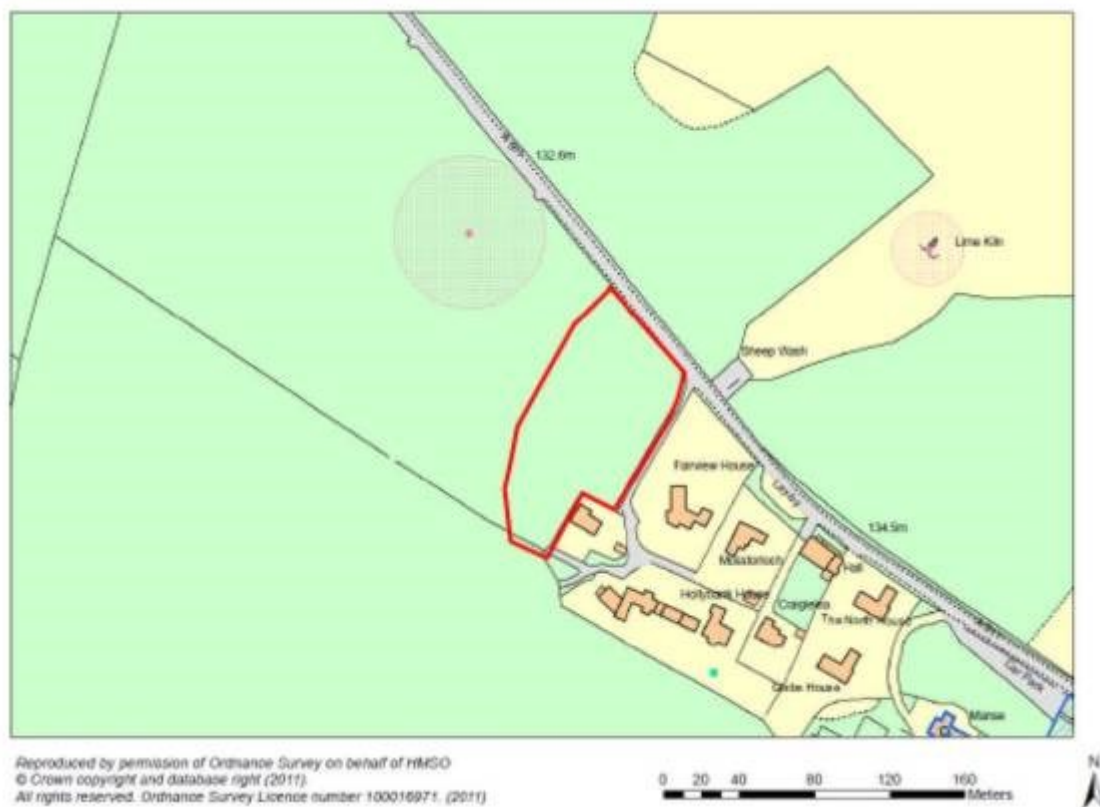


Illustration 2 Site location in relation to former cremation urn discovery to NW (plan as supplied by Perth and Kinross Heritage Trust)

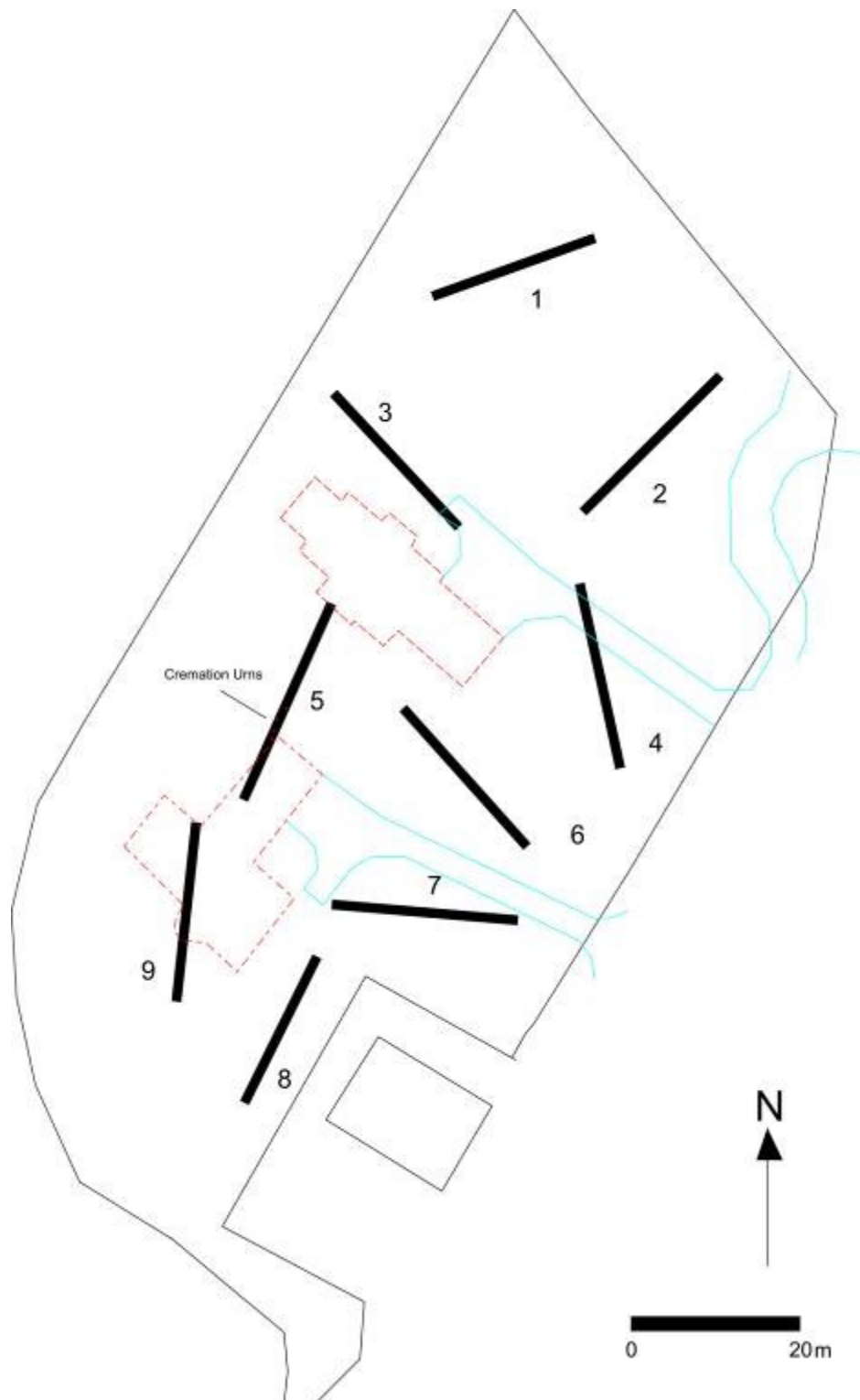


Illustration 3 Location of evaluation trenches (based on supplied architects plan), house footprints marked as red dotted lines, access roads as blue lines. Five red dots in trench 5 indicate location of cremation urns. Scale 1:80



Illustration 4 General view of site showing location of Trench 1 and Trench 2 in process of excavation looking south



Illustration 5 Trench 1 fully excavated looking South showing natural sand



Illustration 6 Plough scars visible in natural sand at Northern end of Trench 1



Illustration 7 Trench 2 looking fully excavated looking south showing natural sand



Illustration 8 Trench 3 fully excavated looking North West showing natural sand



Illustration 9 Large glacial erratic boulder in Trench 3 at North Western end



Illustration 10 Trench 4 looking South East showing natural sand



Illustration 11 Trench 4 showing deep deposit of hill wash looking South East



Illustration 12 Trench 5 looking North cremation urns adjacent to plastic bag on section

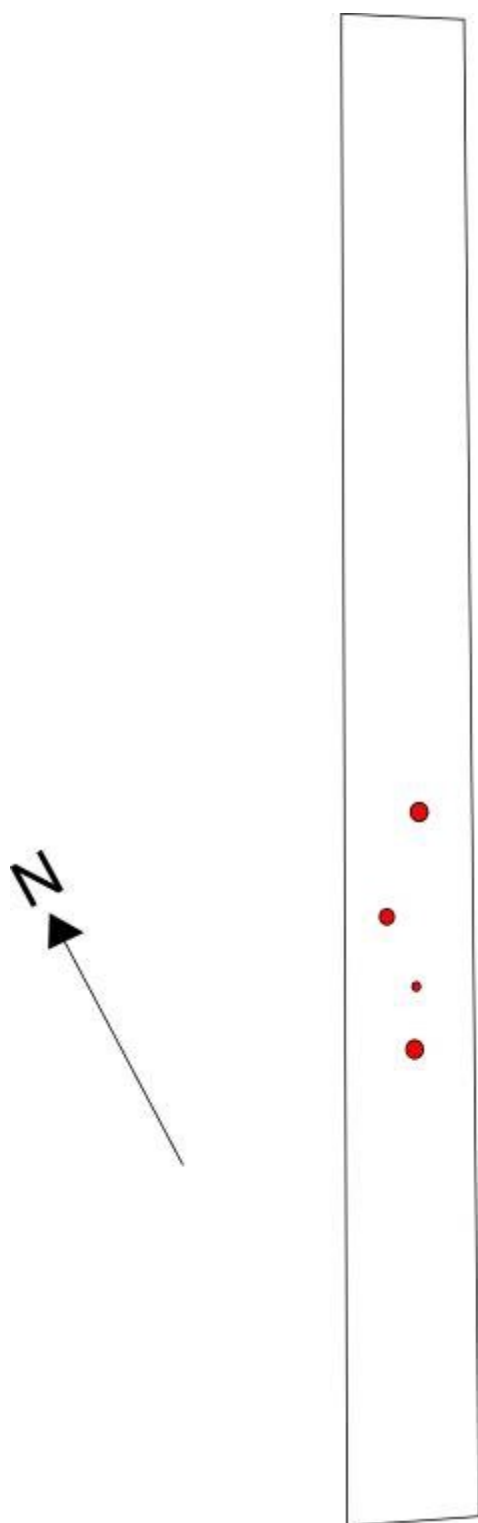


Illustration 13 Plan of Trench 5 showing position of Cremation Urns 1 to 4 Scale 1:50



Illustration 14 Trench 5 looking north, four cremation urns marked with red arrows



Illustration 15 Trench 5 Cremation Urn 1 (white fleck is cremated human bone)



Illustration 16 Trench 5 Cremation Urn 2



Illustration 17 Trench 5 Cremation Urn 3 (very small vessel)



Illustration 18 Trench 5 Cremation Urn 4



Illustration 19 Trench 6 looking East showing natural sand



Illustration 20 Trench 7 looking South West showing natural sand, linear feature visible by ranging rod



Illustration 21 Trench 7 linear feature half sectioned looking South West, modern test pit?



Illustration 22 Trench 8 looking south showing natural sand



Illustration 23 Trench 8 looking west, linear feature in natural sand (modern test trench?)



Illustration 24 Trench 9 looking North showing natural sand



Illustration 25 Trench 5 looking South prior to backfilling showing cremation urn positions marked with soil filled plastic bags and hazard warning tape