

1	Wetherby	26	Methley	51	Marr
2	Thorpe Arch	27	Castleford	52	West Moor Park
3	Collingham	28	Ferrybridge	53	Barnburgh
4	Boston Spa	29	Whitwood	54	Baby Carr
5	Hayton	30	Roall Manor Farm	55	Potteric Carr
6	Newton Kyme	31	Normanton	56	Cadeby
7	Dalton Parlours	32	Pontefract	57	Roman Ridge (River Don)
8	Tadcaster	33	Darrington	58	Rossington
9	Bramham	34	Castle Hill	59	Edlington Wood
10	Thorne	35	Kirk Smeaton	60	Hesley Hall
11	Lead	36	Thorpe Audlin	61	Ravenfield
12	Aberford	37	Went Hill	62	Stainton
13	Aberford Dykes	38	Norton	63	Bawtry
14	Barwick-in-Elmet	39	Badsworth	64	Scaftworth
15	Roman Ridge (Hook Moor)	40	Sutton	65	Thrybergh
16	Hook Moor	41	Sutton Common	66	Maltby
17	Micklefield	42	Burghwallis	67	Templeborough
18	Colton	43	South Elmsall	68	Wincobank
19	Garforth	44	South Kirkby	69	Carlton-in-Lindrick
20	Swillington Common	45	Barnby Dun	70	Letwell
21	Grim's Ditch	46	Hatfield	71	Littleborough
22	Ledston	47	Adwick-le-Street	72	Babworth
23	Rothwell	48	Long Sandall	73	Elksley
24	Slack	49	Edenthorpe	74	Scratta Wood
25	Burton Salmon	50	Hickleton		

12	Aberford	28	Ferrybridge	57	Roman Ridge (River Don)
13	Aberford Dykes	19	Garforth	15	Roman Ridge (Hook Moor)
47	Adwick-le-Street	21	Grim's Ditch	58	Rossington
72	Babworth	46	Hatfield	23	Rothwell
39	Badsworth	5	Hayton	64	Scaftworth
54	Baby Carr	60	Hesley Hall	74	Scratta Wood
53	Barnburgh	50	Hickleton	24	Slack
45	Barnby Dun	16	Hook Moor	43	South Elmsall
14	Barwick-in-Elmet	35	Kirk Smeaton	44	South Kirkby
63	Bawtry	11	Lead	62	Stainton
4	Boston Spa	22	Ledston	40	Sutton
9	Bramham	70	Letwell	41	Sutton Common
42	Burghwallis	71	Littleborough	20	Swillington Common
25	Burton Salmon	48	Long Sandall	8	Tadcaster
56	Cadeby	66	Maltby	67	Templeborough
69	Carlton-in-Lindrick	51	Marr	10	Thorne
34	Castle Hill	26	Methley	2	Thorpe Arch
27	Castleford	17	Micklefield	36	Thorpe Audlin
3	Collingham	6	Newton Kyme	65	Thrybergh
18	Colton	31	Normanton	37	Went Hill
7	Dalton Parlours	38	Norton	52	West Moor Park
33	Darrington	32	Pontefract	1	Wetherby
49	Edenthorpe	55	Potteric Carr	29	Whitwood
59	Edlington Wood	61	Ravenfield	68	Wincobank
73	Elksley	30	Roall Manor Farm		

Fig. 8.0. Location plan of sites mentioned in the text

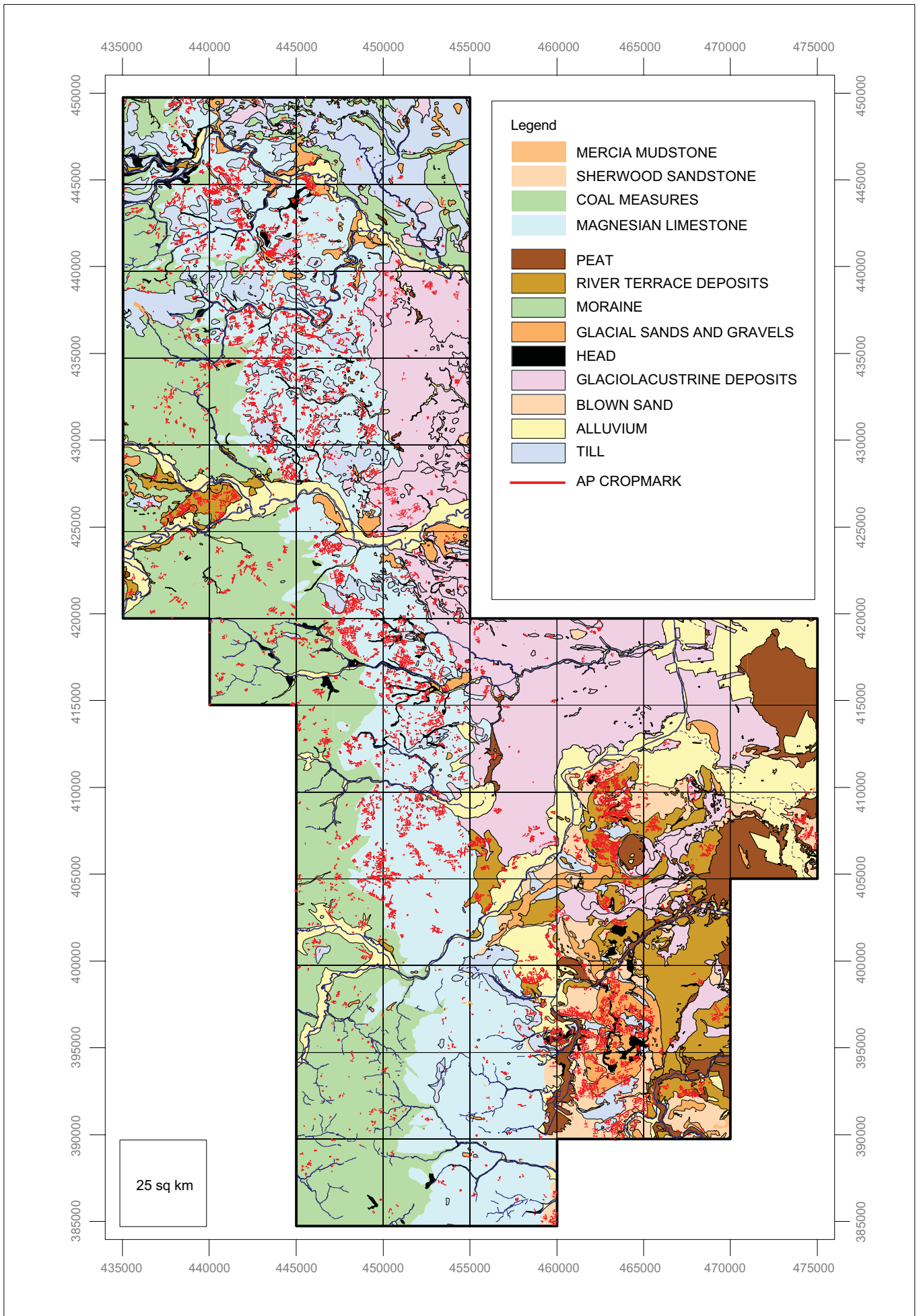


Fig. 8.0.1. Study area showing cropmark evidence over geology

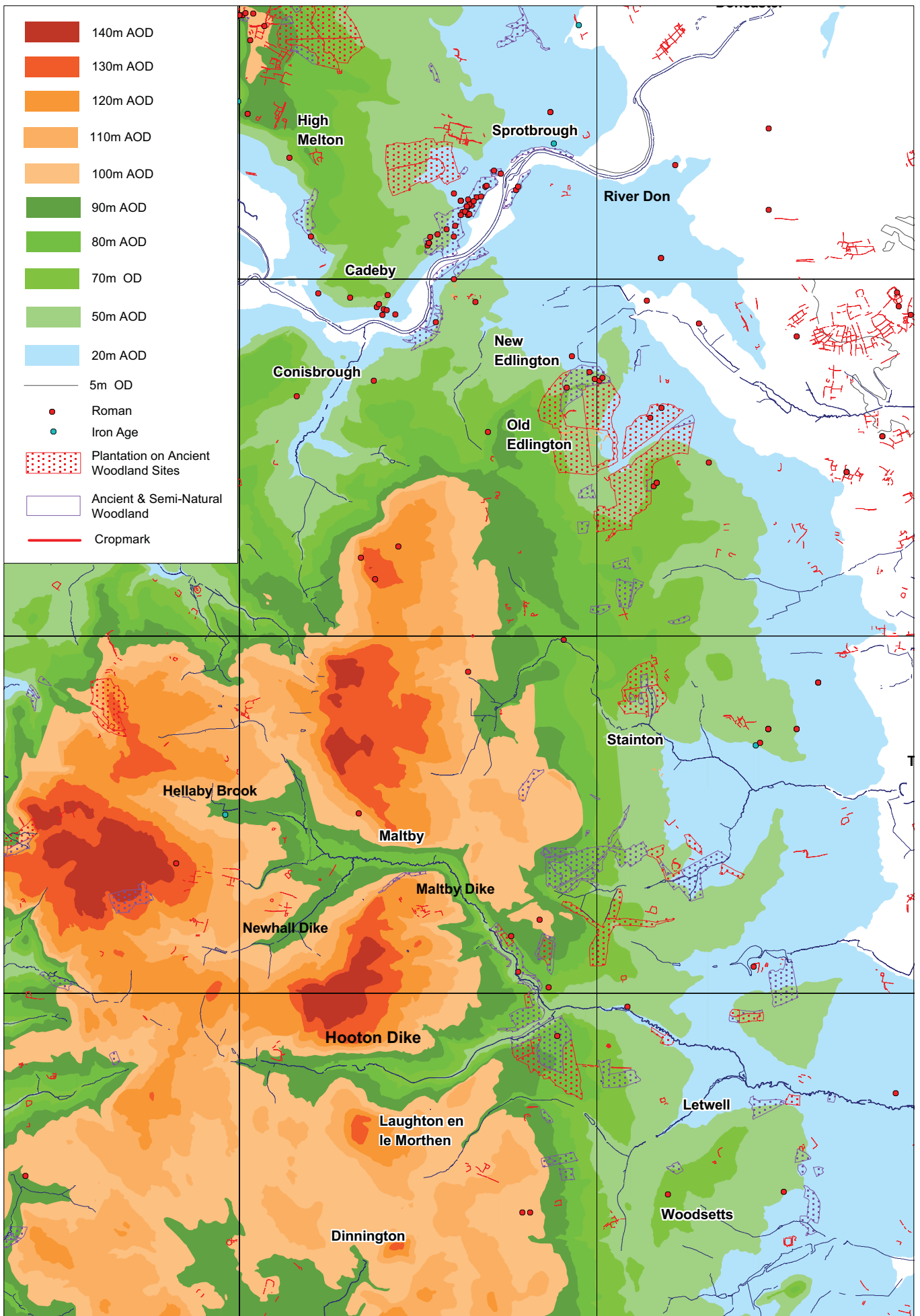


Figure 8.0.2. Study area south of the River Don (1: 85 000)

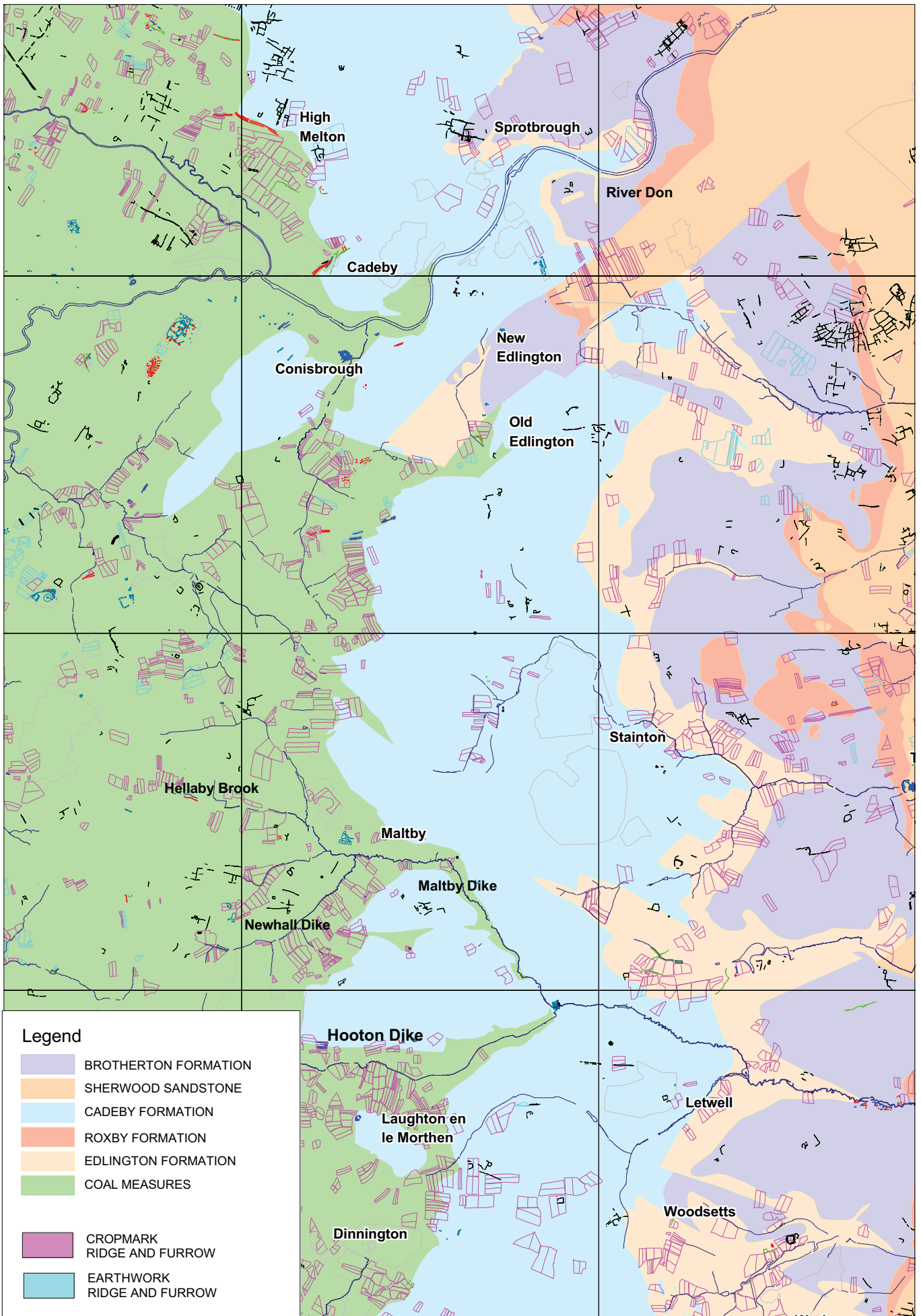


Fig. 8.0.3. Study area south of the River Don showing ridge and furrow (1: 85 000)

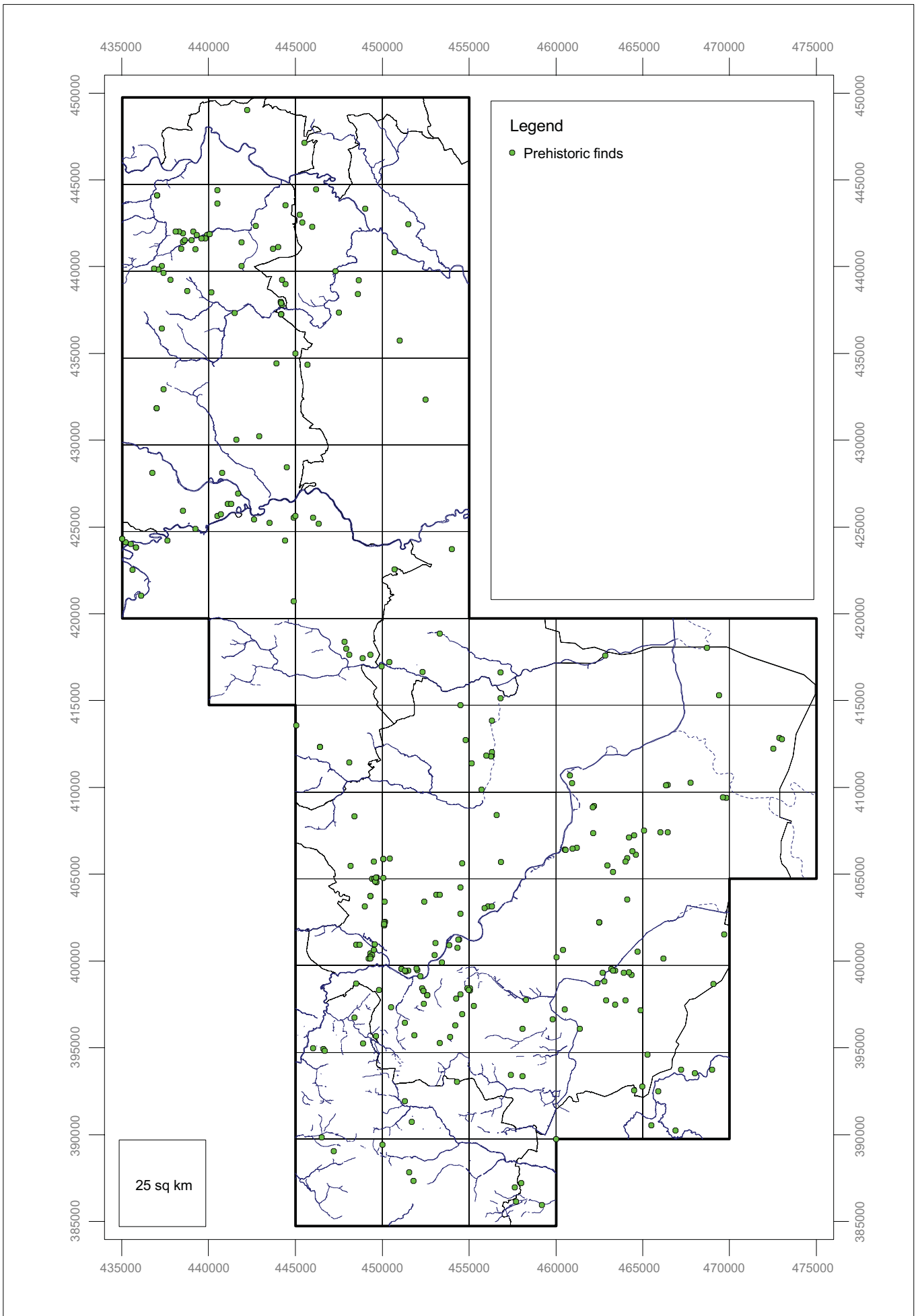


Fig. 8.1. Distribution of prehistoric finds across the study area

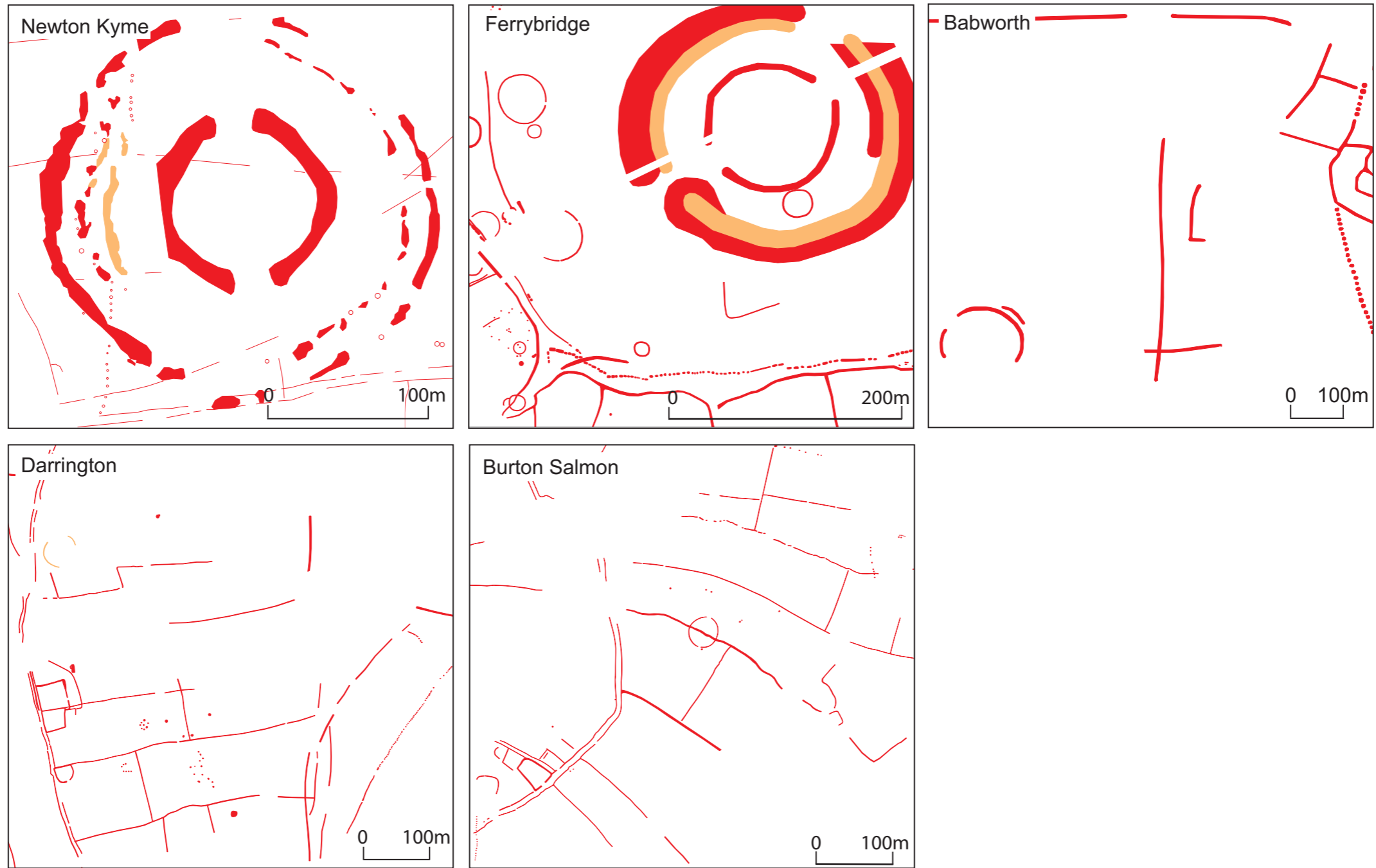


Fig. 8.1.1. Pit alignments and their possible associations with ritual monuments

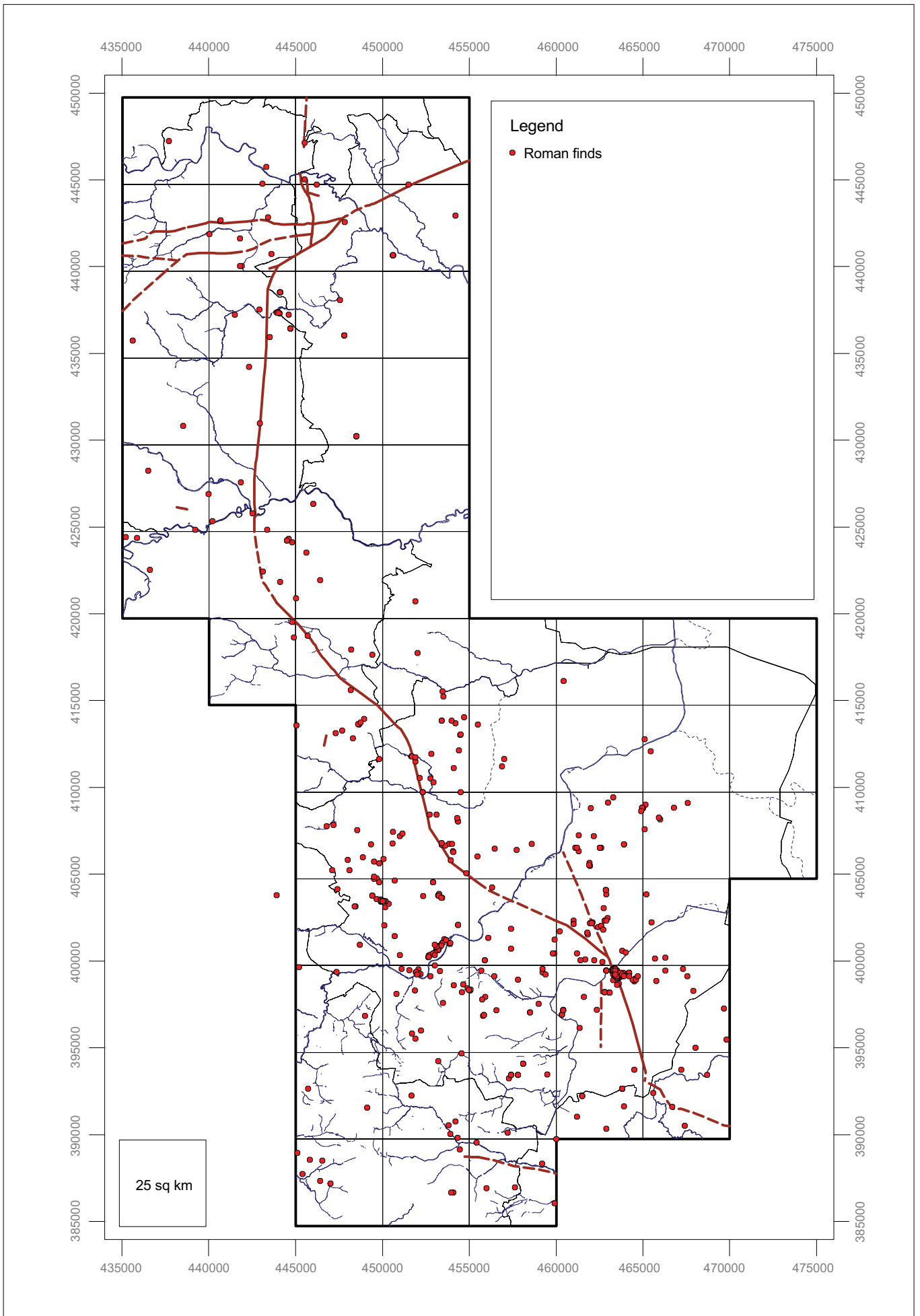


Fig. 8.1.2. Distribution of Roman finds across the study area

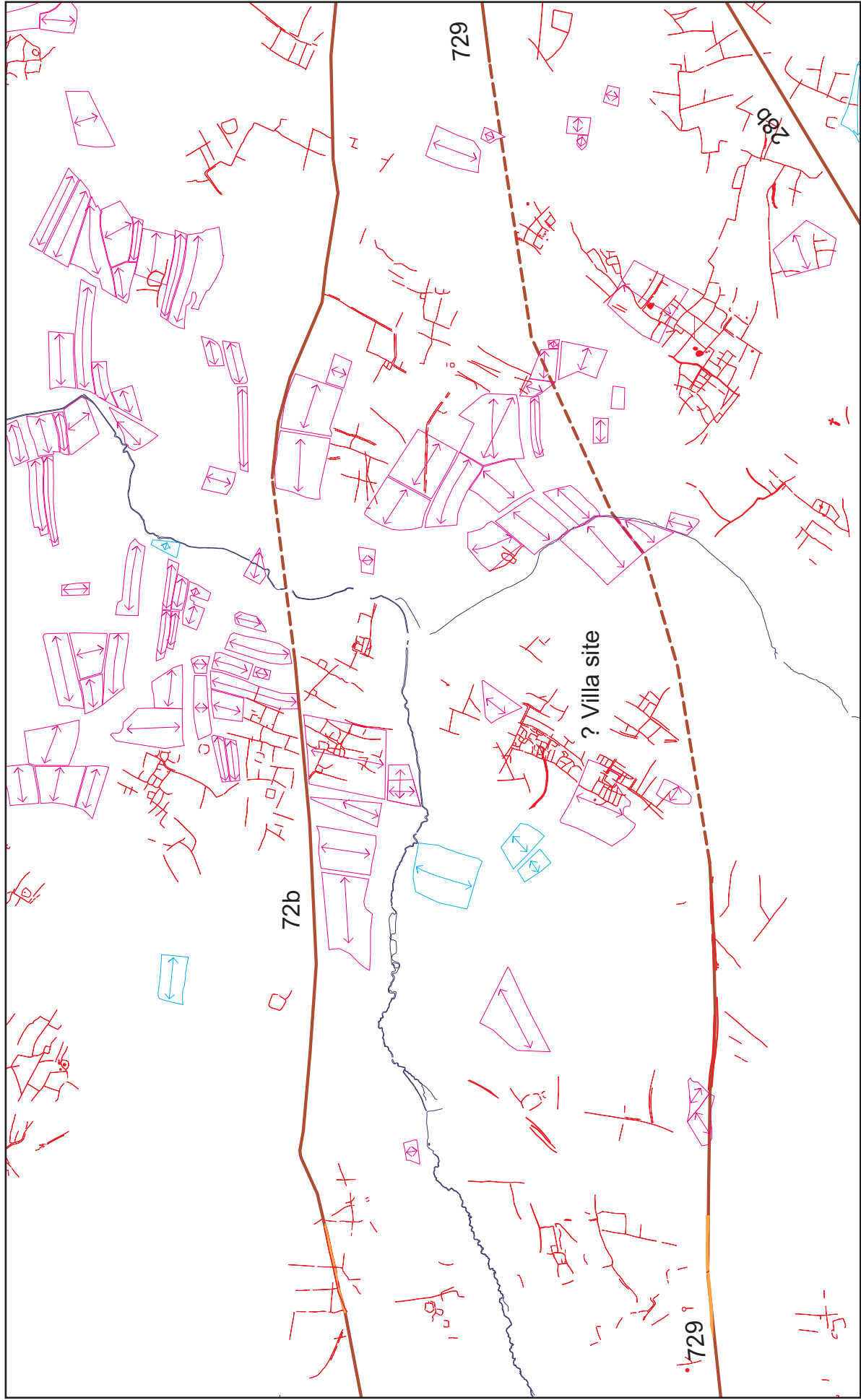


Fig. 8.3. Supposed route of Roman road 729 west of Tadcaster respecting a possible villa site near Bramham

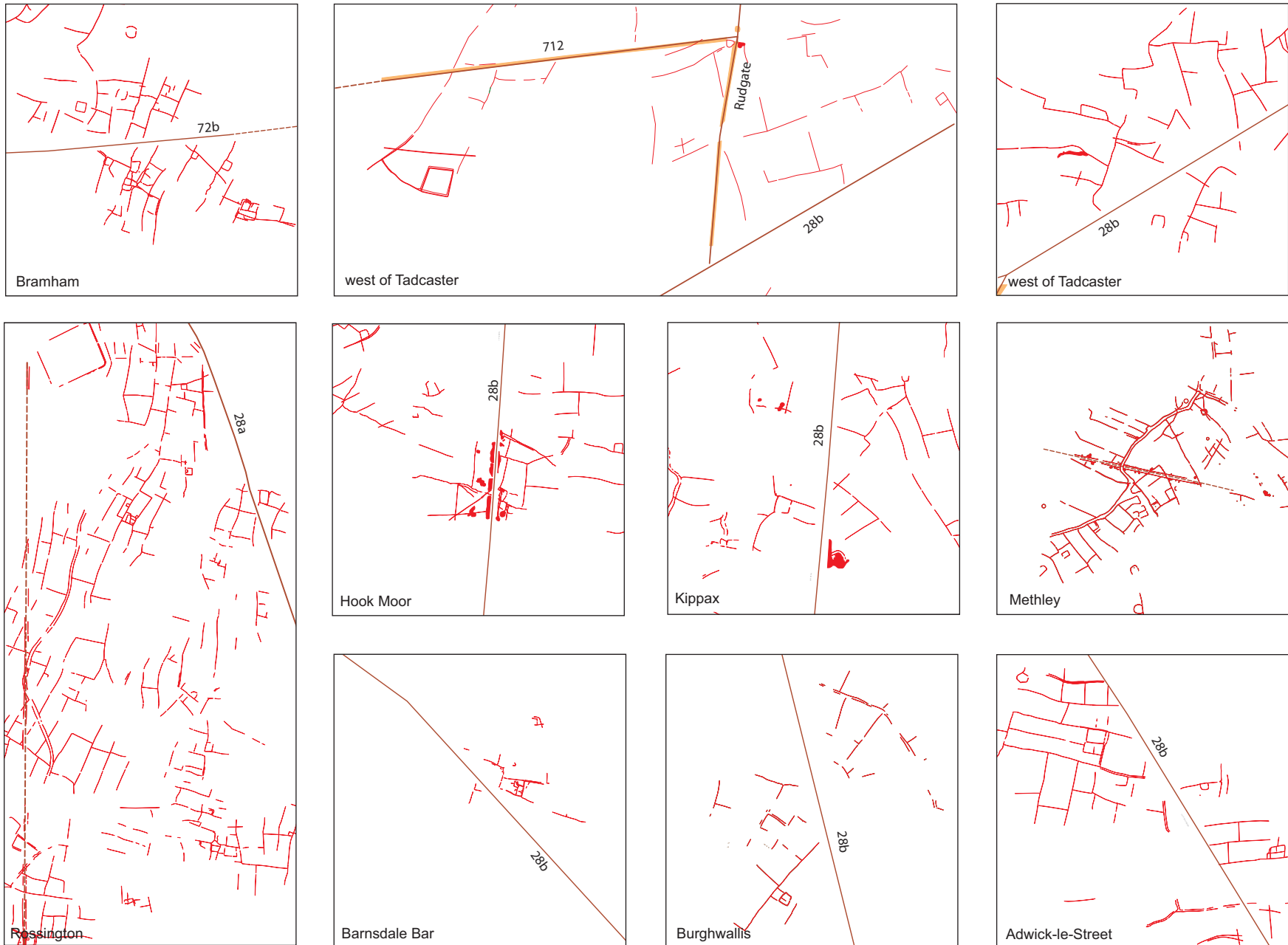


Fig. 8.4. The relationship of Roman roads with Iron Age field systems

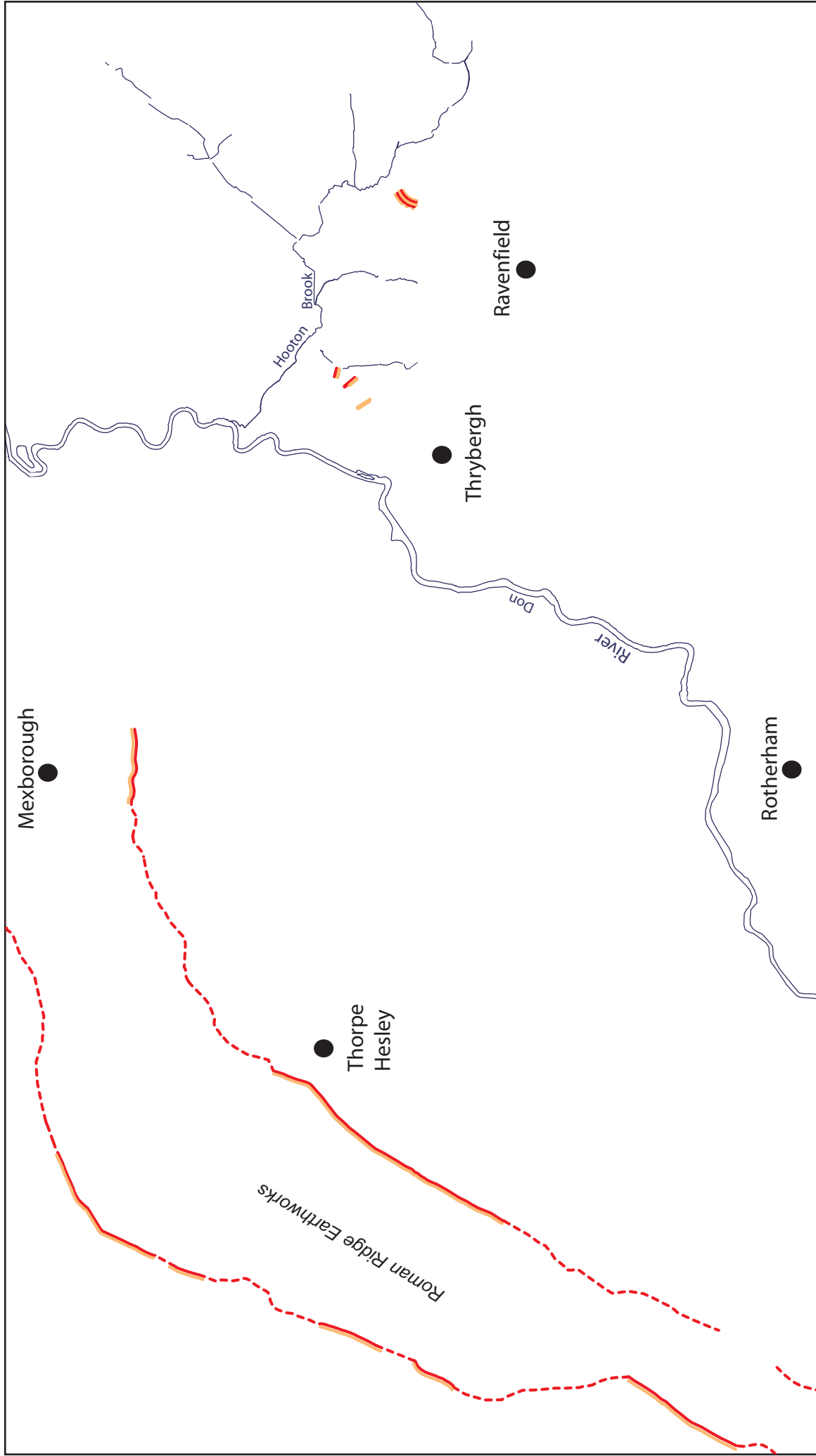


Fig. 8.5. Prehistoric linear defences on the Don west of Doncaster

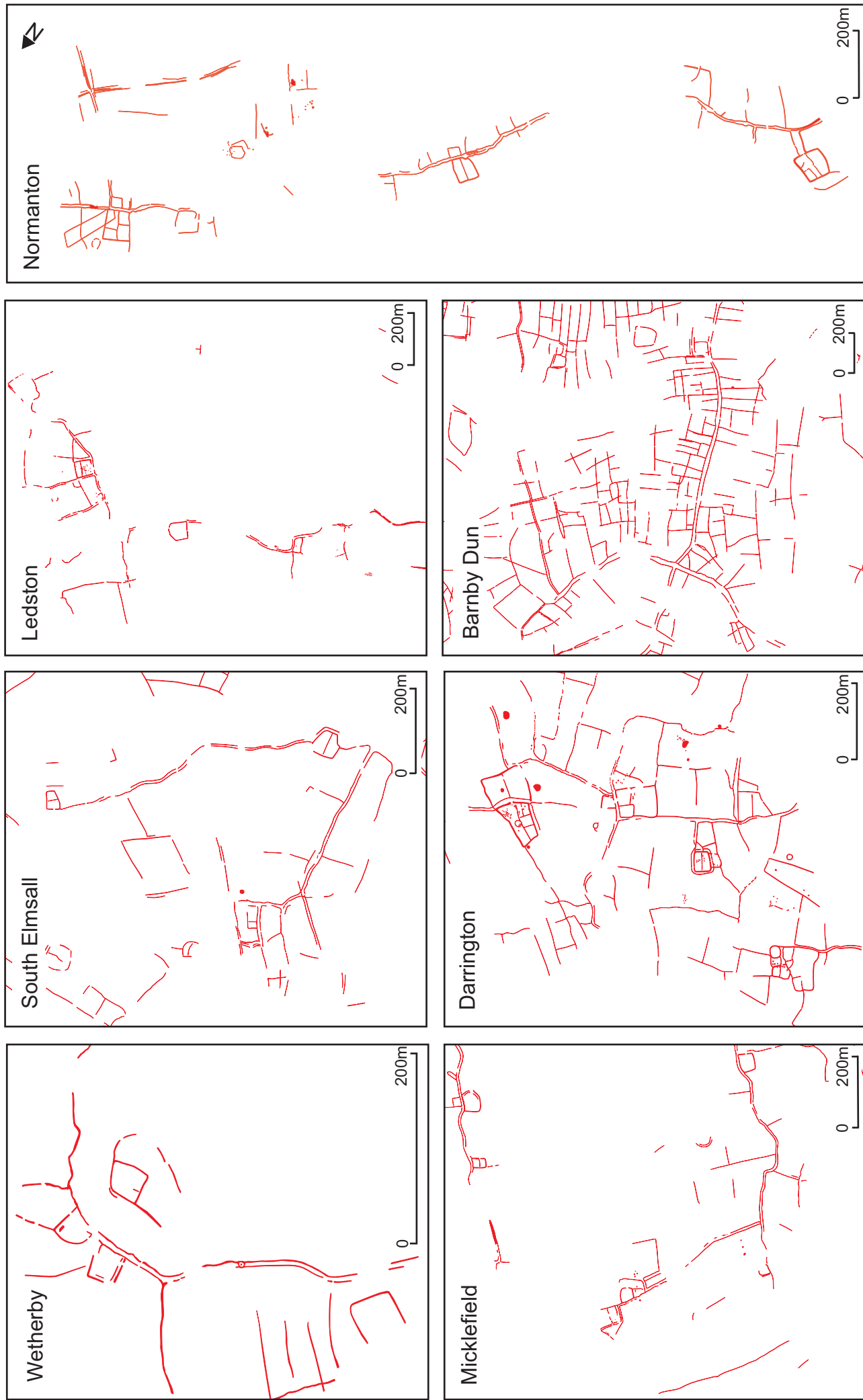


Fig. 8.7. Earlier prehistoric enclosures and meandering trackways