



Enabling European Archaeological Research

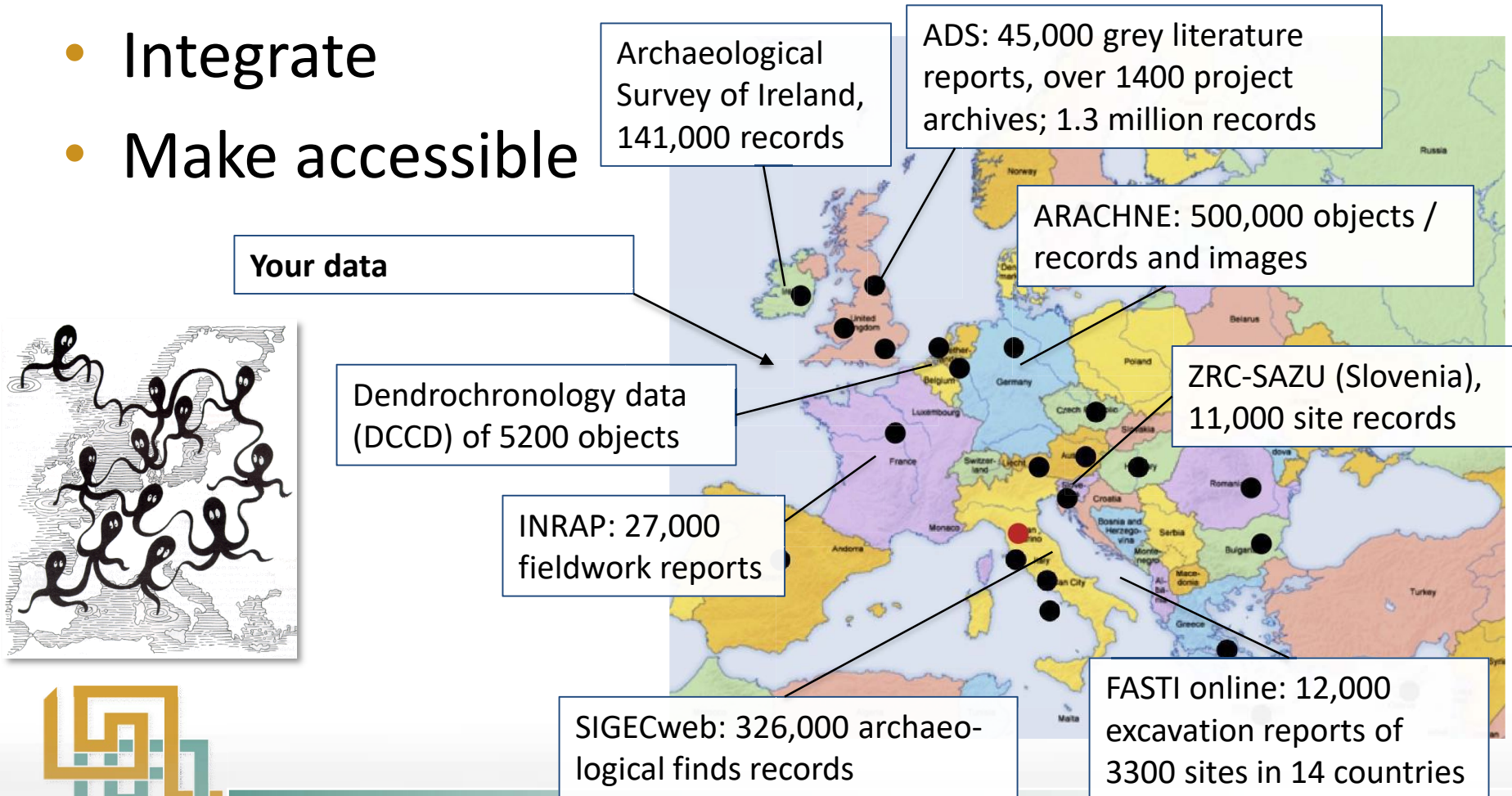
Julian Richards¹, Franco Niccolucci²,
Holly Wright¹, Katie Green¹,

¹Universities of York (ADS) & ²Florence (PIN)



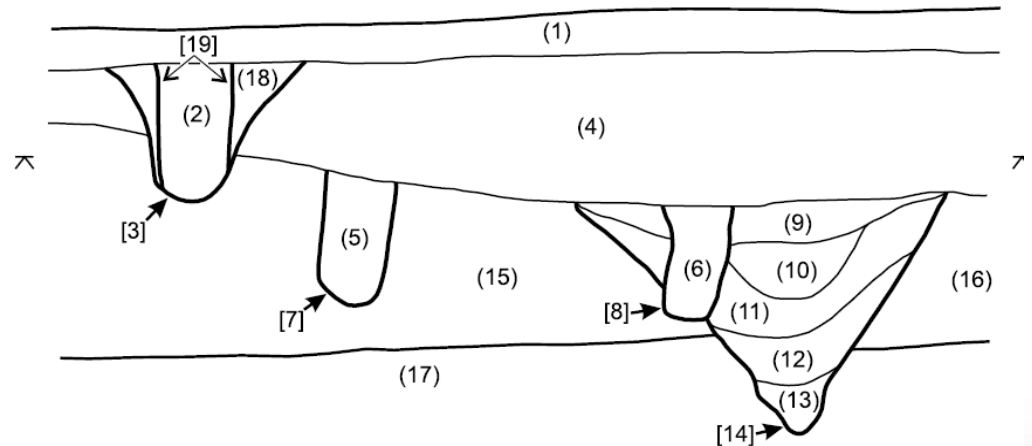
Data sharing

- Mobilize
- Integrate
- Make accessible



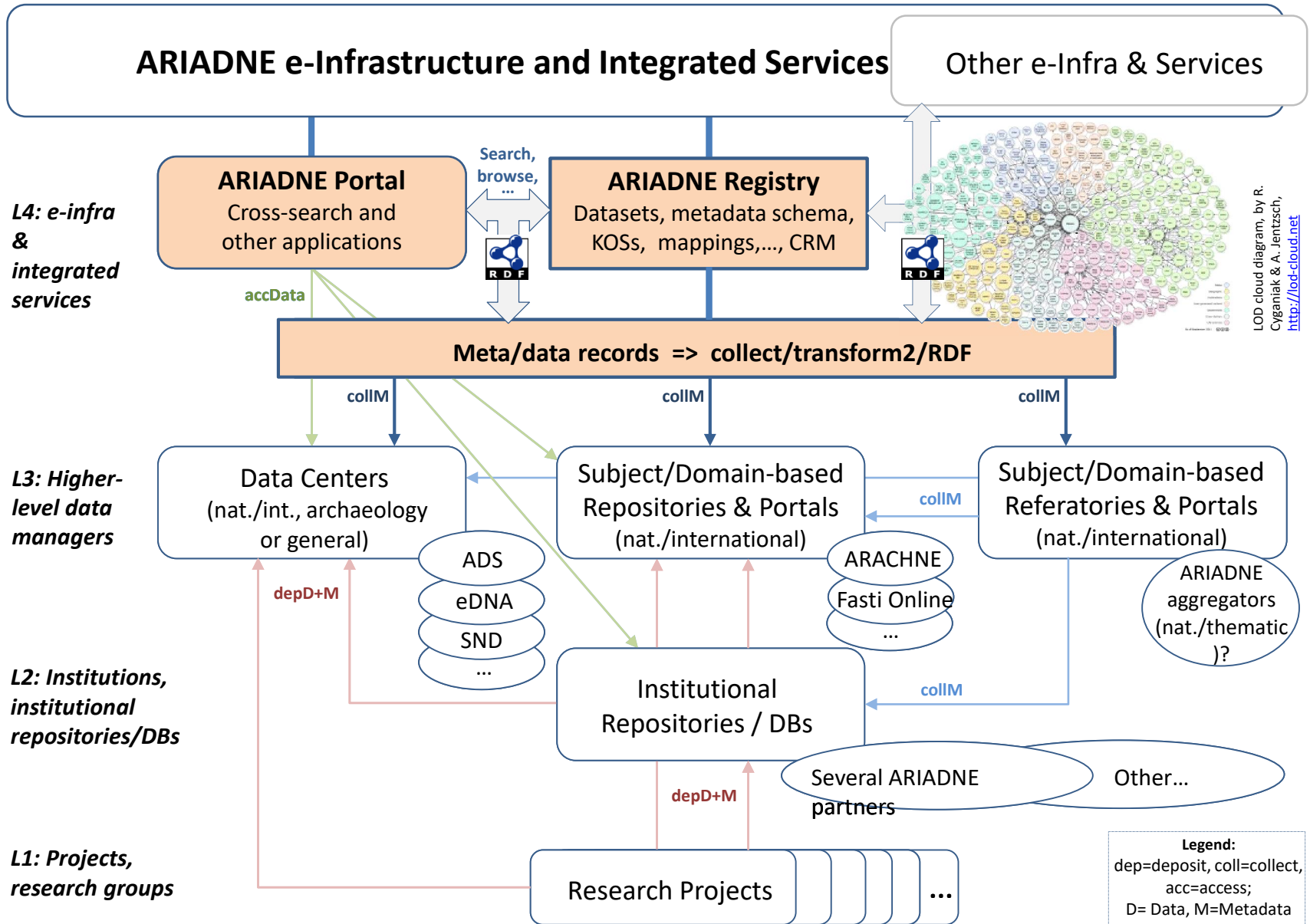
Achieving interoperability

- We have datasets in many languages and complying with many different standards
- ARIADNE uses the CIDOC CRM with extensions for archaeology to achieve integration
 - Existing datasets are mapped to the ARIADNE data model
 - WHAT: Subject concepts are mapped to the Getty A&AT
 - WHERE: WGS84
 - WHEN: Perio.do



Interoperability Framework

ARIADNE Users Framework



WHAT: multilingual support



The screenshot shows a web interface with a search bar at the top containing the text "Start a new search..." and a magnifying glass icon. To the right of the search bar is a "Catalog" link with a globe icon. Below the search bar, the main content area displays the search results for "ring brooches".

ring brooches

Getty AAT ID 300263352

Note Brooches in the shape of a ring, with a movable pin that may extend beyond the diameter of the ring; usually of metal and often ornamented. Used to fasten costume and worn especially during the Medieval period in Europe.

URI <http://vocab.getty.edu/aat/300263352>

Broader  brooches

Terms

English [ring brooches](#) [brooches, annular](#) [brooch, annular](#) [ring brooch](#) [annular brooches](#) [annular brooch](#) [brooches, ring](#) [ring-brooch](#)
[brooch, ring](#) [ring-brooches](#)

Spanish [broches](#) [ring brooch](#) [broche](#)

Dutch [ringbroches](#) [ringbroche](#)

Provider mapping

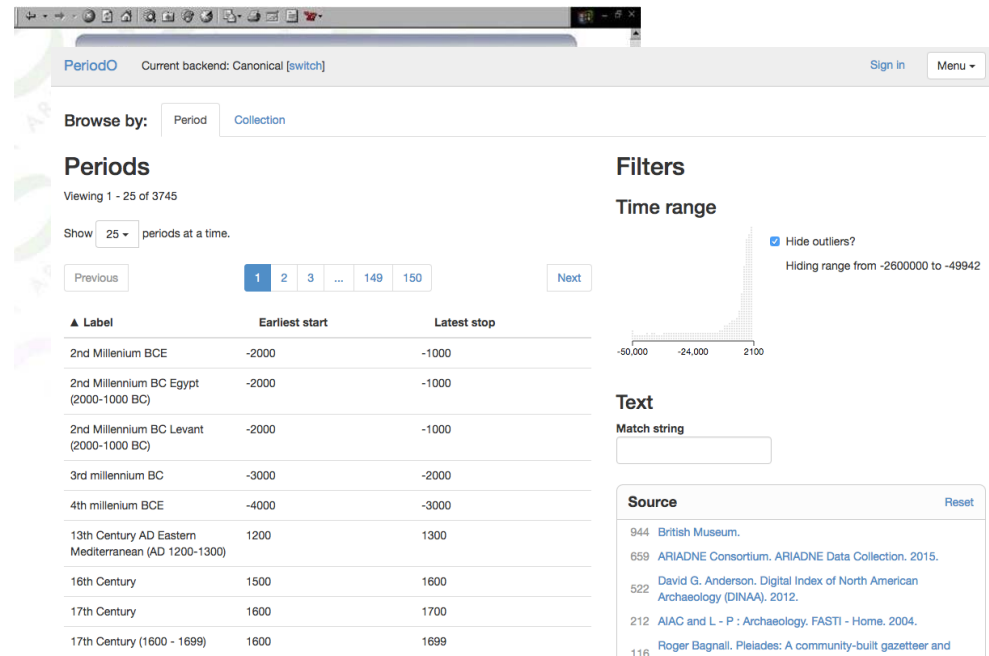
ANNULAR BROOCH

Match URI <http://www.w3.org/2004/02/skos/core#exactMatch>

Source URI http://purl.org/heritagedata/schemes/mda_obj/concepts/97114

WHEN: ARIADNE and PeriodO

- PeriodO is a Linked Open Data gazetteer
 - Scholarly definitions of historical, art-historical and archaeological periods
 - Now includes period terms from ARIADNE partners
 - The terms have PeriodO URIs
- Allows for easier linking of datasets that define periods differently
 - (when is always linked with where in archaeology)



The screenshot shows the PeriodO website interface. At the top, it says "PeriodO" and "Current backend: Canonical [switch]". There are "Sign in" and "Menu" buttons. Below that, there are tabs for "Browse by: Period" and "Collection". The main section is titled "Periods" and shows "Viewing 1 - 25 of 3745". There is a "Show" dropdown set to "25" and "periods at a time." Below that are "Previous" and "Next" buttons, and a pagination bar with "1", "2", "3", "...", "149", "150".

▲ Label	Earliest start	Latest stop
2nd Millenium BCE	-2000	-1000
2nd Millenium BC Egypt (2000-1000 BC)	-2000	-1000
2nd Millenium BC Levant (2000-1000 BC)	-2000	-1000
3rd millenium BC	-3000	-2000
4th millenium BCE	-4000	-3000
13th Century AD Eastern Mediterranean (AD 1200-1300)	1200	1300
16th Century	1500	1600
17th Century	1600	1700
17th Century (1600 - 1699)	1600	1699

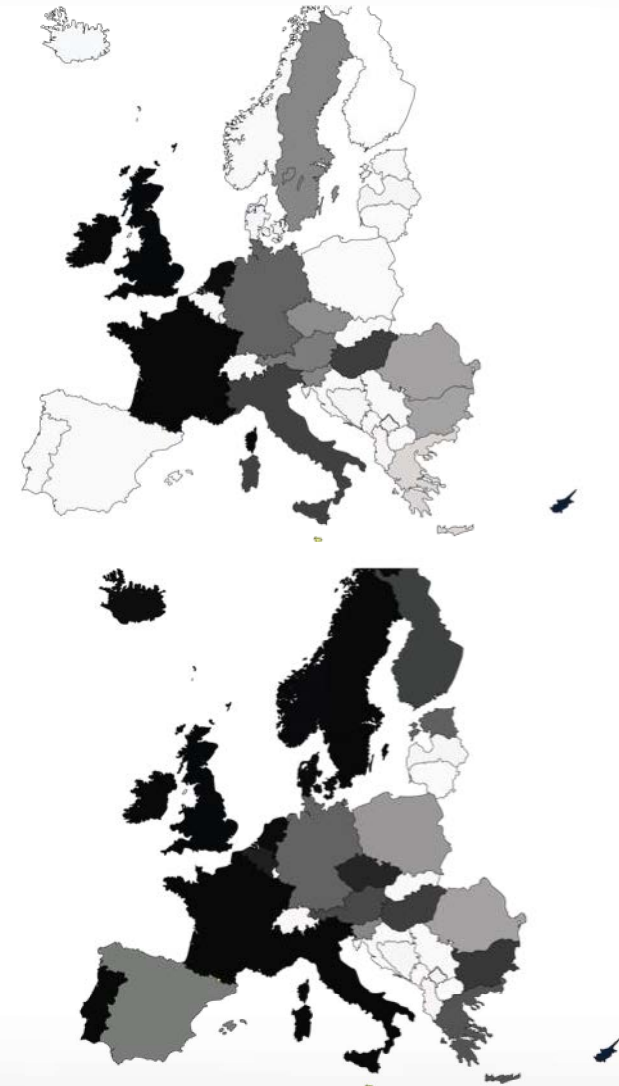
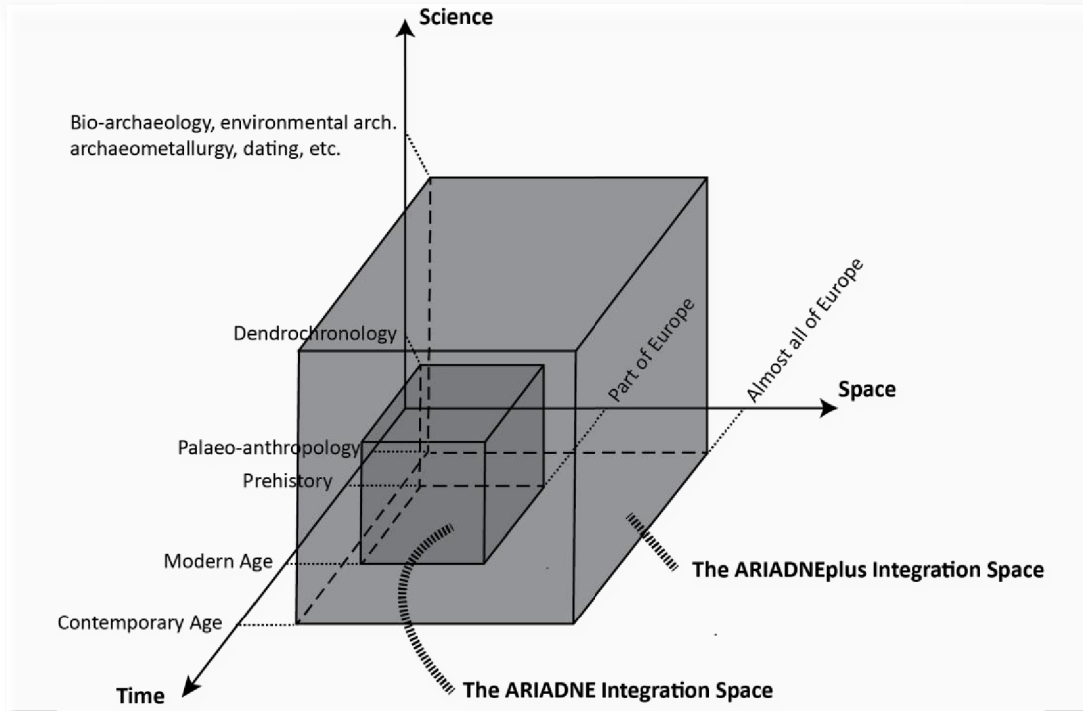
On the right side, there are "Filters". Under "Time range", there is a "Hide outliers?" checkbox and a note "Hiding range from -2600000 to -49942". Below that is a "Text" section with a "Match string" input field. At the bottom right, there is a "Source" section with a "Reset" button and a list of sources:

- 944 British Museum.
- 659 ARIADNE Consortium. ARIADNE Data Collection. 2015.
- 525 David G. Anderson. Digital Index of North American Archaeology (DINAA). 2012.
- 212 AIAC and L - P : Archaeology. FASTI - Home. 2004.
- 116 Roger Bagnall. Pleiades: A community-built gazetteer and

<http://perio.do/>



STOP PRESS: ARIADNEplus 2018-22: €6.6m



ARIADNE: 24 partners; 18 countries
ARIADNEplus: 41 partners; 27 countries, including Argentina, Japan & USA

