

# The Archaeology Data Service (DIGILAB)



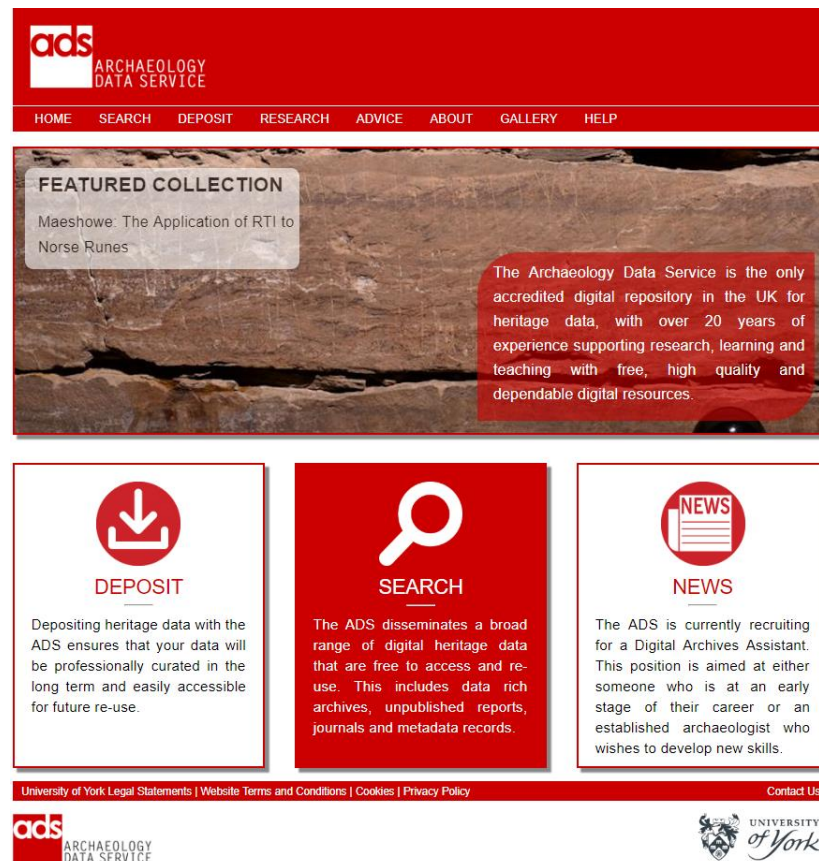
Tim Evans  
tim.evans@york.ac.uk

# Introduction to the ADS

## The Archaeology Data Service:

“Supporting research, learning and teaching with free, high quality and dependable digital resources”

- Collects + Preserves datasets.
- Provides easy and free access to data.
- Provides guidance and support to data creators.



# Introduction to the ADS

- Set up in 1996 .
- Based within the University of York.
- 12 staff.
- Business model based upon charging policy.
- Trusted Digital Repository: Data Seal of Approval (working to Core Trust Seal).
- Received Digital Preservation Coalition's Decennial Award in 2012.



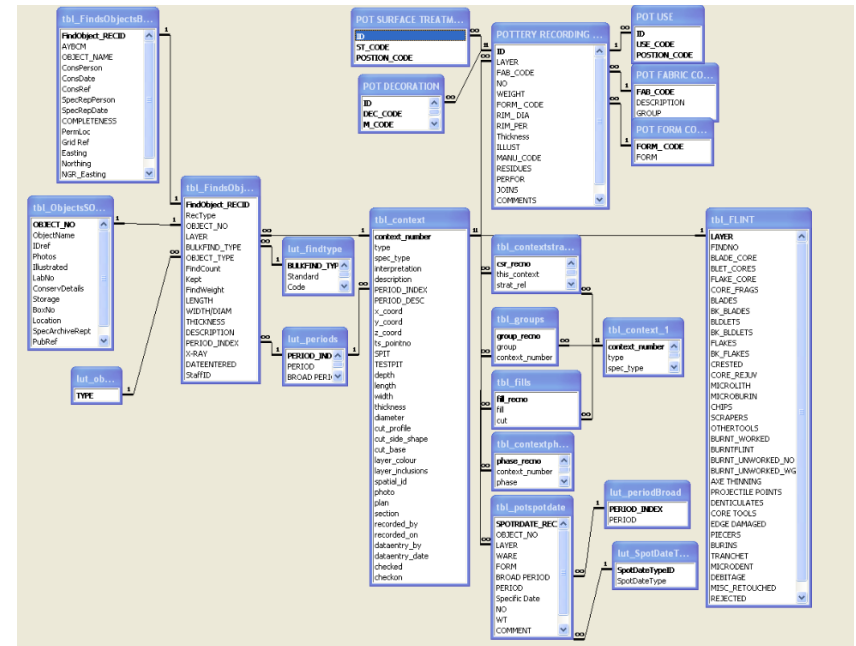
# Challenges for Archaeology

## Digital Data and Archaeology

- Archaeology is **destructive**
- Comprehensive records of field work are imperative
- Majority of data recorded in grey literature
- Traditionally, access to data has been problematic



# Challenges for Archaeology



# ADS collections

ads  
ARCHAEOLOGY  
DATA SERVICE

HOME SEARCH DEPOSIT RESEARCH ADVICE ABOUT HELP


## Roman Amphorae: a digital resource

University of Southampton, 2005 (updated 2014)

[Home](#)  
[Introduction](#)  
[Catalogue](#)  
[Fabrics](#)  
[Search](#)  
[Reference](#)  
[Metadata](#)  
[Usage Statistics](#)

Data copyright © University of Southampton unless otherwise stated

---



Arts & Humanities  
Research Council

---

**Primary contact**  
Dr David Williams  
Dept of Archaeology  
University of Southampton  
Avenue Campus  
Highfield  
Southampton  
SO17 1BJ  
England  
Tel: 080 593032

[Send e-mail enquiry](#)

### Catalogue of Amphora

Choose a letter from the list below.


[A](#) | [B](#) | [C](#) | [D](#) | [E](#) | [F](#) | [G](#) | [H](#) | [I](#) | [K](#) | [L](#) | [M](#) | [O](#) | [P](#) | [R](#) | [S](#) | [T](#) | [U](#) | [V](#)

This is the catalogue of preferred terms; if the term you are looking for is not here, please search the [alternative classifications](#).

Amphora types beginning with **A**.

Use the **I** link to view the more details of the type, including photos, drawings, thin sections, petrology and bibliographic information.

<b>I</b> Africana 1 Piccolo	<b>I</b> Almagro 51C
<b>I</b> Africana 2A Grande	<b>I</b> Almagro 51C Variant
<b>I</b> Africana 2B Grande	<b>I</b> Almagro 54
<b>I</b> Africana 2B Pseudo-Tripolitanian	<b>I</b> AM72
<b>I</b> Africana 2C Grande	<b>I</b> Amphorae Saumure d'Espagne
<b>I</b> Africana 2D Grande	<b>I</b> Amphore de Pamphylie
<b>I</b> Africana 3A	<b>I</b> Amphore Égyptienne 1
<b>I</b> Africana 3B	<b>I</b> Amphore Égyptienne 2
<b>I</b> Africana 3C	<b>I</b> Amphore Égyptienne Bitronconique 3
<b>I</b> Agora F65-66	<b>I</b> Amrit amphora
<b>I</b> Agora G199	<b>I</b> Ancient Tripolitanian Amphora
<b>I</b> Agora K109	<b>I</b> Aquincum 78
<b>I</b> Agora M54	



*Africana 1 Piccolo*

<https://doi.org/10.5284/1028192>



# ADS collections

ads ARCHAEOLOGY DATA SERVICE

HOME ARCHSEARCH ARCHIVES ADS-easy LEARNING ADVICE RESEARCH ABOUT US BLOG LOGIN

► ALL | JOURNALS AND SERIES | GREY LITERATURE | PROJECT ARCHIVES | BIBLIOGRAPHIES | THESES

## The Rural Settlement of Roman Britain: an online resource

Martyn Allen, Nathan Blick, Tom Brindle, [Tim Evans](#), Michael Fulford, Neil Holbrook, [Julian D Richards](#), Alex Smith, 2015

### Introduction

#### Query

#### Map

#### Metadata

#### Usage Statistics

#### Feedback questionnaire

Data copyright © University of Reading  
unless otherwise stated



### Primary contact

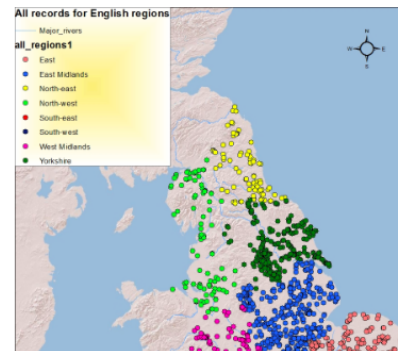
Prof Michael Fulford  
Professor of Archaeology  
School of Archaeology, Geography and  
Environmental Science  
University of Reading  
Whiteknights  
PO Box 218  
Reading  
RG6 6AA

### Introduction

This resource brings together the excavated evidence for the rural settlement of Roman Britain with the overarching aim to inform a comprehensive reassessment of the countryside of Roman Britain. It includes both traditionally published reports and 'grey literature' reports from developer-funded excavations since 1990.


The project arose from pilot projects undertaken by Cotswold Archaeology<sup>1</sup> and funded by Historic England and it began in 2012. It is funded by grants from the Leverhulme Trust to the Universities of Reading and York (ADS)<sup>2</sup> and from Historic England to Cotswold Archaeology.<sup>3</sup>

Phase 1 (April 2015) publishes the settlement evidence from Roman England. Subsequent phases will add Roman Wales (by December 2015) and the related finds, environmental and burial data (by 1st April 2017). These will be used alongside the specific site data in a series of integrative studies on rural settlement, economy, people and ritual to be published by the Society for the Promotion of Roman Studies as Britannia Monographs between 2016 and 2018.



<https://doi.org/10.5284/1030449>

# ADS collections



ARCHAEOLOGY  
DATA SERVICE

[HOME](#)
[SEARCH](#)
[DEPOSIT](#)
[RESEARCH](#)
[ADVICE](#)
[ABOUT](#)
[HELP](#)

## King Alfred Way, Newton Poppleford, Devon. Archaeological Excavation (OASIS ID: acarchae2-196268)


AC Archaeology Ltd, 2019

[Introduction](#)  
[Downloads](#)  
[Metadata](#)  
[Usage Statistics](#)


[Royal Albert Memorial Museum Collections](#)

Data copyright © AC Archaeology Ltd unless otherwise stated

This work is licensed under a [Creative Commons Attribution 4.0 International License](#).




---




---

**Primary contact**  
 AC Archaeology Ltd  
 4 Halthaies Workshops  
 Bradninch  
 Exeter  
 EX5 4LQ  
 Devon

---

**Resource identifiers**

ADS Collection: 3404  
 DOI: <https://doi.org/10.5284/1051617>

### Introduction

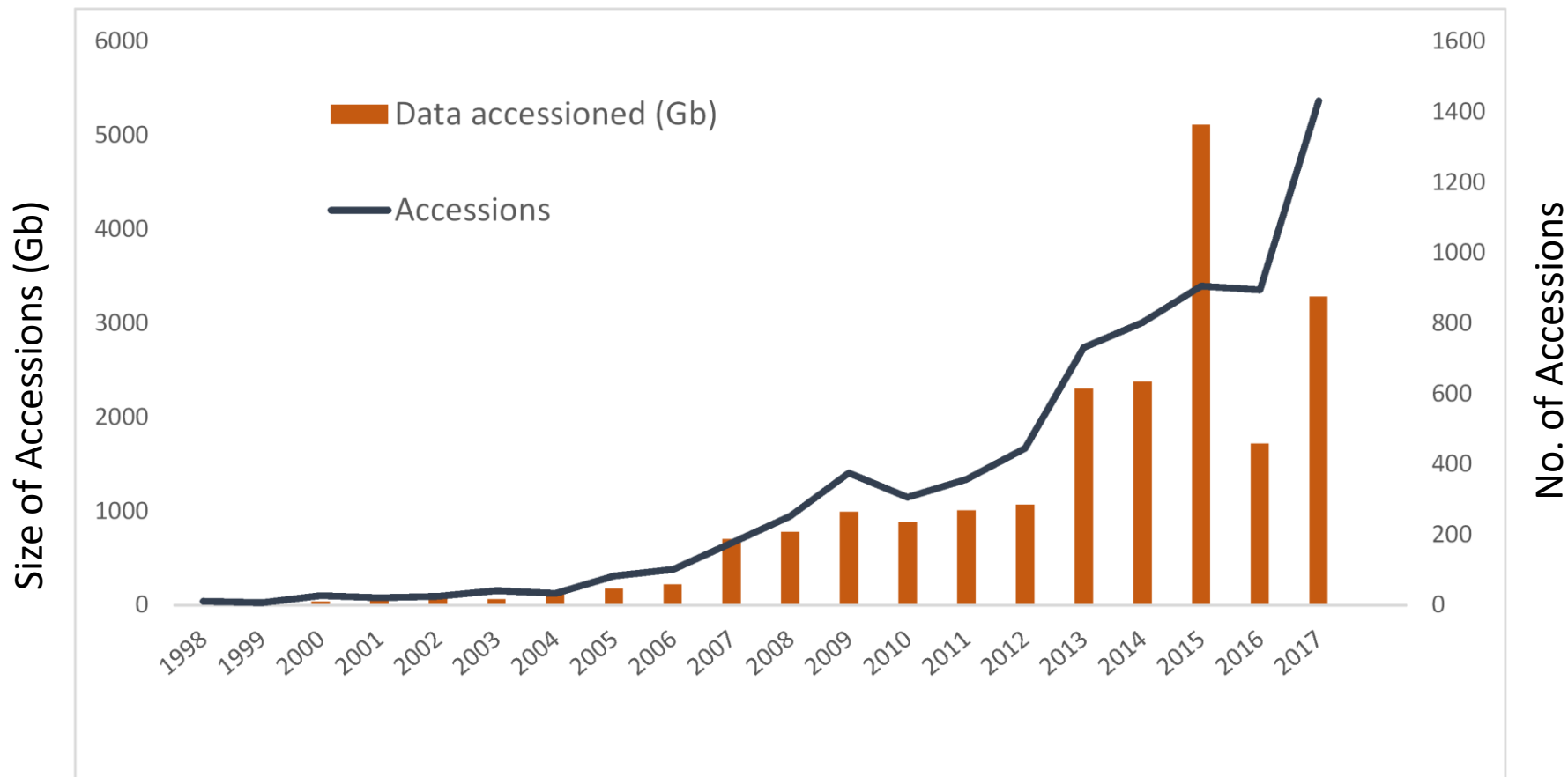
A rare Neolithic ring ditch which was the focus of a pair of graves containing cremated human remains was uncovered during archaeological works at King Alfred Way, Newton Poppleford. In the vicinity of the ring ditch were several pits or postholes, the finds from which indicated that they were largely contemporary with the ring ditch and graves, although a few finds including a sherd of Early Bronze Age Beaker pottery and some sherds of later Iron Age pottery indicate undefined later prehistoric use of the area. An assemblage of Peterborough ware pottery, worked flint and a radiocarbon date show that the main use of the site was during the Middle Neolithic period.



<https://doi.org/10.5284/1051617>

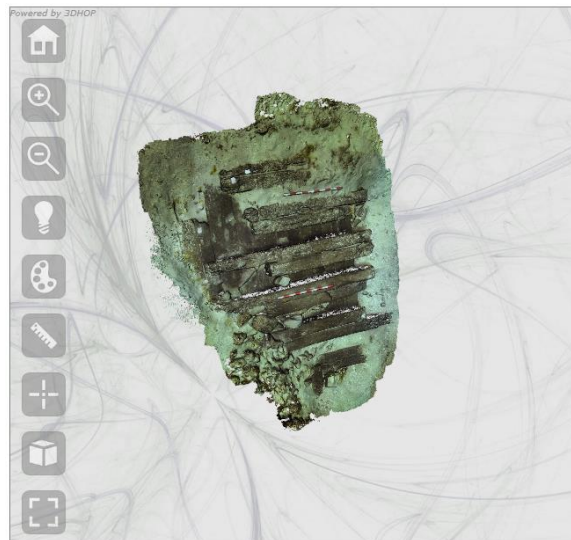


# ADS collections



**METADATA**

75	84	1/7/1980	Thursday	adhp11080	18	Anders Olsen-Thomsen	18/7/1914	Deutscher	ad1702	Roschen	Dan	6/7/2014	1.0	SP101	3446	Grave	9/11/2004	1
75	85	1/7/1980	Friday	adhp11081	19	Anders Olsen-Thomsen	18/7/1914	Deutscher	ad1702	Roschen	Dan	6/7/2014	1.0	SP101	3446	Grave	9/11/2004	1
75	86	1/7/1980	Monday	adhp11084	12	Anders Olsen-Thomsen	18/7/1914	Deutscher	ad1702	Roschen	Dan	6/7/2014	1.0	SP101	3446	Grave	9/11/2004	1
75	87	1/7/1980	Tuesday	adhp11085	13	Anders Olsen-Thomsen	18/7/1914	Deutscher	ad1702	Roschen	Dan	6/7/2014	1.0	SP101	3446	Grave	9/11/2004	1
75	88	1/7/1980	Wednesday	adhp11086	14	Anders Olsen-Thomsen	18/7/1914	Deutscher	ad1702	Roschen	Dan	6/7/2014	1.0	SP101	3446	Grave	9/11/2004	1
75	89	1/7/1980	Thursday	adhp11087	15	Anders Olsen-Thomsen	18/7/1914	Deutscher	ad1702	Roschen	Dan	6/7/2014	1.0	SP101	3446	Grave	9/11/2004	1
75	90	1/7/1980	Friday	adhp11088	16	Anders Olsen-Thomsen	18/7/1914	Deutscher	ad1702	Roschen	Dan	6/7/2014	1.0	SP101	3446	Grave	9/11/2004	1
75	91	1/7/1980	Monday	adhp11091	11	Anders Olsen-Thomsen	18/7/1914	Deutscher	ad1702	Roschen	Dan	6/7/2014	1.0	SP101	3446	Grave	9/11/2004	1
75	92	1/7/1980	Tuesday	adhp11092	12	Anders Olsen-Thomsen	18/7/1914	Deutscher	ad1702	Roschen	Dan	6/7/2014	1.0	SP101	3446	Grave	9/11/2004	1
75	93	1/7/1980	Wednesday	adhp11093	13	Anders Olsen-Thomsen	18/7/1914	Deutscher	ad1702	Roschen	Dan	6/7/2014	1.0	SP101	3446	Grave	9/11/2004	1
75	94	1/7/1980	Thursday	adhp11094	14	Anders Olsen-Thomsen	18/7/1914	Deutscher	ad1702	Roschen	Dan	6/7/2014	1.0	SP101	3446	Grave	9/11/2004	1
75	95	1/7/1980	Friday	adhp11095	15	Anders Olsen-Thomsen	18/7/1914	Deutscher	ad1702	Roschen	Dan	6/7/2014	1.0	SP101	3446	Grave	9/11/2004	1
75	96	1/7/1980	Monday	adhp11098	18	Anders Olsen-Thomsen	18/7/1914	Deutscher	ad1702	Roschen	Dan	6/7/2014	1.0	SP101	3446	Grave	9/11/2004	1
75	97	1/7/1980	Tuesday	adhp11099	19	Anders Olsen-Thomsen	18/7/1914	Deutscher	ad1702	Roschen	Dan	6/7/2014	1.0	SP101	3446	Grave	9/11/2004	1
75	98	1/7/1980	Wednesday	adhp11100	20	Anders Olsen-Thomsen	18/7/1914	Deutscher	ad1702	Roschen	Dan	6/7/2014	1.0	SP101	3446	Grave	9/11/2004	1
75	99	1/7/1980	Thursday	adhp11101	21	Anders Olsen-Thomsen	18/7/1914	Deutscher	ad1702	Roschen	Dan	6/7/2014	1.0	SP101	3446	Grave	9/11/2004	1
75	100	1/7/1980	Friday	adhp11102	22	Anders Olsen-Thomsen	18/7/1914	Deutscher	ad1702	Roschen	Dan	6/7/2014	1.0	SP101	3446	Grave	9/11/2004	1
75	101	1/7/1980	Monday	adhp11105	25	Anders Olsen-Thomsen	18/7/1914	Deutscher	ad1702	Roschen	Dan	6/7/2014	1.0	SP101	3446	Grave	9/11/2004	1
75	102	1/7/1980	Tuesday	adhp11106	26	Anders Olsen-Thomsen	18/7/1914	Deutscher	ad1702	Roschen	Dan	6/7/2014	1.0	SP101	3446	Grave	9/11/2004	1
75	103	1/7/1980	Wednesday	adhp11107	27	Anders Olsen-Thomsen	18/7/1914	Deutscher	ad1702	Roschen	Dan	6/7/2014	1.0	SP101	3446	Grave	9/11/2004	1
75	104	1/7/1980	Thursday	adhp11108	28	Anders Olsen-Thomsen	18/7/1914	Deutscher	ad1702	Roschen	Dan	6/7/2014	1.0	SP101	3446	Grave	9/11/2004	1
75	105	1/7/1980	Friday	adhp11109	29	Anders Olsen-Thomsen	18/7/1914	Deutscher	ad1702	Roschen	Dan	6/7/2014	1.0	SP101	3446	Grave	9/11/2004	1
75	106	1/7/1980	Monday	adhp11110	30	Anders Olsen-Thomsen	18/7/1914	Deutscher	ad1702	Roschen	Dan	6/7/2014	1.0	SP101	3446	Grave	9/11/2004	1



AIP

DIP

AIP

DIP

AIP

DIP

SIP

SIP

SIP

Metadata

OBJ + MTL  
+Textures

Source images  
(lots of raw)

REP_ID	PURPOSE	FILE_NAME	FILE_SIZE	CHECKSUM	OBJECT_ID
3,935,118	Original	Bayo_04_obj.jpg	2,646,743	d82278660faeb15979ce47a2408033fd	1,640,995
3,935,119	Original	Bayo_04_obj.mtl	591	85d7f17485d895259dc47f2b8c7770bd	1,640,995
3,935,120	Original	Bayo_04_obj.obj	62,254,861	52a77f1a869f06d225930d380a92df09	1,640,995
3,935,121	Original	Bayo_04_obj1.jpg	2,286,790	e81f43d7b8b7977ef8d0595617aae964	1,640,995
3,935,122	Original	Bayo_04_obj2.jpg	1,851,007	182af6c0d14222d8cfa9f9cf12644fdc	1,640,995
3,935,123	Original	Bayo_04_obj3.jpg	2,237,707	b92b8b585a1306524c53fc2a42f53a48	1,640,995

75	84	1/15/1980	Thursday	abfmp10082	18	Andreas Grosse-Thomann	00000/CA	Deutschler	abf71027	Rochester	Duques	6/16/2014	14-09-0103	Johann Grunewald	6/15/2014	1
75	85	1/15/1980	Friday	abfmp10083	20	Andreas Grosse-Thomann	00000/CA	Deutschler	abf71027	Rochester	Duques	6/16/2014	14-09-0103	Johann Grunewald	6/15/2014	1
75	86	1/16/1980	Monday	abfmp10084	12	Andreas Grosse-Thomann	00000/CA	Deutschler	abf71027	Rochester	Duques	6/16/2014	14-09-0103	Johann Grunewald	6/15/2014	1
75	87	1/16/1980	Tuesday	abfmp10085	18	Andreas Grosse-Thomann	00000/CA	Deutschler	abf71027	Rochester	Duques	6/16/2014	14-09-0103	Johann Grunewald	6/15/2014	1
75	88	1/16/1980	Wednesday	abfmp10086	18	Andreas Grosse-Thomann	00000/CA	Deutschler	abf71027	Rochester	Duques	6/16/2014	14-09-0103	Johann Grunewald	6/15/2014	1
75	89	1/17/1980	Thursday	abfmp10087	18	Andreas Grosse-Thomann	00000/CA	Deutschler	abf71027	Rochester	Duques	6/16/2014	14-09-0103	Johann Grunewald	6/15/2014	1
75	90	1/17/1980	Friday	abfmp10088	12	Andreas Grosse-Thomann	00000/CA	Deutschler	abf71027	Rochester	Duques	6/16/2014	14-09-0103	Johann Grunewald	6/15/2014	1
75	91	1/18/1980	Monday	abfmp10089	18	Andreas Grosse-Thomann	00000/CA	Deutschler	abf71027	Rochester	Duques	6/16/2014	14-09-0103	Johann Grunewald	6/15/2014	1
75	92	1/18/1980	Tuesday	abfmp10090	18	Andreas Grosse-Thomann	00000/CA	Deutschler	abf71027	Rochester	Duques	6/16/2014	14-09-0103	Johann Grunewald	6/15/2014	1
75	93	1/19/1980	Wednesday	abfmp10091	18	Andreas Grosse-Thomann	00000/CA	Deutschler	abf71027	Rochester	Duques	6/16/2014	14-09-0103	Johann Grunewald	6/15/2014	1
75	94	1/19/1980	Thursday	abfmp10092	18	Andreas Grosse-Thomann	00000/CA	Deutschler	abf71027	Rochester	Duques	6/16/2014	14-09-0103	Johann Grunewald	6/15/2014	1
75	95	1/20/1980	Friday	abfmp10093	20	Johann Grunewald	00000/CA	Deutschler	abf71028	Rochester	Duques	6/16/2014	14-09-0103	Johann Grunewald	6/15/2014	1
75	96	1/20/1980	Monday	abfmp10094	18	Johann Grunewald	00000/CA	Deutschler	abf71028	Rochester	Duques	6/16/2014	14-09-0103	Johann Grunewald	6/15/2014	1
75	97	1/21/1980	Tuesday	abfmp10095	12	Johann Grunewald	00000/CA	Deutschler	abf71028	Rochester	Duques	6/16/2014	14-09-0103	Johann Grunewald	6/15/2014	1
75	98	1/22/1980	Wednesday	abfmp10096	18	Johann Grunewald	00000/CA	Deutschler	abf71028	Rochester	Duques	6/16/2014	14-09-0103	Johann Grunewald	6/15/2014	1
75	99	1/22/1980	Thursday	abfmp10097	18	Johann Grunewald	00000/CA	Deutschler	abf71028	Rochester	Duques	6/16/2014	14-09-0103	Johann Grunewald	6/15/2014	1
75	100	1/23/1980	Friday	abfmp10098	18	Johann Grunewald	00000/CA	Deutschler	abf71028	Rochester	Duques	6/16/2014	14-09-0103	Johann Grunewald	6/15/2014	1
75	101	1/23/1980	Monday	abfmp10099	18	Johann Grunewald	00000/CA	Deutschler	abf71028	Rochester	Duques	6/16/2014	14-09-0103	Johann Grunewald	6/15/2014	1
75	102	1/24/1980	Tuesday	abfmp10100	18	Johann Grunewald	00000/CA	Deutschler	abf71028	Rochester	Duques	6/16/2014	14-09-0103	Johann Grunewald	6/15/2014	1
75	103	1/24/1980	Wednesday	abfmp10101	18	Johann Grunewald	00000/CA	Deutschler	abf71028	Rochester	Duques	6/16/2014	14-09-0103	Johann Grunewald	6/15/2014	1
75	104	1/25/1980	Thursday	abfmp10102	12	Johann Grunewald	00000/CA	Deutschler	abf71028	Rochester	Duques	6/16/2014	14-09-0103	Johann Grunewald	6/15/2014	1
75	105	1/26/1980	Friday	abfmp10103	18	Johann Grunewald	00000/CA	Deutschler	abf71028	Rochester	Duques	6/16/2014	14-09-0103	Johann Grunewald	6/15/2014	1
75	106	1/27/1980	Monday	abfmp10104	12	Johann Grunewald	00000/CA	Deutschler	abf71028	Rochester	Duques	6/16/2014	14-09-0103	Johann Grunewald	6/15/2014	1

# METADATA

process.validation

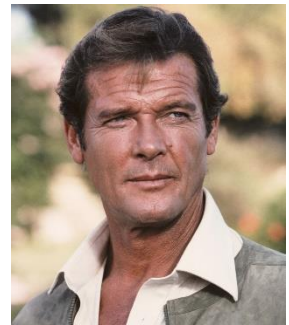
process.virus check

Is Documented In



process.normalization

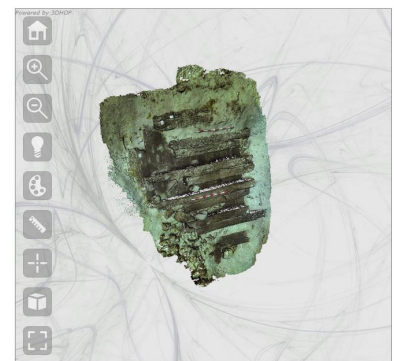
process.migration



agent.actor.r\_moore

agent.software.xnview

Is Source of





HERITAGE GATEWAY



Web Services / WMS / OAI-PMH

PostgreSQL



## Island Farm, Ottery St. Mary, Devon. Archaeological evaluation and excavation

Cotswold Archaeology, 2018

Introduction  
Downloads  
Metadata  
Usage Statistics

Royal Albert Memorial Museum  
Collections

Data copyright © Cotswold  
Archaeology unless otherwise stated



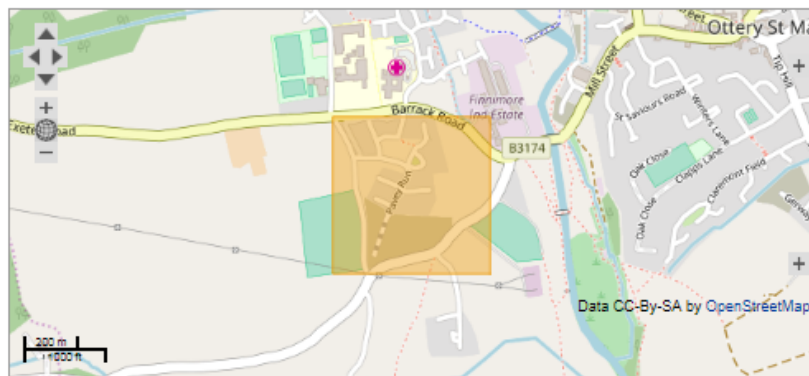
**Primary contact**  
Cotswold Archaeology  
Building 11  
Kemble Enterprise Park  
Cirencester  
GL7 6BQ  
UK  
Tel: 01285 771022  
Fax: 01285 771033

[Send e-mail enquiry](#)

### Resource identifier

ADS Collection: 3151  
DOI: <https://doi.org/10.5280/3151>  
How to cite using this DOI

### Island Farm, Ottery St. Mary, Devon. Archaeological evaluation and excavation



World region	British Isles and Ireland
British Isles country	England
English region	South West
County	Devon

Results	MetaData	Info	Overview / Charts	Rotated table	Results as text		
OBJEC...	OBJECT_ID	GIS_FILE_TYPE	GIS_FILE_P...	GIS_FILE_SOURCE	SOFTWARE	HARDWARE	
00	1,328,017	Point	OSGB	OS 2nd Edition Historic Mapping/OS Mastermap/HER data	MapInfo Professional	Laptop/Windows 8.45	
05	1,353,981	Polygon	OSGB36	Seaman, A., P. 2010: 'Towards a Predictive Model of Early Med...	ESRI ArcGIS	PC Windows 7	
01	1,328,015	Point	OSGB	OS 2nd Edition Historic Mapping/OS Mastermap/HER data	MapInfo Professional	Laptop/Windows 8.43	
02	1,328,016	Point	OSGB	OS 2nd Edition Historic Mapping/OS Mastermap/HER data	MapInfo Professional	Laptop/Windows 8.44	
03	1,328,022	Point	OSGB	OS 2nd Edition Historic Mapping/OS Mastermap/HER data	MapInfo Professional	Laptop/Windows 8.50	
04	1,328,023	Point	OSGB	OS 2nd Edition Historic Mapping/OS Mastermap/HER data	MapInfo Professional	Laptop/Windows 8.51	
05	1,328,024	Point	OSGB	OS 2nd Edition Historic Mapping/OS Mastermap/HER data	MapInfo Professional	Laptop/Windows 8.52	
06	1,328,025	Point	OSGB	OS 2nd Edition Historic Mapping/OS Mastermap/HER data	MapInfo Professional	Laptop/Windows 8.53	
07	1,328,026	Point	OSGB	OS 2nd Edition Historic Mapping/OS Mastermap/HER data	MapInfo Professional	Laptop/Windows 8.54	
08	1,328,034	Point	OSGB	OS 2nd Edition Historic Mapping/OS Mastermap/HER data	MapInfo Professional	Laptop/Windows 8.62	
09	1,328,027	Point	OSGB	OS 2nd Edition Historic Mapping/OS Mastermap/HER data	MapInfo Professional	Laptop/Windows 8.55	
10	1,328,028	Point	OSGB	OS 2nd Edition Historic Mapping/OS Mastermap/HER data	MapInfo Professional	Laptop/Windows 8.56	
11	1,328,029	Point	OSGB	OS 2nd Edition Historic Mapping/OS Mastermap/HER data	MapInfo Professional	Laptop/Windows 8.57	
12	1,328,030	Point	OSGB	OS 2nd Edition Historic Mapping/OS Mastermap/HER data	MapInfo Professional	Laptop/Windows 8.58	
14	1,353,979	Polygon	OSGB36	This shapefile is based on data derived from the Tithe survey ...	ESRI ArcGIS	PC Windows 7	
11	1,376,363	Raster	OSGB36	<null>	AutoCAD	PC - Microsoft Windows 7	
12	1,376,371	Raster	OSGB36	<null>	AutoCAD	PC - Microsoft Windows 7	
10	1,387,485	Raster	NONE	Original geophysical data	ArcGIS	Windows 7	
11	1,387,486	Raster	NONE	Geophysical survey	ArcGIS	Windows 7	
12	1,388,335	Raster	OSGB36	Various- uses OS mapping, and GPS points taken physically ...	AutoCAD LT 2015	PC Microsoft Windows 7	
13	1,388,336	Raster	OSGB36	Various- includes OS mapping & GPS points taken physically ...	AutoCAD LT 2015	PC Microsoft Windows 7	
14	1,388,759	Raster	OSGB36	Various- uses GPS points taken physically within field	AutoCAD LT 2015	PC Microsoft Windows 7	
15	1,388,762	Raster	OSGB36	Various-includes OS mapping & GPS points taken physically ...	AutoCAD LT 2015	PC Microsoft Windows 7	
16	1,389,118	Raster	OSGB36	Surveyed geophysical data	Manifold System 8.0	PC Windows 10 (64 bit)	
17	1,390,116	Polygon	OSGB36	Survey data	ArcGIS	PC	

Objects  
(England)



# ARIADNE

- EU FP7 project under the 'Infrastructures' theme, including 23 European partners across 16 countries
- Four-year project: ended January 2017
- 17 Workpackages – primary deliverable: collection level metadata aggregation portal
- Coordinator: PIN Scri - Polo Universitario "Città di Prato" at the University of Florence
- Deputy Coordinator: ADS



<http://portal.ariadne-infrastructure.eu/>



# ARIADNE

- ARIADNE succeeded in integrating archaeological datasets in its Registry, with more than 1.700.000 datasets recorded and managed according to the FAIR principles
- <http://portal.ariadne-infrastructure.eu/>
- Built a community of use consisting of about 11.000 archaeologists engaged with its services



# ARIADNEplus



- Extending and Focusing ARIADNE
- Extending the ARIADNEplus approach to new communities, both geographically and thematically
- Consolidating the archaeological community around the ARIADNEplus approach
- Fostering the Open Science approach and data FAIRness
- Preparing the community for the ARIADNEplus Cloud within the **European Open Science Cloud (EOSC)**

*ARIADNEplus is funded by the European Commission's Horizon 2020 Programme*



# ARIADNEplus

ARIADNE:

24 partners; 18 countries



ARIADNEplus:

41 partners; 27 countries



Plus: Argentina, Japan & USA

# Thanks!

[tim.evans@york.ac.uk](mailto:tim.evans@york.ac.uk)

<http://archaeologydataservice.ac.uk/blog/>

[https://twitter.com/ADS\\_Update](https://twitter.com/ADS_Update)

[help@archaeologydataservice.ac.uk](mailto:help@archaeologydataservice.ac.uk)