



Archaeology  
Data Service

# The Importance of Being Explicit

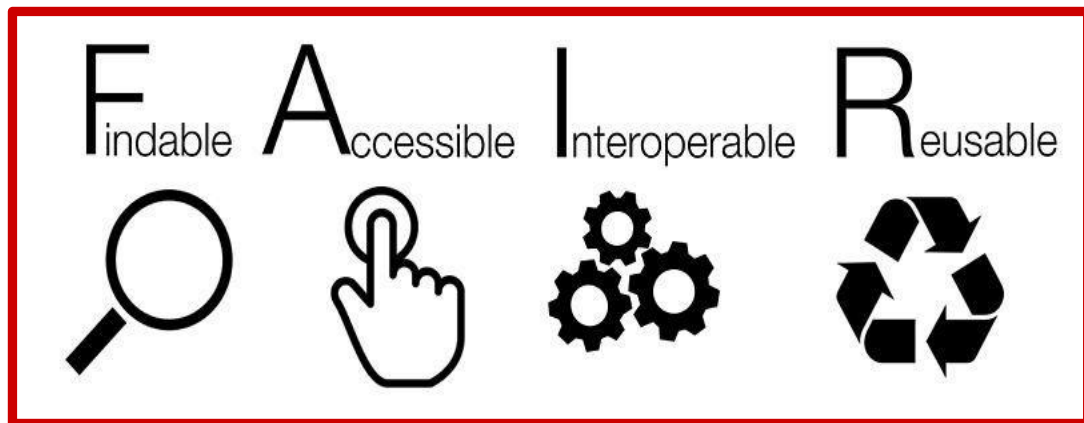
## Metadata for Data Reuse and Preservation

28 September 2022

ClfA Archaeological Archives Group

**Dr Katie Green, MClfA**

## Why talk about metadata?



High quality **explicit** metadata is integral for effective data **reuse** and **preservation**, enabling a digital archive to achieve its greatest **public value** in the future.

Image ©

[https://commons.wikimedia.org/wiki/File:FAIR\\_data\\_principles.jpg](https://commons.wikimedia.org/wiki/File:FAIR_data_principles.jpg)

## What does Metadata even mean?

- Data About Data  
~~Data about Data~~
- Documentation – Information
- Context

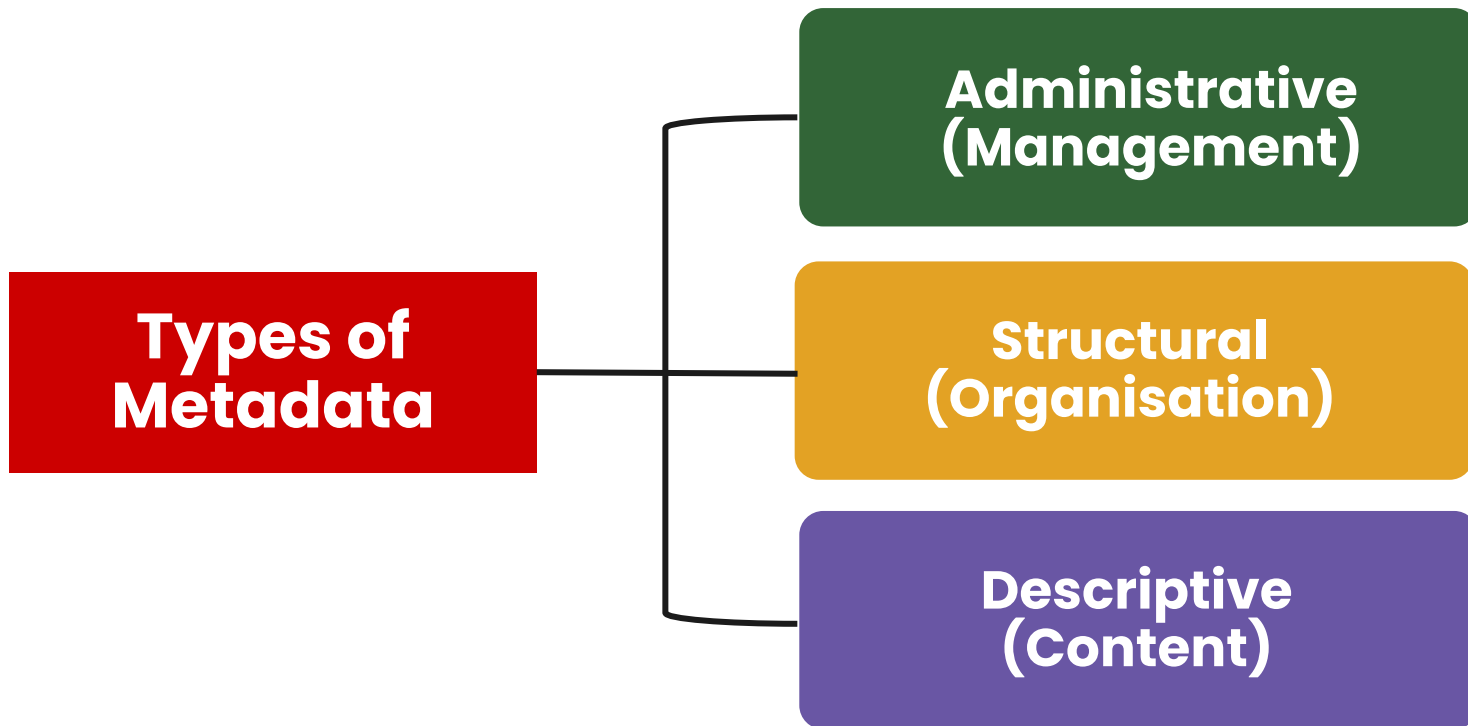


## Why is metadata important?

- Context
- Meaning
- Marketing



- Providing Access
  - But this means different things to different people



## Administrative Metadata



Created date	2018-03-01
--------------	------------

Copyright	MOLA
-----------	------

Creator	MOLA (AC photographer)
---------	------------------------

Sitecode	EX-PRO03
----------	----------

Accession Number	44
------------------	----

File Type	JPEG File Interchange Format 1.01
-----------	-----------------------------------

Checksum	663a5d5cb9b1091ebf8d8e53494063a4
----------	----------------------------------



## Structural Metadata



Collection

The Prittlewell princely burial

Related

Prittlewell image metadata (ADS\_raster\_metadata.csv).

Prittlewell image registry 02 (EX-PRO03\_image\_reg02.csv).

Documentation

Pg 57 of 'The Anglo-Saxon Princely Burial at Prittlewell, Southend-on-Sea.

## Descriptive Metadata



Title

A pair of wooden bottles with elaborate decorative metal rim mounts  
placed to the north of the coffin

Location

England, East of England, Southend-on-Sea, Prittlewell

Subject(s)

COMPOSITE (Material), VESSEL (Object)

Period

EARLY MEDIEVAL (England)

## But what is it?



## Types of Descriptive Metadata

- **What**

**What type of resource is it, and what is it about? What topics or themes does it cover?**

- **Where**

**Is the resource about a specific place?**

- **Who**

**Is the resource about a specific person?**

- **When**

**What time period does the resource cover?**

## What is this Digital Resource?

- What is it about?
- The Type of Resource
- The Subject or Content

**Five photographs of trenches excavated during archaeological field evaluations from the following ADS Collections:**

**Trench 1:** East Street, Olney, Milton Keynes.

**Trench 2:** Proposed Solar Development, Mill Farm, Grantham, Lincolnshire  
**Trench 3:** A380

**Trench 3:** South Devon Link Road, Kingskerswell, Devon

**Trench 4:** Abberton to Wormingford Pipeline route: Colchester Borough.

**Trench 5:** Land off Tatenhill Lane, Branston  
Archaeological Evaluation Report



## Where is this place?

- A place might be known by different names
- Place names are not unique
- Place names come and go
- Is the place historical, contemporary, current, mythological, or even fictional.



**Top Image:** View of the outer sarsen circle at Stonehenge (copyright James Davies / English Heritage).

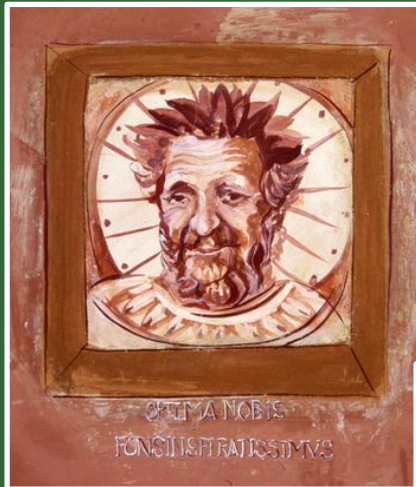
**Bottom image:** Doorway of one of the New Kingdom rock-cut tombs located to the W of Nubt at Naqada

## Who is it about?

- Alternative names
- The type of person
- Name preferences
- Name changes
- Any background information

### Clockwise from the top left:

Fresco portrait of experimental Archaeologist Peter Reynolds (from the Butser archive © Christine Shaw, Roger Hedge), Roman Coin depicting Emperor Constantine I (from the Cottam B archive © J Richards), A depiction of Apollo from a 2,000-year-old mosaic in Rome (© Day of Archaeology Archive), and A Black and White photograph of pottery specialist Alan Vince (from the Alan Vince archive © Joanna Vince).



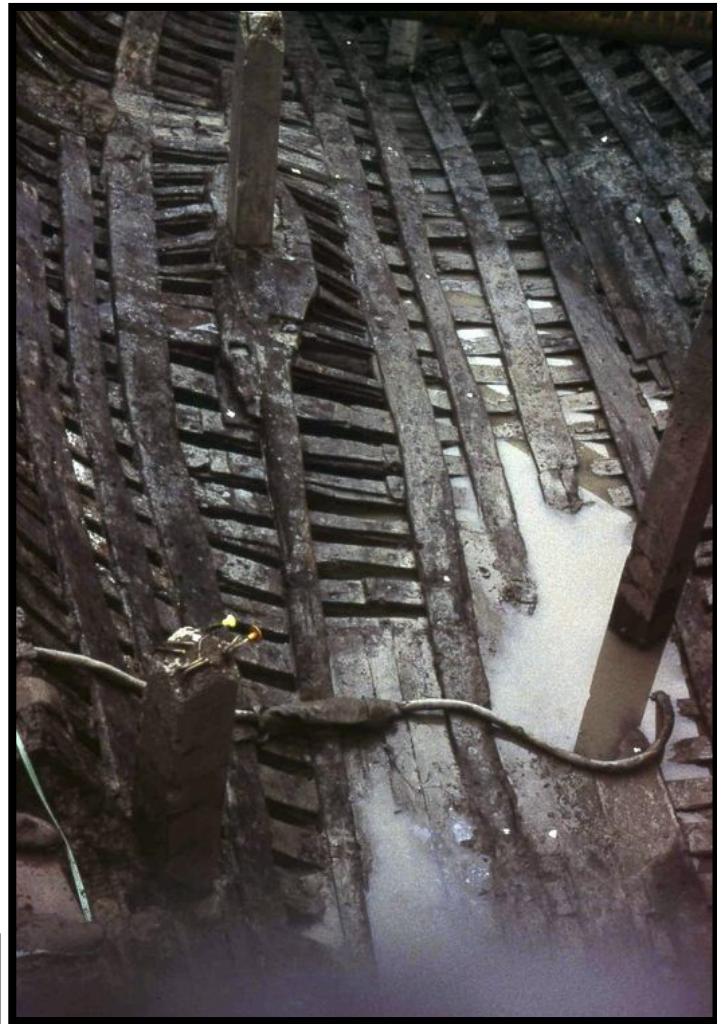


## When: Describing time

**Administrative:** Photograph, taken in **2013** and deposited as part of The Newport Medieval Ship Digital Archive.

**Descriptive:** Image shows a **15<sup>th</sup>-century** ship, post-excavation, when the assemblage of ship's timbers and associated artefacts was systematically cleaned, recorded, and analysed.

Image 467-25-036 taken 25/02/2013  
© Newport Museums and Heritage Service.



## Semantic Metadata

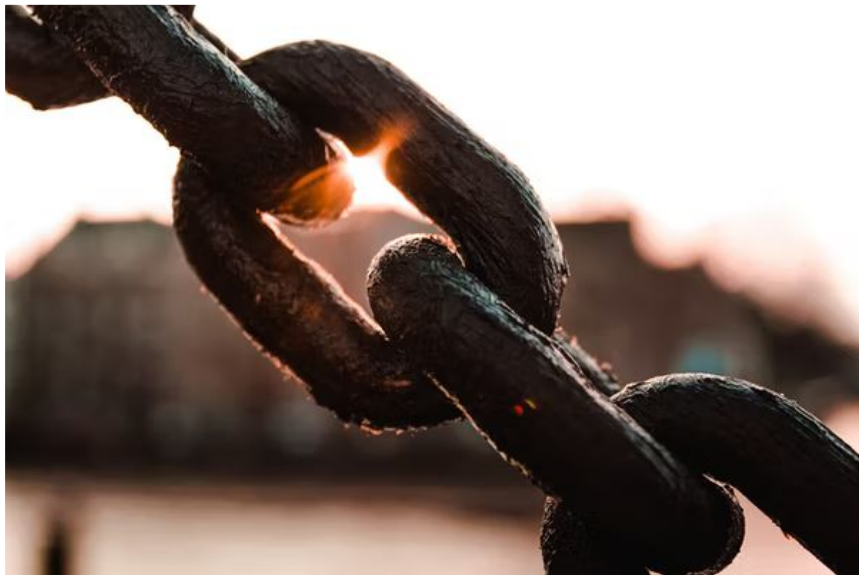


Photo by [Miltiadis Fragkidis](#) on [Unsplash](#)

- **Defining**
- **Building Trust**
  - Using standards
  - Being consistent
- **Connecting**
- **Sharing**



# ARIADNE Vocabulary Matching Tool

### Source Vocabulary

(FISH Archaeological Objects Thesaurus) ?

Q: brooch GO

Lamberton Moor Brooch LANGTON DOWN BROOCH

LONG BROOCH NAUHEIM DERIVATE BROOCH

PENANNULAR BROOCH PLATE BROOCH

POLDEN HILL BROOCH Rosette Brooch

CALVER BROOCH (Simple One Piece Brooch)

JEWELLERY → BROOCH *Brooch Spring Fibula*

Ornament often with a hinged pin and catch, worn fastened to clothing.

ANNULAR BROOCH BOW BROOCH

DRAGONESQUE BROOCH LONG BROOCH

PENANNULAR BROOCH PLATE BROOCH

### Target Vocabulary

(Getty Art & Architecture Thesaurus) ?

Q: brooch GO

bar brooches bar pins brooches disc brooches

penannular brooches ring brooches

pins (jewelry) → brooches

*breastpins broaches (jewelry) brooch*

Ornamental jewelry made in a variety of forms fastened by a pin. For decorative items, similar in appearance to a brooch, but attached to a garment with a spring fastening, use "clips (jewelry)."

### Concept Matching

BROOCH

close match

brooches

ADD MATCH ?

## Site Data from an Archaeological Watching Brief at Moorhouses Farm, Bransdale, North Yorkshire 2019

Charlie Morris, Matt Walker, Rebecca Jarosz-Blackburn, 2021. <https://doi.org/10.5284/1085028>. [How to cite using this DOI](#)

[Introduction](#)  
[Downloads](#)  
[Metadata](#)  
[Usage Statistics](#)

Data copyright © Stephen Potten  
unless otherwise stated

This work is licensed under a Creative  
Commons Attribution 4.0 International  
License.



**National Trust**

Primary contact  
AOC Archaeology Group  
The Raylor Centre  
James Street  
York  
YO10 3DW  
England  
Tel: +44 (0) 1904 413404

[Send e-mail enquiry](#)

Resource identifiers

ADS Collection: 3913  
DOI: <https://doi.org/10.5284/1085028>  
[How to cite using this DOI](#)



[University of York Legal Statements](#) | [Website Terms and Conditions](#) | [Cookies](#) | [Privacy Policy](#) | [Accessibility](#)

[Contact Us](#)



View of house, barn and trench looking south-east

### Introduction

This collection comprises the Digital Archive (images, a report and site records) from an archaeological watching brief commissioned by the National Trust and undertaken by AOC Archaeology Group at Moorhouses Farm, North Yorkshire. The watching brief was conducted during groundworks in December 2019.

A service trench was monitored but no archaeological features were encountered. Within the Farmhouse, the wall between the kitchen and ground floor living room was inspected after the removal of plaster. Two wooden blocks were observed which filled rectangular holes in the masonry wall; the holes extended the full width of the wall between the two rooms.

THE NATIONAL ARCHIVES

Menu

Search our records

[Sign in](#) [Register](#) [No items](#)

[Home](#) > [Discovery](#) > [Your search results](#) > 1003913

[Start new search](#) [Print](#) [Discovery help](#) [Bookmark](#)

You are in

- [3559 - Archaeology Data Service](#)
- [1004080 - Fieldwork Archives](#)
- This record (browse from here by [hierarchy](#))

### Catalogue description

## Site Data from an Archaeological Watching Brief at Moorhouses Farm, Bransdale, North Yorkshire 2019

Reference: 1003913

Title: Site Data from an Archaeological Watching Brief at Moorhouses Farm, Bransdale, North Yorkshire 2019

Description: This collection comprises a report, 66 images and 7 site records from an archaeological watching brief commissioned by the National Trust and undertaken by AOC Archaeology Group at Moorhouses Farm, North Yorkshire. The watching brief was conducted during groundworks in December 2019.

Note: Persistent Identifier: [DOI](#)

Date: 2020

Held by: [Archaeology Data Service](#)

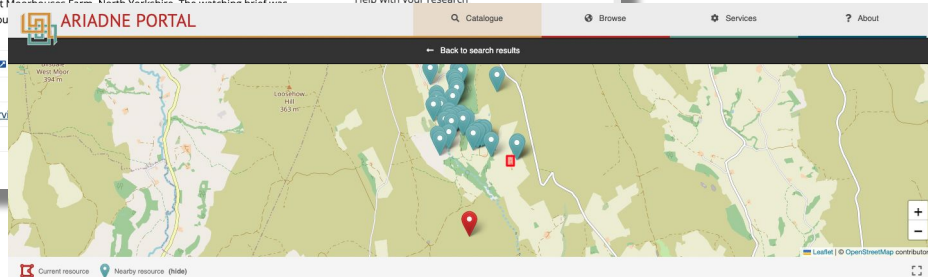
Language: English

Creator: Charlie Morris  
Matt Walker

This record is held by Archaeology Data Service

[See contact details](#)

Help with your research



## Site Data from an Archaeological Watching Brief at Moorhouses Farm, Bransdale, North Yorkshire 2019

### Description

This collection comprises a report, 66 images and 7 site records from an archaeological watching brief commissioned by the National Trust and undertaken by AOC Archaeology Group at Moorhouses Farm, North Yorkshire. The watching brief was conducted during groundworks in December 2019 and no archaeological features were encountered.

### Metadata

Original ID: 1003913

Landing page: <https://doi.org/10.5284/1085028>

Language: English

Resource type: Fieldwork archive

### Resource links

[View resource at provider](#)

[Json](#) [Xml](#) [Rdf](#) [Cite](#) [Report an issue](#)

### Resource is part of

ADS Archives

### Thematically similar

Thematically similar resources based on terms in common of:

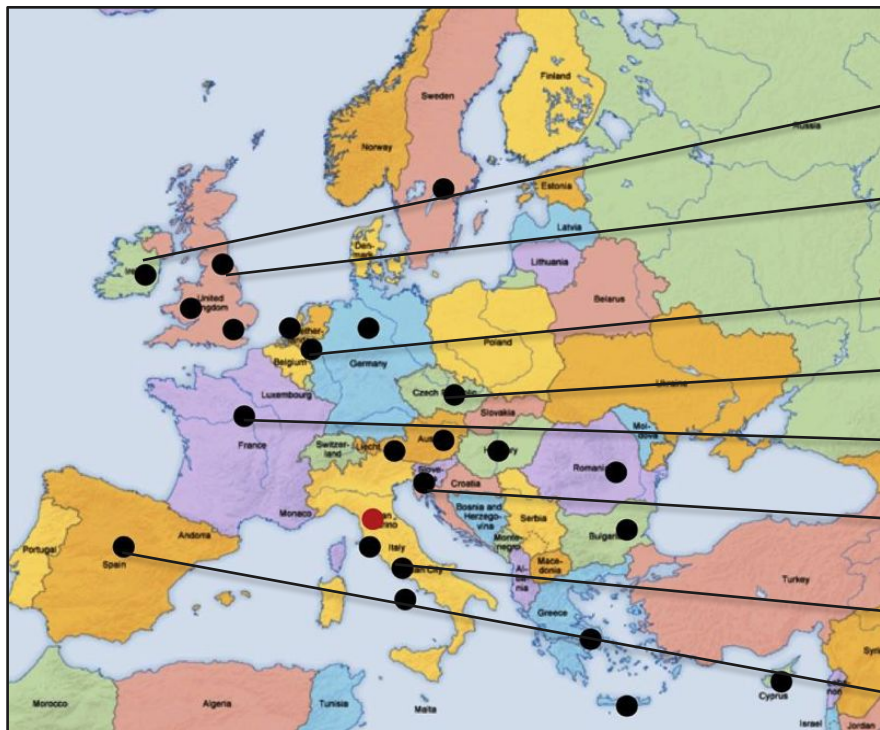
Subject & Time period

[Cattewater Wreck Archive](#)

[Wearmouth and Jarrow: Northumbrian Monasteries in an Historic Landscape](#)

[Northumbrian Historic Landscape Character Assessment](#)

## Our metadata to the world



Archaeological Survey of Ireland, 141,000 records

ADS: 60,000 grey literature reports, over 2000 project archives; 1.4 million records

DANS – 40,000+ fieldwork reports and archives

ARUP (Czech Republic); 230,000 records

INRAP: 27,000 fieldwork reports

ZRC-SAZU (Slovenia), 11,000 site records

FASTI online: 12,000 excavation reports of 3300 sites in 14 countries

CENIEH: 1000 reports



**Public Benefit**

**Legacy**

**Opportunity**

**Innovation**



# What if?...

**All that was left was the record**



*Image of empty cabinets at Lviv National Museum  
from BBC News at [bbc.co.uk/news](https://www.bbc.co.uk/news)*

# THANK YOU



## **Archaeology Data Service**

Department of Archaeology

University of York

The King's Manor

Exhibition Square

York, YO1 7EP



**[www.archaeologydataservice.ac.uk](http://www.archaeologydataservice.ac.uk)**



**[help@archaeologydataservice.ac.uk](mailto:help@archaeologydataservice.ac.uk)**