



***Staffordshire Hoard
Catalogue***

**The Catalogue
Part 1: Pommels and
sword-rings**



**Text and Drawings: Chris Fern
Photographs: Aleksandra Osinska,
Lucy Martin and Guy Evans**

2017

This catalogue forms part of
The Staffordshire Hoard: an Anglo-Saxon Treasure
edited by C. Fern, T. Dickinson and L. Webster
and published by the Society of Antiquaries of London

Introduction

This pdf catalogue provides text entries, together with photographs for the majority of the objects (scale 1:1 in most instances). In addition, line drawings accompany many of those with complex decoration, which offer interpretations of the art. The full catalogue for each item can be found in the database, along with more photos in many cases.

In each entry the catalogue number is in **bold** font, with the original [*K-number*] given in italics and square brackets. Where a catalogue entry is composed of more than one *K-number*, in the database all the details pertaining to it are attached to the first *K-number* in the sequence. (Additional images of individual *K-number* fragments/objects within groups will be found in the specific *K-number* database entry.) The weight measurement for catalogue entries formed of more than one *K-number* fragment/object is an aggregate of all the pieces that make up the whole.

The *Note* entry provides select details of other fragments/objects with which the piece was found, but it was not practical to do this for all *K-number* fragments/objects, where they had been parts of large fragment groups (e.g. soil blocks), or where the catalogue entry comprises many fragments: full details of all associations between fragments/objects are in e-Tables 2 and 3.

The *Grid location* entry gives information about the original find position of fragments/objects (by *K-number*) found within the 1m x 1m grid established during the Birmingham Archaeology excavations (2009). The finds made by Archaeology Warwickshire (2012) have also been related to this grid, but note, as these finds came from backfilled and ploughed soil, they are not directly comparable to the former. The alpha-numeric prefix given to finds relates to the several recording systems used for the different phases of recovery prior to the establishing of the *K-number* system by Kevin Leahy, and are as follows:

TH ('Terry Herbert'): the number series originally applied to the metal detectorist's finds (these have no locations).

SCC: Staffordshire County Council emergency test pit.

BA: Birmingham Archaeology excavation.

All information and images are copyright of Barbican Research Associates Ltd unless otherwise stated.



1 Photography Aleksandra Osinska, Cotswold Archaeology. Drawing Chris Fern.

1 [K280]

POMMEL IN GOLD OF COCKED-HAT FORM WITH FILIGREE ANIMAL ORNAMENT. Constructed of sheet metal over a cast copper-alloy core. Triple rivet-housings each end; four gold rivets remain (two full length or nearly so). Plain sheet cap over the apex. *Style II*: animal ornament each side and on the shoulders. The sides show the same motif of a pair of interlacing zoomorphs in a confronted attitude, their necks twisted together, with biting jaws (only small details in the corners differ each side). The shoulders have identical single creatures (but rotated 180 degrees, relative to each other). *Filigree*: Style II ornament in triple-strand beaded wire; each side the design is raised on a thin sheet lattice, cut-out to match the pattern; edges framed by double/triple beaded wires; granules (mostly collared) for the eyes of the creatures; rivet-housings covered with beaded wire, including collars at rivet-holes; wire at base trimmed flat on underside, to sit flush on hilt-plate/guard. *Interior*: the core has a concave underside. *Wear/marks*: light wear overall, moderate at ends. Apex dented. *Set*: probably a suite with hilt-collar pair 87 and 88.

(Grid location: [K280] TH168, no location)

L. 45mm; W. 19mm; H. 16.5mm; Th. edge 2mm; Wt 32.74g; X-ray: L34

(Note: the photo taken before conservation shows a small fragment of metal in attached soil, probably silver sheet, but it was no longer with the object when it was recorded.)



2 Photography Lucy Martin, Cotswold Archaeology. Drawing Chris Fern.

2 [K457]

POMMEL IN GOLD OF COCKED-HAT FORM WITH FILIGREE ANIMAL ORNAMENT. Constructed of sheet metal over a cast copper-alloy core. Paired rivet-housings each end; no rivets. Plain sheet cap over the apex. *Style II/interlace*: animal ornament each side and on one shoulder. The design one side comprises a quartet of serpents forming a central quatrefoil knot; the other side shows two affronted zoomorphs with interlacing bodies and jaws. One shoulder also shows a serpent; the other shoulder has non-zoomorphic interlace. *Filigree*: Style II/interlace in triple-strand beaded wire; each side the design is raised on a thin sheet lattice, cut-out to match the pattern; edges framed by double/triple beaded wires; collared granules for the eyes of the serpents; rivet-housings covered with beaded wire, including collars at rivet-holes; wire at base trimmed flat on underside, or flattened by contact with hilt-plate/guard. *Interior*: a fragment of iron tang remains inside the concave core. *Wear/marks*: heavy wear overall, some wires lost; but the flattening of the filigree both sides, below the apex (with striations and edge-wire damage), was possibly caused by a tool (?tongs). *Set*: probably a suite with hilt-collar pair 85 and 86.

(Grid location: [K457] TH224, no location)

L. 42.5mm; W. 14.5mm; H. 15.5mm; Th. edge 1.5mm; Th. core edge 2mm; Wt 15.33g; X-ray: L33



3 Photography Lucy Martin, Cotswold Archaeology. Drawing Chris Fern.

3 [K1030]

POMMEL IN GOLD OF COCKED-HAT FORM WITH FILIGREE ANIMAL ORNAMENT. Torn open, one half pushed in, and missing its core. Constructed of sheet metal. Paired rivet-housings each end; no rivets. Plain sheet cap over the apex originally (torn). *Style II*: animal ornament each side and on the shoulders. One side shows two affronted zoomorphs with interlacing bodies and jaws; the other side has two similar creatures in a different interlacing scheme. The shoulders have identical single creatures (but rotated 180 degrees, relative to each other). *Filigree*: *Style II* in triple-strand beaded wire; each design is raised on a thin sheet lattice, cut-out to match the pattern; edges framed by double/triple beaded wires; herringbone pattern (formed of two-ply twisted wires) covers the rivet-housings. *Interior*: sheet join for rivet-housings visible one end. *Wear/marks*: heavy wear at apex, edges and ends. Filigree wire at base flattened on underside in places by contact with hilt-plate/guard.

(Grid location: [K1030] BA0392, grid O10)

L. 29mm; W. 23mm; H. 13mm; Th. edge 1.5mm; Wt 8.14g; X-ray: L34



4 Photography Aleksandra Osinska, Cotswold Archaeology. Drawing Chris Fern.

4 [K455]

POMMEL IN GOLD OF COCKED-HAT FORM WITH FILIGREE ANIMAL ORNAMENT. One side edge pulled outwards. Constructed of sheet metal. Paired rivet-housings each end; no rivets. Plain sheet cap over the apex. *Style II*: animal ornament each side and on the shoulders. The sides show identical designs of four interlacing zoomorphs, some sharing head/jaw and body parts, and forming a central quatrefoil knot. The shoulders show identical single creatures with oval heads (but rotated 180 degrees, relative to each other). *Filigree*: Style II in triple-strand beaded wire on flat sheet; edges framed by double/triple beaded wires; herringbone pattern (formed of two-ply twisted wires) covers the rivet-housings, with beaded wire collars for the rivet-holes. *Interior*: remains of a light-brown beeswax core-filler at the apex. *Wear/marks*: heavy wear overall, the cap sheet partly worn away, and with small dents, but the flattening of the filigree at the centre on both sides was possibly caused by a tool (?tongs). Cut mark on the spread basal edge (?levered). Filigree wire at the base flattened on the underside by contact with a hilt-plate/guard.

(Grid location: [K455] TH234, no location)

L. 40mm; W. 16mm; H. 17mm; Th. edge 1.5mm; Wt 14.49g; X-ray: L2, L7, L8, L29



5 Photography Aleksandra Osinska, Cotswold Archaeology. Drawing Chris Fern.

5 [K309]

POMMEL IN GOLD OF COCKED-HAT FORM WITH FILIGREE ANIMAL ORNAMENT. Missing one end, one side slightly bowed out, and without its core. Constructed of sheet metal. Paired rivet-housings at the remaining end; no rivets. Plain sheet cap over the apex. *Style II*: animal ornament on the sides and shoulders. Sides have similar designs of four interlacing zoomorphs that share bodies, forming a central quatrefoil knot. Shoulders have identical single serpents with four-twist interlace bodies (but rotated 180 degrees, relative to each other). *Filigree*: Style II in triple-strand beaded wire; edges framed by double/triple beaded wires; on the sides the designs are mounted on additional sheet backings that were repoussé worked (or die-impressed with the pattern) and then lattice cut; granules for the eyes of the serpents; rivet-housings covered with beaded wire; wire at base trimmed flat on underside, or flattened by contact with the hilt-plate/guard. *Interior*: visible joins between sides, ends and apex/shoulders. Small 'X' incised one side. *Wear/marks*: light wear overall, moderate at ends. Small dents on apex. *Set*: probably a suite with hilt-collar pair **89** and **90**.

(Grid location: [K309] TH164, no location)

L. 46mm; W. 12.5mm; H. 20mm; Th. edge 1mm; Wt 11.30g; X-ray: L31, L41

(Note: from soil in interior: three fragments of silver-gilt sheet, **606**: [K1850], one garnet gem-setting, **618**: [K1851])



6 Photography Lucy Martin, Cotswold Archaeology.

6 [K558]

POMMEL IN GOLD OF COCKED-HAT FORM WITH FILIGREE ANIMAL ORNAMENT. One side pushed in slightly, the apex dented and flattened, and without its core. Constructed of sheet metal. Paired rivet-housings each end; no rivets. Plain sheet cap over the apex. *Style II/interlace*: animal ornament one side, showing two affronted zoomorphs with interlacing bodies and jaws, forming a central quatrefoil knot; the other side has irregular non-zoomorphic interlace, including a single Stafford knot. Shoulders have non-zoomorphic interlace. *Filigree*: *Style II/interlace* in triple-strand beaded wire on flat sheet; edges framed by double/triple beaded wires; herringbone pattern (formed of two-ply twisted wires) covers the rivet-housings; beaded wire collars for rivet-holes; the sheet body of the pommel lips under the wire at the basal edge. *Interior*: sheet join at apex. *Wear/marks*: light wear overall, moderate at edges.

(Grid location: [K558] TH031, no location)

L. 44mm; W. 13mm; H. 17mm; Th. edge 1.5mm; Wt 14.19g; X-ray: L1



7 Photography Lucy Martin, Cotswold Archaeology. Drawing Chris Fern.

7 [K664]

POMMEL IN GOLD OF COCKED-HAT FORM WITH FILIGREE ANIMAL ORNAMENT. Twisted, and without its core. Constructed of sheet metal. Paired rivet-housings each ends; no rivets. Plain sheet cap over the apex. *Style II/interlace*: animal ornament one side and on both shoulders. The side shows two affronted and interlacing zoomorphs, which share body elements. The other side has irregular non-zoomorphic interlace. Shoulders have identical single knotted serpents (but rotated 180 degrees, relative to each other). *Filigree*: Style II/interlace in triple-strand beaded wire on flat sheet; edges framed by double/triple beaded wires; granules for the eyes of the serpents; incised layout marks are visible on the side with the interlace design; herringbone banding (formed of two-ply twisted wires), separated by beaded wires, covers the rivet-housings; beaded wire collars for the rivet-holes separated by figure-of-eights; the sheet body of the pommel lips under the wire at the basal edge. *Interior*: no joins visible, apex obscured (by soil that is irremovable). *Wear/marks*: heavy wear overall, with missing and unseated wires at the ends. Shallow dents to the apex.

(Grid location: [K664] TH075, no location)

L. 45mm; W. 11.5mm; H. 18mm; Th. edge 1mm; Wt 13.20g (incl. small amount of soil); X-ray: L32



8 Photography Aleksandra Osinska, Cotswold Archaeology. Drawing Chris Fern.

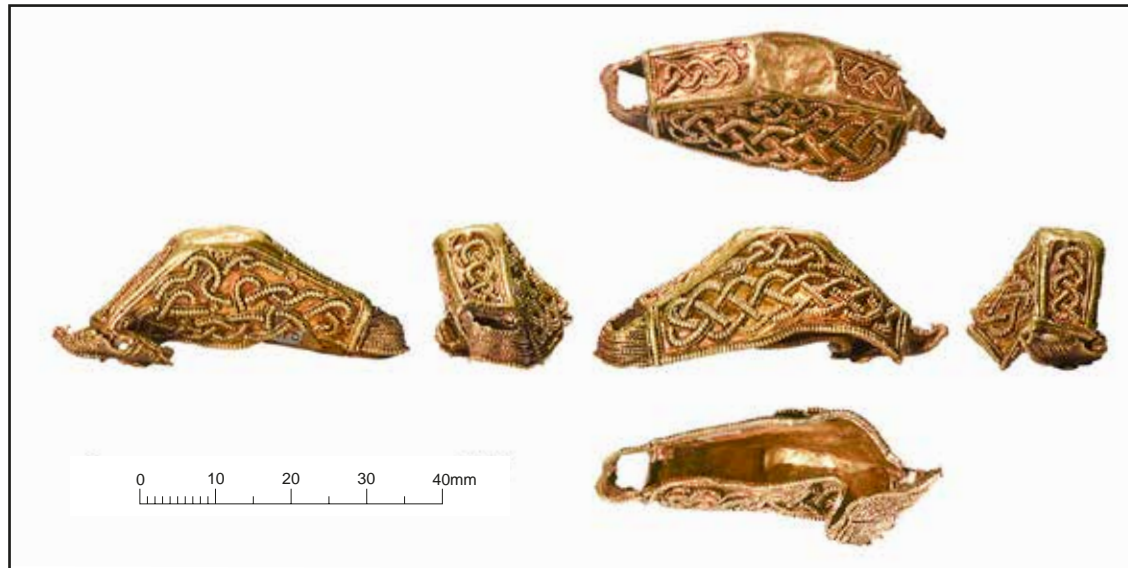
8 [K686]

POMMEL IN GOLD OF COCKED-HAT FORM WITH FILIGREE ANIMAL ORNAMENT. Sides pinched together, one end pushed into the interior, and without its core. Constructed of sheet metal. Paired rivet-housings each end; no rivets. Plain sheet cap over the apex. *Style II*: animal ornament each side. Both designs are similar and show two affronted zoomorphs with interlacing bodies and jaws; one side the creatures' jaws form loops and interlock with a separate central element; triquetra knots occupy the corners on the same side. *Filigree*: *Style II* in triple-strand (formed of a central beaded wire flanked by thinner two-ply twisted wires) on flat sheet; the shoulders are filled with C-scrolls in beaded wire, and single scrolls also accompany the *Style II* designs, some forming eyes to the creatures; edges framed by beaded wire with an inner border of herringbone band (of two-ply twisted wires, with a thinner beaded wire innermost); herringbone pattern also covers the rivet-housings. *Interior*: no sheet joins visible. *Wear/marks*: moderate wear overall, heavy at the ends, but the flattening of the filigree near the apex one side was possibly caused by a tool (?tongs). On one side several incised marks are on the sheet backing under the filigree (they are not layout marks). Filigree wire at the base flattened in places on the underside by contact with hilt-plate/guard.

(Grid location: [K686] TH069, no location)

L. 43mm; W. 14mm; H. 19.5mm; Th. edge 1mm; Wt 8.57g; X-ray: L1

(Note: from soil in interior: one gold nail, 658: [K1918], one fragment of silver-gilt reeded strip, 613: [1919])



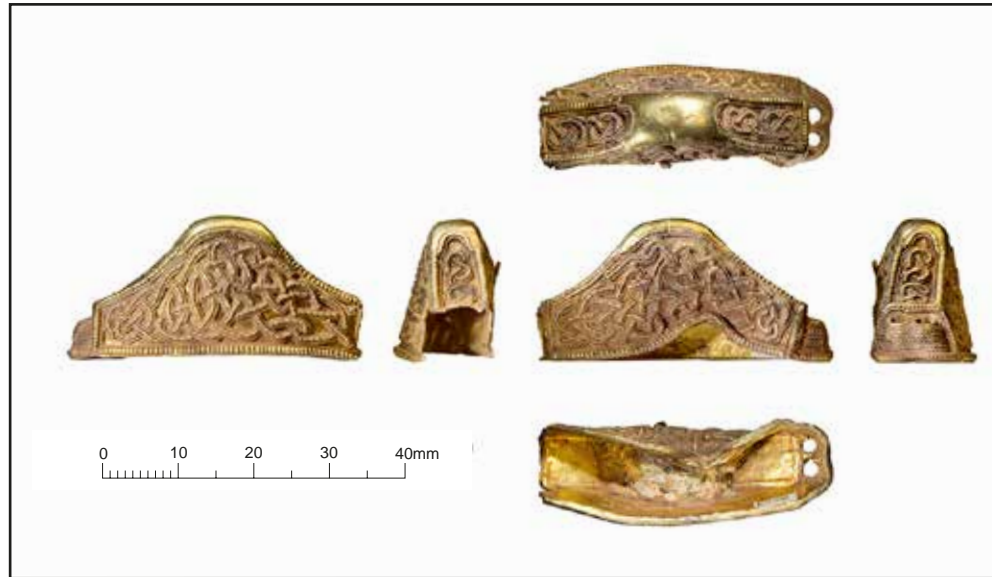
9 Photography Lucy Martin, Cotswold Archaeology.

9 [K375]

POMMEL IN GOLD OF COCKED-HAT FORM WITH FILIGREE ANIMAL ORNAMENT. One end and apex flattened, sides misshapen, and without its core. Constructed of sheet metal. Paired rivet-housings each end; no rivets. Plain sheet cap over the apex. *Style II/interlace*: animal ornament both sides. One side shows a knotted serpent above a band of regular non-zoomorphic interlace (a possible layout mark is behind the serpent and a sheet crease behind the interlace); the other side has two affronted zoomorphs with interlacing bodies and jaws. Shoulders have identical interlace designs (but pattern rotated 180 degrees). *Filigree*: Style II/interlace in triple-strand beaded wire on flat sheet; edges framed by double/triple beaded wires; a granule was used for the eye of the serpent; annulets combine with the Style II design one side; herringbone pattern (formed of two-ply twisted wires) covers the rivet-housings. *Interior*: multiple sheet joins and several incised lines. *Wear/marks*: heavy wear at apex, edges and ends, cap almost completely worn away. Filigree wire at base flattened on underside one end by contact with hilt-plate/guard.

(Grid location: [K375] TH134, no location)

L. 46mm; W. 18mm; H. 16mm; Th. edge 1mm; Wt 11.33g; X-ray: L32



10 Photography Aleksandra Osinska, Cotswold Archaeology.

10 [K359]

POMMEL IN GOLD OF COCKED-HAT FORM WITH FILIGREE ANIMAL ORNAMENT. Missing one end, one side pushed in with a dent on the basal edge (?levered). Made of sheet metal. Paired rivet-housings at the remaining end; no rivets. Plain sheet cap over the apex. *Style II/interlace*: animal ornament both sides: one side shows two affronted zoomorphs with interlacing bodies and jaws; the other is filled with interlace formed from the body and jaw elements of a single creature. Shoulders have identical double Stafford knots (but pattern rotated 180 degrees). *Filigree*: Style II/interlace in triple-strand beaded wire on flat sheet; edges framed by double/triple beaded wires; granules for eyes of creatures; rivet-housings covered with herringbone pattern (formed of two-ply twisted wires), with beaded wire collars for the rivet-holes; the sheet body of the pommel lips under the wire at the basal edge. *Interior*: sheet join lengthways on one shoulder. Remains of an off-white calcite core-filler at apex. *Wear/marks*: light wear overall, moderate at ends and apex; but the flattening of the filigree both sides and scratches on the apex were possibly caused by a tool (?tongs).

(Grid location: [K359] TH121, no location)

L. 39mm; W. 13.5mm; H. 19.5mm; Th. edge 1–1.5mm; Wt 10.37g; X-ray: L31



11 Photography Lucy Martin, Cotswold Archaeology. Drawing Chris Fern.

11 [K585, K714]

POMMEL IN GOLD OF COCKED-HAT FORM WITH FILIGREE INTERLACE AND SERPENT ORNAMENT. Found in three fragments, badly misshapen, and without its core. Constructed of sheet metal. Paired rivet-housings each end; one set is torn open; no rivets. Plain sheet cap over the apex (torn). *Style II/interlace*: similar design each side of a band of linked Stafford knots, with centrally a serpent with a knotted body, and below a band of four-twist interlace. Shoulders have bands of five-twist interlace (but pattern rotated 180 degrees). *Filigree*: Style II/interlace in triple-strand beaded wire on flat sheet; edges framed by double/triple beaded wires; herringbone pattern (formed of two-ply twisted wires) covers the rivet-housings, with beaded wire collars for the rivet-holes; the sheet body of the pommel lips under the wire at the basal edge. *Interior*: multiple sheet joins at the sides and remaining end, and a reinforcing patch at the apex. *Wear/marks*: moderate wear at edges, ends and near the apex, which is also dented.

(Grid location: [K585] TH022, [K714] BA0198, no locations)

L. 38.5mm; W. 10.5mm; H. 19mm; Th. edge 1–1.5mm; Wt 9.04g; X-ray: L117

(Note: fragment [K714] recovered on site with gold mount [K5] from pommel 74)



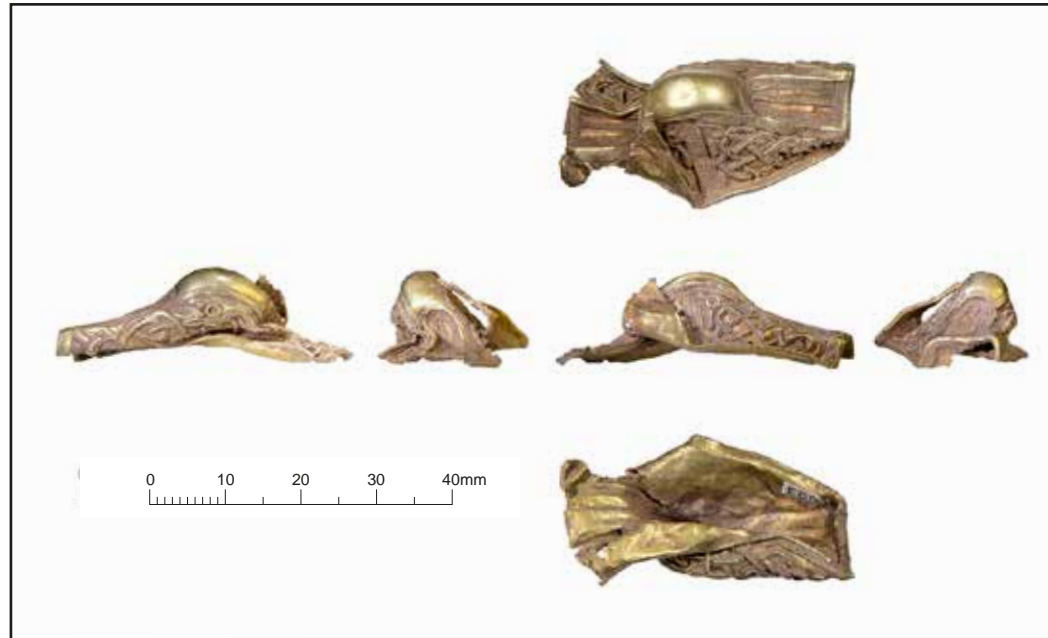
12 Photography Aleksandra Osinska, Cotswold Archaeology. Drawing Chris Fern.

12 [K669]

POMMEL IN GOLD OF COCKED-HAT FORM WITH FILIGREE ANIMAL ORNAMENT. Slightly twisted, and without its core. Constructed of sheet metal. Paired rivet-housings each end; no rivets. Plain sheet cap over the apex. *Style II*: animal ornament each side. Both show similar designs of two zoomorphs, addorsed, but in separate panels, each with an interlaced body and jaw; one side an additional central panel holds a coiled serpent. Shoulders have identical single creatures (but rotated 180 degrees, relative to each other), each with a simple head/jaw biting its serpent-like body. *Filigree*: Style II in triple-strand beaded wire (the thinner flanking wires are spiral beaded) on flat sheet; edges framed in the same; panels separated by a herringbone band one side (formed of two-ply twisted wires), and by combination beaded and twisted wires on the other (forming herringbone-with-spine); annulets for eyes of larger creatures; herringbone pattern also covers the rivet-housings, with beaded wire collars for the rivet-holes; wire at base trimmed flat on underside, or flattened by contact with a hilt-plate/guard. *Interior*: no sheet joins visible. *Wear/marks*: light wear overall; the flattening of the filigree near the apex one side is from an impact (?recent) or possibly from a tool (?tongs). Apex dented.

(Grid location: [K669] TH079, no location)

L. 46mm; W. 12mm; H. 16.5mm; Th. edge 1.5mm; Wt 10.85g; X-ray: L1



13 Photography Aleksandra Osinska, Cotswold Archaeology.

13 [K693]

POMMEL IN GOLD OF COCKED-HAT FORM WITH FILIGREE SERPENT INTERLACE. Missing both ends and its core, sides squashed and torn. Constructed of sheet metal, with an additional plain sheet cap over the apex. *Style II/interlace*: different designs each side (both partly obscured). One side is divided into two panels, each holding an interlaced serpent, the creatures confronted. The other side has interlace, though the filigree annulet at the top of the design suggests an 'eye' and a certain quasi-zoomorphic character. *Filigree*: Style II/interlace in triple-strand beaded wire on flat sheet; herringbone bands (formed of two-ply twisted wires) divide and partly frame the panelled side, with thicker beaded wire at the edges; incised layout marks are visible under the (unobscured) filigree serpent; the annulet forming the 'eye' is of beaded wire; the shoulders are also decorated with herringbone banding. *Interior*: sheet joins lengthways on both shoulders. *Wear/marks*: light wear overall, moderate at edges. Apex dented.

(Grid location: [K693] TH044, no location)

L. 37.5mm; W. 17mm; H. 16.5mm; Th. edge 1mm; Wt 6.69g; X-ray: L2, L9



14 Photography Lucy Martin, Cotswold Archaeology. Drawing Chris Fern.

14 [K353]

POMMEL IN GOLD OF COCKED-HAT FORM WITH FILIGREE SERPENT ORNAMENT. Constructed of sheet metal over a cast copper-alloy core. Paired rivet-housings each end; parts of two gold rivets and one of copper alloy (possibly indicating a repair). Plain sheet cap over the apex. *Style II*: similar design each side, of serpents concealed in semi-regular interlace. Shoulders also have serpent interlace. *Filigree*: Style II in triple-strand beaded wire on flat sheet; edges framed by beaded wire; herringbone pattern (formed of two-ply twisted wires) covers the rivet-housings, with beaded wire collars for the rivet-holes. *Interior*: core underside concave. *Wear/marks*: heavy wear overall, the cap sheet torn and partly worn away, and some wires lost; but some of the wire flattening was probably caused by a tool (?tongs) that has left impressions below the apex both sides.

(Grid location: [K353] TH126, no location)

L. 48mm; W. 17.5mm; H. 20.5mm; Th. edge 1.5mm; Wt 32.21g; X-ray: L11



15 Photography Aleksandra Osinska, Cotswold Archaeology. Drawing Chris Fern.

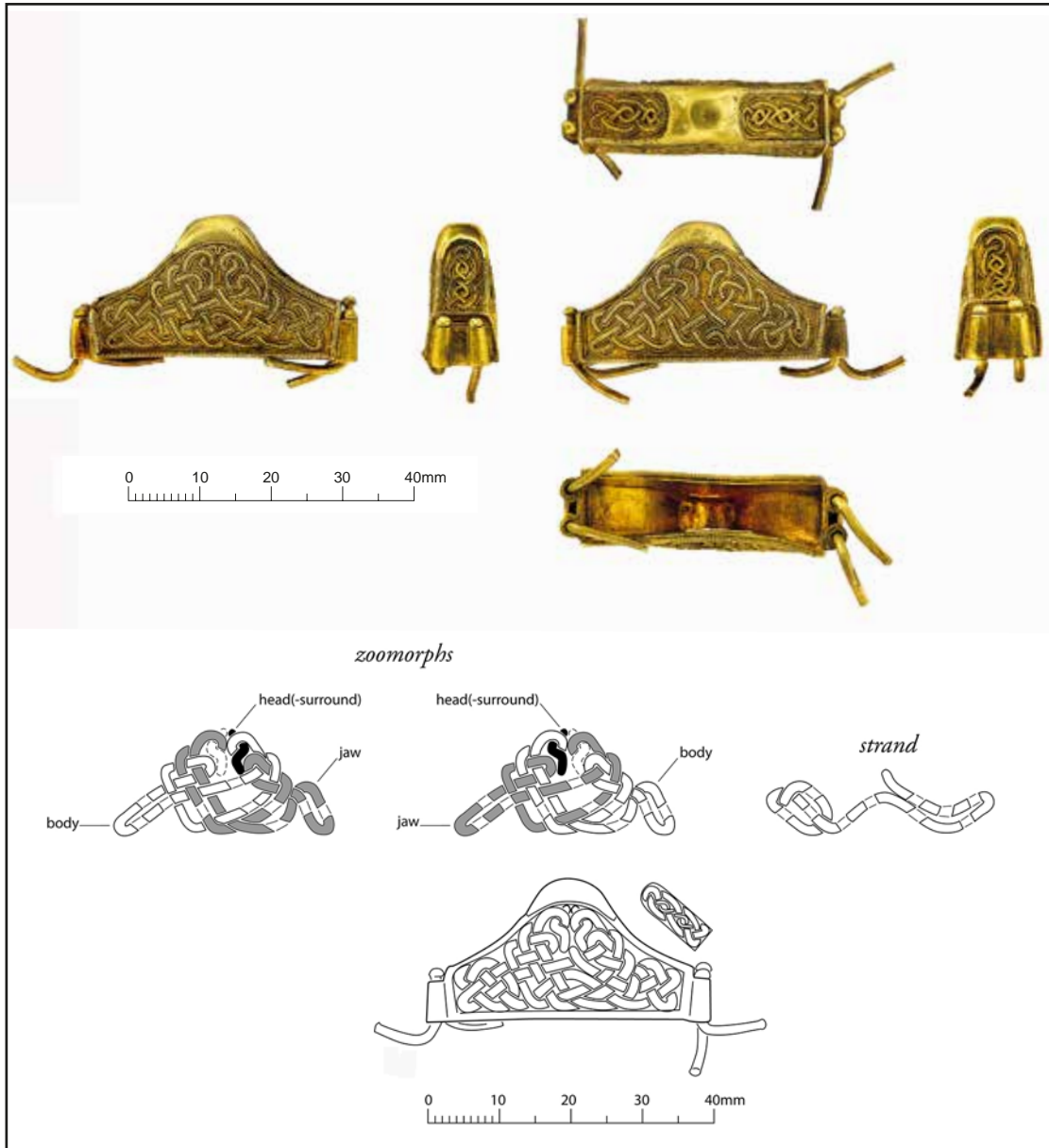
15 [K287]

POMMEL IN GOLD OF COCKED-HAT FORM WITH FILIGREE SERPENT ORNAMENT. Constructed of sheet metal. Single rivet-housing each end; no rivets. Plain sheet cap over the apex. *Style II*: similar design each side, of a serpent with a knotted body; one side with a ring. *Filigree*: Style II in triple-strand beaded wire; the thick framing comprises bands of herringbone-with-spine (formed of a pair of two-ply twisted-beaded wires with a central plain wire), flanked by further plain wires and normal herringbone banding (formed of two-ply twisted wires); a band of herringbone-with-spine also divides double lines of collared granules on each shoulder; the sheet backing both sides shows light repoussé working (from the front) around the design; granules for the eyes of the serpents; standard herringbone pattern covers the rivet-housings, with beaded wire collars at the rivet-holes; the sheet body of the pommel lips under the wire at the basal edge. *Interior*: sheet joins at shoulders. Wear/marks: heavy wear to apex, edges and ends, cap sheet ragged and flattened.

(Note: from soil in interior: two fragments [K1826] of pommel 63)

(Grid location: [K287] TH152, no location)

L. 42mm; W. 13mm; H. 15.5mm; Wt 7.84g; Th. edge 1.5mm; X-ray: L30, L41



16 [K1200]

POMMEL IN GOLD OF COCKED-HAT FORM WITH FILIGREE ANIMAL ORNAMENT. Constructed of sheet metal, but without its core. Paired rivet-housings of plain sheet each end; four gold rivets, full length, bent (L. est. 18–19mm). Plain sheet cap over the apex. *Style II/interlace*: animal ornament each side, with similar designs based on the motif of two affronted zoomorphs; the creatures have interchangeable body and jaw elements in an asymmetrical interlace; together with a third non-zoomorphic interlace strand. Shoulders have identical regular interlace (but pattern rotated 180 degrees). *Filigree*: Style II/interlace in triple-strand beaded wire on flat sheet; shoulder interlace includes plain wire; edges framed by double/triple beaded wires. *Interior*: apex reinforced with a sheet patch; end/shoulder joins reinforced with short lengths of beaded wire. *Wear/marks*: light wear overall. Apex dented. Filigree wire flattened on underside of base from contact with a hilt-plate/guard.

(Grid location: [K1200] BA0320, grid J8)

L. 40mm; W. 11mm; H. 20mm; Th. edge 1.5mm; Wt 15.90g

16 Photography Guy Evans, Barbican Research Associates.
Drawing Chris Fern.



17 Photography Aleksandra Osinska, Cotswold Archaeology. Drawing Chris Fern.

17 [K1097]

POMMEL IN GOLD OF COCKED-HAT FORM WITH FILIGREE ANIMAL ORNAMENT. Missing one end, sides misshaped, and one side partly detached along an original joint. Constructed of sheet metal. Paired rivet-housings at the remaining end; two gold rivets, full length, bent. Plain sheet cap over the apex. *Style II*: different animal ornament each side: one design shows four interlaced zoomorphs (forming a central saltire); the other has two affronted creatures. *Filigree*: *Style II* in triple-strand beaded wire; each side the design is raised on a thin sheet lattice, cut-out to match the pattern; sides framed by herringbone banding (formed of two-ply twisted wires) with thicker beaded wire at the edges; herringbone pattern also fills the shoulders and covers the rivet-housing, with a figure-of-eight collar for the rivet-holes. *Interior*: remains of wood at the apex. *Wear/marks*: light wear overall, moderate at the apex and edges. Small tears/holes in sheet.

(Grid location: [K1097] BA0179, grid L10)

L. 37.5mm; W. 17mm; H. 16.5mm; Th. edge 1mm; Wt 6.69g; X-ray: L2, L9

(Note: found on site with one fragment of silver reeded strip, **613**: [K1091], and five fragments of die-impressed sheet, **606**: [K1091]. From soil in interior: one fragment of gold, **682**: [1953]; one fragment of silver, **690**: [1954])



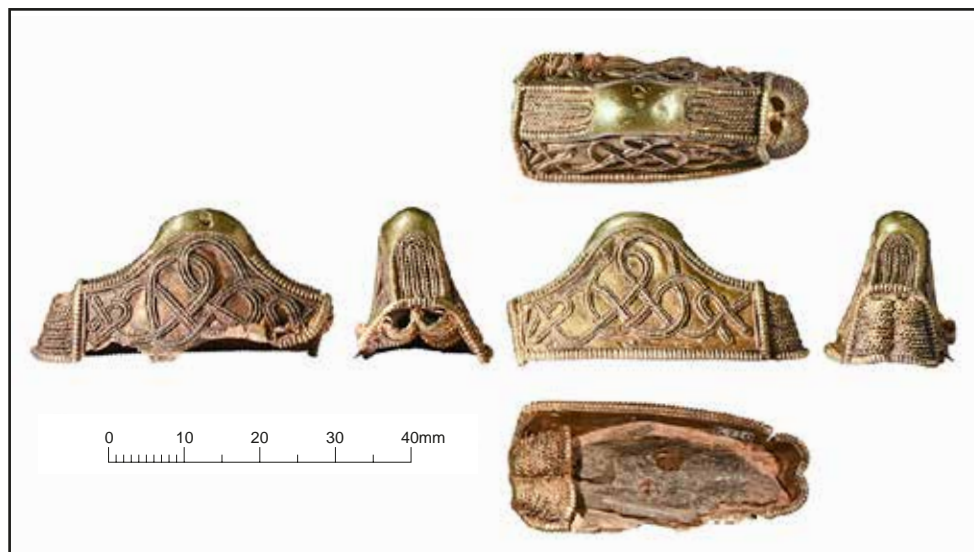
18 Photography Guy Evans, Barbican Research Associates. Drawing Chris Fern.

18 [K393]

POMMEL IN GOLD OF COCKED-HAT FORM WITH FILIGREE ANIMAL ORNAMENT. One end torn and pushed in, and without its core. Constructed of sheet metal. Paired rivet-housings each end; no rivets. Plain sheet cap over the apex. *Style II*: almost identical animal ornament each side, of two affronted zoomorphs with interlacing bodies and jaws forming regular interlace. *Filigree*: Style II in triple-strand beaded wire; the designs on the sides are raised off the pommel body in each case on a precisely cut lattice made from thick sheet; edges framed by double/triple beaded wires; shoulders have a line of collared granules, arranged in order of decreasing size, surrounded by herringbone banding (formed of two-ply twisted wires); herringbone pattern also covers the rivet-housings, with beaded wire collars for the rivet-holes. *Interior*: no sheet joins visible. *Wear/marks*: moderate wear at edges; flattening of the filigree below the apex both sides, with slight impressions, probably caused by a tool (?tongs). Apex scratched. Filigree wire flattened on underside of base from contact with a hilt-plate/guard.

(Grid location: [K393] TH129, no location)

L. 38.5mm; W. 17.5mm; H. 17mm; Th. edge 1.5mm; Wt 11.62g; X-ray: L2, L7, L8



19 Photography Lucy Martin, Cotswold Archaeology.

19 [K710]

POMMEL IN GOLD OF COCKED-HAT FORM WITH FILIGREE ANIMAL ORNAMENT. One side ragged along its edge (?levered); one end pushed into the interior. Constructed of sheet metal over a partly surviving cast silver core. Paired rivet-housings each end; no rivets. Plain sheet cap over the apex. *Style II*: identical animal ornament each side, of two zoomorphs with interlacing bodies and jaws. *Filigree*: Style II in triple-strand beaded wire on flat sheet; edges framed by double/triple beaded wires; herringbone pattern (formed of two-ply twisted wires) fills the shoulders and covers the rivet-housings. *Interior*: core concave, tilted and missing one end (corresponding with the possible levering damage to the pommel side). *Wear/marks*: light wear overall. Apex dented and punctured.

(*Note*: found on site with one fragment of silver die-impressed sheet, **600**: [K24])

(*Grid location*: [K710] BA0195, grid I12)

L. 40.5mm; W. 18mm; H. 20mm; Th. edge 2mm; Wt 16.06g; X-ray: L30



20 Photography Aleksandra Osinska, Cotswold Archaeology. Drawing Chris Fern.

20 [K460]

POMMEL IN GOLD OF COCKED-HAT FORM WITH FILIGREE ANIMAL ORNAMENT. Slightly squashed together with damaged wires, one end torn, and without its core. Constructed of sheet metal. Paired rivet-housings each end; no rivets. Plain sheet cap over the apex. *Style II*: almost identical animal ornament each side, of two confronted zoomorphs with twisted necks, oval heads and interlacing bodies (one side, one head is missing its ear/crest). *Filigree*: *Style II* in triple-strand beaded wire on flat sheet; edges framed by double/triple beaded wires; the shoulders have curving bands of alternating (two-ply) twisted and beaded wires (forming a band of herringbone one side); combination twisted and beaded wires set vertically also cover the rivet-housings, with beaded wire collars for the rivet-holes. *Interior*: sheet joins visible along one shoulder/apex, and at one side and end. *Wear/marks*: light wear overall, moderate at edges; but the flattening and unseating of the wires one side, below the apex, was probably caused by an impact or a tool (?tongs). Apex scratched. Filigree wire flattened on underside of base from contact with a hilt-plate/guard (or possibly trimmed).

(Note: from soil in interior: one boss-headed rivet, 629: [K1897])

(Grid location: [K460] TH223, no location)

L. 45.5mm; W. 11mm; H. 20mm; Th. edge 1.5mm; Wt 11.91g; X-ray: L31



21 Photography Lucy Martin, Cotswold Archaeology. Drawing Chris Fern.

21 [K1278]

POMMEL IN GOLD OF COCKED-HAT FORM WITH FILIGREE ANIMAL ORNAMENT. Missing both ends (i.e. rivet-housings) and its core; one side pushed in. Constructed of sheet metal, with an additional plain sheet cap over the apex. *Style II*: one side has animal ornament, the design showing two affronted zoomorphs with oval heads and interlacing bodies. *Filigree*: Style II in triple-strand beaded wire on flat sheet, with incised layout marks behind. The other side has curving bands of decoration, divided and delineated in triple-strand: both sides of a central arch are filled with herringbone pattern (formed of two-ply twisted wires); the remaining bands are filled with collared granules (with double collars of beaded and plain wires); the shoulders have herringbone fill also with a beaded wire mid-rib; edges framed by double/triple beaded wires. *Interior*: a small amount of soil (irremovable, P. Greaves pers. comm.). *Wear/marks*: moderate wear overall. Apex dented.

(Grid location: [K1278] BA0367, grid N12)

L. 32.5mm; W. 13mm; H. 18mm; Th. edge 1mm; Wt 7.81g (small amount of soil);
X-ray: L2, L9



22 Photography Lucy Martin, Cotswold Archaeology.

22 [K381]

POMMEL IN GOLD OF COCKED-HAT FORM WITH FILIGREE SERPENT ORNAMENT. One side bowed out, and without its core. Constructed of sheet metal. Paired rivet-housings each end; no rivets. Plain sheet cap over the apex. *Style II/interlace*: identical serpent design each side, forming irregular interlace, the creatures with almond-shaped heads. Shoulders have identical interlace designs (but pattern rotated 180 degrees). *Filigree*: Style II/interlace in triple-strand beaded wire on flat sheet; edges framed by double/triple beaded and plain wires; thick and thin beaded wires, set vertically, cover the rivet-housings, with beaded wire collars at the rivet-holes. *Interior*: apex underside reinforced with a sheet patch. *Wear/marks*: light wear overall, moderate at edges. Edge wire snapped and filigree flattened one side (with a corresponding dent in the interior), probably caused by a tool (?tongs). Filigree wire flattened on the underside of the base from contact with a hilt-plate/guard.

(Grid location: [K381] TH130, no location)

L. 39mm; W. 19mm; H. 18.5mm; Th. edge 1.5mm; Wt 12.93g; X-ray: L33



23 Photography Lucy Martin, Cotswold Archaeology.

23 [K293]

POMMEL IN GOLD OF COCKED-HAT FORM WITH FILIGREE ORNAMENT. One end and core missing, and misshapen by a large dent one side. Constructed of sheet metal. Paired rivet-housings of rolled sheet remain at the intact end; no rivets. Plain sheet cap over the apex. *Style II*: an identical design each side of branching lines, probably a highly abstract version of the motif of a pair of cornered animal heads (see pommel 68). *Filigree*: the branching lines and inner frame on the sides and shoulders are formed from stripwork (flat fillets of sheet) flanked by beaded wires, on flat sheet backgrounds; the outer frame comprises herringbone banding (formed of two-ply twisted wires) with beaded wire outermost. *Interior*: two incised 'X' marks. *Wear/marks*: moderate wear at edges. Apex dented. Filigree wire flattened on the underside of the base from contact with the hilt-plate/guard, or trimmed to sit flush.

(Note: from soil in interior: three gold nails/rivets, 657: [K1828]; one silver nail/rivet, 675: [K1829])

(Grid location: [K293] TH157, no location)

L. 45mm; W. 12.5mm; H. 18mm; Th. edge 1.5mm; Wt 11.84g; X-ray: L3, L9



24 Photography Lucy Martin, Cotswold Archaeology.

24 [K307]

POMMEL IN GOLD OF COCKED-HAT FORM WITH FILIGREE INTERLACE. Sides dented. Constructed of sheet metal. Paired rivet-housings each end; no rivets. *Interlace*: a similar design both sides, each with a central figure-of-eight, with surrounding interlace. *Filigree*: interlace in triple-strand beaded wire on flat sheet; edges framed with beaded wire; herringbone pattern (formed of two-ply twisted wires) runs the full length of the apex/shoulders, and also covers the rivet-housings; the sheet body of the pommel lips under the wire at the basal edge. *Interior*: pommel body and rivet-housings formed possibly from a single piece of sheet, as no joins are visible; apex underside reinforced with an additional sheet patch; over this are remains of an off-white calcite core-filler. *Wear/marks*: light wear overall, moderate at apex.

(Note: from soil in interior: one fragment of gold sheet, 682: [K1848]; one cross-hatched foil 695: [K1849])

(Grid location: [K307] TH180, no location)

L. 44mm; W. 12.5mm; H. 14mm; Th. edge 1mm; Wt 11.75g; X-ray: L31



25 Photography Lucy Martin, Cotswold Archaeology.

25 [K717]

POMMEL IN GOLD OF COCKED-HAT FORM WITH FILIGREE INTERLACE. One end and its core missing, one side pushed in and the other dented on its edge (?levered). Constructed of sheet metal. Paired rivet-housings at the remaining end; one gold rivet, full length, bent. Plain sheet cap over the apex. *Interlace*: an identical design each side incorporating Stafford knots in the corners, but with filigree collared granules one side. *Filigree*: interlace in triple-strand beaded wire on flat sheet; granules have beaded-wire collars; edges framed by double beaded wires; shoulders filled with beaded wire figure-of-eights framed by herringbone banding (formed of two-ply twisted wires); herringbone pattern also covers the rivet-housings, with a beaded wire collar for the undamaged rivet-hole; the sheet body of the pommel lips under the wire at the basal edge. *Interior*: sheet join at the intact end for the rivet-housings. *Wear/marks*: moderate wear overall, heavy close to the apex.

(Grid location: [K717] BA0200, no location)

L. 46mm; W. 10mm; H. 16.5mm; Th. edge 1mm; Wt 9.96g; X-ray: L31

(Note: found on site with gold boss 638: [K18]. From soil in interior: one gold mount [1924] from hilt-guard 409)



26 Photography Lucy Martin, Cotswold Archaeology.

26 [K276]

POMMEL IN GOLD OF COCKED-HAT FORM WITH FILIGREE INTERLACE. Badly misshapen and torn, with one end and its core missing. Constructed of sheet metal. Paired rivet-housings at the remaining end; no rivets. Soldered to the end is a hilt-plate tip with one hole (i.e. it is one with the pommel); a corresponding 'plate' flange runs around the basal edge. Plain sheet cap over the apex. *Interlace*: similar pattern of twisted interlace each side. Shoulders have identical bands of five-twist interlace (but pattern rotated 180 degrees). *Filigree*: interlace in triple-strand beaded wire on flat sheet; edges framed by combination beaded, plain and two-ply twisted wires (forming herringbone banding); rivet-housings covered with beaded and twisted wires, with beaded wire collars at the rivet-holes; double collar of beaded and plain wire at the rivet-hole of hilt-plate. *Interior*: sheet join lengthways. *Wear/marks*: light wear overall, moderate at the apex. Scratches on sides (possibly recent).

(Note: from soil in interior: two silver nail/rivet fragments, 675: [K1815])

(Grid location: [K276] TH154, no location)

L. 27mm; W. 42mm; Wt 9.19g; X-ray: L34



27 Photography Aleksandra Osinska, Cotswold Archaeology.

27 [K299]

POMMEL IN GOLD OF COCKED-HAT FORM WITH FILIGREE INTERLACE. Constructed of sheet metal over a cast copper-alloy core. Paired rivet-housings each end; two gold rivets remain, full length (L. 19mm). *Interlace*: similar, semi-regular interlace each side, somewhat inexpertly executed. Shoulders have interlace also, the same pattern (but rotated 180 degrees each shoulder). *Filigree*: interlace in triple-strand beaded wire (the thinner flanking wires are spiral beaded) on flat sheet; one annulet was added at one end on one side, and multiple annulets and one figure-of-eight intersperse with the design the other side; edges framed by beaded wire (the thinner wires are spiral beaded); herringbone pattern (formed of two-ply twisted wires) covers the rivet-housings and apex, with figure-of-eight collars for the rivet-holes. *Interior*: core underside is concave, and broken on one edge (old break). *Wear/marks*: moderate wear overall, but the flattening of the filigree both sides, below the apex, was possibly caused by a tool (?tongs). Filigree wire flattened on the underside of the base from contact with a hilt-plate/guard. *Set*: possibly a suite with hilt-collar pair **105** and **106**.

(Grid location: [K299] TH166, no location)

L. 52mm; W. 15.5mm; H. 20mm; Th. edge 1.5mm; Wt 25.08g; X-ray: L31, L41



28 Photography Lucy Martin, Cotswold Archaeology.

28 [K650, K1252, K1255, ?K1123]

POMMEL IN GOLD OF COCKED-HAT FORM WITH FILIGREE INTERLACE. Reassembled from three fragments, missing one end, parts of both sides and its core (additionally, two further small fragments [K1123] are possibly of this pommel). Constructed of sheet metal. Paired rivet-housings at the remaining end; no rivets. Plain sheet cap over the apex (visible in truncated section, before rejoining, as a separate layer over the sheet body). *Interlace*: a different irregular design each side. Shoulders have identical interlace (but pattern rotated 180 degrees). *Filigree*: interlace in triple-strand beaded wire on flat sheet; edges framed by double/triple beaded wires; alternating beaded and plain wires, set vertically, cover the rivet-housings, with beaded wire collars for the rivet-holes. *Interior*: incised with three lines: '///'. *Wear/marks*: light wear overall, but moderate at ends and edges.

(Grid location: [K650] TH053, no location; [K1123] BA0447, grid M6; [K1252] BA0340, grid N9; [K1255] BA0344, grid N10)

L. 40mm; W. 12mm; H. 19mm; Th. edge 1mm; Wt 9.85g; X-ray: L30, L52, L88, L90



29 Photography Lucy Martin, Cotswold Archaeology. Drawing Chris Fern.

29 [K701]

POMMEL IN GOLD OF COCKED-HAT FORM WITH FILIGREE INTERLACE. Missing both ends (i.e. rivet-housings), the sides twisted and pinched together. Constructed of sheet metal, with an additional plain sheet cap over the apex. *Interlace*: a similar irregular and dense design each side. *Filigree*: interlace in triple-strand beaded wire (the thinner flanking wires are spiral beaded); on the sides the sheet background has been repoussé worked (from the front, between the pattern); edges framed by beaded wires (with innermost a two-ply twisted wire at the top of one side); shoulders have double rows of collared granules (with spiral-beaded wire collars) framed by herringbone banding (formed of two-ply twisted wires). *Interior*: remains of a calcite-wax core-filler at the apex. *Wear/marks*: light wear overall. Apex scratched and slightly dented.

(Grid location: [K701] TH068, no location)

L. 47.5mm; W. 12mm; H. 18.5mm; Th. edge 1mm; Wt 7.97g; X-ray: L117



30 Photography Lucy Martin, Cotswold Archaeology. Drawing Chris Fern.

30 [K1004]

POMMEL IN GOLD OF COCKED-HAT FORM WITH FILIGREE INTERLACE. One side pushed in and torn, and without its core. Constructed of sheet metal. Paired rivet-housings each end; no rivets. Plain sheet cap over the apex. *Interlace*: one side is a looping pattern; the other side is a twisted pattern. Shoulders have identical two-twist interlace (but pattern rotated 180 degrees). *Filigree*: interlace in triple-strand beaded wire; on the sides the sheet background has been repoussé worked (from the front between the wires); edges framed by double/triple beaded wires; herringbone pattern (formed of two-ply twisted wires) set vertically covers the rivet-housings, with beaded wire collars for the rivet-holes. *Interior*: not visible. *Wear/marks*: moderate wear at edges and ends. Apex scratched. Filigree on the damaged side flattened by an impact (?recent) or possibly by a tool.

(Grid location: [K1004] BA0073, grid K10)

L. 43.5mm; W. 10mm; H. 19mm; Th. edge 1.5mm; Wt 15.36g; X-ray: L30



31 Photography Lucy Martin, Cotswold Archaeology.

31 [K88]

POMMEL IN GOLD OF COCKED-HAT FORM WITH FILIGREE INTERLACE. One side pushed in (?levered), one end torn and partly missing, and without its core. Constructed of sheet metal. Paired rivet-housings of reeded sheet at the intact end (one remains at the damaged end); one gold rivet, upper part only. Plain sheet cap over the apex. *Interlace*: an identical, irregular looping pattern each side. Shoulders have identical regular interlace (but pattern rotated 180 degrees). *Filigree*: interlace in triple-strand beaded wire on flat sheet; edges framed with double/triple beaded wires. *Interior*: sheet join lengthways; *Wear/marks*: light wear overall, moderate at edges and ends. Apex scratched.

(Grid location: [K88] BA0065, grid K10)

L.41mm; W. 12mm; H. 15mm; Th. edge 1mm; Wt 6.94g; no X-ray



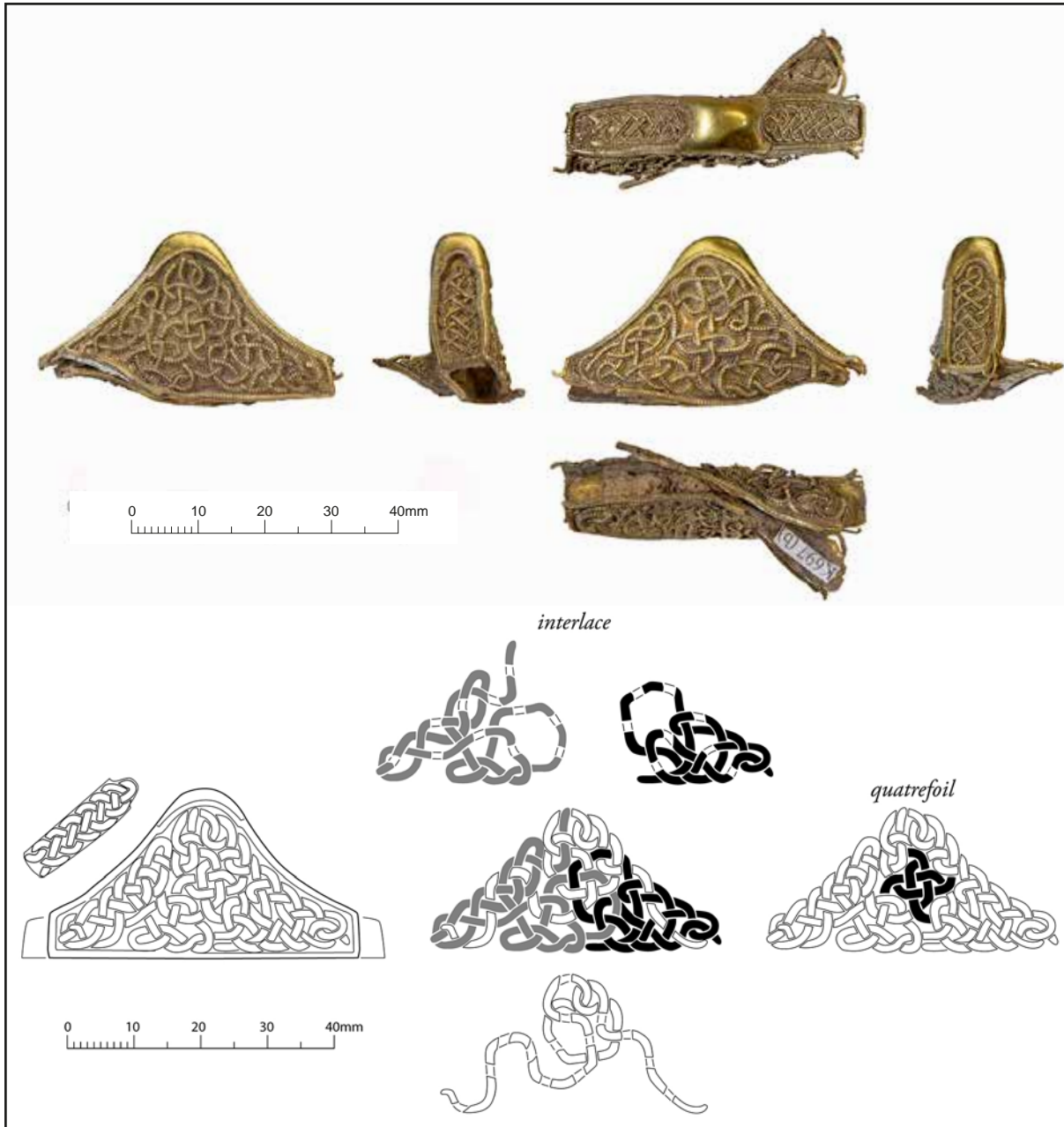
32 Photography Guy Evans, Barbican Research Associates. Drawing Chris Fern.

32 [K458]

POMMEL IN GOLD OF COCKED-HAT FORM WITH FILIGREE INTERLACE. Constructed of sheet metal. Paired rivet-housings each end; parts of three gold rivets, one possibly full length, but bent (L. 12mm). Plain sheet cap over the apex. *?Style II/interlace*: a different, incoherent and fragmented pattern each side, interspersed with collared granules; overall the designs have a quasi-zoomorphic character. Shoulders have identical *?Style II/interlace* designs (but rotated 180 degrees each shoulder). *Filigree*: *?Style II/interlace* in triple-strand beaded wire on flat sheet (some of the thinner flanking wires are spiral beaded, and occasionally wires are missing); granules have spiral-beaded collars interspersed with the design both sides; edges framed by double/triple beaded wires; beaded wire covers the rivet-housings, with collars for the rivet-holes. *Interior*: blackened remains of a beeswax core-filler at the apex. *Wear/marks*: light wear overall. Apex dented one side, with a corresponding dent in the filigree on the other face, possibly indicating damage from a tool (?tongs).

(Grid location: [K458] TH236, no location)

L. 39mm; W. 17mm; H. 21mm; Th. edge 1mm; Wt 10.31g; X-ray: L3, L9



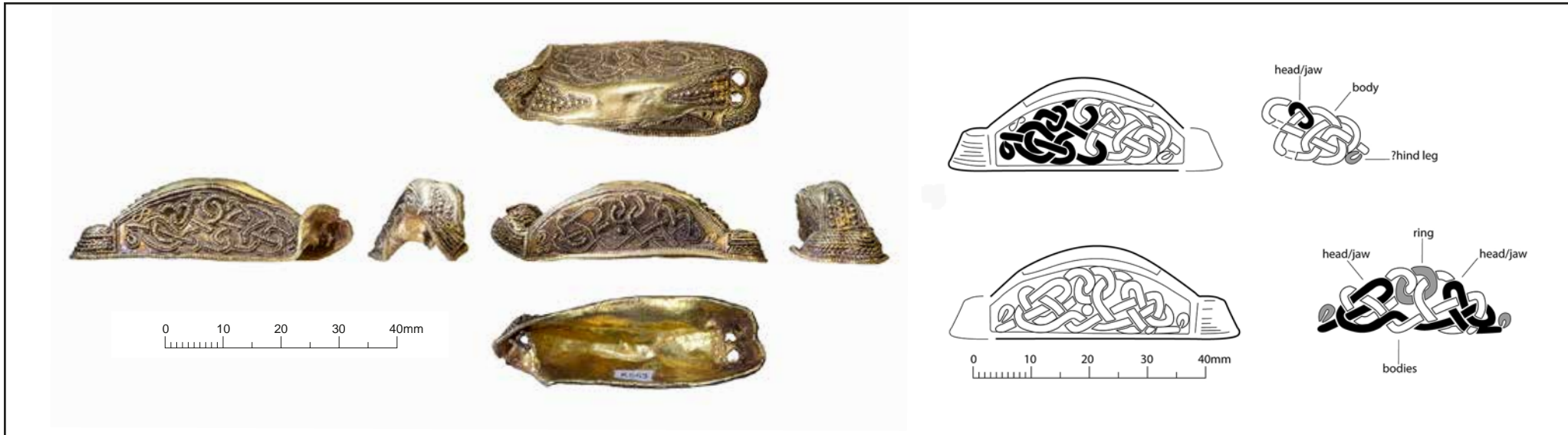
33 [K697]

POMMEL IN GOLD OF COCKED-HAT FORM WITH FILIGREE INTERLACE. Tall example. Missing both ends (i.e. rivet-housings), sides pinched together and one end twisted. Constructed of sheet metal, with an additional plain sheet cap over the apex. ?*Style II/interlace*: a different irregular pattern each side, each forming a quatrefoil centrally. One side possibly includes zoomorphic elements, perhaps two creatures; the other side the interlace is formed of three writhing strands. Shoulders have identical regular interlace (but pattern rotated 180 degrees). *Filigree*: ?*Style II/interlace* in triple-strand beaded wire on flat sheet; edges framed by beaded wire. *Interior*: not visible (some soil remains and is irremovable: P. Greaves pers. comm.). *Wear/marks*: light wear overall. Apex dented and scratched.

(*Grid location*: [K697] TH052, no location)

L. 44mm; W. 7mm; H. 26mm; Th. edge 1.5mm; Wt 15.42g (some soil); X-ray: L1, L29

33 Photography Aleksandra Osinska, Cotswold Archaeology. Drawing Chris Fern.



34 Photography Aleksandra Osinska, Cotswold Archaeology. Drawing Chris Fern.

34 [K553]

POMMEL IN GOLD OF ROUND-BACK FORM WITH FILIGREE ANIMAL ORNAMENT. Slightly squashed, one side pushed in, one end bent upwards (?levered), and without its core. Constructed of sheet metal. Paired rivet-housings each end; no rivets. Plain sheet cap over the apex. *Style II*: animal ornament each side. Both designs show different versions of a pair of affronted creatures; the zoomorphs have interlacing bodies and jaws; one side the creatures have oval heads; the other side the creatures have U-shaped jaws that join together, and the necks are connected by a ring. *Filigree*: Style II in triple-strand beaded wire on flat sheet; a single collared granule is central one side and a small figure-of-eight is included on the other; shoulders filled with collared granules in lines separated by beaded wires; edges framed by double/triple beaded wires; herringbone pattern (formed of two-ply twisted wires) covers the rivet-housings, with beaded wire collars for the rivet-holes; the sheet body of the pommel lips under the wire at the basal edge. *Interior*: sheet join on one shoulder. *Wear/marks*: light wear overall, focused at the top, edges and ends. Apex dented and scratched.

(Grid location: [K553] TH005, no location)

L. 49mm; W. 17mm; H. 16mm; Th. edge 1.5mm; Wt 9.79g; X-ray: L3, L9

(Note: found in soil in interior: four silver fragments, 690: [K1908])



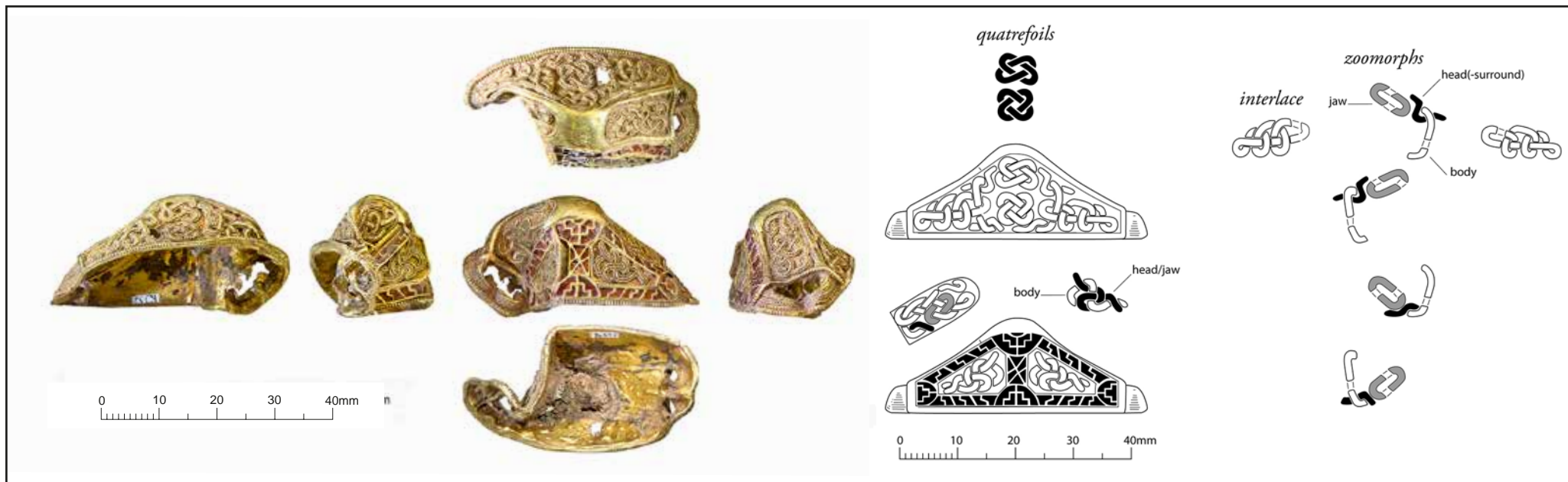
35 Photography Aleksandra Osinska, Cotswold Archaeology. Drawing Chris Fern.

35 [K1073]

POMMEL IN GOLD OF ROUND-BACK FORM WITH FILIGREE ANIMAL ORNAMENT. Missing both ends (i.e. rivet-housings), sides spread, and without its core. Constructed of sheet metal, with an additional cap of plain sheet over the apex. *Style II/interlace*: animal ornament each side. Both designs show different arrangements based on the motif of two affronted creatures (one side the motif can be alternatively 'read' as showing two confronted creatures, cf. pommel 56). The zoomorphs have interlacing bodies and jaws with interchangeable elements. Shoulders have identical four-twist interlace bands (but pattern rotated 180 degrees). *Filigree*: *Style II/interlace* in triple-strand beaded wire; on each side the design is raised on a sheet lattice, roughly cut-out to match the pattern; edges framed by beaded wires. *Interior*: no sheet joins visible. *Wear/marks*: heavy wear around the apex and edges.

(Grid location: [K1073] BA0167, grid M10)

L. 31mm; W. 23mm; H. 16mm; Th. edge 1mm; Wt 9.25g; X-ray: L34



36 Photography Aleksandra Osinska, Cotswold Archaeology. Drawing Chris Fern.

36 [K352]

POMMEL IN GOLD OF COCKED-HAT FORM WITH FILIGREE ANIMAL AND GARNET CLOISSONNÉ ORNAMENT. Both sides spread, one end dented and twisted with the rivet-holes torn open; some wires unseated and some garnets fractured. Constructed of sheet metal. Paired rivet-housings each end; no rivets. Plain sheet cap over the apex. *Style II*: animal ornament both sides. On the side with the garnet cloissonné frame are two inserted filigree panels (the edge of one has lifted), each holding an identical zoomorph (mirrored). The other side is decorated entirely by filigree and has four creatures confronted (that share body parts), with interlocking oval jaws that combine to form two quatrefoil knots. A single interlacing creature decorates each shoulder (but rotated 180 degrees, relative to each other). *Cloissonné*: the cellwork is shallow (D. 1.5mm), and is comprised mainly of stepped cells; the flat red stones are backed by cross-hatched gold foils of 'standard' type. *Filigree*: *Style II* in triple-strand beaded wire; on the sides the sheet backing has been die-impressed to set the designs in greater relief; edges framed by double/triple beaded wires; herringbone pattern (formed of two-ply twisted wires) covers the rivet-housings; the sheet body of the pommel lips under the wire at the basal edge. *Interior*:

the reverses of the die-impressed sheet backings are visible. Remains of an off-white beeswax core-filler at the apex (calcite was also present, but was not mixed with the wax filler; it could represent a separate (?top) layer in the overall core structure). *Wear/marks*: moderate wear overall, heavy at edges and around the apex; but the flattening of the filigree near the apex with scratches one side was possibly caused by a tool (?tongs). Hole in the sheet body one side.

(*Grid location*: [K352] TH110, no location)

L. 40.5mm; W. 22mm; H. 14mm; Th. edge 1mm; Wt 10.45g; no X-ray



37 Photography Lucy Martin, Cotswold Archaeology.

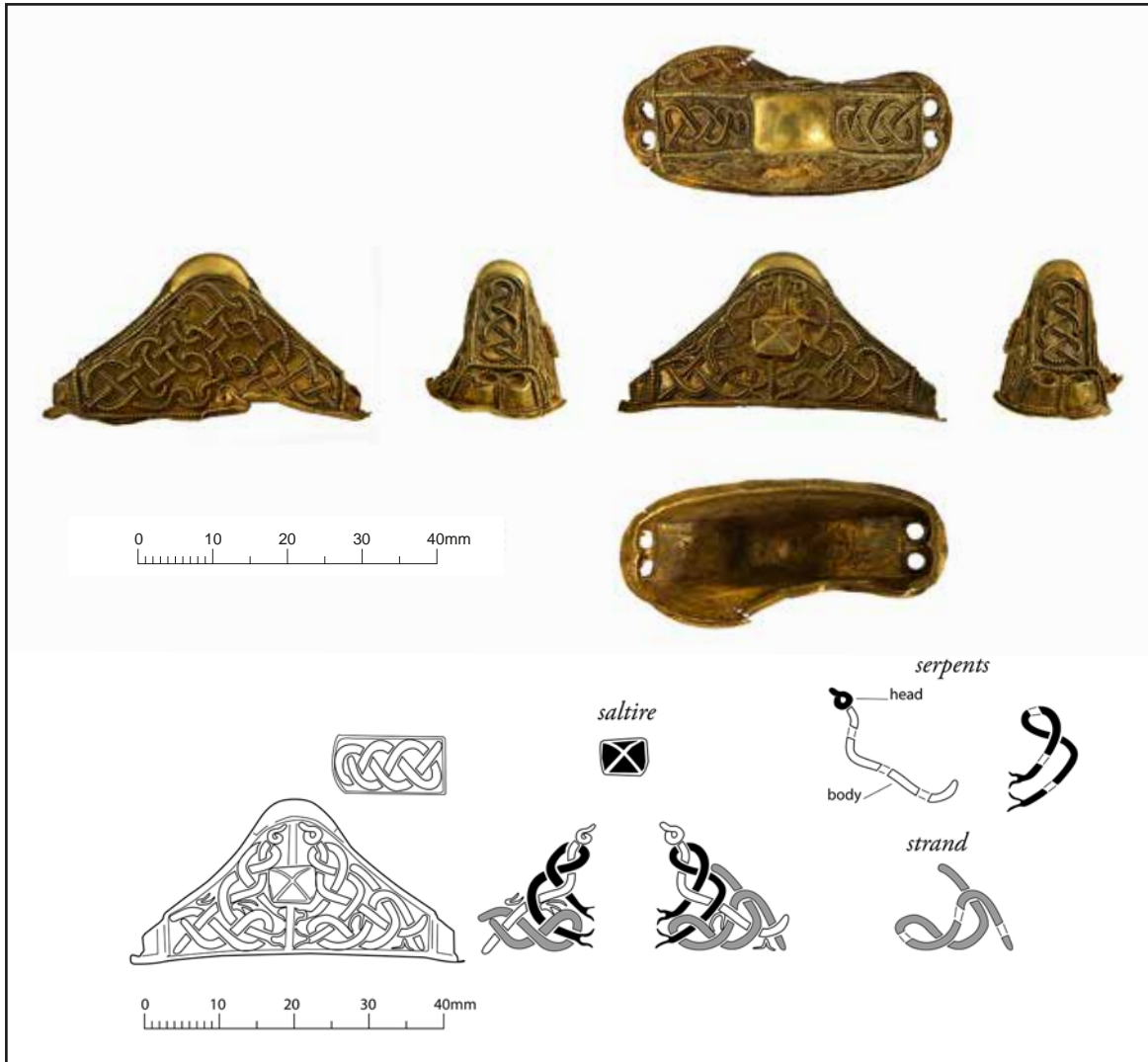
37 [K1228]

POMMEL IN GOLD OF ROUND-BACK FORM, WITH FILIGREE INTERLACE AND SERPENT ORNAMENT, AND ONE SIDE A PANEL OF GARNET CLOISSONNÉ. Missing both ends (i.e. rivet-housings) and its core, the sides spread; the cloisonné panel and one flanking filigree panel are torn at their join and partly separated from the apex. Constructed of sheet metal, with an additional cap of plain sheet over the apex. *Style II/interlace*: one side has irregular looping, non-zoomorphic interlace. Shoulders have Style II serpents with plaited bodies. *Cloisonné*: the narrow central panel inlaid with garnets one side comprises three rectangular frames with saltire patterns, formed in shallow cellwork; the flat triangular stones are backed by 'standard' cross-hatched gold foils. *Filigree*: the gold panels flanking the cloisonné panel were separately applied to the pommel side, inserted into cut-out frames; they are filled with collared granules in zones divided by herringbone banding (formed of two-ply twisted wires); on one panel the herringbone bands form a cross; the interlace and Style II is in triple-strand beaded wire; the sheet backing to the interlace design was repoussé worked (from the front), or possibly the sheet was die-impressed before the wires were set, and it is also in a herringbone frame; edges framed by beaded wire; granules for the eyes of the serpents. *Interior*: apex

underside reinforced with a sheet patch. Sheet join one end, possibly for the missing rivet-housings. Panel frames visible on the reverse. *Wear/marks*: moderate wear close to the apex.

(Grid location: [K1228] BA0138, grid M9)

L. 44mm; W. 13mm; H. 14mm; Th. edge 1.5mm; Wt 6.90g; X-ray: L2, L9



38 [K666]

POMMEL IN GOLD OF COCKED-HAT FORM, WITH FILIGREE SERPENT AND INTERLACE ORNAMENT, AND ON ONE SIDE A SMALL CLOISSONÉ SETTING. One edge pulled out and cut (?levered), and without its core. Constructed of sheet metal, with a narrow flange extending around the base. Paired rivet-housings each end; no rivets. Plain sheet cap over the apex. *Style II/interlace*: the cloissonné setting is flanked by two panels of serpent interlace, the creatures shown confronted. Non-zoomorphic interlace fills the other side. Shoulders have identical regular interlace (but pattern rotated 180 degrees). *Cloissonné*: small shallow rectangle of cellwork (D. 1.5mm) with a saltire pattern filled with a decayed inlay of unidentified type. *Filigree*: Style II/interlace in triple-strand beaded wire on flat sheet; beaded wire divides the panels and frames the edges, and embellishes the otherwise plain rivet-housings, including collars for the rivet-holes. *Interior*: vertical sheet joins both sides (with a corresponding, overlapping join visible on the exterior one side, behind the interlace). *Wear/marks*: light wear overall. Scratches on apex.

(Grid location: [K666] TH090, no location)

L. 44mm; W. 16mm; H. 21mm; Wt 10.21g; X-ray: L2, L7, L8, L9

38 Photography Guy Evans, Barbican Research Associates. Drawing Chris Fern.



39 Photography Lucy Martin, Cotswold Archaeology. Drawing Chris Fern.

39 [K349]

POMMEL IN GOLD OF COCKED-HAT FORM WITH FILIGREE INTERLACE AND ON ONE SIDE A CLOISSONNÉ PANEL. Missing both ends (i.e. rivet-housings), and without its core. Constructed of sheet metal, with an additional cap of plain sheet over the apex. *Interlace*: two panels of interlace flank the cloissonné panel, and a different irregular interlace design fills the other side; the overall finish is inexpert with misaligned sections. *Cloissonné*: the trapezoidal panel (H. 16mm; W. 14mm) has cells filled with a corroded inlay of unidentified type. The stepped pattern is somewhat irregular, but is based on a central cross with expanded terminals. *Filigree*: interlace in triple-strand beaded wire on flat sheet (one single strand was substituted with a short length of two-ply twisted wire); beaded wires also frame the edges and cloissonné panel; each shoulder has a single line of collared granules framed by herringbone banding (formed of two-ply twisted wires); one collared granule was also added in one bottom corner of one side; the sheet body of the pommel lips under the wire at the basal edge. *Interior*: cloissonné panel backed by a sheet patch; several other sheet joins. *Wear/marks*: scratches in interior (possibly from removal of core).

(Grid location: [K349] TH137, no location)

L. 44mm; W. 15mm; H. 22mm; Th. edge 1mm; Wt 10.96g; X-ray: L32

(Note: from soil in interior: one fragment of corroded silver/copper-alloy, 691: [K1864])



40 Photography Lucy Martin, Cotswold Archaeology.

40 [K680]

POMMEL IN GOLD OF COCKED-HAT FORM WITH FILIGREE INTERLACE AND ON ONE SIDE CLOISONNÉ ORNAMENT. Sides misshapen. Constructed of sheet metal over a cast copper-alloy core (a small part is missing, and it came loose during conservation). Paired rivet-housings each end; two gold rivets one end, one bent, but full length. Apex has an empty, flattened, square gem-setting. *Interlace*: the filigree decoration one side comprises irregular interlace. Shoulders have ring interlace (the pattern rotated 180 degrees). *Cloisonné*: shallow geometric cellwork, formed mainly of stepped cells and filled with a decayed inlay of unidentified type. *Filigree*: interlace in triple-strand beaded wire on flat sheet (the thinner flanking wires are spiral beaded); edges framed by double/triple beaded wires; fine beaded wire also covers the rivet-housings; the sheet body of the pommel lips under the wire at the basal edge. *Interior*: a patch of sheet reinforces the underside of the apex. *Wear/marks*: moderate wear overall, heavy at the apex, edges and ends; rivet heads worn down and wires missing on rivet-housings; but the flattening of the interlace and cellwork on the sides was possibly caused by a tool (?tongs).

(Grid location: [K680] TH070, no location)

L. 50.5mm; W. 21mm; H. 17mm; Th. edge 1mm; Wt 21.58g (pommel 11.99g; core 9.59g); no X-ray



41 Photography Lucy Martin, Cotswold Archaeology. Drawing Chris Fern.

41 [K465]

POMMEL IN GOLD OF COCKED-HAT FORM, WITH GARNET CLOISSONNÉ ONE SIDE AND ON THE SHOULDERS, AND FILIGREE INTERLACE THE OTHER SIDE. Sides bowed out and one end torn open; one garnet lost and two fractured. Constructed of sheet metal. Paired rivet-housings each end; no rivets. Plain sheet cap over the apex. *Cloisonné*: shallow cellwork of flat garnets. The side cloisonné has a central cross with stepped and axe-shaped arms, flanked by cellwork of stepped (including split-mushroom) and fish-scale forms. Shoulders have identical patterns of stepped and mushroom shapes. Garnets backed by cross-hatched gold foils of 'standard' type. *Interlace*: the other side has a simple interlace band in filigree, interspersed with collar granules. *Filigree*: interlace in triple-strand beaded wire (the thinner flanking wires are spiral beaded) on flat sheet; granules have collars of spiral-beaded wire also; the design is framed by bands of herringbone (formed of two-ply twisted wires) and an outer two-ply twisted-beaded wire; plain rivet-housings framed with herringbone banding and plain wires. *Interior*: no sheet joins visible, but small dents from a ?tool. *Wear/marks*: moderate wear overall, but one rivet-housing is more worn down. Wire at the base flattened on the underside by contact with a hilt-plate/guard. Midway along one basal edge is a tool mark (?levered).

(Grid location: [K465] TH229, no location)

L. 42.5mm; W. 17.5mm; H. 14mm; Th. edge 1–1.5mm; Wt 11.75g; X-ray: L4, L7, L8, L9

(Note: from soil in interior: gold filigree object 680 and four small silver fragments, 690: [1899])



42 Photography Aleksandra Osinska, Cotswold Archaeology.

42 [K554]

POMMEL IN GOLD OF COCKED-HAT FORM WITH FILIGREE INTERLACE AND ON ONE SIDE A GEM-SETTING. One end torn (at rivet-housings). Constructed of sheet metal. Paired rivet-housings each end; no rivets. Plain sheet cap over the apex. *Interlace*: a different irregular pattern each side; centrally one side is a quatrefoil knot in a round frame. Shoulders have identical interlace (the pattern rotated 180 degrees). *Gem-setting*: corresponding with the position of the quatrefoil knot, on the other side, is a round setting with a plain sheet bezel, its gemstone lost. *Filigree*: interlace in triple-strand beaded wire on flat sheet; beaded wire also frames the edges, roundel and gem-setting; herringbone pattern (formed of two-ply twisted wires) covers the rivet-housing, with plain wire collars at the rivet-holes. *Interior*: an off-white material was discovered at the apex in conservation; it is probably remains of a core-filler (not analysed). Sheet joins visible at the ends for the rivet-housings. *Wear*: light wear overall, moderate at edges; apex flattened and dented; scratches inside gem-setting (possibly from removal of stone); flattening and a dent in the filigree on one side, near the apex, possibly from a tool (?tongs).

(Grid location: [K554] TH008, no location)

L. 46mm; W. 9.5mm; H. 18mm; Th. edge 1mm; Wt 11.21g; X-ray: L1, L9



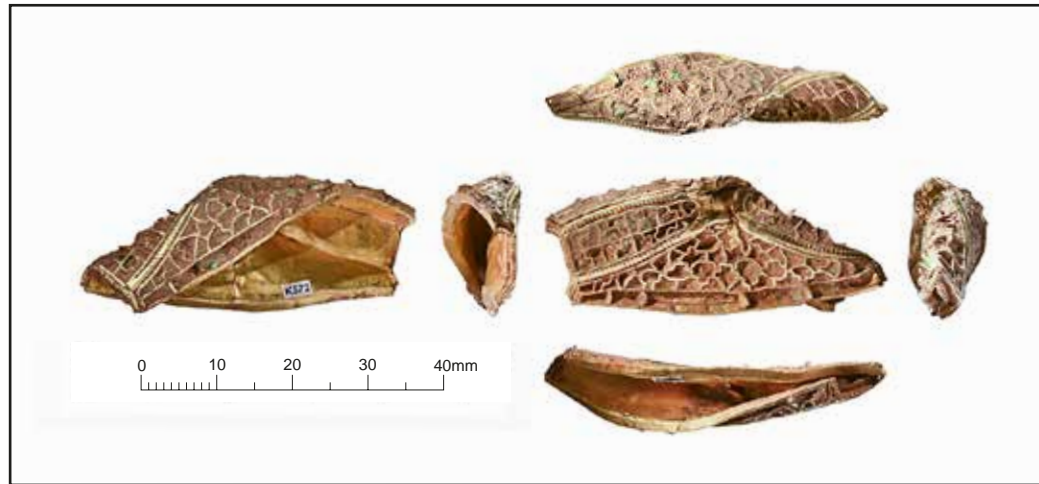
43 Photography Aleksandra Osinska, Cotswold Archaeology.

43 [K360]

POMMEL IN GOLD OF COCKED-HAT FORM WITH CLOISSONNÉ ORNAMENT. Both ends missing (i.e. rivet-housings) and without its core, sides spread, and with a dent at the end of one side (?levered). Constructed of sheet metal, with an additional plain sheet cap over the apex. *Cloisonné*: shallow cellwork filled with a decayed inlay of unidentified type. Similar geometric pattern both sides (obscured by corrosion product); X-radiograph indicates a central diamond composition, with the overall scheme including mushroom-shaped and stepped cells. Shoulders have identical rows of three mushroom-shaped cells. *Filigree*: edges framed by beaded wire. *Interior*: sheet joins at the apex. *Wear/marks*: heavy wear to filigree edging.

(Grid location: [K360] TH144, no location)

L. 38.5mm; W. 19.5mm; H. 16mm; Wt 9.51g; no X-ray



44 Photography Lucy Martin, Cotswold Archaeology.

44 [K572]

POMMEL IN GOLD OF COCKED-HAT FORM WITH CLOISSONNÉ ORNAMENT. Missing both ends (i.e. rivet-housings) and its core, and twisted. Constructed of sheet metal. *Cloisonné*: shallow cellwork filled with a decayed inlay of unidentified type. Sides have different geometric patterns (obscured by corrosion product), including mushroom-shaped and arrow-shaped cells. Shoulders have matching patterns of stepped cells. *Filigree*: edges framed by beaded wire. *Interior*: sheet join widthways. *Wear/marks*: heavy wear to filigree edging and apex.

(Grid location: [K572] TH039, no location)

L. 45mm; W. 10mm; Th. edge 2mm; Wt 8.23g; X-ray: L30



45 Photography Lucy Martin, Cotswold Archaeology.

45 [K401, K1018, K1025]

POMMEL IN GOLD OF COCKED-HAT FORM WITH CLOISSONNÉ ORNAMENT. Found in three fragments; one side broken at an original join; missing both sides, and all the remaining cellwork is empty (i.e. no stones/backing foils). Plain apex and paired rivet-housings each end cast, the rest made of sheet metal; rivet-housings have vertical reeds; one gold rivet, full length (L. 22mm). *Cloissonné*: partial border of rectangular cells one side. Shoulders have matching geometric stepped patterns (rotated 180 degrees each shoulder). *Wear/marks*: ?light wear overall. Interior scratched. Apex/shoulders scratched and dented, possibly caused by a tool (?tongs).

(*Grid location*: [K401] TH115, no location; [K1018] BA0403; [K1025] BA0397, grid N7)

L. 50mm; H. 24mm; W. rivet-housings 13mm; Wt 15.82g; X-ray: L33, L53



46 Photography Lucy Martin, Cotswold Archaeology.

46 [K1160, K1272]

POMMEL IN GOLD OF COCKED-HAT FORM WITH GARNET CLOISSONNÉ ORNAMENT. One end found detached [K1272] (now rejoined), and without its core; a few stones missing or fractured and others sunken. Cast plain apex, the rest made of thick sheet metal (Th. 0.6mm). Paired rivet-housings each end, widely spaced, of rolled sheet; three gold rivets, full length but bent (L. 18–19mm). *Cloisonné*: an identical geometric pattern each side and on each shoulder inlaid with garnet. The design is comprised of a central mushroom-shape, surrounded by stepped cell forms and unusual eye-shaped stones, that together create an abstract facemask; borders of square and rectangular cellwork. Shoulders have single mushroom-shaped and two stepped cells each. The garnets at the pommel edges are shaped with a curved outer face. Cells backed by cross-hatched gold foils of 'standard' type. *Interior*: no sheet joins visible. *Wear/marks*: light wear overall. Apex slightly dented and scratched, and one shoulder scratched also. Cut mark and dent on one basal edge (?levered). *Set*: pommel outline matches mark on hilt-plate 280; boss-headed gold rivets 629 may also be part of this set with plate 281.

(Grid location: [K1160] BA0407, grid O14; [K1272] BA0361, grid N12)

L. 42mm; W. 17.5mm; Th. edge 3.5mm; H. 20mm; Wt 24.02g; X-ray: L3, L7, L8



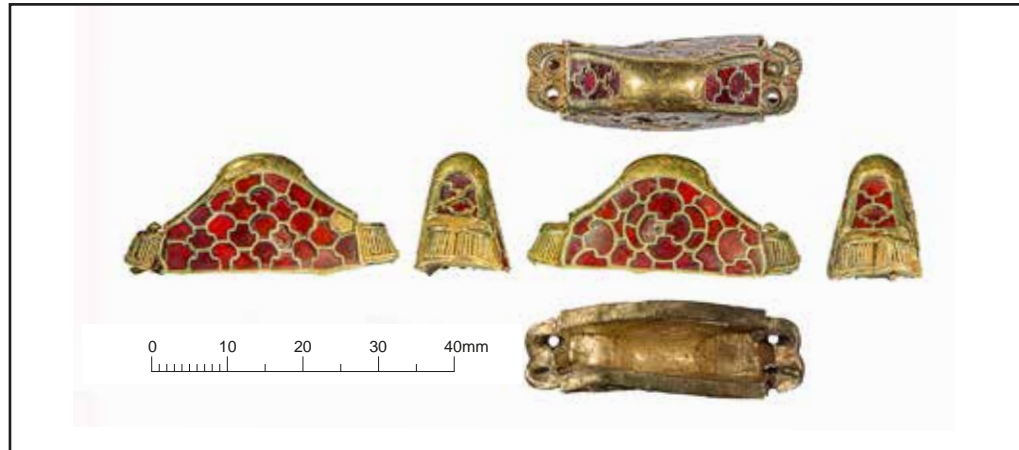
47 Photography Lucy Martin, Cotswold Archaeology. Drawing Chris Fern.

47 [K1195]

POMMEL IN GOLD OF COCKED-HAT FORM WITH GARNET CLOISSONNÉ ORNAMENT. One end twisted, some stones sunk but none lost. Plain apex and rivet-housings cast, the rest made of sheet metal. Paired rivet-housings each end, plain except for vertical reeds and minor filigree additions; one gold rivet, full length but bent (L. 19.5mm). *Cloisonné*: very similar geometric design each side, with quatrefoil arrangements of mushroom-shaped cells; frame of small rectangular paired garnets, spaced by gold lidded cells. Shoulders have lines of three mushroom-shaped cells, topped by a circular garnet. Each of the flat red garnets is backed by a cross-hatched gold foil of 'standard' type. Cellwork appears somewhat inexpert. *Filigree*: short lengths of herringbone band (formed of two-ply twisted wires) separate the rivet-holes, which have beaded wire collars. *Interior*: sheet join widthways, covered by the remains of a calcite-wax core-filler at the apex. *Wear/marks*: light wear overall. *Set*: possibly a suite with hilt-collar pair 159 and 160.

(Grid location: [K1195] BA0309, grid K13)

L. 45mm; W. 15.5mm, H. 19.5mm; Th. edge 3mm; Wt 15.66g; X-ray: L4, L7, L8



48 Photography Lucy Martin, Cotswold Archaeology.

48 [K715]

POMMEL IN GOLD OF COCKED-HAT FORM WITH GARNET CLOISSONNÉ ORNAMENT. Slightly misshapen, with one lost garnet, others sunken, and without its core. Plain apex, probably cast, the rest made of sheet metal. Paired rivet-housings each end; one gold rivet, upper part. *Cloisonné*: different geometric cellwork each side. One side shows a central mushroom quatrefoil; the other has a pattern of alternating stepped, mushroom- and arrow-shaped cells. The flat red garnets are backed by cross-hatched gold foils of 'standard' type. Shoulders have identical decoration, comprised of single lines of two mushroom shapes. *Filigree*: Rivet-housings covered by alternating beaded and plain wires, set vertically, with double collars in the same for the rivet-holes. *Interior*: joins visible at the apex. *Wear/marks*: moderate wear to the filigree; incised 'X' on underside of one of the rivet-housings.

(Note: found on site with part [K1] of cloisonné mount 544. Attached by soil: one small fragment of silver-gilt sheet, 690: [1923])

(Grid location: [K715] BA207, grid J12)

L. 36mm; W. 12mm; H. 16mm; Th. edge 3mm; Wt 9.40g; X-ray: L3, L7, L8



49 Photography Lucy Martin, Cotswold Archaeology. Drawing Chris Fern.

49 [K674]

POMMEL IN GOLD OF COCKED-HAT FORM WITH GARNET CLOISSONNÉ ORNAMENT. One side bowed out, some cells ruptured with a few stones lost or broken, and without its core. Paired rivet-housings each end; two gold rivets, full length but bent (L. 20–21mm). Constructed of sheet metal, with an additional plain sheet cap over the apex. *Cloisonné*: a different pattern each side. One side shows a central design of garnet crosses, alternating with ('stepped rhomboid') gold crosses formed using lidded cells (some sunken); two of the flat stones are red glass, opaque in appearance, and probably repairs. The other side shows a pattern of stepped, mushroom- and arrow-shaped cell-work. Shoulders have identical arrangements with mushroom-shapes also. Each cell is backed by a cross-hatched gold foil of 'standard' type. *Filigree*: edges framed by thick beaded wire; rivet-housings covered with finer beaded wire. *Interior*: no joins visible. *Wear/marks*: moderate wear to filigree and rivet heads. Apex dented and scratched. Dent on bowed edge (?levered). *Set*: possibly a suite with mounts 499–502.

(Grid location: [K674] TH076, no location)

L. 45mm (not including rivets); W. 20mm, H. 17mm; Th. edge 3mm; Wt 20.97g;
X-ray L4, L7, L8



50 Photography Guy Evans, Barbican Research Associates. Drawing Chris Fern.

50 [K292]

POMMEL IN GOLD OF COCKED-HAT FORM WITH GARNET CLOISSONNÉ ORNAMENT. Missing one end, and without its core; several stones lost. Paired rivet-housings at the intact end; no rivets. Cast plain apex, the rest made of sheet metal. *Cloisonné*: different geometric design each side. One side shows a fish-scale pattern, formed of curved-stepped cells, infilled with arrow-shaped cells. The other side has alternating rows of mushroom- and arrow-shaped garnets. Shoulders have identical lines of arrow-shaped garnets. Rivet-housings covered with two rows of small rectangular garnets; one rivet-hole retains a cap of a circular garnet. The flat red stones on the sides and shoulders are backed with cross-hatched gold foils of 'standard' type. The garnets on the edges of the shoulders, pinker in hue, were cut with a curved outer face. *Interior*: a hole in the sheet shows the cast structure of the apex. Small area of copper corrosion (?from a missing core). At the complete end two tabs attach the rivet-housings, with empty fixing-holes at the other end. *Wear/marks*: light wear overall. Dent on one basal edge from the point of a ?blade (?levered). Marks on apex ends, possibly from a tool (?tongs). *Set*: possibly a suite with hilt-collar pair **163** and **164**.

(Grid location: [K292] TH184, no location)

L. 45mm; W. 14mm, H. 18mm; Th. edge 2mm; Wt 16.00g; X-ray: L4, L29

(Note: from soil attached: fifteen small silver sheet fragments, **690**: [K1827])



51 Photography Lucy Martin, Cotswold Archaeology.

51 [K452]

POMMEL IN GOLD OF COCKED-HAT FORM WITH GARNET CLOISSONNÉ ORNAMENT. Sides slightly pinched, a few stones and foils lost, other stones broken. Plain apex, possibly cast, the rest made of sheet metal. Paired rivet-housings each end, of thick rolled plain sheet with reeded junctions; one gold rivet, full length but bent (L. 20mm). *Cloisonné*: shallow cellwork. Identical design each side of ten semi-circles arranged in fish-scale pattern, formed of curved and stepped cells. Most cells are filled by flat red garnets, interspersed by sub-triangular lidded gold cells. Shoulders have two mushroom-shaped cells each, end-to-end. The flat red garnets are backed by cross-hatched gold foils of 'standard' type. *Interior*: remains of a wooden core at the apex with a calcite core-filler. *Wear/marks*: moderate wear to apex and rivet-housings.

(Grid location: [K452] TH232, no location)

L. 46mm; W. 12mm, Th. edge 1mm; H. 19mm; Wt 16.98g; X-ray: L4



52 Photography Lucy Martin, Cotswold Archaeology. Drawing Chris Fern.

52 [K284, K327]

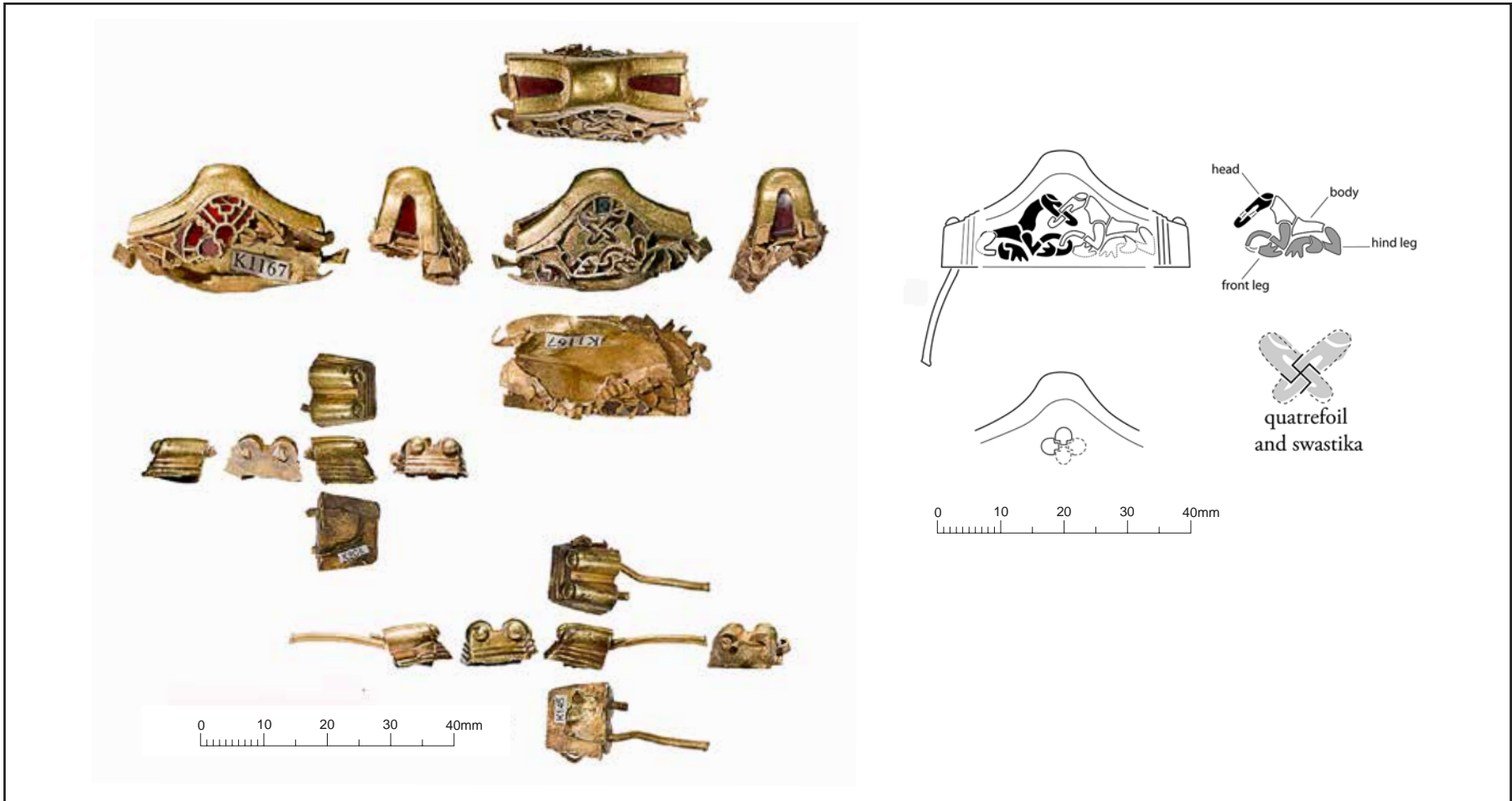
POMMEL IN GOLD OF COCKED-HAT FORM WITH GARNET CLOISSONNÉ GEOMETRIC AND ANIMAL ORNAMENT. Found in two fragments; one end twisted off is now rejoined; multiple cells ruptured with garnets/foils lost and other stones sunken. Cast plain apex, the rest made of sheet metal. Enclosed rivet-housings each end; the underside of the undamaged housing shows there were holes for two rivets each end originally. *Cloisonné*: a different design each side. One side has a geometric arrangement of rounded and triangular arches, delineated in rectilinear cellwork, and infilled with stepped and arrow-shaped cellwork, the arrows forming crosses or quatrefoils. On the rivet-housings are equal-armed garnet crosses. The other side has Style II animal ornament in cloisonné. The garnets are flat, except at the pommel edges, where stones with an angled edge were used. All the stones were backed by cross-hatched gold foils of 'standard' type. The shoulders have lines of three mushroom-shaped cells. Lidded gold cells were used both sides, especially around the animal design. *Style II*: the animal design is of two affronted creatures, quadrupeds in profile, with back-turned heads and extended forelimbs that enwrap the neck of each adversary; it is again framed

by a border of rectilinear cellwork. On the rivet-housings are beak-shaped garnets. *Interior*: sheet join lengthways. The torn open underside of one rivet-housing [K327] shows the construction. *Wear/marks*: light wear overall. One rivet-hole at the intact end [K284] is torn from extraction of the rivet.

(*Note*: found during conservation with fragment [K284]: two fragments of die-impressed silver sheet, 606: [K2096])

(*Grid location*: [K284] TH170, [K327] TH186, no locations)

L. 53mm; W. 14mm; H. 21mm; Th. edge 3mm; Wt 19.08g; X-ray: L4, L120, L133



53 Photography Lucy Martin, Cotswold Archaeology. Drawing Chris Fern.

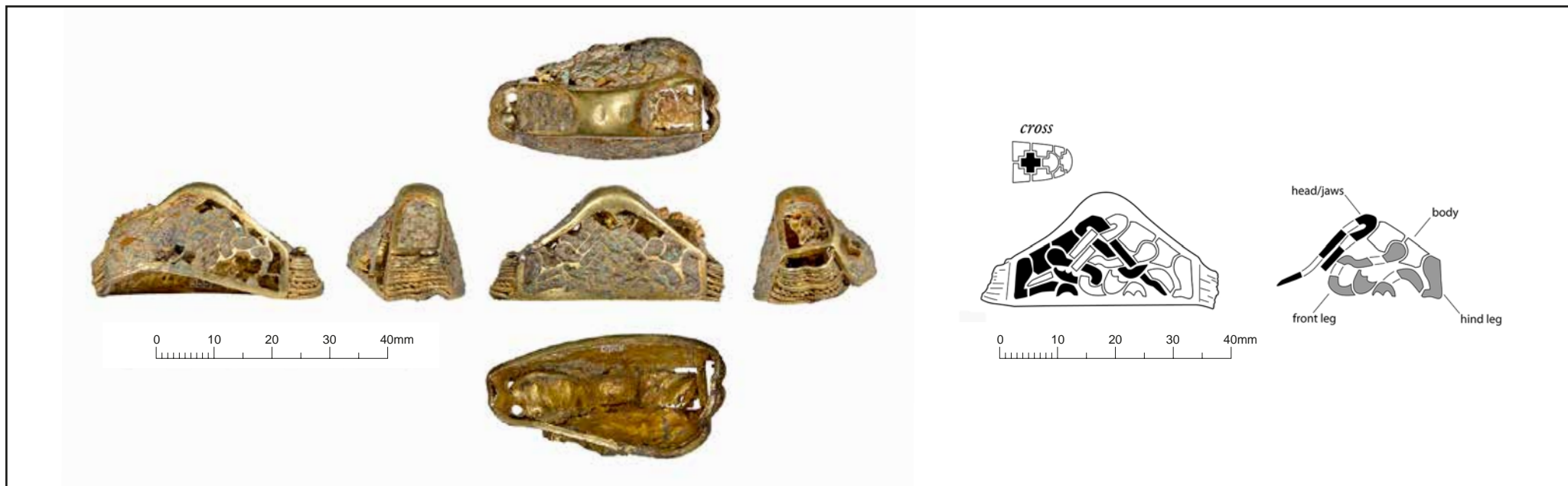
Catalogue entry next page

53 [K145, K808, K1167]

POMMEL IN GOLD OF COCKED-HAT FORM WITH GARNET CLOISSONNÉ ANIMAL ORNAMENT. Found in three fragments, the ends detached (now rejoined); basal edges badly damaged with the cellwork ruptured and multiple stones lost, fractured or sunken; and without its core. Plain apex and rivet-housings cast (with a break at the join of the apex and shoulder one side), with the remainder made of sheet metal. Paired rivet-housings each end, plain, except for reeding at the junctions with the pommel body; one gold rivet, full length (L. 22mm). *Cloisonné*: one side has geometric ornament, the other has Style II animal ornament. The geometric design is half missing, but probably included a quatrefoil of mushroom-shaped garnets centrally, as well as stepped forms. The flat red garnets were backed by two types of cross-hatched gold foils: 'standard' foils were used on the side with geometric decoration, and in the animal design for the legs and probably heads/jaws of the creatures; different 'boxed 3×3' foils were used for the neck and body parts of the animals. A square of millefiori glass (blue and red checked) is set between the creatures' heads. The shoulders have curved garnets with backing foils (pattern type obscured). Gold lidded cells were used to create the background to the animal ornament. *Style II*: the design is of two confronted creatures, quadrupeds shown in profile, their jaws interlocked and forelimbs entwined. A quatrefoil with a central swastika is formed by the crossed heads and jaws (cf. pommel 74). *Interior*: no sheet joins visible. *Wear/marks*: ?light wear overall. Scratches and dents, including to the apex.

(Grid location: [K145] US0011, [K808] BA0128, no locations; [K1167] BA0406, grid O12)

L. 32.5mm; W. 14mm; H. 17.5mm; Wt 20.31g; X-ray: L3, L53



54 Photography Aleksandra Osinska, Cotswold Archaeology. Drawing Chris Fern.

54 [K355]

POMMEL IN GOLD OF COCKED-HAT FORM WITH CLOISSONNÉ ANIMAL ORNAMENT. One side and shoulder pulled out (?levered), and without its core. Plain apex and edge-frame cast, the cellwork and rivet-housings made of sheet metal. Paired rivet-housings each end; one gold rivet, full length. *Cloisonné*: the sides have animal ornament. The shoulders have identical geometric cellwork, with stepped, mushroom-shaped and equal-armed cross forms. The cells are filled with a decayed inlay of unidentified type. *Style II*: the animal ornament is different each side (the cellwork is somewhat inexpert). One design shows two confronted creatures, quadrupeds in profile, with interwoven jaws and limbs. The other side (obscured by corrosion product) has a variation of the same motif, with the creatures transformed into zoomorphs formed of long interlacing strands. *Filigree*: rivet-housings covered by a combination of wires (beaded wires, a two-ply twisted wire, and three twisted wires that are 'unfinished' strip-twisted wires, forming herringbone pattern). *Interior*: the thin backing sheet of the pommel body is torn in places. *Wear/marks*: light wear to filigree. Apex has a slight dent. *Set*: probably a suite with hilt-collar pair **165** and **166**.

(Grid location: [K355] TH032, no location)

L. 40.5mm; W. 21mm; H. 20mm; Th. edge 1.5mm; Wt 17.40g; X-ray: L32



55 Photography Lucy Martin, Cotswold Archaeology. Drawing Chris Fern.

55 [K376]

MINIATURE POMMEL OF COCKED-HAT FORM IN GOLD WITH GARNET CLOISSONNÉ ANIMAL ORNAMENT. The enclosed base had a slot (L. 5mm W. 2mm) for the weapon tang that is torn open; the pommel body is twisted slightly with some garnets sunken. Constructed of thick sheet metal (Th. 0.6–0.8mm). A horizontal pin (missing) was housed in the pommel's broadened width (in the semi-circular side projections); the siting is visible in the exposed interior; it would have fastened through the end of the blade tang. *Cloisonné*: identical geometric cellwork both sides, including stepped, split-mushroom and other curved forms; the V-shaped cell at the apex has unusually thick walling. A band of spaced rectangular garnets runs the length of the top and shoulders. Cross-hatched gold foils of 'standard' pattern back the flat garnets. *Style II*: hidden in the geometric pattern is the zoomorphic motif of two confronted creatures, quadrupeds shown in profile, with jagged jaws. *Wear/marks*: light wear overall; tool/blade mark and scratches visible on the base. *Set*: part of a suite from a seax/knife hilt with 167, 168, 169 and 225; the cap-fitting 169 bears a scratched outline of the pommel, which was set on it, as well as corresponding damage from removal.

(Grid location: [K376] TH095, no location)

L. 29mm; W. 12.5mm; H. intact side 11mm; Wt 9.74g; X-ray: L6



56 Photography Lucy Martin, Cotswold Archaeology. Drawing Chris Fern.

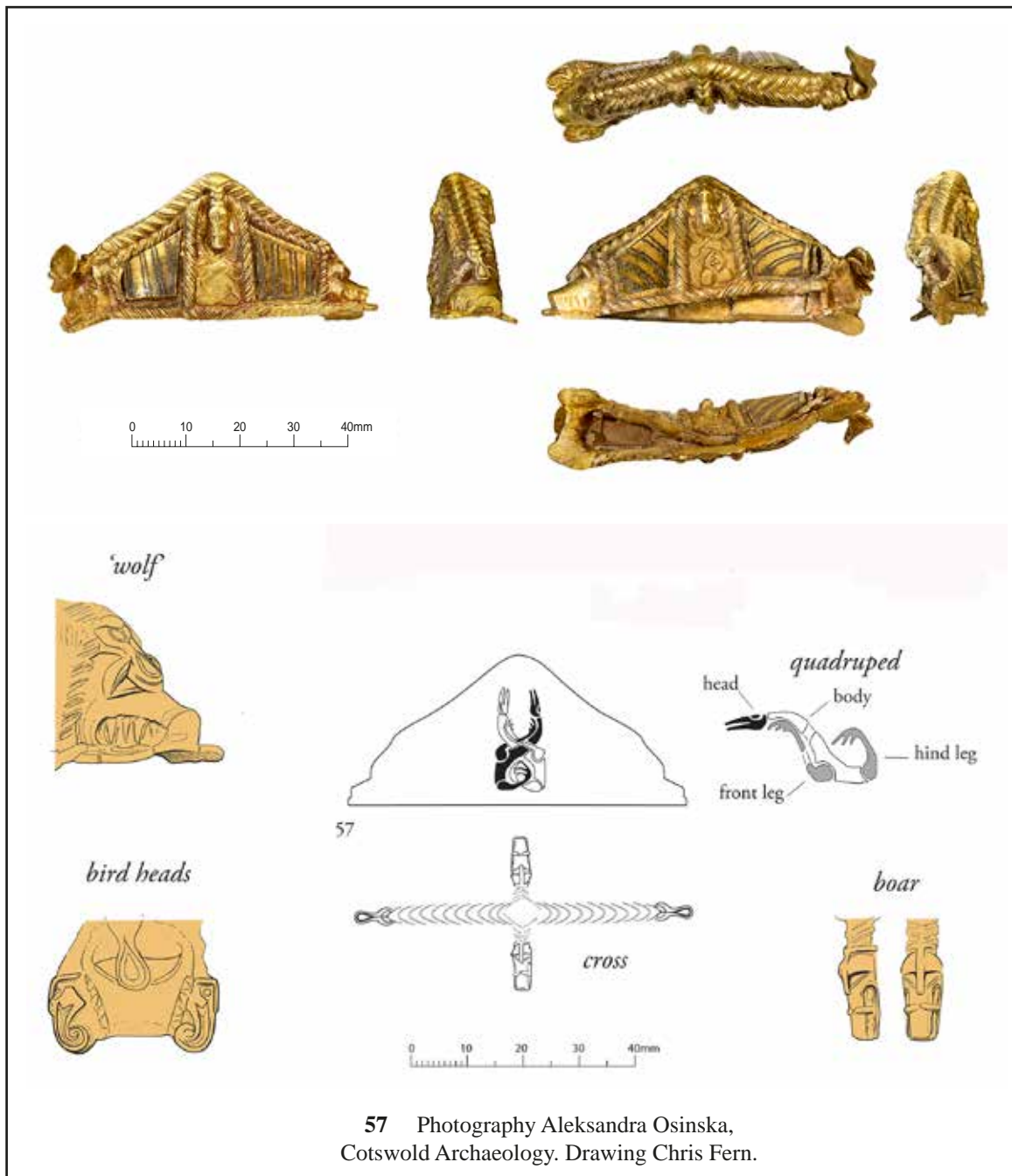
56 [K347]

POMMEL IN GOLD OF ROUND-BACK FORM WITH INCISED ANIMAL ORNAMENT, INLAID WITH NIELLO, AND WITH FILIGREE HERRINGBONE. Missing its ends (i.e. rivet-housings) and core, the sides pinched together at one end. Constructed of sheet metal, with an additional cap of plain sheet over the apex. *Style II*: identical animal ornament both sides, in each case incised out of a layer of gold sheet separately attached, forming a double-sheet thickness. The design is of two confronted creatures, quadrupeds in profile, with looped jaws; they have interlacing necks and limbs, and each bites the other. Black niello inlay outlines the body and adds details of eyes, hips and feet. *Filigree*: shoulders filled with herringbone pattern (formed of two-ply twisted wires); edges framed with flat beaded wire. *Interior*: not visible. *Wear/marks*: light wear to edges. Apex dented and torn. Horizontal marks below the apex on both sides, probably from a tool.

(*Note*: from soil in interior: one silver rivet with boss and gold boss-washer, 661: [K2088])

(*Grid location*: [K347] TH132, no location)

L. 32mm; W. 7mm; H. 17mm; Th. edge 1.5mm; Wt 6.90g; X-ray: L3, L9



57 Photography Aleksandra Osinska, Cotswold Archaeology. Drawing Chris Fern.

57 [K27, K358]

POMMEL IN GOLD OF COCKED-HAT FORM, CAST WITH ANIMAL-HEADS, INCISED WITH STYLE II ORNAMENT, WITH PANELS OF NIELLO LINES, AND ALL FRAMED BY IMITATION WIRE. Sides pinched together, one end torn and lifted (?levered); one panel [K27] found detached (now rejoined). The concave animal-snout ends indicate the pommel fitted between two bosses on its hilt-guard. A sprue scar from the casting remains at one end (on the snout), filed flat. *Style II*: the animal decoration repeats each side. The large head each end has a jagged maw, representing possibly a wolf or bear. Pairs of bird heads with curved beaks flank each of these, but are visible only from above. Surmounting the apex both sides is a boar head, depicted wearing a helmet, with tusks and a blunt snout (an alternative interpretation of the head, when viewed directly from the front, might be of a moustached warrior). Viewed from above the boar heads terminate the short arms of a cross formed by the thick imitation wire, with the long arms concluded by different heads with spoon-like snouts. These in turn form nasal guards to the 'wolf' heads. Centrally each side was incised the motif of a pair of creatures, quadrupeds in profile, with interlacing limbs and necks (the direction of interlace is different each side). *Line decoration*: the panels each side with line decoration were made and inserted separately. The black niello-inlaid patterns are different each side (in contrast with the symmetry of the animal decoration): one side the lines are vertical; the other side they curve at 45 degrees. *Interior*: hollow, with the stubs of two integral rivets each end (four in total), one cut. *Wear/marks*: light wear overall, but the apex has multiple scratches. Cut mark along one basal edge. Roughly incised lines were recorded on the pommel body behind the detached panel [K27], before reattachment; this was probably done to assist the grip of the solder/adhesive.

(Note: from soil in interior: triangular mount 491; several fragments of silver sheet, 690: [K1866, K1869])

(Grid location: [K27] BA0217, grid J12; [K358] TH096, no location)

L. 60mm; W. (bird heads) 15mm; H. 27mm; Wt 44.23g; X-ray: L11



58 Photography Lucy Martin, Cotswold Archaeology.

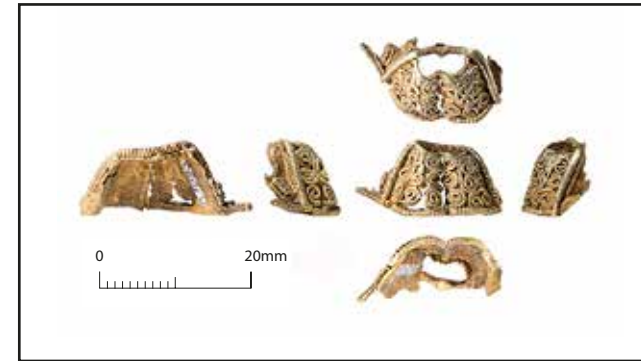
58 [K1430, ?K1466]

SMALL PART OF A POMMEL IN GOLD WITH FILIGREE ORNAMENT. Plain sheet apex and one attached shoulder panel (a further fragment with filigree [K1466] may be from this object). *Interlace*: the shoulder panel is filled by a three-twist band. *Filigree*: interlace in triple-strand beaded wire on flat sheet. *Wear/marks*: light wear overall. Apex scratched.

(Note: [K1430] part of soil block 4; [K1466] part of soil block 14)

(Grid location: soil blocks 4 and 14, no location)

L. 18.5mm; W. 7.5mm; Wt 2.06g; X-ray: L44



59 Photography Lucy Martin, Cotswold Archaeology.

59 [K1093]

FRAGMENT FROM THE END OF A POMMEL IN GOLD. A pair of rivet-housings and a small part of one side with filigree decoration; no rivets. *Filigree*: rivet-housings covered in C-scrolls of beaded wire; remnants of triple-strand beaded wire ornament on the side fragment; edges framed with beaded wire, and beaded wire collars at rivet-holes. *Interior*: sheet joins show the rivet-housings were attached separately. *Wear/marks*: moderate wear.

(Grid location: [K1093] BA0186, grid M11)

L. 17.5mm; W. 8mm; H. 10mm; Wt 1.07g; X-ray: L44



60 Photography Lucy Martin, Cotswold Archaeology.

60 [K1401]

FRAGMENT FROM THE END OF A POMMEL IN GOLD WITH FILIGREE ORNAMENT. A pair of rivet-housings; one gold rivet, upper part. *Filigree*: housings covered in herringbone pattern (formed of two-ply twisted wires). *Wear/marks*: moderate wear. Rivet cut.

(*Note*: [K1401] from soil block 7)

(*Grid location*: [K1401] soil block 7, no location)

L. 13mm; L. rivet 7.5mm; W. 5mm; H. 5mm; Wt 1.26g; X-ray: L64



61 Photography Lucy Martin, Cotswold Archaeology.

61 [K1832]

FRAGMENT FROM THE END OF A POMMEL IN GOLD. A pair of rivet-housings with filigree decoration; two gold rivets, upper parts (L. 8–9mm). *Filigree*: housings covered in herringbone pattern (formed of two-ply twisted wires), with beaded wire collars for the rivet-holes. *Wear/marks*: light wear. Rivets cut.

(*Note*: attached by soil with: pommel fragment **62**; hilt-ring fragment **237**; hilt-plate **317**; two silver reeded strip fragments, **613**: [K1836]; one gold boss, **637**: [K1831]; one silver rivet, **673**: [K1834]; seventeen very small fragments silver sheet, **690**: [K1837])

(*Grid location*: [K1832=K295] TH132, no location)

L. 10mm; H. 4mm; W. 4mm; Wt 0.83g; X-ray: L39, L41



62 Photography Lucy Martin, Cotswold Archaeology.

62 [K1833]

FRAGMENT FROM THE END OF A POMMEL IN GOLD. A pair of rivet-housings with filigree decoration; no rivets. *Filigree*: housings covered in herringbone pattern (formed of two-ply twisted wires), with a beaded wire collar for the intact rivet-hole, and a single S-scroll set between the holes. *Wear/marks*: moderate wear.

(*Note*: attached by soil with: pommel fragment **61**; hilt-ring fragment **237**; hilt-plate **317**; two silver reeded strip fragments, **613**: [K1836]; one gold boss, **637**: [K1831]; one silver rivet, **673**: [K1834]; seventeen very small fragments silver sheet, **690**: [K1837])

(*Grid location*: [K1833=K295] TH132, no location)

L. 12mm; H. 7.5mm; W. 5mm; Wt 0.60g; X-ray: L39, L41



63 Photography Lucy Martin, Cotswold Archaeology. Drawing Chris Fern.

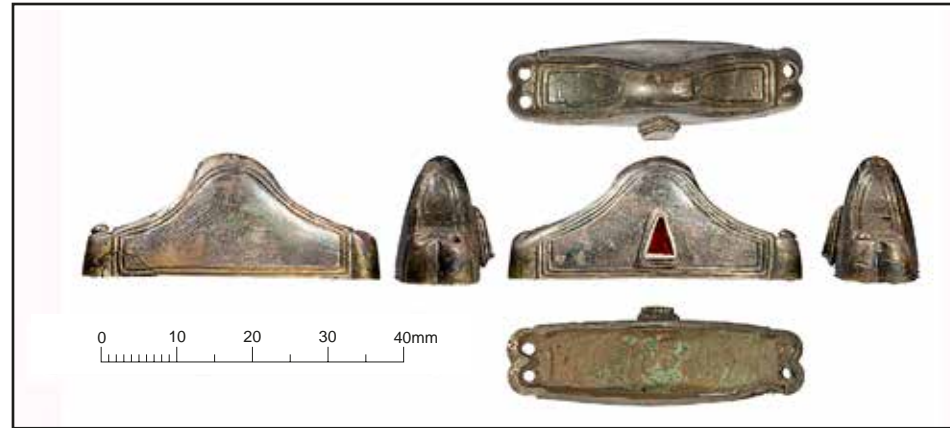
63 [K306, K1826]

POMMEL IN SILVER OF COCKED-HAT FORM WITH FILIGREE INTERLACE AND CROSS. Constructed of silver sheet over a cast silver core. Parts of the apex, one shoulder and both ends of the sheet cap are missing; two fragments [K1826] found detached are probably from the damaged side but do not join (one is very small). Single rivet-housing each end; no rivets. *Interlace/cross*: one side is a central equal-armed cross; in the corresponding position on the other side are the remains of a round frame, surrounding a void that probably had contained a gem-setting. Different non-zoomorphic interlace flanks each centre. The intact shoulder has a line of three figure-of-eights. *Filigree*: in silver; interlace/figure-of-eights in triple-strand beaded wire on flat sheet; cross in herringbone-with-spine (formed of a pair of two-ply twisted-beaded wires with a central thinner beaded wire, worn flat); gem-setting and edges framed with two-ply twisted-beaded wire with flanking beaded wires. *Interior*: core underside concave. *Wear/marks*: moderate wear at edges and apex; but the flattening of the filigree at the top of the cross was probably caused by a tool (?tongs).

(Grid location: [K306] TH191, [K1826=K287] TH152, no locations)

L. 56mm; W. 16.5mm; H. 19mm; Th. edge 3mm; Wt 27.77g; no X-ray

(Note: from soil adhering: four fragments of silver die-impressed sheet [K1847] from warrior panels 596; ten fragments [K1847] of unassociated die-impressed sheet. Two pommel fragments [K1826] found with pommel 15)



64 Photography Lucy Martin, Cotswold Archaeology.

64 [K286]

POMMEL IN CAST SILVER OF COCKED-HAT FORM WITH GILDING AND A GARNET ONE SIDE. Paired rivet-housings both ends; one silver rivet, upper part. Moulded double-line frame around each side and shoulder; the gilding was possibly restricted to this framing and the ends (i.e. sides and shoulder panels left silver). *Gem-setting*: a flat triangular garnet in a gold sheet bezel with a filigree collar of two beaded wires; the stone is backed by a cross-hatched gold foil of 'boxed 3×3' type. *Interior*: hollow, with a triangular opening cast in the body for the gem-setting (the reverse of the foil is visible). *Wear/marks*: heavy wear overall, the top of one rivet-housing and one side of the apex are particularly worn. Scratches on the apex and sides. A small fracture-dent to one edge (?levered). Cut marks on one shoulder and end.

(Note: found in conservation: one fragment of silver sheet, 606: [K1825])

(Grid location: [K286] TH189, no grid location)

L. 39mm; W. 11.5mm (13.5mm with garnet); H. 16mm; Th. edge 1.5mm; Wt 10.81g;
X-ray: L32, L41



65 Photography Lucy Martin, Cotswold Archaeology.

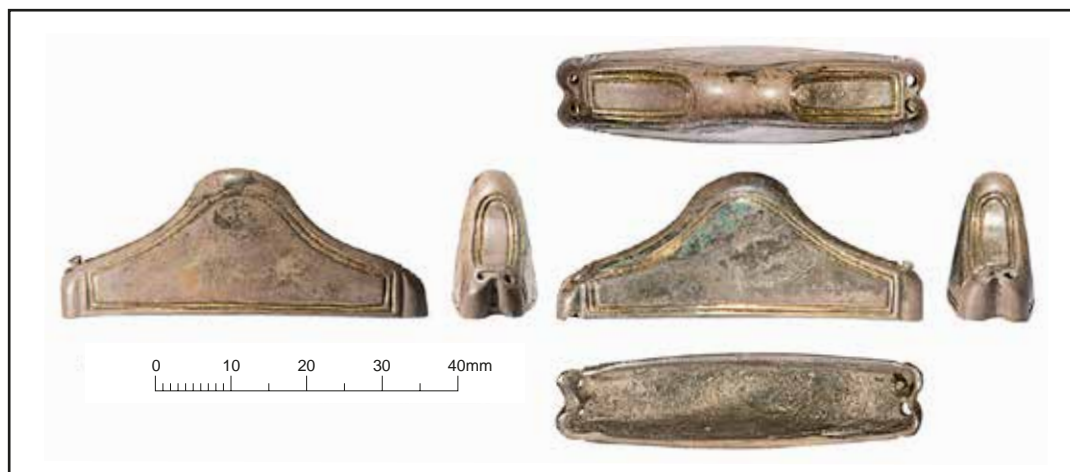
65 [K827]

POMMEL IN CAST SILVER OF COCKED-HAT FORM. Missing part of one edge (fractured, possibly by levering). Paired rivet-housings both ends; two silver rivets one end, upper parts, bent ends. Plain except for a moulded single-line frame, each side and shoulder. No gilding visible, but proved by XRF analysis. *Wear/marks*: moderate wear at apex. Scratches on sides and shoulders. Small dents one side, close to the fracture.

(*Note*: from soil in interior: gold boss **648**)

(*Grid location*: [K827] US0120, no location)

L. 39.5mm; W. 12mm; H. 16mm; Th. edge 1mm; Wt 8.18g; X-ray: L32



66 Photography Lucy Martin, Cotswold Archaeology.

66 [K456]

POMMEL IN CAST SILVER OF COCKED-HAT FORM WITH GILDING. Paired rivet-housings both ends; one silver rivet, upper part. Plain except for a moulded single-line frame around each side and shoulder; the gilding was possibly restricted to this framing (i.e. sides and shoulder panels left silver). *Interior*: hollow. *Wear/marks*: moderate wear overall, but heavy one end.

(*Note*: from soil in interior: three silver fragments [K1896] from pommel 77)

(*Grid location*: [K456] TH226, no location)

L. 48.5mm; W. 13mm; H. 19mm; Th. edge 1mm; Wt 17.27g; X-ray: L33



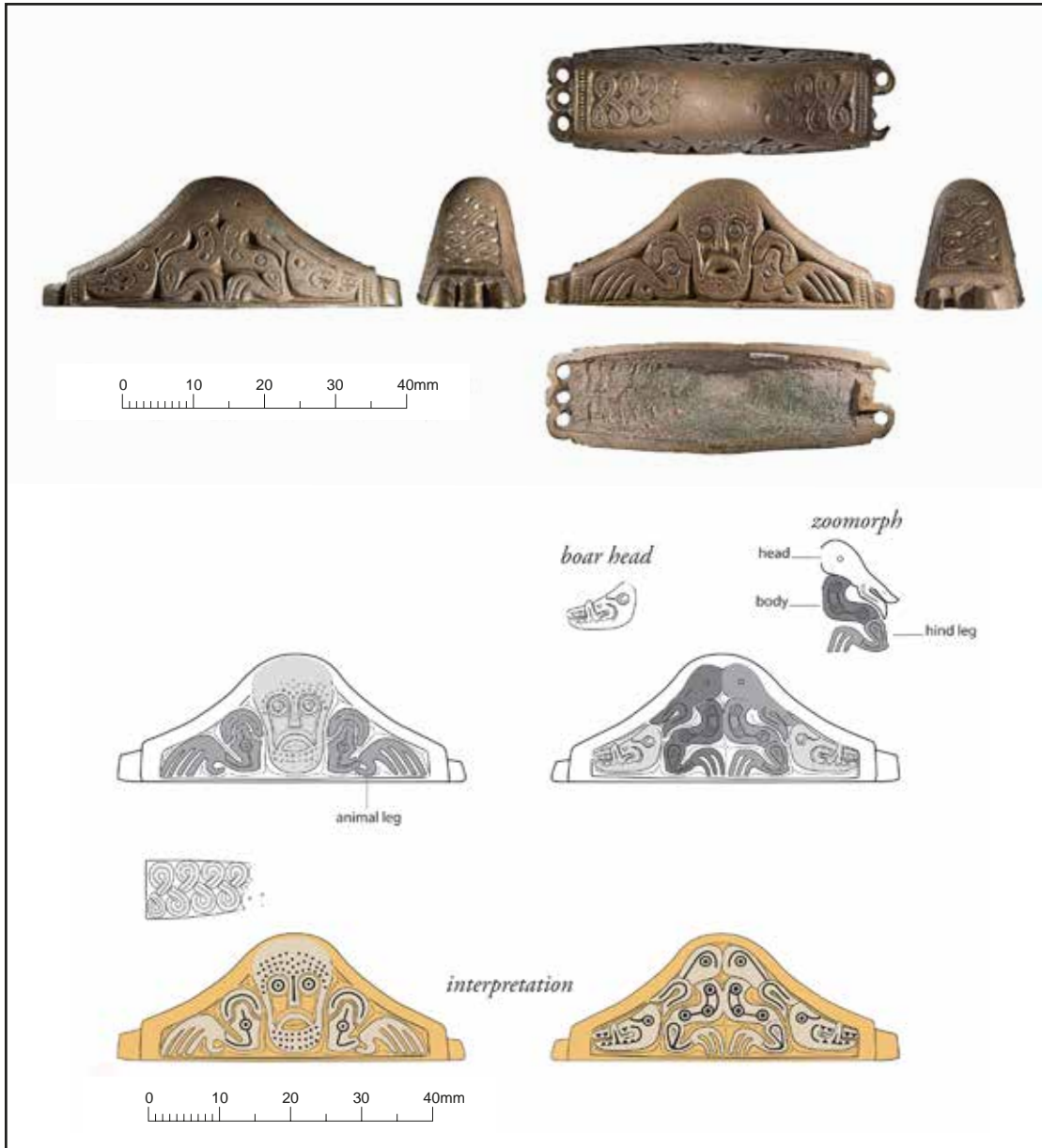
67 Photography Lucy Martin, Cotswold Archaeology.

67 [K559]

POMMEL IN CAST SILVER OF COCKED-HAT FORM. Paired rivet-housings each end; three silver rivets, upper parts. Plain, no gilding. *Interior*: hollow. *Wear/marks*: light wear. A long dent both sides, below the apex, is possibly from a tool (?tongs). Dent on one edge also (?levered).

(*Grid location*: [K559] TH040, no location)

L. 43.5mm; W. 14mm; H. 19mm; Th. edge 1.5mm; Wt 19.35g; X-ray: L10



68 [K711]

POMMEL IN CAST SILVER OF COCKED-HAT FORM WITH LOW RELIEF ANIMAL AND INTERLACE ORNAMENT, GILDING AND NIELLO INLAY. Worn and corrosion pitted. Odd numbers of rivet-housings: two at one end (one is broken and partly missing), three at the other end; no rivets. The decoration is framed by moulded beading at the pommel edges (worn away in places). *Style II*: one side shows a bearded human head between detached animal legs with froned feet. The other side has centrally two affronted zoomorphs, each with a single hind leg and a back-turned head with U-shaped jaws (the detail is very worn at the apex); in the corners are the heads of boars with characteristic tusks and blunt snouts, with a triangular punch used for the teeth. The black niello inlay, like the gilding, is now largely lost, but was used to highlight the details of the eyes, boar teeth, the hair of the head/beard, and to infill body parts. It is not certain the gilding totally covered all surfaces, and it is possible the human and animal characters were left silver, creating a bichrome finish. *Interlace*: the shoulders are filled with looping geometric interlace with a central niello strand (the patterns are rotated 180 degrees, relative to each other). *Interior*: hollow. *Wear/marks*: heavy wear to the apex and edges. *Set*: possibly a fit with sword-ring **82**.

(Note: found on site with hilt-plate fragment **351**)

(Grid location: [K711] BA0202, grid L12)

L. 49mm; W. 16mm; H. 18mm; Th. edge 2mm; Wt 19.87g; X-ray: L10

68 Photography Lucy Martin, Cotswold Archaeology. Drawing Chris Fern.



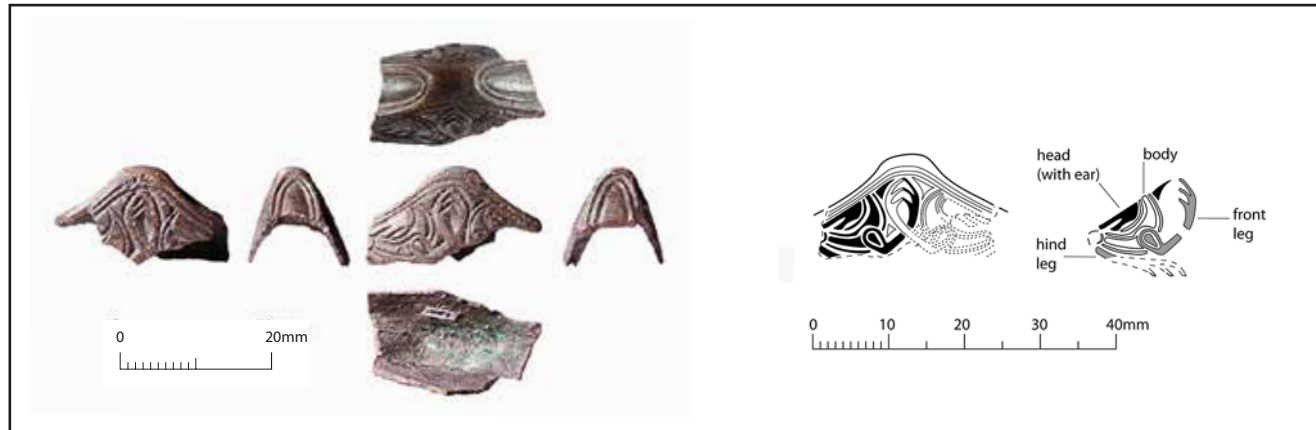
69 Photography Lucy Martin, Cotswold Archaeology. Drawing Chris Fern.

69 [K39, K1007]

POMMEL IN CAST SILVER OF COCKED-HAT FORM WITH LOW RELIEF ANIMAL ORNAMENT, GILDING AND NIELLO INLAY. Found in two fragments (rejoined), missing one side and part of one end (breaks old). Paired rivet-housings each end (broken one end); three silver rivets, upper parts. The gilding survives in the recesses. *Style II*: the remaining side shows animal ornament, of two affronted zoomorphs with interlacing jaws and bodies. The shoulders possibly had similar creatures (obscured by corrosion). The black niello was inlaid in channels along the individual strands. *Interior*: hollow. *Wear/marks*: moderate wear overall. Damage to the side edge (?levered). Flattening at the apex, possibly from a tool (?tongs). *Set*: possibly a suite with hilt-collars **186–187** and mounts **533–535**.

(Grid location: [K39] BA0231, grid J12; [K1007] BA0079, grid M11)

L. 47mm; W. 10.5mm; H. 15mm; Th. edge 2mm; Wt 9.37g; X-ray: L42, L140



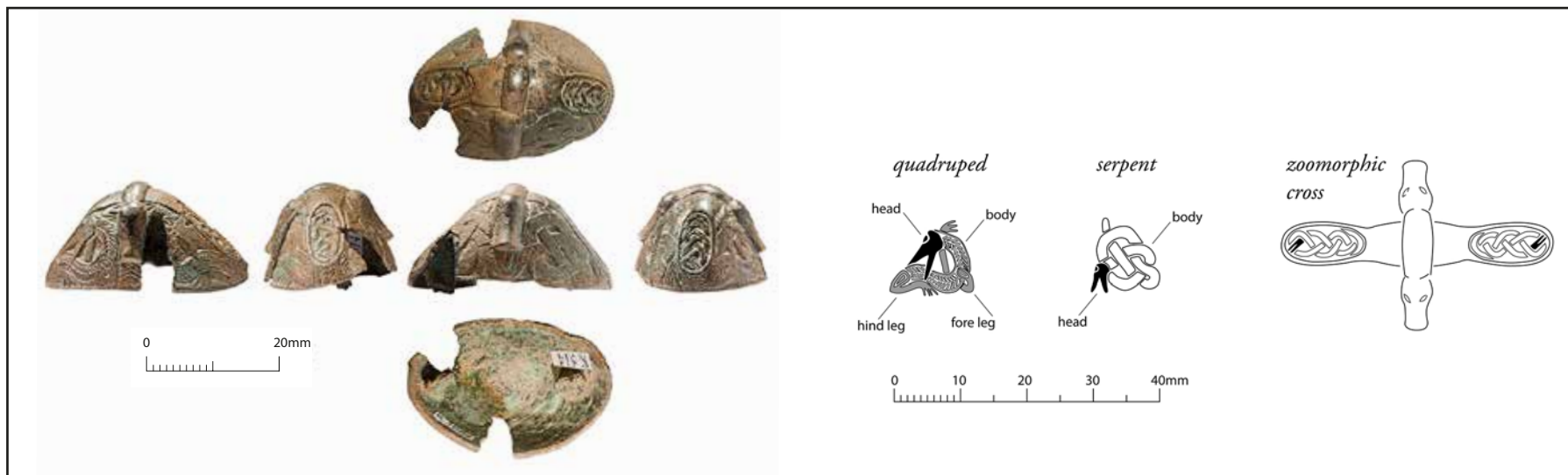
70 Photography Lucy Martin, Cotswold Archaeology. Drawing Chris Fern.

70 [K150]

FRAGMENT OF A POMMEL IN CAST SILVER OF COCKED-HAT FORM WITH LOW RELIEF ANIMAL ORNAMENT. Apex with parts of both sides and shoulders. No gilding (confirmed by analysis). *Style II*: possibly identical animal ornament each side originally, showing two affronted creatures (probably quadrupeds) with interwoven forelimbs and back-turned heads. Shoulders plain except for moulded line framing. *Interior*: hollow. *Wear/marks*: light wear.

(Grid location: [K150] US0016, no location)

L. 23mm; W. 13mm; H.13mm; Th. edge 1mm; Wt 2.57g; X-ray: L34



71 Photography Lucy Martin, Cotswold Archaeology. Drawing Chris Fern.

71 [K514, K1684, K1901]

POMMEL IN CAST SILVER OF ROUND-BACK FORM WITH AN ANIMAL-HEADED BAND AND INCISED ORNAMENT. Found in three fragments (rejoined, breaks old), small parts of both sides missing. Gilded originally (detected by XRF analysis). *Style II*: the apex is surmounted by a band with terminals in the form of boar heads with blunt snouts (but tuskless) and incised almond-shaped eyes. The rest of the hemispherical surface bears incised animal ornament separated by bands of herringbone pattern. One side shows two quadruped creatures affronted but separated, with heads that bite their own herringbone-filled bodies; the other side shows a mirrored pair of confronted, knotted serpents. Further identical interlaced serpents occupy oval panels on the shoulders (the patterns rotated 180 degrees). A zoomorphic cross is formed, viewed from above, by the animal-head band and shoulder panels. *Interior*: hollow, one cast-in rivet each end, both broken. *Wear/marks*: light wear. One edge has a dent (?levered). *Set*: probably a suite with hilt-collar fragments **189** and silver fragments **605**.

(Grid location: [K514] TH214, [K1901=K495] TH217, no locations)

L. 31mm; W. 22mm; H. 15mm; Th. edge 1.5mm; Wt 10.43g; X-ray: L28, L106

(Note: [K1684] part of soil block K512)



72 Photography Lucy Martin, Cotswold Archaeology. Drawing Chris Fern.

72 [K240, K1447, K2092]

POMMEL IN CAST SILVER OF ROUND-BACK FORM. Found in four fragments (three rejoined; breaks old). Two rivet-holes at the remaining end; no rivets. No gilding. *Rune*: lightly incised centrally one side is a possible rune mark, though it is faint and difficult to distinguish from other scratches. *Interior*: hollow, cast surface visible, including flashing; copper corrosion (from alloy). *Wear/marks*: light wear. Dent/?tool mark on shoulder. Filing marks on basal edge.

(Note: [K1447] part of soil block 10; [K2092=K1615] part of soil block 16)

(Grid location: [K240] TH179, soil blocks 10 and 16, no locations)

L. 48.5mm; W. 14.5mm; H. 21mm; Th. basal edge 1.5mm; Wt 17.12g; X-ray: L43, L64



73 Photography Lucy Martin, Cotswold Archaeology. Drawing Chris Fern.

73 [K294]

POMMEL IN CAST SILVER OF ROUND-BACK FORM WITH LOW RELIEF GILDED INTERLACE, AND ONE SIDE A GOLD MOUNT WITH FILIGREE AND CLOISSONNÉ ORNAMENT. Paired rivet-housings each end; one silver rivet, upper part. *Cast interlace*: one side has a panel of dense triple-strand interlace. *Filigree/cloisonné*: the other side has a mount of gold sheet. At its centre is a simple cloisonné design, of a circular red garnet flanked by beak-shaped garnets; the flat stones are backed with cross-hatched gold foils of 'standard' type. It is flanked by filigree interlace formed of triple-strand beaded wire, with collared granules beneath the garnet 'beaks'; beaded wire also edges the inner frame and cloisonné setting; a thicker two-ply twisted-beaded wire forms the outer border. The top of the pommel is inlaid with a filigree herringbone band (formed of two-ply twisted wires). *Style II*: it is possible the filigree interlace on the mount together with the cloisonné beaked-roundel was intended as an animal design that could be 'read' as a pair of creatures with interchangeable beaked heads. *Interior*: four bent nails, three for securing the side filigree mount and one for the top filigree band. *Wear/marks*: light overall, moderate to the filigree band. A triangular punch was applied haphazardly over one side and the top.

(Grid location: [K294] TH167, no location)

L. 52mm; W. 14mm; H. 14mm; Th. edge 1.5mm; Wt 22.35g; X-ray: L10

(Note: found during conservation: one silver nail/rivet fragment, 675: [K1830])



74 Photography Lucy Martin, Cotswold Archaeology. Drawing Chris Fern.

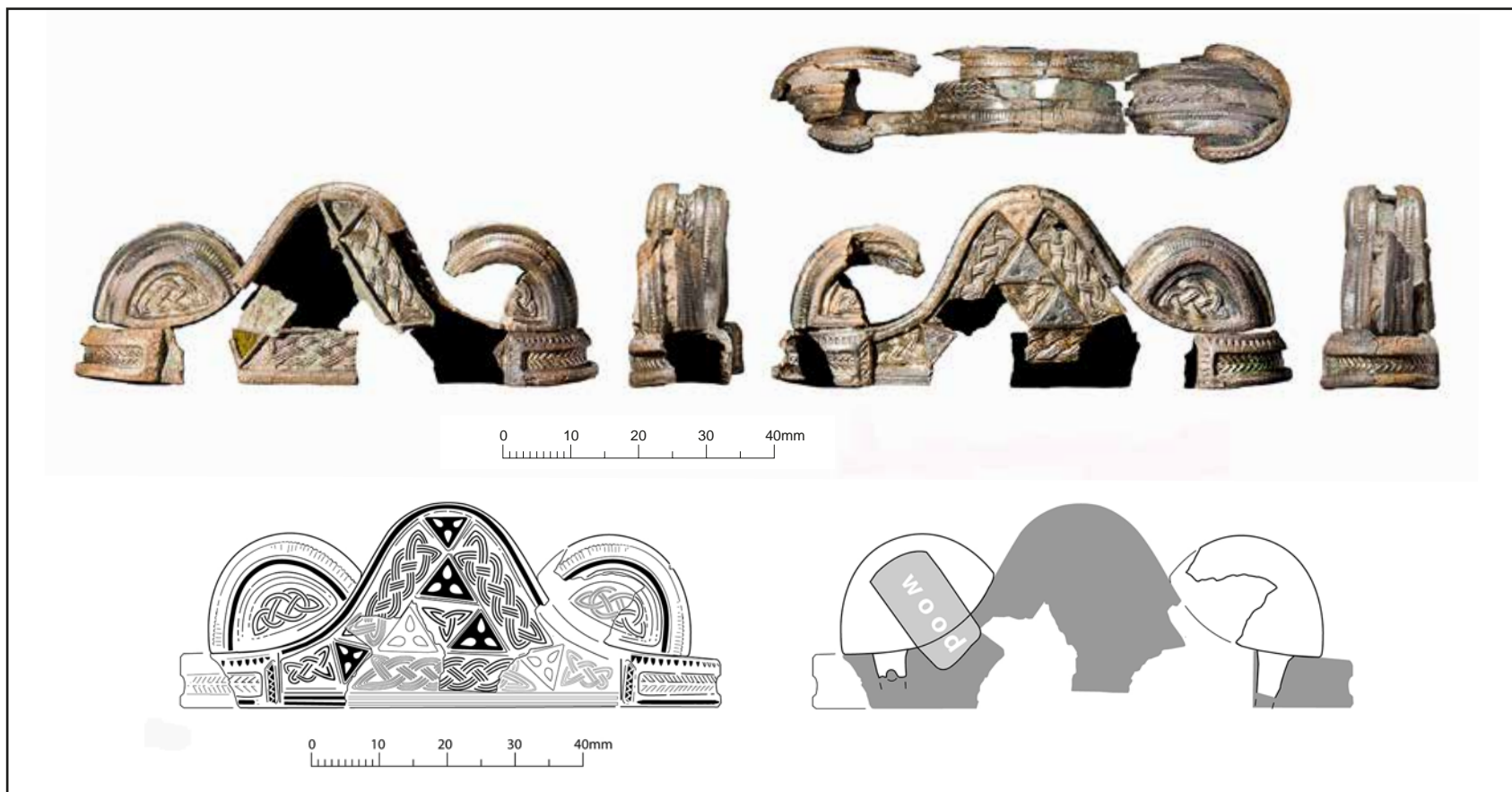
74 [K5, K596, K597, K604, K1374, K1968]

POMMEL IN CAST SILVER OF ROUND-BACK FORM WITH INCISED AND GILDED ORNAMENT, AND GOLD FILIGREE MOUNTS. Found in six fragments (five rejoined); missing one shoulder (with mount), parts of both sides/apex and one end. Paired rivet-housings each end (broken one end); no rivets. *Interlace*: one side is incised with a quatrefoil knot (with swastika) in a single line frame (gilded). *Filigree mounts (scrollwork)*: the other side had an inserted semi-circular mount (L. 29mm) of gold sheet [K5] that was fixed in place by sheet tabs that extend beyond its frame. It is divided into zones by a curving band and straight element, both in triple-strand filigree. The two largest curved zones are filled by S-scrolls in beaded wire; the mount edges are framed by plain wire; the reverse has been repoussé worked to enhance the design. The shoulder has a smaller *in situ* mount filled with a curved band of triple-strand filigree. *Interior*: the reverse of the shoulder mount is visible through a void cast in the shoulder; it shows the same method of fixing with tabbed edges. *Wear/marks*: moderate wear to the filigree and cast shoulder.

(Grid location: [K5] BA0198, [K596, K597, K604] TH021, [K1374] TH247 [K1968=K1347] TH243, no locations)

L. 40.5mm; W. 15mm; H. 15mm; Th. edge 1.5mm; Th. sheet <0.5mm; Wt 8.30g (gold mount Wt 1.22g); X-rays: L37, L42, L44, L101, L102, L124

(Note: fragment [K1968] attached by soil to: silver fragment [K1347] from hilt-collar **182**; silver fragment with interlace [K1969] from hilt-guard pair **409**; fragment [K1973] from helmet-crest **590**; one silver fragment, **688**: [K1971]; one silver fragment, **687**: [K1972]; fragments of silver sheet, **690**: [K1970]. Mount [K5] found on site with fragment [K714] of pommel **11**)



75 Photography Lucy Martin, Cotswold Archaeology. Drawing Chris Fern.

Catalogue entry next page

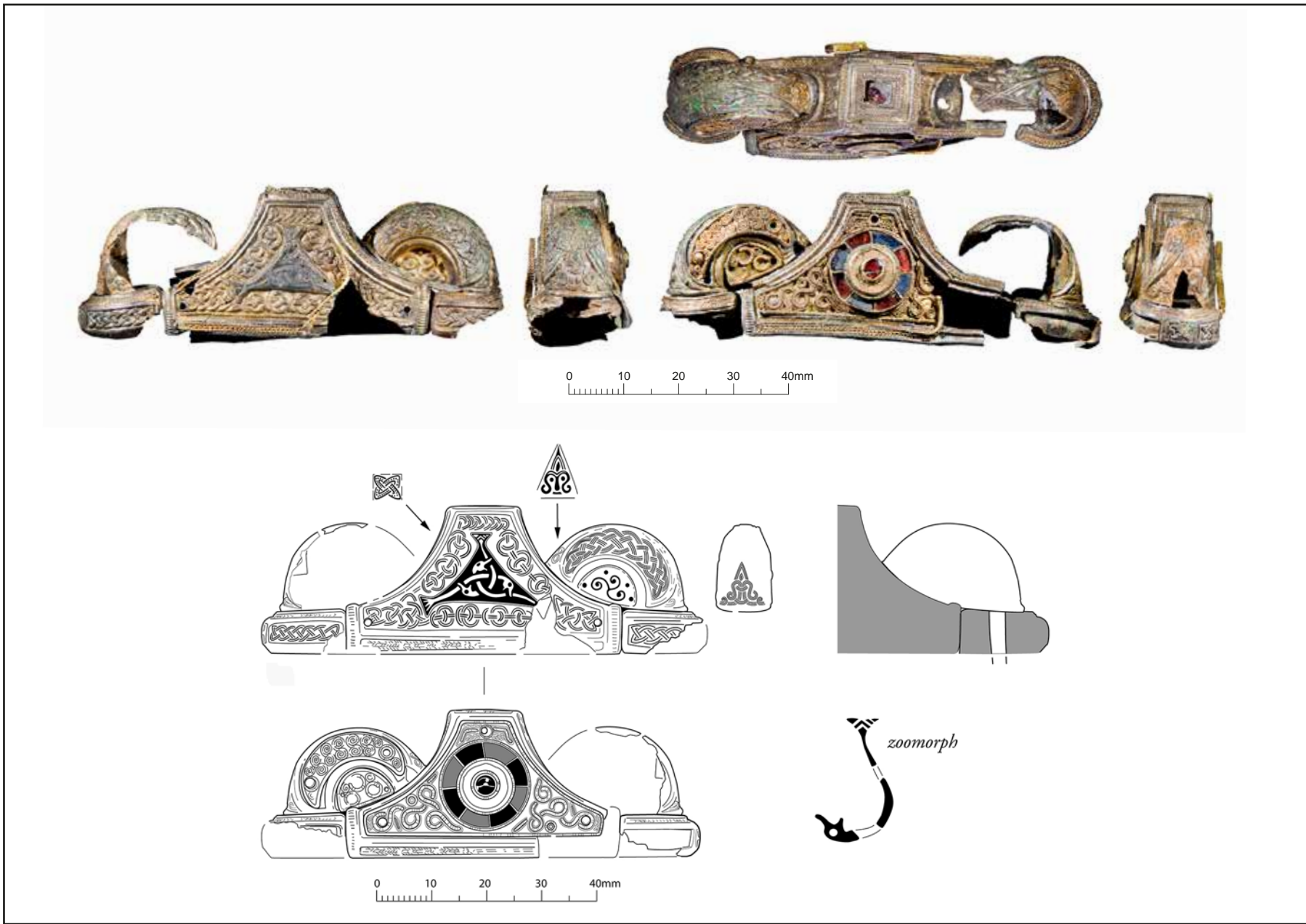
75 [K20, K163, K290, K530, K744, K903, K904, K907, K942, K983, K1112, K1185, K1204, K1376, K1726]

POMMEL IN CAST SILVER OF COCKED-HAT FORM WITH DOUBLE SWORD-RINGS, CAST INTERLACE, NIELLO AND GLASS ORNAMENT. Incomplete, assembled from fifteen fragments: nine from the sides/shoulders; three from single cylindrical rivet-housings each end; three from two sword-rings, one for each shoulder (one [K290] is almost complete). The sword-rings were cast separately, each with a single square-sectioned shank (both broken, L. 6mm); that projecting from [K290] has a fixing-hole. *Cast decoration*: both sides of the pommel and sword-rings have sunken gilded panels filled with double/triple-strand interlace, densely woven and regular; sunken bands of gilded herringbone decorate the rivet-housings. At the centre of the more-complete side of the pommel is a triquetra knot. Surrounding it and juxtaposed with the other interlace panels the same side are raised triangles detailed with triple silver teardrops on backgrounds of black niello. The same black inlay also originally framed the unglilded pommel edges and filled a dog-tooth edging on the rivet-housings. *Gem-settings*: the other side of the pommel has corresponding triangular settings, one of which retains an inset of translucent green glass; probably all were similarly furnished. *Filigree*: a channel runs over the top of the pommel and sword-rings, filled by remains of a thick herringbone band in silver (formed of two-ply twisted wire). On the sword-rings the channel is flanked by moulded beading. *Interior*: hollow, the casting is relatively thin in places. A dowel of wood (*Fraxinus excelsior*) survives fixed in the interior of one sword-ring [K290]; it fits into a slot in the pommel body. *Wear/marks*: light wear overall, moderate on the top of one sword-ring [K290]. *Set*: possibly a suite with hilt-collar pair **188** and hilt-guard pair **409**.

(*Note*: fragment [K744] part of finds group BA0203; fragments [K903, K904] part of finds group BA1038; fragment [K942] part of finds group BA1051; fragment [K1185] found with fragment **688**: [K1193]; fragment [K290] found with one fragment of socket **607/08**: [K2188]; fragment [K1726] part of soil block 15)

(*Grid location*: [K20] BA0228 grid L12; [K983] BA0259, grid M11; [K1112] BA0440, grid N6; [K1185] BA0307, grid M14; [K1204] BA0322, grid N11. No grid locations: [K163] US0029, [K290] TH147, [K530] TH214, [K744] BA0203, [K903, K904] BA1038, [K907] BA1050, [K942] BA1051, [K1376] TH244, [K1726] soil block 15)

L. rejoined body fragment 50.5mm (est. original L. 80mm); W. body 12.5mm. W. rivet-housing 18.5mm; H. 30mm; Th. edge 1–1.5mm; Wt 30.16g (includes wood 0.41g); X-ray: L42, L95, L104, L116, L125, L139



76 Photography Lucy Martin, Cotswold Archaeology. Drawing Chris Fern.

76 [K98, K242, K291, K301, K807, K831, K964, K1087, K1384, K1385, K1445, K1483, K1623, K1629, K1631, K1640, K1641, K1642, K1649, K5014, K5065]

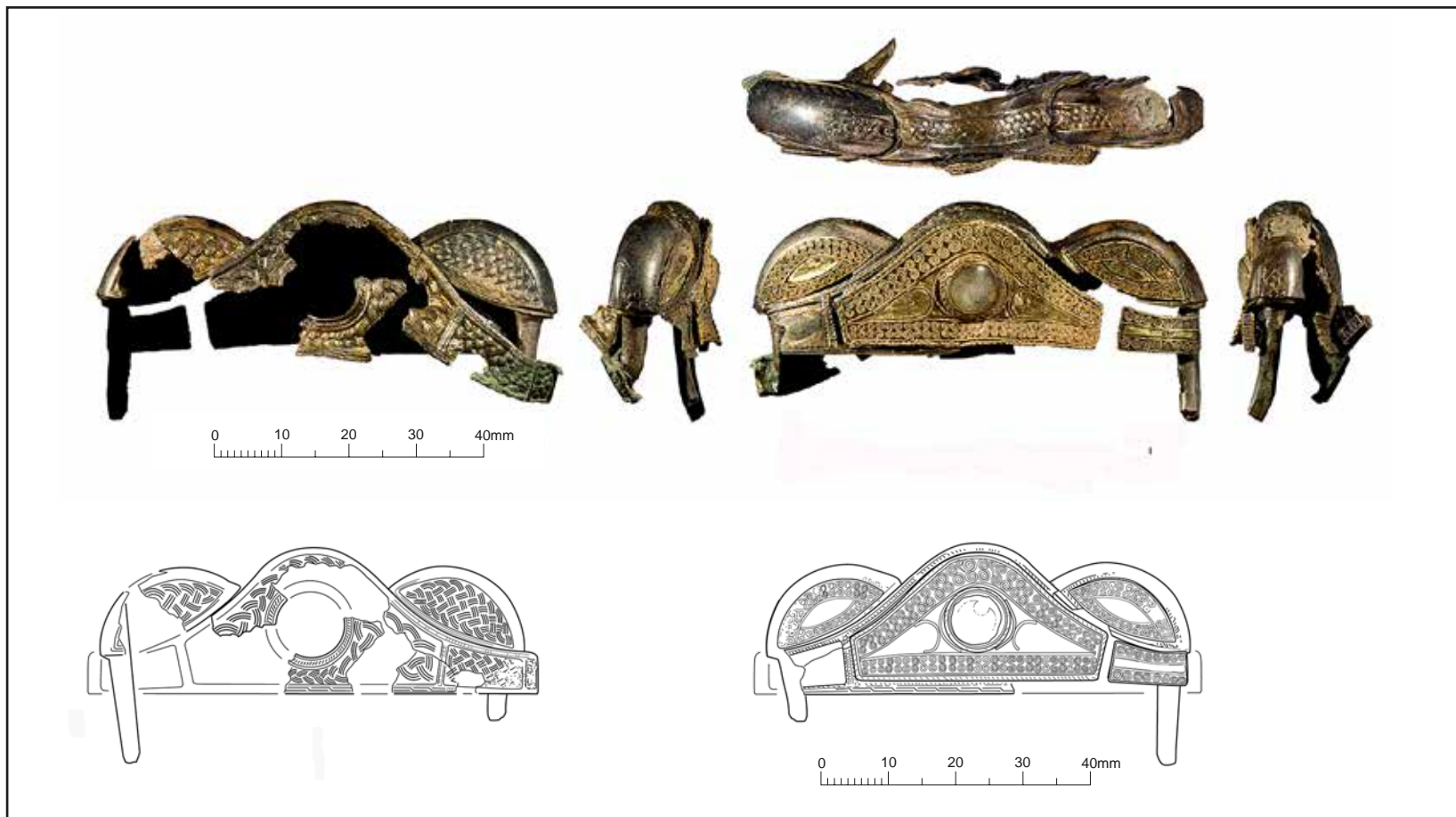
POMMEL IN CAST SILVER OF COCKED-HAT FORM WITH DOUBLE SWORD-RINGS, CAST INTERLACE AND NIELLO INLAY, AND MOUNTS WITH CLOISSONNÉ AND FILIGREE ORNAMENT. Incomplete, assembled from twenty-six fragments (old and recent breaks). Separately cast in five parts: pommel body; one cylindrical rivet-housing each end; one 'sword-ring' each shoulder (only a small part survives of one). The structure was held together by a large single rivet each end cast into the interior of each sword-ring; the longest surviving shank (L. 9mm) is broken/?cut level with the base of the rivet-housing. *Cast decoration*: zones of cast and gilded ornament in low relief decorate one side of the pommel and the sword-rings, and the top/shoulders of all; the pommel edges and parts of the ornament were left unglided for contrast. Double/triple-strand interlace predominates, with dot-infilled quatrefoil knots on the shoulders. The ends of the complete sword-ring show masks; the centre has a scrolled triskelion in a sunken panel. Small panels of *faux* cellwork, niello inlaid, are at the ends of the rivet-housings. *Gem-setting*: on the flat apex, in a square frame of imitation twisted wire, is a flat purplish-pink garnet (fractured). It was backed by a cross-hatched silver foil of 'standard' type. *Style II*: at the centre of the pommel, on the side with cast interlace, is a triangular platform, with smaller triangles at its vertices, bearing a design in silver of three serpent-like creatures with fan tails arranged in a triquetra, on a field of black niello. The inlay also decorated the tops of the sword-rings. *Filigree/cloisonné mounts*: the other side was originally decorated with seven gold sheet mounts, attached by small rivets, of which three remain. The largest [K301] (H. 20mm) fills the frame of the pommel body (one end is bent); two silver pin heads remain *in situ* in the corners. It has a central cloisonné roundel with an outer ring of flat garnet and blue glass insets, forming cryptic crosses (on an angle); the garnets are backed by cross-hatched foils of 'standard' type; filling the middle is a ring of decayed colourless glass, set in a round bezel with a frame of beaded wire; central to it is a cabochon garnet (fractured) in another beaded-wire bezel. Looping interlace, in filigree triple-strand beaded wire, flanks the cloisonné roundel, together with annulets (of two beaded wires) and short strands of herringbone (of two-ply twisted wire); the sheet backing was repoussé worked between the design. Two smaller filigree mounts decorate the intact sword-ring: one is crescentic [K807] (L. 19.5mm) and one is semi-circular [K1629] (L. 10.5mm); one gold pin remains *in situ* with the crescentic mount, which is filled with S-scrolls of beaded wire; the semi-circular mount is filled with annulets in the same. The mount's edges and the roundel are framed in beaded wire. Filigree herringbone bands were also inlaid in cast channels (some lifted/frayed) on the edges of the pommel and rivet-housings. *Interior*: a large

fragment of the original wax core survives from the pommel, now loose; it bears an impression at its top from the cross-hatched foil that backed the apex garnet. The cast structure of the pommel appears thin. *Wear/marks*: light wear to edges, and to the top of the more complete sword-ring. *Set*: possibly a suite with hilt-collar pair **188** and hilt-guard pair **409**.

(*Note*: fragment [K98] found on site with one fragment of silver reeded strip, **607/08**: [K99]; fragment [K831] found on site with one fragment of silver sheet panel **600** and two fragments of reeded strip, **613**: [K832]; [1445] part of soil block 8; [K1483] part of soil block 15; [K1623, K1631, K1640, K1641, K1642, K1649] part of soil block 17; [K1384, K1385] part of soil block 18)

(*Grid location*: [K98] BA0045a, grid L11; [K807] BA0118, grid L9; [K964] BA0243, grid M8; [K1087] BA0183, grid K12; [K5014] grid L12; [K5065] grid H9. No grid locations: [K242] TH179, [K291] TH181, [K301] TH156, [K831] US0122, soil blocks 8/15/17/18)

L. rejoined body fragment 48mm (est. original L. 80mm); W. body 20.5mm; W. rivet-housing 17.5mm; H. 27mm; Th. edge 1.5mm; Wt 37.40g (gold mounts Wt c. 5.00g; wax core Wt 1.82g); X-ray: L43, L69, L80, L94, L126, L127, L140



77 Photography Lucy Martin, Cotswold Archaeology. Drawing Chris Fern.

Catalogue entry next page

77 [K136, K149, K189, K417, K536, K876, K908, K994, K1337, K1403, K1448, K1896, K2093, K2158, K5090]

POMMEL IN CAST SILVER OF COCKED-HAT FORM WITH DOUBLE SWORD-RINGS, GILDED INTERLACE ORNAMENT, GOLD MOUNTS WITH FILIGREE, AND GEM-SETTINGS. Incomplete, including missing one end and much of the other (i.e. rivet-housings), found in seventeen fragments, some twisted (possibly from removal). The 'sword-rings' [K149, K189, K1448], one on each shoulder, were cast separately with one large rivet each (largest L. 17mm); both are broken and bent. *Cast decoration*: one side has cast triple-strand interlace separated into panels and surrounding a round frame at the centre. A band of similar interlace (worn) runs over the top of the pommel and rings. *Filigree mounts (scrollwork)*: the other side of the pommel has four mounts made of gold sheet (a fifth original mount is missing): the largest [K136] (L. 38mm) and one other [K5090] (L. 12mm) were set on the pommel body; two smaller eye-shaped mounts [K876, K1403] (L. 17–18mm) decorate the sword-rings. All have bands of S-scrolls. The large mount is framed by two-ply twisted-beaded wire; single-ply beaded wire forms the scrolls, delineates the bands and frames the other mounts. The central part of each mount was set in relief by repoussé working from the reverse. *Gem-settings*: centrally on the large gold mount is a cabochon rock crystal, in a plain bezel with a filigree collar (formed of a central two-ply twisted-beaded wire flanked by thinner beaded wires); the stone is set over a fixing-hole. Another gem-setting (missing its stone) was located correspondingly on the other side, as indicated by the partly surviving cast frame. *Interior*: one sword-ring [K189] contains remains of a pewter core and also has beeswax, possibly as a fill; beeswax was identified in the other sword-ring also [K1448], and it is likely it has a metal core too, but covered by the wax. *Wear/marks*: the tops of the sword-rings show heavy wear; moderate wear to the filigree (a few scrolls missing). Apex dented, possibly from a tool (?tongs).

(*Note*: fragment [K417] found with one small fragment of silver **690**: [K1889]; fragments [K2093, K2158] part of finds group BA0203; fragment [K908] found with two fragments of silver sheet [K909, K910]; fragment [K1403] part of soil block 7; sword-ring [K1448] part of soil block 10; fragment [K1896] found in soil inside pommel **66**; [K5090] found with mount **515**)

(*Grid location*: [K994] BA0293, grid L14; [K5090] grid F10. No grid locations: [K136] US0002, [K149] US0015, [K189] US0055, [K417] TH127, [K536] TH214, [K2093=K762, K2158=K763] BA0203, [K876] US0133, [K908] BA1045, [K1337] TH242, [K1896=K456] TH189, soil blocks 7/10)

L. 67mm; L. large mount [K136] 38mm; W. 13mm; H. 28mm; Th. edge 1.5mm; Wt 19.62g (gold mounts 2.97g); X-ray: L4, L7, L8, L9, L42, L43, L47, L64, L80, L98, L125, L140



78 Photography Lucy Martin, Cotswold Archaeology. Drawing Chris Fern.

78 [K825]

END FRAGMENT FROM A POMMEL IN CAST SILVER WITH GILDED LOW RELIEF DECORATION. Enclosed rivet-housing with a cast-in rivet stub projecting from the underside (L. 4mm). *Style II*: on each side of the bulbous rivet-housing is a bird head with a curved beak. *Interlace*: the small remaining portions of the side and shoulder have irregular interlace (?Style II) with niello inlay; too little survives to make sense of the pattern. *Interior*: hollow. *Wear/marks*: moderate wear.

(Grid location: [K825] US0118, no location)

L. 20mm; W. 11mm; H. 10.5mm; Th. edge 1.5mm; Wt 2.78g; X-ray: L42



79/84 Photography Lucy Martin, Cotswold Archaeology.

79/84¹ [K247, K1625]

SWORD-RING IN CAST SILVER. Two parts: a plain squat ring-rivet in a collar. Ring-rivet has a hollow underside; rivet broken (L. 7.5mm), with a square shank. D-shaped collar has one small and one large hole (for the rivet), with a raised band around the edge. Ungilded. *Wear/marks*: moderate to one edge of ring-rivet.

(Note: [K1625] part of soil block 17)

(Grid location: [K247] TH179, [K1625] soil block 17, no locations)

L. 11mm; W. 12mm; H. 14mm; Wt 3.15g; X-ray: L43–44

¹ The relationship of the parts of sword-rings 79/84 and 80/81/83 was only realised late in 2016, when cataloguing was at an advanced stage, thus the original catalogue numbers are retained.



80/81/83 Photo Lucy Martin, Cotswold Archaeology.

80/81/83 [K531, K626, K627]

SWORD-RING IN SILVER. Three parts: a plain squat silver ring-rivet in a U-shaped ?silver collar with a silver sheet covering (edges corroded and delaminating). Ring-rivet ?complete, plain and bulbous ring, traces of gilding on the underside; rivet has a round-faceted shank (L. 16mm; Diam. 2.5mm).

(Grid location: [K626–K627] TH050, [K531] TH214, no locations)

L. 12.5mm; W. 12mm; H. 23mm; Wt 5.19g; X-ray: L43, L47, L102



82 Photo Lucy Martin, Cotswold Archaeology.

82 [K543]

SWORD-RING IN CAST SILVER OF FIXED FORM. Decorated both sides with an incised bird head (ungilded). Underside has a single cast-in rivet stub (L. 2mm; Diam. 3mm). *Wear/marks*: light wear. *Set*: possibly a fit with pommel **68**, or hilt-plate pair **372–373**.

(Grid location: [K543] TH030, no location)

L. 30mm; W. 21mm; H. 17mm; Wt 22.26g; X-ray: L28



Staffordshire Hoard Catalogue

The catalogue was produced by the project

Contextualising Metal-Detected Discoveries: Staffordshire Anglo-Saxon Hoard

Historic England Project 5892

The Staffordshire Hoard is owned by the Birmingham City Council and the Stoke-on-Trent City Council and cared for on their behalf by Birmingham Museums Trust and The Potteries Museum & Art Gallery.

The Staffordshire Hoard research project was conducted by Barbican Research Associates Ltd and funded by Historic England and the owners.



City of
Stoke-on-Trent

