

---

## 7 CATALOGUE

---

All finds are in the National Museum of Antiquities of Scotland, Edinburgh, except those noted as in Tankerness House Museum, Kirkwall, Orkney (THM) or Birsay Site Museum (BSM). The finds in the National Museum are registered with the numbers in this catalogue prefixed by the letters HB.

Finds from the Hunter and Morris excavations are listed with their full site reference and phasing eg phase 1b (H and M.BB74: QX452). The appropriate Curle phasing is also given as it is generally in these groupings that the objects are discussed in the text.

Finds from Areas X and Y have been classified as belonging to the lower Norse horizon.

---

### BONE

---

#### SMALL PINS (HIPPED-TYPE)

- 1 Bone pin, carved segmented head with collar and swelling shank. 60 mm long.  
Area II. Unstratified. THM. Ill 7.
- 2 Bone pin, carved segmented head, with disc and collar, hipped shank. 38 mm long.  
Area II. Lower Norse horizon, Room VIII. Ill 7.
- 3 Bone pin, rudimentary animal head set at right angles to shank. 57 mm long.  
Area II. Pictish horizon, Zone 3. Ill 7.
- 4 Bone pin, finely carved animal head set at right angles to hipped shank. 53 mm long.  
Area II. Middle Norse horizon, Room 2. Ill 7.
- 5 Bone pin, animal head with collar, set at right angles to shank. 39 mm long.  
Area II. Pictish horizon, Zone 1. THM. Ill 7.
- 6 Bone pin, poor condition, animal head set at right angles to shank. 48 mm long.  
Area III. House Site C. Not illustrated.
- 7 Bone pin, flat thistle-shaped head. 34 mm long (tip broken).  
Area II. Pictish horizon, Zone 5 Phase 1b. (H and M.BB74: QX452). Ill 7.
- 8 Bone pin, circular head with disc and collar, hipped shank. 43 mm long.  
Area II. Unstratified. Ill 7.
- 9 Bone pin, flat head with vertical sides and collar, dark colour. 42 mm long.  
Area II. Pictish horizon, Zone 4. Ill 7.
- 10 Bone pin, faceted head over collar, swelling shank. 42 mm long.  
Area II. Pictish horizon, Zone 1. Ill 7.
- 11 Bone pin, roughly faceted head, hipped shank. 37 mm long.  
Area II. Pictish horizon, Zone 1. Not illustrated.
- 12 Bone pin, mace-headed, 2 rows of projections round sides and 1 on top, hipped shank. 51 mm long.  
Area II. Pictish horizon, Zone 4 Phase a. Ill 7.
- 13 Bone pin, flattened ball head decorated with incised oblique opposing lines, two incised bands of hatching on shank. 60 mm long.  
Area II. Pictish horizon, Zone 1. Ill 7.
- 14 Bone pin, ball head decorated with incised cross, lozenge pattern on circumference, hipped shank. 39 mm long.  
Area II. Unstratified. Ill 7.
- 15 Bone pin, circular head with disc and collar, decorated overall with dots, hipped shank. 28 mm long.  
Area II. Pictish horizon, Zone 3. THM. Ill 7.
- 16 Bone pin, ball head with collar decorated with cross and dots, swelling shank. 42 mm long.  
Area II. Pictish horizon, Zone 4 Phase a. Ill 7.
- 17 Bone pin, disc headed, single dot on either side, 3 dots round edge of disc. 32 mm long.  
Area III. House Site D. Ill 7.
- 18 Bone pin, triangular ovoid head, with dot in each sector and on top. 31 mm long.  
Area II. Pictish horizon, Zone 4 Phase a. Ill 7.
- 19 Bone pin, square head with flat top and collar. Decorated with dots, tapering shank. 52 mm long.  
Area II. Pictish horizon, Zone 1. Ill 7.
- 20 Bone pin, irregular circular head with flat top decorated overall with dots, swelling shank. 55 mm long.  
Area II. Lower Norse horizon, Passage 2. THM. Ill 7.
- 21 Bone pin, circular head with 5 dots on flat top, ring of dots round circumference, disc and collar. 55 mm long.  
Area II. Pictish horizon, Zone 1. Ill 7.
- 22 Bone pin, circular head with flat top decorated with dots, swelling shank with band of 2 rows of dots joined by intersecting lines. 51 mm long.  
Area II. Lower Norse horizon, Room IV. Ill 7.
- 23 Bone pin with circular flat topped head, decorated with dots and outlined by incised lines. 45 mm long (tip broken).  
Area II. Lower Norse horizon, Room IV. Not illustrated.
- 24 Bone pin, flat, expanded head, tapering shank. 45 mm long.  
Area II. Pictish horizon, Zone 5 Phase 1b. (H and M.BB74: QX453). Ill 7.
- 25 Bone pin, flat, angular head and swelling shank. 55 mm long (tip broken).  
Area II. Lower Norse horizon, Room VII. Not illustrated.

- 26 Bone pin with flat, angular head and tapering shank. 44 mm long.  
Area II. Lower Norse horizon, Room VII. Ill 7.
- 27 Bone pin, flat spade shaped head (part broken off), tapering shank. 60 mm long.  
Area II. Pictish horizon, Zone 1. Ill 7.
- 28 Bone pin, flat, elongated head partly split and tapering shank with constricted neck. 66 mm long (tip broken).  
Area II. Lower Norse horizon, Room VII. Not illustrated.
- 29 Bone pin, elongated head, and tapering shank. 64 mm long.  
Area II. Lower Norse horizon, Room VII. Not illustrated.
- 30 Bone pin, large mushroom shaped head and thick hipped shank. 53 mm long.  
Area II. Pictish horizon, Zone 4. Ill 7.
- 31 Bone pin, acorn shaped head and hipped shank. 45 mm long.  
Area II. Pictish horizon, Zone 5 Phase 2b. (H and M.BB73: AM10). Ill 7.
- 32 Bone pin, button shaped head and hipped shank. 45 mm long.  
Area II. Lower Norse horizon, Passage 1. THM. Ill 7.
- 33 Bone pin, button shaped head and hipped shank. 48 mm long.  
Area II. Lower Norse horizon, Passage 1. Not illustrated.
- 34 Bone pin, button shaped head and hipped shank. 45 mm long.  
Area II. Pictish horizon, Zone 3. THM. Not illustrated.
- 35 Bone pin, button shaped head and hipped shank. 41 mm long.  
Area II. Pictish horizon, Zone V Phase 2b. (H and M.BB74: QO440). Not illustrated.
- 36 Bone pin, button shaped head and hipped shank. 40 mm long.  
Area II. Pictish horizon. Not illustrated.
- 37 Bone pin with button shaped head and hipped shank. 39 mm long.  
Area II. Pictish horizon. Zone 2. Not illustrated.
- 38 Bone pin, button shaped head and hipped shank. 39 mm long.  
Area II. Lower Norse horizon, Room VII. Not illustrated.
- 39 Bone pin with button shaped head and hipped shank. 39 mm long (tip broken).  
Area II. Lower Norse horizon, Room I. Not illustrated.
- 40 Bone pin with button shaped head and hipped shank. 39 mm long.  
Area II. Pictish horizon, Zone 4 Phase b. Not illustrated.
- 41 Bone pin with button shaped head and hipped shank. 35 mm long.  
Area II. Pictish horizon, Zone 4 Phase b. Not illustrated.
- 42 Bone pin with large ball head, constricted neck, and swelling shank. 41 mm long.  
Area II. Middle Norse horizon, Midden b. THM. Ill 7.
- 43 Bone pin with ball head and hipped shank. 58 mm long.  
Area II. Pictish horizon, Zone 4 Phase a. Not illustrated.
- 44 Bone pin with ball head and hipped shank. 56 mm long.  
Area II. Pictish horizon, Zone 4 Phase a. Not illustrated.
- 45 Bone pin with small ball head, highly polished. 48 mm long.  
Area II. Pictish horizon, Zone 2. Not illustrated.
- 46 Bone pin with ball head and hipped shank. 38 mm long.  
Area II. Pictish horizon, Zone 4 Phase a. Not illustrated.
- 47 Bone pin with ball head and hipped shank. 35 mm long.  
Area II. Pictish horizon, Zone 5 Phase 1a. (H and M.BB74: QZ459). Not illustrated.
- 48 Bone pin with faceted head, worn, and hipped shank. 36 mm long.  
Area II. Pictish horizon, Zone 5 Phase 2b. (H and M.BB74: QO437). Not illustrated.
- 49 Bone pin with very small ball head and swelling shank. 53 mm long.  
Area II. Lower Norse horizon, Room VII. Not illustrated.
- 50 Bone pin with very small ball head and swelling shank. 30 mm long (tip broken).  
Area II. Pictish horizon, Zone 4 Phase a. Not illustrated.
- 51 Bone pin with globular head and swelling shank. 55 mm long.  
Area II. Lower Norse horizon, Room VIII. Not illustrated.
- 52 Bone pin with round head with collar, hipped shank. 33 mm long (tip broken).  
Area II. Lower Norse horizon, Room VIII. THM. Ill 7.
- 53 Bone pin with round head and collar, hipped shank. 44 mm long (tip broken).  
Area II. Pictish horizon, Zone 1. Not illustrated.
- 54 Bone pin with round head surmounted with flat disc, swelling shank. 45 mm long.  
Area II. Pictish horizon, Zone 4 Phase b. Ill 7.
- 55 Bone pin with round head surmounted by disc, hipped shank. 35 mm long.  
Area II. Pictish horizon, Zone 2. Not illustrated.
- 56 Bone pin with ball head surmounted by disc, hipped shank. 45 mm long.  
Area II. Pictish horizon, Zone 4, Phase b. Not illustrated.
- 57 Bone pin with truncated large flat topped head, hipped shank. 42 mm long (tip broken).  
Area II. Pictish horizon, Zone 1. THM. Ill 7.
- 58 Bone pin with half-ball flat topped head and hipped shank. 45 mm long.  
Unstratified. Not illustrated.
- 59 Bone pin with half-ball head and hipped shank. 67 mm long.  
Area II. Lower Norse horizon, Passage 1. Not illustrated.
- 60 Bone pin with half-ball head and swelling shank. 66 mm long.  
Area II. Pictish horizon. Ill 7.
- 61 Bone pin with half-ball head and hipped shank. 54 mm long.  
Area II. Pictish horizon, Zone 4 Phase b. Not illustrated.
- 62 Bone pin with half-ball head and hipped shank. 45 mm long.  
Area II. Unstratified. THM. Not illustrated.
- 63 Bone pin with half-ball head and hipped shank. 43 mm long.  
Area II. Pictish horizon, Zone 4 Phase b. Not illustrated.
- 64 Bone pin with half-ball head and curved shank. 44 mm long.

- Area II. Pictish horizon, Zone 4 Phase b. Not illustrated.
- 65 Bone pin with small half-ball head, hipped shank. 40 mm long.  
Area III. House Site E. Not illustrated.
- 66 Bone pin with half-ball head and swelling shank. 40 mm long.  
Area II. Pictish horizon, Zone 1. Not illustrated.
- 67 Bone pin with half-ball head and hipped shank. 39 mm long.  
Area III. House Site E. Not illustrated.
- 68 Bone pin with half-ball head and hipped shank. 37 mm long.  
Area II. Pictish horizon, Zone 4 Phase a. Not illustrated.
- 69 Bone pin with half-ball head and collar, hipped shank. 47 mm long.  
Area II. Lower Norse horizon, Room VII. Not illustrated.
- 70 Bone pin with half-ball head and collar, hipped shank. 40 mm long.  
Area II. Pictish horizon, Zone 4 Phase a. Not illustrated.
- 71 Bone pin with straight-sided head encircled by incised line. 37 mm long.  
Area II. Pictish horizon, Zone 4 Phase b. Not illustrated.
- 72 Bone pin with ovoid head. 35 mm long.  
Area III. House Site C. Not illustrated.
- 73 Bone pin, flattened half-ball head. 37 mm long.  
Area II. Pictish horizon, Zone 4 Phase b. THM. Not illustrated.
- 74 Bone pin, flattened half-ball head. 52 mm long.  
Area II. Pictish horizon, Zone 4 Phase a. THM. Not illustrated.
- 75 Bone pin, flattened half-ball head. 60 mm long (tip broken).  
Area II. Pictish horizon, Zone 4 Phase b. Not illustrated.
- 76 Bone pin, flattened straight-topped head (rough condition). 66 mm long.  
Area II. Pictish horizon, Zone 5, layers to the E. (H and M.BB74: PT250). Not illustrated.
- 77 Bone pin, (shank only) narrow incised band with oblique strokes. 26 mm long.  
Area II. Unstratified. Not illustrated.
- 84 Bone pin, globular head roughly carved, oval section. 114 mm long (shank repaired).  
Area II. Lower Norse horizon, Room VIII. Ill 48.
- 85 Bone pin, double button head, oval section. 95 mm long.  
Area II. Lower Norse horizon, Passage 1. Ill 48.
- 86 Bone pin, flat straight topped head with constricted waist. 72 mm long (shank incomplete).  
Area II. Unstratified. B S M. Ill 48.
- 87 Bone pin, flat winged head. 62 mm long (shank incomplete).  
Area II. Pictish horizon, Zone 4 Phase b. Ill 48.
- 88 Bone pin, head carved with triangular segments, a dot in centre of each. 68 mm long (shank incomplete), poor condition.  
Area II. Lower Norse horizon, Room I. Ill 48.
- 89 Bone pin, from pig's fibula, flat roughly squared head. 110 mm long.  
Area II. Upper Norse horizon, Room 13. Ill 48.
- 90 Bone pin, from pig's fibula, straight topped flat head. 87 mm long (shank incomplete).  
Area II. Lower Norse horizon, Passage 1. Not illustrated.
- 91 Bone skewer pin, expanded flat straight topped head rolled over at top. 92 mm long.  
Area II. Middle Norse horizon, Room 6. Ill 48.
- 92 Antler pin with straight topped flat expanded head. 93 mm long (tip broken).  
Area II. Lower Norse horizon, Passage 1. Ill 48.
- 93 Bone pin with straight topped flat expanded head and swelling shank. 90 mm long.  
Area II. Middle Norse horizon, Room 10. Ill 48.
- 94 Bone pin, from pig's fibula, with straight topped expanded head. 83 mm long.  
Area II. Unstratified. Not illustrated.
- 95 Bone pin, from pig's fibula, with straight topped expanded head. 87 mm long.  
Area II. Lower Norse horizon, Room IV. Not illustrated.
- 96 Bone skewer pin, from pig's fibula. 80 mm long.  
Area II. Room 5, unstratified (H and M.BB74: PA200) THM. Ill 48.
- 97 Bone skewer pin, from pig's fibula. 88 mm long.  
Area II. Lower Norse horizon, Room III. Not illustrated.
- 98 Bone skewer pin, from pig's fibula. 98 mm long.  
Area II. Lower Norse horizon, Room I. Not illustrated.
- 99 Bone skewer pin, from pig's fibula. 112 mm long.  
Area II. Middle Norse horizon, Room 7. Ill 48.
- 100 Bone skewer pin, possibly whalebone, split and roughly formed. 78 mm long.  
Area II. Lower Norse horizon, Room V, Phase 4a. (H and M.BB74: QA308). Not illustrated.

## LARGER PINS AND SKEWERS

- 78 Bone pin, flattened head. 35 mm long (shank broken).  
Area II. Unstratified. Not illustrated.
- 79 Bone pin, small circular flat-topped head with dot in centre. 95 mm long.  
Area II. Lower Norse horizon, Passage 1. Not illustrated.
- 80 Bone pin, flattened head. 99 mm long.  
Area II. Lower Norse horizon, Passage 1. Not illustrated.
- 81 Bone pin, from pig's fibula, flattened head. 82 mm long.  
Area II. Unstratified. Not illustrated.
- 82 Bone pin, globular head, rough condition. 100 mm long.  
Area II. Lower Norse horizon, Passage 1. Not illustrated.
- 83 Bone pin, globular head. 55 mm long (shank incomplete).  
Area II. Middle Norse horizon, Midden a. Not illustrated.

## LARGE PINS WITH PERFORATED HEADS

- 101 Bone pin, flat winged head, large perforation. 123 mm long.  
Area II. Upper Norse horizon, Room 14. Ill 48.
- 102 Pin from long bone, flat straight head outlined by single incised line with hatching. 106 mm long.  
Area II. Middle Norse horizon, Room 8. THM. Ill 48.
- 103 Pin, long bone, flat straight head outlined by incised lines with hatching. 80 mm long (shank incomplete).  
Area II. Middle Norse horizon, Room 6. Ill 48.
- 104 Pin, long bone, flat expanded head, hipped shank. 105 mm long.  
Area II. Middle Norse horizon, Room 8. Ill 48.

- 105 Pin, long bone, flat rectangular head with pedimented top. 108 mm long.  
Area II. Middle Norse horizon, Room 4. Ill 48.
- 106 Pin, long bone, flat spade shaped head. 90 mm long.  
Area II. Middle Norse horizon, Room 7. Ill 48.
- 107 Pin, antler, flat irregularly shaped head, perforated, rough condition. 128 mm long.  
Area II. Lower Norse horizon, Room V, Phase 4b. (H and M.BB74: PO202). Ill 48.
- 108 Pin, long bone, flat expanded head, perforated. 49 mm long (shank incomplete).  
Area II. Unstratified. THM. Ill 48.
- 109 Pin, antler, angular head. 60 mm long (shank incomplete).  
Area II. Lower Norse horizon, Passage 2. Ill 48.
- 110 Pin, long bone, roughly rounded head. 97 mm long.  
Area II. Middle Norse horizon, Midden a. Ill 48.
- 111 Pin, long bone from large animal, very thick shank. 105 mm long.  
Area II. Middle Norse horizon, Room 2. Ill 48.
- 112 Pin, long bone from large animal, flat straight head. 160 mm long (shank broken).  
Area II. Middle Norse horizon, Room 4. Ill 48.
- 113 Pin, bone or antler, annular head. 35 mm long (shank broken).  
Area II. Middle Norse horizon, Room 2. Ill 48.
- 114 Pin, long bone or pig's fibula, flat straight head. 35 mm long (shank broken).  
Area II. Middle Norse horizon, Midden a. THM. Ill 48.
- 115 Pin, long bone or pig's fibula, annular head. 35 mm long (shank broken).  
Area II. Middle Norse horizon. Midden a. Ill 48.
- 116 Pin, antler, flat straight head. 50 mm long (shank broken).  
Area II. Middle Norse horizon, Midden a. Ill 48.
- 117 Pin, antler, annular head. 28 mm long (shank incomplete).  
Area II. Middle Norse horizon, Midden a. Ill 48.
- 118 Pin, long bone, roughly pedimented head. 44 mm long (shank incomplete).  
Area II. Middle Norse horizon, Midden a. Ill 48.
- 119 Pin, long bone, flat irregular head. 60 mm long (shank incomplete).  
Area II. Middle Norse horizon, Room 11. THM. Ill 48.
- 120 Pin, long bone, flat annular head. 74 mm long (tip broken).  
Area II. Middle Norse horizon, Midden b. Ill 48.
- 121 Pin, long bone, straight head set at an angle. 74 mm long.  
Area II. Lower Norse horizon, Room V, Phase 4b. (H and M.BB74: PR209). THM. Ill 48.
- 122 Pin, long bone, flat straight head (incomplete). 98 mm long (shank incomplete).  
Area II. Lower Norse horizon, Room IV. THM. Ill 48.
- 123 Bone pin, carved head with large perforation. 87 mm long (shank incomplete).  
Area II. Middle Norse horizon, Midden a. THM. Not illustrated.
- 124 Bone pin, broken at perforation. 77 mm long.  
Area II. Middle Norse horizon, Midden c. Not illustrated.
- 125 Bone pin, flat straight topped head. 63 mm long (shank incomplete).  
Area II. Middle Norse horizon, Room 1. Not illustrated.
- 126 Bone pin, flat expanded straight topped head. 34 mm long (shank incomplete).  
Area II. Lower Norse horizon, Room 1. Not illustrated.
- 127 Bone pin, annular head, fractured at perforation, spatulate shank (incomplete). 77 mm long.  
Area II. Pictish horizon, Zone 5 Phase 2b (H and M.BB74: QO434). Not illustrated.
- 128 Bone pin, fractured at perforation. 44 mm long (shank split and incomplete).  
Area II. Lower Norse horizon, Room V, Phase 4b (H and M.BB74: PR219). Not illustrated.
- 129 Bone pin, flat head, coarse thick shank. 97 mm long (tip broken).  
Unstratified. Not illustrated.

## NAIL-HEADED PINS

- 130 Pin, long bone, nail-headed. 117 mm long (shank mended, tip broken).  
Area II. Middle Norse horizon, Midden a. Ill 48.
- 131 Pin, antler, nail-headed. 40 mm long (shank broken).  
Area II. Middle Norse horizon, Room 11. Ill 48.
- 132 Pin, long bone, nail-headed. 58 mm long.  
Area II. Middle Norse horizon, Midden a. Ill 48.
- 133 Pin, antler, nail-headed. 40 mm long (shank broken).  
Area II. Middle Norse horizon, Midden a. Ill 48.
- 134 Pin, long bone, nail-headed. 42 mm long (shank broken).  
Area II. Middle Norse horizon, Midden a. Ill 48.
- 135 Pin, antler, nail-headed. 79 mm long.  
Area II. Middle Norse horizon, Room 11. THM. Ill 48.
- 136 Pin, antler, nail-headed. 115 mm long (shank repaired, tip missing).  
Area II. Middle Norse horizon, Midden a. Not illustrated.
- 137 Pin, long bone, nail-headed. 30 mm long (shank broken).  
Area II. Middle Norse horizon, Room 1. Not illustrated.

## NEEDLES

- 138 Bone needle from long bone.  
35 mm long (shank incomplete). Area II. Lower Norse horizon, Room 11. Ill 8.
- 139 Bone needle, shank encircled by spiral incised line. 42 mm long.  
Area II. Pictish horizon, Zone 2. Ill 8.
- 140 Bone needle, eye set low, tapering shank. 45 mm long.  
Area III. House Site C. THM. Ill 8.
- 141 Bone needle, tapering shank. 45 mm long.  
Area II. Pictish horizon, Zone 2. THM. Ill 8.
- 142 Bone needle, tapering shank, imperfectly cut. 55 mm long.  
Area II. Pictish horizon, Zone 1. Ill 8.
- 143 Bone needle, slightly curved shank. 62 mm long.  
Area II. Lower Norse horizon, Area Y. Ill 8.
- 144 Bone needle, rectangular top decorated with dots, tapering shank. 62 mm long.  
Area II. Lower Norse horizon, Passage 1. Ill 8.
- 145 Bone needle, tapering shank. 52 mm long.  
Unstratified. THM. Ill 8.
- 146 Bone needle, tapering shank. 47 mm long.  
Unstratified. Ill 8.
- 147 Bone needle, roughly shaped. 45 mm long (shank incomplete).  
Area II. Lower Norse horizon, Passage 1. THM. Not illustrated.

- 148 Bone needle, wide, flat, eye set low. 45 mm long.  
Area II. Unstratified. Not illustrated.
- 149 Bone needle, fractured at eye, slender shank. 55 mm long.  
Area II. Pictish horizon, Zone 2. Not illustrated.
- 150 Bone needle, not completed, eye not pierced through, slightly curved shank. 44 mm long.  
Unstratified. Not illustrated.
- 151 Bone needle from pig's fibula, curved top. 95 mm long.  
Area II. Lower Norse horizon, Room I. Ill 34.
- 152 Bone needle, head slanting, perforation not fully bored through. 73 mm long.  
Area II. Lower Norse horizon, Passage 2. Ill 34.
- 153 Bone needle, pointed head. 70 mm long (shank incomplete).  
Area II. Lower Norse horizon, Area Y. Ill 34.
- 154 Bone needle, flat slanting head. 73 mm long (shank incomplete).  
Area II. Lower Norse horizon, Room VII. Ill 34.
- 155 Bone needle, flat head. 46 mm long (shank incomplete).  
Area II. Lower Norse horizon, Passage 2. Ill 34.
- 156 Bone needle, straight head. 28 mm long (shank incomplete).  
Area II. Lower Norse horizon, Room V, Phase 4b. (H and M.BB74: PO205). Ill 34.
- 157 Bone needle, from rib bone, elongated head and eye, curved shank.  
88 mm long. Area II. Lower Norse horizon, Passage 1. Ill 34.
- 158 Bone needle, sharply pointed elongated head, elongated eye. 88 mm long.  
Area II. Lower Norse horizon, Room VIII. Ill 34.
- 159 Antler needle, wide flat section, elongated eye. 45 mm long (shank incomplete).  
Area II. Lower Norse horizon, Room I. Ill 34.
- 160 Bone needle, polished, triangular in shape, with notch at top, wide oval eye, with small perforation below. 53 mm long.  
Area I. Surface find. Ill 34.
- 161 Bone netting needle, flat head, broken at eye, tapering shank. 98 mm long (tip broken).  
Area II. Middle Norse horizon, Room 8. Ill 34.
- 162 Bone netting needle, flat slightly curved head, curved shank.  
Area II. Middle Norse horizon, Room 10. THM. Ill 34.
- 163 Bone netting needle, flat straight head, curved shank. 105 mm long.  
Area II. Upper Norse horizon, Room 14. Ill 34.
- 164 Group of eighteen shanks for large pins or needles, all with points.
- 169 Pick, rib fragment. 41 mm long.  
Area II. Lower Norse horizon, Room VIII. THM. Ill 35.
- 170 Pick, fragment long bone. 49 mm long.  
Area II. Lower Norse horizon, Room VIII. Ill 35.
- 171 Pick, rib fragment. 62 mm long.  
Area II. Lower Norse horizon, Room VIII. Ill 35.
- 172 Pick, rib fragment. 64 mm long.  
Area II. Pictish horizon, Zone 4 Phase a. Ill 35.
- 173 Pick, rib fragment. 60 mm long.  
Area II. Lower Norse horizon, Room VI. Ill 35.
- 174 Pick, rib fragment. 64 mm long.  
Area II. Middle Norse horizon, Room I. Ill 35.
- 175 Pick, rib fragment. 65 mm long.  
Area II. Lower Norse horizon, Room VII. Ill 35.
- 176 Pick, rib bone from ungulate. 86 mm long.  
Area II. Lower Norse horizon, Room VIII. Ill 35.
- 177 Pick, pointed both ends. 45 mm long.  
Unstratified. THM. Not illustrated.
- 178 Pick, from pig's incisor tooth (root is point). 45 mm long.  
Area II. Lower Norse horizon, Room VII. THM. Ill 35.
- 179 Pick, from pig's incisor tooth (root is point), 38 mm long.  
Area II. Lower Norse horizon, Room VIII. Ill 35.
- 180 Pick, from sheep or goat metatarsus. 56 mm long.  
Area II. Lower Norse horizon, Room VII. Ill 35.
- 181 Bone implement, pointed both ends, polished, from long bone. 83 mm long.  
Area II. Upper Norse horizon, Room 14. Ill 35.
- 182 Bone implement, pointed both ends, from long bone. 83 mm long.  
Area II. Upper Norse horizon. THM. Not illustrated.
- 183 Bone implement, pointed both ends, from long bone. 90 mm long.  
Area II. Lower Norse horizon, Room V, Phase 3b (H and M.BB74: QB358). Not illustrated.
- 184 Bone implement, round with straight top, pointed end; antler or long bone. 79 mm long.  
Area II. Unstratified. Ill 35.
- 185 Bone implement, similar to 184, round with straight top with dot in centre, pointed end, antler or long bone. 80 mm long.  
Area II. Lower Norse horizon, Room V, Phase 4a. (H and M.BB73: AG8). THM. Not illustrated.
- 186 Bone implement, round, pointed end. 88 mm long (tip broken).  
Unstratified. Not illustrated.
- 187 Bone implement, pointed top broken, antler or long bone. 73 mm long.  
Area II. Lower Norse horizon, Passage 2. Not illustrated.
- 188 Round pointed implement, flat, slightly expanded top. 70 mm long.  
Unstratified. Not illustrated.
- 189 Wide flat pointed implement, antler or long bone. 81 mm long (top and point broken).  
Area II. Pictish horizon, Zone 4, Phase a. Ill 35.
- 190a Wide flat pointed implement, antler or long bone. 60 mm long (top and tip broken).  
Area II. Unstratified. THM. Not illustrated.
- 190b Flat pointed implement, widening at top. 56 mm long (top broken).  
Unstratified. Not illustrated.
- 191 Leaf shaped implement. 42 mm long.  
Unstratified. Not illustrated.
- 192a Unfinished rod, long bone, possibly rough-out for large pin. 110 mm long.

## PICKS AND POINTED BONE IMPLEMENTS

- 165 Bone implement, sharply pointed, flat section, from rib bone of large ungulate. 105 mm long.  
Area II. Lower Norse horizon, Passage 2. Ill 35.
- 166 Bone implement, sharply pointed, flat section, from rib bone of large ungulate. 97 mm long.  
Area II. Lower Norse horizon, Room VIII. THM. Ill 35.
- 167 Pick, rib fragment. 39 mm long.  
Area II. Lower Norse horizon, Room IV. THM. Ill 35.
- 168 Pick, rib fragment. 39 mm long.  
Area II. Lower Norse horizon, Room VIII. THM. Ill 35.

- Area II. Lower Norse horizon, Room V, Phase 4a. (H and M.BB74: PZ260). Not illustrated.
- 192b Cut bone, possibly rough-out for pin, 75 mm long. Area II. Pictish horizon, Zone 5, Phase 2b. (H and M.BB74: QO438). Not illustrated.

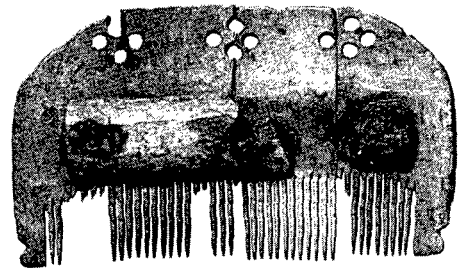
#### ANTLER HAIR COMBS: DOUBLE-SIDED

- 193 Pair connecting plates, convex section, incised with chevron pattern, 6 iron rivets, teeth broken off. 115 mm long.  
Area II. Lower Norse horizon, Room V, Phase 4a. (H and M.BB73: AC6). Ill 10.
- 194 Fragment of connecting plate, decoration oblique incised lines. 22 mm long.  
Area II. Lower Norse horizon, Room V, phase 4a. (H and M.BB74: PW273). Ill 10.
- 195 Fragment of connecting plate, decoration alternate vertical and crossed incised lines and extended tooth cuts. 52 mm long.  
Area II. Unstratified. Ill 10.
- 196 Comb with one end tooth segment missing. Connecting plates with raised panels. Decoration dot-in-double-circle, 5 iron rivets, teeth graduated. 96 mm long.  
Area II. Pictish horizon, Zone 1. THM. Ill 10.
- 197 Comb with convex connecting plates, bevelled ends, 6 iron rivets, ? teeth graduated, decoration dot-in-double-circle, suspension hole at each end. 112 mm long.  
Area II. Pictish horizon, Zone 1. Ill 10.
- 198 Comb (incomplete) one end tooth segment, fragments of connecting plates, flat section, 2 iron rivets, decoration dot-in-circle, teeth graduated, 1 suspension hole. 48 mm long.  
Area II. Pictish horizon, Zone 1. Ill 10.
- 199 Fragments of connecting plates, decoration dot-in-circle, 2 iron rivets, 3 tooth segments. 70 mm long.  
Area II. Pictish horizon, Zone 1. Not illustrated.
- 200 Almost complete comb, connecting plates, flat section, with a line of dots-in-ring between grooved horizontal lines, 5 iron rivets, end tooth segments with dot-in-circle, teeth slightly graduated. 153 mm long.  
Area II. Lower Norse horizon, Room VI. Ill 10.
- 201 End tooth segment only, teeth slightly graduated, coarse, 1 iron rivet, hole for suspension. 18 mm long.  
Area II. Lower Norse horizon, Room IV. Ill 10.
- 202 Comb, incomplete but broken end smoothed for re-use. Connecting plates flat section, plain, 5 iron rivets, teeth slightly graduated. 96 mm long.  
Area II. Lower Norse horizon, Room I. Ill 10.
- 203 Almost complete comb, connecting plates convex, plain, 7 iron rivets, teeth slightly graduated. 150 mm long.  
Area II. Lower Norse horizon, Passage 1. THM. Ill 10.
- 204 Pair connecting plates only, flat section, decoration single row of dot-in-double-circle, 3 iron rivets. 60 mm long.  
Area II. Pictish horizon, Zone 1. Ill 10.
- 205 Pair connecting plates, incomplete, flat section, decorated 3 rows dot-in-circle, 2 iron rivets, 1 tooth segment. 60 mm long.  
Area II. Lower Norse horizon, Room I. Ill 10.
- 206 One end tooth segment, decorated with vertical row of dot-in-circle, and one middle tooth segment. 30 mm long.  
Area II. Lower Norse horizon, Passage 1. Ill 10.

- 207 One end tooth segment, suspension hole and decorated with dot-in-circle. 24 mm long.  
Area II. Lower Norse horizon, Passage 1. Ill 10.
- 208 One end tooth segment decorated with dot-in-circle and faintly incised vertical lines, and one connecting plate (incomplete) with dot-in-circle, 1 iron rivet. 36 mm long.  
Area II. Lower Norse horizon, Passage 1. THM. Ill 10.
- 209 Single connecting plate, convex section (incomplete), decoration dot-in-circle, extended tooth cuts, 2 iron rivets, 1 tooth segment. 53 mm long.  
Area II. Lower Norse horizon, Passage 1. Ill 10.
- 210 Single connecting plate (incomplete), dot-in-circle decoration, 1 iron rivet, 1 tooth segment (incomplete). 35 mm long.  
Area II. Lower Norse horizon, Passage 1. Not illustrated.
- 211 Single undecorated end tooth segment, ogival, and 3 tooth segments, 1 iron rivet. Teeth fine. 55 mm long.  
Area II. Pictish horizon, Zone 4. Not illustrated.
- 212 Group of one end tooth segment, and 3 central tooth segments, 2 fragments connecting plates. Approx 60 mm long.  
Area II. Lower Norse horizon, Passage 1. Not illustrated.
- 213 Small fragment connecting plate, decorated with fine vertical lines. 32 mm x 11 mm.  
Area II. Lower Norse horizon, Room I. Not illustrated.

#### SINGLE-SIDED COMBS: HIGH BACKED

- 214 Round-backed comb, one end broken and smoothed for re-use, two decorative perforations, plain connecting plates, 3 iron rivets. 62 mm long.  
Area II. Pictish horizon, Zone 4 Phase b. Ill 9.
- 215 Round-backed comb, three decorative groups of 4 punched holes set at junction of segments, plain bevelled connecting plates (incomplete), 3 iron rivets. 76 mm long.



215

Half of comb from Area III, House Site C; other half from Area II, Pictish horizon, Zone 1. THM. Ill 9.

- 216 Fragment of connecting plate with decoration of incised oblique opposing lines and dot-in-circle showing tooth marks. 26 mm long.  
Area II. Lower Norse horizon, Room V, Phase 3b. (H and M.BB74: QB363). Ill 9.
- 217 Comb (incomplete) with curved top, the edge ornamented with short oblique lines and one group of 4 punched holes, connecting plates (incomplete) bevelled, decorated with incised oblique opposing lines. 80 mm long.  
Area II. Lower Norse horizon, Room VIII. Ill 9.

- 218 Comb (incomplete) with curved back ending in outline of bird's head, decorated with dot-in-circle, connecting plates with crossed double lines ending in dot-in-circle, 4 iron rivets. 87 mm long.  
Area II. Lower Norse horizon, Passage 2. Ill 9.
- 219 End tooth segment of high-backed comb only, flat top ornamented with 2 dot-in-circle, short oblique cut on inward side. 19 mm wide.  
Area II. Pictish horizon, Zone 4. Phase b. Ill 9.
- 220 End tooth segment only of high-backed comb, top forms wavy line, single perforation, short oblique cut in inward side. 17 mm wide.  
Area II. Lower Norse horizon, Room V, Phase 4a (H and M.BB74: PZ378). Ill 9.
- 221 Comb (incomplete), remaining end segment forms curved openwork outline decorated with groups of dot-in-circle. 83 mm long.  
Area II. Lower Norse horizon, Area X. Ill 9.
- 222 Fragment of thin curved bone plate, decorated with random dot-in-circle, perforations. Possibly trial piece for comb. 28 mm × 15 mm.  
Area II. Lower Norse horizon, Room VII. Not illustrated.
- 223 Fragment of shaped antler bone plate, decorated with dot-in-circle. Possibly end segment of high-backed comb. 22 mm × 16 mm.  
Area II. Lower Norse horizon, Room I. Not illustrated.

#### SINGLE-SIDED COMBS: NORSE TYPES

- 224 Comb, with straight base and curved back, ends missing, outlined by double grooved line, and with recumbent S-form in centre, 5 iron rivets, tooth segments incomplete. 168 mm long.  
Area II. Lower Norse horizon, Room IV. THM. Ill 36.
- 225 Comb (incomplete), connecting plates with straight base and curved back, outlined by incised line, ornamented by interwoven incised lines, 2 iron rivets. 70 mm long.  
Area II. Lower Norse horizon, Room VII. Ill 36.
- 226 Fragments of connecting plates, hemispherical section and with band of cording at one end, tooth segment (teeth missing). 44 mm long.  
Area II. Lower Norse horizon, Room I. Ill 36.
- 227 Connecting plate (incomplete), straight base and curved top, end decorated with band of cording, single iron rivet. 76 mm long.  
Unstratified. Ill 36.
- 228 End tooth segment with graduated teeth, 1 iron rivet. 18 mm long.  
Area II. Middle Norse horizon, Room 2. Ill 49.
- 229 Fragment of connecting plate, band of cording at end and band of hatching. 30 mm long.  
Area II. House Site C. Ill 49.
- 230 Comb with connecting plates extending to form arched back, copper rivets, graduated teeth. 83 mm long.  
Area II. Upper Norse horizon, Room 13. Ill 49.

#### COMB CASES

- 231 Comb case (incomplete, 1 connecting plate, 1 separator missing), upper connecting plate with bands of cording at ends, panel with dot-in-circle in centre, lower connecting plate with panel of crossing incised lines, 2 suspension holes, 3 iron rivets. 120 mm long.  
Area II. Middle Norse horizon, doorway to Room 1. THM. Ill 49.

- 232 Fragments of comb case, one end separator and fragments of two connecting plates with pattern of vertical incised double lines. 38 mm long.  
Area II. Middle Norse horizon, Room 6. Ill 49.
- 233 One connecting plate and fragment of separator, single contour line and short oblique incised lines along edge. 88 mm long.  
Area II. Middle Norse horizon, Midden a. Ill 49.

#### COMBS: MISCELLANEOUS FRAGMENTS

- 234a Bar, of long bone, resembling connecting plate of comb, flat base, curved section, with pattern of vertical and crossing double lines, worn. 84 mm long. Unstratified. Ill 49.
- 234b Bone plate, possibly rough-out for comb segment, 103 mm long.  
Area II. Lower Norse horizon, Room V, Phase 4a (H and M. BB74: QA277). Not illustrated.

#### BONE: MISCELLANEOUS

- 235 Spindle whorl from femur head of ox or deer. 40 mm diameter.  
Area II. Middle Norse horizon, Room 10. THM. Ill 38.
- 236 Spindle whorl from femur head of ox or deer. 35 mm diameter.  
Area II. Middle Norse horizon, Room 10. Ill 38.
- 237 Spindle whorl (incomplete) from femur head of ox or deer. 36 mm diameter.  
Area II. Middle Norse horizon, Room 10. Ill 38.
- 238 Spindle whorl (incomplete, burnt) from femur head of ox or deer. 29 mm diameter.  
Area II. Unstratified. Not illustrated.
- 239 Femur head of ox or deer, base and top flattened and smoothed. 40 mm diameter.  
Area II. Lower Norse horizon, Passage 1. THM. Ill 38.
- 240 Hollow cylinder, pierced laterally, bird long bone, goose-size. 66 mm long.  
Area II. Lower Norse horizon, Passage 1. THM. Ill 38.
- 241 Hollow cylinder, pierced laterally, bird long bone, goose-size. 73 mm long.  
Area II. Lower Norse horizon, Passage 1. Ill 38.
- 242 Hollow cylinder, pierced laterally, bird long bone, goose-size. 63 mm long.  
Area II. Middle Norse horizon, Midden a. Not illustrated.
- 243 Weaving tablet with 4 perforations, one side damaged, probably from scapula blade from small ungulate. 30 mm square.  
Area II. Lower Norse horizon, Room I. THM. Ill 38.
- 244 Rectangular panel, one end stepped, oblong perforation, 2 dot-in-circle on each side, from shaped plate of antler cortex. 37 mm long.  
Area II. Middle Norse horizon, Room 4. Ill 38.
- 245 Rectangular plate from outer cortex with medulla IV of red deer, back flat, front convex with 2 horizontal grooves. 97 mm long.  
Area II. Lower Norse horizon, Room VII. THM. Ill 38.
- 246 Mounting with shaped terminals from antler cortex, 4 perforations: retaining 1 complete antler peg and the head of a second. 98 mm long, peg 16 mm long.  
Area II. Lower Norse horizon, Area Y. Ill 38.
- 247 Mounting of antler, worn, irregular outline, single perforation remaining. 73 mm long.  
Area II. Lower Norse horizon, Passage 1. Ill 38.

- 248 Mounting, 2 perforations, with incomplete perforations at each end, from antler cortex. 85 mm long.  
Area II. Lower Norse horizon, Passage 1. THM. Ill 38.
- 249 Mounting from antler cortex, slightly curved section, perforations at each end, broken perforations. 72 mm long.  
Area II. Lower Norse horizon, Room VII. Ill 38.
- 250 Mounting, bone, small perforation at each end, irregular outline, oval panel of interlacing. 50 mm long.  
Area II. Pictish horizon, Zone 4, Phase b. Ill 12, 38.
- 251 Handle from antler tine, turned, broken at top, pierced through centre, decorated with 4 rows dot-in-circle. 19 mm high.  
Area II. Unstratified. THM. Ill 38.
- 252 Crescent-shaped object of antler, smoothly rounded, tips broken off, front decorated dot-in-double-circle, small oval depression on back. 28 mm wide.  
Area II. Middle Norse horizon, Midden a. Ill 38.
- 253 Amulet, seal's canine, with suspension hole, engraved 'FUTHARK' in runes. 50 × 30 mm.  
Area II. Lower Norse horizon, Passage 1. Ill 37, 38.
- 254 Pig's tusk (broken at root) large perforation. 80 mm across.  
Area II. Lower Norse horizon, Passage 1. THM. Ill 38.
- 255 Handle, circular, sheep or goat metatarsus, pierced centrally, distal end hollowed. 95 mm long.  
Area II. Lower Norse horizon, Room IV. THM. Ill 38.
- 256 Handle, circular, sheep or goat metatarsus, pierced centrally, partly split. 77 mm long.  
Area II. Lower Norse horizon, Room II. Ill 38.
- 257 Fragment of sheep or goat metatarsus, pierced centrally; possibly handle. 22 mm long.  
Unstratified. Not illustrated.
- 258 Fragment of sheep or goat metatarsus, pierced centrally, also transverse perforation for iron rivet; possibly handle. 25 mm long.  
Area II. Lower Norse horizon, Zone 1. Not illustrated.
- 259 Pin with hollow globular bone head, fragment of iron shank embedded. 24 mm high.  
Area II. Lower Norse horizon, Room VII. Ill 38.
- 260 Pin with hollow globular bone head, iron shank missing. 30 mm high.  
Area II. Lower Norse horizon, Passage 1. THM. Ill 38.
- 261 Pin with hollow globular bone head, iron shank incomplete. 40 mm high overall.  
Area II. Lower Norse horizon, Room VII. THM. Ill 38.
- 262 Pin with hollow globular bone head, fragment of iron shank embedded. 24 mm high.  
Area II. Pictish horizon, Zone 4, Phase b. Ill 38.
- 263 Bead from tooth or tusk, possibly seal, large oval perforation. 18 mm long.  
Area II. Lower Norse horizon, Room VII. Ill 38.
- 264 Bead from tooth or tusk, possibly seal, large oval perforation, discoloured by fire. 19 mm long.  
Area II. Lower Norse horizon, Room VII. Ill 38.
- 265 Disc, oval, from tooth, possibly seal, pierced at centre. 18 mm long.  
Area III. House Site C. Ill 38.
- 266 Pointed object of antler, D-shaped base with nail in core. 31 mm high.  
Area II. Pictish horizon, Zone 1. THM. Ill 38.
- 267 Trial piece (incomplete) from ox scapula. 230 mm long.  
Area II. Pictish horizon, Zone 4, Phase a. Ill 11.
- 268 Trial piece (incomplete) from ox scapula, incised with 'broad arrow'. 92 mm long.  
Area II. Pictish horizon, Zone 1. Not illustrated.
- 269 Fragment of polished long bone, formless pattern of faint incised lines on one side, and part of circle engraved on edge. 38 mm × 12 mm.  
Area II. Unstratified. Not illustrated.
- 270 Fragment of thin polished bone from ox scapula, one edge cut and one large perforation, 152 mm long.  
Area II. Lower Norse horizon, Passage 1. Not illustrated.
- 271 Playing piece, formed from femur, conical with flat base with vertical perforation. 25 mm high.  
Area II. Middle Norse horizon, Midden b. Ill 38.
- 272 Ox first phalanx, 2 holes in posterior end, socketed longitudinally. 40 mm high.  
Area II. Pictish horizon, Zone 1. Ill 38.

## BONE : MISCELLANEOUS LARGE OBJECTS

- 273 Handle from tine, polished oval grip, one end curved, the other a narrowed section with two perforations for attachment. 95 mm long.  
Area I. Ill 50.
- 274 Gaming board (incomplete), whalebone, 5 rows vertical lines, 3 horizontal, with perforations at junctions irregularly spaced. 92 mm × 62 mm.  
Area I. W Apartment. Ill 50.
- 275 Playing piece of antler, polished, conical with acorn shaped terminal, socketed longitudinally. 37 mm high.  
Area I. Church. Ill 50.



## 275

- 276 Hook or bracket from crown portion of antler (probably red deer), 3 perforations, cut from either side. 80 mm long.  
Area II. Middle Norse horizon, Room 2. Ill 50.
- 277 Toggle, or handle, bone from large fish, with constricted neck (incomplete). 40 mm long.  
Area II. Middle Norse horizon, Room 2. Ill 50.
- 278 Hook (incomplete), whalebone, flat section. 80 mm long.  
Area II. Middle Norse horizon, Room 3. Ill 50.
- 279 'Line stretcher' or 'guy', whalebone, in form of figure of eight. 118 mm long.  
Area II. Middle Norse horizon, Room 8. Ill 50.
- 280 Bone, pierced at each end, metatarsus of ox (very young calf). 125 mm long.  
Area II. Middle Norse horizon, Room 3. Ill 50.
- 281 Bone, pierced at each end, metatarsus of sheep or goat, juvenile animal. 66 mm long.  
Area II. Middle Norse horizon, Room 10. Ill 50.



- 282 Bone with central perforation cut from either side, metatarsus of pig, juvenile animal. 42 mm long. Area II. Lower Norse horizon, Area Y. THM. Ill 50.
- 283 Bone tool in form of wedge, top forming ring, pierced laterally by oval shaped bar (neatly cut off) and with perforation. 120 mm long. Area II. Middle Norse horizon, Room 4. Ill 50.
- 284 Circular hollow handle, antler or large tine, broken in half longitudinally with wide bands of low relief. 62 mm long. Area II. Middle Norse horizon, Midden c, THM. Ill 50.
- 285 Antler tine, tip artificially sharpened, surface shaped and polished, V-shaped cut. 92 mm long. Area II. Middle Norse horizon, Room 10. Ill 50.
- 286 Antler tine, transverse cuts around end, apparently iron rivet. 76 mm long. Area II. Unstratified. Not illustrated.
- 287 Whalebone clamp (incomplete), flat base, curved top with rounded ends, decorated with dot-in-circle pierced at centre by corroded iron rod. 76 mm long. Area II. Lower Norse horizon, Room VI. Ill 50.
- 288 Two rectangular whalebone tablets, roughly cut. 90 mm × 60 mm × 10 mm (approx). Area II. Middle Norse horizon, Room 11. Not illustrated.
- 289 Fragment of shaped whalebone, rough surface, with crudely incised cross. 70 mm long. Area II. Upper Norse horizon, Room 13. Not illustrated.
- 290 Large whalebone implement, with large circular perforation at centre, one end with V-shaped cut, the other end forming a blunted hook. 290 mm long. Area II. Middle Norse horizon, Midden c. Ill 51.
- 291 Block of whalebone with large cup-shaped depression in centre. 127 mm long. Area II. Middle Norse horizon, Room 5. Ill 52.
- 292 Block of whalebone, perforated centrally, with wide grooves on either side. 85 mm × 70 mm. Area II. Middle Norse horizon, Midden b. THM. Ill 52.
- 293 Part of whale's rib with many cutmarks, probably used as cutting block. 750 mm long. Area II. Middle Norse horizon, Midden c. THM. Ill 50.

---

## CLAY

---

### MOULDS

#### Penannular brooches

- 294 Front half of two-piece mould for penannular brooch, zoomorphic terminals with cusps at junction to hoop, oval cartouche with circular setting at top of hoop. Broken in three parts and repaired. 52 mm × 45 mm. Area II. Pictish horizon, Zone 4, Phase a. Ill 13.
- 295 Back half of mould no 294. 55 mm × 48 mm. Area II. Pictish horizon, Zone 4, Phase a. Ill 13.
- 296 Fragment of front half of mould for penannular brooch, showing zoomorphic terminal similar to Brooch 300. 23 mm × 19 mm. Area II. Pictish horizon, Zone 1. Ill 13.
- 297 Fragment of front half of mould for penannular brooch, showing circular terminal. 21 mm × 31 mm. Area II. Unstratified. Ill 13.
- 298 Front half of mould for penannular brooch, slightly damaged, terminals trilobate with central circular setting and with cusps, oval panel with circular disc at top of hoop. 71 mm × 42 mm. Area II. Pictish horizon, Zone 1. Ill 13.
- 299 Back half of mould for penannular brooch (repaired), terminals probably zoomorphic. 64 mm × 43 mm. Area II. Lower Norse horizon, Room V, Phase 3a. (H and M. BB73: A12). Ill 13.
- 300 Front half of mould for penannular brooch, incomplete, zoomorphic terminals, oval cartouche with central setting. 28 mm × 29 mm. Area II. Lower Norse horizon, Room V, Phase 4a. (H and M. BB74: QA280). Ill 13, 14.
- 301 Fragment of back half of mould for penannular brooch, part of hoop and beginning of swelling for terminals. 30 mm × 40 mm. Area II. Unstratified. Ill 13.
- 302 Fragment of back half of mould for penannular brooch, part of hoop and terminal with large lobe. 20 mm × 47 mm. Area II. Unstratified. Ill 13.
- 303 Front half of mould for penannular brooch (incomplete), terminals circular, outlined by plain band; joined to wide hoop with plain band, oval panel with circular disc. 44 mm × 43 mm. Area II. Pictish horizon, Zone 4, Phase a. THM. Ill 16.
- 304 Fragment of front half of mould for penannular brooch showing part of hoop, and plain band for attachment to terminal. 36 mm × 20 mm. Area II. Pictish horizon, Zone 2. Ill 16.
- 305 Front half of mould for penannular brooch (incomplete) showing triangular terminals outlined by raised band with faint signs of ornamentation in centre, plain rings at junction with hoop. 38 mm × 35 mm. Area II. Pictish horizon, Zone 1. Ill 16.
- 306 Front half of mould for penannular brooch (incomplete) showing triangular terminals, plain rings at junction with hoop. 40 mm × 30 mm. Area II. Unstratified. Ill 16.
- 307 Fragment of front half of mould for penannular brooch showing ends of triangular terminals. 22 mm × 30 mm. Area II. Pictish horizon, Zone 4, Phase a. Ill 16.
- 308 Fragment of back half of mould for penannular brooch showing ingate and upper part of hoop. 35 mm × 22 mm. Area II. Pictish horizon, Zone 4, Phase a. Ill 16.
- 309a Fragment of front half of mould for penannular brooch, showing ends of triangular terminals. 15 mm × 28 mm. Area II. Unstratified. Ill 16.
- 309b Fragment of front of two-piece mould, worn, showing ends of triangular terminals of penannular brooch. Similar to 309a. 23 mm × 17 mm. Area II. Pictish horizon, Zone 1. Not illustrated.
- 310 Back half of mould for penannular brooch showing triangular terminals with up-turned ends. 58 mm × 46 mm. Area II. Pictish horizon, Zone 1. THM. Ill 16.

## Ornamental fragments

- 311 Front half of mould (incomplete), with matrix for bird's head in profile. 38 mm × 40 mm.  
Area II. Pictish horizon, Zone 4, Phase a. Ill 17.
- 312 Back half of mould (pair to 311), with matrices for 2 birds' heads, one in profile, one in plan. 41 mm × 40 mm.  
Area II. Pictish horizon, Zone 4, Phase a. Ill 17.
- 313 Fragment of mould with matrix for bird's head in profile (similar to 311). 25 mm × 27 mm.  
Area II. Pictish horizon, Zone 1. Ill 17.
- 314 Fragment of front half of mould showing half of circular disc with central setting surrounded by pellets. 19 mm × 25 mm.  
Area II. Pictish horizon, Zone 1. Ill 17.
- 315 Fragment of front half of mould with part of ingate leading to small panel, vertical and horizontal depressions. 26 mm × 20 mm.  
Area II. Unstratified. Ill 18.
- 316 Part of bottom of back half of mould, showing shallow hoop with rectangular panel enclosing horizontal lines. 37 mm × 28 mm.  
Area II. Unstratified. Ill 18.
- 317 Tiny fragment of mould with rectangular panel enclosing horizontal lines. 12 mm × 14 mm.  
Area II. Pictish horizon, unstratified. Ill 18.

## Finger and other rings

- 318 Back half of mould for finger ring with ornamental cluster of knobs. 50 mm × 45 mm.  
Area II. Pictish horizon, Zone 1. THM. Ill 18.



318

- 319 Back half of mould for finger ring (incomplete). 29 mm × 22 mm.  
Area II. Pictish horizon, Zone 1. Ill 18.
- 320 Fragment of mould, badly worn, for finger ring. 32 mm × 22 mm.  
Area II. Pictish horizon, Zone 6. Not illustrated.
- 321 Back half of mould for finger ring. 52 mm × 43 mm.  
Area II. Pictish horizon, Zone 2. Ill 18.

- 322 Back half of mould for finger ring (incomplete) with triangular extension. 40 mm × 76 mm.  
Area II. Pictish horizon, Zone 1. Ill 18.
- 323 Back half of mould (incomplete) divided ingate for two objects, one a ring. 30 mm × 40 mm.  
Area II. Unstratified. Ill 18.
- 324 Fragment of mould for two rings (incomplete). 29 mm × 27 mm.  
Area II. Unstratified. Ill 18.
- 325 Mould, incomplete, for small wide ring. 52 mm × 21 mm.  
Area II. Unstratified. Ill 18.
- 326 Circular fragment from front half of mould, probably broken off from centre of ring. 28 mm × 27 mm.  
Area II. Unstratified. Ill 18.

## Dress pins

- 327 End of front half of mould showing ornamental head and part of shaft, possibly for pin. 28 mm × 27 mm.  
Area II. Pictish horizon, Zone 1. Ill 18.
- 328 Back half of mould (incomplete) for 3 short thick pins, round heads. 66 mm × 64 mm.  
Area II. Pictish horizon, Zone 1. Ill 18.
- 329 Fragment of front half of mould, matrix for 2 round headed pins (incomplete) remaining. Similar to 328. 52 mm × 42 mm.  
Area II. Pictish horizon, Zone 1. Not illustrated.
- 330 End of back half of mould for pin with animal head. 27 mm × 23 mm.  
Area II. Pictish horizon, Zone 1. Ill 18.
- 331 End of back half of mould (incomplete) showing one pin, round head with collar, part of shaft with runner crossing to fragment of second similar pin. 56 mm × 20 mm.  
Area II. Pictish horizon, Zone 1. Ill 18.
- 332 Front half of mould (incomplete) showing one complete pin with barrel shaped head with collar, and traces of a second pin. 56 mm × 20 mm.  
Area II. Pictish horizon, Zone 4, Phase b, THM. Ill 18.
- 333 Back half of mould (incomplete) for two pins, round heads. Similar to 332. 46 mm × 24 mm.  
Area II. Pictish horizon, Zone 2. Not illustrated.
- 334 Fragment of back half of mould for two pins, incomplete, shanks only. 32 mm × 30 mm.  
Area II. Unstratified. Not illustrated.
- 335 Ingate and part of front half of mould for shank of single pin. 40 mm × 22 mm.  
Area II. Unstratified. Not illustrated.
- 336 Group of thirteen mould fragments for pins; 5 for multiple pins, 5 probably for single pins, 3 uncertain. From 10 mm to 35 mm long.  
Area II. Pictish horizon. Not illustrated.

## Incomplete objects, links and plates

- 337 Front half of mould for plate with oval shaped top. 44 mm long.  
Area II. Pictish horizon, Zone 4, Phase a. Ill 19.
- 338 Back half of mould for plate with oval shaped top. 69 mm long.  
Area II. Pictish horizon, Zone 2. Ill 19.
- 339 Front half of mould for plate, oval shaped top. 35 mm long.  
Area II. Unstratified. Not illustrated.
- 340 Terminal of mould for ring, incomplete, with broken attachment at top. 35 mm × 35 mm.  
Area II. Pictish horizon, Zone 4, Phase a. Ill 19.
- 341 Terminal of back half of mould for ring (incomplete). 35 mm × 25 mm.  
Area II. Unstratified. Not illustrated.

- 342 Front half of mould (incomplete) for small wide ring. 40 mm × 32 mm.  
Area II. Pictish horizon, Zone 2. Ill 19.
- 343 Centre part of front half of mould (incomplete) for plate with rectangular hollow at centre. 30 mm × 23 mm.  
Area II. Pictish horizon, Zone 4, Phase a. Ill 19.
- 344 Back half of mould (incomplete) with ingate and top of plate. 26 mm × 28 mm.  
Area II. Pictish horizon, Zone 1. Ill 19.
- 345 Fragment of front half of mould, pointed top of object with small bar across. 40 mm × 32 mm.  
Area II. Unstratified. Not illustrated.
- 346 Centre part of back half of mould for plate with curved sides. 30 mm × 38 mm.  
Area II. Unstratified. Ill 19.
- 347 Centre part of back half of mould for tapering plate with curved sides and small lugs. 35 mm × 36 mm.  
Area III. House Site D. Not illustrated.
- 348 Fragment of front half of mould showing base of rectangular plate. 26 mm × 25 mm.  
Area II. Pictish horizon, Zone 4, Phase a. Ill 19.
- 349 Centre part of mould for tapering plate with raised bar along centre, attached to a ring. 32 mm × 30 mm.  
Area II. Pictish horizon, Zone 2. Ill 19.
- 350 End of front half of mould for wide rectangular plate, slightly curved base and small sunk transverse panel. 35 mm × 32 mm.  
Area II. Unstratified. Ill 19.
- 351 End of back half of mould showing ring with smaller ring set at right angles. 46 mm × 40 mm.  
Area II. Pictish horizon, Zone 1. Ill 19.
- 352 Terminal of back half of mould for part of oval link, one side wider than the other. 36 mm × 32 mm.  
Area II. Pictish horizon, Zone 1. Ill 19.
- 353 Front half of mould (incomplete) for oval link, one side wider than the other. 45 mm × 40 mm.  
Area II. Pictish horizon, Zone 1. Ill 19.
- 354 Fragment of back half of mould for oval link with terminals not joined. 25 mm × 28 mm.  
Area II. Pictish horizon, Zone 1. Ill 19.
- 355 Fragment of back half of mould for oval object, possibly buckle. 48 mm × 35 mm.  
Area II. Pictish horizon, unstratified. Not illustrated.
- 356 Group of 8 mould fragments for curved objects (including H and M. BB74: QW 457, BB74: QG357).  
Area II. Pictish horizon, unstratified. Not illustrated.
- 363 Part of ingate of back half of mould showing socket for one pin. 35 mm long.  
Area II. Pictish horizon, Zone 4, Phase b. Ill. 22.
- 364 Similar to 363, part of ingate showing socket for two double-headed pins. 33 mm long.  
Area II. Pictish horizon, Zone 4, Phase b. Ill. 22.
- 365 Similar to 363 and 364, part of ingate showing sockets for two double-headed pins. 40 mm long.  
Area II. Pictish horizon, Zone 4, Phase a. THM. Ill 22.
- 366 Fragment of front half of mould with matrix for half of two flat double-headed pins. 22 mm long.  
Area II. Pictish horizon, Zone 4, Phase a. Ill 22.
- 367 Fragment of front half of mould with matrix (incomplete) for two flat double-headed pins. 22 mm long.  
Area II. Pictish horizon, Zone 4, Phase a. Ill 22.
- 368 Fragment of back half of mould for short single-headed pin with squared end to shank. 10 mm long.  
Area II. Unstratified. Not illustrated.
- 369 Fragment of back half of mould for single-headed pin. 15 mm long.  
Area II. Unstratified. Not illustrated.

### Larger objects

- 370 Fragment of front half of mould for tapering plate ending in trefoil, hollow centre and two open semicircular rings. 99 mm × 77 mm.  
Area II. Pictish horizon, Zone 1. Ill 20.
- 371 Large ingate for back half of mould. 45 mm × 56 mm.  
Area II. Unstratified. Ill 20.
- 372 Deeply curved ingate for front half of mould. 36 mm × 30 mm.  
Area II. Unstratified. Ill 20.
- 373 End of back half of mould showing matrix terminating in fish-tail design. 40 mm × 25 mm.  
Area II. Pictish horizon, Zone 1. Ill 20.
- 374 End of front half of mould for shallow expanding bar, heavy wide stain across mould. 51 mm × 48 mm.  
Area II. Pictish horizon, Zone 4, Phase b. Ill 20.
- 375 End of front half of mould, matrix defaced. 60 mm × 33 mm.  
Area II. Unstratified. Ill 20.
- 376 Back half of mould for long pin, small ingate, (repaired), end missing. 130 mm × 40 mm.  
Area II. Unstratified. Ill 20.
- 377 Circular plug. 30 mm × 27 mm.  
Area II. Pictish horizon, Zone 1. Ill 20.
- 378 Large lug (unused) of crucible. 40 mm × 42 mm.  
Area II. Pictish horizon, Zone 1. Ill 20.
- 379 End of back half of large mould for curved object. 37 mm × 49 mm.  
Area II. Pictish horizon, Zone 1. Ill 20.
- 380 End for back half of large mould. 30 mm × 50 mm.  
Area II. Pictish horizon, Zone 1. Not illustrated.
- 381 End for back half of large mould (incomplete) for transverse bar. 43 mm × 65 mm.  
Area II. Pictish horizon, Zone 4, Phase b. Ill 20.
- 382 Fragment of end of mould for hemispherical object. 25 mm × 27 mm.  
Area II. Unstratified. Ill 20.
- 383 Fragment of end of back half of mould for hemispherical object, circular key sockets. 11 mm × 30 mm.  
Area II. Unstratified. Ill 20.

### Small ornamental pins with single or double disc heads

- 357 Front half of mould (incomplete) for small, double-headed pins (matrix for three only remaining). 40 mm long.  
Area II. Pictish horizon, Zone 4, Phase b. Ill 22.
- 358 Back half of mould 357 (incomplete). 42 mm long.  
Area II. Pictish horizon, Zone 4, Phase b. Ill. 22.
- 359 Back half of mould, ingate and matrix for one double-headed pin only, possibly part of 358. 58 mm long.  
Area II. Pictish horizon, Zone 4, Phase b. Ill. 22.
- 360 Fragment of back half of mould showing matrix for one single-headed pin. 18 mm long.  
Area II. Pictish horizon, Zone 4, Phase b. Ill. 22.
- 361 Front half of mould (incomplete) showing matrix for heads of three double-headed pins. 42 mm long.  
Area II. Pictish horizon, Zone 4, Phase b. Ill. 22.
- 362 Fragment of front half of mould showing matrix for flat head of single-headed pin. 20 mm long.  
Area II. Pictish horizon, Zone 4, Phase b. Ill. 22.

### Mould fragments

- 384 Three small pointed forms, probably plugs.  
Area II. Pictish horizon. Not illustrated.

- 385a Thirteen fragments of ingates for large moulds, 9 front, 3 back, 1 unusual back ingate possibly for a multiple piece mould.  
Area II. Unstratified. Not illustrated.
- 385b Fifteen fragments of large moulds, unidentifiable. 35 mm to 60 mm long, 10 mm to 20 mm thick.  
Area II. Unstratified. Not illustrated.
- 386 Ingate of back half of mould possibly for two pins.  
Area II. Pictish horizon, Zone 1. Not illustrated.
- 387 Fifteen ingates for back half of small moulds, including 1 ingate (H and M. BB74: PZ276).  
Area II. Pictish horizon. Not illustrated.
- 388 Ten ingates for front half of small moulds, including 1 ingate (H and M. BB74: QX479).  
Area II. Pictish horizon. Not illustrated.
- 389 Twelve mould fragments of fine clay.  
Area II. Pictish horizon. Not illustrated.
- 390 Twenty-nine fragments of small moulds showing keys or key sockets.  
Area II. Pictish horizon. Not illustrated.
- 391 About 500 small fragments of moulds, mostly from Area II. Pictish horizon, Zone 4, also including fragments (H and M. BB74: QB388, BB74: PW226; BB74: QA304; BB74: QA306; BB74: QX477). Not illustrated.

#### CRUCIBLES, TUYÈRES, BLOW-PIPES ETC.

- 392 Crucible, bag-shaped, rounded base, D-shaped opening with small protuberances each side, base vitrified. 30 mm high.  
Area II. Pictish horizon, Zone 1. Ill 23.
- 393 Crucible, two fragments, incomplete, triangular opening with lip, pointed base. 44 mm high.  
Area II. Middle Norse horizon, Room 3. Ill 23.
- 394 Crucible, triangular opening with lip, rounded base. 33 mm high.  
Area III. House Site L. Ill 23, 24.
- 395 Crucible (incomplete), lug set high, rounded base, vitrification high up on sides and on top of lug. 42 mm high.  
Area II. Unstratified. Ill 23, 24.
- 396 Crucible, lug set high, rounded base, sides narrow at top, base vitrified. 40 mm high.  
Area II. Pictish horizon, Zone 1. Ill 23, 24.
- 397 Crucible, lug set half way, flat base, sides narrowing at top. 42 mm high.  
Area II. Pictish horizon, Zone 1. THM. Ill 23, 24.
- 398 Crucible, lug set low, flat base, sides narrowing, base vitrified. 42 mm high.  
Area II. Pictish horizon, Zone 1. Ill 23, 24.
- 399 Crucible, incomplete, lug set low, rounded base. 44 mm high.  
Area II. Pictish horizon, Zone 1. Ill 23, 24.
- 400 Crucible (incomplete, probably spoiled in firing), lug curving to top, rounded base, considerable burning, slight vitrification. 56 mm high.  
Area II. Pictish horizon, Zone 1. Ill 23.
- 401a Base of small crucible. Area II. Lower Norse horizon, Room V, Phase 4a (H and M. BB74: QA384). Not illustrated.
- 401b Small crucible fragments; 8 rounded bases, 7 pointed bases, 17 rim fragments, 11 lugs, 67 other pieces.  
Area II. Pictish horizon, Zones 4 and 5. Not illustrated.
- 402 Small crucible fragments, fired but unused.  
Area II. Unstratified. Not illustrated.
- 403 Large crucible fragments, 12 rim fragments, 6 other pieces and one lug.  
Area II. Pictish horizon. Not illustrated.
- 404 Fragment of very large crucible, heavily vitrified. 60 mm × 30 mm thick.  
Area II. Unstratified. THM. Not illustrated.
- 405 Tuyère (incomplete). 35 mm diameter at tip, 87 mm long.  
Area II. Lower Norse horizon, Area X. Ill 25.
- 406 Blow-pipe (incomplete). 7 mm diameter at base, 32 mm long.  
Area II. Lower Norse horizon. Area X. Ill 25.
- 407 Blow-pipe (incomplete). 33 mm long.  
Area II. Unstratified. Not illustrated.
- 408a Tuyère or large blow-pipe (incomplete). 17 mm tip diameter, 65 mm long.  
Area II. Pictish horizon, Zone 5, Phase 1b. (H and M. BB74: AQ12) Ill 25.
- 408b Twenty-four small fragments of burnt and/or vitrified clay, probably from tuyères or blow-pipes.  
Unstratified. Not illustrated.
- 408c Six large lumps, 55 mm to 100 mm long, and a few small fragments of heavily vitrified material.  
Unstratified. Not illustrated.
- 409 Fragment of straight-sided container, rectangular flat base. 40 mm × 25 mm.  
Area II. Pictish horizon. Unstratified. Not illustrated.
- 410 Crucible (incomplete) straight-sided, flat base, end rounded. 35 mm long.  
Area II. Pictish horizon, Zone 4, Phase b. Ill 25.
- 411 Crucible (incomplete), straight-sided, flat base, end rounded. 35 mm long.  
Area II. Pictish horizon, Zone 4, Phase b. THM. Ill 25.
- 412 Stopper or plug. 44 mm × 65 mm.  
Area II. Unstratified. Ill 25.
- 413 Circular dish, repaired, (incomplete), flat, round-edged rim. 88 mm diameter.  
Area II. Unstratified. Ill 25.
- 414 Fragment of round-edged rim for dish. 30 mm wide.  
Area II. Unstratified. Not illustrated.
- 415 Fragment of circular dish, rounded slightly undercut sides with seating for lid. 68 mm across.  
Area II. Unstratified. Ill 25.
- 416 Fragments, two, of circular dish with rounded sides and seating for lid (similar to 415). 45 mm × 35 mm across.  
Area II. Unstratified. Not illustrated.
- 416b: THM.
- 417 Rim fragment of straight-sided, circular dish. 40 mm long.  
Area II. Pictish horizon, Zone 1. Not illustrated.

---

#### BRONZE

---

- 418 Bronze pin (cast), the head spatulate, flattened. 30 mm long.  
Area II. Lower Norse horizon, Room VII. Ill 39.
- 419 Bronze pin (cast) with spatulate head (point missing). 50 mm long.  
Area II. Pictish horizon, Zone 2. Not illustrated.

- 420 Group of three fragments of pin shafts (sheet). 36 mm, 17 mm and 6 mm long.  
Area II. Pictish horizon, Zone 1. Not illustrated.
- 421 Bronze ring-headed pin with solid shank (incomplete); the head inlaid with four long panels of yellow enamel, and four squares of dark blue glass, each outlined in bronze, on a white enamel ground. Shank square in section, becoming round at break. 38 mm long, head 23 mm diameter.  
Area II. Stratigraphy uncertain, level equates either with Pictish horizon, Zone 1, or the lower Norse horizon, Area X immediately above. Ill 39.
- 422 Bronze pin with free circular head, the point of shank flattened. 77 mm long.  
Area II. Lower Norse horizon, Room VII. Ill 39.
- 423 Bronze pin (incomplete), rounded head, oval in section with brambling. 52 mm long.  
Area III. House Site B. Ill 39.
- 424 Bronze pin with crutch head, decorated with dot-in-circle. 76 mm long.  
Area III. House Site C. Ill 39.
- 425 Bronze pin with lozenge shaped head (projections broken off). 85 mm long.  
Area II. Lower Norse horizon, Passage 2. Ill 39.
- 426 Bronze pin with button head. 68 mm long.  
Area II. Upper Norse horizon, Room 13. Ill 39.
- 427 Bronze pin with fixed ring head above baluster moulding decorated with sunken dots. 110 mm long.  
Area II. Middle Norse horizon, Room 1, Ill 39.
- 428 Cast bronze pin with lozenge shaped head; on the front a pattern of silver wire inlaid round the central perforation, bordered by beading; two incised lines bordering the plain back; transverse mouldings on the edges. 120 mm long.  
Area II. Upper Norse horizon, Room 14. Ill 39.
- 429a Iron armlet (incomplete) encircled by eight open-ended bronze bands, similar to 429b. Estimated diameter of armlet 80 mm. Diameter of hoop 9 mm.  
Area II. Middle Norse horizon, Midden b. Ill 39.
- 429b Fragment of iron hoop decorated by four narrow bands of bronze. 9 mm diameter of hoop.  
Area II. Unstratified, but probably part of 429a. Ill 39.
- 430 Fragment of curved bronze rod. 6 mm diameter, 30 mm long.  
Area II. Middle Norse horizon, Room 3. Ill 39.
- 431 Bronze tweezers, formed of single long strip, 4 mm wide, fragment of bronze wire in loop forming arm. 57 mm high.  
Area II. Lower Norse horizon, Room VI. Ill 39.
- 432 Bronze strap end, each terminal in form of animal head with central panel of interlacing, split end (one fractured), one end perforated. 46 mm long.  
Area II. Middle Norse horizon, Room 4. THM. Ill 39.
- 433 Bronze strap end with rounded terminals in form of cross, split end (one fractured). 29 mm long.  
Area II. Pictish horizon, Zone 4, Phase b. Ill 39.
- 434 Bronze animal mask, rounded ears and large eyes, with secondary incisions. 29 mm × 17 mm.  
Area II. Middle Norse horizon, Room 5. Ill 39.
- 435 Bronze bar, triangular section, decorated, one end fractured, one perforated. 83 mm long × 4 mm wide.  
Area II. Lower Norse horizon, Room VII. Ill 39.
- 436 Seventeen fragments of sheet bronze, rolled up to form slightly tapering tubes. Lengths 40 mm to 12 mm by 7 mm diameter.  
Area II. Pictish horizon, Zone 4. Ill 39.
- 437 Circular bronze object, flat base, curved top. 14 mm diameter.  
Area II. Pictish horizon, Zone 5, Phase 1b (H and M. BB74: QW447). Ill 39.



428

- 438a Circular bronze disc, incomplete, ring of pellets between two plain bands. 11 mm diameter.  
Area II. Pictish horizon, Zone 5, Phase 1b. (H and M. BB74: QX451). Not illustrated.
- 438b Circular bronze disc, incomplete. 10 mm diameter.  
Area II. Pictish horizon, Zone 5, Phase 1b (H and M. BB74: QX451). Not illustrated.
- 439 Bronze disc, incomplete, perforated. Diameter (if complete) 20 mm.  
Area II. Pictish horizon, Zone 5, Phase 1b. (H and M. BB74: QX450a). Not illustrated.
- 440 Finger ring of wire, ends entwined to form bezel. 20 mm diameter.  
Area II. Lower Norse horizon, Room VII. Ill 39.
- 441 Ring of wide sheet bronze, corroded. 7 mm wide, 21 mm diameter.  
Area II. Middle Norse horizon, Midden b. Ill 39.
- 442 Ring of narrow sheet bronze, corroded. 21 mm diameter.  
Area II. Lower Norse horizon, Room VII. Ill 39.

- 443 Ring of thin sheet bronze, edges folded over. 18 mm diameter, 2 mm wide.  
Area II. Lower Norse horizon, Room IV. Ill 39.
- 444 Ring of cast bronze, section plano-convex. 17 mm diameter.  
Area II. Middle Norse horizon, Room 4. Ill 39.
- 445 Fragment of ring, cast bronze, circular section, section 3 mm. 26 mm diameter (approx).  
Area II. Pictish horizon, Zone 5, Phase 1b. (H and M. BB74: QW449). Not illustrated.
- 446 Ring of cast bronze, incomplete, section 1 mm plano-convex. 20 mm diameter.  
Area II. Pictish horizon, Zone 5, Phase 1b. (H and M. BB74: QW448). Not illustrated.
- 447 Twist of bronze wire with knot. 15 mm diameter.  
Area II. Lower Norse horizon, Room IV. Ill 39.
- 448 Small ring of cast bronze. Height 2 mm, section 11 mm.  
Area III. House Site B. Ill 39.
- 449 Penannular brooch with zoomorphic terminals, worn. 22 mm diameter.  
Area II. Pictish horizon, below lower Norse Room VI. THM. Ill 29.
- 450 Fragments of gilt-bronze disc brooch with animal and foliaceous interlaced ornament. 45 mm × 35 mm; 3 small fragments.  
Area II. Lower Norse horizon, Room VI. Ill 40.
- 451a Bronze filling of ingate; part of hoop of penannular brooch attached. 18 mm across top.  
Area II. Pictish horizon, Zone 1. Ill 21.
- 451b Bronze filling of mould ingate, incomplete. 18 mm across top.  
Area II. Unstratified. THM. Not illustrated.
- 452 Penannular brooch in five pieces, lobed terminals. 70 mm diameter.  
Area II. Lower Norse horizon, Room VI. Ill 15.
- 453 Fragment of terminal of bronze brooch. 27 mm diameter.  
Area II. Lower Norse horizon, Passage 1. Not illustrated.
- 454a Bar, bronze, narrowing at each end, rough surface. 140 mm long.  
Area II. Unstratified. Ill 26.
- 454b Bronze bar, rough surface, pointed ends. 43 mm long.  
Area II. Pictish horizon, Zone 2. Ill 26.
- 455 Bronze bar, rectangular section, square-ended narrowing at one end. 75 mm long.  
Area II. Unstratified. Ill 26.
- 456a Thick bronze bar, irregular roughly triangular section. 72 mm long.  
Area III. House Site D. Ill 26.
- 456b Thick bronze bar, rectangular section 72 mm. 72 mm long.  
Unstratified. Not illustrated.
- 457 Fragment of sheet bronze plating with rivet. 30 mm × 18 mm.  
Area II. Middle Norse horizon, Midden a. Ill 26.
- 458 Fragment of sheet bronze plating with rivet (broken in two). 46 mm × 16 mm.  
Area II. Pictish horizon, Zone 1. Ill 26.
- 459 Rod of bronze, circular section, one end curved. 50 mm long.  
Area II. Upper Norse horizon, Room 14. Ill 26.
- 460 Fragment of bronze vessel with curved edge, bound by iron band with bronze rivets. 38 mm × 42 mm.  
Area III. House Site B. Ill 26.
- 461 Thin bronze plate (incomplete). 44 mm long.  
Area II. Lower Norse horizon, Room V, Phase 4a. (H and M. BB74: PW251). Not illustrated.
- 462 Fragment of bronze sheet crushed and folded over to form parcel. 45 mm × 25 mm.  
Area II. Lower Norse horizon. Not illustrated.
- 463 Twist of bronze wire. 10 mm diameter.  
Area II. Pictish horizon, Zone 1. Not illustrated.
- 464 Four strips of sheet bronze folded to form 'paper-clip' rivets. 10 mm × 10 mm (approx).  
Area II. Pictish horizon, Zone 4, Phase a. Not illustrated.
- 465 Narrow strip of bronze twisted into a spiral. 8 mm diameter.  
Area II. Pictish horizon, Zone 5, Phase 1b. (H and M. BB74: QX450b). Not illustrated.

---

## IRON

---

- 466 Bar, broken at both ends, square section. 105 mm long, 15 mm wide.  
Area II. Lower Norse horizon, Room III. THM. Not illustrated.
- 467 Bell, sheet iron folded over and riveted, thought to have been bronze coated. 225 mm high × 175 mm wide by 100 mm across.  
Area II. Lower Norse horizon, Room VI. THM. Ill 31.
- 468 Slotted iron object ending in a point. 140 mm long.  
Area II. Unstratified. Ill 27.
- 469 Spear head, socketed (socket incomplete). 80 mm long.  
Area II. Pictish horizon, Zone 1. Ill 27.
- 470 Socket, fragmentary, pointed end broken off, the other flattened and bent round. 66 mm long.  
Area II. Lower Norse horizon, Area X. Ill 41.
- 471 Socket with pointed end, top corroded. 60 mm long.  
Area II. Pictish horizon, Zone 5, Phase 2a. (H and M. BB74: QV493). Ill 41, 41X.
- 472 Socket, point incomplete, end split and expanded. 90 mm long.  
Area II. Middle Norse horizon, Room 10. Ill 41, 41X.
- 473 Buckle, rectangular, pin corroded and misplaced. 46 mm long.  
Area II. Lower Norse horizon, Room VII. Ill 41, 41X.

- 474 Fragment of ring, corroded. 30 mm estimated diameter.  
Area II. Lower Norse horizon, Room IV. Not illustrated.
- 475 Ring, oval section, in two parts. 40 mm diameter (approx).  
Area II. Lower Norse horizon, Room IV. Ill 41.
- 476 Ring, corroded. 40 mm diameter.  
Area II. Lower Norse horizon, Room IV. THM. Ill 41X.
- 477 Rounded handle attached to a plate (incomplete). 54 mm long.  
Area II. Lower Norse horizon, Area X. Ill 41, 41X.
- 478 Knife blade, slightly curved, point incomplete, with broken tang. 76 mm long.  
Area II. Lower Norse horizon. Ill 41.
- 479 Tang of small knife, incomplete. 43 mm long.  
Area II. Unstratified. Not illustrated.
- 480 Plate, shaped, perforated, probably broken in half, with a square iron nail through one end. 40 mm long, nail 35 mm long.  
Area II. Middle Norse horizon, Midden b. Ill 41.
- 481 Rod, small, flattened, one end expanded in same plane as rod. 30 mm long.  
Area II. Middle Norse horizon, Midden a. Ill 41, 41X.
- 482 Small bar (incomplete), end flattened and sides turned in. 35 mm long.  
Area II. Lower Norse horizon, Room II. Ill 41, 41X.
- 483 Small bar, head flattened and distorted. 40 mm long. Unstratified. Ill 41.
- 484 Bar, one end broken, the other end apparently forked, now damaged. 90 mm long by 20 mm, and 3 mm thick.  
Area II. Middle Norse horizon, Midden a. Not illustrated.
- 485 Bar, broken at both ends, shallow D-shaped section. 120 mm long, 27 mm wide.  
Area II. Lower Norse horizon, Room III. Not illustrated.
- 486 Boat nail, head incomplete. 30 mm diameter, shank broken off at 30 mm.  
Area II. Lower Norse horizon. Passage 1. Ill 41.
- 487 Boat nail, head complete. 30 mm diameter, incomplete shank.  
Area II. Lower Norse horizon, Passage 1. Ill 41.
- 488 Nail head, perforated. 20 mm diameter.  
Area II. Unstratified. Ill 41.
- 489 Peg, large flat topped round head, thick shank. 62 mm long.  
Area II. Unstratified. Ill 41, 41X.
- 490 Nail head, with lumps of corrosion attached. 20 mm diameter.  
Area II. Lower Norse horizon, Room VII. THM. Ill 41, 41X.
- 491 Nail with flat head, corroded. 94 mm long, 15 mm diameter.  
Area II. Lower Norse horizon, Room VI. Ill 41X.
- 492 Nail shank with roove 25 mm diameter attached. 84 mm long.  
Area II. Lower Norse horizon, Room VI. Ill 41X.
- 493 Nail, small flat head at oblique angle. 70 mm long. 11 mm diameter.  
Area II. Unstratified. Ill 41X.
- 494 Nail, very corroded. Head 15 mm diameter, thick shank, 95 mm long.  
Area II. Lower Norse horizon, Room VI. Ill 41X.
- 495 Nail shank, point bent, corroded. 60 mm long.  
Area II. Unstratified. Not illustrated.
- 496 Group of three boat nail shanks, 40 to 60 mm long, and 1 nail with flat head, 70 mm long.  
Area II. Lower Norse horizon, Room VI. Not illustrated.
- 497 Nail shank with roove 25 mm diameter. 60 mm long.  
Area II. Lower Norse horizon, Room VI. Ill 41X.
- 498 Group of 4 fragments, probably from boat nails. One head 10 mm diameter with incomplete shank, three shanks 50, 44 and 40 mm long.  
Area II. Lower Norse horizon, Room VI. Not illustrated.
- 499 Furnace bottom. Diameter 130 mm (approx).  
Area II. Middle Norse horizon, Midden c. Not illustrated.
- 500a Furnace bottom. Diameter 120 mm (approx).  
Area II. Lower Norse horizon, Room V. Phase 4a. (H and M. BB74: QA314). Not illustrated.
- 500b Massive furnace bottom and 3 indeterminate fragments.  
Area III. House Site C. Not illustrated.
- 500c Eighteen lumps of iron slag.  
Unstratified. Not illustrated.
- 501 Large iron tool, edges turned over to form sleeves. 210 mm long by 75 mm wide.  
Unstratified. Not illustrated.
- 502 Group of fragments of from three to six boat nails with large flat heads. Traces of wood adhering. Diameter 42 mm to 35 mm.  
Area I. From grave. Not illustrated.
- 503 Nail with possibly square head. 17 mm by 20 mm.  
Area II. Not illustrated.

---

## LEAD

---

- 504 Lead spindle whorl. 22 mm diameter, 10 mm high.  
Area II. Middle Norse horizon, Room 9. Ill 53.
- 505 Lead spindle whorl or washer, much burnt. 27 mm diameter, 10 mm high (approx).  
Area II. Lower Norse horizon, Passage 2. Ill 53.
- 506 Lead spindle whorl. 24 mm diameter, 10 mm high.  
Area II. Middle Norse horizon, Room 3. THM. Ill 53.
- 507 Lead ferrule, formed from strip 4 mm wide bent in a circle with eyelet hole at each extremity. 21 mm diameter.  
Area II. Pictish horizon, Phase 2b. (H and M. BB73: AM9) THM. Ill 53.
- 508 Lead object, flat oval base. 21 mm × 10 mm tapering to narrow top.  
Area II. Middle Norse horizon, Room 1. Ill 53.
- 509 Lead disc with incised design of spirals. 50 mm diameter, 5 mm thick.  
Area II. Below lower Norse horizon, Room IV. Ill 30.

## JET

- 510 Jet armband (incomplete), rough finish, oval section. 12 mm across, 50 mm inside diameter, 70 mm outside diameter.  
Area II. Middle Norse horizon, Room 6. THM. Ill 42.
- 511 Jet armband (incomplete), wedge-shaped section. 20 mm wide × 6 mm thick; 63 mm inside diameter.  
Area II. Lower Norse horizon, Area X. THM. Ill 42.
- 512 Jet armband (incomplete), section D-shaped, plano-convex. 60 mm inside diameter.  
Area II. Lower Norse horizon, Room I. Ill 42.
- 513 Jet bead, circular (incomplete). 20 mm diameter.  
Area II. Lower Norse horizon, Area X. THM. Ill 42.
- 514 Jet finger ring (small fragment), plano-convex section. 20 mm diameter (approx).  
Area II. Lower Norse horizon, Room III. Ill 42.
- 515 Jet finger ring (incomplete), oval section 4 mm, 20 mm diameter.  
Area II. Lower Norse horizon, Room III. Ill 42.

## STONE

## SPINDLE WHORLS, DISCS AND RING

- 516 Spindle whorl, steatite, truncated cone. 32 mm diameter at base, 22 mm high.  
Area II. Lower Norse horizon, Room I. THM. Ill 43.
- 517 Spindle whorl, steatite, truncated cone. 34 mm diameter of base, 19 mm high.  
Area II. Lower Norse horizon, Room II. Ill 43.
- 518 Spindle whorl, steatite, truncated cone, two notches at either side of perforation. 30 mm diameter of base, 20 mm high.  
Area III. House Site M. THM. Ill 43.
- 519 Spindle whorl, steatite, conical. 30 mm diameter of base, 19 mm high.  
Area II. Middle Norse horizon, Room 8. Ill 43.
- 520 Spindle whorl, steatite, conical. 33 mm diameter of base, 22 mm high.  
Area II. Middle Norse horizon, Room 4. Ill 43.
- 521 Spindle whorl, steatite, conical. 36 mm diameter of base, 20 mm high.  
Area II. Middle Norse horizon, Room 8. Ill 43.
- 522 Spindle whorl, laminated sandstone, dome-shaped. 50 mm diameter, 15 mm high.  
Area II. Lower Norse horizon, Passage 1. Ill 43.
- 523 Sandstone blank for spindle whorl, dome-shaped, rudimentary borings on both sides. 45 mm diameter, 15 mm high.  
Unstratified. BSM. Ill 43.
- 524 Spindle whorl, siltstone, dome-shaped. 27 mm diameter, 10 mm high.  
Area II. Pictish horizon, Zone 1. THM. Ill 43.
- 525 Spindle whorl, laminated sandstone, dome-shaped. 47 mm diameter, 17 mm high.  
Area II. Pictish horizon, Zone 1. THM. Ill 43.
- 526 Spindle whorl, steatite, discoidal (incomplete). 40 mm diameter, 18 mm high.  
Area II. Middle Norse horizon, Room 5. BSM. Ill 43.
- 527 Spindle whorl, steatite, discoidal, sooted, made from fragment of cooking pot. 38 mm diameter, 14 mm high.  
Area II. Lower Norse horizon, Room V, Phase 4a. (H and M. BB74: PW229). THM. Ill 43.
- 528 Spindle whorl, steatite, discoidal, sooted, made from fragment of cooking pot. 42 mm diameter, 18 mm high.  
Area II. Lower Norse horizon, Room V, Phase 4b. (H and M. BB74: PR206). Ill 43.
- 529 Spindle whorl, steatite, discoidal, made from fragment of cooking pot. 42 mm diameter, 10 mm high.  
Area III. House Site C. THM. Ill 43.
- 530 Spindle whorl, steatite, discoidal. 30 mm diameter, 10 mm high.  
Area II. Unstratified. BSM. Ill 43.
- 531 Spindle whorl, red sandstone, ring shaped. 28 mm diameter, 10 mm high.  
Area II. Lower Norse horizon, Room V, Phase 4a (H and M. BB73: AG1) Ill 43.
- 532 Spindle whorl, steatite, ring shaped. 27 mm diameter, 15 mm high.  
Area II. Lower Norse horizon, Room IV. Ill 43.
- 533 Spindle whorl, fine grained sandstone, discoidal. 32 mm diameter, 18 mm high.  
Area III. House Site C. BSM. Ill 43.
- 534 Spindle whorl, sandstone, discoidal. 38 mm diameter, 18 mm high.  
Unstratified. BSM. Ill 43.
- 535 Spindle whorl, steatite, irregular, made from fragment of cooking pot. 42 mm diameter, 9 mm high.  
Area II. Unstratified. Ill 43.
- 536 Spindle whorl, fine grained sandstone. 43 mm diameter, 10 mm high.  
Area II. Pictish horizon, Zone 3. THM. Ill 43.
- 537 Spindle whorl, yellow claystone, discoidal. 40 mm diameter, 13 mm high.  
Area II. Lower Norse horizon. Area Y. Ill 43.
- 538 Spindle whorl, fine grained sandstone, discoidal. 41 mm diameter, 10 mm high.  
Area II. Lower Norse horizon, Passage 2. THM. Ill 43.
- 539 Spindle whorl, siltstone, discoidal. 38 mm diameter, 12 mm high.  
Area II. Lower Norse horizon, Room IV. Ill 43.
- 540 Spindle whorl, siltstone, discoidal. 34 mm diameter, 7 mm high.  
Area II. Lower Norse horizon, Room IV. Ill 43.
- 541 Spindle whorl, steatite, discoidal, made from fragment of cooking pot. 34 mm diameter, 8 mm high.  
Area II. Middle Norse horizon, Room 2. Ill 43.
- 542 Disc, siltstone, natural with central perforation. 40 mm × 30 mm.  
Area II. Middle Norse horizon, Room 2. THM. Ill 43.
- 543 Ring, fine-grained sandstone. 20 mm outer diameter, 10 mm inner diameter.  
Area III. House Site B. Ill 43.



- 544 Flat perforated disc, discoidal, sandstone. 25 mm diameter.  
Area II. Unstratified. THM. Ill 43.
- 545 Flat stone disc, tuffaceous sandstone, incomplete, trace of central perforation. 64 mm diameter × 9 mm thick.  
Area II. Pictish horizon, Zone 4, Phase b. Not illustrated.
- 546 Flat stone disc, sandstone, incomplete, trace of large central perforation. 55 mm diameter × 6 mm thick.  
Area II. Lower Norse horizon, Room IV. THM. Not illustrated.

## WHETSTONES

- 547 Perforated whetstone, siltstone, incomplete, rectangular section, incised decoration. 55 mm long.  
Area II. Middle Norse horizon, Midden b. Ill 44.
- 548 Perforated whetstone, siltstone, rectangular section. 63 mm long.  
Area II. Middle Norse horizon, Room 8. Ill 44.
- 549 Perforated whetstone, siltstone, square section. 73 mm long.  
Area II. Middle Norse horizon, Room 4. Ill 44.
- 550 Perforated whetstone, siltstone, rectangular section. 75 mm long.  
Area II. Unstratified. THM. Ill 43.
- 551 Perforated whetstone, partly split, slate, rectangular section. 88 mm long.  
Area II. Unstratified. Ill 44.
- 552 Perforated whetstone, broken at perforation, slate, rectangular section. 74 mm long.  
Area III. House Site C. THM. Ill 44.
- 553 Whetstone (top broken), slate, narrow section, rounded base. 75 mm long.  
Area II. Pictish horizon, Zone 5, Phase 1b. (H and M. BB73: AQ13). Ill 44.
- 554 Whetstone, incomplete, siltstone, one end upturned, square section. 115 mm long.  
Area II. Lower Norse horizon, Room 1. THM. Ill 44.
- 555 Whetstone, siltstone, rounded edges. 57 mm long.  
Area II. Middle Norse horizon, Room 1. Ill 44.
- 556a Whetstone, slate, rounded edges. 79 mm long.  
Area II. Middle Norse horizon, Room 2. THM. Ill 44.
- 556b Whetstone, schist, rounded edges. 112 mm long.  
Area II. Lower Norse horizon, Room V. Drain fill. (H and M BB74: Q1470.) Not illustrated.
- 557 Whetstone, incomplete, schist, haunched. 95 mm long.  
Area III. House Site M. THM. Ill 44.
- 558 Whetstone, incomplete, schistose granulite, haunched. 92 mm long.  
Area II. Middle Norse horizon, Room 8. Ill 44.
- 559 Whetstone, incomplete, schist, square section, chisel type. 70 mm long.  
Area II. Middle Norse horizon, Room 1. Ill 44.
- 560 Whetstone, fractured both ends, schist, square section, chisel type. 107 mm long.  
Area II. Middle Norse horizon, Room 6. Ill 44.
- 561 Whetstone, incomplete, slate, square section, chisel type. 155 mm long.  
Area II. Middle Norse horizon, Room 8. Ill 44.
- 562 Whetstone, incomplete, slate, rectangular section. 72 mm long.  
Area II. Middle Norse horizon, Midden a. Not illustrated.
- 563 Whetstone, incomplete, slate, rectangular section. 185 mm long.  
Area III. House Site K. THM. Not illustrated.

- 564 Whetstone, incomplete, slate, rectangular section. 105 mm long.  
Area III. House Site K. THM. Not illustrated.
- 565 Whetstone, fine grain sandstone, irregular shape. 160 mm long.  
Area II. Lower Norse horizon, Passage 1. Not illustrated.
- 566 Whetstone, siltstone, rounded edges. 200 mm long.  
Area II. Lower Norse horizon, Passage 1. Not illustrated.
- 567 Whetstone, incomplete, slate, irregular shape. 220 mm long.  
Area II. Lower Norse horizon, Room VI. THM. Not illustrated.
- 568 Whetstone, siltstone, square section. 246 mm long.  
Area II. Unstratified. Not illustrated.
- 569 Whetstone, siltstone, square section, incomplete. 80 mm long.  
Area II. Middle Norse horizon, Room 5. Not illustrated.

## OPEN MOULDS FOR CASTING METAL BARS

- 570 Flaggy sandstone, incomplete, matrix for wide bar. 92 mm long.  
Area II. Pictish horizon, Zone 1. Ill 28.
- 571 Sandstone, incomplete, worn matrix for one bar, secondary use as whetstone. 58 mm long.  
Area III. House Site C. THM. Ill 28.
- 572 Sandstone, incomplete, matrix for 1 wide, 1 narrow bar. 38 mm long.  
Area III. House Site C. Ill 28.
- 573 Fine-grained sandstone, triangular, incomplete, matrix for single bar one side, and for circular object the other. 82 mm long.  
Area II. Pictish horizon, Zone 1. Ill 28.
- 574 Steatite, incomplete, matrix for single bar. 95 mm long.  
Area II. Middle Norse horizon, Midden a. Ill 28.
- 575 Steatite, incomplete, matrices for 2 bars; made from side of vessel. 120 mm.  
Area II. Unstratified. Ill 28.
- 576 Steatite, incomplete, matrix for 1 bar, made from side of vessel. 145 mm long.  
Area II. Middle Norse horizon, Room 7. THM. Ill 28.
- 577 Steatite, incomplete, matrices for multiple bars. 145 mm long.  
Area II. Upper Norse horizon, Room 15. Ill 28.
- 578 Steatite, incomplete, matrices for multiple bars. 70 mm long.  
Area III. House Site C. THM. Ill 28.

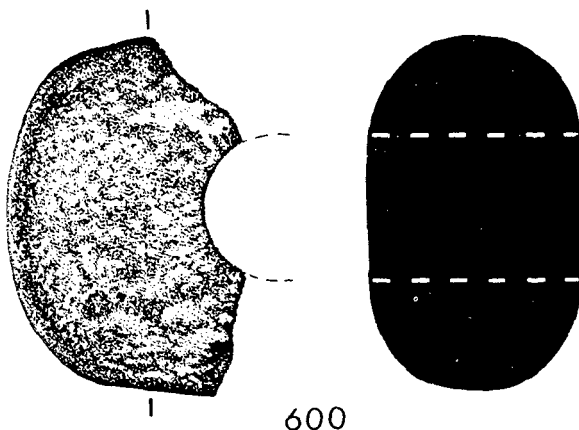
## FISHING AND OTHER WEIGHTS

- 579 Steatite, roughly shaped rectangle, one corner fractured, two perforations. 95 mm × 50 mm × 17 mm.  
Area II. Middle Norse horizon, Room 8. Ill 54.
- 580 Chlorite schist, natural stone with single perforation. 40 mm × 45 mm × 23 mm.  
Area II. Upper Norse horizon, Room 18. Ill 54.
- 581 Steatite, pear-shaped, single perforation. 105 mm × 80 mm × 50 mm.  
Area II. Middle Norse horizon, Midden a. THM. Ill 54.
- 582 Sandstone weight, oval, with groove round edge and short transverse groove across top. 146 mm × 115 mm × 72 mm.  
Area III. House Site D. THM. Ill 54.

- 583 Sandstone weight, one end and one side fractured, single groove down remaining side. 75 mm long. Area II. Middle Norse horizon, Room 8. III 54.
- 584 Miniature sandstone weight, nearly circular, with groove round edge and vertical and transverse grooves. Diameter 25 mm × 24 mm × 28 mm. Area II. Lower Norse horizon, Area X. III 45.
- 585 Steatite, miniature oblong weight, triangular cut at each end and grooved round edge. 25 mm long. Unstratified. THM. Not illustrated.
- 586 Sandstone fishing weight, rounded top with one perforation, broken across lower perforation, also pierced vertically to a height of 45 mm from flattened base. 130 mm long. Area III. House Site B. THM. III 54.
- 587 Steatite fishing weight (incomplete), probably broken fragment from vessel, straight top, with single perforation, curved sides, bottom fractured. 86 mm × 55 mm × 22 mm. Area II. Unstratified. THM. III 54.
- 588 Steatite fishing weight, straight top and base, curved sides, single perforation at each end. 95 mm × 35 mm × 32 mm. Area II. Middle Norse horizon, Room 9. III 54.
- 589 Steatite fishing weight, oval with rounded top and bottom, 2 perforations at top, 1 at bottom. 108 mm × 50 mm × 50 mm. Area II. Middle Norse horizon, Room 6. THM. III 54.
- 590 Steatite fishing weight (incomplete), oval with rounded top, single perforation, bottom fractured with groove across. 100 mm × 48 mm × 40 mm. Unstratified. III 54.

## MISCELLANEOUS

- 591 Circular disc, crudely formed, fine grained sandstone, partially drilled perforations on each side. 84 mm diameter × 15 mm thick. Area II. Lower Norse horizon, Room VIII. THM. Not illustrated.
- 592 Circular disc, fine grained sandstone. 60 mm diameter × 3 mm thick. Area I. Unstratified THM. Not illustrated.
- 593 Small circular disc, sandstone, crudely cut. 23 mm diameter × 5 mm thick. Unstratified. THM. Not illustrated.
- 594 Barrel-shaped object, sandstone, flat top. 35 mm diameter at centre, 22 mm base diameter, 39 mm high. Area II. Lower Norse horizon, Room IV. III 45.
- 595 Rounded pebble, flat base with incised lines resembling ogham characters. 42 mm diameter. Area II. Lower Norse horizon, Passage 1. THM. III 45.
- 596 Granite ball. 53 mm diameter. Area II. Lower Norse horizon, Room IV. THM. Not illustrated.
- 597 Natural stone, with circular depression at centre with pick marks probably natural. 45 mm × 45 mm × 15 mm thick. Area II. Lower Norse horizon, Room I. THM. III 45.
- 598 Crescent-shaped object (incomplete), in sandstone, both ends fractured, flat base towards one side, other side curved. 30 mm base at centre, 35 mm high. Area II. Unstratified. Not illustrated.
- 599 Hammerstone, natural beach stone, hammered at one end. 115 mm long. Area II. Middle Norse horizon, Room 8. THM. Not illustrated.
- 600 Butt end of a pestle-shaped Late Neolithic macehead of amphibolite, broken across the cylindrical shafthole. 48 mm × 24 mm × 30 mm. Area III. House Site F.



- 601a Pumic stone, perforated, rectangular. 50 mm × 25 mm × 17 mm. Area III. Unstratified. THM. III 45.
- 601b Part of pumice stone, broken across perforated, rounded end. 40 mm × 35 mm × 16 mm. Area II. Lower Norse Horizon, Room V. Drain fill. (H and M. BB74: Q1399) Not illustrated.
- 602 Oval pebble, polished. 37 mm long. Area II. Pictish horizon, Zone 1. THM. Not illustrated.
- 603 Circular beach stone, highly polished. 40 mm diameter × 18 mm thick. Unstratified. THM. Not illustrated.
- 604 Oval pebble, polished. 40 mm × 12 mm. Area II. Middle Norse horizon, Room 4. Not illustrated.
- 605 Two small flat circular perforated discs, 'bead spacers', slate. 12 mm diameter × 10 mm. Area III. House Site C. III 45.
- 606 Trial piece, in sandstone, with incised triangular segment with formless design. 55 mm × 45 mm. Area II. Lower Norse horizon, Room IV. THM. III 45.
- 607 Fragment of flaggy sandstone slab, one side dressed, incised cross with expanded rectangular arms on rectangular base (incomplete). 115 mm × 22 mm. Area II. Surface find. III 45.
- 608 Fragment of dark green porphyry, 2 sides dressed and polished. 36 mm × approx 20 mm × 15 mm thick. Area II. Pictish horizon, Zone 1. THM. Not illustrated.
- 609 Fragment of fossil. 30 mm long, 10 mm diameter. Area II. Below Room 5. THM. Not illustrated.
- 610 67 flints, including 11 worked fragments. Area III. Not illustrated.
- 611 6 pieces of quartz, possibly worked. Area III. Not illustrated.

## STEATITE VESSELS

- 612 Large oval bowl, incomplete reconstruction. Made up of fragments from Area III, the majority from House Site C. THM. III 46.
- 613 Three fragments of round bowl showing six repair holes with one iron tie still in position. Area III. House Site C. THM. Not illustrated.

- 614 Rim fragment of round bowl showing parts of two repair holes.  
Area II. Upper Norse horizon, Room 15. THM. Not illustrated.
- 615 Rim fragment of oval vessel.  
Area III. House Site D. Not illustrated.
- 616 Two rim fragments from large round bowl.  
Area III. House Site C. Not illustrated.
- 617 Three rim fragments and several body fragments from round vessel with flat rim bevelled downwards and outwards.  
Area II. Unstratified. Not illustrated.
- 618 Two rim fragments of a round bowl, sooted.  
Area III. House Site C. Not illustrated.
- 619 Part of bottom of an oval bowl, burnt.  
Area II. Lower Norse horizon, Room V, Phase 3a. (H and M BB74: QC330). Not illustrated.
- 620a Small rim fragment with beaded edge.  
Unstratified. Not illustrated.
- 620b Fragment of bowl with part of two perforations.  
Area II. Lower Norse horizon, Room V, Phase 4b. (H and M BB74: P0201). Not illustrated.
- 620c Fragment of thick bowl.  
Area II. Lower Norse horizon, Room V, Phase 4b (H and M BB74: PR207). Not illustrated.
- 620d Two sherds of bowl, possibly oval, sooted.  
Area III. House Site D. Not illustrated.
- 620e Seven sherds from at least three bowls.  
Unstratified. Not illustrated.

---

## POTTERY

---

(All the pottery is in THM)

- 621 Rim fragment. Hand-made, light brown-grey grass-tempered fabric.  
Blackened externally by fire.  
Rim diameter approx 120 mm. Area III, surface find. Ill 56.
- 622 Rim fragment. Hand-made, coarse gritty fabric, grey inside, light red outside. Blackened by fire.  
Area I, Courtyard, Ill 56.
- 623 Rim fragment. Hand-made, coarse gritty fabric, grey inside, light red outside.  
Area I. W apartment. Ill 56.
- 624 Rim fragment. Hand-made, grey inside, light red outside.  
Area I, surface find. Ill 56.
- 625 Base sherd. Hand-made, light brown-grey grass-tempered fabric, light red exterior.  
Area III, surface find. Ill 56.
- 626 Four fragments of a tall face-mask jug. Wheel-made, pale orange coloured fabric. Lustrous green glaze. Scarborough ware.  
Area I, surface find. Ill 56.
- 627 Eight fragments of a three-legged skillet. Wheel-made, light red fabric, golden brown glaze with purplish patches inside, unglazed outside. Probably Dutch.  
Rim diameter 102 mm, approx height 140 mm.  
Area I, surface find. Ill 56.
- 628 Part of the rim and handle of a small pitcher, also the terminal of the handle from the same pot decorated with finger-tip impressions. Wheel-made, light orange-coloured fabric, no evidence of glaze.  
Area I, surface find. Ill 56.
- 629 Body sherd bearing incised lattice-work decoration. Wheel-made, light green glaze. Possibly aquamanile fragment.  
Area I, surface find. Ill 56.
- 630 Base sherd of jug. Wheel-made, light orange-coloured fabric with a sparse light green glaze. Probably 16th/17th century.  
Area I, surface find, Ill 56.

---

## GLASS

---

### VESSEL FRAGMENTS

- 631 Body fragment decorated with marvered opaque yellow trail. Light blue.  
Area II. Pictish horizon, Zone 1. Not illustrated.
- 632 Body fragment decorated with applied rod wound with fine opaque white trail. Light blue.  
Area II. Pictish horizon, Zone 1. Not illustrated.
- 633 Body fragment. Opaque red. Colouring formed by layering of light and dark red glass giving streaked effect.  
Area II. Pictish horizon, Zone 1. Not illustrated.
- 634 Body fragment from mould blown vessel. Indications of corrugated ribbing. Probably from squat jar. Blue.  
Area II. Pictish horizon, Zone 1. Not illustrated.
- 635 Body fragment decorated with applied filigree rod containing opaque white spiral. Light blue.  
Area II. Pictish horizon, Zone 1. Not illustrated.

- 636 Rim fragment. Rounded, thickened and slightly out-turned rim. Probably from small hand cup. Light green.  
Area II. Pictish horizon, Zone 4, Phase a. Not illustrated.
- 637 Body fragments. Conical shaped vessel. Light blue.  
Area II. Pictish horizon, Zone 1. Not illustrated.
- 638 Body fragment. Conical shaped vessel. Light green.  
Area II. Pictish horizon, Zone 1. Not illustrated.

### WINDOW FRAGMENTS

- 639 Surviving unbroken edge grozed in straight line. Dark yellow. Maximum dimensions 14 mm × 9 mm.  
Area II. Pictish horizon, Zone 1. Not illustrated.
- 640 One curved edge grozed. Blue. Maximum dimensions 10 mm × 8 mm.  
Area II. Pictish horizon. Zone 1. Not illustrated.

- 641 Rectangular quarry. Chipped at one corner. Grozed on three edges. Badly weathered on all surfaces. Dark green. 40 mm × 14 mm.  
Area I. Cemetery. Not illustrated.

### GLASS AND GARNET OBJECTS

- 642 Fragment from semi-spherical mount. Manufactured using layers of opaque red and black glass paste. Outer surface smoothed and decorated with opaque white marvered trails set in loops.  
Area II. Pictish horizon, Zone 1. Not illustrated.
- 643 Waster. One end rounded with other end cut showing oval section. Outer surface wound with fine opaque white marvered trail. Probably from rod used in the production of mosaics or mounts. Opaque blue. Approx 8 mm × 4 mm.  
Area II. Pictish horizon, Zone 1. Not illustrated.
- 644 Fragment from square mount? Flattened base with right-angled corner. Opaque white marvering on exterior surface. Opaque blue. Estimated base dimensions 12 mm × 12 mm.  
Area II. Pictish horizon, Zone 1. Not illustrated.
- 645 Cube. Slightly damaged on one face. Probably used as a mosaic. Opaque light blue. Approx 6 mm × 6 mm × 6 mm.  
Area II. Pictish horizon, Zone 1. Not illustrated.
- 646 Fragment from semi-spherical mount. Manufactured around core of green glass. Exterior decorated with opaque white marvered trailing. Opaque black. Flat base of estimated diameter 20 mm – 25 mm.  
Area II. Pictish horizon, Zone 1. Not illustrated.
- 647 Fragment of semi-spherical mount. Manufactured around core of green glass. Exterior decorated with opaque white marvered trails in looped formation. Opaque blue.  
Area II. Pictish horizon, Zone 1. Not illustrated.
- 648 Garnet mount. Two adjacent edges chamfered. Probably used in jewelled setting. Square 4 mm × 4 mm. Thickness 1.1 mm.  
Area II. Pictish horizon, Zone 1. Not illustrated.
- 649 Fragment. Light green, frosted appearance.  
Area II. Pictish horizon, Zone 1. Not illustrated.

### BEADS (GLASS AND CARNELIAN)

- 650 Cylindrical. Decorated with crudely wound trails in opaque blue and red. Trails lost in places. Fine central bore. Opaque white. Length 22 mm. Diameter 10 mm.  
Area II. Lower Norse horizon, Area X. Ill 55.
- 651 Octagonal sided bead, carnelian. Length 21 mm. Diameter 11 mm. Octagonal faces each 21 mm × 4 mm. Diameter of central bore 2 mm.  
Area III. House Site K. Ill 55.
- 652 Circular with outer face showing eight evenly spaced undulations. Opaque blue. Diameter 13 mm. Diameter of bore 6 mm.  
Area II. Middle Norse horizon, Room 1. Ill 55.
- 653 Segmented bead. Three segments. Longitudinal striations on surface. Opaque blue. Length 16 mm. Maximum diameter 8 mm.  
Area II. Middle Norse horizon, Room 6. Ill 55.
- 654 Fragment of segmented bead split down long axis. Four segments. Opaque blue. Longitudinal striations on surface. Length 17 mm. Maximum diameter 6 mm.  
Area II. Lower Norse horizon, Room V, Phase 4a. (H and M. BB74: PW247). Not illustrated.
- 655 Circular. Unevenly formed. Pitted and with rough surface. Opaque green. Diameter 12 mm. Diameter of bore 4 mm.  
Area II. Upper Norse horizon, Room 13. Ill 55.
- 656 Fragment of circular bead. Opaque blue. Estimated diameter 10 mm.  
Area II. Lower Norse horizon, Room VII. Not illustrated.
- 657 Circular. Opaque blue. Diameter 9 mm. Diameter of bore 2.1 mm.  
Area III. House Site B. Ill 55.
- 658 Circular. Marvered opaque dark red trail interposed by three marvered opaque green/yellow dots around girth. Translucent blue/green. Diameter c 8 mm. Diameter of bore c 4 mm.  
Area II. Lower Norse horizon, Room V, Phase 3b. (H and M. BB74: QB333). Not illustrated.

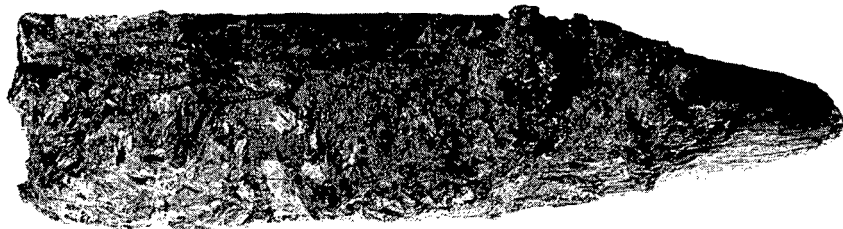
### OTHER MATERIALS

#### AMBER

- 659 Small fragments of amber.  
Area II. Lower Norse horizon, Room V, Phase 4a. (H and M. BB74: QA310). Not illustrated.

#### WOOD

- 660 Pointed, rounded handle with triangular socket, traces of iron adhering. Length 70 mm.  
Area II. Unstratified.



---

CATALOGUE INDEX

---

<b>BONE</b>	Cat Nos
Small pins (hipped type)	1-17
Larger pins and skewers	78-100
Large pins with perforated heads	101-129
Nail-headed pins	130-137
Needles	138-164
Picks and pointed bone implements	165-192b
Antler hair combs: double-sided	193-213
Single-sided combs: high backed	214-223
Single-sided combs: Norse types	224-230
Comb cases	231-233
Combs, miscellaneous fragments	234a-234b
Bone: miscellaneous	235-272
Bone: miscellaneous large objects	273-293
 <b>CLAY</b>	
<b>Moulds</b>	
Penannular brooches	294-310
Ornamental fragments	311-317
Finger and other rings	318-326
Dress pins	327-336
Incomplete objects, links and plates	337-356
Small ornamental pins with single or double disc heads	357-369
Larger objects	370-383
Fragments	384-391
Crucibles, tuyères, blowpipes etc	392-417
 <b>BRONZE</b>	
Miscellaneous	418-465
 <b>IRON</b>	
Miscellaneous	466-503
 <b>LEAD</b>	
Miscellaneous	504-509
 <b>JET</b>	
Miscellaneous	510-515
 <b>STONE</b>	
Spindle whorls, discs and ring	516-546
Whetstones	547-569
Open mould for casting metal bars	570-578
Fishing and other weights	579-590
Miscellaneous	591-611
Steatite vessels	612-620e
 <b>POTTERY</b>	
Miscellaneous	621-630
 <b>GLASS</b>	
Vessel fragments	631-638
Window fragments	639-641
Glass and garnet objects	642-649
Beads (Glass and Carnelian)	650-658
 <b>OTHER MATERIALS</b>	
Amber	659
Wood	660

---

## **8 APPENDIX :**

---

### **EXCAVATION OF ROOM 5 CLIFFTOP SETTLEMENT**

---

#### **BROUGH OF BIRSAY 1973-4**

---

#### **J R HUNTER AND C D MORRIS**

---

---

##### **8 : 1 THE SITE**

---

### **INTRODUCTION**

The excavation of this area, initiated by Mrs C L Curle, had as its primary purpose the relating of artifacts of known types paralleled elsewhere on the site to clear stratigraphical contexts. The excavation was therefore limited in scope to the area known in its latest site phase as Room 5 (Ill 3). Evidence from earlier excavations on the island indicated that Room 5 would be stratigraphically representative of the full range of occupation observed elsewhere.

Work was undertaken within and across the standing walls defining this room and the main N-S section drawing is illustrated below (Ill 61). The investigation was specifically problem-orientated and hence although the structural sequences and phases can be presented accurately, the interpretation of features encountered is more strictly limited owing to the relatively small area excavated. The emphasis of this short report is on the major phases distinguishable in the area enclosed by the walls of Room 5 and on the significant finds of artifacts recovered from the stratigraphical contexts within those phases. The more important artifacts are described in detail in Mrs Curle's catalogue where they are grouped and discussed in relation to similar objects from other parts of the site. Here they are simply listed, along with other recorded finds, within their appropriate contextual phases together with the necessary information for cross-referencing. Non artifactual material is also listed by phase, based on specialist identifications where appropriate by Dr T J Seller, Imperial College of Science and Technology, University of London (bone); Dr R F Tylecote, Department of Metallurgy, University of Newcastle Upon Tyne (metallurgical material); Mrs A M Donaldson, Department of Archaeology, University of Durham (wood and charcoal); and Mr F R Woodward, Tyne and Wear Museums Service (shell). Also included are two short reports on the charcoal and shell by Mrs Donaldson and Mr Woodward, and the substantial report on the animal remains prepared by Dr Seller. Other information from Room 5 less strictly relevant to the artifactual and cultural theme of this monograph will be included by the authors in the future publications of their respective excavations on other parts of the site. All records and documentation, including plans and photographs relating to this excavation are deposited in the National Monuments Record for Scotland.

### **THE EXCAVATION**

With the exception of the latest occupation level which had been extensively consolidated by the former Ministry of Works, the area examined had been undisturbed by previous excavations and provided an informative sample investigation. The work, which was completed in the summer of 1974, revealed four distinguishable major phases of occupation mostly identified by flagged flooring levels or structural modification. Between each major phase accumulation or deliberate levelling had occurred and the majority of objects belong to these contexts. A part of the material may therefore be residual but is nevertheless a valid indicator of overall trend, particularly with regard to the faunal