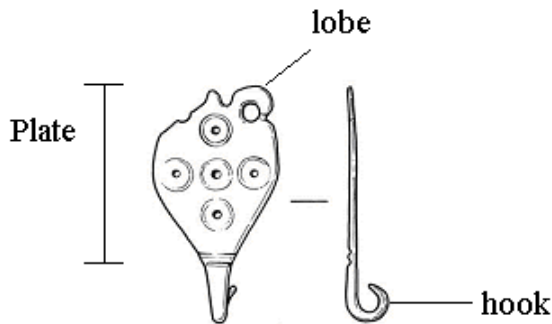


Anglo-Saxon Hooked Tags



Classification

plate shape + decoration +
presence/absence lobes (a/b)

Class A (circular plate)

Class A1 (ring-and-dot decoration)

*Class A1i (ring-and-dot decoration in
a cruciform motif)*

Class A2 (incised/punched decoration)

Class A2i (geometric)

Class A2ii (cruciform)
e.g. Class A2iib (no lobes)



SF-544A88

Class A3 (undecorated)
Class A3b (no lobes)



SF-C8A853

Class A4 (niello/silver-wire)

Class A5 (Ringerike/Urnes-related)
Class A5a (lobed)



NLM1064

*Class A6 (floriolate- with or without
niello)*

Class A7 (anthropomorphic)

e.g. 2: Class A7b (no lobes)



NARC-82E223 (anthropomorphic?)

Class A8 (pelleted)

Class A9 (perforated types)

Class A10 (Winchester style)

Class B (shield-shaped plate)

Class B1 (ring-and-dot decoration)
e.g. Class B1a (lobed)



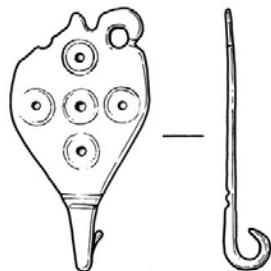
SF-4FF935

e.g. 2 Class B1b (no lobes)



SF-3D3C81

Class B1i (ring-and-dot decoration in a cruciform motif)
e.g. Class B1ia (lobed)



SF9732

Class B2 (incised/punched decoration)

Class B2i (geometric)

Class B2ii (cruciform)

Class B3 (undecorated)
e.g. Class B11b (no lobes)



SF-512F20 (shield, undecorated)

Class B4 (niello/silver-wire)

e.g.
NMS-F09465 (shield, niello/silver wire)

NO IMAGE

Class B5 (floriolate- with or without niello)

e.g. Class B7a (lobed)



ESS-B2ABB3 (shield, floriolate/niello)

Class B6 (other)



SF-D2AF91 drilled holes, gilt)

Class C (triangular plate)

Class C1 (ring-and-dot decoration)

e.g. Class C1b (no lobes)



SF3981

e.g. 2: Class C1a (lobed)



SF-8FFB72 (triangular, lobed, r&d)

Class C1i (ring-and-dot decoration in a cruciform motif)

e.g. Class C1ib (no lobes)



SF-4DDBB1

Class C2 (incised/punched decoration)

e.g. Class C2b (no lobes)



GLO-1E1BF7

Class C2i (geometric)

e.g. Class C2ib (no lobes)



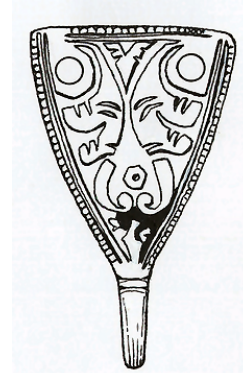
NLM-99F413

Class C2ii (cruciform)

Class C3 (undecorated)

Class C4 (niello/silver-wire)

e.g. class C4b (no lobes)

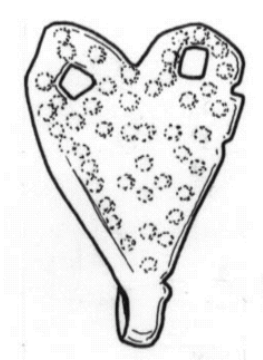


SUR-E4FAE7

Class C5 (Trehiddle)

Class C6 (repoussé)

e.g. Class C9a (lobed)



SF3692

Class C13 (Winchester style)

Class D (tear-drop shaped plate)

Class D1 (incised/punched decoration)

Class D1i (geometric)

e.g. Class D2ia (lobed)



SF10451

Class D1ii (cruciform)

e.g. Class D2iib (no lobes)



NMS-2EC1A5

Class D2 (undecorated)

Class D3 (niello/silver-wire)

e.g. class D3a (lobed)



SF9916 (niello/Ag-wire)

Class D4 (Ringerike-style)

Class D4b (no lobes)



DENO-93DBE4 (Ringerike?)

Class D5 (Trehiddle)

Class D7 (floriate- with or without niello)

Class D6 (perforated)

Class E (uncommon other types)

Class E1 (lozengiform plate)

Class E1a (lobed)



SF-084921 (lozengiform)

Class E2 (square plate)



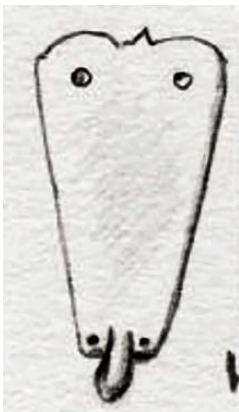
DENO-A22677 (sub-square, undecorated, v. crude)

Class E3 (zoomorphic plate)



KENT-8FD147 (silver)

Class E3 (trapezoidal plate)



NLM931