

Assessment of non-pottery finds from Wawne, East Yorkshire (OSA02 EX02)

Alan Vince

Forty-nine non-ceramic objects were submitted for identification and assessment. These include two fragments of animal bone and six fragments of stone found within the pottery and ceramic building material and discarded.

The remaining finds are described and discussed here by material.

Catalogue

Copper Alloy

Three copper alloy artefacts were identified. These comprise the bowl of a spoon (SF20), a buckle (SF1) and a strap end (SF5).

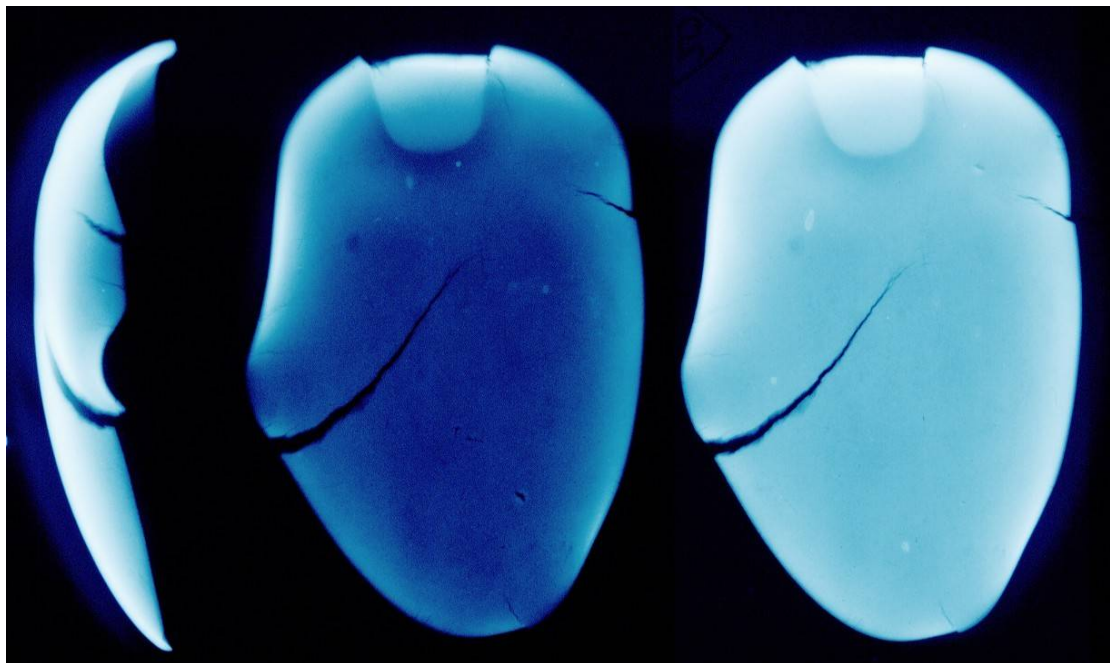


Figure 1. X-Radiograph of copper alloy spoon, SF20

Context 1037 SF20. Spoon. The bowl of an oval spoon which has been deliberately bent and snapped. The bowl has a low moulding at the base of the handle and is of an oval form. Both the form and the moulding suggest that this is a post-medieval object. Although identified visually as copper alloy the composition of the metal is uncertain.

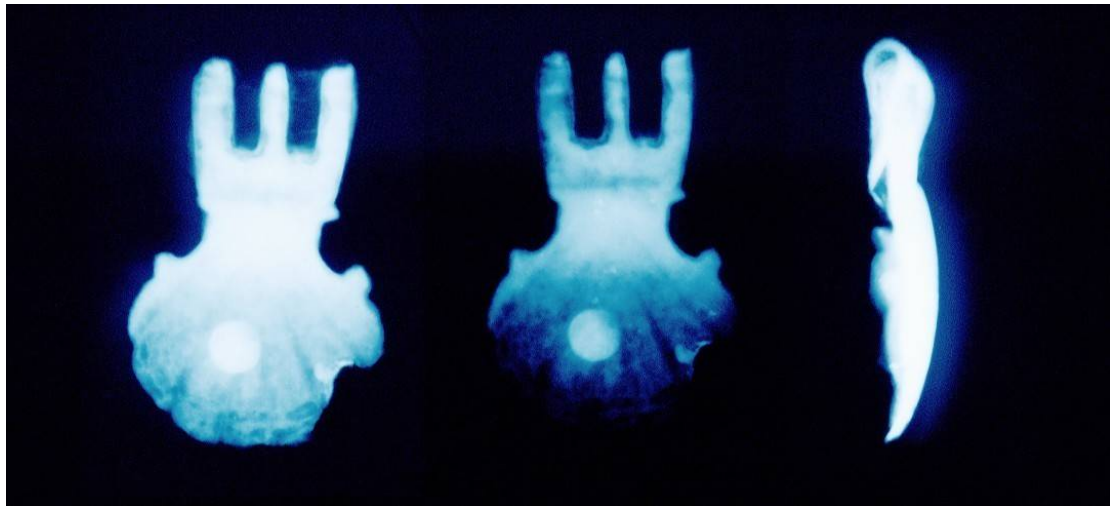


Figure 2 X-Radiograph of copper alloy buckle, SF1

Context 1161 SF1. Buckle. The plate of a small buckle. The object has been cast in the form of a scallop shell with two slots for the pins and a circular pin for riveting on the strap. The slotted end has then been folded back on itself to secure the buckle and pins, neither of which survive. There are traces of gilding on the upper surface. A similar buckle but with only a single slot has been published from London (Ward Perkins 1940 #25533, 272, Pl.LXXVI).

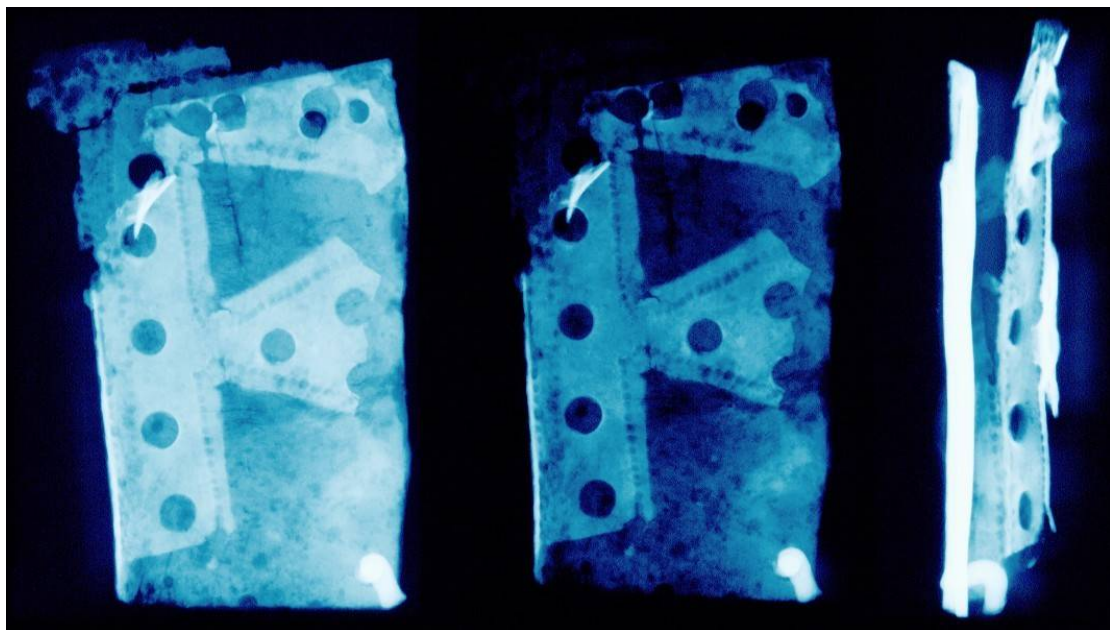


Figure 3 X-Radiograph of copper alloy strap end, SF5

Context 1220. SF5. Strap end. A sheet metal strap end formed of a single sheet which has been decorated with openwork, traced lines and small circular holes. The strap end was attached by two circular copper alloy rivets, one of which survives. This form of decoration is probably late medieval or early post-medieval in date.

Clay Tobacco Pipe

Two fragments of clay tobacco pipe were recovered from context 1055. One is from a mid 17th-century heeled bowl and the other is a stem fragment with a bore diameter typical of the 17th century.

Glass

Five fragments of glass were recovered. SF21 has a similar appearance to Roman glass but given the complete absence of Roman finds from the site it is more probably of post-medieval date. Light blue glass, probably coloured by cobalt, was in use by the late 16th century and similar glass, known as 'durable blue', was used as window glass in the medieval period. This piece may therefore be worth submitting for specialist study. The dark green bottle glass (SF11 and SF7) is typical of that made in England from the 1650s onwards but without typological features no closer date is possible. The light green window glass, SF32, is forest glass of the kind made both in England and the continent from the late medieval period to the end of the 17th century. It may well be contemporary with the bottle glass from the same context.

Context 1037. SF21. Bottle. Light blue glass.

Context 1022. SF11. Bottle. Dark green glass.

Context 1022. SF32. Window. Light green glass.

Context 1001. SF7. Bottle. Dark green glass.

Unstrat. SF26. Bottle.

Iron

Twenty one fragments of iron were recorded. These include two fragments of natural iron pan and one unstratified lump, all of which were not further studied. The remainder were x-rayed and the following description is based on a study of the x-radiographs and the objects themselves.

The majority of the finds are either structural ironwork or horse furniture. The structural ironwork consists mainly of nails. Only five had complete shanks and these ranged from 33mm to 55mm in length with a single example 122mm long (SF31). This massive nail has traces of wood grain preserved in the corrosion products on one side only and might therefore have been lying next to a piece of wood rather than buried within one. There is no trace of a head for this nail and it is just possible that it is the tine of a fork, rake or similar implement.



Figure 4 X-Radiograph of iron staple, SF24

Other structural items include a staple (SF24), probably used with a hasp and possibly a padlock or metal wedge to provide a simple locking device for a door, gate or large box or chest, and a pintle, used as the support for a wooden shutter, door or gate.



Figure 5 X-Radiograph of iron key, SF16

A complete key, SF16, is of Ward Perkins type IV (Ward Perkins 1940 #25533, 138-9) which covers a range of types used as chest and casket keys as well as for doors. The type, when provided with tothing along the edge as in this example, is probably 13th-century or later. The x-radiograph shows the presence of non-ferrous plating. Together with the small size this might suggest that the key was used with a casket.

Horse furniture consists of a horseshoe (SF12, 13 and 14) and a fiddle key nail for use with such a shoe. The horseshoe has a plain outline and is of late medieval or later date.

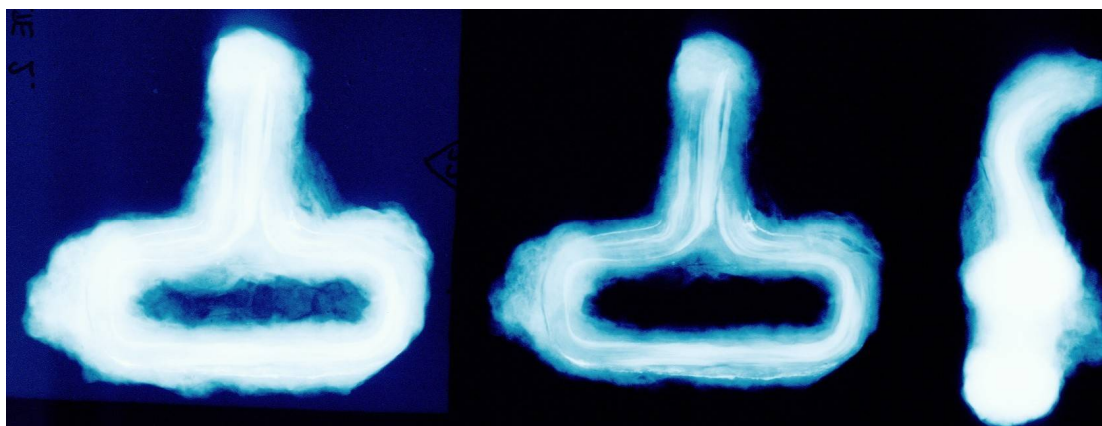


Figure 6 Iron Hook Fastener, SF22

Finally, there is a hook fastener, SF22 from context 1057, made from a single rod of iron bent into a sub-rectangular loop with a hook, broken off. There are possible traces of non-ferrous plating visible in the x-radiograph. This style of fastener is well-known in the post-medieval period where it is usually smaller and made from copper alloy. However, a similar example was excavated in an 18th-century prison cemetery at Launceston castle, Cornwall (Mould forthcoming).

Table 1

Context	REFNO	Subfabric	Form
1139	SF39	Pan	Natural
1149	SF4		NAIL?
1151	SF16		Key
1155	SF27.1		NAIL
1155	SF27.2		OBJECT
1055	SF19		Nail
1057	SF22		HOOK
1057	SF23		Nail
1057	SF24		STAPLE
1057	SF37	Pan	Natural
1133	SF31		NAIL
1135	SF33		tool?
1063	SF18		Nail
1041	SF28		Nail
1042	SF30		Nail
1163	SF38		Nail
1197	SF12/13/14		HORSESHOE
1220	SF17		FIDDLE KEY NAIL
1001	SF29		Nail

 surface 35

pintle

Lead alloy

A single lead artefact was recovered, SF25. It consists of a repair patch of roughly rectangular shape. The lead has been melted and poured into a rectangular hole in a vessel or other object about 2mm thick. The surface onto which the lead was poured was rough but has left no identifiable impression such as would be found with wood, earth or sand. Probably, a piece of stone was placed under the hole. No attempt to smooth over the patch was made and it is possible that this was a temporary or failed repair.

Stone

Flint

A single piece of flint was submitted (SF36, from context 1195). It is most probably not a humanly-worked artefact or waste and is likely to have been accidentally struck during ploughing.

Other stone

Twelve fragments of stone were submitted, of which six are probably unworked pebbles from the drift and a seventh is a ammonite which might have been deliberately collected as an amulet although it too may be natural. The remainder consist of hones, all of sandstone (SF9, 10 and 15), a jet bracelet fragment (SF3) and a spindle whorl (SF2).

Context	REFNO	subfabric	Form
1057	3	Jet	bracelet
1057	8	Jurassic limestone	fossil ammonite
1071	10	micaceous sandstone	hone
1101	9	medium-grained sandstone	hone
1057	15	medium-grained sandstone	hone
1037		Sandstone	natural
1037		Sandstone	natural
1037		dark grey limestone	natural
1139		Millstone Grit? Large muscovite flakes	natural
1149		black shale	natural
1041		Aplite	natural
1111	2	Mudstone	spwh

Stratigraphy

Seventeen of the objects come from the fills of features which have no ceramic date. Of these, those whose contextual date should be established are: two of the hones, the horseshoe, the key, the lead repair and the copper alloy strap end.

Table 2

Area	context group	Context	REFNO	class	Form
------	---------------	---------	-------	-------	------

Elliptical feature	1072	1071	10	STONE	hone
features to sw	1102	1101	9	STONE	hone
section across large spread	1198	1197	12/13/14	iron	HORSESHOE
further sw	1151	1151	16	iron	key
further sw	1158	1155	25	LEAD	object
section across large spread	1198	1220	5	copp	strap end

No non-ceramic finds were stratified with 12th/13th-century pottery and the remainder were either found in late medieval, post-medieval or unstratified contexts.

In one case, context 1055, the finds are later than the *tpq* given from associated or stratigraphically earlier pottery. This is probably also true of the spoon bowl from context 1037 and the glass bottle from the same context

The collection from late medieval strata is quite small, a total of 12 objects: the copper alloy buckle, the iron hook, five nails, the iron staple, the jet bracelet, the spindle whorl and a hone.

Those finds from post-medieval contexts comprise a nail, the bottle and window glass and the clay tobacco pipes.

Assessment

The site produced a very small quantity of non-ceramic finds considering the quantity of pottery and ceramic building material. This is itself of some interest and suggests that the site status may not be as high as the pottery imports might suggest. A few of the finds, 9 in total, require further study. These include the jet bracelet, the copper alloy buckle, the spindle whorl, the lead repair patch and four iron objects. All of these require illustration and the writing of a catalogue entry which may require some comparative research. These should then be combined with a revised version of this assessment to form a report suitable for publication.

Costing

Illustrating nine finds	2 days	£120 per day	£240
Paste-up of drawings	0.5 day	£120 per day	£60
Comparative research	0.5 day	£168 per day	£84
Updating of report for publication	1 day	£168 per day	£168
Total	4 days		£552

Appendix: List of Registered and other non-ceramic finds

Context	REFNO	class	cname	subfabric	Form	Nosh	NoV	Action	Description
1001	29	iron	iron		nail	1	1		XRAY OSA02:1;BENT SQUARE-SECTIONED SHAFT
1001	7	glas	pmgl	dk green	bott	1	1		
1020		anbn	anbn			1	1		
1022	11	glas	pmgl	dk green	bott	1	1		
1022	32	glas	pmgl	light green	window	1	1		
1037		anbn	anbn			1	1		
1037		STONE	stone	sandstone	natural	1	1		
1037		STONE	stone	sandstone	natural	1	1		
1037		STONE	stone	dark grey limestone	natural	1	1		
									XRAY OSA02:2; OVAL BOWL WITH ROUNDED MOULDING AT JOIN WITH STEM;BENT AND SNAPPED AT HANDLE JOIN;METAL ID DOUBTFUL;BOWL DIMENSIONS 45MM BY
1037	20	copp	copp		spoon	1	1	specialist	29MM
1037	21	glas	glas	light blue roman?	bott	1	1		
1041		STONE	stone	aplite	natural	1	1		
1041	28	iron	iron		nail	1	1		XRAY OSA02:1;SQUARE-SECTIONED SHAFT AND ROUND HEAD
1042	30	iron	iron		nail	1	1		XRAY OSA02:3;BENT SHAFT;FLAT HEAD OF UNCERTAIN SHAPE
1055		CTP	ctp		pipe	1	1		M17th C bowl with heel
1055		CTP	ctp		pipe	1	1		17th C cut mouthpiece
1055	19	iron	iron		nail	1	1		XRAY OSA02:1; SQUARE-SECTIONED SHAFT AND

							CIRCULAR HEAD 19MM DIAM	
1057	15	STONE	stone	medium-grained sandstone	hone	1	1	
1057	22	iron	iron		HOOK	1	1draw	XRAY OSA02:2; MADE FROM A SINGLE ROD OF SQUARE-SECTIONED METAL;POSSIBLE NFP
1057	23	iron	iron		nail	1	1	XRAY OSA02:1
1057	24	iron	iron		STAPLE	1	1draw	XRAY OSA02:1
1057	3	STONE	stone	jet	bracelet	1	1specialist	
1057	37	iron	iron	pan	natural	1	1	
1057	8	STONE	stone	Jurassic limestone	fossil ammonite	1	1	
1063	18	iron	iron		nail	1	1	XRAY OSA02:1;OVAL HEAD
1071	10	STONE	stone	micaceous sandstone	hone	1	1	
1101	9	STONE	stone	medium-grained sandstone	hone	1	1	
1111	2	STONE	stone	mudstone	spwh	1	1draw	
1133	31	iron	iron		NAIL	1	1	XRAY OSA02:1; SQUARE-SECTIONED TAPERING SHAFT; TRACES OF WOOD GRAIN
1135	33	iron	iron		tool?	1	1	
1139		STONE	stone	Millstone Grit? Large muscovite flakes	natural	1	1	
1139	39	iron	iron	pan	natural	1	1	
1149		STONE	stone	black shale	natural	1	1	
1149	4	iron	iron		NAIL?	1	1	XRAY OSA02:1;TAPERING SHAFT WITH POSSIBLE EVIDENCE FOR HEAD;MODERN BREAK AT HEAD END
1151	16	iron	iron		key	1	1draw	XRAY OSA02:2;NFP ON BUSINESS END;KIDNEY-SHAPED

							HANDLE
1155	25	LEAD	lead	object	1	1draw	ROUGHLY RECTANGULAR REPAIR
1155	27.1	iron	iron	NAIL	1	1	XRAY OSA02:1;SQUARE-SECTIONED SHAFT
1155	27.2	IRON	IRON	OBJECT	1	1	XRAY OSA02:1; AMORPHOUS LUMP;NO SIGN OF SOLID METAL IN XRAY
							XRAY OSA02:2;CAST:WITH SPRUE ON UNDERSIDE;PLATE IS IN THE FORM OF A SCALLOP SHELL;THE BODY IS FOLDED BACK ON ITSELF TO CONTAIN THE BUCKLE;TWO SLOTS INDICATE TWO PINS;TRACES OF GILDING ON UPPER SURFACE;DECORATION IN THE FORM OF GROOVES ON THE PLATE
1161	1	copp	copp	BUCKLE	1	1draw	
1163	38	iron	iron	nail	1	1	
1195	36	stone	flint	natural or flake?	1	1	
1197	12/13/14	iron	iron	HORSESHOE	3	1draw	XRAY OSA02:3;ABOUT ONE THIRD PRESENT;PLAIN EDGED;TWO RECTANGULAR HOLES;16MM WIDE AT FRONT;23MM WIDE AT SIDE;FOLDED OVER AT ENDS
1220	17	iron	iron	FIDDLE KEY NAIL	1	1	XRAY OSA02:3;HEAD 10MM TALL AND 9MM WIDE IN XRAY
1220	5	copp	copp	strap end	1	1	XRAY OSA02:2;FORMED OF SHEET FOLDED OVER; TOP DECORATED WITH OPENWORK, GROOVED LINES AND CIRCULAR HOLES;ONE CIRCULAR CU ALLOY RIVET IN PLACE
surface	34	iron			1	1	
surface	35	iron	iron	pintle	1	1	
us	26	glas	pmgl	bott	1	1	