

Assessment of the medieval and later pottery from the Hadlow to High Haldon pipeline (HHH01)

Alan Vince

One thousand, one hundred and thirty six sherds of post-Roman pottery were recovered from the line of the Hadlow to High Haldon pipeline during fieldwork by Network Archaeology (Site Code HHH01).

This material ranged in date from the Saxo-Norman period (ie undatable to either side of the Norman conquest) up to the recent past. Two medieval occupation sites were investigated: 46/2 and 49/5. In addition, smashed vessels, which are unlikely to be a refuse scatter from occupation elsewhere, were recovered from sites 57/1 and 47/2. Sherds of later pottery were found in stratified deposits on two sites: 43/4 and 29/3.

Medieval, late medieval and later pottery occurred on several sites but always in small quantities and often consisting of wares spanning a wide period of time. This material is probably not indicative of occupation but neither is it as abraded as one might expect from a manuring scatter. It presumably indicates casual activity on and around the sites. There was very probably an increase in intensity c.1500 and a further increase in the late 18th to 19th centuries, although it has to be remembered that pottery was probably much more common after c.1750 than previously.

Description

There is no pottery from the pipeline which dates between the 5th and the 10th centuries. Pottery was used in the southeast throughout this period and its absence certainly seems to indicate a lack of permanent settlement close to the pipeline. The only other possible explanation for this hiatus is that the area was inhabited by groups with a different material culture in which pottery played little or no part.

Saxo-Norman

Thirty-seven sherds were assigned to the Saxo-Norman period. They represent no more than 29 vessels and come from three sites: 27/3, 47/2, and 49/5 (Table 1). Of these, only the latter produced more than a single sherd. All of the pottery is tempered with fragments of shell and has an inclusionless groundmass. There is no evidence for wheel-throwing. All of vessels are jars, mainly used for cooking. There are six rims of which two were everted and one had a flat top. The latter form became the norm in the south-east by the middle of the 12th century and is absent from large assemblages of 11th-century pottery from London (Vince & Jenner 1991 #9923). It is likely, therefore, that at least some of these sherds are of 12th-century date but the possibility that some pre-date the conquest should be born in mind (especially considering the C14 date from 49/5 which centres on the early 11th century, 20 – Poz-1536).

Table 1

Sitecode	EMSH	SNLOC	Grand Total
27/3	1		1
47/2		1	1
49/5		27	27
Grand Total	1	28	29

Very little is known of pottery of this period in the south-east outside of London and Canterbury and study of these sherds would add to knowledge (see **Costings**, below). For example, the fabric looks remarkably similar to EMSH, one of the shell-tempered wares found in the City of London. However, that ware was thought to have been made from Woolwich Beds shelly clays. The nearest source of such clays is probably about 30-40 miles to the north of the pipeline, which is about twice the average maximum distance over which pottery was transported overland during this period.

Medieval

Six hundred and four sherds of pottery datable between the later 12th century and the 15th century were found. The majority of these sherds came from two sites: 46/2 and 49/5 (Table 2) with other sites producing between 1 and 3 sherds each.

The pottery was divided into five groups: EMLOC – vessels tempered with a variable mixture of quartz sand and shell fragments. The quartz grains are a mixture of haematite-coated subangular grains up to 0.5mm across and polished, rounded grains up to 2.0mm across. The latter originated in the Greensand but are also common in Quaternary and later detrital sands throughout the southeast; LIMP – vessels tempered with a fine quartz sand, similar to that in EMLOC; MEDLOC – vessels with a light-coloured body and sparse quartz sand tempering; MEDX – a single sherd with an oxidized calcareous body.

The EMLOC vessels are mainly jars with flat-topped rims and may include wheelthrown or wheel-finished examples. They also include bowls with flat-topped rims. The LIMP vessels include both jars and unglazed jugs. The handles, which are either straps or oval-sectioned, are usually decorated with slashed lines or stabbed dots about 1mm in diameter. At least some of this material is likely to be from the Limpsfield area.

The MEDLOC vessels are mainly glazed wheelthrown jugs. Many of these were decorated with applied strips, stamping and combing. Several sherds retained their copper-stained green glaze. Comparison with Surrey whitewares and London-type wares suggests that the majority of these vessels date to the 13th and early 14th centuries.

It is likely that the sequence of Saxo-Norman and medieval wares is as shown in Fig 1:

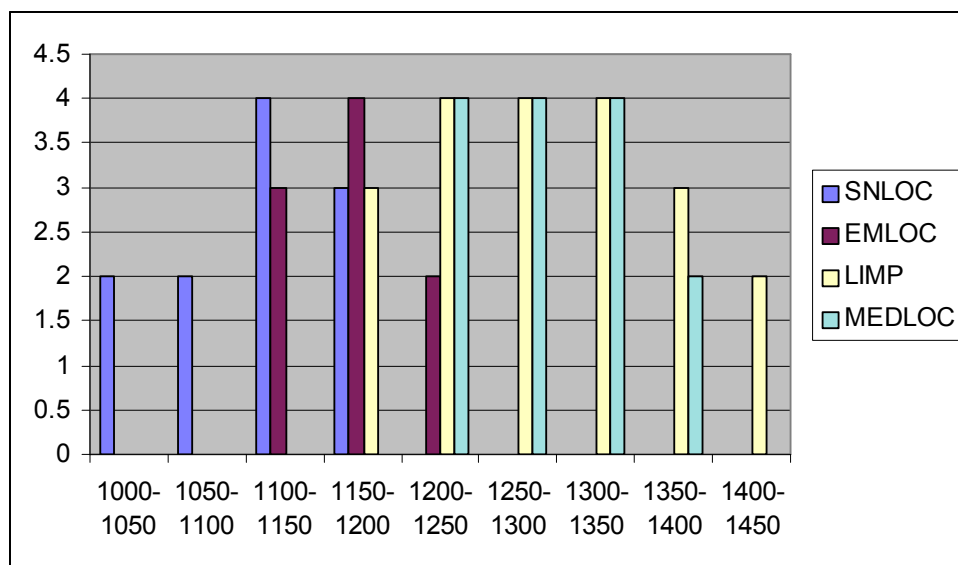


Figure 1. Hypothetical sequence of Saxo-Norman and medieval wares. Key: 2 = possibly current, 3 = likely to be current, 4 = definitely current

Table 2

Sitecode	EMLOC	LIMP	LIMP?	MEDLOC	MEDX	Grand Total
26/1	2					2
26/3					1	1
27/3		2				2
29/4					1	1
35/1					2	2
40/1					1	1
41/5					1	1
46/2	314	100		41		455
47/2		2				2
48/4					1	1
49/5	115	13	1			129
53/1					1	1
57/1					2	2
57/3		2			1	3
58/1					1	1
Grand Total	431	119	1	52	1	604

It seems that the same sources supplied all of the sites investigated on the pipeline and the similarity of the EMLOC and LIMP sands suggests that the EMLOC may be an earlier product of the Limpsfield potteries. This could easily be tested by scientific analysis. The MEDLOC vessels, however, are clearly made from a different clay and may have been imported to the area. Visually, they are similar to vessels produced at Maidstone and different from wares produced at Rye, Earlswood and (in the main) Tyler Hill (Canterbury). Thin-sections and chemical analyses of the Maidstone and Tyler Hill wares are

present in the AVAC reference collection and it would therefore be possible to compare them with MEDLOC.

Late and post-medieval

Fifty-one sherds of later medieval and early post-medieval pottery were recovered (Table 3). In the main they occur in ones and twos and are clearly simply a random background scatter. At one site, 58/1, eight sherds were recovered and these include imported stonewares and non-local finewares which suggest a late 15th-early 16th-century date for the collection. It is likely, in fact, that this is the date of the entire 51 sherds, in which case either LIMP and MEDLOC continued to be used into the 15th century or we lack any pottery of this period.

The pottery was divided into five groups: LMLOC – an oxidized, fine-textured fabric containing some sparse voids; RAER – Raeren stoneware; CSTN – Cistercian ware; KOLN – Cologne stoneware and FREC – Frechen stoneware. The incidence of these imported stonewares contrasts strongly with the earlier medieval pattern. They occur on 6 of the 27 sites which produced pottery of this period (Table 3) and suggest an increased openness of the area to long-distance trade (imports were present in towns and coastal sites in the southeast in the earlier medieval period but were clearly not being traded inland to sites in the vicinity of the pipeline.

Table 3

Sitecode	LMLOC	LMLOC/PMLOC	RAER	CSTN	KOLN	FREC	Total
25/1				1			1
27/3	1						1
29/3	1						1
40/1	1		1				2
41/6			2				2
43/3	1						1
44/3				1		1	2
45/7			1				1
47/1						1	1
47/4	2						2
48/4	1						1
48/5	1						1
49/11	1						1
49/3	1						1
50/1	2						2
51/3	3						3
54/2	2						2
54/6				1			1
54/7	2						2

54/9	1					1	2
56/2	1						1
56/8	2						2
57/3	4						4
57/4	4						4
58/1	5			1	1	1	8
58/3	2						2
Grand Total	38		4	3	2	1	51

It is likely that the LMLOC vessels are the products of a single kiln site. Their appearance is similar to late 15th and early 16th-century ‘Tudor Brown’ wares from Surrey and the lower Thames valley and their fabric sounds similar to those of Hareplain and Lower Parrock wares, both of which were produced in the early 16th century ({Kelly 1972 #44743}; {Freke 1979 #44753}).

One hundred and six sherds of later post-medieval pottery were recovered from the pipeline (Table 4). The majority of these were similar in fabric to LMLOC but, unlike that ware, were either glazed or coated with brown slip. In fact, the Hareplain excavations show that glaze was used, sparingly at that site and therefore this split is only approximately chronological. In addition, a range of non-local England and imported wares were present. These are ubiquitous on sites throughout England and indicate the industrialisation of pottery supply during the 17th and 18th centuries. Seventy-two sherds have a probable local origin compared with 28 from other parts of England and six imports (from China – CHPO - and the middle Rhine valley – WEST). Within the non-local wares London, unsurprisingly, has a major role (9 sherds compared with 2 definitely from Staffordshire and one definitely from Nottingham). However, 16 of the sherds are factory-made vessels in refined clays which were produced at several sites (although Staffordshire is likely to have been one of the major sources).

Table 4

Sitecode	CHPO	ENGS	ENPO	GRE	LONS	LPMLC	NOTS	PMLOC	PMR	REFR	STMO	SWSG	TGW	WEST	Grand Total
25/1	1			1	1		1								4
26/1										1					1
27/1					1			1							2
29/3								3							3
29/5								1							1
30/4								1							1
30/5								2							2
32/7								2							2
33/1								1							1

35/2	1						4							5	
39/2							1							1	
40/1	2									2				4	
43/4							9		1					10	
44/3							1							1	
45/1		1		1			2		1					5	
45/2							1							1	
45/3		1					1							2	
47/1							3				2			5	
47/5												1		1	
48/1		1	2											3	
48/2						1			1					2	
48/3		1												1	
49/1		1			1									2	
51/4							1							1	
52/2							1							1	
52/3							1							1	
54/10		1					7							8	
54/6							4							4	
54/7							1							1	
54/8							1							1	
54/9								1						1	
56/1							1			2	1			4	
56/2		1					4							5	
56/6							1							1	
56/7							1							1	
57/3		1			1		1							3	
57/4							3							3	
58/1							9							9	
58/2							1							1	
58/3							1							1	
Grand Total	5	7	2	1	5	1	1	71	1	2	2	4	3	1	106

Early Modern

One hundred and sixty sherds of late 18th, 19th- and 20th-century pottery were recovered (Table 5). All of these wares are factory-produced wares. They include kitchen wares (NCBW and SUND) as well as stoneware containers (DERBS) but are mainly tablewares (BLUE, CONP, CREA, PEAR, TPW, WHITE and YELLOW). The lack of any contemporary locally-produced country pottery is striking.

The quantity of pottery per site is higher than for previous periods, but whether this really indicates an intensification of activity rather than an increase in the range and quantity of pottery in use is to be doubted.

Table 5

Sitecode	BLUE	CONP	CREA	DERBS	NCBW	PEAR	SUND	TPW	WHITE	YELLOW	Total
25/1						1		8			9
26/1								3			3
29/2								9			9
30/4			1		1						2
31/1								1			1
32/1								1			1
32/2								2			2
33/1								1			1
35/1								1			1
35/2								2			2
39/2		1	1					1			3
39/4			1								1
39/5								1			1
40/1			6					7			13
41/6								2			2
43/1	1		1								2
43/4			1					1			2
44/1						2		1			3
44/2								2			2
44/3					1	1		1			3
45/1			1	1		1		2	1		6
45/2			1			1					2
45/3				1		2		3			6
45/7								1			1
46/3								1			1
47/1			7			2		3			12
47/2								1			1
48/1			1					6	1		8
48/2								3			3
48/4							1	3			4
48/6		1				1		1			3

48/7			2		2		4
49/8					1		1
51/3					2		2
52/1					1		1
52/2					1		1
52/3					1		1
53/1					1		1
54/10		1			2	2	5
54/4					1		1
54/6			1		1	1	3
54/7				1			1
54/9					1		1
56/1					1		1
56/4					1		1
56/8					1		1
57/2					3	1	4
57/3			1		4		5
58/1				1			1
58/2		1			1		2
58/3	1		1		9	2	13
Grand Total	1	3	23	3	3	15	2 102 7 1 160

Assessment

Stratigraphic assessment

Excavated features

Six hundred and nineteen sherds of medieval or later pottery were recovered from archaeological features. They come in the main from 46/2 and 49/5 with minor quantities from sites 29/3, 43/4 and 47/2 (Table 6).

Table 6

Sitecode	1000	1150	1550	Grand Total
29/3			1	1
43/4			7	7
46/2		453		453
47/2	1	2		3
49/5	26	129		155
Grand Total	27	584	8	619

At site 46/2 post-Roman pottery was recovered from 14 contexts (Table 7). There is no indication that any of these contexts differ widely in date and most contain a mixture of EWMLOC, LIMP and MEDLOC. It is likely that the site was occupied over a short period of time (ie 50-100 years maximum) during the 13th or early 14th centuries.

Table 7

Newcont	EMLOC	LIMP	MEDLOC	RPOT/OLIV	Grand Total
46018	81	67	24		172
46035	67	9	2		78
46024	63	6		1	70
46040	35	7	6		48
46006	26	6	1		33
46025	16	2			18
46027	8		3		11
46026	7	1	2		10
46017	5		2		7
46028	3		1		4
6339	1				1
46029	1				1
46032	1	1			2
6314		1			1
Grand Total	314	100	41	1	456

Site 49/5 produced 156 sherds of post-Roman pottery (Table 8). The pottery comes from 12 contexts and, as at site 42/6, there is little evidence for these differing widely in date. The SNLOC sherds occur consistently with LIMP sherds. However, the only definite LIMP jug sherds come from a context which did not produce other wares (49044). Assuming that the assemblages consist of contemporary material without any residuality then this site would have been occupied during the mid/late 12th century since this is the only period at which both the handmade shelly wares and jugs of Limpsfield type would have been in contemporary use.

Table 8

newcont	SNLOC	EMLOC	LIMP	LIMP?	Grand Total
6180	1				1
49022			8		8
49025			3		3
49027	1		10	2	13
49028			1		1
49029	10		77	4	92
49032			2		2

49035			8		8
49038	3		3	2	8
49039	5		3	1	9
49041	7				7
49044				4	4
Grand Total	27	115	13	1	156

Pottery from the watching brief

Three hundred and thirty one sherds of pottery were recovered from the watching brief (Table 9). In Table 9 these sherds are grouped by their earliest possible dates (*tpqs*). Reading this table is liable to be misleading unless it is realised that certain wares have a long period of use (for example LIMP) and given that these are unstratified collections it is not possible to use the presence of other wares which can be more closely dated as a guide to dating the broadly-dated wares. Even a casual glance at the table, however, shows that on most sites there is a wide spread of material. It is clear, however, that there is an increase in the number of sites with pottery of late/early post-medieval date in comparison with earlier medieval and a further increase in the number of sites producing early modern pottery (late 18th century and later).

Table 9

Sitecode	1000	1150	1350	1450	1500	1530	1550	1600	1620	1640	1670	1690	1700	1730	1750	1765	1770	1800	1850	Grand Total
25/1					2				1		1	1						9		14
26/1		2												1				3		6
26/3		1																		1
27/1							1				1									2
27/3	1	2	1																	4
29/2																		9		9
29/3				1				2												3
29/4		1																		1
29/5								1												1
30/4								1								1		1		3
30/5								2												2
31/1																		1		1
32/1																		1		1
32/2																		2		2
32/7								2												2
33/1								1										1		2
35/1		2																1		3
35/2								4	1									2		7
39/2								1								1	2			4
39/4																1				1
39/5																		1		1
40/1		1	2						2				2			6	7			20
41/5		1																		1
41/6			2															2		4

AVAC Report 2003/20

43/1									1		1	2		
43/3	1											1		
43/4			2			1			1	1		5		
44/1										3		3		
44/2										2		2		
44/3		1	1	1						2	1	6		
45/1			2			1	1		1	1	3	1	1	11
45/2			1							1	1			3
45/3			1						1		5	1		8
45/7	1									1				2
46/2	2													2
46/3											1			1
47/1			1	3		2				7	5			18
47/2											1			1
47/4	2													2
47/5				1										1
48/1						2			1	1	6		1	11
48/2								1	1		3			5
48/3									1					1
48/4	1	1									3	1		6
48/5	1													1
48/6											3			3
48/7											4			4
49/1						1			1					2
49/11	1													1
49/3	1													1
49/5	1													1
49/8											1			1
50/1	2													2
51/3	3										2			5
51/4				1										1
52/1											1			1
52/2				1							1			2
52/3				1							1			2
53/1	1										1			2
54/10				7	1					1	2		2	13
54/2	2													2
54/4											1			1
54/6		1		4							2		1	8
54/7	2			1								1		4
54/8				1										1
54/9	1		1		1						1			4
56/1				1		1		2			1			5
56/2	1			4						1				6
56/4											1			1

56/6							1												1		
56/7							1												1		
56/8		2													1				3		
57/1		2																	2		
57/2															3		1		4		
57/3		3	4				1		1				1		4	1			15		
57/4			4				3												7		
58/1		1	5	1	2		9								1				19		
58/2							1						1	1					3		
58/3			2				1								10	1	2		16		
Grand Total		2	20	42	3	4	3	63	2	5	3	5	3	6	2	8	23	120	8	9	331

Costings

The medieval pottery from the excavated sites forms useful groups whose publication would further knowledge of pottery use in this area (Tasks 1 to 7). Characterisation of the late medieval and post-medieval locally-produced wares is of less urgency although this too would be valuable in either confirming that the same raw materials were used throughout the period or demonstrating that there are differences in source, which might be useful for refining the dates of these wares (Tasks 8 and 9).

ID	Task	Hourly rate or unit cost	Hours/quantity	Amount
1	Illustration of Saxo-Norman vessels	£14.50	6	£87.00
2	Thin-section analysis of Saxo-Norman vessels	£21	6	£126.00
3	Chemical analysis of Saxo-Norman vessels	£21	6	£126.00
4	Illustration of Medieval vessels	£14.50	15	£217.50
5	Thin-section analysis of medieval vessels	£21	18	£378.00
6	Chemical analysis of medieval vessels	£21	18	£378.00
7	Report	£21	8	£168.00
Subtotal	Stratified medieval pottery			£1,480.50
8	Thin-section analysis of Late and post-medieval local wares	£21	12	£252.00
9	Chemical analysis of late and post-medieval local wares	£21	12	£252.00
Subtotal	Unstratified local coarsewares			£504.00
Grand Total				£1984.50

Appendix

Sitecode	context	cname	subfabric	Form	Nosh	NoV	Action	Description	Part	earliest date	latest date
25/1	6420	CHPO		PLATE	1	1			BS	1620	1900
25/1	6420	CSTN		CUP	1	1			BS	1500	1650
25/1	6420	GRE	FINE TEXTURED FABRIC	BOWL	1	1			BS	1600	1750
25/1	6420	LONS		SJ	1	1			BS	1670	1800
25/1	6420	NOTS		BOWL	1	1	RSD		BS	1690	1900
25/1	6420	PEAR		BOWL	1	1	HAND PAINTED		BS	1770	1900
25/1	6420	TPW		CUP	3	3			BS	1770	1900
25/1	6420	TPW		DISH	1	1			BS	1770	1900
25/1	6420	TPW			4	4			BS	1770	1900
25/1	6420	ZDATE			1	1	19th C		BS	0	0
26/1	6024	EMLOC	SHELL AND QUARTZ SAND	JAR	2	1			BS	1150	1250
26/1	6243	EMLOC	SHELL AND QUARTZ SAND	JAR	2	1			BS	1150	1250
26/1	6248	REFR		TPOT	1	1	BLACK GLAZE		B	1730	1800
26/1	6248	TPW		TANK	1	1			BS	1770	1900
26/1	6248	TPW		PLATE	2	2			B	1770	1900
26/3	6005	MEDLOC	FINE SAND	JAR?	1	1			BS	1150	1350
27/1	6007	LONS		SJ	1	1			H	1670	1800
27/1	6008	PMLOC		FLP	1	1			R	1550	1750
27/3	6265	EMSH		JAR	1	1	HANDMADE? EVERTED RIM		R	1000	1150
27/3	6266	LIMP		JUG	1	1	UNDECORATED OVAL-SECTIONED HANDLE;PUSHED		H	1150	1250

Sitecode	context	cname	subfabric	Form	Nosh	NoV	Action	Description	Part	earliest date	latest date
								THROUGH BODY WALL			
27/3	6266	LIMP		JUG	1	1		STRAP HANDLE WITH RANDOM STABBED HOLES	H	1150	1250
27/3	6266	LMLOC		JUG/JAR	1	1			BS	1350	1500
29/2	6242	TPW		PLATE	4	4			BS	1770	1900
29/2	6244	TPW		CLSD	1	1			BS	1770	1900
29/2	6244	TPW		PLATE	1	1			BS	1770	1900
29/2	6245	TPW		CLSD	1	1			BS	1770	1900
29/2	6245	TPW		DISH	1	1			R	1770	1900
29/2	6245	TPW		DISH	1	1			R	1770	1900
29/3	6255	PMLOC		BOWL	1	1		18TH/19TH C	BS	1550	1750
29/3	6256	LMLOC	INCLUSIONLESS	JAR/JUG	1	1		BLACK SURFACES;OXID BODY	BS	1350	1500
29/3	6266	PMLOC		BOWL	1	1			BS	1550	1750
29/3	29050	PMLOC		BOWL	1	1		16TH/18TH C	B	1550	1750
29/4	6329	MEDLOC	LOW IRON, SANDY,FE SPECKS IN REDUCED GREEN GL	JUG	1	1			BS	1150	1350
29/5	6332	PMLOC		JAR	1	1		RSD BAND ON SHOULDER;INTERNAL PLAIN GL	R	1550	1750
30/4	6269	CREA		PLATE	1	1		OVER-GLAZE PAINTED	BS	1765	1830
30/4	6269	NCBW		BOWL	1	1			R	1800	1900
30/4	6269	PMLOC		JAR	1	1			BS	1550	1750
30/5	6270	PMLOC		BOWL	1	1		THICK INTERNAL WHITE SLIP	BS	1550	1750

Sitecode	context	cname	subfabric	Form	Nosh	NoV	Action	Description	Part	earliest date	latest date
								AND ALMOST COLOURLESS GLASS;CF SUND			
30/5	6270	PMLOC		JAR	1	1			BS	1550	1750
31/1	6271	TPW		DISH	1	1		PROBABLY THE BASE OF A LARGE FLAT FORM	BS	1770	1900
31/1	6272	RPOT			1	1			BS	40	400
32/1	6274	TPW		PLATE	3	1			BS	1770	1900
32/2	6275	TPW		CUP	1	1			BS	1770	1900
32/2	6275	TPW		PLATE	1	1			BS	1770	1900
32/7	6276	PMLOC		BOWL	1	1			B	1550	1750
32/7	6278	PMLOC		JUG/JAR	1	1		REDUCED SURFACE, UNGLAZED REDWARE	BS	1550	1750
33/1	6279	PMLOC		JAR	1	1		GLAZED INT AND EXT;RSD EXT	BS	1550	1750
33/1	6279	TPW		TPOT	1	1			BS	1770	1900
35/1	6286	MEDLOC		JUG	1	1		CF TYLER HILL	B	1150	1350
35/1	6287	MEDLOC		JUG	1	1		CF LIMP	BS	1150	1350
35/1	6292	TPW		PLATE	1	1			R	1770	1900
35/2	6281	PMLOC		BOWL	2	2			BS	1550	1750
35/2	6282	CHPO		BOWL	1	1		LARGE VESSEL	R	1620	1900
35/2	6283	PMLOC		BOWL	1	1			BS	1550	1750
35/2	6289	TPW		PLATE	1	1			R	1770	1900
35/2	6290	PMLOC		FLP	1	1			BS	1550	1750
35/2	6291	TPW		CUP	1	1			BS	1770	1900

Sitecode	context	cname	subfabric	Form	Nosh	NoV	Action	Description	Part	earliest date	latest date
39/2	6046	CONP		CUP	1	1			B	1770	1900
39/2	6046	CREA		EGG	1	1		PRODUCED IN TWO MOULDS AND LUTED TOGETHER	BS	1765	1830
39/2	6046	TPW		PLATE	1	1			BS	1770	1900
39/2	6158	PMLOC		JUG/JAR	1	1		OXIDIZED	B	1550	1750
39/4	6051	CREA		CUP	1	1		BLACK TRANSFER EXT	R	1765	1830
39/5	6045	TPW		PLATE	1	1		BROWN TRANSFER	BS	1770	1900
40/1	6043	CHPO		CUP	1	1			BS	1620	1900
40/1	6043	CHPO		DISH	1	1			BS	1620	1900
40/1	6043	CREA		BOWL	1	1			BS	1765	1830
40/1	6043	CREA		TANK	1	1		OVERGLAZE PAINTING	BS	1765	1830
40/1	6043	CREA		BOWL	1	1			R	1765	1830
40/1	6043	CREA		PLATE	3	3			BS	1765	1830
40/1	6043	LMLOC	SANDY	JAR	1	1			BS	1350	1500
40/1	6043	LMLOC/PMLOC		JUG/JAR	1	1			BS	1350	1750
40/1	6043	SWSG		TANK	1	1			BS	1700	1770
40/1	6043	SWSG		BOWL	1	1			BS	1700	1770
40/1	6043	TPW		PLATE	1	1			BS	1770	1900
40/1	6043	TPW		BOWL	2	2			BS	1770	1900
40/1	6043	TPW		BOWL	1	1		BLUE TRANSFER? WITH OG BLACK OUTLINING	BS	1770	1900
40/1	6043	TPW			1	1			BS	1770	1900
40/1	6043	TPW		CLSD	1	1			BS	1770	1900

Sitecode	context	cname	subfabric	Form	Nosh	NoV	Action	Description	Part	earliest date	latest date
40/1	6043	TPW			1	1			H	1770	1900
40/1	6297	MEDLOC	SANDY	JUG	1	1			BS	1150	1350
41/5	6299	MEDLOC	LOW IRON, FINE SAND	JUG	1	1		STRAP HANDLE PUSHED THROUGH BODY, PLAIN SPLASH GLAZE	H	1150	1350
41/6	6047	LMLOC/PMLOC	INCLUSIONLESS OXIDIZED	JAR	1	1			R	1350	1750
41/6	6049	LMLOC/PMLOC		JAR	1	1			BS	1350	1750
41/6	6049	TPW		DISH	1	1			BS	1770	1900
41/6	6301	TPW		PLATE	1	1			BS	1770	1900
43/1	6050	BLUE		TPOT?	1	1		MOULDED FLORAL PATTERN	BS	1850	1950
43/1	6054	CREA		BOWL	1	1			R	1765	1830
43/3	6323	LMLOC		JAR/BOWL	1	1		VABR;BURNING AROUND BASE	B	1350	1500
43/4	6302	CREA			1	1			BS	1765	1830
43/4	6302	PMLOC		BOWL	1	1			BS	1550	1750
43/4	6302	PMLOC		BOWL	1	1			R	1550	1750
43/4	6302	STMO		LID	1	1			BS	1690	1800
43/4	6302	TPW		PLATE	1	1			R	1770	1900
43/4	43100	PMLOC		JAR	1	1			BS	1550	1750
43/4	43105	PMLOC		JAR	2	2			BS	1550	1750
43/4	43107	PMLOC		JAR	1	1		SPLASHES OF BROWN PAINT EXT	BS	1550	1750
43/4	43112	PMLOC		JAR	1	1			BS	1550	1750

Sitecode	context	cname	subfabric	Form	Nosh	NoV	Action	Description	Part	earliest date	latest date
43/4	43114	PMLOC		JAR	1	1			B	1550	1750
43/4	43116	PMLOC		JAR	1	1			BS	1550	1750
44/1	6055	PEAR		BOWL	2	2			BS	1770	1900
44/1	6055	TPW		CLSD	1	1			BS	1770	1900
44/2	6056	TPW		CLSD	1	1			BS	1770	1900
44/2	6056	TPW		CUP	1	1			BS	1770	1900
44/3	6059	TPW		DISH	1	1			R	1770	1900
44/3	6060	FREC		SJ	1	1			BS	1530	1680
44/3	6062	PMLOC		BOWL	1	1		INT WHITE SLIP AND PLAIN GLAZE	BS	1550	1750
44/3	6063	NCBW		CLSD	1	1		MOULDED	BS	1800	1900
44/3	6063	PEAR		PLATE	1	1		MOULDED	BS	1770	1900
44/3	6063	RAER		DJ	1	1			BS	1450	1600
45/1	6064	PMLOC		JAR	1	1		GLAZED INT AND EXT;RSD EXT	BS	1550	1750
45/1	6064	STMO		TANK	1	1			BS	1690	1800
45/1	6066	DERBS		LID	1	1			BS	1800	1950
45/1	6066	ENGS		BOT	1	1		BRISTOL GLAZED INT	BS	1750	1900
45/1	6066	TPW		PLATE	1	1			B	1770	1900
45/1	6066	TPW		CLSD	1	1			BS	1770	1900
45/1	6067	PMLOC		JAR/FLP	1	1		EXT BROWN SLIP	BS	1550	1750
45/1	6068	CREA		DISH	1	1			BS	1765	1830
45/1	6068	LONS		SJ	1	1			BS	1670	1800

Sitecode	context	cname	subfabric	Form	Nosh	NoV	Action	Description	Part	earliest date	latest date
45/1	6068	PEAR		JUG	1	1		LIGHT BLUE SLIP BAND AT BASE	B	1770	1900
45/1	6068	WHITE		CUP	2	1			BS	1850	1900
45/2	6069	CREA		PLATE	1	1			BS	1765	1830
45/2	6070	PMLOC		BOWL	1	1		INT GL	BS	1550	1750
45/2	6073	PEAR		BOWL	1	1		HANDPAINTED	BS	1770	1900
45/3	6072	ENGS	GREY INCLUSIONLESS	JAR	1	1		FLUTED MARMALADE JAR	BS	1750	1900
45/3	6075	DERBS		INKW	1	1			B	1800	1950
45/3	6075	PEAR		CUP	1	1			BS	1770	1900
45/3	6089	PEAR		DISH	1	1			BS	1770	1900
45/3	6089	TPW		PLATE	3	1			BS	1770	1900
45/3	6089	TPW		CUP	1	1			BS	1770	1900
45/3	6089	TPW		PLATE	1	1			BS	1770	1900
45/3	6171	PMLOC		FLP	1	1		CENTRAL HOLE;UNGLAZED	B	1550	1750
45/7	6079	TPW		PLATE	1	1			BS	1770	1900
45/7	6080	LMLOC/PMLOC		JAR	1	1		UNGLAZED;BLACK EXT SURFACE;OXID BODY	BS	1350	1750
46/2	6314	LIMP		JUG	1	1		STRAP HANDLE;SLASHED	H	1150	1250
46/2	6339	EMLOC	SHELL/QUARTZ SAND	JAR	1	1			B	1150	1250
46/2	46006	EMLOC	SHELL/QUARTZ SAND	JAR	8	8			BS	1150	1250
46/2	46006	EMLOC	SHELL/QUARTZ SAND	JAR	9	9		SOOTED EXT	BS	1150	1250
46/2	46006	EMLOC	SHELL/QUARTZ SAND	JAR	1	1		VERT THUMBED APP	BS	1150	1250
46/2	46006	EMLOC	SHELL/QUARTZ SAND	JAR	5	5			BS	1150	1250

Sitecode	context	cname	subfabric	Form	Nosh	NoV	Action	Description	Part	earliest date	latest date
46/2	46006	EMLOC	SHELL/QUARTZ SAND	CURF	1	1		CURVED APP ON 'BASE';OXID;WORN/SPALLED INT	BS	1150	1250
46/2	46006	EMLOC	SHELL/QUARTZ SAND	JAR	1	1		THICK WALLED	BS	1150	1250
46/2	46006	EMLOC	SHELL/QUARTZ SAND	JAR	1	1		FLAT-TOPPED CF SSW	R	1150	1250
46/2	46006	LIMP			2	2			B	1150	1250
46/2	46006	LIMP			3	3			BS	1150	1250
46/2	46006	LIMP			1	1		HORIZ COMBING	BS	1150	1250
46/2	46006	MEDLOC	LOWISH IRON FINE SAND	JUG	2	1		SPLASH GLAZED	BS	1150	1350
46/2	46017	EMLOC	SHELL/QUARTZ SAND	JAR	5	5			BS	1150	1250
46/2	46017	MEDLOC	LIGHT BODIED SANDY	JUG	1	1		CORDON	BS	1150	1350
46/2	46017	MEDLOC	LIGHT BODIED SANDY	JUG	1	1		STAMPED BOSSES	BS	1150	1350
46/2	46017	ZDATE			1	1		L13TH/15TH	BS	0	0
46/2	46018	EMLOC	SHELL/QUARTZ SAND	JAR	9	4			B	1150	1250
46/2	46018	EMLOC	SHELL/QUARTZ SAND	DISH	1	1		SOOTED EXT	R	1150	1250
46/2	46018	EMLOC	SHELL/QUARTZ SAND		1	1		UNKNOWN VESSEL FORM	R	1150	1250
46/2	46018	EMLOC	SHELL/QUARTZ SAND	JAR	1	1		APPLIED THUMBED STRIP; FLAT-TOPPED RIM	R	1150	1250
46/2	46018	EMLOC	SHELL/QUARTZ SAND	JAR	5	3		FLAT-TOPPED RIM	R	1150	1250
46/2	46018	EMLOC	SHELL/QUARTZ SAND	JAR	3	3			BS	1150	1250
46/2	46018	EMLOC	SHELL/QUARTZ SAND	JAR	51	51		SOOTED	BS	1150	1250
46/2	46018	EMLOC	SHELL/QUARTZ SAND	JAR	16	16			BS	1150	1250
46/2	46018	EMLOC	SHELL/QUARTZ SAND	JAR	1	1		APPLIED THUMBED STRIP	BS	1150	1250

Sitecode	context	cname	subfabric	Form	Nosh	NoV	Action	Description	Part	earliest date	latest date
46/2	46018	LIMP		JUG	1	1		ROD WITH CENTRAL SLASH;EARS AT R/H JOIN	H	1150	1250
46/2	46018	LIMP			44	44			BS	1150	1250
46/2	46018	LIMP		JUG	1	1		SAGGING	B	1150	1250
46/2	46018	LIMP		JUG	19	4		WAVY COMBING	BS	1150	1250
46/2	46018	LIMP		JUG	1	1			BS	1150	1250
46/2	46018	LIMP		JUG	11	1			BS	1150	1250
46/2	46018	LIMP		JUG	4	4		CROSS-HATCHED LINEAR DECBS		1150	1250
46/2	46018	LIMP		JUG	11	11			BS	1150	1250
46/2	46018	MEDLOC	LOWISH IRON SANDY	JUG	6	6			BS	1150	1350
46/2	46018	MEDLOC	LOWISH IRON SANDY	JUG	11	11			BS	1150	1350
46/2	46018	MEDLOC	LOWISH IRON SANDY	JUG	3	3			BS	1150	1350
46/2	46018	MEDLOC	LOWISH IRON SANDY	JUG	1	1		COMBED LINE	BS	1150	1350
46/2	46018	MEDLOC	LOWISH IRON SANDY	JUG	3	1		CUGL NFR STYLE	BS	1150	1350
46/2	46018	MEDLOC	LOWISH IRON SANDY	JUG	1	1		STAMPED BOSS	BS	1150	1350
46/2	46018	MEDLOC	LOWISH IRON SANDY	JUG	1	1		STRAP WITH TWO LINES OF NAIL HOLES	H	1150	1350
46/2	46024	EMLOC	SHELL/QUARTZ SAND	JAR	7	7			BS	1150	1250
46/2	46024	EMLOC	SHELL/QUARTZ SAND	JAR	5	5		SOOTED EXT	BS	1150	1250
46/2	46024	EMLOC	SHELL/QUARTZ SAND	JAR	6	6		SOOTED EXT;THUMBED VERT APP	BS	1150	1250
46/2	46024	EMLOC	SHELL/QUARTZ SAND	JAR	3	3		FLAT-TOPPED CF SSW	R	1150	1250
46/2	46024	EMLOC	SHELL/QUARTZ SAND	JAR	27	27			BS	1150	1250

Sitecode	context	cname	subfabric	Form	Nosh	NoV	Action	Description	Part	earliest date	latest date
46/2	46024	EMLOC	SHELL/QUARTZ SAND	JAR	2	2			B	1150	1250
46/2	46024	EMLOC	SHELL/QUARTZ SAND	JAR	13	13		SOOTED EXT	BS	1150	1250
46/2	46024	LIMP	SOME SHELL		2	1		HORIZ AND WAVY COMBING	BS	1150	1250
46/2	46024	LIMP			2	1		HORIZ COMBING	BS	1150	1250
46/2	46024	LIMP		JUG	2	1		OVAL HANDLE	H	1150	1250
46/2	46024	LIMP			3	3			BS	1150	1250
46/2	46024	RPOT/OLIV	DEFINITE GUADALQUIVIR FABRIC	AMPH	1	1			BS	40	1750
46/2	46025	EMLOC		JAR	9	9			BS	1150	1250
46/2	46025	EMLOC		CURF	1	1		HEAVY APPLIED STRIP ON THICK WALLED BODY SHERD	BS	1150	1250
46/2	46025	EMLOC		JAR	1	1			B	1150	1250
46/2	46025	EMLOC		JAR	1	1		SOOTED EXT	B	1150	1250
46/2	46025	EMLOC		JAR	1	1		FLAT-TOPPED CF SSW	R	1150	1250
46/2	46025	EMLOC		JAR	2	2		SOOTED EXT	BS	1150	1250
46/2	46025	EMLOC		JAR	1	1		FLAT-TOPPED CF SSW;SOOTED	R	1150	1250
46/2	46025	LIMP			1	1		COMBED	BS	1150	1250
46/2	46025	LIMP		JUG	1	1			R	1150	1250
46/2	46026	EMLOC		JAR	1	1		FLAT-TOPPED CF SSW	R	1150	1250
46/2	46026	EMLOC		JAR	6	6			BS	1150	1250
46/2	46026	LIMP		JUG	1	1		HORIZ COMBED	BS	1150	1250
46/2	46026	MEDLOC	VARIAGATED	JUG	12	1		APPLIED PADS WITH RING	BS	1150	1350

Sitecode	context	cname	subfabric	Form	Nosh	NoV	Action	Description	Part	earliest date	latest date
			CLAY;QUARTZ SAND					STAMPS;APPLIED CLAY STRIP AROUND B/H JOIN;CUGL			
			VARIAGATED CLAY;QUARTZ SAND								
46/2	46026	MEDLOC			1	1		VERY ABRADED SHERD	BS	1150	1350
46/2	46027	EMLOC	SHELL/QUARTZ SAND	JAR	2	1		FLAT-TOPPED CF SSW	R	1150	1250
46/2	46027	EMLOC	SHELL/QUARTZ SAND	JAR	5	1		FLAT-TOPPED CF SSW	R	1150	1250
46/2	46027	EMLOC	SHELL/QUARTZ SAND	JAR	5	5		SOOTED EXT	BS	1150	1250
46/2	46027	EMLOC	SHELL/QUARTZ SAND		6	1		THICK-WALLED	BS	1150	1250
			LOWISH IRON;QURTZ SAND	JUG	23	1		PLAIN SAGGING BAS;CLEAR EXT GLAZE MOSTLY SPALLED OFF	B	1150	1350
			LOWISH IRON;QURTZ SAND;BLACK SHALE PELLETS	JUG	1	1		STRAP HANDLE WITH VERTICAL SLASHES DOWN BACK AND NICKS ALONG EDGES	BS	1150	1350
46/2	46027	MEDLOC		JUG	1	1		VERT WHITE TRIAPP	BS	1150	1350
46/2	46028	EMLOC	SHELL/QUARTZ SAND	JAR	2	2			BS	1150	1250
46/2	46028	EMLOC	SHELL/QUARTZ SAND	JAR	1	1		SOOTED	B	1150	1250
			LOWISH IRON;QUARTZ SAND	JUG	1	1		CURVILINEAR COMBING;CUGL	BS	1150	1350
46/2	46029	EMLOC	SHELL/QUARTZ SAND	JAR	1	1			BS	1150	1250
46/2	46032	EMLOC		JAR	1	1			BS	1150	1250
46/2	46032	LIMP			1	1			BS	1150	1250
46/2	46035	EMLOC	SHELL/QUARTZ SAND	JAR	2	1			B	1150	1250

Sitecode	context	cname	subfabric	Form	Nosh	NoV	Action	Description	Part	earliest date	latest date
46/2	46035	EMLOC	SHELL/QUARTZ SAND	JAR	6	6		FLAT-TOPPED RIMS CF SSW	R	1150	1250
46/2	46035	EMLOC	SHELL/QUARTZ SAND	JAR	48	48			BS	1150	1250
46/2	46035	EMLOC	SHELL/QUARTZ SAND	JAR	2	2			BS	1150	1250
46/2	46035	EMLOC	SHELL/QUARTZ SAND	JAR	10	10			BS	1150	1250
46/2	46035	LIMP		JUG	8	4			BS	1150	1250
46/2	46035	LIMP			1	1			BS	1150	1250
46/2	46035	LIMP		JUG	2	2		COMBED DEC	BS	1150	1250
46/2	46035	LIMP		JUG	1	1		BALUSTER BASE WITH SLASHES ON UNDERSIDE	B	1150	1250
46/2	46035	LIMP		JUG	2	1		SLASHED STRAP HANDLE	R	1150	1250
46/2	46035	MEDLOC	LOWISH IRON;QUARTZ SAND	JUG	1	1		CUGL	BS	1150	1350
46/2	46035	MEDLOC	LOWISH IRON SANDY	JUG	12	1		CUGL;VERTICAL TRIAPP	BS	1150	1350
46/2	46040	EMLOC	SHELL/QUARTZ SAND	JAR	2	2			B	1150	1250
46/2	46040	EMLOC	SHELL/QUARTZ SAND	JAR	6	6			BS	1150	1250
46/2	46040	EMLOC	SHELL/QUARTZ SAND	JAR	27	27			BS	1150	1250
46/2	46040	LIMP			6	6			BS	1150	1250
46/2	46040	LIMP		JUG	1	1			R	1150	1250
46/2	46040	MEDLOC	LOWISH IRON OXID	JUG	6	6			BS	1150	1350
46/3	6088	TPW		DISH	1	1		OVAL DISH WITH BROWN TRANSFER	BS	1770	1900
47/1	6092	CREA		PLATE	1	1			BS	1765	1830
47/1	6092	PMLOC	OXID INCLUSIONLESS	BOWL	1	1		INT BROWN GL	BS	1550	1750

Sitecode	context	cname	subfabric	Form	Nosh	NoV	Action	Description	Part	earliest date	latest date
47/1	6092	PMLOC	OXID INCLUSIONLESS	JAR	1	1			BS	1550	1750
47/1	6093	TPW		BOWL	1	1			BS	1770	1900
47/1	6094	FREC		BOT	3	1			BS	1530	1680
47/1	6094	PEAR		CUP	1	1		FOOTRING	BS	1770	1900
47/1	6095	CREA		PLATE	1	1			R	1765	1830
47/1	6095	CREA		PLATE	1	1			B	1765	1830
47/1	6095	PEAR		PLATE	1	1		HAND-PAINTED IN CHINOISERIE STYLE	BS	1770	1900
47/1	6095	PMLOC	OXID;INCLUSIONLESS	JAR	1	1			BS	1550	1750
47/1	6096	CREA		PLATE	1	1			R	1765	1830
47/1	6096	CREA		PLATE	1	1			BS	1765	1830
47/1	6096	CREA		BOWL	1	1		INDUSTRIAL SLIPWARE;DARK BROWN	B	1765	1830
47/1	6096	CREA		PLATE	1	1			R	1765	1830
47/1	6096	TGW		CRESPINA	1	1		LOBE FROM CRESPINA;FREEHAND BLUE FLORAL DEC	BS	1640	1770
47/1	6096	TGW		CUP	1	1		PLAIN THIN-WALLED VESSEL	R	1640	1770
47/1	6096	TPW		PLATE	1	1		WIRE-CUT BASE	B	1770	1900
47/1	6096	TPW		PLATE	1	1			R	1770	1900
47/2	6097	TPW		CUP	1	1		OCTAGONAL EXT	R	1770	1900
47/2	47001	LIMP		JUG/JAR	6	1			B	1150	1250
47/2	47007	LIMP		JUG	8	1		STRAP HANDLE	R	1150	1250

Sitecode	context	cname	subfabric	Form	Nosh	NoV	Action	Description	Part	earliest date	latest date
47/2	47007	SNLOC	SHELL IN FINE GROUNDMASS	JAR	1	1		HANDMADE;EVERTED RIM	R	1000	1150
47/4	6100	LMLOC	OXID INCLUSIONLESS	BOWL	1	1		UNGLAZED	BS	1350	1500
47/4	6100	LMLOC	OXID SANDY	JUG	2	1		STRAP;UNGLAZED?	H	1350	1500
47/5	6098	WEST		BICONIC JUG	1	1		1600-1625	B	1600	1800
48/1	6015	CREA		JUG	1	1		OVAL HANDLE	H	1765	1830
48/1	6015	YELLOW		BOWL	1	1			BS	1850	1950
48/1	6101	TPW		OVAL DISH	1	1		WILLOW PATTERN	BS	1770	1900
48/1	6102	ENGS		BOT	1	1		BRISTOL-GLAZED	BS	1750	1900
48/1	6102	TPW		PLATE	1	1			BS	1770	1900
48/1	6102	TPW		RECT DISH	1	1		LID-SEATED WITH TRACES OF HANDLE? PROJECTING FROM RIM	BS	1770	1900
48/1	6102	TPW		PLATE	2	1			BS	1770	1900
48/1	6106	ENPO		TOY	1	1		TWO-PART MOULDED MINIATURE VESSEL. DOUBLE- HANDLED CONTAINING FLOWERS. PRESUMABLY FROM A DOLLS HOUSE	BS	1700	2000
48/1	6108	ENPO		KNIFE HANDLE	1	1		GLAZED WHITE PORCELAIN HANDLE, OVAL SECTIONED AND TAPERING TOWARDS KNIFE END. UNGLAZED FLANGE FOR FERRULE	BS	1700	2000
48/1	6108	TPW		PLATE	1	1			R	1770	1900

Sitecode	context	cname	subfabric	Form	Nosh	NoV	Action	Description	Part	earliest date	latest date
48/1	6108	TPW		PLATE	1	1			BS	1770	1900
48/2	6107	LPMLOC		BOWL	1	1		INT BROWN GLAZE;BROWN SLIP EXT	BS	1750	1950
48/2	6107	REFR		TPOT	1	1			R	1730	1800
48/2	6107	TPW		DISH	1	1			R	1770	1900
48/2	6107	TPW		PLATE	2	2			BS	1770	1900
48/3	6111	ENGS		BOT	1	1		BRISTOL-GLAZED	BS	1750	1900
48/4	6113	LMLOC		JAR	1	1			B	1350	1500
48/4	6113	MEDX	CALCAREOUS OXID	BOWL	1	1		INT WEATHERED GLAZE	BS	1150	1350
48/4	6113	SUND		BOWL	1	1			BS	1800	1900
48/4	6113	TPW		BOWL	1	1			BS	1770	1900
48/4	6113	TPW		PLATE	1	1			R	1770	1900
48/4	6113	TPW		BOWL	1	1		SPONGED	BS	1770	1900
48/5	6114	LMLOC		JAR	1	1		DISTINCTIVE RIMFORM	R	1350	1500
48/6	6115	CONP		PLATE	1	1		PLAIN	R	1770	1900
48/6	6115	PEAR		PLATE	1	1		BLUE FEATHERED	R	1770	1900
48/6	6115	TPW		VASE	1	1		LARGE VESSEL WITH CONCAVE NECK AND TRANSFERS INT AND EXT	BS	1770	1900
48/7	6116	PEAR		BOWL	1	1		BLUE LINE AROUND RIM	R	1770	1900
48/7	6116	PEAR		PLATE	1	1		BLUE FEATHERED	BS	1770	1900
48/7	6116	TPW		PLATE	1	1			BS	1770	1900
48/7	6116	TPW		CUP	2	1			BS	1770	1900

Sitecode	context	cname	subfabric	Form	Nosh	NoV	Action	Description	Part	earliest date	latest date
49/1	6117	ENGS	INCLUSIONLESS BUFF STONEWARE CF STAFFS	BOT	1	1			B	1750	1900
49/1	6118	LONS		TANK	1	1			BS	1670	1800
49/11	6315	LMLOC		JAR	1	1			R	1350	1500
49/3	6121	LMLOC		JAR/JUG	1	1	ABRADED		BS	1350	1500
49/5	6180	SNLOC	SHELL AND SPARSE QUARTZ SAND;INCLUSIONLESS BODY	JAR	3	1			BS	1000	1150
49/5	49022	EMLOC	SHELL AND SPARSE QUARTZ SAND	JAR	3	1			BS	1150	1250
49/5	49022	EMLOC	SHELL AND SPARSE QUARTZ SAND	JAR	6	6			BS	1150	1250
49/5	49022	EMLOC	SHELL AND SPARSE QUARTZ SAND	JAR	18	1	VERTICAL APPLIED STRIP, THUMBED		B	1150	1250
49/5	49025	EMLOC	SHELL AND SPARSE QUARTZ SAND	JAR	6	1			BS	1150	1250
49/5	49025	EMLOC	SHELL AND SPARSE QUARTZ SAND	JAR	1	1			B	1150	1250
49/5	49025	EMLOC	SHELL AND SPARSE QUARTZ SAND	JAR	1	1			BS	1150	1250
49/5	49027	EMLOC	SHELL AND SPARSE QUARTZ SAND	JAR	10	10			BS	1150	1250
49/5	49027	LIMP		JAR	2	2			BS	1150	1250
49/5	49027	SNLOC	SHELL	JAR	1	1	FLAT-TOPPED RIM		R	1000	1150
49/5	49028	EMLOC	SHELL AND SPARSE	BOWL	1	1	FLAT-TOPPED RIM		R	1150	1250

Sitecode	context	cname	subfabric	Form	Nosh	NoV	Action	Description	Part	earliest date	latest date
			QUARTZ SAND								
49/5	49029	EMLOC	SHELL AND SPARSE QUARTZ SAND	JAR	2	1		FLAT-TOPPED RIM	R	1150	1250
49/5	49029	EMLOC	SHELL AND SPARSE QUARTZ SAND	JAR	2	1		BEAD RIM	R	1150	1250
49/5	49029	EMLOC	SHELL AND SPARSE QUARTZ SAND	JAR	4	1		FLAT-TOPPED RIM	R	1150	1250
49/5	49029	EMLOC	SHELL AND SPARSE QUARTZ SAND	JAR	1	1		LID-SEATED RIM	R	1150	1250
49/5	49029	EMLOC	SHELL AND SPARSE QUARTZ SAND	JAR	3	1			BS	1150	1250
49/5	49029	EMLOC	SHELL AND SPARSE QUARTZ SAND	JAR	2	2			BS	1150	1250
49/5	49029	EMLOC	SHELL AND SPARSE QUARTZ SAND	JAR	1	1		INCIPIENT FLAT TOPPED RIM;HANDMADE?	R	1150	1250
49/5	49029	EMLOC	SHELL AND SPARSE QUARTZ SAND	JAR	1	1		FLAT-TOPPED RIM	R	1150	1250
49/5	49029	EMLOC	SHELL AND SPARSE QUARTZ SAND	JAR	2	1		FLAT-TOPPED RIM	R	1150	1250
49/5	49029	EMLOC	SHELL AND SPARSE QUARTZ SAND	JAR	20	20			BS	1150	1250
49/5	49029	EMLOC	SHELL AND SPARSE QUARTZ SAND	JAR	38	38			BS	1150	1250
49/5	49029	EMLOC	SHELL AND SPARSE QUARTZ SAND	JAR	9	9			BS	1150	1250
49/5	49029	LIMP		JAR	3	3		HANDMADE?	BS	1150	1250

Sitecode	context	cname	subfabric	Form	Nosh	NoV	Action	Description	Part	earliest date	latest date
49/5	49029	LIMP		JAR	1	1			BS	1150	1250
49/5	49029	LIMP?	REDUCED WITH MUSCOVITE IN GROUNDMASS	JAR	1	1			B	1150	1400
49/5	49029	SNLOC		JAR	5	5			BS	1000	1150
49/5	49029	SNLOC	SHELL	JAR	5	5			BS	1000	1150
49/5	49032	EMLOC	SHELL AND SPARSE QUARTZ SAND	JAR	1	1	FLAT-TOPPED RIM		BS	1150	1250
49/5	49032	EMLOC	SHELL AND SPARSE QUARTZ SAND	JAR	1	1			R	1150	1250
49/5	49035	EMLOC	SHELL AND SPARSE QUARTZ SAND	JAR	7	7			BS	1150	1250
49/5	49035	EMLOC	SHELL AND SPARSE QUARTZ SAND	JAR	1	1	FLAT-TOPPED RIM		R	1150	1250
49/5	49038	EMLOC	SHELL AND SPARSE QUARTZ SAND	JAR	4	1			BS	1150	1250
49/5	49038	EMLOC	SHELL AND SPARSE QUARTZ SAND	JAR	2	2			BS	1150	1250
49/5	49038	LIMP		JAR	2	2			BS	1150	1250
49/5	49038	SNLOC	SHELL	JAR	1	1			R	1000	1150
49/5	49038	SNLOC	SHELL	JAR	2	2			BS	1000	1150
49/5	49039	EMLOC	SHELL AND SPARSE QUARTZ SAND	JAR	1	1	FLAT-TOPPED RIM		R	1150	1250
49/5	49039	EMLOC	SHELL AND SPARSE QUARTZ SAND	JAR	1	1	FLAT-TOPPED RIM		R	1150	1250

Sitecode	context	cname	subfabric	Form	Nosh	NoV	Action	Description	Part	earliest date	latest date
49/5	49039	EMLOC	SHELL AND SPARSE QUARTZ SAND	JAR	1	1			BS	1150	1250
49/5	49039	LIMP		JAR/JUG	1	1			BS	1150	1250
49/5	49039	SNLOC	SHELL	JAR	3	3			BS	1000	1150
49/5	49039	SNLOC	SHELL	JAR	1	1			R	1000	1150
49/5	49039	SNLOC	SHELL	JAR	1	1			R	1000	1150
49/5	49041	RPOT?	INCLUSIONLESS;LOWISH IRON;VARIEGATED		1	1			BS		
49/5	49041	SNLOC	SHELL	JAR	7	1		SMALL SHERDS	BS	1000	1150
49/5	49041	SNLOC	SHELL	JAR	6	6			BS	1000	1150
49/5	49044	LIMP		JUG	1	1		SLASHED STRAP HANDLE	H	1150	1250
49/5	49044	LIMP		JUG	1	1		PLAIN? STRAP HANDLE (B/H JOIN)	H	1150	1250
49/5	49044	LIMP		JUG/JAR	2	2			BS	1150	1250
49/5	49044	PREH	INDENTITY OF INCLUSIONS UNCERTAIN;SHALE? GROG? SOME WITH HIGH CARBON CONTENT	JAR	2	2			BS	-4500	50
49/8	6124	TPW		PLATE	1	1		WILLOW PATTERN	B	1770	1900
50/1	6132	LMLOC	CALCAREOUS	JAR	1	1			BS	1350	1500
50/1	6132	LMLOC	OXID INCLUSIONLESS	BOWL	1	1		INT BROWN GL	BS	1350	1500
51/3	6133	LMLOC	SPARSE CALC AND CLAY PELLETS;OXID	JAR	2	2		THIN BROWN SLIP	BS	1350	1500
51/3	6133	LMLOC	OXID INCLUSIONLESS	BOWL	1	1		INT BROWN-MOTTLED GL	BS	1350	1500

Sitecode	context	cname	subfabric	Form	Nosh	NoV	Action	Description	Part	earliest date	latest date
51/3	6133	TPW		PLATE	2	2			R	1770	1900
51/4	6136	PMLOC	MODERATE	BOWL	1	1		BROWN INT GL	BS	1550	1750
52/1	6143	TPW		PLATE	1	1			R	1770	1900
52/2	6146	PMLOC	INCLUSIONLESS RED EARTHENWARE	JAR	1	1		MOTTLED BROWN GLAZE INT AND EXT	BS	1550	1750
52/2	6146	TPW		PLATE	1	1			BS	1770	1900
52/3	6145	PMLOC		BOWL	1	1			BS	1550	1750
52/3	6145	TPW		PLATE	1	1			R	1770	1900
52/4	6147	RPOT	ABUNDANT GREY GROG FRAGS	JAR	1	1		FLAT BASE	BS	40	400
53/1	6148	MEDLOC	LIGHT-BODIED SANDY	JUG	2	1		PLAIN LEAD GLAZED;ROD HANDLE;STABBED	H	1150	1350
53/1	6149	TPW		JUG	2	1		PARROT-BEAK SPOUT	BS	1770	1900
54/10	6196	PMLOC	LOWISH IRON;SILTY	JAR	1	1		MOTTLED BROWN GLAZE;HANDLE SCAR	BS	1550	1750
54/10	6197	CHPO		CUP	1	1			R	1620	1900
54/10	6197	CREA		TANK	1	1		INDUSTRIAL SLIPWARE	BS	1765	1830
54/10	6197	PMLOC		JAR	1	1			BS	1550	1750
54/10	6197	PMLOC		BOWL	3	3			R	1550	1750
54/10	6197	PMLOC		BOWL	2	2			BS	1550	1750
54/10	6197	TPW		CUP	1	1			R	1770	1900
54/10	6197	TPW		PLATE	1	1			BS	1770	1900
54/10	6197	WHITE		PLATE	1	1			BS	1850	1900

Sitecode	context	cname	subfabric	Form	Nosh	NoV	Action	Description	Part	earliest date	latest date
54/10	6197	WHITE		LID	1	1			R	1850	1900
54/2	6150	LMLOC	INCLUSIONLESS REDWARE	PIP	1	1		INT CUGL;SOOTED EXT	B	1350	1500
54/2	6153	LMLOC	INCLUSIONLESS REDWARE	BOWL	1	1		FLANGED BOWL; UNGLAZED	BS	1350	1500
54/4	6184	TPW		RECT DISH	1	1		LUSTRE DECORATION AND POLYCHROME TRANSFER PRINT	B	1770	1900
54/4	54006	PREH	GLAUCONITIC SAND	JAR	12	1			BS	-4500	50
54/6	6188	PEAR		PLATE	1	1		BLUE FEATHERED EDGE	R	1770	1900
54/6	6188	PMLOC	INCLUSIONLESS RED EARTHENWARE	JAR	1	1			R	1550	1750
54/6	6189	RAER		DJ	1	1			B	1450	1600
54/6	6190	PMLOC	INCLUSIONLESS RED EARTHENWARE	JAR	2	1			BS	1550	1750
54/6	6190	PMLOC	INCLUSIONLESS RED EARTHENWARE	BOWL	2	2			BS	1550	1750
54/6	6190	TPW		PLATE	1	1			R	1770	1900
54/6	6192	WHITE		PLATE	1	1		BAND OF THREE PINK LINES AROUND RIM	R	1850	1900
54/7	6191	LMLOC		JAR	1	1		EVERTED RIM	R	1350	1500
54/7	6191	LMLOC		JAR	1	1			BS	1350	1500
54/7	6191	PMLOC		FLP	1	1			BS	1550	1750
54/7	6191	SUND		BOWL	1	1		INT WHITE SLIP UNDER A CLEAR GLAZE WITH A FAINT	BS	1800	1900

Sitecode	context	cname	subfabric	Form	Nosh	NoV	Action	Description	Part	earliest date	latest date
								BLUE TINGE			
54/8	6193	PMLOC	LOWISH IRON;SILTY WITH ROUNDED IRON-RICH AND WHITE CLAY PELLETS	JAR	1	1		INT BROWN MOTTLED GLAZE	BS	1550	1750
54/9	6195	FREC		DJ	1	1		GROOVE BELOW RIM	R	1530	1680
54/9	6195	LMLOC	LOWISH IRON; INCLUSIONLESS	JAR	3	1			BS	1350	1500
54/9	6195	PMR	LOOKS LIKE LONDON S BANK FABRIC	BOWL	1	1			R	1600	1750
54/9	6195	TPW		CUP	1	1			BS	1770	1900
56/1	6198	PMLOC		BOWL	1	1			R	1550	1750
56/1	6198	SWSG		BOWL	1	1			BS	1700	1770
56/1	6198	SWSG		PLATE	1	1		MOULDED:RIM	R	1700	1770
56/1	6198	TGW		ALB	1	1		PURPLE LINES AROUND BASE	B	1640	1770
56/1	6198	TPW		CUP	1	1			BS	1770	1900
56/2	6210	ENGS		BOT	1	1		INT BRISTOL GLAZE	B	1750	1900
56/2	6211	LMLOC	INCLUSIONLESS OXID	JAR	2	1		UNGLAZED	BS	1350	1500
56/2	6212	PMLOC	INCLUSIONLESS OXID	FLP?	1	1		UNGLAZED;SINGLE GROOVE EXT	BS	1550	1750
56/2	6213	PMLOC	INCLUSIONLESS OXID	BOWL	1	1		INT GL	R	1550	1750
56/2	6216	PMLOC	INCLUSIONLESS OXID	BOWL	1	1		INT GL	B	1550	1750
56/2	6217	PMLOC	INCLUSIONLESS OXID	JUG	1	1		ROD HANDLE;INT BROWN GL	BS	1550	1750
56/4	6221	TPW		PLATE	1	1			B	1770	1900
56/6	6218	PMLOC		BOWL	1	1		INT BROWN GL	R	1550	1750

Sitecode	context	cname	subfabric	Form	Nosh	NoV	Action	Description	Part	earliest date	latest date
56/7	6220	PMLOC		BOWL	1	1		INT BROWN GL;DOUBLE BEADED RIM	R	1550	1750
56/8	6221	LMLOC	CALCAREOUS OXID	JAR	1	1		REDUCED EXT SURFACE (TUDOR BROWN)	BS	1350	1500
56/8	6221	LMLOC	INCLUSIONLESS OXID	BOWL	1	1		INT BROWN GL	BS	1350	1500
56/8	6221	TPW		PLATE	1	1		BLUE FEATHERED	R	1770	1900
57/1	6201	MEDLOC	ROUNDED QUARTZ SAND WITH SPARSE LARGE MUSC FLAKES	JUG	3	1		PLAIN EXT GLAZE;HORIZ GROOVES ON SHOULDER	BS	1150	1350
57/1	6201	MEDLOC		JUG	12	1		UNGLAZED (LOWER PART OF BODY)	BS	1150	1350
57/2	6203	TPW		PLATE	1	1			R	1770	1900
57/2	6203	WHITE		CLSD	1	1		BOWL? CHP?	BS	1850	1900
57/2	6209	TPW		PLATE	1	1			BS	1770	1900
57/2	6209	TPW		PLATE	1	1			R	1770	1900
57/3	6204	LMLOC	INCLUSIONLESS OXID	JAR	2	1			BS	1350	1500
57/3	6205	LIMP		JUG	1	1		STRAP HANDLE WITH SLASHING	H	1150	1250
57/3	6205	LIMP		JUG	1	1		SAGGING BASE	B	1150	1250
57/3	6206	DERBS		BLACK- LEADING BOT	1	1			BS	1800	1950
57/3	6206	ENGS		BOT	1	1		BRISTOL-GLAZED	BS	1750	1900
57/3	6206	LMLOC		JAR	1	1		OR PMLOC FLP	BS	1350	1500
57/3	6206	LMLOC		JAR	2	2			BS	1350	1500

Sitecode	context	cname	subfabric	Form	Nosh	NoV	Action	Description	Part	earliest date	latest date
57/3	6206	LONS	WHITE INT SLIP OR DEPO?	SJ	1	1			BS	1670	1800
57/3	6206	PMLOC		BOWL	1	1		INT MOTTLED BROWN GL	BS	1550	1750
57/3	6206	TPW		PLATE	1	1			R	1770	1900
57/3	6206	TPW		PLATE	1	1			BS	1770	1900
57/3	6206	TPW		PLATE	1	1		WILLOW PATTERN	BS	1770	1900
57/3	6206	TPW		JUG	1	1		ANGULAR HANDLE	BS	1770	1900
57/3	6337	MEDLOC	LOWISH IRON;SPARSE ROUNDED Q	JUG	1	1		NARROW RECT HANDLE, STABBED;PUSHED THROUGH RIM;SPLASHES OF PLAIN LEAD GL	BS	1150	1350
57/4	6222	LMLOC		JAR	1	1		INT MOTTLED BROWN GL	BS	1350	1500
57/4	6222	LMLOC		JAR	1	1		FLAT BASE;GLAZE SPOTS EXT B		1350	1500
57/4	6222	LMLOC		JAR	1	1			BS	1350	1500
57/4	6223	LMLOC	INCLUSIONLESS OXID	JAR	1	1		BLACKENED OUTER SURFACE	BS	1350	1500
57/4	6338	PMLOC		BOWL	1	1		INT MOTTLED BROWN GL	BS	1550	1750
57/4	6338	PMLOC		JAR	1	1		INT MOTTLED BROWN GL	BS	1550	1750
57/4	6338	PMLOC		BOWL	1	1		INT MOTTLED BROWN GL	B	1550	1750
58/1	6224	KOLN		DJ	1	1		SPRIGGED ROSE LEAVES AND STEM;MID 16TH C	BS	1500	1550
58/1	6225	LMLOC		BOWL	1	1		FLANGED	BS	1350	1500
58/1	6225	MEDLOC	QUARTZ SAND TEMPER;OXID	JAR	1	1		EVERTED RIM;SOOTED EXT	R	1150	1350
58/1	6225	PMLOC		BOWL	3	3		INT BROWN GL	BS	1550	1750
58/1	6225	PMLOC		PIP	1	1		HORIZONTAL HANDLE;INT	H	1550	1750

Sitecode	context	cname	subfabric	Form	Nosh	NoV	Action	Description	Part	earliest date	latest date
								BROWN GL			
58/1	6225	PMLOC	LOWISH IRON; FINE SAND	JAR	1	1		INT PLAIN GL	BS	1550	1750
58/1	6229	CSTN	FINE SILTY TEXTURE;HIGH IRON	CUP	1	1		PURPLE GL INT AND EXT;CYLINDRICAL WITH BAND OF GROOVES	BS	1500	1650
58/1	6229	PEAR		BOWL	1	1			B	1770	1900
58/1	6229	PMLOC		FLP	1	1		EXT HORIZ GROOVE	BS	1550	1750
58/1	6229	PMLOC		BOWL	1	1		INT BROWN GL	BS	1550	1750
58/1	6230	LMLOC	MODERATE GSQ SAND;LOWISH IRON	BOWL	1	1		INT PLAIN GL;SOOTED EXT	BS	1350	1500
58/1	6230	PMLOC		BOWL	1	1		INT BROWN GL	BS	1550	1750
58/1	6230	PMLOC		JAR	1	1		INT BROWN GL	BS	1550	1750
58/1	6230	RAER		DJ	1	1			BS	1450	1600
58/1	6328	LMLOC		BOWL/JAR	1	1			BS	1350	1500
58/1	6328	LMLOC		JAR	1	1		PLAIN EXT GL SPOTS	BS	1350	1500
58/1	6328	LMLOC	ABUNDANT QUARTZ SAND;OXID	JUG	1	1		EXT CUGL	BS	1350	1500
58/2	6231	CREA			1	1			BS	1765	1830
58/2	6231	PMLOC		BOWL	1	1			BS	1550	1750
58/2	6231	TPW		BOWL	1	1			R	1770	1900
58/3	6199	LMLOC	CALCAREOUS OXID	JAR	1	1		REDUCED SURFACES	BS	1350	1500
58/3	6231	LMLOC	MODERATE FE CONTENT;M IRON-COATED QUARTZ >1.0MM	JUG	1	1		REDUCED SURFACES;PLAIN STRAP HANDLE	H	1350	1500

Sitecode	context	cname	subfabric	Form	Nosh	NoV	Action	Description	Part	earliest date	latest date
58/3	6234	CONP		BOWL	1	1			B	1770	1900
58/3	6234	NCBW		JAR	1	1		INDUSTRIAL SLIPWARE;EXT WHITE SLIP AND DK BROWN LINES	BS	1800	1900
58/3	6234	PMLOC	INCLUSIONLESS OXID	BOWL	1	1		INT MOTTLED BROWN GL	BS	1550	1750
58/3	6234	TPW		CUP	1	1		GREEN INK	R	1770	1900
58/3	6234	TPW		PLATE	3	3			BS	1770	1900
58/3	6234	TPW		CUP	1	1			BS	1770	1900
58/3	6234	WHITE		TPOT	1	1		GREEN EXT GL; FLORAL PATTERN INT AND EXT;LARGE THICK-WALLED VESSEL	BS	1850	1900
58/3	6235	TPW		JAR	1	1			BS	1770	1900
58/3	6235	TPW		PLATE	1	1			BS	1770	1900
58/3	6236	TPW		CUP	1	1			B	1770	1900
58/3	6236	TPW		PLATE	1	1		GREEN INK	R	1770	1900
58/3	6236	WHITE		JAR	1	1		FLUTED MARMALADE JAR	R	1850	1900