

## Assessment of the Ceramic Building Material from HHH01

**Kate Steane and Alan Vince**

### Summary

There were 295 fragments of CBM weighing 16.633kg. Quantities of Roman CBM, including box tile and brick, was recovered from HHH01 29/3 suggesting a fairly high status building nearby. A building using Roman brick was present in the vicinity of HHH01 49/5 as indicated by the CBM. Flat roof tile from HHH01 43/4 suggests the possibility of a medieval/post medieval building timber building with a ceramic roof nearby.

### Description

### Methodology

The fragments of ceramic material were examined by eye and twelve fabrics were identified (Table 1). Examples of each fabric have been examined x20 magnification, except for modern brick and tile which includes material of various types (CBM10).

**Table 1**

Fabric Code	Period and type	Quantity	Weight
CBM1	medieval/post medieval	109 fragments	2.750kg
CBM2	medieval/post medieval	3 fragments	59g
CBM3	medieval/post medieval	1 fragment	14g
CBM4	medieval/post medieval	3 fragments	74g
CBM5	medieval/post medieval	1 fragment	13g
CBM6	Roman	137 fragments	12.200kg
CBM7	Roman	1 fragment	143g
CBM8	Roman	1 fragment	6g
CBM9	modern drainpipe	6 fragments	263g
CBM10	All modern brick and tile	7 fragments	210g
CBM11	Roman box tile	26 fragments	901g

## **Fabrics**

The most common fabric was Roman CBM06. There was a slightly smaller quantity of medieval/post medieval CBM01. Roman CBM11 was substantially present but then there were just a few fragments of the other fabrics.

### **CBM1**

The fabric is hard and oxidized. The most noticeable inclusions are sparse subangular voids which may have contained either shell or limestone, ranging up to 3.0mm across. Under x20 magnification the fabric is seen to contain abundant rounded pellets of relict clay, some retaining a laminar structure. The grains range up to 5.0mm across and are similar in colour to the groundmass. The groundmass contains abundant rounded clay pellets which are difficult to distinguish from the background, lenses within which contains abundant quartz silt.

### **CBM2**

The fabric is hard and oxidized. The principal inclusions are rounded dark red and black clay pellets up to 2.0mm across and sparse rounded voids lined with altered carbonate. The groundmass is fine-textured. The moulding sand is a fine subangular sand or coarse silt, containing few grains larger than 0.2mm across.

### **CBM3**

The fabric is hard and oxidized. The only large inclusions are sparse shell fragments up to 4.0mm across and rounded voids (once containing carbonate) up to 2.0mm across. The groundmass is variegated and ranges from yellow calcareous clay to salmon pink clay with only sparse calcareous silt. The moulding sand appears to have been composed of a rounded calcareous coarse sand or gravel.

### **CBM4**

The fabric is soft and oxidized. It contains sparse inclusions of subangular quartz, some with haematite coating. The moulding sand consists of similar grains together with polished, rounded quartz grains and rounded dark red iron-rich pellets up to 1.0mm across. The groundmass is calcareous with sparse muscovite laths and is also variegated with lenses of salmon pink and buff clay.

### **CBM5**

The fabric is hard and oxidized. It contains abundant, illsorted quartzose sand with grains up to 1.0mm across. Some of the grains are coated with haematite. Sparse angular flint fragments up to 1.0mm across and amorphous black concretions are also present. The groundmass is silty.

### **CBM6**

A soft oxidized fabric containing sparse polished, rounded quartz grains up to 3.0mm across, moderate rounded clay pellets up to 10.0mm across and sparse rounded flattened iron-rich grains up to 3.0mm across. The clay pellets range from dark brown to a light red (the same colour as the groundmass) and in some case there is a colour gradation within the grain. The groundmass is fine-textured.

### **CBM7**

A very soft oxidized off-white fabric. The fabric contains few large inclusions apart from sparse angular red iron-rich grains up to 1.0mm across. The groundmass is calcareous clay fired at too low a temperature for alteration of the CaCO<sub>3</sub>.

### **CBM8**

The fabric is hard and oxidized. It contains abundant sand grains. The sand consists of quartz grains (some polished and rounded) up to 1.0mm across, well-rounded dark red iron-rich grains up to 0.5mm across and sparse subangular brown-stained flint up to 1.0mm across. The groundmass is of variable texture, with lenses of inclusionless clay interleaved with micaceous, silty clay. The fabric has a clear lead glaze.

### **CBM9**

A hard oxidized fabric containing moderate rounded, subrounded and angular voids, lined with altered carbonate, up to 2.0mm across. Some of these voids appear to have contained shell. Sparse rounded black inclusions up to 2.0mm across appear to be vitrified iron-rich grains. The groundmass is calcareous.

### **CBM11**

A soft oxidized fabric containing sparse polished, rounded quartz grains up to 2.0mm across and moderate subangular quartz grains up to 0.5mm across. The groundmass contains abundant rounded clay pellets of similar colour and texture to the groundmass and sparse laths of muscovite.

### **Source**

The fabrics can be divided into those with calcareous bodies and those without. The calcareous bodied fabrics are CBM3, CBM4, CBM7 and CBM9. Of these, the last is rather different in texture from the remainder, in that the calcareous elements in the groundmass are distinguishable by eye against a red background whereas in the remainder they cannot be distinguished even at x20 magnification. The source of these wares is not known and such calcareous clays occur widely. For example, 'yellow' bricks and tiles were exported from Flanders in the later medieval period and occur around the east coast of the British isles.

The non-calcareous fabrics, CBM1, CBM2, CBM5, CBM6, CBM8 and CBM11, can be subdivided into those containing abundant relict clay pellets (CBM1, CBM2, CBM6 and CBM11) and those with abundant quartzose sand inclusions (CBM5 and CBM8). The former fabrics are distinguished mainly by texture and firing. They all contain similar quartzose inclusions: a red sand consisting of subangular quartz grains with haematite coating, and sparse polished rounded quartz grains. This sand is present in samples of Limpsfield ware and therefore all these fabrics are likely to also be relatively local.

The sandy wares can be separated in that CBM5 has a micaceous groundmass and CBM8 does not.

### **Chronology**

The likely chronological sequence of fabrics is shown in Fig 1. Fabrics CBM6, CBM7 and CBM11 are clearly of Roman date. It may be that a comparison of the dates of the Romano-British pottery from the sites where this tile has been found with the range of fabrics and forms might produce a closer date for individual types.

Only two fabrics are possibly of medieval date, CBM1 and CBM8 but even here it is likely that the tiles are actually of post-medieval date (and in the case of CBM1 it is likely that the fabric continued in use into the modern period. The widest range of fabrics occurred in the post-medieval period, reflecting the introduction of brick, and the replacement of thatch by ceramic tile. Very little pantile was found,

and this suggests that flat tiles continued to be used in this part of the country later than in London (considering the preponderance of post-medieval and later pottery on these sites).

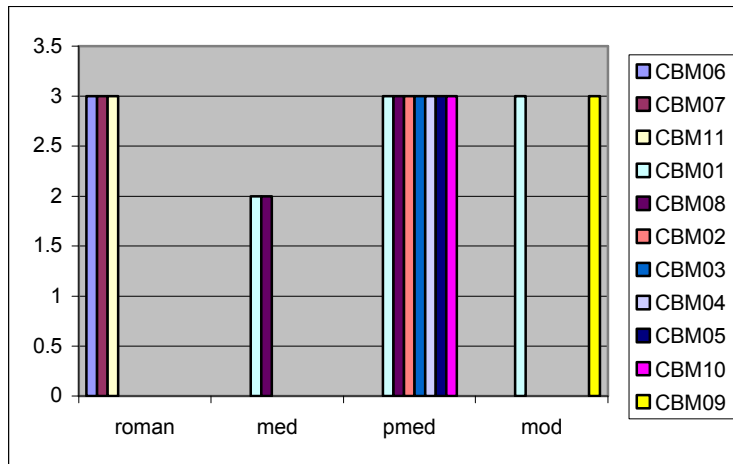


Figure 1 Suggested dating of the CBM fabric groups (2 = possibly current, 3 = definitely current)

## Forms



Figure 2 Roman brick showing signature mark



**Figure 3 Roman Brick showing signature mark**

The most common form was the medieval/post medieval flat roof tile in Fabric CBM01; three of these exhibited a square peg hole. Roman brick/tegula was also fairly ubiquitous. The other Roman forms include identified brick and tegula together with box tile and imbrex. The Roman brick included four with signatures, faint marks across the surface thought to indicate which tiler had made them (Figs 1 and 2); two of these were complete (both from HHH01 29/3 context 29050). One of the Roman tegula had a cutaway. The other medieval/post medieval forms include brick, curved roof tile, pantile and drain. Modern forms include brick, tile and drain pipe.

**Table 2**

CNAM	BO	BRIC	BRICK/	CUR	DRAI	FIELD	FLA	IMBR	PAN	TE	TEG	(blan	Grand
E	X	K	TEG	V	N	DRAIN	T	EX	T	G	?	k)	Total
CBM01		1		2	3		96		2			5	109
CBM02							3						3
CBM03							1						1
CBM04							3						3
CBM05		1											1
CBM06		30	73					6		20	6	2	137
CBM07		1											1
CBM08							1						1
CBM09						6							6
CBM10		5					2						7
CBM11	26												26
Grand Total	26	38	73	2	3	6	106	6	2	20	6	7	295

## Stratigraphy

Table 3 shows the overall distribution of CBM by fabric on the pipeline sites.

The largest quantity of material from any one site is Roman fabric CBM06 from HHH01 29/3; this is also where all of Roman fabric CBM11 comes from. Site 49/5 contains a good group of Roman fabric CBM06. There is a significant group of medieval/post medieval fabric CBM01 from HHH01 43/4. Otherwise the thin spread of material suggests refuse scatter.

**Table 3**

SITECO DE	CBM 01	CBM 02	CBM 03	CBM 04	CBM 05	CBM 06	CBM 07	CBM 08	CBM 09	CBM 10	CBM 11	Grand Total
HHH01 26/2	2											2
HHH01 29/1					1							1
HHH01 29/3	6				1	88					26	121
HHH01 30/4	1											1
HHH01 30/5	1					1						2
HHH01 32/2	1											1
HHH01 33/1	1											1
HHH01 33/3											2	2
HHH01 36/4	2						8	1				11
HHH01 40/1	4											4
HHH01 41/6	3	1										4
HHH01 43/4	39						3		1	6	1	50
HHH01 44/3	6											6
HHH01 45/3							2					2
HHH01 45/7	2										2	4
HHH01 46/2	3											3
HHH01							1					1

---

46/2-3													
HHH01 46/3	1												1
HHH01 48/3	1		1										2
HHH01 48/4	3												3
HHH01 48/5	2												2
HHH01 48/7	1												1
HHH01 49/5						35							35
HHH01 51/10	3												3
HHH01 51/11	5	1		1									7
HHH01 51/12									1				1
HHH01 51/9	1												1
HHH01 52/1	7								1				8
HHH01 52/2	2												2
HHH01 54/2	1												1
HHH01 54/4	1												1
HHH01 54/6	1												1
HHH01 56/1	1												1
HHH01 57/3	2												2
HHH01 57/4	4	1											5
HHH01 58/1	1												1
HHH01 58/2	1												1
Grand Total	109	3	1	3	1	137	1	1	6	7	26		295

---

Medieval/post medieval flat roof tile from HHH01 29/3 is only found in unstratified contexts (Table 4). The largest number of fragments of Roman CBM from HHH01 29/3 comes from 29068: 19 fragments of CBM06 and 17 of CBM11. Context 2905 contained 11 fragments of

CBM06 and two of CBM11. The focus of material in 29068 and 29050 suggests some Roman construction somewhere nearby and the scatter of material throughout many of the other contexts confirms this interpretation. The presence of box tile suggests a hypocaust indicating a fairly substantial high status building.

**Table 4**

SITECO DE	context	BOX	BRICK G	BRICK/TE	CURV	FLAT	IMBEX	TEG	TEG?	Grand Total
HHH01 29/3	6255					1		1		2
	6258					1				1
	6259			2						2
	6260		1			1		1		3
	6266	1			1	1				3
	6311		1			1				2
	29032	2	1							3
	29050	2	4				2	3	2	13
	29051	2								2
	29052	1	4				2			7
	29062		1	1						2
	29064			2						2
	29067			8						8
	29068	17		19						36
	29076			7						7
	29084			2						2
	29086			1						1
	29088			1						1
	29108			3				1		4
	29109							2		2
	29110		2							2
	29113			4						4
	29116			1						1
	29120		1	1						2
	29121	1					1			2
	29122							2		2
	29123		2	2				1		5
HHH01 29/3 Total		26	17	54	1	5	3	13	2	121



HHH01 49/5 contained a range of Roman building material (Table 5). The brick would indicate a good status structure somewhere nearby, but the lack of box tile indicates the building was not high status.

**Table 5**

SITECODE	context	BRICK	BRICK/TEG	IMBEX	TEG	TEG?	Grand Total
HHH01 49/5	49003				1		1
	49010	1				1	2
	49022			1		4	5
	49025			1			1
	49027			12			12
	49029	8					8
	49035	3					3
	49038				2		2
	49040	1					1
HHH01 49/5 Total		13	14	3	1	4	35

HHH01 43/4 contained a fair amount of flat roof tile but little brick (Table 6). This may suggest a medieval/post medieval timber building with a ceramic roof in the vicinity.

**Table 6**

SITECODE	Contex t	BRICK G	BRICK/TE G	CURV FIELD DRAIN	FLAT	PANT (blank)	Grand Total	
HHH01 43/4	43039					1	1	
	43044			1			1	
	43070		1				1	
	43103					2	2	
	43104					2	2	
	43105					2	2	
	43106					1	1	
	43108				2	3	1	6
	43109					3	1	4
	43110					4		4
	43111					3		3
	43112					5		5
	43113						2	2
	43114				3	4		7

43115	1			1	1			3
43116					1			1
43117					5			5
<b>HHH01 43/4 Total</b>	<b>1</b>	<b>1</b>	<b>1</b>	<b>6</b>	<b>36</b>	<b>1</b>	<b>4</b>	<b>50</b>

### Assessment

The Romano-British brick and tile from HHH01 aids our interpretation of the structures present in or close to the excavated sites. Very little extra work would be required to upgrade this assessment to a full report on the RB tile.

The only extra work which would be required would be an analysis of the three RB fabrics, CBM6, CBM7 and CBM11, and their comparison with the main medieval and later fabric, CBM1 (see **Costings**).

None of the medieval or later material need be studied further at this time, although undoubtedly analysis of a representative sample of the fabrics would provide a solid basis for further work on CBM in the area.

### Costings

Task	Hourly rate or unit cost	Quantity	Amount
Thin-section analysis of fabrics CBM1, CBM6, CBM7, CBM11	£21.00	4	£84.00
Chemical analysis of fabrics CBM1, CBM6, CBM7, CBM11	£21.00	48	£1,008.00
Revision of report	£21.00	8	£168.00
<b>Total</b>			<b>£1260.00</b>

Appendix

SITECODE	CONTEXT	STRAT?	CLASS	DESCRIPTION	NCNAME	SUBFABRICA	ACTION	FORM	NOSH	NOV	WT	TH	CONDITION	USE
HHH01 58/2	6231U/S		CBM	PMTIL	CBM01		FLAT		1	1	39	10		SURFACES OF TILE COVERED IN PITCH
HHH01 58/1	6229U/S		CBM	PMTIL	CBM01		FLAT		1	1	19	9		
HHH01 57/4	6223U/S		CBM	PMTIL	CBM02		FLAT		1	1	25	10		
HHH01 57/4	6223U/S		CBM	PMTIL	CBM01		FLAT		1	1	18	10		
HHH01 57/4	6223U/S		CBM	PMTIL	CBM01		FLAT		2	1	42	8		
HHH01 57/4	6223U/S		CBM	PMTIL	CBM01		FLAT		1	1	7	9		
HHH01 57/3	6206U/S		CBM	PMTIL	CBM01		FLAT		1	1	16	10		
HHH01 57/3	6206U/S		CBM	PMTIL	CBM01		FLAT		1	1	16	10		
HHH01 56/1	6198U/S		CBM	PMTIL	CBM01		FLAT		1	1	31	10		
HHH01 54/6	6190U/S		CBM	PMTIL	CBM01		FLAT		1	1	7	12		
HHH01 54/4	6184U/S		CBM	PMTIL	CBM01		FLAT		1	1	42	11		
HHH01 54/2	6154U/S		CBM	PMTIL	CBM01		FLAT		1	1	13	9		
HHH01	6146U/S		CBM	PMTIL	CBM01		FLAT		1	1	5		FRAGMENT	

SITECODE	CONTEXT	STRAT?	CLASS	DESCRIPTION	NCNAME	SUBFABRICATION	FORM	NOSH	NOV	WT	TH	CONDITION	USE
52/2													
HHH01	52/2		6146U/S	CBM	PMTIL	CBM01	FLAT	1	1	21	10		
HHH01	52/1		6143U/S	CBM	PMTIL	CBM10	BRICK	1	1	2		FRAGMENT	
HHH01	52/1		6143U/S	CBM	PMTIL	CBM01	FLAT	1	1	30	10		
HHH01	52/1		6144U/S	CBM	PMTIL	CBM01	FLAT	1	1	18	10		
HHH01	52/1		6144U/S	CBM	PMTIL	CBM01	FLAT	5	1	62	13		
HHH01	51/9		6138U/S	CBM	PMTIL	CBM01	FLAT	1	1	27	11		
HHH01	51/12		6320U/S	CBM	PMTIL	CBM10	FLAT	1	1	19	11		
HHH01	51/11		6140U/S	CBM	SQUARE PEG HOLE	PMTIL	CBM04	FLAT	1	1	31	10	
HHH01	51/11		6140U/S	CBM	PMTIL	CBM02	FLAT	1	1	9	10		
HHH01	51/11		6140U/S	CBM	PMTIL	CBM01	FLAT	1	1	44	11		
HHH01	51/11		6140U/S	CBM	PMTIL	CBM01	FLAT	1	1	34	10		
HHH01	51/11		6140U/S	CBM	PMTIL	CBM01	FLAT	1	1	26	12		
HHH01	51/11		6140U/S	CBM	PMTIL	CBM01	FLAT	1	1	21	10		

SITECODE	CONTEXT	STRAT?	CLASS	DESCRIPTION	NCNAME	SUBFABRICATION	FORM	NOSH	NOV	WT	TH	CONDITION	USE
HHH01 51/11	6140U/S		CBM		PMTIL	CBM01	FLAT	1	1	15	10		
HHH01 51/10	6139U/S		CBM	OVERFIRED	PMTIL	CBM01	FLAT	1	1	27	11		
HHH01 51/10	6317U/S		CBM		PMTIL	CBM01	FLAT	1	1	16	12		
HHH01 51/10	6318U/S		CBM		PMTIL	CBM01	FLAT	1	1	22	12		
HHH01 49/5	49003		CBM		RTIL	CBM06	IMBREX	1	1	3		FRAGMENT	
HHH01 49/5	49010		CBM		RTIL	CBM06	BRICK	1	1	34		FRAGMENT	
HHH01 49/5	49010		CBM	CUTAWAY	RTIL	CBM06	TEG	1	1	61	12		
HHH01 49/5	49022		CBM		RTIL	CBM06	BRICK/TEG	1	1	6		FRAGMENT	
HHH01 49/5	49022		CBM	SIGNATURE MARK	RTIL	CBM06	TEG?	4	1	102	18		
HHH01 49/5	49025		CBM		RTIL	CBM06	BRICK/TEG	1	1	7		FRAGMENT	
HHH01 49/5	49027		CBM	SANDED	RTIL	CBM06	BRICK/TEG	12	1	58		FRAGMENTS	
HHH01 49/5	49029		CBM		RTIL	CBM06	BRICK	1	1	78		FRAGMENT	
HHH01 49/5	49029		CBM		RTIL	CBM06	BRICK	1	1	75		FRAGMENT	

SITECODE	CONTEXT	STRAT?	CLASS	DESCRIPTION	NCNAME	SUBFABRICATION	FORM	NOSH	NOV	WT	TH	CONDITION	USE
HHH01 49/5	49029		CBM		RTIL	CBM06	BRICK	1	1	192	44		
HHH01 49/5	49029		CBM		RTIL	CBM06	BRICK	1	1	236	46		
HHH01 49/5	49029		CBM		RTIL	CBM06	BRICK	1	1	193	35		
HHH01 49/5	49029		CBM		RTIL	CBM06	BRICK	1	1	97	44		
HHH01 49/5	49029		CBM		RTIL	CBM06	BRICK	1	1	92	44		
HHH01 49/5	49029		CBM		RTIL	CBM06	BRICK	1	1	80	32		
HHH01 49/5	49035		CBM	SANDED	RTIL	CBM06	BRICK	3	1	236	45		
HHH01 49/5	49038		CBM	SANDED	RTIL	CBM06	IMBEX	2	1	22	12		
HHH01 49/5	49040		CBM		RTIL	CBM06	BRICK	1	1	357	40		
HHH01 48/7	6116U/S		CBM	OVERFIRED	PMTIL	CBM01	FLAT	1	1	74	11		
HHH01 48/5	6114U/S		CBM		PMTIL	CBM01	FLAT	1	1	33	11		
HHH01 48/5	6114U/S		CBM		PMTIL	CBM01	FLAT	1	1	11	11		
HHH01 48/4	6113U/S		CBM		PMTIL	CBM01	FLAT	1	1	18	10		

SITECODE	CONTEXT	STRAT?	CLASS	DESCRIPTION	NCNAME	SUBFABRICATION	FORM	NOSH	NOV	WT	TH	CONDITION	USE
HHH01 48/4	6113U/S		CBM	PMTIL	CBM01		FLAT	1	1	12	12		
HHH01 48/4	6113U/S		CBM	PMTIL	CBM01		FLAT	1	1	4	9		
HHH01 48/3	6111U/S		CBM	PMTIL	CBM03		FLAT	1	1	14	11		
HHH01 48/3	6111U/S		CBM	PMTIL	CBM01		FLAT	1	1	49	10		
HHH01 46/3	6085U/S		CBM	PMTIL	CBM01		FLAT	1	1	49	11		
HHH01 46/2-3	46023		CBM	RTIL	CBM06		TEG	1	1	184	22		
HHH01 46/2	4602U/S		CBM	PMTIL	CBM01		PANT	1	1	18		FRAGMENT	
HHH01 46/2	46017		CBM	PMTIL	CBM01		FLAT	1	1	52	12		
HHH01 46/2	46040		CBM	PMTIL	CBM01		FLAT	1	1	18	12		
HHH01 45/7	6077U/S		CBM	PMTIL	CBM01		FLAT	1	1	32	12		
HHH01 45/7	6078U/S		CBM	PMTIL	CBM10		FLAT	1	1	47	12	FRAGMENT COVERED IN PITCH	
HHH01 45/7	6078U/S		CBM	PMTIL	CBM10		BRICK	1	1	61		FRAGMENT	
HHH01 45/7	6079U/S		CBM	PMTIL	CBM01		FLAT	1	1	26	11		

SITECODE	CONTEXT	STRAT?	CLASS	DESCRIPTION	NC	NAMES	SUB	FABRICATION	FORM	NOSH	NOV	WT	TH	CONDITION	USE
HHH01 45/3	6071U/S		CBM	RTIL	CBM06			TEG		2	1	48	11		
HHH01 44/3	6057U/S		CBM	PMTIL	CBM01					1	1	7		FRAGMENT	
HHH01 44/3	6057U/S		CBM	PMTIL	CBM01			FLAT		1	1	18	11		
HHH01 44/3	6061U/S		CBM	PMTIL	CBM01					2	2	11		FRAGMENT	
HHH01 44/3	6061U/S		CBM	PMTIL	CBM01			FLAT		1	1	14	12		
HHH01 44/3	6061U/S		CBM	PMTIL	CBM01			FLAT		1	1	13	11		
HHH01 43/4	43039		CBM	PMTIL	CBM01			FLAT		1	1	22	12		
HHH01 43/4	43044		CBM	PMTIL	CBM01			CURV		1	1	336	20		
HHH01 43/4	43070		CBM	RTIL	CBM06			BRICK/TEG		1	1	7		FRAGMENT	
HHH01 43/4	43103		CBM	PMTIL	CBM01			FLAT		1	1	32	12		
HHH01 43/4	43103		CBM	PMTIL	CBM01			FLAT		1	1	12	13		
HHH01 43/4	43104		CBM	PMTIL	CBM01			FLAT		1	1	13	9		
HHH01 43/4	43104		CBM	PMTIL	CBM01			FLAT		1	1	11	10		



SITECODE	CONTEXT	STRAT?	CLASS	DESCRIPTION	NCNAME	SUBFABRICATION	FORM	NOSH	NOV	WT	TH	CONDITION	USE
HHH01 43/4	43105		CBM	THIN GLAZE	PMTIL	CBM08	FLAT	1	1	6	12		
HHH01 43/4	43105		CBM		PMTIL	CBM01	FLAT	1	1	9	10		
HHH01 43/4	43106		CBM		PMTIL	CBM01	PANT	1	1	7	11		
HHH01 43/4	43108		CBM		PMTIL	CBM09	FIELD DRAIN	1	1	59	12		
HHH01 43/4	43108		CBM		PMTIL	CBM09	FIELD DRAIN	1	1	45	13		
HHH01 43/4	43108		CBM		PMTIL	CBM01		1	1	4		FRAGMENT	
HHH01 43/4	43108		CBM		PMTIL	CBM01	FLAT	1	1	60	13		
HHH01 43/4	43108		CBM		PMTIL	CBM01	FLAT	1	1	10	10		
HHH01 43/4	43108		CBM		PMTIL	CBM01	FLAT	1	1	7	10		
HHH01 43/4	43109		CBM		PMTIL	CBM01		1	1	2		FRAGMENT	
HHH01 43/4	43109		CBM		PMTIL	CBM01	FLAT	1	1	45	12		
HHH01 43/4	43109		CBM		PMTIL	CBM01	FLAT	1	1	29	11		
HHH01 43/4	43109		CBM		PMTIL	CBM01	FLAT	1	1	7	10		

SITECODE	CONTEXT	STRAT?	CLASS	DESCRIPTION	NCNAME	SUBFABRICATION	FORM	NOSH	NOV	WT	TH	CONDITION	USE
HHH01 43/4	43110		CBM		PMTIL	CBM01	FLAT	1	1	7		FRAGMENT	
HHH01 43/4	43110		CBM		PMTIL	CBM01	FLAT	1	1	30	12		
HHH01 43/4	43110		CBM		PMTIL	CBM01	FLAT	1	1	26	12		
HHH01 43/4	43110		CBM		PMTIL	CBM01	FLAT	1	1	18	12		
HHH01 43/4	43111		CBM		PMTIL	CBM01	FLAT	1	1	31	11		
HHH01 43/4	43111		CBM		PMTIL	CBM01	FLAT	1	1	14	12		
HHH01 43/4	43111		CBM		PMTIL	CBM01	FLAT	1	1	3	10		
HHH01 43/4	43112		CBM	PEGHOLE	PMTIL	CBM01	FLAT	1	1	11	11		
HHH01 43/4	43112		CBM		PMTIL	CBM01	FLAT	1	1	23	10		
HHH01 43/4	43112		CBM		PMTIL	CBM01	FLAT	2	1	46	11		
HHH01 43/4	43112		CBM		PMTIL	CBM01	FLAT	1	1	9	12		
HHH01 43/4	43113		CBM		RTIL	CBM06		2	1	27		ABRADED FRAGMENTS	
HHH01 43/4	43114		CBM		PMTIL	CBM09	FIELD DRAIN	3	1	114	11		

SITECODE	CONTEXT	STRAT?	CLASS	DESCRIPTION	NCNAME	SUBFABRICATION	FORM	NOSH	NOV	WT	TH	CONDITION	USE
HHH01 43/4	43114		CBM	PMTIL	CBM01		FLAT	1	1	6		FRAGMENT	
HHH01 43/4	43114		CBM	PMTIL	CBM01		FLAT	1	1	51	12		
HHH01 43/4	43114		CBM	PMTIL	CBM01		FLAT	1	1	10	12		
HHH01 43/4	43114		CBM	PMTIL	CBM01		FLAT	1	1	11	11		
HHH01 43/4	43115		CBM	PMTIL	CBM10		BRICK	1	1	20		FRAGMENT	
HHH01 43/4	43115		CBM	PMTIL	CBM09		FIELD DRAIN	1	1	45	12		
HHH01 43/4	43115		CBM	PMTIL	CBM01		FLAT	1	1	42	11		
HHH01 43/4	43116		CBM	PMTIL	CBM01		FLAT	1	1	22	11		
HHH01 43/4	43117		CBM	PMTIL	CBM01		FLAT	1	1	68	10		
HHH01 43/4	43117		CBM	PMTIL	CBM01		FLAT	1	1	16	11		
HHH01 43/4	43117		CBM	PMTIL	CBM01		FLAT	1	1	15	12		
HHH01 43/4	43117		CBM	PMTIL	CBM01		FLAT	1	1	18	11		
HHH01 43/4	43117		CBM	PMTIL	CBM01		FLAT	1	1	9	11		

SITECODE	CONTEXT	STRAT?	CLASS	DESCRIPTION	NCNAME	SUBFABRICATION	FORM	NOSH	NOV	WT	TH	CONDITION	USE
HHH01 41/6	6049U/S		CBM		PMTIL	CBM02	FLAT	1	1	25	10		
HHH01 41/6	6049U/S		CBM	SQUARE PEG HOLE	PMTIL	CBM01	FLAT	1	1	117	12		
HHH01 41/6	6049U/S		CBM		PMTIL	CBM01	FLAT	1	1	61	12		
HHH01 41/6	6049U/S		CBM		PMTIL	CBM01	FLAT	1	1	34	12		
HHH01 40/1	6043U/S		CBM		PMTIL	CBM01	FLAT	1	1	10	10		
HHH01 40/1	6043U/S		CBM		PMTIL	CBM01	FLAT	1	1	41	11		
HHH01 40/1	6043U/S		CBM		PMTIL	CBM01	FLAT	1	1	18	12		
HHH01 40/1	6043U/S		CBM		PMTIL	CBM01	DRAIN	1	1	7	7		
HHH01 36/4	36008		CBM		RTIL	CBM06	BRICK	1	1	412	55		
HHH01 36/4	36060		CBM		RTIL	CBM06	BRICK/TEG	1	1	16		FRAGMENTS	
HHH01 36/4	36060		CBM		PMTIL	CBM01	DRAIN	2	1	6		FRAGMENTS	
HHH01 36/4	36070		CBM		RTIL	CBM06	BRICK/TEG	2	2	24		FRAGMENTS	
HHH01 36/4	36070		CBM		RTIL	CBM06	TEG	1	1	89		FRAGMENT	

SITECODE	CONTEXT	STRAT?	CLASS	DESCRIPTION	NCNAME	SUBFABRICATION	FORM	NOSH	NOV	WT	TH	CONDITION	USE
HHH01 36/4	36083		CBM		RTIL	CBM06	TEG	1	1	578	33		
HHH01 36/4	36090		CBM		RTIL	CBM06	BRICK/TEG	1	1	37		FRAGMENT	
HHH01 36/4	36134		CBM		PMTIL	CBM07	BRICK	1	1	143	35		
HHH01 36/4	36134		CBM		RTIL	CBM06	TEG	1	1	364	30		
HHH01 33/3	6280U/S		CBM	FUEL ASH GLAZE	PMTIL	CBM10	BRICK	2	1	61			
HHH01 33/1	6279U/S		CBM	SQUARE PEG HOLE	PMTIL	CBM01	FLAT	1	1	28	11		
HHH01 32/2	6276U/S		CBM		PMTIL	CBM01	FLAT	1	1	14	12		
HHH01 30/5	6270U/S		CBM		PMTIL	CBM05	BRICK	1	1	13			
HHH01 30/5	6270U/S		CBM		PMTIL	CBM01	FLAT	1	1	20	12		
HHH01 30/4	6269U/S		CBM		PMTIL	CBM01	FLAT	1	1	20	11		
HHH01 29/3	6255U/S		CBM		RTIL	CBM06	TEG	1	1	15	131		
HHH01 29/3	6255U/S		CBM		PMTIL	CBM01	FLAT	1	1	11	12		
HHH01 29/3	6258U/S		CBM		PMTIL	CBM01	FLAT	1	1	3		FRAGMENT	

SITECODE	CONTEXT	STRAT?	CLASS	DESCRIPTION	NC	NAMES	SUB	FABRICATION	FORM	NOSH	NOV	WT	TH	CONDITION	USE
HHH01 29/3	6259U/S		CBM			RTIL	CBM06		BRICK/TEG	2	2	255		FRAGMENTS	
HHH01 29/3	6260U/S		CBM			RTIL	CBM06		TEG	1	1	64	20		
HHH01 29/3	6260U/S		CBM			RTIL	CBM06		BRICK	1	1	71			
HHH01 29/3	6260U/S		CBM			PMTIL	CBM01		FLAT	1	1	36	10		
HHH01 29/3	6266U/S		CBM			RTIL	CBM11		BOX	1	1	168	17		
HHH01 29/3	6266U/S		CBM			PMTIL	CBM04		FLAT	1	1	23	10		
HHH01 29/3	6266U/S		CBM			PMTIL	CBM01		CURV	1	1	7	12		
HHH01 29/3	6311U/S		CBM			PMTIL	CBM01		BRICK	1	1	90		FRAGMENT	
HHH01 29/3	6311U/S		CBM			PMTIL	CBM01		FLAT	1	1	32	11		
HHH01 29/3	29032		CBM			RTIL	CBM11		BOX	1	1	189	17		
HHH01 29/3	29032		CBM			RTIL	CBM11		BOX	1	1	59	15		
HHH01 29/3	29032		CBM	ASH GLAZE		RTIL	CBM06		BRICK	1	1	1006	27		
HHH01 29/3	29050U/S?		CBM			RTIL	CBM11		BOX	1	1	156	18		

SITECODE	CONTEXT	STRAT?	CLASS	DESCRIPTION	CNAMES	SUBFABRICATION	FORM	NOSH	NOV	WT	TH	CONDITION	USE
HHH01 29/3	29050U/S?		CBM		RTIL	CBM11	BOX	1	1	24	13		
HHH01 29/3	29050U/S?		CBM		RTIL	CBM06	TEG	1	1	20		FRAGMENT	
HHH01 29/3	29050U/S?		CBM	SANDED	RTIL	CBM06	TEG	1	1	355	25		
HHH01 29/3	29050U/S?		CBM	SANDED	RTIL	CBM06	TEG?	1	1	261	23		
HHH01 29/3	29050U/S?		CBM	SIGNATURE MARK	RTIL	CBM06	PH BRICK	1	1	1063	39		
HHH01 29/3	29050U/S?		CBM	SIGNATURE MARK	RTIL	CBM06	PH BRICK	1	1	791	28		
HHH01 29/3	29050U/S?		CBM	SIGNATURE MARK	RTIL	CBM06	BRICK	1	1	131	28		
HHH01 29/3	29050U/S?		CBM		RTIL	CBM06	TEG?	1	1	175	24		
HHH01 29/3	29050U/S?		CBM		RTIL	CBM06	TEG	1	1	178	16		
HHH01 29/3	29050U/S?		CBM		RTIL	CBM06	IMBEX	1	1	13	14		
HHH01 29/3	29050U/S?		CBM		RTIL	CBM06	IMBEX	1	1	56	11		
HHH01 29/3	29050U/S?		CBM		RTIL	CBM06	BRICK	1	1	119	34		
HHH01 29/3	29051		CBM		RTIL	CBM11	BOX	2	2	25		FRAGMENTS	

SITECODE	CONTEXT	STRAT?	CLASS	DESCRIPTION	NCNAME	SUBFABRICATION	FORM	NOSH	NOV	WT	TH	CONDITION	USE
HHH01 29/3	29052		CBM	RTIL	CBM11		BOX	1	1	90	15		
HHH01 29/3	29052		CBM	RTIL	CBM06		TEG	1	1	112	25		
HHH01 29/3	29052		CBM	RTIL	CBM06		TEG	1	1	72	15		
HHH01 29/3	29052		CBM	RTIL	CBM06		BRICK	1	1	444	38		
HHH01 29/3	29052		CBM	RTIL	CBM06		BRICK	1	1	127	36		
HHH01 29/3	29052		CBM	RTIL	CBM06		BRICK	1	1	206	36		
HHH01 29/3	29052		CBM	RTIL	CBM06		BRICK	1	1	58	25		
HHH01 29/3	29062		CBM	RTIL	CBM06		BRICK	1	1	52		FRAGMENT	
HHH01 29/3	29062		CBM	RTIL	CBM06		BRICK/TEG	1	1	11		FRAGMENT	
HHH01 29/3	29064		CBM	RTIL	CBM06		BRICK/TEG	2	2	10		FRAGMENTS	
HHH01 29/3	29067		CBM	RTIL	CBM06		BRICK/TEG	8	8	40		FRAGMENTS	
HHH01 29/3	29068		CBM	RTIL	CBM11		BOX	17	16	175		FRAGMENTS	
HHH01 29/3	29068		CBM	RTIL	CBM06		BRICK/TEG	18	17	115		FRAGMENTS	



SITECODE	CONTEXT	STRAT?	CLASS	DESCRIPTION	NCNAME	SUBFABRICATION	FORM	NOSH	NOV	WT	TH	CONDITION	USE
HHH01 29/3	29068		CBM	RTIL	CBM06		BRICK/TEG	1	1	10		FRAGMENT	
HHH01 29/3	29076		CBM	RTIL	CBM06		BRICK/TEG	7	7	98		FRAGMENTS	
HHH01 29/3	29084		CBM	RTIL	CBM06		BRICK/TEG	2	2	19		FRAGMENTS	
HHH01 29/3	29086		CBM	RTIL	CBM06		BRICK/TEG	1	1	14		FRAGMENT	
HHH01 29/3	29088		CBM	RTIL	CBM06		BRICK/TEG	1	1	9		FRAGMENT	
HHH01 29/3	29108		CBM	RTIL	CBM06		BRICK/TEG	3	3	42		FRAGMENTS	
HHH01 29/3	29108		CBM	RTIL	CBM06		TEG	1	1	231	19		
HHH01 29/3	29109		CBM	RTIL	CBM06		TEG	2	1	293	26		
HHH01 29/3	29110	SIGNATURE?	CBM	RTIL	CBM06		BRICK	2	1	431	35		
HHH01 29/3	29113		CBM	RTIL	CBM06		BRICK/TEG	4	4	34		FRAGMENTS	
HHH01 29/3	29116		CBM	RTIL	CBM06		BRICK/TEG	1	1	1		FRAGMENT	
HHH01 29/3	29120		CBM	RTIL	CBM06		BRICK	1	1	102		FRAGMENT	
HHH01 29/3	29120		CBM	RTIL	CBM06		BRICK/TEG	1	1	26		FRAGMENT	

SITECODE	CONTEXT	STRAT?	CLASS	DESCRIPTION	NCNAME	SUBFABRICATION	FORM	NOSH	NOV	WT	TH	CONDITION	USE
HHH01 29/3	29121		CBM	RTIL	CBM11		BOX	1	1	15		FRAGMENT	
HHH01 29/3	29121		CBM	RTIL	CBM06		IMBEX	1	1	66	12		
HHH01 29/3	29122		CBM	RTIL	CBM06		TEG	2	1	916	20		
HHH01 29/3	29123		CBM	RTIL	CBM06		BRICK/TEG	2	2	29		FRAGMENTS	
HHH01 29/3	29123		CBM	RTIL	CBM06		TEG	1	1	31		FRAGMENT	
HHH01 29/3	29123		CBM	RTIL	CBM06		BRICK	1	1	230	33		
HHH01 29/3	29123		CBM	RTIL	CBM06		BRICK	1	1	83	32		
HHH01 29/1	6244U/S		CBM	PMTIL	CBM04		FLAT	1	1	20	10		
HHH01 26/2	6002U/S		CBM	PMTIL	CBM01		FLAT	2	1	26	14		