

Assessment of the non-ceramic finds from Hob Moor School, York (OSA02 EV13)

Alan Vince

Twenty-two non-ceramic artefacts were recovered from the evaluation of the Hob Moor School, York, by On-Site Archaeology (Site Code SA02 EV13). The majority of these were clay tobacco pipes, including a group of mid/late 17th-century pipes (the only evidence for activity at this period). Other finds of note were a horseshoe and a lead shot.

Description

Stone

A fragment of unburnt coal was recovered from context 3009. This is likely to have been post-medieval or later domestic fuel.

Clay Tobacco Pipe

Fourteen fragments of clay tobacco pipe were recovered. They include four bowls. Those from context 1002 are of mid/late 17th century date (c.1660-80), both of which consist of joining fragments. That from context 2016, a plain spurred bowl, is probably of 18th- or early 19th-century date and that from context 1007, of 19th-century date, is a decorated bowl. The decoration includes a stag's head.

Glass

Four fragments of glass were recovered. All are probably of late 18th century or later date. They include two dark green wine bottle fragments, both of the tall form introduced in the middle of the 18th century (contexts 1002 and 3009). A fragment of a bottle in a blue metal was recovered from context 9001. It is probably of 19th-century or later date. Finally, context 9001 produced a fragment of mould blown milk bottle bearing the raised inscription 'INT'. It is tempting to reconstruct this inscription as '[ONE P]INT'.

Iron

An iron nail with wood grain preserved in its corrosion products was recovered from context 9001. A fragment of horseshoe was recovered from context 5006. The shoe was very worn before being lost or discarded and has three rectangular nail holes, one of which still retains the corroded remnants of the nail (Fig 1).

A rectangular fragment of iron from context 2001 may also be a fragment of horseshoe since it is of similar width and thickness, shows the same structure in x-ray and is slightly tapering in shape (Fig 2). However, it might also have been a binding strip or a piece of structural metalwork, such as a hinge.

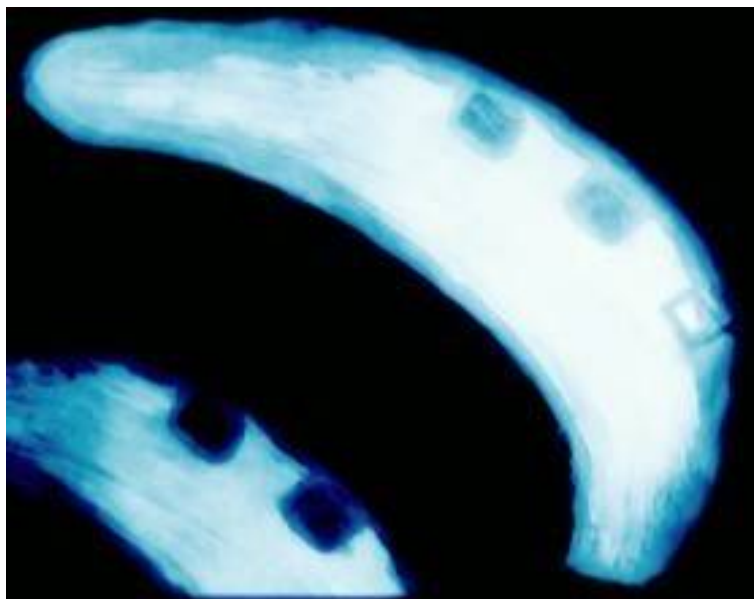


Figure 1 Iron Horse Shoe from context 5006 (inset: longer exposure)

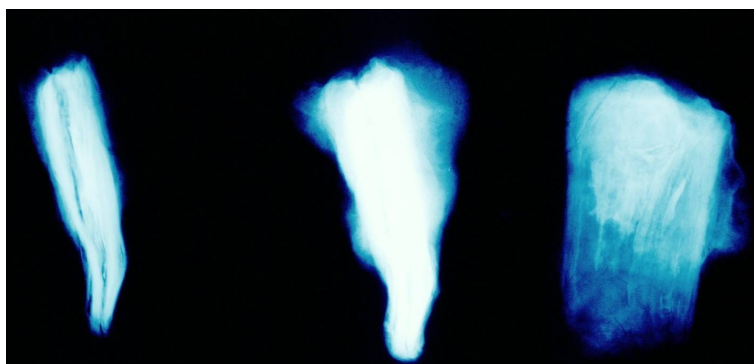


Figure 2 Unidentified Iron Object from Context 1002 (Left and centre: site views with different x-ray exposures).

Lead

A small lead alloy shot was found in context 9001. The shot had been made in a two-part mould and showed no signs of having been fired. Moulder shot was replaced by dropped shot, formed by dropping molten lead alloy from the top of a tall tower into a vat of water. This process was first patented in 1769 by William Watts. This does not necessarily mean that moulded shot must be earlier than this, although it is likely that it rapidly replaced the earlier technique.

Assessment

All of the recovered non-ceramic finds are likely to be of post-medieval or later date. The clay tobacco pipes, the lead shot and the horseshoe are consistent with a rural post-medieval context (ie finds lost or discarded in the fields) whereas the glass is likely to be domestic debris.

Appendix

Context	REFNO	trench	class	cname	subfabric	Form	Nosh	NoV	Weight	Description	Part diameter	Condition
1002		1	PMGL	PMGL	DKGR	BOT	1	1	7	TALL BOTTLE	BS	0
1002		1	CTP	PIPECLAY		PIPE	2	1	26	HEELED BOWL C.1660-80	BS	BROWN 0 STAINING
1002		1	CTP	PIPECLAY		PIPE	3	1	23	HEELED BOWL C.1660-80	BS	BROWN 0 STAINING
1002		1	CTP	PIPECLAY		PIPE	2	2	3	18TH C BORE DIAM?	BS	BROWN 0 STAINING
1002		1	CTP	PIPECLAY		PIPE	5	5	15	17TH C BORE DIAM?	BS	BROWN 0 STAINING
1002		1	IRON	IRON		OBJECT	1	1		ROUGHLY RECTANGULAR 0 PLATE	BS	HEAVILY 0 CORRODED

Context	REFNO	trench	class	cname	subfabric	Form	Nosh	NoV	Weight	Description	Part diameter	Condition
1007	1		CTP	PIPECLAY		PIPE	1	1		DECORATED SPURRED BOWL; E 19TH C? STAG'S 10 HEAD ON BACK OF BOWL	BS	0
2016	2		CTP	PIPECLAY		PIPE	1	1		SPURRED BOWL ? 18TH 7 C?	BS	0
3009	3		PMGL	PMGL	DKGR	BOT	1	1		12 TALL BOTTLE	BS	0
5006	2		IRON	IRON		HORSESHOE	1	1		APPROX ONE HALF OF SHOE;THREE RECTANGULAR HOLES, 0 ONE CONTAINING NAIL	BS	0 WORN

Context	REFNO	trench	class	cname	subfabric	Form	Nosh	NoV	Weight	Description	Part diameter	Condition
9001	9		PMGL	PMGL	CLEAR	BOT	1	1	12'INT'	MILK BOTTLE;MOULDED WITH RAISED LETTERING	BS	0
9001	9		PMGL	PMGL	BLUE	BOT	1	1	1		BS	0
9001	9		IRON	IRON	NAIL		1	1		WOOD GRAIN PRESERVED IN 5 CORROSION	BS	0 CORRODED
9001	9		LEAD	LEAD	LEAD	SHOT	1	1		MADE IN TWO-PART 1 MOULD;NO SIGN OF USE	BS	SLIGHT 1.8 CORROSION