

Assessment of the finds from 1-3 South Parade, York (OSA02 WB6)

Alan Vince, Barbara Precious and Kate Steane

Summary

A watching brief carried out at 1-34 South Parade, York, by On-Site Archaeology produced 255 artefacts (weighing 4 Kg), mainly pottery of Roman date. There is, however, a reasonable collection of medieval pottery, spanning the late 10th/11th to the late 14th/15th centuries, smaller quantities of post-medieval material (pottery and clay tobacco pipes) and modern finds (pottery).

Description

Ceramic Building Material

Seven sherds of ceramic building material were recovered from the watching brief. Three of these were positively identified as being Roman in date: an imbrex tile from context 4 and a tegula from context 3. A possible tegula was also recovered from context 2.



Figure 1 medieval flat roof tile from context 2 (scale in mm).

Contexts 1 and 2 produced fragments of medieval or post-medieval flat roof tiles. That from context 2 shows a paw print from an adult dog (Fig 1).

Clay Tobacco Pipe

A stem from a clay tobacco pipe was recovered from context 402. the bore diameter suggests a late 17th-century or later date.

Pottery

Roman

One hundred and thirty-nine sherds of Romano-British pottery were recovered, weighing 2.437Kg and representing no more than 124 vessels. The range of wares present (Table 1) is typical of York in the mid to late Roman period but there is very little from the site earlier than c.150AD. The earliest sherd seems to be a BB1 bowl from context 400, which dates to the early/mid 2nd century. The latest sherds are Calcite Gritted wares of Huntcliffe type, and a possible sherd of a handmade greyware jar from context 2. The majority of the sherds, however, date between the late 2nd and the mid 4th centuries.

Table 1

Class	YAT code	Total
Amphorae	AP25	4
BB1	B1	1
BB2	B2	3
C. gritted	K1	5
	K1?	2
	K2	1
CGS	S3	3
Crambeck	B11?	3
	B12	7
Ebor	E1	5
	E2	1

	E8	3
Ebor white	W1	3
Grey	G0	3
	G1	27
	G2	2
Grey B.	B14	1
	B3	27
Late h/m	B18?	1
Misc. oxid	O0	2
Mortaria	M1	1
	M16	1
NVCC	C1A	16
	C1A?	1
	C1B	2
	C2	4
	C3	4
Rhenish	C23	2
'White'	P0	1
	P8?	1
Grand Total		137

One hundred and nine sherds could be assigned to a form (Table 2). The most common form was the jar, with 57 sherds, followed by beakers, with 22 sherds. Activities represented include preparation and storage of food (63 sherds), followed by drinking (24 sherds) and table wares (16 sherds). This range of vessels indicates permanent settlement rather than, say, graveside rituals. The exception may be the complete/smashed vessel from context 404.

Table 2

Broad Class	FORM	Total
-	CLSD	6
Amphora	AP25	4
Beakers	K	21
	KF	1
Bowls	B	2
	B/D	3
	BF	1
Castor Boxes	YB1	1
Dishes	D	3
	D?	1
	DF	3
	DP	2
Flagons	F	2
Jars	J	31
	J/K	6
	JC	10
	JC?	3
	JC5	2
	JH3	3
	JI	1
	JS	1
Lids	LD	1

Mortaria	M	1
Grand Total		109

One vessel, a Nene Valley colour-coated beaker from context 404, is smashed and could be reconstructed for illustration or display. Two further sherds, a Crambeck dish from context 1016 and an Ebor ware bowl from context 400, cannot be precisely paralleled in Monaghan's corpus of York Roman pottery and should be illustrated.

Medieval

Sixty-eight sherds of medieval pottery were recovered from the site. Two of these, from the same vessel, are probably of pre-Conquest date (Torksey ware, TORK, from context 1). There is also a substantial quantity of later 11th to early 13th-century York Gritty ware (YG, 14 sherds) and Hillam ware, which has a higher iron content in the body (HILLAM, 3 sherds). Late 12th to early 13th-century material is represented by sherds of York glazed ware and Beverley ware (YORK and BEVO).

The majority of the medieval pottery is of high and later medieval date, however. It consists of Brandsby-type ware (BRANDSBY, 22 sherds) and Humber ware (HUM, 21 sherds), together with a single sherd of Walmgate ware and two sherds of Coal Measures whiteware, one of which is fairly certain to come from the Rawmarsh potteries which operated in the 15th/16th century (CMW).

Post-medieval

Post-medieval pottery consists of two sherds of Ryedale ware.

Early Modern and later

Late 18th-century and later pottery consists of sherds of a locally-produced flower pot and a chimney pot (LPMLOC) and sherds of Creamware (CREA) and transfer-printed ware (TPW).

Iron

Three nails were recovered, from contexts 3, 402 and 406. They are undatable and could be of Roman, Medieval or later date. The lack of demonstrable post-Roman finds in context 406 may suggest that this nail at least is of Roman date and evidence of structural activity on or near the site.

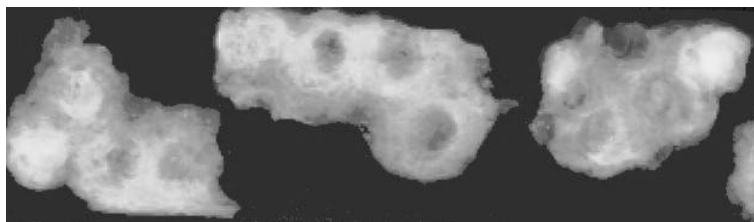


Figure 2

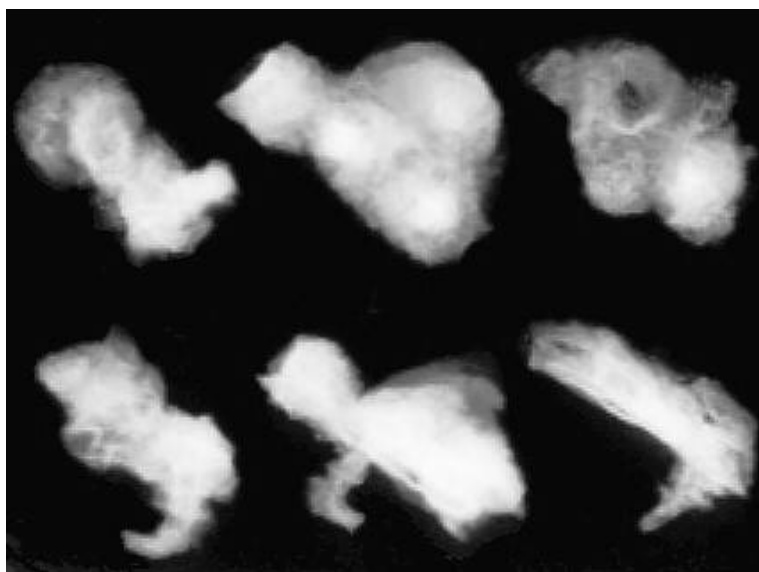


Figure 3

The remains of a hobnail shoe were recovered from context 414 (which produced mid/late Roman pottery). The domed hobnails were closely packed but no discernable pattern survives (Fig 2). Nor is there any evidence for the use of two or more nail head sizes. The nails have been solidified into a mass (now broken) through corrosion. The leather sole of the shoe (or boot or sandal, hobnails were used on all three) has not survived but two surviving nail shanks are bent at right angles about 8-9mm from the base of the nail heads, giving an approximate idea of the sole's thickness (Fig 3). Such footwear was worn throughout the Roman period and is consistent with the mid/late Roman context date.

Assessment

Stratigraphy

The Romano-British pottery comes from ten contexts (Table 3). Of these, the earliest contain pottery of late 2nd/3rd century date (Contexts 402, 404 and 417), although 402 also contains post-Roman material (see below). Later 3rd to 4th-century pottery is the latest types present in contexts 406, 414 and 1016) whilst the latest types, dating to the late 4th century occur in contexts 2 and 3, which also contain post-Roman material.

Table 3

Context	Monaghan Ceramic Phase
1	CP3/POSTRO
2	CP4B/POSTRO
3	CP4B/POSTRO
400	CP4A-B

402	CP2B-3/POSTRO
404	CPL2B-E3B
406	CP3B-4A
414	CP3
417	M2-3C
1016	CP4A

The post-Roman pottery comes from four contexts:

Context 1 is dated to the late medieval period or later by Humber ware.

Context 2 is dated to the late 15th century or later by the Rawmarsh sherd but the chimney pot would suggest a later date, unless this vessel is actually of Roman date, since wheelthrown chimney pots have a very limited distribution in England until the widespread introduction of chimney stacks in the later 16th century. The remaining pottery is consistent with a late medieval date with some residual earlier medieval sherds.

Context 3 is dated to the early 16th century by the Ryedale ware sherd whilst the remaining sherds indicate a late medieval date with some residual earlier material.

Context 402 produced only four post-Roman pottery sherds, three of which are of late 18th/19th-century date.

It is likely that the Romano-British activity on the site includes domestic occupation on a site with Romanized structure(s) with tile roof(s). This occupation probably started in the later 2nd century and continued to the end of the 4th century, although no undisturbed levels of the latest Roman period survive.

There is less evidence for post-Roman activity. This may be because the site itself lay some way from contemporary occupation (ie the finds may be present as a result of field manuring) or because deposits have not survived. The range of pottery found, however, suggests occupation from the pre-conquest period onwards.

Costing

There are three Roman pots which require illustration. It is estimated that this would cost £43.50 plus VAT (estimated at £14.50 per drawing).

Appendix

Action	Context	REFNO	Description	Trench	TSNO	Cname	Form	Nosh	NoV	Weight	Subfabric	Part	Use	Condition	class
	400					YATC1A	K	1		9		BS			ceramic
	400					YATB03	J	1		20		BS			ceramic
	400					YATB03	J	1		9		BS			ceramic
	400					YATB03	J/K	1		3		BS			ceramic
	400					YATB03	JC	2		26		R			ceramic
	1016		SPECIALIST POT NOT EXTRACT; PROB L3C			ZZZ									ceramic
	402					YATB03	JC	1		9		B			ceramic
	406		BASAL			YATB03	JC	2	1	39		BS			ceramic
	404	D2	RIM PROF NR COMP DISPLAY			YATC1A	KB4	6	1	312		PROF		ENCRUST	ceramic
	2		DIRTY WHT FAB			YATC1A	D?	1		3		BS		VABR	ceramic
	2		WHT FAB			YATC1A	K	1		12		BS			ceramic
	2		WHT FAB			YATC1A	K	1		2		BS			ceramic
	1					YATE01	F/J	1		6		BS			ceramic
	400					YATC1A	K	4		26		BS			ceramic
	3		FLANGE BKN			YATB03	DF	2	1	5		BS			ceramic
	400					YATC1A	KF	1		11		BS			ceramic
	1016		WHT FAB; UNUS NR NV GREY			YATC1A?	K	1		40		B			ceramic

Action	Context	REFNO	Description	Trench	TSNO	Cname	Form	Nosh	NoV	Weight	Subfabric	Part	Use	Condition	class
			WARE												
	400					YATC1B	K	1		2		BS			ceramic
	414		LTBN EFAB			YATC1B	K	1		2		BS			ceramic
	400					YATC02	K	1		12		BS		ABR	ceramic
	3					YATC02	CLSD	1		5		BS			ceramic
	3		BASAL			YATC02	K	1		7		BS			ceramic
	3		LFAB			YATC02	YB1	1		8		BS			ceramic
	2					YATC23	K	2		1		BS			ceramic
	3					YATC03	K	2	1	27		B		ABR	ceramic
	2					YATC03	K	1		4		BS			ceramic
	2					YATC03	K	1		2		BS			ceramic
	3					YATC1A	K	1		3		BS			ceramic
	400		LWR WALL			YATB14	DP	1		51		R			ceramic
	400		BS RED FAB PROB N AFRICAN;WIPED			YATAA0	AA	1		35		BS			ceramic
	3		LFAB			YATAP25	AP25	3	3	227		BS			ceramic
	400		LFAB			YATAP25	AP25	1		52		BS			ceramic
	400		BWL UNDER RIM			YATB01	JC	1		9		R			ceramic
	400		V FINE GRY NOT WHT			YATB11?	J	1		7		BS			ceramic

Action	Context	REFNO	Description	Trench	TSNO	Cname	Form	Nosh	NoV	Weight	Subfabric	Part	Use	Condition	class
	406		COARSE WHT FAB GREY SURFS			YATB11?	J/K	1		7		BS			ceramic
	1016		COARSER FAB			YATB11?	J/K	1		3		BS			ceramic
	400					YATB12	J	1		121		B		ABR	ceramic
	3					YATB12	B/D	1		13		B			ceramic
	3		COARSER FAB			YATB12	J	1		15		BS			ceramic
	3					YATB12	J	1		38		BS			ceramic
	3		TYP; NO HANDLES			YATB12	JL?	1		18		R			ceramic
	400					YATB03	J	1		16		B			ceramic
	1016	D1	GIRTH NEAR DP5			YATB12	DP	1		12		R			ceramic
	3		HIGH FIRED			YATB03	J	2		7		BS			ceramic
	2					YATB18?	JS	1		14		BS			ceramic
	400		FLAKE UNDECORATED			YATB02	D	2	1	105		B			ceramic
	400		LWR WALL			YATB02	DP7	1		37		R			ceramic
	1		GIRTH VABR INT			YATB03	B	1		12		R		ABR	ceramic
	400					YATB03	JC5	2		14		BS	SOOTEX		ceramic
	400					YATB03	JC	1		31		B	SOOTIN		ceramic
	2					YATB03	J	1		7		BS			ceramic
	2		BODY GROOVE			YATB03	J	1		6		BS			ceramic

Action	Context	REFNO	Description	Trench	TSNO	Cname	Form	Nosh	NoV	Weight	Subfabric	Part	Use	Condition	class
	2					YATB03	JC	1		1		BS			ceramic
	2					YATB03	JC?	3		8		BS			ceramic
	3					YATB03	D	1		3		BS			ceramic
	402		VFINE HORIZ BURNISH			YATB03	J	1		11		BS			ceramic
	400					YATB12	B/D	1		26		B			ceramic
	402		CP2B-3			ZDATE									ceramic
	3		FLANGE BKN			YATM01	MB?	1		24		R			ceramic
	1016		FE TRITS			YATM16	M	1		88		B		ENCRUST	ceramic
	3					YATO00	K	2	1	1		BS			ceramic
	3		LGE Q IN FINE FAB			YATP00	CLSD	1		8		BS		ABR	ceramic
	400		CF VER REGION UNGUENTARIA			YATP8?	YU	1		18		R			ceramic
	400		DEC			YATS03	37	1		7		BS			ceramic
	1016		RIM LWR WALL			YATS03	31	2	1	25		BS			ceramic
	400		LWR WALL; HIGH FIRED AS RHEINZABERN			YATS4R?	31ETC	1		47		R			ceramic
	2					YATW01	CLSD	1		4		BS			ceramic
	400					YATW01	F	2	2	24		BS			ceramic
	1		CP3			ZDATE									ceramic
	2		CP4B/POSTRO			ZDATE									ceramic

Action	Context	REFNO	Description	Trench	TSNO	Cname	Form	Nosh	NoV	Weight	Subfabric	Part	Use	Condition	class
	1					YATK02	J	1		4		BS			ceramic
	400	CP4A-B				ZDATE									ceramic
	2	C 10 SHS POSTRO				ZZZ									ceramic
	404	CPL2B-E3B				ZDATE									ceramic
	406	CP3B-4A				ZDATE									ceramic
	414	CP3				ZDATE									ceramic
	417	M2-3C				ZDATE									ceramic
	1016	CP4A				ZDATE									ceramic
	2	MOULDED EYE?				YATE01	YH?	1		4		BS			ceramic
	3	SPEC POT NOT EXTRACT;3 SHS POSTRO				ZZZ									ceramic
	400	BS SHLDR				YATB03	JC	2	1	21		B			ceramic
	404	UNUS UNDECORATED; NON POT				ZZZ									ceramic
	406	PROB L3C				ZZZ									ceramic
	414	NVCC ONLY				ZZZ									ceramic
	417	GREY ONLY				ZZZ									ceramic
	3	CP4B/POSTRO				ZDATE									ceramic
	1					YATG01	JI	1		7		BS			ceramic
	3					YATK1?		2	1	8		BS		VABR	ceramic

Action	Context	REFNO	Description	Trench	TSNO	Cname	Form	Nosh	NoV	Weight	Subfabric	Part	Use	Condition	class
	400		MIX;SPEC POT NOT EXTR;FRAGS STONE SHALE?			ZZZ									ceramic
	400					YATE01	J	2		29		BS			ceramic
	400					YATE01	LD	1		13		R			ceramic
	400		GREY INT			YATE02	J	1		14		BS			ceramic
	2					YATE08		1		8		BS			ceramic
	400	D3	GIRTH; BODY GROOVES			YATE08	B	1		29		R			ceramic
	400		UPPER WALL			YATE08	BF	1		35		R			ceramic
	3		FRAG			YATG00	JH3	1		24		R		VABR	ceramic
	3		VHIGH FIRED			YATG00		2		7		BS			ceramic
	400		BURNISH INT FLAKED EXT			YATG01	B/D	1		14		BS		ABR	ceramic
	417		LTBN EFAB			YATG01	J	1		5		BS	SOOTEX		ceramic
	2					YATG01	CLSD	3		44		BS			ceramic
	406		SHLDR			YATG01	JD3	1		30		R			ceramic
	400					YATK01	JH3?	1		17		BS			ceramic
	2					YATK01		2		22		BS			ceramic
	2					YATK01	JH3	1		17		R			ceramic
	406		RIMS S FLANGE GIRTH RIM GROOVE			YATG01	BF5	4		28		BS	SOOT		ceramic
	400					YATG02	J	2		19		BS			ceramic

Action	Context	REFNO	Description	Trench	TSNO	Cname	Form	Nosh	NoV	Weight	Subfabric	Part	Use	Condition	class
	3		FRAG FLANGE MISS			YATG01	DF	1		12		R			ceramic
	406					YATG01	J	1		6		B			ceramic
	402					YATG01	J/K	3	1	8		BS			ceramic
	402					YATG01	J	1		27		BS			ceramic
	400		STRING			YATG01	J	1		19		B			ceramic
	400					YATG01	J	8		117		BS			ceramic
	3					YATG01	J	1		5		BS			ceramic
	2		SHLDR			YATK01	JH3	1		87		R			ceramic
	2			1		BRANDSBY	JAR	1	1	14		B	SOOTED EXT		CERAMIC
	1			1		HUM	JAR	1	1	67		B	HEAVY SOOTING EXT; PATCHY WHITE DEP INT		CERAMIC
	1			1		HUM	JUG/JAR	3	3	55		BS			CERAMIC
	1			1		YG	JAR	1	1	7		BS	SOOT EXT		CERAMIC
	1			1		M/PMTIL	FLAT	2	1	62					CBM
	2			1		WALMGATE	JAR	1	1	5		BS	SOOTED EXT		CERAMIC
	2			1		HUM	JUG/JAR	1	1	49		B	KETTLE FUR INT		CERAMIC
	2			1		YG	JAR	7	7	27		BS			CERAMIC
	2			1		BEVO	JUG	1	1	8		BS			CERAMIC
	2			1		YG	JAR	1	1	7		B	SOOTED EXT		CERAMIC

Action	Context	REFNO	Description	Trench	TSNO	Cname	Form	Nosh	NoV	Weight	Subfabric	Part	Use	Condition	class
	2			1		YG	JAR	1	1	16		R			CERAMIC
	1			1		TORK	JAR	2	1	10		BS	SOOT EXT; WHITE DEP INT		CERAMIC
	3			1		YORK	JAR	1	1	8		BS	SOOTED EXT		CERAMIC
DR	2			1		LPMLOC	CHIMNEY	1	1	78		R			CERAMIC
	3			1		YG	JAR	2	2	25		BS	SOOTED EXT		CERAMIC
	2			1		BRANDSBY	JAR	1	1	6		BS	SOOTED EXT		CERAMIC
	2			2		CMW	JUG/JAR	2	2	24	RAWMARSH?	BS			CERAMIC
PH	2		DOG PAW PRINT	2		M/PMTIL	FLAT	1	1	165					CBM
	2			2		RTIL	TEG?	1	1	65					CBM
	2			2		RYEDALE	BOWL	1	1	8		BS	SOOT EXT		CERAMIC
	2			2		BRANDSBY	JUG	5	4	37		R;BS			CERAMIC
	2			2		HUM	JUG/JAR	5	4	80		B;BS			CERAMIC
	2			2		SCAR	JUG	1	1	4		BS			CERAMIC
	3			3		YG	JAR	2	2	19		BS			CERAMIC
	3			3		HUM	JUG/JAR	8	7	56		BS			CERAMIC
	3		HORIZONTAL LINES UNDER OLIVE GREEN GLAZE	3		HUM	JUG/JAR	1	1	2		BS			CERAMIC
	3		COLUMNS OF HORIZONTAL LINES UNDER AN OLIVE GREEN GLAZE	3		HUM	JUG/JAR	1	1	5		BS			CERAMIC

Action	Context	REFNO	Description	Trench	TSNO	Cname	Form	Nosh	NoV	Weight	Subfabric	Part	Use	Condition	class
	3			3		RYEDALE	BOWL	1	1	36		BS			CERAMIC
	3			3		BRANDSBY	JUG	12	11	63		BS			CERAMIC
	3			3		RTIL	TEG	1	1	181					CBM
	3	2		3		IRON	NAIL	1	1	12					IRON
DR	3			3		BRANDSBY	BOWL	1	1	74		R	SOOT EXT AND ON RIM		CERAMIC
	3			3		HILLAM	JAR	3	3	35		BS			CERAMIC
	3			3		BRANDSBY	JUG	1	1	1		BS	SOOT EXT		CERAMIC
	3			3		BRANDSBY	JUG	1	1	15		BS	SOOTING INT AND EXT		CERAMIC
	402			4		LPMLOC	FLP	1	1	8		BS			CERAMIC
	402			4		CREA	BOWL	1	1	11		BS			CERAMIC
	402			4		TPW	PLATE	1	1	4		B			CERAMIC
	4			4		TIL	CURV/IMBEX	1	1	110					CBM
	4			4		RTIL	IMBEX	1	1	47					CBM
	4			4		MORTAR		1	1	6					MORTAR
	402		SMALL HOLE	4		PIPECLAY	PIPE	1	1	1		STEM			CTP
SPECIALIST	404	3	DISTORTED BY HEAT	4		RGLAS	BOTTLE	29	1	15					RGLAS
	400			4		IRON	NAIL	1	1	3					IRON
	406	1		4		IRON	NAIL	2	1	11					IRON

Action	Context	REFNO	Description	Trench	TSNO	Cname	Form	Nosh	NoV	Weight	Subfabric	Part	Use	Condition	class
	402			4		HUM	JUG/JAR	1	1	21		BS			CERAMIC