

## **Assessment of the pottery from Dixon's Yard, Walmgate, York (OSA03 EV06)**

### ***Alan Vince***

One hundred and seventeen finds from the archaeological evaluation at Dixon's Yard, Walmgate (Site Code OSA03 EV06), were submitted for identification and assessment. Three sherds of Romano-British pottery were present. The remaining pottery was of late 9<sup>th</sup>-century or later date. A single fragment of post-medieval dark green bottle glass was present.

### **Description**

The finds were identified to class, common name and form and recorded in an Access database.

### **Pottery**

#### **Roman**

Three sherds of Romano-British pottery were submitted. These include a sherd of a Central Gaulish Samian ware bowl, Dr37 (YATS03; Fig 1), and a body sherd from a Nene Valley Colour-Coated folded beaker (YATC01). A handmade, sand-tempered jar sherd with sooting on the exterior is possibly of Romano-British date but might be of later date although it cannot be closely paralleled. A fourth sherd is most probably a recent flower pot sherd but might be a Roman amphora body sherd (it was found in Borehole 7 at a depth of 2.90m).



**Figure 1**

### Late 9<sup>th</sup> to mid 11<sup>th</sup>-century

A possible sherd of Anglo-Scandinavian York ware (YORKA) was found in context 1033. This ware was used in York from the late 9<sup>th</sup> until some time in the 10<sup>th</sup> century but overlaps in fabric with the later York Gritty ware so that a featureless body sherd is difficult to positively identify, especially in a clearly residual context.

A single sherd of Torksey ware (TORK) was recovered, from Borehole 2. This ware was produced from the later 9<sup>th</sup> to the mid 11<sup>th</sup> century at Torksey, Lincolnshire. However, the ware is uncommon in York until the second half of the 10<sup>th</sup> century.

### Late 11<sup>th</sup> to mid 12<sup>th</sup> century

Two sherds of Stamford ware (STAM) were found. One is an unglazed jar sherd and the other the base of a pitcher, with a spot of yellow glaze on the inside. Stamford ware was produced at Stamford, Lincolnshire, from the late 9<sup>th</sup> to the late 12<sup>th</sup> or early 13<sup>th</sup> century but the main period of use in York is the mid to late 11<sup>th</sup> century.

Three sherds of York Gritty ware (YG) were found. This has an off-white body and a coarse gravel temper, consisting mainly of fragments of lower Carboniferous sandstone. It was first used in the late 11<sup>th</sup> century but continued to be made into the early 13<sup>th</sup> century.

Two splash-glazed sherds were found (YSPL). One of these had a combed decoration over a white external slip. Such vessels were produced in the 12<sup>th</sup> century, mainly before the advent of York Glazed ware.

### Late 12<sup>th</sup> to mid 13<sup>th</sup> century

Fourteen sherds of late 12<sup>th</sup> to mid 13<sup>th</sup>-century date were recovered. Most of these were York Glazed ware (YORK) jugs and jars, with one bowl (four sherds from Borehole 4). This ware was probably produced in the Hambleton Hills. A single sherd of a Beverley ware jug was found (BEVO). This ware was produced at Beverley, East Yorkshire, from the middle of the 12<sup>th</sup> century through to the mid 14<sup>th</sup> century but most of the finds in York date to the late 12<sup>th</sup> to early 13<sup>th</sup> century.

### Later 13<sup>th</sup> to mid 14<sup>th</sup> century

Seven sherds of late 13<sup>th</sup> to mid 14<sup>th</sup>-century Brandsby-type ware were found (BRANDSBY). These sherds came from jugs and jars, including a vessel with a thumbled rim and mottled green glaze on the inside of the neck (Figs 2 and 3).



Figure 2

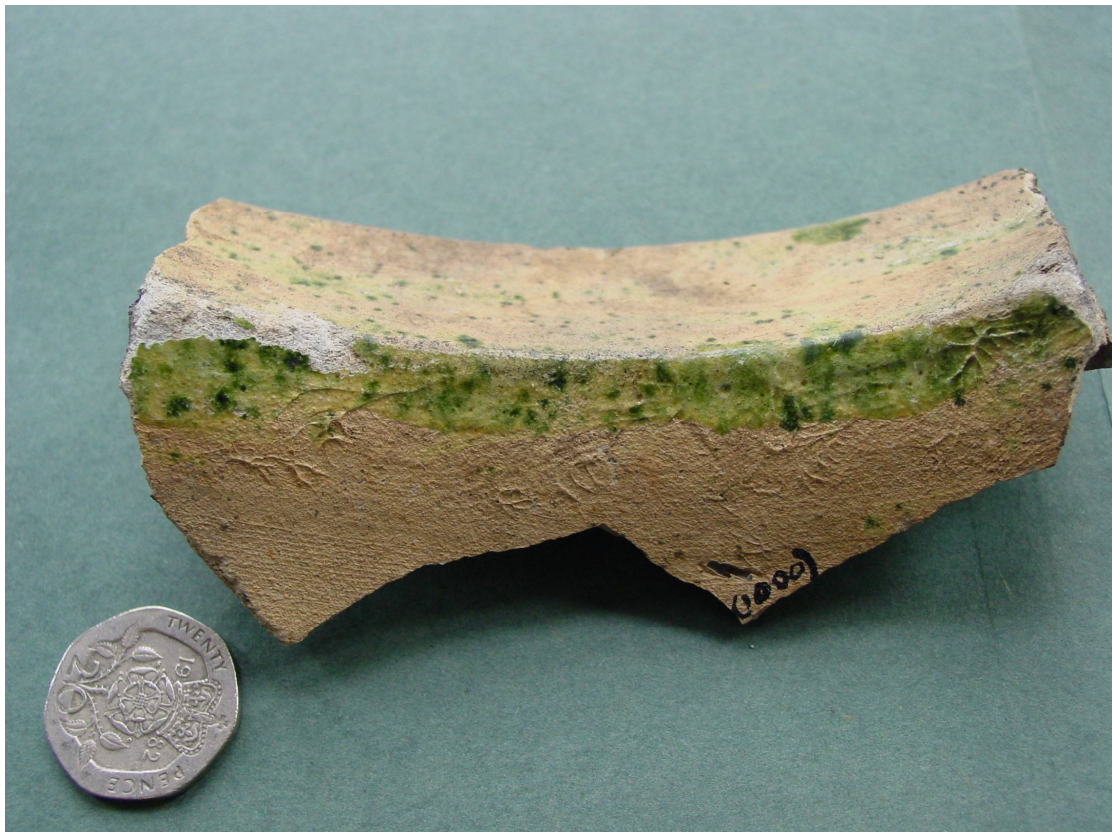


Figure 3

### Late 14<sup>th</sup> to 15<sup>th</sup> century

Thirty-two sherds of later 14<sup>th</sup> to 15<sup>th</sup> century date were recovered. Most of these were Humber ware, produced at a number of centres in the Humber wetlands south of York (such as West Cowick and Holme-upon-Spalding Moor). They include the base of an unglazed drinking jug of Holme-upon-Spalding Moor type and dating to the later 14<sup>th</sup> century. A single sherd of a Hambleton-type ware jug or jar was found (HAMBLETON). Finally, a single sherd of a possible Dutch Red Earthenware vessel was found (DUTR).

### Late 15<sup>th</sup> to 16<sup>th</sup> century

Three sherds of types which first occurred in the late 16<sup>th</sup> century were present. They are two sherds of Cistercian ware (CSTN) cups and a sherd of Raeren stoneware (RAER).

Two sherds of Humber ware with a dark brown or purple glaze were present. This glaze was introduced in the early 16<sup>th</sup> century.

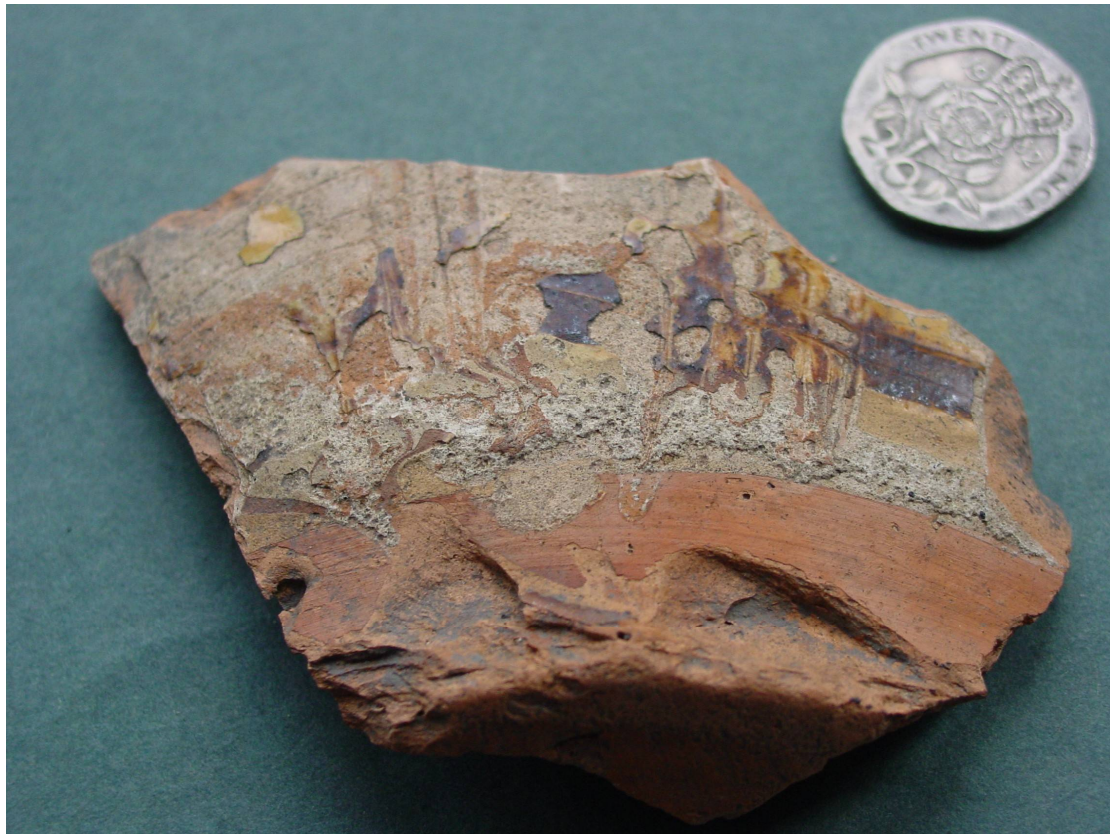
Four sherds of Ryedale ware (RYEDALE) were found. This ware was produced in the Hambleton hills area to the north of York.

### Late 16<sup>th</sup> to early 17<sup>th</sup> century

A sherd of a black-glazed jug (BL) was found. The fabric is a fine-textured red clay. A sherd of an unsourced glazed red earthenware (GRE) was found. Two sherds of late Humber ware were found (LHUM). The collection includes three sherds of Midlands Yellow ware (MY).

### Later 17<sup>th</sup> to 18<sup>th</sup> century

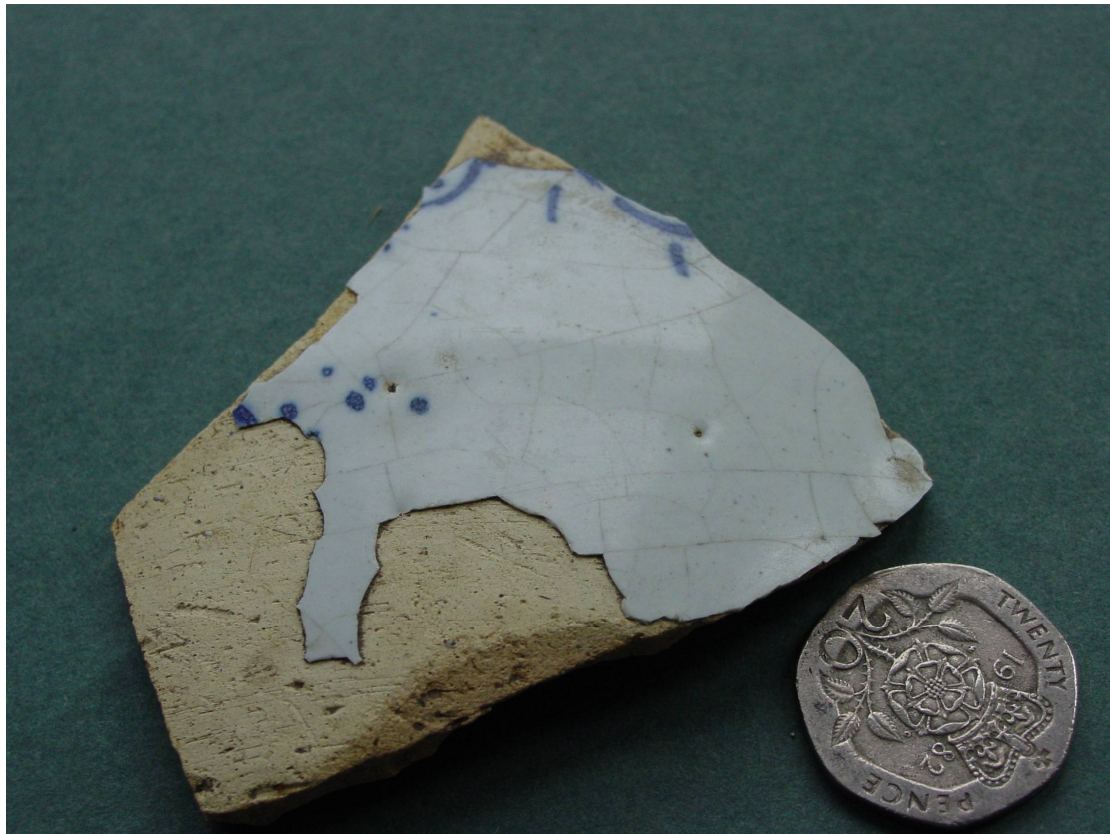
Eight sherds of very late 17<sup>th</sup> century or later date were found. They include two sherds of Nottingham stoneware (NOTS), a sherd of a Staffordshire mottled-glazed ware tankard and sherds of Staffordshire slipware posset pot. The collection also includes the base of a posset pot in an unsourced slipware (SLIP) which has a fine pink body and a white silty micaceous slip (Fig 00). The vessel is decorated with combed slip decoration.



**Figure 4**

#### Early to mid 18<sup>th</sup> century

Five sherds of tin glazed ware with characteristics which suggest an early to mid 18<sup>th</sup>-century date were found. Four of these sherds are from plates and the fifth is from a bowl decorated with a blue painted frieze around the outside of the rim (Fig 5). Two sherds of white salt-glazed stoneware were also present. The forms, a bowl and a plate, suggest a mid 18<sup>th</sup>-century date.



**Figure 5**

### Later 18<sup>th</sup> century and later

Nine sherds of later 18<sup>th</sup>, 19<sup>th</sup> or 20<sup>th</sup>-century date were recovered. Three of these are Creamware (CREA) vessels, including a cup base with a Wedgwood stamp. A complete marmalade jar in a whiteware (WHITE) was recovered. The base is moulded with the following inscription 'MALING AVERAGE 4OZ'. The Maling factory was located in Newcastle and between c.1850 and c.1880 produced containers for Keiller marmalade (Fig 6).

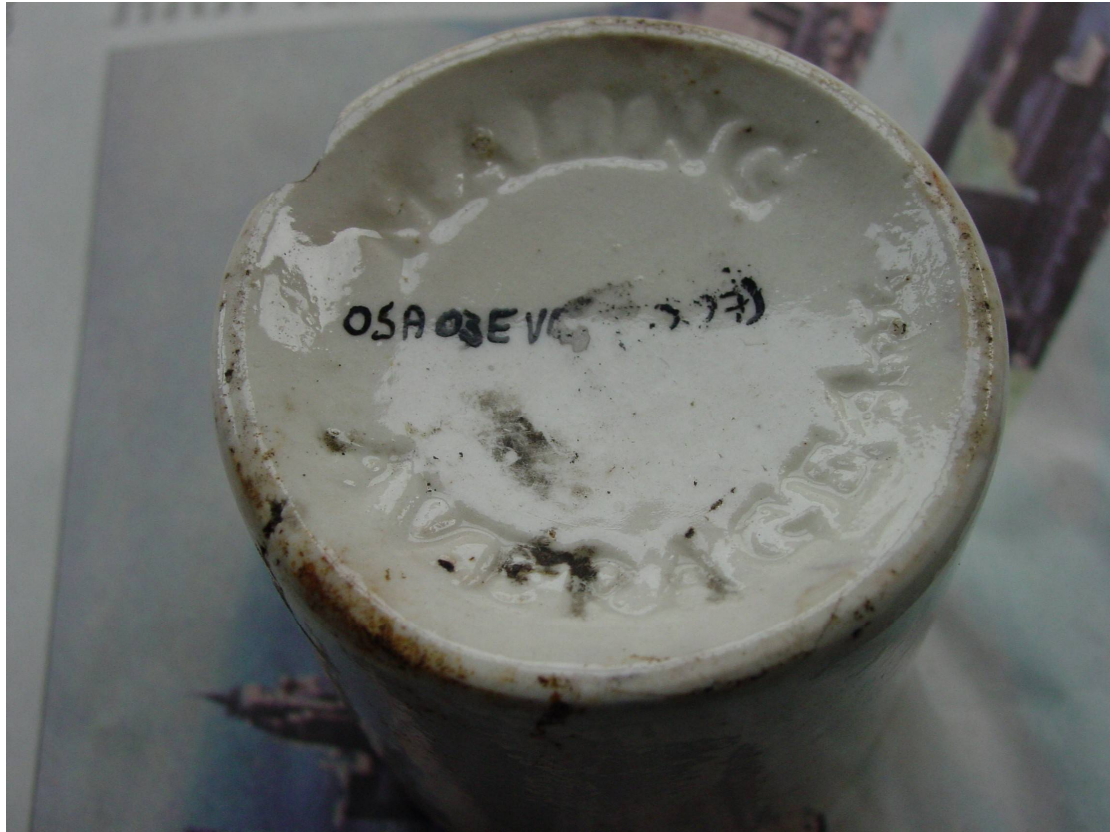


Figure 6

### **Glass**

A single fragment from a dark green bottle was found. The form of the bottle cannot be determined but it probably dates from the mid 17<sup>th</sup> to the mid 18<sup>th</sup> centuries.

### **Ceramic Building Material**

A fragment of a tin glazed wall tile was found. The tile was decorated in blue (Fig 7) and has no wear on the surface. The tile had a knife-trimmed bevelled edge and is relatively thick in comparison with late 17<sup>th</sup>/mid 18<sup>th</sup>-century tin-glazed wall tiles whose sides are moulded.



Figure 7

## Assessment

### Trench 1

Forty-one sherds were recovered from Trench 1 from nine contexts (Table 1). Since 18<sup>th</sup>-century wares were recovered from one of the earliest of these contexts (1023) the majority of the sherds are probably residual, ranging in date from the late 9<sup>th</sup>-century onwards.

Table 1

cname	1000	1007	1016	1021	1022	1023	1025	1033	1034	Grand Total
BEVO							1			1
BL								1		1
BRANDSBY	3									3
ENGS		1								1
HAMBLEDON						1				1
HUM	1		2	1		4				8
LHUM						2			1	3
MY						1				1
NOTS		1				1				2
RYEDALE						2				2



STMO					1					1
STSL								2	1	3
SWSG								1		1
TGW				1	3	1				5
WHITE	2									2
YG								1		1
YORK					3			1		4
YORKA									1	1
<b>Grand Total</b>	<b>4</b>	<b>4</b>	<b>2</b>	<b>2</b>	<b>18</b>	<b>1</b>	<b>3</b>	<b>5</b>	<b>2</b>	<b>41</b>

## Trench 2

Thirty-one sherds were recovered from three contexts in Trench 2 (Table 2). The earliest assemblage comes from context 2021 and is dated by Cistercian ware and glazed red earthenware to the 16<sup>th</sup> century. Later dumps, contexts 2020 and 2022, produced mixed assemblages which include a single probably 19<sup>th</sup>-century teapot sherd in a glazed refined redware (REFR) but which are otherwise of later medieval and 16<sup>th</sup>-century date.

**Table 2**

cname	2020	2021	2022	Grand Total
BRANDBY			4	4
CSTN		3		3
GRE		1		1
HUM	8	1	5	14
RAER	2			2
REFR			1	1
RYEDALE			1	1
STAM			1	1
YORK	1		2	3
YSPL	1			1
<b>Grand Total</b>	<b>12</b>	<b>5</b>	<b>14</b>	<b>31</b>

## Trench 3

Twenty-four sherds of pottery were recovered from eight contexts in Trench 3 (Table 3). The earliest context, 3025, is dated to the early 16<sup>th</sup> century or later by Ryedale ware. Contexts 3023 contains only residual pottery but 3021 contains Midlands Yellow ware which date its deposition to the later 16<sup>th</sup> to mid 17<sup>th</sup> centuries. Context 3019 only contains residual pottery and context 3011 is also dated by Midlands Yellow ware. Context 3013 probably dates to the 1680s or later, to judge by the slipware

posset pot. Context 3016 produced the tin-glazed ware wall tile, which is probably of mid to late 17<sup>th</sup> century date. Finally, context 3007 is dated to c.1765 or later by Creamware.

**Table 3**

cname	3025	3023	3021	3019	3011	3013	3016	3007	Grand Total
RYEDALE	1								1
YG		1	1						2
ROM		1							1
MY				1	1				2
STAM			1						1
CREA								1	1
DUTR?					1				1
HUM					6		3		9
SLIP						1			1
STSL								1	1
SWSG								1	1
YATS03					1				1
YORK				1				1	2
Grand Total	1	2	3	1	9	1	3	4	24

### Borehole 1

Three sherds were recovered from Borehole 1. A sherd of Creamware came from the lowest depth (2.00m) dating everything above that point to the late 18<sup>th</sup> century or later.

### Borehole 2

A sherd of Torksey ware came from a depth of 1.50m in Borehole 2, dating this silt to the later 10<sup>th</sup> century or later.

### Borehole 3

A single sherd of Humber ware came from a depth of 4.10m in Borehole 3, dating everything above this to the later 14<sup>th</sup> century or later.

### Borehole 4

Sherds of York Glazed ware and York Gritty ware from a depth of 1.00m in Borehole 4 date everything at this level and above to the later 12<sup>th</sup> century or later.

### Borehole 6

A single sherd of Humber ware from a depth of 0.80m in Borehole 6 dates everything from this depth and higher to the later 14<sup>th</sup> century or later.

### **Borehole 7**

A sherd of possible early modern flower pot or a Roman amphora sherd was recovered from a depth of 2.90m in Borehole 7. A sherd of early 12<sup>th</sup> century or later splashed ware was found at a depth of 1.40m and a sherd of Humber ware was recovered from a depth of 0.70m.

### **Borehole 8**

A sherd of 3<sup>rd</sup>-century Roman pottery was recovered from a depth of 1.30m in Borehole 8 and a sherd of an unglazed Stamford ware was recovered from a depth of 1.20m.

### **Conclusion**

All of the medieval pottery recovered from Trenches 1 to 3 is residual in post-medieval contexts. The strata in Trenches 2 and 3 date to the 16<sup>th</sup> and 17<sup>th</sup> centuries and later and those in Trench 1 are slightly later. The presence of conquest-period pottery in Boreholes 1 and 8 suggests that the silts in these trenches may be close in date to the creation of the Kings Fishpool whereas the material from boreholes 2, 3, 4, 6 and 7 is all later.

The collection as a whole includes five sherds of conquest period or earlier date but since these are either from river silts or redeposited in much later levels it is difficult to say where the occupation of this period was located. There is a scatter of material of slightly later date and a sudden increase in the quantity of material of later 12<sup>th</sup> to mid 13<sup>th</sup>-century date. This may suggest that occupation in the area increased in intensity during this period although again none of the finds are stratified in occupation deposits, coming instead from river silts and as residual sherds in post-medieval deposits.

None of the material recovered requires any further treatment or recording nor would any at this stage repay further study.

Appendix: List of submitted finds

Context	trench	class	cname	subfabric	Form	Nosh	NoV	Action	Description	Part Use	Condition
1000	Trench 1	CERAMIC	BRANDSBY		JAR	3	1		THUMBED COLLAR RIM;CUGL ON INSIDE OF RIM	BS	
1000	Trench 1	CERAMIC	HUM		BOWL	1	1			BS	
1007	Trench 1	CERAMIC	NOTS		BOT	1	1		BRISTOL GLAZED	BS	
1007	Trench 1	CERAMIC	ENGS		BLACKLEADING BOTTLE	1	1		BRISTOL GLAZED	BS	
1007	Trench 1	CERAMIC	WHITE		JAR	1	1		MARKED ON BASE 'MALING AVERAGE 4OZ';C.1850-1880?	BS	
1007	Trench 1	CERAMIC	WHITE		CUP	1	1			R	
1016	Trench 1	CERAMIC	HUM		JUG	1	1		PURPLE GL EXT	BS	
1016	Trench 1	CERAMIC	HUM		JAR	1	1			BS	WHITE DEPO INT OVER GLAZE
102	Borehole 1	CERAMIC	YG		JAR	1	1			BS	
102	Borehole 1	CERAMIC	CREA		PLATE	1	1			BS	
1021	Trench 1	CERAMIC	HUM		BOWL	1	1			BS	

Context	trench	class	cname	subfabric	Form	Nosh	NoV	Action	Description	Part Use	Condition
1021	Trench 1	CERAMIC	TGW		PLATE	1	1		FOOTRING;18THC? FLORAL PATTERN	B	BURNT AFTER BREAKAGE
1022	Trench 1	CERAMIC	YORK		JUG	2	2		CUGL	BS	
1022	Trench 1	CERAMIC	YORK		JAR	1	1			BS SOOTED EXT	
1022	Trench 1	CERAMIC	HAMBLEDON		JUG/JAR	1	1		CUGL INT AND EXT	BS	
1022	Trench 1	CERAMIC	HUM		BOWL	1	1			BS	
1022	Trench 1	CERAMIC	HUM			1	1			BS	
1022	Trench 1	CERAMIC	HUM		JUG	2	2		PURPLE GL	BS	
1022	Trench 1	CERAMIC	RYEDAILE		BOWL	1	1			BS	
1022	Trench 1	CERAMIC	RYEDAILE			1	1			BS	
1022	Trench 1	CERAMIC	LHUM		BOWL	1	1			BS	
1022	Trench 1	CERAMIC	MY			1	1			BS	
1022	Trench 1	CERAMIC	NOTS		TANK	1	1			BS	
1022	Trench 1	PMGL	PMGL	DK GREEN	BOT	1	1		NECK SHERD	BS	
1022	Trench 1	CERAMIC	STMO		TANK	1	1			BS	
1022	Trench 1	CERAMIC	TGW		PLATE	1	1			BS	
1022	Trench 1	CERAMIC	TGW		PLATE	2	2		BOTH WITH A LIGHT BLUE TINGE TO THE GLAZE AND DELICATE 18THC STYLE BLUE DEC	BS	
1022	Trench 1	CERAMIC	LHUM	OXID	BOWL	1	1			BS WHITE DEPOSIT	

Context	trench	class	cname	subfabric	Form	Nosh	NoV	Action	Description	Part Use	Condition
										OVER INT GL	
1023	Trench 1	CERAMIC	TGW		BOWL	1	1		LT BLUE TINGE TO GLAZE;BLUE DEC LOOKS 18TH C	BS	
1025	Trench 1	CERAMIC	YG		JAR	1	1			BS	
1025	Trench 1	CERAMIC	BEVO		JUG	1	1		BASE SHERD UNGLAZED	BS	
1025	Trench 1	CBM	MTIL		RIDGE?	1	1			BS	SPALLED
1025	Trench 1	CERAMIC	YORK		JAR	1	1			BS SOOTED EXT	
103	Borehole	CERAMIC	CREA 1		PLATE	2	1			R	ORGANIC BLACKENING
1033	Trench 1	CERAMIC	YORKA		JAR	1	1			BS SOOTED EXT	
1033	Trench 1	CBM	MTIL		FLAT	1	1			BS	
1033	Trench 1	CERAMIC	BL	FINE RED CF WRENTHORPE	JUG	1	1			BS	
1033	Trench 1	CERAMIC	STSL		POSS	2	2			BS	
1033	Trench 1	CERAMIC	SWSG		BOWL	1	1		TINY SCRAP	BS	
1034	Trench 1	CERAMIC	LHUM	OXID	BOWL	1	1		INT BROWN GL	R	
1034	Trench 1	CERAMIC	STSL		POSS	1	1			B SOOT ON BASE	
2020	Trench 2	CERAMIC	YSPL		JUG	1	1			BS	
2020	Trench 2	CERAMIC	YORK		JUG	1	1		CUGL	BS	

Context	trench	class	cname	subfabric	Form	Nosh	NoV	Action	Description	Part Use	Condition
2020	Trench 2	CERAMIC	HUM		JUG/JAR	3	3			BS	
2020	Trench 2	CERAMIC	HUM		JUG/JAR	3	1			B	
2020	Trench 2	CERAMIC	RAER		DJ	2	1			BS	
2020	Trench 2	CERAMIC	HUM		JUG/JAR	2	1		PURPLE GL	BS	
2021	Trench 2	CERAMIC	HUM			1	1			BS	
2021	Trench 2	CERAMIC	CSTN		CUP	1	1			BS	
2021	Trench 2	CERAMIC	CSTN		CUP	2	2			R	
2021	Trench 2	CERAMIC	GRE		JAR	1	1			BS	
2022	Trench 2	CERAMIC	STAM		JAR	1	1		UNGLAZED	BS	SOOTED EXT
2022	Trench 2	CERAMIC	YORK		JUG/JAR	1	1		GLAZE SPOT ON BASE	BS	
2022	Trench 2	CERAMIC	YORK		JAR	1	1			BS	SOOTED EXT
2022	Trench 2	CERAMIC	BRANDBY		JUG	1	1		PLAIN GL	BS	
2022	Trench 2	CERAMIC	BRANDBY		JUG	1	1		PLAIN GL	BS	
2022	Trench 2	CERAMIC	BRANDBY		JUG	1	1		IRON-RICH PELLETS IN HORIZ BAND;PLAIN GL	BS	
2022	Trench 2	CERAMIC	BRANDBY		JAR	1	1			BS	
2022	Trench 2	CERAMIC	HUM		JUG/JAR	5	5			BS	
2022	Trench 2	CERAMIC	RYEDALE		CHP?	1	1		INT AND EXT GL	BS	SPALLED AND DEPO INT

Context	trench	class	cname	subfabric	Form	Nosh	NoV	Action	Description	Part Use	Condition
2022	Trench 2	CERAMIC	REFR		TPOT?	1	1		GLOSSY BROWN GL INT AND EXT	BS	
203	Borehole 2	CERAMIC	TORK		JAR	1	1			BS SOOTED EXT	
3007	Trench 3	CERAMIC	YORK		JAR	1	1			BS	
3007	Trench 3	CERAMIC	STSL		POSS	1	1			R	
3007	Trench 3	CERAMIC	CREA		CUP	1	1		STAMPED '...WOOD' ON BASE BELOW 'Λ' MARK	B	
3007	Trench 3	CERAMIC	SWSG		PLATE	1	1			BS	
3011	Trench 3	CERAMIC	YATS03		BOWL	1	1			BS	
3011	Trench 3	CERAMIC	DUTR?		CAUL	1	1		INT AND EXT GL	BS	
3011	Trench 3	CERAMIC	HUM		JAR	1	1			BS WHITE DEPO INT OVER GL	
3011	Trench 3	CERAMIC	HUM		JAR	1	1		LID-SEATED RIM;CUGL	R	
3011	Trench 3	CERAMIC	HUM	OXID	BOWL	3	1		FLANGED RIM	R	
3011	Trench 3	CERAMIC	HUM		BOWL	1	1		HORIZ GROOVES AROUND NECK;CYLINDRICAL THIN-WALLED	R	
3011	Trench 3	CERAMIC	MY		BOWL	1	1			BS	



Context	trench	class	cname	subfabric	Form	Nosh	NoV	Action	Description	Part Use	Condition
3013	Trench 3	CERAMIC	SLIP	FINE PINK CM RED BODY;WHITE SLIP IS SILTY AND MICACEOUS	POSS	1	1		COMBED SLIP EXT;WHITE SLIPPED INT	B	
3016	Trench 3	CERAMIC	HUM		JUG/JAR	1	1		RING AND DOT STAMPED;BROWN GL INT AND EXT	BS	
3016	Trench 3	CERAMIC	HUM		JAR	2	1	PH	INT AND EXT BROWN GL	R	
3016	Trench 3	CERAMIC	TGW		WALT/FLOOR	1	1		BLUE PAINTED DEC;ABSOLUTELY NO WEAR SO PROBABLY WALT	BS	
3019	Trench 3	CERAMIC	YORK		JUG	1	1		APPLIED STRIP;CUGL	BS	
3021	Trench 3	CERAMIC	STAM		PTCH	1	1		KT BASE;YELLOW GLAZE SPOT INT	BS	
3021	Trench 3	CERAMIC	YG		JAR	1	1			BS	
3021	Trench 3	CERAMIC	MY		BOWL	1	1		WIRE-CUT BASE (TWISTED WIRE)	B	
3023	Trench 3	CERAMIC	ROM	RQ >2.0MM;MICACEOUS BODY	JAR	1	1		HM	BS	SOOTED EXT;KETTLE FUR INT
3023	Trench 3	CERAMIC	YG	RED BODY;WHITISH SURFACES	JAR	1	1			BS	
3025	Trench 3	CERAMIC	RYEDALE		BOWL	1	1		CUGL INT AND EXT	BS	

Context	trench	class	cname	subfabric	Form	Nosh	NoV	Action	Description	Part Use	Condition
305		Borehole	CERAMIC HUM 3		DJ	1	1		FLAT BAL BASE;UNGLAZED HOLME-UPON- SPALDING MOOR TYPE	B	
405		Borehole	CERAMIC YORK 4		BOWL	4	1		CUGL INT AND EXT;FLANGED BOWL	R	
407		Borehole	CERAMIC YG 4	OVERFIRED	JAR	1	1		KT BASE	B	SOOTED EXT
604		Borehole	CERAMIC HUM 6		JUG/JAR	1	1		SMALL SCRAP SO IDBS DUBIOUS		
706		Borehole	CERAMIC YSPL 7		JUG	1	1		COMBED DEC OVER BS WHITE SLIP		
709		Borehole	CERAMIC HUM 7		JUG	1	1		SALT-SURFACED	BS	
710		Borehole	CERAMIC LPMLOC 7		FLP	1	1		JUST POSSIBLY ROMAN BUT V UNLIKELY	BS	
808		Borehole	CERAMIC STAM 8		JAR	1	1		UNGLAZED	BS	SOOTED EXT
812		Borehole	CERAMIC YATC01 8		FOLDED BEAKER	1	1			BS	