

Elloughton, East Yorkshire (OSA02 EX08)

Non-Ceramic Finds

Alan Vince

Catalogue

Ceramic

A fragment of fired clay from context 1071 (SF14), broken into four pieces is possibly a piece of hearth lining. It has no curvature and only one good face, which is more heavily vitrified than the other, rough face. An x-ray (Plate 3) showed no signs of metal. Alternatively, the object could be an accidentally burnt fragment of prehistoric or early Roman pottery.

Glass

A fragment of light blue window glass (SF8) was recovered from context 1077. The fragment is probably of mid Roman date and would have been used in a Romanised structure. Like the fragments of Roman tile from this site the glass was probably scavenged from a nearby villa, either for re-use or simply as a curiosity.

Iron

Nine iron objects were recovered. All were x-rayed and this revealed that six of the objects were nails, made with a square-sectioned shank, tapering to a point, and a subrectangular or oval head. These nails varied in size but are mostly incomplete which makes any comparison difficult.

The other objects are a washer from context 1214 (SF6), an unidentified object from context 1216 (SF4) and a collection of hobnails from a shoe from context 1077 (SF9).

The washer, SF6, is trapezoidal in shape and x-ray reveals a central circular hole (X-ray Plate 3).

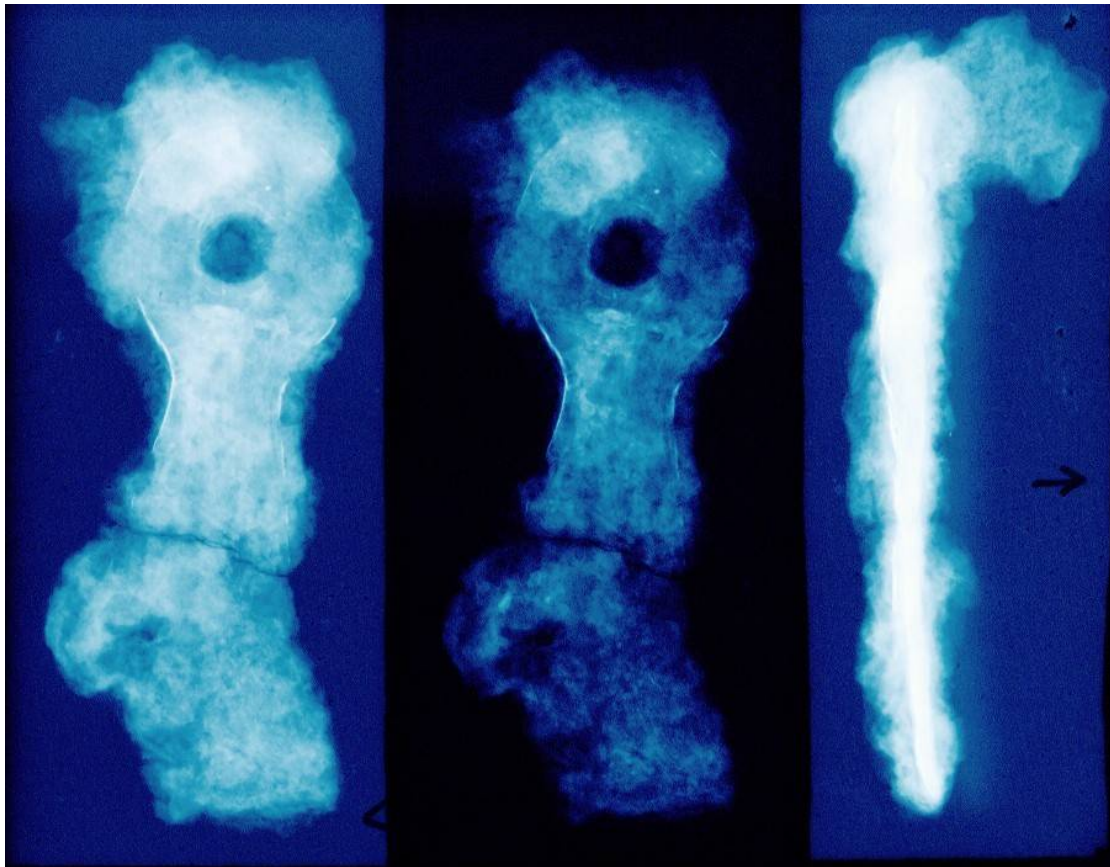


Figure 1 Iron Object, SF4

The unidentified object, SF4, was fashioned from a thin sheet of iron and has a circular terminal with a central hole. The other end of the object is indistinct, even in x-ray. The object has non-ferrous plating at the terminal end. It is possible that investigative cleaning would reveal more of the shape and would allow a spot test to identify the plating, although it is almost certainly a tin alloy.

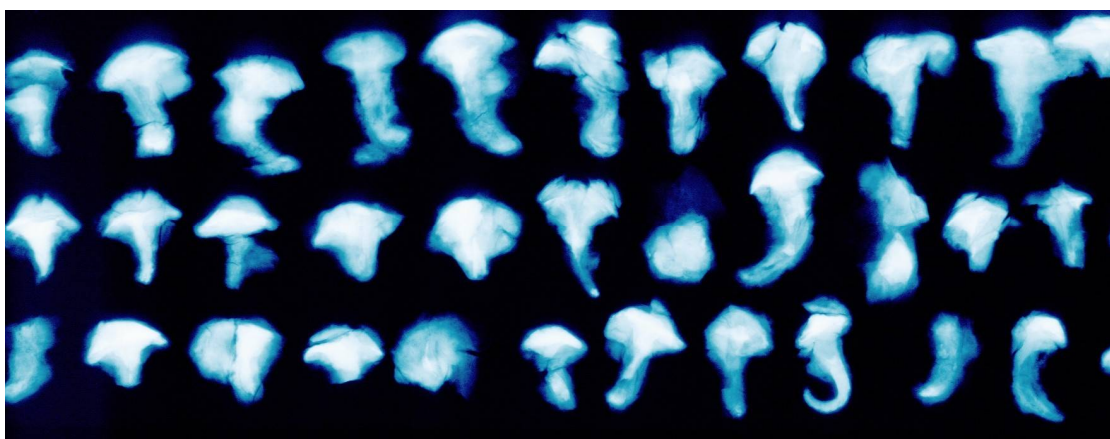


Figure 2 Iron hobnails, SF9

The shoe remains, SF9, consist of 44 hobnails. In x-ray these are shown to be dome-headed tails with their shanks bent over, and sometimes turned back on themselves, to secure them to the leather. All of the nails are of similar size and shape.

Shell

Oyster shells were recovered from two contexts, 1075 (7 shells) and 1079 (1 shell).

Stone

Flint

A flint flake was recovered from context 1220 (SF15) and a tool was recovered from an unstratified context (SF2). The latter is complete and unpatinated and requires identification and study by a lithics specialist.

Roof Slates

Two fragments of micaceous sandstone may be stone roof tiles (SF11, context 1077 and an unregistered fragment from context 1166. Such sandstones do not outcrop in the Elloughton area and fragments suitable for use as roof tiles would have been obtained by quarrying.

Lava Querns

Two collections of lava fragments were recovered, from context 1210 (SF18) and unstratified (SF16). Both consist of featureless lumps and indicate the presence of one or more Mayen lava querns on the site.

Dating

Most of these finds come from deposits which can be dated roughly by pottery. Of these, the ceramic object is the earliest, coming from a pre- or early Roman deposit. This would probably favour the interpretation of the object being over-fired pottery. If so, the flatness of the sherd could be due to its coming from the base of a jar.

The remaining objects either come from late or very late Roman deposits or from undated deposits. The late/very late Roman deposits produced the flint flake, the window glass, three nails, the shoe and the unidentified iron object. In addition, the oyster shell and one of the micaceous sandstone roof tiles came from these levels.

Deposits undated by pottery produced an iron nail (context 1181), a micaceous sandstone roof tile (context 1166) and one of the lava collections (context 1210). On the basis of these finds, it is likely that all three contexts are of Roman date.

Finally, the flint tool, an iron nail, the other collection of lava fragments and a piece of charred wood were unstratified. Of these, the lava fragments are likely to be Roman, the flint is likely to be early prehistoric and the nail and wood are undatable.

Discussion

The Elloughton site produced a small and unremarkable collection of finds, which is consistent with its interpretation as part of an agricultural settlement at the foot of the Wolds. The site did, however, produced evidence for an imported quern and for the presence of debris from Romanised structures – window glass and stone roof tiles.

Appendix: List of Registered and other non-ceramic finds

Context	class	cname	subfabric	Form	Nosh	NoV	Description	REFNO	L	B	TH	Condition
1071	ceramic				4	1	MIGHT BE HEARTH LINING;VITRIFIED ON ONE SIDE;SHERD HAS NO CURVATURE; XRAY SHOWS NO SIGN OF METAL;XRAY OSA02 PLATE 3	14				
1077	glass	glass	light blue	window	1	1	Roman?	8				
1107	IRON	IRON		NAIL	1	1	OVAL HEAD 16MM BY 9MM	17	28			
1167	iron	iron		NAIL	1	1	XRAY OSA02 PLATE 4;HEAD AND PART OF SHANK;HEAD 12MM WIDE	3	13			
1077	iron	iron		shoe	1	1	44 DOME-HEADED NAILS, SEVERAL BENT OVER AT TIP;ALL ONE SIZE WITH HEADS 2-8MM DIAMETER;LEATHER 5-7MM THICK	9				
1211	iron	iron		NAIL	1	1	XRAY OSA02 PLATE 3;TIP OF SHAFT;SQUARE CROSS-SECTION	5	275	5		
1216	iron	iron		object	1	1	XRAY OSA02 PLATE 3;NFP;FLAT OBJECT WITH CIRCULAR END WITH CIRCULAR HOLE;SPECIALIST	4				

REQUIRED										
1075	shell	shell	oyster		7	1				
1079	shell	shell	oyster		1	1				
1077	STONE	stone	micaceous roofer? sandstone		1	1		11		burnt
1214	iron	iron		WASHER	1	1	XRAY OSA02 PLATE 3;TRAPEZOIDAL WASHER WITH CENTRAL CIRCULAR HOLE	6	27254	COMPLETE
1214	iron	iron		NAIL	2	1	XRAY OSA02 PLATE 3; SHAFT FRAGMENTS	7		
1181	iron	iron		NAIL	1	1	XRAY OSA02 PLATE 4;TIP OF SHANK	13	28	BROKEN
1166	STONE	stone	micaceous roofer? sandstone		1	1		12		burnt
1210	STONE	stone	lava		6	1		18		featureless lumps
SUBSOIL???	IRON	IRON		NAIL	1	1	XRAY OSA02 PLATE 3;SMALL SUB-RECTANGULAR HEAD	19	85	COMPLETE
us	STONE	stone	lava		1	1		16		featureless fragments
