

## Post-medieval Brick from Blakeney, Norfolk

### *Alan Vince and Kate Steane*

The excavations being undertaken by LAS at Blakeney, Norfolk in 2004/5 have produced a large quantity of brick fragments. A sample of this brick has been examined by the authors at Lincoln and a type fabric series created. To date, this consists of five fabrics, coded B1 to B5. Three hundred and thirty one fragments of brick with one or more dimension were recorded from 20 different contexts (Table 1).

Context	B1	B2	B3	B4	B5	Grand Total
1300		3				3
1301		4				4
1302		2	1	1		4
1303	1	3		1		5
1304	2	5				7
1308			2			2
1317	2	12	1		1	16
1325	1					1
1329	5	134	3		4	146
1388		9			17	26
1389	1	1				2
1391	3	29	3	2	6	43
1392	1	9				10
1397		3				3
1399			1		1	2
1410	1	11	2			14
1419		15		1	1	17
1463		22				22
1667		1				1
1716					2	2
<b>Grand Total</b>	<b>17</b>	<b>263</b>	<b>13</b>	<b>5</b>	<b>32</b>	<b>330</b>

In order to assess whether the collection of further data is likely to be worthwhile, an analysis of the data collected so far has been carried out.

## Fabrics

The most common fabric found in the bricks is B2, forming 79% of all the recorded brick. This is followed by fabric B5 (10%), B1 (5%), B3 (4%) and B4 (2%). Clearly, the proportion of one brick fabric to another might be expected to change with time and therefore should be recorded for all sampled contexts.

## Dimensions

### Thickness

Three hundred and thirty bricks with measurable thicknesses have been recorded (Table 1). These do appear to show a correlation with fabric, as shown in Fig 1. The B2 bricks appear to have been made in several thicknesses: 41-44mm; 44-49mm; 49-53mm; 53-57mm and over 57mm. The other fabrics, although represented by too few samples for a reliable study, appear to show preferred thicknesses too: The B3, B4 and B5 bricks appear to have been produced mainly as 44-49mm thick bricks whereas the B1 bricks are mostly of the 49-53mm group. However, the mean thicknesses of the present sample are indistinguishable: B1 – 51mm; B2 – 49mm; B3 – 50mm; B4 – 48mm; B5 – 48mm.

*Table 1*

TH	B1	B2	B3	B4	B5	Grand Total
40		2				2
41		1	1			2
42		5		1		6
43		5				5
44		2				2
45	1	10			4	15
46	1	27	1	1	4	34
47		27	3		6	36
48	3	28	2		7	40
49		26	1		3	30
50	1	36		1	3	41
51	4	32	2		2	40
52	2	21		2		25
53	1	12			1	14
54		8				8
55	2	8	1			11
56		6				6
57	2	2			1	5
59		3				3

60			1		1
62	2	1		1	4
<b>Grand Total</b>	<b>17</b>	<b>263</b>	<b>13</b>	<b>5</b>	<b>32</b>

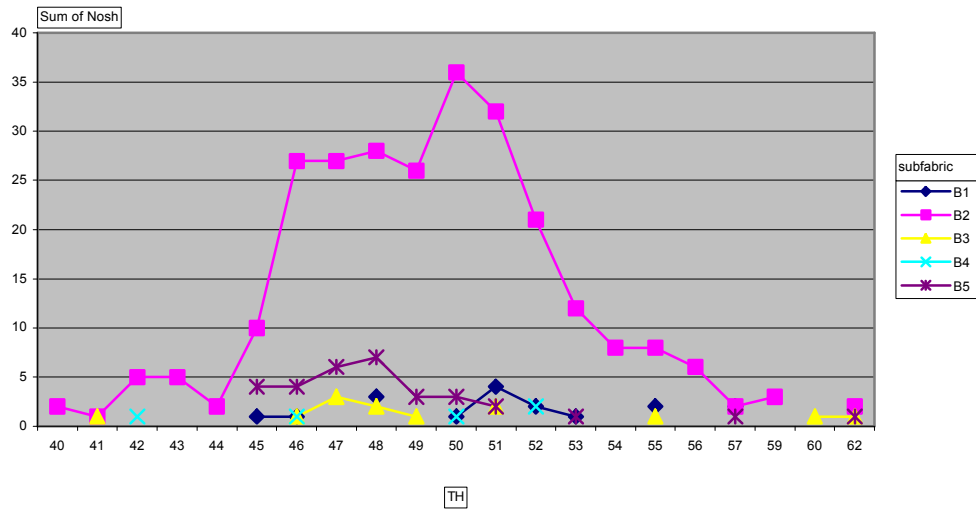


Figure 1

**Width**

Only 27 fragments with measurable widths have been recorded (Table 2). Even for the most common fabric, this amounts to only 18 bricks. To obtain even a reliable mean width of the bricks of each fabric requires further samples, of all fabrics. In addition, one might expect changes in brick sizes through time, but within the same fabric groups. To identify and study these will require samples of stratified bricks with measurable widths.

Table 2

B	B1	B2	B3	B4	Grand Total
102		1		1	1
108		1		1	1
109		2		2	2
110		1		1	1
111		2		2	2
112		1		1	1
113			2	2	2
115	1	2		3	3
117		2		2	2

118	1		1	2
119		1		1
120		1		1
122	1			1
123	1	2		3
124	1	1		2
126		1		1
129			1	1
Grand Total	5	18	3	27

### Length

At present, no complete brick lengths have been recorded. It is recommended that all complete bricks be retained.

### Width-Thickness Ratio

Fig 2 shows a plot of thickness against width for the recorded bricks with those of these dimensions, a total of 27 bricks. This plot shows no clear correlation between width, thickness or fabric. However, the B1 bricks, only 5 of which had measureable dimensions, appear in the figure to have a higher mean width although when the mean width/thickness ratios of the different brick fabrics are calculated this does not appear to be the case (Table 3).

*Table 3*

Data	B1	B2	B3	B4	Grand Total
Number of examples	5.00	20.00	3.00	1.00	29.00
Average of w:th	2.38	2.28	2.45	2.27	2.31

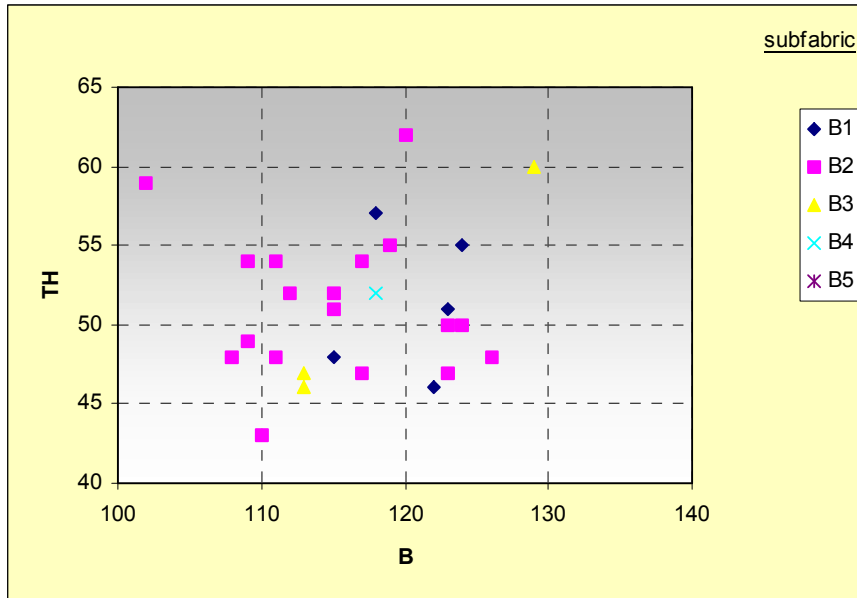


Figure 2

### Recommendations

The only measure for the Blakeney bricks which we appear to have a reasonable-sized sample of at present is the thickness of B2 bricks. Therefore, we should continue to record for discard or retain for future recording, all bricks of other fabrics with measurable thicknesses. For widths and lengths, there are so few measured examples in our present record that more need to be recorded, for every fabric.