

## **The Finds from North Baileygate, Pontefract, West Yorkshire (OSA06 EV07)**

***Alan Vince and Kate Steane, with illustrations by Dave Watt***

An archaeological evaluation at North Baileygate, Pontefract, undertaken by On-Site Archaeology Ltd (Site Code OSA06 EV07) produced a range of finds, mostly pottery and ceramic building material ranging in date from the medieval period to the 19<sup>th</sup> century, together with two sherds of Roman pottery.

### **Description**

The finds are described in alphabetical order.

### **Ceramic Building Material**

Fifty-one fragments of brick and tile were recorded. Eight were too small to identify; 19 were bricks; 15 were flat roof tile fragments and 9 were pantiles.

### **Clay Tobacco Pipes**

Fourteen fragments of clay tobacco pipe were recorded. All were stems, of which four have stem bore diameters consistent with a later 17<sup>th</sup> or 18<sup>th</sup>-century date and the remainder of which have stem bore diameters of late 18<sup>th</sup> or 19<sup>th</sup>-century character. One of the latter had faint traces of a stem mark.

### **Copper Alloy**

Two fragments of sheet metal were recorded. Both come from late medieval deposits.

The first (SF7) is a rectangular strip, 35mm wide and 16mm long. One end is original and the two corners are chamfered. The other is snapped. The object is undecorated.

The second (SF1) is broken on all sides. The surviving fragment is a thin strip 30mm by 7mm with a slightly convex cross-section. It is bent at right angles along the two long edges and the surface is decorated with diagonal grooves. At one end the sheet appears to have been deliberately raised up, but is broken at this point.

### **Coke**

Three fragments of coke were recovered.

### **Glass**

Six fragments of glass were recovered. None were closely datable because of their small size. They include fragments of a pharmaceutical phial of 17<sup>th</sup>-century date, three fragments

The Alan Vince Archaeology Consultancy, 25 West Parade, Lincoln, LN1 1NW

<http://www.postex.demon.co.uk/index.html>

A copy of this report is archived online at

<http://www.avac.uklinux.net/potcat/pdfs/avac2006103.pdf>

of window glass, probably of similar date; a fragment of a dark green bottle of mid 17<sup>th</sup>-century or later date.

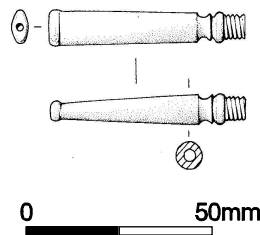
### Iron

Seven fragments of iron were recorded. Five are fragments of nails, three of which come from a late medieval buried soil, 2104, one from a 16<sup>th</sup> or 17<sup>th</sup>-century deposit (2126) and the last unstratified.

Two fragments of an awl were recovered from the top fill of ditch 2094. The fragments, SF10 and SF11, form an object 243mm long with a rectangular cross section. At the centre, where it is thickest, the cross section is 8mm by 12mm. At the pointed end it tapers to an almost circular cross sectional point and at the handle end it forms a rectangular tang, 4mm by 8mm. Notches are visible in the xray at the junction of the handle and awl, giving a point 110mm long and a handle 134mm long.

### Ivory

The mouthpiece of a tobacco pipe with a screw fitting was recorded (Fig 1). The pipe itself is likely to have been made from wood or meerschaum. Such pipes were uncommon before the mid 19<sup>th</sup> century (A Peacey, pers comm).



*Figure 1*

### Lead

A single fragment of lead window came was recorded. It is a strip of milled came 140mm long and 9.5mm wide. Lead comes produced using a mill sometimes include the maker's name or decoration on the bottom of the groove made to take the window glass but on the visible parts of this fragment this area only has ridges corresponding to notches in the milling wheel. There is no sign of glass in the grooves.

### Mortar

Four fragments of mortar were recorded. They were not examined in detail.

## **Pottery**

The wares found in the evaluation are mostly well-known from previous work in South Yorkshire and are not described in detail (see Appendix 1). They are summarised here by approximate date.

### **Roman**

The two sherds of Roman pottery are both greyware jar bodysherds. One has the fine sandy texture of York products (Monaghan 1997, G1) and the other has rounded quartz sand, of Triassic character, which is typical of sandy wares produced in South Yorkshire (and Nottinghamshire and the Trent Valley). The former ware was produced from the late 1<sup>st</sup> to the early 3<sup>rd</sup> century whilst the latter has a longer life.

### **Anglo-Saxon**

No pottery dating between the 5<sup>th</sup> and the early 11<sup>th</sup> centuries was present.

### **Medieval**

The earliest pottery type present was York Gritty ware (YG). This type was produced in West Yorkshire and, possibly, at or close to Doncaster, using white-firing Coal Measures clays and tempered with a coarse sand most derived from the Millstone Grit. Production was probably underway by the 1080s, since the vill of Potterton, to the east of Leeds, is recorded in Domesday Book and because pottery of this type is the most common ware found in construction levels for the Norman minster at York (Holdsworth 1995).

However, production continued to at least the early 13<sup>th</sup> century and there are no known typological, manufacturing or fabric traits which can distinguish early from late York Gritty ware. Jean Le Patourel has, however, suggested that the squared rims of the cylindrical-bodied jars became more rounded over time (Le Patourel 1965) and there are some York Gritty wares which have rounded or shouldered jar forms and everted rims which typologically one could either place in the 11<sup>th</sup> century, transitional from Anglo-Scandinavian vessels to the new cylindrical forms, or in the 13<sup>th</sup> century, since this rounded form with an everted rim ultimately became the norm, for example in the Humberware industries of the later 14<sup>th</sup> century. The North Baileygate site produced examples of vessels with squared rims (Fig 1 Nos 4 and 5), more rounded rims on the same cylindrical form (Fig 1 No.2) and vessels of shouldered or rounded form with everted rims (Fig 1 Nos. 1 and 3). The stratigraphy of the North Baileygate sherds would back an early date for the rounded, everted rimmed jar form, since Fig 1 Nos 1 and 4 are both from Period 1 deposits and neither is associated with later pottery types. Fig 1 No.2 by contrast comes from a ditch fill which is dated to the later 12<sup>th</sup> century or later by the pottery finds. The other drawn sherds are residual.

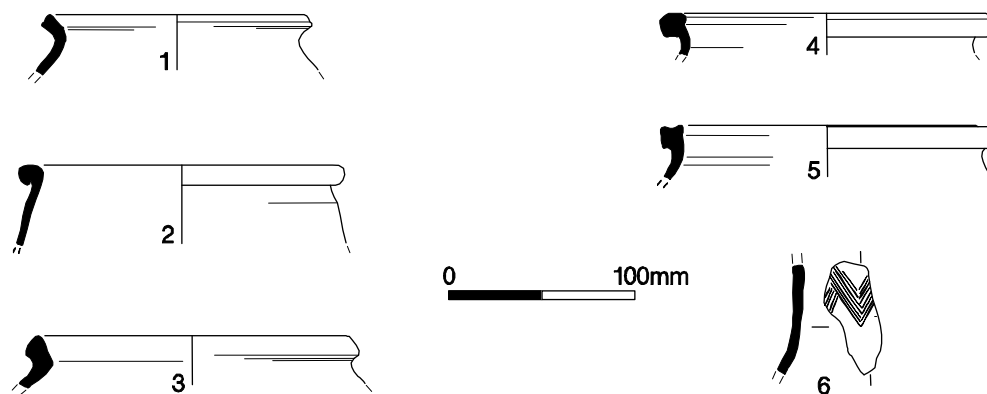


Figure 2

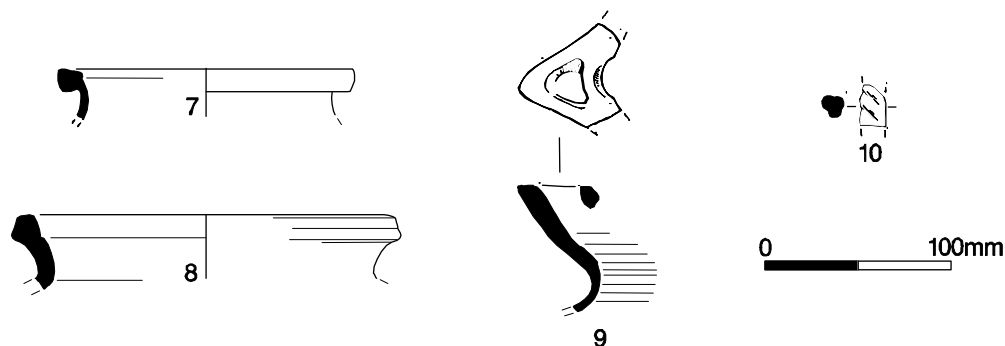
Drawing no	cname	context	period code	period	context group
1	YG	2122	SN	1	PIT 2123
2	YG	2061	EMED	1	DITCH 2094
3	YG	2048	EMOD	4	RT 2049
4	YG	2113	SN	1	
5	YG	2138	EMOD	4	PH 2139
6	YG	2055	LMED	2	

Wares dating to the later 12<sup>th</sup> to 13<sup>th</sup> century were also present at North Baileygate (Fig 2). The most common type is a sandy whiteware, similar to that produced at the Hallgate kilns in Doncaster (DONC B, Fig 2 Nos. 8-10. Buckland and Magilton 1979). Sherds include a bridge-spouted jug (Fig 2 No.9) and a twisted handle, probably a secondary handle from a highly-decorated jug (Fig 2 No.10). Typologically, the Hallgate kilns should date to the later 12<sup>th</sup> to early 13<sup>th</sup> centuries and this fits nicely with the first documentary evidence for the Firsby potters, who produced sandy Coal Measures Whiteware vessels from the later 13<sup>th</sup> to the 15<sup>th</sup> centuries (Hayfield and Buckland 1989). However, no analysis of the fabric of these sherds was undertaken and their identity is therefore not secure. The next most common type consists of Beverley-type glazed ware. All the sherds found have a fine fabric with no visible calcareous inclusions. In the Beverley industry this dates them later than the mid 12<sup>th</sup> century. Sherds with a visually similar appearance from York have been analysed using thin sections and chemical analysis and shown to be possibly made within the Vale of York, but from marine silts (i.e. a similar location to the later medieval Humberware industries, at Holme-upon-Spalding Moor, York and West Cowick). Without similar analysis it is not possible to say whether these sherds are from Beverley or a closer source, nor, if the later, whether this is the same source as supplied York. Other wares were represented by one or two sherds of each type. They consist of London-type ware; Northern Gritty ware; North Lincolnshire Fine Shelled ware and a possible sherd of York Glazed ware, now known to have been produced in the Hambleton Hills, in the same area as the later Brandsby-type ware.

These sherds indicate a wide range of connections, both up and down the Great North Road and, possibly by river (London-type ware is rarely found on midland inland sites, but occurs on coastal sites up the east coast as far as Aberdeen (Pearce, Vince, and Jenner 1985).

*Table 1*

Cname	JAR	JUG	JUG/JAR	PIPKIN	Grand Total
BEV0B?			1		1
BEV01B?		1			1
BEV02B		1			1
BEV02B?		5			5
BEVOB?	1				1
DONC B	1	16			17
LOND		1			1
MEDLOC		4		1	5
NGR	3	3			6
NLFS	2				2
YG	101	1			102
YORK?	1				1
Grand Total	109	32	1	1	143



*Figure 3*

drawing no	cname	context	period	context group
7	NGR	2058	2	
8	DONC B	2105	2	PIT 2106
9	DONC B	2091	1	
10	DONC B	2138	4	PH 2139

Late medieval sherds were rarer and consisted of 19 sherds of Humberware and one sherd of Coal Measures Whiteware, of the high-fired type with vitrified iron-rich inclusions, produced at Rawmarsh in the later 15<sup>th</sup> or 16<sup>th</sup> centuries. No analysis of these wares was undertaken and the precise source is therefore unknown. However, the potteries at West Cowick are the closest known Humberware source to Pontefract (14 miles, possibly using the River Aire, as opposed to 27 miles to York, all of which would have had to be overland).

### Post-medieval Pottery

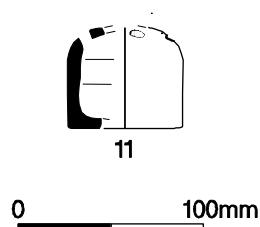
A small number of sherds of possible late 16<sup>th</sup> to mid 17<sup>th</sup>-century date were present. However, only four of these are of types which did not continue in use into the later 17<sup>th</sup> century and later. They consist of two sherds of Midlands Yellow ware (produced at several centres in Yorkshire and the midlands, of which by far the closest was at Wrenthorpe, which is less than ten miles from Pontefract, Moorhouse and Roberts 1992). The same source could have provided the two sherds of Cistercian-type ware although these were too small to determine their precise form for comparison with the blackwares from Wrenthorpe.

Twenty-nine sherds of later 17<sup>th</sup>-century to mid 18<sup>th</sup>-century date were present, but an unknown number of the post-medieval glazed red earthenware and blackware sherds from the site (6 and 38 sherds respectively) could be of similar date. These wares are mostly of Staffordshire slipware type and include press-moulded combed slip decorated dishes; mottled ware bowls, jars and jugs, yellow-glazed slipware bowls and two white salt-glazed stoneware bowls. Other wares include London stoneware, Nottingham stoneware and a tin-glazed ware plate. All these types are more likely to be of 18<sup>th</sup> than 17<sup>th</sup>-century date.

### Early Modern wares

Forty-one sherds of definite late 18<sup>th</sup>-century or later date were recorded. They include 10 sherds of Creamware, suggesting that late 18<sup>th</sup>-century pottery is present (although Creamware continued to be produced in the 19<sup>th</sup> century it is rare by then). Three sherds of miscellaneous refined whiteware (WHITE) were present. This code is usually used to describe the range of types produced in the mid 19<sup>th</sup>-century and later but in this case only one of the sherds is likely to be of that type, the other two being a sherd of biscuit-fired ware and a spacer, both evidence for pottery production.

An unknown quantity of coarsewares from the site could be of early modern date and these include an unusual blackware vessel (Fig 4), an enclosed form with three or more circular holes in the top. It might be a pen stand and is certainly more likely to have had a practical use than a decorative one, such as a flower-holder.



*Figure 4*

## **Shell**

Two shells were recorded, a mussel and an oyster. Both came from early modern deposits and indicate access to the coast.

## **Slag**

Four fragments of vesicular slag were recorded from post-medieval and modern deposits. No further analysis was undertaken.

A single fragment of what appears to be the corner of a rectangular black vesicular slag brick was recovered from the fill of a Phase 1 posthole.

Two fragments of a single piece of glassy slag were recorded. They came from an early modern deposit and no further analysis took place.

## **Stratigraphy**

The site stratigraphy was excavated in isolated trenches and the finds were used to assign a Phase to the contexts. Five phases were recognised.

### **Phase 1**

Dated to the late 11<sup>th</sup> to early 13<sup>th</sup> centuries on the basis of sherds of York Gritty ware, with or without later 12<sup>th</sup>-century or later types. One piece of brick, two pieces of mortar and one piece of pottery were probably intrusive. With their exceptions, the finds are consistent with a late 12<sup>th</sup> century date. The only contexts to produce solely York Gritty ware produced no more than 6 sherds (context 2091). The largest assemblage came from the fills of Ditch 2094, which produced 37 sherds, of which one was a Doncaster B jug and another a York Gritty ware jug. The remaining sherds were of York Gritty ware.

### **Phase 2**

Seventy sherds of pottery were recovered from Phase 2 deposits. They indicate that two features and one unidentified context, on ceramic groups, could date to the later 12<sup>th</sup>-century or later (context 2104, posthole 2068 and pit 2106) whilst four contexts could date to the later medieval period, since they contain Humberware (2047, 2055, 2058, 2059). The majority of the sherds in those later contexts were of 12<sup>th</sup> to 13<sup>th</sup>-century types, indicating a considerable amount of residuality, and a lack of pottery dating to the later 13<sup>th</sup> to 14<sup>th</sup> centuries.

### **Phase 3**

Eighteen finds were recovered from Phase 3 deposits. Of these, one was a Roman potsherd and two were medieval. The remaining finds consist of ceramic building material (12 fragments); a clay pipe stem; and two potsherds of late 17<sup>th</sup> or 18<sup>th</sup>-century date. The post-medieval finds come from contexts 2025, 2045, 2107 and 2109.

### **Phase 3 or 4**

Three contexts were phased to Phase 3 or 4. They contained 9 finds, of which three were residual medieval and the remainder consisted of ceramic building material, blackware, glazed red earthenware and late Humberware, all long-lived post-medieval to early modern types.

### **Phase 4**

One hundred and nineteen finds were recovered from phase 4 deposits. Of these 18 were residual pot sherds. Seven contexts produced finds which can only be dated to the post-medieval period or later (2016, 2018, 2026, 2042, 2053, 2086, and 2089).

Four contexts produced finds dating to the later 17<sup>th</sup> or 18<sup>th</sup> century or later (2038, 2054, 2073 and 2087).

Eleven contexts produced finds dating to the late 18<sup>th</sup> century or later (2022, 2027, 2030, 2031, 2048, 2060, 2071, 2075, 2077, 2120, and 2138). All these finds could date to the late 18<sup>th</sup> century apart from the ivory pipe mouthpiece (context 2077), a sherd of yellow ware (NCBW) from context 2120 and a sherd of miscellaneous refined whiteware from context 2022.



*Appendix 1*

class	cname	full name	period	earliest date	latest date	Broad source	Narrow source	source	bibliography
CBM	MTIL	Medieval tile (unspecified)	med	1150	1550	England	na	na	
CBM	PMTIL	Post-medieval ceramic building material	pmed	0	0				
COKE	COKE		NA	0	0				
GEO	GEO	Unworked stone	NA	0	0				
GLAS	PMGL	Post-Medieval glass	pmed	1550	2000	England	Various	Various	
IVORY	IVORY	Ivory	NA	0	0				
MORTAR	MORTAR	Mortar	NA	0	0				
PIPECLAY	PIPECLAY	Pipeclay	na	0	0				
POTTERY	BBAS	Black basalt ware	emod	1740	1900	England	various	various	
POTTERY	BEV0B?		emed-med	0	0				
POTTERY	BEV01B?		emed-med	0	0				
POTTERY	BEV02B	Beverley Glazed ware type 2B	emed	1170	1350	England	East Yorkshire	Beverley	Watkins 1991, 90-96
POTTERY	BEV02B?		emed-med	0	0				
POTTERY	BEV0B?		emed-med	0	0				
POTTERY	BL	Black-glazed wares	pmed	1500	1750	England	various	various	
POTTERY	CMW	Coal Measures whiteware	med	1250	1450	England			
POTTERY	CREA	Creamware	emod	1765	1830	England	Staffordshire		Vince 1985, 59, M6.G13-M7.A3; Vince 2002

The Alan Vince Archaeology Consultancy, 25 West Parade, Lincoln, LN1 1NW

<http://www.postex.demon.co.uk/index.html>

A copy of this report is archived online at <http://www.avac.uklinux.net/potcat/pdfs/avac2006103.pdf>

POTTERY	CSTN	Cistercian ware	pmed	1500	1650	England	Various		Mainman 1993, 591; Vince 1985, 64-5
POTTERY	DONC B	Doncaster 'B' ware	emed	1150	1250	England	South Yorkshire	Doncaster	Vince 1985, 62-3; Vince 2002
POTTERY	DONCB	Doncaster Hallgate Fabric B	med	1150	1250	England			
POTTERY	G1	Stafford-type ware	lsax	950	1050	England			
POTTERY	GRE	Glazed Red Earthenware	pmed	1500	1650	England	various	various	
POTTERY	GREY	Romano-British greywares	rom	40	400	England			
POTTERY	HUM	Humberware	lmed	1250	1500	England	Humber Estuary	various	Mainman 1993, 590
POTTERY	LHUM	Late Humber ware	emod	1550	1850	England	Yorkshire	Unknown	
POTTERY	LOND	London-type ware	emed	1100	1350	England	London		
POTTERY	LONS	London Stoneware	pmed	1670	1800	England	London	various	Mainman 1993, 665
POTTERY	MEDLOC	Medieval local fabrics	med	1150	1350	England	Lincolnshire	various	
POTTERY	MY	Midlands Yellow ware	pmed	1550	1650	England	Midlands		
POTTERY	NCBW	19th-century Buff ware	emod	1800	1900	England	Staffordshire	? numerous sources	Vince 1985, 59, M6.G13-M7.A3; Vince 2002
POTTERY	NGR	Northern Gritty ware	med	1150	1350	England	Yorkshire	Various	
POTTERY	NLFS	North Lincolnshire Fine Shelled ware	sn-med	1050	1200	England	North Lincolnshire	unknown	Watkins 1991, 76
POTTERY	NOTS	Nottingham stoneware	pmed	1690	1900	England	Nottinghamshire	Nottingham	Mainman 1993, 665
POTTERY	PEAR	Pearl ware	emod	1770	1900	England	Staffordshire/Bristol	various	Vince 1985; Vince

POTTERY	PMLOC	Post-medieval local	pmed	1550	1750	na	na	na	2002
POTTERY	SLIP	Unidentified slipware	pmed	1650	1750	England			
POTTERY	STCO	Staffordshire combed press- moulded ware	pmed	1650	1800	England	Staffordshire/Bristol	various	Vince 1985, 59, M6.G13- M7.A3;Vince 2002
POTTERY	STCOAR	Staffordshire coarseware	pmed	1650	1900	England/Wales	Staffordshire/Buckley	various	Vince 1985, 59, M6.G13- M7.A3;Vince 2002
POTTERY	STMO	Staffordshire/Bristol mottled-glazed	pmed	1690	1800	England	Staffordshire		Vince 1985, 59, M6.G13- M7.A3;Vince 2002
POTTERY	STSL	Staffordshire/Bristol slipware	pmed	1680	1800	England	Staffordshire or Bristol	Staffordshire or Bristol	Vince 1985, 59, M6.G13- M7.A3;Vince 2002
POTTERY	SWSG	Staffordshire White Saltglazed stoneware	pmed	1700	1770	England	Staffordshire	? numerous sources	Vince 1985, 59, M6.G13- M7.A3;Vince 2002
POTTERY	TGW	Tin-glazed ware	pmed	1640	1770	England	nk	? probably Bristol	Vince 1985, 64;Vince 2002
POTTERY	TPW	Transfer printed ware	emod	1770	1900	England	Staffordshire	? numerous sources	Vince 1985, 59, M6.G13- M7.A3;Vince 2002
POTTERY	WHITE	Modern whiteware	emod	1850	1900	England	Staffordshire	? numerous sources	Vince 1985, 59, M6.G13- M7.A3;Vince 2002
POTTERY	YG	Yorkshire gritty ware	sn- emed	1050	1250	England	Yorkshire/North		Mainman 1993,

585;Watkins  
1991, 78, 87

POTTERY	YORK?		emed	0	0	
SHELL	MUSSEL		NA	0	0	
SHELL	OYSTER		NA	0	0	
SLAG	SLAG	Slag - type unspecifed	nk	0	0	nk

## Appendix 2

Context	class	cname	subfabric	Form	Nosh	NoV	Action	Description	Part	Weight	Use	Condition
1006	POTTERY	BL		BOWL	4	4			R;BS	316		
1006	POTTERY	CSTN		CUP	1	1			BS	2		
1008	POTTERY	BL		CHPT	2	1			H;BS	135		
1008	POTTERY	CREA		TRIVET	1	1		TWO LEGS OF TRIVET	2 LEGS	10		PRODUCTION
1008	POTTERY	NOTS		JAR	2	2			BS	25		
1008	POTTERY	TPW		BOWL	1	1			R	7		
1008	POTTERY	TPW		BOWL	1	1			FOOTRING	18		GRITTY GLAZE IN BASE; SECOND?
1008	POTTERY	TPW		BOWL	1	1			R	5		
1013	POTTERY	BL		BOWL	6	5			B;BS	116		
1013	POTTERY	BL		BOWL	1	1		HANDLED BOWL	R	22		
1013	POTTERY	CREA		CUP	2	1			H;BS	5		
1013	POTTERY	CREA		JUG	1	1			BS	2		
1013	POTTERY	CSTN		CUP	1	1			H	13		
1013	POTTERY	NOTS		JAR	2	2		MOULDED DEC	BS	17		
1013	POTTERY	PEAR		BOWL	1	1		BLUE HAND PAINTED INT	FOOTRINGED BASE	5		
1013	POTTERY	LPMLOC		FLP	1	1			R	11		
1013	CBM	PMTIL		PANT	1	1			BS	22		
1013	POTTERY	STCOAR		BOWL	1	1			B	15		PIPECLAY ON BASE
1013	POTTERY	STCOAR		BOWL	2	1			B;BS	62		
1013	POTTERY	STSL		BOWL	2	1		BROWN AND DARK BROWN SLIP IN HORIZ BANDS	BS	16		

The Alan Vince Archaeology Consultancy, 25 West Parade, Lincoln, LN1 1NW

<http://www.postex.demon.co.uk/index.html>

A copy of this report is archived online at <http://www.avac.uklinux.net/potcat/pdfs/avac2006103.pdf>

Context	class	cname	subfabric	Form	Nosh	NoV	Action	Description	Part	Weight	Use	Condition
1013	POTTERY	STSL		BOWL	2	2		BROWN SLIP	BS	36		
1014	POTTERY	BL		BOWL	2	2			B;BS	21		
1014	POTTERY	BL		JAR	1	1			BS	1		
1014	PIPECLAY	PIPECLAY		CLAY PIPE	1	1		17-18 CENTURY BORE	STEM	2		
1014	POTTERY	STCO		DISH	2	1		MARBLED	BS	8		
1014	POTTERY	TGW		PLATE	1	1			BS	7		
2005	POTTERY	TPW		PLATE	1	1			BS	1		
2012	POTTERY	CREA		BOWL	1	1			BS	1		
2012	POTTERY	CREA		JUG	1	1		INDUST BROWN SLIP	BS	3		
2012	POTTERY	GRE		BOWL	1	1			BS	14		
2012	POTTERY	NOTS		JAR	1	1			BS	1		
2012	POTTERY	PEAR		PLATE	1	1			BS	3		
2012	PIPECLAY	PIPECLAY		CLAY PIPE	1	1		18-19 CENTURY BORE; FAINT ROULETTED DEC ROUND PART OF STEM	STEM	3		
2012	GLAS	PMGL	LTGR	BOT	1	1			BS	2		
2012	POTTERY	STCOAR		BOWL	1	1			BS	10		
2012	POTTERY	TPW		BOWL	1	1			BS	2		
2014	POTTERY	BL		BOWL	3	3			BS	7		
2014	POTTERY	CREA		CHPT	1	1			FOOTRING BASE	87		
2014	POTTERY	GRE		BOWL	2	2			BS	12		
2014	POTTERY	HUM		JUG	1	1			BS	4		
2014	POTTERY	NOTS		JAR	3	3			B;BS	16		
2014	POTTERY	PEAR		JUG	1	1			H	9		
2014	POTTERY	PEAR		PLATE	1	1		BLUE PAINTED	BS	1		
2014	POTTERY	PEAR		CUP	1	1		BLUE PAINTED INT	FOOT RING	1		
2014	PIPECLAY	PIPECLAY		CLAY PIPE	3	3		18-19 CENTURY BORE	STEM	8		

AVAC Report 2006/103

Context	class	cname	subfabric	Form	Nosh	NoV	Action	Description	Part	Weight	Use	Condition
2014	POTTERY	LPMLOC		FLP	1	1			R	29		
2014	POTTERY	STCOAR		BOWL	1	1		NO GLAZE	BS	9		
2014	POTTERY	STMO		BOWL	1	1			B	25		
2014	POTTERY	SWSG		BOWL	2	2			BS	16		
2014	POTTERY	TPW		PLATE	1	1			BS	1		
2016	COKE	COKE			2	1			BS	3		
2016	CBM	PMTIL		FLAT	1	1			BS	26		
2018	COKE	COKE			1	1			BS	1		
2018	POTTERY	MY	COAL	JAR	2	1			BS	26	SOOTED EXT; WHITE DEP INT	
2018	CBM	PMTIL		?	1	1			BS	3		
2022	POTTERY	WHITE		BOWL	1	1			BS	1		
2022	POTTERY	YG		JAR	1	1			BS	15		
2024	POTTERY	BL		JAR	1	1			BS	3		
2024	POTTERY	GRE		BOWL	1	1			BS	23		
2024	CBM	PMTIL		?	2	2			BS	14		
2024	POTTERY	YG		JAR	1	1			BS	11		BURNT
2024	POTTERY	YG		JAR	1	1			BS	24		SOIL DEP ALLOVER
2025	CBM	PMTIL		FLAT	1	1			BS	7		
2025	CBM	PMTIL		FLAT	3	3			BS	126		
2026	POTTERY	BL		BOWL	1	1			BS	1		
2026	CBM	PMTIL		BRICK	1	1			BS	4		
2027	PIPECLAY	PIPECLAY		CLAY PIPE	1	1		18-19 CENTURY BORE	STEM	2		
2027	POTTERY	TPW		PLATE	1	1			BS	1		
2027	POTTERY	TPW		CUP	1	1			R	1		

AVAC Report 2006/103

Context	class	cname	subfabric	Form	Nosh	NoV	Action	Description	Part	Weight	Use	Condition
2030	POTTERY	BL		BOWL	3	3			BS	60		
2030	POTTERY	TPW		PLATE	1	1			BS	1		
2031	POTTERY	BL		BOWL	2	2			R;BS	7		
2031	POTTERY	CREA		PLATE	2	1			BS	2		
2031	MORTAR	MORTAR		MORTAR	1	1			BS	1		
2031	POTTERY	PEAR		BOWL	1	1			BS	1		
2031	GLAS	PMGL	LTGR	PHIAL	1	1			B	32		
2031	POTTERY	TPW		PLATE	1	1			BS	2		
2031	POTTERY	WHITE		CUP	1	1		BISCUIT	B	3		PRODUCTION WASTE?
2038	POTTERY	BEVO2B?		JUG	1	1			BS	11		
2038	POTTERY	DONC B		JUG	1	1			BS	7		
2038	POTTERY	NOTS		JAR	1	1			BS	21		
2038	CBM	PMTIL		FLAT	1	1			BS	12		
2038	CBM	PMTIL		PANT	1	1			BS	175		
2038	POTTERY	SLIP		BOWL	1	1			R	19		SOOTED EXT
2042	POTTERY	BL		JAR	1	1			BS	9		
2042	POTTERY	BL		INKWELL??	1	1	DR	BASE 60MM DIA; CLOSED FORM; TWO PIERCED HOLES 8MM DIA IN TOP	B	38		
2042	CBM	PMTIL		PANT	1	1			BS	71		
2044	POTTERY	G1		JAR	1	1			BS	13	SOOTED EXT	
2045	POTTERY	HUM		JUG	1	1			BS	3	WHITE DEP INT	
2045	POTTERY	LOND		JUG	1	1			BS	2		
2045	PIPECLAY	PIPECLAY		CLAY PIPE	1	1		17-18 CENTURY BORE	STEM	2		
2045	CBM	PMTIL		BRICK	3	3			BS	213		
2045	CBM	PMTIL		PANT	2	1			BS	35		



AVAC Report 2006/103

Context	class	cname	subfabric	Form	Nosh	NoV	Action	Description	Part	Weight	Use	Condition
2045	POTTERY	STMO		JUG	1	1			BS	11		
2046	POTTERY	LHUM		JUG/JAR	1	1			BS	34		
2047	POTTERY	BEV0B?		JUG/JAR	1	1		NO SURFACE	BS	4	WHITE DEP INT	
2047	POTTERY	BEVO2B?		JUG	4	3			BS	21		
2047	POTTERY	DONC B		JUG	2	2			BS	20		
2047	POTTERY	HUM		JUG/JAR	3	3			BS	30		
2047	POTTERY	YG		JAR	6	6			BS	65		
2047	POTTERY	YG		JAR	1	1			B	7	SOOTED EXT	
2047	POTTERY	YORK?		JAR	1	1			BS	4	SOOTED EXT	
2048	POTTERY	BL		BOWL	4	4			R;B;BS	97		
2048	POTTERY	GRE		BOWL	1	1			R	28		
2048	POTTERY	NOTS		BOWL	1	1			R	4		
2048	POTTERY	PEAR		BOWL	2	1		BLUE FEATHERING ALONG RIM	R	20		
2048	PIPECLAY	PIPECLAY		CLAY PIPE	1	1		18-19 CENTURY BORE	STEM	1		
2048	PIPECLAY	PIPECLAY		CLAY PIPE	1	1		17-18 CENTURY BORE	STEM	1		
2048	POTTERY	YG		JAR	1	1	DR		R	20	SOOTED ON RIM	
2050	POTTERY	YG		JAR	1	1			B	22		
2053	POTTERY	GRE		BOWL	1	1			BS	8		
2053	GLAS	PMGL	LTGR	WIND	1	1			BS	1		
2053	CBM	PMTIL		FLAT	2	2			BS	81		
2053	CBM	PMTIL		BRICK	3	3			BS	46		
2053	POTTERY	YG		JAR	1	1			BS	11	SOOTED EXT	
2054	POTTERY	STMO		JAR	1	1			B	7		
2055	POTTERY	DONC B		JUG	4	3			H;BS	76		
2055	POTTERY	HUM		JUG/JAR	1	1			BS	8		

AVAC Report 2006/103

Context	class	cname	subfabric	Form	Nosh	NoV	Action	Description	Part	Weight	Use	Condition
2055	POTTERY	HUM		JUG	3	1			H;BS	128		
2055	POTTERY	NLFS		JAR	1	1			BS	10		
2055	POTTERY	YG		JAR	1	1	DR	COMBED ZIG-ZAGS	BS	10		
2055	POTTERY	YG		JAR	4	4			B;BS	47		
2055	POTTERY	YG		JAR	3	3			B;BS	50		
2058	POTTERY	HUM		JUG/JAR	5	5			B;BS	47		
2058	POTTERY	NGR		JAR	1	1	DR		R	31		
2058	POTTERY	NGR		JUG	3	1			BS	37		
2059	POTTERY	BEVO1B?		JUG	1	1			BS	17	WHITE DEP INT	
2059	POTTERY	BEVOB?		JAR	1	1			B	12	SOOTED EXT	
2059	GEO	GEO			1	1			BS	137		
2059	POTTERY	HUM		JUG/JAR	4	4			BS	26		
2059	POTTERY	YG		JAR	2	2			BS	30	SOOTED EXT	
2059	POTTERY	YG		JAR	6	6			BS	99		
2059	POTTERY	YG		JAR	1	1			BS	3	BLACK DEP INT	
2060	POTTERY	BL		BOWL	1	1		SHERD AHERED BY GLAZE TO SAUSAGE SHAPED KILN SEPARATER	BS	58		WASTER FROM PRODUCTION
2060	POTTERY	CREA		PLATE	1	1			BS	6		
2061	POTTERY	DONC B		JUG	1	1			BS	6		
2061	GEO	GEO		GEO	1	1			BS	8		
2061	GEO	GEO			1	1			BS	98		
2061	MORTAR	MORTAR		MORTAR	1	1			BS	1		
2061	MORTAR	MORTAR		MORTAR	1	1			BS	2		
2061	POTTERY	YG		JAR	5	1	DR		R;BS	20		

AVAC Report 2006/103

Context	class	cname	subfabric	Form	Nosh	NoV	Action	Description	Part	Weight	Use	Condition
2061	POTTERY	YG		JAR	3	3			BS	22	SOOTED EXT; BLACK DEP INT	
2061	POTTERY	YG		JAR	3	3			BS	32	SOOTED EXT	
2061	POTTERY	YG		JAR	1	1			R	4		
2061	POTTERY	YG		JAR	7	7			B;BS	48		
2061	POTTERY	YG		JAR	8	4			BS	27		
2061	POTTERY	YG		JUG	1	1		STRAP HANDLE WHERE JOINS TO BODY	H	11		
2062	POTTERY	DONC B		JUG	1	1			BS	10		
2062	POTTERY	YG		JAR	1	1			BS	16		
2067	POTTERY	DONC B		JUG	2	1			BS	7		
2071	POTTERY	BBAS		TPOT	1	1			BS	1		
2071	POTTERY	BL		JAR	1	1			BS	6		
2071	POTTERY	CMW	RAWMARSH	JUG	1	1			BS	5		
2071	SHELL	OYSTER			1	1			BS	1		
2071	CBM	PMTIL		PANT	1	1			BS	59		
2071	POTTERY	YG		JAR	1	1			BS	2		
2073	POTTERY	LONS		DJ	2	1			BS	22		
2073	CBM	PMTIL		FLAT	2	2			BS	74		
2073	CBM	PMTIL		BRICK	5	5			BS	155		
2073	CBM	PMTIL		PANT	1	1			BS	37	SOOTED UNDERNEATH	
2073	POTTERY	YG		JAR	2	2			BS	19	SOOTED EXT	
2075	CBM	PMTIL		BRICK	3	3			BS	14		
2075	CBM	PMTIL		FLAT	1	1			BS	7		
2075	POTTERY	TPW		BOWL	1	1			BS	26		
2075	POTTERY	YG		JAR	1	1			BS	7		BURNT

AVAC Report 2006/103

Context	class	cname	subfabric	Form	Nosh	NoV	Action	Description	Part	Weight	Use	Condition
2075	POTTERY	YG		JAR	1	1			BS	1		
2077	IVORY	IVORY		MOUTH PIECE FOR PIPE	1	1	DR	PERS COMM ALAN PEACEY; FROM MID 19TH CENTURY ONWARDS, PIPE WOULD BE BRIAR; RARE FIND	MOUTH PIECE	2		ABRA; WELL USED?
2077	POTTERY	TPW		PLATE	2	2			BS	12		
2081	POTTERY	BEVO2B		JUG	1	1			BS	6		
2081	POTTERY	MEDLOC		PIPKIN	1	1		SCAR OF FOOT	BS	11		
2081	POTTERY	MEDLOC		JUG	1	1		WHITE SLIP UNDER GREEN GLAZE	BS	1		
2081	POTTERY	MEDLOC		JUG	2	2			BS	22		
2083	CBM	PMTIL		BRICK	1	1			BS	3		
2083	POTTERY	YG		JAR	1	1			BS	4	SOOTED EXT	
2083	POTTERY	YG		JAR	1	1			BS	22		BURNT
2086	CBM	PMTIL		FLAT	1	1			BS	16		
2086	CBM	PMTIL		PANT	1	1			BS	50		
2086	CBM	PMTIL		?	1	1			BS	3		
2086	POTTERY	YG		JAR	1	1			BS	3		
2087	POTTERY	HUM		JUG/JAR	1	1			BS	3		
2087	PIPECLAY	PIPECLAY		CLAY PIPE	1	1		17-18 CENTURY BORE	STEM	4		
2087	GLAS	PMGL	LTGR	WIND	1	1			BS	5		
2087	GLAS	PMGL	DKGR	BOT	1	1			BS	8		
2087	CBM	PMTIL		?	3	3			BS	18		
2089	CBM	MTIL		FLAT	1	1			BS	9		
2089	CBM	PMTIL		BRICK	2	2			BS	6		
2089	POTTERY	YG		JAR	1	1			BS	4	SOOTED EXT	
2091	POTTERY	DONC B		JUG	1	1	DR	PARROT BEAKED SPOUT WITH BRIDGE; LID WOULD BE TWISTED TO HOLD UNDER BRIDGE	SPOUT	80		

AVAC Report 2006/103

Context	class	cname	subfabric	Form	Nosh	NoV	Action	Description	Part	Weight	Use	Condition
2091	POTTERY	DONC B		JUG	1	1			BS	2		
2091	POTTERY	DONC B		JAR	1	1			BS	10	SOOTED EXT	
2091	POTTERY	MEDLOC		JUG	1	1			R	10		ABRA
2091	POTTERY	YG		JAR	1	1			R	6		
2091	POTTERY	YG		JAR	1	1			BS	6		
2091	POTTERY	YG		JAR	1	1			R	13		
2091	POTTERY	YG		JAR	2	2			BS	10		
2093	CBM	PMTIL		BRICK	1	1			BS	2		ABRA
2093	POTTERY	YG		JAR	1	1			R	15		
2098	GEO	GEO			1	1			BS	39		
2098	POTTERY	WHITE		SPACER	1	1			BS	1		PRODUCTION WASTE
2098	POTTERY	YG		JAR	2	2			BS	26		
2098	POTTERY	YG		JAR	1	1			BS	5	SOOTED EXT; BLACK DEP INT	
2098	POTTERY	YG		JAR	2	2			BS	2		
2098	POTTERY	YG		JAR	3	2			BS	14	SOOTED EXT	
2100	GEO	GEO			1	1			BS	130		
2100	POTTERY	YG		JAR	1	1			R	9		
2104	POTTERY	NGR		JAR	2	1			BS	29		
2104	POTTERY	NLFS		JAR	1	1			BS	2		
2104	POTTERY	YG		JAR	2	2			BS	23	SOOTED EXT	
2104	POTTERY	YG		JAR	1	1			BS	10	BLACK DEP INT	
2105	POTTERY	DONC B		JUG	1	1	DR		R	36		ABRA
2105	POTTERY	GREY	SOUTH YORKS	JAR	1	1			B	30		

AVAC Report 2006/103

Context	class	cname	subfabric GREYWARE	Form	Nosh	NoV	Action	Description	Part	Weight	Use	Condition
2105	POTTERY	YG		JAR	1	1			BS	20	SOOTED EXT; BLACK DEP INT	
2107	CBM	PMTIL		PANT	1	1			BS	53		
2109	POTTERY	BL		JAR	1	1			BS	2		
2109	CBM	PMTIL		FLAT	2	2			BS	45		
2113	POTTERY	YG		JAR	1	1	DR		R	9		
2113	POTTERY	YG		JAR	5	5			BS	24	SOOTED EXT	
2114	POTTERY	YG		JAR	1	1			BS	1	SOOTED EXT	
2120	SHELL	MUSSEL			1	1			BS	1		
2120	POTTERY	NCBW		BOWL	1	1		BLUE & WHITE INDUST SLIP HORIZ BANDS	BS	1		
2120	PIPECLAY	PIPECLAY		CLAY PIPE	3	3		18-19 CENTURY BORE	STEM	4		
2120	GLAS	PMGL	LTGR	WIND	1	1			BS	1		
2120	CBM	PMTIL		?	1	1			BS	3		
2120	POTTERY	TPW		BOWL	1	1			BS	2		
2122	POTTERY	YG		JAR	1	1	DR		R	19	SOOTING ON RIM	
2134	POTTERY	BL		JAR	2	2			BS	12		
2134	POTTERY	BL		BOWL	1	1			BS	16		
2137	POTTERY	DONC B		JUG	1	1			BS	1		
2137	POTTERY	YG		JAR	5	5			BS	20		
2138	POTTERY	DONC B		JUG	1	1	DR	SMALL TWISTED HANDLE 12MM WIDE	H	3		
2138	MORTAR	MORTAR		MORTAR	1	1			BS	4		
2138	POTTERY	PEAR		PLATE	1	1			BS	1		
2138	PIPECLAY	PIPECLAY		CLAY PIPE	1	1		18-19 CENTURY BORE	STEM	1		
2138	POTTERY	LPMLOC		FLP	1	1			BS	1		

Context	class	cname	subfabric	Form	Nosh	NoV	Action	Description	Part	Weight	Use	Condition
2138	SLAG	SLAG			2	1		OF GLASS LIKE MATERIAL	BS	22		
2138	POTTERY	YG		JAR	2	2	DR		R;BS	34		

### *Appendix 3 Metal Finds*

Context	REFNO	Action	class	cname	subfabric	Form	Description	Part	Nosh	NoV	Weight	Condition	Use
1013	9		LEAD	LEAD		CAME	MILLED CAME	BS	1	1	18		
2020		XRAY X6659	SLAG	SLAG		SLAG	LUMP OF VESICULAR SLAG CONTAINING COAL AND SHALE FRAGS	BS	1	1	8		
2025		XRAY X6659	SLAG	SLAG		SLAG	LUMP OF VESICULAR SLAG	BS	1	1	15		
2044		XRAY X6659	SLAG	SLAG		SLAG	LUMP OF VESICULAR SLAG	BS	1	1	13		
2055	1	XRAY X6659	COPP	COPP		FITTING	RECTANGULAR SHEET METAL MOUNT WITH PARALLEL GROOVED DECORATION; RAISED DECORATION AT ONE END AND BENT AT 90 DEGREES ON BOTH LONG SIDES	BS	1	1	1		
2055	7	XRAY X6659	COPP	COPP		STRIP	RECT STRIP CHAMFERED AT CORNERS AT ONE END AND BROKEN AT THE OTHER	BS	1	1	1		
2061	10	XRAY X6659	IRON	IRON		AWL	JOINS SF11	BS	1	1	123		
2061	11	XRAY X6659	IRON	IRON		AWL	JOINS SF10	BS	1	1	80		
2087		XRAY X6659	SLAG	SLAG		SLAG	LUMP OF VESICULAR SLAG	BS	1	1	23		
2100		XRAY X6659	SLAG	SLAG		BLOCK	CORNER FROM RECT BLACK VESICULAR SLAG BLOCK	BS	1	1	52		
2104	13	XRAY X6659	IRON	IRON		NAIL		BS	1	1	8		
2104	13	XRAY X6659	IRON	IRON		NAIL		BS	1	1	3		
2104	13	XRAY X6659	IRON	IRON		NAIL		BS	1	1	16		

# AVAC Report 2006/103

2126	4	XRAY X6659	IRON	IRON	NAIL		BS	1	1	10
2138			SLAG	SLAG		OF GLASS LIKE MATERIAL	BS	2	1	22
U/S	3	XRAY X6659	IRON	IRON	NAIL		BS	1	1	15



## Bibliography

- Buckland, P C Dolby M J Hayfield C and Magilton, J R (1979) *The medieval pottery industry at Hallgate, Doncaster.* The Archaeology of Doncaster 2/1
- Hayfield, C. and Buckland, P. C. (1989) "Late Medieval Pottery Wasters from Firsby, South Yorkshire." *Transactions of the Hunter Archaeological Society*, 15, 8-24
- Holdsworth, J. (1995) "6.2 Post-Roman pottery ." in D. Phillips and B. Heywood, eds., *Excavations at York Minster*, HMSO, London,
- Le Patourel, J. (1965) "The Pottery." in Bellamy, C V (*Pontefract Priory excavations, 1957-1961*), *The Thoresby Society*, Series 1, XLIX
- Mainman, A J (1993) *The pottery from 46-54 Fishergate.* The Archaeology of York 16/6 London, Council British Archaeol
- Monaghan, Jason (1997) *Roman Pottery from York.* The Archaeology of York 16/8 York, Council for British Archaeology
- Moorhouse, Stephen and Roberts, Ian (1992) *Wrenthorpe Potteries: Excavations of 16th and 17th-century Potting Tenements near Wakefield, 1983-86.* Yorkshire Archaeology 2 Wakefield, W Yorkshire Archaeol Service
- Pearce, J E, Vince, A G, and Jenner, M A (1985) *A Dated Type-series of London Medieval Pottery: Part 2, London-type Ware.* London Middlesex Archaeol Soc Spec Pap 6 London, London Middlesex Archaeol Soc
- Vince, A. G. (1985) "Part 2: the ceramic finds." in R. Shoesmith, ed., *Hereford City Excavations: Volume 3. The Finds*, CBA Research Report 56 The Council for British Archaeology, London,
- Vince, A. (2002) "The Pottery." in A. Thomas and A. Boucher, eds., *Hereford City Excavations Volume 4: Further Sites & Evolving Interpretations*, Logaston Press, Logaston, 65-92
- Watkins, G. (1991) "The Pottery." in P. T. D. Armstrong and D. H. Evans, eds., *Excavations at Lurk Lane Beverley, 1979-82*, Sheffield Excavation Rep 1 J R Collis Publ , Sheffield, 61-103