

## **Assessment of the Pottery from Church Row Farm, Rode, Nr Frome, Somerset (CRF 08/72)**

***Alan Vince and Kate Steane***

A small assemblage of pottery was recovered during archaeological investigations at Church Row Farm, Rode, carried out by TVAS Ltd. The material ranges in date from the medieval period to the modern period.

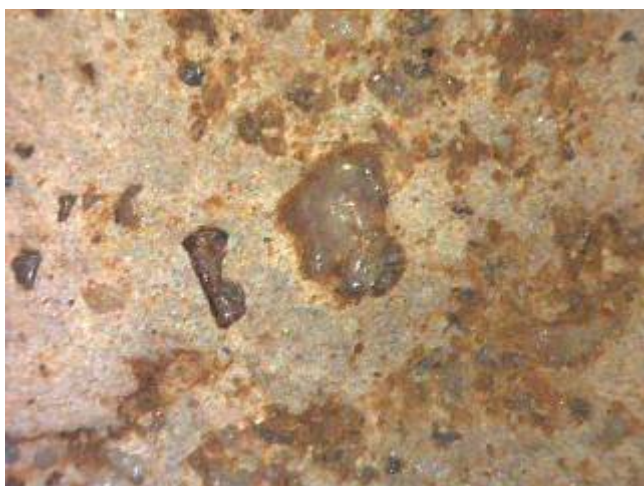
### Description

#### **Pottery**

A total of 29 sherds were submitted, weighing 357 gm. No cross-fitting sherds were noted.

#### Medieval

Two sherds of handmade jars of Bath Fabric A (Vince 1979; Vince 1984) were recovered from Trench 7. The distinguishing characteristics of this fabric are water-polished rounded quartz grains and a silty micaceous groundmass (Fig 1).



*Figure 1 Bath Fabric A (field of view approx 3.4mm wide)*

#### Post-medieval

One sherd of Crockerton ware was recovered from Trench 10. The distinguishing characteristic of this ware is the abundant rounded iron-rich grains present in the groundmass (Fig 2). The sherd is from the base of a jar (or perhaps a bowl) with sooted exterior and a black internal deposit.



*Figure 2 Crockerton ware (field of view approx 3.4mm wide)*

The remaining post-medieval sherds are of South Somerset ware (SSOM). The closest source of this ware to Rode is at Wanstrow, 12 miles to the southwest of Rode but waste from that site does not include slipware and this, at least, may come from further south, for example Donyatt (Coleman-Smith and Pearson 1988), 50 miles to the southwest. There is no clear difference in fabric between the products of these two centres.

Bowls are the most common form in this collection, followed by jars and jugs with a single example of a small cup, possibly of 16<sup>th</sup>-century date. A similar date is likely for one of the jug sherds, a plain strap handle from a large rounded vessel.

One of the bowls has white slip trailed decoration, with a central white slip circlet surrounded by probable sgraffitto panels to either side of a radial band (Fig 3).



*Figure 3*

Modern

A single sherd of modern pottery was submitted. It appears to be a refined whiteware (WHITE) and is the weathered rim from a mug or cup with moulded decoration and traces of overglaze painting (Fig 4). A 19<sup>th</sup> or 20<sup>th</sup>-century date is likely.



*Figure 4 Unidentified Refined Whiteware*

## Assessment

The collection includes two sherds of medieval date. Both are fairly fresh and suggest occupation nearby rather than a manuring scatter. The post-medieval pottery includes some probable 16<sup>th</sup>-century sherds (the Crockerton ware and perhaps the cup rim and one of the jug sherds) as well as at least one sherd of mid 17<sup>th</sup>-century or later date (the slipware bowl).

Only one small assemblage came from a stratified deposit, context 50, and this can only be dated to the later 16<sup>th</sup> century or later.

## Retention

The pottery is mainly unstratified and of well-known types. However, it is very likely that chemical analysis of the fabric of the various wares will eventually enable them to be assigned to specific production sites and phases. Therefore it is recommended that the medieval and post-medieval material is retained. The modern sherd is only tentatively identified and therefore this too ought to be retained for possible future re-identification.

## Further work

No further work is recommended.

## Bibliography

- Coleman-Smith, R and Pearson, T (1988) *Excavations in the Donyatt Potteries*. Chichester, Phillimore & Co Ltd
- Vince, A. G. (1979) "The Medieval Pottery: Fabric Types." in B. W. Cunliffe, ed., *Excavations in Bath 1950-1975*, Comm Rescue Archaeol Avon Gloucestershire Somerset, 27-38
- Vince, A. G. (1984) *The Medieval Ceramic Industry of the Severn Valley*. University of Southampton, Unpublished PhD thesis.

Trench	Context	class	Description	Cname	Form	Part	Nosh	NoV	Weight	Condition	Use
7		GEO		GEO	GEO	BS	1	1	15		
5		POTTERY	FLANGED	SSOM	BOWL	R	1	1	22		
5		POTTERY	GLAZED UNDER RIM	SSOM	JAR	R	1	1	16		
5		POTTERY	GLAZED INT/ON RIM	SSOM	JAR	R	1	1	21		
5		POTTERY	FLANGED; NO GLAZE	SSOM	BOWL	R	1	1	14		
5		POTTERY		SSOM	BOWL	BS	3	3	15		
5		POTTERY	SLIP AND POSSIBLE SGRAFFITO DECORATED (Fig 3)	SSOM	BOWL	BS	1	1	7		SOOTED EXT
6		POTTERY		SSOM	CUP	R	1	1	3		
7		CBM		PMTIL	FIELD DRAIN	R	1	1	15		
10		POTTERY	(Fig 2)	CROCKERTON	JAR	B	1	1	31		SOOTED EXT; BLACK DEP INT
7		POTTERY	(Fig 1)	BATHA	JAR	BS	2	2	18		
7		POTTERY		SSOM	JUG	BS	4	4	21		
7		POTTERY		SSOM	JAR	BS	4	4	27	BATTERED	
7		POTTERY	GLAZED INT/EXT	SSOM	JAR	BS	3	3	14		
7		POTTERY	GLAZE INT/RED SLIP EXT	SSOM	BOWL	BS	1	1	5		
7		POTTERY		SSOM	BOWL	BS	1	1	3		
7		POTTERY		SSOM	BOWL	BS	2	2	17	BATTERED	SOOTED EXT
7		POTTERY	MOULDED DEC EXT (Fig 4)	WHITE	TANK	R	1	1	4		

The Alan Vince Archaeology Consultancy, 25 West Parade, Lincoln, LN1 1NW  
<http://www.postex.demon.co.uk/index.html>  
A copy of this report is archived online at  
<http://www.avac.uklinux.net/potcat/pdfs/avac2008067.pdf>

AVAC Report 2008/67

Trench	Context	class	Description	Cname	Form	Part	Nosh	NoV	Weight	Condition	Use
7		CBM		MTIL/PMTIL	FLAT/PANT	BS	1	1	1		
7		POTTERY	HANDLE TO BODY JOIN; STRAP HANDLE 48 ACROSS	SSOM	JUG	BS	1	1	102		
	50	POTTERY	GLAZED INT/EXT	SSOM	BOWL	BS	1	1	3		
	50	POTTERY		SSOM	BOWL	BS	1	1	24		SOOTED EXT
	50	POTTERY		SSOM	BOWL	R	1	1	25		
	50	POTTERY		SSOM	BOWL	BS	1	1	18	EXT OF POT GONE	