

Assessment of the Finds from Birmingham Rd, Lichfield, Staffordshire (OSA07 EV14)

Alan Vince and Kate Steane

The finds from an archaeological evaluation carried out at Birmingham Road, Lichfield, by On-Site Archaeology Ltd were submitted to the authors for identification and assessment. They consisted of finds in a variety of materials (Table 1) but the most common by far were pottery, ceramic building material (CBM) and clay tobacco pipes (PIPECLAY).

The finds range in date from the medieval period (probably later 12th or early 13th century) to the present day (the latest find appears to be builders plastic sheeting!) and includes a substantial and apparently coherent assemblage of late 13th to 14th-century date from the fill of the first surviving city ditch. A later recut of this ditch is dated by the finds to the later 15th or early 16th century. Almost all the post-medieval and modern material from the site consists of finds from make-up deposits and similar contexts and provides no finds useful assemblages. No finds earlier than the later 12th century were identified and it is quite likely in fact that no activity took place on the site until the early 13th century. Leather finds are separately assessed (by Q Mould).

Description

A total of 868 finds, representing no more than 750 objects and weighing in total 56.331 Kg was submitted for identification and assessment. They were catalogued using a modified version of the Museum of London system whilst the pottery codes were based on recent practice at Stoke-upon-Trent Museum (inf ex D Klemperer). The finds were quantified by fragment count (nosh), original objects (nov) and weight in grams.

Table 1

class	Sum of NoV	Sum of Nosh	Sum of Weight
CBM	248	267	46445
COKE/SHALE	1	1	9
COPP	1	1	4
COPP/LEATHER	1	2	5
INDUST WASTE	1	1	8
IRON	2	2	87
LEAD	1	1	6
PIPECLAY	37	39	76
PLASTER	2	2	12

The Alan Vince Archaeology Consultancy, 25 West Parade, Lincoln, LN1 1NW

<http://www.postex.demon.co.uk/index.html>

A copy of this report is archived online at

<http://www.avac.uklinux.net/potcat/pdfs/avac2007000.pdf>

PLASTIC	1	1	34
PMGL	17	22	454
POTTERY	436	521	9057
SLAG	2	8	134
Grand Total	750	868	56331


Ceramic Building Material

Two hundred and sixty-seven fragments of ceramic building material were identified. A sample was examined at x20 magnification and on this basis the entire collection was classified using a fabric series. Exceptions consist of refined whiteware sanitary ware (i.e. fragments of toilet bowl) and a fragment of Droitwich-type floor tile (DROIT). Examples of each fabric have been extracted to form a site-based fabric series.

Fabrics

Eleven fabric groups were recognised visually, with the aid of a x20 stereo microscope. Some of these, however, would probably be capable of merging.

Table 2

subfabric	Brief description	Interpretation	Photomicrograph	Total
NA				2
FAB 1	Well mixed clay. Moderate rounded quartz sand throughout similar to that used as moulding sand on the base and sides (up to 1.0mm across). Large laths of muscovite, up to 1.0mm across, are a distinctive feature.	The inclusions probably come from a Triassic sandstone. Similar fabrics have been seen at Kidderminster, Worcestershire, and in Warwickshire. Definitely different in origin from Fabric 2 etc.		35

The Alan Vince Archaeology Consultancy, 25 West Parade, Lincoln, LN1 1NW

<http://www.postex.demon.co.uk/index.html>

A copy of this report is archived online at

<http://www.avac.uklinux.net/potcat/pdfs/avac2007000.pdf>

FAB 2

Poorly mixed, strongly laminated clay with lenses of light pink marl. Moderate subangular quartzose sand up to 1.0mm across. Rare black-cemented sandstone fragments.

Probably made from Mercian Mudstone. Identity of sandstone unknown but not a feature of Worcestershire ceramics.

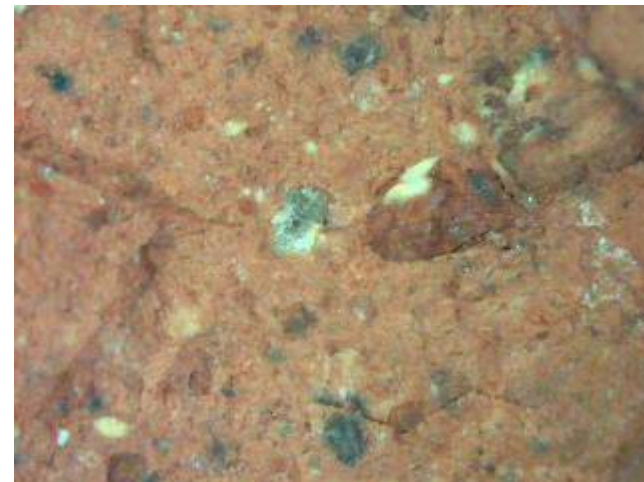


19

FAB 3

Dark red and yellow-firing clay pellets. Little if any quartzose sand.

Probable modern Coal Measures wall tiles

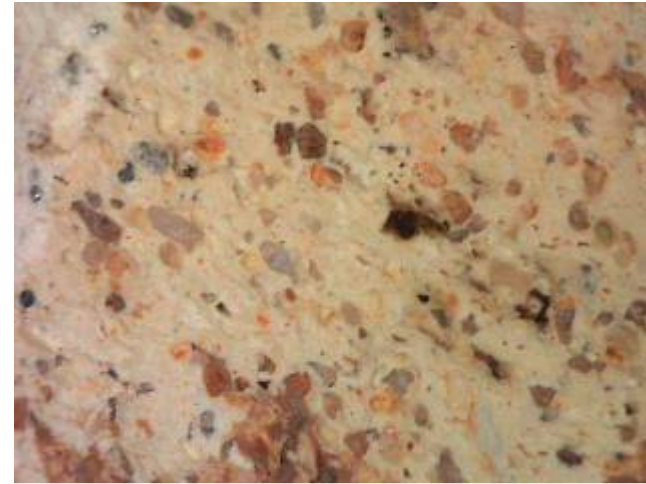


1

FAB 4

Well mixed clay. The inclusions form a well-sorted quartzose sand derived from Triassic sands. The groundmass is light-firing, similar to the Midlands White Ware fabrics from the site.

Probably roof furniture made alongside Midlands White Ware in Staffordshire.

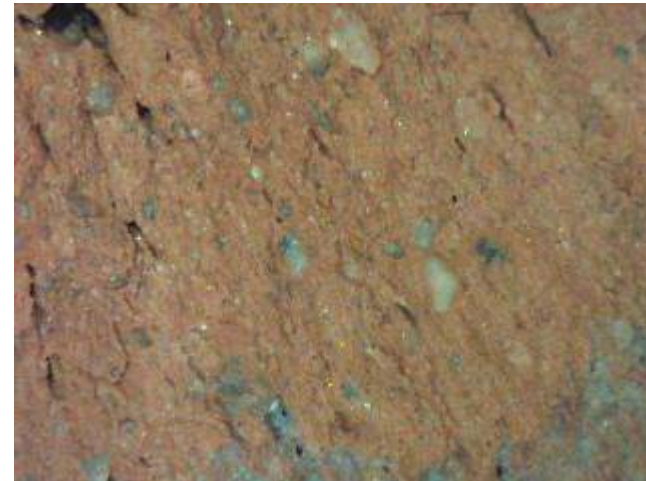


2

FAB 5

As Fabric 1 but finer in texture. The muscovite, in particular, is scattered in the groundmass as well as being present in the moulding sand.

Probably from the same, local?, source as Fabric 1.



177

FAB 6

Refined blackware (cf Black Basalt pottery). The white inlaid slip contains no visible inclusions and is probably a Coal Measures clay (certainly finer in texture than Refined Whitewares such as Pearl Ware, Cream Ware and the like).

Almost certainly these tiles could be assigned to a source and a close date. Similar tiles were produced from the 1840s to the Edwardian period.



6

FAB 7

Very fine textured, well mixed clay. Abundant quartz of silt to very fine sand grade is visible but most of the inclusions are too small to identify at x20 magnification.

Probably Victorian architectural ceramic which could be dated and perhaps sourced with further work.

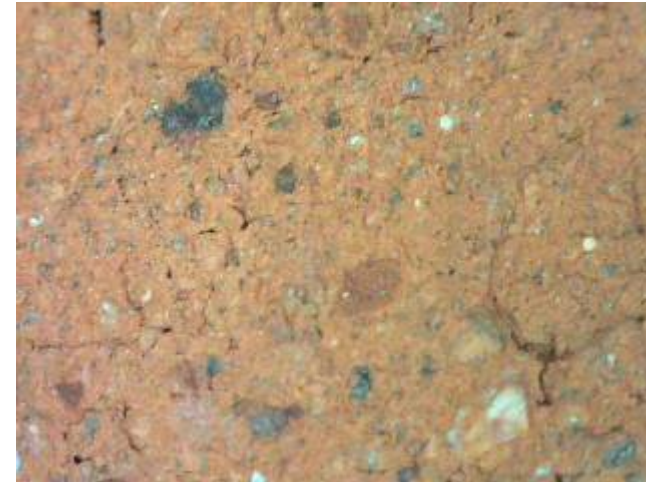


1

FAB 8

Probably a finer version of Fabric 3 but inclusions are too small to be identified by eye.

Probably made from a Coal Measures Redware clay.



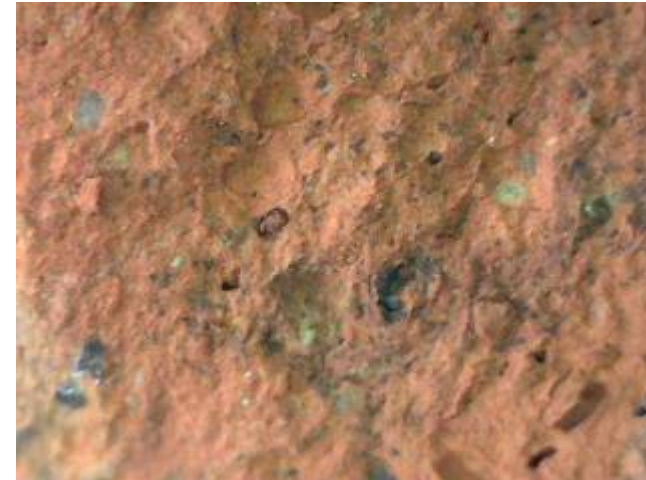
24

FAB 9

Poorly mixed with lenses of pink marl. Moderate subangular quartz up to 1.0mm across and rare fragments of white fine-grained, poorly-cemented sandstone and coarser iron-cemented sandstone.

The tile has a quartzose moulding sand on the base similar to those found throughout the West Midlands (the Potteries southwards and into Gloucestershire).

Perhaps a finer version of Fabric 2? Broadly similar to Canynes-type floor tiles, produced in the Worcester area in the later 15th and early 16th century, but the sandstone inclusions distinguish it (Eames 1951; Vince 1984).



1

FAB 10 Poorly mixed clay, lower fired than remaining fabrics. Moderate subangular quartz sand up to 1.0mm across. Probably local medieval ridge tile.



2

FAB 11 A coarser version of Fabric 2 Probably made from Mercian Mudstone. Identity of sandstone unknown but not a feature of Worcestershire ceramics.



2

DROIT Abundant rounded quartzose sand up to 1.0mm across. Fired to a temperature where the tile breaks through quartz Similar tiles were found in a kiln at Droitwich but probably this is an outlier of an industry

1

grains rather than around them.

based at Worcester (Vince
1984)

Grand Total

273

Forms

Two hundred and seventy three objects could be assigned to a form (Table 3). The most common form was the flat roof tile.

Table 3

Form	Sum of NoV	Sum of Nosh	Sum of Weight
BRICK	28	30	26093
DRAIN/TOILET	1	1	182
FLAT	231	246	21038
FLAT?	2	2	17
FLOOR	3	4	298
RIDGE	1	1	19
WALT	6	6	510
WALT?	1	2	3
Grand Total	273	292	48160

The thickness of the flat roof tiles was measurable in 178 instances and these ranged between 11mm and 20mm. There is no evidence for any difference in thickness between the different fabric groups (Table 4).

Table 4

TH	FAB 1	FAB 2	FAB 4	FAB 5	Grand Total
11			1		1
12			1	10	11
13	2	1		20	23
14	2	2		16	20
15	3	8		36	47
16	3			27	30
17	7	1		12	20
18	2	6		5	13
19				3	3
20	8			1	9
Grand Total	27	18	2	130	178

Most of the fragments were featureless but 22 featured fragments were recorded (Table 5). Most of these were nibbed. The nibs appear to have been formed from an added pad of clay

The Alan Vince Archaeology Consultancy, 25 West Parade, Lincoln, LN1 1NW

<http://www.postex.demon.co.uk/index.html>

A copy of this report is archived online at

<http://www.avac.uklinux.net/potcat/pdfs/avac2007000.pdf>

luted to the tile by pulling the tile upwards into the nib. Two tiles appeared to be either wasters or possible wasters.

Table 5

Description	FAB 1	FAB 2	FAB 5
ANIMAL HOOF PRINT			1
FINGER MARKS	1		
IRON CORRODED ONTO BROKEN EDGE	1		
NIB			1
NIB 22 BY 15; PULLED FROM TOP			1
NIB 25 BY 10			1
NIB 30 BY 15 ADDED CLAY AT TOP OF TILE			1
NIB 35 BY 15 ADDED CLAY		1	
NIB PINCHED FROM BELOW			1
NIB PULLED AND ADDED TO			1
NIB, ADDED CLAY 35 BY 15 AT TOP EDGE OF TILE			1
POSSIBLE WASTER			1
PULLED NIB	1		3
PULLED NIB - BROKEN OFF			1
PULLED NIB AND PATCHED			1
SMOOTH SURFACES			
STRAW MARKS ON TOP			1
TRACES OF NIB		1	
WASTER			1
Grand Total	3	2	16

Twenty eight bricks or fragments of brick were recorded. One of thesea moulded brick with a rectangular frog and moulded cornice, had a measureable length, of 226mm. Four others, all plain bricks of Fabric 8, measured between 237mm and 242mm. Twelve examples had measureable breadths, ranging from 108mm to 120mm (Table 6).

Table 6

Breadth	FAB 11	FAB 7	FAB 8	Grand Total
108			1	1
112			1	1
113			1	1
114			1	1
115	1		1	2
116			2	2
117			1	1

118			1	1
119		1		1
120			1	1
Grand Total	1	1	10	12

Twenty-two fragments had measureable thicknesses, ranging from 48mm to 77mm. With all of these measureable bricks, there are insufficient examples to determine whether the bricks were made to a single size with the measurements following a normal distribution around the mean or whether several sizes were intended. Certainly, the difference in thickness between a 48mm and 77mm brick would require a large amount of mortar to be used to keep the bricks in level rows. Table 8 shows brick thickness grouped according to the probable date of the deposit and this gives some grounds for thinking that there may be chronological differences in thickness although many more samples would be required to test this suggestion.

Table 7

TH	FAB 11	FAB 7	FAB 8	Grand Total
48			1	1
50	1			1
55			3	3
58	1		2	3
59			1	1
60			2	2
62			3	3
69		1		1
75			1	1
77			6	6
Grand Total	2	1	19	22

Table 8

period code	48	50	55	58	59	60	62	69	75	77	Grand Total
LMED	1										1
LMED/EPMED			1				1		1		3
MOD		1	1	2		1	2	1			8
PMED			1	1	1						3
US						1				6	7
Grand Total	1	1	3	3	1	2	3	1	1	6	22

Dating

The use of flat ceramic roof tiles was much earlier in some parts of the West Midlands than others but nowhere is it likely to have been earlier than the mid 12th century. Similar tiles were used throughout the 13th to 17th centuries and it is only in the later 17th century that pantiles replaced nib tiles, and even then nib tiles survived in some areas into the 18th century. The tiles, therefore, have to be dated by their contexts, which is by definition almost always secondary. However, nib tiles are found on this site in deposits which probably date to the later 13th or 14th century. These examples are all in Fabrics 1 and 5 with the exception of two poorly stratified examples of Fabric 2.

Fabric 2 nib tiles first occur on the site in the fill of Ditch 731 and were therefore produced in or before the early 16th century.

There is no apparent difference in the character of the flat tiles from later, mostly early modern, deposits and those from the medieval and later medieval/early post-medieval deposits and it is quite likely that the flat tiles from these later deposits are residual, or perhaps reused.

Coke/shale

A single fragment of coke, formed from partially burnt organic shale, was recovered from a modern deposit, 800.

Copper alloy

A single unstratified copper alloy nail was recorded. It is most likely to be of early modern or later date.

Copper alloy and leather

A fragment of a sheet metal vessel rim, which appears to be strengthening of a leather vessel, was recovered from a modern deposit, 3504.

Industrial waste

A fragment of indeterminate burnt material, recovered from a post-medieval deposit, 1317, is probably industrial waste.

Iron

A nail was recovered from a medieval deposit, 418, and a latch was recovered from a modern deposit, 1409.

Lead

A fragment of lead alloy window came was recovered from a late medieval context, 723. The came was handmade rather than milled and typical of that used in medieval and early post-medieval windows.

Clay Tobacco Pipes

Forty-one fragments of clay tobacco pipe were recovered. All but 11 of these were featureless stem fragments which could be assigned a rough date through examination of their stem bore diameters. Examples probably dating between the late 16th and mid 17th centuries were present (14 in total) but all but one of these came from a later deposit. Late 17th and 18th-century examples also occurred (12 in total) but again most of these came from later deposits. The remaining stems (10 in total) came from early modern or later deposits and could be contemporary with the period of deposition.

Six fragments had some features, but most of these are of little use in dating or other study. Two were undatable fragments of bowl; one was a heel fragment attached to a stem with a late 16th to mid 17th century bore diameter. One was a mouthpiece from a late 18th century or later pipe; one was a bowl from a spurred pipe of late 18th century or later date and one example was a bowl of late 18th or 19th century date.

Plaster

Two fragments of wall plaster were recovered, both coming from late medieval deposits. One of these had light blue paint and the other had cream paint, over layers of whitewash. Neither is typical of late medieval plaster and may be evidence for contamination of the fill of Ditch 731.

Plastic

A single fragment of plastic, similar to that used by builders, was recovered from a modern levelling layer, 3504.

Glassware

Seventeen fragments of glass were recovered. All came from modern deposits but included three fragments of mid 17th to early 18th century date (identified from their curvature and weathering). The remainder included fragments of mid 18th century or later tall dark green bottles; late 19th and early 20th-century codd and egg bottles, with moulded inscriptions (too fragmentary for easy identification) and four fragments of clear or light green glass vessels, probably of 19th or 20th-century date.

Five fragments of window glass were recovered, two of which might be of post-medieval date (light green glass); one of later 17th or 18th-century date (light blue glass) and two of late 18th century or later date (clear glass).

Pottery

Five hundred and twenty-one fragments of pottery were recovered, representing no more than four hundred and thirty-six vessels and weighing 9.057Kg. This material ranged in date from the late 12th to mid 13th centuries to the modern period.

Late 12th to Mid 13th centuries

One hundred and thirty-one sherds of pottery could be assigned to the late 12th to mid 13th centuries. Sixty-two of these came from wheelthrown greyware jars, similar to those produced in the Thames basin in the late 12th to 14th centuries but probably obtained from Deritend, about 17 miles to the south of Lichfield where production waste for this type has been found.

The remaining sixty-nine sherds could not be assigned to a specific ware, without further work, but include 27 sherds which are visually identical to the handmade 12th/13th-century sand-tempered cooking pots produced at Worcester (Vince 1985, HERC1). The remaining 41 sherds, representing no more than 22 vessels, were assigned to nine subfabric groups but require considerable further work to establish their identity.

Table 9

cname	Form	Sum of NoV	Sum of Nosh	Sum of Weight
DERIT	JAR	49	62	652
DERIT Total		49	62	652
MEDLOC	ALB/JUG	1	2	63
	BOWL	1	1	4
	JAR	34	38	575
	JUG	9	23	1049
	JUG/JAR	4	5	76
Grand Total		98	131	2419

Over half of this material was recovered from deposits of post-medieval or later date and is clearly residual. However, a high proportion of these sherds came from buried soil deposits and very little came from the fills of the city ditch, suggesting that these wares had fallen out of use before the first surviving ditch was filled.

Later 13th to 14th centuries

Two hundred and forty-two sherds of Midlands Whiteware (MWW) were recovered. Where these sherds were mainly unglazed and decorated with broad dark red painted lines they were identified as a south Staffordshire variant of Midlands Whiteware, but in reality it is likely that the substantial part of this collection is of south Staffordshire origin (examples are known from sites such as Stafford, Wall and the northern parts of the Birmingham conurbation, noted during the author's postgraduate research in the 1970s, Vince 1984).

A range of vessel forms is represented, often by substantial fragments of the vessel, and these deserve further study (Table 10).

Table 10

cname	Form	Sum of NoV	Sum of Nosh	Sum of Weight
MWW	JAR	92	95	750
	JUG	55	69	1027
	JUG/JAR	46	51	267
	LID	1	1	10
	PIPKIN	1	1	19
	SMALL JAR	1	1	1
	SPOUTED JAR	1	1	7
MWWSS	BALLUSTER JUG	2	2	79
	JUG	18	21	1114

Seventy-five of these sherds come from post-medieval or later deposits where they are residual leaving 168 sherds which could be contemporary with the deposit in which they were found.

Post-medieval

Eighty-nine sherds of post-medieval date were recovered. These range from types which occur at the end of the 15th and into the 16th centuries (Cistercian ware, CSTN; Midlands Purple ware – MP) through types which occur in the later 16th to mid 17th centuries (Midlands Yellow ware – MY; an unidentified post-medieval ware – PMX; and Staffordshire butter pots – STBU) to types which occur in the later 17th to mid 18th centuries, most of which are likely to be of Staffordshire Potteries manufacture (13 miles to the north-northwest), although Ticknall (18 miles to the east) is another possible source. These wares include black-glazed redware vessels (STRE); ed-bodied, white-slip decorated wheelthrown wares (STRES) of mid 17th to early 18th century date; mottled wares (STMO) of late 17th to mid 18th century date; black-glazed vessels made from poorly –mixed Coal Measures clays (STCOAR) of late 17th to mid 18th century or later date; slip-decorated light-bodied wheelthrown wares (STSL) of later 17th to mid 18th century date and white salt-glazed stoneware vessels (SWSG) of mid 18th-century date.

Fragments of Tudor Green ware, probably from the Surrey/Hampshire border (TUDG) and a single fragment of tin-glazed ware (TGW) are the only examples which need not be of fairly local origin.

Table 11

cname	Form	Sum of NoV	Sum of Nosh	Sum of Weight
CSTN	CUP	8	9	53
MP	BOWL	1	1	6

	HANDLED JAR	1	1	131
	JAR	8	10	355
	JUG	3	3	84
	JUG/JAR	4	4	46
	PANC	1	1	99
MY	BOWL	3	3	32
	JAR	1	1	8
PMX	DJ	1	1	3
STBU	BOWL	1	1	14
STCOAR	BOWL	20	21	947
	BOWL?	1	3	3
	FLP	2	2	318
	JAR	1	1	79
	PANC	2	7	246
STMO	BOWL	1	1	19
	POSS	2	2	2
	TANK	2	3	13
STRE	JAR	1	1	2
	POSS	3	3	31
STRES	BOWL	3	3	19
STSL	CUP	2	2	3
SWSG	CHP	1	1	30
	TANK	1	1	1
TGW	ALB	1	1	27
	BOWL	1	2	8
TUDG?	BRAZIER	1	1	17
	CUP	1	1	1
TUDG	CUP	1	1	2
	CUP/CHAFING DISH	1	1	1

Only eight of these sherds come from potentially contemporary deposits whilst the majority come from modern deposits, with a few apparently being intrusive in earlier deposits.

Early Modern and Later

Fifty-three sherds of later 18th century or later date were recorded (Table 12). They include no examples of Creamware (CREA) and therefore the later 18th century is apparently not represented in the collection although the presence of Pearlware (PEAR) indicates the presence of late 18th to mid 19th-century pottery.

Table 12

cname	Full Name	Form	Sum of NoV	Sum of Nosh	Sum of Weight
ENGS	Misc English stoneware	JAR	1	1	3
ENPO	Misc English Porcelain	?	1	1	36
		SINK	1	1	54
GRE	Glazed Red Earthenware	JAR	1	1	19
LPMLOC	Local unglazed red earthenware	FLP	2	2	28
MOD	Misc modern	JUG	1	1	14
NCBW	Buff ware	BOWL	2	2	13
NOTS	Nottingham Stoneware	BOT	1	1	18
		BOWL	1	1	30
PEAR	Pearlware	BOWL	1	1	9
		CUP	4	8	10
		JUG	1	1	2
		PLATE	2	2	5
REFR	Refined redware	TPOT LID	1	1	8
TPW	Transfer-printed ware	BOWL	2	2	7
		JUG	1	1	3
		PLATE	14	24	228
WHITE	Misc Refined Whiteware	BOWL	1	1	26
		CUP	1	1	2
Grand Total			39	53	515

Slag

Eight fragments of probable slag were recovered. These consist of two fragments from a late medieval deposit (723) and six from a modern deposit (711). The latter have a green glassy appearance and are probably of modern date. Given the small quantity of pre-modern material (total weight 70gm) no specialist assessment was sought.

Assessment

Trench 1

The earliest excavated deposit in this trench was a layer of silting or dumping, 120, into which later features were cut. This layer can be dated to the 18th century or later date through the presence of clay pipes and pottery.

The earliest feature to cut this deposit was Ditch 107, also dated by finds to the post-medieval period. This ditch was recut, Ditch 109, and the finds from this too date to the post-medieval period (mid -18th-century or later). Ditch 109 was cut by Gully 101, which also produced post-medieval finds which if the finds from Ditch 109 are secure are probably residual.

Trench 4

The earliest features in Trench 4 to produce finds were four postholes – 408, 410, 414, 419 – and a beam slot 413. These were all sealed by a brick floor, 404, which was overlain by a rubble deposit, 403.

The post-holes and beam slot produced fragments of flat roof tile and medieval pottery, the latest type present being a sherd from a Midlands Purple jug. On this basis, a later 14th or 15th century date is likely, otherwise a later 13th to mid 14th century date would apply.

Three bricks were sampled from the brick floor, one of which was certainly extruded and probably of mid 19th century or later date. A brick from the overlying rubble is cornice-moulded, a type of decoration common in the late 19th and early 20th century.

Trench 6

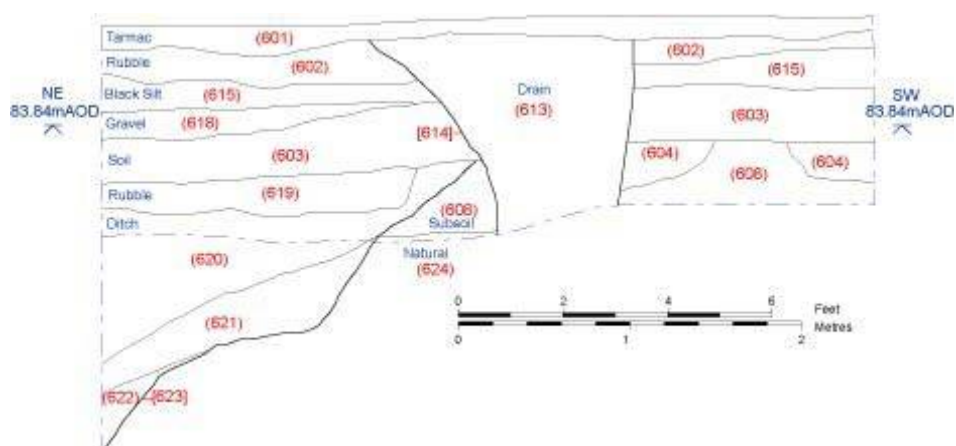


Figure 1

Trench 6 produced finds from the fill of the city ditch, cut 623, and from the fills of a later drain or culvert, 609, and lead water pipe, 605.

Three deposits in the ditch produced finds. The earliest, 622, produced two fragments of flat roof tile. The overlying fill, 621, produced another piece of flat tile, a sherd of Deritend jar and

a sherd of Midlands Purple jar, which probably dates the fill to the later 14th or 15th century, or later. The third fill, 620, included a sherd of Staffordshire Mottled ware which should date the backfill to the later 17th century or later. Ignoring this sherd, the next latest type is two sherds of Midlands Yellow ware, which would date the fill to the mid 17th century or later.

Trench 7

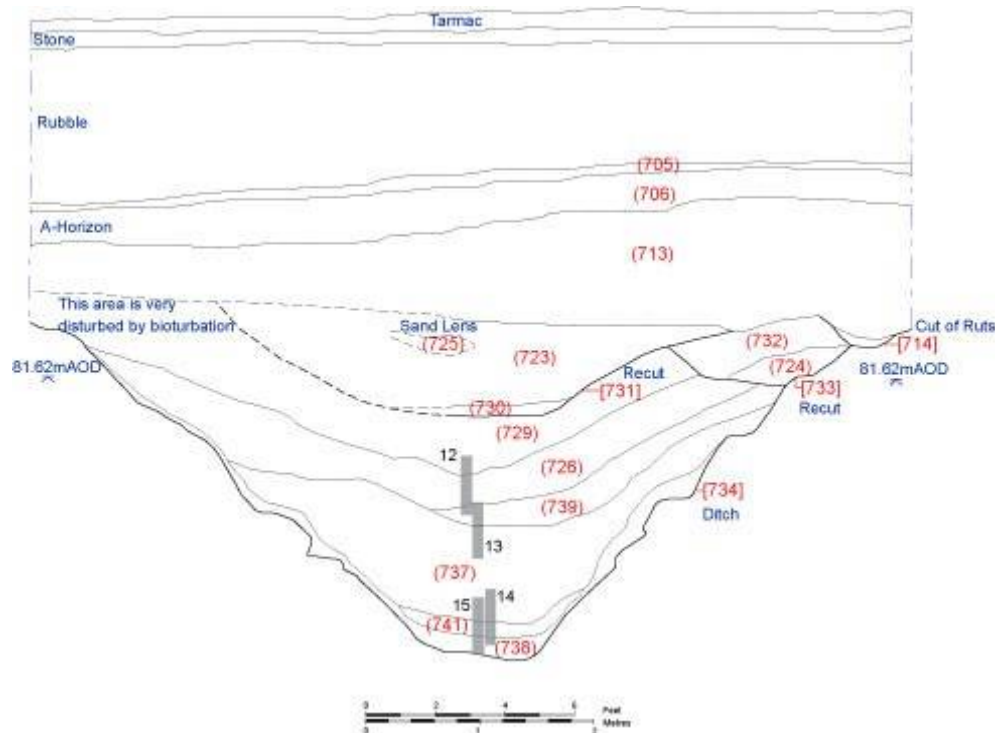


Figure 2

Trench 5 included a section across the city ditch which revealed three successive cuts (Fig 2). The earliest of these was Ditch 734, which was recut as ditch 733, which was itself recut as Ditch 731. The ditch was then covered by a buried soil which was covered by rubble deposits.

Ditch 734 produced finds from its primary fill, 736, the second fill, 737, and the 5th fill (separated into undisturbed, 726, and disturbed by animals, 736).

The primary fill produced a single of 12th to 13th-century date but the second fill produced solely Midlands Whiteware, none of which had red-painted decoration. A later 13th or 14th-century date is likely for this. The 5th fill produced a pottery assemblage dominated by Midlands Whiteware, with red-painted, sparse- or unglazed examples.

Ditch 733 produced just a single fragment of flat roof tile and Ditch 731 produced mainly medieval pottery and flat roof tile with a small quantity of later finds. The only pottery types not found in the earlier ditch fills consist of a sherd of Tudor Green ware cup or chafing dish and a Midlands Purple ware vessel. Both types could be present in the later 14th century but were still current much later. The other finds include flat tile of similar character to that from the earlier ditches; the fragment of lead window came; the Fabric 10 floor tile; Fabric 2 flat

roof tiles; a fragment of Fabric 8 brick; the two plaster fragments and the iron slag. All of these later types come from the second fill of the ditch and may either give the date of its filling or represent material intruded into the ditch fill from the overlying buried soil. Probably, the finds come from both sources and the ditch was filled in the later 15th or early 16th century but was then contaminated by early modern material (19th century or later).

The overlying buried soil produced finds from various contexts (706, 712, 713, 713 spit 4, 715, 715 TP1 and TP3, 717, 719 and 743). All contained a similar range of finds: late and early post-medieval pottery and ceramic building material; 19th-century pottery (from context 706 only); late 18th century or later clay pipes (from contexts 712 and 715) and a single fragment of brick (from context 719). These finds suggest that the ditch was levelled and a soil developed over its site by the 16th or 17th century.

The overlying dumps, 710 and 711, produced 19th-century clay pipes and "modern" slag.

Trench 8

Trench 8 produced finds from the fill of a posthole, 803; subsoil and topsoil.

All of these deposits produced sherds of medieval pottery of later 12th to mid 13th and late 13th to 14th-century date. The posthole fill, 802, produced a fragment of 19th-century clay pipe. The subsoil, 801, produced a fragment of Fabric 2 roof tile, which probably dates to the later medieval or early post-medieval period whilst the topsoil, 800, produced 19th-century finds.

Trench 9

A buried soil in Trench 9, 905, produced an assemblage of later 13th to mid 14th-century pottery.

Trench 13

Finds were recovered from a shallow scoop, 1316, cutting natural subsoil; cut 1324; robber trench 1320 which cut 1324 and gully 1318 which cut the robber trench.

The fill of the scoop produced a mixture of medieval and post-medieval finds. The latest type present is a clay pipe stem with a probable 18th-century bore diameter but without this find the next latest types are still of later 17th century or later date.

Cut 1324 also produced a mixture of residual medieval finds and post-medieval pottery and clay pipes. A later 17th-century or later date is probably for the fill of this feature. The robber trench fill produced a sherd of medieval pot, brick and flat roof tile. The finds cannot be closely dated but are quite possibly of 17th century date. Finally, the fill of Gully 1318 produced an assemblage of medieval pot and tile which must be entirely residual if the relationship with the robber trench is correctly interpreted.

Trench 14

The earliest deposit in Trench 14 to produce finds was Pit 1412 which was sealed by a buried soil. This soil was cut by another pit, 1408. This was also sealed by a second buried soil, which was cut by the foundation of the school present on the site until the 1970s (Foundation 1410). The only other feature to produced finds was the fill of a modern drain, 1403.

Pit 1412 produced sherds of Midlands Whiteware and is therefore of later 13th or 14th century or later date. The overlying buried soil, 1406, also produced similar pottery. Pit 1408 produced a fragment of 19th-century or later drain or toilet and fragments of modern unglazed wall tile were recovered from the fill of foundation 1410. The finds from the fill of drain 1403 are of 19th-century date and therefore probably residual.

Trench 15

The earliest deposit in Trench 15 to produce finds was a buried soil which was covered by a make-up deposit over which was a second buried soil.

The finds from the first buried soil, 1503 and 1504, consist of a mixture of later 12th to mid 13th century and late 13th to 14th-century pottery and flat roof tile. The make-up deposit, 1501, produced two sherds of later 17th century or later date and the overlying buried soil, 1500, includes finds of medieval, post-medieval and 19th-century or later date (transfer printed ware and a 19th century or later wall tile).

Trench 16

Finds were recovered from the fills of a series of stanchion pits.

Thirteen finds were recovered in total and these range in date from the medieval to the early modern periods. The latest finds, from Pits 1 and 4, are all of 19th-century or later date, probably later than c.1850.

Trench 19

Finds were recovered from a buried soil, 1903.

These finds are all of medieval date, probably later 13th or 14th century, apart from a single fragment of brick of Fabric 8.

Trench 21

Finds were recovered from a buried soil, 2106.

These consist of fragments of flat roof tile, probably of later 13th or 14th century or later date.

Trench 25

Finds were recovered from wall 2507.

These finds (from context 2505) consist of a mixture of medieval, post-medieval and early modern material. The latest type present is a 19th-century clay pipe stem.

Trench 26

Finds were recovered from tarmac 2605. All are of early modern, probably 20th century, date.

Trench 35

The earliest deposit to produce finds in Trench 35 was a silty clay levelling layer, 3502, which was buried under a layer of rubble, 3502.

The clay layer produced a fragment of plastic which probably dates its deposition to the second half of the 20th century or later and all the finds from this layer and the overlying rubble are of 19th-century or later date.

Trench 36

Finds were recovered from three tips of silty sand, 3605, 3606 and 3607. All three produced a similar mixture of medieval, post-medieval and modern finds. The latest type is a late 19th or early 20th-century bottle from 3605 but 19th-century finds occur in all three deposits.

Archaeological Potential of the Birmingham Road finds

In the author's experience it is quite rare to find large assemblages of medieval and later medieval date which are not heavily contaminated with residual finds. This gives the material from Birmingham Road considerable importance, in that finds which cannot be closely dated by their intrinsic characteristics, such as the ceramic building material, can be dated by association. It was noted that concentrations of earlier medieval pottery (DERIT and MEDLOC) are not associated with flat roof tiles but that wherever Midlands Whiteware sherds occur in quantity it is normal to find flat roof tiles of Fabrics 1 and 5. The best example of this is the fill of the first surviving city ditch in Trench 7, Ditch 734. Documenting and studying this material in further detail therefore has a high potential. The material from Ditches 733 and 731, by contrast, do not contain such clear evidence because of the probability of both residuality and contamination. Nevertheless, the finds do form a second large and more or less coherent assemblage.

The site has not produced many useful post-medieval assemblages and almost all the post-medieval finds are from later deposits. These later deposits are probably of 19th and 20th century date and their study will do little to further knowledge of material culture in Lichfield in the preceding century and a half.

Further work

It is to be hoped that further work takes place on this site and that larger assemblages of finds can be recovered, taking into account the importance of recognising and documenting

potentially intrusive material. Given the hope that further larger and even better assemblages can be excavated it is probably premature to spend resources on the current site's finds. However, there is at least one exception to this conclusion. If the ceramic building material can be reliably dated then it might be possible to record and discard material on-site without the cost of washing, marking and transportation. It is therefore recommended that samples of medieval and later medieval brick and tile fabrics are analysed using thin section and chemical analysis and that these studies are used to provide a simple procedure for recording and discarding future finds of flat roof tile and handmade bricks.

Should no further work take place on the site, however, then the medieval pottery assemblages recovered from this evaluation would be well worth illustration and fabric analysis. Various finds (totalling 7 objects) have been identified in the catalogue as being worthy of illustration but this total should be expanded if no further work takes place.

Costing

Task	Description	Cost	VAT
1	Thin section analysis of an example of each CBM fabric	£286.00	£50.05
2	Chemical analysis of six examples of each CBM fabric (where available)	£962.00	£168.35
3	Illustration of selected vessels	£140	£24.50
4	Production of revised report based on results of tasks 1 to 3	£412.00	£72.10
Total		£1800.00	£315.00

Retention

All of the medieval finds should be retained for future study. Post-medieval and later from 19th- and 20th-century deposits could be discarded whilst the medieval pottery and ceramic building material from these deposits could be reduced in quantity by discarding small featureless body sherds and brick and tile fragments.

Bibliography

Eames, E. (1951) "The Canynges Pavement." *J Brit Archaeol Ass* , 3rd ser, XIV, 33-46

Vince, A. G. (1984) *The Medieval Ceramic Industry of the Severn Valley*. University of Southampton, Unpublished PhD thesis

Vince, A. G. (1985) "Part 2: the ceramic finds." in R. Shoesmith, ed., *Hereford City Excavations: Volume 3. The Finds*, CBA Research Report 56 The Council for British Archaeology, London

Appendix 1

Context	DN	class	cname	Form	subfabric	Action	Description	Part	Nosh	NoV	Weight	Condition	Use	L	B	TH
Trench 1																
100	0	POTTERY	DERIT	JAR				BS	1	1	9					
100	0	POTTERY	DERIT	JAR				R	1	1	4					
100	0	CBM	MTIL	FLAT	FAB 2			BS	1	1	104					
100	0	CBM	MTIL	FLAT	FAB 5			BS	1	1	384					
100	0	CBM	PMTIL	BRICK	FAB 8		SLIGHT FROG?	BS	1	1	1140		CHIPPED SURFACE ON BACK; MORTAR PATCHES ON FRONT	116	60	
100	0	CBM	PMTIL	BRICK	FAB 8			BS	1	1	76					
100	0	PIPECLAY	PIPECLAY	CLAYPIPE			18/19 CENTURY BORE	STEM	1	1	1					
100	0	PMGL	PMGLAS	SHAFT&GLOBE /MALLET	DKGR			BS	1	1	3					
100	0	POTTERY	STMO	TANK			HORIZ RIDGES	B	2	1	12					
100	0	POTTERY	STRES	BOWL			WHITE SLIP DEC	BS	1	1	4					
104	0	CBM	MTIL	FLAT	FAB 1		FRAG	BS	1	1	8					
108	0	CBM	MTIL	FLAT	FAB 5			BS	1	1	206					16
108	0	PMGL	PMGLAS	SHAFT&GLOBE /MALLET	DKGR			BS	1	1	59					
108	0	CBM	MTIL	FLAT	FAB 1	FAB 1		BS	1	1	159					17
108	0	CBM	PMTIL	BRICK	FAB 11			BS	1	1	929				115	50
108	0	PIPECLAY	PIPECLAY	CLAYPIPE			FRAG	BOWL	1	1	1					
108	0	PIPECLAY	PIPECLAY	CLAYPIPE			18 CENTURY BORE	STEM	2	2	2					

The Alan Vince Archaeology Consultancy, 25 West Parade, Lincoln, LN1 1NW

<http://www.postex.demon.co.uk/index.html>

A copy of this report is archived online at

<http://www.avac.uklinux.net/potcat/pdfs/avac2007000.pdf>

AVAC Report 2007/

Context	DN	class	cname	Form	subfabric	Action	Description	Part	Nosh	NoV	Weight	Condition	Use	L	B	TH
108	0	CBM	MTIL	FLAT	FAB 2			BS	1	1	70					18
108	0	POTTERY	STCOAR	BOWL				BS	2	2	57					
108	0	POTTERY	STSL	CUP				BS	1	1	1					
110	0	CBM	PMTIL	BRICK	FAB 8			BS	1	1	137		BURNT ALONG ONE SIDE; MORTAR ON TOP SURFACE			62
110	0	CBM	PMTIL	BRICK	FAB 8			BS	1	1	372					62
110	0	CBM	MTIL	FLAT	FAB 5		NIB 22 BY 15; PULLED FROM TOP	BS	1	1	205					16
110	0	PMGL	PMGLAS	TALL	DKGR			BS	1	1	19					
110	0	POTTERY	STCOAR	BOWL				BS	2	2	61					
110	0	POTTERY	STMO	TANK				BS	1	1	1					
110	0	POTTERY	SWSG	TANK				BS	1	1	1					
120	0	POTTERY	MP	BOWL			FLANGED BOWL	R	1	1	6					
120	0	POTTERY	STBU	BOWL				BS	1	1	14					
120	0	PIPECLAY	PIPECLAY	CLAYPIPE			17 CENTURY BORE	STEM	1	1	2					
120	0	PMGL	PMGLAS	WIND	LTGR			BS	1	1	2					1
120	0	PIPECLAY	PIPECLAY	CLAYPIPE			18 CENTURY BORE	STEM	2	2	6					
120	0	POTTERY	STCOAR	BOWL				B	1	1	53					
120	0	POTTERY	STCOAR	FLP			UNGLAZED; THUMBED CORDON UNDER RIM	R	1	1	267					
120	0	CBM	PMTIL	BRICK	FAB 8			BS	1	1	2737	SALT SURFACING		242	118	58
120	0	CBM	PMTIL	BRICK	FAB 8			BS	1	1	200					58
120	0	CBM	PMTIL	BRICK	FAB 8			BS	1	1	561				120	
120	0	POTTERY	STCOAR	BOWL				R	1	1	382					
120	0	POTTERY	STRE	POSS				H	1	1	13					

AVAC Report 2007/

Context	DN	class	cname	Form	subfabric	Action	Description	Part	Nosh	NoV	Weight	Condition	Use	L	B	TH
120	0	POTTERY	STRE	POSS			TRACE OF HANDLE SCAR	BS	1	1	16					
Trench 4																
403	0	CBM	VICTORIAN	BRICK	FAB 7	FAB 7	FROGGED TOP; MOULDED SIDE	NEAR WHOLE	1	1	2403	SOME MORTAR		226	119	69
403	0	ZDATE					L18+	BS	1	1	0					
404	0	ZDATE					L16+	BS	1	1	0					
404	0	CBM	PMTIL	BRICK	FAB 8	FAB 8		BS	1	1	2055				108	75
404	0	CBM	PMTIL	BRICK	FAB 8			NEAR WHOLE	3	1	2885	BATTERED	MORTAR TOP/BOTTOM	238	116	62
404	0	CBM	PMTIL	BRICK	FAB 8			WHOLE	1	1	3577	FRESH FROM WALL WITH CONCRETE0	MORTAR 5 SIDES; BLACKENED FACE	238	113	55
407	0	POTTERY	MEDLOC	JAR	4		KNIFE TRIMMING	BS	2	1	63					
407	0	POTTERY	MEDLOC	JUG/JAR	1			BS	1	1	1					
407	0	POTTERY	MEDLOC	JAR	3			R;BS	3	1	11					
407	0	POTTERY	MWW	JUG			GREEN GLAZE	BS	1	1	1					
407	0	POTTERY	MWW	JUG	FINE		DARK GLAZE EXT	BS	1	1	15					
407	0	POTTERY	MWW	JAR				BS	8	8	38		SOOTED EXT			
407	0	POTTERY	MWW	JUG/JAR				BS	5	5	26					
407	0	POTTERY	MWW	JUG				BS	1	1	1					
407	0	POTTERY	MWW	JAR				R	1	1	20					
407	0	POTTERY	MWW	JAR				R	1	1	1					
407	0	CBM	MTIL	FLAT	FAB 5		FRAG	BS	1	1	2					
407	0	ZDATE					L13+	BS	1	1	0					
409	0	POTTERY	MEDLOC	JAR	2			BS	1	1	5					
409	0	POTTERY	MEDLOC	JUG	1			R	2	1	4					
409	0	POTTERY	MP	JUG				BS	1	1	1					
409	0	POTTERY	MWW	JUG	FINE		DARK GLAZE EXT	BS	2	1	10					

AVAC Report 2007/

Context	DN	class	cname	Form	subfabric	Action	Description	Part	Nosh	NoV	Weight	Condition	Use	L	B	TH
409	0	POTTERY	MWW	JAR	FINE			BS	4	4	17					
409	0	POTTERY	MWW	JUG	FINE		GROOVES; DARK GLAZE EXT	BS	1	1	1					
409	0	POTTERY	MWW	JUG			GREEN GLAZE	BS	3	1	19					
409	0	POTTERY	MWW	JAR				R	1	1	20					
409	0	POTTERY	MWW	JAR				BS	1	1	4		WHITE DEP INT			
409	0	POTTERY	MWWSS	BALLUSTER JUG			RED SLIP DRIBBLES	B	1	1	26		SOOTED EXT			
409	0	CBM	MTIL	FLAT	FAB 1		IRON CORRODED ONTO BROKEN EDGE	BS	1	1	50					17
409	0	ZDATE					L13+	BS	1	1	0					
412	0	POTTERY	MEDLOC	JAR	1			BS	1	1	1					
412	0	ZDATE					L12+	BS	1	1	0					
412	0	CBM	MTIL	FLAT	FAB 5		FRAG	BS	1	1	1					
414	0	POTTERY	MWW	JAR				B	1	1	24		HEAVILY SOOTED BASE			
414	0	ZDATE					L13+	BS	1	1	0					
418	0	POTTERY	MWW	JAR				BS	1	1	1		DARK DEP INT			
418	0	POTTERY	MWW	JUG/JAR				BS	9	6	13					
418	0	POTTERY	MWW	JAR				B	1	1	12		SOOTED EXT			
418	0	POTTERY	MWW	JAR				BS	13	12	29		SOOTED EXT			
418	0	POTTERY	MWW	JUG			GLAZE EXT	BS	1	1	8					
418	0	POTTERY	MWWSS	JUG			RED SLIP DEC	BS	1	1	1					
418	0	ZDATE					L13+	BS	1	1	0					
418	0	CBM	MTIL	FLAT	FAB 5		FRAG	BS	2	1	3					
418	0	IRON	IRON	NAIL?				BS	1	1	9					
Trench																
6																
606	0	POTTERY	CSTN	CUP				BS	1	1	6					
606	0	POTTERY	STCOAR	BOWL				BS	2	2	72					

AVAC Report 2007/

Context	DN	class	cname	Form	subfabric	Action	Description	Part	Nosh	NoV	Weight	Condition	Use	L	B	TH
606	0	POTTERY	STCOAR	BOWL			SHL=607	B;BS	2	1	34					
606	0	POTTERY	STRE	POSS				BS	1	1	2					
606	0	POTTERY	STRES	BOWL			WHITE SLIP DEC	BS	1	1	8					
606	0	POTTERY	TGW	BOWL			WHITE GLAZE	BS	2	1	8					
606	0	PMGL	PMGLAS	SHAFT/GLOBE/MALLET	DKGR			BS	1	1	18					
606	0	PMGL	PMGLAS	WIND	LTGR			BS	1	1	1					1
606	0	PIPECLAY	PIPECLAY	CLAYPIPE			17 CENTURY BORE	STEM	3	3	9					
606	0	CBM	MTIL	FLAT	FAB 2	FAB 2		BS	1	1	390					15
606	0	CBM	MTIL	FLAT	FAB 5			BS	1	1	111					19
606	0	CBM	MTIL	FLAT	FAB 5			BS	1	1	42					18
606	0	CBM	MTIL	FLAT	FAB 5			BS	1	1	145					16
607	0	CBM	PMTIL	BRICK	FAB 8			BS	1	1	2938	SOME SALT SURFACING		237	112	55
607	0	POTTERY	STCOAR	BOWL			SHL=606	B	1	1	31					
620	0	POTTERY	CSTN	CUP				BS	1	1	4					
620	0	CBM	MTIL	FLAT	FAB 2			BS	2	1	1175	SALT SURFACING TOP	PATCHES MORTAR		181	15
620	0	POTTERY	MWWSS	JUG			RED SLIP	BS	2	1	16					
620	0	POTTERY	MY	BOWL				R	1	1	16					
620	0	POTTERY	MY	JAR				BS	1	1	8					
620	0	POTTERY	STMO	BOWL				BS	1	1	19					
621	0	POTTERY	DERIT	JAR				BS	1	1	19					
621	0	POTTERY	MP	JAR				BS	1	1	80					
621	0	CBM	MTIL	FLAT	FAB 5			BS	1	1	199		MORTAR PATCH ON BACK			12
622	0	CBM	MTIL	FLAT?	FAB 5		FRAGS	BS	2	2	17					
622	0	CBM	MTIL	FLAT	FAB 5			BS	1	1	113					15

Trench
7

AVAC Report 2007/

Context	DN	class	cname	Form	subfabric	Action	Description	Part	Nosh	NoV	Weight	Condition	Use	L	B	TH
706	0	POTTERY	DERIT	JAR				BS	1	1	3					
706	0	POTTERY	MEDLOC	JUG	5			BS	2	1	28					
706	0	POTTERY	MP	JAR				R	1	1	147					
706	0	POTTERY	MP	JAR			DRIBBLE OF GLAZE INT	BS	1	1	30					
706	0	POTTERY	MP	JUG			STRAP HANDLE WITH CENTRAL GROOVE, 41 ACROSS	H	1	1	73					
706	0	ZDATE					L19TH	BS	1	1	0					
706	0	ZDATE					L18+	BS	1	1	0					
706	0	POTTERY	MWW	JUG/JAR			SPOT GLAZE EXT	BS	1	1	8					
706	0	POTTERY	MWW	JUG/JAR				BS	1	1	5					
706	0	PMGL	PMGL	COD BOTTLE	LTGR		'...ATER' '...TON' '...SH'	BASE	1	1	128					
706	0	PMGL	PMGL	TALL	DKGR			BS	1	1	2					
706	0	POTTERY	MWW	JUG			GREEN GLAZE EXT, PULLED SPOUT	R	1	1	15					
706	0	CBM	MTIL	FLAT	FAB 1		FRAG	BS	1	1	6					
706	0	CBM	MTIL	FLAT	FAB 5			BS	1	1	73					15
706	0	CBM	MTIL	FLAT	FAB 5		PULLED NIB	BS	2	1	239					17
706	0	POTTERY	MWWSS	JUG			POSS RED SLIP	BS	1	1	2					
706	0	POTTERY	PEAR	JUG				BS	1	1	2					
706	0	POTTERY	PEAR	PLATE				BS	1	1	2					
706	0	POTTERY	STCOAR	BOWL				BS	1	1	10					
706	0	POTTERY	STCOAR	BOWL				BS	1	1	5					
706	0	POTTERY	TPW	PLATE				R	2	1	12					
710	0	ZDATE					L16+	BS	1	1	0					
710	0	CBM	MTIL	FLAT	FAB 5		FRAG	BS	1	1	40					
710	0	POTTERY	STCOAR	FLP				R	1	1	51					

AVAC Report 2007/

Context	DN	class	cname	Form	subfabric	Action	Description	Part	Nosh	NoV	Weight	Condition	Use	L	B	TH
711	0	POTTERY	MP	JAR				BS	3	1	8					
711	0	CBM	MTIL	FLAT	FAB 5			BS	1	1	21					15
711	0	CBM	MTIL	FLAT	FAB 1			BS	1	1	116					14
711	0	SLAG	SLAG	SLAG			GREEN COLOUR	BS	6	1	64					
711	0	PIPECLAY	PIPECLAY	CLAYPIPE			19TH CENTURY BORE	STEM	1	1	2					
711	0	ZDATE					L18+	BS	1	1	0					
712	0	ZDATE					L18+	BS	1	1	0					
712	0	PIPECLAY	PIPECLAY	CLAYPIPE			18-19TH CENTURY BORE	STEM	1	1	2					
712	0	PIPECLAY	PIPECLAY	CLAYPIPE			17-18TH CENTURY BORE	STEM	1	1	1					
712	0	PIPECLAY	PIPECLAY	CLAYPIPE			LATE 18TH CENTURY PLUS FORM	BOWL/SPUR/STEM	1	1	8					
712	0	ZDATE					L13+	BS	1	1	0					
712	0	POTTERY	MWW	JUG	FINE		GLAZE EXT	BS	1	1	10					
712	0	POTTERY	SWSG	CHP				B	1	1	30					
713	0	POTTERY	CSTN	CUP			STRAP HANDLE, 11 ACROSS	H	1	1	2					
713	0	POTTERY	CSTN	CUP				R	1	1	1					
713	0	POTTERY	CSTN	CUP				BS	1	1	10					
713	0	POTTERY	DERIT	JAR				R	1	1	7					
713	0	POTTERY	DERIT	JAR				R	2	1	13					
713	0	POTTERY	MP	JAR				BS	1	1	12					
713	0	POTTERY	MP	HANDLED JAR			STRAP HANDLE 45 ACROSS	R/H	1	1	131					
713	0	POTTERY	MP	PANC				R	1	1	99					
713	0	ZDATE					E16+	BS	1	1	0					
713	0	CBM	MTIL	FLAT?	FAB 4			BS	1	1	31					11
713	3	POTTERY	MWW	LID		DR	GLAZED TOP	R	1	1	10					

AVAC Report 2007/

Context	DN	class	cname	Form	subfabric	Action	Description	Part	Nosh	NoV	Weight	Condition	Use	L	B	TH
713	0	POTTERY	MWW	JUG/JAR				BS	8	8	25					
713	0	POTTERY	MWW	JAR				BS	3	3	7		SOOTED EXT			
713	0	POTTERY	MWW	JUG			GLAZE EXT	BS	1	1	2					
713	0	POTTERY	MWW	JAR				R	1	1	8					
713	0	POTTERY	MWW	JUG			GLAZE INT	BS	1	1	14					
713	0	POTTERY	MWW	JUG/JAR			GLAZE INT	B	1	1	16		SOOTED EXT			
713	0	CBM	MTIL	FLAT	FAB 5			BS	1	1	76					15
713	0	CBM	MTIL	FLAT?	FAB 4	FAB 4		BS	1	1	56					12
713	0	CBM	MTIL	FLAT	FAB 1			BS	1	1	131					17
713	0	CBM	MTIL	FLAT	FAB 1		PULLED NIB	BS	1	1	109					15
713	0	CBM	MTIL	FLAT	FAB 5			BS	1	1	348	SALT SURFACING ON UPPER SURFACE				16
713	0	CBM	MTIL	FLAT	FAB 5			BS	1	1	262	SALT SURFACING ON UPPER SURFACE				16
713	0	CBM	MTIL	FLAT	FAB 5			BS	1	1	159					14
713	0	CBM	MTIL	FLAT	FAB 5		ANIMAL HOOF PRINT	BS	1	1	110					14
713	0	CBM	MTIL	FLAT	FAB 5			BS	1	1	111					16
713	0	CBM	MTIL	FLAT	FAB 5			BS	2	1	68					15
713	0	CBM	MTIL	FLAT	FAB 5			BS	1	1	178					16
713	0	POTTERY	MWWSS	JUG			RED SLIP EXTENT	BS	1	1	6					
713	0	POTTERY	MWWSS	JUG			DRIBBLES OF RED SLIP	B	1	1	179					
713	0	POTTERY	STCOAR	BOWL				BS	1	1	27					
713	0	POTTERY	TUDG?	CUP				BS	1	1	1					
715	0	POTTERY	CSTN	CUP			STRAP HANDLE 10 ACROSS	H/BS	2	1	15					
715	0	POTTERY	CSTN	CUP				B	1	1	13	OVERFIRED;				

AVAC Report 2007/

Context	DN	class	cname	Form	subfabric	Action	Description	Part	Nosh	NoV	Weight	Condition FRIED GLAZE	Use	L	B	TH
715	0	POTTERY	MEDLOC	ALB/JUG	6		DARK GLAZE EXT; STRAIGHT SIDES	BS	2	1	63					
715	0	POTTERY	MEDLOC	JUG	1		GLAZED EXT	BS	1	1	11	BONFIRE SOOTED				
715	0	POTTERY	MEDLOC	JUG	1		GLAZED EXT	BS	1	1	3					
715	0	POTTERY	MEDLOC	JUG/JAR	1		GLAZED INT, KNIFE TRIMMED SIDE AND BASE	B	1	1	16					
715	0	POTTERY	MEDLOC	JUG/JAR	1			BS	1	1	8					
715	0	POTTERY	MEDLOC	JAR	1			BS	1	1	14		SOOTED EXT			
715	0	POTTERY	MEDLOC	JUG/JAR	1			B	2	1	51					
715	0	POTTERY	MEDLOC	BOWL	9			BS	1	1	4					
715	0	POTTERY	MP	JUG/JAR			DARK GLAZE INT	B	1	1	25		SOOTED EXT			
715	0	POTTERY	MP	JAR			FRAG	BS	1	1	1					
715	0	PIPECLAY	PIPECLAY	CLAYPIPE			18-19TH CENTURY BORE	STEM	1	1	1					
715	0	CBM	MTIL	FLOOR	DROIT		DARK GLAZE	BS	1	1	141		SOME WEAR			38
715	0	CBM	MTIL	FLAT	FAB 5			BS	1	1	124					17
715	0	CBM	MTIL	FLAT	FAB 2	FAB 11		BS	2	1	279					18
715	0	CBM	MTIL	FLAT	FAB 5			BS	1	1	61					14
715	0	CBM	MTIL	FLAT	FAB 5		FRAGS	BS	2	2	40					
715	0	CBM	MTIL	FLAT	FAB 5			BS	1	1	18					15
715	0	CBM	MTIL	FLAT	FAB 5			BS	1	1	21					16
715	0	CBM	MTIL	FLAT	FAB 5			BS	1	1	15					15
715	0	CBM	MTIL	RIDGE	FAB 10	FAB 10	GLAZE	BS	1	1	19	SOIL DEP				12
715	0	CBM	MTIL	FLAT	FAB 1			BS	1	1	88	SOME SALTSURFACING				17
715	0	CBM	MTIL	FLAT	FAB 1			BS	1	1	114	SOME SALTSURFACING				18
715	0	ZDATE					L18+	BS	1	1	0					

AVAC Report 2007/

Context	DN	class	cname	Form	subfabric	Action	Description	Part	Nosh	NoV	Weight	Condition	Use	L	B	TH
715	0	POTTERY	MWW	JUG			PALE GREEN GLAZE EXT	BS	1	1	15					
715	0	POTTERY	MWW	JUG			SPOTS GREEN GLAZE EXT	BS	4	4	21					
715	0	POTTERY	MWW	JUG			DRIBBLES OF GREEN GLAZE EXT	BS	1	1	4					
715	0	POTTERY	MWW	JUG			GREEN GLAZE EXT; WAVY COMBING	BS	1	1	4					
715	0	POTTERY	MWW	JUG			GREEN GLAZE EXT; GROOVES ROUND SHOULDER, WAVY LINES BELOW	BS	1	1	5					
715	0	POTTERY	MWW	JUG			DARK GREEN GLAZE EXT; GROOVES ROUND SHOULDER	BS	2	1	2					
715	0	POTTERY	MWW	JUG/JAR				BS	4	4	18					
715	0	POTTERY	MWW	JAR				R	1	1	4					
715	0	POTTERY	MWW	JAR				R	1	1	11		SOOTED EXT			
715	0	POTTERY	MWW	JAR				R	1	1	7					
715	0	POTTERY	MWW	JAR				BS	1	1	5		SOOTED EXT			
715	0	POTTERY	MWW	JAR			GLAZE INT	BS	1	1	7		HEAVY SOOTING EXT			
715	2	POTTERY	MWW	JUG		DR	STRAP HANDLE, 36 ACROSS, WITH CENTRAL RIDGE AND FEATHERED SLASHING DOWN EACH SIDE	R/H	1	1	114					
715	0	CBM	MTIL	FLAT		FAB 5	POSSIBLE WASTER	BS	1	1	149	OVERFIRED				16
715	0	CBM	MTIL	FLAT		FAB 5		BS	1	1	148					15

AVAC Report 2007/

Context	DN	class	cname	Form	subfabric	Action	Description	Part	Nosh	NoV	Weight	Condition	Use	L	B	TH	
715	0	CBM	MTIL	FLAT	FAB 5		PULLED NIB - BROKEN OFF	BS	1	1	146						18
715	0	CBM	MTIL	FLAT	FAB 5			BS	1	1	80						17
715	0	CBM	MTIL	FLAT	FAB 5			BS	1	1	90						15
715	0	CBM	MTIL	FLAT	FAB 1			BS	1	1	114	SOME SALTSURFACING					17
715	0	CBM	MTIL	FLAT	FAB 1			BS	1	1	88	SOME SALTSURFACING					18
715	0	CBM	MTIL	FLAT	FAB 5			BS	1	1	132						16
715	0	CBM	MTIL	FLAT	FAB 5			BS	1	1	91						13
715	0	POTTERY	MWWSS	JUG			TRACES OF RED SLIP, STRAP HANDLE	H	1	1	8						
715	0	POTTERY	MWWSS	JUG			RED SLIP	BS	3	1	5						
715	0	POTTERY	TUDG	CUP				BS	1	1	2						
715	1	POTTERY	TUDG?	BRAZIER		DR; TS; ICPS	KNIFE CUT OPENING; KILN SCAR ON BASE	B	1	1	17						
717	0	POTTERY	MP	JAR			GLAZE INT	BS	1	1	45		SOOTED EXT				
717	0	POTTERY	STCOAR	JAR			GLAZE INT/EXT	BS	1	1	79						
717	0	CBM	MTIL	FLAT	FAB 1			BS	1	1	71						20
717	0	CBM	MTIL	FLAT	FAB 5		NIB PINCHED FROM BELOW	BS	1	1	169						13
717	0	CBM	MTIL	FLAT	FAB 2			BS	1	1	118						18
717	0	CBM	MTIL	FLAT	FAB 5		NIB PULLED AND ADDED TO	BS	1	1	140						15
717	0	CBM	MTIL	FLAT	FAB 5			BS	1	1	135						16
717	0	CBM	MTIL	FLAT	FAB 5			BS	1	1	57						16
717	0	CBM	MTIL	FLAT	FAB 5			BS	1	1	37						13
717	0	CBM	MTIL	FLAT	FAB 5			BS	1	1	69		MORTAR ON BACK				17
717	0	CBM	MTIL	FLAT	FAB 5			BS	1	1	65						14

AVAC Report 2007/

Context	DN	class	cname	Form	subfabric	Action	Description	Part	Nosh	NoV	Weight	Condition	Use	L	B	TH
717	0	CBM	MTIL	FLAT	FAB 5			BS	1	1	47					13
717	0	CBM	MTIL	FLAT	FAB 5		FRAGS	BS	2	2	9					
717	0	CBM	MTIL	FLAT	FAB 2			BS	1	1	72					15
717	0	CBM	MTIL	FLAT	FAB 1			BS	1	1	51					16
717	0	CBM	MTIL	FLAT	FAB 1			BS	1	1	34					14
717	0	PIPECLAY	PIPECLAY	CLAYPIPE			17TH CENTURY BORE	STEM	1	1	1					
717	0	ZDATE					E17+	BS	1	1	0					
717	0	CBM	MTIL	FLAT	FAB 5			BS	1	1	26					13
719	0	CBM	PMTIL	BRICK	FAB 8			PART	1	1	514	OVERFIRED				60
719	0	ZDATE					L16+	BS	1	1	0					
723	0	ZDATE					L19TH	BS	1	1	0					
723	0	ZDATE					L13+	BS	1	1	0					
723	0	POTTERY	DERIT	JAR				BS	1	1	2					
723	0	POTTERY	DERIT	JAR				R	1	1	12		SOOTED RIM			
723	0	LEAD	LEAD	CAME				PART	1	1	6				30	
723	0	POTTERY	MEDLOC	JAR	7		DRIBBLE OF GLAZE INT	BS	1	1	39					
723	0	POTTERY	MEDLOC	JUG	5		GLAZE EXT	BS	5	2	113					
723	6	POTTERY	MEDLOC	JUG	7	DR	PATCH GLAZE EXT; PULLED SPOUT, STRAP HANDLE WITH SINGLE DEEP GROOVE, 45 ACROSS	R/H/BS	8	1	842					
723	0	POTTERY	MEDLOC	JAR	7		KNIFE TRIMMED LOWER SIDES AND BASE	B	1	1	51					
723	0	CBM	MTIL	FLAT	FAB 5			BS	1	1	200	BONFIRE BURNT OVER BREAK				17
723	0	CBM	MTIL	FLAT	FAB 5			BS	1	1	33					15
723	0	CBM	MTIL	FLAT	FAB 5			BS	1	1	95					15

AVAC Report 2007/

Context	DN	class	cname	Form	subfabric	Action	Description	Part	Nosh	NoV	Weight	Condition	Use	L	B	TH
723	0	CBM	MTIL	FLAT	FAB 1			BS	1	1	150					17
723	0	CBM	MTIL	FLAT	FAB 5		FRAGS	BS	2	2	52					
723	0	CBM	MTIL	FLAT	FAB 5		FRAG	BS	1	1	30					
723	0	CBM	MTIL	FLAT	FAB 2			BS	2	1	128					17
723	0	CBM	MTIL	FLAT	FAB 2			BS	1	1	79					15
723	0	CBM	MTIL	FLAT	FAB 5		NIB	BS	1	1	24					
723	0	CBM	MTIL	FLAT	FAB 5			BS	1	1	277					13
723	0	CBM	MTIL	FLAT	FAB 5			BS	1	1	246					16
723	0	CBM	MTIL	FLAT	FAB 5			BS	1	1	84					12
723	0	CBM	MTIL	FLAT	FAB 5			BS	1	1	70					15
723	0	CBM	MTIL	FLAT	FAB 2			BS	1	1	48	PARTLY BONFIRE SOOTED OVER BREAK				13
723	0	CBM	MTIL	FLAT	FAB 5			BS	1	1	34					16
723	0	CBM	MTIL	FLAT	FAB 5			BS	1	1	42					17
723	0	CBM	MTIL	FLAT	FAB 5			BS	1	1	15					16
723	0	CBM	MTIL	FLAT	FAB 2			BS	1	1	324					14
723	7	CBM	MTIL	FLOOR	FAB 10	DR; TS; ICPS; PHOTO	GLAZE; MOSAIC FLOOR TILE WITH CIRCULAR HOLE 40 DIA	BS	2	1	40					28
723	0	CBM	MTIL	FLAT	FAB 5			BS	2	1	201	VERY OVERFIRED				15
723	0	CBM	MTIL	FLAT	FAB 1			BS	1	1	41					13
723	0	CBM	MTIL	FLAT	FAB 5		PULLED NIB AND PATCHED	BS	3	1	300					14
723	0	CBM	MTIL	FLAT	FAB 5			BS	1	1	188					14
723	0	POTTERY	MWW	JAR				BS	1	1	3		WHITE DEP INT			
723	0	POTTERY	MWW	JAR				BS	15	15	84		SOOTED EXT			
723	0	POTTERY	MWW	JUG/JAR				BS	13	13	54					

AVAC Report 2007/

Context	DN	class	cname	Form	subfabric	Action	Description	Part	Nosh	NoV	Weight	Condition	Use	L	B	TH
723	0	POTTERY	MWW	JAR			GLAZE INT	BS	1	1	3		SOOTED EXT			
723	0	POTTERY	MWW	JUG			GLAZE EXT	BS	3	3	29					
723	0	POTTERY	MWW	JUG			DROPS GLAZE	BS	1	1	14					
723	0	POTTERY	MWW	JAR				B	1	1	9		SOOTED EXT			
723	0	POTTERY	MWW	JAR				R	1	1	26					
723	0	POTTERY	MWW	JAR				B	1	1	46		BURNT EXT			
723	0	POTTERY	MWW	JUG			GLAZE EXT	B	1	1	21					
723	0	POTTERY	MWW	JAR				R	1	1	10					
723	0	POTTERY	MWW	JUG			DRIBBLES/DROPS GLAZE INT/EXT	BS	1	1	2					
723	0	POTTERY	MWW	JUG			SHL=737; GLAZE EXT	B/BS	2	1	97					
723	0	POTTERY	MWW	JUG/JAR			GREEN GLAZE INT	B	2	1	85		SOOTED/BURNT EXT			
723	0	POTTERY	MWWSS	BALLUSTER JUG			VERT RED SLIP	B	1	1	53					
723	0	POTTERY	MWWSS	JUG			RED SLIP EXTENT	BS	1	1	8					
723	0	PLASTER	PLASTER	PLASTER			PLASTER WITH EGG BLUE PAINT	FRAG	1	1	4					
723	0	PLASTER	PLASTER	PLASTER			PLASTER WITH WHITE WASH LAYERS; LAST LAYER CREAM PAINT	FRAG	1	1	8					
723	0	CBM	PMTIL	BRICK	FAB 8		WASTER?	BS	1	1	1152	V OVERFIRED; DISTORTED			114	48
723	0	SLAG	SLAG	IRON SLAG				BS	2	1	70					
723	0	POTTERY	TUDG	CUP/CHAFING DISH			POINTED DEC	DEC	1	1	1					
724	0	CBM	MTIL	FLAT	FAB 5			BS	1	1	101					15
724	0	ZDATE					L12+	BS	1	1	0					
725	0	POTTERY	MWW	JAR				R	1	1	11					
725	0	POTTERY	MWW	JUG/JAR				BS	1	1	3					
725	0	POTTERY	MWW	SMALL JAR				BS	1	1	1		SOOTED EXT			

AVAC Report 2007/

Context	DN	class	cname	Form	subfabric	Action	Description	Part	Nosh	NoV	Weight	Condition	Use	L	B	TH
726	0	ZDATE					L13+	BS	1	1	0					
726	0	POTTERY	MEDLOC	JAR	1			BS	1	1	27		SOOTED EXT			
726	0	CBM	MTIL	FLAT	FAB 5		PULLED NIB	BS	1	1	15					
726	0	CBM	MTIL	FLAT	FAB 5			BS	1	1	36					15
726	0	CBM	MTIL	FLAT	FAB 5		FRAGS	BS	3	3	6					
726	0	CBM	MTIL	FLAT	FAB 5			BS	1	1	27					19
726	0	CBM	MTIL	FLAT	FAB 5			BS	1	1	179	OVERFIRED				14
726	0	CBM	MTIL	FLAT	FAB 5			BS	1	1	182	OVERFIRED				12
726	0	CBM	MTIL	FLAT	FAB 5			BS	1	1	171					17
726	0	CBM	MTIL	FLAT	FAB 5			BS	1	1	122					17
726	0	CBM	MTIL	FLAT	FAB 5			BS	1	1	127					16
726	0	CBM	MTIL	FLAT	FAB 5			BS	1	1	97					15
726	0	CBM	MTIL	FLAT	FAB 1			BS	2	1	114					15
726	0	CBM	MTIL	FLAT	FAB 5			BS	1	1	21					16
726	0	CBM	MTIL	FLAT	FAB 2			BS	1	1	179					18
726	0	CBM	MTIL	FLAT	FAB 5			BS	1	1	19					15
726	0	CBM	MTIL	FLAT	FAB 5			BS	1	1	26					14
726	0	CBM	MTIL	FLAT	FAB 5			BS	1	1	7					15
726	0	CBM	MTIL	FLAT	FAB 5			BS	1	1	148					17
726	0	POTTERY	MWW	JUG			STRAP HANDLE; NO GLAZE, 26 ACROSS, CENTRAL GROOVE	H	1	1	14					
726	0	POTTERY	MWWSS	JUG			VERT BAND RED SLIP	BS	1	1	42					
726	0	POTTERY	MWWSS	JUG			VERT RED SLIP; STRAP HANDLE WITH CENTRAL GROOVE AND DIAGONAL SLASHING; SLASHING AT	B/H	1	1	708					

AVAC Report 2007/

Context	DN	class	cname	Form	subfabric	Action	Description HANDLE/BODY JOIN	Part	Nosh	NoV	Weight	Condition	Use	L	B	TH
730	0	ZDATE					L13+	BS	1	1	0					
730	0	POTTERY	MP	JAR				BS	1	1	32					
730	0	CBM	MTIL	FLAT	FAB 5			BS	1	1	111	BONFIRE BLACKENING OVER BREAKS				15
730	0	CBM	MTIL	FLAT	FAB 5	FAB 5		BS	1	1	159					15
730	0	POTTERY	MWW	JAR				BS	1	1	51		SOOTED EXT; BLACK DEP INT			
730	0	POTTERY	MWW	JUG			GREEN GLAZE; STRAP HANDLE, CENTRAL GROOVE, 39 ACROSS	H	1	1	73					
730	0	POTTERY	MWW	JUG			DRIBBLED GREEN GLAZE	BS	1	1	19					
730	0	POTTERY	MWW	PIPKIN			STRAP HANDLE END; NO GLAZE	H	1	1	19					
730	0	POTTERY	MWWSS	JUG			VERT RED SLIP	BS	1	1	9					
736	0	ZDATE					L13+	BS	1	1	0					
736	0	CBM	MTIL	FLAT	FAB 5		FRAG	BS	1	1	19					
736	0	CBM	MTIL	FLAT	FAB 5			BS	1	1	89					15
736	0	POTTERY	MWW	JAR				BS	4	3	12		SOOTED EXT			
736	0	POTTERY	MWW	JUG/JAR				BS	2	2	7					
736	0	POTTERY	MWW	JUG				B	1	1	22					
736	0	POTTERY	MWW	JUG			GLAZE DRIBBLES	B	1	1	29					
736	0	POTTERY	MWW	JUG			GREEN GLAZE; PULLED SPOUT	R	1	1	8					
736	0	POTTERY	MWW	JAR				R	1	1	12					
736	0	POTTERY	MWW	JAR				R	1	1	14					
736	0	POTTERY	MWW	JUG				B	1	1	4	BONFIRE SOOTING				
736	0	POTTERY	MWWSS	JUG	FINE		RED SLIP AND	BS	1	1	13					

AVAC Report 2007/

Context	DN	class	cname	Form	subfabric	Action	Description GLAZE	Part	Nosh	NoV	Weight	Condition	Use	L	B	TH
736	0	POTTERY	MWSS	JUG			VERT RED SLIP	B	1	1	37					
736	0	POTTERY	MWSS	JUG			RED SLIP AND GLAZE, STRAP HANDLE, CENTRAL GROOVE AND SCORED LINE; HANDLE 39 ACROSS	H	1	1	39					
737	5	POTTERY	MWW	SPOUTED JAR		DR	PULLED SPOUT	R	1	1	7					
737	0	POTTERY	MWW	JUG			THUMBED BASE; GLAZE EXT	B	1	1	29					
737	0	POTTERY	MWW	JUG			SHL=723; GLAZE EXT	B	3	0	111					
737	0	POTTERY	MWW	JUG			GREEN GLAZE; GROOVED NECK/SHOULDER	BS	1	1	11					
737	0	POTTERY	MWW	JUG/JAR				BS	1	1	2					
737	0	ZDATE					L13+	BS	1	1	0					
738	4	POTTERY	MEDLOC	JAR	HERC1	DR		R	2	1	197					
738	0	ZDATE					L12+	BS	1	1	0					
743	0	ZDATE					L12+	BS	1	1	0					
743	0	CBM	MTIL	FLAT	FAB 5			BS	1	1	123		MORTAR ON BACK			16
743	0	CBM	MTIL	FLAT	FAB 5		FRAGS	BS	2	2	6					
Trench 8																
800	0	POTTERY	DERIT	JAR				BS	1	1	14		SOOTED EXT			
800	0	POTTERY	LPMLOC	FLP				BS	1	1	17					
800	0	POTTERY	LPMLOC	FLP				BS	1	1	11					
800	0	POTTERY	MWW	JAR				R	1	1	18					
800	0	POTTERY	PEAR	CUP				BS	1	1	3					
800	0	POTTERY	STCOAR	BOWL				BS	1	1	13					

AVAC Report 2007/

Context	DN	class	cname	Form	subfabric	Action	Description	Part	Nosh	NoV	Weight	Condition	Use	L	B	TH
800	0	COKE/SHALE	COKE/SHALE	COKE/SHALE				BS	1	1	9					
800	0	PIPECLAY	PIPECLAY	CLAYPIPE			19TH CENTURY BORE	STEM	1	1	1					
800	0	POTTERY	TPW	PLATE				BS	1	1	11					
801	0	POTTERY	DERIT	JAR				B	1	1	42		SOOTED EXT			
801	0	POTTERY	DERIT	JAR				B	1	1	49		SOOTED EXT			
801	0	POTTERY	DERIT	JAR				BS	1	1	1		SOOTED EXT			
801	0	POTTERY	DERIT	JAR				R	1	1	18		SOOTED EXT			
801	0	POTTERY	MEDLOC	JAR	HERC1			R	1	1	16					
801	0	POTTERY	MWW	JUG			GREEN GLAZE	BS	1	1	27					
801	0	POTTERY	MWW	JAR				BS	8	8	62					
801	0	POTTERY	MWWSS	JUG			BODY TO HANDLE; SLASH; RED SLIP	BS	1	1	13					
801	0	CBM	MTIL	FLAT	FAB 2		FRAG	BS	1	1	4					
802	0	POTTERY	MWW	JAR				BS	2	1	7					
802	0	PIPECLAY	PIPECLAY	CLAYPIPE			19 CENTURY BORE	MOUTHPIECE	1	1	1					
Trench 9																
905	0	POTTERY	MWW	JAR				BS	1	1	2					
905	0	POTTERY	MWW	JAR				BS	1	1	2		SOOTED EXT			
905	0	POTTERY	MWW	JUG				B	1	1	52					
905	0	POTTERY	MWW	JAR				BS	1	1	12		SOOTED EXT; BLACK DEP INT			
905	0	POTTERY	MWW	JAR				R	3	3	22					
905	0	POTTERY	MWWSS	JUG			RED SLIP	BS	1	1	2					
Trench 13																
1315	0	POTTERY	BL	JAR				BS	1	1	6					
1315	0	POTTERY	MWW	JUG				BS	7	1	99					

AVAC Report 2007/

Context	DN	class	cname	Form	subfabric	Action	Description	Part	Nosh	NoV	Weight	Condition	Use	L	B	TH
1315	0	POTTERY	MWWSS	JUG			RED SLIP	R	1	1	16					
1315	0	PIPECLAY	PIPECLAY	CLAYPIPE			18 CENTURY BORE	STEM	2	2	4					
1315	0	POTTERY	STCOAR	BOWL				B	1	1	86					
1315	0	POTTERY	STRES	BOWL			WHITE SLIP WITH CLEAR GLAZE	BS	1	1	7					
1317	0	POTTERY	DERIT	JAR				BS	1	1	11		SOOTED EXT			
1317	0	POTTERY	DERIT	JAR				R	1	1	8					
1317	0	POTTERY	DERIT	JAR				BS	7	1	26					
1317	0	POTTERY	MEDLOC	JUG	HERC1			BS	1	1	5					
1317	0	POTTERY	MEDLOC	JAR	HERC1			BS	1	1	10		SOOTED EXT			
1317	0	POTTERY	MWW	JUG				BS	1	1	3					
1317	0	POTTERY	MWW	JAR				BS	1	1	9		SOOTED EXT			
1317	0	INDUST WASTE	INDUST WASTE	INDUST WASTE				BS	1	1	8					
1317	0	CBM	MTIL	FLAT	FAB 5		FRAG	BS	1	1	2					
1317	0	CBM	MTIL	FLAT	FAB 5			BS	1	1	27					15
1317	0	CBM	MTIL	FLAT	FAB 5			BS	1	1	34					16
1317	0	CBM	MTIL	FLAT	FAB 5			BS	1	1	86					15
1317	0	CBM	MTIL	FLAT	FAB 1		FINGER MARKS	BS	1	1	97					20
1319	0	POTTERY	MWW					BS	1	1	6					
1319	0	CBM	PMTIL	BRICK	FAB 11	FAB 11		BS	1	1	512	SALT SURFACING				58
1319	0	CBM	MTIL	FLAT	FAB 2			BS	1	1	447	SALT SURFACING ON UPPER SURFACE			161	15
1319	0	CBM	PMTIL	BRICK	FAB 8			BS	1	1	1179					117
1319	0	CBM	MTIL	FLAT	FAB 5		NIB, ADDED CLAY 35 BY 15 AT TOP EDGE OF TILE	BS	1	1	567					165
1321	0	POTTERY	DERIT	JAR				B	3	3	73		SOOTED EXT			

AVAC Report 2007/

Context	DN	class	cname	Form	subfabric	Action	Description	Part	Nosh	NoV	Weight	Condition	Use	L	B	TH
1321	0	POTTERY	DERIT	JAR				R	1	1	8		SOOTED ON RIM			
1321	0	POTTERY	DERIT	JAR				BS	8	8	77		SOOTED EXT			
1321	0	POTTERY	DERIT	JAR				BS	1	1	8	STACKING SCAR ON BASE				
1321	0	POTTERY	MEDLOC	JAR		HERC1		BS	2	2	6					
1321	0	CBM	MTIL	FLAT		FAB 2	TRACES OF NIB	BS	1	1	297	SALT SURFACING ON UPPER				14
1321	0	POTTERY	MWW	JUG				BS	1	1	24					
1321	0	POTTERY	MWW	JUG				R	1	1	11					
1321	0	CBM	MTIL	FLAT		FAB 1	FRAG	BS	1	1	3					
1322	0	CBM	MTIL	FLAT		FAB 5	NIB 30 BY 15 ADDED CLAY AT TOP OF TILE	BS	1	1	324					
1322	0	CBM	PMTIL	BRICK		FAB 8	LINE DOWN BRICK 45 FROM SIDE; ONE EDGE TAMPED DOWN 8 ON OTHER SIDE	BS	1	1	1515		MORTAR ALLOVER INCLUDING BREAKS		115	55
1323	0	POTTERY	DERIT	JAR				BS	2	2	15		SOOTED EXT			
1323	0	POTTERY	GRE	JAR				B	1	1	19	LAI ON A BED OF WHITE CLAY				
1323	0	CBM	MTIL	FLAT		FAB 2	NIB 35 BY 15 ADDED CLAY	BS	1	1	203	SALT SURFACING ON UPPER				15
1323	0	CBM	MTIL	FLAT		FAB 2		BS	1	1	114	SALT SURFACING ON UPPER				15
1323	0	PIPECLAY	PIPECLAY	CLAYPIPE			17 CENTURY BORE	STEM	1	1	3					
1323	0	POTTERY	STCOAR	BOWL				B	1	1	66	SOIL DEP				
Trench 14																
1402	0	PIPECLAY	PIPECLAY	CLAYPIPE			18 CENTURY BORE	STEM	1	1	1					

AVAC Report 2007/

Context	DN	class	cname	Form	subfabric	Action	Description	Part	Nosh	NoV	Weight	Condition	Use	L	B	TH
1402	0	POTTERY	NCBW	BOWL			WHITE INDUST SLIP WITH MOCCA DEC	BS	1	1	10					
1406	0	POTTERY	MWW	JUG				BS	1	1	2					
1406	0	POTTERY	MWW	JAR				B	1	1	38		SOOTED EXT			
1407	0	CBM	MTIL	FLAT	FAB 2			BS	1	1	120	VITRIFIED				15
1407	0	CBM	MOD	DRAIN/TOILET				BS	1	1	182					
1409	0	CBM	MOD	WALT	FAB 3	FAB 3	SMOOTH SURFACES	BS	4	1	172		MORTAR			11
1409	0	IRON	IRON	LATCH				COMPLETE	1	1	78					
1409	0	POTTERY	TPW	BOWL				R	1	1	3					
1411	0	POTTERY	MWW	JUG				BS	4	4	17					
Trench																
15																
1500	0	POTTERY	DERIT	JAR				R	1	1	9					
1500	0	POTTERY	DERIT	JAR				BS	1	1	4					
1500	0	POTTERY	MEDLOC	JAR	HERC1		FRAGS	BS	5	5	7					
1500	0	POTTERY	MEDLOC	JAR	HERC1			R	2	2	16					
1500	0	POTTERY	MEDLOC	JAR	HERC1			R	1	1	11		SOOTED EXT			
1500	0	POTTERY	MEDLOC	JAR	HERC1			BS	7	7	33		SOOTED EXT			
1500	0	POTTERY	MEDLOC	JAR	HERC1			B	2	2	34		SOOTED EXT; BLACK DEP INT			
1500	0	CBM	MTIL	FLAT	FAB 5			BS	1	1	42					15
1500	0	CBM	MTIL	FLAT	FAB 5			BS	1	1	24					17
1500	0	CBM	PMTIL	BRICK	FAB 8		FRAGS	BS	2	2	41					
1500	0	CBM	MTIL	FLAT	FAB 1		FRAGS	BS	2	2	7					
1500	0	CBM	MTIL	FLAT	FAB 5			BS	1	1	67					13
1500	0	CBM	MOD	WALT?				BS	2	1	3					
1500	0	CBM	MTIL	FLAT	FAB 5			BS	1	1	30					14
1500	0	POTTERY	MWW	JAR				B	1	1	47		SOOTED EXT			

AVAC Report 2007/

Context	DN	class	cname	Form	subfabric	Action	Description	Part	Nosh	NoV	Weight	Condition	Use	L	B	TH
1500	0	POTTERY	MWW	JAR				BS	1	1	5		SOOTED EXT			
1500	0	POTTERY	PMX	DJ				BS	1	1	3					
1500	0	POTTERY	STMO	POSS				BS	1	1	1					
1500	0	POTTERY	TPW	PLATE				R	1	1	1					
1500	0	POTTERY	TPW	BOWL				BS	1	1	4					
1501	0	POTTERY	STCOAR	BOWL?			FRAGS	BS	3	1	3					
1501	0	POTTERY	STCOAR	BOWL				R	1	1	24					
1503	0	POTTERY	DERIT	JAR				BS	1	1	8		WHITE DEP INT			
1503	0	POTTERY	DERIT	JAR				BS	11	10	34		SOOTED EXT			
1503	0	POTTERY	DERIT	JAR				R	2	2	32					
1503	0	POTTERY	MEDLOC	JAR	HERC1			BS	2	2	17					
1503	0	POTTERY	MEDLOC	JAR	HERC1			BS	1	1	9		SOOTED EXT			
1503	0	CBM	MTIL	FLAT	FAB 5		FRAGS	BS	5	5	50					
1503	0	POTTERY	MWW	JUG/JAR				BS	3	2	5					
1503	0	POTTERY	MWW	JUG				BS	2	2	6					
1503	0	POTTERY	MWW	JUG				B	1	1	14					
1504	0	POTTERY	DERIT	JAR				R	5	1	120					
1504	0	POTTERY	MEDLOC	JUG	8		STRAP HANDLE 40 ACROSS; 3 WAVY LINES DOWN HANDLE	H	3	1	43					
1504	0															
Trench 16																
1602	0															
1602	0															
1602	0															
1609	0															
1609	0															
1609	0															

AVAC Report 2007/

Context	DN	class	cname	Form	subfabric	Action	Description	Part	Nosh	NoV	Weight	Condition	Use	L	B	TH
1611	0															
1611	0															
1611	0															
1611	0															
1613	0															
1617	0															
1617	0															
Trench 19																
1903	0															
1903	0															
1903	0															
1903	0															
1903	0															
1903	0															
1903	0															
Trench 21																
2106	0															
2106	0															
Trench 25																
2505	0															
2505	0															
2505	0															
2505	0															
2505	0															
2505	0															
2505	0															
Trench 26																
2605	0															

AVAC Report 2007/

Context	DN	class	cname	Form	subfabric	Action	Description	Part	Nosh	NoV	Weight	Condition	Use	L	B	TH
2605	0															
2605	0															
2605	0															
2605	0															
2605	0															
Trench																
35																
3502	0															
3502	0															
3502	0															
3502	0															
3504	0															
3504	0															
3504	0															
0			2		1		4									
0		CLEAR	3		1		10			2						
0			1		1		2									
0			1		1		3									
0		DKGR	1		1		8									
0		CLEAR	1		1		98									
0			1		1		1									
0		GREEN	1		1		4									
0		LTGR	1		1		8									
0			1		1		1									
0			1		1		3									
0			1		1		3									
0			1		1		10									
0			1		1		3									
0			3		3		21									

AVAC Report 2007/

Context	DN	class	cname	Form	subfabric	Action	Description	Part	Nosh	NoV	Weight	Condition	Use	L	B	TH
0			1		1	10										
0			1		1	9										
0			2		2	16										
0			1		1	1										
0			3		1	4										
0		LTBL	1		1	1				1						
0		FAB 5	4		4	20										
0			1		1	3										
0			2		2	4										
0			1		1	2										
0			1		1	1										
0			1		1	2										
0		FAB 1	1		1	1										
0		FAB 5	1		1	15				13						
0		FAB 5	1		1	51				15						
0		FAB 5	2		2	17										
0		FAB 5	1		1	141				15						
0		FAB 5	1		1	93				17						
0		FAB 5	1		1	33				14						
0		FAB 9	1		1	117	V WORN			20						
0		FAB 1	1		1	199				17						
0		FAB 1	1		1	15	ABRA									
0		FAB 5	1		1	74				17						
0		FAB 5	1		1	156				18						
0		FAB 5	1		1	125				15						
0		FAB 5	1		1	98				16						
0		FAB 5	1		1	160				14						
0		FAB 5	1		1	146				16						

AVAC Report 2007/

Context	DN	class	cname	Form	subfabric	Action	Description	Part	Nosh	NoV	Weight	Condition	Use	L	B	TH
0		FAB 5	1		1	43				16						
0		FAB 5	1		1	41				13						
0		FAB 5	1		1	66				14						
0		FAB 5	5		5	107										
0		FAB 5	1		1	36				13						
0		FAB 5	1		1	40				13						
0		FAB 5	1		1	39				18						
0		FAB 5	1		1	23				15						
0		FAB 5	1		1	15				13						
0		FAB 1	1		1	174				13						
0		FAB 1	1		1	49				17						
0		FAB 1	3		1	183				16						
0		FAB 5	1		1	25										
0		FAB 5	1		1	90				16						
0		FAB 5	1		1	183	VITRIFIED; BUCKLED			12						
0		FAB 5	1		1	45				13						
0		FAB 5	1		1	48				16						
0		FAB 5	1		1	85				15						
0		FAB 5	1		1	178				14						
0		FAB 5	1		1	118				14						
0		FAB 5	1		1	136				15						
0		FAB 5	1		1	63				15						
0		FAB 5	1		1	58				15						
0		FAB 5	1		1	58				14						
0		FAB 1	1		1	83				16						
0		FAB 5	1		1	87				15						
0		FAB 5	1		1	122				16						
0			1		1	0										

AVAC Report 2007/

Context	DN	class	cname	Form	subfabric	Action	Description	Part	Nosh	NoV	Weight	Condition	Use	L	B	TH
0		FAB 8	1		1											
										77						
0		FAB 5	1		1											
										12						
0			1		1											
0		FAB 6	1		1											
										14						
0			1		1											
0			1		1			50								
0		FAB 5	1		1											
										13						
0		FAB 1	1		1											
										20						
0			1		1											
0			2		1		SOOTED EXT									
0			1		1											
0			1		1											
0			1		1											
0			1		1											
0			1		1											
0			1		1											
0			1		1											
0			1		1											
0			2		1											
0			1		1											
0			1		1											
0			5		1											
0			2		2											
0			1		1											
0			1		1											

AVAC Report 2007/

Context	DN	class	cname	Form	subfabric	Action	Description	Part	Nosh	NoV	Weight	Condition	Use	L	B	TH
0			3		3	62										