

Archaeological Standing Building Survey
Ury Walled Garden
Stonehaven
ABERDEENSHIRE

SZ02



Alder Archaeology Ltd
55 SOUTH METHVEN STREET
PERTH PH1 5NX
Tel: 01738 622393
Director@AlderArchaeology.co.uk

**ARCHAEOLOGICAL STANDING
BUILDING SURVEY
URY WALLED GARDEN
ABERDEENSHIRE**

SZ02

<i>1</i>	<i>Background.....</i>	<i>1</i>
<i>2</i>	<i>Details of Work.....</i>	<i>1</i>
<i>3</i>	<i>Interpretation.....</i>	<i>7</i>
<i>4</i>	<i>Conclusions and Recommendations</i>	<i>7</i>
<i>5</i>	<i>Bibliography</i>	<i>7</i>
<i>Appendix 1</i>	<i>Photographic Register</i>	<i>8</i>
<i>Appendix 2</i>	<i>Discovery & Excavation in Scotland Entry</i>	<i>13</i>

Illustration 1: Site location plan

Illustration 2: Floorplan

Illustration 3: NNW and SSE external elevations, including bothy

Illustration 4: Internal elevations

Author Chris Fyles, MA, FSA Scot, PCIfA
Illustrator Chris Fyles, MA, FSA Scot, PCIfA
Editor David Bowler, BA, MPhil, FSA Scot, MCIfA

ABSTRACT

A C-listed brick-built walled garden of mid-nineteenth century origin was recorded in advance of works to construct hotel accommodation. Having been disused for some time, the garden interior was thickly overgrown, but the walls and an accompanying gardener's bothy, workshop and greenhouses were substantially intact. Graffiti from the early-to-mid twentieth century was noted on the interior walls of the bothy. A watching brief on groundworks will form the subject of a separate report. The standing building survey was conducted on 22nd March, 2021.

1 Background

1.1 Introduction

Ury Developments Ltd commissioned Alder Archaeology to undertake an archaeological standing building survey on of a walled garden at Ury House, in advance of the construction of hotel accommodation. The proposed development area lies within the disused garden, centred on NGR NO 8576 8786. The work (site code SZ02) was undertaken on 22nd March, 2021, in bright weather conditions. The requirement was to conduct a Level 1 survey.

The work was designed to satisfy the first archaeological condition on development application references APP/2017/2363 and APP/2017/2772. A watching brief on groundworks will be the subject of a separate report.

1.2 Aims and Objectives

The main aim of the building survey was to create a permanent photographic, illustrated and narrative record of the building in its present setting and condition.

1.3 Reporting

The present document has been prepared as an interim on the archaeological works covering the development, specifically referring to the standing building survey. A combined report on both the survey and subsequent watching brief will be produced upon completion of the latter. Copies of the interim will be sent to the client and Aberdeenshire Historic Environment Record.

1.4 Planning and Curatorial Issues

This standing building survey is the initial part of a programme of archaeological work designed to satisfy the outstanding archaeological condition on the planning consent for this development.

1.5 Acknowledgements

We wish to thank Tom Morton of Arc Architects Ltd for his assistance and guidance throughout this project. Ury Developments Ltd funded this survey.

2 Details of Work

2.1 The Site (Illus 1)

Ury House stands in extensive private grounds on a plateau above a S-facing slope overlooking the town of Stonehaven, with the Cowie Water flowing NW-SE through a wooded gorge immediately S of the house and the Houff Burn flowing into the Cowie to the SE, having passed close to the house. The A90 Dundee-Aberdeen road passes between Ury and Stonehaven on the far side of the Cowie, with the A957 Slug Road to Crathes passing the site to W. The walled garden lies on level ground c.200m NNW and uphill of the house, with a former coach house close by to the E.

2.2 Archaeological Potential

Ury Estate came into the possession of the Barclay family in 1647, after which time a house was built to replace one destroyed in the Civil War. Maps by Pont (1583-1614) and Roy (1747-1755) do not show a designed garden element in the area, while an estate plan of 1847 shows a quadrangle of buildings at the present location of the garden. However, by the time of the First Edition OS map (surveyed 1865), the garden has replaced the buildings, suggesting it was constructed between 1847-1865. It is known that the estate was significantly expanded from 1855 onwards, including the construction of a new house, so it seems likely that the garden walls were part of this new phase. The garden is C-listed and is recorded in the HER as NO88NE0164, lying within the wider designed landscape of Ury House grounds (NO88NE0104). It is also in close proximity to two prehistoric burials (NO88NE0012).

2.3 Archaeological Method

A Level 1 Standing Building Survey was carried out to create a permanent record. This comprised: a full photographic record of the building in its current setting, with all main external and internal elevations and features of interest; annotated measured plan and elevation drawings of the building, together with location maps at appropriate scales; a narrative account, taking in the form, fabric, condition and function of the building, together with features of interest, measurements of key features and details of any evidence of phases of construction and use.

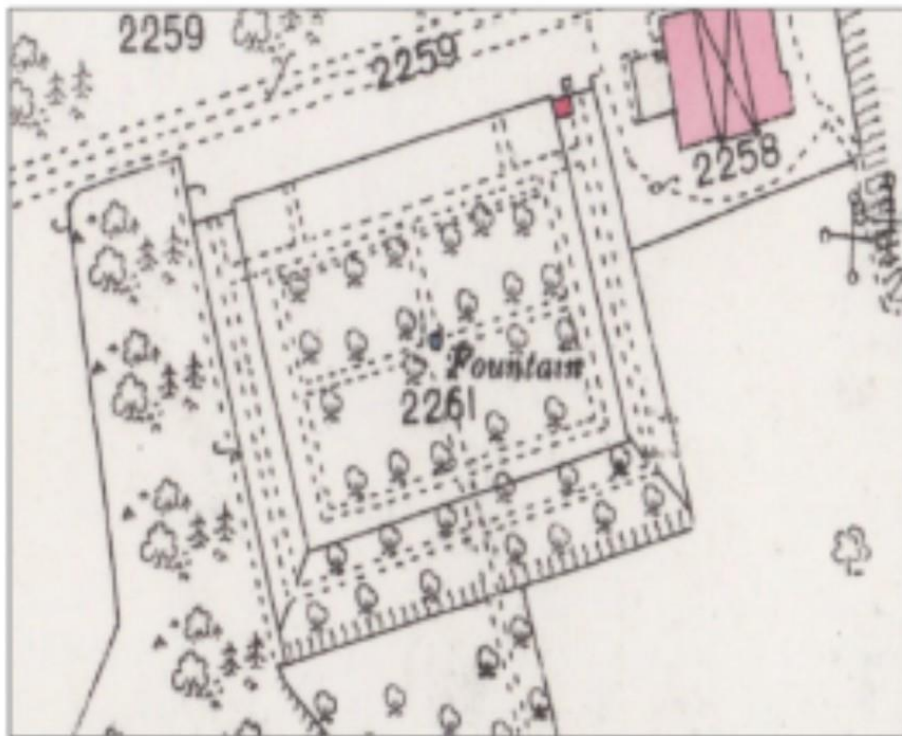
2.4 Results of Investigations

The area of the walled garden first appears on the estate plan of 1847, surveyed by James Beattie, showing a quadrangle of buildings:



Beattie, 1847, notation by Tom Morton of Arc Architects Ltd

The 1865 First Edition Ordnance Survey map at 25 inches to a mile shows the garden in what is essentially its present configuration, although no trace now remains of either the central fountain nor the terrace wall to the S, both indicated on this map:



OS First Edition, 1865, building at top right is the Coach House

At this stage, none of the buildings along the NNW elevation are yet present, but by the OS Second Edition (1902) these structures have been added, while the S terrace wall and fountain have disappeared:



OS Second Edition 1902. The buildings around the screening wall in the NW corner have since disappeared, along with the NE corner enclosure.

The OS Third Edition (1923) shows very little change, beyond the felling of some of the woodland to the S of the garden. By this stage, then, the garden was essentially complete. In its earlier phase, the interior appears to have been laid out as a formal pleasure garden, but the later removal of paths and fountain and addition of working buildings suggest a later focus on horticultural production.

Garden walls

The garden is a rectangle, whose walls measure 76.00m ENE-WSW x 63.00m NNW-SSE. The main entrance is centrally in the SSE wall, beyond which lies Ury House. The entrance is 2.60m wide, with the ENE side damaged through the removal of a gate pier. The surviving pier on the WSW side finishes the wall with ashlar quoins and is capped with a moulded block which extends the height to 2.60m. Iron gate fittings are still in place. The remainder of the wall on this elevation is 2.30m high and constructed of old red brick with eroded lime mortar and sandstone coping slabs, which are mostly in position on this side. At both the WSW and ENE corners, the wall rises in a steep curve by 0.50m to meet the perpendicular return. No trace remains of the terrace wall to the S of the garden noted on the 1865 map.

The WSW and ENE walls maintain a level height until 10.30m from the N ends, at which point both feature doorways. The example in the WSW elevation is blocked with newer brick with cement bonding, while that in the opposite elevation into the garden of the neighbouring Coach House has a working wooden door. Immediately NNW of both doors, the wallhead rises again by c.0.50m, in a similar steep curve. The NW corner of the garden features a low, partially ruinous screening wall of brick, continuing the line of the NNW elevation to meet the stone boundary wall which runs parallel with the garden and joins with a similar wall running along the road to the NNW, which connects with the Coach House. This boundary wall, standing up to 1.65m tall, is of bonded stone rubble with moulded copes. No trace remains of the shed or greenhouse buildings depicted in this area on the 1903 map. The coping slabs along top of the WSW elevation are frequently displaced and the brickwork and lime bonding quiet badly eroded.

The NNW elevation, facing the road, has several features of interest. Evenly spaced along the wallhead, beginning at the NW corner, are three ornamental chimney pots of moulded stone, with a fourth once probably occupying the NE corner removed almost certainly for reasons of safety (this position overlooks the private garden of the Coach House). Each stands almost 2.00m tall, with what would have been the central pair crowning a final 0.50m step up in the wallhead, which is now approximately double the height of the SSE elevation. It is possible that the pots were once attached to an intramural heating system, of which traces do survive within the standing buildings (see below); however, the outermost pots, which do not appear connected, were almost certainly false and purely decorative.

The elevation also features three doorways, with one 12.20m from the E end still with a working wooden door, probably original and with a cast iron handle, but opening into a greenhouse in the NE corner of the garden interior that was unfortunately quite inaccessible during the survey due to thick undergrowth. 1.35m W of the door is the ruined stub of a brick screening wall, indicated on the 1903 map as no more than a short projection and now completely overshadowed by a stand of mature yew trees that dominates this part of the frontage. A brick arch at ground level to the E may have

indicated the former position of a flowerbed. Two other doorways, both blocked with newer brick, are positioned either side of the lean-to buildings against the garden wall (see below). Both doorways are 2.05m tall, that on the W side cased with ashlar blocks and close to a second brick arch, that on the E located immediately E of the remains of a roof ridge indicating a demolished shed that does not appear on the OS map (the gable ghost of this structure is visible on the ENE elevation of the workshop, see below). Opposite the garden wall in this area, against the roadside boundary, is a brick and concrete former flowerbed, featuring iron bolts indicating the former presence of a glass covering. It measures 2.28m NNW-SSE x 5.13m transverse, standing 0.71m tall on the NNW side. 2.30m to the NW is a small stone trough or bed directly against the boundary. Both these features appear on the OS map and represent the general use of the area between the garden and the road for ancillary structures.

Bothy and Workshop

The outside of the NNW garden wall features a suite of lean-to buildings, beginning at the WSW with a corrugated metal shed, possibly replacing a brick original and currently storing junk, including a bath and sink probably taken from the neighbouring bothy. This adjoins the WSW elevation of a rectangular building with brick walls and moulded stone casings of windows and doorways, with a grey slate roof rising to the height of the garden wall forming its SSE side. It features four stone-cased windows with lead lattice frames (absent from the window second from WSW, but presumably once present). The WSW end of this structure is taken up by a narrow (c.3.00m square) cellar room accessed via a 1.06m wide, 2.45m doorway (still with wooden door) and left-hand spiral steps descending to an earth floor 1.30m below the external ground surface. This contains, in its SSE elevation (ie, the garden wall) a cast iron furnace and 0.24m diameter pipe, either a flue or a water pipe for heating the greenhouses in the garden interior (see below). Beneath the WSW wall, within a pit projecting into the corrugated shed, sits a heavily corroded boiler (possibly a Robin Hood boiler manufactured by Beeston, of early 20th Century date).

The central section of the lean-to is taken up by a two room bothy, which does not directly communicate with the boiler cellar, instead accessed via a separate doorway opening into a small entrance hall. At the WSW is a room with plasterboard walls, measuring 3.66m NNW-SSE x 2.55m transverse, with a window in the NNW elevation and a short extension that may have contained a washroom and presently houses a plastic cistern. This may have been a bedroom (a sprung iron bedstead was noted elsewhere on the site) and also featured a small cupboard. The larger room, c.3.60m square, to the ENE, contains a fireplace against the SSE elevation, with a moulded mantelpiece 1.29m tall x 1.43m wide with brick backing below. Perhaps the most interesting feature of the bothy is the presence of graffiti scrawled on the painted plaster walls of the living room, the earliest noted being from 1913 and other examples written by serving members of the 51st Highland Division.



Evidently, the garden was for a time a local attraction open to the public of Stonehaven and environs, although some entries may have been made by gardeners living on the site. The NNW elevation features a stone-cased window of the same dimensions (1.16m wide x 1.78m tall) as in the bedroom). The ENE room of the lean-to is a former workshop, not directly communicating with the bothy but accessed by a doorway noticeably wider than those into the bothy and cellar (1.66m as opposed to 1.06m), perhaps to facilitate the movement of trolleys and wheelbarrows. Unlike the bothy, which features floorboards, the workshop is floored with poured concrete, quite badly eroded. A hatch in the WSW elevation accesses attic space above the bothy, but this could not be reached during the survey. The workshop directly access the greenhouses in the garden interior via a 0.92m wide doorway, damaged on its WSW side.

Greenhouses

The greenhouses were built on the NNW elevation of the interior, the opposite side of the wall to the bothy and workshop, with the garden wall serving to divide the growing space from the living space. Apart from a single greenhouse in the NE corner of the garden, entirely inaccessible due to undergrowth, the main greenhouse was originally a long rectangle, 4.73m wide and subdivided into three rooms. The ENE end room is now demolished, with only the wall foundations still standing, bounding a footprint 8.96m long. Next to this, the central room 6.73m long and the WSW room 8.96m long are presently roofed with corrugated metal, but the presence of a system of levers and wheels against the roof and the garden wall indicate a mechanism to open and close glass skylights and possibly the entire greenhouse roof. The stone lower parts of the WSW, SSE and ENE walls contain window apertures, each 1.08m long and 0.40m wide, spaced along the full length of the building to increase both illumination and ventilation. Movement along the greenhouses is on a slab walkway, with depressions along the SSW side probably indicating the former locations of seed beds and tables. A final feature of interest is a probable intramural heating system, represented by a concrete box built against the NNW near the entrance (presently almost buried by debris), with which pipes formerly connected across the wall face, as indicated by a linear cavity in the plaster above the doorway. The ornamental chimney pots noted above may have been associated with this system, although perhaps only the central

pair were actually connected. The furnace and boiler in the cellar room were also, presumably, part of the arrangement, which was intended to heat the greenhouses during cold weather.

Garden interior

This is presently thickly overgrown, with, in particular, a stand of large trees in the SE corner making access to the wall face very difficult. The remaining area is mostly covered with long grass and weeds, with a low earth bank running parallel with the WSW wall probably deriving from recent removal of more trees and shrubs. Nothing remains of either the earlier formal arrangement or later utilitarian plant production of the garden when in use. The reverse faces of the doorways and other features noted on the exterior were visible during the survey, but no other features were noted.

ENE elevation

This lies within the private garden of the former Coach House and was briefly visited to make record shots with the kind permission of the owner. The gable ghost of a demolished lean-to shed was noted at the N end of the elevation.

3 Interpretation

The fabric and style of the garden is entirely in keeping with a mid-Victorian date of construction, while subsequent additions in the form of lean-to buildings and ancillary structures are in agreement with the map evidence available. The presence of early 20th Century graffiti is an interesting record of local use and perhaps of the working lives of those employed by the Ury estate.

4 Conclusions and Recommendations

4.1 Recommendations for Further Work

Alder Archaeology consider that the standing building survey has been conducted correctly. A watching brief on development groundworks has already been requested as a condition of planning permission, subsequent to completion of this report. However, the final decision ultimately rests with Aberdeenshire Council Archaeology Service.

5 Bibliography

Beattie, J.F., *Plan of the Estate of Ury*, 1848, Aberdeen University Library, MS 3759/1/300 (by permission, Arc Achitects Ltd)

Ordnance Survey, *Kincardineshire, XII.15 (Combined)*, survey date: 1865, publication date: 1901 (25 inches to a mile, First Edition)

Ordnance Survey, *Kincardineshire, Sheet XV.SE (includes: Dunottar; Fetteresso)*, date revised: 1902, date published: 1904 (6 inches to a mile, Second Edition)

Ordnance Survey, *Kincardineshire, Sheet XV.SE (includes: Dunottar; Fetteresso)*, date revised: 1923, date published: 1927 (6 inches to a mile, Third Edition)

Appendix 1 Photographic Register

<i>Image No</i>	<i>Description</i>	<i>View</i>
1	Location shot, Ury House, from S side of walled garden	SE
2-3	Location shots, Stonehaven from S side of walled garden	SSE, S
4	Location shot, Ury house, from open ground between garden and house	SE
5-8	Location shot, walled garden from house	NW, W
9-10	Location shot, Coach House through trees to E of garden	N
11	General view, walled garden from S	NNW
12-13	Location shot, Stonehaven from S side of walled garden	SE
14-15	Location shot, trees to E of garden	N, NNE
16-18	Walled garden external SSE elevation	NNW
19-20	Walled garden external SSE elevation, gateway	NNW
21-22	Walled garden external SSE elevation, E half, oblique	N
23-24	Walled garden external SSE elevation, E of gateway	NNW
25-26	Walled garden external SSE elevation, E of gateway, mid-section	NNW
27-28	Walled garden external SSE elevation, E end	NNW
29-30	Walled garden external SSE elevation, E corner, oblique	NNE
31-32	Walled garden external SSE elevation, W of gateway	NNW
33-34	Walled garden external SSE elevation, W half, oblique	NW
35-36	Walled garden external SSE elevation, W end	NNW
37-38	Walled garden external WSW elevation, S corner	ENE
39-40	Walled garden external WSW elevation, S end, oblique	NNE
41-42	Walled garden external WSW elevation, mid-section, oblique	NNE
43-44	Walled garden external WSW elevation, N end, oblique	NNE
45-47	Detail, displaced copes on top of garden wall	NE, N
48-50	Detail, bricked-up entrance in at N end of external WSW elevation of garden	ENE
51-52	Detail, ornamental false chimney, NW corner of garden	N

53-55	Detail, semi-ruinous screening wall, NW corner of garden	NNW
56-58	Walled garden external NNW elevation, W corner	SSE
59-62	Walled garden external NNW elevation, W end, oblique	SE
63-64	Walled garden external NNW elevation, W end, bricked-up doorway, arch and false chimney pedestal, oblique	SE
65-66	Walled garden external NNW elevation, W end, bricked-up doorway, arch	SSE
67-68	Detail, ground level arch	SSE
69	Detail, bricked-up doorway (bright sunshine)	SSE
70-71	Detail, bricked-up doorway, oblique	SE
72-73	Lean-to corrugated shed against NNW elevation of garden	ENE
74	General view, corrugated shed interior	ENE
75-76	W end of bothy exterior, oblique	E
77	NNW elevation of bothy, W end	SSE
78	NNW elevation of bothy, mid-section	SSE
79-80	Detail, bothy chimney	SSE
81-82	Bothy and workshop exterior, oblique (bright sunshine)	SW
83-85	E end of bothy/workshop, oblique	E
86-89	Flowerbed to NNW of garden (bright sunshine)	NNW
90-91	NNE elevation of bothy/workshop, gable ghost visible	SSW
92-93	External NNW elevation of garden to E of bothy/workshop, roof ridge of demolished shed visible	SSE
94-95	Detail, bricked-up doorway to E of bothy/workshop	SSE
96-97	Walled garden NNW elevation, E end, oblique	SE
98-99	Detail, ruined wall stub at E end of external NNW elevation of walled garden	ENE
100	Detail, door to E of wall stub	SSE
101-102	Detail, ground level arch	SSE
103	Interior, SSE elevation of boiler cellar	SSE
104	Interior, general view of boiler cellar	S
105-106	Interior, detail, furnace in SSE elevation of cellar	SSE

107-108	Interior, detail, boiler beneath WSW cellar wall, oblique	SW
109-110	Interior, detail, furnace, bricked-up arch and flue, SSE elevation of cellar	SSE
111	Interior, detail, roof beams over cellar	-
112	Interior, WSW elevation of bothy bedroom, oblique	SW
113	Interior, SSE elevation of bothy bedroom, oblique	S
114-115	Interior, washroom? in bothy, oblique	E
116	Interior, general view of bothy living room	SE
117-118	Interior, detail, fireplace in bothy living room	SSE
119-122	Interior, detail, graffiti on living room walls	SSE, ENE
123-124	Interior, WSW elevation of bothy living room	WSW
125-126	Interior, detail, graffiti on living room walls	WSW
127	Interior, NNW elevation of bothy living room, oblique	NW
128-129	Interior, general view of workshop	SW
130-131	Interior, attic hatch over workshop (inaccessible)	WSW
132-133	Interior, ENE elevation of workshop	ENE
134-136	Interior, general view of W greenhouse	SW
137	Interior, detail, skylight-opening mechanism in greenhouse ceiling	SW
138	Interior, WSW elevation of W greenhouse	WSW
139-140	Interior, detail, window settings in SSE wall of W greenhouse	SSE
141-142	Interior, general view of W greenhouse	E
143-145	Interior, ENE elevation of W greenhouse	ENE
146	Interior, detail, heating unit behind debris in W greenhouse	WSW
147	Interior, doorway to workshop	NNW
148	Interior, ENE elevation of central greenhouse	ENE
149-150	Interior, detail, handle for skylight mechanism in central greenhouse	WSW
151	Interior, WSW elevation of central greenhouse	WSW
152-155	Walled garden interior, remains of E greenhouse	ENE
156-157	Walled garden interior, general view of S wall	SSE

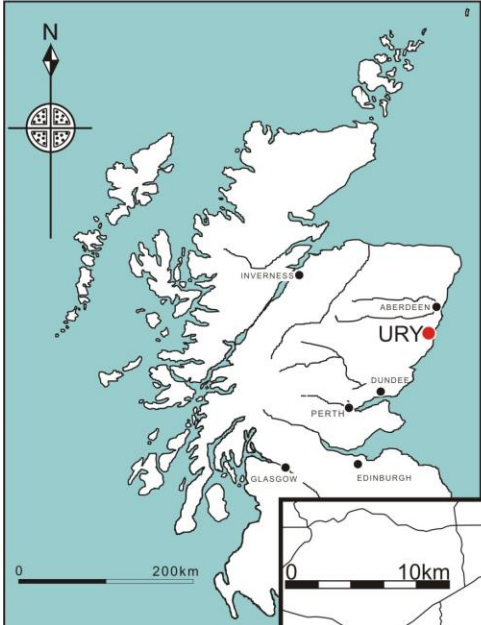
158	Walled garden interior, general view of E wall	E
159	Walled garden interior, general view of S wall	SSE
160-161	Walled garden interior, detail of door to Coach House garden in E wall (overgrown)	ENE
162-164	Walled garden interior, general view of NE corner greenhouse (inaccessible)	NE
165	Walled garden interior, general view main greenhouses	W
166-168	Walled garden interior, general views from E side	SW, W, NW
169	Walled garden interior, NNW elevation	NNW
170	Walled garden interior, NW corner	NW
171	Walled garden interior, NE corner	NE
172	Walled garden interior, SE corner	SE
173	Walled garden interior, SSE elevation, main gateway	SSE
174-175	Walled garden interior, SSE elevation, E half, oblique	SE
176-177	Walled garden interior, WSW elevation, S end, oblique	S
178-179	Walled garden interior, WSW elevation, N end, oblique	W
180	Walled garden interior, detail, bricked-up doorway at N end of WSW elevation	WSW
181	Walled garden interior, WSW elevation, oblique	S
182	Detail, ornamental false chimney, NW corner of garden	NW
183-189	Walled garden interior, general views from NW corner	ENE, SE, SSE
190-191	Detail, ornamental false chimney, to W of greenhouses	N
192-195	Walled garden interior, detail, bricked-up doorway to W of greenhouses	NNW
196-197	Walled garden interior, NNW elevation, W half	NNW
198-199	Walled garden interior, NNW elevation, W half, oblique	N
200-201	Walled garden interior, general views from W side	E, SE
202-204	Walled garden interior, SSE elevation of greenhouses	NNW
205	Walled garden interior, NNW elevation, E half, oblique	NE
206-207	Walled garden interior, SSE elevation of greenhouses	NNW
208	Walled garden interior, NNW elevation, W half, oblique	NW

209	Walled garden interior, NNW elevation, E half, oblique	NE
210	W end of bothy exterior	SSE
211	W end of bothy exterior, oblique	S
212-213	Bothy exterior, mid-section	SSE
214	Detail, bothy chimney	SSE
215-216	Bothy exterior, oblique	SW
217-218	E end of bothy exterior	SSE
219	Bothy exterior, oblique	SW
220-222	External NNW elevation of garden to E of bothy/workshop, roof ridge of demolished shed visible	SSE
223-224	Detail, flowerbed to NNW of garden	NNW
225-226	Detail, trough/bed to NNW of garden	NNW
227-228	Walled garden exterior NNW elevation, oblique	W
229-236	Location shots, garden and lane	E, W
237-238	Walled garden external ENE elevation (in Coach House private garden), oblique	W
239-240	Detail, door in ENE elevation	WSW
241-242	Walled garden external ENE elevation, N end, oblique	NW
243-244	Walled garden external ENE elevation (in Coach House private garden), oblique	NW
245-246	Walled garden external ENE, S end, oblique	W
247-248	Detail, gable ghost of demolished lean-to, N end of external ENE elevation	WSW

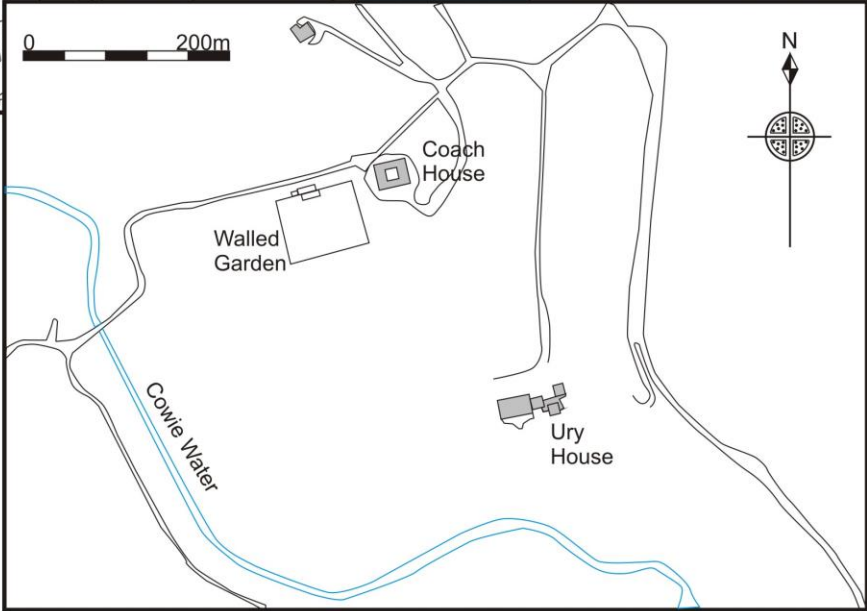
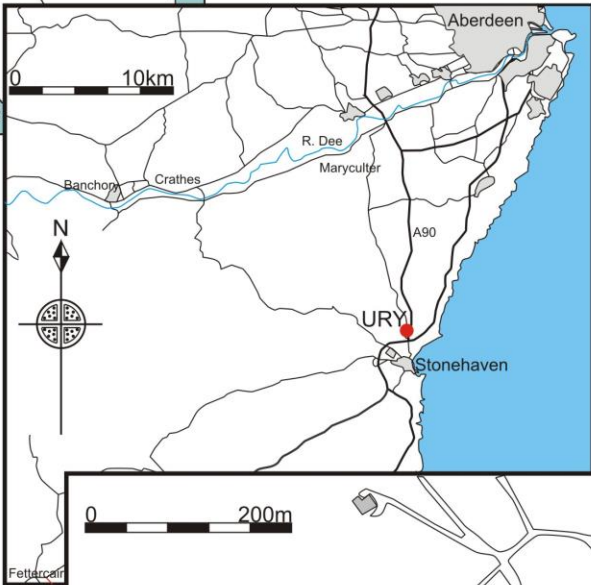
Appendix 2 Discovery & Excavation in Scotland Entry

LOCAL AUTHORITY:	Aberdeenshire
PROJECT TITLE/SITE NAME:	Ury Walled Garden
PROJECT CODE:	SZ02
PARISH:	Fetteresso
NAME OF CONTRIBUTOR:	C Fyles
NAME OF ORGANISATION:	Alder Archaeology Ltd
TYPE(S) OF PROJECT:	Standing Building Survey
NMRS NO(S):	NO88NE 32.08
SITE/MONUMENT TYPE(S):	Walled Garden
SIGNIFICANT FINDS:	None
NGR (2 letters, 8 or 10 figures)	NO 8576 8786
START DATE (this season)	22 nd March 2021
END DATE (this season)	22 nd March 2021
PREVIOUS WORK (incl. DES ref.)	None
MAIN (NARRATIVE) DESCRIPTION: (May include information from other fields)	A C-listed brick-built walled garden of mid-nineteenth century origin was recorded in advance of works to construct hotel accommodation. Having been disused for some time, the garden interior was thickly overgrown, but the walls and an accompanying gardener's bothy, workshop and greenhouses were substantially intact. Graffiti from the early-to-mid twentieth century was noted on the interior walls of the bothy. A watching brief on groundworks will form the subject of a separate report.
PROPOSED FUTURE WORK:	WB
CAPTION(S) FOR ILLUSTRS:	-
SPONSOR OR FUNDING BODY:	Ury Developments Ltd
ADDRESS OF MAIN CONTRIBUTOR:	Alder Archaeology Ltd, 55 South Methven Street, Perth PH1 5NX
EMAIL ADDRESS:	director@alderarchaeology.co.uk
ARCHIVE LOCATION (intended/deposited)	HES (intended)

Illus1



© Crown copyright. All rights reserved.
Licence number AL 100049514



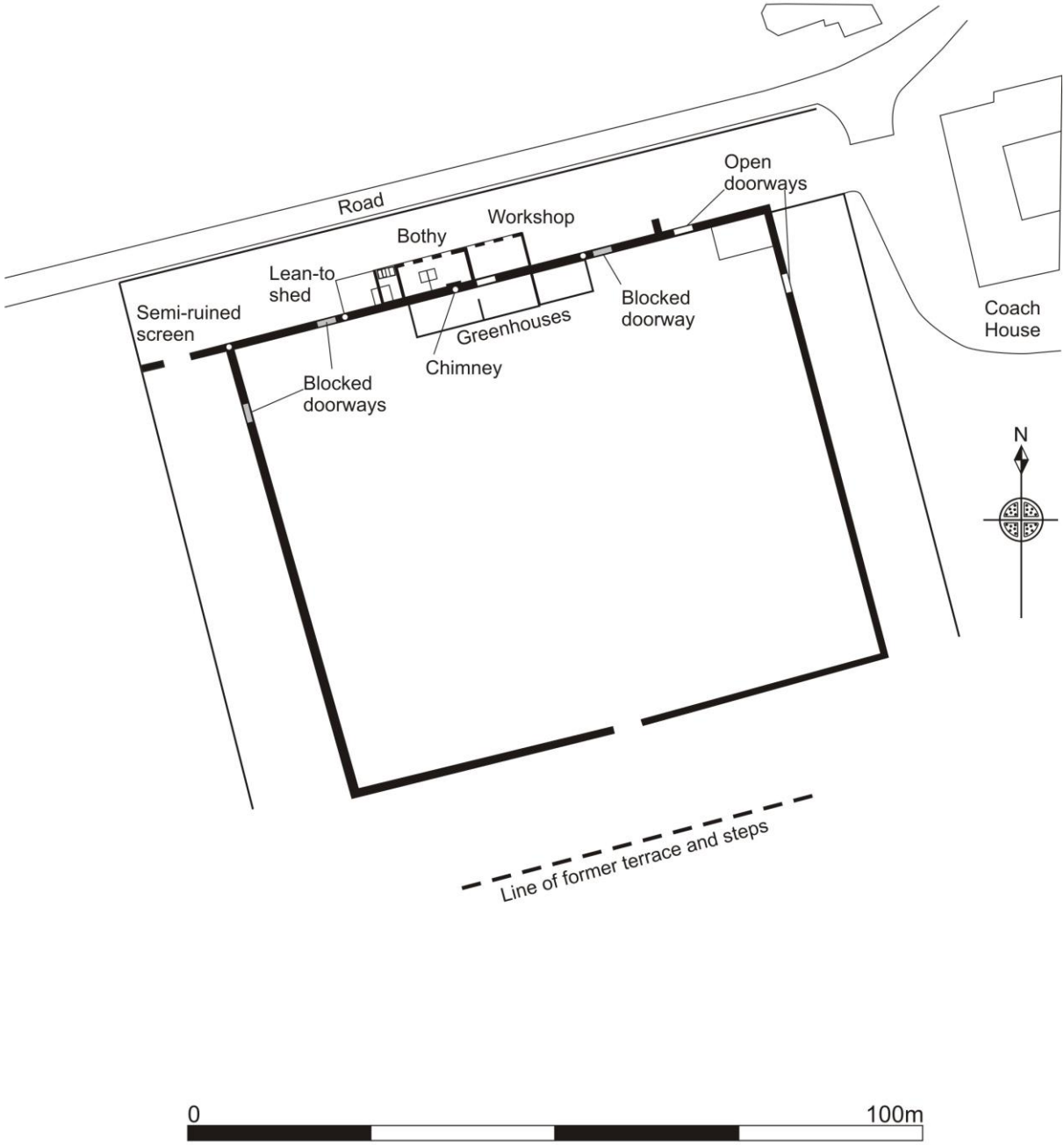
Ury Walled Garden
Stonehaven
Site Location

SZ02

2021 Alder Archaeology Ltd

Illus 2

Ury Walled Garden, floorplan

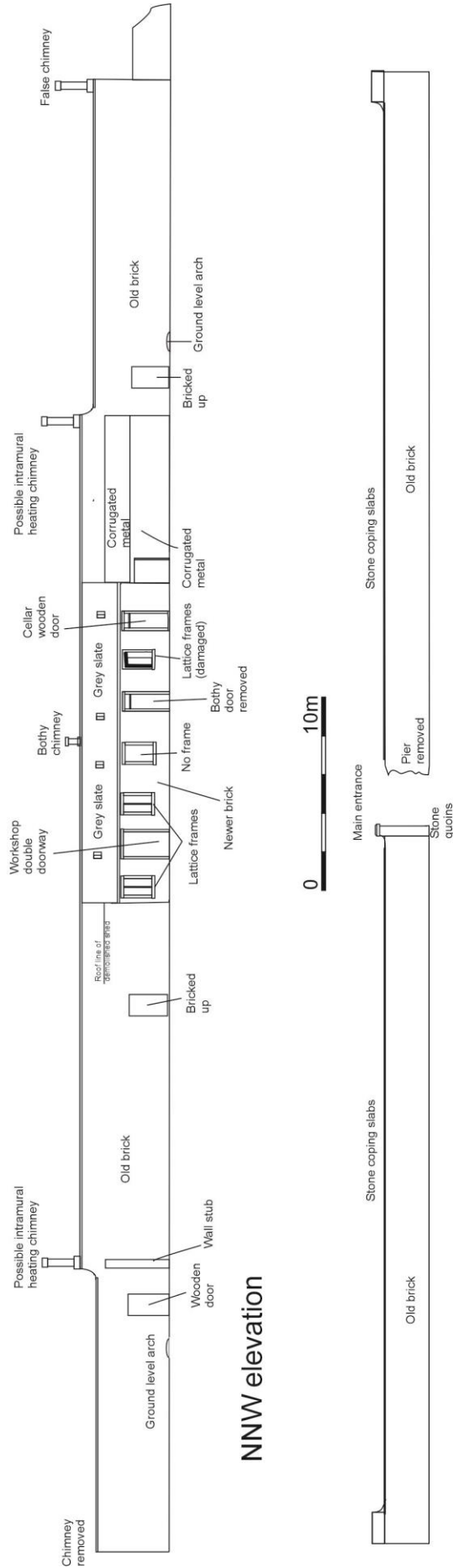


SZ02

2021 Alder Archaeology Ltd

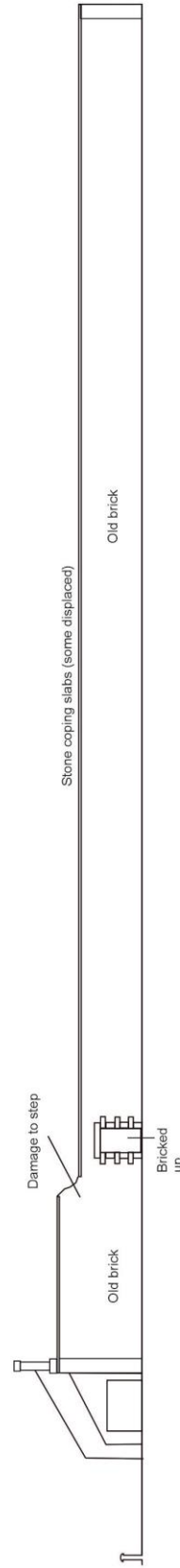
Ury walled garden, NNW and SSE external elevations, including bothy

Illus 3



NNW elevation

SSE elevation

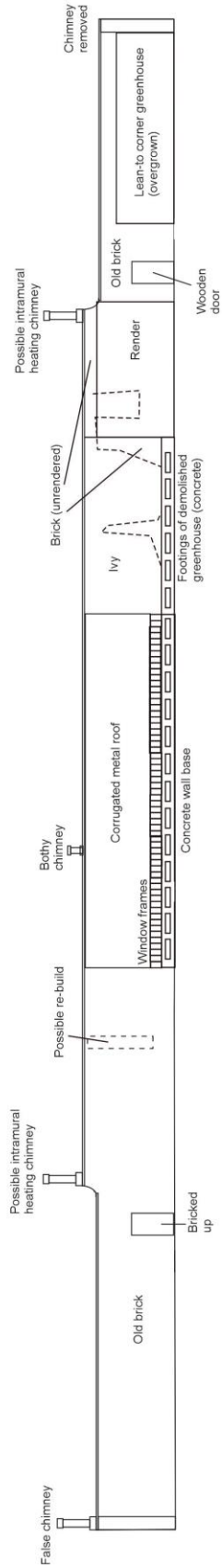


WSW elevation

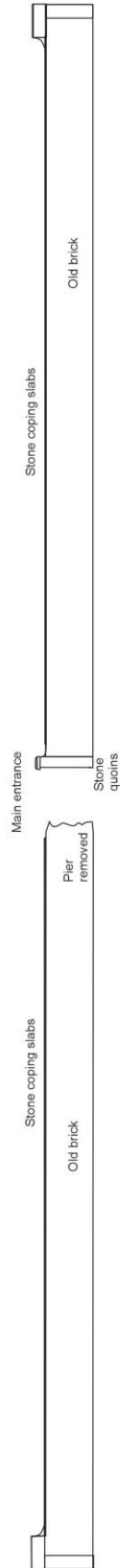
ENE elevation on private land

Illus 4

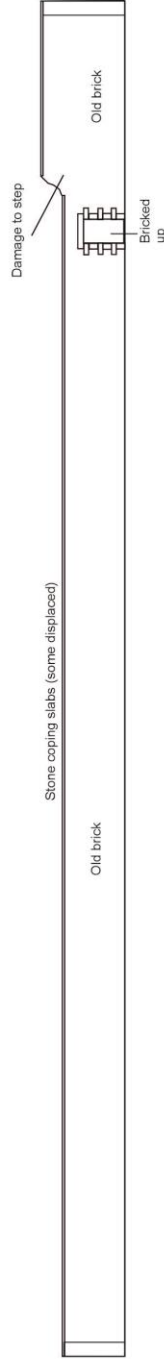
Ury walled garden, internal elevations



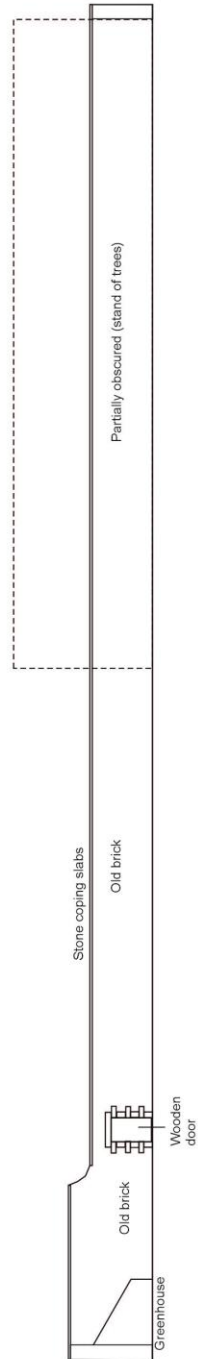
NNW elevation



SSE elevation



WSW elevation



ENE elevation